

# 2021 PROPERTY GUIDE

## DEALS

[OA.MO.GOV/GENERAL-SERVICES/SURPLUS-PROPERTY](http://OA.MO.GOV/GENERAL-SERVICES/SURPLUS-PROPERTY)



**MOWER**  
Scag MFG, S/N 0600380  
48" deck  
\$750



**LIQUID SANITIZER**  
\$7.50 (per gallon)

**MULTI-PURPOSE  
CLEANER**  
\$10  
(6 32 fl oz  
bottles per box)



**HAND SOAP**  
\$0.75 (4 Fl oz)



**ASSORT. KNIVES**  
\$1-3



**DRYER**  
110 V  
\$75



**DESKS**  
\$125 (various sizes  
& types)



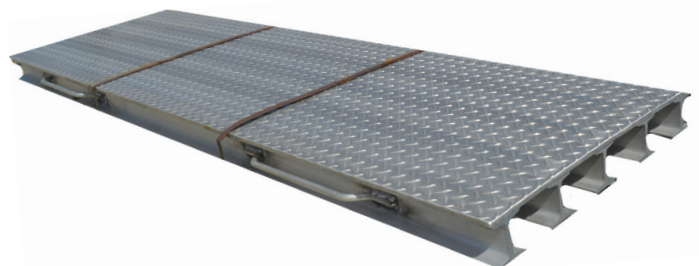
**ASSORT. SOCKETS**  
\$2-5 (per piece)



**BOXES**  
16" x 13" x 10"  
\$10 (per bundle of 25)



**HAMMER**  
\$5



**ALUMINUM PLATFORMS**  
4" I-beam width, multiple uses  
10' x 2' \$100, 6' x 2' \$75, 3' x 2' \$50



**NETWORK SWITCH**  
\$10



**COOKING POT**  
\$3 (with lid)

# PROPERTY

OA.MO.GOV/GENERAL-SERVICES/SURPLUS-PROPERTY

## TRANSPORT VEHICLE

GM MFG, 2011 model,  
Handicap accessible with  
chairlift, needs repair  
**\$7,500**



## EHR WORKSTATION

Enovate MFG, electronic  
health record device,  
includes medical dispenser  
drawers  
**\$350**



**FIREFIGHTER CHAINSAW**  
Cutting Edge MFG  
**\$150**



**FORK LIFT**  
International MFG,  
S/N 56527  
**\$12,500**



**TRUCK**  
GM MFG, S/N 1GCG33R8WF061099,  
1998 model, 98,000 miles  
**\$2,500**



**TRUCK**  
Stewart Stevenson MFG, S/N  
A-T009993EDGC  
**\$3,500**



**BRUSH HOG**  
Woods MFG, 15' wide  
**\$3,000**



**ROW OF SEATS**  
**\$75**



**ROLLING HOSPITAL BED**  
**\$225**



**PRINTER**  
Epson MFG, LQ 590, 24 pin  
technology, form printing  
**\$20**



**PACK**  
**\$10**



**WATER VALVE**  
**\$40**



**TIRES**  
18 x 8.5, 4 PLY  
**\$30 (each)**



**TOOL  
STORAGE**  
**\$100**



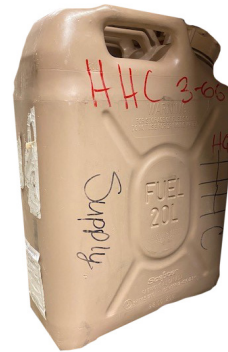
**CHAIRS**  
**\$25**  
(multiple varieties)



**PLASTIC  
CONTAINER**  
Portable tool storage  
**\$50**



**HYDRAULIC  
FILTER**  
**\$2**



**FUEL  
CONTAINER**  
20 L  
**\$5**



**CAGE**  
Three deck animal cage  
**\$250**

**VISIT OUR  
WAREHOUSE**  
We have much more  
property to choose from  
at our Jefferson City  
location. We can't wait to  
see you!

**SNOWBLOWER**  
Toro, includes small removable  
soft cab, handheld  
**\$500**



# VEHICLES

OA.MO.GOV/GENERAL-SERVICES/SURPLUS-PROPERTY



## 2017 CHEVROLET EQUINOX LS SPORT

AWD, 4D, 93,506 Miles, Silver, Gas, 2GNFLEEK9H6323627  
2.4L 4CYL AC PW PL

**\$13,200**

## 2016 CHEVROLET TAHOE LS SPORT

4WD, 4D, 78,106 Miles, Black, 1GNSKFEC0GR393410  
Gas, 5.3L, 8CYL, AC, PW, PL

**\$26,000**



## 2014 JEEP PATRIOT SPORT SUV

FWD, 4D, 72,229 Miles, Grey, 1C4NJPBA4ED864356, Gas  
2.0L, 4CYL, AC, PW, PL

**\$8,600**

## 2017 JEEP GRAND CHEROKEE SPORT

4WD, 4D, 87,419 Miles, Blue, 1C4RFAG3HC817623, Gas  
3.6L, 6CYL, AC, PW, PL

**\$20,000**



**Call Stephanie for details or to place a hold on a vehicle  
at 573.522.4874.**

## WE SHIP

If you are unable to pick up your property or take it with you, we will gladly ship property that fits within our shipping guidelines. To have an item shipped to you, contact the storekeepers for shipping rates.

**573.751.3415**



## DIRECT TRANSFERS

Property obtained from GSA Xcess does not have to come to our warehouse. You have the option to have the property directly transferred, which means, it will be brought right to you. This makes it easier and quicker to get your property where and when it is needed. Shipping costs and delivery are the responsibility of the donee.

**573.751.3415**



