

# State of Missouri

OFFICE OF ADMINISTRATION

DIVISION OF FACILITIES MANAGEMENT DESIGN & CONSTRUCTION

## AVAILABLE STATE OF MISSOURI FACILITY

### LARGE OFFICE OR COMMERCIAL FACILITY 151,500 SQUARE FEET

4411 North Newstead Ave., St. Louis, Missouri



#### PROPERTY OVERVIEW

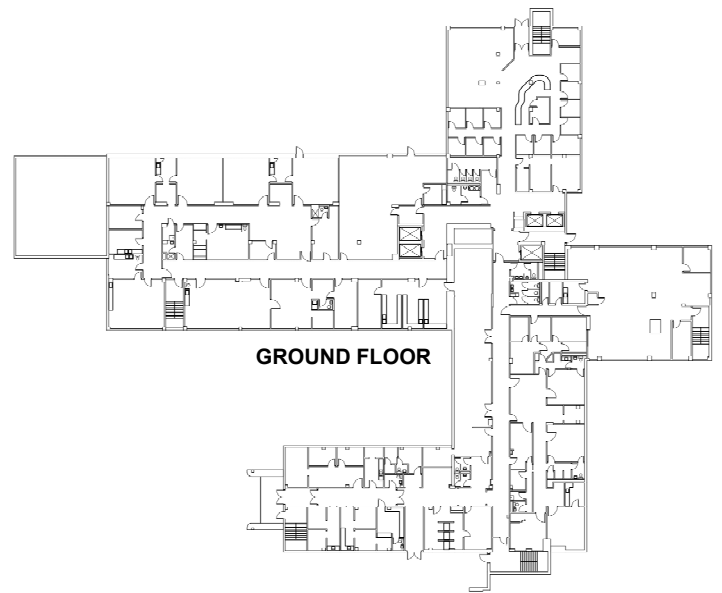
This multi-story property is located at 4411 North Newstead, St. Louis, Missouri. It served as a former office building and housed a number of community resources.

Highlights include a large open lobby and reception area, large open office spaces suitable for many uses, cafeteria, and loading dock. Former clinical functions provide an abundance of plumbing access throughout the building.

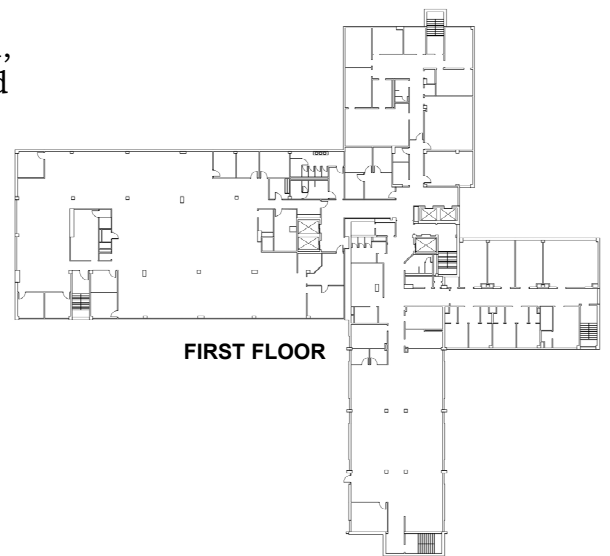
Total building square footage: 151,500

Initial Construction: 1965

Addition constructed in 1994



GROUND FLOOR



FIRST FLOOR

#### INTERESTED IN THIS PROPERTY OR OTHER AVAILABLE LOCATIONS?

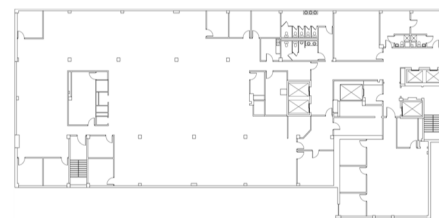
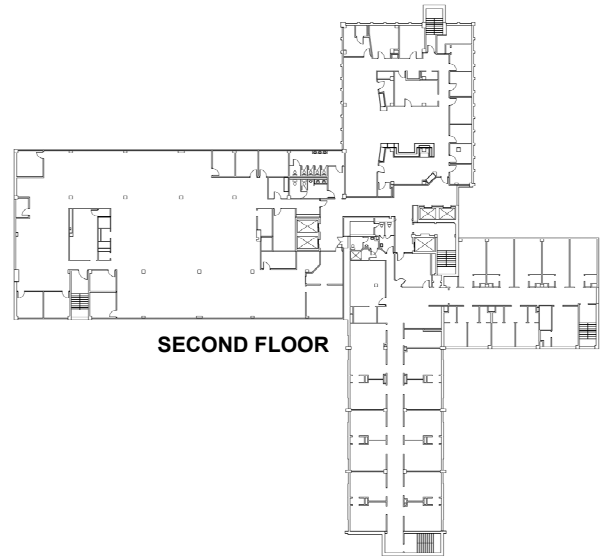
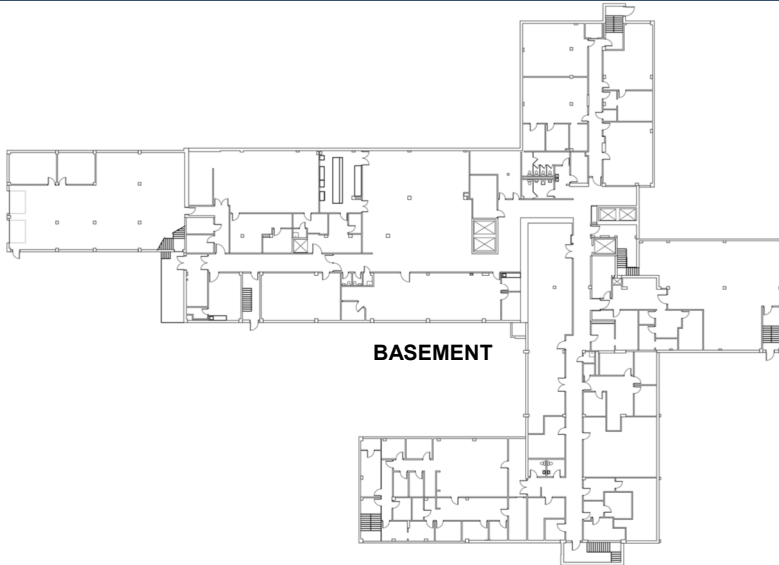
Please contact Brenda Verslues at the following email address: [Brenda.Verslues@oa.mo.gov](mailto:Brenda.Verslues@oa.mo.gov)

Or visit our website: <https://oa.mo.gov/facilities/bid-opportunities/future-requests-rfq-lease-state-owned-property>

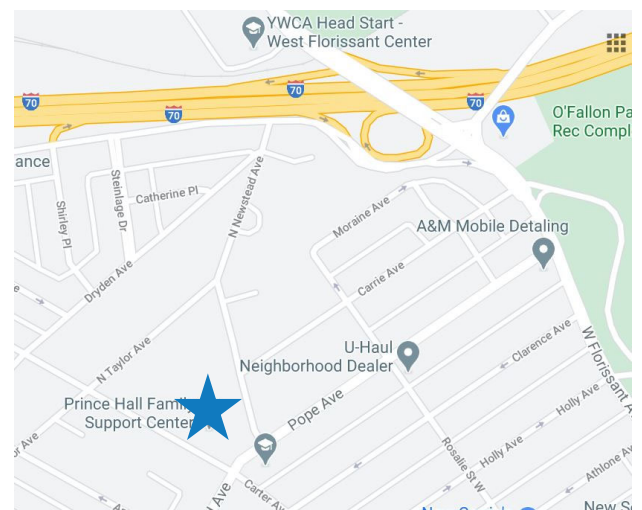
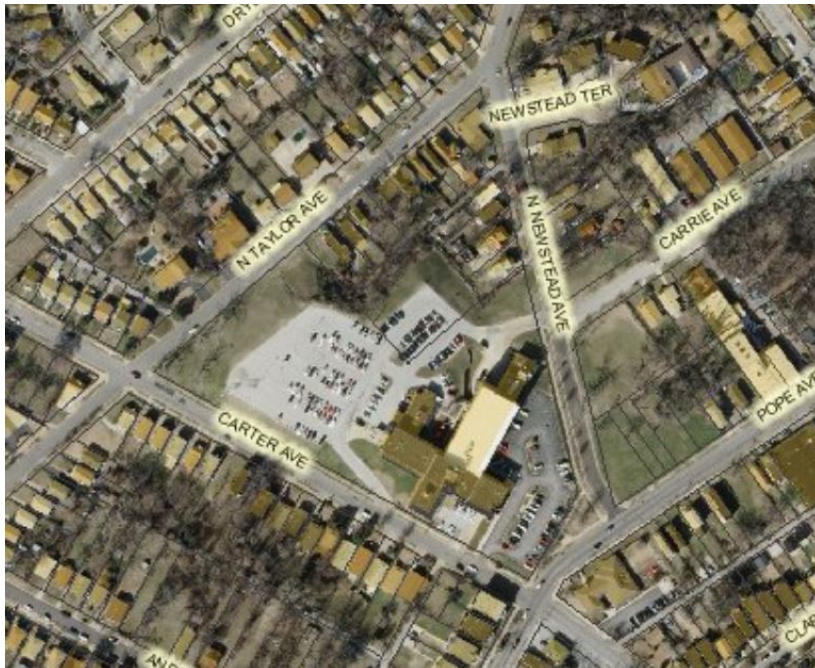
# LARGE OFFICE OR COMMERCIAL FACILITY 151,500 SQUARE FEET

4411 North Newstead, St. Louis, Missouri

## ADDITIONAL FLOOR PLANS



## LOCATION MAPS



## INTERESTED IN THIS PROPERTY OR OTHER AVAILABLE LOCATIONS?

Please contact Brenda Verslues at the following email address: [Brenda.Verslues@oa.mo.gov](mailto:Brenda.Verslues@oa.mo.gov)

Or visit our website: <https://oa.mo.gov/facilities/bid-opportunities/future-requests-rfq-lease-state-owned-property>