

THE RECYCLING *Journey*

DISCOVER HOW A
GLASS BOTTLE
GETS A NEW LIFE



1 Collection



Glass is collected at curbside, beverage container redemption centers, beverage distributor co-ops, drop-off locations and at some special events.

2 Sorting



At a material recovery facility (MRF), rotating metal discs on a conveyor belt break the glass, which then falls through holes while other material remains on the belt. The separated glass is then placed on a vibrating screen and hit with gusts of air to remove dirt, paper, and debris from the broken glass material. Once the recycled glass is crushed, it is called "cullet."

3 Processing

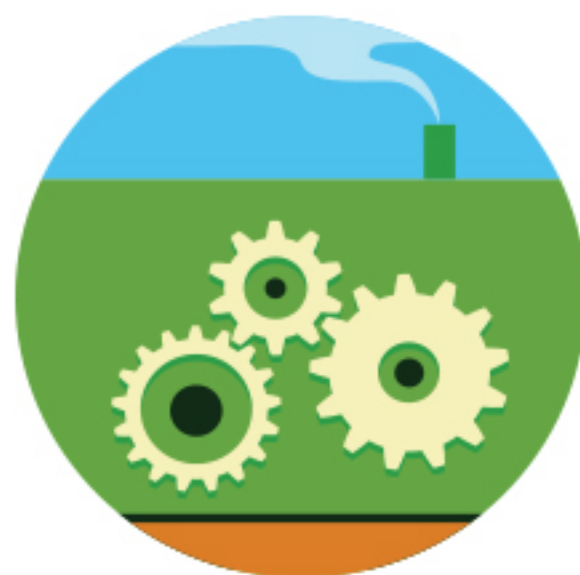
Cleaned cullet is sometimes sorted by color (green, amber, and clear) before being sent to a special cullet processor for further contamination removal and to be sized down to container specifications.



For it to become a new glass container, glass must be free of contaminants, like ceramic dishes, light bulbs, mirror glass, trash and other recyclables.

4 Converting

This mixed glass is then sorted using an "optical sorter" by color. Next, it is sized according to manufacturing standards — usually $\frac{3}{8}$ inch to $\frac{3}{4}$ inch. No other processing is necessary.



5 Manufacturing

The recycled glass is placed into the glass container furnace and re-melted with raw materials to produce a new container.



**I became a
glass countertop!**

**KEEP AMERICA
BEAUTIFUL**

*I want
to be*