

ADDENDUM NO. 3

TO: PLANS AND SPECIFICATIONS FOR STATE OF MISSOURI

**Replace Boilers and Controls
Farmington Correctional Center
Farmington, Missouri
Project No.: C2006-01**

Bid Opening Date: 1:30 PM, Thursday, September 14, 2023 (Not Changed)

Bidders are hereby informed that the construction Plans and/or Specifications are modified as follows:

VOLUME 1

SPECIFICATION CHANGES:

1. Volume 1 - Section 230923, Direct Digital Control (DDC) System For HVAC
 - a. REPLACE Paragraph 2.1 as follows:
 - 2.1 DDC SYSTEM MANUFACTURERS
Manufacturers: Subject to compliance with requirements, provide products by the following:

Schneider Electric USA, Inc. (C&C Group)

Contact information:
Corey Schepers
C&C Group
cschepers@c-cgroup.com
(913)530-7369

DRAWING CHANGES:

1. Volume 1 – Drawing E6.0 – Electrical One Line Diagram and Schedules
 - a. REVISE per attached Revision A, dated 9/6/2023

VOLUME 2

SPECIFICATION CHANGES:

1. Volume 2 - Section 230901, Instrumentation and Controls for HVAC – Power Plant
 - a. REPLACE Paragraph 2.4-A (Page 230901-8) as follows:
 - 2.4-A. New controllers shall interface ~~with the Owner's existing Building Automation System (BAS) and~~ with the new Volume 1 BAS for monitoring/status reporting and archival of data.
 1. Provide new control loop displays on ~~existing and/or~~ new Volume 1 BAS operator interface stations.

2. Coordinate specific requirements with Owner's Representative.
2. Volume 2 - Section 232519.16, Reverse Osmosis Water Treatment Equipment
 - a. REPLACE Paragraph 2.2-O.1 as follows:
 - 2.2-O.1. Provide a communications interface between the new RO control system and ~~the existing power plant building automation system (Automated Logic) and with the~~ new Volume 1 building automation system for monitoring/status reporting and archival of data. Coordinate specific requirements with Owner's Representative.
3. Volume 2 - Section 232519.20, Reverse Osmosis Water Treatment System Controls
 - a. REPLACE Paragraph 2.1-B.2 as follows:
 - 2.1-B.2. Provide communications capability to allow the controller to interface with the ~~Owner's existing Automated Logic Building Automation System (BAS) and with the~~ new Volume 1 control system for monitoring, status reporting, and archival of data. Coordinate specific requirements with Owner's Representative.
4. Volume 2 - Section 232519.40, Reverse Osmosis Water Pumping System
 - a. REPLACE Paragraph 2.7-A as follows:
 - 2.7-A. Provide a communications interface between the new RO pump control system and the ~~existing power plant building automation system (Automated Logic) and with the~~ new Volume 1 control system. Coordinate specific requirements with Owner's Representative.

GENERAL COMMENTS:

1. Please contact Paul Girouard, Contract Specialist, at 573-751-4797 or Paul.Girouard@oa.mo.gov for questions about bidding procedures and MBE/WBE\SDVE goals and submittal requirements.
2. **All bids shall be submitted on the bid forms without additional terms and conditions, modifications, or stipulations. Each space on the bid forms shall be properly filled including a bid amount for the alternate. Failure to do so will result in rejection of the bid.**
3. **MBE/WBE/SDVE participation requirements can be found in DIVISION 00. The MBE/WBE/SDVE participation goals are 10%/10%/3%, respectively. All MBE, WBE, and MBE/WBE contractors, subcontractors, and suppliers must be certified by the State of Missouri, Office of Equal Opportunity. No other certifications from other Missouri certifying agencies will be accepted. If a bidder is unable to meet a participation goal, a Good Faith Effort Determination Form must be completed. Failure to complete this process will result in rejection of the bid.**
4. The new deadline for technical questions was September 6, 2023 at noon (12:00 PM).
5. Changes to, or clarification of, the bid documents are only made as issued in the addenda.
6. All correspondence with respect to this project must include the State of Missouri project number as indicated above.
7. Current Planholders list available online at: <https://www.oafmdcplanroom.com/jobs/2077/planholders/c2006-01-replace-boilers-controls-farmington-correctional-center>

8. Prospective Bidders contact American Document Solutions, 1400 Forum Blvd., Suite 7A, Columbia MO 65203, 573-446-7768 to order official plans and specifications.

ATTACHMENTS:

1. Revised Volume 1 Drawing E6.0

September 7, 2023

END OF ADDENDUM NO. 3



PHIL WENTZ
MO Engineering Registration No. P-29111

MEP:
McCLURE ENGINEERING
1000 Clark Avenue
Saint Louis, Missouri 63102
T 314-645-6232
MEP Engineers
McClure Engineering
Professional Engineering
Corporation
Missouri State Certificate of
Authority #000087

GENERAL ONE-LINE NOTES:

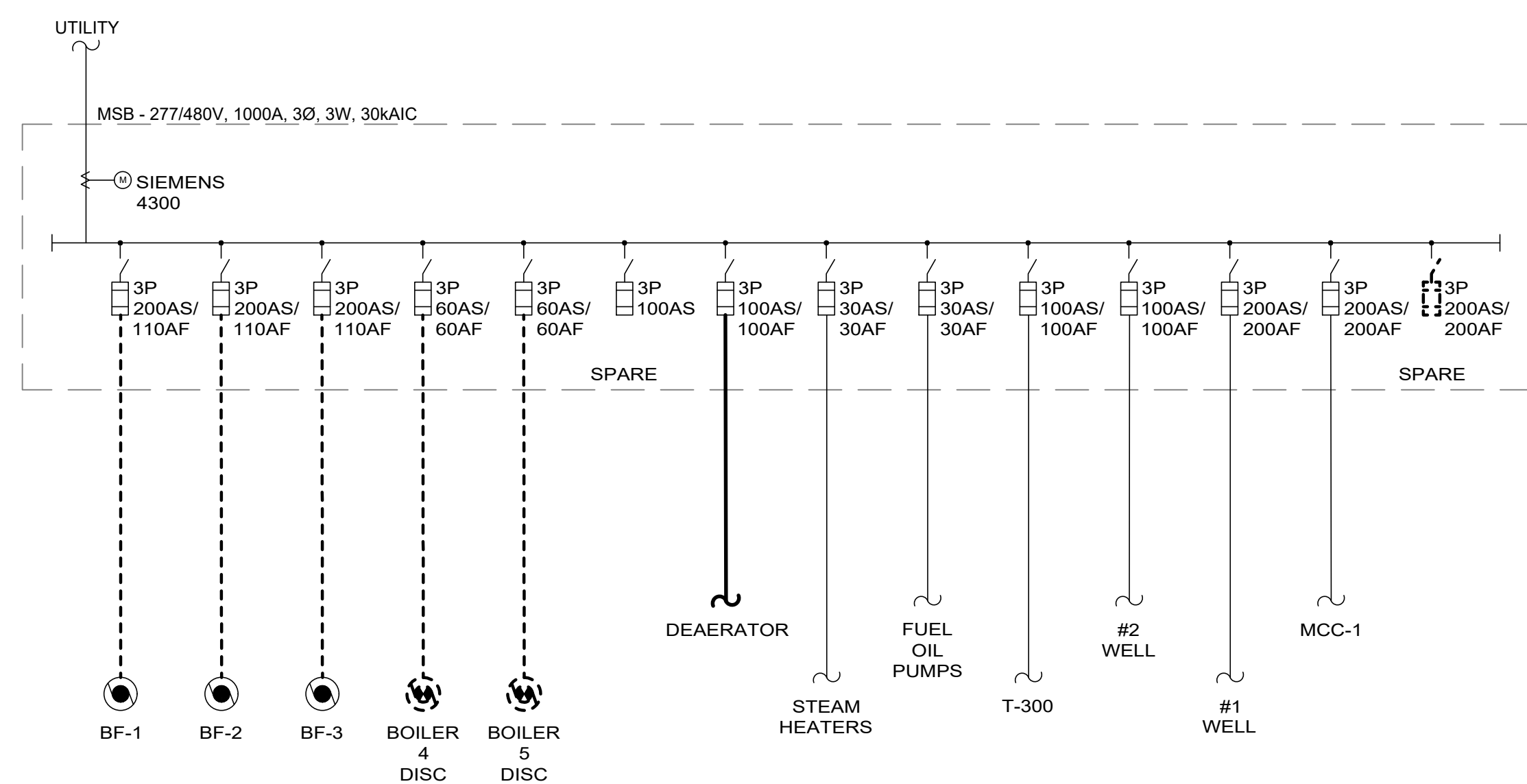
1. ALL EQUIPMENT SHOWN AS THIN CONTINUOUS LIGHT LINE IS EXISTING EQUIPMENT TO REMAIN.
2. ALL EQUIPMENT SHOWN AS THICK DASHED HEAVY LINE IS EXISTING EQUIPMENT TO BE REMOVED.
3. ALL EQUIPMENT SHOWN AS THICK CONTINUOUS HEAVY LINE IS NEW EQUIPMENT.
4. COORDINATE ELECTRICAL SHUT-DOWNS WITH OWNER AND AMEREN.

GENERAL NOTES:

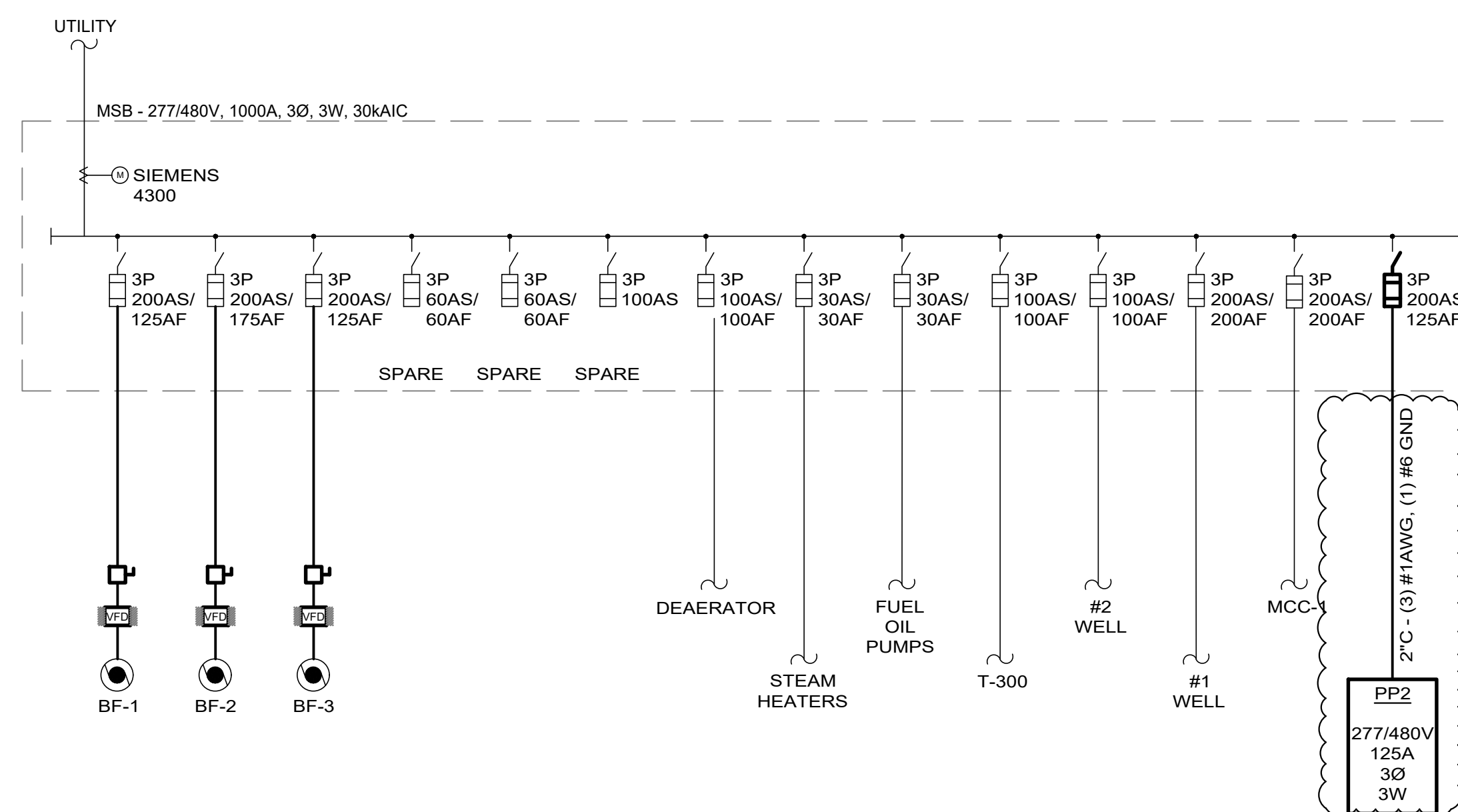
1. THIS FACILITY IS ON A 480V, GROUNDED B SYSTEM.

ONE-LINE KEYED NOTES:

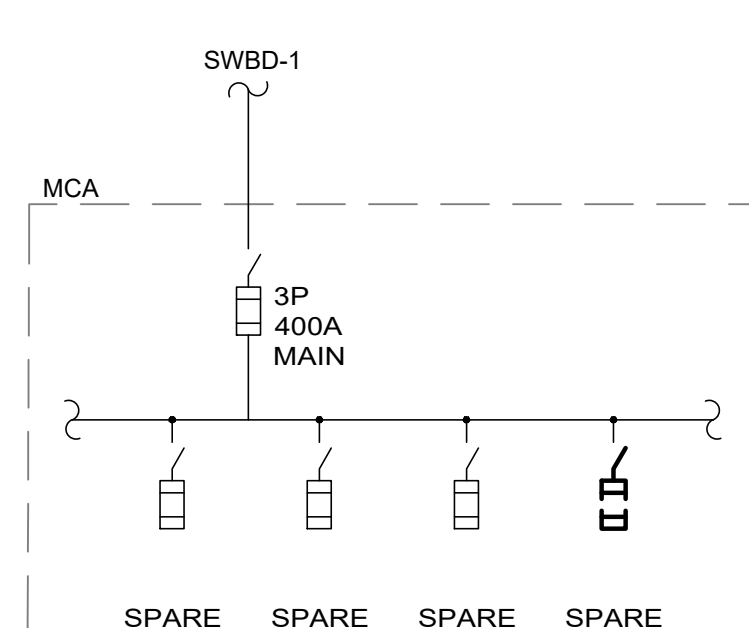
- 1 RE-FEED 100A CONNECTION TO SALLY PORT FROM SPARE SWITCH LOCATED IN MSB. SEE PLANS SHEET E3.2 FOR MORE INFORMATION.
- 2 FURNISH AND INSTALL NEW FUSE SWITCH IN EXISTING MCA TO FEED NEW BOOSTER PUMP SKID. SEE PLANS SHEET E3.0 FOR MORE INFORMATION.



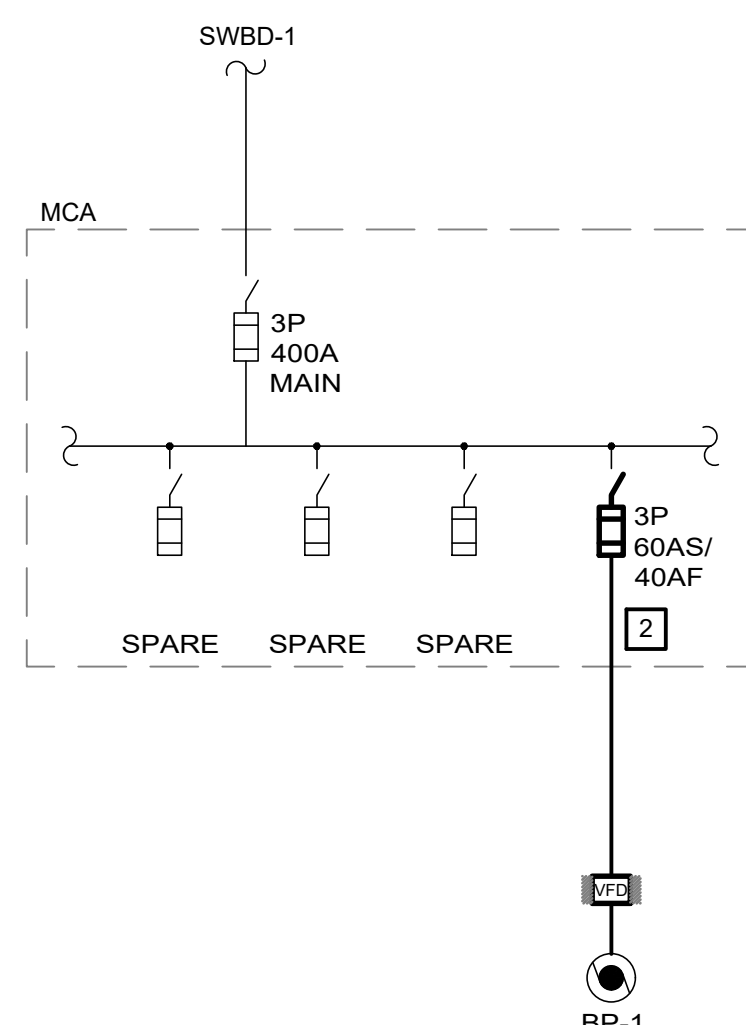
DEMOLITION WORK - ONE-LINE DIAGRAM - MSB
NTS



NEW WORK - ONE-LINE DIAGRAM - MSB
NTS



DEMOLITION WORK PARTIAL ONE-LINE DIAGRAM - MCA
NTS



NEW WORK PARTIAL ONE-LINE DIAGRAM - MCA
NTS

PANELBOARD: PP2 VOLTAGE: 480 V DELTA PHASE: 3P 3W MAIN: 125 A MLO SHORT CIRCUIT: 14 K AIC LOCATION: BOILER PLANT SOUTH											
LOAD	POLES	CKT BKR	CKT	Ph	CKT	CKT BKR	POLES	LOAD			
HWP-1	3	40	1	A	2	40	3	HWP-2	3	B	4
			5	C	6						
			7	A	8						
CRU-1	3	20	9	B	10	20	3	DWP-2	11	C	12
			13	A	14						
			15	B	16						
DWP-1	3	20	17	C	18	20	3	RCP-1	19	A	20
			21	B	22						
			23	C	24						
SPARE	3	20	25	A	26	20	3	SPARE	27	B	28
			29	C	30						
			31	A	32						
SPARE	1	20	33	B	34	20	1	SPARE			
SPARE	1	20	35	C	36	20	1	SPARE			
SPARE	1	20	37	A	38	20	1	SPARE			
SPARE	1	20	39	B	40	20	1	SPARE			

MECHANICAL-ELECTRICAL INTERFACE																										
EQUIPMENT			MOTOR DATA		BRANCH CIRCUIT DATA		SOURCE DATA			UNIT CONTROLS				EQUIPMENT DISCONNECT					REMARKS							
EQUIP. ID	DESCRIPTION	REF. SHEET	LOCATION	HP / (kW)	VOLTAGE / PHASE	FEEDER SIZE	SOURCE	TYPE ¹ / POLES	OCB SWITCH/FUSE SIZE or CB TRIP	TYPE ⁴	STARTER SIZE	TYPE ³	SWITCH/FUSE or CB TRIP	NEMA RATING	F	I	C	SWITCH SIZE	POLE	OCB SIZE	NEMA RATING	F	I	C	REMARKS	
HWP-1	HOT WATER PUMP	E3.2	BOILER PLANT SOUTH	15HP	480 / 3	(3) #10, (1) #10 GRD - 3/4"	PP2	CB / 3	40	VFD	NA	NA	NA	1	E	E	E	HWP-1	60A	3	40A	1	E	E	E	VFD PROVIDED BY DIVISION 26
HWP-2	HOT WATER PUMP	E3.2	BOILER PLANT SOUTH	15HP	480 / 3	(3) #10, (1) #10 GRD - 3/4"	PP2	CB / 3	40	VFD	NA	NA	NA	1	E	E	E	HWP-2	60A	3	40A	1	E	E	E	VFD PROVIDED BY DIVISION 26
BP-1	DOMESTIC WATER BOOSTER SKID	E3.0	BOILER PLANT NORTH	20HP	480 / 3	(3)#8, (1)#10 GRD - 3/4"	MCA	FS / 3	60/40	VFD	NA	NA	NA	1	M	M	E	BP-1	NA	NA	NA	NA	N	N	N	FACTORY-MOUNTED VFD
DWP-1	DOMESTIC WATER PUMP	E3.2	BOILER PLANT SOUTH	1.5HP	480 / 3	(3)#12, (1)#12 GRD - 3/4"	PP2	CB / 1	20	COMB	0	FS	15A	1	E	E	E	DWP-1	NA	NA	NA	NA	N	N	N	
DWP-2	DOMESTIC WATER PUMP	E3.2	BOILER PLANT SOUTH	1.5HP	480 / 3	(3)#12, (1)#12 GRD - 3/4"	PP2	CB / 1	20	COMB	0	FS	15A	1	E	E	E	DWP-2	NA	NA	NA	NA	N	N	N	
CRU-1	CONDENSATE RECEIVER	E3.2	BOILER PLANT SOUTH	4HP	480 / 3	(3) #12, (1) #12 GRD - 3/4"	PP2	CB / 3	20	PWCP	NA	NA	NA	1	M	M	E	CRU-1	30A	3	20A	1	E	E	E	
BF-1	BOILER FAN	E3.1	BOILER PLANT CENTRAL	75HP	480 / 3	(3)#1, (1)#6 GRD - 2"	MSB	FS / 3	200/125	VFD	NA	NA	NA	1	M	M	E	BF-1	200A	3	125A	1	E	E	E	VFD PROVIDED BY DIVISION 23
BF-2	BOILER FAN	E3.1	BOILER PLANT CENTRAL	100HP	480 / 3	(3)#20, (1)#6 GRD - 2"	MSB	FS / 3	200/175	VFD	NA	NA	NA	1	M	M	E	BF-2	200A	3	175A	1	E	E	E	VFD PROVIDED BY DIVISION 23
BF-3	BOILER FAN	E3.1	BOILER PLANT CENTRAL	75HP	480 / 3	(3)#1, (1)#6 GRD - 2"	MSB	FS / 3	200/125	VFD	NA	NA	NA	1	M	M	E	BF-3	200A	3	125A	1	E	E	E	VFD PROVIDED BY DIVISION 23
RCP-1	DOMESTIC HOT WATER RETURN PUMP	E3.1	BOILER PLANT SOUTH	3HP	480 / 3	(3)#12, (1)#12 GRD - 3/4"	PP2	CB / 3	20A	COMB	0	FS	15A	1	E	E	E	RCP-1	NA	NA	NA	NA	N	N	N	

HP / (kW)¹: HORSEPOWER IS SHOWN UNLESS KILOWATTS (KW) OR MINIMUM CIRCUIT AMPACITY (MCA) IS CALLED OUT

TYPE¹: FS FUSED SWITCH
CB CIRCUIT BREAKER
NA NOT APPLICABLE

TYPE⁴: COMB Combination Magnetic Starter / Disconnect Switch or Circuit Breaker
MAG Magnetic Starter
2S1W 2-speed 1-winding Magnetic Starter
2S2W 2-speed 2-winding Magnetic Starter
MAN Manual Motor Starter
PWCP Pre-wired Control Panel
VFD Variable Frequency Drive
TOK Toggle Switch (horsepower rated)
TST Thermostat
RIB Relay in a Box
NA Not Applicable

F I C⁵: (Furnished, Installed, Connected)
M Mechanical, Plumbing, Fire Protection Contractor, or Factory
E Electrical Contractor
N Not Applicable

REVISION: Δ ADDENDUM #3
DATE: 09/06/2023
REVISION: _____
DATE: _____
REVISION: _____
DATE: _____
ISSUE DATE: 04/26/2023

DRAWN BY: AAC
CHECKED BY: ESW
DESIGNED BY: EMP

SHEET TITLE:
ELECTRICAL ONE-LINE DIAGRAM AND SCHEDULES

SHEET NUMBER:

E6.0

OFFICE OF ADMINISTRATION
DIVISION OF FACILITIES
MANAGEMENT,
DESIGN AND CONSTRUCTION

DEPARTMENT OF
CORRECTIONS

BOILER UPGRADES

FARMINGTON CORRECTIONAL
CENTER
1012 WEST COLUMBIA STREET
FARMINGTON, MO 63640

PROJECT # C2006-01
SITE# 7008
FACILITY# 9327008094