

**ADDENDUM NO. 5**

**TO: PLANS AND SPECIFICATIONS FOR STATE OF MISSOURI**

**Replace Boilers and Controls  
Farmington Correctional Center  
Farmington, MO  
PROJECT NO.: C2006-01**

**Bid Opening Date: 1:30PM Thursday, October 12<sup>th</sup>, 2023 (Changed)**

**Bidders are hereby informed that the construction Plans and/or Specifications are modified as follows:**

**VOLUME 1**

**SPECIFICATION CHANGES:**

None

**DRAWING CHANGES:**

1. Volume 1 – Drawing E3.2 – Main Level South Electrical New Work
  - a. Revise per attached Revision A, dated 10/2/2023
2. Volume 1 – Drawing E6.0 – Electrical One Line Diagram and Schedules
  - a. Revise per attached Revision A, dated 10/2/2023

**VOLUME 2**

**SPECIFICATION CHANGES:**

None

**DRAWING CHANGES:**

None

## **GENERAL COMMENTS:**

1. The Pre-Bid Meeting was held Thursday, August 10<sup>th</sup>, 2023 at 10:30 AM followed by a walk-through of the facility.
2. Please contact Paul Girouard, Contract Specialist, at 573-751-4797 or [Paul.Girouard@oa.mo.gov](mailto:Paul.Girouard@oa.mo.gov) for questions about bidding procedures and MBE/WBE/SDVE goals and submittal requirements.
3. **All bids shall be submitted on the bid forms without additional terms and conditions, modifications, or stipulations. Each space on the bid forms shall be properly filled including a bid amount for the alternate. Failure to do so will result in rejection of the bid.**
4. **MBE/WBE/SDVE participation requirements can be found in DIVISION 00. The MBE/WBE/SDVE participation goals are 10%/10%/3%, respectively. All MBE, WBE, and MBE/WBE contractors, subcontractors, and suppliers must be certified by the State of Missouri, Office of Equal Opportunity. No other certifications from other Missouri certifying agencies will be accepted. If a bidder is unable to meet a participation goal, a Good Faith Effort Determination Form must be completed. Failure to complete this process will result in rejection of the bid.**
5. The deadline for technical questions is October 4<sup>th</sup>, 2023 at noon.
6. Changes to, or clarification of, the bid documents are only made as issued in the addenda.
7. All correspondence with respect to this project must include the State of Missouri project number as indicated above.
8. Current Planholders list available online at: <https://www.oafmdcplanroom.com/jobs/2077/planholders/c2006-01-replace-boilers-controls-farmington-correctional-center>
9. Prospective Bidders contact American Document Solutions, 1400 Forum Blvd., Suite 7A, Columbia MO 65203, 573-446-7768 to order official plans and specifications.

## **Attachments:**

1. Volume 1 Drawing E3.2
2. Volume 1 Drawing E6.0

**END ADDENDUM NO. 5**



PHIL WENTZ  
MO Engineering Registration No. P-29111

MEP:  
**McCLURE ENGINEERING**  
1000 Clark Avenue  
Saint Louis, Missouri 63102  
T 314-645-6232  
MEP Engineers  
McClure Engineering  
Professional Engineering  
Corporation  
Missouri State Certificate of  
Authority #000087

OFFICE OF ADMINISTRATION  
DIVISION OF FACILITIES  
MANAGEMENT,  
DESIGN AND CONSTRUCTION

DEPARTMENT OF  
CORRECTIONS

BOILER UPGRADES

FARMINGTON CORRECTIONAL  
CENTER  
1012 WEST COLUMBIA STREET  
FARMINGTON, MO 63640

PROJECT # C2006-01  
SITE# 7008  
FACILITY# 9327008094

REVISION:  $\Delta$  ADDENDUM #5  
DATE: 10/02/2023  
REVISION: \_\_\_\_\_  
DATE: \_\_\_\_\_  
REVISION: \_\_\_\_\_  
DATE: \_\_\_\_\_  
ISSUE DATE: 04/26/2023

DRAWN BY: AAC  
CHECKED BY: ESW  
DESIGNED BY: EMP

SHEET TITLE:  
**MAIN LEVEL  
SOUTH ELECTRICAL  
NEW WORK**

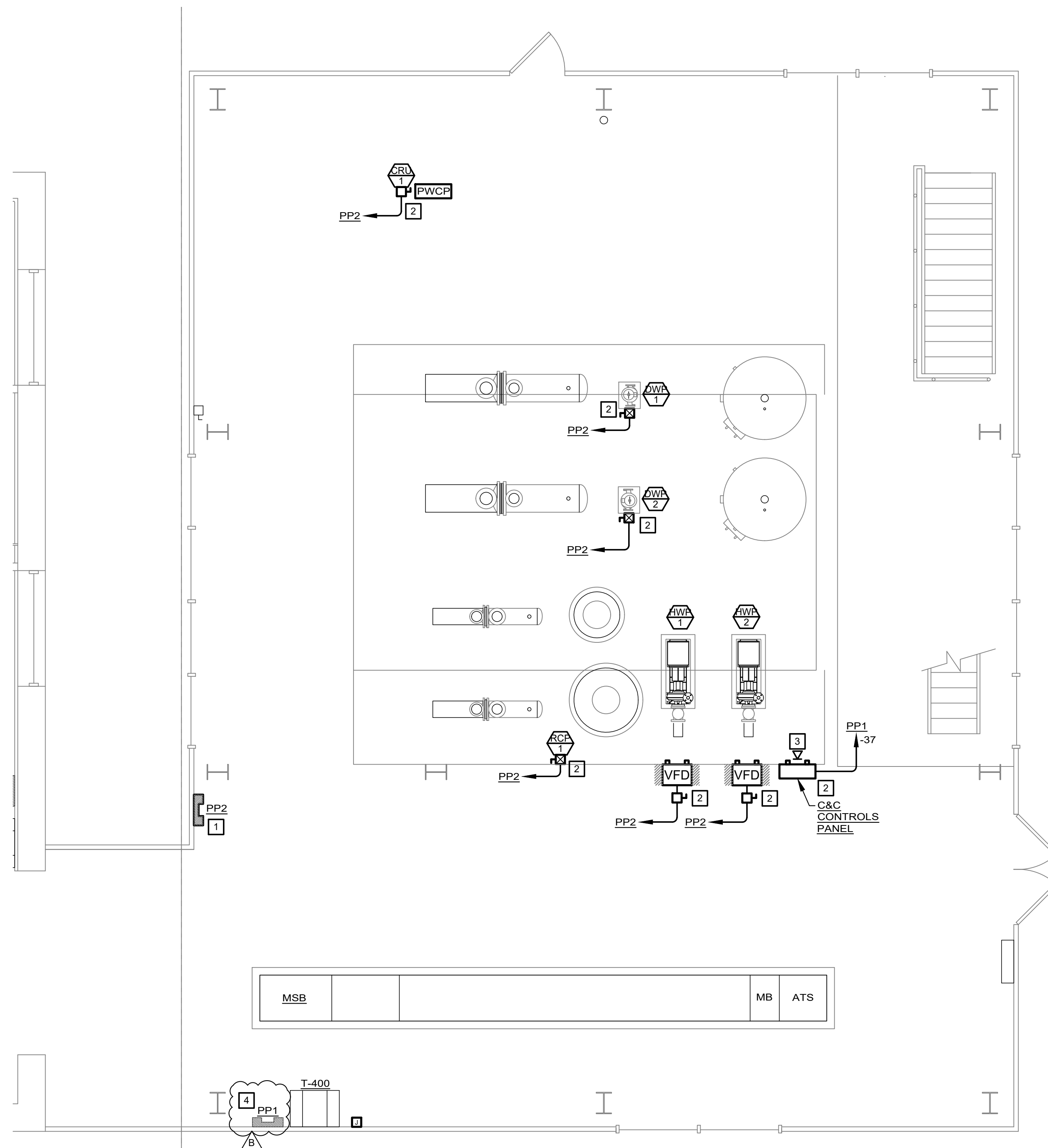
SHEET NUMBER:

**E3.2**

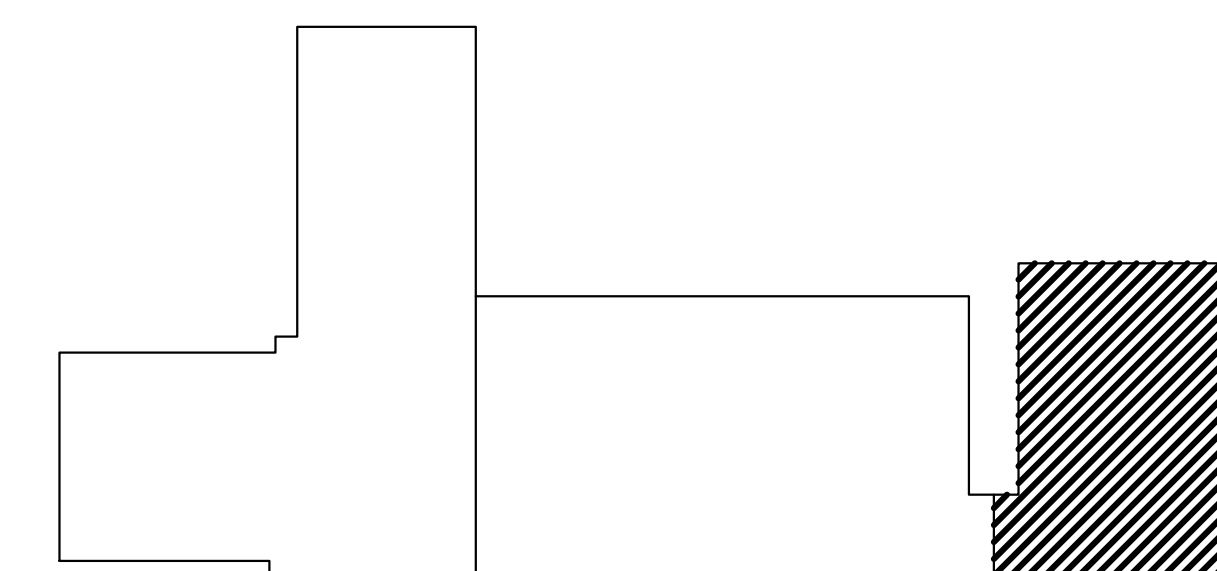
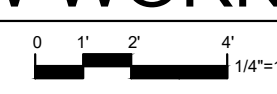
30 OF 31 SHEETS  
04/26/2023

**KEYED NOTES:**

- 1 FURNISH AND INSTALL NEW 277/480V, 125A, 3Ø, 4W PANEL PP2. REFER TO ONE-LINE DIAGRAM ON SHEET E6.0 FOR MORE INFORMATION.
- 2 FURNISH, CONSTRUCT, AND INSTALL UNISTRUT RACK OR MOUNTING EQUIPMENT FOR DISCONNECT AND CONTROLS.
- 3 PROVIDE DATA RECEPTACLE FOR CONNECTION TO NEW CONTROLS PANEL. ROUTE TO DATA RACK LOCATED IN NORTH PLAN. SEE SHEET E3.0 FOR DATA RACK LOCATION.
- 4 INTERCEPT AND REWORK EXISTING 100A CIRCUIT TO SALLY PORT FROM PANEL PP1. COORDINATE WITH UNDERGROUND UTILITY WORK.



N **MAIN LEVEL - SOUTH ELECTRICAL - NEW WORK**  
1/4" = 1'



**KEY PLAN**



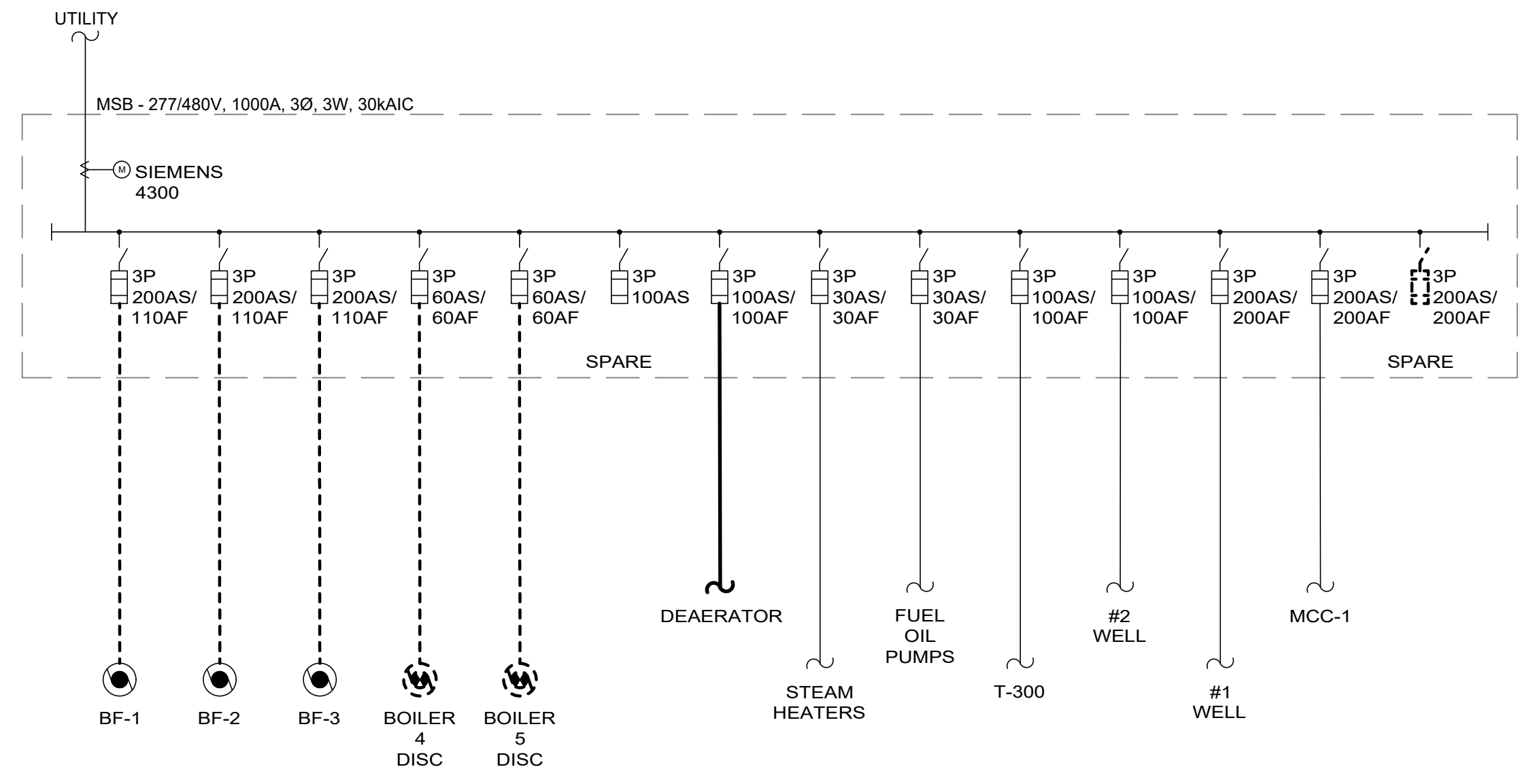
PHILIP J. WENTZ  
MO Engineering Registration No. P-29111

MEP:  
**McCLURE ENGINEERING**  
1000 Clark Avenue  
Saint Louis, Missouri 63102  
T 314-645-6232  
MEP Engineers  
McClure Engineering  
Professional Engineering  
Corporation  
Missouri State Certificate of  
Authority #000087

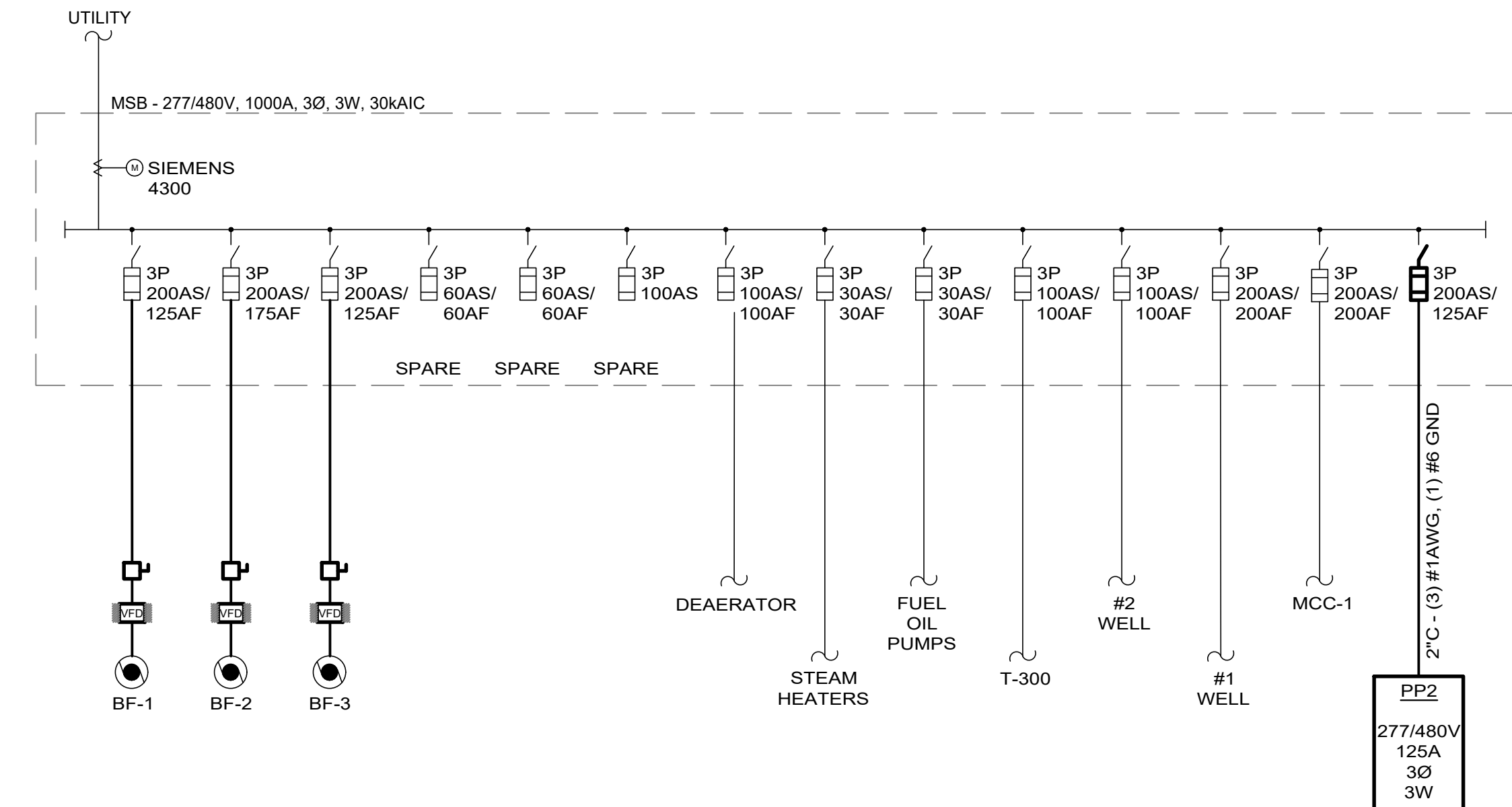
- GENERAL ONE-LINE NOTES:**
- ALL EQUIPMENT SHOWN AS THIN CONTINUOUS LIGHT LINE IS EXISTING EQUIPMENT TO REMAIN.
  - ALL EQUIPMENT SHOWN AS THICK DASHED HEAVY LINE IS EXISTING EQUIPMENT TO BE REMOVED.
  - ALL EQUIPMENT SHOWN AS THICK CONTINUOUS HEAVY LINE IS NEW EQUIPMENT.
  - COORDINATE ELECTRICAL SHUT-DOWNS WITH OWNER AND AMEREN.

- GENERAL NOTES:**
- THIS FACILITY IS ON A 480V, GROUNDED B SYSTEM.

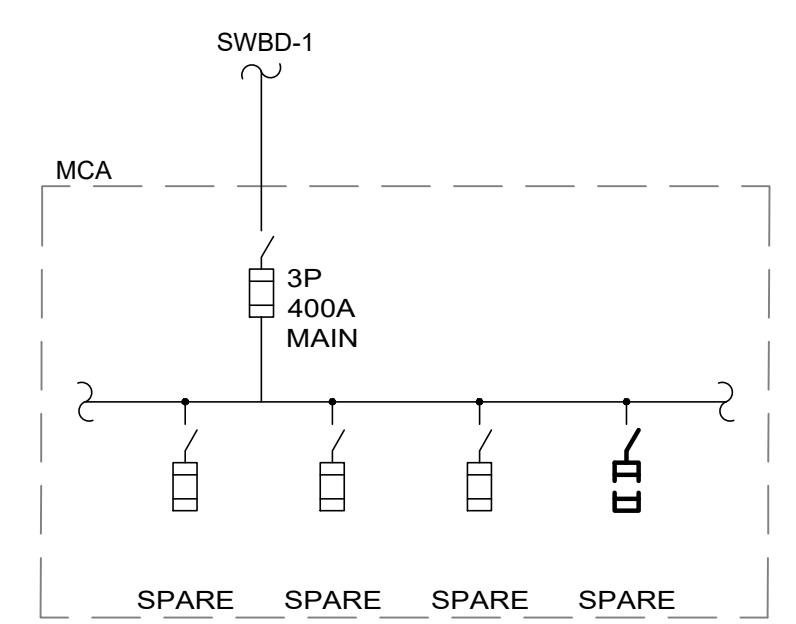
- ONE-LINE KEYED NOTES:**
- 1 NOT USED
  - 2 FURNISH AND INSTALL NEW FUSE SWITCH IN EXISTING MCA TO FEED NEW BOOSTER PUMP SKID. SEE PLANS SHEET E3.0 FOR MORE INFORMATION.



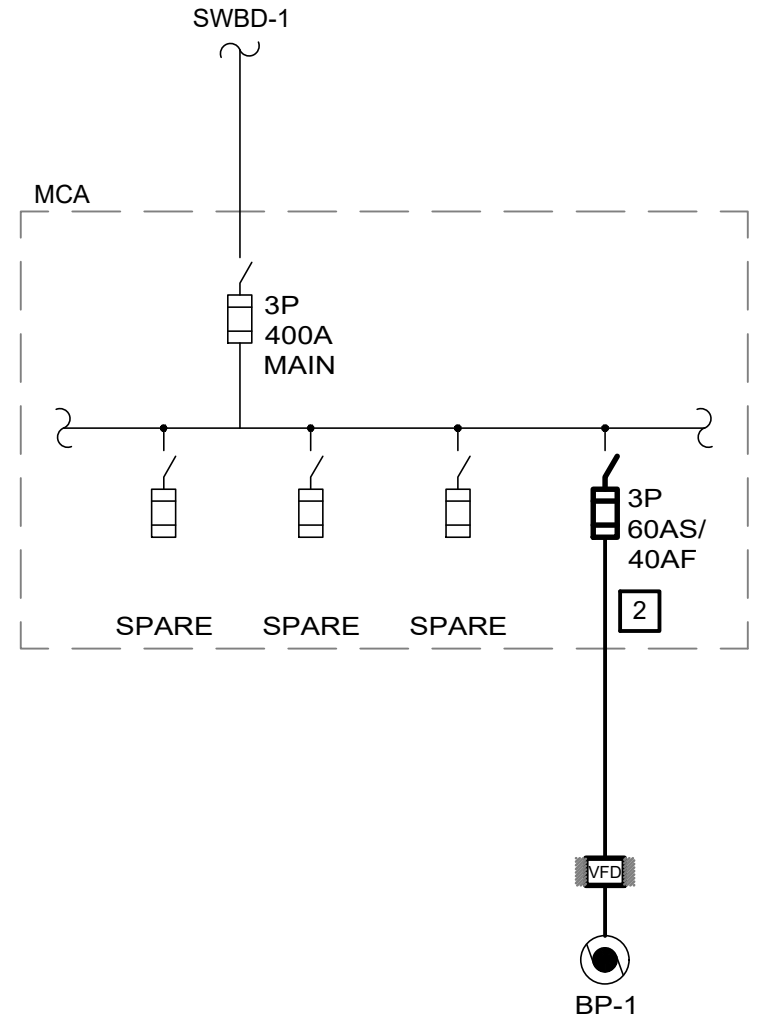
**DEMOLITION WORK - ONE-LINE DIAGRAM - MSB**  
NTS



**NEW WORK - ONE-LINE DIAGRAM - MSB**  
NTS



**DEMOLITION WORK  
PARTIAL ONE-LINE DIAGRAM - MCA**  
NTS



**NEW WORK  
PARTIAL ONE-LINE DIAGRAM - MCA**  
NTS

LOAD	POLES	CKT BKR	CKT	Ph	CKT	CKT BKR	POLES	LOAD
HWP-1	3	40	1	A	2	40	3	HWP-2
			3	B	4			
			5	C	6			
CRU-1	3	20	7	A	8	20	3	DWP-2
			9	B	10			
			11	C	12			
DWP-1	3	20	13	A	14	20	3	RCP-1
			15	B	16			
			17	C	18			
SPARE	3	20	19	A	20	20	3	SPARE
			21	B	22			
			23	C	24			
SPARE	3	20	25	A	26	20	3	SPARE
			27	B	28			
			29	C	30			
SPARE	1	20	31	A	32	20	1	SPARE
SPARE	1	20	33	B	34	20	1	SPARE
SPARE	1	20	35	C	36	20	1	SPARE
SPARE	1	20	37	A	38	20	1	SPARE
SPARE	1	20	39	B	40	20	1	SPARE

EQUIPMENT		MOTOR DATA		BRANCH CIRCUIT DATA		SOURCE DATA		UNIT CONTROLS				EQUIPMENT DISCONNECT				REMARKS								
EQUIP. ID	DESCRIPTION	REF. SHEET	LOCATION	HP / (kW) / (MCA) <sup>1</sup>	VOLTAGE / PHASE	FEEDER SIZE	SOURCE:	TYPE <sup>2</sup> / POLES	OCB SWITCH/FUSE SIZE or CB TRIP	TYPE <sup>4</sup>	STARTER SIZE	TYPE <sup>3</sup> / SWITCH/FUSE or CB TRIP	NEMA RATING	F	I	C	SWITCH SIZE	POLE	OCB SIZE	NEMA RATING	F	I	C	REMARKS
HWP-1	HOT WATER PUMP	E3.2	BOILER PLANT SOUTH	15HP	480 / 3	(3) #10, (1) #10 GRD - 3/4"	PP2	CB / 3	40	VFD	NA	NA	NA	1	E	E	60A	3	40A	1	E	E	E	VFD PROVIDED BY DIVISION 26
HWP-2	HOT WATER PUMP	E3.2	BOILER PLANT SOUTH	15HP	480 / 3	(3) #10, (1) #10 GRD - 3/4"	PP2	CB / 3	40	VFD	NA	NA	NA	1	E	E	60A	3	40A	1	E	E	E	VFD PROVIDED BY DIVISION 26
BP-1	DOMESTIC WATER BOOSTER SKID	E3.0	BOILER PLANT NORTH	20HP	480 / 3	(3)#8, (1)#10 GRD - 3/4"	MCA	FS / 3	80/40	VFD	NA	NA	NA	1	M	M	NA	NA	NA	NA	N	N	N	FACTORY-MOUNTED VFD
DWP-1	DOMESTIC WATER PUMP	E3.2	BOILER PLANT SOUTH	1.5HP	480 / 3	(3)#12, (1)#12 GRD - 3/4"	PP2	CB / 1	20	COMB	0	FS	15A	1	E	E	NA	NA	NA	NA	N	N	N	
DWP-2	DOMESTIC WATER PUMP	E3.2	BOILER PLANT SOUTH	1.5HP	480 / 3	(3)#12, (1)#12 GRD - 3/4"	PP2	CB / 1	20	COMB	0	FS	15A	1	E	E	NA	NA	NA	NA	N	N	N	
CRU-1	CONDENSATE RECEIVER	E3.2	BOILER PLANT SOUTH	4HP	480 / 3	(3) #12, (1) #12 GRD - 3/4"	PP2	CB / 3	20	PWCP	NA	NA	NA	1	M	M	30A	3	20A	1	E	E	E	
BF-1	BOILER FAN	E3.1	BOILER PLANT CENTRAL	75HP	480 / 3	(3)#1, (1)#6 GRD - 2"	MSB	FS / 3	200/125	VFD	NA	NA	NA	1	M	M	200A	3	125A	1	E	E	E	VFD PROVIDED BY DIVISION 23
BF-2	BOILER FAN	E3.1	BOILER PLANT CENTRAL	100HP	480 / 3	(3)#2/0, (1)#6 GRD - 2"	MSB	FS / 3	200/175	VFD	NA	NA	NA	1	M	M	200A	3	175A	1	E	E	E	VFD PROVIDED BY DIVISION 23
BF-3	BOILER FAN	E3.1	BOILER PLANT CENTRAL	75HP	480 / 3	(3)#1, (1)#6 GRD - 2"	MSB	FS / 3	200/125	VFD	NA	NA	NA	1	M	M	200A	3	125A	1	E	E	E	VFD PROVIDED BY DIVISION 23
RCP-1	DOMESTIC HOT WATER RETURN PUMP	E3.1	BOILER PLANT SOUTH	3HP	480 / 3	(3)#12, (1)#12 GRD - 3/4"	PP2	CB / 3	20A	COMB	0	FS	15A	1	E	E	NA	NA	NA	NA	N	N	N	

HP / (kW)<sup>1</sup>: HORSEPOWER IS SHOWN UNLESS KILOWATTS (KW) OR MINIMUM CIRCUIT AMPACITY (MCA) IS CALLED OUT

TYPE<sup>2</sup>: FS FUSED SWITCH  
CB CIRCUIT BREAKER  
NA NOT APPLICABLE

TYPE<sup>4</sup>:  
COMB Combination Magnetic Starter / Disconnect Switch or Circuit Breaker  
MAG Magnetic Starter  
2S1W 2-speed 1-winding Magnetic Starter  
2S2W 2-speed 2-winding Magnetic Starter  
MAN Manual Motor Starter  
PWCP Pre-wired Control Panel  
VFD Variable Frequency Drive  
TOK Toggle Switch (horsepower rated)  
TST Thermostat  
RIB Relay in a Box  
NA Not Applicable

F I C<sup>5</sup>: (Furnished, Installed, Connected)  
M Mechanical, Plumbing, Fire Protection Contractor, or Factory  
E Electrical Contractor  
N Not Applicable

OFFICE OF ADMINISTRATION  
DIVISION OF FACILITIES  
MANAGEMENT,  
DESIGN AND CONSTRUCTION

DEPARTMENT OF  
CORRECTIONS

BOILER UPGRADES

FARMINGTON CORRECTIONAL  
CENTER  
1012 WEST COLUMBIA STREET  
FARMINGTON, MO 63640

PROJECT # C2006-01  
SITE# 7008  
FACILITY# 9327008094

REVISION:  $\Delta$  ADDENDUM #3  
DATE: 09/06/2023  
REVISION:  $\Delta$  ADDENDUM #5  
DATE: 10/02/2023  
REVISION: \_\_\_\_\_  
DATE: \_\_\_\_\_  
ISSUE DATE: 04/26/2023

DRAWN BY: AAC  
CHECKED BY: ESW  
DESIGNED BY: EMP

SHEET TITLE:  
**ELECTRICAL  
ONE-LINE DIAGRAM  
AND SCHEDULES**

SHEET NUMBER:

**E6.0**

31 OF 31 SHEETS  
04/26/2023

S:\075108.000 FARMINGTON CORRECTIONAL CENTER BOILERS\03 ELECTRICAL\E6.0.dwg 2023-10-2 14:51 Acheatham