

ADDENDUM NO. 2

TO: PLANS AND SPECIFICATIONS FOR STATE OF MISSOURI

Upgrade Electrical and Restrooms, Grandstands
Missouri State Fairgrounds
Sedalia, Missouri
PROJECT NO. F2304-01

Bid Opening Date is: 1:30 PM, Thursday, March 21st, 2024 (CHANGED)

Bidders are hereby informed that the Construction Plans and/or Specifications are modified as follows:

SPECIFICATION CHANGES:

1. As a change to specification section 011000 – SUMMARY OF WORK, change paragraph 1.3-A-1 to the following:
 - a. Phase 1: Restroom remodel, structural repairs, Grandstand Stage Disconnect Replacement, and the Grandstand lighting replacement.
 - i. GC may choose to start work immediately after award and be substantially complete, ready for occupancy June 30, 2024.
 - Or
 - ii. GC may choose to start and complete all work in Phase 1 after the 2024 Missouri State Fair and be substantially complete, ready for occupancy by December 31, 2024.

The 2024 Missouri State Fair takes place August 8-18. GC may start work on August 26. If the GC accepts this option bathrooms must be available for events taking place between 9/20/2024 – 9/22/2024 and 10/5, 2024 – 10/12/2024

DRAWING CHANGES:

1. D-101
 - a. Please see the attached revised D-101 for revision to keynote #4.
2. E-101
 - a. Please see the attached revised E-101 with the addition of keynote #7
3. E-103
 - a. Please see the attached revised E-103 for a revision to keynote #1.
4. E-501
 - a. Please see the attached revised E-501 with additional information on the primary conduit and conductor tie in point.

GENERAL NOTE

1. All lighting dedicated to illuminating the track shall be existing to remain and not be included in this project.
2. No work shall take place on the racetrack. Any utility crossing of the racetrack shall be required to be bored underneath the racetrack at a minimum of 5'-0" below the lowest surface of the track where the crossing occurs. Any existing utilities underneath the racetrack that are to be abandoned shall be abandoned in place.

ATTACHMENTS:

1. D-101
2. E-101
3. E-103
4. E-501

March 13, 2024

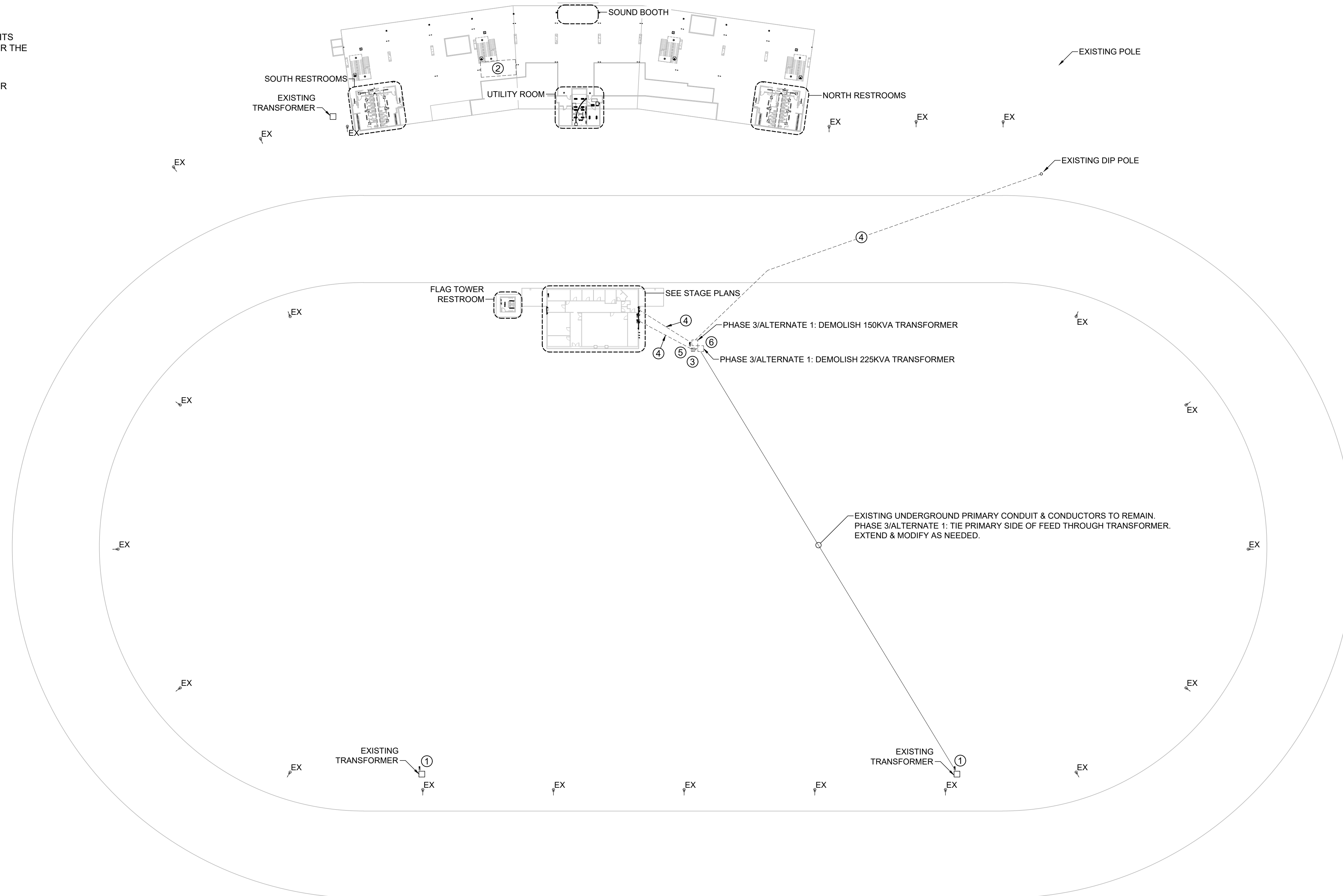
END ADDENDUM NO. 2

DEMOLITION PLAN GENERAL NOTES:

1. SEE SHEETS E-501, E-502, E-601 & E-602 FOR ADDITIONAL ELECTRICAL NOTES, DETAILS, & SCHEDULES.
2. SEE SHEET M-501 FOR ADDITIONAL HVAC NOTES, DETAILS, & SCHEDULES.
3. SEE SHEET P-501 FOR ADDITIONAL PLUMBING NOTES, DETAILS, & SCHEDULES.
4. ALL EQUIPMENT LABELED 'EX' OR 'EXISTING' SHALL BE EXISTING TO REMAIN UNLESS OTHERWISE NOTED.

DEMOLITION PLAN KEY NOTES:

- ① PHASE 2: DEMOLISH PANEL & PREP FOR NEW PANEL INSTALLATION.
- ② PHASE 1: DEMOLISH HANGING PRESS BOX & ALL ASSOCIATED ELECTRICAL & HVAC EQUIPMENT & WIRING.
- ③ PHASE 3/ALTERNATE 1: DEMOLISH DISCONNECT.
- ④ PHASE 3/ALTERNATE 1: DEMOLISH CONDUIT AND CONDUCTORS. CONTRACTOR SHALL NOT DESTROY TRACK. ALL CONDUIT & CONDUCTORS UNDER TRACK SHALL BE ABANDONED IN PLACE.
- ⑤ PHASE 3/ALTERNATE 1: DEMOLISH PANEL & ROUTE EXISTING CIRCUITS THAT ARE TO REMAIN TO NEW PANEL CONNECTION LOCATED UNDER THE STAGE.
- ⑥ PHASE 1: REPLACE EXISTING 600A DISCONNECT WITH NEW DOUBLE THROW 600A DISCONNECT. SEE STAGE POWER RISER (PHASE 1) FOR MORE DETAILS.



SITE DEMOLITION PLAN
 SCALE: 1" = 50 ft



Keaton E. Leisinger, P.E.
PE-2021035875
MO Certificate of Authority # 2018029680



1806 West Broadway Boulevard
Sedalia, MO 65301
660.829.9751

J-SQUARED
ENGINEERING
2400 BLUFF CREEK DR. STE. 101
COLUMBIA, MO 65203
573.234.4492

CROCKETT
ENGINEERING CONSULTANTS
1000 W. Nifong Blvd., Bldg. 1.
Columbia, Missouri 65202
(573) 447-0292
www.crockettengineering.com
Crockett Engineering Consultants, LLC
Missouri Certificate of Authority
#2000151304

OFFICE OF ADMINISTRATION
DIVISION OF FACILITIES
MANAGEMENT DESIGN AND
CONSTRUCTION

UPGRADE ELECTRICAL AND
RESTROOMS, GRANDSTAND
MISSOURI STATE
FAIRGROUNDS
2503 W. 16TH ST.
SEDALIA, MO 65301

PROJECT # T2304-01
SITE # 1501
ASSET # 3511501018

REVISION: ADDENDUM #2
DATE: 03 / 12 / 2024

REVISION: _____
DATE: _____

REVISION: _____
DATE: _____

ISSUE DATE: 11/29/2023
BID DOCUMENTS

CAD DWG FILE: F2304-01-D-FP-14.dwg
DRAWN BY: RXM
CHECKED BY: JAP
DESIGNED BY: KEL

SHEET TITLE:

**SITE DEMOLITION
PLAN**

SHEET NUMBER:

D-101

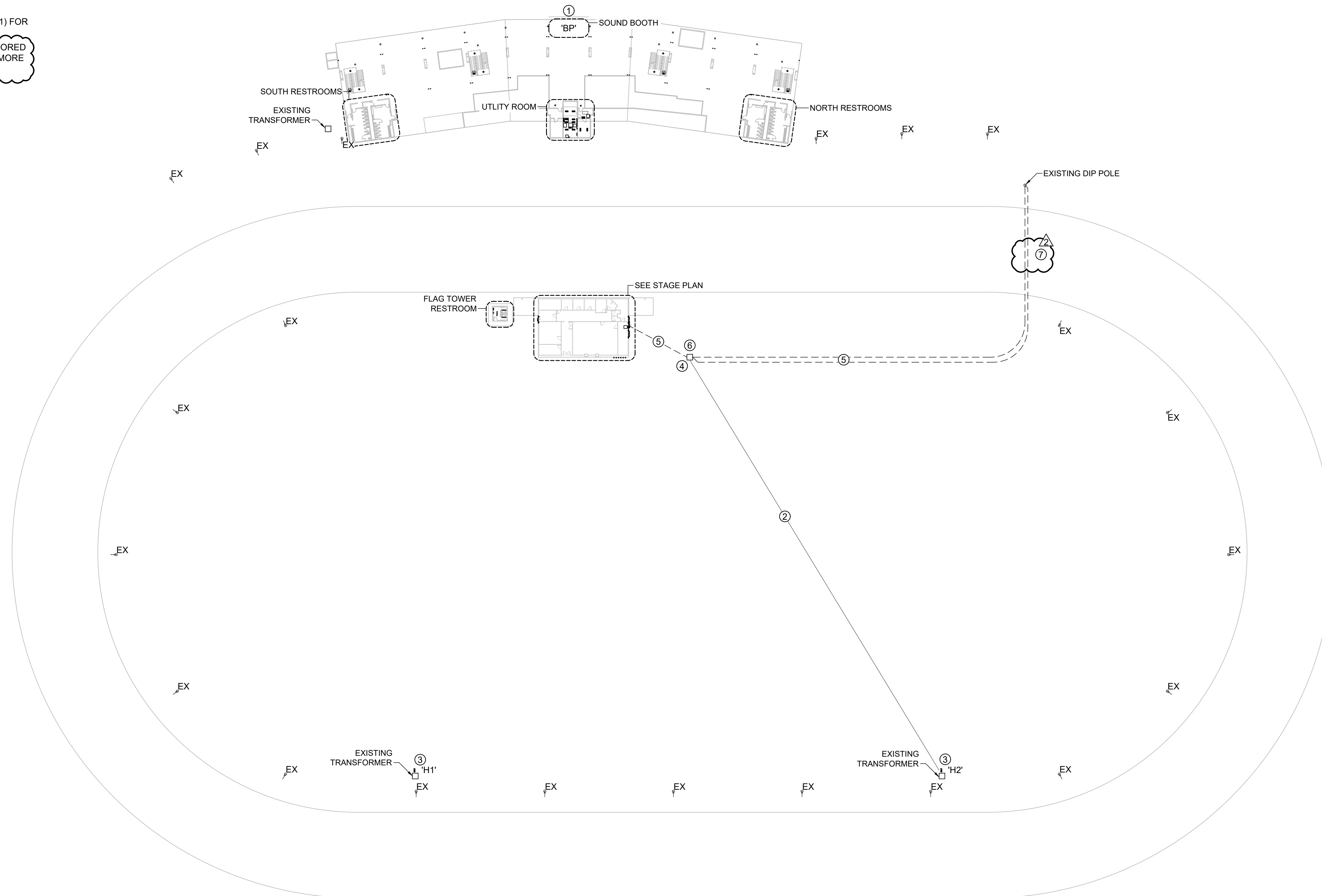
SHEET OF 30

POWER PLAN GENERAL NOTES:

1. SEE SHEETS E-501, E-502, E-601 & E-602 FOR ELECTRICAL NOTES, DETAILS, & SCHEDULES.
2. ALL EQUIPMENT LABELED "EX" OR "EXISTING" SHALL BE EXISTING TO REMAIN UNLESS OTHERWISE NOTED.

POWER PLAN KEY NOTES:

- ① PHASE 1: PROVIDE & INSTALL NEW PANEL. SEE PANEL SCHEDULE & POWER RISER FOR MORE DETAILS.
- ② EXISTING CONDUIT & CONDUCTORS TO REMAIN.
- ③ PHASE 2: PROVIDE & INSTALL NEW PANEL. SEE PANEL SCHEDULE & POWER RISER FOR MORE DETAILS.
- ④ PHASE 3/ALTERNATE 1: PROVIDE & INSTALL NEW 300KVA TRANSFORMER.
- ⑤ PHASE 3/ALTERNATE 1: SEE POWER RISER FOR CONDUIT & CONDUCTOR SIZE AND FURTHER INFORMATION.
- ⑥ PHASE 1: PROVIDE & INSTALL NEW 600A & 800A, 120/208Y, NEMA 3R, DOUBLE THROW DISCONNECTS. SEE STAGE POWER RISER (PHASE 1) FOR MORE INFORMATION.
- ⑦ PHASE 3/ALTERNATE 1: PRIMARY CONDUIT & CONDUCTORS TO BE BORED UNDER TRACK AT MINIMUM OF 5 FT. DEEP. SEE POWER RISER FOR MORE DETAILS.



SITE ELECTRICAL PLAN
 SCALE: 1" = 50 ft



Keaton E. Leisinger, P.E.
PE-2021035875
MO Certificate of Authority # 2018029680



1806 West Broadway Boulevard
Sedalia, MO 65301
660.829.9751

J-SQUARED
ENGINEERING
2400 BLUFF CREEK DR. STE. 101
COLUMBIA, MO 65203
573.234.4492

CROCKETT
ENGINEERING CONSULTANTS
1000 W. Nifong Blvd., Bldg. 1.
Columbia, Missouri 65202
(573) 447-0292
www.crockettengineering.com
Crockett Engineering Consultants, LLC
Missouri Certificate of Authority
#2000151304

OFFICE OF ADMINISTRATION
DIVISION OF FACILITIES
MANAGEMENT DESIGN AND
CONSTRUCTION

UPGRADE ELECTRICAL AND
RESTROOMS, GRANDSTAND
MISSOURI STATE
FAIRGROUNDS
2503 W. 16TH ST.
SEDALIA, MO 65301

PROJECT # T2304-01
SITE # 1501
ASSET # 3511501018

REVISION: ADDENDUM #2
DATE: 03 / 12 / 2024

REVISION: _____
DATE: _____

REVISION: _____
DATE: _____

ISSUE DATE: 11/29/2023
BID DOCUMENTS

CAD DWG FILE: F2304-01-E-FP-20.dwg
DRAWN BY: RXM
CHECKED BY: JAP
DESIGNED BY: KEL

SHEET TITLE:

**SITE ELECTRICAL
PLAN**

SHEET NUMBER:

E-101

SHEET OF 30

POWER PLAN SYMBOL LEGEND

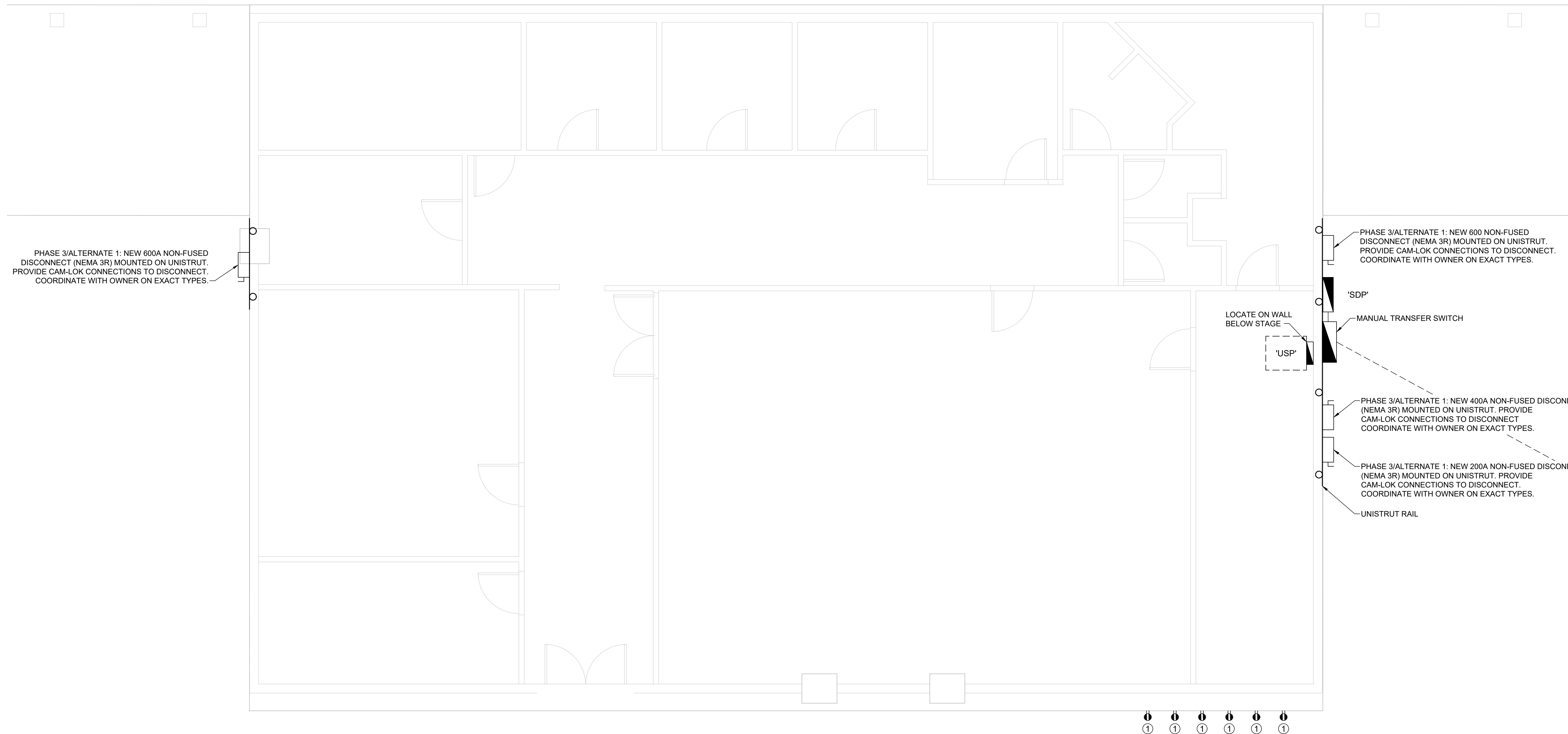
	CIRCUIT WIRING		DATA / PHONE JACK BOX WITH 1" CONDUIT & PULL STRING UP TO CEILING SPACE (STANDARD @ 18" AFF UNLESS NOTED OTHERWISE)
	CIRCUIT TAG		WIRELESS ACCESS POINT, CEILING MOUNTED
	JUNCTION BOX		FLOOR RECEPTACLE
	RECEPTACLE INDICATES MOUNTING HEIGHT TO BOTTOM OF BOX (STANDARD @ 18" AFF UNLESS NOTED OTHERWISE)		FLOOR DATA
	"WP" = WEATHERPROOF OUTDOOR RECEPTACLE		DISCONNECT
	"AW" = ABOVE WINDOW RECEPTACLE		FUSED DISCONNECT
	"AC" = ABOVE CEILING RECEPTACLE		FUSED SWITCH
	"EX" = EXISTING RECEPTACLE TO REMAIN		STARTER / DISCONNECT
	GFCI DUPLEX CONVENIENCE RECEPTACLE		TIE INTO EXISTING
	208V RECEPTACLE		
	QUADPLEX CONVENIENCE RECEPTACLE		
	USB OUTLET WITH USB-A & USB-C CHARGING PORT		

POWER PLAN GENERAL NOTES:

- SEE SHEETS E-501, E-502, E-601 & E-602 FOR ELECTRICAL NOTES, DETAILS, & SCHEDULES.
- ALL EQUIPMENT LABELED "EX" OR "EXISTING" SHALL BE EXISTING TO REMAIN UNLESS OTHERWISE NOTED.

POWER PLAN KEY NOTES:

- PHASE 3/ALTERNATE 1: 50A NEMA 6-50R RECEPTACLE WITH BOX AND COVER MOUNTED TO BACK OF STAGE PLATFORM.



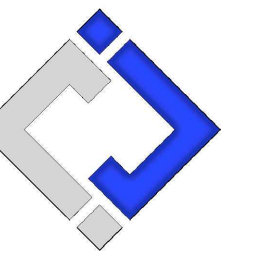
STAGE POWER PLAN
SCALE: 1/4" = 1'-0"



Keaton E. Leisinger, P.E.
PE-2021035875
MO Certificate of Authority # 2018029680



1806 West Broadway Boulevard
Sedalia, MO 65301
660.829.9751



J-SQUARED
ENGINEERING
2400 BLUFF CREEK DR. STE. 101
COLUMBIA, MO 65203
573.234.4492

CROCKETT
ENGINEERING CONSULTANTS
1000 W. Nifong Blvd., Bldg. 1.
Columbia, Missouri 65202
(573) 447-0292
www.crockettengineering.com
Crockett Engineering Consultants, LLC
Missouri Certificate of Authority
#2000151304

OFFICE OF ADMINISTRATION
DIVISION OF FACILITIES
MANAGEMENT DESIGN AND
CONSTRUCTION

UPGRADE ELECTRICAL AND
RESTROOMS, GRANDSTAND
MISSOURI STATE
FAIRGROUNDS
2503 W. 16TH ST.
SEDALIA, MO 65301

PROJECT # T2304-01
SITE # 1501
ASSET # 3511501018

REVISION: ADDENDUM #2
DATE: 03 / 12 / 2024

REVISION: _____
DATE: _____

REVISION: _____
DATE: _____

ISSUE DATE: 11/29/2023

BID DOCUMENTS

CAD DWG FILE: F2304-01-E-FP-22.dwg
DRAWN BY: RXM
CHECKED BY: JAP
DESIGNED BY: KEL

SHEET TITLE:

ENLARGED STAGE
POWER PLAN
(PHASE 3 ALT. 1)

SHEET NUMBER:

E-103

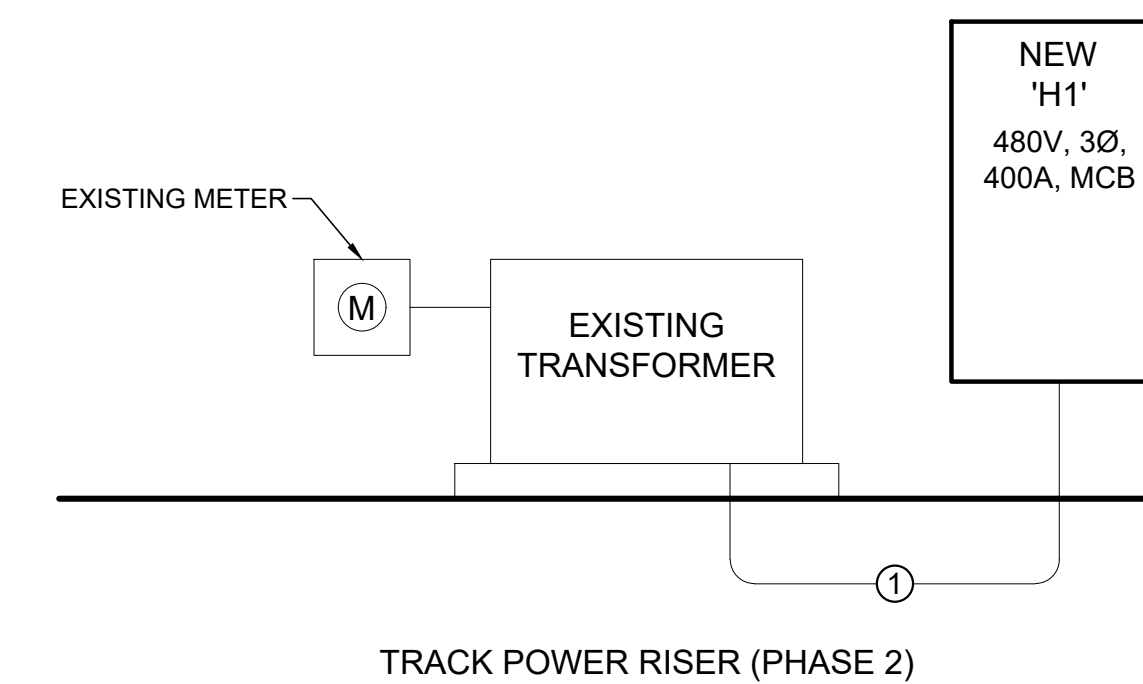
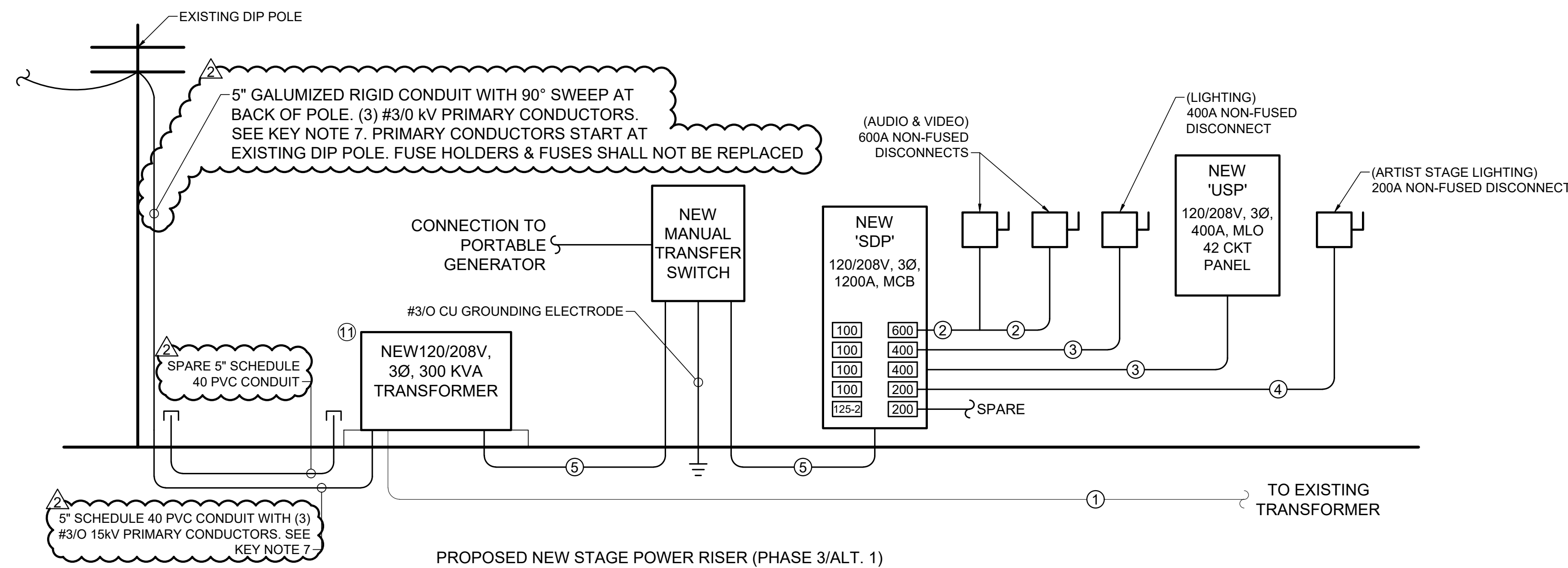
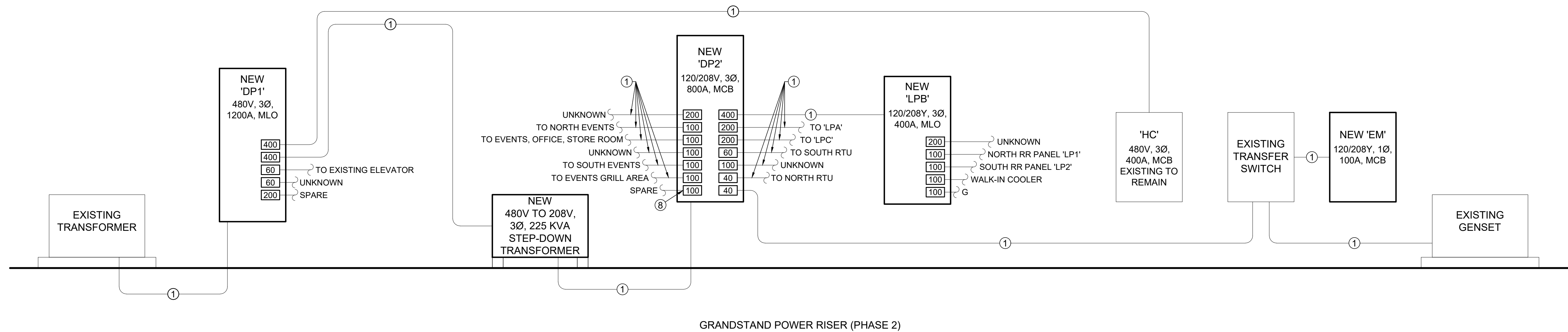
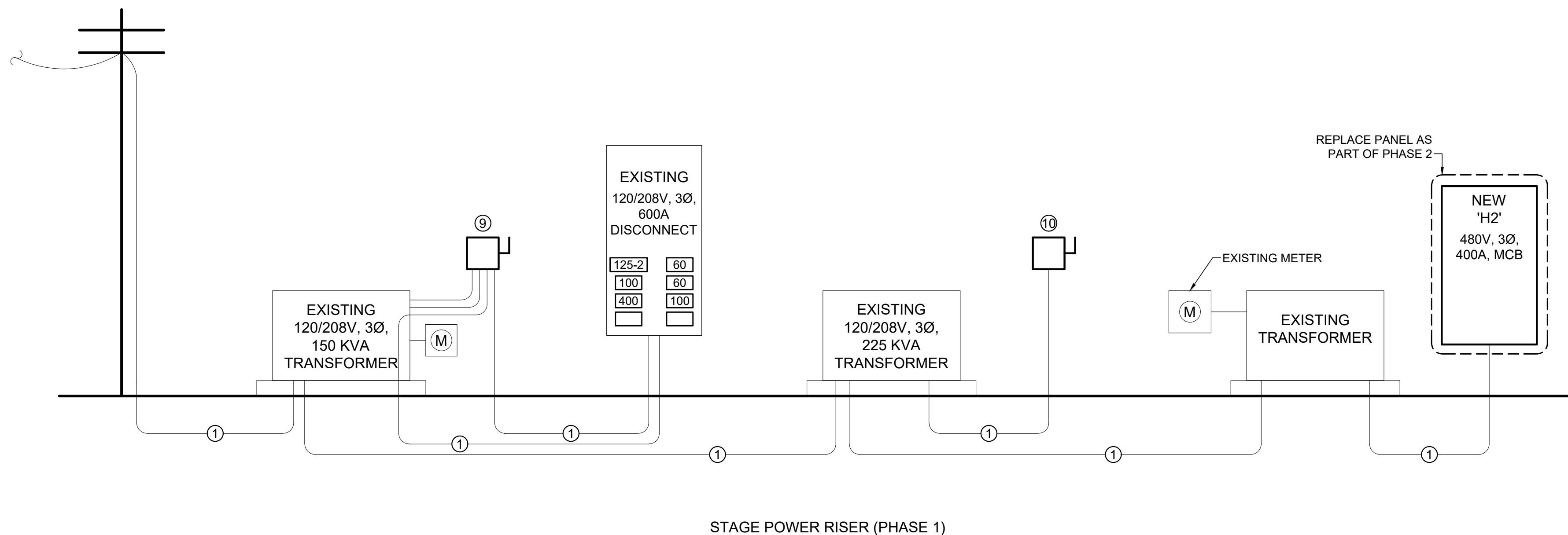
SHEET OF 30

POWER RISER GENERAL NOTES:

- CONTRACTOR IS RESPONSIBLE FOR ANY CONDUIT & CONDUCTOR MODIFICATIONS & EXTENSIONS NECESSARY FOR A FULLY FUNCTIONAL ELECTRIC SYSTEM.
- CONTRACTOR SHALL INCLUDE IN BID 1,000 FT OF #12 THHN, #10 THHN, AND #8 THHN.
- CONTRACTOR SHALL ALSO INCLUDE IN BID 100 FT OF ¾" AND 1" CONDUIT.
- CONTRACTOR SHALL PROVIDE UNIT PRICE PER FOOT FOR #12 THHN, #10 THHN, AND #8 THHN IN ¾" OR 1" CONDUIT.

POWER RISER KEY NOTES:

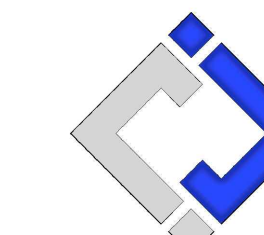
- EXISTING CONDUIT & CONDUCTORS TO REMAIN.
- (2) 4" CONDUITS, EACH WITH (4) #350 CU & (1) #1 CU GRD.
- 4" CONDUITS WITH (4) #500 CU & (1) #3 CU GRD.
- 2 ½" CONDUITS WITH (4) #3/0 CU & (1) #6 CU GRD.
- (4) 4" CONDUITS WITH (4) #350 CU & (1) #3/0 CU GRD.
- (2) 4" CONDUITS WITH (4) #500 CU & (1) #2/0 CU GRD.
- PRIMARY CONDUCTORS SHALL MEET THE FOLLOWING SPECIFICATIONS. 3/0 URD CABLE, CLASS B STRAND, WITH A WATER BLOCKING STRAND FILLER TO SEAL AND FILL THE SPACE BETWEEN THE STRANDS, TO HAVE AN EXTENDED THERMO SETTING SEMI CONDUCTING CONDUCTOR SHIELD WHICH IS FREE STRIPPING FROM THE CONDUCTOR AND BONDED TO THE INSULATION, 220 MIL TREE RETARDANT UCC4202 OR BOREALIS 4212 INSULATION, EXTRUDED THERMOSETTING SEMI CONDUCTING INSULATION WITH CONTROLLED ADHESION TO THE INSULATION HAVING A REDUCED CONCENTRIC NEUTRAL OF 11-14AWG. BARE COPPER NEUTRAL WIRES & OVERALL ENCAPSULATING JACKET OF LINEAR LOW DENSITY POLYETHYLENE EXTRUDED TO FILL IN THE SPACE BETWEEN NEUTRAL WIRES. JACKET MUST BE FREE STRIPPING FROM THE UNDERLYING INSULATION SHIELD. CABLE TO BE TANDEM EXTRUDED & DRY CURED. CABLE TO BE CONSTRUCTED PER ICEA S-94-649, ICEA S-97-682 AND AEC CS8.
- FORMERLY POWER FOR HANGING ANNOUNCER BOOTH PANEL.
- REPLACE EXISTING DISCONNECT WITH NEW 600A, 120/208Y, 3Ø, NEMA 3R, DOUBLE THROW DISCONNECT FOR STAND BY GENERATOR CONNECTION.
- REPLACE EXISTING DISCONNECT WITH NEW 800A, 120/208Y, 3Ø, NEMA 3R, DOUBLE THROW DISCONNECT FOR STANDBY GENERATOR CONNECTION.
- TRANSFORMER PRIMARY VOLTAGE 12470 GRD Y/ 7200.



Keaton E. Leisinger, P.E.
PE-2021035875
MO Certificate of Authority # 2018029680



1806 West Broadway Boulevard
Sedalia, MO 65301
660.829.9751



J-SQUARED
ENGINEERING
2400 BLUFF CREEK DR, STE. 101
COLUMBIA, MO 65203
573.234.4492



CROCKETT
ENGINEERING CONSULTANTS
1000 W. Nifong Blvd., Bldg. 1.
Columbia, Missouri 65202
(573) 447-0292
www.crockettengineering.com
Crockett Engineering Consultants, LLC
Missouri Certificate of Authority
#2000151304

OFFICE OF ADMINISTRATION
DIVISION OF FACILITIES
MANAGEMENT DESIGN AND
CONSTRUCTION

UPGRADE ELECTRICAL AND
RESTROOMS, GRANDSTAND
MISSOURI STATE
FAIRGROUNDS
2503 W. 16TH ST.
SEDALIA, MO 65301

PROJECT # T2304-01
SITE # 1501
ASSET # 3511501018

REVISION: ADDENDUM #1
DATE: 03 / 04 / 2024

REVISION: ADDENDUM #2
DATE: 03 / 12 / 2024

REVISION:
DATE:

ISSUE DATE: 11/29/2023
BID DOCUMENTS

CAD DWG FILE: F2304-01-E-DT-26.dwg
DRAWN BY: RXM
CHECKED BY: JAP
DESIGNED BY: KEL

SHEET TITLE:

ELECTRICAL
DETAILS

SHEET NUMBER:

E-501

SHEET OF 30