

REPLACE GENERATOR & AUTOMATIC TRANSFER SWITCH HIGGINSVILLE HABILITATION CENTER HIGGINSVILLE, MISSOURI

INDEX OF DRAWINGS

G-001	COVER SHEET
C-101	SITE PLAN
E-001	ELECTRICAL LEGEND AND NOTES
E-101	ELECTRICAL PLAN GENERATOR
E-501	ELECTRICAL DETAILS
E-601	ELECTRICAL ONE LINE DIAGRAM

APPLICABLE CODES/DESIGN CONSIDERATIONS

INTERNATIONAL BUILDING CODE (IBC) 2021
ASHRAE 90.1 - 2019 ENERGY STANDARD FOR BUILDINGS
NATIONAL ELECTRIC CODE (NEC) 2020



OWNER: STATE OF MISSOURI
MICHAEL L. PARSON, GOVERNOR

OFFICE OF ADMINISTRATION, DIVISION OF FACILITIES MANAGEMENT DESIGN AND CONSTRUCTION

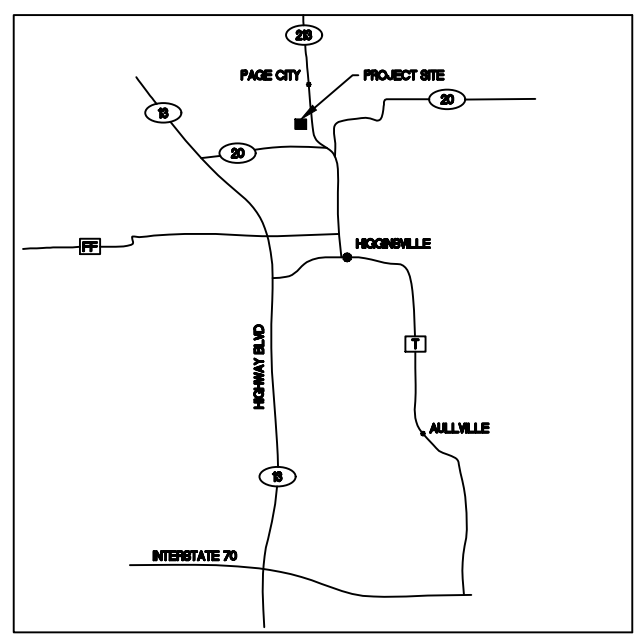
PROJECT MANAGEMENT: STATE OF MISSOURI
OFFICE OF ADMINISTRATION, DIVISION OF FACILITIES MANAGEMENT DESIGN AND CONSTRUCTION

DESIGNER: CROSSED SWORDS ENGINEERING
PROJECT NUMBER: M2317-01
SITE NUMBER: 7357
ASSET NUMBERS : MULTIPLE ASSETS

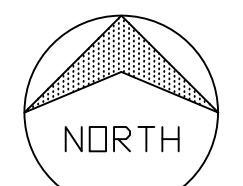


CROSSED SWORDS ENGINEERING
1619 NE OAK TREE DR.
LEE'S SUMMIT MO 64086
(816) 309-0099
Robert7721@aol.com
MO CERTIFICATE OF AUTHORITY #2016003099

SITE LOCATION MAP



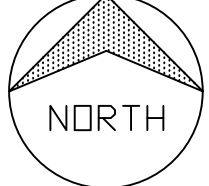
HIGGINSVILLE HABILITATION CENTER
HIGGINSVILLE, MO
Site: 7357



REGIONAL LOCATION MAP



HIGGINSVILLE HABILITATION CENTER
HIGGINSVILLE, MO
Site: 7357

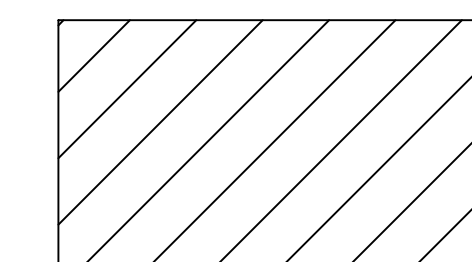




PLAN NOTES

- ① REPLACE GENERATOR & AUTOMATIC TRANSFER SWITCH. THE GENERATOR PROVIDES STANDBY POWER TO THE 4 GROUP HOME COTTAGES IN THE VICINITY OF THE GENERATOR. SEE ELECTRICAL DRAWING E-101.
- ② REPLACE UNDER GROUND ANNUNCIATOR CABLE THAT PROVIDES CONTROL SIGNAL TO AUTOMATIC CONTROLS IN COTTAGE F. APPROXIMATE LENGTH 1800 FEET HORIZONTAL DISTANCE. REMOVE AND REPLACE EXISTING ANNUNCIATOR PANEL IN COTTAGE F.
- ③ PULL BOX LOCATIONS (LATITUDE, LONGITUDE) FOR ANNUNCIATOR CABLE ROUTING.
 - 1. 39.100941, -93.728967
 - 2. 39.102224, -93.728677
 - 3. 39.103064, -93.728786
 - 4. 39.103596, -93.728289

GENERATOR LOCATION; 39.009590, -93.729067
 TRANSFORMER LOCATION; 39.099605, -93.728973



PROJECT CONSTRUCTION AREAS

① SITE PLAN
 SCALE: 1/128"=1'



STATE OF MISSOURI
 MICHAEL L. PARSON
 GOVERNOR



OFFICE OF ADMINISTRATION
 DIVISION OF FACILITIES
 MANAGEMENT DESIGN AND
 CONSTRUCTION



CROSSED SWORDS ENGINEERING
 1619 NE OAK TREE DR.
 LEE'S SUMMIT MO 64086
 (816) 309-0099 Robert7721@aol.com
 MO STATE CERTIFICATE OF
 AUTHORITY#2016003099

CONSULTANTS

REPLACE
 GENERATOR &
 AUTOMATIC
 TRANSFER SWITCH

HIGGINSVILLE HABILITATION
 CENTER
 HIGGINSVILLE, MISSOURI

PROJECT # M2317-01
 SITE # 7357
 ASSET # VARIOUS

REVISION: _____
 DATE: _____
 REVISION: _____
 DATE: _____
 REVISION: _____
 DATE: _____
 ISSUE DATE: 6/30/2022

CAD DWG FILE: C-101.DWG
 DRAWN BY: RFS
 CHECKED BY: RFS
 DESIGNED BY: RFS

SHEET TITLE:
SITE PLAN

SHEET NUMBER:


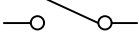

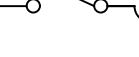


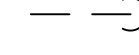




C-101

GENERAL ELECTRICAL NOTES

- EMERGENCY/STANDBY GENERATOR SYSTEM SHALL COMPLY WITH THE NATIONAL ELECTRIC CODE (NEC).
- ALL WORK SHALL BE COMPLETED IN ACCORDANCE WITH MANUFACTURERS'S LISTING AND INSTALLATION INSTRUCTIONS, AND THE RELEVANT CODES AS SPECIFIED BY THE AUTHORITY HAVING JURISDICTION'S (AHJ) APPLICABLE CODES.
- THE UTILITY INTERCONNECTION MUST BE APPROVED AND SYSTEM INSPECTED PRIOR TO OPERATION
- ALL EQUIPMENT SHALL BE UL CERTIFIED.

BASE BID AND ALTERNATES

- BASE BID. DEMOLITION AND REPLACEMENT OF THE 125 KW GENERATOR AND AUTOMATIC TRANSFER SWITCH. REPLACE ANNUNCIATOR CABLE FROM GENERATOR TO COTTAGE F. PROVIDE ALL CABLES AND CONDUITS AS INDICATED ON DRAWINGS.
- ALTERNATE NO. 1: DEMOLITION AND REPLACEMENT OF THE EXISTING SAFETY SWITCHES THAT ARE LOCATED ON THE CONCRETE PAD STRUCTURAL FRAMEWORK THAT PROTECT THE ELECTRICAL SERVICE TO THE GENERATOR AND GROUP HOMES. SEE DRAWING E-501 ELECTRICAL DETAIL DRAWING.

ABBREVIATIONS	SYMBOLS LEGEND	SITE INFORMATION	CONSTRUCTION GENERAL NOTES
<p>A AMPERE AC ALTERNATING CURRENT AFCI ARC-FAULT CIRCUIT INTERRUPTER AHJ AUTHORITY HAVING JURISDICTION AIC AMERAGE INTERRUPTION CAPACITY ATS AUTOMATIC TRANSFER SWITCH AWG AMERICAN WIRE GAUGE CB-# CIRCUIT BREAKER BLDG BUILDING DC DIRECT CURRENT DWG DRAWING EMT ELECTRICAL METALLIC TUBE GFCI GROUND FAULT CIRCUIT INTERRUPTER GFP GROUND FAULT PROTECTION GND GROUND GEC GROUNDING ELECTRODE CONDUCTOR IBC INTERNATIONAL BUILDING CODE IFC INTERNATIONAL FIRE CODE KW KILOWATT MCB MAIN CIRCUIT BREAKER MDP MAIN DISTRIBUTION PANEL MLO MAIN LUG ONLY MTS MANUAL TRANSFER SWITCH N NEUTRAL NEC NATIONAL ELECTRICAL CODE NTS NOT TO SCALE OC ON CENTER OCPD OVERCURRENT PROTECTION DEVICE P POLE PH PHASE POC POINT OF CONNECTION PV PHOTOVOLTAIC RMC RIGID METALLIC CONDUIT SC SOURCE CIRCUIT TYP TYPICAL UL UNDERWRITERS LABORATORY V VOLT OR VOLTAGE W WATT XFMR TRANSFORMER</p>	<p>  ELECTRICAL BREAKER  ELECTRICAL DISCONNECT SWITCH  ELECTRICAL FUSE  ELECTRICAL FUSED DISCONNECT SWITCH  METER  SYSTEM OR EQUIPMENT GROUND  CONDUIT DOWN  CONTINUATION OF CONDUIT  DC/AC INVERTER  POWER TRANSFORMER  CONNECTED CONDUCTOR </p>	<p>UTILITY COMPANY: HIGGINSVILLE MUNICIPAL UTILITIES CALL NUMBER TO DISCONNECT FROM UTILITY: 660-564-2106</p>	<ol style="list-style-type: none"> ALL ELECTRICAL WORK SHALL BE PERFORMED BY A QUALIFIED LICENSED ELECTRICIAN AND/OR APPRENTICES WORKING UNDER THE DIRECT SUPERVISION OF THE LICENSED CONTRACTOR. ALL WORK CARRIED OUT SHALL COMPLY WITH THE SPECIFICATIONS, APPLICABLE MUNICIPAL AND UTILITY COMPANY SPECIFICATIONS AND LOCAL JURISDICTIONAL CODES, ORDINANCES, AND APPLICABLE REGULATIONS. PRIOR TO COMMENCEMENT OF ANY WORK, THE CONTRACTOR SHALL NOTIFY THE ENGINEER OF ANY DISCREPANCIES NOTED AMONG SITE CONDITIONS, MANUFACTURER RECOMMENDATIONS, OR AUTHORITY HAVING JURISDICTION. IF THE SPECIFIED EQUIPMENT CANNOT BE INSTALLED AS SHOWN ON THESE DRAWINGS, THE CONTRACTOR SHALL SUBMIT TO THE ENGINEER OF RECORD A WRITTEN "RFI"(REQUEST FOR INFORMATION) PROPOSING AN ALTERNATIVE OR SEEKING CLARIFICATION. THE CONTRACTOR SHALL MAINTAIN IN GOOD CONDITION ONE COMPLETE SET OF PLANS WITH ALL REVISIONS, ADDENDA, AND CHANGE ORDERS ON THE PREMISES AT ALL TIMES. UNLESS NOTED OTHERWISE, THE WORK SHALL INCLUDE FURNISHING MATERIALS, EQUIPMENT, ACCESSORIES, AND LABOR NECESSARY TO COMPLETE ALL INSTALLATIONS AS INDICATED ON THE DRAWINGS. ALL MATERIALS FURNISHED AND INSTALLED SHALL BE IN STRICT ACCORDANCE WITH ALL APPLICABLE CODES, REGULATIONS, AND ORDINANCES. CONTRACTOR SHALL ISSUE ALL APPROPRIATE NOTICES AND COMPLY WITH ALL LAWS, ORDINANCES, RULES, REGULATIONS, AND LAWFUL ORDERS OF ANY PUBLIC AUTHORITY REGARDING THE PERFORMANCE OF WORK. THE CONTRACTOR SHALL INSTALL ALL EQUIPMENT AND MATERIALS IN ACCORDANCE WITH MANUFACTURER'S RECOMMENDATIONS UNLESS SPECIFICALLY STATED OTHERWISE. CONTRACTOR SHALL BE RESPONSIBLE FOR THE SAFETY OF WORK AREA, ADJACENT AREAS AND BUILDING OCCUPANTS THAT ARE LIKELY TO BE AFFECTED BY THE WORK UNDER THIS CONTRACT. WORK SHALL CONFORM TO ALL OSHA REQUIREMENTS AND THE LOCAL JURISDICTION. CONTRACTOR SHALL LEAVE PREMISES IN A CLEAN CONDITION. ALL DEBRIS AND OTHER REFUSE SHALL BE REMOVED FROM THE SITE AND DISPOSED OF IN A LAWFUL MANNER PER SPECIFICATIONS. THE CONTRACTOR SHALL PROTECT EXISTING IMPROVEMENTS, PAVEMENTS, CURBS, LANDSCAPING AND STRUCTURES NOT PART OF THE SCOPE OF WORK AS IDENTIFIED IN THESE PLANS.
	<p>APPLICABLE CODES</p> <p>NATIONAL ELECTRIC CODE (NEC), 2017 INTERNATIONAL BUILDING CODE (IBC), 2018 INTERNATIONAL FIRE CODE (IFC), 2018</p>		



CROSSED SWORDS ENGINEERING
1619 NE OAK TREE DR.
LEE'S SUMMIT MO 64086
(816) 309-0099 Robert7721@aol.com
MO STATE CERTIFICATE OF
AUTHORITY#2016003099

CONSULTANTS

REPLACE
GENERATOR &
AUTOMATIC
TRANSFER SWITCH

HIGGINSVILLE HABILITATION
CENTER
HIGGINSVILLE, MISSOURI

PROJECT # M2317-01
SITE # 7357
ASSET #

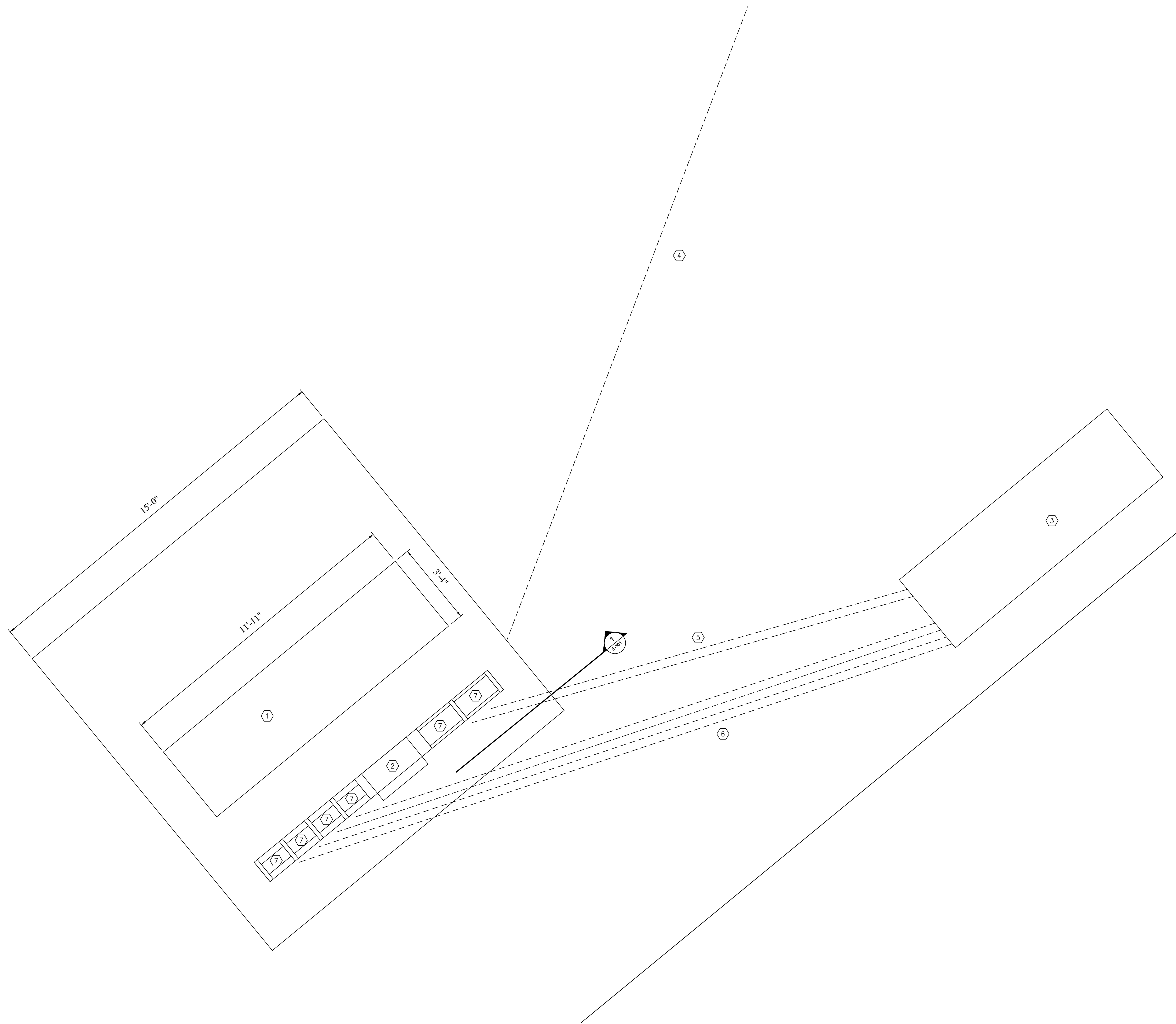
REVISION: _____
DATE: _____
REVISION: _____
DATE: _____
REVISION: _____
DATE: _____
ISSUE DATE: 6/30/2022

CAD DWG FILE: E-001.DWG
DRAWN BY: RFS
CHECKED BY: RFS
DESIGNED BY: RFS

SHEET TITLE:
ELECTRICAL
LEGEND AND NOTES

SHEET NUMBER:

E-001



1 ELECTRICAL PLAN
SCALE: 1/2"=1'

BASE BID AND ALTERNATES

1. BASE BID, DEMOLITION AND REPLACEMENT OF THE 125 KW GENERATOR AND AUTOMATIC TRANSFER SWITCH. REPLACE ANNUNCIATOR CABLE FROM GENERATOR TO COTTAGE F. PROVIDE ALL CABLES AND CONDUITS AS INDICATED ON DRAWINGS.
2. ALTERNATE NO. 1: DEMOLITION AND REPLACEMENT OF THE EXISTING SAFETY SWITCHES THAT ARE LOCATED ON THE CONCRETE PAD STRUCTURAL FRAMEWORK THAT PROTECT THE ELECTRICAL SERVICE TO THE GENERATOR AND GROUP HOMES. SEE DRAWING E-501 ELECTRICAL DETAIL DRAWING.

ELECTRICAL GENERAL NOTES

1. ALL ELECTRICAL WORK SHALL BE UNDERTAKEN IN ACCORDANCE WITH NFPA 70, NATIONAL ELECTRICAL CODE AS ADOPTED BY MO AND ALL SUPPLEMENTARY STATE AND LOCAL REQUIREMENTS.
2. CONTRACTOR SHALL BE RESPONSIBLE FOR INSTALLATION OF COMPLETE AND FUNCTIONAL ELECTRICAL SYSTEMS IN ACCORDANCE WITH THE NATIONAL ELECTRICAL CODE AND THE INTENT REPRESENTED ON THE DRAWINGS. IT SHALL BE THE CONTRACTORS RESPONSIBILITY TO FURNISH ALL LABOR, MATERIAL, EQUIPMENT, AND SERVICES NECESSARY OR REQUIRED.
3. WHEN CIRCUITS ARE COMBINED IN A COMMON RACEWAY, THE CONDUCTORS SHALL BE DERATED AS REQUIRED BY NFPA 70, AND WIRE SIZES INCREASED BY THE CONTRACTOR AS NECESSARY.
4. CONTRACTOR SHALL INCREASE WIRE SIZES BASED ON CIRCUIT LENGTHS AS REQUIRED.
5. ALL RACEWAY SHALL HAVE SEPARATE GROUNDING CONDUCTOR SIZED IN ACCORDANCE WITH NFPA 70 REQUIREMENTS.
6. MODIFY ELECTRICAL COMPONENTS AS REQUIRED FOR NEW ELECTRICAL EQUIPMENT CONNECTIONS. REFER TO EQUIPMENT SCHEDULES FOR SPECIFIC ELECTRICAL INFORMATION.

PLAN NOTES

- 1 REMOVE AND REPLACE EXISTING GENERATOR. NEW GENERATOR SHALL PROVIDE 125 KW 400A 208/3PH POWER. PROVIDE GENERATOR WITH INTEGRAL BASE MOUNTED DIESEL FUEL TANK 1055 GALLON CAPACITY.
- 2 REMOVE AND REPLACE AUTOMATIC TRANSFER SWITCH. NEW ATS SWITCH SHALL BE RATED FOR 400A 208/3PH.
- 3 EXISTING TRANSFORMER/JUNCTION BOX
- 4 REPLACE UNDER GROUND ANNUNCIATOR CABLE THAT PROVIDES CONTROL SIGNAL TO AUTOMATIC CONTROLS IN COTTAGE F.
- 5 EXISTING 2 X 4" UG CONDUITS FROM TRANSFORMER TO 400 AMP SAFETY SHUT OFFS.
- 6 EXISTING 4 X 2 1/2" UG CONDUITS FROM 200 AMP SAFETY SHUT OFFS FOR GROUP HOMES TO JUNCTION BOX.
- 7 REPLACE EXISTING SAFETY SHUT OFFS. SEE DRAWING E-501.

STATE OF MISSOURI
MICHAEL L. PARSON
GOVERNOR



OFFICE OF ADMINISTRATION
DIVISION OF FACILITIES
MANAGEMENT DESIGN AND
CONSTRUCTION



CROSSED SWORDS ENGINEERING
1619 NE OAK TREE DR.
LEE'S SUMMIT MO 64086
(816) 309-0099 Robert7721@aol.com
MO STATE CERTIFICATE OF
AUTHORITY#2016003099

CONSULTANTS

REPLACE
GENERATOR &
AUTOMATIC
TRANSFER SWITCH

HIGGINSVILLE HABILITATION
CENTER
HIGGINSVILLE, MISSOURI

PROJECT # M2317-01
SITE # 7357
ASSET # VARIOUS

REVISION:	_____
DATE:	_____
REVISION:	_____
DATE:	_____
REVISION:	_____
DATE:	_____
ISSUE DATE:	6/30/2022

CAD DWG FILE: E-101.DWG
DRAWN BY: RES
CHECKED BY: RES
DESIGNED BY: RES

SHEET TITLE:
ELECTRICAL PLAN
GENERATOR

SHEET NUMBER:

E-101



OFFICE OF ADMINISTRATION
DIVISION OF FACILITIES
MANAGEMENT DESIGN AND
CONSTRUCTION



CROSSED SWORDS ENGINEERING
1619 NE OAK TREE DR.
LEE'S SUMMIT MO 64086
(816) 309-0099 Robert7721@aol.com
MO STATE CERTIFICATE OF
AUTHORITY#2016003099

CONSULTANTS

REPLACE
GENERATOR &
AUTOMATIC
TRANSFER SWITCH

HIGGINSVILLE HABILITATION
CENTER
HIGGINSVILLE, MISSOURI

PROJECT # M2317-01
SITE # 7357
ASSET #

REVISION: _____
DATE: _____
REVISION: _____
DATE: _____
REVISION: _____
DATE: _____
ISSUE DATE: 6/30/2022

CAD DWG FILE: E-501.DWG
DRAWN BY: RFS
CHECKED BY: JWC
DESIGNED BY: RFS

SHEET TITLE:
ELECTRICAL
DETAILS

SHEET NUMBER:

E-501

SHEET 5 OF 6
6/30/2023

BASE BID AND ALTERNATES

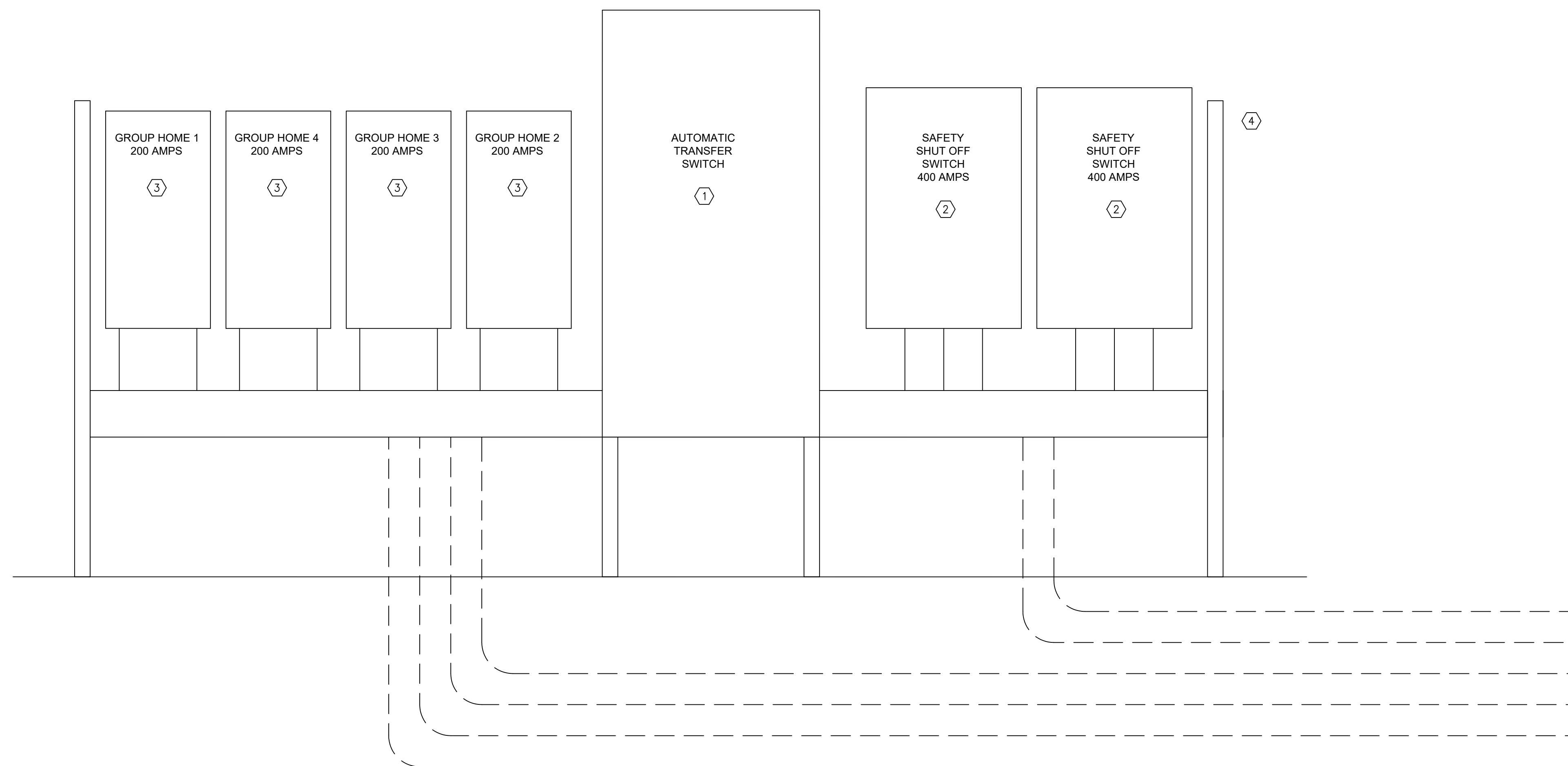
1. BASE BID. DEMOLITION AND REPLACEMENT OF THE 125 KW GENERATOR AND AUTOMATIC TRANSFER SWITCH. REPLACE ANNUNCIATOR CABLE FROM GENERATOR TO COTTAGE F. PROVIDE ALL CABLES AND CONDUITS AS INDICATED ON DRAWINGS.
2. ALTERNATE NO. 1: DEMOLITION AND REPLACEMENT OF THE EXISTING SAFETY SWITCHES THAT ARE LOCATED ON THE CONCRETE PAD STRUCTURAL FRAMEWORK THAT PROTECT THE ELECTRICAL SERVICE TO THE GENERATOR AND GROUP HOMES.

ELECTRICAL GENERAL NOTES

1. ALL ELECTRICAL WORK SHALL BE UNDERTAKEN IN ACCORDANCE WITH NFPA 70, NATIONAL ELECTRICAL CODE AS ADOPTED BY MO AND ALL SUPPLEMENTARY STATE AND LOCAL REQUIREMENTS.
2. CONTRACTOR SHALL BE RESPONSIBLE FOR INSTALLATION OF COMPLETE AND FUNCTIONAL ELECTRICAL SYSTEMS IN ACCORDANCE WITH THE NATIONAL ELECTRICAL CODE AND THE INTENT REPRESENTED ON THE DRAWINGS. IT SHALL BE THE CONTRACTORS RESPONSIBILITY TO FURNISH ALL LABOR, MATERIAL, EQUIPMENT, AND SERVICES NECESSARY OR REQUIRED.
3. WHEN CIRCUITS ARE COMBINED IN A COMMON RACEWAY, THE CONDUCTORS SHALL BE DERATED AS REQUIRED BY NFPA 70, AND WIRE SIZES INCREASED BY THE CONTRACTOR AS NECESSARY.
4. CONTRACTOR SHALL INCREASE WIRE SIZES BASED ON CIRCUIT LENGTHS AS REQUIRED.
5. ALL RACEWAY SHALL HAVE SEPARATE GROUNDING CONDUCTOR SIZED IN ACCORDANCE WITH NFPA 70 REQUIREMENTS.
6. MODIFY ELECTRICAL COMPONENTS AS REQUIRED FOR NEW ELECTRICAL EQUIPMENT CONNECTIONS. REFER TO EQUIPMENT SCHEDULES FOR SPECIFIC ELECTRICAL INFORMATION.

PLAN NOTES

- ① REMOVE AND REPLACE AUTOMATIC TRANSFER SWITCH. NEW ATS SWITCH SHALL BE RATED FOR 400A 208/3PH.
- ② REPLACE EXISTING 208V, 3PH, 400 AMP SAFETY SHUT OFF. REUSE EXISTING STEEL FRAME FOR MOUNTING AND SUPPORT.
- ③ REPLACE EXISTING 208V, 3PH, 200 AMP SAFETY SHUT OFF. REUSE EXISTING STEEL FRAME FOR MOUNTING AND SUPPORT.
- ④ CLEAN AND PAINT STEEL FRAMEWORK. COLOR TO MATCH EXISTING CONDITIONS.



UG CONDUITS
TO FROM
TRANSFORMER
JUNCTION BOX

1 ATS AND SAFETY SHUT OFF SECTION VIEW
E-501 NOT TO SCALE



OFFICE OF ADMINISTRATION
DIVISION OF FACILITIES
MANAGEMENT DESIGN AND
CONSTRUCTION



CROSSED SWORDS ENGINEERING
1619 NE OAK TREE DR.
LEE'S SUMMIT MO 64086
(816) 309-0099 Robert7721@aol.com
MO STATE CERTIFICATE OF
AUTHORITY#2016003099
CONSULTANTS

REPLACE
GENERATOR &
AUTOMATIC
TRANSFER SWITCH

HIGGINSVILLE HABILITATION
CENTER
HIGGINSVILLE, MISSOURI

PROJECT # M2317-01
SITE # 7357
ASSET #

REVISION: _____
DATE: _____
REVISION: _____
DATE: _____
REVISION: _____
DATE: _____
ISSUE DATE: 6/30/2022

CAD DWG FILE: E-601.DWG
DRAWN BY: RFS
CHECKED BY: JWC
DESIGNED BY: RFS

SHEET TITLE:
**ELECTRICAL
ONE LINE DIAGRAM**

SHEET NUMBER:

E-601

SHEET 6 OF 6
6/30/2023

HIGGINSVILLE HABILITATION CENTER GENERATOR AND ATS REPLACEMENT - 125 KW GENERATOR

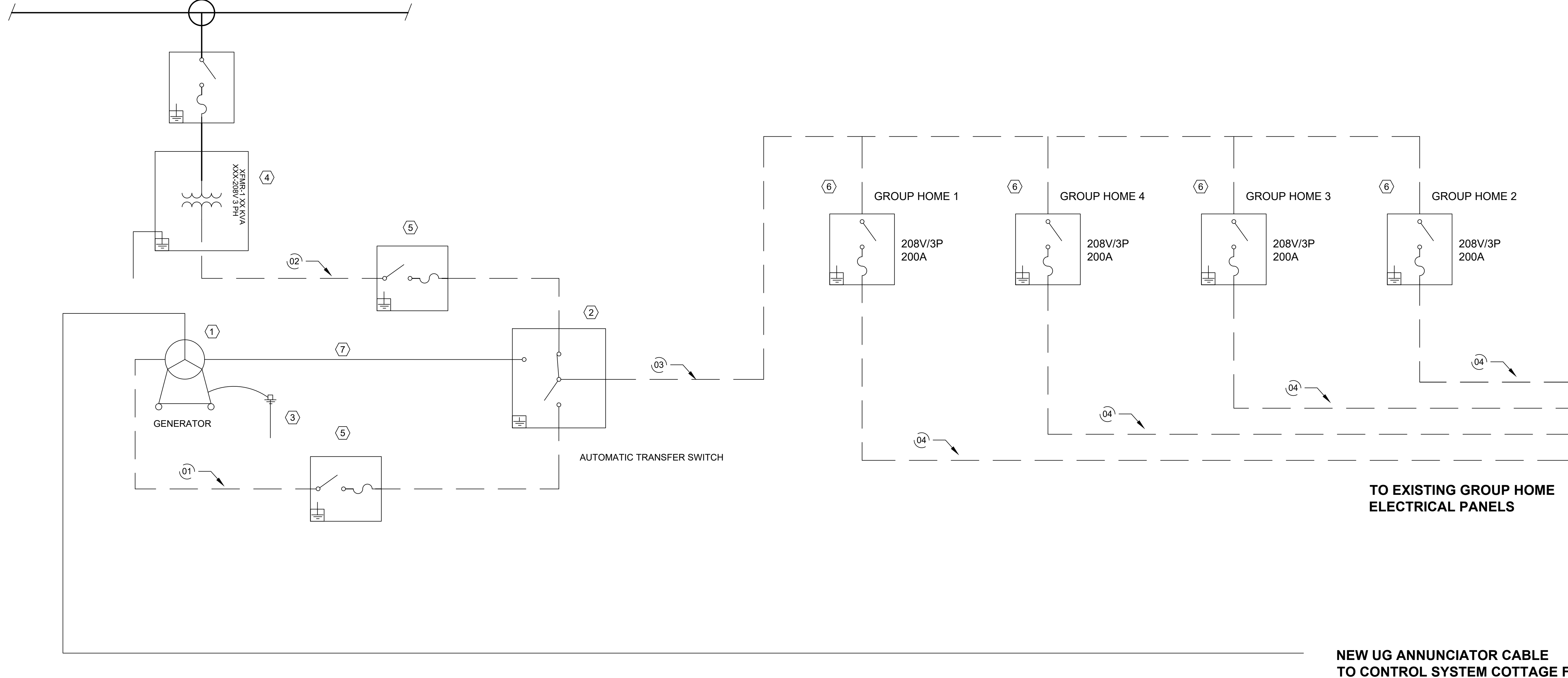
BASE BID AND ALTERNATES

1. BASE BID. DEMOLITION AND REPLACEMENT OF THE 125 KW GENERATOR AND AUTOMATIC TRANSFER SWITCH. REPLACE ANNUNCIATOR CABLE FROM GENERATOR TO COTTAGE F. PROVIDE ALL CABLES AND CONDUITS AS INDICATED ON DRAWINGS.
2. ALTERNATE NO. 1: DEMOLITION AND REPLACEMENT OF THE EXISTING SAFETY SWITCHES THAT ARE LOCATED ON THE CONCRETE PAD STRUCTURAL FRAMEWORK THAT PROTECT THE ELECTRICAL SERVICE TO THE GENERATOR AND GROUP HOMES. SEE DRAWING E-501 ELECTRICAL DETAIL DRAWING.

SHEET NOTES

1. REPLACE EXISTING GENERATOR AND ATS, CONDUIT AND CABLES AS REQUIRED.
2. SEE ELECTRICAL SPECIFICATIONS FOR ADDITIONAL EQUIPMENT INFORMATION.

EXISTING ELECTRICAL UTILITY SERVICE



EQUIPMENT LIST - BASIS OF DESIGN		
ID	QTY	DESCRIPTION
1	1	NEW GENERATOR - 125KW 208V/3 PHASE 400 AMPS WITH DIESEL FUEL TANK 1055 GAL BASE MOUNTED. CUMMINS C125D6D OR APPROVED EQUAL. SEE SPECIFICATIONS
2	1	NEW AUTOMATIC TRANSFER SWITCH 208V/3PH RATED AT 400 AMPS. MODEL OTEC400 OR APPROVED EQUAL. NEMA 3R FOR OUTDOOR INSTALLATION
3	1	EXISTING GROUND ROD, SYSTEM, VERIFY.
4	1	EXISTING TRANSFORMER, XXXV-208V, 3 PHASE.
5	1	ALTERNATE 1. NEW DISCONNECT 208V/3PH 400 AMP WITH FUSEABLE LINK
6	1	ALTERNATE 1. NEW DISCONNECT 208V/3PH 200 AMP WITH FUSEABLE LINK
7	1	NEW ATS TO GENERATOR CONTROL SIGNAL CONDUCTOR AND CONDUIT.

WIRE AND CONDUIT SCHEDULE					
ID	CONDUCTOR	EGC	CONDUIT	CONDUCTORS IN CONDUIT	TEMPERATURE RATING
01	750 KCMIL THWN-2	2 AWG	4"	5	75C
02	750 KCMIL THWN-2	2 AWG	4"	5	75C
03	750 KCMIL THWN-2	2 AWG	4"	5	75C
04	300 KCMIL THWN-2	6 AWG	2 1/2"	5	75C

1. ALL POWER CONDUCTORS AND CONDUIT ARE EXISTING. VERIFY SIZES. ALL CONDUIT TO BE PER SPECIFICATIONS UNLESS OTHERWISE REQUIRED BY LOCAL AHJ.
2. ALL CONDUIT SIZES ARE BASED ON MINIMUM PER NEC CODE REQUIREMENTS.
3. WIRE AMPACITY IS BASED ON NUMBER OF WIRES PER CONDUIT. IF CONDUITS ARE INSTALLED DIFFERENTLY THAN SHOWN, WIRE SIZES MAY BE AFFECTED.