

## **ADDENDUM NO. 1**

**TO: PLANS AND SPECIFICATIONS FOR STATE OF MISSOURI**

**Bronze Door Vestibule  
Missouri State Capitol Building  
Capitol Complex  
Jefferson City, Missouri  
PROJECT NO.: 02203-02**

**Bid Open Date: 1:30PM, Thursday, December 18, 2025 (Not Changed)**

**Bidders are hereby informed of the following:**

### **SPECIFICATION CHANGES:**

1. Section 00 5213 – Construction Contract:  
Article 2, remove: “The contract completion date is MONTH, DAY, YEAR.”
2. Section 01 3233 – Photographic Documentation:  
Part 1, Paragraph 1.4, A, revise to read: “Photographer Qualifications: An individual familiar with the project, with a basic understanding of lighting, composition, and exposure. The ability to document the subject in an informative, visually clear, and organized manner is paramount to successful documentation.”  
  
Part 1, Paragraph 1.4, B, revise to read: “Videographer Qualifications: An individual familiar with the project, with a basic understanding of lighting, composition, and exposure. The ability to document the subject in an informative, visually clear, and organized manner is paramount to successful documentation.”
3. Section 04 0342 – Treatment of Historic Stone Masonry Flooring:  
Part 2, Paragraph 2.3, A, revise to read: “Chembuild 135 Prime Coat applied at 4.0–6.0 mils DFT and 1094 Endura-Shield Top Coat applied at 2.0–3.0 mils DFT by Tnemec Company, Inc., represented by Taylor Buerky (888) 698-6363, or approved equal.”
4. Section 08 8853 – Security Glazing:  
Part 3, Paragraph 3.7, A, 1 add: “a. Acceptable Substitutions, subject to compliance with requirements.” and “1) Global Security Glazing, Secur-tem + Poly”  
  
Part 3, Paragraph 3.7, B, 1 add: “a. Acceptable Substitutions, subject to compliance with requirements.” and “1) Global Security Glazing, Secur-tem + Poly”  
  
Part 3, Paragraph 3.7, C, 1 add: “a. Acceptable Substitutions, subject to compliance with requirements.” and “1) Global Security Glazing, Accessgard”

### **DRAWING CHANGES:**

1. Sheet A1.0 – Interior Elevation & Sections:
  - a. Revise detail 1 – Interior Elevation of Vestibule: correct glazing type at upper glazing units to glazing type SG-3.
  - b. Revise detail 2 – Interior Elevation of Vestibule: Add glazing type tags to upper glazing units, noting type SG-3 to be provided.
  - c. Revise detail B – Interior Elevation of Vestibule: Add glazing type tags to upper glazing units, noting type SG-3 to be provided.

### **GENERAL CLARIFICATIONS:**

1. None

### **GENERAL COMMENTS:**

1. The Pre-Bid Meeting was held on December 3, 2025, followed by a walk-trough of the jobsite. The Pre-Bid Meeting sign-in sheet is attached.
2. The deadline for technical questions is 12:00PM on December 11, 2025.
3. Bidders desiring to perform a site inspection should contact OA/FMDC Specialized Trades Supervisor Paul Ridenhour at (573) 751-7306, [paul.ridenhour@oa.mo.gov](mailto:paul.ridenhour@oa.mo.gov) to schedule a time to inspect the site
5. Please contact April Howser, Contract Specialist, at (573) 751-0053 or [april.howser@oa.mo.gov](mailto:april.howser@oa.mo.gov) for questions about bidding procedures, MBE/WBE/SDVE Goals, and other submittal requirements.
6. Changes to, or clarifications of, the bid documents are only made as issued in addenda.
7. All correspondence with respect to this project must include the State of Missouri project number as indicated above.
8. Current Plan holders list available online at: <https://www.oafmdcplanroom.com/projects/3086/plan-holders/o2203-02-bronze-door-vestibule-missouri-state-capitol-building>
9. Prospective Bidders contact American Document Solutions, 1400 Forum Blvd Suite 1C, Columbia MO 65201, (573) 446-7768 to order official plans and specifications.
- 10. All bids shall be submitted on the bid form without additional terms and conditions, modifications, or stipulations. Each space on the bid form shall be properly filled including a bid amount for the Unit Prices. Failure to do so will result in rejection of the bid.**
- 11. MBE/WBE/SDVE participation requirements can be found in DIVISION 00. The MBE/WBE/SDVE participation goals are 0%0%/3%, respectively. Only certified firms as of the bid opening date can be used to satisfy the MBE/WBE/SDVE participation goals for this project. If a bidder is unable to meet a participation goal, a Good Faith Effort Determination Form must be completed. Failure to complete this process will result in rejection of the bid.**
- 12. The Contractor shall pay not less than the prevailing hourly rate of wages for work of a similar character in the locality in which the work is performed, as determined by the Missouri Department of Labor and Industrial Relations. Bidders are to adhere to Prevailing Wage Hourly Rate of Wages, and the Department of Labor and Industrial Relations can be contacted to determine the applicable wage rate for the work on this project.**

### **ATTACHMENTS:**

1. Pre-Bid Meeting Sign-In Sheet
2. A1.0 – Interior Elevation & Sections

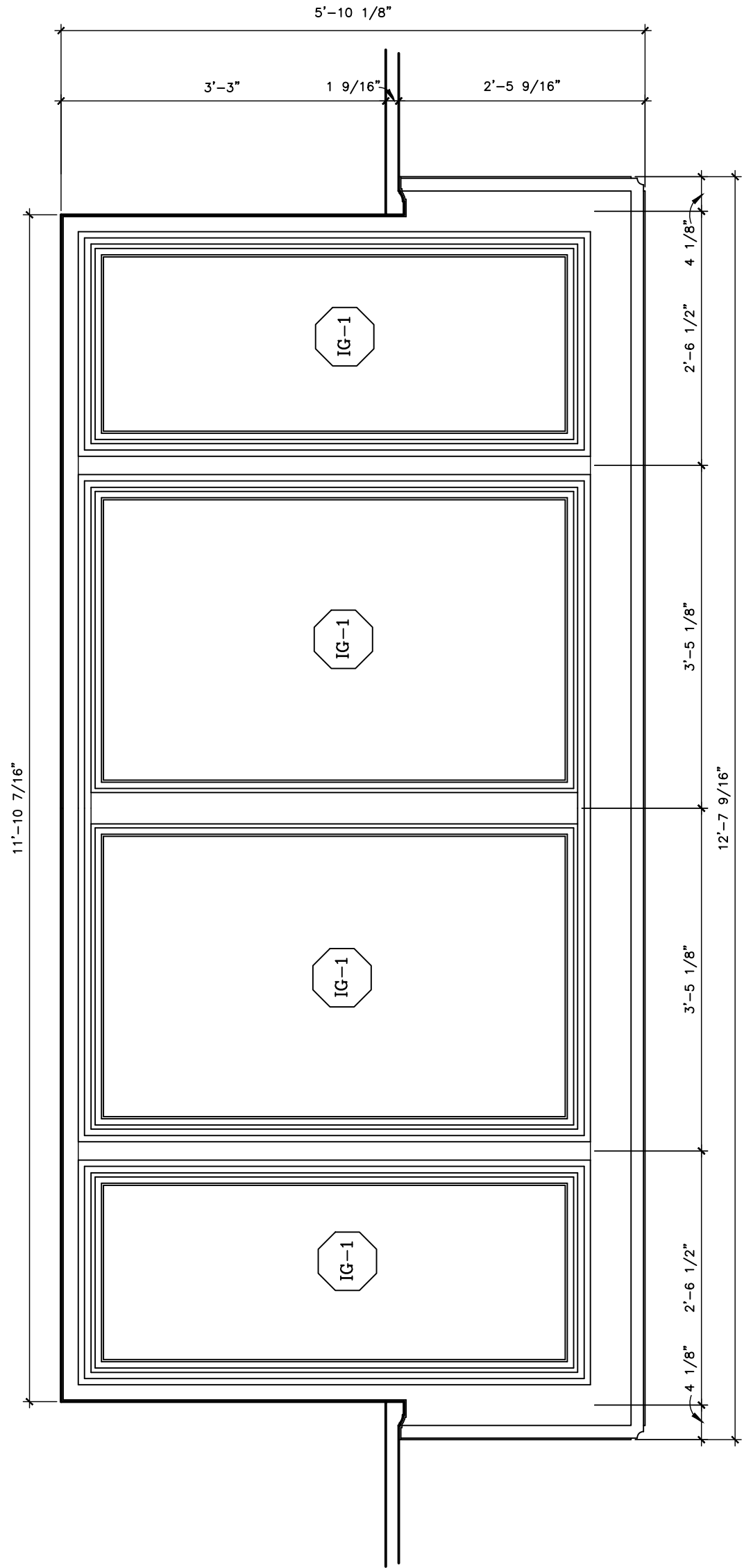
**December 10, 2025**

**END ADDENDUM NO. 1**

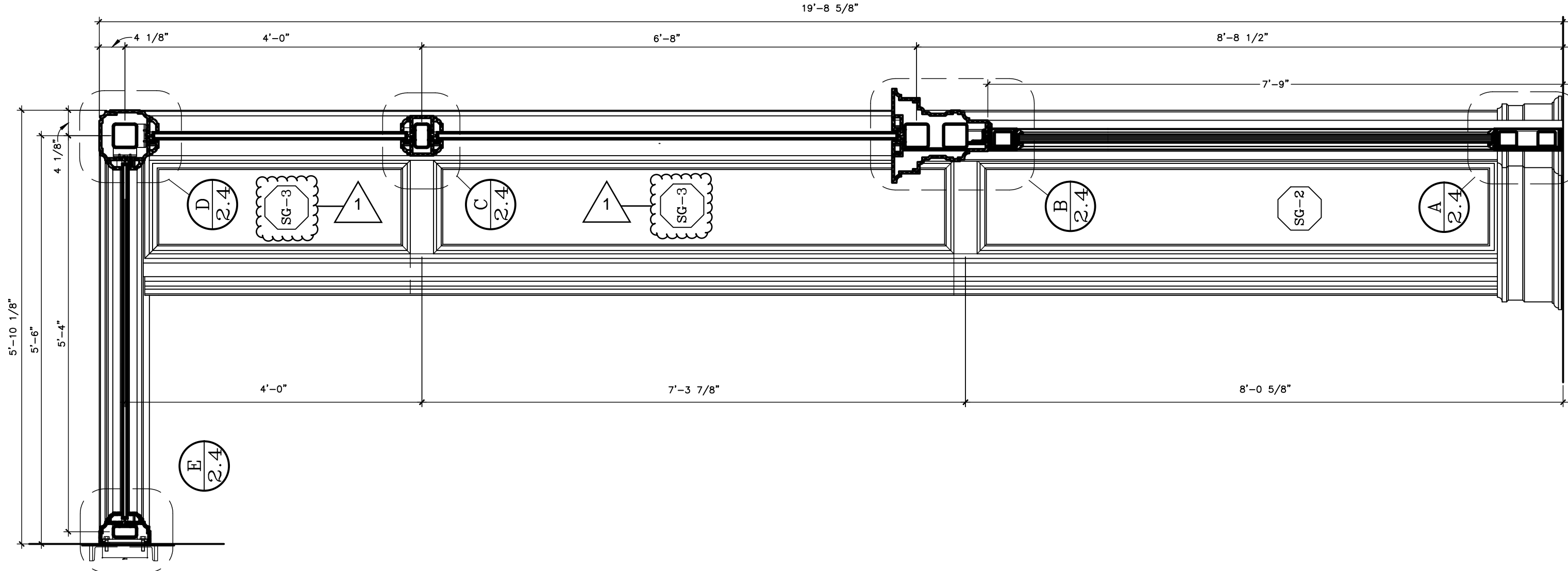
## PRE-BID MEETING SIGN-IN

**PROJECT:** Bronze Door Vestibule – Missouri State Capitol Building  
**PROJECT NO.:** HP1075.2101.00 **OWNER PROJECT NO.:** 02203-02  
**LOCATON:** Jefferson City, Missouri **DATE:** December 3, 2025

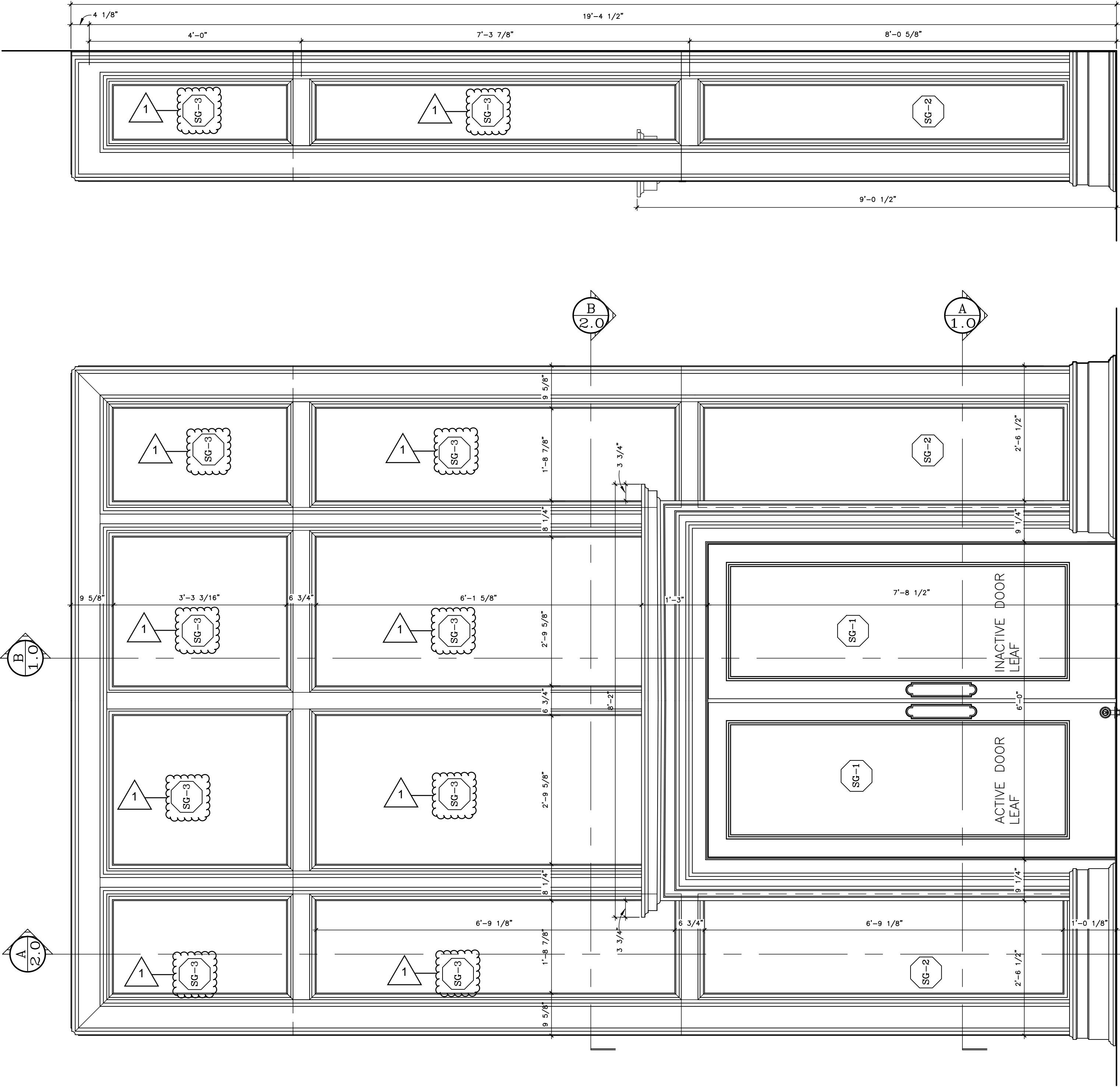
Name	Organization	Email/Phone
1. Adam Rush	Budrovich	arush@budrovich.com 573-301-9114
2. RICHARD BAIRD	HISTORICAL ARTS & CASTING	RE@HISTORICALARTS.COM
3. KELLY HAWKINS	5 Oaks	Kelly.hawkins@5oaksassociates.com 573-682-1314
4. Michael Hof	Hof Construction inc.	Michael.hof@hofconstruction.com 314-645-2200
5. David Conley	OA - FMDC	David.D.Conley@oa.mo.gov
6. Eric Markway	OA - FMDC	Eric.markway@oa.mo.gov
7. Robert Rehagen	OA - FMDC	Robert.Rehagen@oa.mo.gov
8. Andrew Friedmeyer	OA - FMDC	Andrew.Friedmeyer@oa.mo.gov
9. VAUGHN PRUST	Pro-Prust, LLC	573-694-1095 vprust@prustbuilders.com
10. Paul Ridenhour	FMDC	Paul.Ridenhour@OA.Mo.gov
11. Katie Pruitt	Five Oaks	admin@5oaksassociates.com
12. Connie Melton	OA-FMDC	Connie.melton@oa.mo.gov
13. Zac Kormanis	Treanor	zkormanis@treanor.design
14.		
15.		
16.		
17.		
18.		
19.		
20.		
21.		
22.		



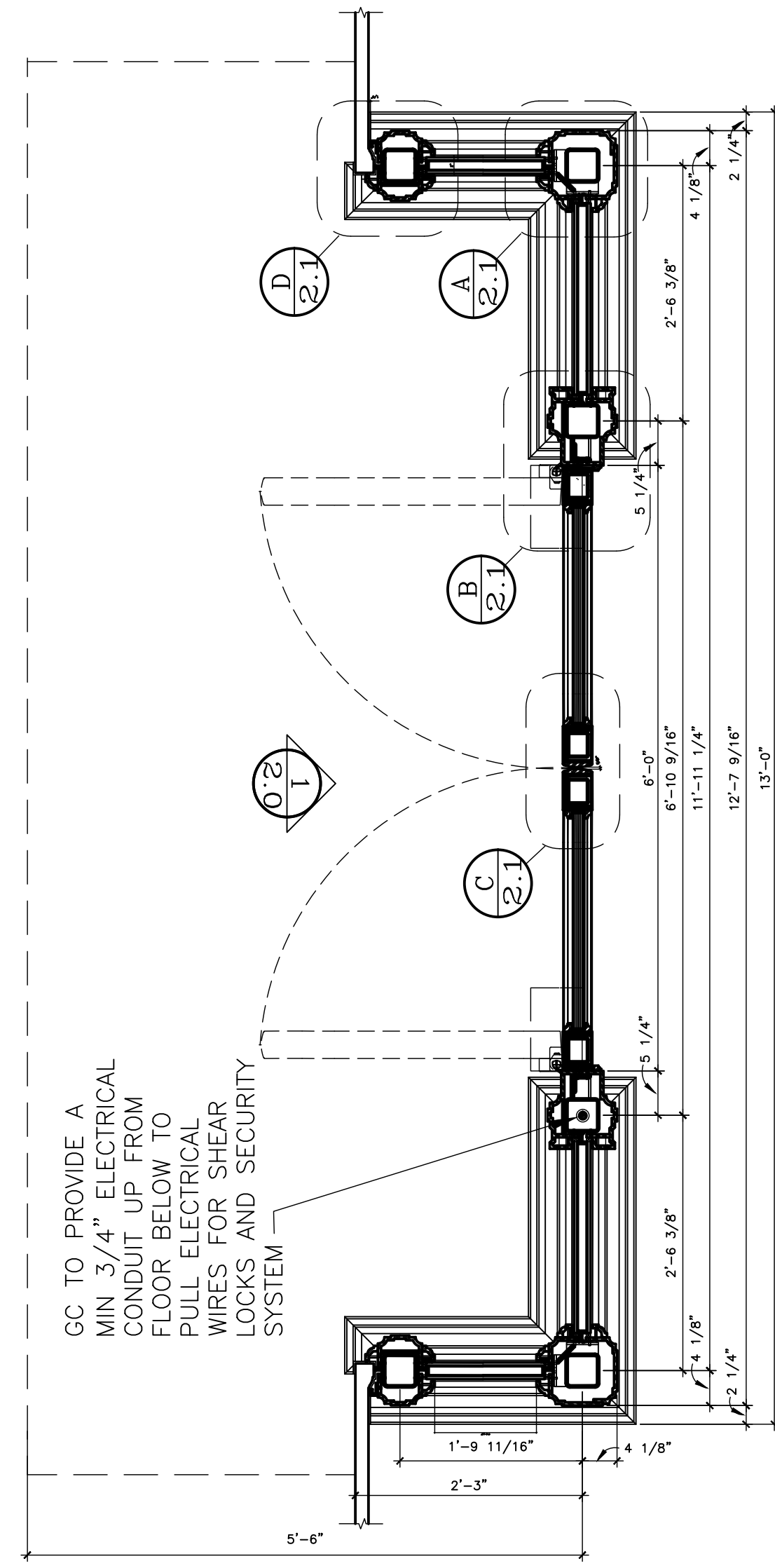
③ TOP VIEW OF VESTIBULE  
SCALE 3/4"=1'-0"



⑥ VERTICAL SECTION  
SCALE 3/4"=1'-0"



① INTERIOR ELEVATION OF VESTIBULE  
SCALE 3/4"=1'-0"



④ HORIZONTAL SECTION  
SCALE 3/4"=1'-0"

GLAZING TYPE SCHEDULE			
TYPE	BASIC DESIGN	MAKEUP	PERFORMANCE
IG-1	INSULATED GLASS UNIT	1/4" GLASS, 1/2" GAP ARGON FILLED, 1/4" GLASS	THICK 1"
LEVEL 3	BULLET RESISTANT		
SG-1	MCGRORY GLASS 60 PLUS	1/4" GLASS ON POLYCARBONATE CORE	HP WHITE TP .0500.03 1 1/4"
INSULATED LEVEL 3	BULLET RESISTANT		
SG-2	MCGRORY GLASS 60 PLUS	TYPE SGT INSULATED TO VITRO SOLARBAN 70 ATTACODEFEND TEMPERED #2	HP WHITE TP .0500.03 2"
INSULATED FORCED ENTRY	RESISTANT		
SG-3	MCGRORY GLASS 60 PLUS	DEFENDENTRY 1.4 & UL972	ASTM F1233 CLASS 1 1/8"

STATE OF MISSOURI  
MIKE KEHOE,  
GOVERNOR

JOY COLEMAN - ARCHITECT  
LICENSE NO. A-2008034756  
PROFESSIONAL SEAL

1811 BALTIMORE AVE.  
KANSAS CITY, MO 64108  
(816)-221-0900  
treanor.design  
COA: A-2020027110

OFFICE OF  
ADMINISTRATION  
DIVISION OF FACILITIES  
MANAGEMENT,  
DESIGN AND  
CONSTRUCTION

BRONZE DOOR  
VESTIBULE

MO STATE CAPITOL BUILDING  
201 W CAPITOL AVE  
JEFFERSON CITY, MO 65101

PROJECT # O2203-02  
SITE # 1001  
ASSET # 3101001040

REVISION: ADDENDUM 1  
DATE: 12/08/2025  
REVISION: \_\_\_\_\_  
DATE: \_\_\_\_\_  
REVISION: \_\_\_\_\_  
DATE: \_\_\_\_\_  
ISSUE DATE: 06/06/2025

REVIT FILE: XXX  
DRAWN BY: RAB  
CHECKED BY: JC  
DESIGNED BY: ZVK

SHEET TITLE:  
INTERIOR ELEVATION &  
SECTIONS

SHEET NUMBER:  
**A1.0**  
4 OF 15 SHEETS  
JULY 14, 2025