

CARPETING AND PAINTING KANSAS CITY DOLIR OFFICE BUILDING

KANSAS CITY, MISSOURI

OWNER: STATE OF MISSOURI
MICHAEL L. PARSON,
GOVERNOR
OFFICE OF ADMINISTRATION

DESIGNER: STATE OF MISSOURI - OFFICE OF ADMINISTRATION
DIVISION OF FACILITIES MANAGEMENT DESIGN AND
CONSTRUCTION: 301 W. HIGH STREET, JEFFERSON CITY,
MO. 65102

PROJECT
MANAGEMENT: OFFICE OF ADMINISTRATION
DIVISION OF FACILITIES MANAGEMENT,
DESIGN AND CONSTRUCTION

PROJECT NUMBER: O243401

ASSET NUMBER: 3101018001



KANSAS CITY DOLIR OFFICE BUILDING
1410 GENESSEE, KANSAS CITY MO 64102

SHEET LIST:

G-001 TITLE SHEET
G-002 SITE MAPS AND KEYPLANS
I-101 1st FLOOR PHASES & ROOM SCHEDULE
I-102 2nd FLOOR PHASES & ROOM SCHEDULE
I-401 ENLARGED PLAN, PHASE 1 & 5 ROOM SCHEDULE
I-402 ENLARGED PLAN, PHASE 2, 3 & 4 ROOM SCHEDULE
I-403 ENLARGED PLAN, PHASE 6 ROOM SCHEDULE
I-404 ENLARGED PLAN, PHASE 7 ROOM SCHEDULE
I-405 ENLARGED PLAN, PHASE 8, 12 & 13 ROOM SCHEDULE
I-406 ENLARGED PLAN, PHASE 9, 10 & 11 ROOM SCHEDULE
I-407 ENLARGED PLAN, PHASE 14 ROOM SCHEDULE

SHEET NUMBER:

G-001

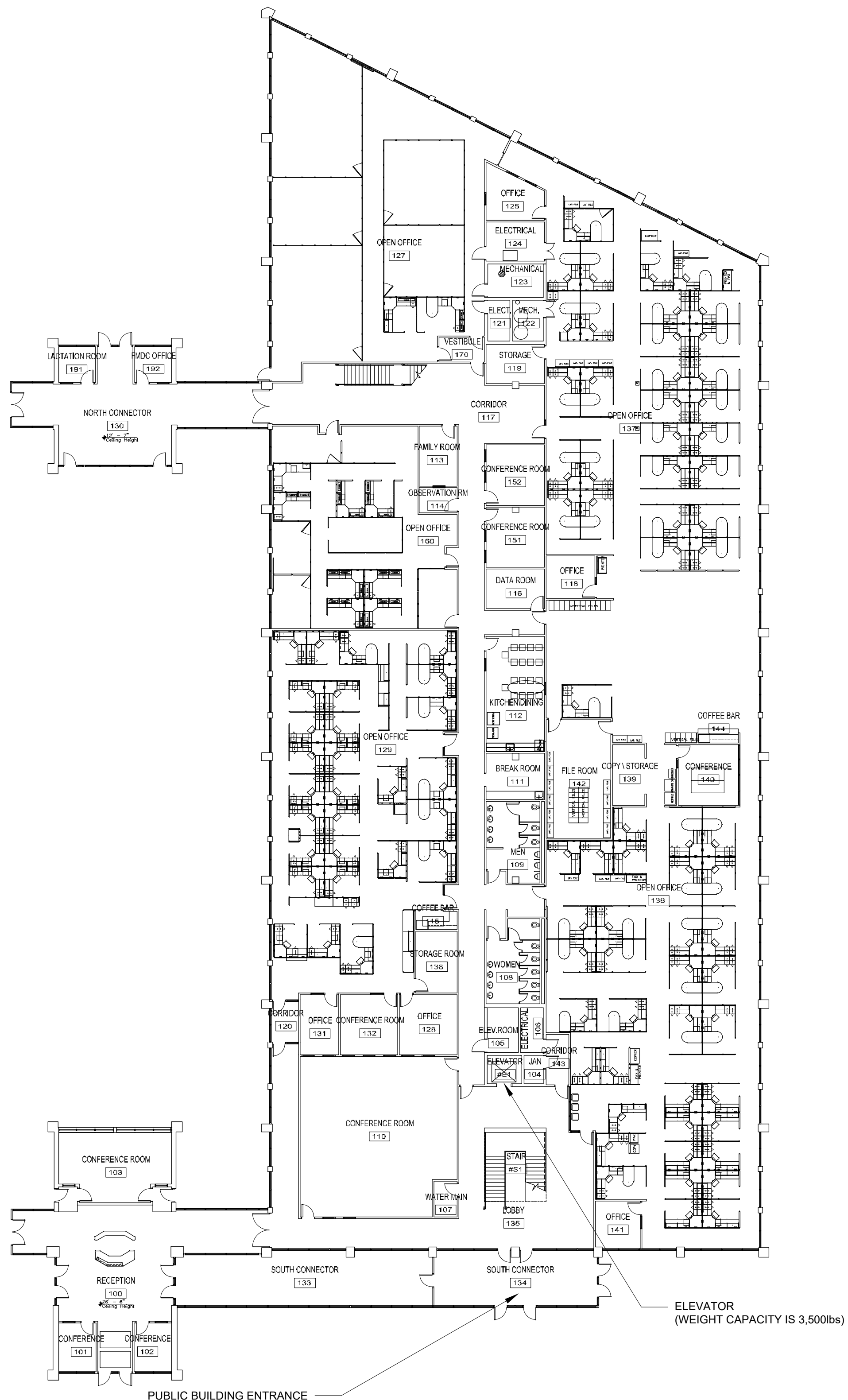
1 OF 11 SHEETS
09/27/2024



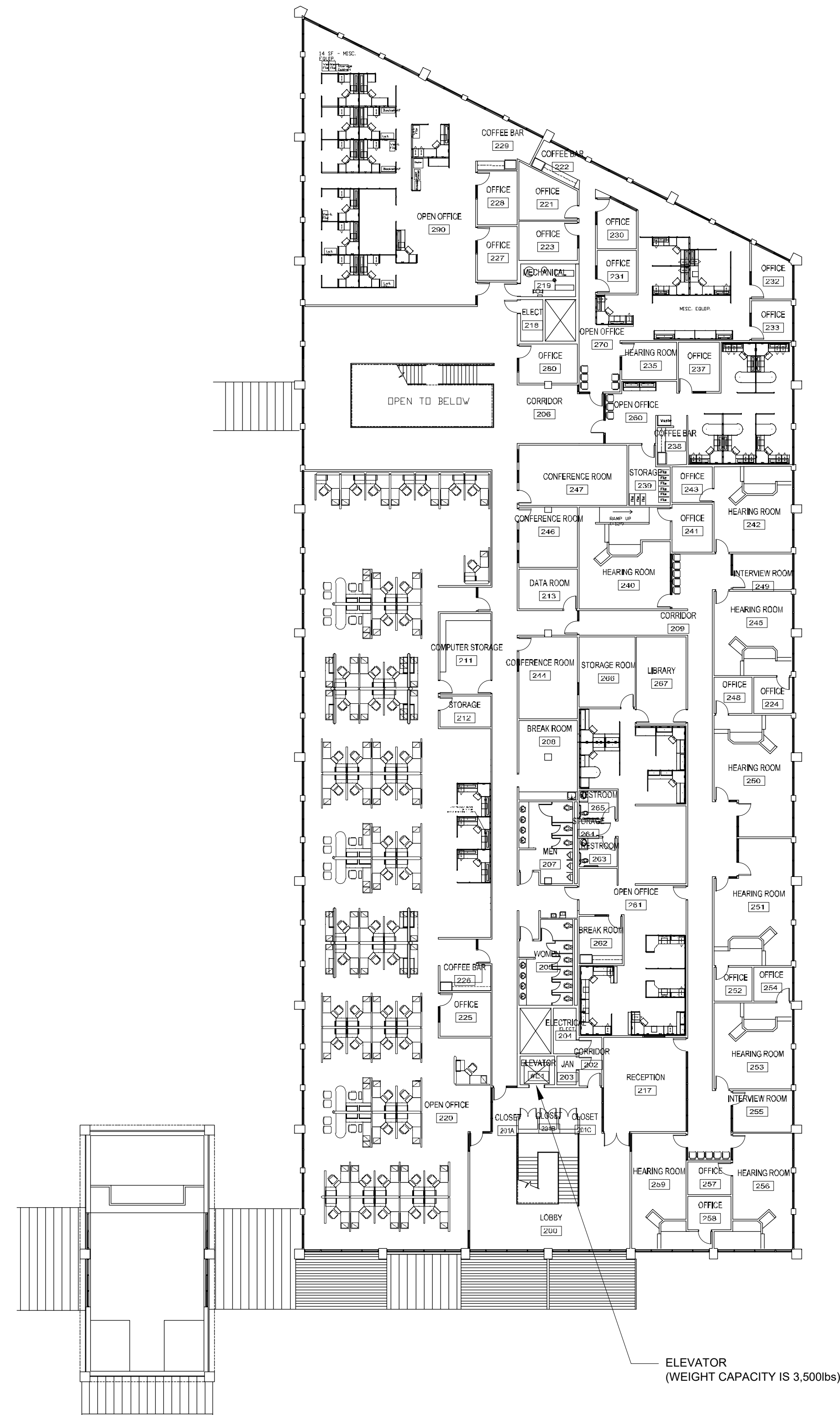
Brad M. Schaefer - Architect
MO# A-2009027294

GENERAL NOTES:

1. ALL DIMENSIONS RELATIVE TO EXISTING CONDITIONS ARE APPROXIMATE AND MAY VARY. CONTRACTOR SHALL VERIFY ALL DIMENSIONS AND EXISTING CONDITIONS. MINOR DIFFERENCES BETWEEN WHAT IS SHOWN AND THE ACTUAL DIMENSIONS WILL NOT BE CONSIDERED THE BASIS FOR AN EXTRA OR CREDIT.
2. CUBICAL CONFIGURATIONS ARE SUBJECT TO CHANGE AND SHOULD BE VERIFIED BEFORE THE START OF EACH PHASE.
3. PROTECT ALL FIXED EQUIPMENT, FURNITURE AND FINISHES DURING CONSTRUCTION.
4. DURING WORK AND ANY DAMAGE INCURRED SHALL BE REPAIRED AND REPAINTED BY CONTRACTOR.
5. CONTRACTOR TO FIELD VERIFY ALL IN FLOOR DATA AND ELECTRICAL POINTS PRIOR TO EACH PHASE. LOCATIONS AND ACCESS TO BE MAINTAINED DURING INSTALLATION.
6. CONTRACTOR TO RECYCLE ALL CARDBOARD PACKAGING REFUSE OFF SITE.
7. CONTRACTOR TO DISPOSE OF TRASH AND DEBRIS OFF SITE ON A DAILY BASIS.
8. PATHWAYS, ELEVATORS, LOADING DOCKS AND ANY BUILDING CARTS, CORRIDORS OR STORAGE AREAS USED BY THE CONTRACTOR SHALL BE PROTECTED AND KEEP FREE FROM DEFECT.
9. CONTRACTOR TO USE NOTED ENTRANCES TO WORKSPACE.
10. DOORS ARE TO BE KEPT SECURE AND LOCKED. DO NOT PROP OPEN DOORS IN ANY AREA OF THE FACILITY.
11. TECHNICAL ITEMS SUCH AS BUT NOT LIMITED TO WHITEBOARDS, DIGITAL DISPLAYS AND MEDIA INSTALLATIONS ARE TO BE REMOVED AND REPLACED BY THE OWNER AND COORDINATED WITH THE CONSTRUCTION ADMINISTRATOR.
12. CONTRACTOR TO TRANSPORT OWNER SUPPLIED CARPET TILES FROM 615 E. 13TH STREET DOCK LOCATION TO PROJECT LOCATION AS NEEDED PER PHASE OF CONSTRUCTION. MATERIALS TO BE STORED ON-SITE IN CONTRACTOR SUPPLIED CONEX STORAGE CONTAINER.



1 FIRST FLOOR SITE DIAGRAM
SCALE: N.T.S.



2 SECOND FLOOR SITE DIAGRAM
SCALE: N.T.S.



3 SITE LOCATION
SCALE: N.T.S.

OFFICE OF
ADMINISTRATION
DIVISION OF FACILITIES
MANAGEMENT / DESIGN
AND CONSTRUCTION
DEPARTMENT OF
LABOR & INDUSTRIAL
RELATIONS

CARPETING AND PAINTING

KANSAS CITY DOLIR
OFFICE BUILDING

KANSAS CITY, MO

PROJECT # O243401
SITE # 1018
FACILITY # 3101018001

REVISION: _____
DATE: _____
REVISION: _____
DATE: _____
REVISION: _____
DATE: _____
ISSUE DATE: 9/27/2024

CAD DWG FILE: O243401
DRAWN BY: Kirkwj
CHECKED BY: BMS
DESIGNED BY: Kirkwj

SHEET TITLE:
SITE MAPS &
KEYPLANS

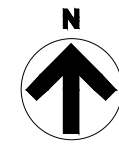
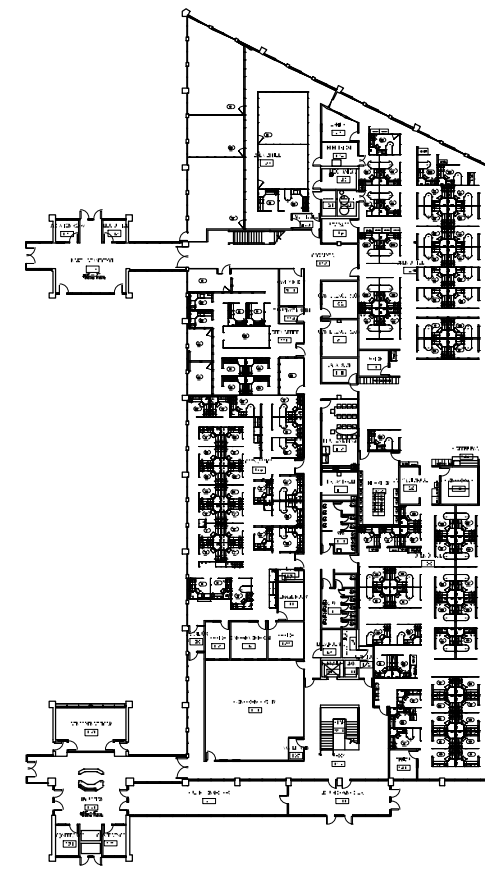
SHEET NUMBER:

G-002

2 OF 11 SHEETS
09/27/2024



Brad M. Schaefer - Architect
MO# A-2009027294



KEY PLAN
KANSAS CITY DOLIR OFFICE BUILDING - 1st FLOOR

ROOM FINISH SCHEDULE - 1st FLOOR

PHASE	NUMBER	ROOM			FINISH			NOTES
		NAME	PERIMETER	AREA	PAINT	FLOORING	WALL BASE	
Phase 1	115	COFFEE BAR	29'-10"	48 Sq.Ft.	(1),(2)	N/A	(4)	---
	120	CORRIDOR	33'-8"	64 Sq.Ft.	(1),(2)	(3)	(4)	---
	128	OFFICE	57'-2"	204 Sq.Ft.	(1)	(3)	(4)	---
	129	OPEN OFFICE	279'-2"	3708 Sq.Ft.	(1),(2)	(3)	(4)	---
	131	OFFICE	47'-11"	136 Sq.Ft.	(1)	(3)	(4)	---
Phase 2	132	CONFERENCE ROOM	57'-1"	204 Sq.Ft.	(1),(2)	(3)	(4)	---
	138	STORAGE ROOM	49'-9"	149 Sq.Ft.	(1)	(3)	(4)	---
	113	FAMILY ROOM	47'-4"	133 Sq.Ft.	(1),(2)	(3)	(4)	---
Phase 3	114	OBSERVATION RM	30'-0"	57 Sq.Ft.	(1)	(3)	(4)	---
	160	OPEN OFFICE	199'-11"	1973 Sq.Ft.	(1),(2)	(3)	(4)	---
	127	OPEN OFFICE	273'-6"	3611 Sq.Ft.	(1),(2)	(3)	(4)	---
Phase 4	170	VESTIBULE	34'-0"	66 Sq.Ft.	(1)	(3)	(4)	---
	118	OFFICE	44'-2"	122 Sq.Ft.	(1)	(3)	(4)	---
	119	STORAGE	48'-2"	134 Sq.Ft.	(1)	(3)	(4)	---
Phase 5	125	OFFICE	51'-3"	150 Sq.Ft.	(1)	(3)	(4)	---
	137	OPEN OFFICE	334'-8"	4816 Sq.Ft.	(1),(2)	(3)	(4)	---
	136	OPEN OFFICE	556'-3"	6613 Sq.Ft.	(1)	(3)	(4)	---
	139	COPY STORAGE	40'-0"	115 Sq.Ft.	(1)	(3)	(4)	---
	140	CONFERENCE	58'-8"	214 Sq.Ft.	(1)	(3)	(4)	---
Phase 6	141	OFFICE	44'-8"	124 Sq.Ft.	(1)	(3)	(4)	---
	142	FILE ROOM	88'-6"	447 Sq.Ft.	(1)	(3)	(4)	---
	144	COFFEE BAR	26'-5"	34 Sq.Ft.	(1)	N/A	(4)	---
	111	BREAK ROOM	54'-3"	157 Sq.Ft.	(1)	N/A	(4)	---
	112	KITCHEN/DINING	84'-1"	395 Sq.Ft.	(1)	N/A	(4)	---
	117	CORRIDOR	592'-10"	2220 Sq.Ft.	(2)	(3),(5)	(4)	---
	130	NORTH CONNECTOR	183'-8"	976 Sq.Ft.	(1)	(3)	(4)	---
Phase 7	151	CONFERENCE ROOM	60'-3"	205 Sq.Ft.	(1),(2)	(3)	(4)	---
	152	CONFERENCE ROOM	67'-3"	207 Sq.Ft.	(1),(2)	(3)	(4)	---
	191	LACTATION ROOM	35'-2"	77 Sq.Ft.	(1),(2)	(3)	(4)	---
	192	FMDC OFFICE	35'-2"	77 Sq.Ft.	(1)	(3)	(4)	---
	#E1	ELEVATOR	30'-5"	58 Sq.Ft.	N/A	(6)	N/A	---
	#S1	STAIR	65'-8"	267 Sq.Ft.	N/A	(5)	N/A	---
	100	RECEPTION	231'-2"	1278 Sq.Ft.	(1)	(3),(6)	(4)	---
	101	CONFERENCE	41'-10"	107 Sq.Ft.	(1),(2)	(3)	(4)	---
	102	CONFERENCE	41'-10"	107 Sq.Ft.	(1),(2)	(3)	(4)	---
	103	CONFERENCE ROOM	89'-0"	420 Sq.Ft.	(1),(2)	(3)	(4)	---
135	LOBBY	388'-11"	1549 Sq.Ft.	(1),(2)	(3)	(4)	---	
143	CORRIDOR	35'-5"	67 Sq.Ft.	(1)	(3)	(4)	---	
			4618'-10"	32717 Sq.Ft.				---

- BASE WALL PAINT COLOR: SHERWIN WILLIAMS, EG-SHEL, SW 7555, PATIENCE
CEILING PAINT COLOR: SHERWIN WILLIAMS, EG-SHEL, SW7005, PURE WHITE
- ACCENT WALL PAINT COLOR: SHERWIN WILLIAMS, EG-SHEL, SW6528 COSMOS. PAINT WALL BETWEEN ARROWS SHOWN ON ENLARGED PLANS
- MOHAWK GROUP, STYLE: FIRST ONE UP II BR443, COLOR: 959 PREFERENCE, 24"x24"
OWNER TO SUPPLY CARPET - N.I.C.
- JOHNSONITE TRADITIONAL VINYL 4" TOELESS COVE WALL BASE, COLOR: "CHARCOAL WG"
- VINYL STAIR TREAD AND LANDINGS TO BE REPLACED.
MANUFACTURER: NORAMENT ROUND STAIR TREAD AND FLOOR TILE, COLOR 0749 STONE GREY.
- WALK-OFF CARPET.
MOHAWK GROUP-TUFF STUFF II COLLECTION, STYLE: FIRST STEP II GT315, COLOR: 955 COBALT,
24"x24", OWNER TO SUPPLY CARPET - N.I.C.

GENERAL NOTES:

- ALL DIMENSIONS RELATIVE TO EXISTING CONDITIONS ARE APPROXIMATE AND MAY VARY. CONTRACTOR SHALL VERIFY ALL DIMENSIONS AND EXISTING CONDITIONS. MINOR DIFFERENCES BETWEEN WHAT IS SHOWN AND THE ACTUAL DIMENSIONS WILL NOT BE CONSIDERED THE BASIS FOR AN EXTRA OR CREDIT.
- CUBICAL CONFIGURATIONS ARE SUBJECT TO CHANGE AND SHOULD BE VERIFIED BEFORE THE START OF EACH PHASE.
- PROTECT ALL FIXED EQUIPMENT, FURNITURE AND FINISHES DURING CONSTRUCTION.
- DURING WORK AND ANY DAMAGE INCURRED SHALL BE REPAIRED AND REPAINTED BY CONTRACTOR.
- CONTRACTOR TO FIELD VERIFY ALL IN FLOOR DATA AND ELECTRICAL POINTS PRIOR TO EACH PHASE. LOCATIONS AND ACCESS TO BE MAINTAINED DURING INSTALLATION.
- CONTRACTOR TO RECYCLE ALL CARDBOARD PACKAGING REFUSE OFF SITE.
- CONTRACTOR TO DISPOSE OF TRASH AND DEBRIS OFF SITE ON A DAILY BASIS.
- PATHWAYS, ELEVATORS, LOADING DOCKS AND ANY BUILDING CARTS, CORRIDORS OR STORAGE AREAS USED BY THE CONTRACTOR SHALL BE PROTECTED AND KEEP FREE FROM DEFECT.
- CONTRACTOR TO USE NOTED ENTRANCES TO WORKSPACE.
- DOORS ARE TO BE KEPT SECURE AND LOCKED. DO NOT PROP OPEN DOORS IN ANY AREA OF THE FACILITY.
- TECHNICAL ITEMS SUCH AS BUT NOT LIMITED TO WHITEBOARDS, DIGITAL DISPLAYS AND MEDIA INSTALLATIONS ARE TO BE REMOVED AND REPLACED BY THE OWNER AND COORDINATED WITH THE CONSTRUCTION ADMINISTRATOR.
- CONTRACTOR TO TRANSPORT OWNER SUPPLIED CARPET TILES FROM 615 E. 13TH STREET DOCK LOCATION TO PROJECT LOCATION AS NEEDED PER PHASE OF CONSTRUCTION. MATERIALS TO BE STORED ON-SITE IN CONTRACTOR SUPPLIED CONEX STORAGE CONTAINER.

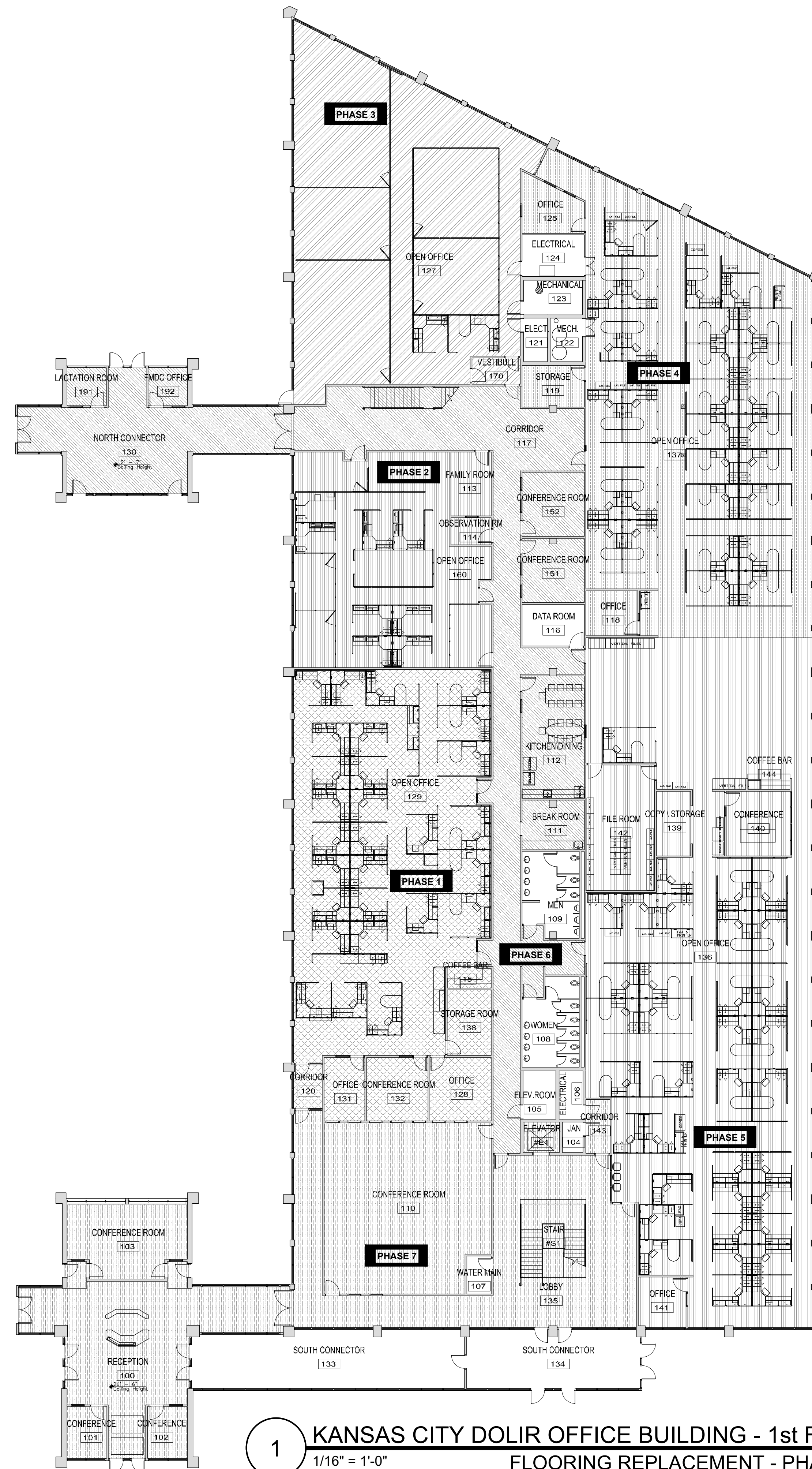
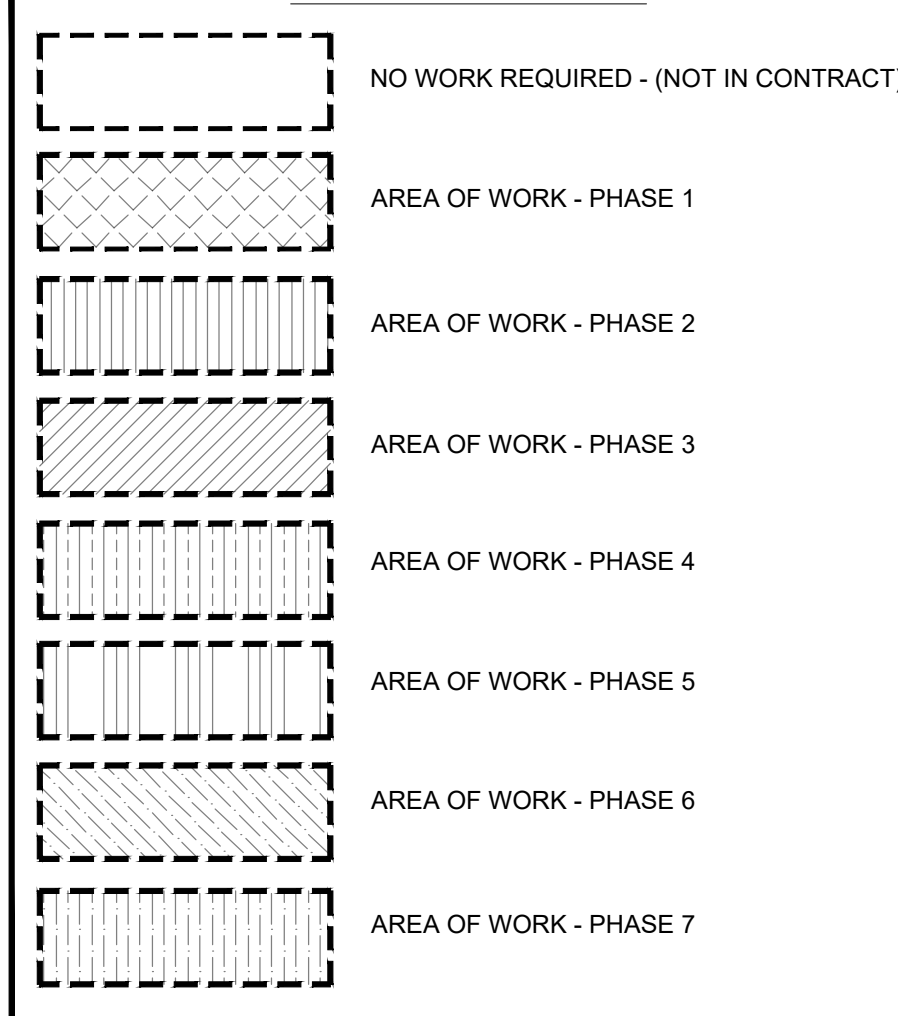
CARPET RENOVATION NOTES:

- ALL ELECTRICAL AND DATA FLOOR OUTLETS SHALL BE RETAINED AND ACCOUNTED FOR IN NEW CARPET INSTALLATION.
- INSTALL NEW CARPET TILES PROVIDED BY OWNER. MOHAWK 24" X 24" CARPET TILE, WITH ADHESIVE GLUE PROVIDED BY OWNER IN A 1/4 TURN PATTERN. CARPET TILE INSTALLATION SHALL BE IN ACCORDANCE WITH MANUFACTURERS INSTRUCTIONS AND BEST PRACTICE. INSTALLATION SHALL RESULT IN A CONTINUOUS AND COHESIVE FINISHED PRODUCT WITH NO TRANSITIONS UNLESS OTHERWISE NOTED. ALL PHASES SHALL STOP AT NEAREST FULL TILE RUN TO ACCEPT THE NEXT PHASES LAY DOWN IN A CONTINUOUS MANNER.
- ALL CUBICAL CONFIGURATIONS, SHELVES, FILES, AND NON PERSONAL FURNITURE SHALL REMAIN IN THE SUITE FOR THE DURATION OF THE PROJECT.
- CONTRACTOR SHALL MOVE OR LIFT AND REPLACE ALL FURNITURE ITEMS PER PHASE.
- CUBICAL STRUCTURES ARE TO BE LIFTED IN PLACE OR SLID INTACT SO AS NOT TO FULLY DISASSEMBLE OFFICE SPACE LAYOUTS. CUBICLE STRUCTURES TO BE PLACED BACK INTO ORIGINAL LOCATION.
- CUBICLES AND OFFICE SPACES WILL BE EMPTIED OF ALL PERSONAL AND TECHNOLOGY ITEMS BY OWNER.

PAINT RENOVATION NOTES:

- REMOVE ALL EXISTING VINYL COVE WALL BASE AND DISPOSE.
- ALL WALLS TO BE REPAIRED AND PREPARED TO A LEVEL 4 FINISH OR GREATER PRIOR TO ANY FINISH BEING APPLIED TO SURFACES.
- VERIFY ALL PAINT COLOR DESIGNATIONS ON THIS SHEET PRIOR TO EACH PHASE WITH OWNER/ CONSTRUCTION MANAGER.
- PAINT TO BE SUPPLIED AND APPLIED BY CONTRACTOR. ALL WALLS TO BE PAINTED BASE COLOR UNLESS SPECIFIED TO BE PAINTED ACCENT COLOR.
- PROTECT ALL NEWLY PAINTED WALLS THROUGHOUT CONSTRUCTION FROM DAMAGE. TOUCH UP ALL FINISHED SURFACES AS NEEDED.

AREA OF WORK KEY:



1 KANSAS CITY DOLIR OFFICE BUILDING - 1st FLOOR
1/16" = 1'-0"
FLOORING REPLACEMENT - PHASES 1-7

OFFICE OF
ADMINISTRATION
DIVISION OF FACILITIES
MANAGEMENT / DESIGN
AND CONSTRUCTION
DEPARTMENT OF
LABOR & INDUSTRIAL
RELATIONS

CARPETING AND PAINTING

KANSAS CITY DOLIR
OFFICE BUILDING
1410 GENESSEE
KANSAS CITY, MO

PROJECT # O243401
SITE # 1018
FACILITY # 3101018001

REVISION: _____
DATE: _____
REVISION: _____
DATE: _____
REVISION: _____
DATE: _____
ISSUE DATE: 9/27/2024

CAD DWG FILE: O243401
DRAWN BY: Kirkwj
CHECKED BY: BMS
DESIGNED BY: BMS

SHEET TITLE:
**1st FLOOR PHASES
& ROOM SCHEDULE**

SHEET NUMBER:

I-101

3 OF 11 SHEETS
09/27/2024



Brad M. Schaefer - Architect
MO# A-200902794

OFFICE OF
ADMINISTRATION
DIVISION OF FACILITIES
MANAGEMENT / DESIGN
AND CONSTRUCTION
DEPARTMENT OF
LABOR & INDUSTRIAL
RELATIONS

CARPETING AND PAINTING

KANSAS CITY DOLIR
OFFICE BUILDING
1410 GENESSEE
KANSAS CITY, MO

PROJECT # O243401
SITE # 1018
FACILITY # 3101018001

REVISION: _____
DATE: _____
REVISION: _____
DATE: _____
REVISION: _____
DATE: _____
ISSUE DATE: 9/27/2024

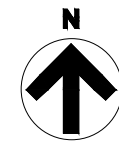
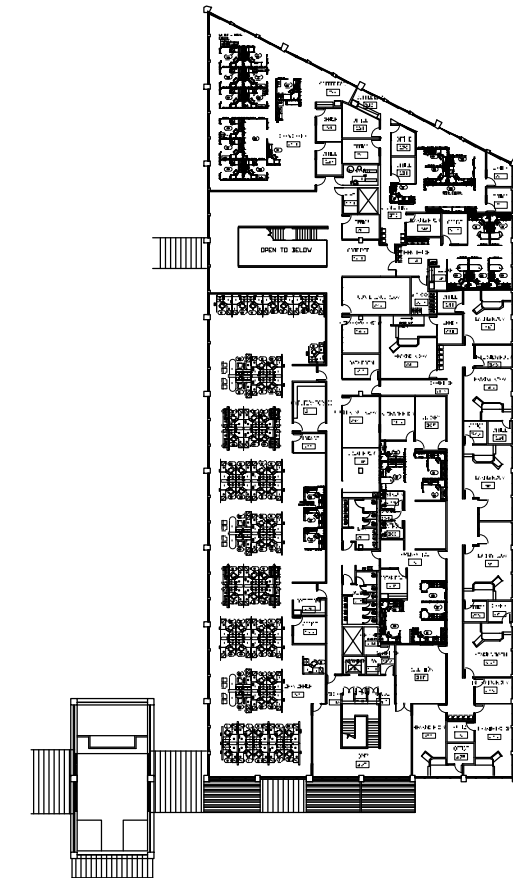
CAD DWG FILE: O243401
DRAWN BY: Kirkwj
CHECKED BY: BMS
DESIGNED BY: BMS

SHEET TITLE:
2nd FLOOR PHASES
& ROOM SCHEDULE

SHEET NUMBER:

I-102

4 OF 11 SHEETS
09/27/2024



KEY PLAN
KANSAS CITY DOLIR OFFICE BUILDING - 2nd FLOOR

ROOM FINISH SCHEDULE - 2nd FLOOR

PHASE	NUMBER	ROOM NAME	PERIMETER	AREA	PAINT	FLOORING	WALL BASE	FINISH	NOTES
Phase 08	217	COMPUTER STORAGE	63'-9"	241 Sq.Ft.	(1)	(3)	(4)	(4)	--
	220	OPEN OFFICE	563'-3"	7708 Sq.Ft.	(1),(2)	(3)	(4)	(4)	--
	225	OFFICE	45'-9"	130 Sq.Ft.	(1)	(3)	(4)	(4)	--
	226	COFFEE BAR	36'-9"	78 Sq.Ft.	(1),(2)	N/A	(4)	(4)	--
Phase 09	227	OFFICE	45'-3"	125 Sq.Ft.	(1)	(3)	(4)	(4)	--
	228	OFFICE	45'-3"	125 Sq.Ft.	(1)	(3)	(4)	(4)	--
	229	COFFEE BAR	57'-6"	168 Sq.Ft.	(1),(2)	N/A	(4)	(4)	--
	290	OPEN OFFICE	209'-10"	2442 Sq.Ft.	(1),(2)	(3)	(4)	(4)	--
Phase 10	221	OFFICE	51'-3"	150 Sq.Ft.	(1)	(3)	(4)	(4)	--
	222	COFFEE BAR	40'-11"	93 Sq.Ft.	(1),(2)	N/A	(4)	(4)	--
	223	OFFICE	47'-4"	134 Sq.Ft.	(1)	(3)	(4)	(4)	--
	230	OFFICE	41'-3"	107 Sq.Ft.	(1)	(3)	(4)	(4)	--
	231	OFFICE	39'-8"	98 Sq.Ft.	(1)	(3)	(4)	(4)	--
	232	OFFICE	43'-6"	111 Sq.Ft.	(1)	(3)	(4)	(4)	--
	233	OFFICE	39'-4"	95 Sq.Ft.	(1)	(3)	(4)	(4)	--
Phase 11	235	HEARING ROOM	44'-7"	120 Sq.Ft.	(1)	(3)	(4)	(4)	--
	270	OPEN OFFICE	246'-2"	1284 Sq.Ft.	(1),(2)	(3)	(4)	(4)	--
	237	OFFICE	43'-8"	118 Sq.Ft.	(1)	(3)	(4)	(4)	--
	238	COFFEE BAR	32'-11"	65 Sq.Ft.	(1),(2)	N/A	(4)	(4)	--
Phase 12	239	STORAGE	49'-3"	128 Sq.Ft.	(1)	(3)	(4)	(4)	--
	260	OPEN OFFICE	174'-8"	892 Sq.Ft.	(1),(2)	(3)	(4)	(4)	--
	300	OFFICE	300'-6"	1204 Sq.Ft.	(1)	(3)	(4)	(4)	--
	209	CORRIDOR	395'-10"	1307 Sq.Ft.	(1),(2)	(3)	(4)	(4)	--
	217	RECEPTION	86'-4"	455 Sq.Ft.	(1),(2)	(3)	(4)	(4)	--
	224	OFFICE	36'-3"	82 Sq.Ft.	(1)	(3)	(4)	(4)	--
	240	HEARING ROOM	172'-11"	525 Sq.Ft.	(1)	(3)	(4)	(4)	--
	241	OFFICE	43'-0"	115 Sq.Ft.	(1)	(3)	(4)	(4)	--
	242	HEARING ROOM	119'-7"	384 Sq.Ft.	(1)	(3)	(4)	(4)	--
	243	OFFICE	37'-3"	86 Sq.Ft.	(1)	(3)	(4)	(4)	--
	245	HEARING ROOM	118'-4"	377 Sq.Ft.	(1)	(3)	(4)	(4)	--
	248	OFFICE	35'-10"	80 Sq.Ft.	(1)	(3)	(4)	(4)	--
	249	INTERVIEW ROOM	46'-1"	124 Sq.Ft.	(1),(2)	(3)	(4)	(4)	--
	Phase 13	250	HEARING ROOM	136'-11"	496 Sq.Ft.	(1)	(3)	(4)	(4)
251		HEARING ROOM	139'-2"	512 Sq.Ft.	(1)	(3)	(4)	(4)	--
252		OFFICE	34'-9"	75 Sq.Ft.	(1)	(3)	(4)	(4)	--
253		HEARING ROOM	119'-4"	386 Sq.Ft.	(1)	(3)	(4)	(4)	--
254		OFFICE	35'-2"	77 Sq.Ft.	(1)	(3)	(4)	(4)	--
255		INTERVIEW ROOM	49'-0"	144 Sq.Ft.	(1),(2)	(3)	(4)	(4)	--
256		HEARING ROOM	125'-9"	420 Sq.Ft.	(1)	(3)	(4)	(4)	--
257		OFFICE	36'-10"	83 Sq.Ft.	(1)	(3)	(4)	(4)	--
258		OFFICE	36'-10"	83 Sq.Ft.	(1)	(3)	(4)	(4)	--
259		HEARING ROOM	124'-10"	393 Sq.Ft.	(1)	(3)	(4)	(4)	--
Phase 14	261	OPEN OFFICE	318'-6"	1687 Sq.Ft.	(1)	(3)	(4)	(4)	--
	262	BREAK ROOM	44'-0"	121 Sq.Ft.	(1)	N/A	(4)	(4)	--
	263	RESTROOM	32'-3"	64 Sq.Ft.	(1)	N/A	(4)	(4)	--
	264	STORAGE	15'-9"	15 Sq.Ft.	(1)	(3)	(4)	(4)	--
	265	RESTROOM	32'-3"	64 Sq.Ft.	(1)	N/A	(4)	(4)	--
	266	STORAGE ROOM	61'-0"	229 Sq.Ft.	(1)	(3)	(4)	(4)	--
	267	LIBRARY	66'-1"	252 Sq.Ft.	(1)	(3)	(4)	(4)	--
200	LOBBY	230'-5"	1086 Sq.Ft.	(1),(2)	(3)	(4)	(4)	--	
201A	CLOSET	14'-4"	12 Sq.Ft.	(1)	(3)	(4)	(4)	--	
201B	CLOSET	13'-8"	11 Sq.Ft.	(1)	(3)	(4)	(4)	--	
201C	CLOSET	14'-4"	12 Sq.Ft.	(1)	(3)	(4)	(4)	--	
202	CORRIDOR	34'-7"	65 Sq.Ft.	(1)	(3)	(4)	(4)	--	
206	CORRIDOR	738'-10"	3008 Sq.Ft.	(1),(2)	(3)	(4)	(4)	--	
208	BREAK ROOM	73'-7"	270 Sq.Ft.	(1),(2)	N/A	(4)	(4)	--	
244	CONFERENCE ROOM	88'-1"	282 Sq.Ft.	(1),(2)	N/A	(4)	(4)	--	
246	CONFERENCE ROOM	60'-3"	205 Sq.Ft.	(1),(2)	(3)	(4)	(4)	--	
247	CONFERENCE ROOM	81'-6"	382 Sq.Ft.	(1),(2)	(3)	(4)	(4)	--	
280	OFFICE	48'-2"	134 Sq.Ft.	(1)	(3)	(4)	(4)	--	
			1377'-9"	5446 Sq.Ft.					
			5878'-5"	28586 Sq.Ft.					

- BASE WALL PAINT COLOR: SHERWIN WILLIAMS, EG-SHEL, SW 7555, PATIENCE
CEILING PAINT COLOR: SHERWIN WILLIAMS, EG-SHEL, SW7005, PURE WHITE
- ACCENT WALL PAINT COLOR: SHERWIN WILLIAMS, EG-SHEL, SW6528 COSMOS. PAINT WALL BETWEEN ARROWS SHOWN ON ENLARGED PLANS
- MOHAWK GROUP, STYLE: FIRST ONE UP II BR443, COLOR: 959 PREFERENCE, 24"x24"
OWNER TO SUPPLY CARPET - N.I.C.
- JOHNSONITE TRADITIONAL VINYL 4" TOELESS COVE WALL BASE, COLOR: "CHARCOAL WG"
- VINYL STAIR TREAD AND LANDINGS TO BE REPLACED.
MANUFACTURER: NORAMENT ROUND STAIR TREAD AND FLOOR TILE, COLOR 0749 STONE GREY.
- WALK-OFF CARPET
MOHAWK GROUP-TUFF STUFF II COLLECTION, STYLE: FIRST STEP II GT315, COLOR: 955 COBALT,
24"x24". OWNER TO SUPPLY CARPET - N.I.C.

CARPET RENOVATION NOTES:

- ALL ELECTRICAL AND DATA FLOOR OUTLETS SHALL BE RETAINED AND ACCOUNTED FOR IN NEW CARPET INSTALLATION.
- INSTALL NEW CARPET TILES PROVIDED BY OWNER. MOHAWK 24" X 24" CARPET TILE, WITH ADHESIVE GLUE PROVIDED BY OWNER IN A 1/4 TURN PATTERN. CARPET TILE INSTALLATION SHALL BE IN ACCORDANCE WITH MANUFACTURERS INSTRUCTIONS AND BEST PRACTICE. INSTALLATION SHALL RESULT IN A CONTINUOUS AND COHESIVE FINISHED PRODUCT WITH NO TRANSITIONS UNLESS OTHERWISE NOTED. ALL PHASES SHALL STOP AT NEAREST FULL TILE RUN TO ACCEPT THE NEXT PHASES LAY DOWN IN A CONTINUOUS MANNER.
- ALL CUBICAL CONFIGURATIONS, SHELVES, FILES, AND NON PERSONAL FURNITURE SHALL REMAIN IN THE SUITE FOR THE DURATION OF THE PROJECT.
- CONTRACTOR SHALL MOVE OR LIFT AND REPLACE ALL FURNITURE ITEMS PER PHASE. SOME FREE STANDING FURNITURE MAY NOT BE SHOWN ON DRAWINGS.
- CUBICAL STRUCTURES ARE TO BE LIFTED IN PLACE OR SLID INTACT SO AS NOT TO FULLY DISASSEMBLE OFFICE SPACE LAYOUTS. CUBICLE STRUCTURES TO BE PLACED BACK INTO ORIGINAL LOCATION.
- CUBICLES AND OFFICE SPACES WILL BE EMPTIED OF ALL PERSONAL AND TECHNOLOGY ITEMS BY OWNER.

PAINT RENOVATION NOTES:

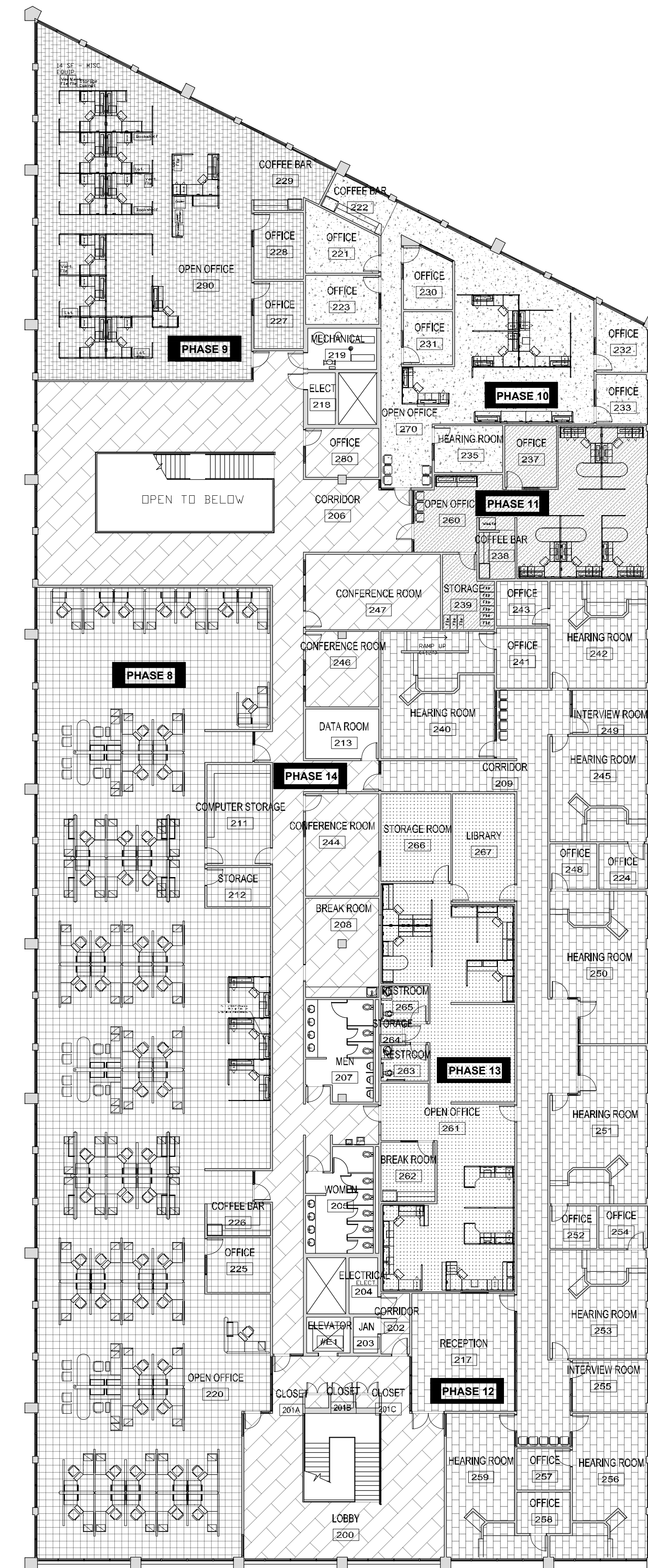
- REMOVE ALL EXISTING VINYL COVE WALL BASE AND DISPOSE.
- ALL WALLS TO BE REPAIRED AND PREPARED TO A LEVEL 4 FINISH OR GREATER PRIOR TO ANY FINISH BEING APPLIED TO SURFACES.
- VERIFY ALL PAINT COLOR DESIGNATIONS ON THIS SHEET PRIOR TO EACH PHASE WITH OWNER'S CONSTRUCTION MANAGER.
- PAINT TO BE SUPPLIED AND APPLIED BY CONTRACTOR. ALL WALLS TO BE PAINTED BASE COLOR UNLESS SPECIFIED TO BE PAINTED ACCENT COLOR.
- PROTECT ALL NEWLY PAINTED WALLS THROUGHOUT CONSTRUCTION FROM DAMAGE. TOUCH UP ALL FINISHED SURFACES AS NEEDED.

AREA OF WORK KEY:

- NO WORK REQUIRED - (NOT IN CONTRACT)
- AREA OF WORK - PHASE 8
- AREA OF WORK - PHASE 9
- AREA OF WORK - PHASE 10
- AREA OF WORK - PHASE 11
- AREA OF WORK - PHASE 12
- AREA OF WORK - PHASE 13
- AREA OF WORK - PHASE 14

GENERAL NOTES:

- ALL DIMENSIONS RELATIVE TO EXISTING CONDITIONS ARE APPROXIMATE AND MAY VARY. CONTRACTOR SHALL VERIFY ALL DIMENSIONS AND EXISTING CONDITIONS. MINOR DIFFERENCES BETWEEN WHAT IS SHOWN AND THE ACTUAL DIMENSIONS WILL NOT BE CONSIDERED THE BASIS FOR AN EXTRA OR CREDIT.
- CUBICAL CONFIGURATIONS ARE SUBJECT TO CHANGE AND SHOULD BE VERIFIED BEFORE THE START OF EACH PHASE.
- PROTECT ALL FIXED EQUIPMENT, FURNITURE AND FINISHES DURING CONSTRUCTION.
- DURING WORK AND ANY DAMAGE INCURRED SHALL BE REPAIRED AND REPAINTED BY CONTRACTOR.
- CONTRACTOR TO FIELD VERIFY ALL IN FLOOR DATA AND ELECTRICAL POINTS PRIOR TO EACH PHASE. LOCATIONS AND ACCESS TO BE MAINTAINED DURING INSTALLATION.
- CONTRACTOR TO RECYCLE ALL CARDBOARD PACKAGING REFUSE OFF SITE.
- CONTRACTOR TO DISPOSE OF TRASH AND DEBRIS OFF SITE ON A DAILY BASIS.
- PATHWAYS, ELEVATORS, LOADING DOCKS AND ANY BUILDING CARTS, CORRIDORS OR STORAGE AREAS USED BY THE CONTRACTOR SHALL BE PROTECTED AND KEEP FREE FROM DEFECT.
- CONTRACTOR TO USE NOTED ENTRANCES TO WORKSPACE.
- DOORS ARE TO BE KEPT SECURE AND LOCKED. DO NOT PROP OPEN DOORS IN ANY AREA OF THE FACILITY.
- TECHNICAL ITEMS SUCH AS BUT NOT LIMITED TO WHITEBOARDS, DIGITAL DISPLAYS AND MEDIA INSTALLATIONS ARE TO BE REMOVED AND REPLACED BY THE OWNER AND COORDINATED WITH THE CONSTRUCTION ADMINISTRATOR.
- CONTRACTOR TO TRANSPORT OWNER SUPPLIED CARPET TILES FROM 615 E. 13TH STREET DOCK LOCATION TO PROJECT LOCATION AS NEEDED PER PHASE OF CONSTRUCTION. MATERIALS TO BE STORED ON-SITE IN CONTRACTOR SUPPLIED CONEX STORAGE CONTAINER.



1

KANSAS CITY DOLIR OFFICE BUILDING - 2nd FLOOR
1/16" = 1'-0"
FLOORING REPLACEMENT - PHASES 8-14



Brad M. Schaefer - Architect
MO# A-2009027294

OFFICE OF
ADMINISTRATION
DIVISION OF FACILITIES
MANAGEMENT / DESIGN
AND CONSTRUCTION
DEPARTMENT OF
LABOR & INDUSTRIAL
RELATIONS

CARPETING AND PAINTING

KANSAS CITY DOLIR
OFFICE BUILDING
1410 GENESSEE
KANSAS CITY, MO

PROJECT # O243401
SITE # 1018
FACILITY # 3101018001

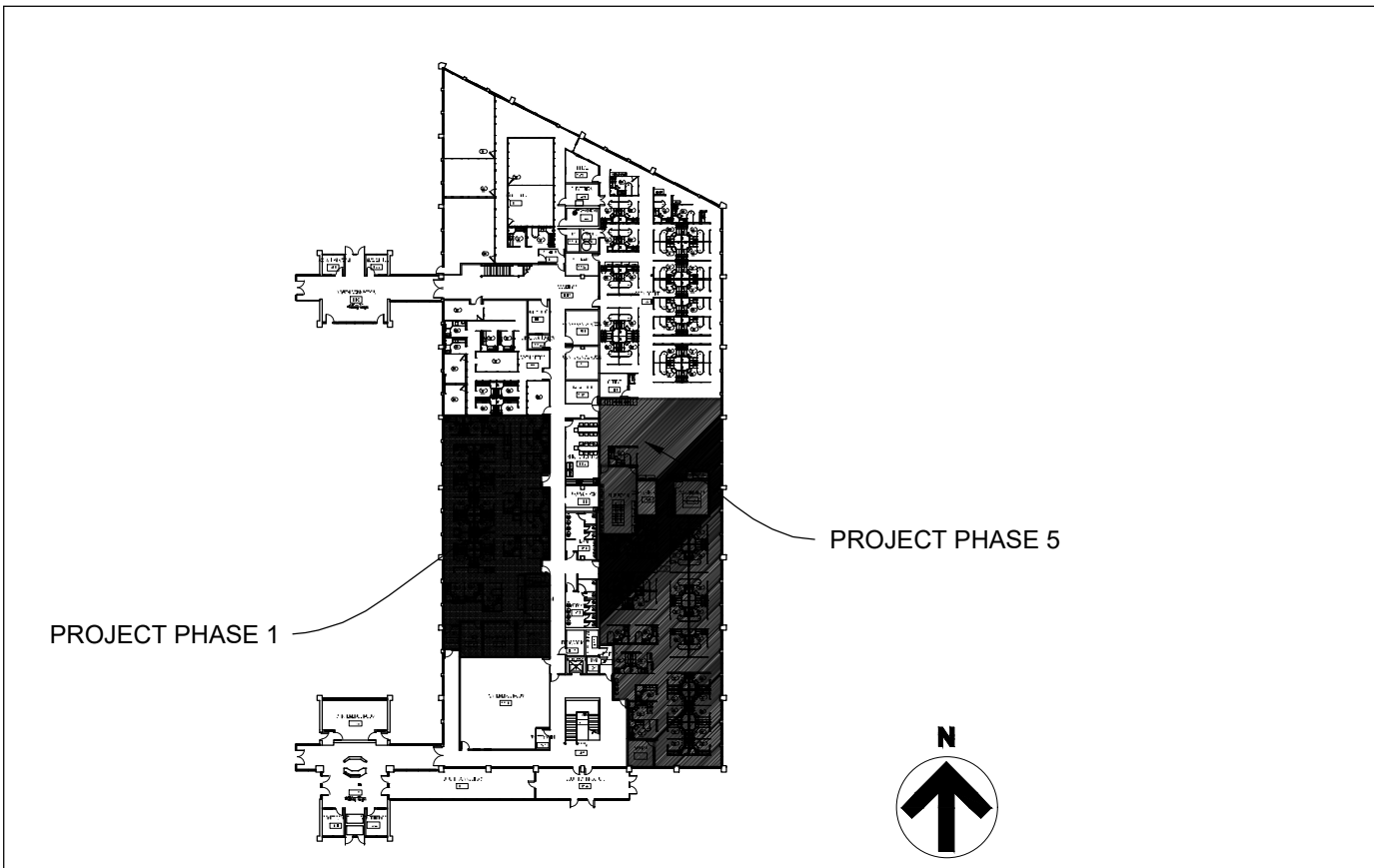
REVISION:
DATE: _____
REVISION:
DATE: _____
REVISION:
DATE: _____
ISSUE DATE: 9/27/2024

CAD DWG FILE: 0019-05204-A-FP-01
DRAWN BY: Kirkwj
CHECKED BY: BMS
DESIGNED BY: BMS

SHEET TITLE:
ENLARGED PLAN,
PHASE 1 & 5
ROOM SCHEDULE

SHEET NUMBER:

I-401
5 OF 11 SHEETS
09/27/2024



KEY PLAN
KANSAS CITY DOLIR OFFICE BUILDING - 1st Floor
PHASE 1 & 5

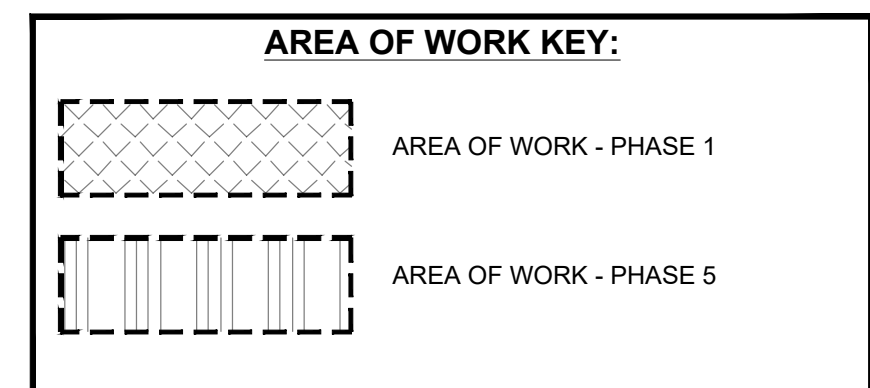
PHASE 1 - ROOM FINISH SCHEDULE								
PHASE	NUMBER	ROOM NAME	PERIMETER	AREA	PAINT	FLOORING	FINISH WALL BASE	NOTES
Phase 1	115	COFFEE BAR	29'-10"	48 Sq.Ft.	(1),(2)	N/A	(4)	--
	120	CORRIDOR	33'-8"	64 Sq.Ft.	(1),(2)	(3)	(4)	--
	128	OFFICE	57'-2"	204 Sq.Ft.	(1)	(3)	(4)	--
	129	OPEN OFFICE	279'-2"	3708 Sq.Ft.	(1),(2)	(3)	(4)	--
	131	OFFICE	47'-11"	136 Sq.Ft.	(1)	(3)	(4)	--
	132	CONFERENCE ROOM	57'-1"	204 Sq.Ft.	(1),(2)	(3)	(4)	--
138	STORAGE ROOM	49'-9"	149 Sq.Ft.	(1)	(3)	(4)	--	
			554'-11"	4513 Sq.Ft.				

PHASE 5 - ROOM FINISH SCHEDULE								
PHASE	NUMBER	ROOM NAME	PERIMETER	AREA	PAINT	FLOORING	FINISH WALL BASE	NOTES
Phase 5	136	OPEN OFFICE	256'-3"	6613 Sq.Ft.	(1)	(3)	(4)	--
	139	COPY / STORAGE	45'-0"	115 Sq.Ft.	(1)	(3)	(4)	--
	140	CONFERENCE	58'-6"	214 Sq.Ft.	(1)	(3)	(4)	--
	141	OFFICE	44'-8"	124 Sq.Ft.	(1)	(3)	(4)	--
	142	FILE ROOM	88'-6"	447 Sq.Ft.	(1)	(3)	(4)	--
144	COFFEE BAR	26'-3"	34 Sq.Ft.	(1)	N/A	(4)	--	
			819'-2"	7546 Sq.Ft.				

- BASE WALL PAINT COLOR: SHERWIN WILLIAMS, EG-SHEL, SW 7555, PATIENCE
CEILING PAINT COLOR: SHERWIN WILLIAMS, EG-SHEL, SW7005, PURE WHITE
- ACCENT WALL PAINT COLOR: SHERWIN WILLIAMS, EG-SHEL, SW6528 COSMOS. PAINT WALL BETWEEN ARROWS SHOWN ON ENLARGED PLANS
- MOHAWK GROUP, STYLE: FIRST ONE UP II BR443, COLOR: 959 PREFERENCE, 24"x24" OWNER TO SUPPLY CARPET - N.I.C.
- JOHNSONITE TRADITIONAL VINYL 4" TOELESS COVE WALL BASE, COLOR: "CHARCOAL WG"
- VINYL STAIR TREAD AND LANDINGS TO BE REPLACED.
MANUFACTURER: NORAMENT ROUND STAIR TREAD AND FLOOR TILE, COLOR 0749 STONE GREY.
- WALK-OFF CARPET.
MOHAWK GROUP-TUFF STUFF II COLLECTION, STYLE: FIRST STEP II GT315, COLOR: 955 COBALT, 24"x24". OWNER TO SUPPLY CARPET - N.I.C.

- CARPET RENOVATION NOTES:**
- ALL ELECTRICAL AND DATA FLOOR OUTLETS SHALL BE RETAINED AND ACCOUNTED FOR IN NEW CARPET INSTALLATION.
 - INSTALL NEW CARPET TILES PROVIDED BY OWNER, MOHAWK 24" X 24" CARPET TILE, WITH ADHESIVE GLUE PROVIDED BY OWNER IN A 1/4 TURN PATTERN. CARPET TILE INSTALLATION SHALL BE IN ACCORDANCE WITH MANUFACTURERS INSTRUCTIONS AND BEST PRACTICE. INSTALLATION SHALL RESULT IN A CONTINUOUS AND COHESIVE FINISHED PRODUCT WITH NO TRANSITIONS UNLESS OTHERWISE NOTED. ALL PHASES SHALL STOP AT NEAREST FULL TILE RUN TO ACCEPT THE NEXT PHASES LAY DOWN IN A CONTINUOUS MANNER.
 - ALL CUBICAL CONFIGURATIONS, SHELVES, FILES, AND NON PERSONAL FURNITURE SHALL REMAIN IN THE SUITE FOR THE DURATION OF THE PROJECT.
 - CONTRACTOR SHALL MOVE OR LIFT AND REPLACE ALL FURNITURE ITEMS PER PHASE. SOME FREE STANDING FURNITURE MAY NOT BE SHOWN ON DRAWINGS.
 - CUBICAL STRUCTURES ARE TO BE LIFTED IN PLACE OR SLID INTACT SO AS NOT TO FULLY DISASSEMBLE OFFICE SPACE LAYOUTS. CUBICLE STRUCTURES TO BE PLACED BACK INTO ORIGINAL LOCATION.
 - CUBICLES AND OFFICE SPACES WILL BE EMPTIED OF ALL PERSONAL AND TECHNOLOGY ITEMS BY OWNER.

- PAINT RENOVATION NOTES:**
- REMOVE ALL EXISTING VINYL COVE WALL BASE AND DISPOSE. DEMOUNTABLE WALL TRIM TO REMAIN.
 - ALL WALLS TO BE REPAIRED AND PREPARED TO A LEVEL 4 FINISH OR GREATER PRIOR TO ANY FINISH BEING APPLIED TO SURFACES.
 - VERIFY ALL PAINT COLOR DESIGNATIONS ON THIS SHEET PRIOR TO EACH PHASE WITH OWNER/ CONSTRUCTION MANAGER.
 - PAINT TO BE SUPPLIED AND APPLIED BY CONTRACTOR. ALL WALLS TO BE PAINTED BASE COLOR UNLESS SPECIFIED TO BE PAINTED ACCENT COLOR.
 - PROTECT ALL NEWLY PAINTED WALLS THROUGHOUT CONSTRUCTION FROM DAMAGE. TOUCH UP ALL FINISHED SURFACES AS NEEDED.



- RENOVATION TAG NOTES:**
- CONFERENCE ROOM TO BE USED BY OWNER FOR STORAGE DURING PHASE RENOVATION. AFTER PHASE RENOVATION IS COMPLETED AND AGENCY REMOVES STORED ITEMS, CONTRACTOR TO COMPLETE RENOVATING CONFERENCE ROOM.
 - NEW TRANSITION STRIP REQUIRED AT THIS LOCATION.

- GENERAL NOTES:**
- ALL DIMENSIONS RELATIVE TO EXISTING CONDITIONS ARE APPROXIMATE AND MAY VARY. CONTRACTOR SHALL VERIFY ALL DIMENSIONS AND EXISTING CONDITIONS. MINOR DIFFERENCES BETWEEN WHAT IS SHOWN AND THE ACTUAL DIMENSIONS WILL NOT BE CONSIDERED THE BASIS FOR AN EXTRA OR CREDIT.
 - CUBICAL CONFIGURATIONS ARE SUBJECT TO CHANGE AND SHOULD BE VERIFIED BEFORE THE START OF EACH PHASE.
 - PROTECT ALL FIXED EQUIPMENT, FURNITURE AND FINISHES DURING CONSTRUCTION.
 - DURING WORK AND ANY DAMAGE INCURRED SHALL BE REPAIRED AND REPAINTED BY CONTRACTOR.
 - CONTRACTOR TO FIELD VERIFY ALL IN FLOOR DATA AND ELECTRICAL POINTS PRIOR TO EACH PHASE. LOCATIONS AND ACCESS TO BE MAINTAINED DURING INSTALLATION.
 - CONTRACTOR TO RECYCLE ALL CARDBOARD PACKAGING REFUSE OFF SITE.
 - CONTRACTOR TO DISPOSE OF TRASH AND DEBRIS OFF SITE ON A DAILY BASIS.
 - PATHWAYS, ELEVATORS, LOADING DOCKS AND ANY BUILDING CARTS, CORRIDORS OR STORAGE AREAS USED BY THE CONTRACTOR SHALL BE PROTECTED AND KEEP FREE FROM DEFECT.
 - CONTRACTOR TO USE NOTED ENTRANCES TO WORKSPACE.
 - DOORS ARE TO BE KEPT SECURE AND LOCKED. DO NOT PROP OPEN DOORS IN ANY AREA OF THE FACILITY.
 - TECHNICAL ITEMS SUCH AS BUT NOT LIMITED TO WHITEBOARDS, DIGITAL DISPLAYS AND MEDIA INSTALLATIONS ARE TO BE REMOVED AND REPLACED BY THE OWNER AND COORDINATED WITH THE CONSTRUCTION ADMINISTRATOR.
 - CONTRACTOR TO TRANSPORT OWNER SUPPLIED CARPET TILES FROM 615 E. 13TH STREET DOCK LOCATION TO PROJECT LOCATION AS NEEDED PER PHASE OF CONSTRUCTION. MATERIALS TO BE STORED ON-SITE IN CONTRACTOR SUPPLIED CONEX STORAGE CONTAINER.



1 ENLARGED PARTIAL PLAN - PHASE 1 & 5
1/8" = 1'-0"



Brad M. Schaefer - Architect
MO# A-2009027294

OFFICE OF
ADMINISTRATION
DIVISION OF FACILITIES
MANAGEMENT / DESIGN
AND CONSTRUCTION
DEPARTMENT OF
LABOR & INDUSTRIAL
RELATIONS

CARPETING AND PAINTING

KANSAS CITY DOLIR
OFFICE BUILDING
1410 GENESSEE
KANSAS CITY, MO

PROJECT # O243401
SITE # 0019
FACILITY # 05204

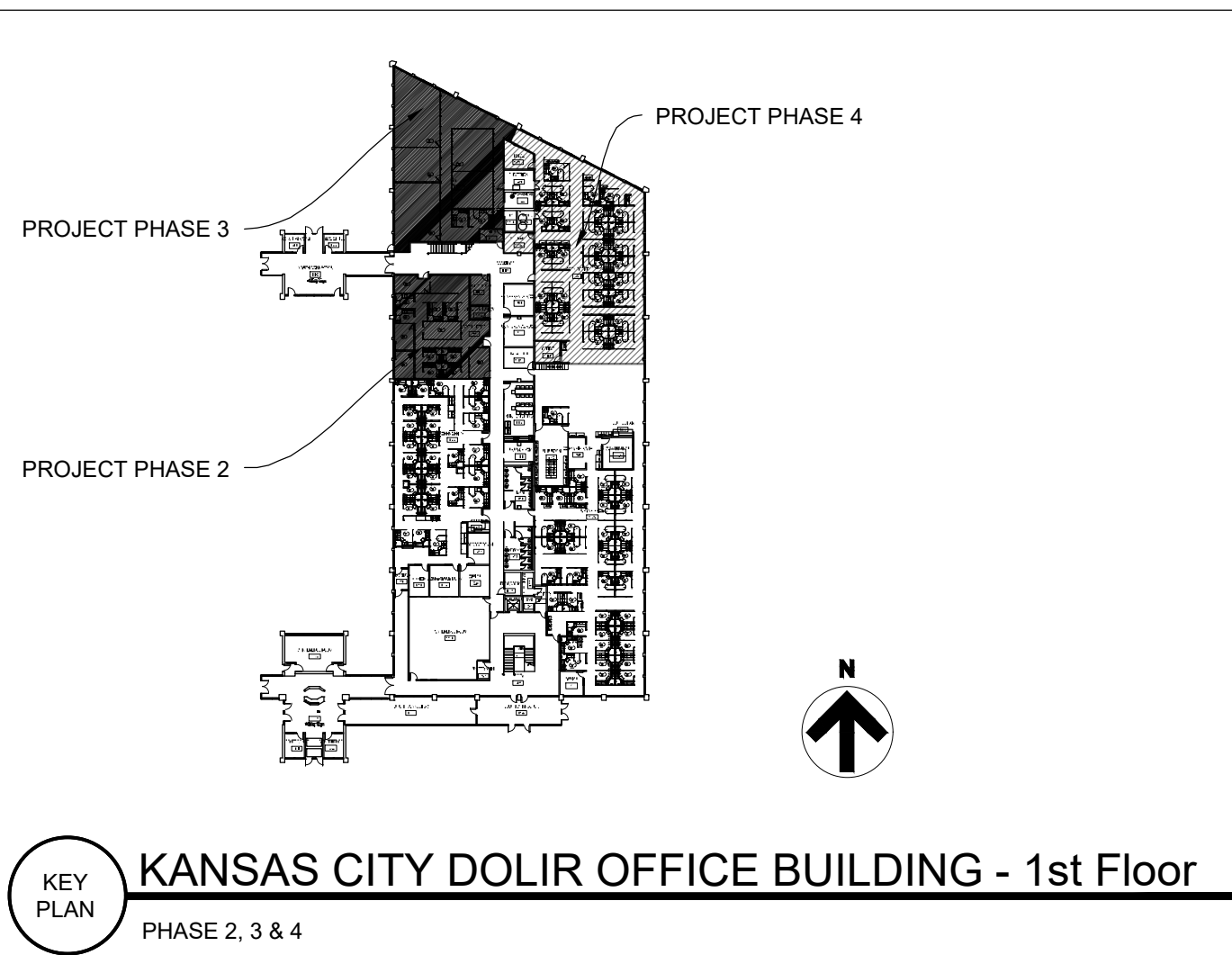
REVISION: _____
DATE: _____
REVISION: _____
DATE: _____
REVISION: _____
DATE: _____
ISSUE DATE: 9/27/2024

CAD DWG FILE: 0019-05204-A-FP-01
DRAWN BY: Kirkwj
CHECKED BY: BMS
DESIGNED BY: BMS

SHEET TITLE:
ENLARGE PLAN,
PHASE 2, 3 & 4
ROOM SCHEDULE

SHEET NUMBER:

I-402
6 OF 11 SHEETS
09/27/2024



PHASE 2 - ROOM FINISH SCHEDULE									
PHASE	NUMBER	ROOM NAME	PERIMETER	AREA	PAINT	FLOORING	WALL BASE	FINISH	NOTES
Phase 2	113	FAMILY ROOM	47'-4"	133 Sq.Ft.	(1),(2)	(3)	(4)	(4)	--
	114	OBSERVATION RM	30'-8"	57 Sq.Ft.	(1)	(3)	(4)	(4)	--
	160	OPEN OFFICE	199'-11"	1973 Sq.Ft.	(1),(2)	(3)	(4)	(4)	--
			277'-11"	2163 Sq.Ft.					

PHASE 3 - ROOM FINISH SCHEDULE									
PHASE	NUMBER	ROOM NAME	PERIMETER	AREA	PAINT	FLOORING	WALL BASE	FINISH	NOTES
Phase 3	127	OPEN OFFICE	273'-6"	3611 Sq.Ft.	(1),(2)	(3)	(4)	(4)	--
	170	VESTIBULE	34'-0"	66 Sq.Ft.	(1)	(3)	(4)	(4)	--
			307'-6"	3677 Sq.Ft.					

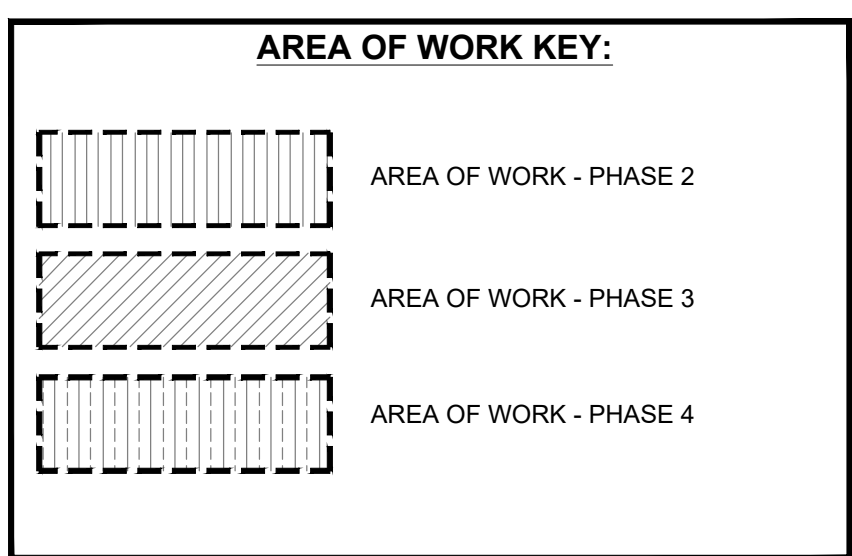
PHASE 4 - ROOM FINISH SCHEDULE									
PHASE	NUMBER	ROOM NAME	PERIMETER	AREA	PAINT	FLOORING	WALL BASE	FINISH	NOTES
Phase 4	119	STORAGE	48'-2"	134 Sq.Ft.	(1)	(3)	(4)	(4)	--
	125	OFFICE	51'-3"	150 Sq.Ft.	(1)	(3)	(4)	(4)	--
	137	OPEN OFFICE	334'-8"	4816 Sq.Ft.	(1),(2)	(3)	(4)	(4)	--
			434'-1"	5100 Sq.Ft.					

- (1) BASE WALL PAINT COLOR: SHERWIN WILLIAMS, EG-SHEL, SW 7555, PATIENCE
CEILING PAINT COLOR: SHERWIN WILLIAMS, EG-SHEL, SW7005, PURE WHITE
- (2) ACCENT WALL PAINT COLOR: SHERWIN-WILLIAMS, EG-SHEL, SW6528 COSMOS. PAINT WALL BETWEEN ARROWS SHOWN ON ENLARGED PLANS
- (3) MOHAWK GROUP, STYLE: FIRST ONE UP II BR443, COLOR: 999 PREFERENCE, 24"X24" OWNER TO SUPPLY CARPET - N.I.C.
- (4) JOHNSONITE TRADITIONAL VINYL 4" TOELESS COVE WALL BASE, COLOR: "CHARCOAL WG"
- (5) VINYL STAIR TREAD AND LANDINGS TO BE REPLACED.
MANUFACTURER: NORAMENT ROUND STAIR TREAD AND FLOOR TILE, COLOR 0749 STONE GREY.
- (6) WALK-OFF CARPET.
MOHAWK GROUP-TUFF STUFF II COLLECTION, STYLE: FIRST STEP II GT315, COLOR: 955 COBALT, 24"X24". OWNER TO SUPPLY CARPET - N.I.C.

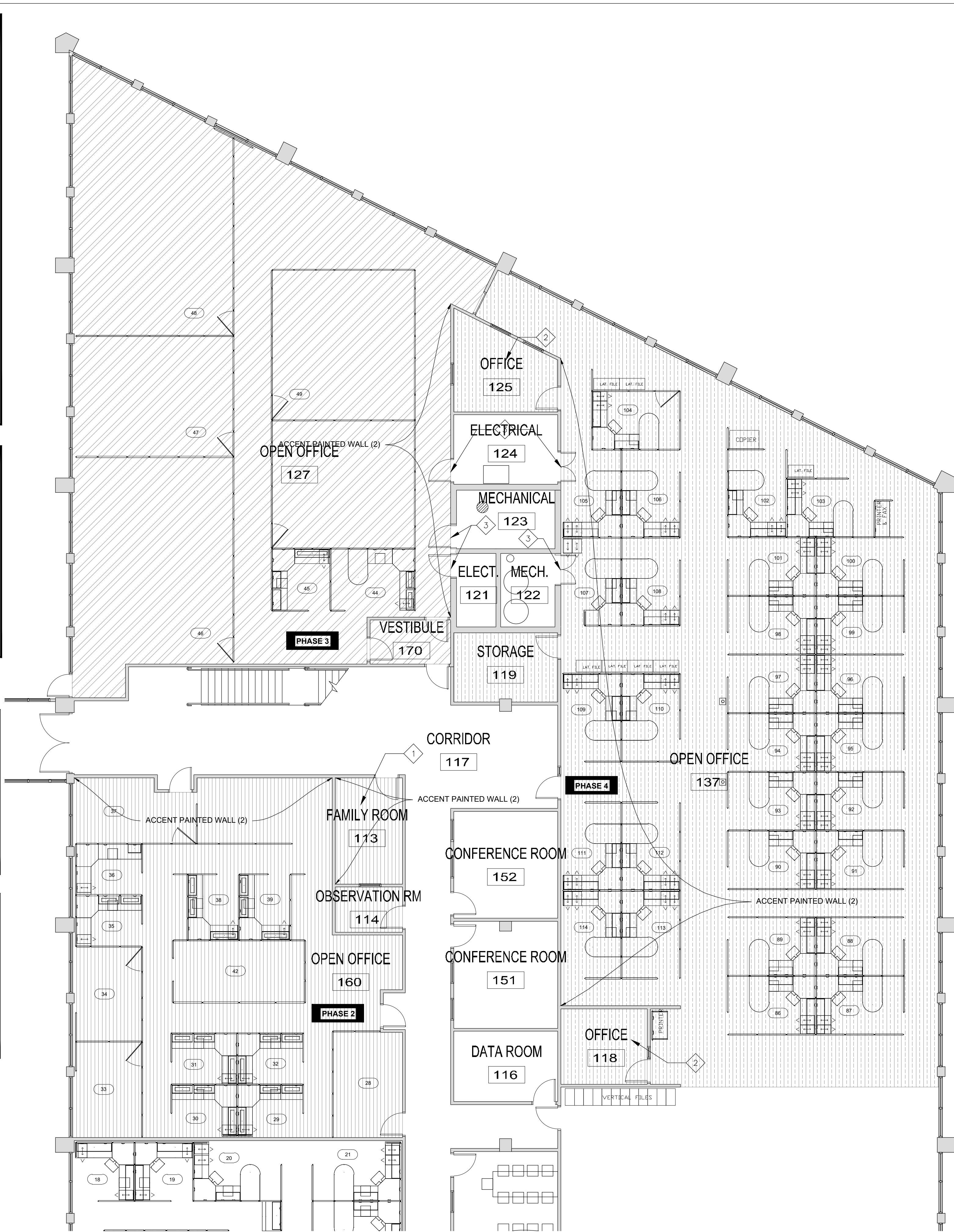
- GENERAL NOTES:**
- ALL DIMENSIONS RELATIVE TO EXISTING CONDITIONS ARE APPROXIMATE AND MAY VARY. CONTRACTOR SHALL VERIFY ALL DIMENSIONS AND EXISTING CONDITIONS. MINOR DIFFERENCES BETWEEN WHAT IS SHOWN AND THE ACTUAL DIMENSIONS WILL NOT BE CONSIDERED THE BASIS FOR AN EXTRA OR CREDIT.
 - CUBICAL CONFIGURATIONS ARE SUBJECT TO CHANGE AND SHOULD BE VERIFIED BEFORE THE START OF EACH PHASE.
 - PROTECT ALL FIXED EQUIPMENT, FURNITURE AND FINISHES DURING CONSTRUCTION.
 - DURING WORK AND ANY DAMAGE INCURRED SHALL BE REPAIRED AND REPAINTED BY CONTRACTOR.
 - CONTRACTOR TO FIELD VERIFY ALL IN FLOOR DATA AND ELECTRICAL POINTS PRIOR TO EACH PHASE. LOCATIONS AND ACCESS TO BE MAINTAINED DURING INSTALLATION.
 - CONTRACTOR TO RECYCLE ALL CARDBOARD PACKAGING REFUSE OFF SITE.
 - CONTRACTOR TO DISPOSE OF TRASH AND DEBRIS OFF SITE ON A DAILY BASIS.
 - PATHWAYS, ELEVATORS, LOADING DOCKS AND ANY BUILDING CARTS, CORRIDORS OR STORAGE AREAS USED BY THE CONTRACTOR SHALL BE PROTECTED AND KEEP FREE FROM DEFECT.
 - CONTRACTOR TO USE NOTED ENTRANCES TO WORKSPACE.
 - DOORS ARE TO BE KEPT SECURE AND LOCKED. DO NOT PROP OPEN DOORS IN ANY AREA OF THE FACILITY.
 - TECHNICAL ITEMS SUCH AS BUT NOT LIMITED TO WHITEBOARDS, DIGITAL DISPLAYS AND MEDIA INSTALLATIONS ARE TO BE REMOVED AND REPLACED BY THE OWNER AND COORDINATED WITH THE CONSTRUCTION ADMINISTRATOR.
 - CONTRACTOR TO TRANSPORT OWNER SUPPLIED CARPET TILES FROM 615 E. 13TH STREET DOCK LOCATION TO PROJECT LOCATION AS NEEDED PER PHASE OF CONSTRUCTION. MATERIALS TO BE STORED ON-SITE IN CONTRACTOR SUPPLIED CONEX STORAGE CONTAINER.

- CARPET RENOVATION NOTES:**
- ALL ELECTRICAL AND DATA FLOOR OUTLETS SHALL BE RETAINED AND ACCOUNTED FOR IN NEW CARPET INSTALLATION.
 - INSTALL NEW CARPET TILES PROVIDED BY OWNER. MOHAWK 24" X 24" CARPET TILE, WITH ADHESIVE GLUE PROVIDED BY OWNER IN A 1/4 TURN PATTERN. CARPET TILE INSTALLATION SHALL BE IN ACCORDANCE WITH MANUFACTURER'S INSTRUCTIONS AND BEST PRACTICE. INSTALLATION SHALL RESULT IN A CONTINUOUS AND COMESIVE FINISHED PRODUCT WITH NO TRANSITIONS UNLESS OTHERWISE NOTED. ALL PHASES SHALL STOP AT NEAREST FULL TILE RUN TO ACCEPT THE NEXT PHASES LAY DOWN IN A CONTINUOUS MANNER.
 - ALL CUBICAL CONFIGURATIONS, SHELVES, FILES, AND NON PERSONAL FURNITURE SHALL REMAIN IN THE SUITE FOR THE DURATION OF THE PROJECT.
 - CONTRACTOR SHALL MOVE OR LIFT AND REPLACE ALL FURNITURE ITEMS PER PHASE. SOME FREE STANDING FURNITURE MAY NOT BE SHOWN ON DRAWINGS.
 - CUBICAL STRUCTURES ARE TO BE LIFTED IN PLACE OR SLID INTACT SO AS NOT TO FULLY DISASSEMBLE OFFICE SPACE LAYOUTS. CUBICLE STRUCTURES TO BE PLACED BACK INTO ORIGINAL LOCATION.
 - CUBICLES AND OFFICE SPACES WILL BE EMPTIED OF ALL PERSONAL AND TECHNOLOGY ITEMS BY AGENCY.

- PAINT RENOVATION NOTES:**
- REMOVE ALL EXISTING VINYL COVE WALL BASE AND DISPOSE. DEMOUNTABLE WALL TRIM TO REMAIN.
 - ALL WALLS TO BE REPAIRED AND PREPARED TO A LEVEL 4 FINISH OR GREATER PRIOR TO ANY FINISH BEING APPLIED TO SURFACES.
 - VERIFY ALL PAINT COLOR DESIGNATIONS ON THIS SHEET PRIOR TO EACH PHASE WITH OWNER/ CONSTRUCTION MANAGER.
 - PAINT TO BE SUPPLIED AND APPLIED BY CONTRACTOR. ALL WALLS TO BE PAINTED BASE COLOR UNLESS SPECIFIED TO BE PAINTED ACCENT COLOR.
 - PROTECT ALL NEWLY PAINTED WALLS THROUGHOUT CONSTRUCTION FROM DAMAGE. TOUCH UP ALL FINISHED SURFACES AS NEEDED.



- RENOVATION TAG NOTES:**
- FAMILY ROOM TO BE USED BY AGENCY FOR STORAGE DURING PHASE RENOVATION. AFTER PHASE RENOVATION IS COMPLETED AND AGENCY REMOVES STORED ITEMS, CONTRACTOR TO COMPLETE RENOVATING CONFERENCE ROOM.
 - OFFICE TO BE USED BY AGENCY FOR STORAGE DURING PHASE RENOVATION. AFTER PHASE RENOVATION IS COMPLETED AND AGENCY REMOVES STORED ITEMS, CONTRACTOR TO COMPLETE RENOVATING OFFICE.
 - NEW TRANSITION STRIP REQUIRED AT THIS LOCATION.



1 ENLARGED PARTIAL PLAN - PHASE 2, 3 & 4
1/8" = 1'-0"



Brad M. Schaefer - Architect
MO# A-2009027294

OFFICE OF
ADMINISTRATION
DIVISION OF FACILITIES
MANAGEMENT / DESIGN
AND CONSTRUCTION
DEPARTMENT OF
LABOR & INDUSTRIAL
RELATIONS

CARPETING AND PAINTING

KANSAS CITY DOLIR
OFFICE BUILDING
1410 GENESSEE
KANSAS CITY, MO

PROJECT # O243401
SITE # 1018
FACILITY # 3101018001

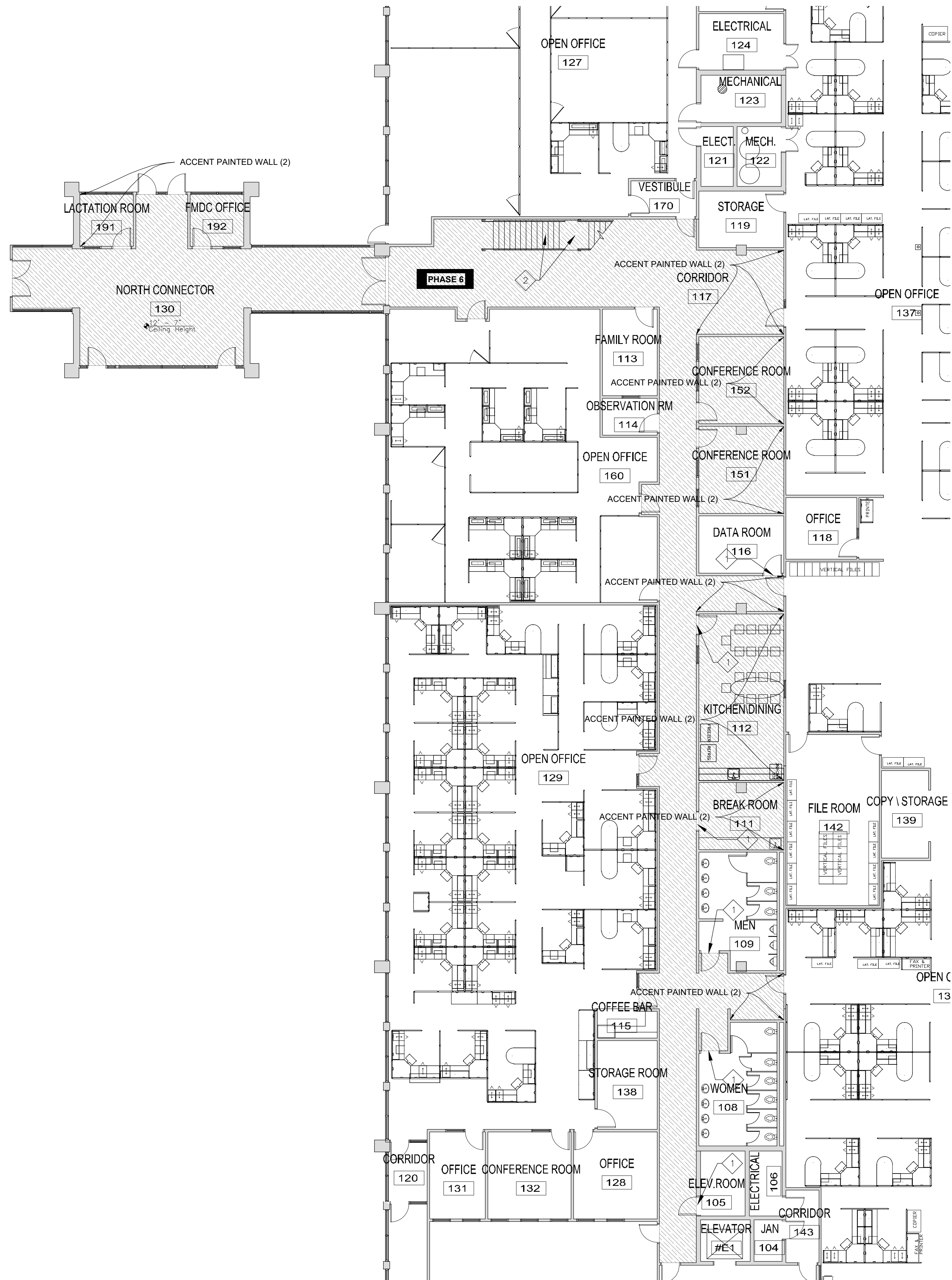
REVISION: _____
DATE: _____
REVISION: _____
DATE: _____
REVISION: _____
DATE: _____
ISSUE DATE: 9/27/2024

CAD DWG FILE: 0019-05204-A-EP-01
DRAWN BY: Kirkwj
CHECKED BY: BMS
DESIGNED BY: BMS

SHEET TITLE:
ENLARGED PLAN,
PHASE 6
ROOM SCHEDULE

SHEET NUMBER:

I-403
7 OF 11 SHEETS
09/27/2024



CARPET RENOVATION NOTES:

- ALL ELECTRICAL AND DATA FLOOR OUTLETS SHALL BE RETAINED AND ACCOUNTED FOR IN NEW CARPET INSTALLATION.
- INSTALL NEW CARPET TILES PROVIDED BY OWNER. MOHAWK 24" X 24" CARPET TILE, WITH ADHESIVE GLUE PROVIDED BY OWNER IN A 1/4 TURN PATTERN. CARPET TILE INSTALLATION SHALL BE IN ACCORDANCE WITH MANUFACTURES INSTRUCTIONS AND BEST PRACTICE. INSTALLATION SHALL RESULT IN A CONTINUOUS AND COHESIVE FINISHED PRODUCT WITH NO TRANSITIONS UNLESS OTHERWISE NOTED. ALL PHASES SHALL STOP AT NEAREST FULL TILE RUN TO ACCEPT THE NEXT PHASES LAY DOWN IN A CONTINUOUS MANNER.
- ALL CUBICAL CONFIGURATIONS, SHELVES, FILES, AND NON PERSONAL FURNITURE SHALL REMAIN IN THE SUITE FOR THE DURATION OF THE PROJECT.
- CONTRACTOR SHALL MOVE OR LIFT AND REPLACE ALL FURNITURE ITEMS PER PHASE. SOME FREE STANDING FURNITURE MAY NOT BE SHOWN ON DRAWINGS.
- CUBICAL STRUCTURES ARE TO BE LIFTED IN PLACE OR SLID INTACT SO AS NOT TO FULLY DISASSEMBLE OFFICE SPACE LAYOUTS. CUBICLE STRUCTURES TO BE PLACED BACK INTO ORIGINAL LOCATION.
- CUBICLES AND OFFICE SPACES WILL BE EMPTIED OF ALL PERSONAL AND TECHNOLOGY ITEMS BY OWNER.

PAINT RENOVATION NOTES:

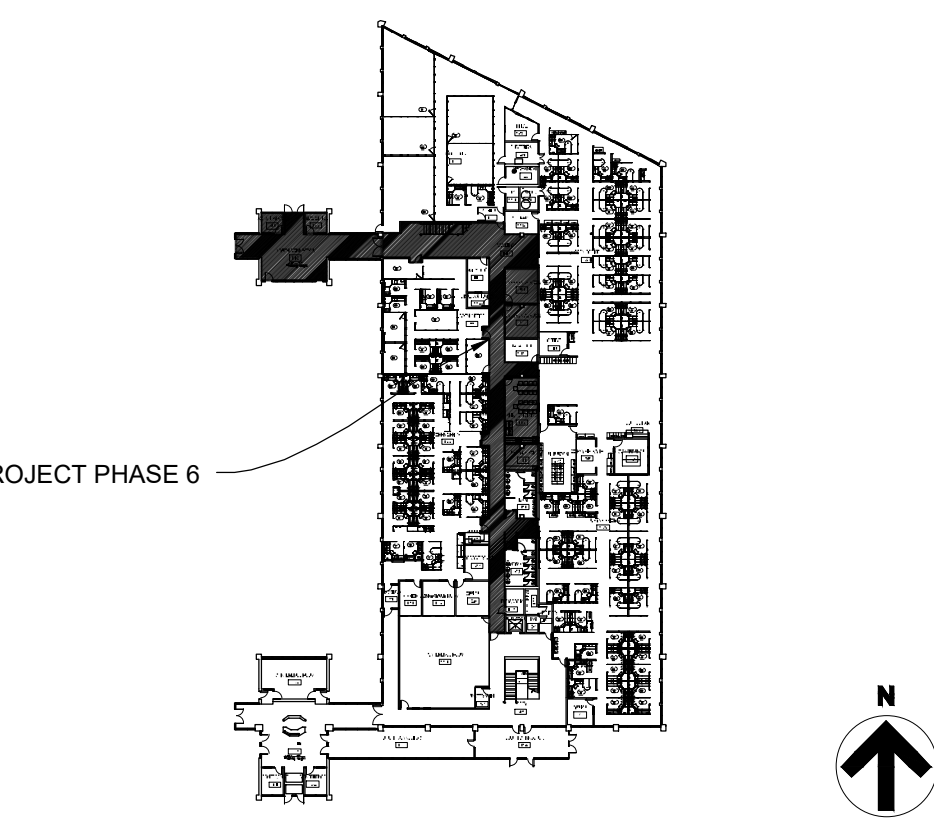
- REMOVE ALL EXISTING VINYL COVE WALL BASE AND DISPOSE. DEMOUNTABLE WALL TRIM TO REMAIN.
- ALL WALLS TO BE REPAIRED AND PREPARED TO A LEVEL 4 FINISH OR GREATER PRIOR TO ANY FINISH BEING APPLIED TO SURFACES.
- VERIFY ALL PAINT COLOR DESIGNATIONS ON THIS SHEET PRIOR TO EACH PHASE WITH OWNER/ CONSTRUCTION MANAGER.
- PAINT TO BE SUPPLIED AND APPLIED BY CONTRACTOR. ALL WALLS TO BE PAINTED BASE COLOR UNLESS SPECIFIED TO BE PAINTED ACCENT COLOR.
- PROTECT ALL NEWLY PAINTED WALLS THROUGHOUT CONSTRUCTION FROM DAMAGE. TOUCH UP ALL FINISHED SURFACES AS NEEDED.

AREA OF WORK KEY:



RENOVATION TAG NOTES:

- 1 NEW TRANSITION STRIP REQUIRED AT THIS LOCATION.
- 2 RUBBER STAIR TREADS AND FLOORING TO BE REMOVED AND REPLACED WITH NEW.



KANSAS CITY DOLIR OFFICE BUILDING - 1st Floor
PHASE 6

PHASE 6 - ROOM FINISH SCHEDULE

PHASE	NUMBER	ROOM		FINISH			NOTES	
		NAME	PERIMETER	AREA	PAINT	FLOORING		WALL BASE
Phase 6	111	BREAK ROOM	54'-3"	157 Sq.Ft.	(1)	N/A	(4)	---
	112	KITCHEN/DINING	84'-1"	395 Sq.Ft.	(1)	N/A	(4)	---
	117	CORRIDOR	592'-10"	2220 Sq.Ft.	(2)	(3),(15)	(4)	---
	130	NORTH CONNECTOR	183'-8"	976 Sq.Ft.	(1)	(3)	(4)	---
	151	CONFERENCE ROOM	60'-3"	205 Sq.Ft.	(1),(2)	(3)	(4)	---
	152	CONFERENCE ROOM	57'-7"	207 Sq.Ft.	(1),(2)	(3)	(4)	---
	191	LACTATION ROOM	35'-2"	77 Sq.Ft.	(1),(2)	(3)	(4)	---
	192	FMDC OFFICE	35'-2"	77 Sq.Ft.	(1)	(3)	(4)	---
			1103'-0"	4315 Sq.Ft.				

- BASE WALL PAINT COLOR: SHERWIN WILLIAMS, EG-SHEL, SW 7555, PATIENCE
CEILING PAINT COLOR: SHERWIN WILLIAMS, EG-SHEL, SW7005, PURE WHITE
- ACCENT WALL PAINT COLOR: SHERWIN WILLIAMS, EG-SHEL, SW6528 COSMOS. PAINT WALL BETWEEN ARROWS SHOWN ON ENLARGED PLANS
- MOHAWK GROUP, STYLE: FIRST ONE UP II BR443, COLOR: 959 PREFERENCE, 24"X24" OWNER TO SUPPLY CARPET - N.I.C.
- JOHNSONITE TRADITIONAL VINYL 4" TOELESS COVE WALL BASE, COLOR: "CHARCOAL WG"
- VINYL STAIR TREAD AND LANDINGS TO BE REPLACED.
MANUFACTURER: NORAMENT ROUND STAIR TREAD AND FLOOR TILE, COLOR 0749 STONE GREY.
- WALK-OFF CARPET.
MOHAWK GROUP-TUFF STUFF II COLLECTION, STYLE: FIRST STEP II GT315, COLOR: 955 COBALT, 24"X24". OWNER TO SUPPLY CARPET - N.I.C.

GENERAL NOTES:

- ALL DIMENSIONS RELATIVE TO EXISTING CONDITIONS ARE APPROXIMATE AND MAY VARY. CONTRACTOR SHALL VERIFY ALL DIMENSIONS AND EXISTING CONDITIONS. MINOR DIFFERENCES BETWEEN WHAT IS SHOWN AND THE ACTUAL DIMENSIONS WILL NOT BE CONSIDERED THE BASIS FOR AN EXTRA OR CREDIT.
- CUBICAL CONFIGURATIONS ARE SUBJECT TO CHANGE AND SHOULD BE VERIFIED BEFORE THE START OF EACH PHASE.
- PROTECT ALL FIXED EQUIPMENT, FURNITURE AND FINISHES DURING CONSTRUCTION.
- DURING WORK AND ANY DAMAGE INCURRED SHALL BE REPAIRED AND REPAINTED BY CONTRACTOR.
- CONTRACTOR TO FIELD VERIFY ALL IN FLOOR DATA AND ELECTRICAL POINTS PRIOR TO EACH PHASE. LOCATIONS AND ACCESS TO BE MAINTAINED DURING INSTALLATION.
- CONTRACTOR TO RECYCLE ALL CARDBOARD PACKAGING REFUSE OFF SITE.
- CONTRACTOR TO DISPOSE OF TRASH AND DEBRIS OFF SITE ON A DAILY BASIS.
- PATHWAYS, ELEVATORS, LOADING DOCKS AND ANY BUILDING CARTS, CORRIDORS OR STORAGE AREAS USED BY THE CONTRACTOR SHALL BE PROTECTED AND KEEP FREE FROM DEFECT.
- CONTRACTOR TO USE NOTED ENTRANCES TO WORKSPACE.
- DOORS ARE TO BE KEPT SECURE AND LOCKED. DO NOT PROP OPEN DOORS IN ANY AREA OF THE FACILITY.
- TECHNICAL ITEMS SUCH AS BUT NOT LIMITED TO WHITEBOARDS, DIGITAL DISPLAYS AND MEDIA INSTALLATIONS ARE TO BE REMOVED AND REPLACED BY THE OWNER AND COORDINATED WITH THE CONSTRUCTION ADMINISTRATOR.
- CONTRACTOR TO TRANSPORT OWNER SUPPLIED CARPET TILES FROM 615 E. 13TH STREET DOCK LOCATION TO PROJECT LOCATION AS NEEDED PER PHASE OF CONSTRUCTION. MATERIALS TO BE STORED ON-SITE IN CONTRACTOR SUPPLIED CONEX STORAGE CONTAINER.

1 ENLARGED PARTIAL PLAN - PHASE 6
3/32" = 1'-0"



Brad M. Schaefer - Architect
MO# A-2009027294

OFFICE OF
ADMINISTRATION
DIVISION OF FACILITIES
MANAGEMENT / DESIGN
AND CONSTRUCTION
DEPARTMENT OF
LABOR & INDUSTRIAL
RELATIONS

CARPETING AND PAINTING

KANSAS CITY DOLIR
OFFICE BUILDING
1410 GENESSEE
KANSAS CITY, MO

PROJECT # O243401
SITE # 1018
FACILITY # 3101018001

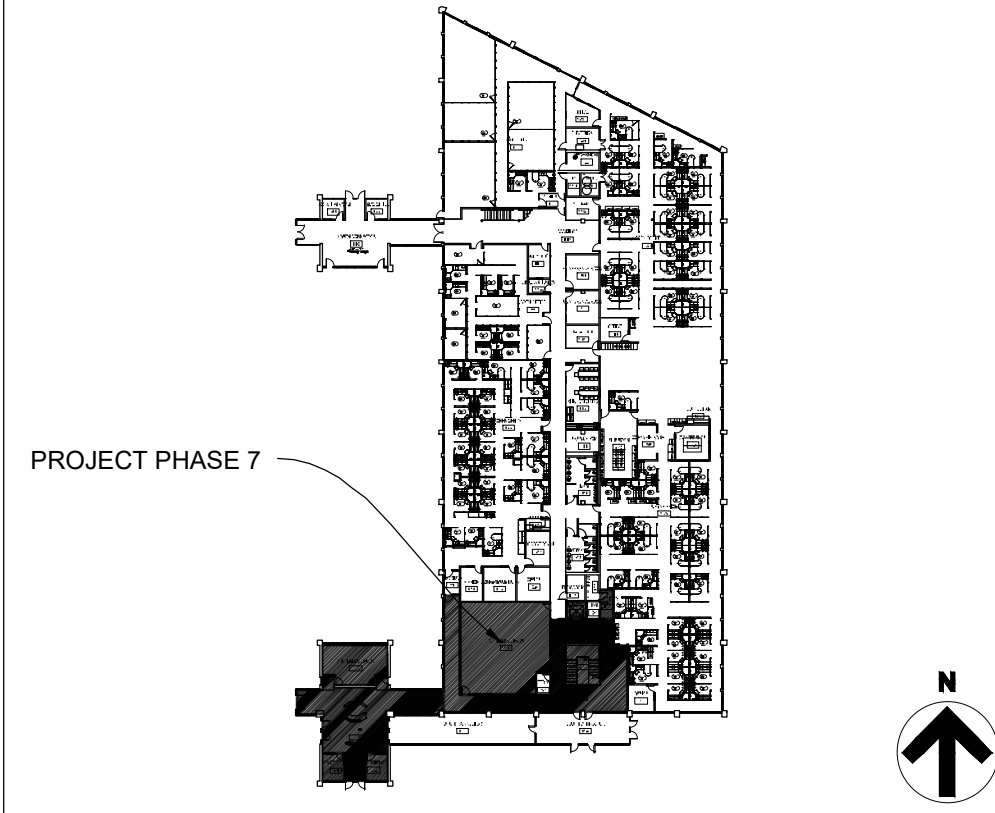
REVISION: _____
DATE: _____
REVISION: _____
DATE: _____
REVISION: _____
DATE: _____
ISSUE DATE: 9/27/2024

CAD DWG FILE: 0019-05204-A-EP-01
DRAWN BY: Kirkwj
CHECKED BY: BMS
DESIGNED BY: BMS

SHEET TITLE:
ENLARGED PLAN,
PHASE 7
ROOM SCHEDULE

SHEET NUMBER:

I-404
8 OF 11 SHEETS
09/27/2024



KEY PLAN
KANSAS CITY DOLIR OFFICE BUILDING - 1st Floor
PHASE 7

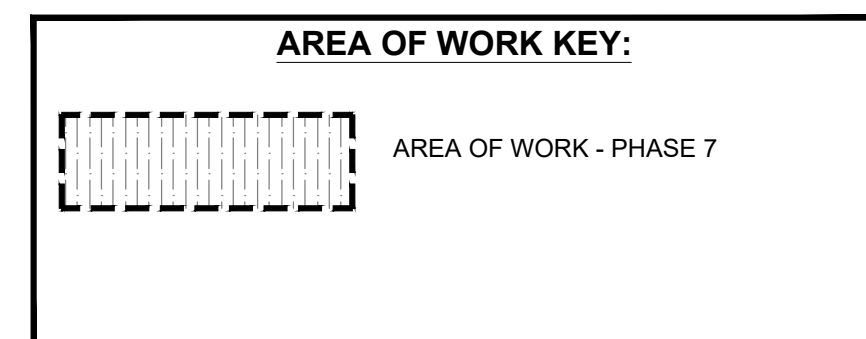
PHASE 7 - ROOM FINISH SCHEDULE									
PHASE	NUMBER	ROOM NAME	PERIMETER	AREA	PAINT	FLOORING	WALL BASE	FINISH	NOTES
Phase 7	#E1	ELEVATOR	30'-6"	58 Sq.Ft.	N/A	(6)	N/A	N/A	--
	#S1	STAIR	65'-8"	267 Sq.Ft.	N/A	(5)	N/A	N/A	--
	100	RECEPTION	237'-2"	1278 Sq.Ft.	(1)	(3),(6)	(4)	--	--
	101	CONFERENCE	41'-10"	107 Sq.Ft.	(1),(2)	(3)	(4)	--	--
	102	CONFERENCE	41'-10"	107 Sq.Ft.	(1),(2)	(3)	(4)	--	--
	103	CONFERENCE ROOM	88'-9"	420 Sq.Ft.	(1),(2)	(3)	(4)	--	--
	110	CONFERENCE ROOM	154'-1"	1429 Sq.Ft.	(1),(2)	(3)	(4)	--	--
	135	LOBBY	388'-11"	1549 Sq.Ft.	(1),(2)	(3)	(4)	--	--
	143	CORRIDOR	35'-5"	67 Sq.Ft.	(1)	(3)	(4)	--	--
			1078'-1"	5282 Sq.Ft.					

- (1) BASE WALL PAINT COLOR: SHERWIN WILLIAMS, EG-SHEL, SW 7555, PATIENCE
CEILING PAINT COLOR: SHERWIN WILLIAMS, EG-SHEL, SW7005, PURE WHITE
- (2) ACCENT WALL PAINT COLOR: SHERWIN WILLIAMS, EG-SHEL, SW6528 COSMOS. PAINT WALL BETWEEN ARROWS SHOWN ON ENLARGED PLANS
- (3) MOHAWK GROUP, STYLE: FIRST ONE UP II BR443, COLOR: 959 PREFERENCE, 24"X24" OWNER TO SUPPLY CARPET - N.I.C.
- (4) JOHNSONITE TRADITIONAL VINYL 4" TOELESS COVE WALL BASE, COLOR: "CHARCOAL WG"
- (5) VINYL STAIR TREAD AND LANDINGS TO BE REPLACED.
MANUFACTURER: NORAMENT ROUND STAIR TREAD AND FLOOR TILE, COLOR 0749 STONE GREY.
- (6) WALK-OFF CARPET.
MOHAWK GROUP-TUFF STUFF II COLLECTION, STYLE: FIRST STEP II GT315, COLOR: 955 COBALT, 24"X24". OWNER TO SUPPLY CARPET - N.I.C.

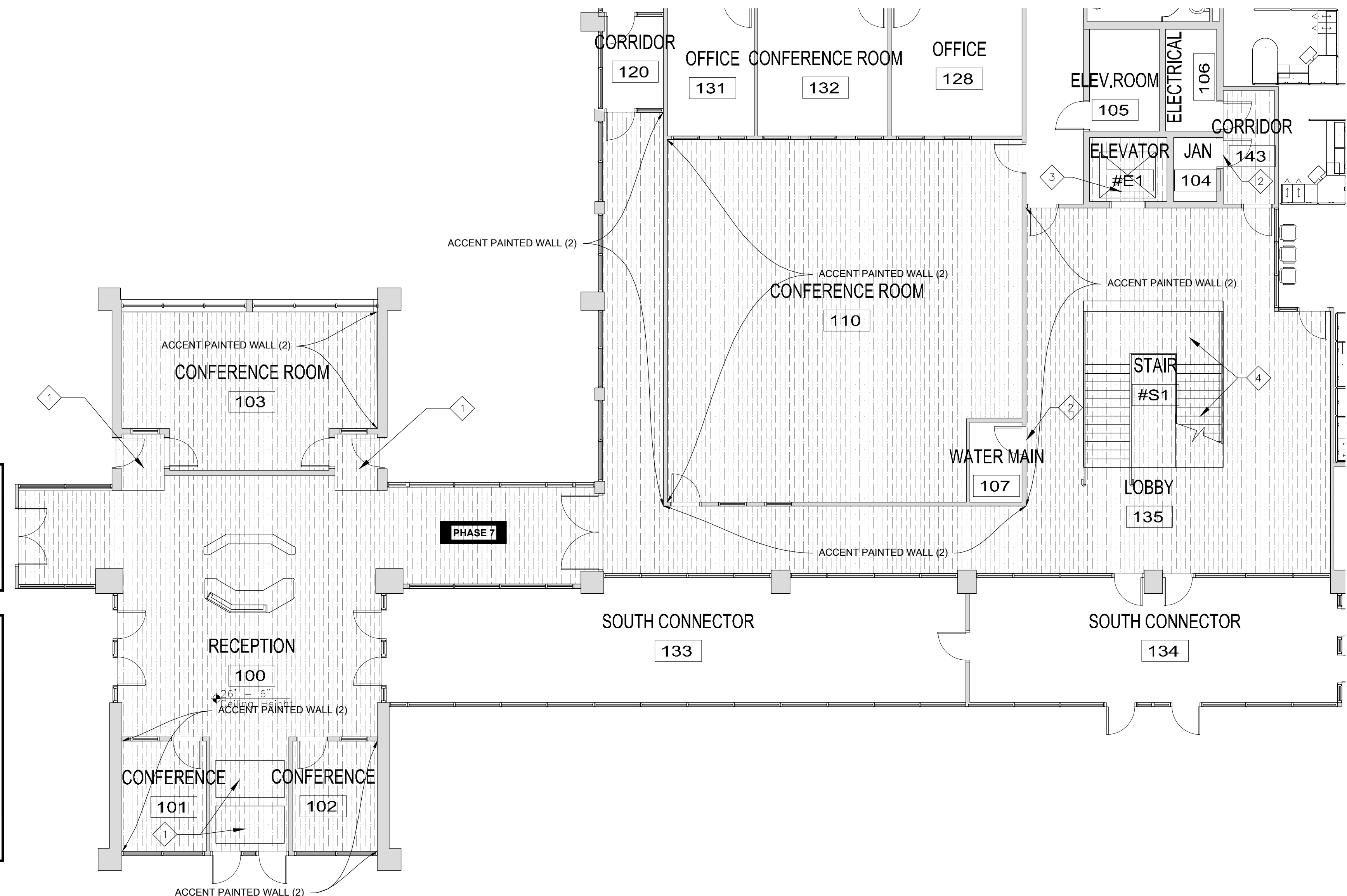
- CARPET RENOVATION NOTES:**
- ALL ELECTRICAL AND DATA FLOOR OUTLETS SHALL BE RETAINED AND ACCOUNTED FOR IN NEW CARPET INSTALLATION.
 - INSTALL NEW CARPET TILES PROVIDED BY OWNER, MOHAWK 24" X 24" CARPET TILE, WITH ADHESIVE GLUE PROVIDED BY OWNER IN A 1/4 TURN PATTERN. CARPET TILE INSTALLATION SHALL BE IN ACCORDANCE WITH MANUFACTURERS INSTRUCTIONS AND BEST PRACTICE. INSTALLATION SHALL RESULT IN A CONTINUOUS AND COHESIVE FINISHED PRODUCT WITH NO TRANSITIONS UNLESS OTHERWISE NOTED. ALL PHASES SHALL STOP AT NEAREST FULL TILE RUN TO ACCEPT THE NEXT PHASES LAY DOWN IN A CONTINUOUS MANNER.
 - ALL CUBICAL CONFIGURATIONS, SHELVES, FILES, AND NON PERSONAL FURNITURE SHALL REMAIN IN THE SUITE FOR THE DURATION OF THE PROJECT.
 - CONTRACTOR SHALL MOVE OR LIFT AND REPLACE ALL FURNITURE ITEMS PER PHASE. SOME FREE STANDING FURNITURE MAY NOT BE SHOWN ON DRAWINGS.
 - CUBICAL STRUCTURES ARE TO BE LIFTED IN PLACE OR SLID INTACT SO AS NOT TO FULLY DISASSEMBLE OFFICE SPACE LAYOUTS. CUBICLE STRUCTURES TO BE PLACED BACK INTO ORIGINAL LOCATION.
 - CUBICLES AND OFFICE SPACES WILL BE EMPTIED OF ALL PERSONAL AND TECHNOLOGY ITEMS BY OWNER.

- PAINT RENOVATION NOTES:**
- REMOVE ALL EXISTING VINYL COVE WALL BASE AND DISPOSE. DEMOUNTABLE WALL TRIM TO REMAIN.
 - ALL WALLS TO BE REPAIRED AND PREPARED TO A LEVEL 4 FINISH OR GREATER PRIOR TO ANY FINISH BEING APPLIED TO SURFACES.
 - VERIFY ALL PAINT COLOR DESIGNATIONS ON THIS SHEET PRIOR TO EACH PHASE WITH OWNER/ CONSTRUCTION MANAGER.
 - PAINT TO BE SUPPLIED AND APPLIED BY CONTRACTOR. ALL WALLS TO BE PAINTED BASE COLOR UNLESS SPECIFIED TO BE PAINTED ACCENT COLOR.
 - PROTECT ALL NEWLY PAINTED WALLS THROUGHOUT CONSTRUCTION FROM DAMAGE. TOUCH UP ALL FINISHED SURFACES AS NEEDED.

- GENERAL NOTES:**
- ALL DIMENSIONS RELATIVE TO EXISTING CONDITIONS ARE APPROXIMATE AND MAY VARY. CONTRACTOR SHALL VERIFY ALL DIMENSIONS AND EXISTING CONDITIONS. MINOR DIFFERENCES BETWEEN WHAT IS SHOWN AND THE ACTUAL DIMENSIONS WILL NOT BE CONSIDERED THE BASIS FOR AN EXTRA OR CREDIT.
 - CUBICAL CONFIGURATIONS ARE SUBJECT TO CHANGE AND SHOULD BE VERIFIED BEFORE THE START OF EACH PHASE.
 - PROTECT ALL FIXED EQUIPMENT, FURNITURE AND FINISHES DURING CONSTRUCTION.
 - DURING WORK AND ANY DAMAGE INCURRED SHALL BE REPAIRED AND REPAINTED BY CONTRACTOR.
 - CONTRACTOR TO FIELD VERIFY ALL IN FLOOR DATA AND ELECTRICAL POINTS PRIOR TO EACH PHASE. LOCATIONS AND ACCESS TO BE MAINTAINED DURING INSTALLATION.
 - CONTRACTOR TO RECYCLE ALL CARDBOARD PACKAGING REFUSE OFF SITE.
 - CONTRACTOR TO DISPOSE OF TRASH AND DEBRIS OFF SITE ON A DAILY BASIS.
 - PATHWAYS, ELEVATORS, LOADING DOCKS AND ANY BUILDING CARTS, CORRIDORS OR STORAGE AREAS USED BY THE CONTRACTOR SHALL BE PROTECTED AND KEEP FREE FROM DEFECT.
 - CONTRACTOR TO USE NOTED ENTRANCES TO WORKSPACE.
 - DOORS ARE TO BE KEPT SECURE AND LOCKED. DO NOT PROP OPEN DOORS IN ANY AREA OF THE FACILITY.
 - TECHNICAL ITEMS SUCH AS BUT NOT LIMITED TO WHITEBOARDS, DIGITAL DISPLAYS AND MEDIA INSTALLATIONS ARE TO BE REMOVED AND REPLACED BY THE OWNER AND COORDINATED WITH THE CONSTRUCTION ADMINISTRATOR.
 - CONTRACTOR TO TRANSPORT OWNER SUPPLIED CARPET TILES FROM 615 E. 13TH STREET DOCK LOCATION TO PROJECT LOCATION AS NEEDED PER PHASE OF CONSTRUCTION. MATERIALS TO BE STORED ON-SITE IN CONTRACTOR SUPPLIED CONEX STORAGE CONTAINER.



- RENOVATION TAG NOTES:**
- CONTRACTOR TO REMOVE EXISTING ENTRY WAY FLOORING MATERIAL AND INSTALL WALK OFF TILE CARPET IN EXISTING ENTRY WAY FLOOR RECESS.
 - NEW TRANSITION STRIP REQUIRED AT THIS LOCATION.
 - WALK OFF CARPET TO BE INSTALL IN CAB OF ELEVATOR.
 - RUBBER STAIR TREADS AND FLOORING TO BE REMOVED AND REPLACED WITH NEW.



1 ENLARGED PARTIAL PLAN - PHASE 7
1/8" = 1'-0"



Brad M. Schaefer - Architect
MO# A-2009027294

OFFICE OF
ADMINISTRATION
DIVISION OF FACILITIES
MANAGEMENT / DESIGN
AND CONSTRUCTION
DEPARTMENT OF
LABOR & INDUSTRIAL
RELATIONS

CARPETING AND PAINTING

KANSAS CITY DOLIR
OFFICE BUILDING
1410 GENESSEE
KANSAS CITY, MO

PROJECT # O243401
SITE # 1018
FACILITY # 3101018001

REVISION:
DATE: _____
REVISION:
DATE: _____
REVISION:
DATE: _____
ISSUE DATE: 9/27/2024

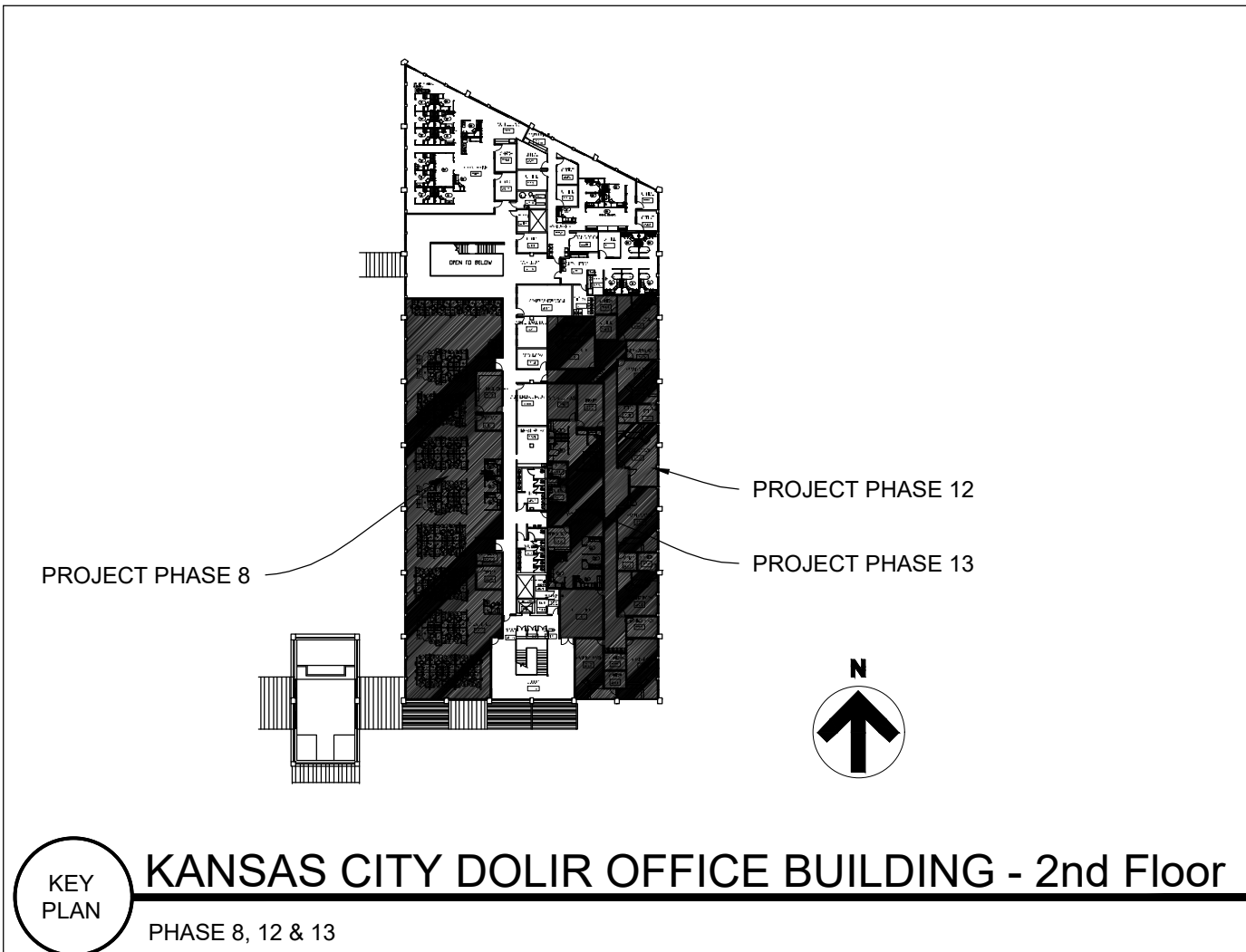
CAD DWG FILE: 0019-05204-A-FP-01
DRAWN BY: Kirkwj
CHECKED BY: BMS
DESIGNED BY: BMS

SHEET TITLE:
ENLARGED PLAN,
PHASE 8, 12 & 13
ROOM SCHEDULE

SHEET NUMBER:

I-405

9 OF 11 SHEETS
09/27/2024



PHASE 8 - ROOM FINISH SCHEDULE

PHASE	NUMBER	ROOM NAME	PERIMETER	AREA	PAINT	FLOORING	WALL BASE	FINISH	NOTES
Phase 08	211	COMPUTER STORAGE	63'-9"	241 Sq.Ft.	(1)	(3)	(4)	(4)	--
	212	STORAGE	39'-7"	92 Sq.Ft.	(1)	(3)	(4)	(4)	--
	220	OPEN OFFICE	56'-5-3/4"	1708 Sq.Ft.	(1),(2)	(3)	(4)	(4)	--
	225	OFFICE	45'-9"	130 Sq.Ft.	(1)	(3)	(4)	(4)	--
	226	COFFEE BAR	36'-9"	75 Sq.Ft.	(1),(2)	N/A	(4)	(4)	--
			749'-0"	8246 Sq.Ft.					
			749'-0"	8246 Sq.Ft.					

PHASE 12 - ROOM FINISH SCHEDULE

PHASE	NUMBER	ROOM NAME	PERIMETER	AREA	PAINT	FLOORING	WALL BASE	FINISH	NOTES
Phase 12	209	CORRIDOR	395'-10"	1307 Sq.Ft.	(1),(2)	(3)	(4)	(4)	--
	217	RECEPTION	85'-4"	455 Sq.Ft.	(1),(2)	(3)	(4)	(4)	--
	224	OFFICE	36'-3"	82 Sq.Ft.	(1)	(3)	(4)	(4)	--
	240	HEARING ROOM	172'-11"	525 Sq.Ft.	(1)	(3)	(4)	(4)	--
	241	OFFICE	43'-0"	115 Sq.Ft.	(1)	(3)	(4)	(4)	--
	242	HEARING ROOM	119'-11"	394 Sq.Ft.	(1)	(3)	(4)	(4)	--
	243	OFFICE	37'-3"	86 Sq.Ft.	(1)	(3)	(4)	(4)	--
	245	HEARING ROOM	118'-4"	377 Sq.Ft.	(1)	(3)	(4)	(4)	--
	248	OFFICE	35'-10"	80 Sq.Ft.	(1)	(3)	(4)	(4)	--
	249	INTERVIEW ROOM	46'-11"	124 Sq.Ft.	(1),(2)	(3)	(4)	(4)	--
	250	HEARING ROOM	119'-11"	496 Sq.Ft.	(1)	(3)	(4)	(4)	--
	251	HEARING ROOM	139'-9"	512 Sq.Ft.	(1)	(3)	(4)	(4)	--
	252	OFFICE	34'-9"	75 Sq.Ft.	(1)	(3)	(4)	(4)	--
	253	HEARING ROOM	119'-4"	386 Sq.Ft.	(1)	(3)	(4)	(4)	--
	254	OFFICE	35'-2"	77 Sq.Ft.	(1)	(3)	(4)	(4)	--
	255	INTERVIEW ROOM	49'-0"	144 Sq.Ft.	(1),(2)	(3)	(4)	(4)	--
	256	HEARING ROOM	125'-9"	420 Sq.Ft.	(1)	(3)	(4)	(4)	--
257	OFFICE	36'-10"	83 Sq.Ft.	(1)	(3)	(4)	(4)	--	
258	OFFICE	36'-10"	83 Sq.Ft.	(1)	(3)	(4)	(4)	--	
259	HEARING ROOM	124'-10"	393 Sq.Ft.	(1)	(3)	(4)	(4)	--	
			1929'-6"	6204 Sq.Ft.					
			1929'-6"	6204 Sq.Ft.					

PHASE 13 - ROOM FINISH SCHEDULE

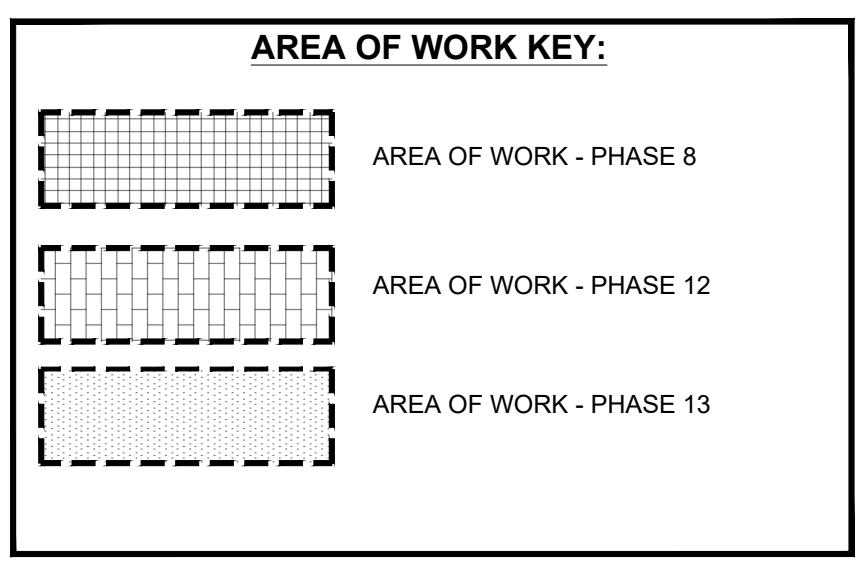
PHASE	NUMBER	ROOM NAME	PERIMETER	AREA	PAINT	FLOORING	WALL BASE	FINISH	NOTES
Phase 13	261	OPEN OFFICE	318'-6"	1687 Sq.Ft.	(1)	(3)	(4)	(4)	--
	262	BREAK ROOM	44'-0"	121 Sq.Ft.	(1)	N/A	(4)	(4)	--
	263	RESTROOM	32'-3"	64 Sq.Ft.	(1)	N/A	(4)	(4)	--
	264	STORAGE	15'-9"	15 Sq.Ft.	(1)	(3)	(4)	(4)	--
	265	RESTROOM	32'-3"	64 Sq.Ft.	(1)	N/A	(4)	(4)	--
	266	STORAGE ROOM	61'-0"	229 Sq.Ft.	(1)	(3)	(4)	(4)	--
	267	LIBRARY	66'-11"	252 Sq.Ft.	(1)	(3)	(4)	(4)	--
			569'-10"	2432 Sq.Ft.					
			569'-10"	2432 Sq.Ft.					

- BASE WALL PAINT COLOR: SHERWIN WILLIAMS, EG-SHEL, SW 7555, PATIENCE
CEILING PAINT COLOR: SHERWIN WILLIAMS, EG-SHEL, SW7005, PURE WHITE
- ACCENT WALL PAINT COLOR: SHERWIN WILLIAMS, EG-SHEL, SW6528 COSMOS.
PAINT WALL BETWEEN ARROWS SHOWN ON ENLARGED PLANS
- MOHAWK GROUP, STYLE: FIRST ONE UP II BR443, COLOR: 959 PREFERENCE,
24"x24"
OWNER TO SUPPLY CARPET - N.I.C.
- JOHNSONITE TRADITIONAL VINYL 4" TOELESS COVE WALL BASE, COLOR:
"CHARCOAL WG"
- VINYL STAIR TREAD AND LANDINGS TO BE REPLACED.
MANUFACTURER: NORAMENT ROUND STAIR TREAD AND FLOOR TILE, COLOR 0749
STONE GREY.
- WALK-OFF CARPET.
MOHAWK GROUP-TUFF STUFF II COLLECTION, STYLE: FIRST STEP II GT315, COLOR:
955 COBALT, 24"x24". OWNER TO SUPPLY CARPET - N.I.C.

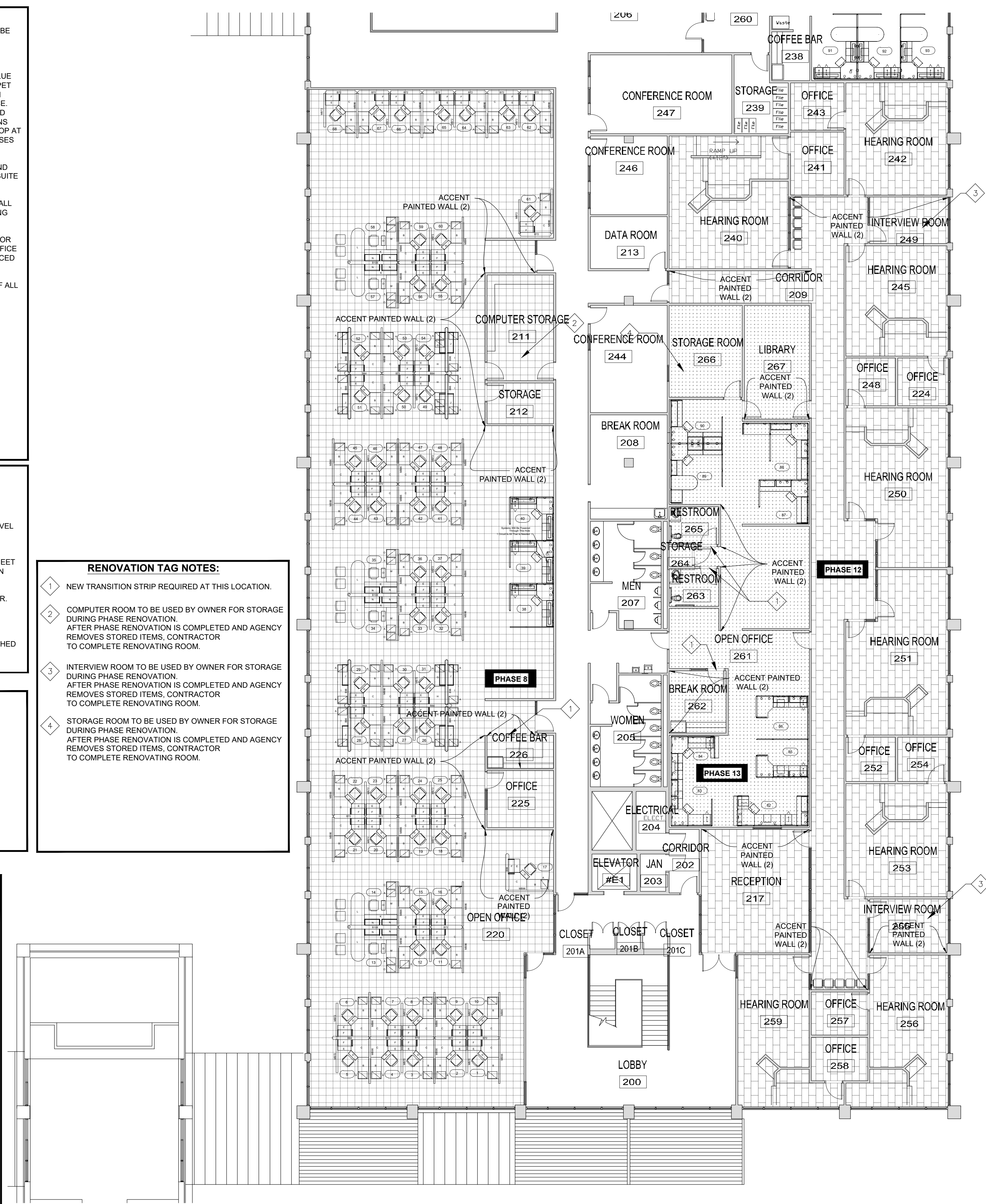
- GENERAL NOTES:**
- ALL DIMENSIONS RELATIVE TO EXISTING CONDITIONS ARE APPROXIMATE AND MAY VARY. CONTRACTOR SHALL VERIFY ALL DIMENSIONS AND EXISTING CONDITIONS. MINOR DIFFERENCES BETWEEN WHAT IS SHOWN AND THE ACTUAL DIMENSIONS WILL NOT BE CONSIDERED THE BASIS FOR AN EXTRA OR CREDIT.
 - CUBICAL CONFIGURATIONS ARE SUBJECT TO CHANGE AND SHOULD BE VERIFIED BEFORE THE START OF EACH PHASE.
 - PROTECT ALL FIXED EQUIPMENT, FURNITURE AND FINISHES DURING CONSTRUCTION.
 - DURING WORK AND ANY DAMAGE INCURRED SHALL BE REPAIRED AND REPAINTED BY CONTRACTOR.
 - CONTRACTOR TO FIELD VERIFY ALL IN FLOOR DATA AND ELECTRICAL POINTS PRIOR TO EACH PHASE. LOCATIONS AND ACCESS TO BE MAINTAINED DURING INSTALLATION.
 - CONTRACTOR TO RECYCLE ALL CARDBOARD PACKAGING REFUSE OFF SITE.
 - CONTRACTOR TO DISPOSE OF TRASH AND DEBRIS OFF SITE ON A DAILY BASIS.
 - PATHWAYS, ELEVATORS, LOADING DOCKS AND ANY BUILDING CARTS, CORRIDORS OR STORAGE AREAS USED BY THE CONTRACTOR SHALL BE PROTECTED AND KEEP FREE FROM DEFECT.
 - CONTRACTOR TO USE NOTED ENTRANCES TO WORKSPACE.
 - DOORS ARE TO BE KEPT SECURE AND LOCKED. DO NOT PROP OPEN DOORS IN ANY AREA OF THE FACILITY.
 - TECHNICAL ITEMS SUCH AS BUT NOT LIMITED TO WHITEBOARDS, DIGITAL DISPLAYS AND MEDIA INSTALLATIONS ARE TO BE REMOVED AND REPLACED BY THE OWNER AND COORDINATED WITH THE CONSTRUCTION ADMINISTRATOR.
 - CONTRACTOR TO TRANSPORT OWNER SUPPLIED CARPET TILES FROM 615 E. 13TH STREET DOCK LOCATION TO PROJECT LOCATION AS NEEDED PER PHASE OF CONSTRUCTION. MATERIALS TO BE STORED ON-SITE IN CONTRACTOR SUPPLIED CONEX STORAGE CONTAINER.

- CARPET RENOVATION NOTES:**
- ALL ELECTRICAL AND DATA FLOOR OUTLETS SHALL BE RETAINED AND ACCOUNTED FOR IN NEW CARPET INSTALLATION.
 - INSTALL NEW CARPET TILES PROVIDED BY OWNER, MOHAWK 24" X 24" CARPET TILE, WITH ADHESIVE GLUE PROVIDED BY OWNER IN A 1/4 TURN PATTERN. CARPET TILE INSTALLATION SHALL BE IN ACCORDANCE WITH MANUFACTURERS INSTRUCTIONS AND BEST PRACTICE. INSTALLATION SHALL RESULT IN A CONTINUOUS AND COHESIVE FINISHED PRODUCT WITH NO TRANSITIONS UNLESS OTHERWISE NOTED. ALL PHASES SHALL STOP AT NEAREST FULL TILE RUN TO ACCEPT THE NEXT PHASES LAY DOWN IN A CONTINUOUS MANNER.
 - ALL CUBICAL CONFIGURATIONS, SHELVES, FILES, AND NON PERSONAL FURNITURE SHALL REMAIN IN THE SUITE FOR THE DURATION OF THE PROJECT.
 - CONTRACTOR SHALL MOVE OR LIFT AND REPLACE ALL FURNITURE ITEMS PER PHASE. SOME FREE STANDING FURNITURE MAY NOT BE SHOWN ON DRAWINGS.
 - CUBICAL STRUCTURES ARE TO BE LIFTED IN PLACE OR SLID INTACT SO AS NOT TO FULLY DISASSEMBLE OFFICE SPACE LAYOUTS. CUBICLE STRUCTURES TO BE PLACED BACK INTO ORIGINAL LOCATION.
 - CUBICLES AND OFFICE SPACES WILL BE EMPTIED OF ALL PERSONAL AND TECHNOLOGY ITEMS BY AGENCY.

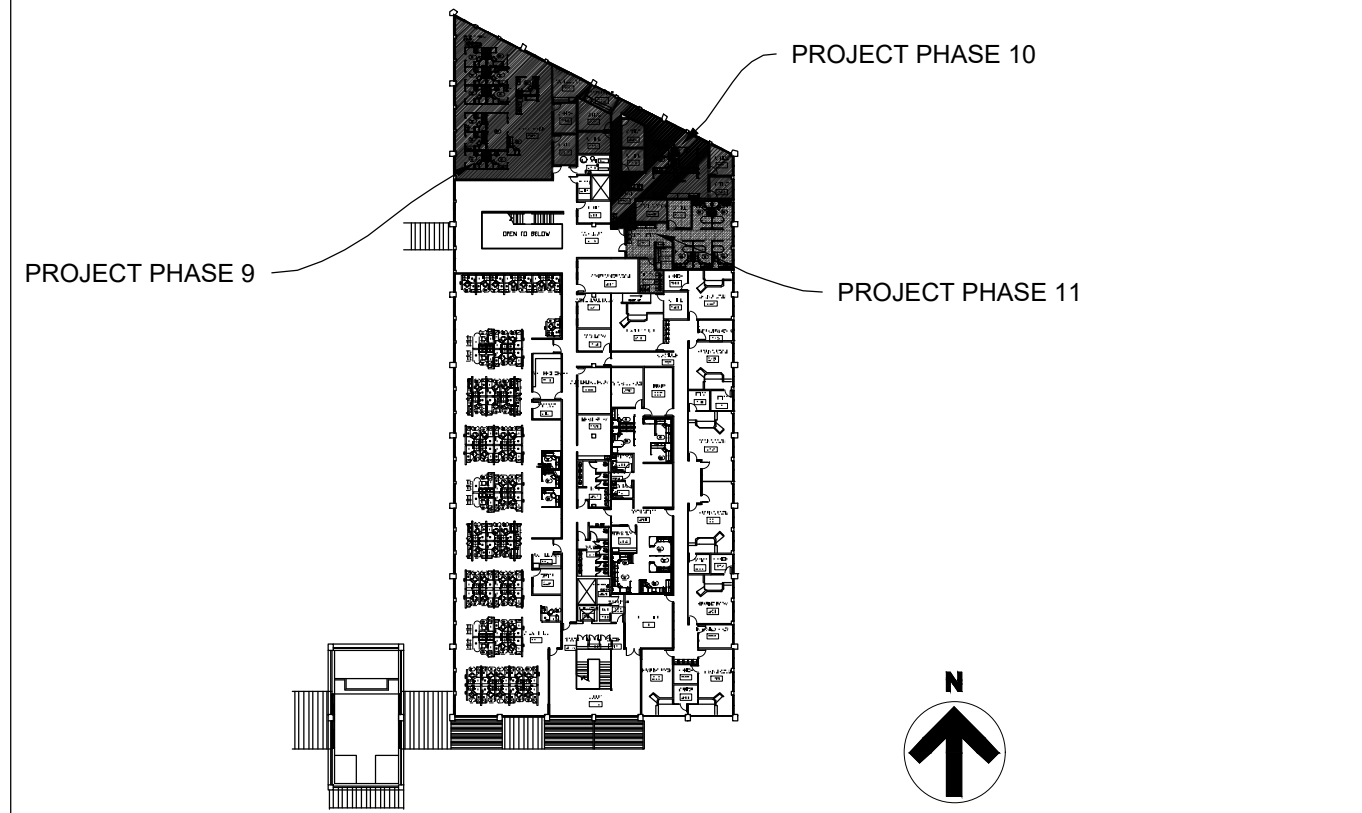
- PAINT RENOVATION NOTES:**
- REMOVE ALL EXISTING VINYL COVE WALL BASE AND DISPOSE. DEMOUNTABLE WALL TRIM TO REMAIN.
 - ALL WALLS TO BE REPAIRED AND PREPARED TO A LEVEL 4 FINISH OR GREATER PRIOR TO ANY FINISH BEING APPLIED TO SURFACES.
 - VERIFY ALL PAINT COLOR DESIGNATIONS ON THIS SHEET PRIOR TO EACH PHASE WITH OWNER/ CONSTRUCTION MANAGER.
 - PAINT TO BE SUPPLIED AND APPLIED BY CONTRACTOR. ALL WALLS TO BE PAINTED BASE COLOR UNLESS SPECIFIED TO BE PAINTED ACCENT COLOR.
 - PROTECT ALL NEWLY PAINTED WALLS THROUGHOUT CONSTRUCTION FROM DAMAGE. TOUCH UP ALL FINISHED SURFACES AS NEEDED.



- RENOVATION TAG NOTES:**
- NEW TRANSITION STRIP REQUIRED AT THIS LOCATION.
 - COMPUTER ROOM TO BE USED BY OWNER FOR STORAGE DURING PHASE RENOVATION. AFTER PHASE RENOVATION IS COMPLETED AND AGENCY REMOVES STORED ITEMS, CONTRACTOR TO COMPLETE RENOVATING ROOM.
 - INTERVIEW ROOM TO BE USED BY OWNER FOR STORAGE DURING PHASE RENOVATION. AFTER PHASE RENOVATION IS COMPLETED AND AGENCY REMOVES STORED ITEMS, CONTRACTOR TO COMPLETE RENOVATING ROOM.
 - STORAGE ROOM TO BE USED BY OWNER FOR STORAGE DURING PHASE RENOVATION. AFTER PHASE RENOVATION IS COMPLETED AND AGENCY REMOVES STORED ITEMS, CONTRACTOR TO COMPLETE RENOVATING ROOM.



1 ENLARGED PARTIAL PLAN - PHASE 8, 12 & 13
3/32" = 1'-0"



KEY PLAN
KANSAS CITY DOLIR OFFICE BUILDING - 2nd Floor
PHASE 9, 10 & 11

PHASE 9 - ROOM FINISH SCHEDULE								
PHASE	NUMBER	ROOM NAME	PERIMETER	AREA	PAINT	FLOORING	WALL BASE	NOTES
Phase 09	227	OFFICE	45'-3"	125 Sq.Ft.	(1)	(3)	(4)	--
	228	OFFICE	45'-3"	125 Sq.Ft.	(1)	(3)	(4)	--
	229	COFFEE BAR	57'-6"	168 Sq.Ft.	(1),(2)	N/A	(4)	--
	290	OPEN OFFICE	209'-10"	2442 Sq.Ft.	(1),(2)	(3)	(4)	--
			357'-10"	2861 Sq.Ft.				

PHASE 10 - ROOM FINISH SCHEDULE								
PHASE	NUMBER	ROOM NAME	PERIMETER	AREA	PAINT	FLOORING	WALL BASE	NOTES
Phase 10	221	OFFICE	51'-3"	150 Sq.Ft.	(1)	(3)	(4)	--
	222	COFFEE BAR	40'-11"	93 Sq.Ft.	(1),(2)	N/A	(4)	--
	223	OFFICE	47'-4"	134 Sq.Ft.	(1)	(3)	(4)	--
	230	OFFICE	41'-3"	107 Sq.Ft.	(1)	(3)	(4)	--
	231	OFFICE	39'-8"	98 Sq.Ft.	(1)	(3)	(4)	--
	232	OFFICE	43'-6"	111 Sq.Ft.	(1)	(3)	(4)	--
	233	OFFICE	39'-4"	95 Sq.Ft.	(1)	(3)	(4)	--
	235	HEARING ROOM	44'-7"	120 Sq.Ft.	(1)	(3)	(4)	--
270	OPEN OFFICE	246'-2"	1284 Sq.Ft.	(1),(2)	(3)	(4)	--	
			584'-0"	2183 Sq.Ft.				

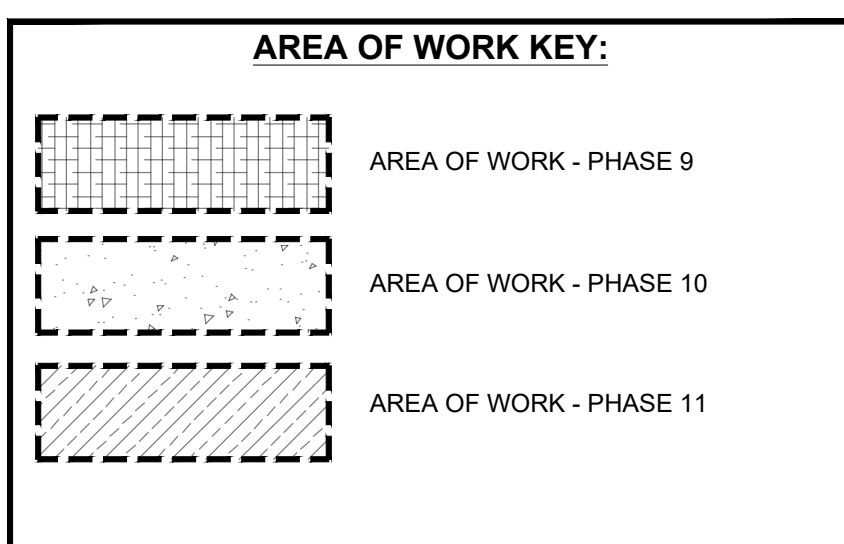
PHASE 11 - ROOM FINISH SCHEDULE								
PHASE	NUMBER	ROOM NAME	PERIMETER	AREA	PAINT	FLOORING	WALL BASE	NOTES
Phase 11	237	OFFICE	43'-8"	118 Sq.Ft.	(1)	(3)	(4)	--
	238	COFFEE BAR	32'-11"	65 Sq.Ft.	(1),(2)	N/A	(4)	--
	239	STORAGE	49'-3"	128 Sq.Ft.	(1)	(3)	(4)	--
	260	OPEN OFFICE	174'-3"	692 Sq.Ft.	(1),(2)	(3)	(4)	--
				300'-6"	1204 Sq.Ft.			

- (1) BASE WALL PAINT COLOR: SHERWIN WILLIAMS, EG-SHEL, SW 7555, PATIENCE
CEILING PAINT COLOR: SHERWIN WILLIAMS, EG-SHEL, SW7005, PURE WHITE
- (2) ACCENT WALL PAINT COLOR: SHERWIN WILLIAMS, EG-SHEL, SW6528 COSMOS. PAINT WALL BETWEEN ARROWS SHOWN ON ENLARGED PLANS
- (3) MOHAWK GROUP, STYLE: FIRST ONE UP II BR443, COLOR: 959 PREFERENCE, 24"x24" OWNER TO SUPPLY CARPET - N.I.C.
- (4) JOHNSONITE TRADITIONAL VINYL 4" TOELESS COVE WALL BASE, COLOR: "CHARCOAL WG"
- (5) VINYL STAIR TREAD AND LANDINGS TO BE REPLACED.
MANUFACTURER: NORAMENT ROUND STAIR TREAD AND FLOOR TILE, COLOR 0749 STONE GREY.
- (6) WALK-OFF CARPET.
MOHAWK GROUP-TUFF STUFF II COLLECTION, STYLE: FIRST STEP II GT315, COLOR: 955 COBALT, 24"x24". OWNER TO SUPPLY CARPET - N.I.C.

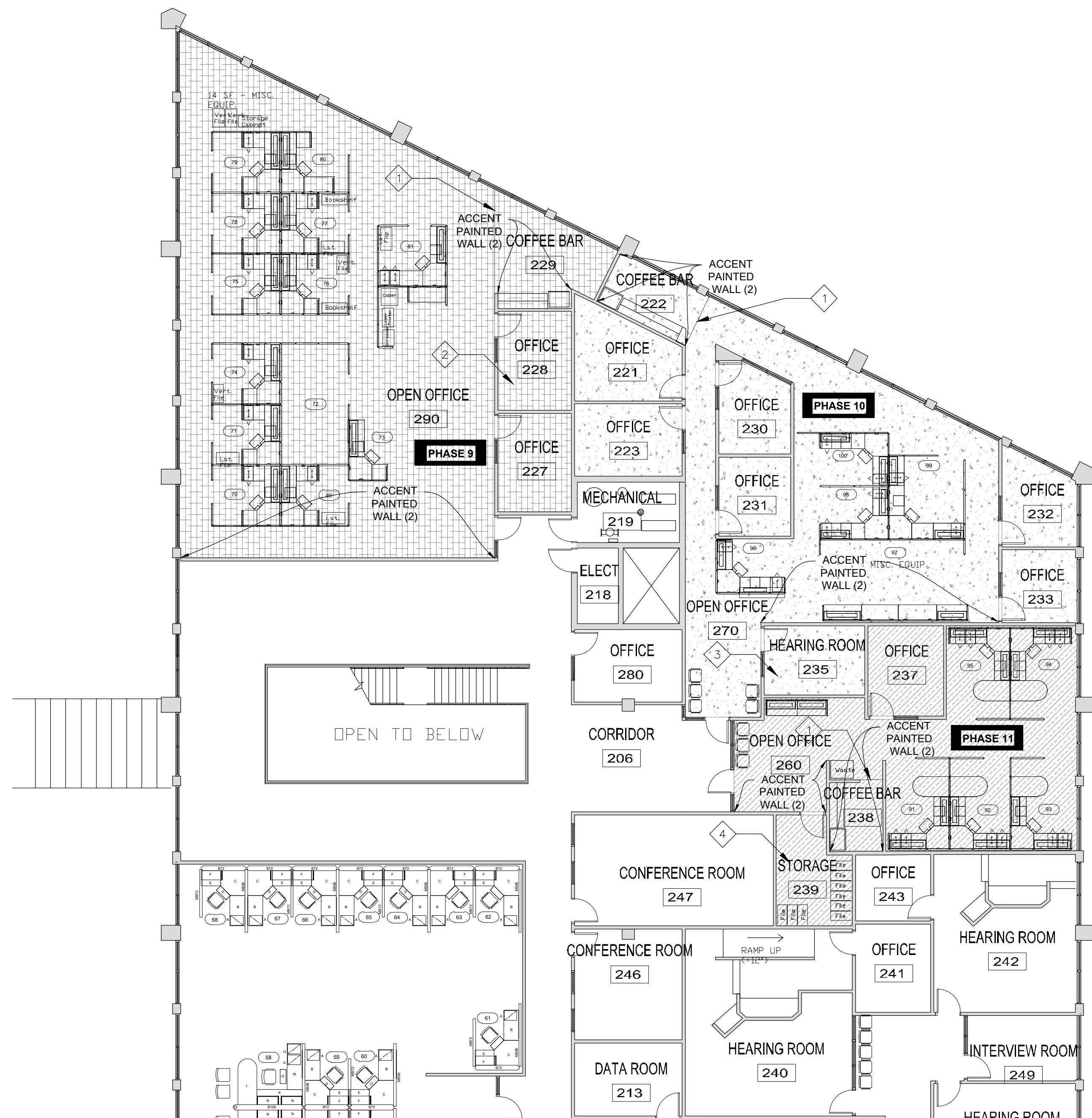
- GENERAL NOTES:**
- ALL DIMENSIONS RELATIVE TO EXISTING CONDITIONS ARE APPROXIMATE AND MAY VARY. CONTRACTOR SHALL VERIFY ALL DIMENSIONS AND EXISTING CONDITIONS. MINOR DIFFERENCES BETWEEN WHAT IS SHOWN AND THE ACTUAL DIMENSIONS WILL NOT BE CONSIDERED THE BASIS FOR AN EXTRA OR CREDIT.
 - CUBICAL CONFIGURATIONS ARE SUBJECT TO CHANGE AND SHOULD BE VERIFIED BEFORE THE START OF EACH PHASE.
 - PROTECT ALL FIXED EQUIPMENT, FURNITURE AND FINISHES DURING CONSTRUCTION.
 - DURING WORK AND ANY DAMAGE INCURRED SHALL BE REPAIRED AND REPAINTED BY CONTRACTOR.
 - CONTRACTOR TO FIELD VERIFY ALL IN FLOOR DATA AND ELECTRICAL POINTS PRIOR TO EACH PHASE. LOCATIONS AND ACCESS TO BE MAINTAINED DURING INSTALLATION.
 - CONTRACTOR TO RECYCLE ALL CARDBOARD PACKAGING REFUSE OFF SITE.
 - CONTRACTOR TO DISPOSE OF TRASH AND DEBRIS OFF SITE ON A DAILY BASIS.
 - PATHWAYS, ELEVATORS, LOADING DOCKS AND ANY BUILDING CARTS, CORRIDORS OR STORAGE AREAS USED BY THE CONTRACTOR SHALL BE PROTECTED AND KEEP FREE FROM DEFECT.
 - CONTRACTOR TO USE NOTED ENTRANCES TO WORKSPACE.
 - DOORS ARE TO BE KEPT SECURE AND LOCKED. DO NOT PROP OPEN DOORS IN ANY AREA OF THE FACILITY.
 - TECHNICAL ITEMS SUCH AS BUT NOT LIMITED TO WHITEBOARDS, DIGITAL DISPLAYS AND MEDIA INSTALLATIONS ARE TO BE REMOVED AND REPLACED BY THE OWNER AND COORDINATED WITH THE CONSTRUCTION ADMINISTRATOR.
 - CONTRACTOR TO TRANSPORT OWNER SUPPLIED CARPET TILES FROM 615 E. 13TH STREET DOCK LOCATION TO PROJECT LOCATION AS NEEDED PER PHASE OF CONSTRUCTION. MATERIALS TO BE STORED ON-SITE IN CONTRACTOR SUPPLIED CONEX STORAGE CONTAINER.

- CARPET RENOVATION NOTES:**
- ALL ELECTRICAL AND DATA FLOOR OUTLETS SHALL BE RETAINED AND ACCOUNTED FOR IN NEW CARPET INSTALLATION.
 - INSTALL NEW CARPET TILES PROVIDED BY OWNER. MOHAWK 24" X 24" CARPET TILE, WITH ADHESIVE GLUE PROVIDED BY OWNER IN A 1/4 TURN PATTERN. CARPET TILE INSTALLATION SHALL BE IN ACCORDANCE WITH MANUFACTURER'S INSTRUCTIONS AND BEST PRACTICE. INSTALLATION SHALL RESULT IN A CONTINUOUS AND COHESIVE FINISHED PRODUCT WITH NO TRANSITIONS UNLESS OTHERWISE NOTED. ALL PHASES SHALL STOP AT NEAREST FULL TILE RUN TO ACCEPT THE NEXT PHASES LAY DOWN IN A CONTINUOUS MANNER.
 - ALL CUBICAL CONFIGURATIONS, SHELVES, FILES, AND NON PERSONAL FURNITURE SHALL REMAIN IN THE SUITE FOR THE DURATION OF THE PROJECT.
 - CONTRACTOR SHALL MOVE OR LIFT AND REPLACE ALL FURNITURE ITEMS PER PHASE. SOME FREE STANDING FURNITURE MAY NOT BE SHOWN ON DRAWINGS.
 - CUBICAL STRUCTURES ARE TO BE LIFTED IN PLACE OR SLID INTACT SO AS NOT TO FULLY DISASSEMBLE OFFICE SPACE LAYOUTS. CUBICLE STRUCTURES TO BE PLACED BACK INTO ORIGINAL LOCATION.
 - CUBICLES AND OFFICE SPACES WILL BE EMPTIED OF ALL PERSONAL AND TECHNOLOGY ITEMS BY OWNER.

- PAINT RENOVATION NOTES:**
- REMOVE ALL EXISTING VINYL COVE WALL BASE AND DISPOSE. DEMOUNTABLE WALL TRIM TO REMAIN.
 - ALL WALLS TO BE REPAIRED AND PREPARED TO A LEVEL 4 FINISH OR GREATER PRIOR TO ANY FINISH BEING APPLIED TO SURFACES.
 - VERIFY ALL PAINT COLOR DESIGNATIONS ON THIS SHEET PRIOR TO EACH PHASE WITH OWNER/ CONSTRUCTION MANAGER.
 - PAINT TO BE SUPPLIED AND APPLIED BY CONTRACTOR. ALL WALLS TO BE PAINTED BASE COLOR UNLESS SPECIFIED TO BE PAINTED ACCENT COLOR.
 - PROTECT ALL NEWLY PAINTED WALLS THROUGHOUT CONSTRUCTION FROM DAMAGE. TOUCH UP ALL FINISHED SURFACES AS NEEDED.



- RENOVATION TAG NOTES:**
- NEW TRANSITION STRIP REQUIRED AT THIS LOCATION.
 - OFFICE TO BE USED BY AGENCY FOR STORAGE DURING PHASE RENOVATION. AFTER PHASE RENOVATION IS COMPLETED AND OWNER REMOVES STORED ITEMS, CONTRACTOR TO COMPLETE RENOVATING OFFICE.
 - HEARING ROOM TO BE USED BY AGENCY FOR STORAGE DURING PHASE RENOVATION. AFTER PHASE RENOVATION IS COMPLETED AND OWNER REMOVES STORED ITEMS, CONTRACTOR TO COMPLETE RENOVATING ROOM.
 - STORAGE ROOM TO BE USED BY AGENCY FOR STORAGE DURING PHASE RENOVATION. AFTER PHASE RENOVATION IS COMPLETED AND OWNER REMOVES STORED ITEMS, CONTRACTOR TO COMPLETE RENOVATING ROOM.



1 ENLARGED PARTIAL PLAN - PHASE 9, 10 & 11
3/32" = 1'-0"



Brad M. Schaefer - Architect
MO# A-2009027294

OFFICE OF
ADMINISTRATION
DIVISION OF FACILITIES
MANAGEMENT / DESIGN
AND CONSTRUCTION
DEPARTMENT OF
LABOR & INDUSTRIAL
RELATIONS

CARPETING AND PAINTING

KANSAS CITY DOLIR
OFFICE BUILDING
1410 GENESSEE
KANSAS CITY, MO

PROJECT # O243401
SITE # 1018
FACILITY # 3101018001

REVISION: _____
DATE: _____
REVISION: _____
DATE: _____
REVISION: _____
DATE: _____
ISSUE DATE: 9/27/2024

CAD DWG FILE: 0019-05204-A-FP-01
DRAWN BY: Kirkwj
CHECKED BY: BMS
DESIGNED BY: BMS

SHEET TITLE:
**ENLARGED PLAN,
PHASE 9, 10 & 11
ROOM SCHEDULE**

SHEET NUMBER:

I-406
10 OF 11 SHEETS
09/27/2024

