

## ADDENDUM NO. 2

**TO: PLANS AND SPECIFICATIONS FOR STATE OF MISSOURI**

***Interior Remodel***  
***St. Louis County Regional State Office Building***  
**1390 Timberlake Manor Parkway, Chesterfield, MO**  
**PROJECT NO. O2521-01**

**Bid Opening Date:** 1:30 PM, March 4, 2025

**Bidders are hereby informed of the following:**

**SPECIFICATION CHANGES:**

1. Section 000115 – List of Drawings (attached)
  - a. REVISE the title of sheet 25 as follows:
    - “25. Fire Protection Plan 1<sup>st</sup>, 2<sup>nd</sup>, and 4<sup>th</sup> floor”
2. Section 096700 – Fluid Applied Flooring
  - a. ADD the following approved manufacturers to Paragraph 2.01-A-7:
    - “Dudick, a division of Carboline.”
3. Section 238126.13 – Small Capacity Split System Air Conditioners
  - a. ADD the following approved manufacturers to Paragraph 2.01-D:
    - “LG Electronics USA: [www.lghvac.com](http://www.lghvac.com)”

**DRAWING CHANGES:**

1. Section 238126.13 – Small Capacity Split System Air Conditioners
  - a. Revise Appliance Equipment Schedule “locations” to read as follows:
    - MW1 Breakrooms 510 and 526
    - REF1 Breakrooms 510, 526, and 568
    - UCR1 Mother’s Room 569
    - DW1 Breakrooms 510 and 526

2. Sheet F-101 – Fire Protection Plan – 1<sup>st</sup>, 2<sup>nd</sup>, and 4<sup>th</sup> floor. (attached)

- Title of sheet to read “Fire Protection Plan – 1<sup>st</sup>, 2<sup>nd</sup>, and 4<sup>th</sup> floor.”
- Second Floor Changes: Demolition of existing sprinkler heads and addition of new sprinkler heads.
- Fourth Floor Changes: Addition of one sprinkler head.

**GENERAL:**

1. Please contact Paul Girouard, Contract Specialist, at 573-751-4797 or Paul.Girouard@oa.mo.gov for questions about bidding procedures, MBE\WBE\SDVE Goals, and other submittal requirements.
2. The deadline for technical questions is February 24, 2025 at 12:00 p.m.
3. Changes to, or clarification of, the bid documents are only made as issued in the addenda.
4. All correspondence with respect to this project must include the State of Missouri project number O2521-01.
5. Current Plan Holders list available online at: [Bid Listing/ Electronic Plans \(Projects Currently Bidding\) | Office of Administration \(mo.gov\)](#) O2521-01- Interior Renovations, St. Louis County Regional State Office Building.
6. Prospective Bidders contact American Document Solutions, 1400 Forum Blvd Suite 7A, Columbia MO 65203, 573-446-7768 to order official plans and specifications.
7. All bids shall be submitted on the bid form without additional terms and conditions, modifications, or stipulations. Each space on the bid form shall be properly filled including a bid amount for the alternates. Failure to do so will result in rejection of the bid.
8. MBE/WBE/SDVE participation goals are 10%/10%/3%, respectively. Only certified firms as of the bid opening date can be used to satisfy the MBE/WBE/SDVE participation goals for this project. If a bidder is unable to meet a participation goal, a Good Faith Effort Determination Form must be completed. Failure to complete this process will result in rejection of the bid.

**ATTACHMENTS:**

1. Pre Bid Sign In Sheets (7 Pages)
2. Section 000115 List of Drawings
3. Sheet F-101

By the Order of:

Brad M. Schaefer., Project Manager  
Division of Facilities Management,  
Design and Construction  
February 20, 2025

**END ADDENDUM NO. 2**

Pre-Bid Meeting Attendance Sheet  
 Interior Remodel  
 St. Louis County Regional State Office Building  
 Chesterfield, Missouri

Project No. 02521-01  
 February 19, 2025 11:00am

Name & Title	Company Name, Type of Contracting, MBE/WBE/SDVE Status	Phone	E-Mail Address
Denny Mosher Sr Project Mgr	INTERFACE CONSTRUCTION WBE GC	314.522.1011	jerry@interfacestl.com
Nae Goodman Project Mgr	DIRD	618 612 7406	NGOODMAN@DIRD.COMMERSTL.COM
Mike Howard	OA / FMDc	636-875-4160	Mike.Howard@OA.MO.GOV
Alan Elias	A. Elias Construction	314-643-1450	aelias@a-elias-construction.com
BOAD SCHAEFER	OA FMDc - PM; DESIGNER	573-526-0136	BOAD.SCHAEFER@OA.NO.GOV
ERIC HIBDON	OA FMDc PM	573-508-3466	ERIC.HIBDON@OA.NO.GOV

Pre-Bid Meeting Attendance Sheet  
 Interior Remodel  
 St. Louis County Regional State Office Building  
 Chesterfield, Missouri

Project No. O2521-01  
 February 19, 2025 11:00am

Name & Title	Company Name, Type of Contracting, MBE/WBE/SDVE Status	Phone	E-Mail Address
Jason Wood	Leyronal Construction	636 677 7411	jwood@leyronalconstruction.com
JD Jackson	Jackson Building Group	314-578-6633	kjackson@jacksonbuildinggroup.com
Chris Collins	Maxim Construction	314 882 3398	ccollins@maximconstruction.net
Bill Slater	BEX Construction	314-223-3757	bill@hexstl.com
TRACE SIEBENACK	OK-FMDC	573-751-7831	TRACE.SIEBENACK@OK.MO.GOV
BRAND SMITH	OK-FMDC	573-751-1854	BRAND.SMITH@OK.MO.GOV

Pre-Bid Meeting Attendance Sheet  
 Interior Remodel  
 St. Louis County Regional State Office Building  
 Chesterfield, Missouri

Project No. O2521-01  
 February 19, 2025 11:00am

Name & Title	Company Name, Type of Contracting, MBE/WBE/SDVE Status	Phone	E-Mail Address
Terrell Johnson	SES Construction	573-253-9479	TerrellJohnson77@hotmail.com
Justin Rogers PM	Brown & Root	573 301 4995	Justin.Rogers @ BrownandRoot.com
Dave Nichols	SES	573-253-1148	david@sesconstruction.com
Tom Rueden	CI Select Furniture/Knoll - WBE	(314) 330-5200	Trueden@ciselect.com
Thomas Barner	O&F Inc	314-550-0812	Thomas.Barner@O&Finc.com
<del>Terrell Johnson</del>	SIASIS	314-533-7710	TerrellJohnson@SIASIS.com

Pre-Bid Meeting Attendance Sheet  
 Interior Remodel  
 St. Louis County Regional State Office Building  
 Chesterfield, Missouri

Project No. 02521-01  
 February 19, 2025 11:00am

Name & Title	Company Name, Type of Contracting, MBE/WBE/SDVE Status	Phone	E-Mail Address
COLLIN BAKER ESTIMATOR/pm	ARCHIVEUS SERVICES DEMOLITION MBE	636-544-6353	collin.baker@archiveservices.com
TIM FLOWERS Estimator -	CNT Mechanical LLC MBE/WBE	618-328-9465	Tim@cntmechanical.com
Bert Adkins	CNT Mechanical MBE / WBE	636 345-1564	Bert@CNTmechanical.com
Fred Hof	RAVEN LLC G.C.	314-960-2105	RAVENLLCSTL@GMAIL.COM
Adam Bilous	IFS-HVAC	314-712-1949	ABilous@intfscan.com
Joe Pirotski	Painting Solutions	(314) 997-6573	joe@paintingsolutionsstl.com

Pre-Bid Meeting Attendance Sheet  
 Interior Remodel  
 St. Louis County Regional State Office Building  
 Chesterfield, Missouri

Project No. 02521-01  
 February 19, 2025 11:00am

Name & Title	Company Name, Type of Contracting, MBE/WBE/SDVE Status	Phone	E-Mail Address
MIKE RIEHL DIR. OF FRECON	RAINER1 CONST GC WBE	314-667-5913	mriehl@rainerconstruction.com
DAN WENST ESTIMATOR/PM	CENTURY FIRE SPRINKLERS	314-324-5050	dwenst@centuryfire.com
Tim Payne Superintendent	Clay Piping Systems	636-368-7951	TPayne@CPB.com
Steve Wennembers Vice President	CFC Group - Controls	(314) 291-8800	swennembers@CFCgroup.com
Caleb Currie Account manager	Sarnell Mech. 'HVAC Pumps Controls	314-967-9911	caleb.currie@sarnell.com
John Cannon PM	Cannon CP Paint wallcovering taping	314 475 0333	jgannon@cannoncp.com



Pre-Bid Meeting Attendance Sheet  
 Interior Remodel  
 St. Louis County Regional State Office Building  
 Chesterfield, Missouri

Project No. 02521-01  
 February 19, 2025 11:00am

Name & Title	Company Name, Type of Contracting, MBE/WBE/SDVE Status	Phone	E-Mail Address
James Wechter Estimator/Project Man	Wechter Plumbing	314-608-8883	James@jwachterplumbing.com
Mike Dixon P/M	GBI Drywall	636-484-0043	miked@littmansickbrothers.com
Colin Greene PM	WRIGHT CONSTRUCTION	636-220-6850	BID@WRIGHTCONSTRUCT.COM
Jason MADIES PM	MEYER CONSTRUCTION SERVICE (SUB)	636-262-5047	jason@meyerconstruct.com
Mark Bevrk PM	Marshall Welding	314-578-6898	Mark@marshallwelding.com
Elijah Holt PM	Sckelkamp Electric	636-239-4795	Elijah@sckelkampelectric.com

Pre-Bid Meeting Attendance Sheet  
 Interior Remodel  
 St. Louis County Regional State Office Building  
 Chesterfield, Missouri

Project No. 02521-01  
 February 19, 2025 11:00am

Name & Title	Company Name, Type of Contracting, MBE/WBE/SDVE Status	Phone	E-Mail Address
DAVE Costello	EOI	314-668-0362	davidc@environmentalops.com
Vince Labber	EOI	314-915-2256	Vince@environmentalops.com
Matalie Hughes	GMT	314-688-4932	hmmassanraj@contractors@gmail.com

## SECTION 000115 – LIST OF DRAWINGS

### PART 1 - GENERAL

#### 1.1 RELATED DOCUMENTS

- A. Drawings and general provisions of the Contract including General and Supplementary Conditions, Bid Form, and other Division 1 Specification Sections apply to this Section.

#### 1.2 SUMMARY

- A. This Section provides a comprehensive list of the drawings that comprise the Bid Documents for this project.

### PART 2 - PRODUCTS (NOT APPLICABLE)

### PART 3 - EXECUTION

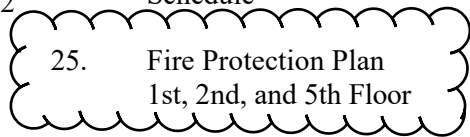
#### 3.1 LIST OF DRAWINGS

- A. The following list of drawings is a part of the Bid Documents:

	<u>TITLE</u>	<u>SHEET #</u>	<u>DATE</u>	<u>CAD #</u>
1.	Cover Sheet	Sheet G-001	11/07/24	G-001.dwg
2.	Drawing Index, General Notes, and Site Maps	Sheet G-002	11/07/24	G-002.dwg
3.	First Floor Renovation Plan	Sheet A-101	11/07/24	A-101.dwg
4.	Second Floor Renovation Plan	Sheet A-102	11/07/24	A-102.dwg
5.	Fourth Floor Renovation Plan	Sheet A-104	11/07/24	A-104.dwg
6.	Fifth Floor Renovation Plan	Sheet A-105	11/07/24	A-105.dwg
7.	First Floor Reflected Ceiling Plan	Sheet A-106	11/07/24	A-106.dwg
8.	Fifth Floor Reflected Ceiling Plan	Sheet A-107	11/07/24	A-107.dwg
9.	Partition Details	Sheet A-500	11/07/24	A-500.dwg
10.	Details and Elevations	Sheet A-501	11/07/24	A-501.dwg
11.	Door Details	Sheet A-502	11/07/24	A-502.dwg
12.	First, Second and Fourth Floor Door Schedules	Sheet A-503	11/07/24	A-503.dwg
13.	Fifth Floor Door Schedule	Sheet A-504	11/07/24	A-504.dwg

14.	First Floor New Work Plan & Demo Work Plans	Sheet I-101	11/07/24	I-101.dwg
15.	Second Floor New Work Plan & Demo Work Plans	Sheet I-102	11/07/24	I-102.dwg
16.	Fourth Floor New Work Plan	Sheet I-104	11/07/24	I-104.dwg
17.	Fifth Floor New Work Plan	Sheet I-105	11/07/24	I-105.dwg
18.	Cabinet Elevations & Sections	Sheet I-201	11/07/24	I-201.dwg
19.	Cabinet Elevations & Sections	Sheet I-202	11/07/24	I-202.dwg
20.	Cabinet Elevations & Sections	Sheet I-203	11/07/24	I-203.dwg
21.	Cabinet Elevations & Sections	Sheet I-204	11/07/24	I-204.dwg
22.	1 <sup>st</sup> , 2 <sup>nd</sup> , & 4 <sup>th</sup> Floor Enlarged Systems Furniture Plan	Sheet I-401	11/07/24	I-401.dwg
23.	Fifth Floor Enlarged Systems Furniture Plan	Sheet I-402	11/07/24	I-402.dwg
24.	Room Finish & Equipment Schedule	Sheet I-601	11/07/24	I-601.dwg
25.	Fire Protection Plan 1 <sup>st</sup> , 2 <sup>nd</sup> , and 5 <sup>th</sup> Floor	Sheet F-101	11/07/24	F-101.dwg
26.	Fire Protection Plan 5 <sup>th</sup> Floor	Sheet F-102	11/07/24	F-102.dwg
27.	Plumbing Demolition Plan 2 <sup>nd</sup> Floor	Sheet PD-101	11/07/24	PD-101.dwg
28.	Plumbing Demolition Plan 5 <sup>th</sup> Floor	Sheet PD-102	11/07/24	PD-102.dwg
29.	Plumbing Renovation Plan 1 <sup>st</sup> Floor	Sheet P-101	11/07/24	P-101.dwg
30.	Plumbing Renovation Plan 2 <sup>nd</sup> Floor	Sheet P-102	11/07/24	P-102.dwg
31.	Plumbing Renovation Plan 5 <sup>th</sup> Floor	Sheet P-103	11/07/24	P-103.dwg
32.	Plumbing Schedules and Details	Sheet P-601	11/07/24	P-601.dwg
33.	Mechanical Demolition Plan 1 <sup>st</sup> Floor	Sheet MD-101	11/07/24	MD-101.dwg

ADDENDUM NO.2  
2-20-2025



34.	Mechanical Demolition Plan 2 <sup>nd</sup> and 4 <sup>th</sup> Floor	Sheet MD-102	11/07/24	MD-102.dwg
35.	Mechanical Demolition Plan 5 <sup>th</sup> Floor	Sheet MD-103	11/07/24	MD-102.dwg
36.	Mechanical Renovation Plan 1 <sup>st</sup> Floor	Sheet M-101	11/07/24	M-101.dwg
37.	Mechanical Renovation Plan 1 <sup>st</sup> Floor	Sheet M-102	11/07/24	M-102.dwg
38.	Mechanical Renovation Plan	Sheet M-103	11/07/24	M-103.dwg
39.	Mechanical Schedules and Details	Sheet M-601	11/07/24	M-601.dwg
40.	Electrical Demolition Plan 1 <sup>st</sup> Floor	Sheet ED-101	11/07/24	ED-101.dwg
41.	Electrical Demolition Plan 2 <sup>nd</sup> Floor	Sheet ED-102	11/07/24	ED-102.dwg
42.	Electrical Demolition Plan 4 <sup>th</sup> Floor	Sheet ED-103	11/07/24	ED-103.dwg
43.	Electrical Demolition Plan 5 <sup>th</sup> Floor	Sheet ED-104	11/07/24	ED-104.dwg
44.	Electrical Power Renovation Plan 1 <sup>st</sup> Floor	Sheet E-101	11/07/24	E-101.dwg
45.	Lighting Renovation Plan 1 <sup>st</sup> Floor	Sheet E-102	11/07/24	E-102.dwg
46.	Electrical Renovation Plan 2 <sup>nd</sup> Floor	Sheet E-103	11/07/24	E-103.dwg
47.	Electrical Renovation Plan 4 <sup>th</sup> Floor	Sheet E-104	11/07/24	E-104.dwg
48.	Electrical Power Renovation Plan 5 <sup>th</sup> Floor	Sheet E-105	11/07/24	E-105.dwg
49.	Lighting Renovation Plan 5 <sup>th</sup> Floor	Sheet E-106	11/07/24	E-106.dwg
50.	Electrical Schedules and Details	Sheet E-601	11/07/24	E-601.dwg

**END OF SECTION 000115**



Tracie L. Siebeneck - Engineer  
MO# PE-2013019114

**BID  
DOCUMENTS**

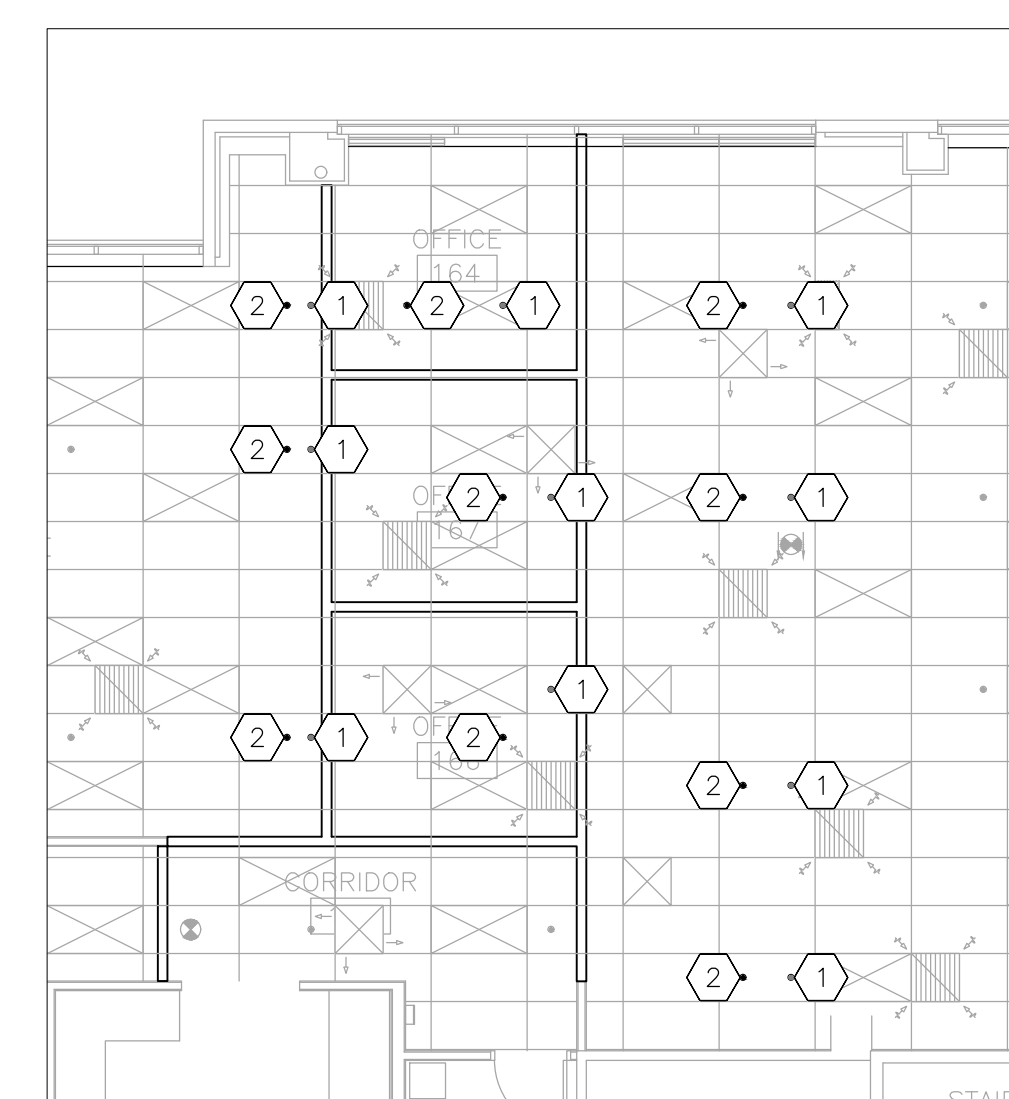
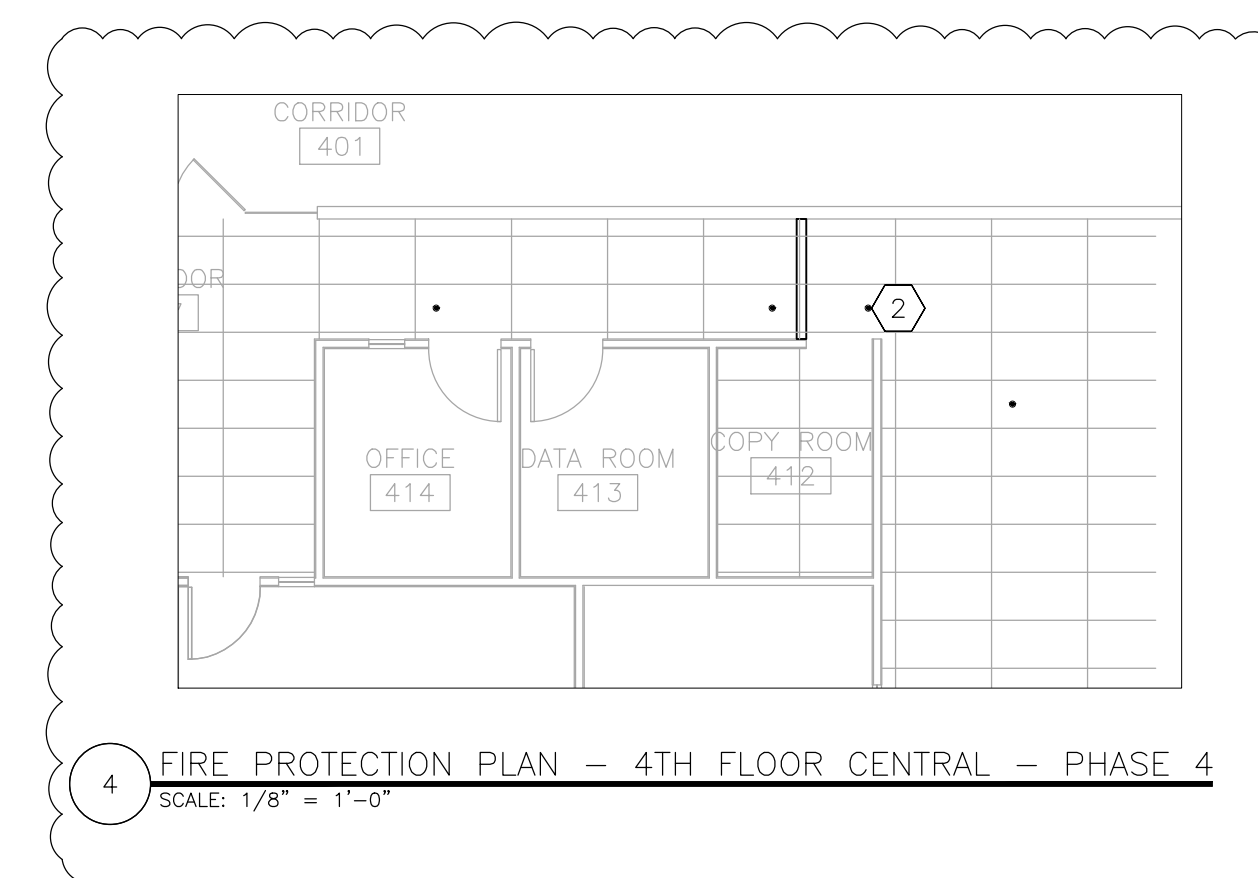
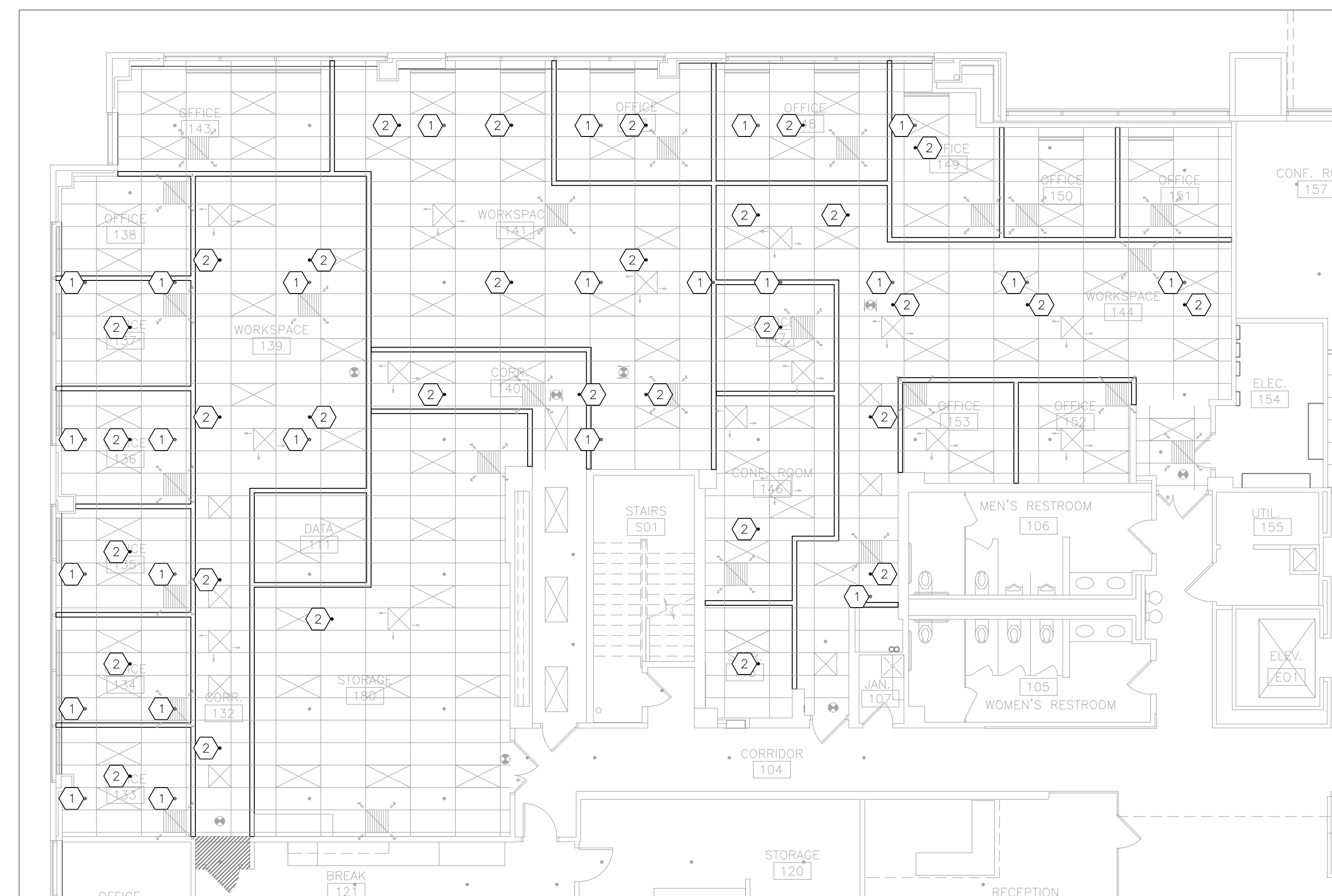
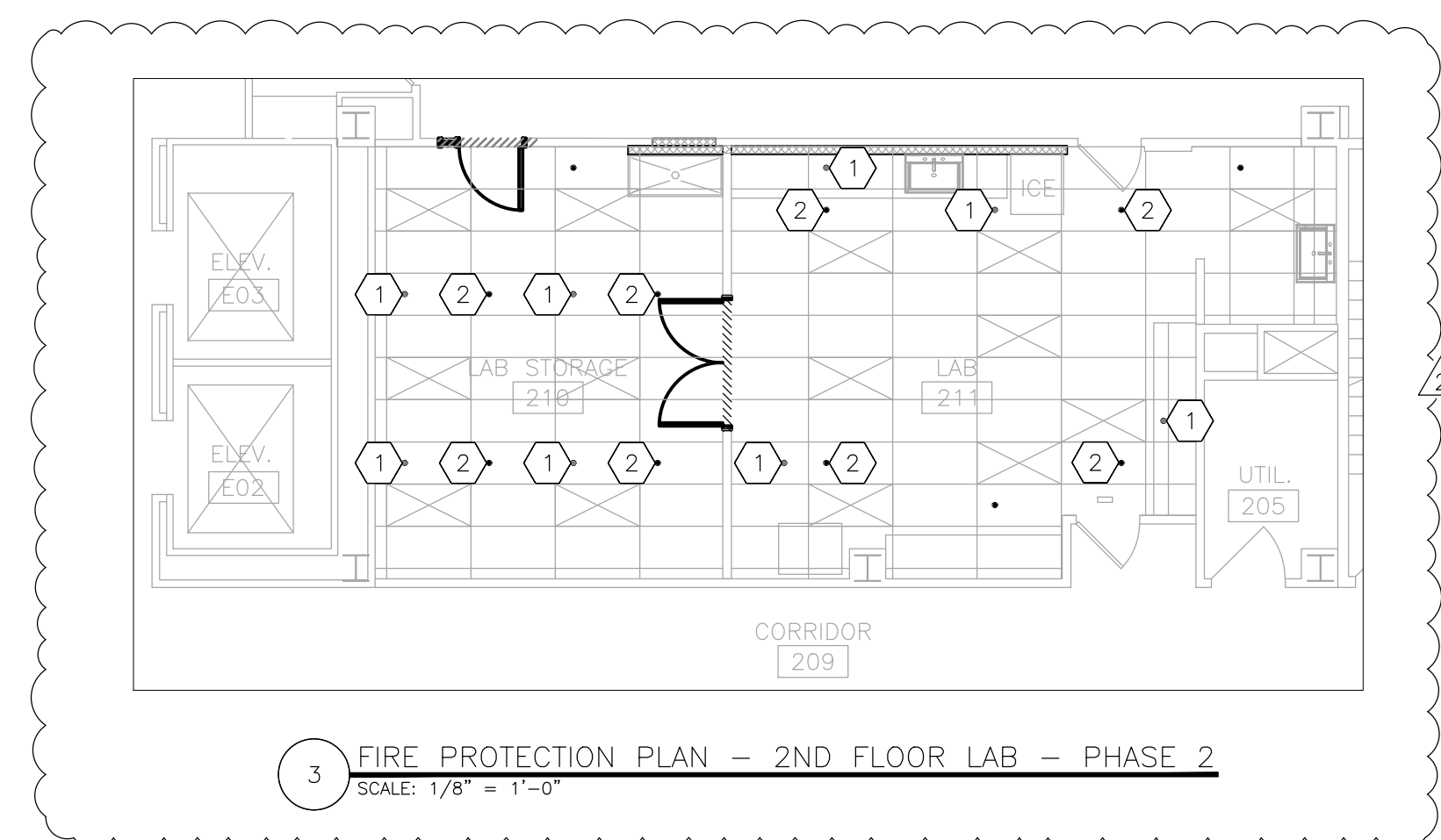
**GENERAL FIRE PROTECTION NOTES**

- 1 FABRICATION, INSTALLATION, AND TESTING OF ALL FIRE PROTECTION DEVICES SHALL BE DONE IN ACCORDANCE WITH THE LATEST VERSION OF THE NATIONAL FIRE PROTECTION ASSOCIATION'S STANDARD FROM THE INSTALLATION OF SPRINKLER SYSTEMS (NFPA-13), NATIONAL ELECTRIC CODE (NEC) AND ALL MANUFACTURER INSTALLATION GUIDELINES.
- 2 DRAWINGS AND PLANS ARE FROM FIELD TAKE-OFF AND ORIGINAL DRAWINGS. CONTRACTOR IS RESPONSIBLE FOR FIELD VERIFYING PRIOR TO BIDDING AND/OR CONSTRUCTION.
- 3 CONTRACTOR IS RESPONSIBLE FOR REMOVAL AND DISPOSAL OF ALL DEMOLISHED MATERIAL, AS WELL AS REPAIRING ANY DAMAGE TO ANY SURFACE IN THE AREA OF CONSTRUCTION THAT IS A RESULT OF CONSTRUCTION ACTIVITY. SURFACE SHALL BE REPAIRED AND FINISHED TO MATCH EXISTING CONDITIONS.
- 4 COORDINATE WITH OWNER TO SHUT OFF FIRE ALARMS AND FIRE SUPPRESSION SYSTEM IN WORK AREA PRIOR TO BEGINNING CONSTRUCTION. CONSTRUCTION SHALL BE DONE SUCH THAT THE FIRE ALARM AND FIRE SUPPRESSION SYSTEMS ARE ACTIVE OVERNIGHT.
- 5 DELEGATED DESIGN: LOCATION OF NEW SPRINKLER HEADS ARE FOR REFERENCE ONLY. FIRE PROTECTION CONTRACTOR IS RESPONSIBLE FOR DESIGNING AND PROVIDING COMPLETE, FUNCTIONAL, AND CODE COMPLIANT SYSTEM.

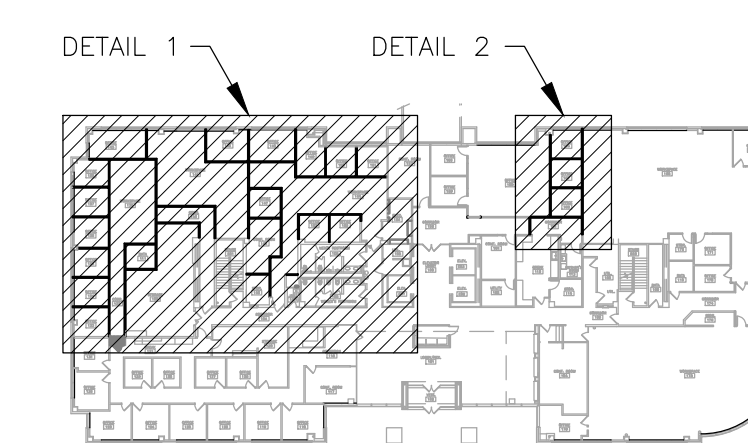
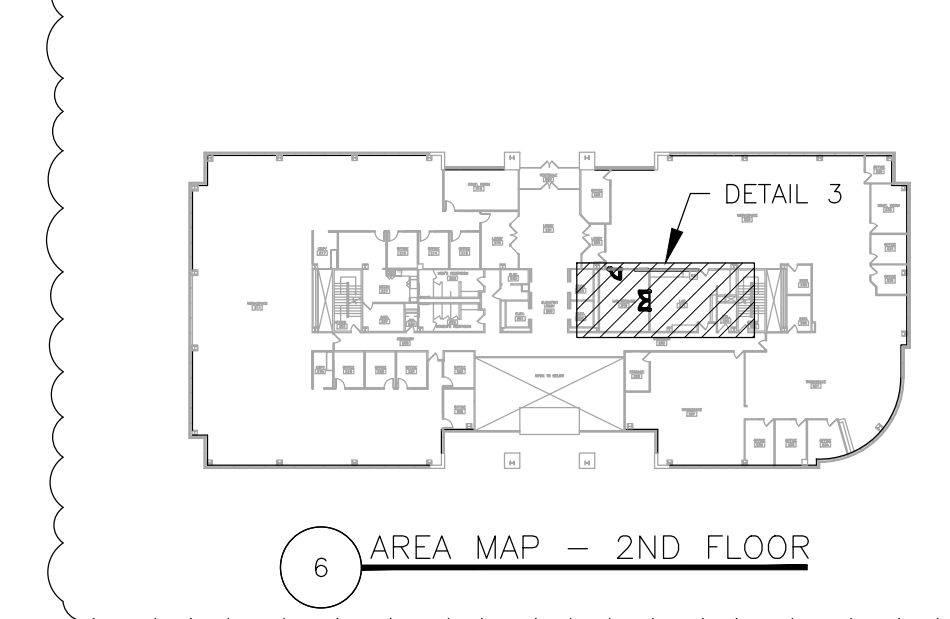
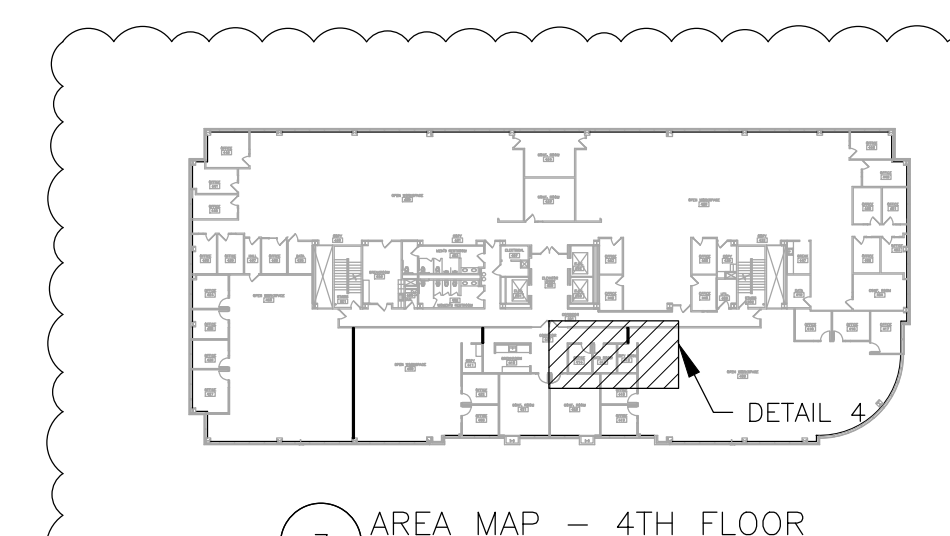
**FIRE PROTECTION NOTES**

# INDICATES KEYED NOTES

- 1 DEMOLISH PENDENT TYPE FIRE SPRINKLER HEAD, CAP PIPE WHERE HEAD IS REMOVED OR EXTEND PIPE TO NEW SPRINKLER HEAD LOCATION AS NEEDED. IF PIPE NO LONGER SERVES A SPRINKLER HEAD, REMOVE PIPE AND ALL ASSOCIATED HANGERS BACK TO MAIN AND CAP AT MAIN.
- 2 PROVIDE AND INSTALL NEW PENDENT TYPE FIRE SPRINKLER HEAD, ESCUTCHEON AND ALL REQUIRED PIPE. ALL MATERIALS SHALL MATCH EXISTING FINISH AND PERFORMANCE.



FIRE PROTECTION LEGEND	
	PENDENT FIRE SPRINKLER HEAD/ESCUTCHEON
	PENDENT FIRE SPRINKLER TO BE REMOVED



OFFICE OF ADMINISTRATION  
DIVISION OF FACILITIES  
MANAGEMENT,  
DESIGN AND CONSTRUCTION

DEPARTMENT OF  
OFFICE OF ADMINISTRATION

INTERIOR REMODEL  
ST. LOUIS COUNTY  
REGIONAL STATE OFFICE  
BUILDING

1390 TIMBERLAKE MANOR  
PKWY  
CHESTERFIELD, MO 63017

PROJECT # O2521-01  
SITE #  
ASSET #

REVISION: ADDENDUM NO. 2  
DATE: 02/20/2025  
REVISION:  
DATE:  
REVISION:  
DATE:  
ISSUE DATE: 11/7/2024

CAD DWG FILE:  
DRAWN BY:  
CHECKED BY:  
DESIGNED BY:

SHEET TITLE:  
**FIRE PROTECTION  
PLAN - 1ST, 2ND,  
AND 4TH FLOOR**

SHEET NUMBER:

**F-101**

25 OF 50 SHEETS  
11/7/2024