

## ADDENDUM NO. 2

**TO: PLANS AND SPECIFICATIONS FOR STATE OF MISSOURI**

**Construct Fitness Center  
Ike Skelton Training Site  
Jefferson City, Missouri  
PROJECT NO.: T2041-01**

**Bid Opening Date: 1:30 PM, Thursday, August 25, 2022 (Not Changed)**

**Bidders are hereby informed that the construction Plans and/or Specifications are modified as follows:**

### **SPECIFICATION CHANGES:**

#### **1. Section 087100 Door Hardware**

**ADD Paragraph 2.9 Door Operators**

#### **2.9 DOOR OPERATORS**

- A. Manufacturers:
  - 1. Scheduled Manufacturer and Product: LCN 9140 Benchmark Series.
  - 2. Acceptable Manufacturers: Record 8100 Series, Stanley Access Technologies M-Force Series.
- B. Requirements:
  - 1. Provide low-energy electro-mechanical automatic operators for single doors conforming to BHMA A156.19 Grade 1 requirements.
  - 2. Provide necessary power supplies, relays, and interfaces as required for proper operation; provide wiring between control components and to building power connection in compliance with NFPA 70.
  - 3. Comply with ADA standards for egress requirements.
  - 4. Provide units capable of operating, closing, and holding doors closed under positive and negative differential pressure; if necessary, provide power closing.
  - 5. Integrate operator functionality with other systems as required for a complete working installation.
    - a. Provide time delay relay to signal automatic door operator to activate only after electric lock system is released.
    - b. Provide controller output signals at the door closed or door open positions to facilitate interaction with security and access control systems.
  - 6. Speed Control: Variable, field-adjustable opening and closing cycles.
  - 7. Functionality: Low-energy power open, spring close operation.
  - 8. Mounting: Surface mounted, push side.
  - 9. Actuators:
    - a. Push-Side Actuator: Motion Sensor.
    - b. Pull-Side Actuator: Push Plate.

**REVISE** Door Hardware Set #02 to have (1) surface closer in lieu of (2)

**ADD** Door Operator to Door Hardware Set #02

**REVISE** Door Hardware Set #02 to have with LCN Touchless Actuator Switch in lieu of Essex Touchless Auto Operator

2. Section 096450 Resilient Athletic Flooring

**ADD** Paragraph 2.1, B, 3: AktivLok by Regupol

3. Section 133419 Metal Building Systems

**ADD** Paragraph 2.1, A, 4: Alliance Steel: Wall Panel – AW-16 Panel, Roof Panel – AS-24 Panel

**REPLACE** Existing paragraph 2.10 Face-Applied Horizontal Accent Metal Wall Panels with the following:

2.10 Face-Applied Vertical Accent Metal Wall Panels

A. Fluted Profile, Concealed-Fastener Metal Wall Panels: Structural metal panels consisting of formed metal sheet with vertical panel edges and tapered inverted intermediate rib 5-1/2 by 1-1/2 inches (140 by 38 mm), with flush joints between panels, field assembled with nested lapped edges, and attached to supports using concealed fasteners. Provide top, bottom and outside corner matching metal trim.

1. Material: Zinc-coated (galvanized) steel sheet, 24 gauge.
  - a. Exterior Finish: Fluoropolymer two-coat system.
  - b. Surface: Smooth.
  - c. Color 1 (Wainscot): As selected by Architect from manufacturer's full range.
  - d. Color 2 (Above wainscoting): As selected by Architect from manufacturer's full range.
2. Panel Coverage: 16 inches.
3. Panel Height: 3 inches.

4. Section 260500 Common Work Results for Electrical

**ADD** Paragraph 1.2 J: Contractor shall be responsible for all electrical utility charges associated with the installation of the new electrical service as well as any use charges up to the point of substantial completion.

**DRAWING CHANGES:**

1. Sheet CD101

**ADD** Elevation tags added to existing grade contour lines.

2. Sheet C101

**REVISE** Location of fiber optic handhole moved from northeast of proposed building project to the northwest side of project.

**REVISE** Location electrical metering equipment from the south side of building to the east side.

3. Sheet C102

**REVISE** Location of fiber optic handhole moved from northeast of proposed building project to the northwest side of project.

**REVISE** Location electrical metering equipment from the south side of building to the east side.

**ADD** Note requiring contractor to pull fiber optic cable from handhole to the mechanical room. Fiber optic cable provided within separate project.

**ADD** Note the following note to the underground telephone service: "2" conduit with pull string by contractor. Telephone Cable installation by others under separate contract."

4. Sheet P601

**REVISE** Domestic Circulating Pump Schedule approved manufacturer model from Grundfos ALPHA1 15-55F to Grundfos ALPHA1 15-55SF

5. Sheet E501

**REVISE** Electrical One-Line Diagram to include the following notes identifying the scope of responsibility:

Primary Conduit- Provided/Installed by Contractor

Primary Conductors- Provided/Installed by Utility

Transformer Pad- Provided/Installed by Contractor

Transformer- Provided/Installed by Utility

CT Cabinet- Provided/Installed by Contractor

Meter Cabinet- Provided/Installed by Contractor

Meter- Provided/Installed by Utility

Wire and conduit from Transformer to Panel- Provided/Installed by Contractor

**GENERAL COMMENTS:**

1. It is understood that material procurement delays are probable. The State of Missouri and OA-FMDC will work with the awarded contractor to issue a no cost time extension based on the expected delivery of required materials. In order for extension to be issued, submittals will need to be received/approved in timely manner and the contractor must provide documentation from manufacturers showing the delivery date of material.

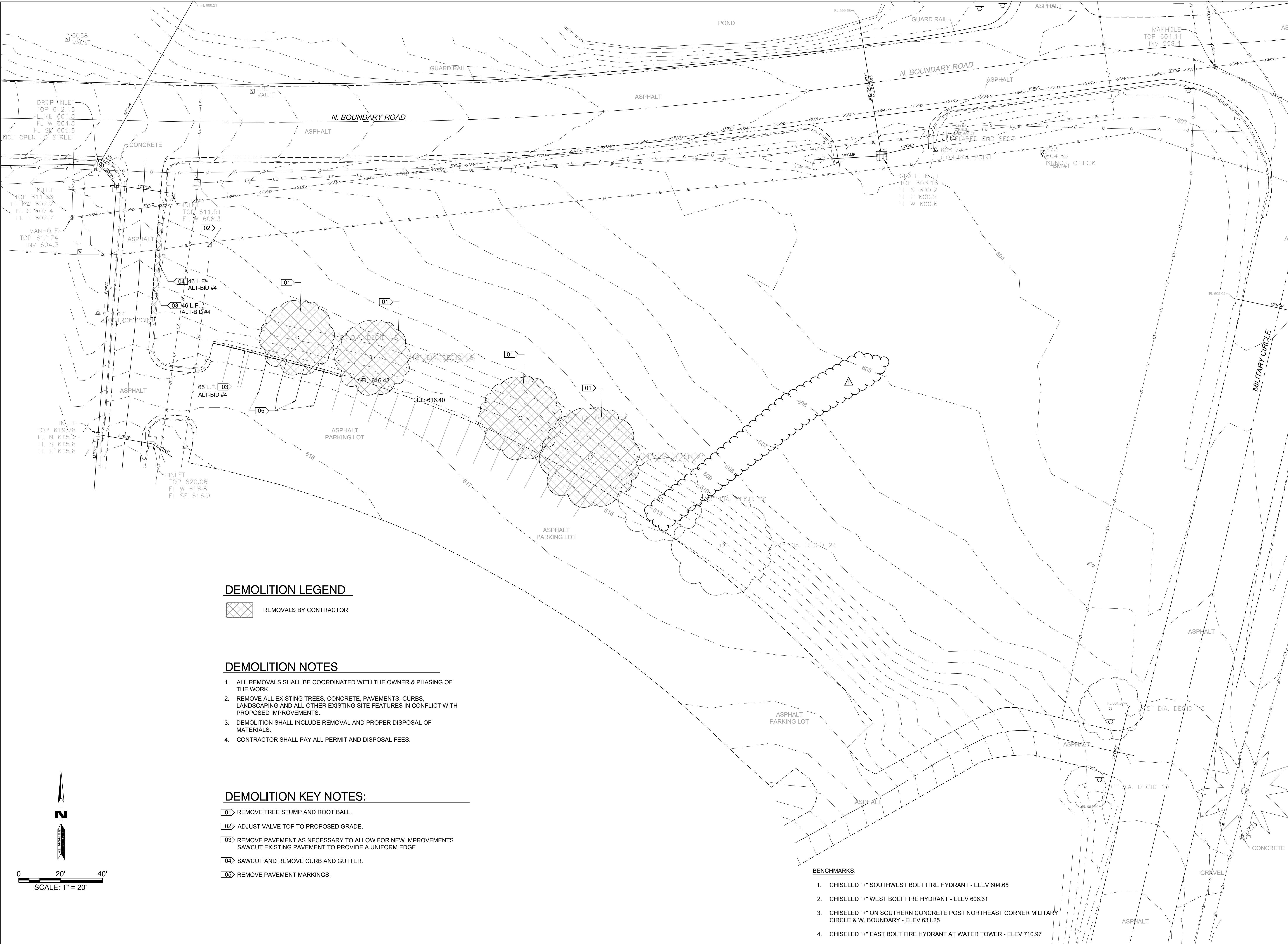
**ATTACHMENTS:**

1. Sheet CD101, Existing Conditions & Site Demo Plan
2. Sheet C101, Site Plan
3. Sheet C102, Site Utility Plan
4. Sheet E501, Electrical Details

**August 18, 2022**

**END ADDENDUM NO. 2**





DEMOLITION LEGEND

REMOVALS BY CONTRACTOR

DEMOLITION NOTES

- ALL REMOVALS SHALL BE COORDINATED WITH THE OWNER & PHASING OF THE WORK.
- REMOVE ALL EXISTING TREES, CONCRETE, PAVEMENTS, CURBS, LANDSCAPING AND ALL OTHER EXISTING SITE FEATURES IN CONFLICT WITH PROPOSED IMPROVEMENTS.
- DEMOLITION SHALL INCLUDE REMOVAL AND PROPER DISPOSAL OF MATERIALS.
- CONTRACTOR SHALL PAY ALL PERMIT AND DISPOSAL FEES.

DEMOLITION KEY NOTES:

- 01 REMOVE TREE STUMP AND ROOT BALL.
- 02 ADJUST VALVE TOP TO PROPOSED GRADE.
- 03 REMOVE PAVEMENT AS NECESSARY TO ALLOW FOR NEW IMPROVEMENTS. SAWCUT EXISTING PAVEMENT TO PROVIDE A UNIFORM EDGE.
- 04 SAWCUT AND REMOVE CURB AND GUTTER.
- 05 REMOVE PAVEMENT MARKINGS.

BENCHMARKS:

- CHISELED "\*" SOUTHWEST BOLT FIRE HYDRANT - ELEV 604.65
- CHISELED "\*" WEST BOLT FIRE HYDRANT - ELEV 606.31
- CHISELED "\*" ON SOUTHERN CONCRETE POST NORTHEAST CORNER MILITARY CIRCLE & W. BOUNDARY - ELEV 631.25
- CHISELED "\*" EAST BOLT FIRE HYDRANT AT WATER TOWER - ELEV 710.97

STATE OF MISSOURI  
MICHAEL L. PARSON,  
GOVERNOR



CURT WAVERING - ENGINEER  
MO # PE-2011009046

**KLINGNER**  
& ASSOCIATES, P.C.

Engineers • Architects • Surveyors

www.klingner.com

Quincy, IL, Galveston, IL

Burlington, IA, Peoria, IL, Hannibal, MO

KLINGNER & ASSOCIATES, P.C. - ENGINEERING  
MISSOURI STATE CERTIFICATE OF AUTHORITY #000866

OFFICE OF ADMINISTRATION  
DIVISION OF FACILITIES  
MANAGEMENT,  
DESIGN AND CONSTRUCTION

CONSTRUCT NEW  
FITNESS CENTER

IKE SKELTON TRAINING  
SITE

7001 RANGE ROAD  
JEFFERSON CITY, MO 65101

PROJECT # T2041-01  
SITE # 6300  
ASSET # 8136300040

REVISION: ADDENDUM #2

DATE: 08/18/2022

REVISION: DATE:

REVISION: DATE:

REVISION: DATE:

ISSUE DATE: 07/22/2022

CAD DWG FILE: CD101

DRAWING BY: DCD

CHECKED BY: CSW

DESIGNED BY: DCD

SHEET TITLE:

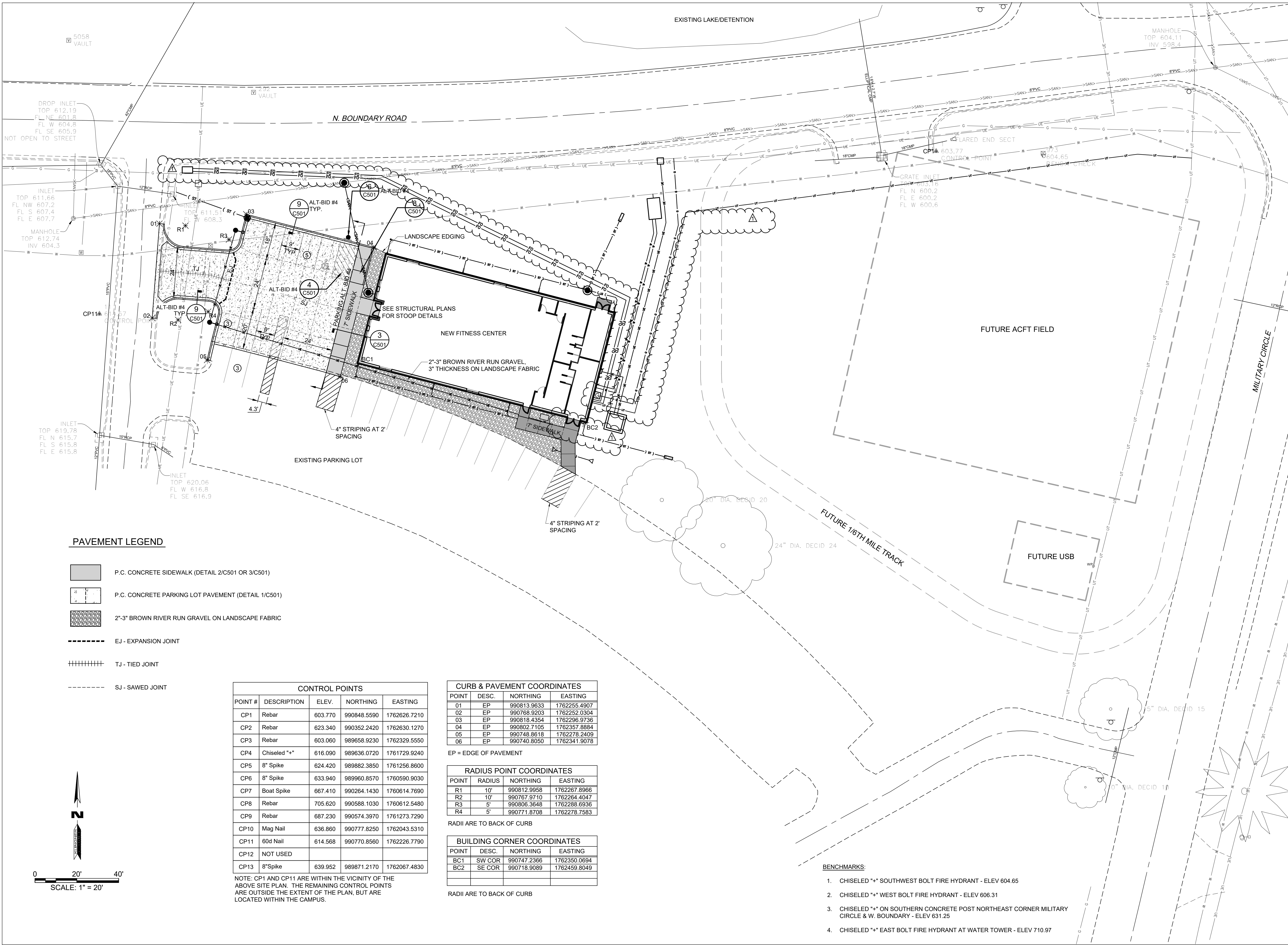
EXISTING  
CONDITIONS &  
SITE DEMO PLAN

SHEET NUMBER:

CD101

JULY 29, 2022





PAVEMENT LEGEND

- P.C. CONCRETE SIDEWALK (DETAIL 2/C501 OR 3/C501)
- P.C. CONCRETE PARKING LOT PAVEMENT (DETAIL 1/C501)
- 2"-3" BROWN RIVER RUN GRAVEL ON LANDSCAPE FABRIC
- EJ - EXPANSION JOINT
- TJ - TIED JOINT
- SJ - SAWED JOINT

CONTROL POINTS				
POINT #	DESCRIPTION	ELEV.	NORTHING	EASTING
CP1	Rebar	603.770	990848.5590	1762626.7210
CP2	Rebar	623.340	990352.2420	1762630.1270
CP3	Rebar	603.060	989658.9230	1762329.5550
CP4	Chiseled **	616.090	989636.0720	1761729.9240
CP5	8" Spike	624.420	989882.3850	1761256.8600
CP6	8" Spike	633.940	989960.8570	1760590.9030
CP7	Boat Spike	667.410	990264.1430	1760614.7690
CP8	Rebar	705.620	990588.1030	1760612.5480
CP9	Rebar	687.230	990574.3970	1761273.7290
CP10	Mag Nail	636.860	990777.8250	1762043.5310
CP11	60d Nail	614.568	990770.8560	1762226.7790
CP12	NOT USED			
CP13	8"Spike	639.952	989871.2170	1762067.4830

NOTE: CP1 AND CP11 ARE WITHIN THE VICINITY OF THE ABOVE SITE PLAN. THE REMAINING CONTROL POINTS ARE OUTSIDE THE EXTENT OF THE PLAN, BUT ARE LOCATED WITHIN THE CAMPUS.

CURB & PAVEMENT COORDINATES			
POINT	DESC.	NORTHING	EASTING
01	EP	990813.9633	1762255.4907
02	EP	990768.9203	1762252.0304
03	EP	990818.4354	1762296.9736
04	EP	990802.7105	1762357.8884
05	EP	990748.8618	1762278.2409
06	EP	990740.8050	1762341.9078

EP = EDGE OF PAVEMENT

RADIUS POINT COORDINATES			
POINT	RADIUS	NORTHING	EASTING
R1	10'	990812.9958	1762267.8966
R2	10'	990767.9710	1762264.4047
R3	5'	990806.3648	1762286.6936
R4	5'	990771.8708	1762278.7583

RADII ARE TO BACK OF CURB

BUILDING CORNER COORDINATES			
POINT	DESC.	NORTHING	EASTING
BC1	SW COR	990747.2366	1762350.0694
BC2	SE COR	990718.9089	1762459.8049

RADII ARE TO BACK OF CURB

BENCHMARKS:

- CHISELED \*\* SOUTHWEST BOLT FIRE HYDRANT - ELEV 604.65
- CHISELED \*\* WEST BOLT FIRE HYDRANT - ELEV 606.31
- CHISELED \*\* ON SOUTHERN CONCRETE POST NORTHEAST CORNER MILITARY CIRCLE & W. BOUNDARY - ELEV 631.25
- CHISELED \*\* EAST BOLT FIRE HYDRANT AT WATER TOWER - ELEV 710.97

STATE OF MISSOURI  
MICHAEL L. PARSON,  
GOVERNOR



CURT WAVERING - ENGINEER  
MO # PE-2011009046

**KLINGNER & ASSOCIATES, P.C.**  
Engineers • Architects • Surveyors  
Columbia, Missouri  
907 East Ash Street  
Burlington, IA 50888

www.klingner.com  
Quincy, IL 61801  
Burlington, IA 50888  
KLINGNER & ASSOCIATES, P.C. - ENGINEERING  
MISSOURI STATE CERTIFICATE OF AUTHORITY #000866

OFFICE OF ADMINISTRATION  
DIVISION OF FACILITIES  
MANAGEMENT,  
DESIGN AND CONSTRUCTION

CONSTRUCT NEW  
FITNESS CENTER

IKE SKELTON TRAINING  
SITE

7001 RANGE ROAD  
JEFFERSON CITY, MO 65101

PROJECT # T2041-01  
SITE # 6300  
ASSET # 8136300040

REVISION: ADDENDUM #2  
DATE: 08/18/2022  
REVISION: \_\_\_\_\_  
DATE: \_\_\_\_\_  
REVISION: \_\_\_\_\_  
DATE: \_\_\_\_\_  
ISSUE DATE: 07/22/2022

CAD DWG FILE: C101  
DRAWING BY: DCD  
CHECKED BY: CSW  
DESIGNED BY: DCD

SHEET TITLE:

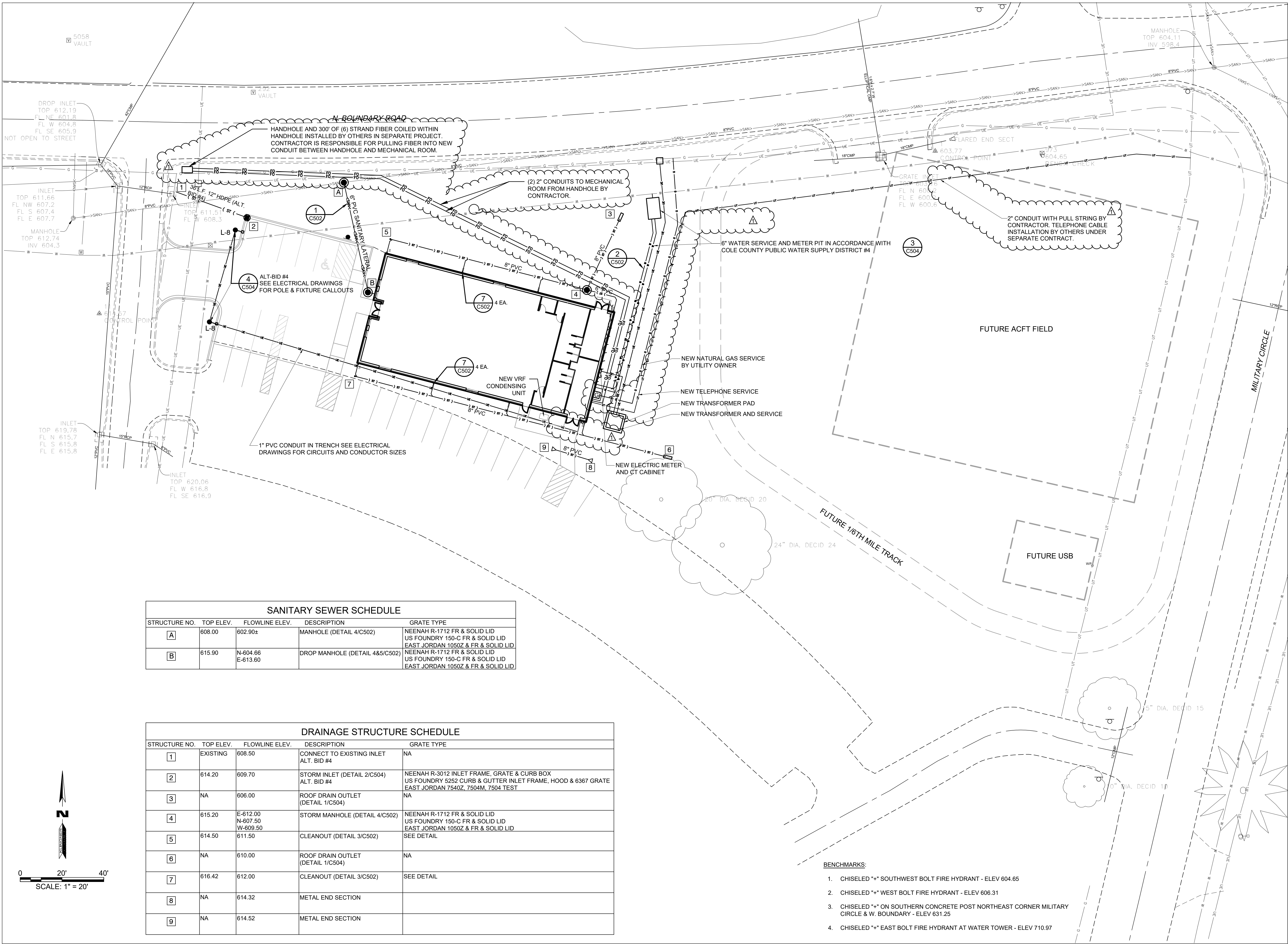
**SITE PLAN**

SHEET NUMBER:

**C101**

JULY 29, 2022





SANITARY SEWER SCHEDULE				
STRUCTURE NO.	TOP ELEV.	FLOWLINE ELEV.	DESCRIPTION	GRATE TYPE
A	608.00	602.90±	MANHOLE (DETAIL 4/C502)	NEENAH R-1712 FR & SOLID LID US FOUNDRY 150-C FR & SOLID LID EAST JORDAN 1050Z & FR & SOLID LID
B	615.90	N-604.66 E-613.60	DROP MANHOLE (DETAIL 4&5/C502)	NEENAH R-1712 FR & SOLID LID US FOUNDRY 150-C FR & SOLID LID EAST JORDAN 1050Z & FR & SOLID LID

DRAINAGE STRUCTURE SCHEDULE				
STRUCTURE NO.	TOP ELEV.	FLOWLINE ELEV.	DESCRIPTION	GRATE TYPE
1	EXISTING	608.50	CONNECT TO EXISTING INLET ALT. BID #4	NA
2	614.20	609.70	STORM INLET (DETAIL 2/C504) ALT. BID #4	NEENAH R-3012 INLET FRAME, GRATE & CURB BOX US FOUNDRY 5252 CURB & GUTTER INLET FRAME, HOOD & 6367 GRATE EAST JORDAN 7540Z, 7504M, 7504 TEST
3	NA	606.00	ROOF DRAIN OUTLET (DETAIL 1/C504)	NA
4	615.20	E-612.00 N-607.50 W-609.50	STORM MANHOLE (DETAIL 4/C502)	NEENAH R-1712 FR & SOLID LID US FOUNDRY 150-C FR & SOLID LID EAST JORDAN 1050Z & FR & SOLID LID
5	614.50	611.50	CLEANOUT (DETAIL 3/C502)	SEE DETAIL
6	NA	610.00	ROOF DRAIN OUTLET (DETAIL 1/C504)	NA
7	616.42	612.00	CLEANOUT (DETAIL 3/C502)	SEE DETAIL
8	NA	614.32	METAL END SECTION	
9	NA	614.52	METAL END SECTION	

BENCHMARKS:

- CHISELED "+\*" SOUTHWEST BOLT FIRE HYDRANT - ELEV 604.65
- CHISELED "+\*" WEST BOLT FIRE HYDRANT - ELEV 606.31
- CHISELED "+\*" ON SOUTHERN CONCRETE POST NORTHEAST CORNER MILITARY CIRCLE & W. BOUNDARY - ELEV 631.25
- CHISELED "+\*" EAST BOLT FIRE HYDRANT AT WATER TOWER - ELEV 710.97

STATE OF MISSOURI  
MICHAEL L. PARSON,  
GOVERNOR



CURT WAVERING - ENGINEER  
MO # PE-2011009046

**KLINGNER**  
& ASSOCIATES, P.C.

Engineers • Architects • Surveyors

Columbia, Missouri

907 East Ash Street  
Burlington, IA 50888

KLINGNER & ASSOCIATES, P.C. - ENGINEERING  
MISSOURI STATE CERTIFICATE OF AUTHORITY #000866

OFFICE OF ADMINISTRATION  
DIVISION OF FACILITIES  
MANAGEMENT,  
DESIGN AND CONSTRUCTION

CONSTRUCT NEW  
FITNESS CENTER

IKE SKELTON TRAINING  
SITE

7001 RANGE ROAD  
JEFFERSON CITY, MO 65101

PROJECT # T2041-01  
SITE # 6300  
ASSET # 8136300040

REVISION: ADDENDUM #2  
DATE: 08/18/2022  
REVISION: \_\_\_\_\_  
DATE: \_\_\_\_\_  
REVISION: \_\_\_\_\_  
DATE: \_\_\_\_\_  
ISSUE DATE: 07/22/2022

CAD DWG FILE: C102  
DRAWING BY: DCD  
CHECKED BY: CSW  
DESIGNED BY: DCD

SHEET TITLE:

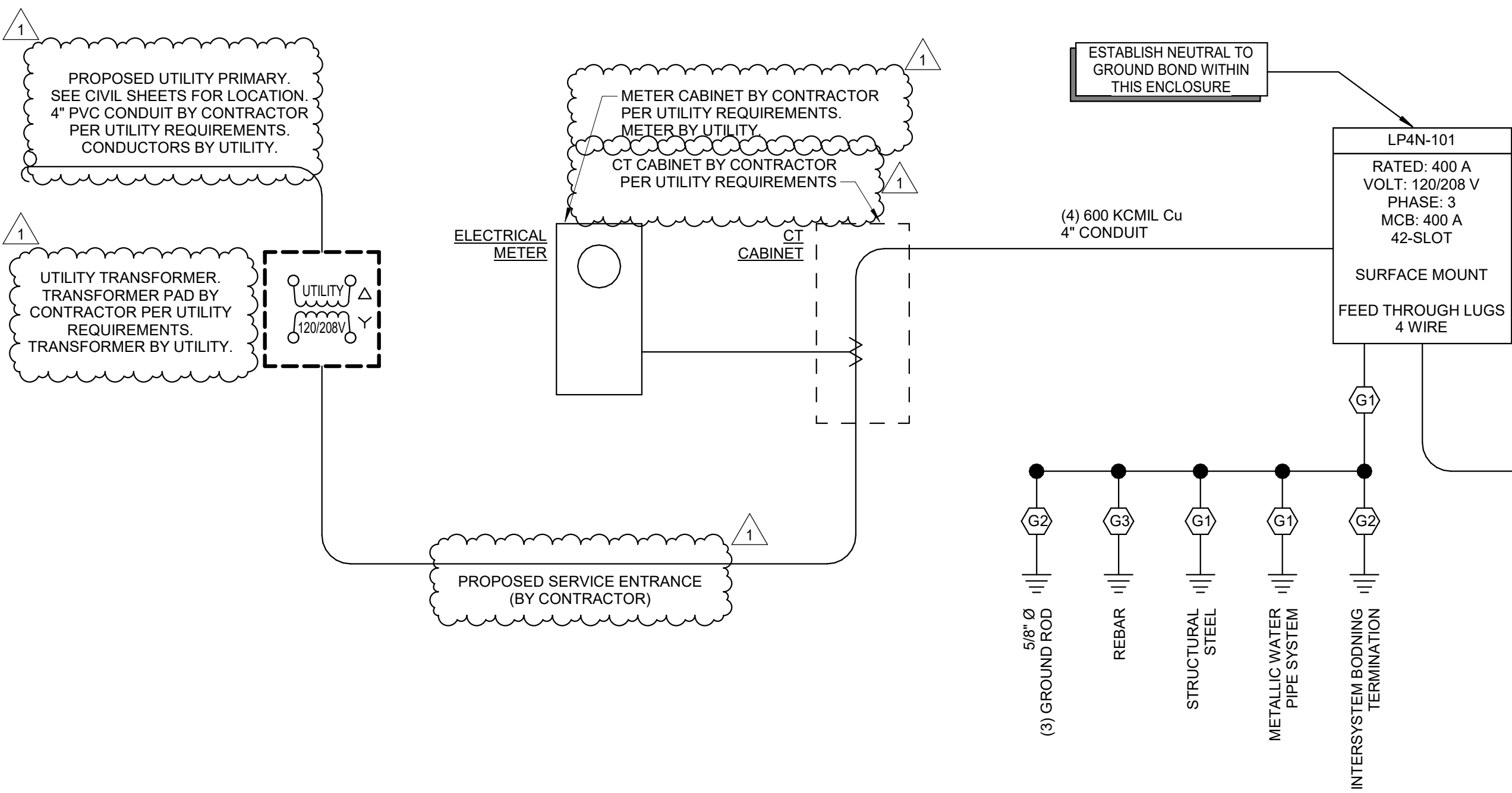
SITE UTILITY PLAN

SHEET NUMBER:

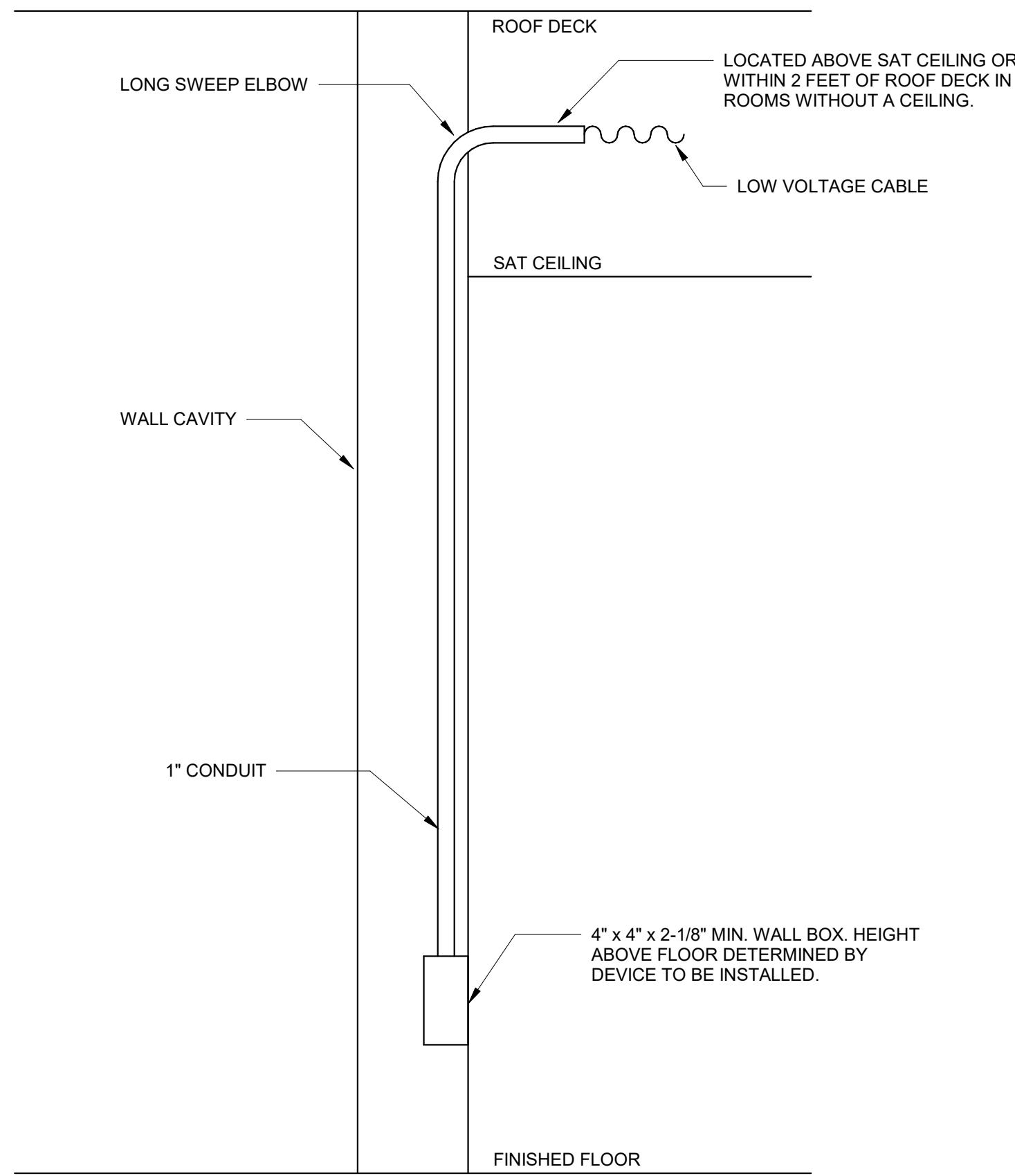
C102

JULY 29, 2022





1 ELECTRICAL ONE-LINE  
NTS



3 LOW VOLTAGE DEVICE ROUGH-IN DETAIL  
NTS

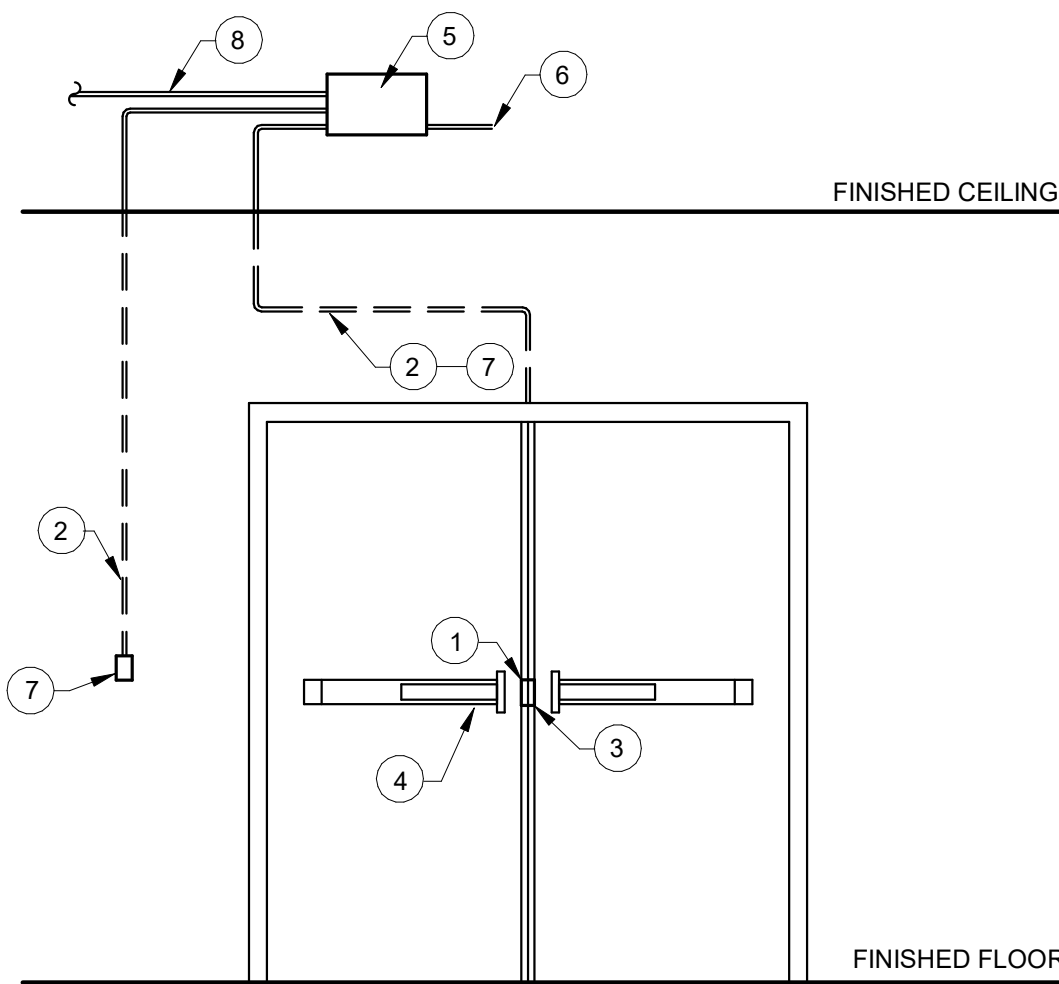
LIGHTING CONTROL MATRIX										
TAG	LIGHTING CONTROL CAPABILITIES									
	LINE VOLTAGE	LOW VOLTAGE	MANUAL ON	MANUAL OFF	MANUAL DIMMING	OCC SENSOR ON	OCC SENSOR OFF	VAC. SENSOR OFF	PHOTOCONTROL ON	PHOTOCONTROL OFF
1		X				X				
2		X	X	X						
3		X				X	X			
4		X	X	X						
5		X							X	X

#### LIGHTING CONTROL SEQUENCES OF OPERATION

- CEILING MOUNT, LOW VOLTAGE, OCCUPANCY SENSOR CONTROL.  
A. UPON DETECTION OF MOTION BY ANY OCCUPANCY SENSOR IN THE ZONE, ALL LIGHTING SHALL BE ON.  
B. AFTER NO MOTION DETECTION FOR 20 MINUTES, LIGHTING SHALL BE OFF.
- CEILING MOUNT, LOW VOLTAGE, VACANCY SENSOR & MANUAL CONTROL.  
A. UPON ACTIVATION BY MANUAL BUTTON, LIGHTING SHALL BE ON.  
B. AFTER NO MOTION DETECTION FOR 20 MINUTES, LIGHTING SHALL BE OFF.  
C. LIGHTING MAY BE DEACTIVATED BY MANUAL BUTTON.
- WALL MOUNT, LOW VOLTAGE, OCCUPANCY SENSOR CONTROL.  
A. UPON DETECTION OF MOTION BY ANY OCCUPANCY SNESOR IN THE ZONE, ALL LIGHTING SHALL BE ON.  
B. AFTER NO MOTION DETCTION FOR 20 MINUTES, LIGHTING SHALL BE OFF.
- WALL MOUNT, LINE VOLTAGE, MANUAL CONTROL.  
A. UPON ACTIVATION BY MANUAL BUTTON, LIGHTING SHALL BE ON.  
B. LIGHTING SHALL BE DEACTIVATED BY MANUAL BUTTON.
- WALL MOUNT, LINE VOLTAGE, PHOTOCELL CONTROL.  
A. LIGHTING FICTURE SHALL BE CONTROLLED BY EXTERIOR WALL MOUNTED PHOTOCELL.

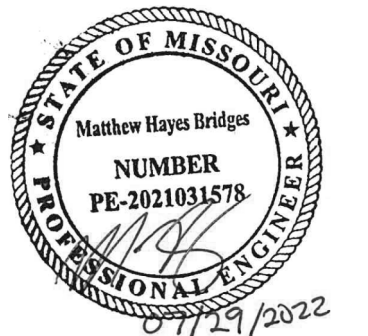
#### CONTRACTOR NOTES:

- COORDINATE COMPATABILITY OF ALL LIGHTING CONTROLS AND LIGHT FIXTURE DRIVERS.
- PROVIDE ALL WIRE, DEVICES, POWER PACKS, SENSORS, ETC. AS NECESSARY TO CREATE A STAND ALONE SYSTEM THAT ACCOMPLISHES THE DESCRIBED SEQUENCE OF OPERATION.
- ALL LIGHTING CONTROLS SHALL BE HARD WIRED (WIRELESS SYSTEMS ARE NOT ACCEPTABLE) ACCEPTABLE CONTROL DEVICE MANUFACTURERS SHALL INCLUDE CRESTRON, ACUITY, WATTSTOPPER, HUBBELL AND LUTRON. SUBSTITUTIONS SHALL BE ALLOWED WITH ENGINEERS WRITTEN APPROVAL WITH SUBMISSION ON STATE'S SUBSTITUTION REQUEST FORM.
- WHERE OCCUPANCY AND/OR VACANCY SENSOR LOCATIONS ARE SHOWN, ENTIRE ROOM/SPACE IN WHICH THE SENSORS ARE PLACED SHALL HAVE TOTAL COVERAGE PROVIDED.



4 ACCESS CONTROL DETAIL - DOUBLE DOOR  
NTS

STATE OF MISSOURI  
MICHAEL L. PARSON,  
GOVERNOR



MATTHEW H. BRIDGES - ENGINEER  
MO # PE-2021031578

**KLINGNER**  
& ASSOCIATES, P.C.

Engineers • Architects • Surveyors

Columbia, Missouri

907 East Ash Street  
Burlington, IA 50888

www.klinger.com  
Quincy, IL  
Galesburg, IL  
Burlington, IA  
Falls, IA  
Hannibal, MO

KLINGNER & ASSOCIATES, P.C. - ENGINEERING

MISSOURI STATE CERTIFICATE OF AUTHORITY #000866

OFFICE OF ADMINISTRATION  
DIVISION OF FACILITIES  
MANAGEMENT,  
DESIGN AND CONSTRUCTION

CONSTRUCT NEW  
FITNESS CENTER

IKE SKELTON TRAINING  
SITE

7001 RANGE ROAD  
JEFFERSON CITY, MO 65101

PROJECT # T2041-01  
SITE # 6300  
ASSET # 8136300040

REVISION: ADDENDUM #2  
DATE: 08/18/2022  
REVISION: \_\_\_\_\_  
DATE: \_\_\_\_\_  
REVISION: \_\_\_\_\_  
DATE: \_\_\_\_\_  
ISSUE DATE: 07/29/22

CAD DWG FILE: E501  
DRAWING BY: JLD  
CHECKED BY: JJN  
DESIGNED BY: JLD

SHEET TITLE:

**ELECTRICAL  
DETAILS**

SHEET NUMBER:

**E501**

JULY 29, 2022