

## **ADDENDUM NO. 2**

**TO: PLANS AND SPECIFICATIONS FOR STATE OF MISSOURI**

**Festus Readiness Center  
Interior/Exterior Repairs  
270 Highway P  
Festus, MO 63028  
PROJECT NO. T2330-01**

**Bid Opening Date:** 1:30 PM, August 19, 2025 (Not Changed)

**Bidders are hereby informed of the following:**

### **SPECIFICATION CHANGES:**

**1. Section 012200 Unit Prices**

**a. Section 3.1 List of Unit Prices**

**A. Revised - Unit Price No.2:**

Description: Scrim faced Glass-fiber Blanket Insulation installed in the large Drill Room, FES129 and the 2nd floor rooms; FES200, FES201, FES203, FES204, FES206, FES207, FES209, FES210, FES212, FES213, FES214, and FES215 to replace the existing insulation that is falling out and not secured in Place.

1. Base Bid Quantity: Total removal and replacement of 6,000 Sq. ft. equating to approximately 50% of the insulation in the areas indicated above. Provide unit cost deduct for removal of any additional insulation to be removed and replaced and the potential credit for areas determined to remain as-is.

**B. Revised - Unit Price No. 3:**

1. Description: Install tape for insulation to mend damaged areas of the scrim facer in the large Drill Room, FES129 and the 2nd floor rooms; FES200, FES201, FES203, FES204, FES206, FES207, FES209, FES210, FES212, FES213, FES214, and FES215.

**C. Added - Unit Price No. 4:**

1. Description: Removal, retain, and replace all existing light fixtures in the areas indicated for roof insulation scope of work.
2. Unit of Measurement: Per fixture including all labor.
3. Base Bid Quantity: Total removal and replacement of 32 fixtures equating to approximately 50% of the existing fixtures. Provide unit cost deduct for removal of any additional light fixtures to be removed and replaced and the potential credit for areas determined to remain as-is.

**D. Added - Unit Price No. 5**

1. Description: Removal, retain, and replace all ceiling components in the areas indicated for roof insulation scope of work.
2. Unit of Measurement: Per square foot.
3. Base Bid Quantity: Total removal and replacement of 2,500 Sq. ft. equating to approximately 50% of the existing ceiling. Provide unit cost deduct for removal of any additional ceilings to be removed

and replaced and the potential credit for areas determined to remain as-is.

### **DRAWING CHANGES:**

1. A-RC-02 – 2<sup>ND</sup> Floor Reflected Ceiling Plan
  - a. Area indicated for the removal and replacement of damaged
2. M-1 – Mechanical HVAC Plan
  - a. Air Device Schedule added to the drawing.

### **BIDDER QUESTIONS AND RESPONSES:**

1. Question: On sheet # A-DP-03, items 13 calls for removal & retain for re-installation of all ceiling lights in area indicated for roof insulation scope of work. There are no electrical demo plans to indicate these locations, or quantities of lighting to be removed and re-installed. I am concerned that we will have no pricing on this scope of work without additional information.  
Response: Refer to added unit price #4 & 5 regarding the removal and replacement of existing light fixtures located in the area of the roof insulation scope of work.
2. Question: Sheet # A-DP-01 – KN#5 calls out: Remove existing lockers. Salvage for owner's re-use.  
Will the 67 lockers shown on AFP-01 be installed by owner?  
Response: Salvage lockers for reinstallation by contractor.
3. Question: Is there a 'scope of work for repairs to 'unheated storage buildings' as noted on Cover sheet # G-001? I could not find any plans or pictures showing the repairs required on this area.  
Response: There is no longer any scope of work for the unheated storage buildings.
4. The mechanical schedule sheet does not have an air device schedule. Suppliers need to know what to quote.  
Response: Refer to revised M-1 with air device schedule added.

### **GENERAL:**

1. Please contact April Howser, Contract Specialist, at 573-751-0053 or [April.Howser@oa.mo.gov](mailto:April.Howser@oa.mo.gov) for questions about bidding procedures, MBE/WBE/SDVE Goals, and other submittal requirements.
2. The deadline for technical questions is August 11, 2025, at Noon.
3. Changes to, or clarification of, the bid documents are only made as issued in the addenda.
4. All correspondence with respect to this project must include the State of Missouri project number as indicated above.
5. Current Plan Holders list available online at: [Bid Listing/ Electronic Plans \(Projects Currently Bidding\) | Office of Administration \(mo.gov\)](#) T233001 - Festus Readiness Center-Repairs to Interior/Exterior, Readiness Center and Unheated Storage Buildings

6. Prospective Bidders contact American Document Solutions, 1400 Forum Blvd Suite 7A, Columbia MO 65203, 573-446-7768 to order official plans and specifications.
7. All bids shall be submitted on the bid form without additional terms and conditions, modifications, or stipulations. Each space on the bid form shall be properly filled including a bid amount for the alternates. Failure to do so will result in rejection of the bid.
8. MBE/WBE/SDVE participation requirements can be found in DIVISION 00. The MBE/WBE/SDVE participation goals are 10%/10%/3%, respectively. Only certified firms as of the bid opening date can be used to satisfy the MBE/WBE/SDVE participation goals for this project. If a bidder is unable to meet a participation goal, a Good Faith Effort Determination Form must be completed. Failure to complete this process will result in rejection of the bid.

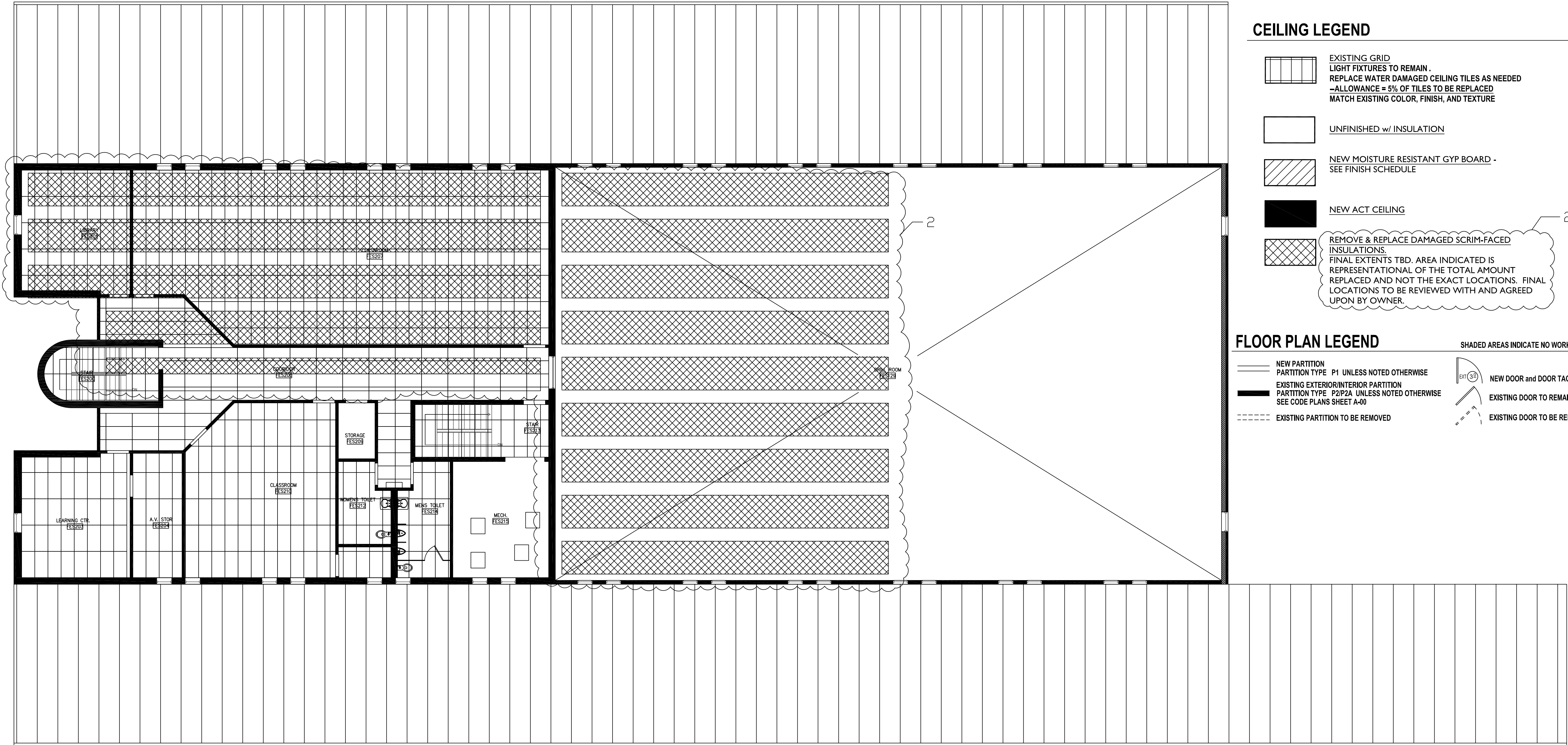
**ATTACHMENTS:**

1. Revised Drawing Sheets A-RC-02, M-1.
2. Revised Specifications 012200.
3. Revised Unit Price Form 004322

By the Order of:

Fred L. Decker Jr., Project Manager  
Division of Facilities Management,  
Design and Construction  
August 13, 2025

**END ADDENDUM NO. 2**



- EXISTING GRID  
LIGHT FIXTURES TO REMAIN .  
REPLACE WATER DAMAGED CEILING TILES AS NEEDED  
-ALLOWANCE = 5% OF TILES TO BE REPLACED  
MATCH EXISTING COLOR, FINISH, AND TEXTURE

UNFINISHED w/ INSULATION

NEW MOISTURE RESISTANT GYP BOARD -  
SEE FINISH SCHEDULE

NEW ACT CEILING

REMOVE & REPLACE DAMAGED SCRIM-FACED  
INSULATIONS.  
FINAL EXTENTS TBD. AREA INDICATED IS  
REPRESENTATIONAL OF THE TOTAL AMOUNT  
REPLACED AND NOT THE EXACT LOCATIONS. FINAL  
LOCATIONS TO BE REVIEWED WITH AND AGREED  
UPON BY OWNER.

- NEW PARTITION  
PARTITION TYPE P1 UNLESS NOTED OTHERWISE

EXISTING EXTERIOR/INTERIOR PARTITION  
PARTITION TYPE P2/P2A UNLESS NOTED OTHERWISE  
SEE CODE PLANS SHEET A-00

EXISTING PARTITION TO BE REMOVED
- SHADED AREAS INDICATE NO WORK
- NEW DOOR and DOOR TAG

EXISTING DOOR TO REMAIN - NO WORK

EXISTING DOOR TO BE REMOVED

2nd FLOOR REFLECTED CEILING PLAN

SCALE: 1/8" = 1'-0" (24x36)

STATE OF MISSOURI  
MICHAEL L. PARSON,  
GOVERNOR



OFFICE OF ADMINISTRATION  
DIVISION OF FACILITIES  
MANAGEMENT,  
DESIGN AND CONSTRUCTION

DEPARTMENT OF

Festus Readiness Center

Repairs to Int./Ext. Readiness Center,  
and Unheated Storage Buildings

ARMY NATIONAL GUARD  
2740 State Rd P, Festus, MO 63028

PROJECT # T-2330-01  
SITE # 6302  
FACILITY # 56377

REVISION: \_\_\_\_\_  
DATE: \_\_\_\_\_  
REVISION: \_\_\_\_\_  
DATE: \_\_\_\_\_  
REVISION: ADDENDA 2  
DATE: 8/14/2025  
ISSUE DATE: 05/22/2024

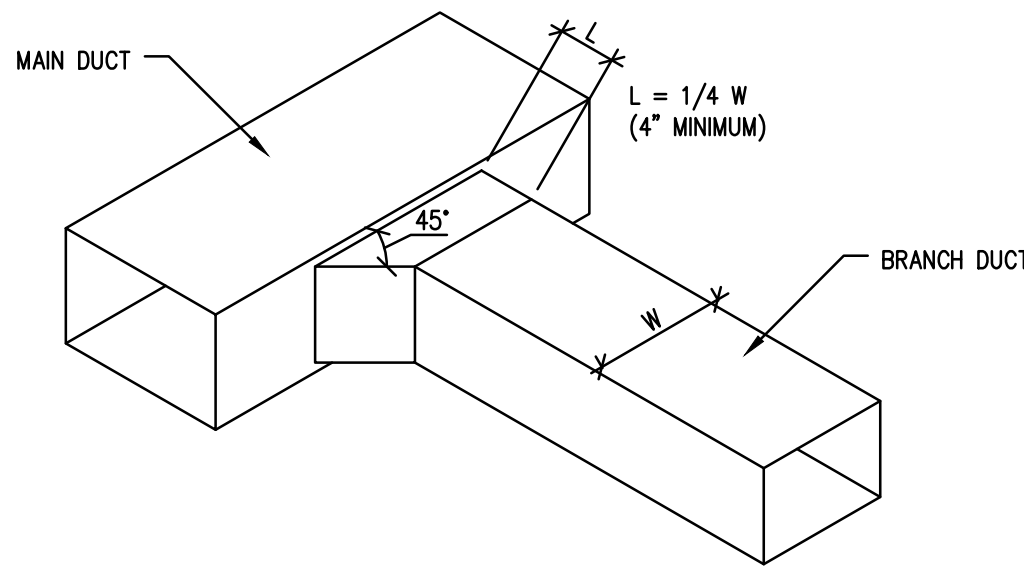
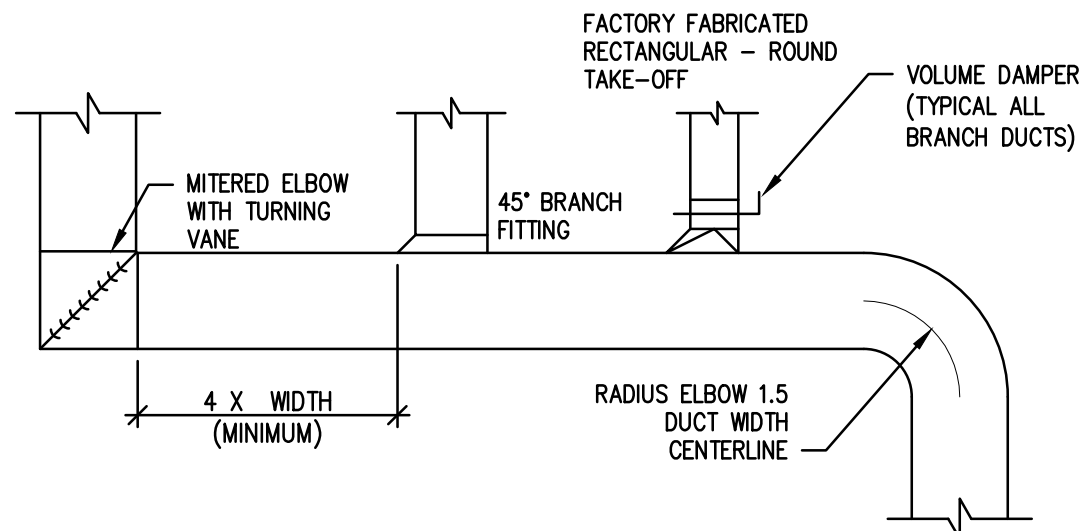
CAD DWG FILE: \_\_\_\_\_  
DRAWN BY: \_\_\_\_\_  
CHECKED BY: \_\_\_\_\_  
DESIGNED BY: \_\_\_\_\_

SHEET TITLE:  
2nd FLOOR  
REFLECTED  
CEILING PLAN

SHEET NUMBER:

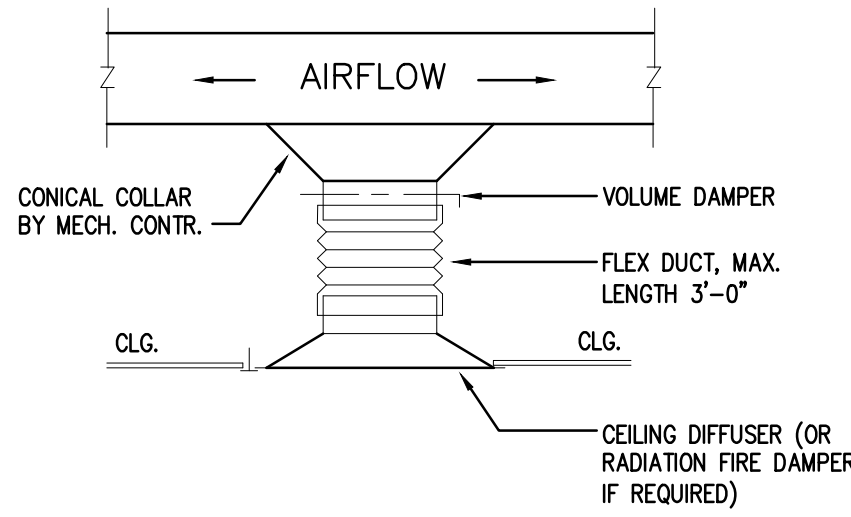
A-RC-02

11 OF 19 SHEETS  
06/14/2024

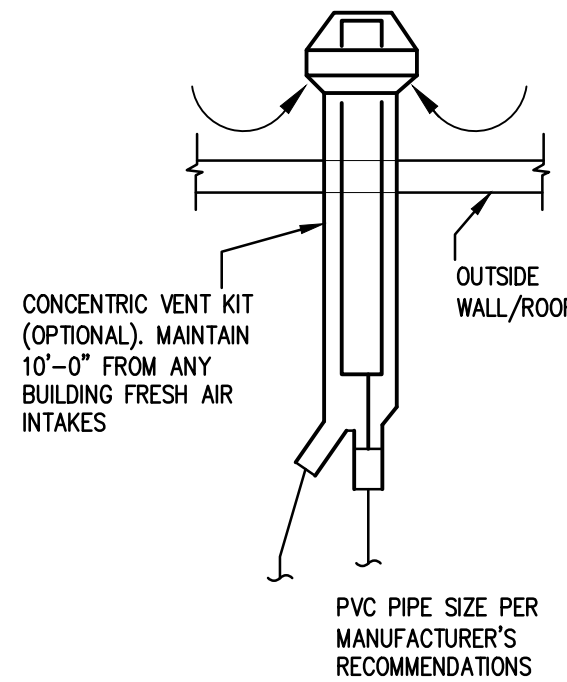
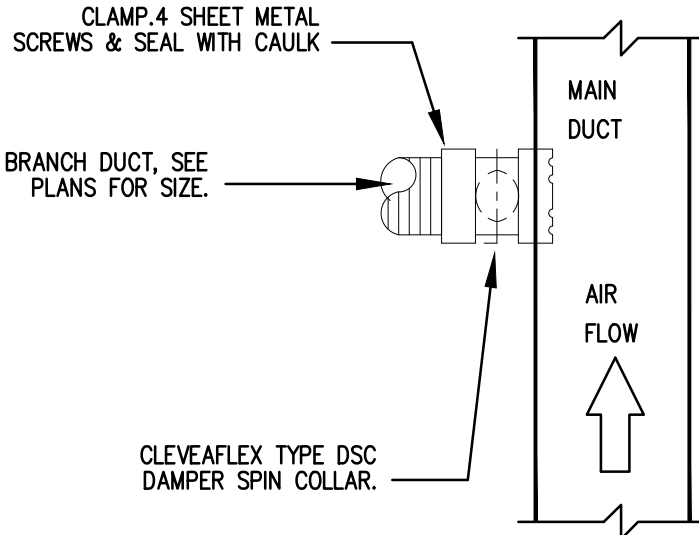


### DUCT TAKE OFF DETAILS

SCALE: NTS



NOTES: PROVIDE ADAPTERS FOR DIFFUSERS WITH SQUARE AND RECTANGULAR NECKS AS REQUIRED.



### CONCENTRIC VENT TERMINATION

SCALE: NTS

HVAC LEGEND	
SYMBOL	DESCRIPTION
	SUPPLY AIR DIFFUSER
	RETURN AIR GRILLE
	EXHAUST AIR GRILLE
	NEW TO EXISTING CONNECTION
	THERMOSTAT (CONTROLLER)
	DIRECTION OF AIR FLOW

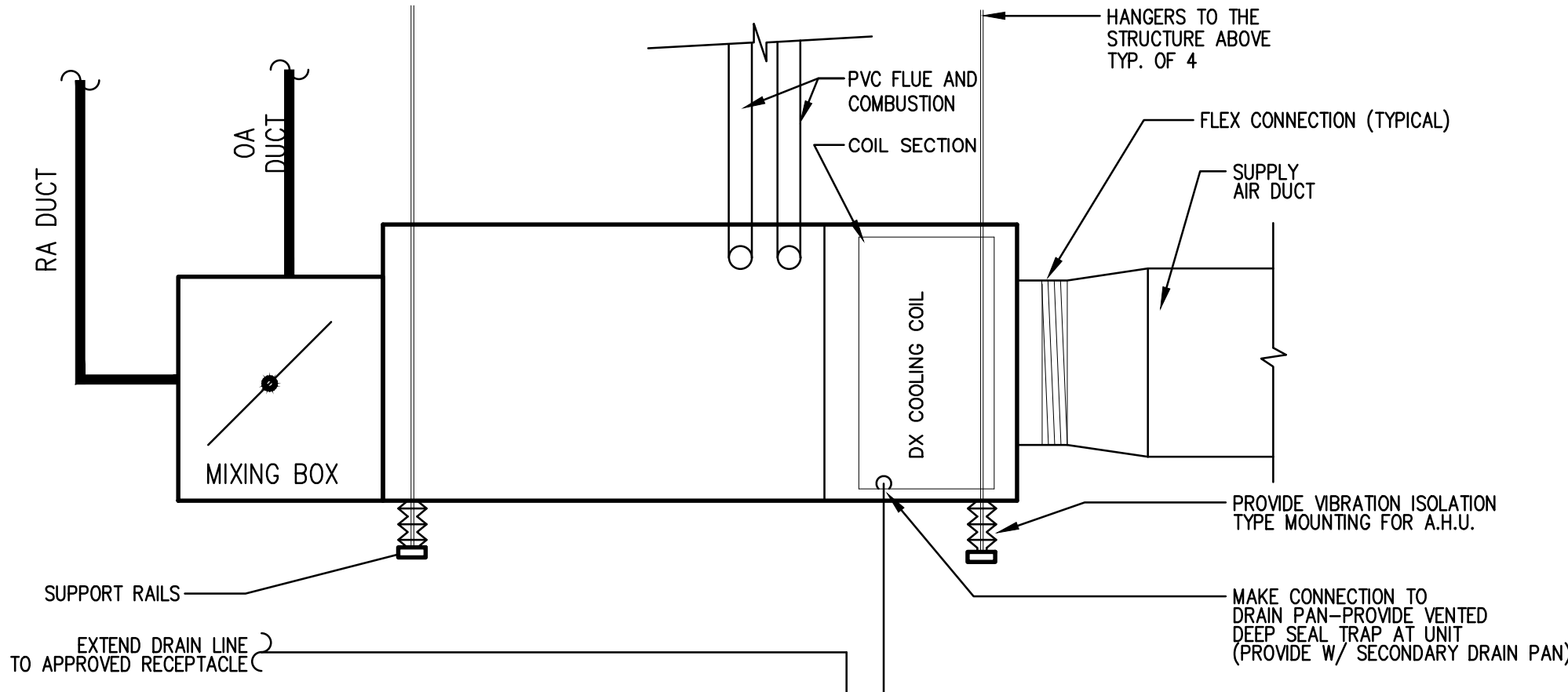
### EXHAUST REQUIREMENTS

SPACE NAME	SOFT	EXH CFM	OA CFM
WMNS RR	364	300	250
WMNS SHO/LR	263	145	120
TOTAL	627	445	370

SPACE NAME	SOFT	EXH CFM	OA CFM
GYM	352	-	100
MENS LR	377	100	-
MENS RR	306	450	400
MENS SHO	330	80	60
TOTAL	1365	630	560

### HORIZONTAL MOUNT FURNACE DETAIL

SCALE: NTS



### EXHAUST FAN SCHEDULE (FIRST FLOOR ONLY)

PLAN MARK	MANUFACTURER	MODEL	TYPE	SP	CFM	FRPM	ELECTRICAL	OPTIONS	NOTES
EF-1	GREENHECK	SQ-100-VG	INLINE	0.5	630	1253	120/1/60 1/4 HP	BACK DRAFT DAMPER ROOF CURB	1,2,3
EF-2	GREENHECK	SQ-90-VG	INLINE	0.375	445	1545	120/1/60 1/10 HP	BACK DRAFT DAMPER ROOF CURB	1,2,3

NOTES:

- PROVIDE BACKDRAFT DAMPER.
- RUN CONTINUOUSLY DURING OCCUPIED CYCLE.
- PROVIDE W/ SPEED CONTROLLER.

### AIR DEVICE SCHEDULE

PLAN MARK	MANUFACTURER MODEL NUMBER	MODULE	MOUNT
S1	TITUS TMSAA	24X24	DUCT
R1	TITUS PAR-AA	24X12	DUCT
E1	TITUS 50F	12X12	DUCT

PROVIDE TITUS SECTORIZING BAFFLE AS REQUIRED WHERE DIRECTIONAL ARROWS ARE SHOWN ON PLAN.

LEGEND

MIN. DUCT CONNECTION/NECK SIZE

PLAN MARK

CFM

### MECHANICAL EQUIPMENT SCHEDULE (FIRST FLOOR ONLY)

INDOOR UNIT																OUTDOOR UNIT											
PLAN MARK	MANUFACTURER	INDOOR UNIT MODEL NUMBERS	TEDB (° F)	TEWB (° F)	SUPPLY AIR (CFM)	EXTERNAL S.P. (IN WC)	MOTOR	VOLTAGE	MCA/MCOP	HEATING CAPACITY IN (MBH)	HEATING CAPACITY OUT (MBH)	AFUE	OUTSIDE AIR (CFM) MIN.	FILTER TYPE	AMBIENT AIR (DEG F)	HEATING STAGE(S)	OPERATING WEIGHT (LBS)	PLAN MARK	CU MODEL NUMBER	TOTAL CLG CAPACITY (MBH)/TON/SEER	CONDENSING UNIT ELEC.	COOLING STAGE(S)	T-STAT TYPE	SHIPPING WEIGHT LBS	NOTES		
F-1	TRANE	4TXCC009DS3 / S9V2C080U5PSB	80	67	1600	0.5"	STANDARD	120/1/60	13.9/15	52/80	50.4/77.8	96%	560	THROWAWAY	95	TWO	150	CU-1	4TTR6048N1	47.5/4/16.0	208/1/60//24/40	TWO	ONE PIECE PROGRAM	256	1 - 7		
F-2	TRANE	4TXCB006DS3 / S9V2C060U4FSB	80	67	800	0.5"	STANDARD	120/1/60	10.8/15	39/60	37.8/58.2	96%	370	THROWAWAY	95	TWO	122	CU-2	4TTR6024N1	25.2/2/16.0	208/1/60//13.4/20	TWO	ONE PIECE PROGRAM	244	1 - 7		
<div>NOTES:</div> <div><div><div>1. PROVIDE WITH SUPPORT.</div><div>2. TWO STAGE COMPRESSOR WITH VARIABLE SPEED FAN MOTOR.</div><div>3. RUN CONDENSATE LINE TO NEARBY FLOOR DRAIN.</div></div><div><div>4. PROVIDE WITH LOW AMBIENT CONTROL.</div><div>5. SUCTION AND LIQUID LINE SIZES AS REQUIRED PER MANUFACTURER RECOMMENDATION.</div><div>6. PROVIDE MANUAL VOLUME DAMPERS FOR RETURN AND O.A. DUCTS.</div></div><div><div>7. PROVIDE WITH XL824 CONTROLLER WITH BUILT-IN DEHUMIDIFICATION.</div><div>* REFER TO AIRFLOW SCHEDULE ON THIS SHEET FOR OUTDOOR AIR MINIMUM SET POINT.</div></div></div>																											

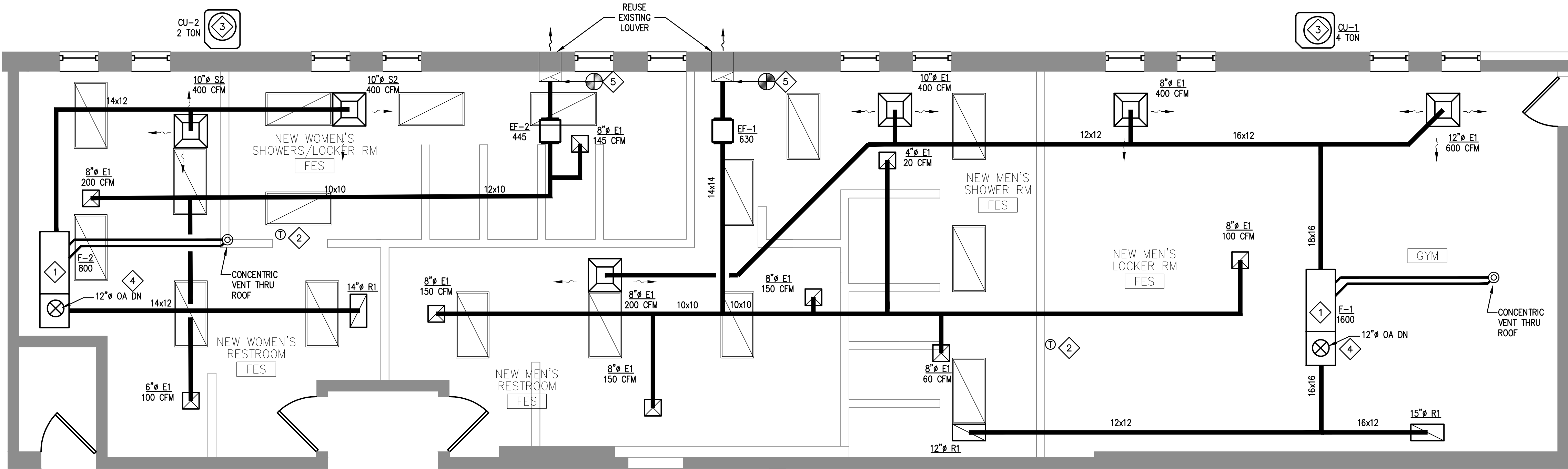
### GENERAL MECHANICAL DEMOLITION NOTES:

ALL INFORMATION AND WORK SHOWN AS EXISTING WAS TAKEN FROM NOTES OF CURSORY FIELD VISITS WITH OWNER REPRESENTATION AND/OR FROM PAST CONSTRUCTION DOCUMENTS. EQUIPMENT AND DUCTWORK HAVE BEEN SHOWN IN AN APPROXIMATE WAY. NOT ALL ASPECTS SHOWN ON THESE DOCUMENTS MAY NOT BEEN ABLE TO BE VERIFIED DUE TO SITE CONDITIONS DURING VISIT(S). CONSEQUENTLY, THE CONTRACTOR SHALL BE RESPONSIBLE FOR DETERMINING ALL WORK NECESSARY TO RENOVATE, ALTER, CHANGE, AND REPAIR EXISTING SYSTEM(S) BASED UPON THE ACTUAL FIELD CONDITIONS.

THE CONTRACTOR SHALL VISIT THE SITE AND THOROUGHLY UNDERSTAND THE EXISTING EQUIPMENT/ SYSTEMS TO BE REMOVED VS THE EXISTING TO REMAIN AND NEW PROPOSED TO BE INSTALLED. NO UNUSED EQUIPMENT, DUCTWORK AND/OR ACCESSORIES ETC. SHALL BE ABANDONED IN PLACE. THIS INCLUDES ALL RELATIVE EQUIPMENT THAT WAS LOCATED ON BOTH THE LOWER AND UPPER FLOORS, THE PARKING GARAGE BELOW, THE LOADING DOCK AND ASSOCIATED MEZZANINE AREAS. THE CONTRACTOR SHALL VERIFY ANY DEMOLITION OF THE ABOVE IN QUESTION WITH THE LANDLORDS REPRESENTATIVE FOR DIRECTION.

### KEYED NOTES

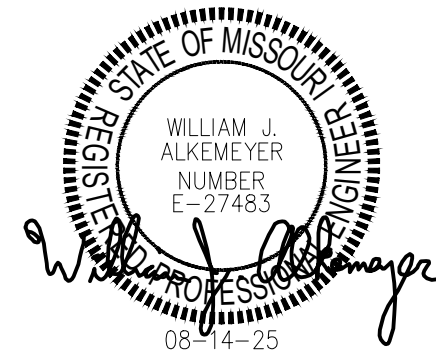
- PROVIDE AND INSTALL FURNACE PART OF SPLIT SYSTEM PER MANUFACTURER'S RECOMMENDATION SUSPENDED FROM STRUCTURE WITH VIBRATION ISOLATORS. REFER TO SCHEDULE ON THIS SHEET. SUSPEND FROM STRUCTURE ABOVE. PROVIDE WITH PRIMARY DRAIN AND DRAIN PAN WITH FLOAT SWITCH PER SECTION 307.2.3 OF THE 2105 IBC. EXTEND CONDENSATE. REFER TO PLUMBING THIS SET FOR LOCATION. ROUTE FURNACE VENT AND COMBUSTION RELIEF THRU ROOF WITH CONCENTRIC VENT KIT. COORDINATE ROUTING AND FINAL LOCATION IN FIELD. MAINTAIN 10' MINIMUM FROM FRESH AIR INTAKES.
- PROVIDE AND INSTALL ONE PIECE PROGRAMMABLE THERMOSTAT, MOUNTED AT 54" A.F.F. PER ADA. COORDINATE LOCATION WITH OTHER ELEMENTS OF WALL. VERIFY EXACT PLACEMENT WITH OWNER.
- CONDENSING UNITS TO BE LOCATED ON CONCRETE PAD AT GRADE. VERIFY EXACT LOCATION WITH CLIENT AND EXTEND REFRIGERANT LINES BASED ON FINAL LENGTH AND ROUTING PER MANUFACTURER'S RECOMMENDATIONS.
- OUTDOOR AIR INTAKE FROM ROOF. PROVIDE RAIN GUARD, INSECT SCREEN AND BACKDRAFT. COORDINATE ROUTING AND LOCATION WITH STRUCTURE. MAINTAIN 10' FROM AND EXHAUST, VENT OR FLUE.
- PROVIDE NEW INLINE FAN AND ASSOCIATED EXHAUST DUCT AND GRILLES. ROUTE DUCT FROM EACH GRILLE TO FANS INLET AND FROM FAN'S OUT TRANSITION TO EXISTING DUCT PRIOR TO WALL PENETRATION. FAN TO BE SUSPENDED FROM CEILING WITH VIBRATION ISOLATORS.



### ENLARGED RESTROOM + LOCKER PLAN

SCALE: 1/4" = 1'-0" (24x36)

STATE OF MISSOURI  
MIKE KEHOE,  
GOVERNOR



William J. Alkemeyer, P.E.  
8333 Meridian Ave. #319  
Festus, MO 63029  
Phone (314) 772-0782  
Fax (314) 373-5514



OFFICE OF ADMINISTRATION  
DIVISION OF FACILITIES  
MANAGEMENT,  
DESIGN AND CONSTRUCTION

DEPARTMENT OF

Festus Readiness Center

Repairs to Int./Ext. Readiness Center,  
and Unheated Storage Buildings

ARMY NATIONAL GUARD  
2740 State Rd P, Festus, MO 63028

PROJECT # T-2330-01  
SITE # 6302  
FACILITY # 56377

REVISION: \_\_\_\_\_  
DATE: \_\_\_\_\_  
REVISION: \_\_\_\_\_  
DATE: \_\_\_\_\_  
REVISION: ADDENDUM 2  
DATE: 08/14/2025  
ISSUE DATE: 04/14/2025

CAD DWG FILE: M-HVC-01  
DRAWN BY: MHT  
CHECKED BY: WJA  
DESIGNED BY: MHT

SHEET TITLE:  
MECHANICAL  
HVAC  
PLAN

SHEET NUMBER:

M-1

04/14/2025

## **SECTION 012200 – UNIT PRICES**

### **PART 1 - GENERAL**

#### **1.1 RELATED DOCUMENTS**

- A. Drawings and general provisions of the Contract including General and Supplementary Conditions and other Division 1 Specification Sections apply to this Section.
- B. Quantities of Units to be included in the Base Bid are indicated in Section 004322 – Unit Prices.

#### **1.2 SUMMARY**

- A. This Section includes administrative and procedural requirements for Unit Prices.
- B. Related Sections include the following:
  - 1. Division 1 Section "Allowances" for procedures for using Unit Prices to adjust quantity allowances.
  - 2. Division 1 Section "Contract Modification Procedures" for procedures for submitting and handling Change Orders.

#### **1.3 DEFINITIONS**

- A. Unit Price is a price per unit of measurement for materials or services added to or deducted from the Contract Sum by appropriate modification, if estimated quantities of Work required by the Contract Documents are increased or decreased.

#### **1.4 PROCEDURES**

- A. Unit Prices include all necessary material plus cost for delivery, installation, insurance, overhead, and profit.
- B. Measurement and Payment: Refer to individual Specification Sections for work that requires establishment of Unit Prices. Methods of measurement and payment for Unit Prices are specified in those Sections.
- C. Owner reserves the right to reject Contractor's measurement of Work in-place that involves use of established Unit Prices and to have this work measured, at Owner's expense, by an independent surveyor acceptable to Contractor.
- D. List of Unit Prices: A list of Unit Prices is included in Part 3. Specification Sections referenced in the schedule contain requirements for materials described under each Unit Price.

**PART 2 - PRODUCTS (Not Used)**

**PART 3 - EXECUTION**

**3.1 LIST OF UNIT PRICES**

**A. Unit Price No. 1:**

1. Description: Acoustic Ceiling Tile according to Division 09 Section "Acoustical Tile Ceilings"
2. Unit of Measurement: Removal and Replacement per Square Foot.
3. Base Bid Quantity: 750 square foot, equating to approximately 5% of total ceiling area as noted Drawings A-RC-01 and A-RC-02

**B. Unit Price No. 2:**

1. Description: Scrim faced Glass-fiber Blanket Insulation installed in the large Drill Room, FES129 and the 2<sup>nd</sup> floor rooms; FES200, FES201, FES203, FES204, FES206, FES207, FES209, FES210, FES212, FES213, FES214, and FES215 to replace the existing insulation that is falling out and not secured in Place.

2. Unit of Measurement: Per Square Foot

3. Base Bid Quantity: Total removal and replacement of 6,000 Sq. ft. equating to approximately 50% of the insulation in the areas indicated above. Provide unit cost deduct for removal of any additional insulation to be removed and replaced and the potential credit for areas determined to remain as-is.

**C. Unit Price No. 3:**

1. Description: Install tape for insulation to mend damaged areas of the scrim facer in the large Drill Room, FES129 and the 2<sup>nd</sup> floor rooms; FES200, FES201, FES203, FES204, FES206, FES207, FES209, FES210, FES212, FES213, FES214, and FES215.

**D. Unit of Measurement: Installation of tape on an approximately 1 square foot area.**

**E. Base Bid Quantity: Total area of 100 square feet.**

**D. Unit Price No. 4:**

1. Description: Removal, retain, and replace all existing light fixtures in the areas indicated for roof insulation scope of work.
2. Unit of Measurement: Per fixture including all labor.
3. Base Bid Quantity: Total removal and replacement of 32 fixtures equating to approximately 50% of the existing fixtures. Provide unit cost deduct for removal of any additional light fixtures to be removed and replaced and the potential credit for areas determined to remain as-is.

E. Unit Price No. 5:

1. Description: Removal, retain, and replace all ceiling components in the areas indicated for roof insulation scope of work.
2. Unit of Measurement: Per square foot.
3. Base Bid Quantity: Total removal and replacement of 2,500 Sq. ft. equating to approximately 50% of the existing ceiling. Provide unit cost deduct for removal of any additional ceilings to be removed and replaced and the potential credit for areas determined to remain as-is.

END OF SECTION 012200

## SECTION 004322 - UNIT PRICES FORM

PROJECT NUMBER: T2330-01

ADDENDUM # 2

### 1.0 Description

- A. For changing specified quantities of work from those indicated by the contract drawings and specifications, upon written instructions of Owner, the following unit prices shall prevail. The unit prices include all labor, overhead and profit, materials, equipment, appliances, bailing, shoring, shoring removal, etc., to cover the finished work of the several kinds of work called for. Only a single unit price shall be given, and it shall apply for either MORE or LESS work than that shown on the drawings and called for in the specifications or included in the Base Bid. In the event of more or less units than so indicated or included during construction the total contract price shall be decreased as appropriate or increased by contract change in accordance with General Conditions Article 4.1.

### 2.0 Unit Prices

A. Unit Price No. 1:

1. Description: Acoustic Ceiling Tile according to Division 09 Section "Acoustical Tile Ceilings".
2. Unit of Measurement: Per Square Foot (SF)
3. Base Bid Quantity: 750 square feet, equating to approximately 5% of total ceiling area, as noted in Drawings A-RC-01 and A-RC-02.

\$ \_\_\_\_\_ per square foot.

B. Unit Price No. 2:

1. Description: Scrim faced Glass-fiber Blanket Insulation installed in the large Drill Room, FES129 and the 2nd floor rooms; FES200, FES201, FES203, FES204, FES206, FES207, FES209, FES210, FES212, FES213, FES214, and FES215 to replace the existing insulation that is falling out and not secured in Place.
2. Unit of Measurement: Per Square Foot (SF)
3. Base Bid Quantity: Total removal and replacement of 6,000 Sq. ft. equating to approximately 50% of the insulation in the areas indicated above. Provide unit cost deduct for removal of any additional insulation to be removed and replaced and the potential credit for areas determined to remain as-is.

\$ \_\_\_\_\_ per square foot.

C. Unit Price No. 3:

1. Description: Install tape for insulation to mend damaged areas of the scrim facer in the large Drill Room, FES129 and the 2nd floor rooms; FES200, FES201, FES203, FES204, FES206, FES207, FES209, FES210, FES212, FES213, FES214, and FES215.
2. Unit of Measurement: Per Square Foot (SF)
3. Base Bid Quantity: Total area of 100 square feet.

\$ \_\_\_\_\_ per square foot.

D. Unit Price No. 4:

1. Description: Removal, retain, and replace all existing light fixtures in the areas indicated for roof insulation scope of work.
2. Unit of Measurement: Per fixture (each)
3. Base Bid Quantity: Total removal and replacement of 32 fixtures equating to approximately 50% of the existing fixtures. Provide unit cost deduct for removal of any additional light fixtures to be removed and replaced and the potential credit for areas determined to remain as-is.

\$ \_\_\_\_\_ each.

E. Unit Price No. 5:

1. Description: Removal, retain, and replace all ceiling components in the areas indicated for roof insulation scope of work.
2. Unit of Measurement: Per Square Foot (SF)
3. Base Bid Quantity: Total removal and replacement of 2,000 Sq. ft. equating to approximately 50% of the existing ceiling. Provide unit cost deduct for removal of any additional ceilings to be removed and replaced and the potential credit for areas determined to remain as-is.

\$ \_\_\_\_\_ per square foot.