

ST. LOUIS READINESS CENTER LAMBERT FIELD BUILDING RENOVATION BUILDING 231 10800 INTERNATIONAL BLVD. BRIDGETON, ST. LOUIS COUNTY, MISSOURI

OWNER: STATE OF MISSOURI
MIKE KEHOE,
GOVERNOR

MISSOURI NATIONAL GUARD
OFFICE OF THE ADJUTANT GENERAL
FACILITIES MANAGEMENT OFFICE

PROJECT
MANAGEMENT: MISSOURI NATIONAL GUARD
OFFICE OF THE ADJUTANT GENERAL
FACILITIES MANAGEMENT OFFICE



SHEET INDEX:

G-001	COVER SHEET
A100	FLOOR PLAN/NOTES
A200	ELEVATIONS
A201	ELEVATION PICTURES
A300	WALL SECTIONS, DETAILS
M101	HVAC PLAN
M102	HVAC PLAN
E101	ELECTRICAL PLAN Alt 1
E102	ELECTRICAL PLAN Base Bid

DESIGNER: MISSOURI ARMY NATIONAL GUARD

PROJECT NUMBER: T242401

SITE NUMBER: 6280
ASSET NUMBER: 8136280001



PROJECT LOCATION
ADDRESS:
10800 INTERNATIONAL BLVD.
BRIDGETON, ST. LOUIS COUNTY, MISSOURI

SHEET NUMBER:

G-001

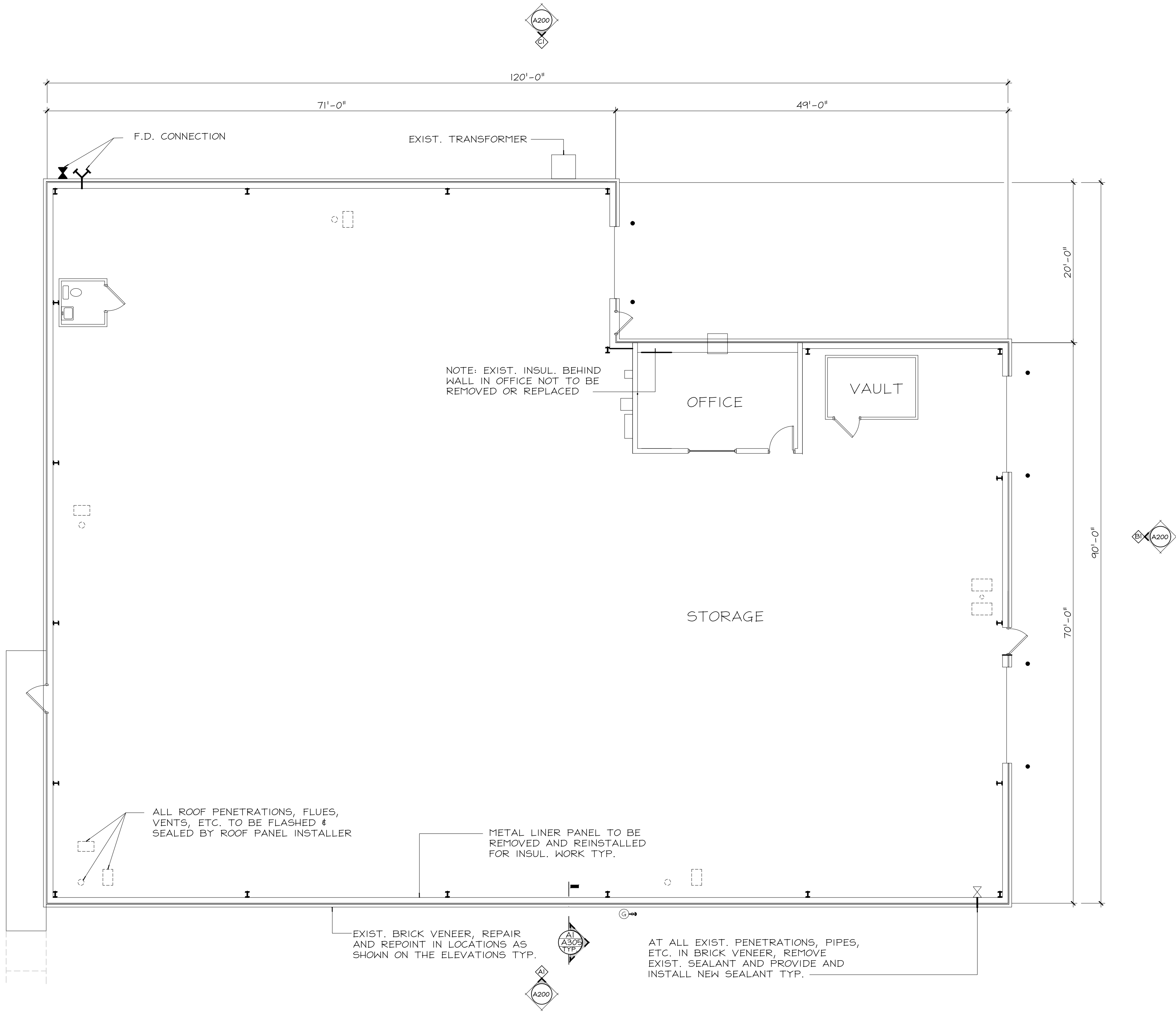
1 OF 9 SHEETS
07/24/2025

D

C

B

A



AI FLOOR PLAN
A100 SCALE: 1/8" = 1'-0"

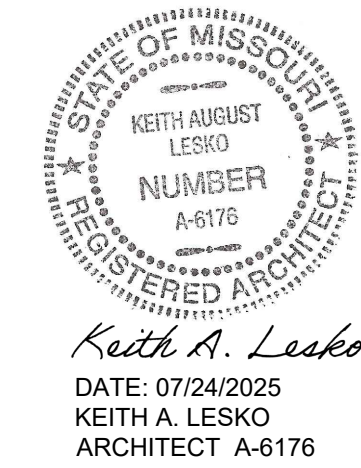
SCOPE OF WORK:

1. BASE BID: REMOVE AND REPLACE ALL EXIST. FIBERGLASS INSUL. WALLS AND ROOF. EXIST. MTL. INTERIOR LINER PANEL WILL HAVE TO BE REMOVED AND REINSTALLED FOR INSUL. REPLACEMENT. FOR WALL INSUL. SEE SPECIFICATION SECTION 072119 AND FOR FIRE PROTECTION APPLY SPRAY FOAM PAINT COATING C315.
2. BASE BID: REMOVE AND REPLACE MTL. ROOF PANELS INCLUDING ALL TRIM, GUTTERS, DOWN SPOUTS (DS), ETC. SEE SPECIFICATION SECTION 074116.
3. BASE BID: PROVIDE AND INSTALL SNOW GUARD ON THE 49'-0"++ OF ROOF, NORTHEAST CORNER OF ROOF.
4. BASE BID: REMOVE AND REPLACE ALL MTL. SIDING ABOVE BRICK VENEER INCLUDING ALL ASSOCIATED FLASHINGS AND TRIM. SEE ELEVATIONS AND SPECIFICATION SECTION 074213.13
5. BASE BID: REPAIR/REPLACE BRICK AND REPOINT BRICK VENEER IN AREAS AS SHOWN ON THE ELEVATIONS. SEE SPECIFICATION SECTION 040120.64
6. BASE BID: REMOVE AND REPLACE ALL SEALANT INCLUDING BACKER ROD AT CONTROL JOINTS (CJ) IN BRICK VENEER.
7. BASE BIDE: REMOVE AND REPLACE ALL OVERHEAD DOOR AND EXTERIOR MAN DOORS WEATHER STRIPPING WITH LIKE AND KIND.
8. BASE BID: REMOVE AND REPLACE EXTERIOR LIGTHS, SEE MEP DRAWINGS
9. BASE BID: REPLACE EXIST. VENTILATION SYS. SEE MEP DRAWINGS.
10. BASE BID: REMOVE EXIST. UNIT HEATERS AND REPLACE WITH SPLIT SYSTEM HEATING/COOLING UNITS. SEE MEP DRAWINGS.
11. ALT. #1 REPLACE INTERIOR LIGHTS SEE MEP DRAWINGS AND SPECIFICATIONS.

GENERAL NOTES:

1. CONTRACTOR SHALL FIELD VERIFY ALL DIMENSIONS.
2. ALL DEMO MATERIAL SHALL BE REMOVED FROM SITE AND DISPOSED OF IN LICENSED LANDFILLS.
3. ALL REPOINTING OF BRICK VENEER AND BRICK REPLACEMENT SHOWN ON THESE DRAWINGS IS FOR REFERENCE ONLY. ACTUAL QUANTITIES OF REPOINTING AND BRICK REPLACEMENT SHALL BE FIELD VERIFIED.
4. NEW BRICK FOR REPLACEMENT SHALL MATCH EXIST. BRICK VENEER. SAMPLES SHALL BE SUBMITTED TO PROJECT MANAGER FOR APPROVAL.
5. PRIOR TO REPOINTING, ALL BRICK VENEER SHALL BE CLEANED W/ A PRESSURE WASHER USING LOW PRESSURE SETTING. AVOID HOLDING THE NOZZEL IN ONE SPOT FOR TOO LONG.
6. AFTER REPOINTING AND BRICK REPLACEMENT, THESE AREAS SHALL BE CLEANED TO REMOVE EXCESS MORTAR WITH BRUSH AND WATER OR A GENTLE BRICK ACID FOLLOWING MANUFACTURER INSTRUCTIONS.

STATE OF MISSOURI
MIKE KEHOE,
GOVERNOR



OFFICE OF THE
ADJUTANT GENERAL

MISSOURI NATIONAL GUARD
FACILITIES DIVISION

OFFICE OF ADMINISTRATION
DIVISION OF FACILITIES
MANAGEMENT,
DESIGN AND CONSTRUCTION

OFFICE OF THE
ADJUTANT GENERAL

MISSOURI NATIONAL GUARD
FACILITIES DIVISION

ST. LOUIS READINESS
CENTER LAMBERT FIELD
BUILDING RENOVATIONS

BUILDING 231
10800 INTERNATIONAL BLVD.
BRIDGETON, ST. LOUIS COUNTY,
MISSOURI

PROJECT # T242401
ASSET # 8136280001
SITE # 6280

REVISION: _____
DATE: _____
REVISION: _____
DATE: _____
REVISION: _____
DATE: _____

ISSUE DATE: 07/24/2025

CAD DWG FILE: _____
DRAWN BY: KAL
CHECKED BY: KAL
DESIGNED BY: KAL

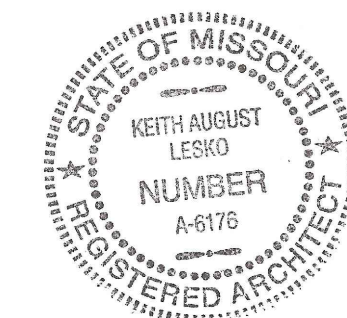
SHEET TITLE:

FLOOR PLAN
NOTES

SHEET NUMBER:

A100

SHEET 2 OF 9
DATE 07/24/2025



Keith A. Lesko
DATE: 07/24/2025
KEITH A. LESKO
ARCHITECT A-6176

OFFICE OF THE
ADJUTANT GENERAL

MISSOURI NATIONAL GUARD
FACILITIES DIVISION

OFFICE OF ADMINISTRATION
DIVISION OF FACILITIES
MANAGEMENT,
DESIGN AND CONSTRUCTION

OFFICE OF THE
ADJUTANT GENERAL

MISSOURI NATIONAL GUARD
FACILITIES DIVISION

ST. LOUIS READINESS
CENTER LAMBERT FIELD
BUILDING RENOVATIONS

BUILDING 231
10800 INTERNATIONAL BLVD.
BRIDGETON, ST. LOUIS COUNTY,
MISSOURI

PROJECT # T242401
ASSET # 8136280001
SITE # 6280

REVISION: _____
DATE: _____
REVISION: _____
DATE: _____
REVISION: _____
DATE: _____

ISSUE DATE: 07/24/2025

CAD DWG FILE: _____
DRAWN BY: KAL
CHECKED BY: KAL
DESIGNED BY: KAL

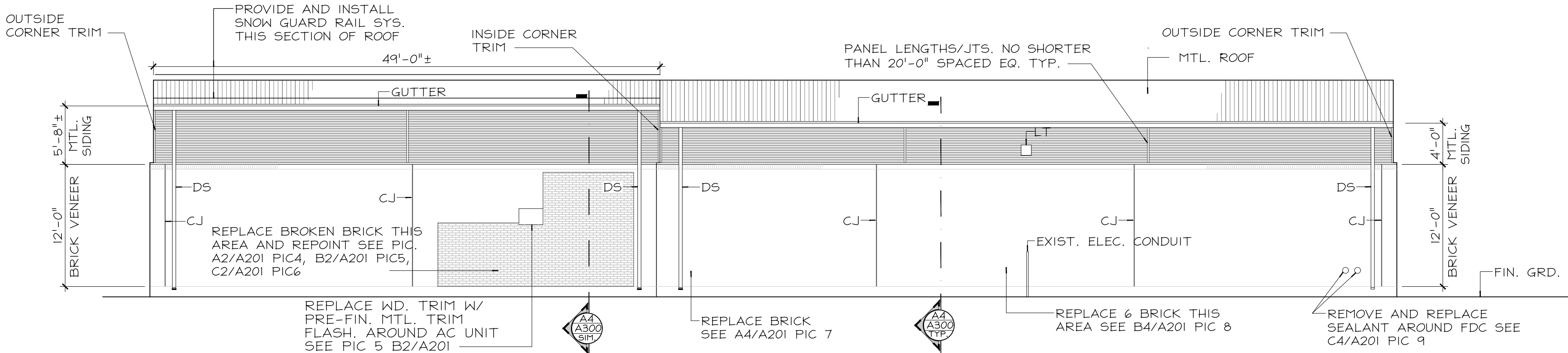
SHEET TITLE:

ELEVATIONS

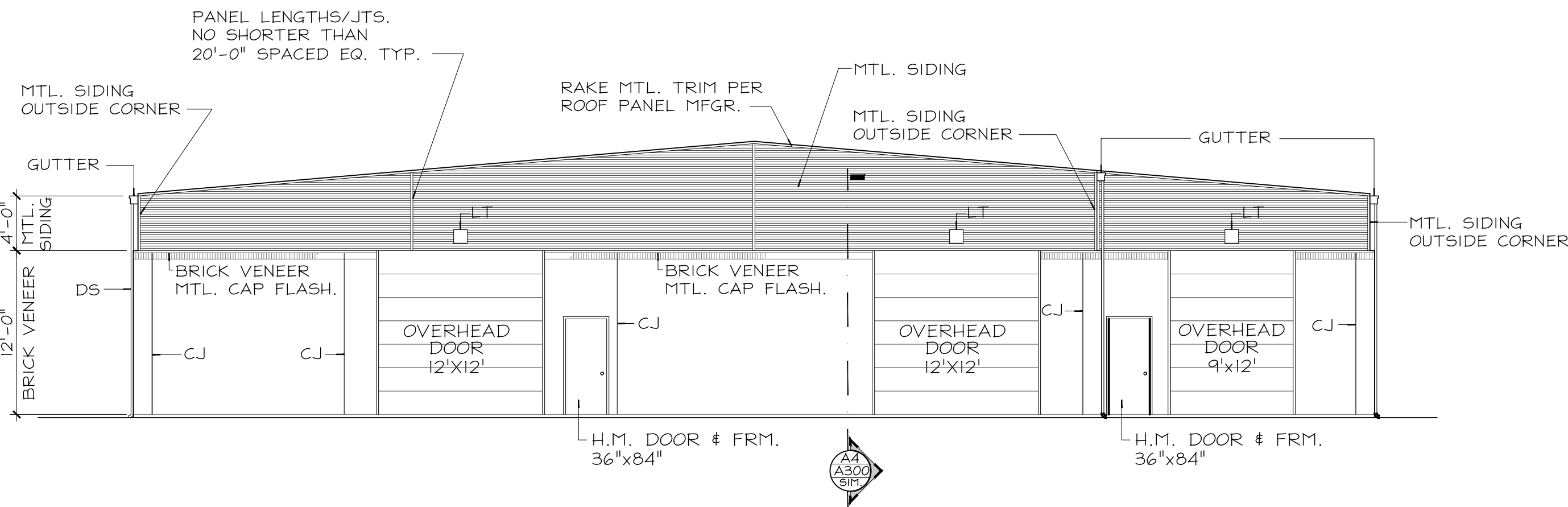
SHEET NUMBER:

A200

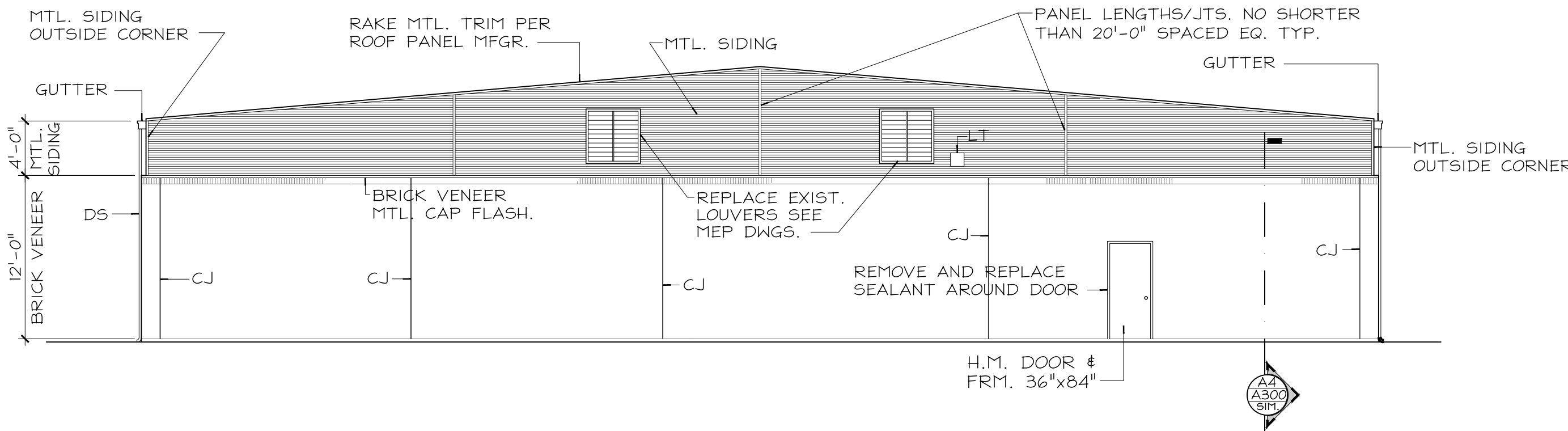
SHEET 3 OF 9
DATE 07/24/2025



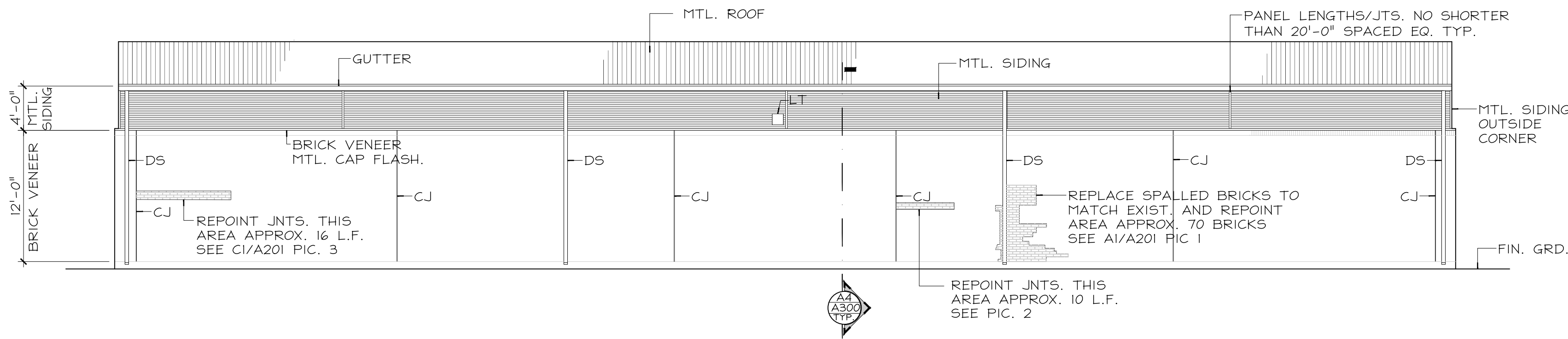
C1 NORTH ELEVATION
A200 SCALE: 1/8" = 1'-0"



B1 EAST ELEVATION
A200 SCALE: 1/8" = 1'-0"



B4 WEST ELEVATION
A200 SCALE: 1/8" = 1'-0"



A1 SOUTH ELEVATION
A200 SCALE: 1/8" = 1'-0"

GENERAL NOTES:

1. FOR ALL SIDING TRIMS, USE MANUFACTURES STANDARD DETAILS, PRODUCTS COLOR MATCHING SIDING.
2. GUTTERS, DOWN SPOUTS, RAKE AND FASCIA SHALL BE PER ROOF PANEL MANUFACTURER.

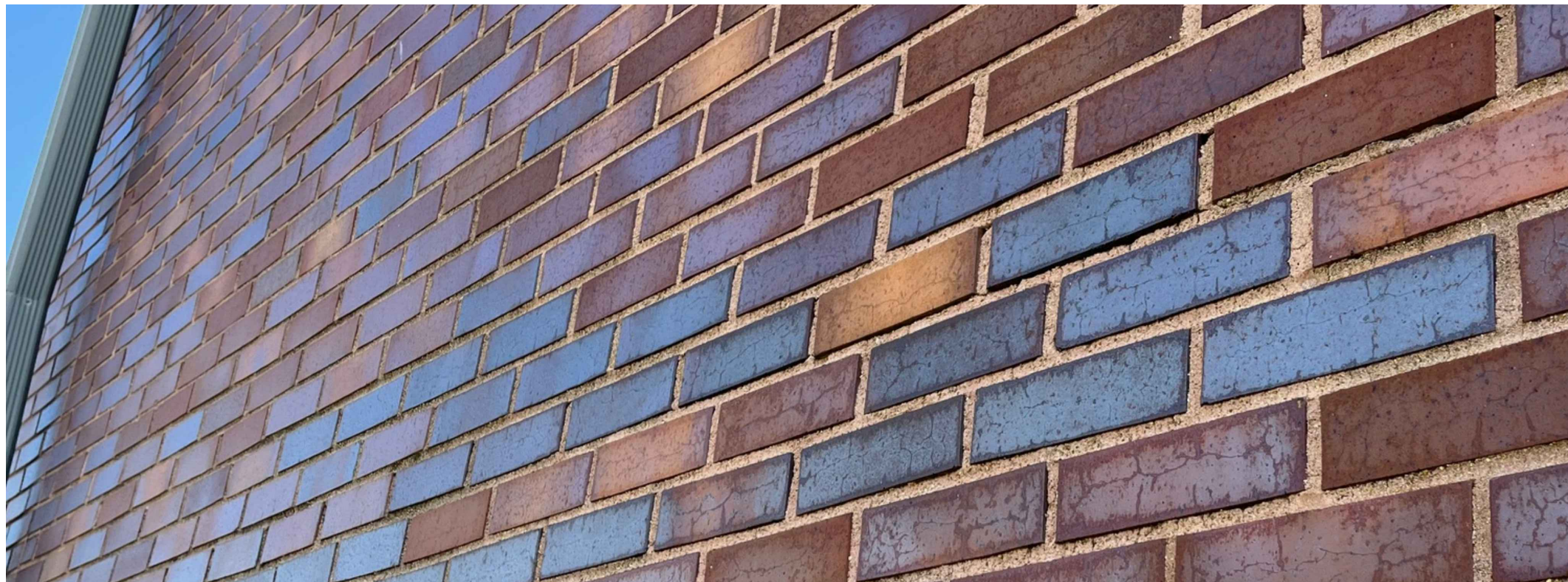
EXTERIOR ELEVATION SCOPE OF WORK:

1. REMOVE AND REPLACE SEALANT, INCLUDING BACKER ROD, IN ALL CONTROL JOINTS (CJ).
2. REMOVE AND REPLACE ALL SEALANT AROUND DOORS, WALL PENETRATIONS, I.E., PIPES, CONDUITS, ETC.
3. REMOVE AND REPLACE ALL GUTTERS AND DOWNSPOUTS (DS). SEE SPECIFICATION SECTION 074116
4. REMOVE AND REPLACE EXIST. MTL. ROOF WITH INSULATED MTL. ROOF PANELS. SEE SPECIFICATION SECTION 074116.
5. REMOVE AND REPLACE EXIST. MTL. SIDING INCLUDING MTL. BRICK CAP THROUGH WALL FLASH. SEE SPECIFICATION SECTION 074213.13.
6. REPOINT BRICK VENEER IN AREAS AS INDICATED ON THE ELEVATIONS.
7. REMOVE AND REPLACE BRICK IN AREAS AS SHOWN ON THE ELEVATIONS. REPLACE BRICK WITH LIKE AND KIND. SUBMIT SAMPLES TO
8. SEE SHEET A201 FOR BRICK VENEER REERENCE PICTURES.
9. PAINT H.M. DOORS AND FRAMES W/EXTERIOR ALYD PAINT/PRIMER PER MFR'S. SPECIFICATIONS. REPLACE PANIC BARS TO MATCH EXIST. LIKE AND KIND.
10. REMOVE AND REPLACE ALL WEATHER STRIPPING ON OVERHEAD DOORS AND EXTERIOR MAN DOORS WITH LIKE AND KIND.
11. REPLACE EXTERIOR LIGHTS SEE MEP DRAWINGS

ABBREVIATIONS:

CONTROL JOINT - CJ
DOWN SPOUT - DS
FIRE DEPARTMENT CONNECTION - FDC
EXTERIOR LIGHT - LT

D



c1	PIC 3
A201	SCALE: NONE

C



B1	PIC 2
A201	SCALE: NONE

B



A1	PIC 1
A201	SCALE: NONE

A

1

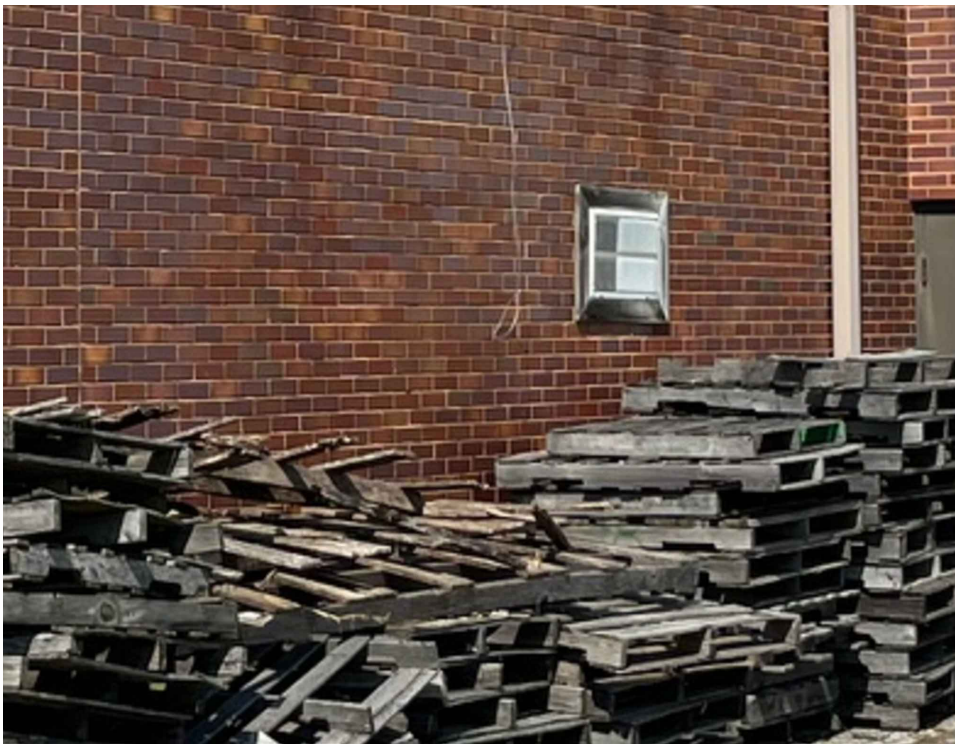
2



C2	PIC 6
A201	SCALE: NONE



B2	PIC 5
A201	SCALE: NONE



A2	PIC 4
A201	SCALE: NONE

3



C4	PIC 9
A201	SCALE: NONE



B4	PIC 8
A201	SCALE: NONE

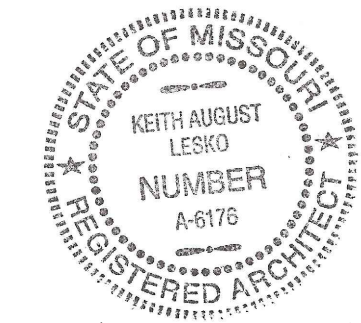


A4	PIC 7
A201	SCALE: NONE

4

5

STATE OF MISSOURI
MIKE KEHOE,
GOVERNOR



Keith A. Lesko
DATE: 07/24/2025
KEITH A. LESKO
ARCHITECT A-6176

OFFICE OF THE
ADJUTANT GENERAL

MISSOURI NATIONAL GUARD
FACILITIES DIVISION

OFFICE OF ADMINISTRATION
DIVISION OF FACILITIES
MANAGEMENT,
DESIGN AND CONSTRUCTION

OFFICE OF THE
ADJUTANT GENERAL

MISSOURI NATIONAL GUARD
FACILITIES DIVISION

ST. LOUIS READINESS
CENTER LAMBERT FIELD
BUILDING RENOVATIONS

BUILDING 231
10800 INTERNATIONAL BLVD.
BRIDGETON, ST. LOUIS COUNTY,
MISSOURI

PROJECT # T242401
ASSET # 8136280001
SITE # 6280

REVISION: _____
DATE: _____
REVISION: _____
DATE: _____
REVISION: _____
DATE: _____

ISSUE DATE: 07/24/2025

CAD DWG FILE: _____
DRAWN BY: KAL
CHECKED BY: KAL
DESIGNED BY: KAL

SHEET TITLE:

ELEVATION PICTURES

SHEET NUMBER:

A201

SHEET 4 OF 9
DATE 07/24/2025

D

C

B

A

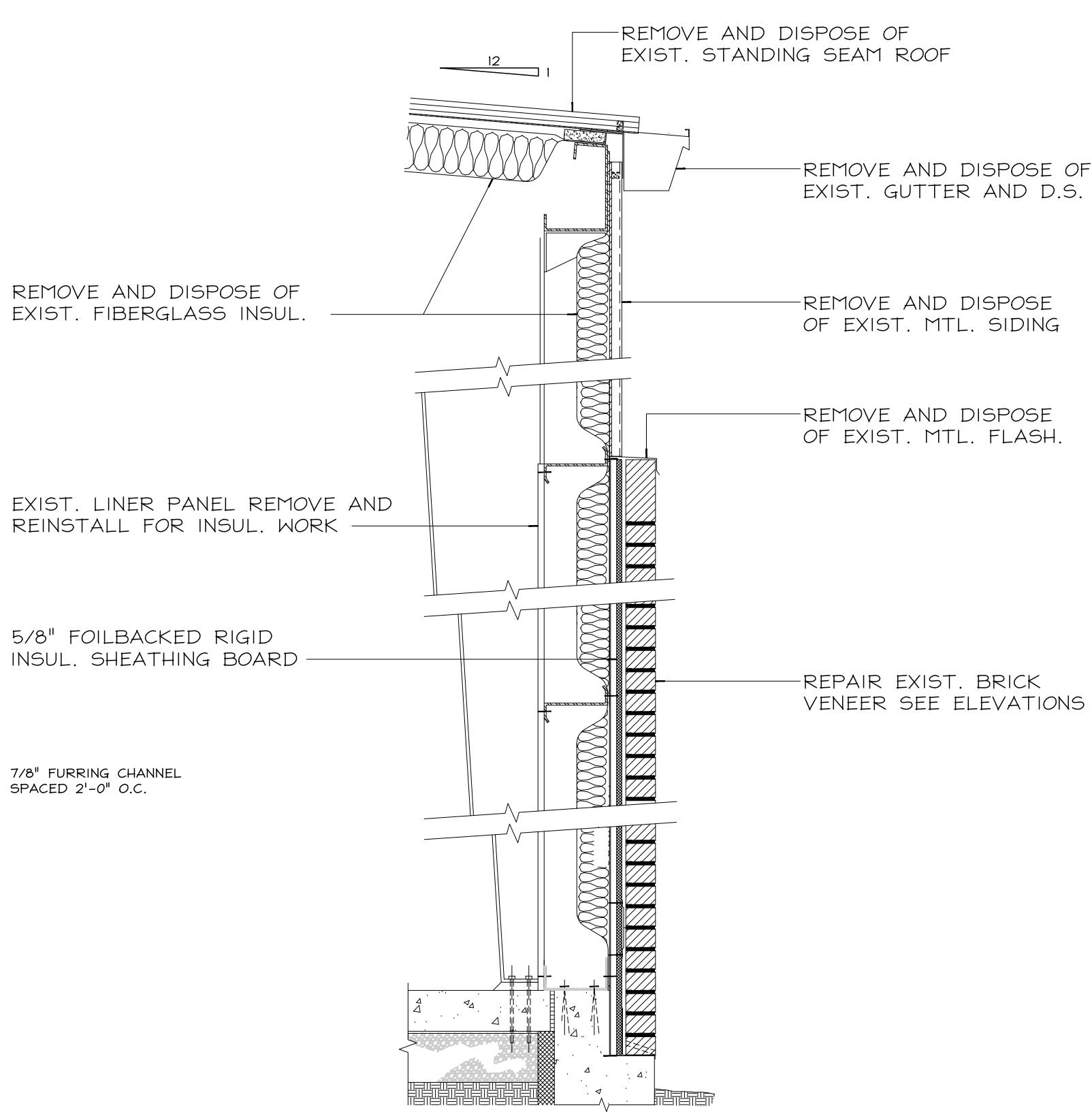
I

2

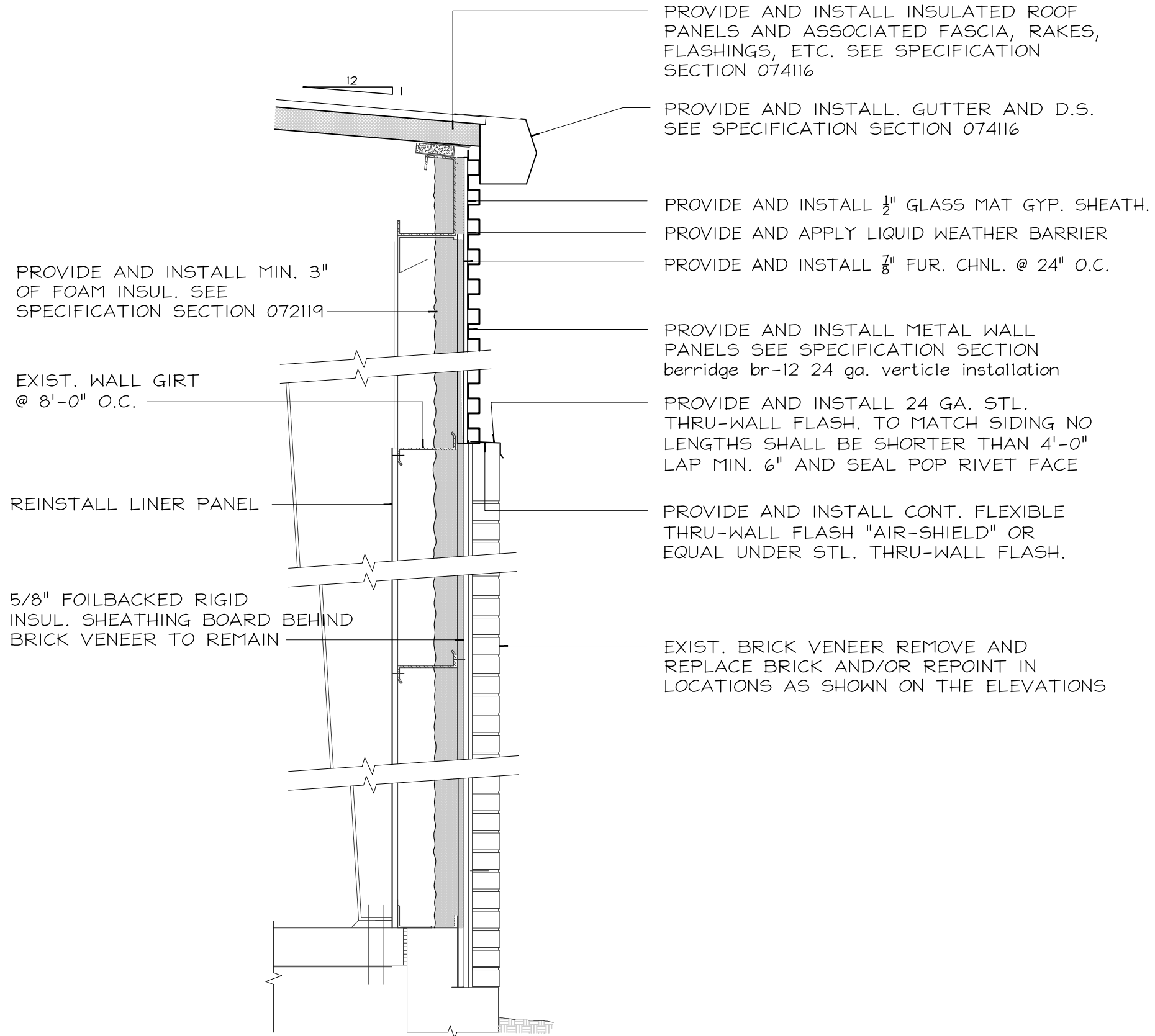
3

4

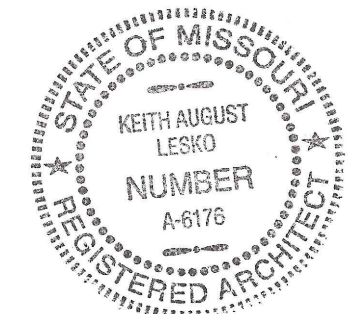
5



A1 TYP. EXIST. WALL SECT.
A300 SCALE: $\frac{3}{4}" = 1'-0"$



A4 TYP. WALL SECT. PROPOSED WORK
A300 SCALE: $\frac{3}{4}" = 1'-0"$



Keith A. Lesko
DATE: 07/24/2025
KEITH A. LESKO
ARCHITECT A-6176

OFFICE OF THE
ADJUTANT GENERAL

MISSOURI NATIONAL GUARD
FACILITIES DIVISION

OFFICE OF ADMINISTRATION
DIVISION OF FACILITIES
MANAGEMENT,
DESIGN AND CONSTRUCTION

OFFICE OF THE
ADJUTANT GENERAL

MISSOURI NATIONAL GUARD
FACILITIES DIVISION

**ST. LOUIS READINESS
CENTER LAMBERT FIELD
BUILDING RENOVATIONS**

BUILDING 231
10800 INTERNATIONAL BLVD.
BRIDGETON, ST. LOUIS COUNTY,
MISSOURI

PROJECT # T242401
ASSET # 8136280001
SITE # 6280

REVISION: _____
DATE: _____
REVISION: _____
DATE: _____
REVISION: _____
DATE: _____
ISSUE DATE: 07/24/2025

CAD DWG FILE: _____
DRAWN BY: KAL
CHECKED BY: KAL
DESIGNED BY: KAL

SHEET TITLE:

WALL SECTIONS
DETAILS

SHEET NUMBER:

A300

SHEET 5 OF 9
DATE 07/24/2025

3 CONNECT TO EXISTING GAS PIPE.

	WASTE PIPING	
	VENT PIPING	
	VENT PIPING OVER WASTE PIPING	
	COLD WATER PIPING	
	HOT WATER PIPING	
	GAS PIPING	
	PIPE FITTINGS (ELL DOWN - TEE DOWN - TEE UP)	
	VALVE	- CHECK VALVE
	UNION	- STRAINER
	GAS COCK	- BALANCING COCK
	AIR TERMINAL TAG. "A" INDICATES CFM ON GRILLE AND REGISTER SCHEDULE. "200" INDICATES AIR VOLUME IN CFM. "12x12" INDICATES FACE SIZE.	
	AIR TERMINALS (REGISTER - GRILLE)	
	FIRE DAMPER	
	SMOKE DAMPER	
	MANUAL DAMPER	
	MOTORIZED DAMPER	
	THERMOSTAT - HUMIDISTAT (ZONE SUBSCRIPT)	
WST	V	WASTE - VENT
CO	VTR	CLEAN OUT - VENT THROUGH ROOF
SA	RA	SUPPLY AIR - RETURN AIR
FA	EA	FRESH AIR - EXHAUST AIR
N/E	E/R	NEW CONNECTS TO EXISTING - EXISTING TO REMAIN
	PENDANT MOUNTED SPRINKLER HEAD	
	UPRIGHT MOUNTED SPRINKLER HEAD	
	PENDANT HEAD BELOW / UPRIGHT HEAD ABOVE	
	SIDEWALL SPRINKLER HEAD	
	EXTENDED COVERAGE SIDEWALL SPRINKLER HEAD	



UNIT HEATERS												
MARK	QTY	HGT BTU IN	HGT BTU OUT	TOTAL CLG	SENS CLG	CFM @ 0.5"	O.A. CFM	V / Ø	FLA	MOCIP	MODEL	REMARKS
UH1		45,000	37350	-	-	-		120 / 1	2.4	20	-	1.2
ROOM AIR CONDITIONERS												
MARK	QTY	HGT KW IN	HGT BTU OUT	TOTAL CLG	SENS CLG	CFM @ 0.5"	O.A. CFM	V / Ø	FLA	MOCIP	MODEL	REMARKS
RAC	-	3.5	11,935	9,000	6,750	-	-	208 / 1	16.9	15	-	1
VENTILATION FANS												
MARK	QTY	CFM	ESP	DRIVE	RPM	SONES	HP	V / Ø	WATTS	MOCIP	MODEL	REMARKS
VF1	-	15,000	0.250"	BELT	649	21.7	2	208 / 3	-	20	-	1.3
CEILING FANS												
MARK	QTY	CFM	ESP	DRIVE	RPM	SONES	HP	V / Ø	WATTS	MOCIP	MODEL	REMARKS
CF1	-	94,965	--	DIRECT	102	-	-	208 / 1	-	20	-	1.2
*ALL INFORMATION SHALL BE VERIFIED WITH MANUFACTURES LATEST EQUIPMENT CUT-SHEETS **IF QUANTITY COLUMN IS LEFT BLANK REFER TO PLANS. VERIFY WITH PLANS ALL QUANTITIES OF FIXTURES. 1. ALL FIXTURES ARE AS APPROVED EQUAL BY SUBMITTAL. 2. WITH PROGRAMMABLE STAT 3. CONTROLLED VIA WALL SWITCH. WITH 52"x52" LOUVER/DAMPER, ACTUATOR, AND END SWITCH FOR VF1.												



SCALE: NO SCALE

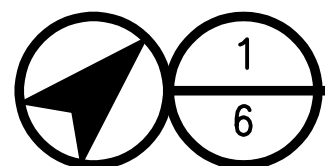
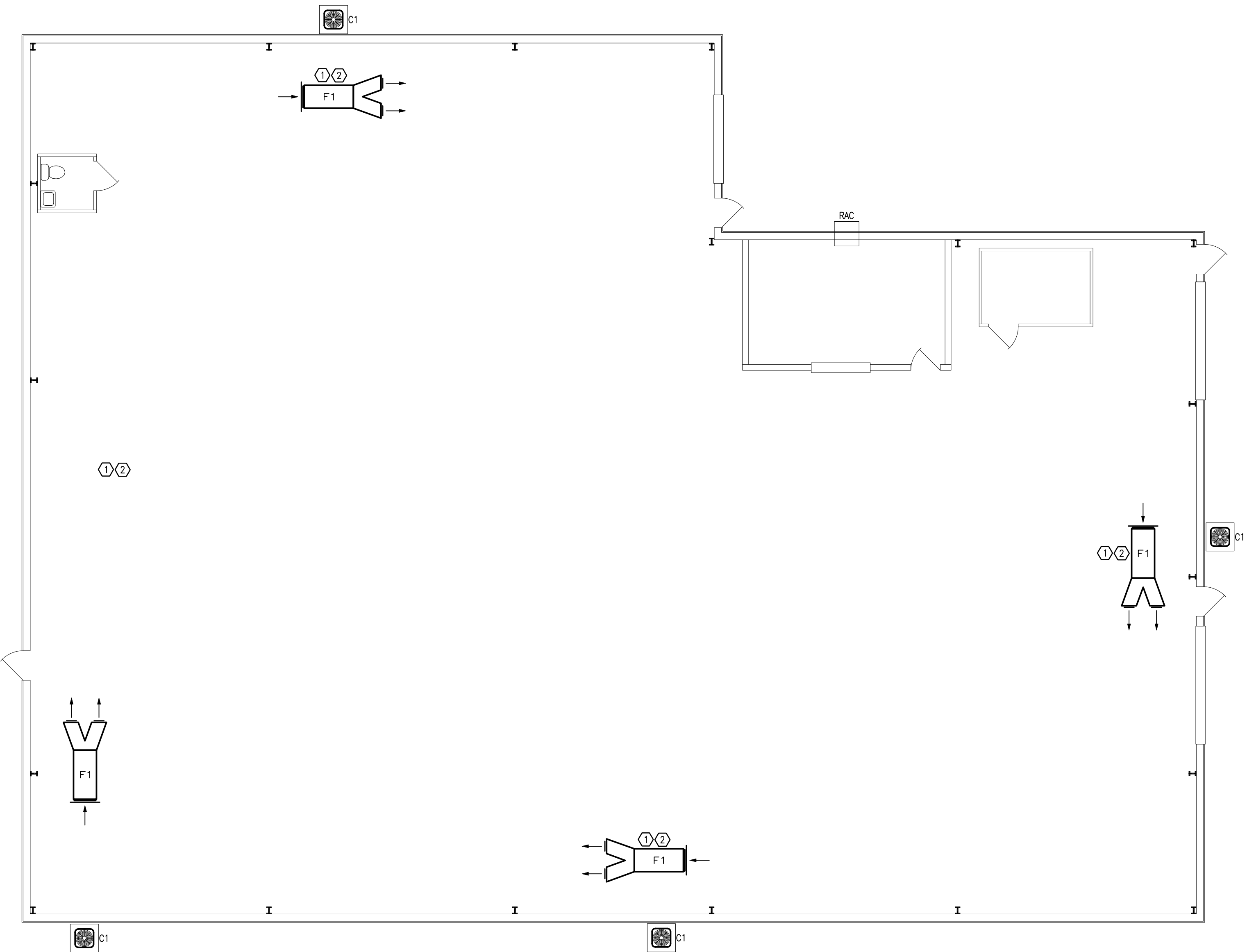
T:\Job\23160\23160.dwg, 7/24/2025 8:46:07 AM, ThomK

D

C

B

A



HVAC PLAN

SCALE: 1/8" = 1'-0"

HVAC EQUIPMENT SCHEDULE

GOODMAN FURNACES / CONDENSING UNITS (ALT. CARRIER, LENNOX, YORK, OR APPROVED EQUAL)

MARK	QTY	HTG BTU IN	HTG BTU OUT	TOTAL CLG	SENS CLG	CFM @ 0.5"	O.A. CFM	V / #	FLA	MOCP	WEIGHT	DIMENSIONS	MODEL	REMARKS
F1	-	60,000	54,000	24,000	18,000	800	160	120 / 1	7.8	20	117 LB	18"x29"x35"	GMVC960603BNA	1,2,3
C1	-							208 / 1	8.4	20	126 LB	26"x26"x28"	GSK140241L	1,2

CEILING FANS

MARK	QTY	CFM	ESP	DRIVE	RPM	SONES	HP	V / #	WATTS	MOCP	WEIGHT	DIMENSIONS	MODEL	REMARKS
CF1	-	94,985	--	DIRECT	102	-	-	208 / 1	-	20	-	-	-	1

*ALL INFORMATION SHALL BE VERIFIED WITH MANUFACTURES LATEST EQUIPMENT CUT-SHEETS

**IF QUANTITY COLUMN IS LEFT BLANK REFER TO PLANS. VERIFY WITH PLANS ALL QUANTITIES OF FIXTURES.

- ALL FIXTURES ARE AS APPROVED EQUAL BY SUBMITTAL
- WITH PROGRAMMABLE STAT, LO AMBIENT KIT FOR 0° OPERATION.
- INSTALL PLASMA AIR IONIZATION DEVICE MODEL-AUTOCLEAN 1560 ON RETURN SIDE OF UNIT. SET UNIT FAN TO ON DURING OCCUPIED HOURS.

GENERAL NOTES:

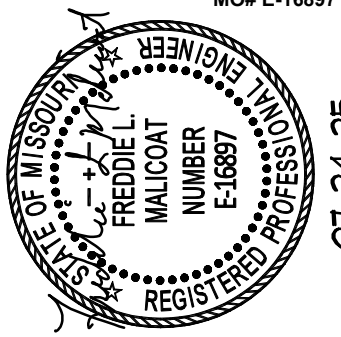
- VERIFY PLUMBING, HVAC, POWER, AND LIGHTING REQUIREMENTS FOR OWNER'S SPECIFIC EQUIPMENT PRIOR TO ROUGH-IN.
- COORDINATE INSTALLATION OF EQUIPMENT WITH MANUFACTURERS' INSTALLATION INSTRUCTIONS PRIOR TO ROUGH-IN.
- CONTRACTOR SHALL MAINTAIN FIRE RATING OF ANY PENETRATION AND SHALL SEAL ANY PENETRATION IN A FLOOR, CEILING, OR EXTERIOR WALL.
- INSTALL A FIRE DAMPER AT EVERY FIRE RATED ASSEMBLY PENETRATION TO MAINTAIN FIRE RATING OF ASSEMBLY.
- VERIFY RECEPTACLE MOUNTING HEIGHTS AND LOCATIONS WITH OWNER AND ARCHITECTURAL ELEVATIONS PRIOR TO ROUGH-IN.
- THERMOSTATS SHALL BE MOUNTED AT 60" (42" ADA) TO CENTER ABOVE FINISHED FLOOR.
- DEMO EXISTING UNIT HEATERS, CAP UNUSED GAS PIPING, AND REMOVE 5 FLUE OPENINGS.

KEYED NOTES:

- ① HUNG FROM CEILING. VENT TO CONCENTRIC VENT KIT THRU WALL/ROOF(USE EXISTING FLUE OPENING). MAINTAIN 10' MINIMUM CLEARANCE FROM FRESH AIR OPENINGS. INSTALL STAINLESS STEEL DRIP GUARD WHEN THRU BRICK WALL. CONNECT TO EXISTING GAS PIPING. MOUNT THERMOSTAT ON COLUMN.
- ② CONNECT TO EXISTING GAS PIPE.

STATE OF MISSOURI
MIKE KEHOE,
GOVERNOR

FREDDIE L. MALICOAT - ENGINEER
MO# E-16897



DATE: 07/11/2025
FREDDIE L. MALICOAT
ENGINEER - MO# E-16897

OFFICE OF THE
ADJUTANT GENERAL

MISSOURI NATIONAL GUARD
FACILITIES DIVISION

OFFICE OF ADMINISTRATION
DIVISION OF FACILITIES
MANAGEMENT,
DESIGN AND CONSTRUCTION

OFFICE OF THE
ADJUTANT GENERAL

MISSOURI NATIONAL GUARD
FACILITIES DIVISION

ST. LOUIS READINESS
CENTER LAMBERT FIELD
BUILDING RENOVATIONS

BUILDING 231
10800 INTERNATIONAL BLVD.
BRIDGETON, ST. LOUIS COUNTY,
MISSOURI

PROJECT # T242401
ASSET # 8136280001
SITE # 6280

REVISION: _____
DATE: _____
REVISION: _____
DATE: _____
REVISION: _____
DATE: _____

ISSUE DATE: 07/24/2025

CAD DWG FILE: 23160.dwg
DRAWN BY: FM
CHECKED BY: FM
DESIGNED BY: FM

SHEET TITLE:

HVAC PLAN

SHEET NUMBER:

M102

SHEET 7 OF 9
DATE 07/24/2025

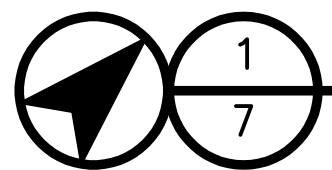
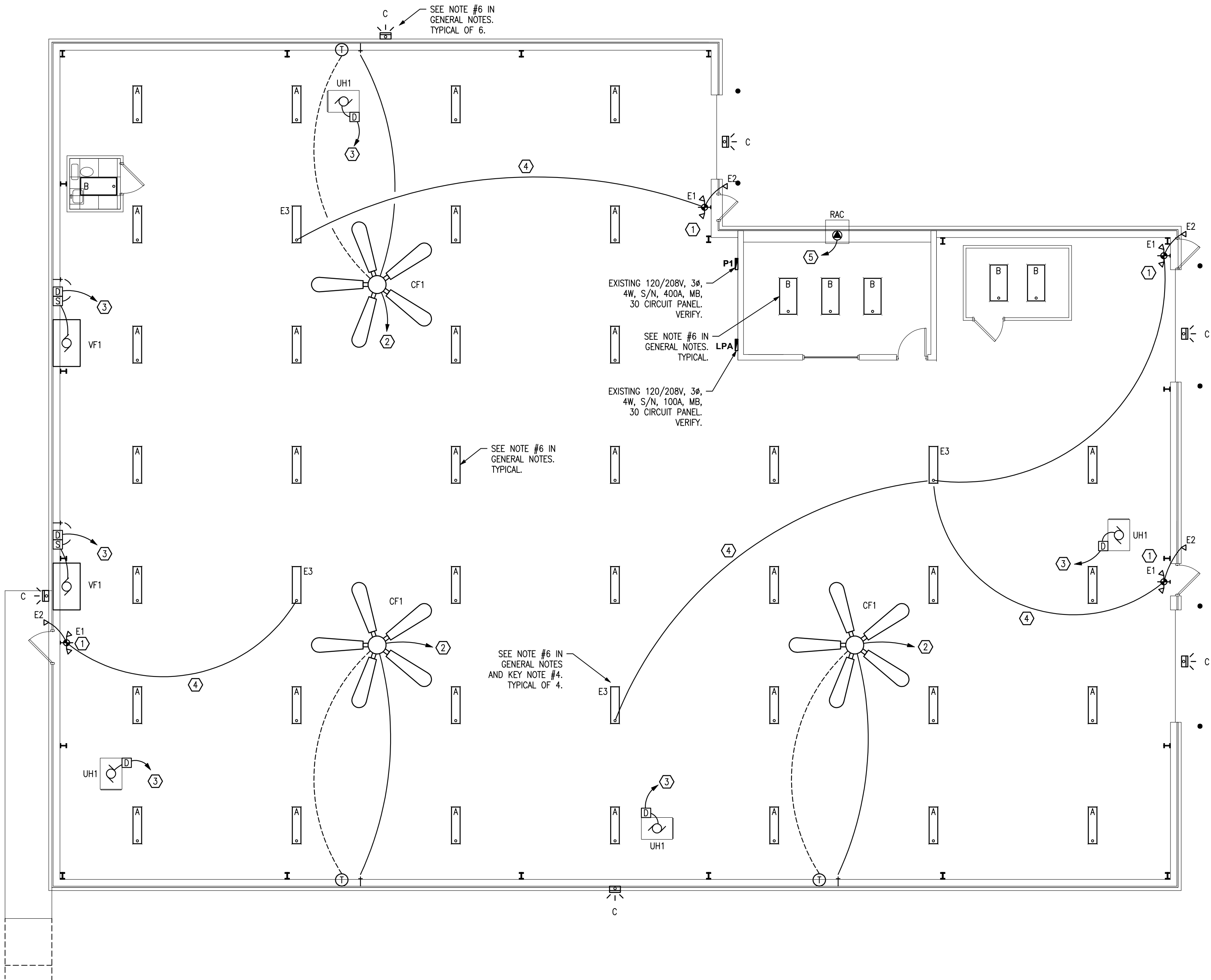
T:\Job\23160\23160.dwg, 7/24/2025 8:46:07 AM, ThomK

A

B

C

D



ELECTRICAL PLAN (ALT. #1)

SCALE: 1/8" = 1'-0"

GENERAL NOTES:

1. VERIFY PLUMBING, HVAC, POWER, AND LIGHTING REQUIREMENTS FOR OWNER'S SPECIFIC EQUIPMENT PRIOR TO ROUGH-IN.
2. COORDINATE INSTALLATION OF EQUIPMENT WITH MANUFACTURERS' INSTALLATION INSTRUCTIONS PRIOR TO ROUGH-IN.
3. CONTRACTOR SHALL MAINTAIN FIRE RATING OF ANY PENETRATION AND SHALL SEAL ANY PENETRATION IN A FLOOR, CEILING, OR EXTERIOR WALL.
4. VERIFY RECEPTACLE MOUNTING HEIGHTS AND LOCATIONS WITH OWNER AND ARCHITECTURAL ELEVATIONS PRIOR TO ROUGH-IN.
5. LIGHT SWITCHES SHALL BE MOUNTED AT 42" TO CENTER ABOVE FINISHED FLOOR.
6. REPLACE EXISTING LIGHT WITH NEW LIGHT FIXTURE. CONNECT TO EXISTING LIGHTING CIRCUIT.

KEYED NOTES:

- ① REPLACE IN PLACE WITH NEW EXIT/EMERGENCY LIGHT. CONNECT TO EXISTING CONTINUOUSLY POWERED CIRCUIT.
- ② CONNECT TO NEW 20A-1P BREAKER IN EXISTING ELECTRICAL PANEL. VERIFY LOCATION, SPACE, AND CAPACITY.
- ③ CONNECT TO EXISTING CIRCUIT FROM OLD EQUIPMENT IN THE SAME AREA.
- ④ PROVIDE EXTRA CONDUCTOR AND CONNECT TO EXISTING CONTINUOUSLY POWERED CIRCUIT FOR EMERGENCY LIGHTS.
- ⑤ CONNECT TO NEW 30A-2P BREAKER IN EXISTING ELECTRICAL PANEL, 2#10, 1#10G. VERIFY LOCATION, SPACE, AND CAPACITY.

ELECTRICAL SYMBOL SCHEDULE

	P2-22,24 HOME RUN CIRCUIT TO PANEL P2, CIRCUITS 22,24
	EACH ARROW INDICATES ONE CIRCUIT
	SHORT HATCH MARKS INDICATE # OF PHASE CONDUCTORS
	LONG HATCH MARKS INDICATE # OF NEUTRAL CONDUCTORS
	NO HATCH MARK INDICATES TWO CONDUCTORS
	ELECTRICAL SERVICE OR FEEDER WIRING
	WIRING IN WALL OR CEILING - WIRING IN FLOOR
	RECEPTACLE OUTLET (DUPLEX - QUADRUPLEX - SPECIAL POWER)
	COMMUNICATIONS OUTLET (TELEPHONE - CATV - DATA/PHONE)
	WALL SWITCH (3-WAY - DIMMER - 4-WAY - PILOT - SPEED - KEYED - TIMER - OCCUPANCY)
	LED STYLE LIGHT FIXTURE (CEILING MOUNTED - WALL MOUNTED)
	LED STYLE LIGHT FIXTURE (ENCLOSED - STRIP) (S INDICATES SPLIT WIRED)
	EXIT LIGHT - EMERGENCY LIGHT - EMERGENCY/EXIT LIGHT
	OTHER RECEPTACLE OUTLET (CLOCK - FLOOR - SPLIT WIRED)
	ELECTRIC PANEL
	SPEAKER - PUSH TO TALK
	JUNCTION BOX - PULL BOX
	DISCONNECT (FUSED - NONFUSED)
	STARTER - CONTACTOR
	ELECTRIC MOTOR (5 HP - 208V - 3 PHASE)
	THERMOSTAT - HUMIDISTAT (ZONE SUBSCRIPT)
	OUTLET MODIFIERS (MOUNT HEIGHT INCHES - GFI PROTECTED - WEATHER PROOF GFI - USB)
	SMOKE DETECTOR - HEAT DETECTOR - DUCT DETECTOR - MANUAL PULL STATION
	AUDIO VISUAL - VISUAL
	MAGNETIC DOOR HOLDER - INTERLOCK RELAY
	END OF LINE RESISTOR
	FIRE ALARM CONTROL PANEL
	DIALER

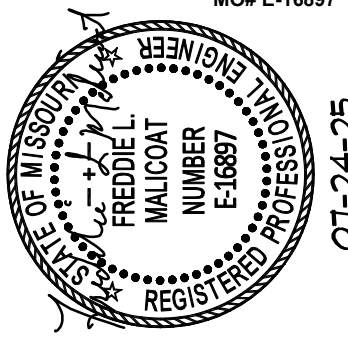
LIGHTING FIXTURE SCHEDULE

MARK	MANUFACTURER AND MODEL NUMBER	TYPE	LAMPS	MOUNTING	REMARKS
	(Basis of Design)		# SIZE		
A	METALUX 4MB-SSL-RNDU-UNV-L840-CD-U	LED	1 48.1	PENDANT	1,7
B	METALUX 24GR-LD5-64-F1-UNV-L840-CD1-U	LED	1 35	-	1,2,8
C	LUMARK WPSLED15S	LED	1 57.2	WALL	1,4,5
E1	SURE-LITES LPXC25R3	LED	2 1.1	SURFACE	1,3
E2	SURE-LITES SRP13WH	LED	1 1.25	SURFACE	1,5
E3	METALUX 4MB-SSL-RNDU-UNV-L840-CD-EL14WSD-U	LED	1 48.1	PENDANT	1,6,7

VERIFY COLOR AND MOUNTING HEIGHT WITH ARCHITECTURAL PLANS.
1. OR APPROVED EQUAL.
2. DRYWALL FRAME-IN KIT DF-24W-U FOR FIXTURES IN OFFICE.
3. REMOTE HEADS AS SHOWN.
4. CONTROLLED VIA EXISTING LIGHTING CONTACTOR
5. WET LOCATION APPROVED.
6. WITH EMERGENCY BATTERY BACKUP.
7. MOUNT AT 16'-0" AFF.
8. SURFACE MOUNT KIT SK-24-WS FOR FIXTURES IN VAULT.

STATE OF MISSOURI
MIKE KEHOE,
GOVERNOR

FREDDIE L. MALICOAT - ENGINEER
MO# E-16897



DATE: 07/11/2025
FREDDIE L. MALICOAT
ENGINEER - MO# E-16897

OFFICE OF THE
ADJUTANT GENERAL

MISSOURI NATIONAL GUARD
FACILITIES DIVISION

OFFICE OF ADMINISTRATION
DIVISION OF FACILITIES
MANAGEMENT,
DESIGN AND CONSTRUCTION

OFFICE OF THE
ADJUTANT GENERAL

MISSOURI NATIONAL GUARD
FACILITIES DIVISION

ST. LOUIS READINESS
CENTER LAMBERT FIELD
BUILDING RENOVATIONS

BUILDING 231
10800 INTERNATIONAL BLVD.
BRIDGETON, ST. LOUIS COUNTY,
MISSOURI

PROJECT # T242401
ASSET # 8136280001
SITE # 6280

REVISION: _____
DATE: _____
REVISION: _____
DATE: _____
REVISION: _____
DATE: _____

ISSUE DATE: 07/24/2025

CAD DWG FILE: 23160.dwg
DRAWN BY: FM
CHECKED BY: FM
DESIGNED BY: FM

SHEET TITLE:

ELECTRICAL PLAN Alt 1

SHEET NUMBER:

E101

SHEET 8 OF 9
DATE 07/24/2025

T:\Job\23160\23160.dwg, 7/24/2025 8:46:04 AM, ThomK

D

C

B

A

1

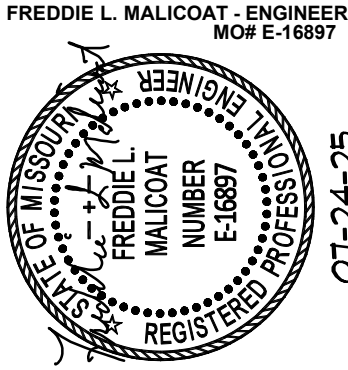
2

3

4

5

STATE OF MISSOURI
MIKE KEHOE,
GOVERNOR



DATE: 07/11/2025
FREDDIE L. MALICOAT
ENGINEER - MO# E-16897

OFFICE OF THE
ADJUTANT GENERAL

MISSOURI NATIONAL GUARD
FACILITIES DIVISION

OFFICE OF ADMINISTRATION
DIVISION OF FACILITIES
MANAGEMENT,
DESIGN AND CONSTRUCTION

OFFICE OF THE
ADJUTANT GENERAL

MISSOURI NATIONAL GUARD
FACILITIES DIVISION

ST. LOUIS READINESS
CENTER LAMBERT FIELD
BUILDING RENOVATIONS

BUILDING 231
10800 INTERNATIONAL BLVD.
BRIDGETON, ST. LOUIS COUNTY,
MISSOURI

PROJECT # T242401
ASSET # 8136280001
SITE # 6280

REVISION: _____
DATE: _____
REVISION: _____
DATE: _____
REVISION: _____
DATE: _____

ISSUE DATE: 07/24/2025

CAD DWG FILE: 23160.dwg
DRAWN BY: FM
CHECKED BY: FM
DESIGNED BY: FM

SHEET TITLE:

ELECTRICAL
PLAN Base Bid

SHEET NUMBER:

E102

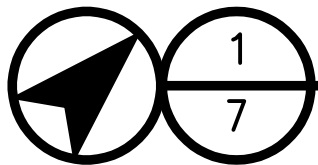
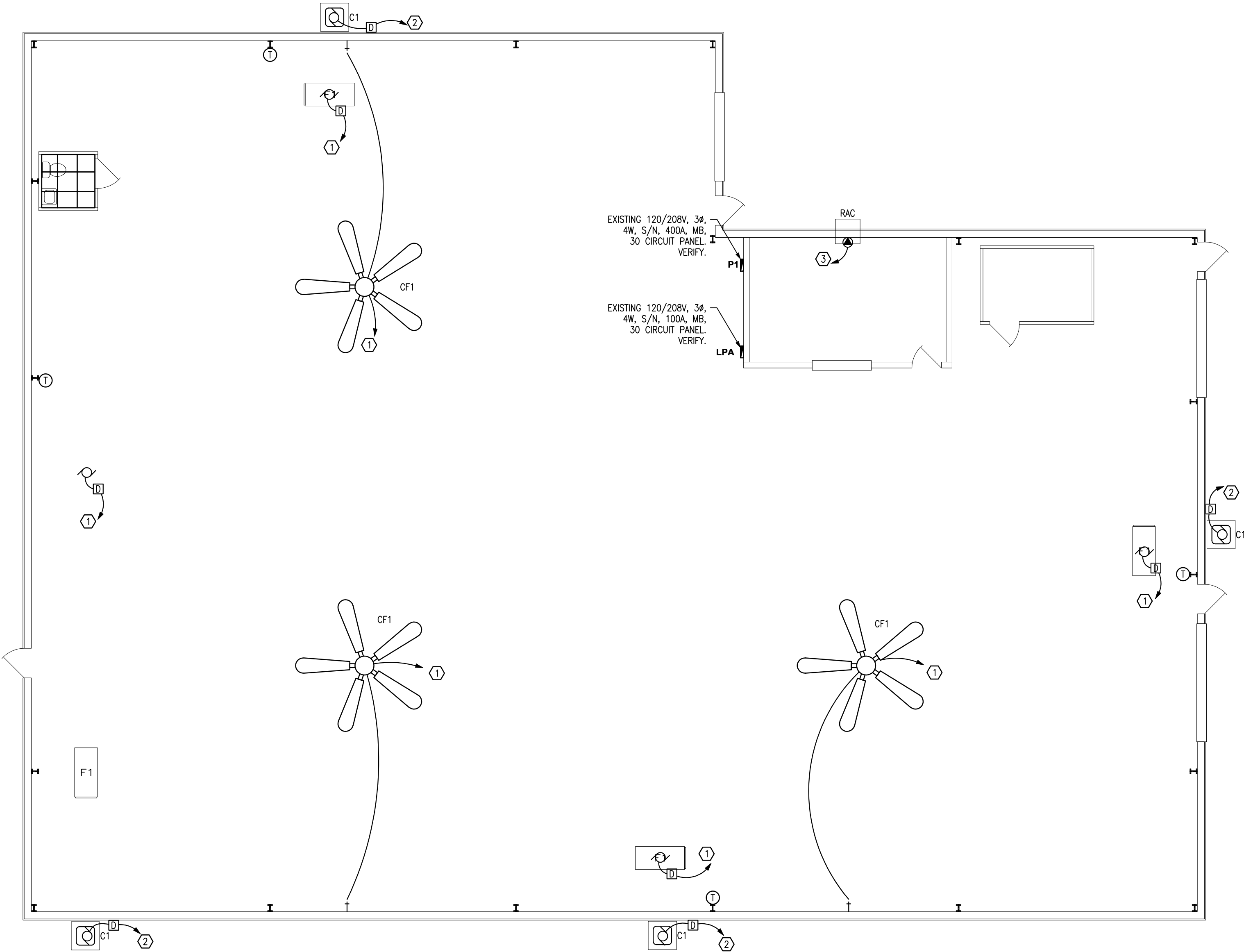
SHEET 9 OF 9
DATE 07/24/2025

GENERAL NOTES:

1. VERIFY PLUMBING, HVAC, POWER, AND LIGHTING REQUIREMENTS FOR OWNER'S SPECIFIC EQUIPMENT PRIOR TO ROUGH-IN.
2. COORDINATE INSTALLATION OF EQUIPMENT WITH MANUFACTURERS' INSTALLATION INSTRUCTIONS PRIOR TO ROUGH-IN.
3. CONTRACTOR SHALL MAINTAIN FIRE RATING OF ANY PENETRATION AND SHALL SEAL ANY PENETRATION IN A FLOOR, CEILING, OR EXTERIOR WALL.
4. VERIFY RECEPTACLE MOUNTING HEIGHTS AND LOCATIONS WITH OWNER AND ARCHITECTURAL ELEVATIONS PRIOR TO ROUGH-IN.
5. LIGHT SWITCHES SHALL BE MOUNTED AT 42" TO CENTER ABOVE FINISHED FLOOR.
6. REPLACE EXISTING LIGHT WITH NEW LIGHT FIXTURE. CONNECT TO EXISTING LIGHTING CIRCUIT.

KEYED NOTES:

- ① CONNECT TO NEW 20A-1P BREAKER IN EXISTING ELECTRICAL PANEL. VERIFY LOCATION, SPACE, AND CAPACITY.
- ② CONNECT TO NEW 20A-2P BREAKER IN EXISTING ELECTRICAL PANEL. VERIFY LOCATION, SPACE, AND CAPACITY.
- ③ CONNECT TO NEW 30A-2P BREAKER IN EXISTING ELECTRICAL PANEL. WIRE SIZE: 2-#10, 1-#10 GROUND. VERIFY LOCATION, SPACE, AND CAPACITY.



ELECTRICAL PLAN (BASE BID)

SCALE: 1/8" = 1'-0"