

CONCRETE PARKING IMPROVEMENTS

RICHMOND READINESS CENTER

RICHMOND, MISSOURI

OWNER: STATE OF MISSOURI
MIKE KEHOE,
GOVERNOR

DEPARTMENT OF THE MISSOURI NATIONAL GUARD
OFFICE OF THE ADJUTANT GENERAL
FACILITIES MANAGEMENT OFFICE

PROJECT
MANAGEMENT: DEPARTMENT OF THE MISSOURI NATIONAL GUARD
OFFICE OF THE ADJUTANT GENERAL
FACILITIES MANAGEMENT OFFICE



SHEET INDEX:	
G-001	COVER SHEET
C-101	EXISTING SITE PLAN
C-102	SITE PLAN
C-103	GRADING PLAN
E-101	LIGHTING PLAN
C-501	DETAIL SHEET

DESIGNER: MITCH STROTHER PE
MISSOURI ARMY NATIONAL GUARD

PROJECT NUMBER: T252201

SITE NUMBER: 6266
ASSET NUMBER: 8136266001



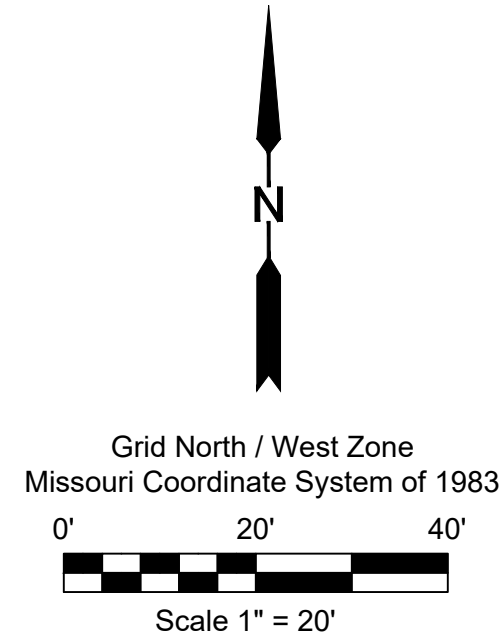
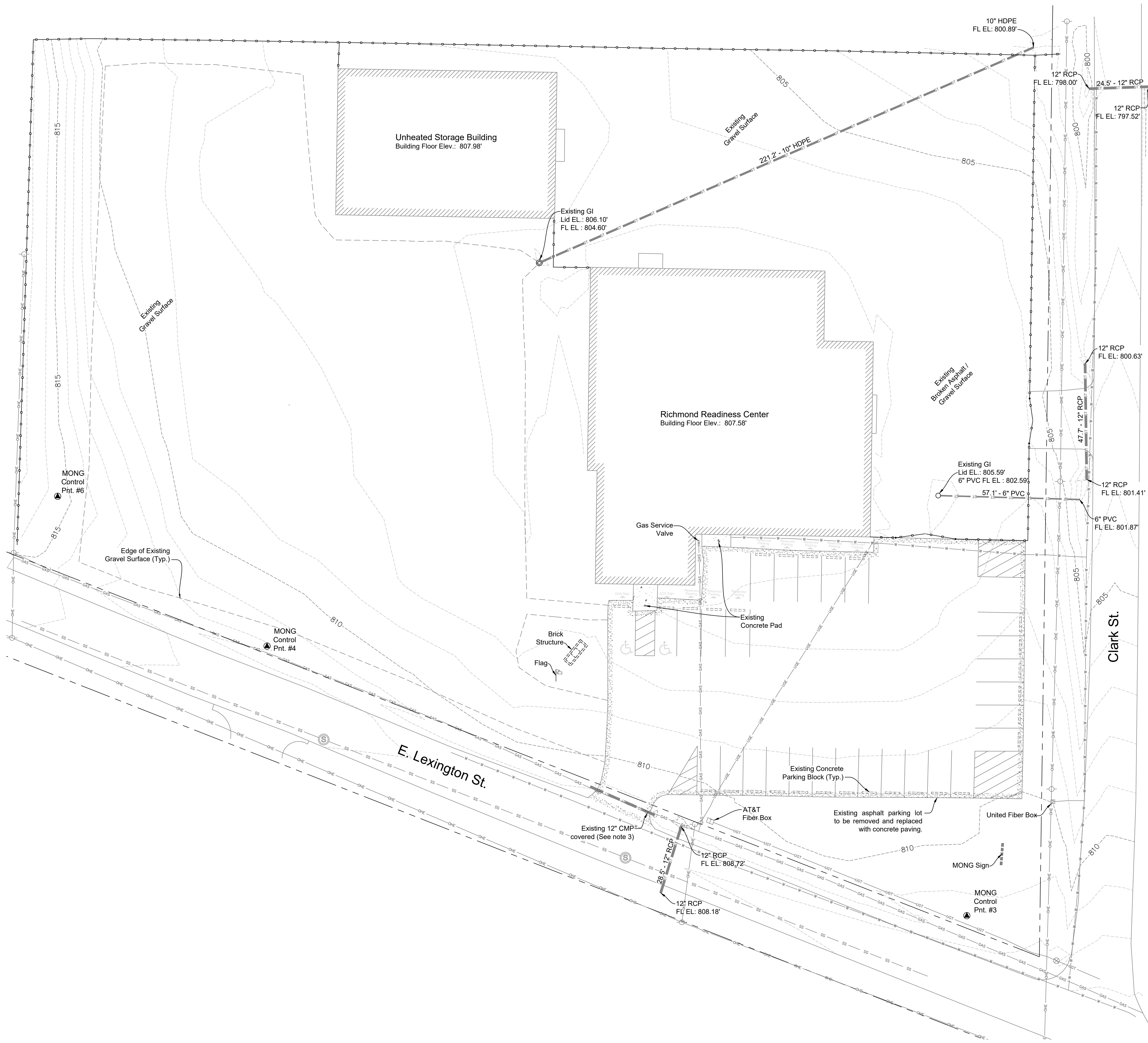
PROJECT LOCATION
ADDRESS:
860 EAST LEXINGTON STREET
RICHMOND, MO 64085
UNITED STATES

COORDINATES:
39.273, -93.958

SHEET NUMBER:

G-001

1 OF 6 SHEETS
July 16, 2025

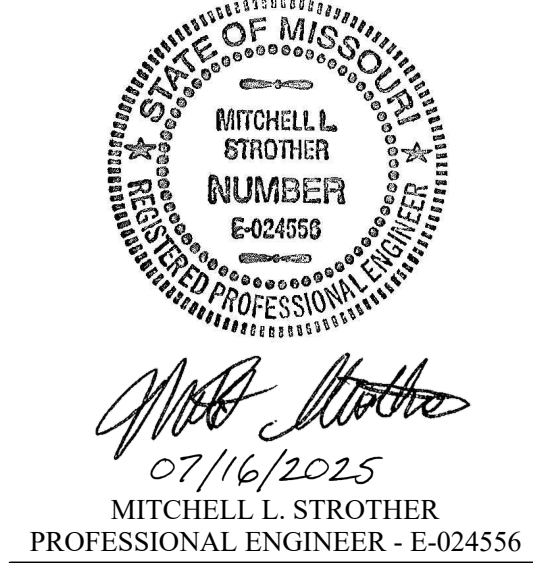


GENERAL NOTES:

- EXISTING UTILITIES DEPICTED ON THESE PLANS ARE BASED ON AVAILABLE SURVEYS AND RECORDS; THEREFORE, LOCATIONS MUST BE CONSIDERED APPROXIMATE ONLY. THERE MAY BE ADDITIONAL UTILITIES, THE EXISTENCE OF WHICH, AT PRESENT, IS NOT KNOWN. VERIFICATION OF THE LOCATIONS OF UNDERGROUND UTILITIES, SHOWN OR NOT SHOWN, UTILITY LOCATES WILL BE REQUIRED PRIOR TO CONSTRUCTION. CONTACT THE MISSOURI ONE CALL SYSTEM AT 1-800-DIG-RITE (1-800-344-7483) PRIOR TO EXCAVATION OR DEMOLITION.
- HORIZONTAL & VERTICAL CONTROL WERE DERIVED FROM THE MISSOURI DEPARTMENT OF TRANSPORTATION'S REAL-TIME NETWORK. THE HORIZONTAL CONTROL IS UTILIZING THE MISSOURI STATE PLANE COORDINATE SYSTEM, WEST ZONE, CONVERTED TO U.S. SURVEY FEET AND THE VERTICAL CONTROL IS BASED FROM NAVD88 DATUM.
- EXISTING 12" CMP IS COVERED. EXISTING CMP IS LOCATED OVER AN EXISTING GAS MAIN AND SHALL BE LEFT IN PLACE.
- CONTRACTOR SHALL REMOVE ALL EXCESS EXCAVATED MATERIAL AND LEGALLY DISPOSE OF OFF OWNERS' SITE.
- CONTRACTOR SHALL REMOVE ALL EXISTING SIGN POSTS DURING DEMOLITION AND INSTALL EXISTING SIGNS ON NEW SIGN POSTS IN THE ORIGINAL LOCATIONS UNLESS NOTED OTHERWISE ON SHEET C-102.

LEGEND

APPROXIMATE RIGHT-OF-WAY LINE	---
EXISTING MAJOR CONTOUR	----- 810
EXISTING MINOR CONTOUR	-----
PROPOSED 7' CHAIN LINK FENCE	-o-o-o-o-o-o-o-
EXISTING WATER MAIN	-W-W-W-W-W-
EXISTING GAS MAIN	-GAS-GAS-GAS-GAS-
EXISTING UNDERGROUND ELECTRIC	-UGE-UGE-UGE-UGE-
EXISTING OVERHEAD ELECTRIC	-OHE-OHE-
EXISTING BURIED TELEPHONE	-UGT-UGT-
EXISTING SANITARY SEWER MAIN	-SS-SS-SS-SS-
EXISTING FIBER BOX	⌈
EXISTING MANHOLE	⊙
EXISTING POWER POLE	⊙
EXISTING WATER VALVE	⊗
EXISTING WATER METER	⊙
EXISTING SIGN	⌈
CONTROL MARK	▲



DEPARTMENT OF THE
MISSOURI NATIONAL GUARD

OFFICE OF THE
ADJUTANT GENERAL

FACILITIES MANAGEMENT
OFFICE

CONCRETE PARKING
IMPROVEMENTS

RICHMOND
READINESS CENTER
860 E. LEXINGTON ST.
RICHMOND, MO 64085

PROJECT # T252201
SITE # 6266
ASSET # 8136266001

REVISION: _____
DATE: _____
REVISION: _____
DATE: _____
REVISION: _____
DATE: _____
ISSUE DATE: 07/16/2025

CAD DWG FILE: POVPARKINGIMP
DRAWN BY: RLH
CHECKED BY: MLS
DESIGNED BY: RLH/MLS

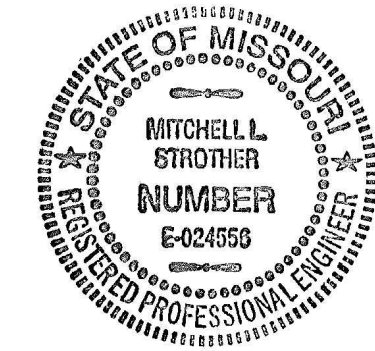
SHEET TITLE:

EXISTING
SITE PLAN

SHEET NUMBER:

C-101

SHEET: 2 OF 6
DATE: 07/16/2025



Mitchell L. Strother
07/16/2025
MITCHELL L. STROTHER
PROFESSIONAL ENGINEER - E-024556



DEPARTMENT OF THE
MISSOURI NATIONAL GUARD

OFFICE OF THE
ADJUTANT GENERAL

FACILITIES MANAGEMENT
OFFICE

CONCRETE PARKING
IMPROVEMENTS

**RICHMOND
READINESS CENTER
860 E. LEXINGTON ST.
RICHMOND, MO 64085**

PROJECT # T252201
SITE # 6266
ASSET # 8136266001

REVISION: _____
DATE: _____
REVISION: _____
DATE: _____
REVISION: _____
DATE: _____
ISSUE DATE: 07/16/2025

CAD DWG FILE: RICHMOND-POV
DRAWN BY: RLH
CHECKED BY: MLS
DESIGNED BY: RLH/MLS

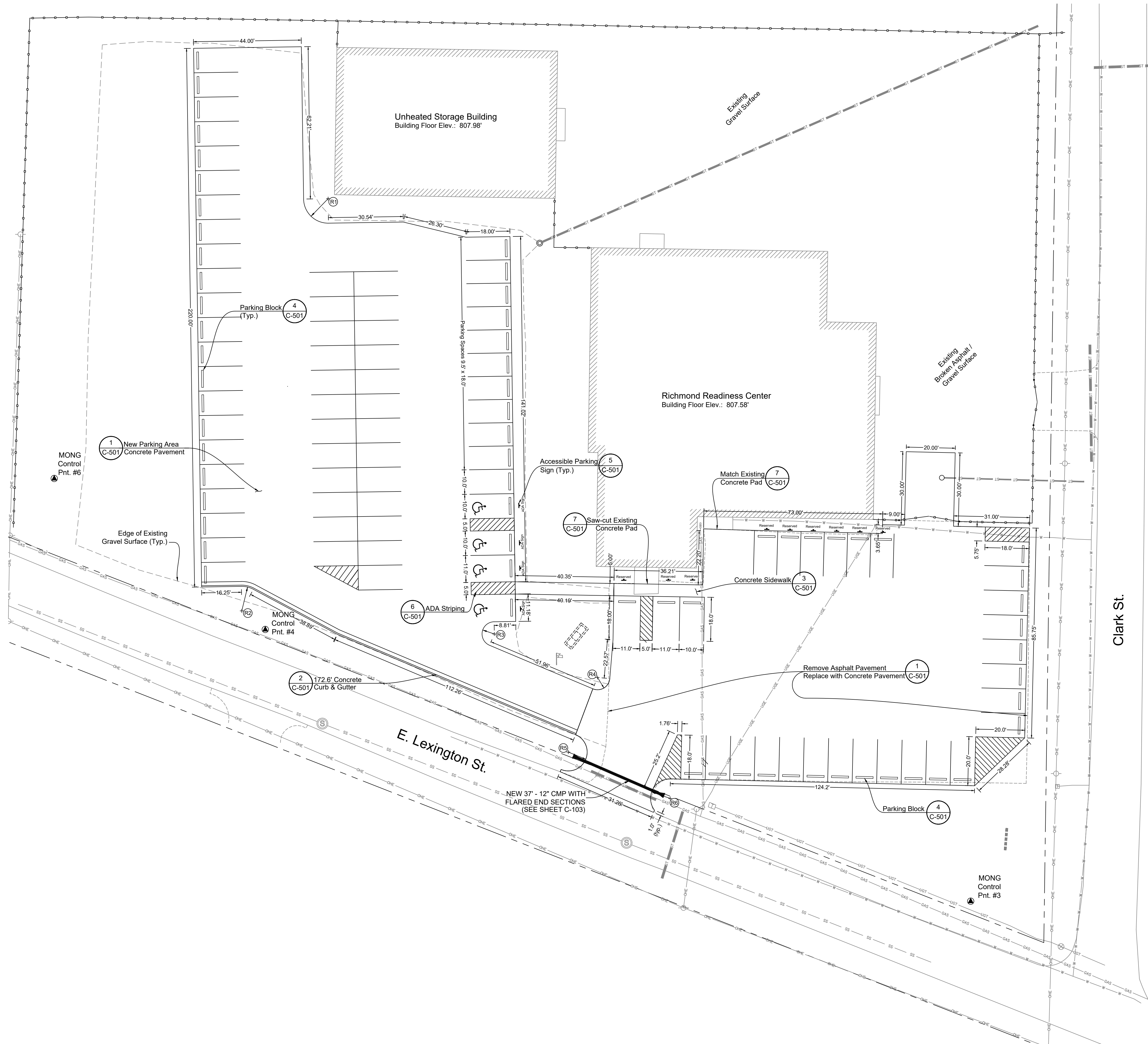
SHEET TITLE:

**POV PARKING
IMPROVEMENTS
SITE PLAN**

SHEET NUMBER:

C-102

SHEET: 3 OF 6
DATE: 07/16/2025



GENERAL NOTES:

- EXISTING UTILITIES DEPICTED ON THESE PLANS ARE BASED ON AVAILABLE SURVEYS AND RECORDS; THEREFORE, LOCATIONS MUST BE CONSIDERED APPROXIMATE ONLY. THERE MAY BE ADDITIONAL UTILITIES, THE EXISTENCE OF WHICH, AT PRESENT, IS NOT KNOWN. VERIFICATION OF THE LOCATIONS OF UNDERGROUND UTILITIES, SHOWN OR NOT SHOWN, UTILITY LOCATES WILL BE REQUIRED PRIOR TO CONSTRUCTION. CONTACT THE MISSOURI ONE CALL SYSTEM AT 1-800-DIG-RITE (1-800-344-7483) PRIOR TO EXCAVATION OR DEMOLITION.
- CONTRACTOR SHALL REMOVE ALL EXCESS EXCAVATED MATERIAL AND LEGALLY DISPOSE OF OFF-SITE.
- HORIZONTAL & VERTICAL CONTROL WERE DERIVED FROM THE MISSOURI DEPARTMENT OF TRANSPORTATION'S REAL-TIME NETWORK. THE HORIZONTAL CONTROL IS UTILIZING THE MISSOURI STATE PLANE COORDINATE SYSTEM, WEST ZONE, CONVERTED TO U.S. SURVEY FEET AND THE VERTICAL CONTROL IS BASED FROM NAVD88 DATUM.
- PROPOSED PARKING SPACES ARE 10' X 18' UNLESS NOTED OTHERWISE.
- CONTRACTOR SHALL REMOVE ALL EXISTING SIGN POSTS DURING DEMOLITION AND INSTALL EXISTING SIGNS ON NEW SIGN POSTS IN THE ORIGINAL LOCATIONS UNLESS NOTED OTHERWISE. ADDITIONAL ADA SIGNS WILL NEED TO BE PURCHASED.
- CONTRACTOR SHALL COORDINATE WITH OWNER AND PROVIDE REASONABLE ACCESS TO PARKING AND BUILDING.

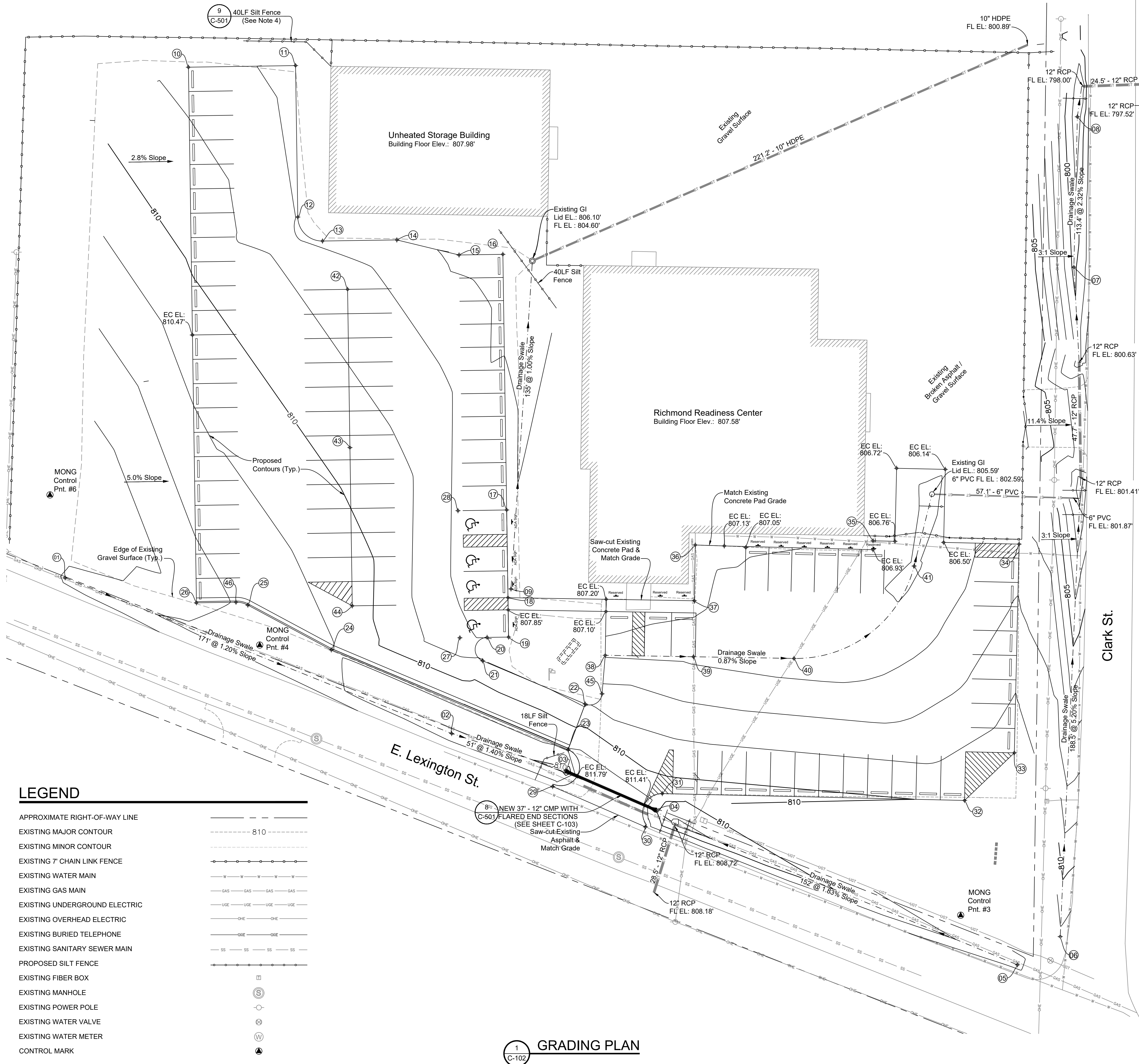
LEGEND

APPROXIMATE RIGHT-OF-WAY LINE	---
PROPOSED 7' CHAIN LINK FENCE	---o---o---o---
EXISTING WATER MAIN	---W---W---W---
EXISTING GAS MAIN	---GAS---GAS---GAS---
EXISTING UNDERGROUND ELEC.	---UG---UG---UG---
EXISTING BURIED TELEPHONE	---UT---UT---UT---
EXISTING SANITARY SEWER MAIN	---SS---SS---SS---
EXISTING FIBER BOX	II
EXISTING MANHOLE	(S)
EXISTING POWER POLE	o
EXISTING WATER VALVE	x
EXISTING WATER METER	(W)
CONTROL MARK	▲

PROJECT CONTROL				
Control Point	Northing	Easting	Elevation	Description
MONG Control #3	1131767.16	2941037.53	811.32	5/8" Rebar w/ "MONG CONTROL MARK" Cap
MONG Control #4	1131878.14	2940749.57	812.16	Spike/Shiner
MONG Control #6	1131939.80	2940663.41	815.58	Spike/Shiner

RADIUS POINTS COORDINATES			
Point	Northing	Easting	Desc.
R1	1132054.06	2940775.22	10' Rad. Pnt.
R2	1131885.73	2940739.97	10' Rad. Pnt.
R3	1131876.28	2940843.06	5' Rad. Pnt.
R4	1131589.20	2940871.35	5' Rad. Pnt.
R5	1131828.06	2940873.27	7.7' Rad. Pnt.
R6	1131809.14	2940914.85	8' Rad. Pnt.

1 MVC SITE PLAN
C-102



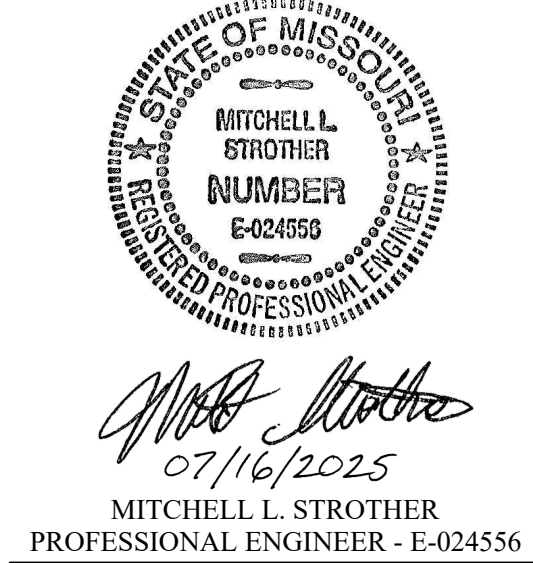
- GENERAL NOTES:**
- EXISTING UTILITIES DEPICTED ON THESE PLANS ARE BASED ON AVAILABLE SURVEYS AND RECORDS; THEREFORE, LOCATIONS MUST BE CONSIDERED APPROXIMATE ONLY. THERE MAY BE ADDITIONAL UTILITIES, THE EXISTENCE OF WHICH, AT PRESENT, IS NOT KNOWN. VERIFICATION OF THE LOCATIONS OF UNDERGROUND UTILITIES, SHOWN OR NOT SHOWN, UTILITY LOCATES WILL BE REQUIRED PRIOR TO CONSTRUCTION. CONTACT THE MISSOURI ONE CALL SYSTEM AT 1-800-DIG-RITE (1-800-344-7483) PRIOR TO EXCAVATION OR DEMOLITION.
 - CONTRACTOR SHALL REMOVE ALL EXCESS EXCAVATED MATERIAL AND LEGALLY DISPOSE OF OFF-SITE.
 - HORIZONTAL & VERTICAL CONTROL WERE DERIVED FROM THE MISSOURI DEPARTMENT OF TRANSPORTATION'S REAL-TIME NETWORK. THE HORIZONTAL CONTROL IS UTILIZING THE MISSOURI STATE PLANE COORDINATE SYSTEM, WEST ZONE, CONVERTED TO U.S. SURVEY FEET AND THE VERTICAL CONTROL IS BASED FROM NAVD88 DATUM.
 - SILT FENCE LOCATIONS ARE ALL 10LF UNLESS NOTED OTHERWISE (158LF OF SILT FENCE ESTIMATED FOR THIS PROJECT).

CONCRETE & DRAINAGE POINTS				
Point	Northing	Easting	Elev.	Desc.
01	1131905.78	2940669.63	812.47	DS
02	1131841.80	2940828.43	810.42	DS
03	1131826.46	2940875.22	809.79	FL IN
04	1131810.29	2940912.36	809.38	FL OUT
05	1131746.81	2941060.86	811.50	DS
06	1131758.38	2941078.42	811.22	DS
07	1132033.33	2941084.03	799.72	DS
08	1132095.09	2941085.46	798.29	DS
09	1131901.19	2940852.79	807.45	DS
10	1132115.46	2940720.29	808.68	EC
11	1132116.11	2940764.29	807.62	EC
12	1132053.91	2940765.22	807.96	EC
13	1132044.06	2940775.36	807.72	EC
14	1132044.52	2940805.90	807.26	EC
15	1132038.33	2940831.46	806.86	EC
16	1132038.60	2940849.45	805.58	EC
17	1131933.61	2940851.02	807.63	EC
18	1131897.62	2940851.56	807.82	EC
19	1131881.41	2940851.80	807.93	EC
20	1131881.28	2940842.99	808.05	EC
21	1131871.67	2940841.12	809.23	EC
22	1131853.91	2940883.28	808.88	EC
23	1131835.16	2940876.26	811.56	TC
24	1131876.16	2940778.97	811.56	TC
25	1131894.54	2940744.70	812.39	TC
26	1131895.48	2940723.57	813.00	TC
27	1131881.11	2940831.80	808.13	CE
28	1131933.31	2940831.02	807.83	CE
29	1131820.03	2940869.92	811.46	EA
30	1131803.44	2940908.03	811.47	EA
31	1131817.14	2940914.95	810.47	EC
32	1131814.31	2941039.17	809.91	EC
33	1131833.85	2941059.57	809.61	EC
34	1131919.58	2941061.53	807.04	EC
35	1131920.95	2941001.53	807.04	EC
36	1131919.23	2940928.50	807.16	EC
37	1131895.32	2940928.12	807.08	EC
38	1131873.93	2940891.52	806.92	EC
39	1131873.32	2940927.74	806.80	DS
40	1131872.63	2940969.05	806.44	DS
41	1131910.58	2941018.41	805.86	DS
42	1132024.21	2940785.66	808.43	CE
43	1131959.22	2940786.63	809.60	CE
44	1131894.23	2940787.60	810.54	CE
45	1131858.10	2940890.20	808.61	CE
46	1131895.73	2940739.82	812.42	TC

DS = Centerline Drainage Swale
EC = Edge of Concrete
TC = Top of Curb - Subtract 0.5' for EC
CE = Concrete Elevation
EA = Edge of Existing Asphalt

PROJECT CONTROL				
Control Point	Northing	Easting	Elevation	Description
MONG Control #3	1131767.16	2941037.53	811.32	5/8" Rebar w/ "MONG CONTROL MARK" Cap
MONG Control #4	1131878.14	2940749.57	812.16	Spike/Shiner
MONG Control #6	1131939.80	2940663.41	815.58	Spike/Shiner

STATE OF MISSOURI
MIKE KEHOE,
GOVERNOR



DEPARTMENT OF THE
MISSOURI NATIONAL GUARD

OFFICE OF THE
ADJUTANT GENERAL

FACILITIES MANAGEMENT
OFFICE

CONCRETE PARKING
IMPROVEMENTS

RICHMOND
READINESS CENTER
860 E. LEXINGTON ST.
RICHMOND, MO 64085

PROJECT # T252201
SITE # 6266
ASSET # 8136266001

REVISION: _____
DATE: _____
REVISION: _____
DATE: _____
REVISION: _____
DATE: _____
ISSUE DATE: 07/16/2025

CAD DWG FILE: RICHMOND-POV
DRAWN BY: RLH
CHECKED BY: MLS
DESIGNED BY: RLH/MLS

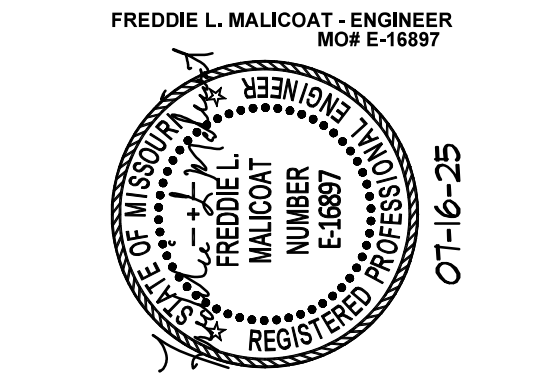
SHEET TITLE:

POV PARKING
IMPROVEMENTS
GRADING PLAN

SHEET NUMBER:

C-103

SHEET: 4 OF 6
DATE: 07/16/2025



FREDDIE L. MALICOAT
PROFESSIONAL ENGINEER - E-16897



DEPARTMENT OF THE
MISSOURI NATIONAL GUARD

OFFICE OF THE
ADJUTANT GENERAL

FACILITIES MANAGEMENT
OFFICE

POV PARKING IMPROVEMENTS

**RICHMOND
READINESS CENTER
860 E. LEXINGTON ST.
RICHMOND, MO 64085**

PROJECT # T252201
SITE # 6266
ASSET # 8136266001

REVISION: _____
DATE: _____
REVISION: _____
DATE: _____
REVISION: _____
DATE: _____
ISSUE DATE: 07/16/2025

CAD DWG FILE: 25139
DRAWN BY: FM
CHECKED BY: FM
DESIGNED BY: FM

SHEET TITLE:
**LIGHTING PLAN
& DETAILS**

SHEET NUMBER:

E-101

SHEET: 5 OF 6
DATE: 07/16/2025

LIGHTING FIXTURE SCHEDULE (BASIS OF DESIGN)

MARK	MANUFACTURER AND MODEL NUMBER	TYPE	LAMPS	MOUNTING	REMARKS
Z	LSI MRL-LED-50L-SIL-SW-UNV-DIM-40-70CRI-BRZ	LED	# SIZE	20' POLE	1,2,3,4

- OR APPROVED EQUAL BY COOPER, WILLIAMS, OR GE.
- CONTROLLED VIA INTERMATIC ST01 SERIES TIMBER AND K4221C PHOTOCONTROL.
- SEE SHEET E-101 FOR LOCATION/ORIENTATION AND NUMBER OF HEADS PER POLE.
- INSTALLED ON LSI-45Q-B3-S11G-20-4-BRZ (# - SEE SHEET E-101 FOR NUMBER OF HEADS PER POLE.

SITE LIGHTING SCHEDULE (BASIS OF DESIGN)

FIXTURES						
MARK	MANUFACTURER AND MODEL NUMBER	TYPE	LAMPS	LENS HT	REMARKS	LLF/LUM
			# SIZE			
Z	LSI MRL-LED-50L-SIL-SW-UNV-DIM-40-70CRI-BRZ	LED	1 353	20' POLE	2,3,4	0.95/ABS

CALCULATIONS						
CALCULATION ZONE	AVG	MAX	MIN	MX/MN (1)	AV/MN (1)	AREA/LEN
LOT	3.6	40.7	0.0	N/A	-	-

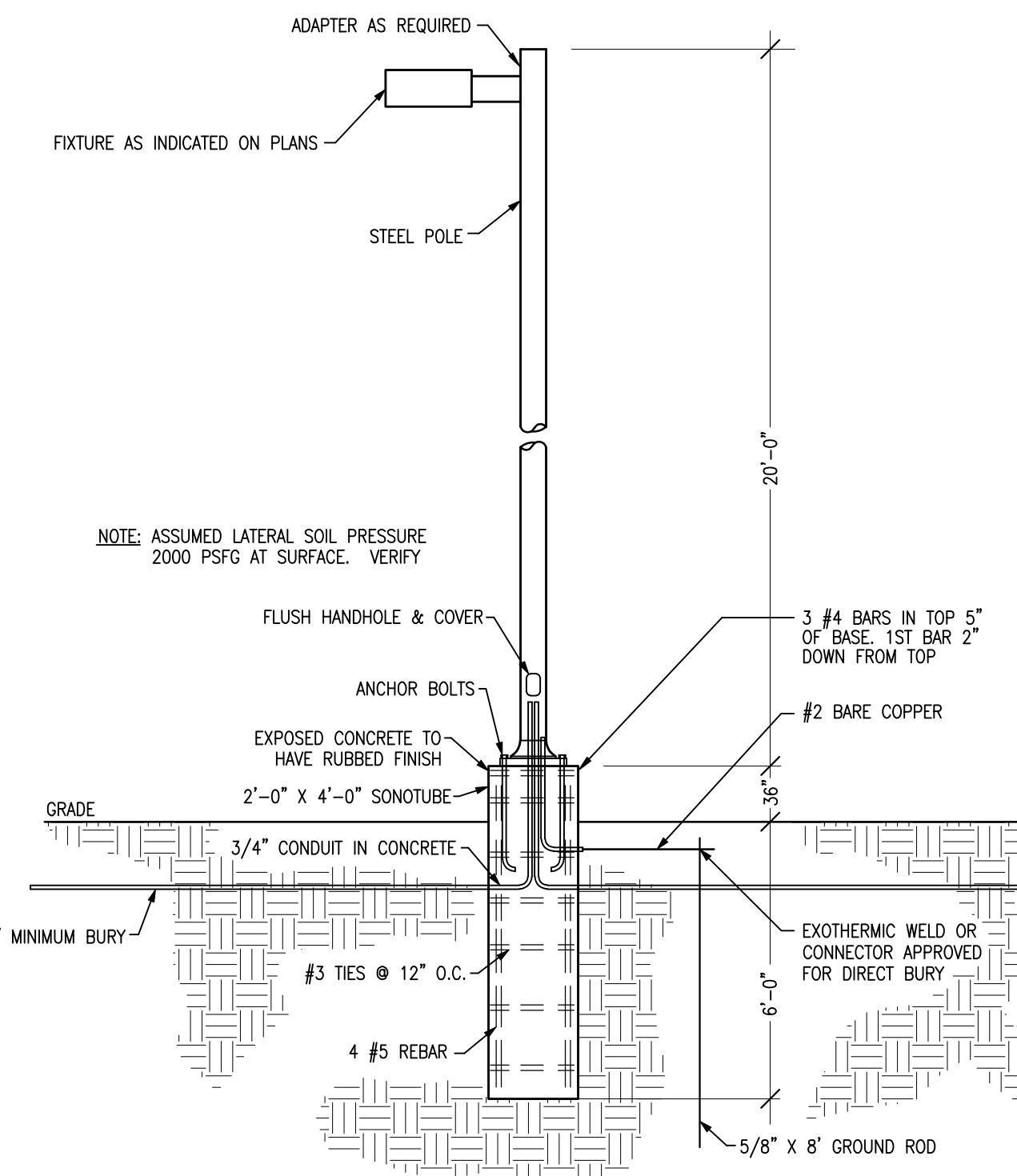
- MAX/MIN RATIO USING THE MIDDLE 95% OF DATA POINTS
- FULL CUTOFF FIXTURE
- 1' DEEP FIXTURE ON 22' POLE ON 3' BASE
OPTIONAL CHANGE T1122014 LIGHTING FOUNDATION
INSTALLED ON LSI-55Q-B3-A188-25-1-BRZ
- OR APPROVED EQUAL BY COOPER, WILLIAMS, OR GE.

GENERAL NOTES:

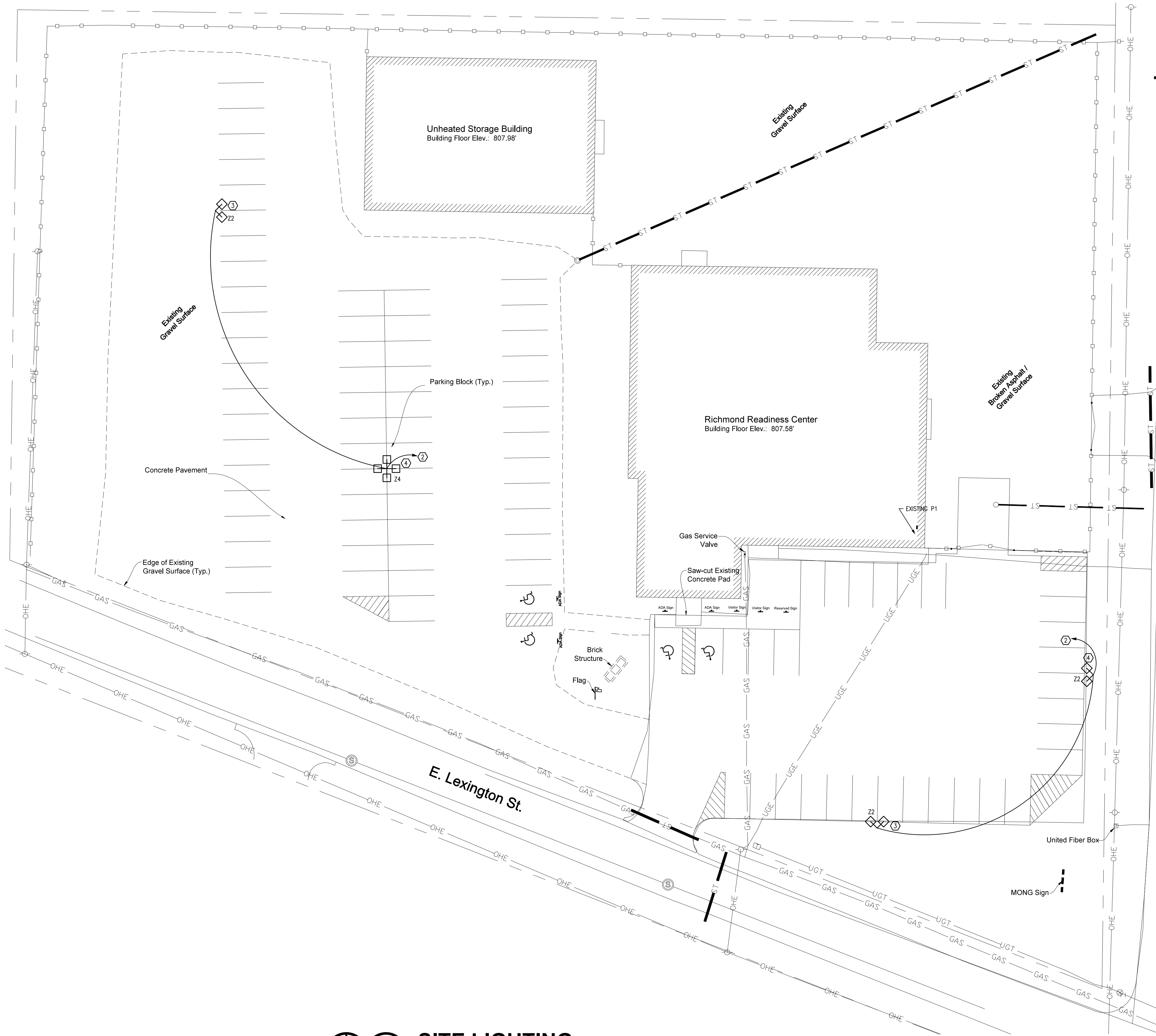
- VERIFY PLUMBING, HVAC, POWER, AND LIGHTING REQUIREMENTS FOR OWNER'S SPECIFIC EQUIPMENT PRIOR TO ROUGH-IN.
- COORDINATE INSTALLATION OF EQUIPMENT WITH MANUFACTURERS' INSTALLATION INSTRUCTIONS PRIOR TO ROUGH-IN.
- CONTRACTOR SHALL MAINTAIN FIRE RATING OF ANY PENETRATION AND SHALL SEAL ANY PENETRATION IN A FLOOR, CEILING, OR EXTERIOR WALL.

KEYED NOTES:

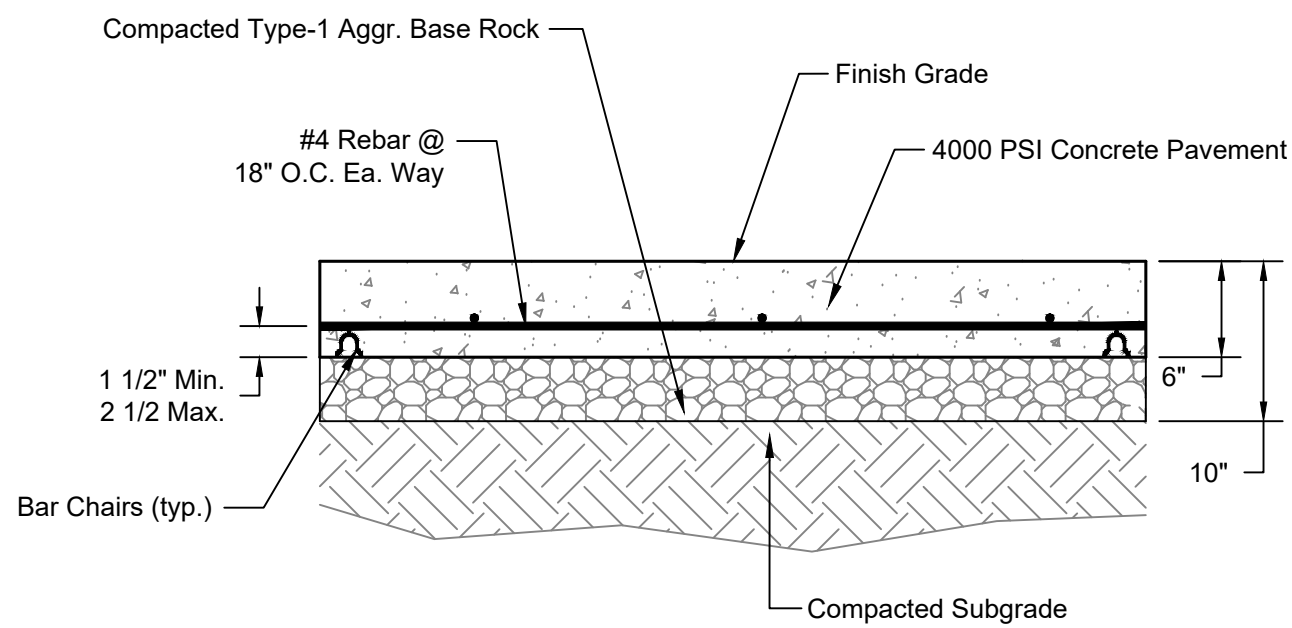
- CONTROLLED VIA INTERMATIC ST01 SERIES TIMER AND K4221C PHOTOCONTROL.
- CONNECT TO NEW 20A-2P BREAKER (CIRCUITS 39,41) IN EXISTING ELECTRICAL PANEL (P1). VERIFY LOCATION, SPACE, AND CAPACITY.
- WIRE SIZE: 2-#10, 1-#12 GROUND.
- WIRE SIZE: 2-#8, 1-#12 GROUND.



2 LIGHT POLE BASE DETAIL E1 NO SCALE

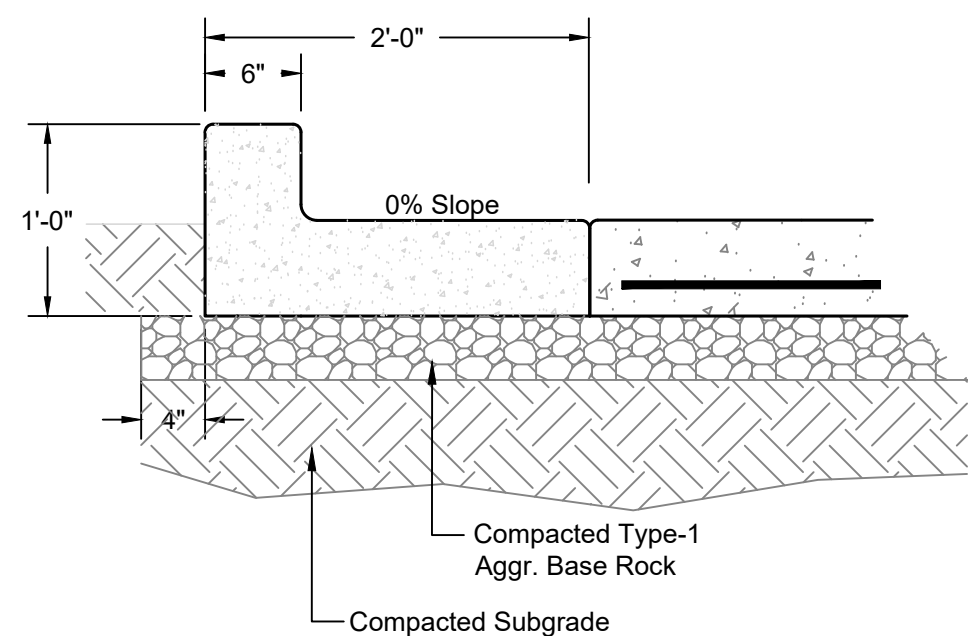


1 SITE LIGHTING
E1 SCALE: 1" = 20'-0"

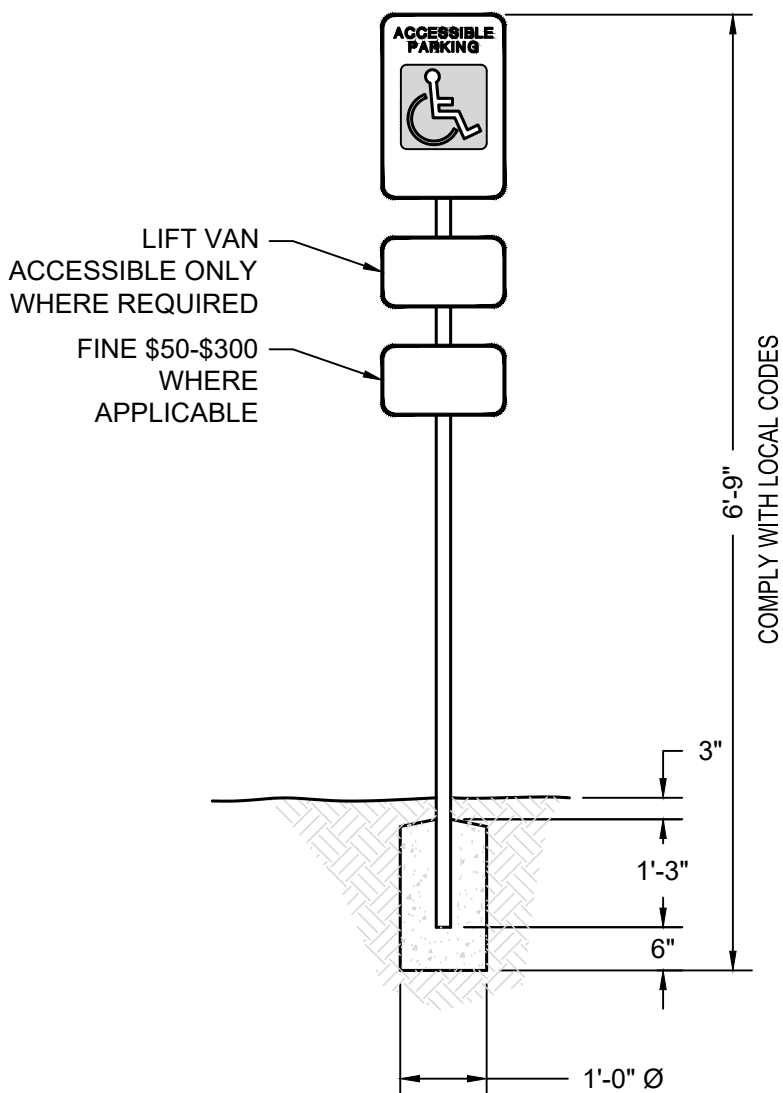


- NOTES:
1. 1/2" W X 2" D SAWED JOINTS AT 12' CENTERS (MAXIMUM) REQUIRED FOR ALL CONCRETE PAVEMENT.
 2. REINFORCING STEEL SHALL BE SUPPORTED WITH BAR CHAIRS W/ CONTINUOUS RUNNERS SPACED AT 4 FEET C/C MAXIMUM.
 3. CURING MATERIALS SHALL BE USED FOR ALL CONCRETE FLATWORK IN ACCORDANCE WITH SECTION 321313 PART 2.5 OF THE SPECIFICATIONS.

1 TYP. CONCRETE PAVEMENT
C-501 SCALE: 1" = 1'



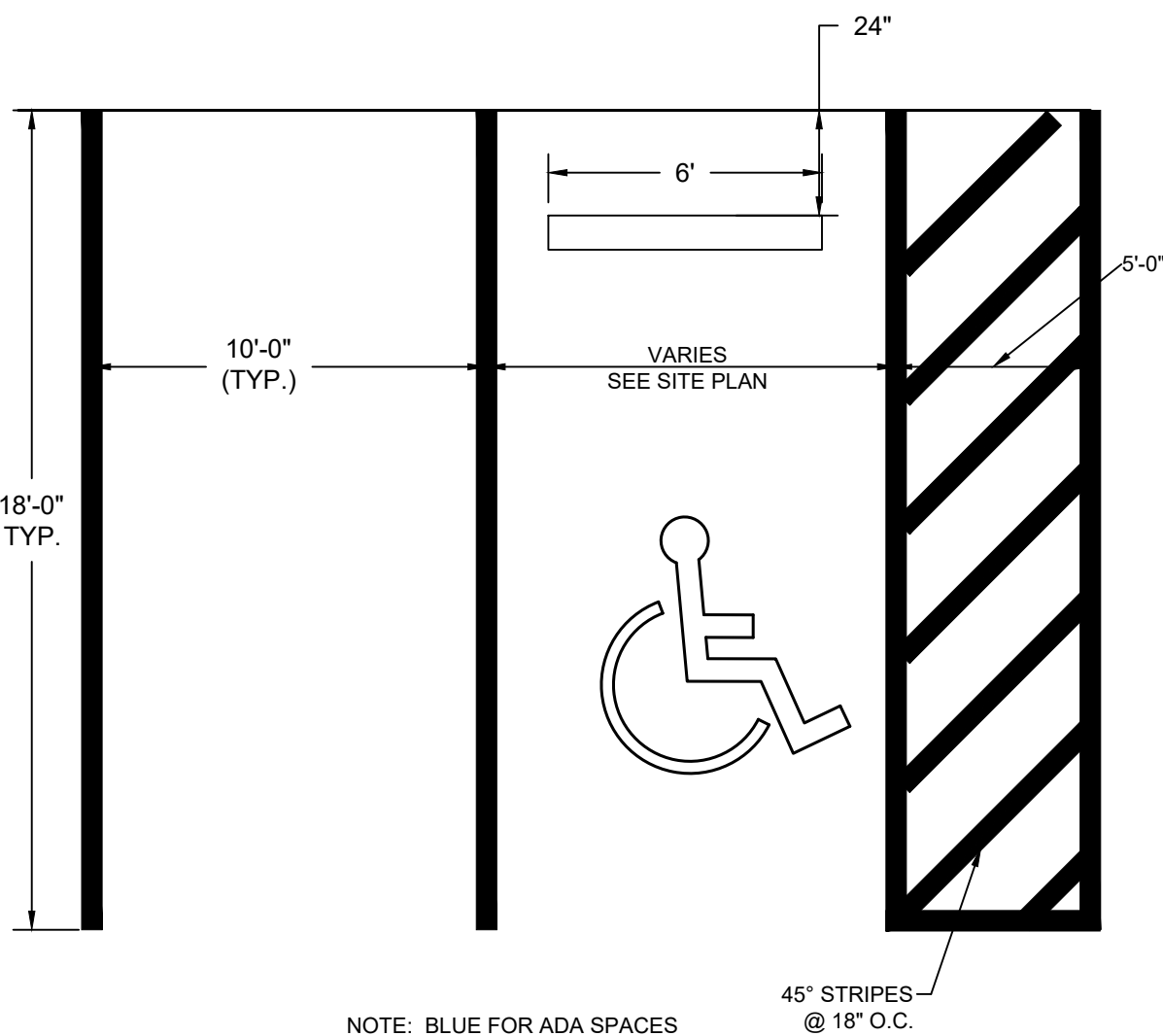
2 TYPICAL CURB DETAIL
C-501 SCALE: 1" = 1'



5 ACCESSIBILITY SIGN DETAIL
C-501 NOT TO SCALE

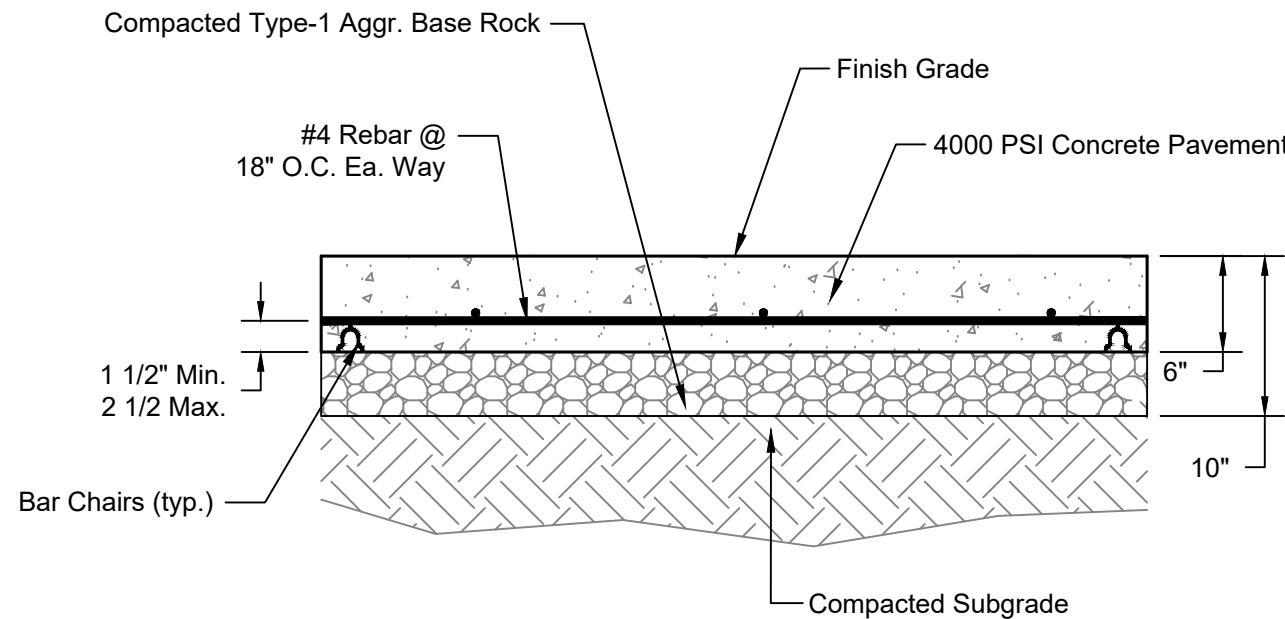


1. VERIFY WITH LOCAL CONDITIONS.



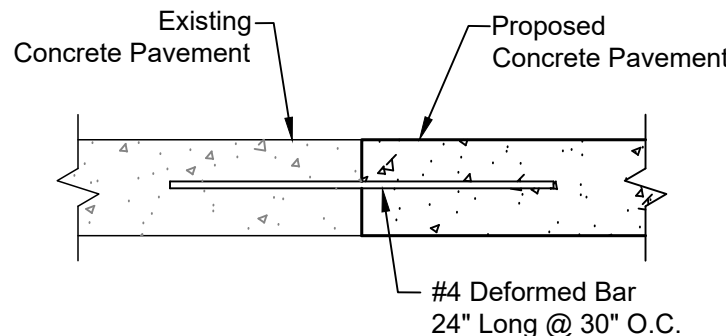
NOTE: BLUE FOR ADA SPACES
WHITE FOR OTHERS

6 ADA STRIPING DETAIL
C-501 NOT TO SCALE

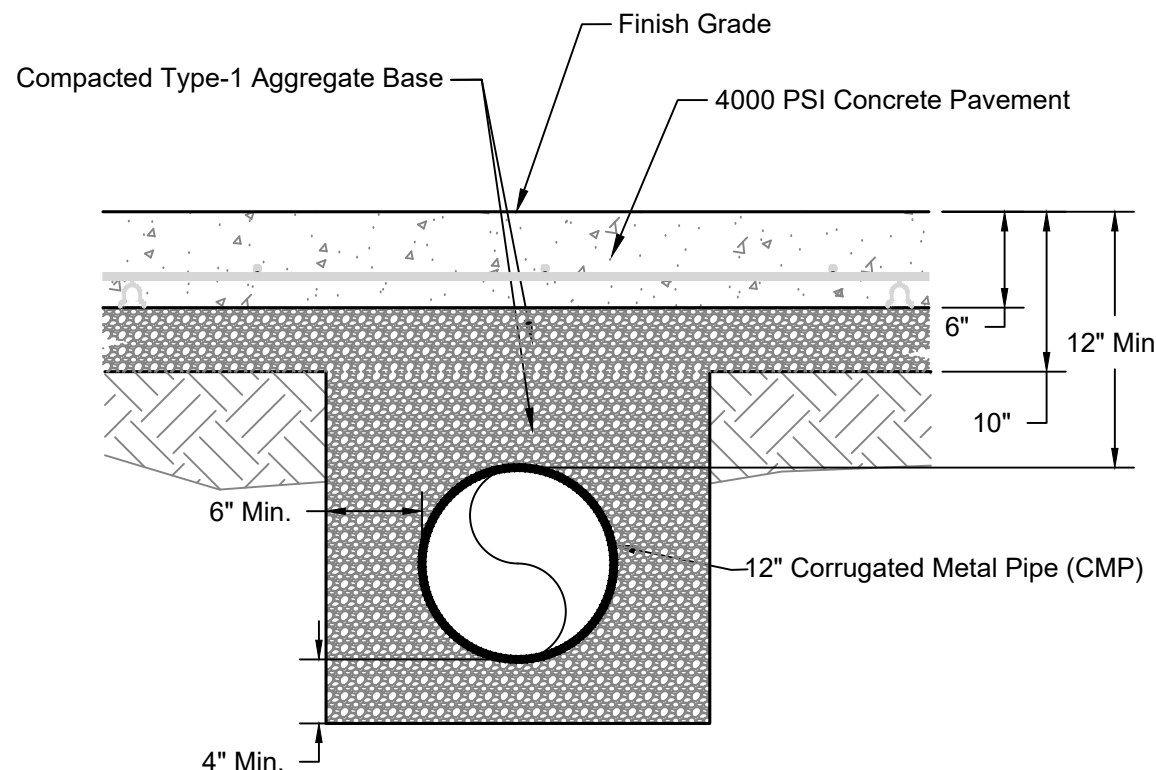


- NOTES:
1. 1/2" W X 2" D SAWED JOINTS AT 6' CENTERS (MAXIMUM) REQUIRED FOR ALL CONCRETE SIDEWALK.
 2. REINFORCING STEEL SHALL BE SUPPORTED WITH BAR CHAIRS W/ CONTINUOUS RUNNERS SPACED AT 4 FEET C/C MAXIMUM.
 3. CURING MATERIALS SHALL BE USED FOR ALL CONCRETE FLATWORK IN ACCORDANCE WITH SECTION 321313 PART 2.5 OF THE SPECIFICATIONS.

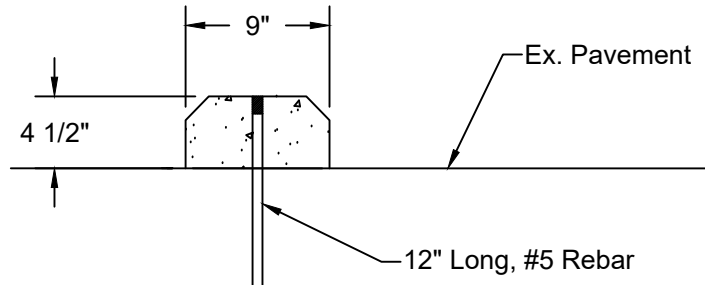
3 TYP. CONCRETE SIDEWALK
C-501 SCALE: 1" = 1'



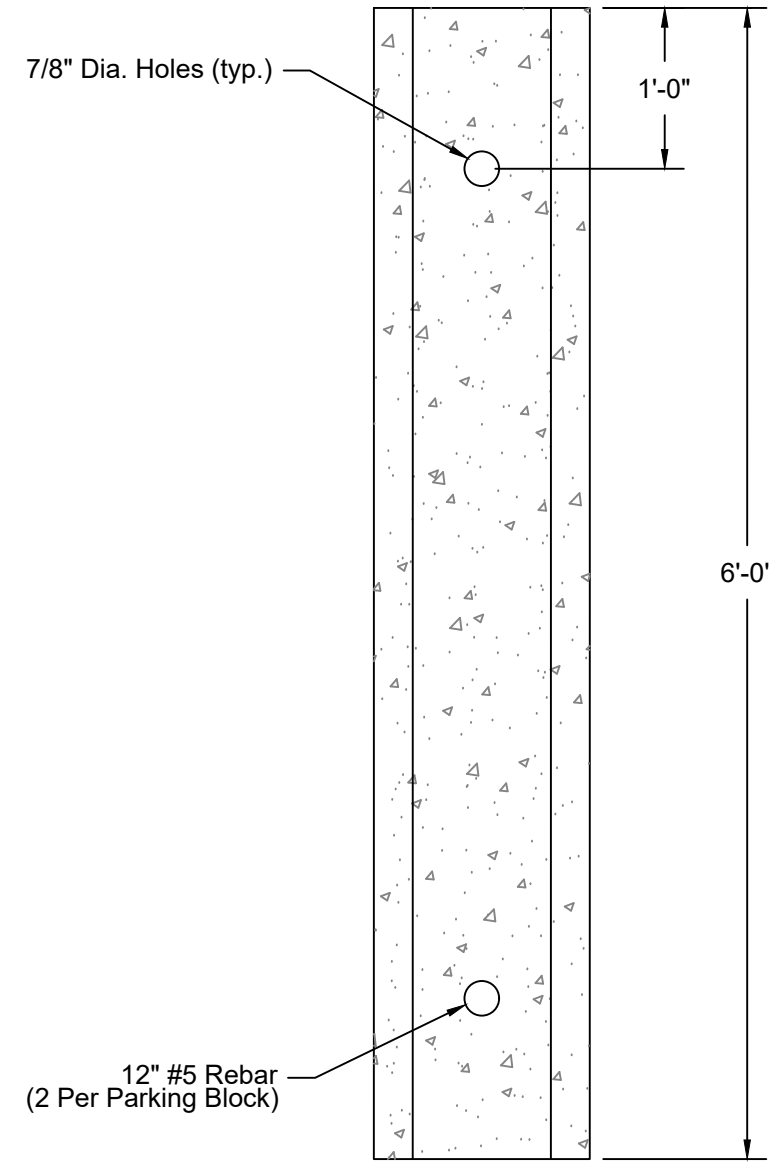
7 TYP. CONSTRUCTION JOINT
C-501 SCALE: 1" = 1'



8 PIPE INSTALLATION DETAIL
C-501 SCALE: 1" = 1'



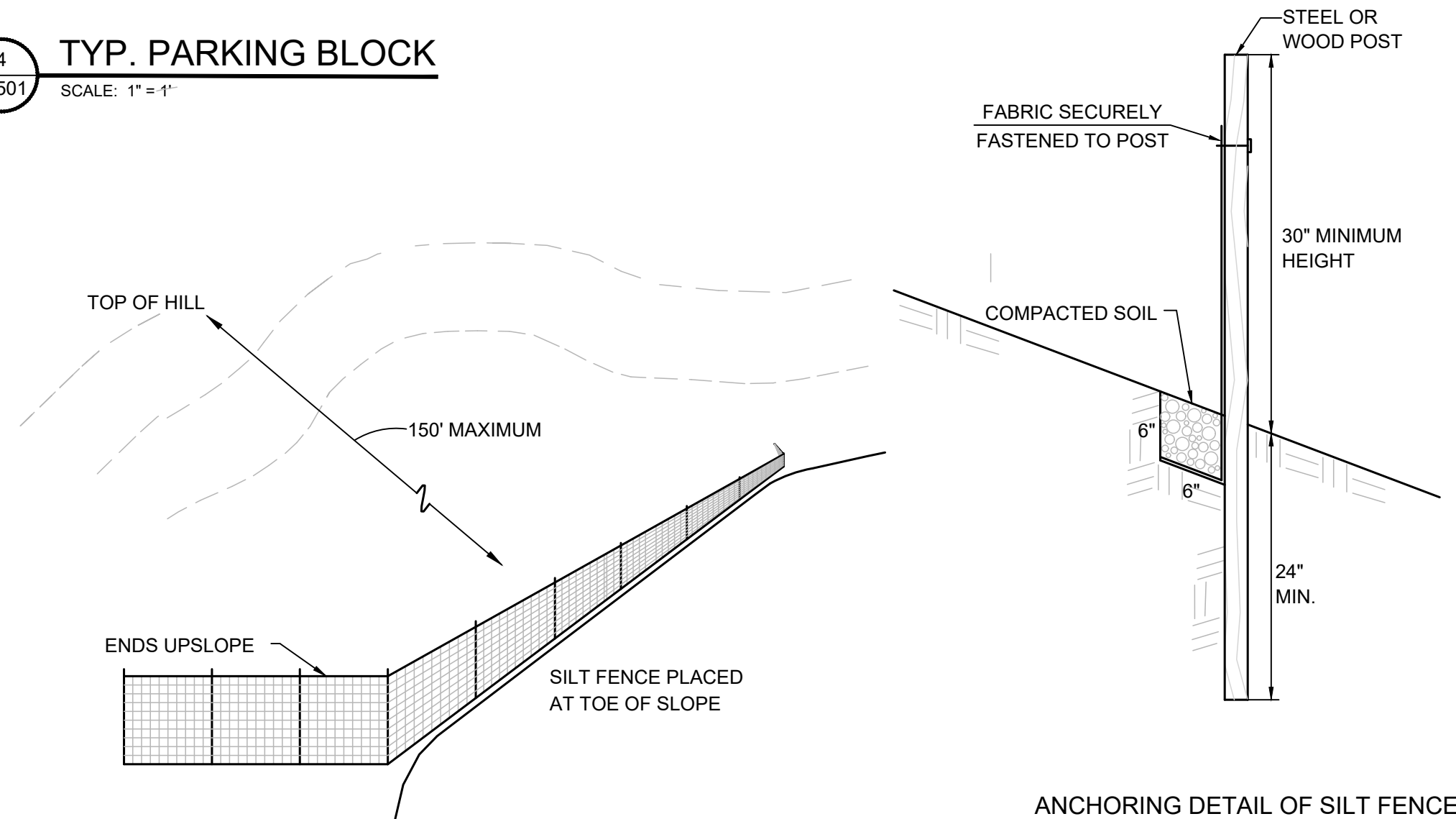
SECTION



TOP VIEW

- NOTES:
1. PRECAST CONCRETE PARKING BLOCKS SHALL BE STEEL-REINFORCED, AIR-ENTRAINED CONCRETE WITH A 4000 PSI MINIMUM COMPRESSION STRENGTH. TOP OF THE PARKING BLOCK WILL HAVE TWO CHAMFERED CORNERS, AND TWO FACTORY-FORMED OR DRILLED VERTICAL HOLES AS DEPICTED ON DETAIL.
 2. PARKING BLOCKS SHALL BE INSTALLED 24" FROM THE EDGE OF THE PROPOSED CONCRETE PAVING.

4 TYP. PARKING BLOCK
C-501 SCALE: 1" = 1'



CONSTRUCTION SPECIFICATIONS:

1. FABRIC FENCES MAY BE CONSTRUCTED WITH SUPPORTING FENCES, SUCH AS SNOW FENCES OR WIRE MESH FENCES. THE SUPPORTING FENCES SHALL BE STRONG ENOUGH TO WITHSTAND THE LOAD FROM POND WATER AND TRAPPED SEDIMENT. THE SUPPORT POSTS SHALL BE SPACED AT 10 FEET OR LESS, AND SHALL BE PLACED OR DRIVEN AT LEAST 2 FEET INTO THE GROUND. POSTS SHALL BE 4-INCH DIAMETER WOOD POSTS OR STEEL POSTS.

WHEN A FABRIC FENCE IS INSTALLED WITHOUT A SUPPORTING FENCE, THE POSTS SHALL BE SPACED AT 4 FEET OR LESS. POSTS SHALL BE SPACED OR DRIVEN AT LEAST 2 FEET INTO THE GROUND. POSTS SHALL BE 2-INCH SQUARE OR HEAVIER WOOD POSTS OR STANDARD STEEL POSTS.

2. A TRENCH FOR ANCHORING THE FABRIC SHALL BE DUG ALONG THE UPSLOPE SIDE OF THE POSTS. THE TRENCH SHALL BE AT LEAST 6 INCHES WIDE AND 6 INCHES DEEP. THE FABRIC SHALL BE LAID IN THE TRENCH, WHICH THEN SHALL BE BACKFILLED AND COMPACTED TO PREVENT WATER AND SEDIMENT FROM PASSING UNDERNEATH THE FABRIC FENCE.

3. THE FILTER FABRIC SHALL BE FURNISHED IN A CONTINUOUS ROLL CUT TO THE LENGTH OF THE SILT FENCE TO AVOID SPLICES. WHEN SPLICES ARE NECESSARY, THE FABRIC SHALL BE SPLICED AT A SUPPORT POST WITH A MINIMUM 6-INCH OVERLAP, FOLDED OVER, AND SECURELY FASTENED.

4. THE SYNTHETIC FILTER FABRIC SHALL BE A PERVIOUS SHEET OF POLYPROPYLENE, NYLON, POLYESTER OR ETHYLENE YARN UNIFORM IN TEXTURE AND APPEARANCE AND FREE FROM DEFECTS, FLAWS, OR TEARS THAT WOULD AFFECT ITS PHYSICAL PROPERTIES. WHEN INSTALLING FABRIC FOR SILT FENCES, FOLLOW MANUFACTURER'S RECOMMENDATIONS.

9 SYNTHETIC FILTER FABRIC EROSION CONTROL DETAIL
C-501 SCALE: 1" = 1'

STATE OF MISSOURI
MIKE KEHOE,
GOVERNOR



Mitchell L. Strother
07/16/2025
MITCHELL L. STROTHER
PROFESSIONAL ENGINEER - E-024556



DEPARTMENT OF THE
MISSOURI NATIONAL GUARD

OFFICE OF THE
ADJUTANT GENERAL

FACILITIES MANAGEMENT
OFFICE

POV PARKING
IMPROVEMENTS

RICHMOND
READINESS CENTER
860 E. LEXINGTON ST.
RICHMOND, MO 64085

PROJECT # T24MP21
SITE # 6300
ASSET # 813630013

REVISION: _____
DATE: _____
REVISION: _____
DATE: _____
REVISION: _____
DATE: _____
ISSUE DATE: 07/16/2025

CAD DWG FILE: C-501MISCDET
DRAWN BY: RLH
CHECKED BY: MLS
DESIGNED BY: RLH/MLS

SHEET TITLE:

DETAIL SHEET

SHEET NUMBER:

C-501

SHEET: 6 OF 6
DATE: 07/16/2025