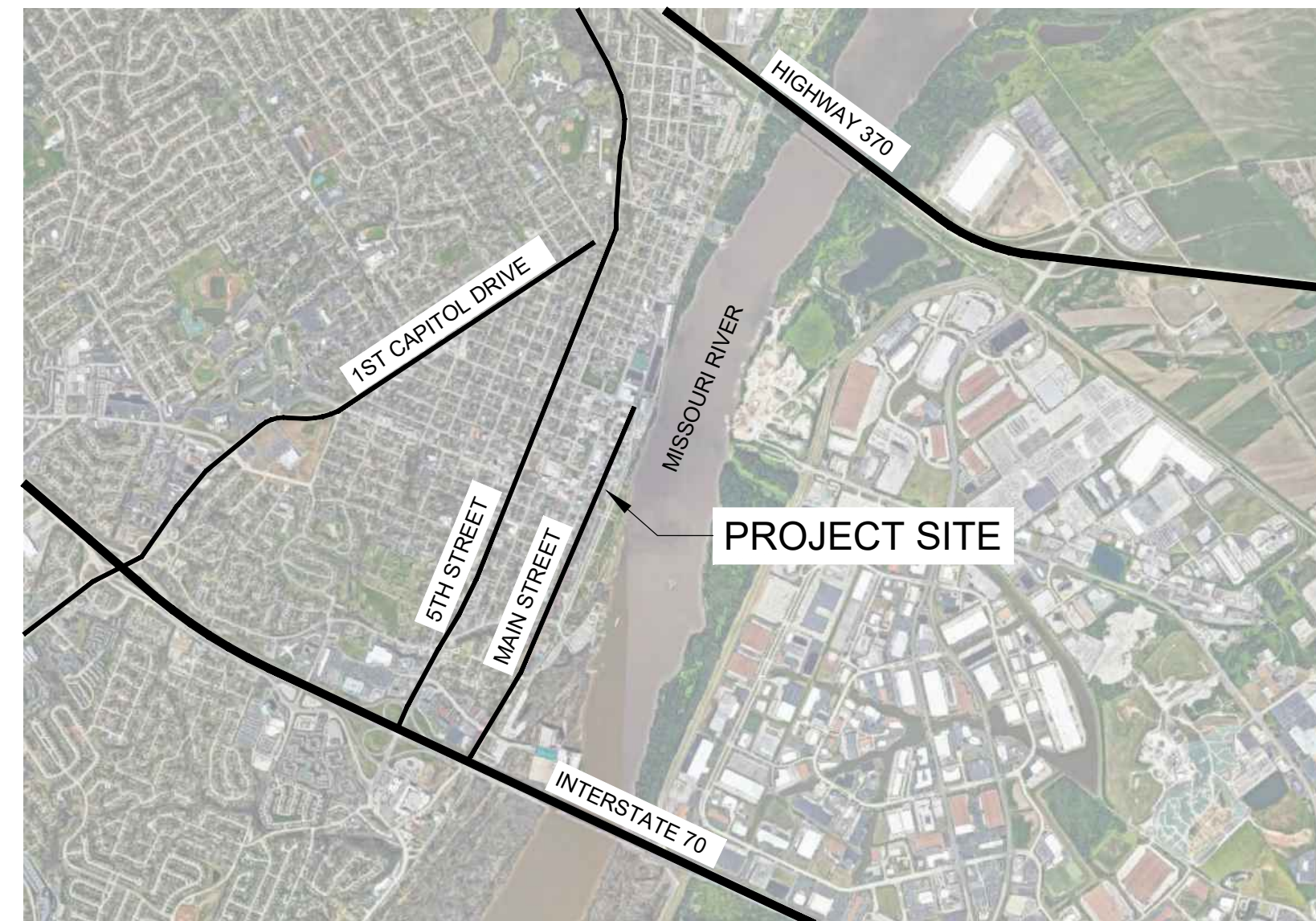


First Missouri State Capitol State Historic Site

SIDEWALK AND DRAINAGE IMPROVEMENTS

St. Charles, Missouri

200 SOUTH MAIN STREET,
ST. CHARLES MISSOURI, 63301



Landscape Architect:
SWT DESIGN, Inc.
7722 Big Bend Blvd., St. Louis, MO 63119
314-644-5700
MO Corp. Cert. of Authority #2006002904

Civil Engineer:
SWT DESIGN, Inc.
7722 Big Bend Blvd., St. Louis, MO 63119
314-644-5700
MO Corp. Cert. of Authority #2019038750

OWNER STATE OF MISSOURI
MICHAEL L. PARSON,
GOVERNOR

DEPARTMENT OF NATURAL RESOURCES
DIVISION OF MISSOURI STATE PARKS

PROJECT MANAGEMENT: OFFICE OF ADMINISTRATION
DIVISION OF FACILITIES MANAGEMENT,
DESIGN AND CONSTRUCTION

ASSET NUMBER: 7815209002-FIRST MISSOURI STATE CAPITOL BUILDING

INDEX OF SHEETS

G-000	COVER SHEET
G-001	EXISTING SITE SURVEY
L-001	NOTES AND LEGENDS
L-100	TEMPORARY TRAFFIC CONTROL PLAN
L-110	DEMOLITION PLAN - BASE BID
L-111	MATERIALS PLAN - BASE BID
L-112	GRADING AND DRAINAGE PLAN - BASE BID
L-113	LIGHTING PLAN - BASE BID
L-120	DEMOLITION PLAN - ALTERNATE #1
L-121	MATERIALS PLAN - ALTERNATE #1
L-122	GRADING AND DRAINAGE PLAN - ALTERNATE #1
L-123	TREE PLANTING PLAN - ALTERNATE #1
L-510	DETAILS

PROJECT NO. X2101-01

REBID DRAWINGS