

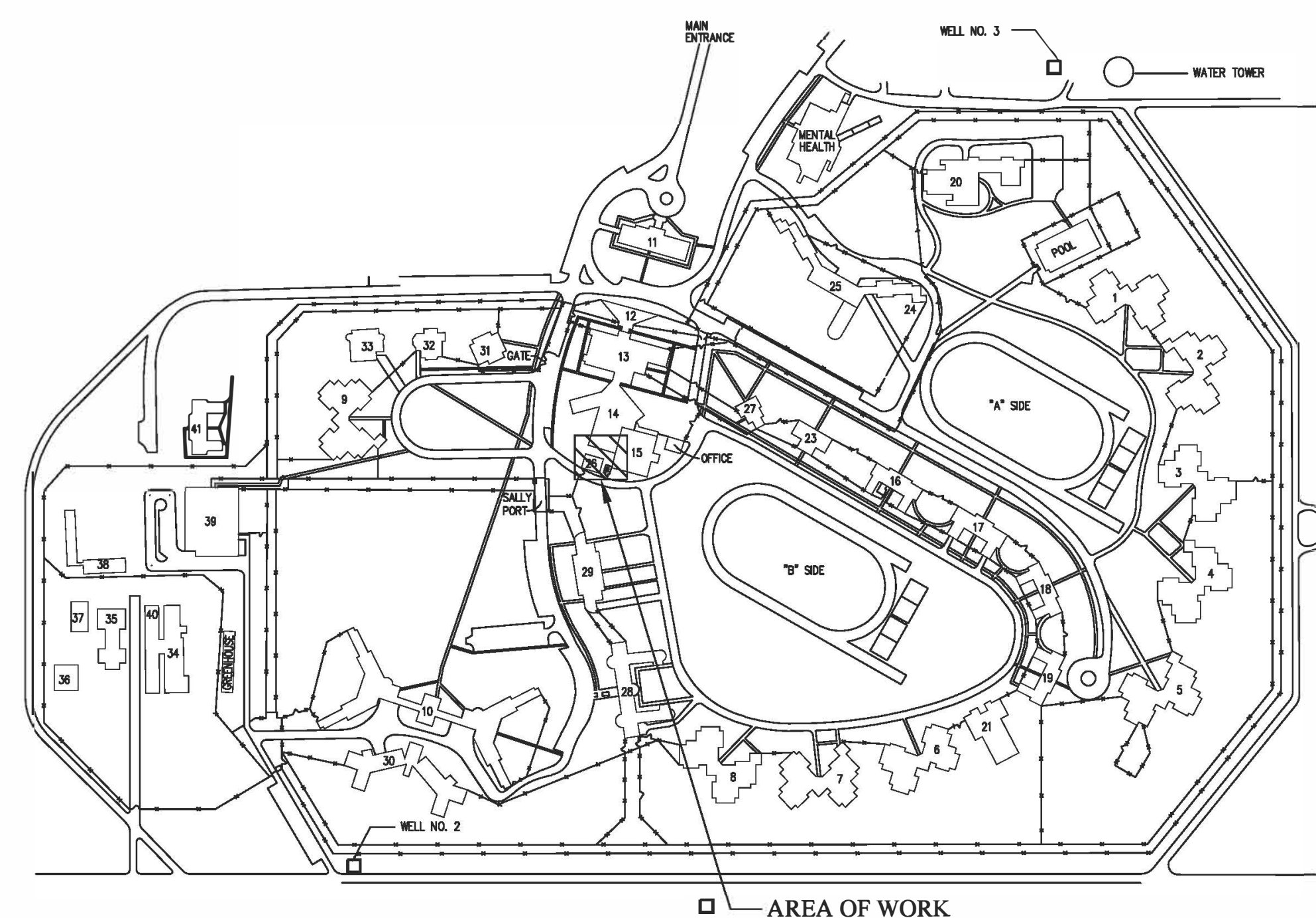
# FARMINGTON CORRECTION CENTER

1012 W COLUMBIA STREET

FARMINGTON, MO 63640

## FARMINGTON CORRECTIONAL CENTER - SERVICE ADD ELECTRICAL CIRCUITS TO EMERGENCY GENERATOR FOOD SERVICES WAREHOUSE

### SITE LOCATION MAP



#### McCLURE ENGINEERING

1000 Clark Avenue Saint Louis, Missouri 63102  
T 314-645-6232 F 314-645-4128 www.McClureeng.com  
Missouri State Certificate of Authority #000087

#### GENERAL:

#### ELECTRICAL:

CS-1

E0.0

E0.1

E1.0

COVER SHEET

ELECTRICAL SYMBOLS AND ABBREVIATIONS

ONE-LINE - ELECTRICAL

SITE PLAN - ELECTRICAL

### SHEET INDEX:

OWNER:

STATE OF MISSOURI  
MIKE KEHOE, GOVERNOR

DEPARTMENT OF CORRECTIONS

PROJECT  
MANAGEMENT:

OFFICE OF ADMINISTRATION  
DIVISION OF FACILITIES MANAGEMENT,  
DESIGN AND CONSTRUCTION

DESIGNER:

PROJECT NUMBER:

SITE NUMBER:

FACILITY NUMBER:

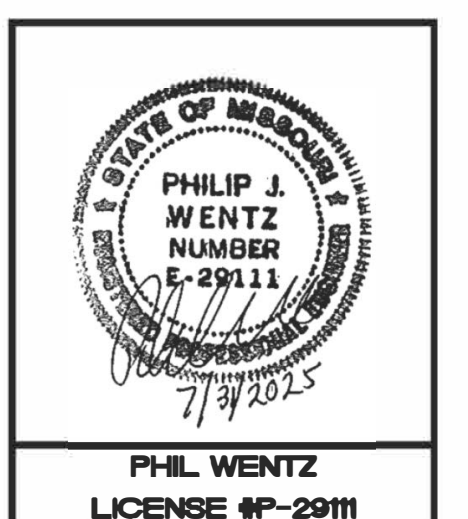
MCCLURE ENGINEERING

C2238-01

7008

9327008085

BID SET: JULY 31, 2025



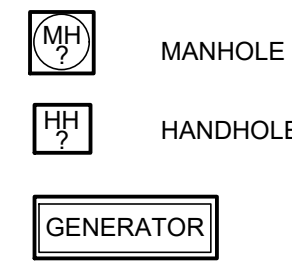
SHEET NUMBER:

**CS-1**

1 OF 4 SHEETS  
07-31-2025

ELECTRICAL SYMBOLS

SITE EQUIPMENT



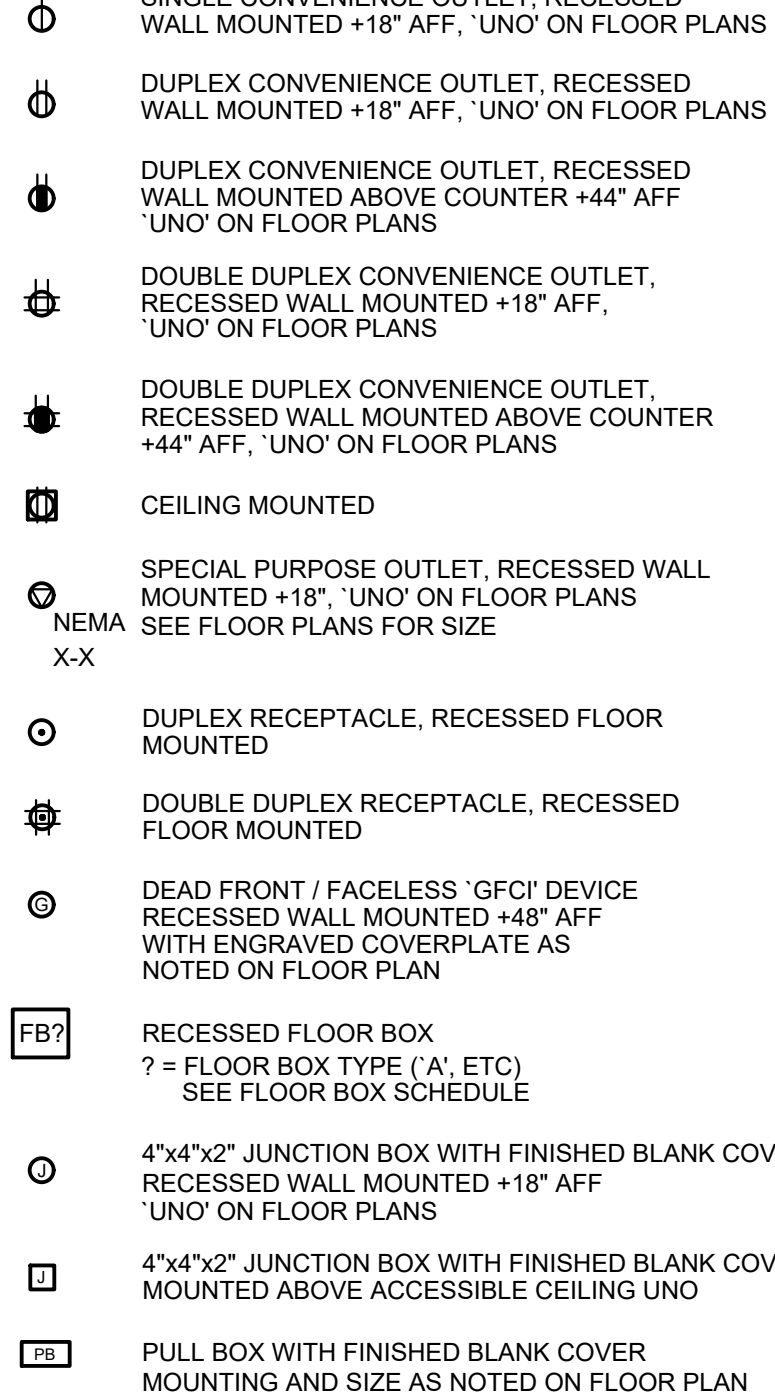
ABBREVIATIONS

AFF ABOVE FINISHED FLOOR  
AFG ABOVE FINISHED GRADE  
AL ALUMINUM  
ARC ALUMINUM RIGID CONDUIT  
AUX AUXILIARY  
BOF BOTTOM OF FIXTURE  
CB CIRCUIT BREAKER  
CKT CIRCUIT  
COF CENTER OF FIXTURE  
EC ELECTRICAL CONTRACTOR  
EMT ELECTRICAL METALLIC TUBING  
EWC ELECTRIC WATER COOLER  
GRC GALVANIZED RIGID CONDUIT  
G GROUND FAULT CIRCUIT INTERRUPTER  
GRD GROUND  
IMC INTERMEDIATE METAL CONDUIT  
MCB MAIN CIRCUIT BREAKER  
MLO MAIN LUG ONLY  
NC NORMALLY CLOSED  
NF NON FUSED  
NL UNSWITCHED NIGHT LIGHT  
NO NORMALLY OPEN  
NTS NOT TO SCALE  
PVC PVC CONDUIT  
TOP TOP OF FIXTURE  
U USB PORT  
UCR UNDER CABINET REFRIGERATOR  
UNO UNLESS NOTED OTHERWISE  
WP WEATHERPROOF COVER  
WPI WEATHERPROOF IN-USE COVER

MOUNTING HEIGHTS

ALL MOUNTING HEIGHTS ARE AS GIVEN UNLESS OTHERWISE NOTED ON PLANS  
ALL MOUNTING HEIGHTS ARE TO CENTER OF DEVICE/LIGHT FIXTURE, UNLESS OTHERWISE NOTED

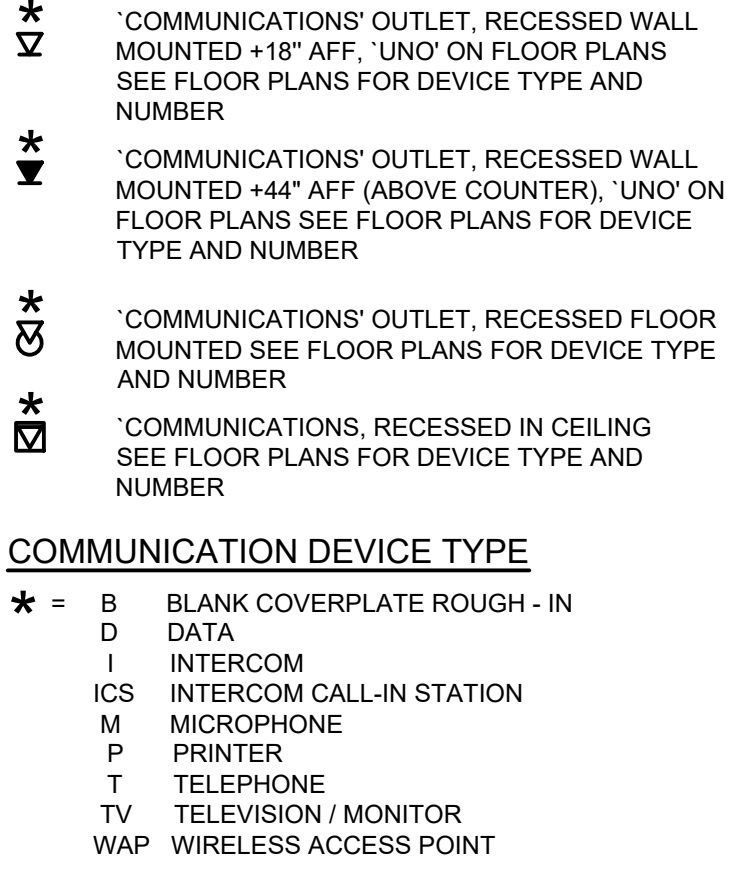
RECEPTACLES



RECEPTACLE SUBSCRIPT

HG HOSPITAL GRADE  
TR TAMPER RESISTANCE  
IG ISOLATED GROUND  
G GROUND FAULT CIRCUIT INTERRUPTER  
WR WEATHER RESISTANCE  
WP WEATHERPROOF COVER  
WPI WEATHERPROOF IN-USE COVER  
U USB PORT

COMMUNICATION DEVICES

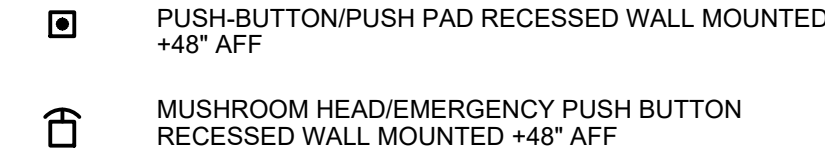


COMMUNICATION DEVICE TYPE

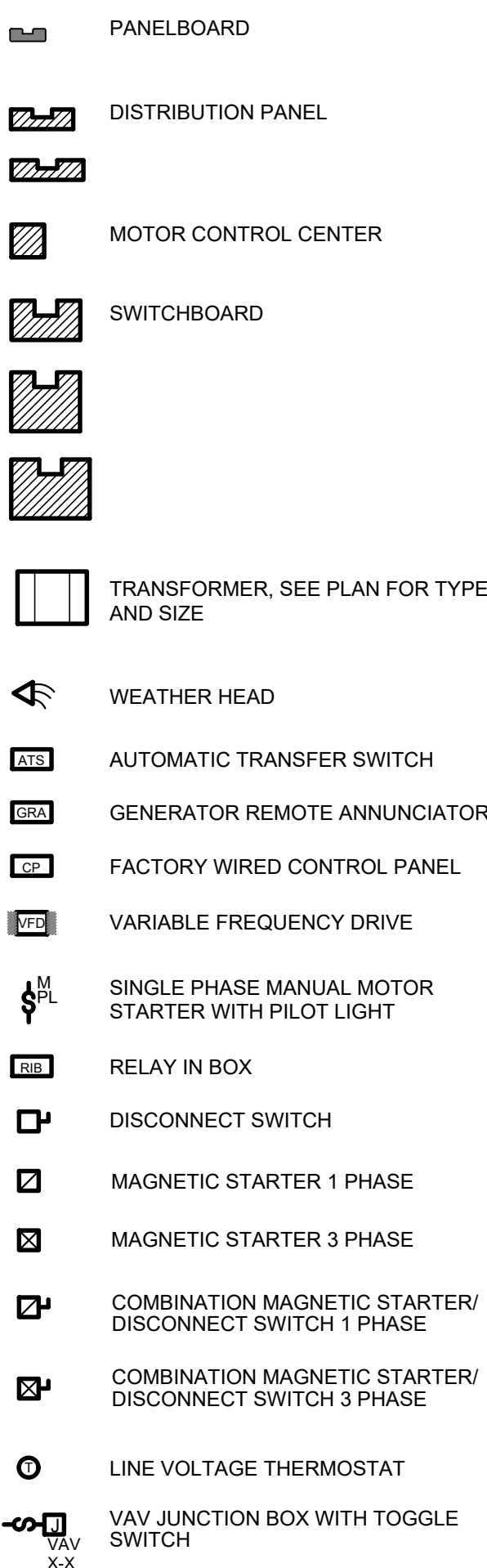
\* = B BLANK COVERPLATE ROUGH - IN  
D DATA  
I INTERCOM  
ICS INTERCOM CALL-IN STATION  
M MICROPHONE  
P PRINTER  
T TELEPHONE  
TV TELEVISION / MONITOR  
WAP WIRELESS ACCESS POINT

NOTE:  
FUTURE WIRELESS ACCESS POINT (WAP) PROVIDE 15'-0" SERVICE LOOP AT OUTLET. SERVICE LOOP SHALL BE COILED IN ACCESSIBLE CEILING SPACE.  
WHEN OUTLET IS LOCATED IN AREAS THAT ARE OPEN TO STRUCTURE, OUTLET SHALL BE MOUNTED TO STRUCTURE PROVIDE 15'-0" SERVICE LOOP AT OUTLET, SERVICE LOOP SHALL BE COILED AND TIED TO STRUCTURE

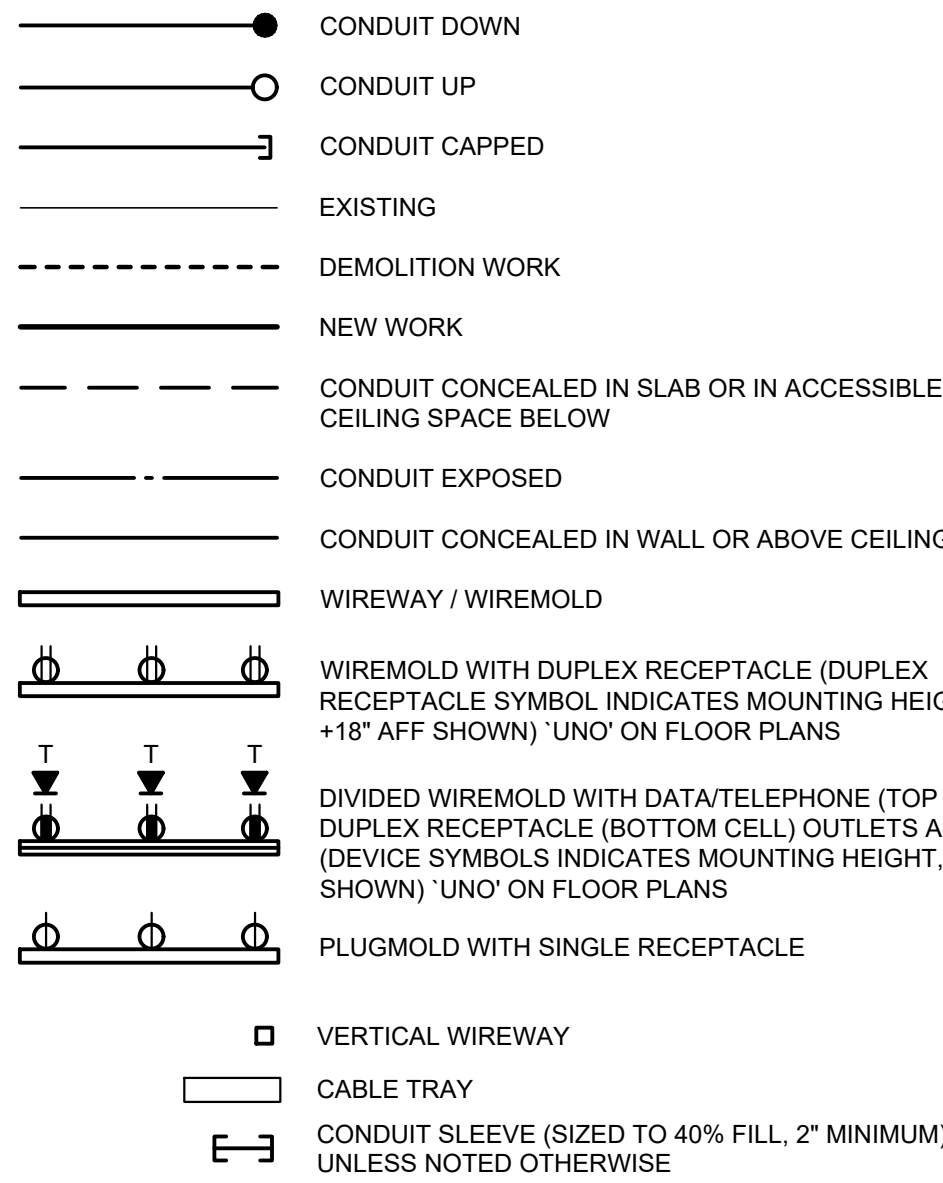
MISCELLANEOUS CONTROL DEVICES



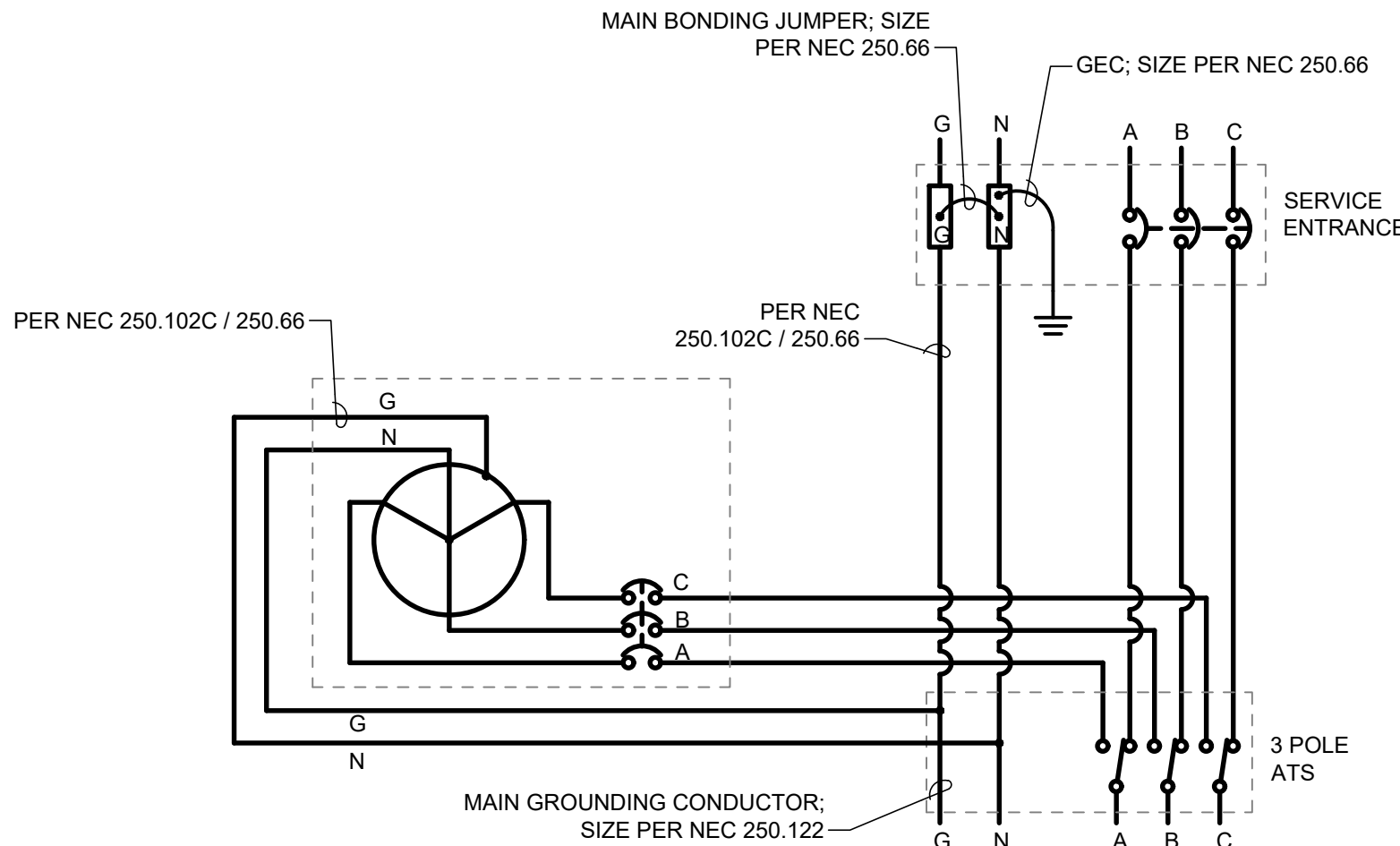
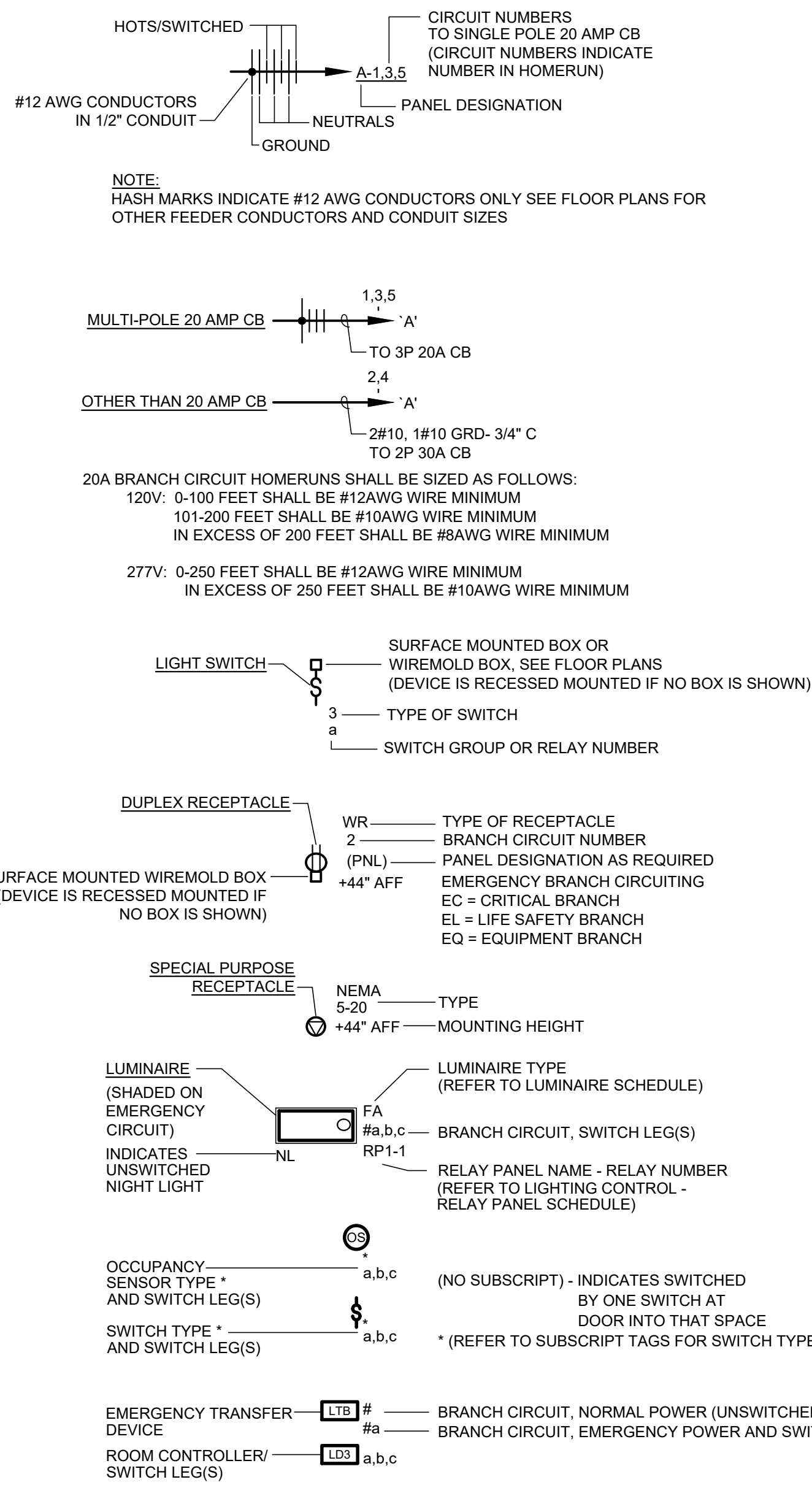
POWER EQUIPMENT



WIRING SYMBOLS



BRANCH CIRCUITING LEGEND



WITH CIRCUIT BREAKER  
AT GENERATOR

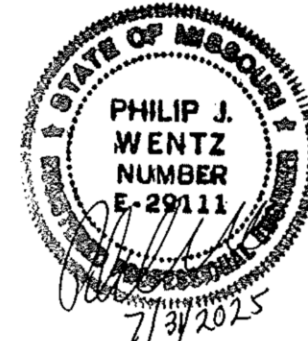
NEC PARAGRAPH REFERENCES ARE TO NEC 2014 CODE.

McCLURE  
ENGINEERING  
1000 Clark Avenue  
Saint Louis, Missouri 63102  
T 314-645-6232  
MEP Engineers  
McClure Engineering  
Professional Engineering  
Corporation  
Missouri State Certificate of  
Authority #000087

FARMINGTON CORRECTIONAL CENTER - SERVICE  
ADD ELECTRICAL CIRCUITS TO EMERGENCY  
GENERATOR FOOD SERVICES WAREHOUSE

FARMINGTON, MO 63640

1012 W. COLUMBIA ST.



PHIL WENTZ  
STATE LIC. # - 029111

NO	DATE	DESCRIPTION	BY	SET
0	07/01/25			

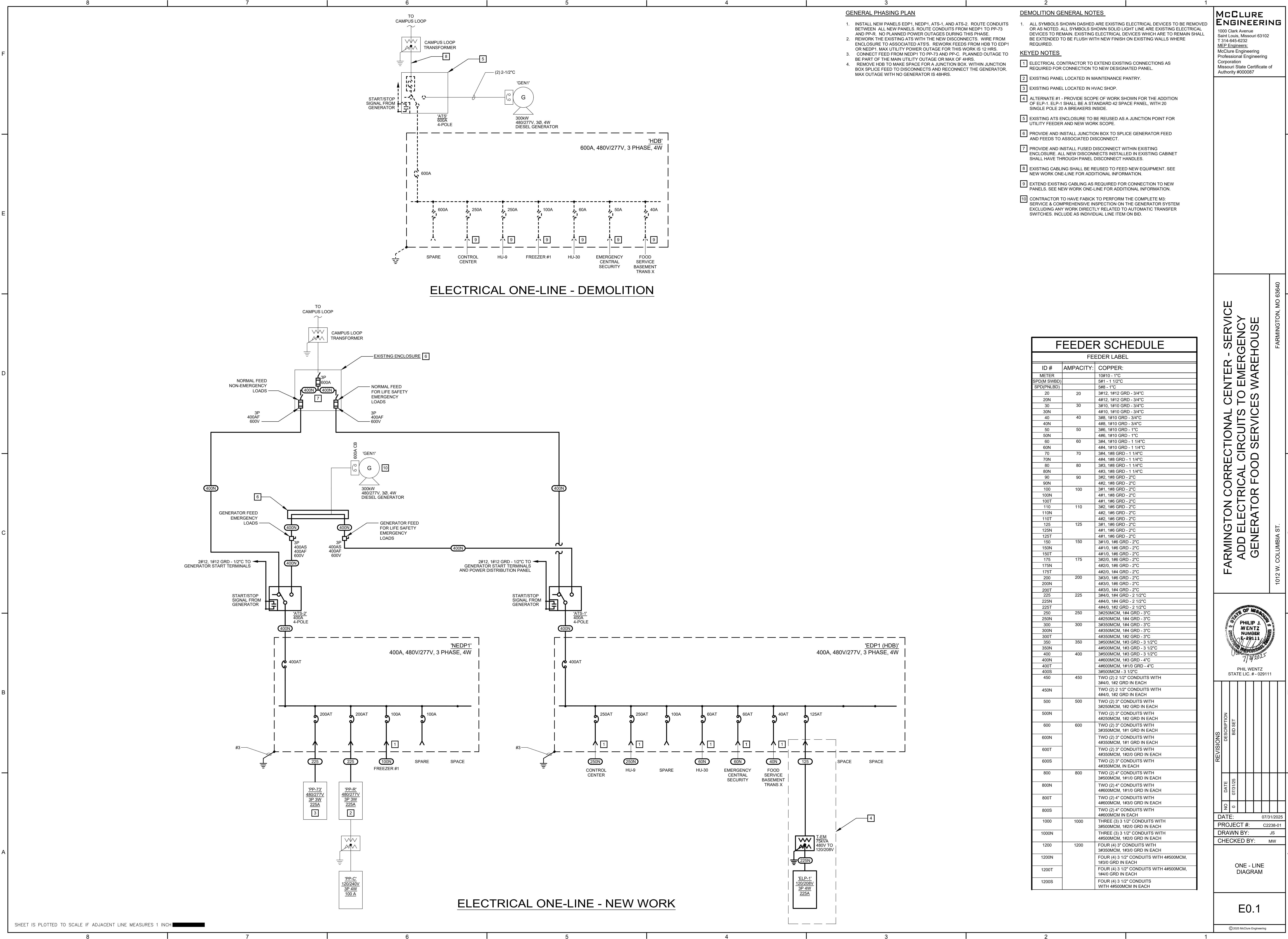
DATE: 07/31/2025  
PROJECT #: C2238-01  
DRAWN BY: JS  
CHECKED BY: MW

SYMBOLS,  
ABBREVIATIONS  
AND  
DETAILS

E0.0

©2025 McClure Engineering





**McCLURE ENGINEERING**  
1000 Clark Avenue  
Saint Louis, Missouri 63102  
T 314-645-0232  
MEP Engineers  
McClure Engineering  
Professional Engineering  
Corporation  
Missouri State Certificate of  
Authority #000087

FARMINGTON CORRECTIONAL CENTER - SERVICE  
ADD ELECTRICAL CIRCUITS TO EMERGENCY  
GENERATOR FOOD SERVICES WAREHOUSE

FARMINGTON, MO 63640

1012 W. COLUMBIA ST.

STATE OF MISSOURI  
PHILIP J. WENTZ  
NUMBER  
E-259111  
7/7/2025

PHIL WENTZ  
STATE LIC. # - 029111

REVISIONS

NO	DATE	DESCRIPTION
0	07/01/25	BID SET

DATE: 07/31/2025

PROJECT #: C2238-01

DRAWN BY: JS

CHECKED BY: MW

ONE - LINE  
DIAGRAM

E0.1

© 2025 McClure Engineering



- DEMOLITION GENERAL NOTES**
- ALL SYMBOLS SHOWN DASHED ARE EXISTING ELECTRICAL DEVICES TO BE REMOVED OR AS NOTED. ALL SYMBOLS SHOWN SOLID LIGHT LINE ARE EXISTING ELECTRICAL DEVICES TO REMAIN. EXISTING ELECTRICAL DEVICES WHICH ARE TO REMAIN SHALL BE EXTENDED TO BE FLUSH WITH NEW FINISH ON EXISTING WALLS WHERE REQUIRED.
  - ALL CONDUIT AND CABLING LEFT UNUSED FROM SCOPE OF WORK SHALL BE DISCONNECTED AND REMOVED BACK TO SOURCE.
- KEYED NOTES**
- EXISTING TRANSFORMER TO REMAIN.
  - EXISTING GENERATOR TO REMAIN.
  - EXISTING GENERATOR FUEL TANK TO REMAIN.
  - DISCONNECT AND REMOVE INTERNAL COMPONENTS OF ATS ENCLOSURE. ENCLOSURE SHALL REMAIN AND BE USED AS A JUNCTION POINT FOR UTILITY FEEDER AND NEW WORK SCOPE.
  - GENERATOR POWER DISCONNECT FOR EPD1.
  - GENERATOR POWER DISCONNECT FOR NEDP1.
  - PROPOSED CONDUIT TRENCHING ROUTE. CONTRACTOR TO SCAN ROUTE TO ENSURE NO EXISTING UTILITIES CONFLICT WITH PLANNED ROUTE PRIOR TO TRENCHING.
  - EXISTING ENCLOSURE. NORMAL POWER DISCONNECTS SHALL BE LOCATED INSIDE.
  - PROVIDE AND INSTALL FLOOR MOUNTED UNISTRUT SUPPORT AS REQUIRED FOR ALL WALL MOUNTED ELECTRICAL EQUIPMENT IN CAGE AREA NOT LOCATED ON A PERMANENT WALL. ALL UNISTRUT MOUNTS SHALL PROVIDE A MINIMUM OF 6" BETWEEN THE FENCING AND THE NEW EQUIPMENT LOCATIONS.
  - DISCONNECT AND REMOVE ALL CONDUIT AND CABLING FROM EXISTING PANELS BACK TO ORIGINAL SOURCE.
  - REFEED EXISTING PANELS FROM NEDP1.

**McCLURE ENGINEERING**  
1000 Clark Avenue  
Saint Louis, Missouri 63102  
T 314-645-6232  
MEP Engineers  
McClure Engineering  
Professional Engineering  
Corporation  
Missouri State Certificate of  
Authority #000087

**FARMINGTON CORRECTIONAL CENTER - SERVICE  
ADD ELECTRICAL CIRCUITS TO EMERGENCY  
GENERATOR FOOD SERVICES WAREHOUSE**

FARMINGTON, MO 63640

1012 W. COLUMBIA ST.

**PHILIP J. WENTZ  
NUMBER  
E-29111**

PHIL WENTZ  
STATE LIC. # - 029111

NO	DATE	DESCRIPTION
0	07/31/25	BID SET

DATE: 07/31/2025

PROJECT #: C2238-01

DRAWN BY: JS

CHECKED BY: MW

SITE PLAN  
DEMOLITION AND  
NEW WORK

**E1.0**

©2025 McClure Engineering