

ADDENDUM NO. 1

TO: PLANS AND SPECIFICATIONS FOR STATE OF MISSOURI

Repairs to Storm Water Components
Algoa Correctional Center
Jefferson City, Missouri
PROJECT NO.: C2306-02

Bid Opening Date: 1:30 PM, Thursday, January 18, 2024 (Not Changed)

Bidders are hereby informed that the construction Plans and/or Specifications are modified as follows:

SPECIFICATION CHANGES:

NONE

DRAWINGS CHANGES:

1. Sheet CD-001 – Existing Site & Demo Plan
 - a. REVISED Sheet is attached. Additional notes/updates are in RED.
2. Sheet C-001 – Proposed Site Plan
 - a. REVISED Sheet is attached. Additional notes/updates are in RED.
3. Sheet D-003 – Stormwater Details
 - a. ADD the following note to Detail 2, Storm Area Drain Inlet, Plan View:

“Regardless of the size of the concrete precasting, the INLET (metal casting) shall remain 2’x2’ (24”x24”).”

GENERAL COMMENTS:

1. The Pre-Bid Meeting was held January 3, 2024, followed by a walk-through of the project site. The Pre-Bid Meeting sign-in sheet is attached.
2. Bidders desiring to perform a site inspection should contact Mike Karaff, (573) 751-3954, Mike.Karaff@doc.mo.gov to schedule a time to inspect the site.
3. Please contact April Howser, Contract Specialist, at (573) 751-0053, April.Howser@oa.mo.gov for questions about bidding procedures, MBE\WBE\SDVE Goals, and other submittal requirements.
4. The deadline for technical questions is Wednesday, January 10, 2024 at noon (12 pm).
5. Changes to, or clarification of, the bid documents are only made as issued in the addenda.
6. All correspondence with respect to this project must include the State of Missouri project number as indicated above.

7. Current Planholders list is available online at: [C2306-02 Repairs to Storm Water Components-Algoa Correctional Center :: Plan Holders :: State of Missouri Office of Administration \(oafmdcplanroom.com\)](https://oafmdcplanroom.com)
8. Prospective Bidders contact American Document Solutions, 1400 Forum Blvd Suite 7A, Columbia MO 65203, (573) 446-7768 to get plans and specifications.
9. **All bids shall be submitted on the bid form without additional terms and conditions, modifications, or stipulations. Each space on the bid form shall be properly filled including an amount for the alternate. Failure to do so will result in rejection of the bid.**
10. **MBE/WBE/SDVE participation requirements can be found in DIVISION 00. The MBE/WBE/SDVE participation goals are 10%/10%/3%, respectively. Only certified firms as of the bid opening date can be used to satisfy the MBE/WBE/SDVE participation goals for this project. If a bidder is unable to meet a participation goal, a Good Faith Effort Determination Form must be completed. Failure to complete this process will result in rejection of the bid.**

ATTACHMENTS:

1. Pre-Bid Meeting Sign-In Sheet
2. REVISED Sheet CD-001
3. REVISED Sheet C-001

January 9, 2024

END ADDENDUM NO. 1

Pre-Bid Meeting Attendance Sheet
Repairs to Storm Water Components
Algoa Correctional Center
Jefferson City, Missouri
Project No. C2306-02
1:30 PM, January 3, 2024

Name & Title	Company Name Type of Contracting	MBE/WBE/ SDVE Status	Phone	E-Mail Address
Scott Zeller, Project Manager	OA-FMDC	-	573-751-2668	Scott.Zeller@oa.mo.gov
Joe Coffelt, Project Manager	Dept. of Corrections	-	573-522-4678	Joe.Coffelt@doc.mo.gov
Kenny Bryant, PPS-II	Dept. of Corrections (Tipton)	-	660-433-2031	Kenny.Bryant@doc.mo.gov
April Howser	OA-FMDC Contract Specialist	-	573-751-0053	April.Howser@oa.mo.gov
Mike Hall, A/E Representative	McClure Engineering	-	573-476-3211	mhall@mecresults.com
Dustin Cooper, Construction Administrator	OA-FMDC	-	573-526-0711	Dustin.Cooper@oa.mo.gov

Pre-Bid Meeting Attendance Sheet
Repairs to Storm Water Components
Algoa Correctional Center
Jefferson City, Missouri
Project No. C2306-02
1:30 PM, January 3, 2024

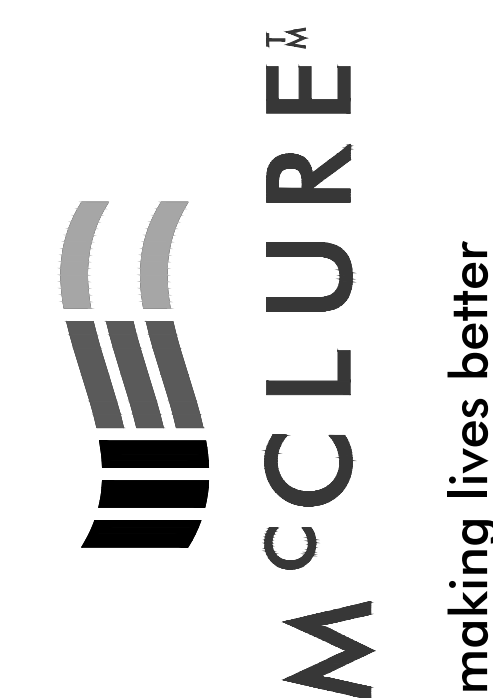
Name & Title	Company Name Type of Contracting	MBE/WBE/ SDVE Status	Phone	E-Mail Address
Greg Wykes, Project Manager	Dept. of Corrections	-	573-526-6512	Greg.Wykes@doc.mo.gov
Mike Karaff, PPS-III <i>MK</i>	Dept. of Corrections (Algoa)	-	573-751-3954	Mike.Karaff@doc.mo.gov
Bret Fike, PPS-III	Dept. of Corrections (Booneville)	-	660-537-1581	Bret.Fike@doc.mo.gov
Carlynn Renoston Project Manager	S&A Equipment and Builders		573-544 8749	Admin @ S&A Equipment Builders .com
Jeff Braun Project Manager	R&S Tower Services		314-402-3565	Jeff.Braun @ RNS tower, com

Pre-Bid Meeting Attendance Sheet
Repairs to Storm Water Components
Algoa Correctional Center
Jefferson City, Missouri
Project No. C2306-02
1:30 PM, January 3, 2024

Name & Title	Company Name Type of Contracting	MBE/WBE/ SDVE Status	Phone	E-Mail Address
Thomas Brown	TD Doherty Excavating			
Paul Baker	PRC		573-489-6470	rhol_baker@yahoo.com
Bryant Gains	Sam Gainer Conc		573-257 6123	brycantat55@gmail.com
John O KE-THOMAS P/M	OKE-THOMAS ASSOC.	MBE	417-863- 6262	JOHN@OKE-THOMAS.COM



1901 Pennsylvania Dr.
Columbia, MO 65202
573.814.1568 |
www.mcclosure.com
MO CERTIFICATE OF
AUTHORITY
E-2006023253
S-2012009395
EXPIRES DEC. 31, 2024



OFFICE OF ADMINISTRATION
DIVISION OF FACILITIES
MANAGEMENT,
DESIGN & CONSTRUCTION

DEPARTMENT OF
CORRECTIONS

REPAIRS TO
STORM WATER
COMPONENTS

ALGOA CORR. CENTER
8501 NO MORE VICTIMS RD.
JEFFERSON CITY, MO 65101

PROJECT NO. C2306-02
SITE NO. 7006
ASSET NO. 9327006056

REVISION: ADDENDUM #1
DATE: 01/09/2024
REVISION: _____
DATE: _____
REVISION: _____
DATE: _____
ISSUE DATE: 11/02/2023

CAD DWG FILE: C2306-01-AL-CD-SITE-01
DRAWN BY: JMB
CHECKED BY: MMH
DESIGNED BY: MMH

SHEET TITLE:
EXISTING SITE &
DEMO PLAN

SHEET NUMBER:

CD-001

5 OF 15 SHEETS
NOVEMBER 02, 2023

PROJECT CONTROL POINTS TABLE				PROJECT CONTROL POINTS TABLE					
CP#	NORTHING	EASTING	ELEV.	DESCRIPTION	CP#	NORTHING	EASTING	ELEV.	DESCRIPTION
200	991102.15'	1768397.31'	667.72'	1/2" REBAR W/BC	205	990495.84'	1768281.54'	651.18'	CUT CROSS
201	990549.32'	1768158.37'	643.74'	1/2" REBAR W/BC	206	990290.09'	1768094.35'	649.51'	PK NAIL
202	990776.75'	1768478.95'	665.38'	CUT CROSS	207	990380.42'	1767743.89'	587.61'	PK NAIL
203	990475.19'	1768377.65'	655.68'	CUT CROSS	208	991096.86'	1768586.49'	676.08'	PK NAIL
204	990515.18'	1768245.35'	648.75'	CUT CROSS	209	990997.91'	1768559.26'	673.54'	PK NAIL

PROJECT BENCHMARK TABLE				
BM#	NORTHING	EASTING	ELEV.	DESCRIPTION
100	990493.14'	1767907.10'	605.97'	"V" CUT N RIM MH

HORIZONTAL DATUM: MISSOURI STATE PLANE - CENTRAL ZONE - US FOOT
SCALED ABOUT POINT #200 WITH A GROUND SCALE FACTOR OF 1.0000747527

VERTICAL DATUM: NAVD88, GEOID18

UTILITY WARNING:

THE UTILITIES DEPICTED ON THIS DOCUMENT HAVE BEEN LOCATED FROM FIELD SURVEY INFORMATION AND/OR RECORDS OBTAINED. THE SURVEYOR MAKES NO GUARANTEE THAT THE UTILITIES OR SUBSURFACE FEATURES SHOWN COMPRISE ALL SUCH ITEMS IN THE AREA, EITHER IN SERVICE OR ABANDONED. THE SURVEYOR FURTHER DOES NOT WARRANT THAT THE UTILITIES OR SUBSURFACE FEATURES SHOWN ARE IN THE EXACT LOCATION INDICATED EXCEPT WHERE NOTED AS QUALITY LEVEL A.

UTILITY QUALITY LEVELS:

UTILITY QUALITY LEVELS ARE BASED ON THE C/ASCE 38-02 STANDARD.

UTILITY QUALITY LEVEL A:
PRECISE HORIZONTAL AND VERTICAL LOCATION OF UTILITIES OBTAINED BY THE ACTUAL EXPOSURE (OR VERIFICATION OF PREVIOUSLY EXPOSED AND SURVEYED UTILITIES) AND SUBSEQUENT MEASUREMENT OF SUBSURFACE UTILITIES

UTILITY QUALITY LEVEL B:
INFORMATION OBTAINED THROUGH THE APPLICATION OF APPROPRIATE SURFACE GEOPHYSICAL METHODS TO DETERMINE THE EXISTENCE AND APPROXIMATE HORIZONTAL POSITION OF SUBSURFACE UTILITIES.

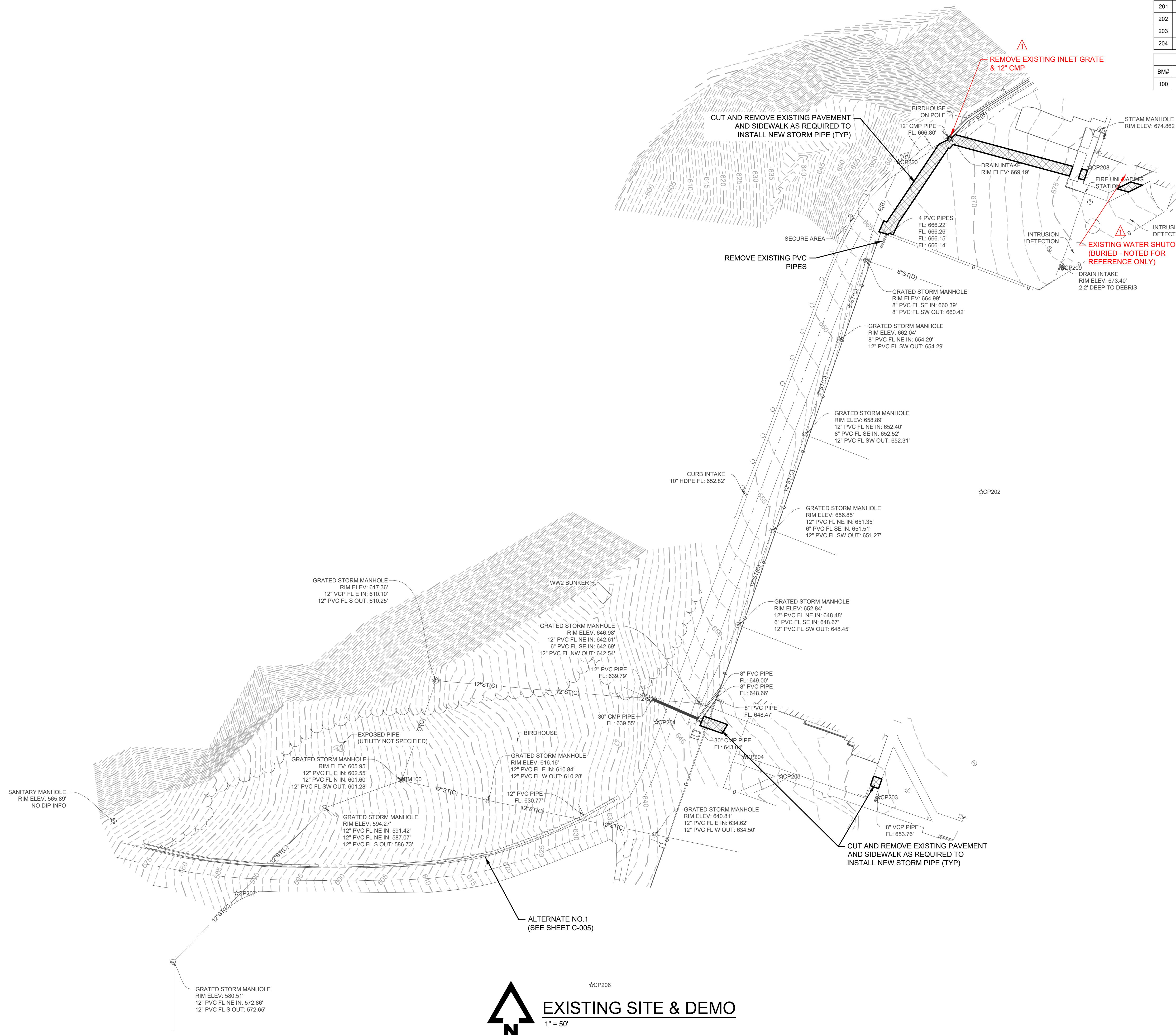
UTILITY QUALITY LEVEL C:
INFORMATION OBTAINED BY SURVEYING AND PLOTTING VISIBLE ABOVE-GROUND UTILITY FEATURES AND BY USING PROFESSIONAL JUDGEMENT IN CORRELATING THIS INFORMATION TO QUALITY LEVEL D INFORMATION.

UTILITY QUALITY LEVEL D:
INFORMATION DERIVED FROM EXISTING RECORDS OR ORAL RECOLLECTIONS.

ADDITIONALLY IN THE CASE OF MULTIPLE OWNERS OF THE SAME UTILITY TYPE SAID UTILITIES WILL BE ABBREVIATED WITH AN OWNER NUMBER (1, 2, 3, ETC) AND REFERENCED IN THE MISSOURI ONE CALL UTILITY INFORMATION SECTION.

EXAMPLES:

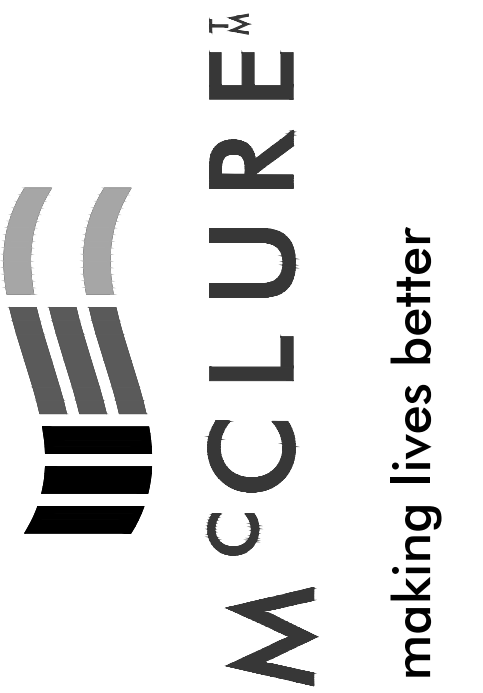
— C1(B) — UNDERGROUND COMMUNICATIONS - OWNER 1
— C2(B) — UNDERGROUND COMMUNICATIONS - OWNER 2



EXISTING SITE & DEMO
1" = 50'



1901 Pennsylvania Dr.
Columbia, MO 65202
572.814.1568 |
www.mclurevision.com
MO CERTIFICATE OF
AUTHORITY
E-2006023253
S-2012009395
EXPIRES DEC. 31, 2024



OFFICE OF ADMINISTRATION
DIVISION OF FACILITIES
MANAGEMENT,
DESIGN & CONSTRUCTION

DEPARTMENT OF
CORRECTIONS

REPAIRS TO
STORM WATER
COMPONENTS

ALGOA CORR. CENTER
8501 NO MORE VICTIMS RD.
JEFFERSON CITY, MO 65101

PROJECT NO. C2306-02
SITE NO. 7006
ASSET NO. 9327006056

REVISION: ADDENDUM #1
DATE: 01/09/2024
REVISION: _____
DATE: _____
REVISION: _____
DATE: _____
ISSUE DATE: 11/02/2023

CAD DWG FILE: C2306-01-AL-C-SITE-01
DRAWN BY: JMB
CHECKED BY: MMH
DESIGNED BY: MMH

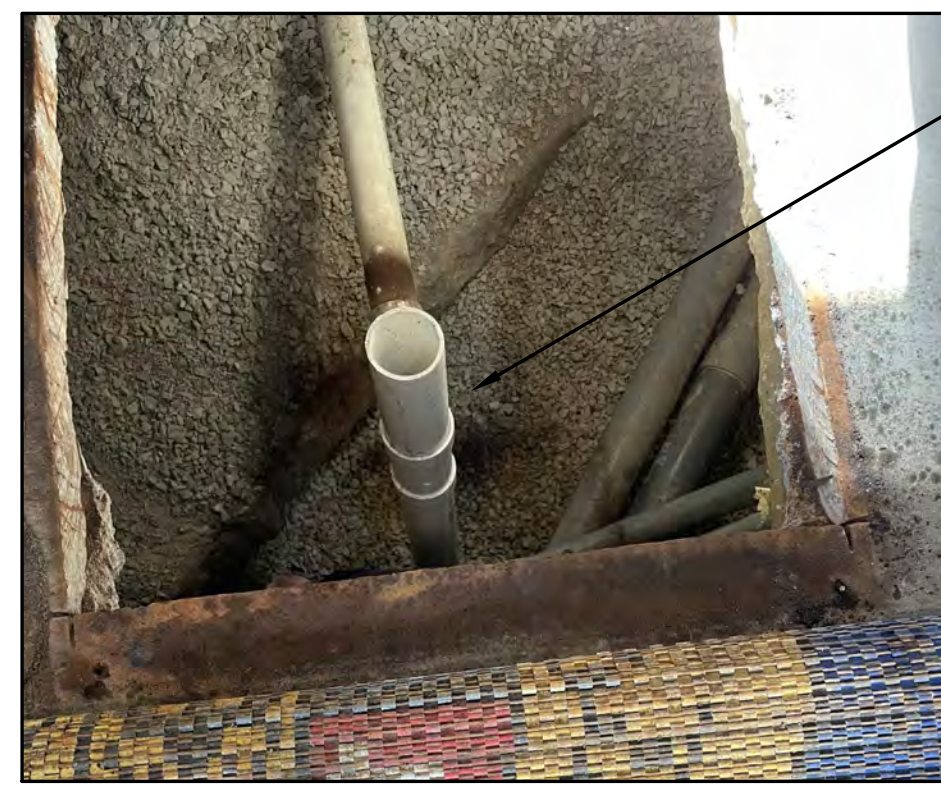
SHEET TITLE:
PROPOSED SITE
PLAN

SHEET NUMBER:

C-001

6 OF 15 SHEETS
NOVEMBER 02, 2023

PROJECT CONTROL POINTS TABLE			
CP#	NORTHING	EASTING	DESCRIPTION
205	990495.84'	1768281.54'	651.18' CUT CROSS
206	990290.09'	1768094.35'	649.51' PK NAIL
207	990380.42'	1767743.89'	587.61' PK NAIL
208	991096.86'	1768586.49'	676.08' PK NAIL
209	990997.91'	1768559.26'	673.54' PK NAIL



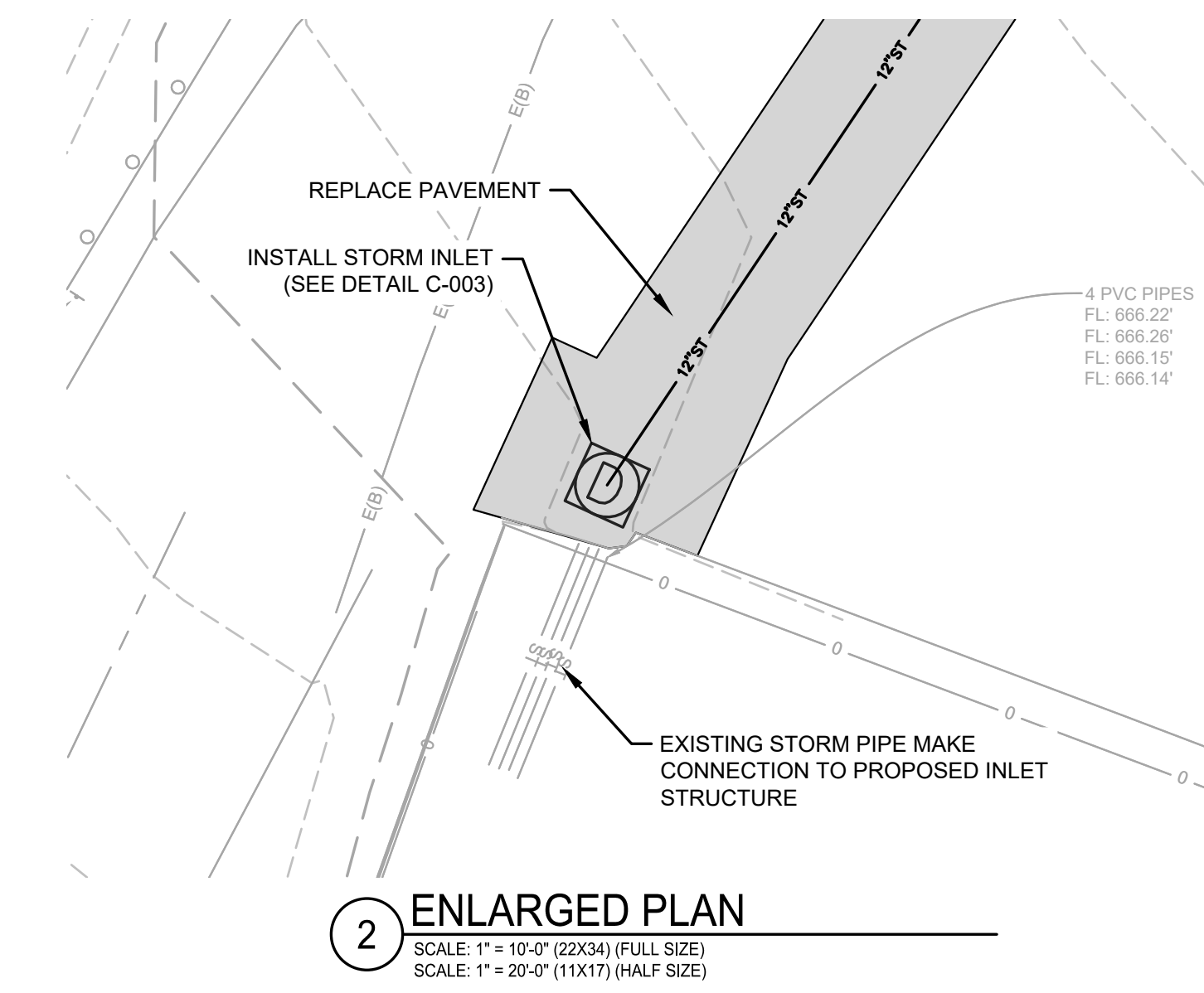
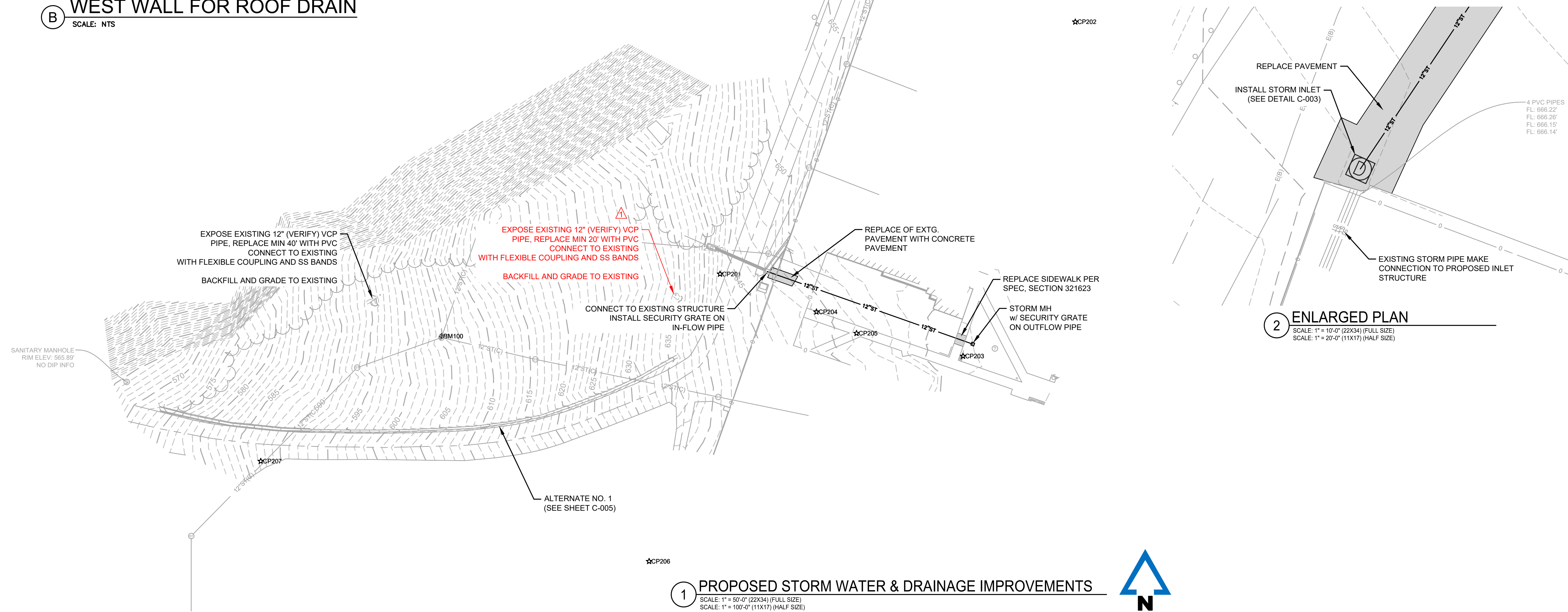
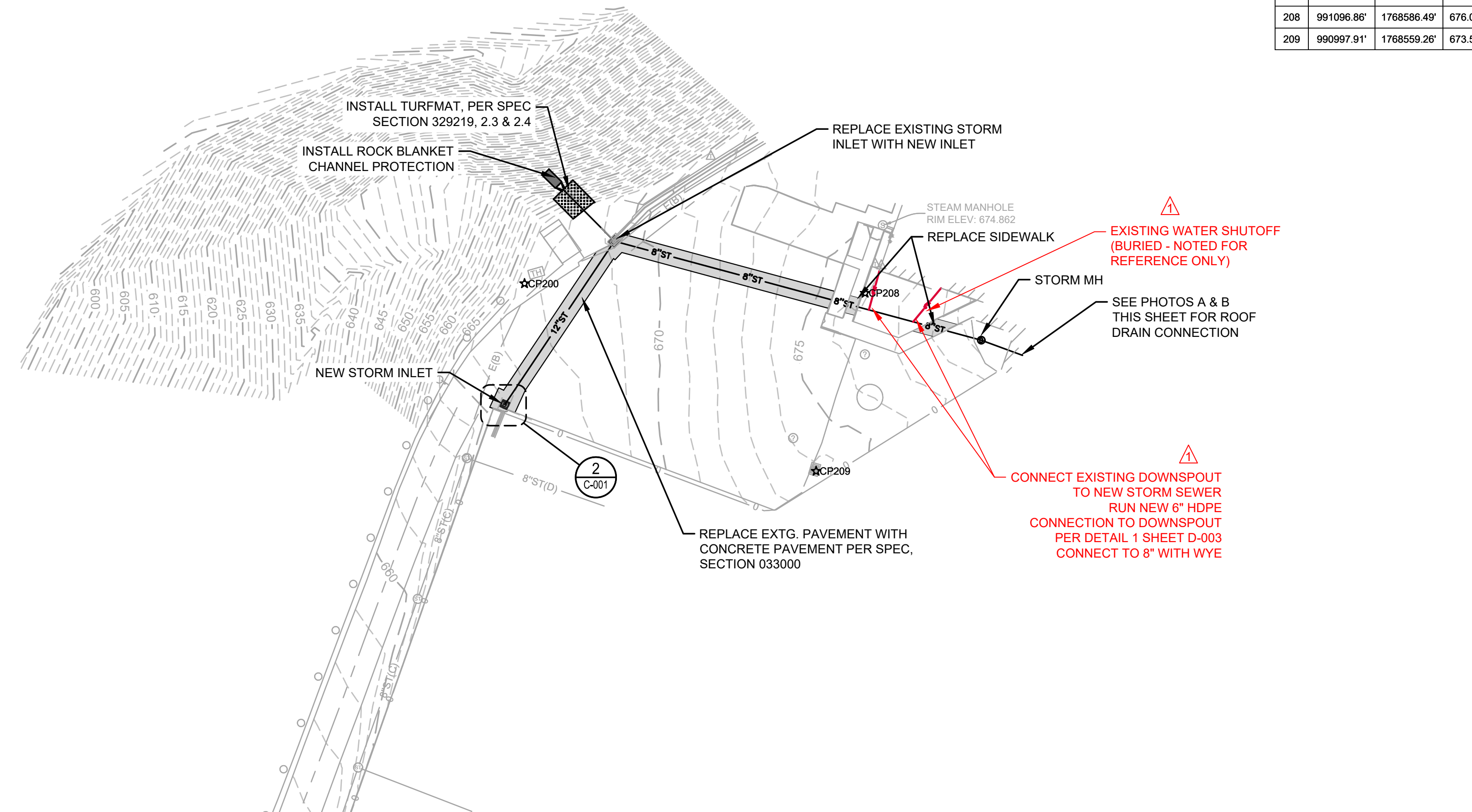
CONNECT NEW 8" PIPE
TO EXISTING ROOF DRAIN.
PENETRATE THROUGH WEST
FOUNDATION WALL OF
BREEZEWAY (SEE D-004)

A STORM CONNECTION IN BREEZEWAY
SCALE: NTS



ROOF DRAIN CONNECTION TO BE
ROUTED UNDER FOOTING PER
D-004 REPLACE LANDSCAPING

B WEST WALL FOR ROOF DRAIN
SCALE: NTS



1 PROPOSED STORM WATER & DRAINAGE IMPROVEMENTS
SCALE: 1" = 50'-0" (22X34) (FULL SIZE)
SCALE: 1" = 100'-0" (11X17) (HALF SIZE)

