

ADDENDUM NO. 2

TO: PLANS AND SPECIFICATIONS FOR THE STATE OF MISSOURI

Install Single Generator Backup
Ozark Correctional Center
Fordland, MO
PROJECT NO. C2414-01

Bid Opening Date: 1:30 PM, April 29, 2025 (Changed)

Bidders are hereby informed that the construction Plans and/or Specifications are modified as follows:

SPECIFICATION CHANGES:

None

DRAWING CHANGES:

1. Sheet C-101
 - a. Revised detail 3/C-101: Standard Duty Asphalt Pavement per attached sheet C-101.
 - i. Removed reference note to geotechnical report.
 - b. Revised detail 5/C-101: Generator Pad per attached sheet C-101.
2. Sheet E-100
 - a. Added private primary electric riser pole and associated overhead primary distribution per attached sheet E-100.
3. Sheet E-200
 - a. Revised detail 1/E-200: Electrical Riser per attached sheet E-200.
 - i. Added private primary electric riser pole and associated overhead primary distribution.
 - ii. Corrected detail references.
 - b. Revised detail 2/E-200: Demo Electrical Riser per attached sheet E-200.
4. Sheet E-202
 - a. Revised detail 1/E-202: Main Switchgear "MSG" Elevation per attached sheet E-202.
 - i. Revised circuit breaker frame and trip ratings.
5. Sheet E-203
 - a. Revised detail 1/E-203: Primary Riser per attached sheet E-203.
 - b. Revised detail 4/E-203: Sectionalization Cabinet per attached sheet E-203.
6. Sheet E-300
 - a. Revised temperature rise and winding material on Transformer Schedule.

ADDENDUM NO. 2

GENERAL COMMENTS:

1. The Pre-Bid Meeting was held April 9th, 2025, followed by a walk-through of the project site.
2. If an additional site visit is necessary, please contact Shawn Connelly, 417-767-4491, shawn.connelly@doc.mo.gov who will coordinate with the on-site personnel.
3. Please contact April Howser, contract specialist, at April.Howser@oa.mo.gov for questions about bidding procedures, MBE/WBE/SDVE goals, good faith effort forms, and bid submittal requirements.
4. All bids shall be submitted on the provided bid forms without additional terms and conditions, modifications, or stipulations. Each space on the bid forms shall be properly filled. Failure to do so will result in rejection of the bid.
5. MBE/WBE/SDVE participation requirements can be found in DIVISION 00. The MBE/WBE/SDVE participation goals are 0%/0%/3%, respectively. All MBE, WBE, and SDVE contractors, subcontractors, and suppliers must be certified by the State of Missouri, Office of Equal Opportunity. No other certifications from other Missouri certifying agencies will be accepted. If a bidder is unable to meet a participation goal, a Good Faith Effort Determination Form must be completed. Failure to complete this process will result in rejection of the bid.
6. Changes to, or clarification of, the bid documents are only made as issued in the addenda.
7. All correspondence with respect to this project must include the State of Missouri project number as indicated above.
8. Current Planholders list available online at: <https://oa.mo.gov/facilities/bid-opportunities/bid-listing-electronic-plans> Prospective Bidders contact American Document Solutions, 1400 Forum Blvd Suite 7A, Columbia MO 65203, 573-446-7768 to order official plans and specifications.

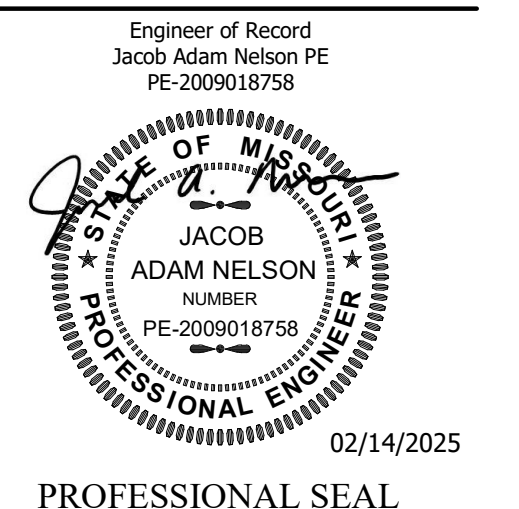
ATTACHMENTS:

1. C-101
2. E-100
3. E-200
4. E-202
5. E-203
6. E-300

END ADDENDUM NO. 2

KEYNOTE LEGEND	
KEY VALUE	KEYNOTE TEXT
03.01	FURNISH AND INSTALL CONCRETE BOLLARD. REFER TO DETAIL 2/C101.

STATE OF MISSOURI
MIKE KEHOE,
GOVERNOR



True Engineering Group LLC
Missouri State Certificate of Authority #E-2016000752

OFFICE OF ADMINISTRATION
DIVISION OF FACILITIES
MANAGEMENT,
DESIGN AND CONSTRUCTION

DEPARTMENT OF
CORRECTIONS

OZARK CORRECTIONAL
CENTER - INSTALL SINGLE
GENERATOR BACKUP

929 HONOR CAMP LN,
FORDLAND, MO 65652

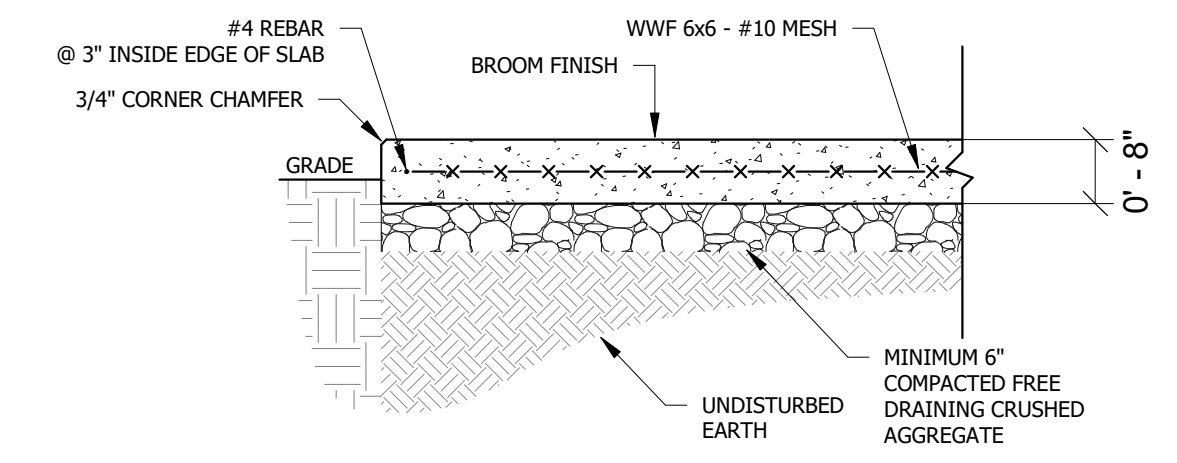
PROJECT # C2414-01
SITE # 7003
FACILITY # 9327003081

REVISION:
DATE:
REVISION:
DATE:
REVISION: ADDENDUM 01
DATE: 04/16/2025
ISSUE DATE: 02/14/2025

CAD DWG FILE: C2414-01
DRAWN BY: AM
CHECKED BY: AH
DESIGNED BY: AH

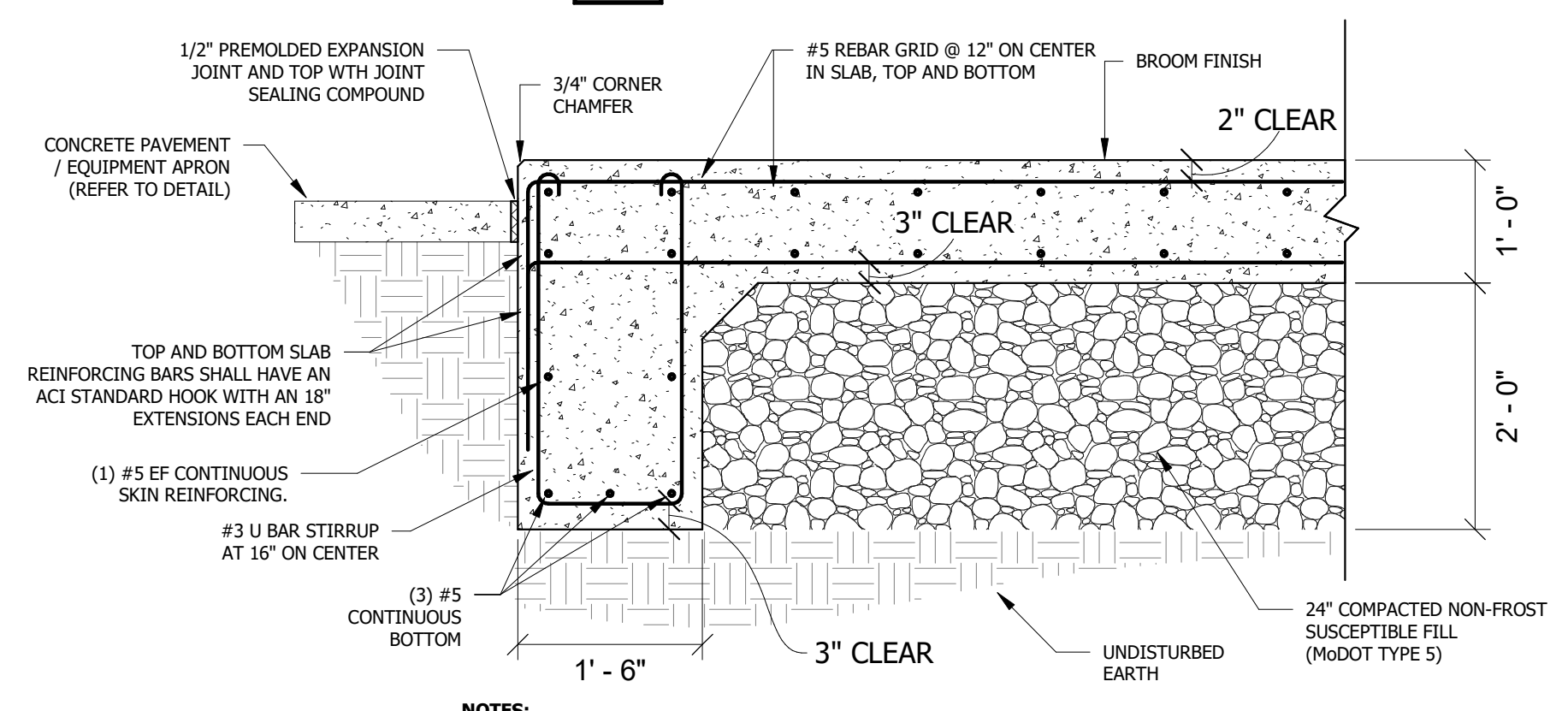
SHEET TITLE:
ENLARGED SITE
IMPROVEMENT
PLAN

SHEET NUMBER:
C-101
03 OF 12 SHEETS
02/14/2025



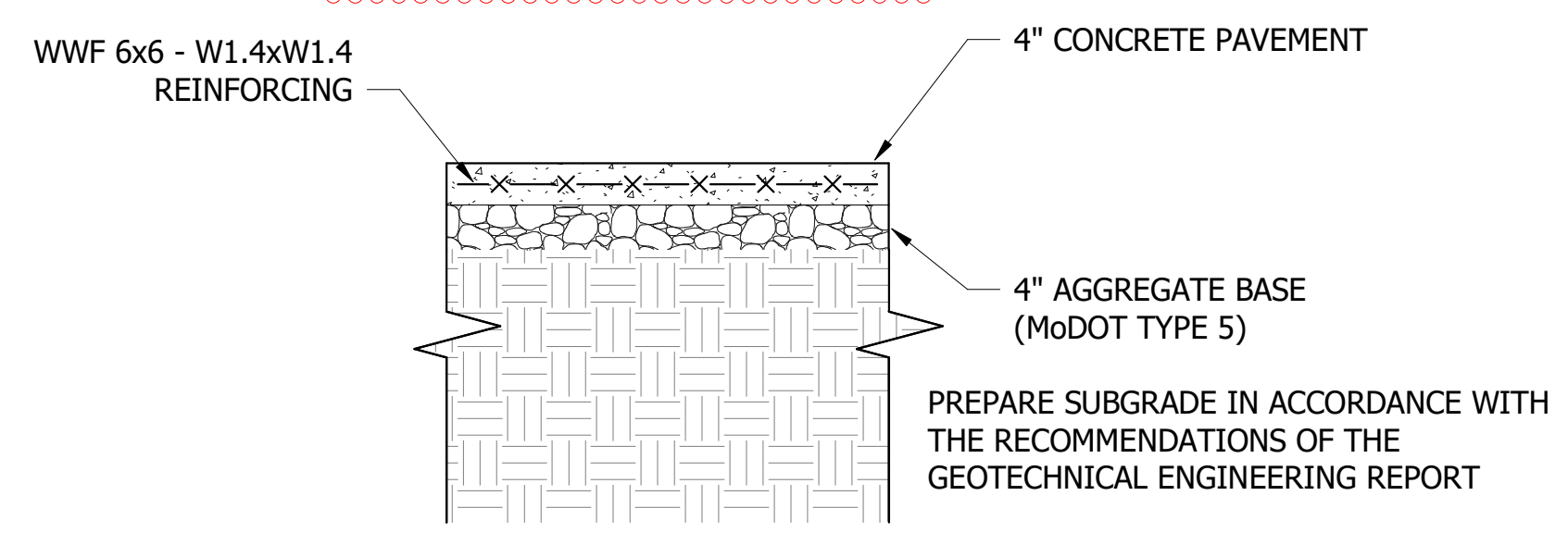
- NOTES:**
- COORDINATE DIMENSIONS OF PAD WITH EQUIPMENT AND INCLUDE SUFFICIENT SPACE ON ALL SIDES FOR MAINTENANCE.
 - INSTALL EQUIPMENT ANCHOR BOLTS AS REQUIRED.

6 EQUIPMENT PAD
NOT TO SCALE



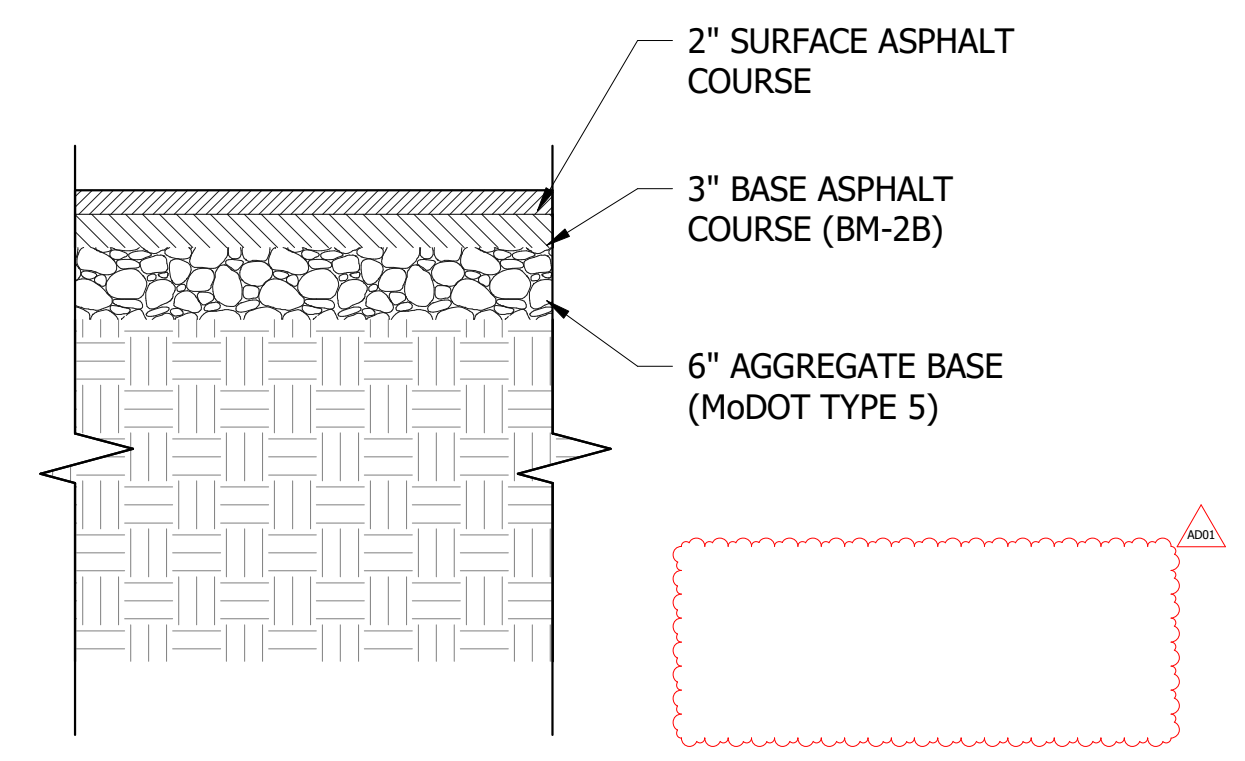
- NOTES:**
- COORDINATE DIMENSIONS OF PAD WITH EQUIPMENT AND INCLUDE SUFFICIENT SPACE ON ALL SIDES FOR MAINTENANCE.
 - INSTALL EQUIPMENT ANCHOR BOLTS AND VIBRATION ISOLATION PER MANUFACTURERS REQUIREMENTS. SUBMIT ANCHORAGE DETAILS TO ENGINEER FOR REVIEW PRIOR TO PLACEMENT OF EQUIPMENT PAD. GENERATION PAD DESIGN MAY NEED TO BE MODIFIED BASED ON ANCHORAGE DETAIL REQUIREMENTS.
 - VERIFY SLAB FLATNESS AND LEVELNESS REQUIREMENTS WITH MANUFACTURER.

5 GENERATOR PAD
NOT TO SCALE



CONTRACTOR SHALL SUBMIT A PAVEMENT JOINTING PLAN AND JOINT DETAILS FOR ALL CONCRETE PAVEMENT FOR APPROVAL BY THE ENGINEER.

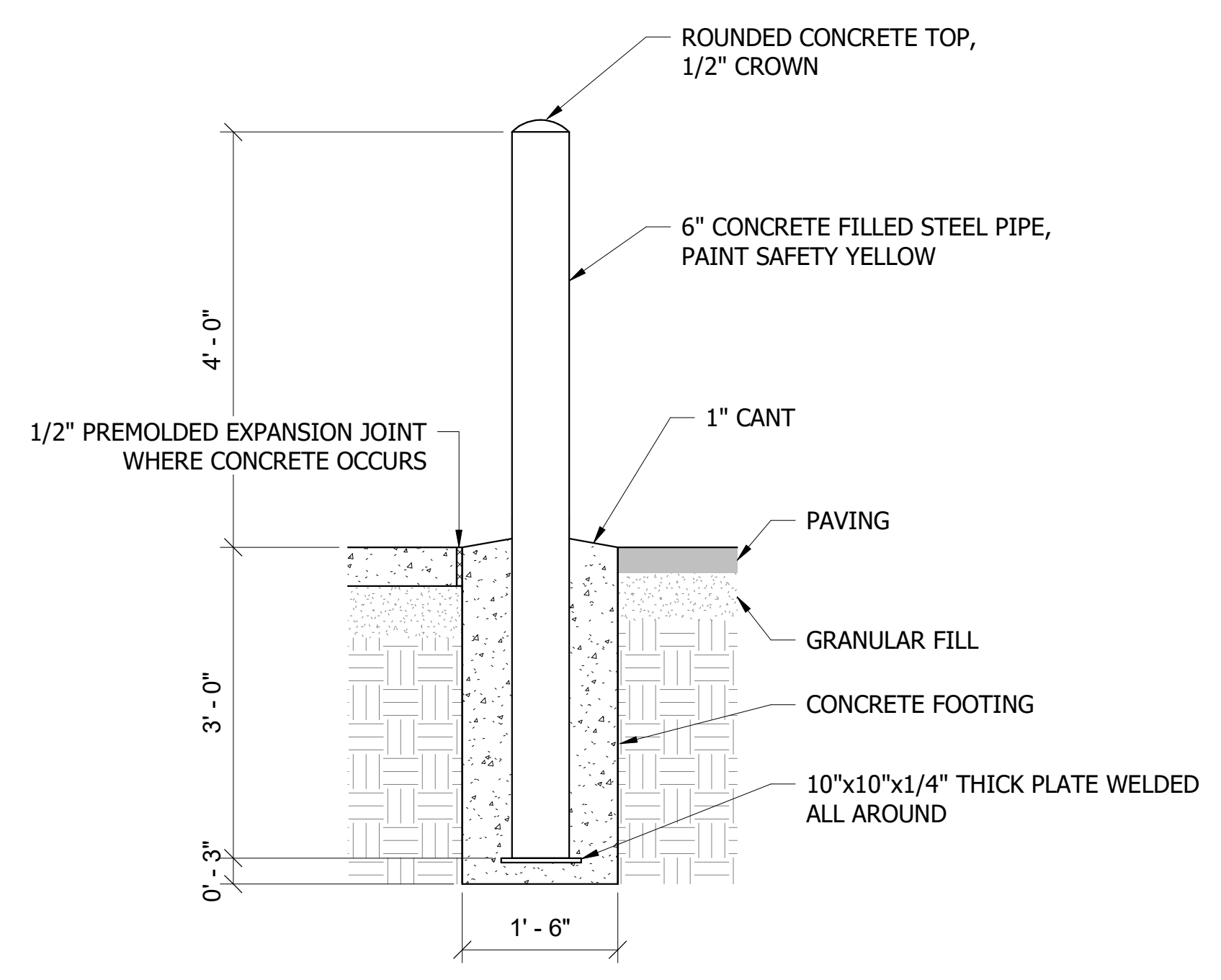
4 CONCRETE PAVEMENT/EQUIPMENT APRON
NOT TO SCALE



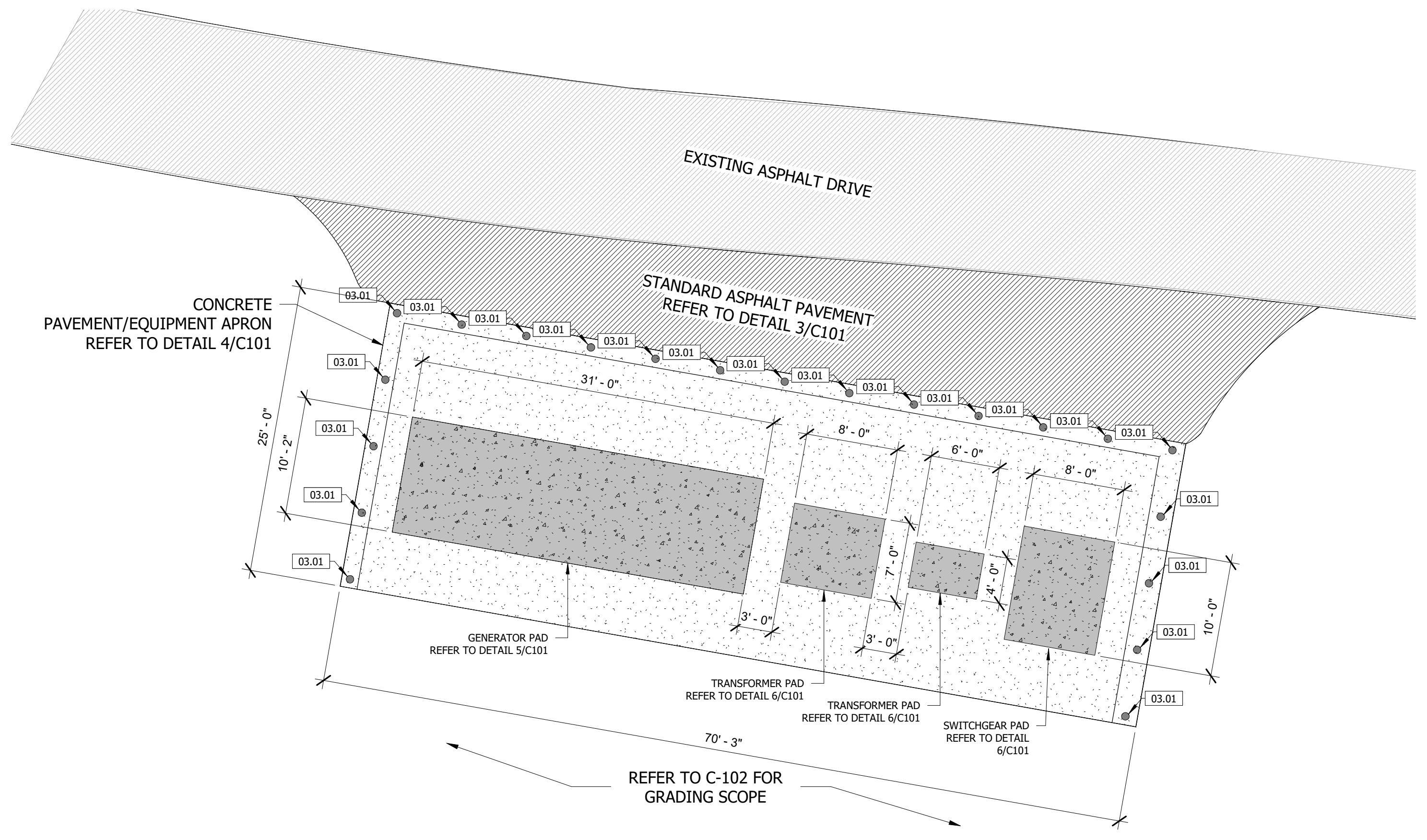
3 STANDARD DUTY ASPHALT PAVEMENT
NOT TO SCALE

EQUIPMENT PAD NOTES:

EQUIPMENT PAD DIMENSIONS SHALL BE SIZED TO EXTEND 6" MINIMUM ON ALL SIDES OF EQUIPMENT. COORDINATE DIMENSIONS OF EQUIPMENT WITH ELECTRICAL CONTRACTOR.



2 BOLLARD
NOT TO SCALE



1 ENLARGED SITE IMPROVEMENT PLAN
1/8" = 1'-0"

DIVISION 26 SPECIFICATIONS:

26 05 00 - COMMON WORK FOR ELECTRICAL

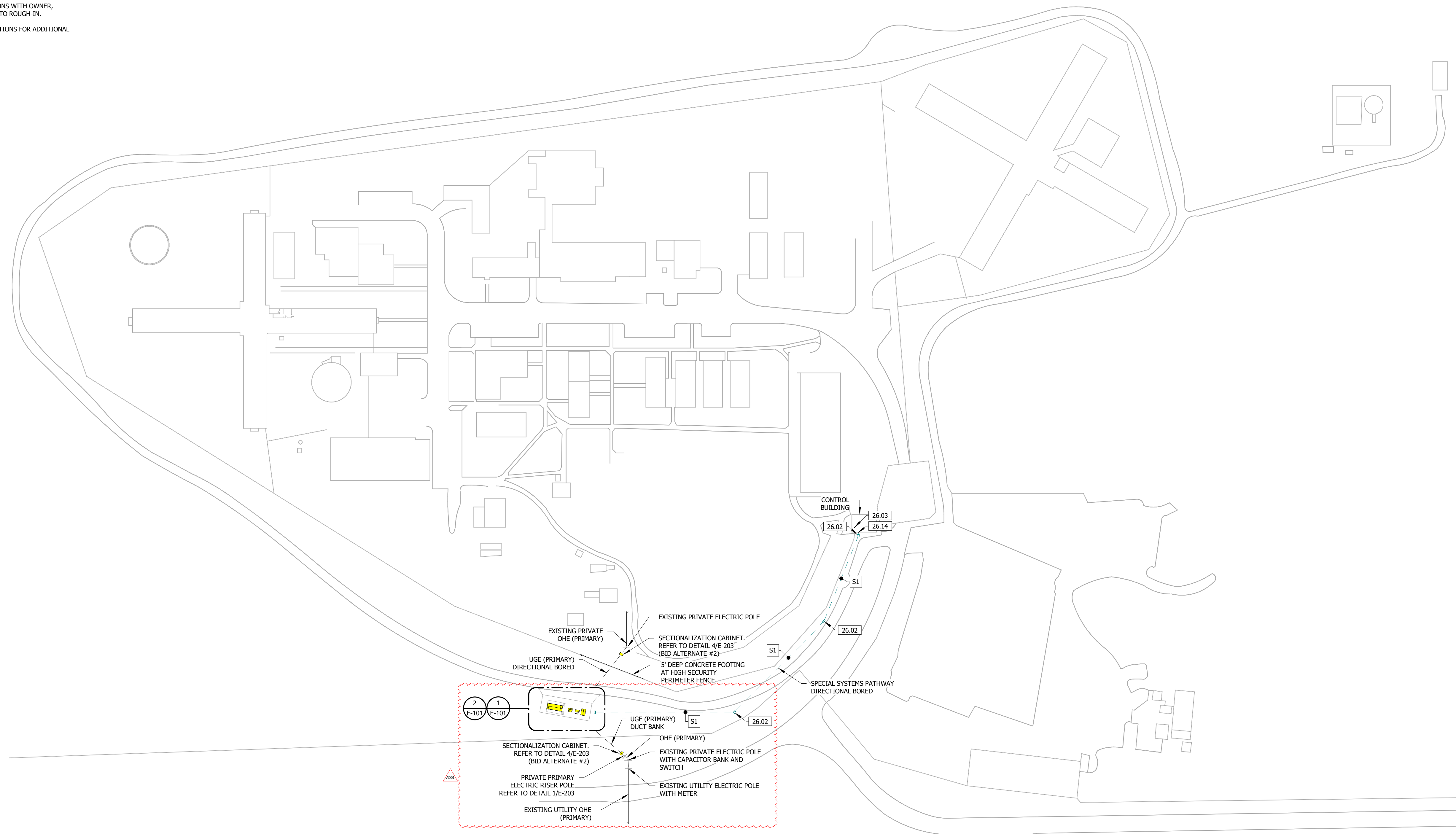
1. ALL ELECTRICAL WORK SHALL BE PERFORMED BY LICENSED ELECTRICAL CONTRACTOR AND SHALL BE IN ACCORDANCE WITH REQUIREMENTS OF THE 2017 NATIONAL ELECTRICAL CODE AND ALL APPLICABLE LOCAL CODES AS ADOPTED BY THE AUTHORITY HAVING JURISDICTION.
2. ALL PERMIT AND INSPECTION FEES SHALL BE INCLUDED IN BID.
3. THE CONTRACTOR SHALL VERIFY ALL EXISTING CONDITIONS PRIOR TO SUBMITTING THEIR BID. NO EXTRAS WILL BE PAID DUE TO UNANTICIPATED EXISTING CONDITIONS.
4. THE PLANS ARE DIAGRAMMATIC AND SHALL NOT BE SCALED. REFER TO ARCHITECTURAL DRAWINGS AND EXISTING CONDITIONS FOR DIMENSIONS.
5. CONDUIT/CONDUCTOR LAYOUTS ARE DIAGRAMMATIC. FIELD COORDINATE EXACT LOCATIONS AND ROUTINGS WITH STRUCTURE, PIPING, LIGHT FIXTURES, CONDUITS, ETC.
6. COOPERATE CLOSELY WITH ALL OTHER TRADES TO EXPEDITE CONSTRUCTION AND AVOID INTERFERENCES AND CONFLICTS. BEFORE ANY PIPING, DUCTWORK, CONDUIT, ETC. IS INSTALLED, IT SHALL BE COORDINATED CAREFULLY BETWEEN ALL TRADES.
7. MAINTAIN ALL CLEARANCES REQUIRED BY ELECTRICAL EQUIPMENT. COORDINATE WITH MECHANICAL AND PLUMBING CONTRACTOR TO MAINTAIN ALL CLEARANCES REQUIRED FOR EQUIPMENT. DO NOT ROUTE PIPING, DUCTWORK, ETC. ABOVE ELECTRICAL PANELS.
8. THE CONTRACTOR SHALL GUARANTEE ALL EQUIPMENT, ACCESSORIES, AND MATERIAL FURNISHED BY THEM FOR A PERIOD OF ONE YEAR FROM FINAL ACCEPTANCE AGAINST ALL DEFECTS.
9. COORDINATE LIGHT FIXTURE LOCATIONS WITH OWNER, STRUCTURE, AND OTHER TRADES PRIOR TO ROUGH-IN.
10. REFER TO SPECIFICATION SHEET SECTIONS FOR ADDITIONAL REQUIREMENTS.

SPECIAL SYSTEM PATHWAYS

KEY VALUE	SIZE AND QUANTITY
S1	(1) 2" CONDUIT WITH PULL STRING.

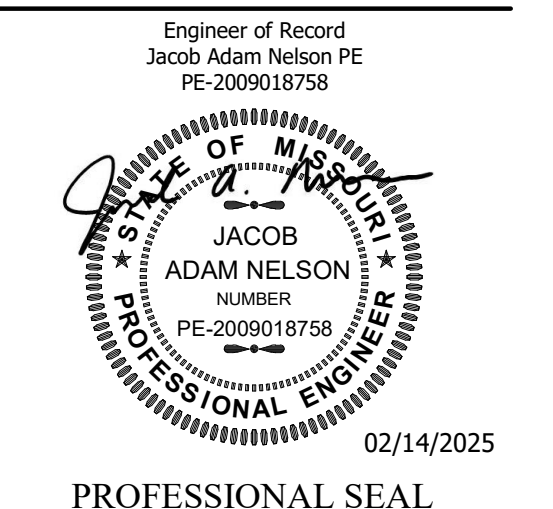
KEYNOTE LEGEND

KEY VALUE	KEYNOTE TEXT
26.02	TERMINATE SPECIAL SYSTEMS PATHWAY IN POLYMER CONCRETE BOX WITH LID EQUAL TO HUBBELL QUAZITE. BOX SHALL BE 24"X18" WITH "COMMUNICATIONS" IMPRINTED ON LID.
26.03	BID ALTERNATE #1: GENERATOR REMOTE ANNUNCIATOR LOCATED IN CONTROL ROOM. FIELD VERIFY LOCATION AND CONDUIT/CABLE ROUTING.
26.14	EXTEND COMMUNICATIONS CONDUIT INTO EXISTING CONTROL BUILDING. FIELD VERIFY TERMINATION LOCATION.



1 SITE ELECTRICAL PLAN
1" = 80'-0"

STATE OF MISSOURI
MIKE KEHOE,
GOVERNOR



TRUE ENGINEERING
MECHANICAL • ELECTRICAL • PLUMBING
1200 E WOODHURST DR, STE P
SPRINGFIELD, MO 65804
417.708.7025
WWW.TRUE-MEP.COM

True Engineering Group LLC
Missouri State Certificate of Authority #E-2016000752

**OFFICE OF ADMINISTRATION
DIVISION OF FACILITIES
MANAGEMENT,
DESIGN AND CONSTRUCTION**

**DEPARTMENT OF
CORRECTIONS**

OZARK CORRECTIONAL
CENTER - INSTALL SINGLE
GENERATOR BACKUP

929 HONOR CAMP LN,
FORDLAND, MO 65652

**PROJECT # C2414-01
SITE # 7003
FACILITY # 9327003081**

REVISION:
DATE:
REVISION:
DATE:
REVISION: ADDENDUM 01
DATE: 04/16/2025
ISSUE DATE: 02/14/2025

CAD DWG FILE: C2414-01
DRAWN BY: AM
CHECKED BY: AH
DESIGNED BY: AH

SHEET TITLE:
**SITE ELECTRICAL
PLAN**

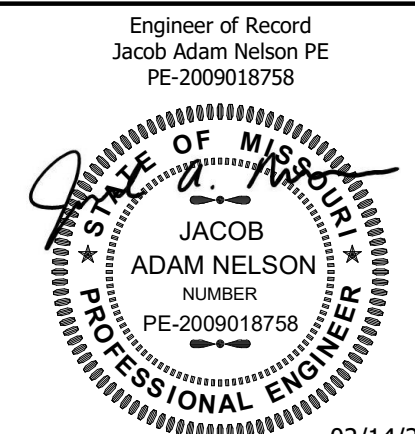
SHEET NUMBER:
E-100
06 OF 12 SHEETS
02/14/2025

FEEDER SCHEDULE

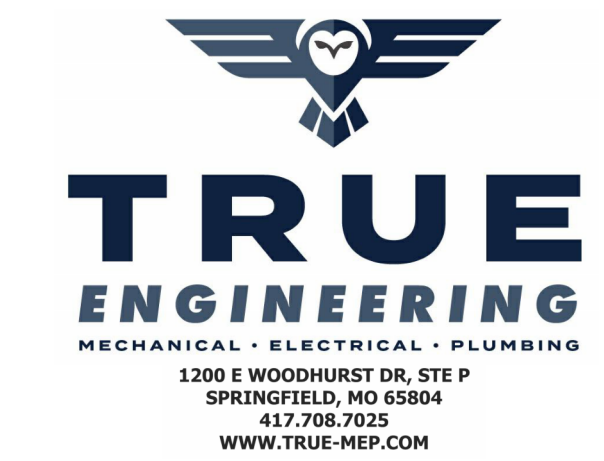
ALL CONDUCTORS SHALL BE COPPER PER SPECIFICATIONS

FEEDER MARK	PARALLEL SETS	CONDUCTORS		
		CURRENT CARRYING	GROUND	CONDUIT SIZE
60/3	1	(3) #6	(1) #8	1"
100/4	1	(4) #3	(3) #8	1.25"
1200/4	4	(4) #350	(1) #3/0	3"

STATE OF MISSOURI
MIKE KEHOE,
GOVERNOR



02/14/2025
PROFESSIONAL SEAL



True Engineering Group LLC
Missouri State Certificate of
Authority #E-2016000752

OFFICE OF ADMINISTRATION
DIVISION OF FACILITIES
MANAGEMENT,
DESIGN AND CONSTRUCTION

DEPARTMENT OF
CORRECTIONS

OZARK CORRECTIONAL
CENTER - INSTALL SINGLE
GENERATOR BACKUP

929 HONOR CAMP LN,
FORDLAND, MO 65652

PROJECT # C2414-01
SITE # 7003
FACILITY # 9327003081

REVISION:
DATE:
REVISION:
DATE:
REVISION: ADDENDUM 01
DATE: 04/16/2025
ISSUE DATE: 02/14/2025

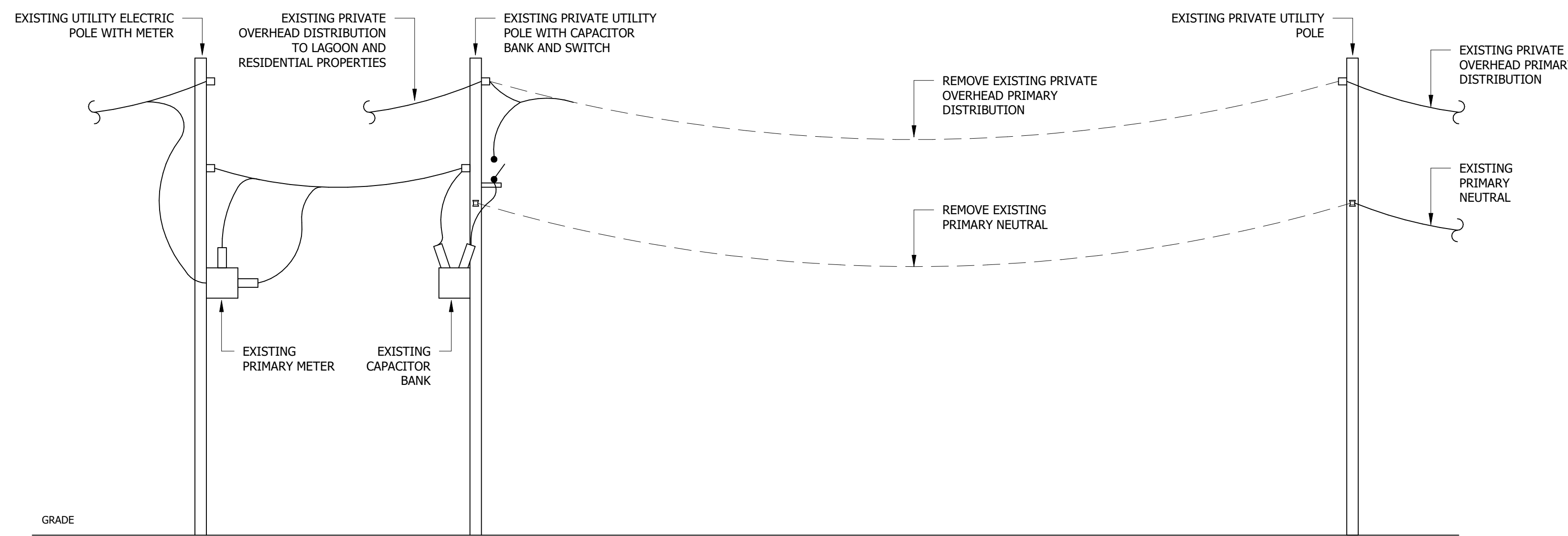
CAD DWG FILE: C2414-01
DRAWN BY: AM
CHECKED BY: AH
DESIGNED BY: AH

SHEET TITLE:
ELECTRICAL
RISERS

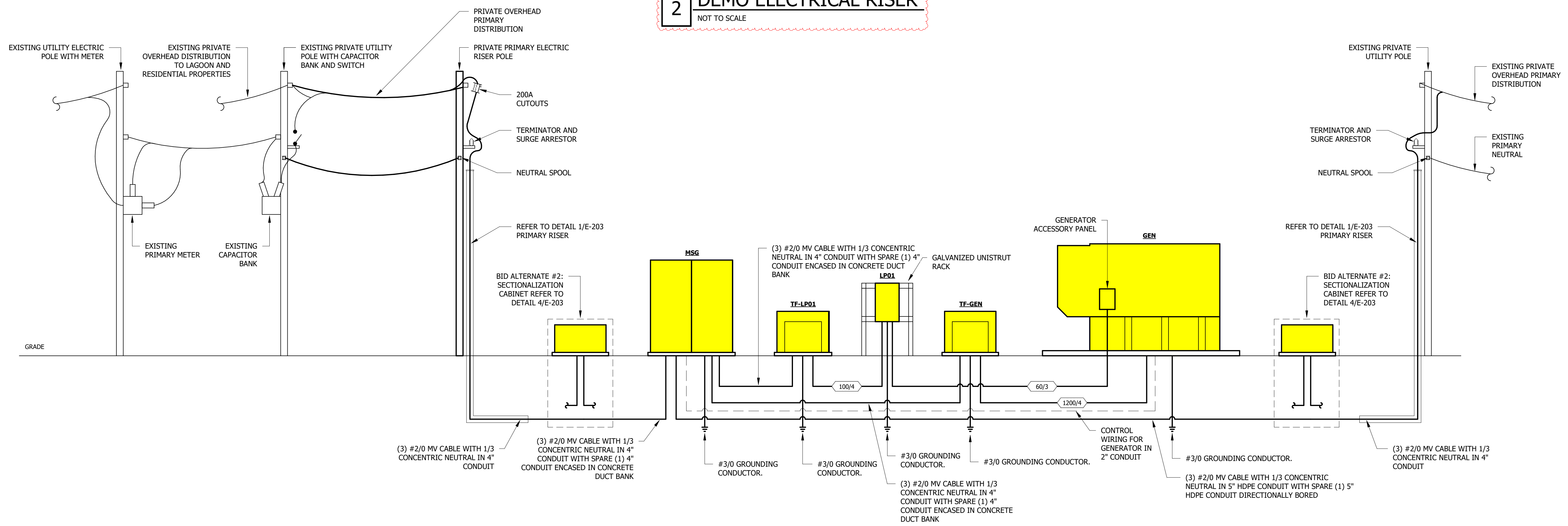
SHEET NUMBER:

E-200

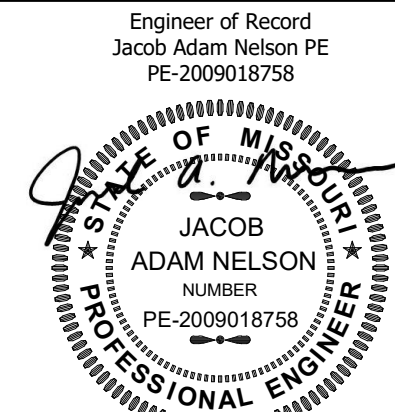
08 OF 12 SHEETS
02/14/2025



2 DEMO ELECTRICAL RISER
NOT TO SCALE

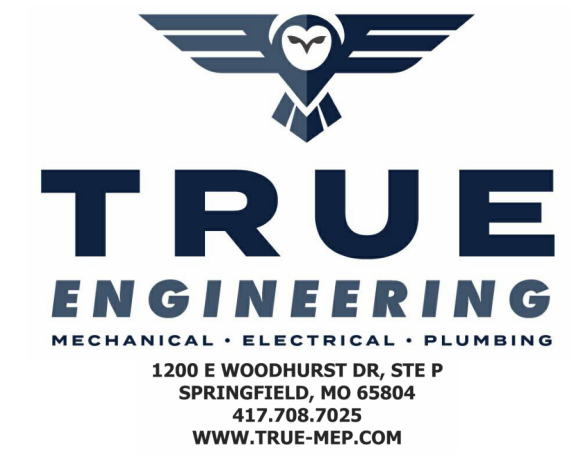


1 ELECTRICAL RISER
NOT TO SCALE



02/14/2025

PROFESSIONAL SEAL



True Engineering Group LLC

Missouri State Certificate of
 Authority #E-2016000752

OFFICE OF ADMINISTRATION
 DIVISION OF FACILITIES
 MANAGEMENT,
 DESIGN AND CONSTRUCTION

DEPARTMENT OF
 CORRECTIONS

OZARK CORRECTIONAL
 CENTER - INSTALL SINGLE
 GENERATOR BACKUP

929 HONOR CAMP LN,
 FORDLAND, MO 65652

PROJECT # C2414-01
 SITE # 7003
 FACILITY # 9327003081

REVISION:
 DATE:
 REVISION:
 DATE:
 REVISION: ADDENDUM 01
 DATE: 04/16/2025
 ISSUE DATE: 02/14/2025

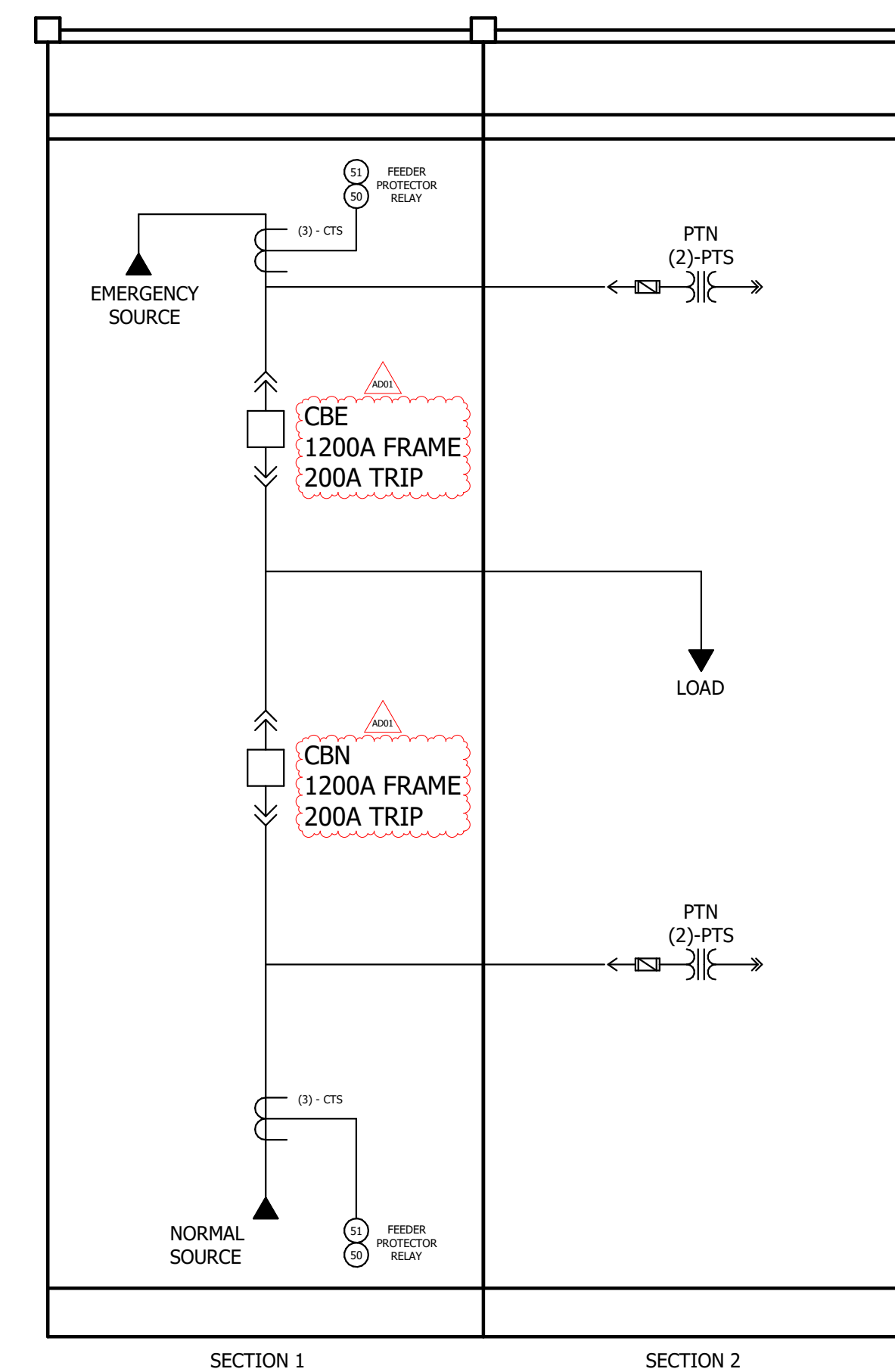
CAD DWG FILE: C2414-01
 DRAWN BY: AM
 CHECKED BY: AH
 DESIGNED BY: AH

SHEET TITLE:
 SWITCHGEAR
 DETAILS

SHEET NUMBER:

E-202

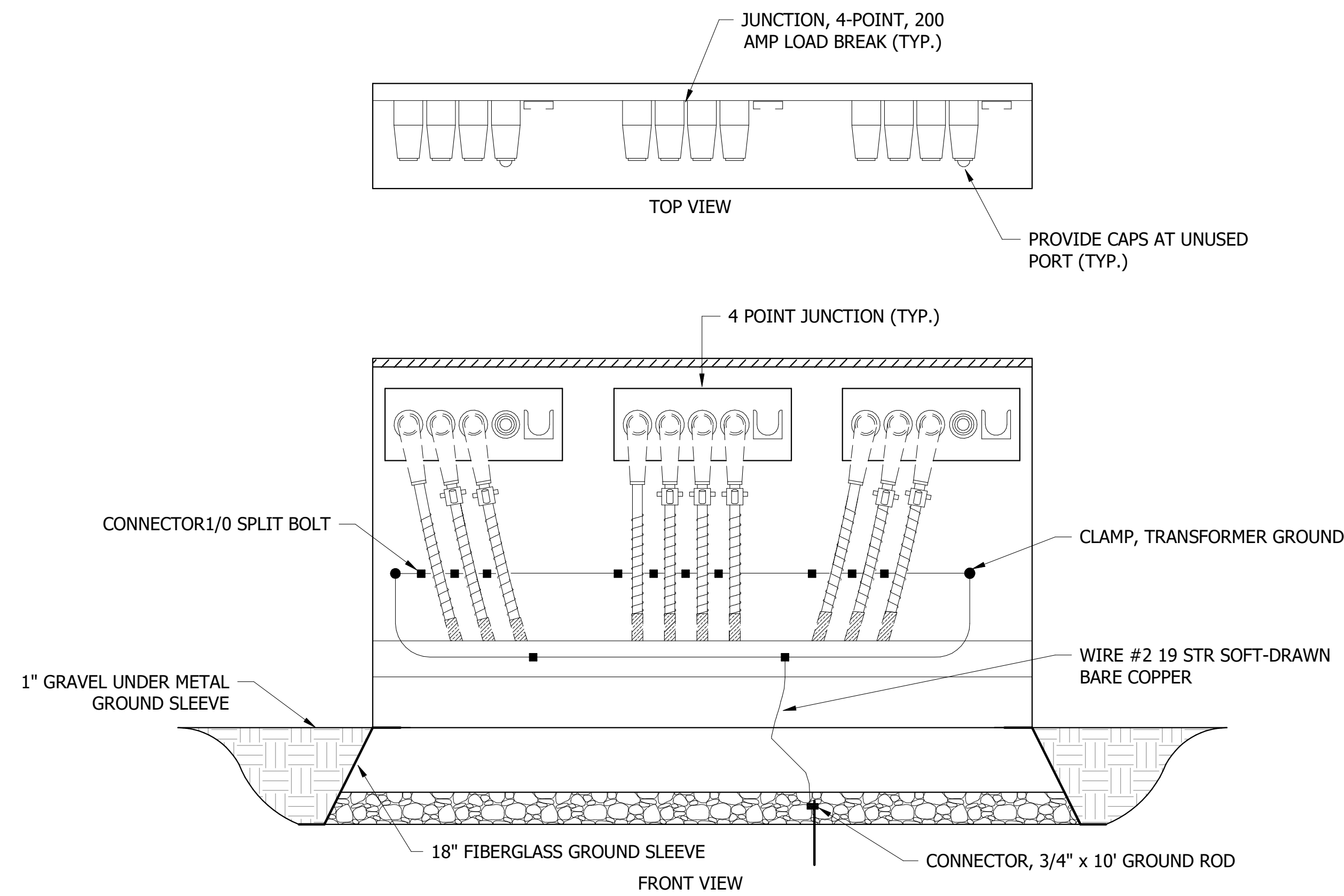
10 OF 12 SHEETS
 02/14/2025



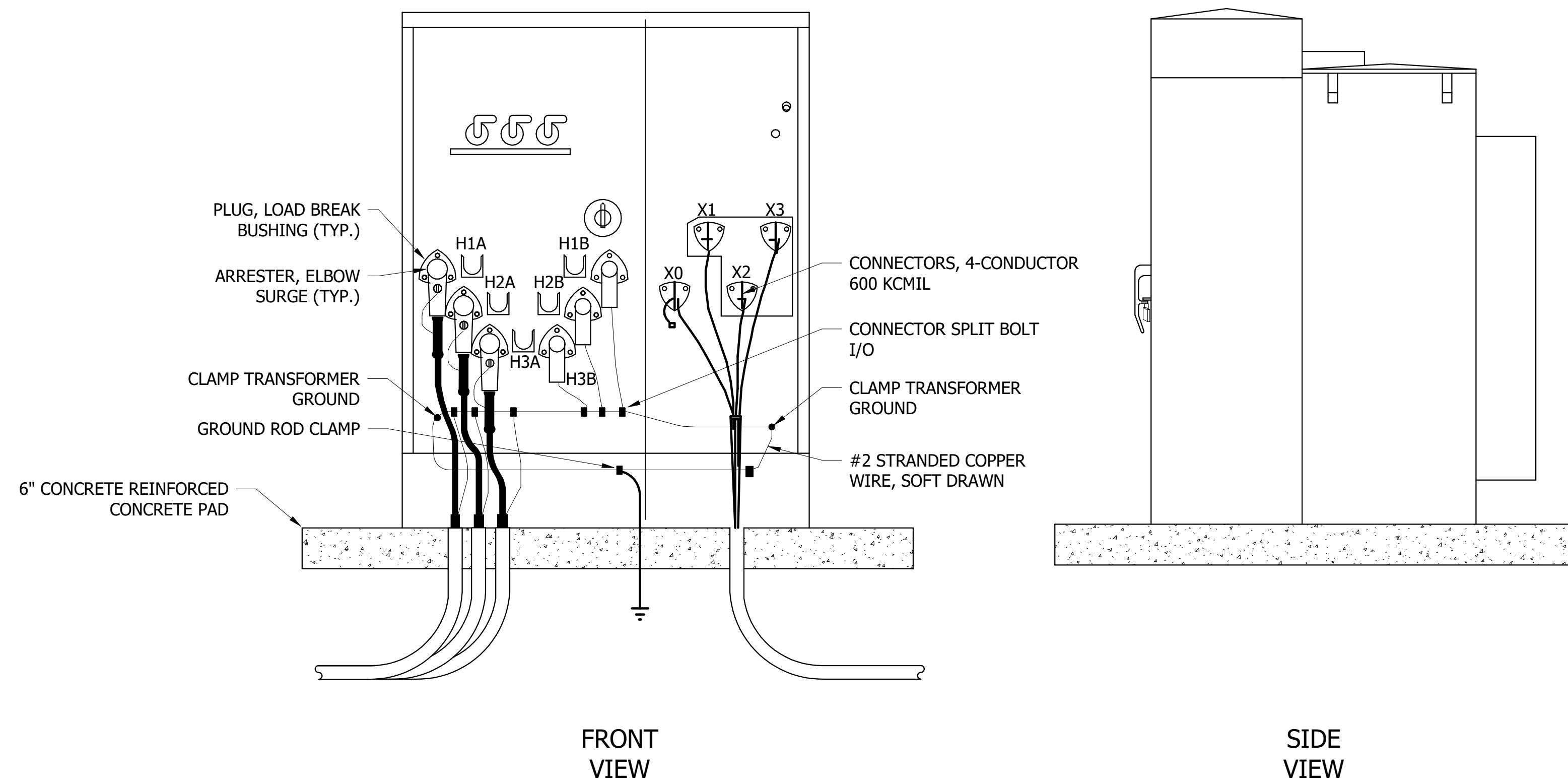
NOTES:

1. REFER TO SPECIFICATION SECTIN 26 12 36 - PARALLELING MEDIUM VOLTAGE SWITCHGEAR FOR ADDITIONAL REQUIREMENTS.
2. CIRCUIT BREAKERS SHALL BE VACUUM BREAKER TYPE WITH CAPACITOR TRIP (20 SECOND MINIMUM CHARGE).
3. LOAD TRANSFER SHALL BE AUTOMATIC MOMENTARY/FAST CLOSED TRANSITION. REFER TO SPECIFICATION SECTION 26 12 36 - PARALLELING MEDIUM VOLTAGE SWITCHGEAR FOR SEQUENCE OF OPERATION.

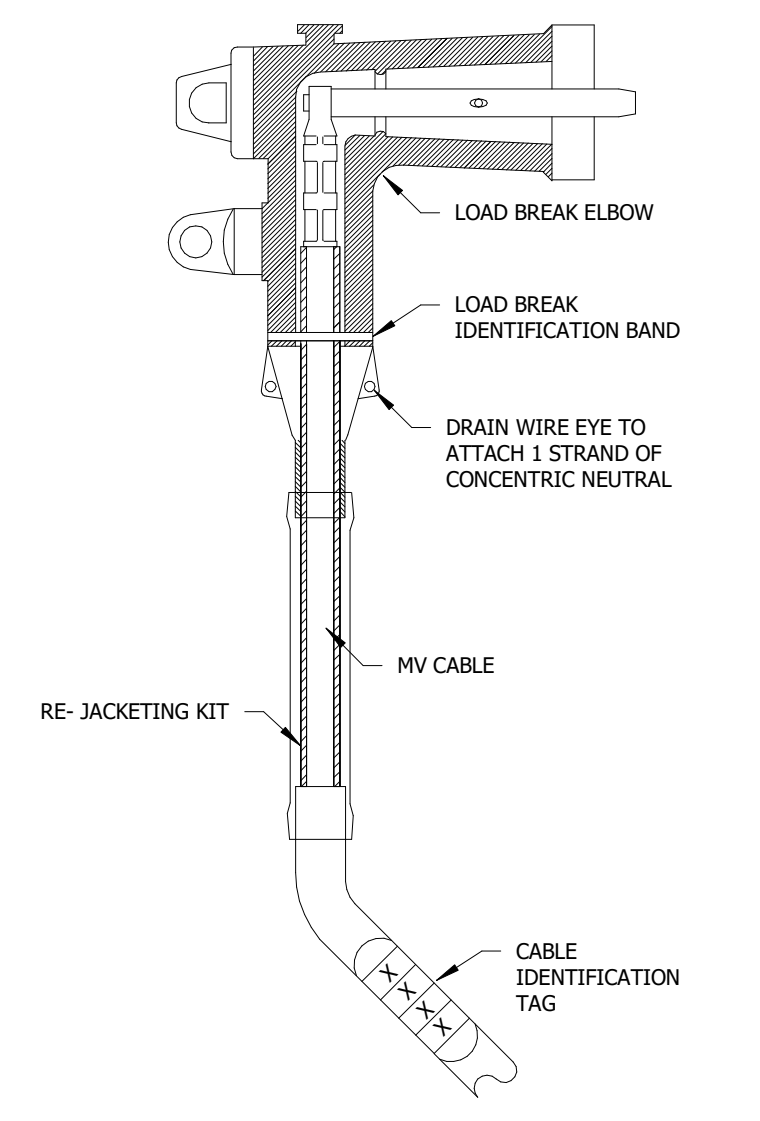
1 MAIN SWITCHGEAR "MSG" ELEVATION
 NOT TO SCALE



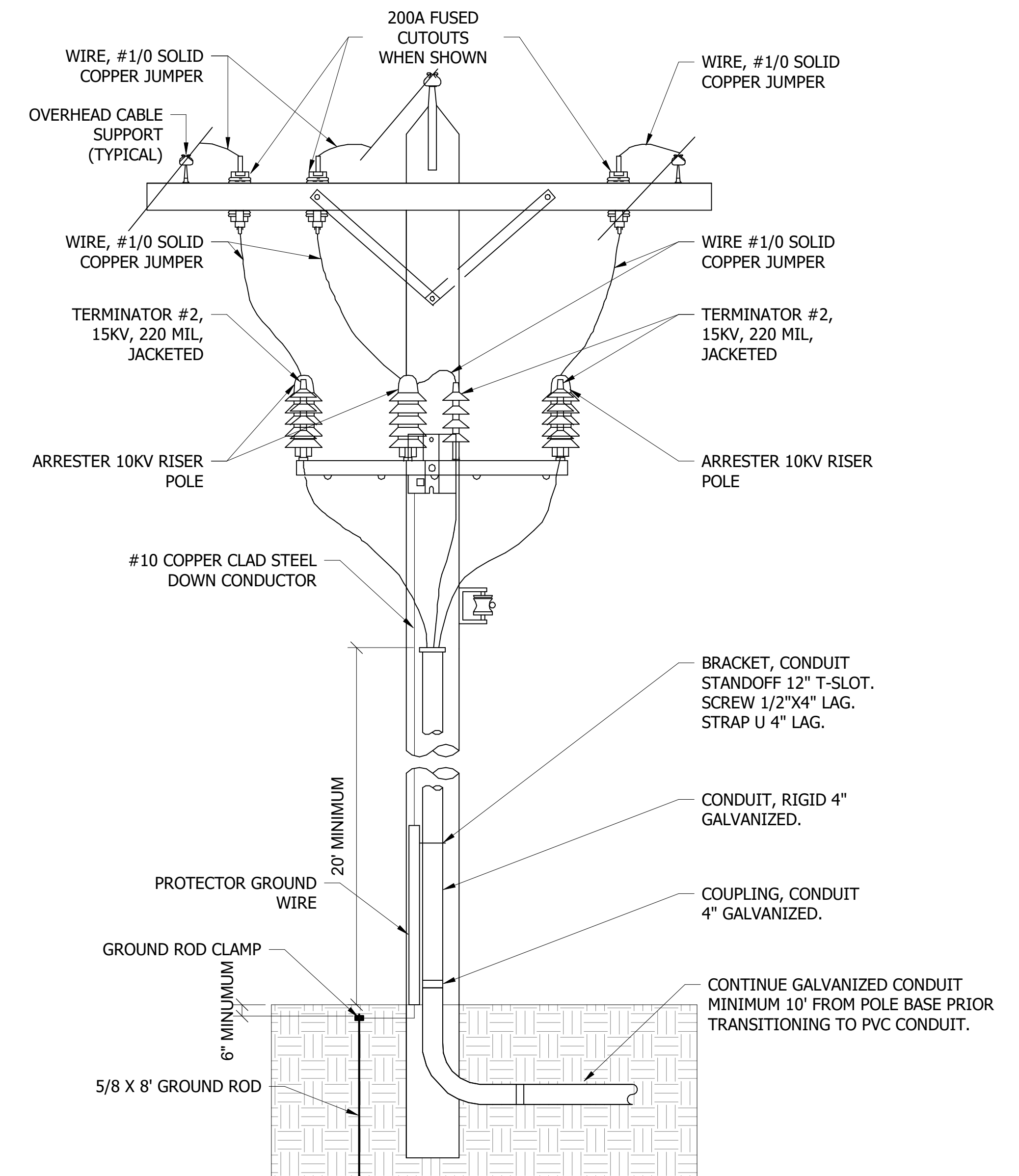
4 SECTIONALIZATION CABINET
NOT TO SCALE



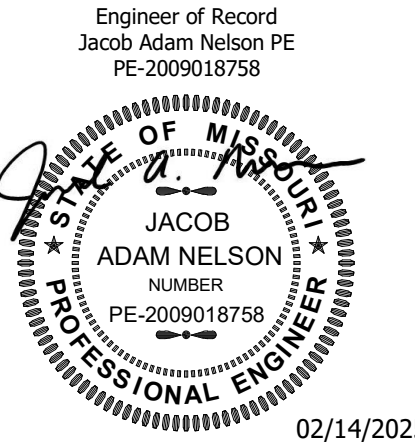
3 PAD MOUNTED TRANSFORMER
NOT TO SCALE



2 LOADBREAK ELBOW
NOT TO SCALE



1 PRIMARY RISER
NOT TO SCALE



True Engineering Group LLC
Missouri State Certificate of Authority #E-2016000752

OFFICE OF ADMINISTRATION
DIVISION OF FACILITIES
MANAGEMENT,
DESIGN AND CONSTRUCTION

DEPARTMENT OF
CORRECTIONS

OZARK CORRECTIONAL
CENTER - INSTALL SINGLE
GENERATOR BACKUP

929 HONOR CAMP LN,
FORDLAND, MO 65652

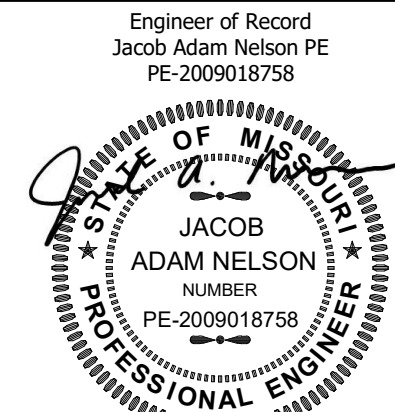
PROJECT # C2414-01
SITE # 7003
FACILITY # 9327003081

REVISION:
DATE:
REVISION:
DATE:
REVISION: ADDENDUM 01
DATE: 04/16/2025
ISSUE DATE: 02/14/2025

CAD DWG FILE: C2414-01
DRAWN BY: AM
CHECKED BY: AH
DESIGNED BY: AH

SHEET TITLE:
MV ELECTRICAL
DETAILS

SHEET NUMBER:
E-203



02/14/2025

PROFESSIONAL SEAL



True Engineering Group LLC
Missouri State Certificate of
Authority #E-2016000752

OFFICE OF ADMINISTRATION
DIVISION OF FACILITIES
MANAGEMENT,
DESIGN AND CONSTRUCTION

DEPARTMENT OF
CORRECTIONS

OZARK CORRECTIONAL
CENTER - INSTALL SINGLE
GENERATOR BACKUP

929 HONOR CAMP LN,
FORDLAND, MO 65652

PROJECT # C2414-01
SITE # 7003
FACILITY # 9327003081

REVISION:
DATE:
REVISION:
DATE:
REVISION: ADDENDUM 01
DATE: 04/16/2025
ISSUE DATE: 02/14/2025

CAD DWG FILE: C2414-01
DRAWN BY: AM
CHECKED BY: AH
DESIGNED BY: AH

SHEET TITLE:
ELECTRICAL
SCHEDULES

SHEET NUMBER:

E-300

12 OF 12 SHEETS
02/14/2025

Branch Panel: LP01												
Location: GENERATOR PAD				Volts: 120/208 Wye				A.I.C. Rating: 10 KAIC				
Supply From: MSG / TF-LP01				Phases: 3				Mains Type: 100A MCB				
Mounting: SURFACE				Wires: 4				Mains Rating: 100A				
Enclosure: NEMA 3R												
Panelboard Accessories: 1. GASKETED LOCKING DOOR, 2. EQUIPMENT GROUND BAR, 3. TIN PLATED COPPER BUS BARS, 4. SURGE PROTECTION DEVICE (SPD)												
CKT	CIRCUIT DESCRIPTION	TRIP	CB ACC	POLES	A	B	C	POLES	CB ACC	TRIP	CIRCUIT DESCRIPTION	CKT
1	Generator Load Center	60 A		2	5760 VA	279 VA		1			20 A Pole Lights	2
3	--	--	--	--	5760 VA	180 VA		1			20 A Receptacle	4
5	Switchgear Cabinet Heater	20 A		1			1000 VA	100 VA	1		20 A Utility Main Control Power	6
7	Power	20 A		1	100 VA	0 VA			1	--	20 A Spare	8
9	Spare	20 A	--	1		0 VA	--		1	--	Space	10
11	Spare	20 A	--	1			0 VA	--	1	--	Space	12
13	Space	--	--	1	--	0 VA			3	--	30 A SPD	14
15	Space	--	--	1		0 VA	--		--	--	Space	16
17	Space	--	--	1			0 VA	--	--	--	Space	18
Total Load:					6139 VA	5940 VA	1100 VA					
Total Amps:					57 A	56 A	9 A					
Legend: 1. HACR = HACR RATED, 2. HLO = HAND LOCK-OFF, 3. GFCL = GROUND FAULT CIRCUIT INTERRUPTER, 4. AFCI = ARC FAULT CIRCUIT INTERRUPTER												
Load Classification	Connected Load	Demand Factor	Estimated Demand	Panel Totals								
Lighting	279 VA	100.00%	279 VA	Total Conn. Load: 13179 VA								
Power	12720 VA	100.00%	12720 VA	Total Est. Demand: 13179 VA								
Receptacle	180 VA	100.00%	180 VA	Total Conn.: 37 A								
				Total Est. Demand: 37 A								
Notes:												

PHOTOCELL SCHEDULE								
NOTES:								
1. INTEGRATE PHOTOCELL WITH BUILDING AUTOMATION SYSTEM. COORDINATE WITH BAS CONTRACTOR.								
2. INTEGRATE PHOTOCELL WITH TIME SWITCH. REFER TO TIME SWITCH SCHEDULE.								
TYPE MARK	MANUFACTURER	MODEL NUMBER	EQUIPMENT SERVED	WATTAGE	VOLTAGE	MOUNTING	NOTES	EQUIVALENTS
PC01	INTERMATIC	EK42365	EXTERIOR LIGHTING	-	120	SWIVEL	-	TORK

LIGHTING FIXTURE SCHEDULE										
NOTES:										
1. FIXTURE SHALL BE RATED FOR OUTDOOR USE.										
2. PROVIDE 20" SQUARE POLE.										
TYPE MARK	MANUFACTURER	MODEL NUMBER	DRIVER	FINISH	VOLTAGE	LAMP TYPE	COLOR TEMP	TOTAL WATTAGE	NOTES	EQUIVALENTS
PL01	COOPER MCGED	GALN-SA3A-740-U-T4W-AP-DIM	DIM	GREY	240	LED	4000	93	1,2	LITHONIA

TRANSFORMER SCHEDULE											
NOTES:											
1. BAYONET FUSING WITH 3 SPARE FUSES.											
2. 4-HOLE SPADE SECONDARY BUSHINGS.											
3. DRAIN VALVE WITH SAMPLER, PRESSURE RELIEF VALVE.											
4. ALUMINUM PRIMARY & SECONDARY WINDINGS											
5. INSTALL ON REINFORCED CONCRETE PAD.											
6. WEATHER PROOF ENCLOSURE.											
7. MEDIUM VOLTAGE DEADFRONT ACCESS.											
TYPE MARK	MANUFACTURER	KVA RATING	PHASE	MOUNTING	TEMP RISE	PRIMARY VOLTAGE	PRIMARY CONNECTION	SECONDARY VOLTAGE	SECONDARY CONNECTION	NOTES	EQUIVALENTS
TF-GEN	EATON	1000	3	PAD	65 C	480 V	DELTA	12470 V	WYE	1,2,3,4,5,6,7	SQUARE D, ABB, ERMCO
TF-LP01	EATON	45	3	PAD	65 C	12470 V	DELTA	208 V	WYE	1,2,3,5,6,7	SQUARE D, ABB, ERMCO

GENERATOR SCHEDULE										
NOTES:										
1. SUB BASE FUEL TANK SIZED FOR MINIMUM 72 HOUR RUN TIME.										
2. ENGINE BLOCK HEATER.										
3. BATTERY CHARGER.										
4. REMOTE ANNUNCIATOR (BID ALTERNATE #1).										
5. INTEGRATE GENERATOR WITH BUILDING AUTOMATION SYSTEM AND PROVIDE COMMUNICATIONS ACCESSORY. COORDINATE WITH BAS CONTRACTOR.										
6. WORKING PLATFORM WITH STAIRS.										
7. INTEGRAL GENERATOR ACCESSORY LOAD CENTER.										
TYPE MARK	MANUFACTURER	MODEL NUMBER	POWER RATING (KW/KVA)	ALTERNATOR			FUEL TYPE	NOTES	EQUIVALENTS	
GEN	CUMMINS	750DQCB	750 KW / 938 KVA	MODEL NUMBER	VOLTAGE	AMPS	DIESEL	1,2,3,4,5,6,7	CAT, MTU	
				S6L1D-04	480	1200				