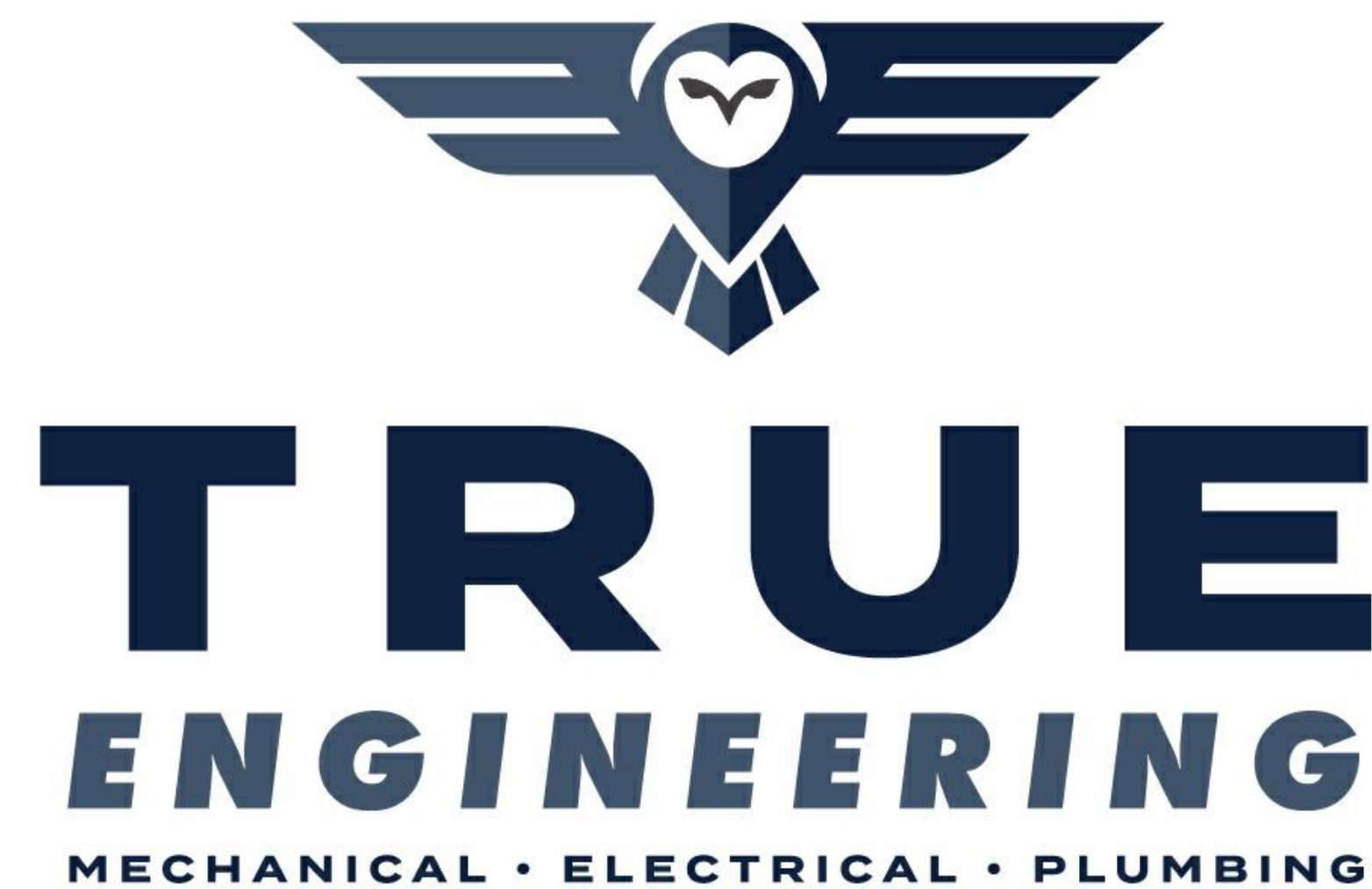


GENTRY RESIDENTIAL TREATMENT CENTER REPLACE HVAC CABOOL, MISSOURI



OWNER: STATE OF MISSOURI
MIKE KEHOE,
GOVERNOR

DEPARTMENT OF
SOCIAL SERVICES
DIVISION OF YOUTH SERVICES

PROJECT
MANAGEMENT: OFFICE OF ADMINISTRATION
DIVISION OF FACILITIES MANAGEMENT,
DESIGN AND CONSTRUCTION

1200 E WOODHURST DR, STE P
SPRINGFIELD, MO 65804
417.708.7025
WWW.TRUE-MEP.COM

DESIGNER: TRUE ENGINEERING GROUP, LLC

PROJECT NUMBER: H2409-01

SITE NUMBER: 7712
FACILITY NUMBER: 8877712003

SHEET NUMBER:

G-001

1 OF 12 SHEETS
07/17/2025

GAS LOAD TABLE:

NEW GAS LOAD FOR EXISTING BUILDING

1. EXISTING GAS LOADS REMOVED.

- A. FURNACE F01 = 120 MBH
B. FURNACE F02 = 160 MBH
C. FURNACE F03 = 160 MBH
D. FURNACE F04 = 120 MBH
E. FURNACE F05 = 120 MBH
F. FURNACE F06 = 120 MBH

TOTAL = 800 MBH

2. NEW GAS LOAD TOTALS.

- A. FURNACE F02 = 70 MBH
B. FURNACE F03 = 84 MBH
C. FURNACE F04 = 84 MBH
D. FURNACE F05 = 70 MBH
E. DOA01 = 140 MBH
F. DOA02 = 140 MBH
G. DOA03 = 140 MBH

TOTAL = 728 MBH

3. DECREASE IN GAS LOAD.

- A. GAS LOADS REMOVED = 800 MBH
B. GAS LOADS ADDED = 728 MBH

DECREASE IN GAS LOAD = 72 MBH

DIVISION 26 POWER LEGEND

- JUNCTION BOX
DUPLEX, 20-AMP RECEPTACLE
DUPLEX WITH GROUND FAULT CIRCUIT INTERRUPTER, 20-AMP RECEPTACLE
DUPLEX WITH WEATHERPROOF ENCLOSURE, 20-AMP RECEPTACLE
SIMPLEX, 20-AMP RECEPTACLE
SIMPLEX WITH NEMA CONFIGURATION AS INDICATED
DOUBLE DUPLEX, 20-AMP RECEPTACLE
LIGHTING AND POWER PANELBOARD
DISTRIBUTION POWER PANELBOARD

DIVISION 23 HVAC LEGEND

- MITER ELBOW
FURNACE
CONDENSING UNIT
FLEX DUCT
RECTANGULAR TO ROUND TAKE-OFF WITH DAMPER
SUPPLY DIFFUSER
RETURN GRILLE
MANUAL BALANCING DAMPER
FIRE/SMOKE DAMPER
CONTROL DAMPER WITH ACTUATOR
EXHAUST FAN
THERMOSTAT
HVAC EQUIPMENT HATCHING. INDICATES NEW EQUIPMENT TO BE PROVIDED AND INSTALLED. REFER TO MECHANICAL SCHEDULE(S).
SUPPLY ELBOW UP
SUPPLY ELBOW DOWN
RETURN ELBOW UP
RETURN ELBOW DOWN

DIV 22 PLUMBING LEGEND

- VENT PIPING
NATURAL GAS PIPING
CONDENSATE DRAIN PIPING
FIRE SPRINKLER PIPING
MANUAL SHUT-OFF VALVE
REDUCER
PRESSURE REDUCING VALVE
FINISH FLOOR OR FINISH GRADE CLEANOUT
FLOOR DRAIN
PLUMBING FIXTURE HATCHING. INDICATES NEW PLUMBING FIXTURE TO BE PROVIDED AND INSTALLED. REFER TO PLUMBING FIXTURE SCHEDULE

PERMITTING NOTE:

CONTRACTOR SHALL BE RESPONSIBLE FOR OBTAINING ALL INSTALLATION PERMITS REQUIRED FOR THE PROJECT.

TEMPORARY HVAC NOTE:

PORTABLE AIR CONDITIONING AND HEATING UNITS SHALL BE INSTALLED AND OPERABLE FOR DORMITORY UNITS 116, 116A, 116B, 116C, 123, 123A, 123B AND 123C. REFER TO SPECIFICATIONS FOR FURTHER REQUIREMENTS AND CLARIFICATIONS.

MEP BID ALTERNATE

ALTERNATE NO. 1:

EXISTING FIRE/SMOKE DAMPERS; ADD.

1. REMOVE AND REPLACE ALL EXISTING FIRE/SMOKE DAMPERS AND ASSOCIATED ELECTRICAL CONNECTIONS AS INDICATED ON THE DRAWINGS LABELED "ALTERNATE NO. 1." SPECIFICATION SECTION 23.33.00 INCLUDES COMPLETE PRODUCT AND EXECUTION REQUIREMENTS FOR NEW FIRE/SMOKE DAMPERS.

SHEET INDEX

G-001	TITLE SHEET
G-101	GENERAL SCOPE PLAN
MEP-101	MEP COORDINATION PLAN
M-001	DEMO MECHANICAL PLAN
M-101	MECHANICAL PLAN
M-102	MECHANICAL PIPING PLAN
M-201	BUILDING AUTOMATION CONTROL DRAWINGS
M-202	MECHANICAL DETAILS
M-301	MECHANICAL SCHEDULES
E-001	DEMO ELECTRICAL PLAN
E-101	ELECTRICAL PLAN
E-201	ELECTRICAL DETAILS AND SCHEDULES

DIVISION 26 SPECIFICATIONS:

26 05 00 - COMMON WORK FOR ELECTRICAL

1. ALL ELECTRICAL WORK SHALL BE PERFORMED BY LICENSED ELECTRICAL CONTRACTOR AND SHALL BE IN ACCORDANCE WITH REQUIREMENTS OF THE 2023 NATIONAL ELECTRICAL CODE AND ALL APPLICABLE LOCAL CODES AS ADOPTED BY THE AUTHORITY HAVING JURISDICTION.
2. ALL PERMIT AND INSPECTION FEES SHALL BE INCLUDED IN BID.
3. THE CONTRACTOR SHALL VERIFY ALL EXISTING CONDITIONS PRIOR TO SUBMITTING THEIR BID. NO EXTRAS WILL BE PAID DUE TO UNANTICIPATED EXISTING CONDITIONS.
4. THE PLANS ARE DIAGRAMMATIC AND SHALL NOT BE SCALED.
5. CONDUIT/CONDUCTOR LAYOUTS ARE DIAGRAMMATIC. FIELD COORDINATE EXACT LOCATIONS AND ROUTINGS WITH STRUCTURE, PIPING, LIGHT FIXTURES, CONDUITS, ETC.
6. COOPERATE CLOSELY WITH ALL OTHER TRADES TO EXPEDITE CONSTRUCTION AND AVOID INTERFERENCES AND CONFLICTS. BEFORE ANY PIPING, DUCTWORK, CONDUIT, ETC. IS INSTALLED, IT SHALL BE COORDINATED CAREFULLY BETWEEN ALL TRADES.
7. MAINTAIN ALL CLEARANCES REQUIRED BY ELECTRICAL EQUIPMENT. COORDINATE WITH MECHANICAL AND PLUMBING CONTRACTOR TO MAINTAIN ALL CLEARANCES REQUIRED FOR EQUIPMENT. DO NOT ROUTE PIPING, DUCTWORK, ETC. ABOVE ELECTRICAL PANELS.
8. THE CONTRACTOR SHALL GUARANTEE ALL EQUIPMENT, ACCESSORIES, AND MATERIAL FURNISHED BY THEM FOR A PERIOD OF ONE YEAR FROM FINAL ACCEPTANCE AGAINST ALL DEFECTS.
9. REFER TO SPECIFICATION SHEET SECTIONS FOR ADDITIONAL REQUIREMENTS.

DIVISION 23 SPECIFICATIONS:

23 05 00 - COMMON WORK FOR HEATING, VENTILATION, AND AIR CONDITIONING

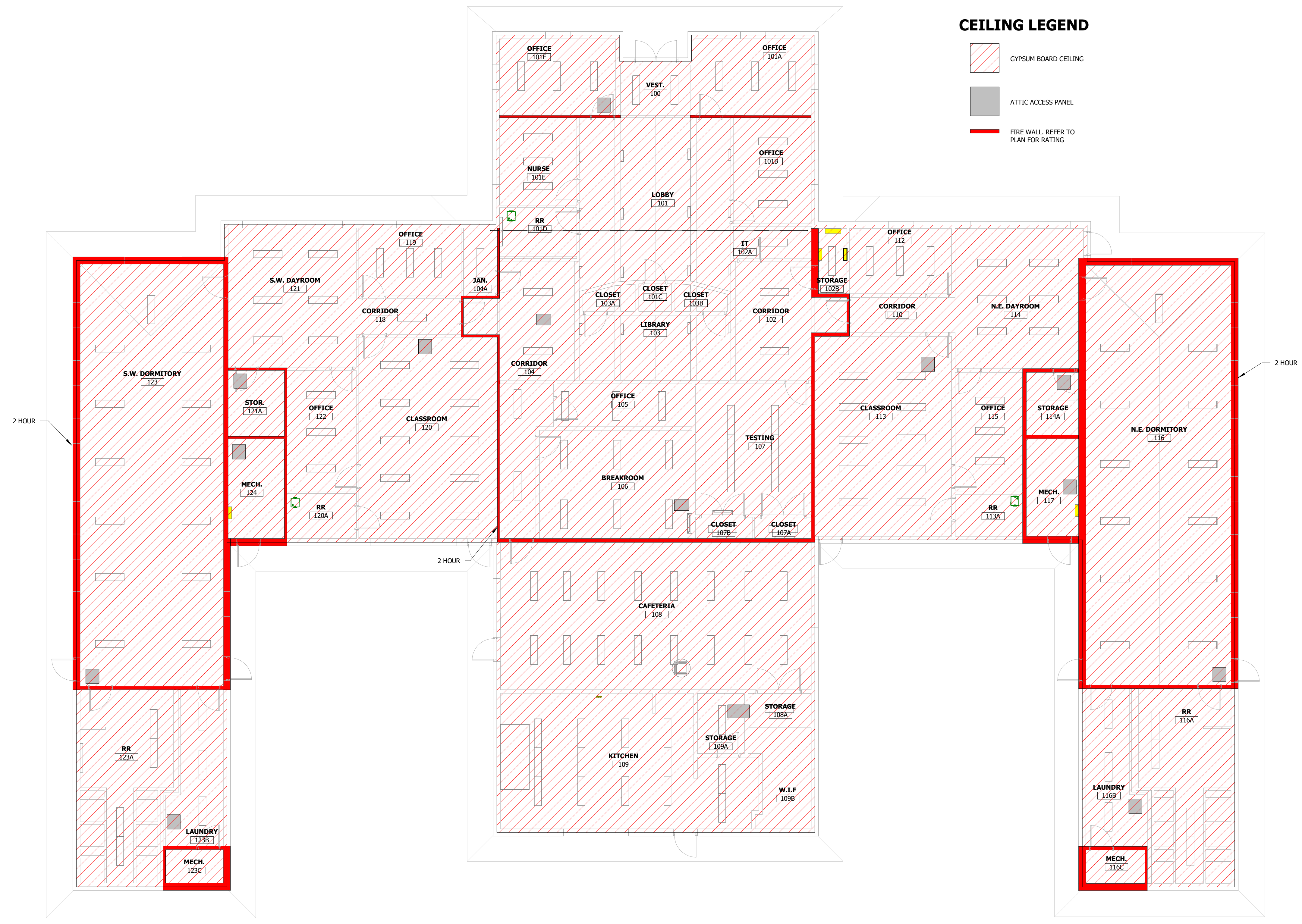
1. ALL MECHANICAL WORK SHALL BE PERFORMED BY LICENSED MECHANICAL CONTRACTOR AND SHALL BE IN ACCORDANCE WITH REQUIREMENTS OF THE 2024 INTERNATIONAL MECHANICAL CODE AND ALL APPLICABLE LOCAL CODES AS ADOPTED BY THE AUTHORITY HAVING JURISDICTION.
2. ALL PERMIT AND INSPECTION FEES SHALL BE INCLUDED IN BID.
3. THE CONTRACTOR SHALL VERIFY ALL EXISTING CONDITIONS PRIOR TO SUBMITTING THEIR BID. NO EXTRAS WILL BE PAID DUE TO UNANTICIPATED EXISTING CONDITIONS.
4. THE PLANS ARE DIAGRAMMATIC AND SHALL NOT BE SCALED.
5. DUCTWORK LAYOUTS ARE DIAGRAMMATIC. FIELD COORDINATE EXACT LOCATIONS AND ROUTINGS WITH STRUCTURE, PIPING, LIGHT FIXTURES, CONDUITS, ETC.
6. COOPERATE CLOSELY WITH ALL OTHER TRADES TO EXPEDITE CONSTRUCTION AND AVOID INTERFERENCES AND CONFLICTS. BEFORE ANY PIPING, DUCTWORK, CONDUIT, ETC. IS INSTALLED, IT SHALL BE COORDINATED CAREFULLY BETWEEN ALL TRADES.
7. MAINTAIN ALL CLEARANCES REQUIRED BY MECHANICAL EQUIPMENT. COORDINATE WITH ELECTRICAL AND PLUMBING CONTRACTOR TO MAINTAIN ALL CLEARANCES REQUIRED FOR EQUIPMENT. DO NOT ROUTE PIPING, DUCTWORK, ETC. ABOVE ELECTRICAL PANELS.
8. THE CONTRACTOR SHALL GUARANTEE ALL EQUIPMENT, ACCESSORIES, AND MATERIAL FURNISHED BY THEM FOR A PERIOD OF ONE YEAR FROM FINAL ACCEPTANCE AGAINST ALL DEFECTS.
9. REFER TO SPECIFICATION SECTIONS FOR ADDITIONAL REQUIREMENTS.

DIVISION 22 SPECIFICATIONS:

22 05 00 - COMMON WORK FOR PLUMBING

1. ALL PLUMBING WORK SHALL BE PERFORMED BY LICENSED PLUMBING CONTRACTORS AND SHALL BE IN ACCORDANCE WITH REQUIREMENTS OF THE 2024 INTERNATIONAL PLUMBING CODE AND THE 2024 INTERNATIONAL FUEL GAS CODE AND ALL APPLICABLE LOCAL CODES AS ADOPTED BY THE AUTHORITY HAVING JURISDICTION.
2. ALL PERMIT AND INSPECTION FEES SHALL BE INCLUDED IN BID.
3. THE CONTRACTOR SHALL VERIFY ALL EXISTING CONDITIONS PRIOR TO SUBMITTING THEIR BID. NO EXTRAS WILL BE PAID DUE TO UNANTICIPATED EXISTING CONDITIONS.
4. THE PLANS ARE DIAGRAMMATIC AND SHALL NOT BE SCALED.
5. PIPING LAYOUTS ARE DIAGRAMMATIC. FIELD COORDINATE EXACT LOCATIONS AND ROUTINGS WITH STRUCTURE, DUCTWORK, LIGHT FIXTURES, CONDUITS, ETC.
6. COOPERATE CLOSELY WITH ALL OTHER TRADES TO EXPEDITE CONSTRUCTION AND AVOID INTERFERENCES AND CONFLICTS. BEFORE ANY PIPING, DUCTWORK, CONDUIT, ETC. IS INSTALLED, IT SHALL BE COORDINATED CAREFULLY BETWEEN ALL TRADES.
7. MAINTAIN ALL CLEARANCES REQUIRED BY PLUMBING EQUIPMENT. COORDINATE WITH ELECTRICAL AND HVAC CONTRACTOR TO MAINTAIN ALL CLEARANCES REQUIRED FOR EQUIPMENT. DO NOT ROUTE PIPING, DUCTWORK, ETC. ABOVE ELECTRICAL PANELS.
8. THE CONTRACTOR SHALL GUARANTEE ALL EQUIPMENT, ACCESSORIES, AND MATERIALS FURNISHED BY THEM FOR A PERIOD OF ONE YEAR FROM FINAL ACCEPTANCE AGAINST ALL DEFECTS.
9. REFER TO SPECIFICATION SECTIONS FOR ADDITIONAL REQUIREMENTS.





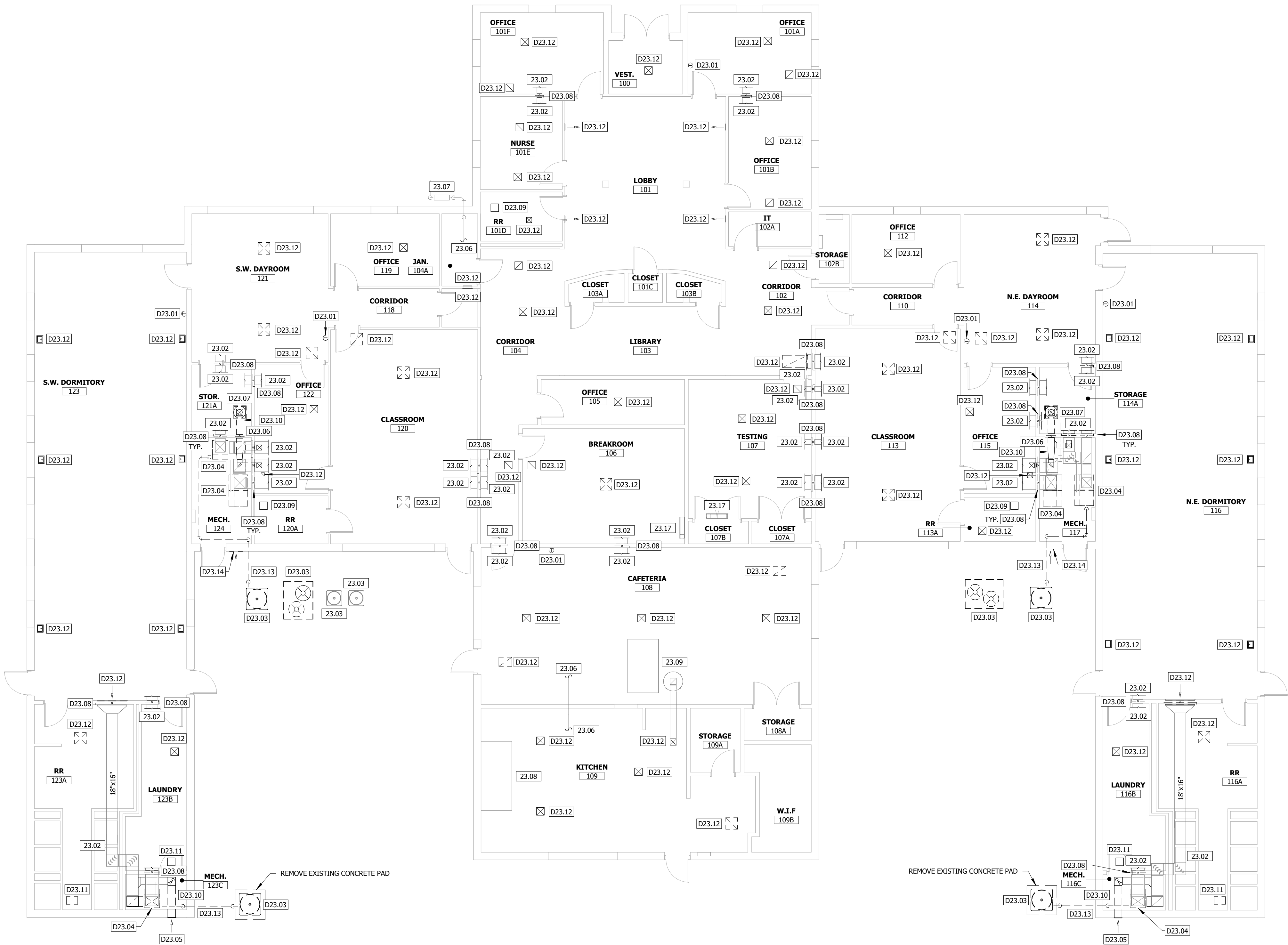
1 MEP COORDINATION PLAN
1/8" = 1'-0"

MECHANICAL DEMO NOTES:

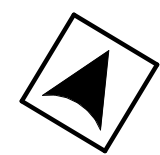
1. THE OWNER SHALL HAVE FIRST RIGHT OF REFUSAL ON ALL DEMOLISHED ITEMS.
2. THE CONTRACTOR SHALL FIELD VISIT THE SITE TO CONFIRM EXISTING CONDITIONS.
3. REMOVE SUPPORTS, ETC. ASSOCIATED WITH DEMOLISHED ITEMS.
4. CONTRACTOR SHALL REPAIR ALL HOLES CREATED BY REMOVAL OF EXISTING MECHANICAL EQUIPMENT, DUCTWORK, AND PIPING.

KEYNOTE LEGEND

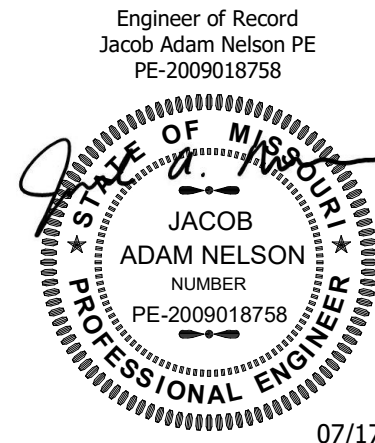
KEY VALUE	KEYNOTE TEXT
23.02	EXISTING DUCTWORK SHALL REMAIN.
23.03	EXISTING CONDENSING UNIT AND ASSOCIATED REFRIGERANT PIPING SHALL REMAIN.
23.06	EXISTING GAS PIPING LOCATED IN ATTIC SPACE SHALL REMAIN.
23.07	EXISTING GAS METER LOCATION.
23.08	EXISTING KITCHEN HOOD AND ASSOCIATED DUCTWORK SHALL REMAIN.
23.09	EXISTING MAKEUP AIR UNIT LOCATED IN ATTIC AND ASSOCIATED DUCTWORK SHALL REMAIN.
23.17	EXISTING WALL MOUNT FAN TERMINAL UNIT AND ASSOCIATED REFRIGERANT LINES OUT TO CONDENSING UNIT SHALL REMAIN.
D23.01	REMOVE EXISTING THERMOSTAT AND ASSOCIATED LOW VOLTAGE WIRING. CONTRACTOR SHALL HAVE OPTION TO REUSE EXISTING BACKBOX AND CONDUIT FOR NEW SYSTEM IF APPLICABLE.
D23.03	REMOVE EXISTING CONDENSING UNIT AND ASSOCIATED REFRIGERANT PIPING. REFER TO IMPROVEMENT PLANS FOR ADDITIONAL REQUIREMENTS.
D23.04	REMOVE EXISTING FURNACE, EVAPORATOR COIL, EXISTING DUCTWORK SHOWN DASHED, NATURAL GAS PIPING CONNECTION, ASSOCIATED REFRIGERANT PIPING, CONDENSATE PIPING, AND FLUE PIPING. REFER TO IMPROVEMENT PLANS FOR ADDITIONAL REQUIREMENTS. SEAL ANY WALL AND ROOF PENETRATIONS WEATHER TIGHT.
D23.05	REMOVE EXISTING LOUVER. PATCH AND REPAIR WALL PENETRATION INTO BUILDING TO MATCH EXISTING WALL CONSTRUCTION. REFER TO DETAIL 8/M202 FOR ADDITIONAL REQUIREMENTS.
D23.06	REMOVE EXISTING FRESH AIR DUCTWORK SHOWN DASHED. PATCH RETURN DUCTWORK AS REQUIRED.
D23.07	REMOVE EXISTING GRAVITY VENTILATOR ON ROOF. PATCH AND REPAIR ROOF PENETRATION. PROVIDE SHEET METAL CAP AND 6" BATT INSULATION ON EXISTING VENTILATOR CURB.
D23.08	ALTERNATE NO. 1: REMOVE EXISTING FIRE/SMOKE DAMPER. PREPARE DUCTWORK FOR INSTALLATION OF NEW FIRE AND SMOKE DAMPER. REFER TO IMPROVEMENT PLANS FOR ADDITIONAL REQUIREMENTS. FIELD VERIFY EXISTING SIZE AND LOCATION.
D23.09	REMOVE EXISTING EXHAUST FAN. ASSOCIATED DUCTWORK SHALL REMAIN.
D23.10	REMOVE EXISTING DUCTWORK SHOWN DASHED. REFER TO IMPROVEMENT PLANS FOR FURTHER REQUIREMENTS.
D23.11	REMOVE EXISTING EXHAUST FAN AND ASSOCIATED DUCTWORK. PATCH AND REPAIR PENETRATION THROUGH ROOF. PROVIDE SHEET METAL CAP AND 6" BATT INSULATION ON EXISTING VENTILATOR CURB.
D23.12	REMOVE EXISTING AIR DEVICE AND ASSOCIATED DUCTWORK CONNECTION. PREPARE OPENING AND DUCTWORK FOR NEW AIR DEVICE. REFER TO IMPROVEMENT PLAN FOR FURTHER REQUIREMENTS.
D23.13	REMOVE EXISTING REFRIGERANT PIPING IN UNDERGROUND PIPE SLEEVE. SEAL SLEEVE WEATHER TIGHT INSIDE BUILDING.
D23.14	REMOVE EXISTING HIGH AND LOW LOUVERS. PATCH AND REPAIR WALL PENETRATION INTO BUILDING TO MATCH EXISTING WALL CONSTRUCTION. REFER TO DETAIL 8/M202 FOR ADDITIONAL REQUIREMENTS.



1 DEMO MECHANICAL PLAN
1/8" = 1'-0"



STATE OF MISSOURI
MIKE KEHOE,
GOVERNOR



07/17/2025
PROFESSIONAL SEAL



OFFICE OF
ADMINISTRATION
DIVISION OF FACILITIES
MANAGEMENT, DESIGN
AND CONSTRUCTION
DEPARTMENT OF
SOCIAL SERVICES
DIVISION OF YOUTH
SERVICES

GENTRY RESIDENTIAL
TREATMENT CENTER
REPLACE HVAC

2001 DYS DR,
CABOOL, MO 65689-9166

PROJECT # H2409-01
SITE # 7712
FACILITY # 8877712003

REVISION:
DATE:
REVISION:
DATE:
REVISION:
DATE:
ISSUE DATE: 07/17/2025

CAD DWG FILE: H2409-01
DRAWN BY: KP
CHECKED BY: JN
DESIGNED BY: JK

SHEET TITLE:

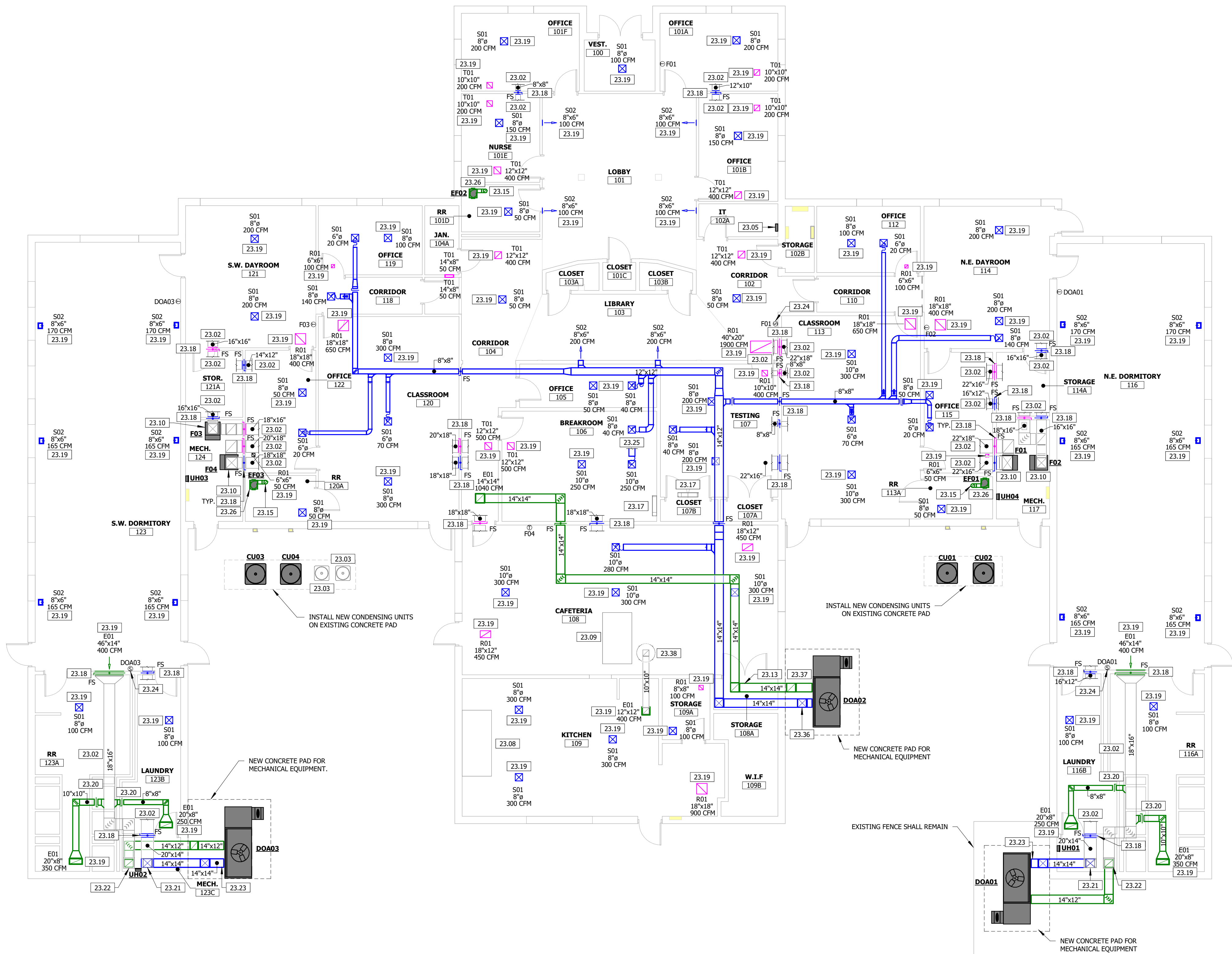
DEMO
MECHANICAL
PLAN

SHEET NUMBER:

M-001

4 OF 12 SHEETS
07/17/2025

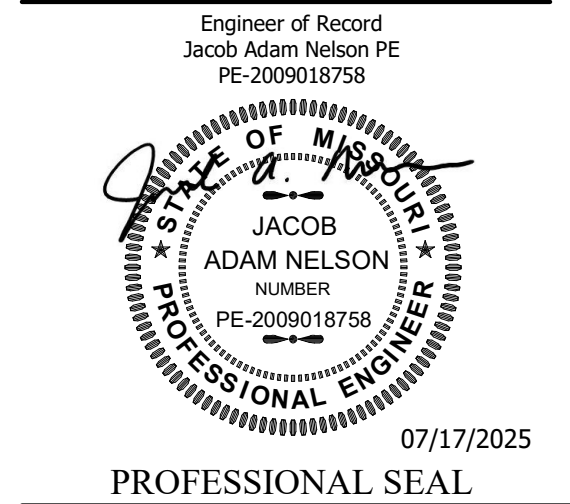
7/17/2025 16:46:43



1 MECHANICAL PLAN
1/8" = 1'-0"

KEYNOTE LEGEND	
KEY VALUE	KEYNOTE TEXT
23.02	EXISTING DUCTWORK SHALL REMAIN.
23.03	EXISTING CONDENSING UNIT AND ASSOCIATED REFRIGERANT PIPING SHALL REMAIN.
23.05	LOCATION OF NEW BAS PANEL.
23.08	EXISTING KITCHEN HOOD AND ASSOCIATED DUCTWORK SHALL REMAIN.
23.09	EXISTING MAKEUP AIR UNIT LOCATED IN ATTIC AND ASSOCIATED DUCTWORK SHALL REMAIN.
23.10	INSTALL NEW FURNACE AND EVAPORATOR COIL IN PLACE OF EXISTING EQUIPMENT. CONNECT EXISTING SUPPLY AND RETURN DUCTWORK TO NEW EQUIPMENT. MAKE DUCTWORK MODIFICATIONS AS REQUIRED FOR NEW EQUIPMENT CONNECTIONS.
23.13	NEW VENTILATION AND EXHAUST DUCTWORK UP INTO ATTIC SPACE.
23.15	ROUTE NEW 6" EXHAUST DUCT THROUGH EXISTING ROOF PENETRATION. TERMINATE IN ROOF CAP EQUIVALENT TO FMCO BROP. ROOF CAP SHALL HAVE BACKDRIFT DAMPER AND BIRD SCREEN.
23.17	EXISTING WALL MOUNT FAN TERMINAL UNIT AND ASSOCIATED REFRIGERANT LINES OUT TO CONDENSING UNIT SHALL REMAIN.
23.18	ALTERNATE NO. 1: INSTALL NEW FIRE/SMOKE DAMPER IN EXISTING DUCTWORK. FIELD VERIFY EXISTING SIZE AND LOCATION.
23.19	INSTALL AIR DEVICE IN EXISTING CEILING/WALL OPENING. FIELD VERIFY EXISTING OPENING SIZE.
23.20	CONNECT NEW EXHAUST DUCT INTO EXISTING DUCT. FIELD VERIFY EXISTING SIZE AND LOCATION.
23.21	CONNECT NEW 14"x14" SUPPLY DUCT TO EXISTING 20"x14" DUCT. FIELD VERIFY EXISTING SIZE AND LOCATION.
23.22	CONNECT NEW 14"x12" EXHAUST DUCT TO EXISTING 18"x16" DUCT. FIELD VERIFY EXISTING SIZE AND LOCATION.
23.23	CONNECT NEW 14"x14" SUPPLY AND 14"x12" EXHAUST TO NEW DOAS UNIT. PROVIDE FLEXIBLE CONNECTION TO UNIT.
23.24	PROVIDE TEMPERATURE AVERAGING SENSOR FOR EQUIPMENT CONTROL. COORDINATE REQUIREMENTS WITH CONTROLS AND ELECTRICAL CONTRACTOR.
23.25	CONNECT NEW SUPPLY AIR DUCT TO EXISTING SUPPLY DUCTWORK.
23.26	INSTALL NEW EXHAUST FAN IN EXISTING CEILING OPENING. MODIFY OPENING AS REQUIRED FOR NEW INSTALLATION.
23.36	ROUTE DUCTWORK UP OUTSIDE OF BUILDING AS HIGH AS POSSIBLE BEFORE PENETRATING BUILDINGS.
23.37	CONNECT NEW 14"x14" SUPPLY AND 14"x14" EXHAUST TO NEW DOAS UNIT. PROVIDE FLEXIBLE CONNECTION TO UNIT.
23.38	EXISTING EXHAUST FAN LOCATED ON ROOF AND ASSOCIATED DUCTWORK SHALL REMAIN.

STATE OF MISSOURI
MIKE KEHOE,
GOVERNOR



OFFICE OF
ADMINISTRATION
DIVISION OF FACILITIES
MANAGEMENT, DESIGN
AND CONSTRUCTION
DEPARTMENT OF
SOCIAL SERVICES
DIVISION OF YOUTH
SERVICES

GENTRY RESIDENTIAL
TREATMENT CENTER
REPLACE HVAC

2001 DYS DR,
CABOOL, MO 65689-9166

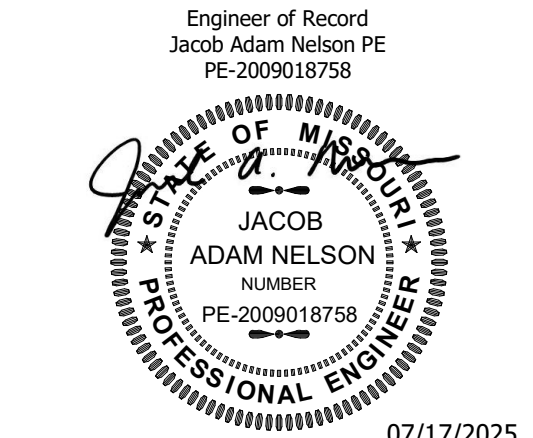
PROJECT # H2409-01
SITE # 7712
FACILITY # 8877712003

REVISION:
DATE:
REVISION:
DATE:
REVISION:
DATE:
ISSUE DATE: 07/17/2025

CAD DWG FILE: H2409-01
DRAWN BY: KP
CHECKED BY: JN
DESIGNED BY: JK

SHEET TITLE:
MECHANICAL
PLAN

SHEET NUMBER:
M-101
5 OF 12 SHEETS
07/17/2025



PROFESSIONAL SEAL



OFFICE OF
ADMINISTRATION
DIVISION OF FACILITIES
MANAGEMENT, DESIGN
AND CONSTRUCTION
DEPARTMENT OF
SOCIAL SERVICES
DIVISION OF YOUTH
SERVICES

GENTRY RESIDENTIAL
TREATMENT CENTER
REPLACE HVAC

2001 DYS DR,
CABOOL, MO 65689-9166

PROJECT # H2409-01
SITE # 7712
FACILITY # 8877712003

REVISION:
DATE:
REVISION:
DATE:
REVISION:
DATE:
ISSUE DATE: 07/17/2025

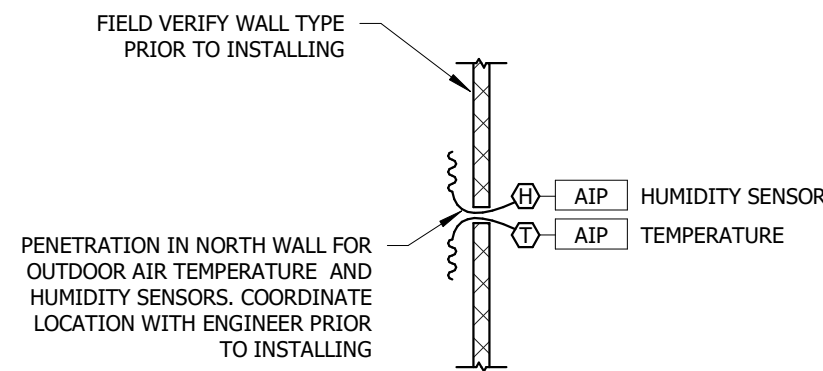
CAD DWG FILE: H2409-01
DRAWN BY: KP
CHECKED BY: JN
DESIGNED BY: JK

SHEET TITLE:
BUILDING
AUTOMATION
CONTROL
DRAWINGS

SHEET NUMBER:

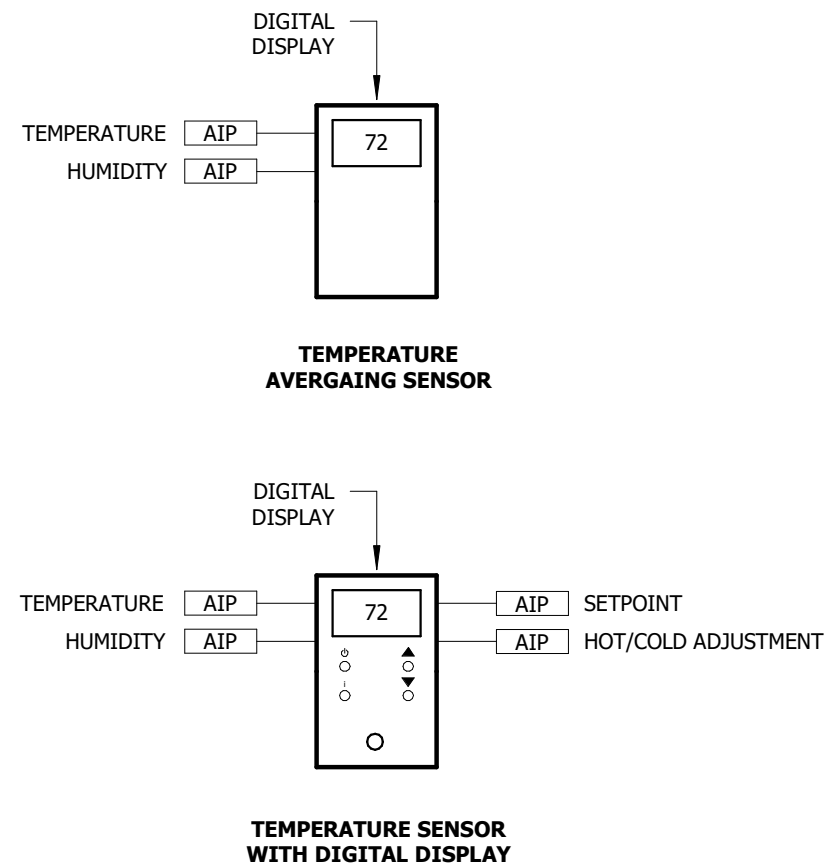
M-201

7 OF 12 SHEETS
07/17/2025



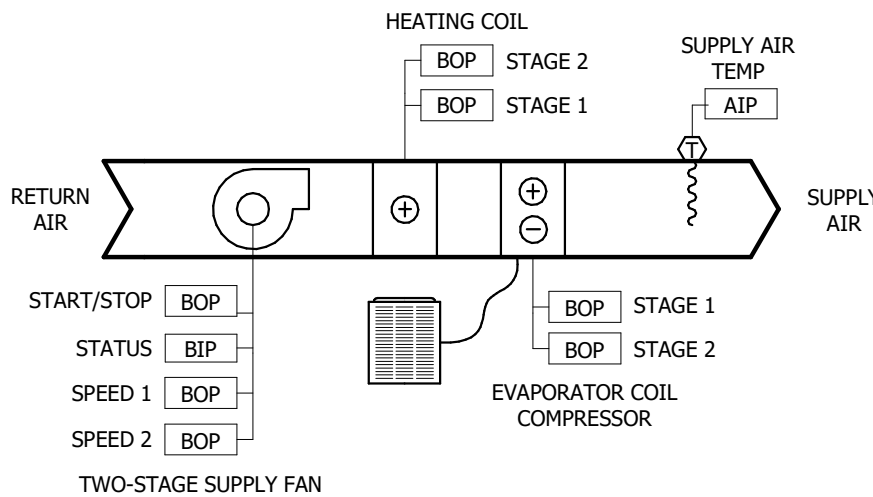
4 BAS - OUTDOOR SENSORS

NOT TO SCALE



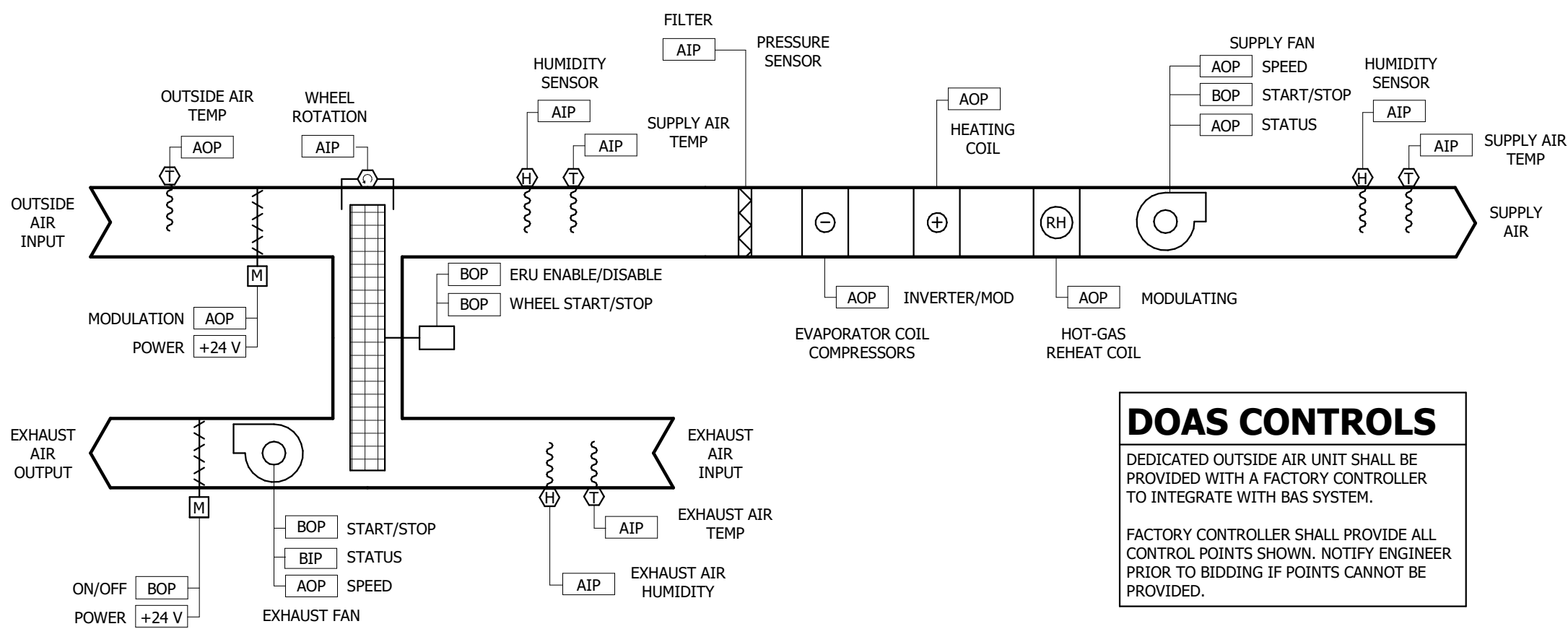
3 BAS - SENSORS

NOT TO SCALE



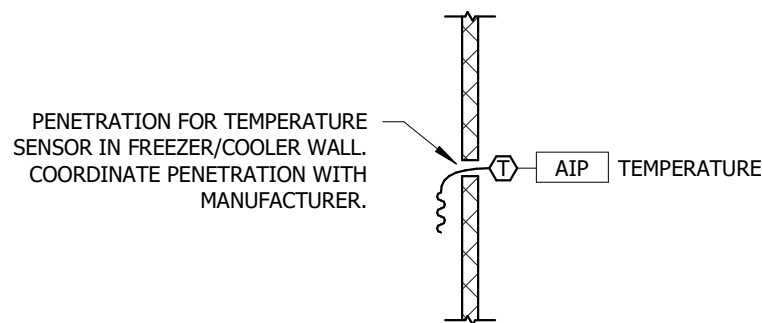
2 BAS - FURNACE AND CONDENSING UNIT

NOT TO SCALE



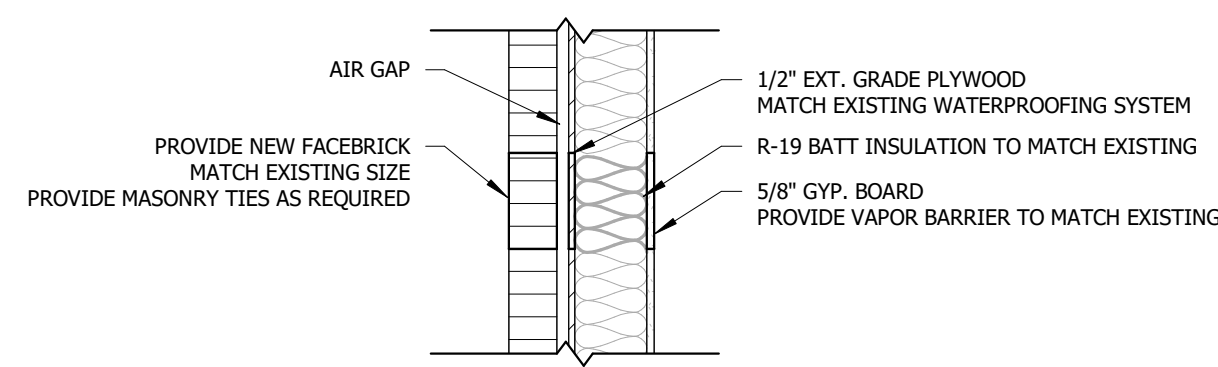
1 BAS - DEDICATED OUTSIDE AIR UNIT

NOT TO SCALE



5 BAS - FREEZER/COOLER SENSOR

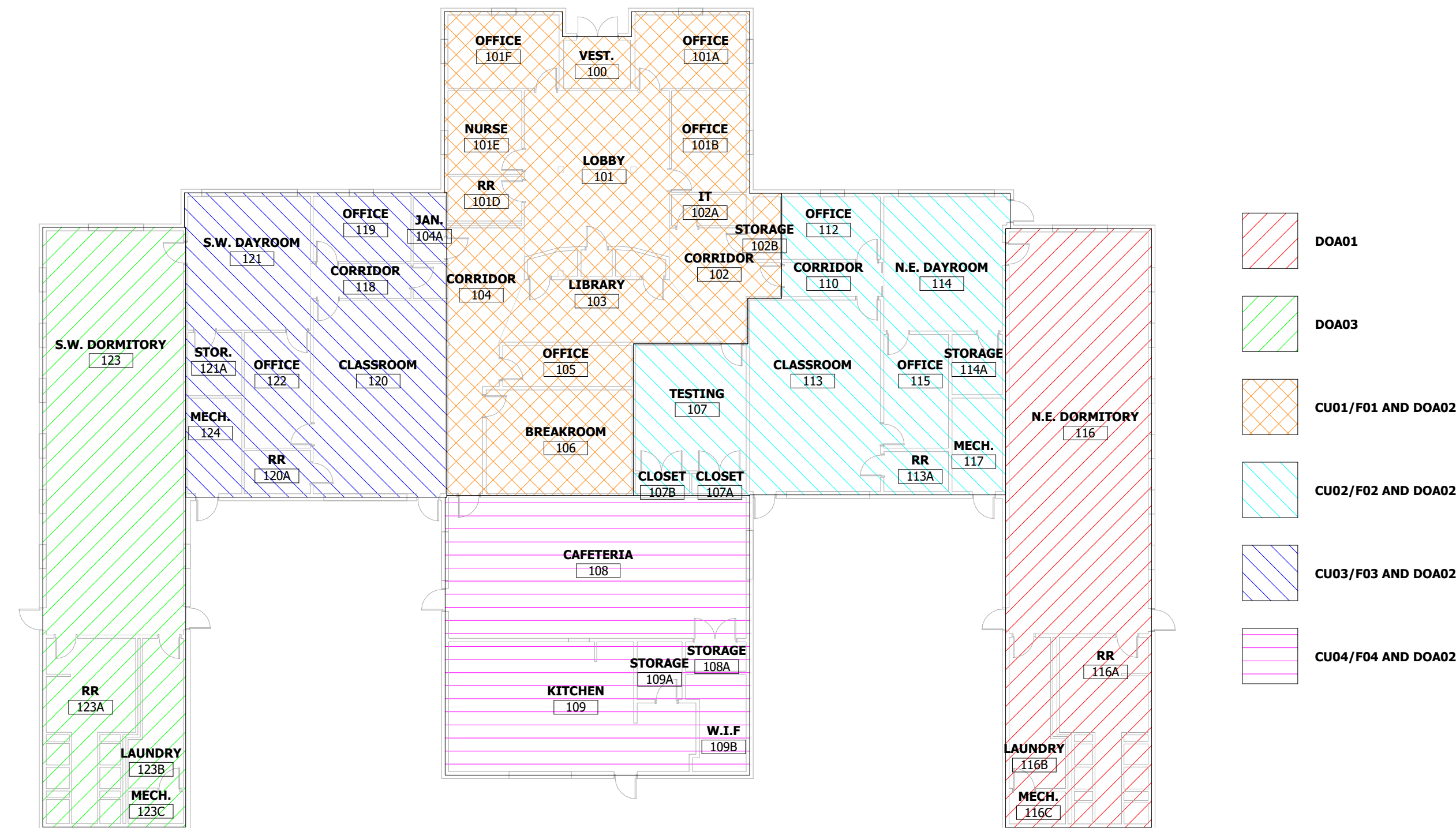
NOT TO SCALE



NOTE:
1. CONTRACTOR SHALL FIELD VERIFY AND MATCH EXISTING CONDITIONS.

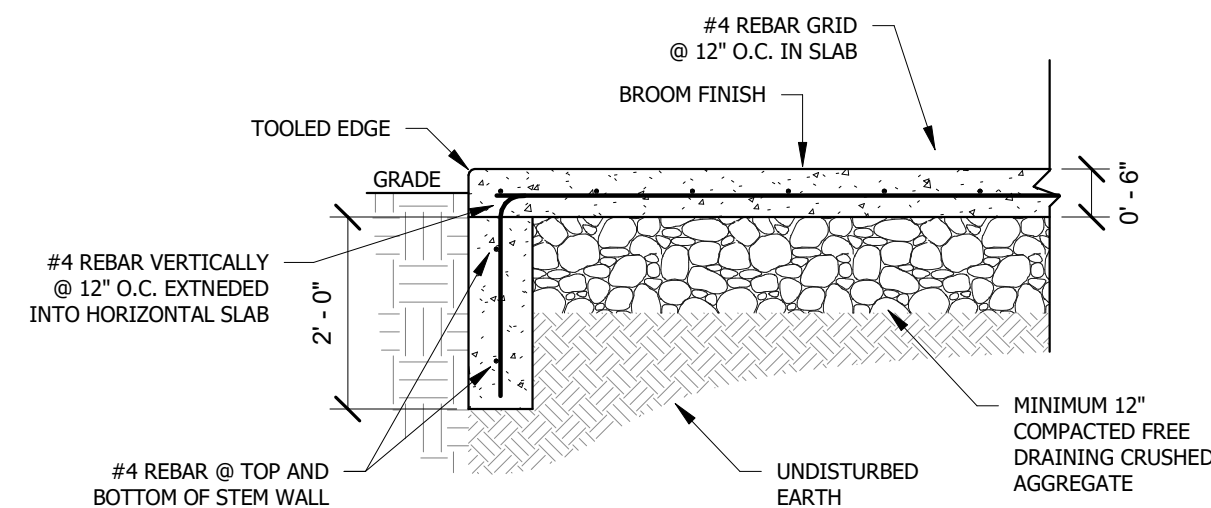
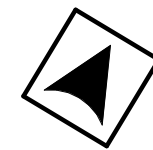
8 EXTERIOR WALL REPAIR DETAIL

NOT TO SCALE



7 TEST AND BALANCE PLAN

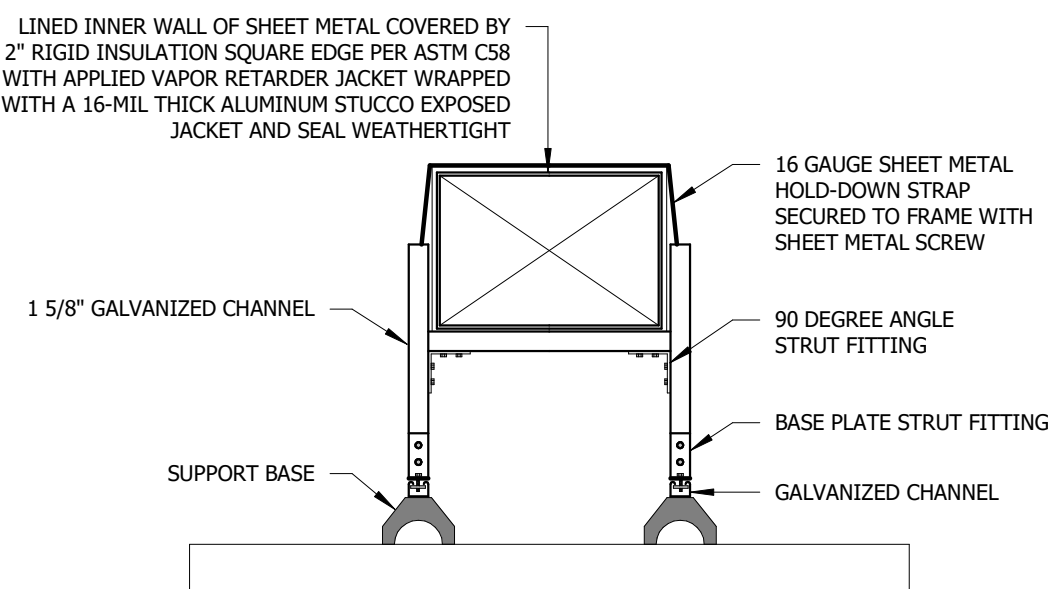
NOT TO SCALE



NOTES:
1. COORDINATE DIMENSIONS OF PAD WITH EQUIPMENT AND INCLUDE SUFFICIENT SPACE ON ALL SIDE FOR MAINTENANCE.
2. INSTALL EQUIPMENT ANCHOR BOLTS AS REQUIRED.

6 CONCRETE PAD

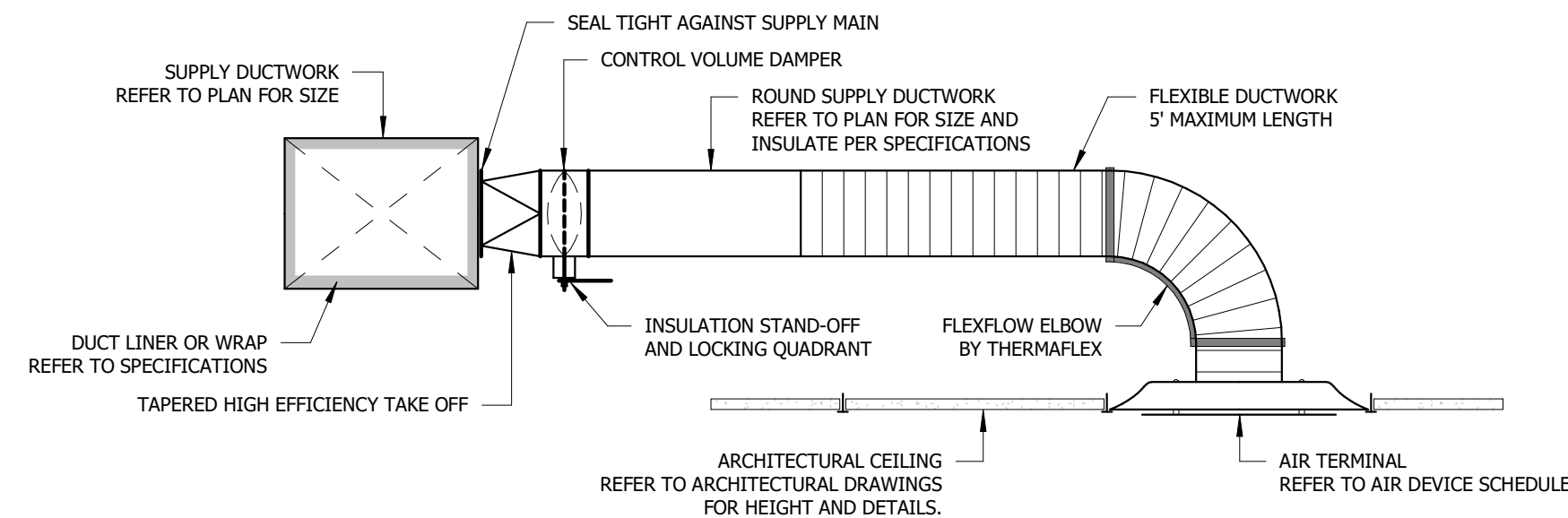
NOT TO SCALE



NOTES:
1. SUPPORT ASSEMBLY SHALL BE ADEQUATELY SIZED PER MANUFACTURERS REQUIREMENTS.
2. SPACE DUCT SUPPORTS IN ACCORDANCE WITH APPLICABLE CODES INCLUDING IMC.
3. SUPPORT ASSEMBLY SHALL BE EATON B-LINE SERIES STRUT SYSTEM WITH DURA-BLOK SUPPORT BASES OR APPROVED EQUAL.
4. PAINT SUPPORT ASSEMBLY WITH (2) COATS OF EXTERIOR RATED/UV RESISTANT ACRYLIC/ENAMEL.

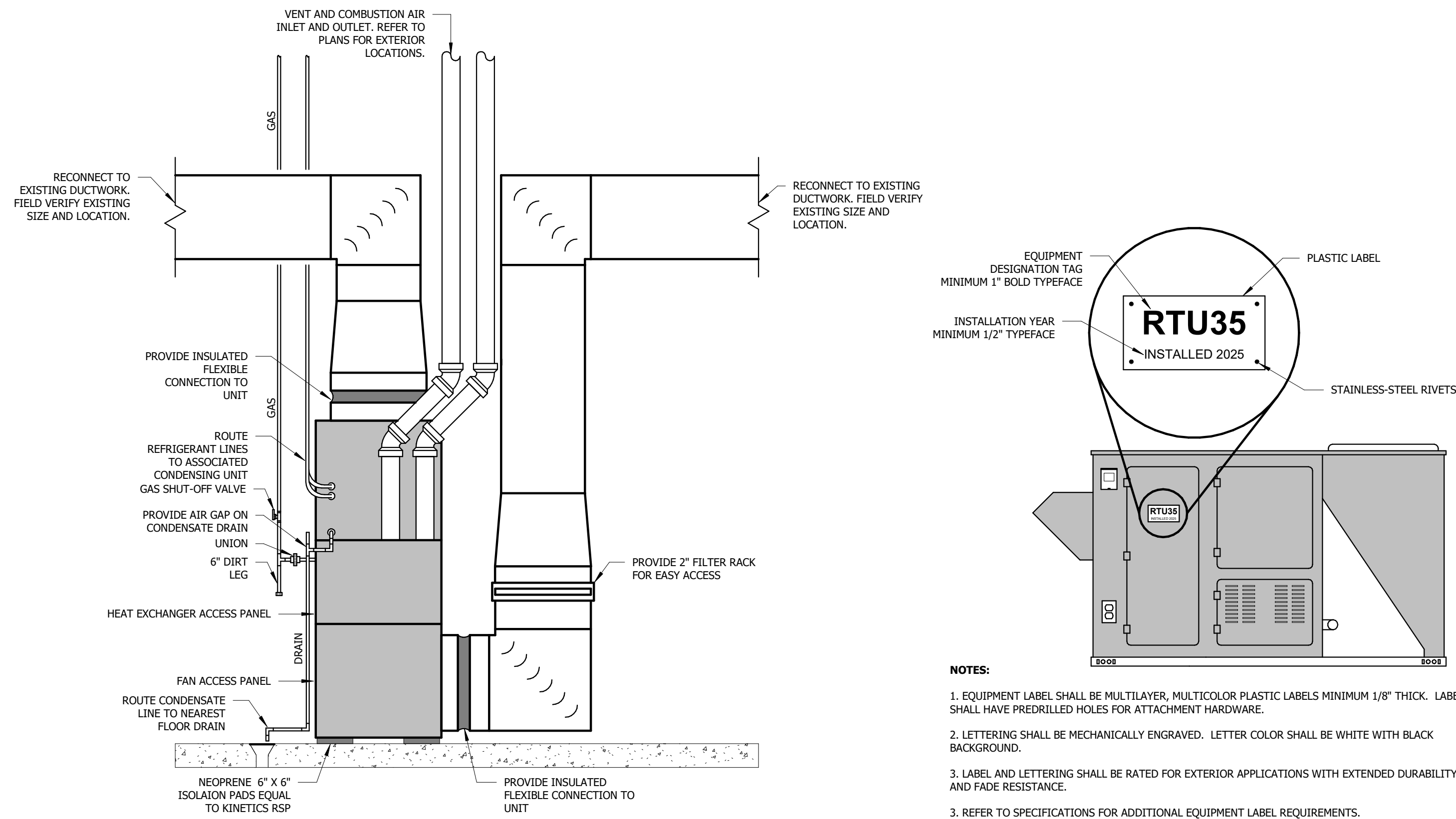
5 EXTERIOR DUCTWORK

NOT TO SCALE



4 SUPPLY AIR DIFFUSER

NOT TO SCALE



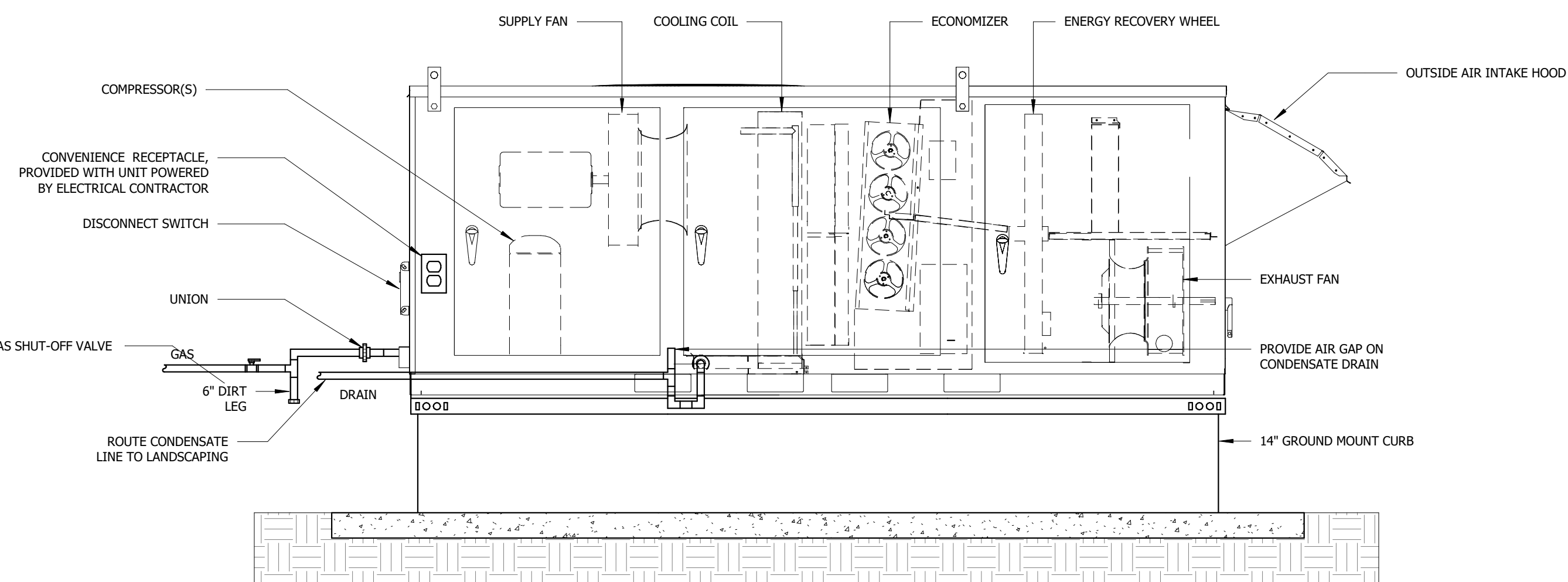
NOTES:
1. EQUIPMENT LABEL SHALL BE MULTILAYER, MULTICOLOR PLASTIC LABELS MINIMUM 1/8" THICK. LABEL SHALL HAVE PREDRILLED HOLES FOR ATTACHMENT HARDWARE.
2. LETTERING SHALL BE MECHANICALLY ENGRAVED. LETTER COLOR SHALL BE WHITE WITH BLACK BACKGROUND.
3. LABEL AND LETTERING SHALL BE RATED FOR EXTERIOR APPLICATIONS WITH EXTENDED DURABILITY AND FADE RESISTANCE.
3. REFER TO SPECIFICATIONS FOR ADDITIONAL EQUIPMENT LABEL REQUIREMENTS.

3 FURNACE

NOT TO SCALE

2 EQUIPMENT LABEL

NOT TO SCALE



1 GROUND MOUNT DOA UNIT

NOT TO SCALE

STATE OF MISSOURI
MIKE KEHOE,
GOVERNOR

Engineer of Record
Jacob Adam Nelson PE
PE-2009018758



07/17/2025
PROFESSIONAL SEAL

TRUE
ENGINEERING
MECHANICAL • ELECTRICAL • PLUMBING
1200 E WOODHURST DR, STE P
SPRINGFIELD, MO 65804
417.708.7025
WWW.TRUE-MEP.COM

OFFICE OF
ADMINISTRATION
DIVISION OF FACILITIES
MANAGEMENT, DESIGN
AND CONSTRUCTION
DEPARTMENT OF
SOCIAL SERVICES
DIVISION OF YOUTH
SERVICES

GENTRY RESIDENTIAL
TREATMENT CENTER
REPLACE HVAC

2001 DYS DR,
CABOOL, MO 65689-9166

PROJECT # H2409-01
SITE # 7712
FACILITY # 8877712003

REVISION:
DATE:
REVISION:
DATE:
REVISION:
DATE:
ISSUE DATE: 07/17/2025

CAD DWG FILE: H2409-01
DRAWN BY: KP
CHECKED BY: JN
DESIGNED BY: JK

SHEET TITLE:

MECHANICAL
DETAILS

SHEET NUMBER:

M-202

8 OF 12 SHEETS
07/17/2025

UNIT HEATER SCHEDULE

NOTES:

1. FACTORY MOUNTED THERMOSTAT

2. FACTORY INSTALLED ELECTRICAL SERVICE DISCONNECT SWITCH.

3. PROVIDE SURFACE MOUNT KIT.

TYPE MARK

MANUFACTURER

MODEL NUMBER

KW

FLA

MOCp

VOLTAGE

NOTES

EQUIVALENTS

UH01

QMARK

LKF151F

1.5

12.5

20

120/1

1,2,3

SEE SPECS

UH02

QMARK

LKF151F

1.5

12.5

20

120/1

1,2,3

SEE SPECS

UH03

QMARK

LKF151F

1.5

12.5

20

120/1

1,2,3

SEE SPECS

UH04

QMARK

LKF151F

1.5

12.5

20

120/1

1,2,3

SEE SPECS

AIR DEVICE SCHEDULE

NOTES:

1. GRILLE/DIFFUSER NECK SHALL BE SAME SIZE AS BRANCH DUCTWORK UNLESS NOTED OTHERWISE ON PLAN.

2. DIFFUSER DISCHARGE AIR PATTERN SHALL BE 4-WAY UNLESS NOTED BY DIRECTION ON PLANS.

3. GRILLE/DIFFUSER SHALL BE FIELD PAINTABLE.

4. PROVIDE PLASTER FRAME ADAPTER FOR LAY-IN INTO GYPSUM CEILING.

TYPE MARK

SYTEM TYPE

MANUFACTURER

MODEL NUMBER

MODULE SIZE

FRAME

FINISH

DAMPER

MAX NC RATING

EXTERNAL STATIC (WC)

NOTES

EQUIVALENTS

ED1

EXHAUST

KRUEGER

EGCS

SEE PLAN

SURFACE

PAINT

OPD

30

0.1"

1,3

TITUS, PRICE

AD1

RETURN

KRUEGER

EGCS

SEE PLAN

SURFACE

PAINT

30

0.08"

1,3

TITUS, PRICE

S01

SUPPLY

KRUEGER

PLQ

12" X 12"

SURFACE

WHITE

PRN100

30

0.1"

1,2,4

TITUS, PRICE

S02

SUPPLY

KRUEGER

880

SEE PLAN

SURFACE

PAINT

OPD

30

0.1"

1,3

TITUS, PRICE

T01

TRANSFER

KRUEGER

EGCS

SEE PLAN

SURFACE

PAINT

-

30

0.08"

1,3

TITUS, PRICE

EXHAUST FAN SCHEDULE

NOTES:

1. FACTORY MOUNTED DISCONNECTING MEANS.

2. FAN SPEED CONTROLLER.

3. VIBRATION ISOLATION SUPPORTS.

4. WHITE PLASTIC GRILLE.

5. FAN SHALL BE WIRED THROUGH LIGHT SWITCH.

TYPE MARK

MANUFACTURER

MODEL NUMBER

CFM

EXTERNAL STATIC (WC)

MOUNTING

FINISH

VOLTAGE

MOTOR HP (WATTS)

NOTES

EQUIVALENTS

EF01

COOK

GC-128

75

0.25"

CEILING

STANDARD

120/1

(26)

1,2,3,4,5

SEE SPECS

EF02

COOK

GC-128

75

0.25"

CEILING

STANDARD

120/1

(26)

1,2,3,4,5

SEE SPECS

EF03

COOK

GC-128

75

0.25"

CEILING

STANDARD

120/1

(26)

1,2,3,4,5

SEE SPECS

CONDENSING UNIT SCHEDULE

NOTES:

1. REFER TO SPECIFICATIONS FOR REFRIGERANT PIPING INSULATION REQUIREMENTS.

2. PROVIDE ALL REFRIGERATION SYSTEM ACCESSORIES REQUIRED BY MANUFACTURER FOR GIVEN LINE SET ROUTING.

3. TWO STAGE COMPRESSOR FOR TWO STAGES OF COOLING CAPACITY.

4. PROVIDE REFRIGERANT DETECTION SYSTEM.

TYPE MARK

MANUFACTURER

TONNAGE

CONDENSER MODEL NUMBER

COIL MODEL NUMBER

ENTERING AIR DB

ENTERING AIR WB

SENSIBLE (MBH)

TOTAL (MBH)

MCA

MOCp

VOLTAGE

NOTES

EQUIVALENTS

CU01

RHEEM

5

RA13NY60AJ1NA

RCFY6024STANMC

72

60

40.1

44.8

31

50

208/1

1,2,3,4

SEE SPECS

CU02

RHEEM

4

RA13NY48AJ1NA

RCFY4821STAMC

72

60

28.5

39.2

30

50

208/1

1,2,3,4

SEE SPECS

CU03

RHEEM

3

RA13NY36AJ1NA

RCFY3617STANMC

72

60

25.2

31.8

22

35

208/1

1,2,3,4

SEE SPECS

CU04

RHEEM

5

RA13NY60AJ1NA

RCFY6024STANMC

72

60

43.9

51.2

31

50

208/1

1,2,3,4

SEE SPECS

FURNACE SCHEDULE

NOTES:

1. TWO STAGE NATURAL GAS HEAT.

2. PROVIDE ACCESSIBLE FILTER RACK AND 1" FILTERS WITH MINIMUM MERV 8 RATING.

3. COMBUSTION INTAKE AND EXHAUST CONCENTRIC ROOF TERMINATION KIT.

4. PROVIDE TERMINAL STRIP FOR CONTROL BY BAS CONTRACTOR. COORDINATE WITH BAS CONTRACTOR.

5. TWO STAGE FAN TO MATCH HEATING/COOLING CAPACITY.

TYPE MARK

MANUFACTURER

MODEL NUMBER

SUPPLY AIR (CFM)

EXTERNAL STATIC (WC)

ENTERING AIR DB

HEATING INPUT (MBH)

HEATING OUTPUT (MBH)

LEAVING AIR DB

MCA

MOCp

VOLTAGE

NOTES

EQUIVALENTS

F01

RHEEM

R96TA08S2S21MSA

1900

0.5"

60

84

82

95

13.3

20

120/1

1,2,3,4,5

SEE SPECS

F02

RHEEM

R96TA070S2S21MSA

1600

0.5"

60

70

68

95

11.6

20

120/1

1,2,3,4,5

SEE SPECS

F03

RHEEM

R96TA070S2S21MSA

1200

0.5"

60

70

68

95

8.0

15

120/1

1,2,3,4,5

SEE SPECS

F04

RHEEM

R96TA08S2S21MSA

1900

0.5"

60

84

82

95

13.3

20

120/1

1,2,3,4,5

SEE SPECS

DEDICATED OUTSIDE AIR UNIT SCHEDULE

NOTES:

1. FACTORY MOUNTED DISCONNECTING MEANS.

2. MOTORIZED EXHAUST AND OUTSIDE AIR DAMPERS.

3. 2" MERV 8 FILTERS ON SUPPLY AND EXHAUST AIR STREAMS.

4. WHEEL ROTATION SENSOR.

5. DIRTY FILTER SENSOR.

6. TIMED EXHAUST FROST CONTROL.

7. INTAKE AND EXHAUST HOOD.

8. DOUBLE WALL CONSTRUCTION.

9. INTEGRATE WITH BAS SYSTEM. COORDINATE WITH BAS CONTRACTOR.

10. VARIABLE SPEED SUPPLY AND EXHAUST FAN.

11. HIGH TURNDOWN MODULATING GAS HEAT. BURNER SHALL BE SIZED ASSUMING ERW IS OFF.

12. MODULATING HOT GAS REHEAT COIL TO MAINTAIN LEAVING AIR RELATIVE HUMIDITY OF 50% RH.

13. FACTORY WIRED, FACTORY POWERED CONVENIENCE RECEPTACLE.

14. CONDENSER HAIL GUARDS.

15. REFER TO SPECIFICATIONS FOR COMPRESSOR AND HEAT EXCHANGER WARRANTIES.

16. VARIABLE SPEED OR DIGITAL COMPRESSOR(S) FOR MODULATING COOLING CONTROL.

17. FACTORY STARTUP REQUIRED BY EQUIPMENT REP, CONTROLS CONTRACTOR, AND MECHANICAL CONTRACTOR.

TYPE MARK

MANUFACTURER

MODEL NUMBER

SUPPLY AIR (CFM)

EXHAUST AIR (CFM)

ENERGY RECOVERY

COOLING

SA (DB/WB) RA (DB/WB) OA (DB/WB)

HEATING

SA (DB/WB) RA (DB/WB) OA (DB/WB)

SUPPLY FAN

ESP (WC) HP

EXHAUST FAN

ESP (WC) HP

COOLING

EAT (DB/WB) SENSIBLE (MBH) TOTAL (MBH) HGRH (MBH)

LAT (DB/WB)

ETA (DB/WB)

HEATING

INPUT (MBH) OUTPUT (MBH)

LAT (DB/WB)

VOLTAGE

MCA

MOCp

WEIGHT

NOTES

EQUIVALENTS

DOA01

AAON

RQ-005

1200

1000

83.3/67.872.0/60.095.0/74.033.9/27.572.0/60.00.0/0.01.0"

2

0.5"

1

83.3/67.839.057.325.155.0/54.033.9/27.5140113.495.0/60.0208/338501430

1 THRU 17

SEE SPECS

DOA02

AAON

RQ-005

1300

1040

84.2/68.372.0/60.095.0/74.031.3/25.870.0/50.00.0/0.01.0"

2

0.5"

1

84.2/68.341.158.824.972.0/60.031.3/25.8140113.470.0/50.0208/338501430

1 THRU 17

SEE SPECS

DOA03

AAON

RQ-005

1200

1000

83.3/67.872.0/60.095.0/74.033.9/27.572.0/60.00.0/0.01.0"

2

0.5"

1

83.3/67.839.057.325.155.0/54.033.9/27.5140113.495.0/60.0208/338501430

1 THRU 17

SEE SPECS

PROFESSIONAL SEAL



TRUE
ENGINEERING
MECHANICAL • ELECTRICAL • PLUMBING

1200 E WOODHURST DR, STE P
SPRINGFIELD, MO 65804
417.708.7025
WWW.TRUE-MEP.COM

**OFFICE OF
ADMINISTRATION
DIVISION OF FACILITIES
MANAGEMENT, DESIGN
AND CONSTRUCTION
DEPARTMENT OF
SOCIAL SERVICES
DIVISION OF YOUTH
SERVICES**

GENTRY RESIDENTIAL TREATMENT CENTER REPLACE HVAC

2001 DYS DR,
CABOOL, MO 65689-9166

PROJECT # H2409-01
SITE # 7712
FACILITY # 8877712003

REVISION:
DATE:
REVISION:
DATE:
REVISION:
DATE:
ISSUE DATE: 07/17/2025

CAD DWG FILE: H2409-01
DRAWN BY: KP
CHECKED BY: JN
DESIGNED BY: JK

SHEET TITLE:

MECHANICAL SCHEDULES

SHEET NUMBER:

M-301
9 OF 12 SHEETS
07/17/2025

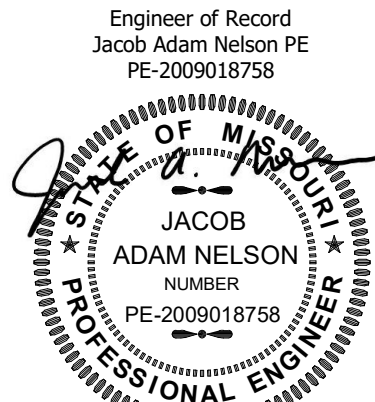
ELECTRICAL DEMO NOTES:

1. THE OWNER SHALL HAVE FIRST RIGHT OF REFUSAL ON ALL DEMOLISHED ITEMS.
2. THE CONTRACTOR SHALL FIELD VISIT THE SITE TO CONFIRM EXISTING CONDITIONS.
3. REMOVE CONDUIT, CONDUCTORS, SUPPORTS, ETC. BACK TO ELECTRICAL PANEL.
4. CONTRACTOR SHALL REPAIR ALL HOLES CREATED BY REMOVAL OF EXISTING ELECTRICAL EQUIPMENT.

KEYNOTE LEGEND

KEY VALUE	KEYNOTE TEXT
26.03	EXISTING MECHANICAL EQUIPMENT AND ASSOCIATED CONDUIT AND CONDUCTORS SHALL REMAIN.
26.19	EXISTING MAIN DISTRIBUTION PANELBOARD. EXISTING PANEL IS A SQUARE D, 1 LINE, 288V/120-VOLT, 800-AMP PANELBOARD.
26.20	EXISTING BRANCH PANELBOARD. EXISTING PANEL IS A SQUARE D, NO, 208Y/120-VOLT, 225-AMP PANELBOARD.
26.21	EXISTING THERMOSTAT ROUGH-IN SHALL REMAIN.
28.01	LOCATION OF EXISTING FIRE ALARM CONTROL PANEL. EXISTING PANEL IS A HONEYWELL SILENT NIGHT PANEL.
D26.01	REMOVE EXISTING ELECTRICAL CONNECTION TO MECHANICAL EQUIPMENT AND ASSOCIATED DISCONNECT AND CONDUIT AND CONDUCTORS BACK TO PANELBOARD.
D26.02	REMOVE EXISTING ELECTRICAL CONNECTION TO MECHANICAL EQUIPMENT AND PREPARE CONDUIT AND CONDUCTORS FOR NEW CONNECTION. REFER TO IMPROVEMENT PLAN FOR ADDITIONAL REQUIREMENTS.

STATE OF MISSOURI
MIKE KEHOE,
GOVERNOR



07/17/2025
PROFESSIONAL SEAL



OFFICE OF
ADMINISTRATION
DIVISION OF FACILITIES
MANAGEMENT, DESIGN
AND CONSTRUCTION
DEPARTMENT OF
SOCIAL SERVICES
DIVISION OF YOUTH
SERVICES

GENTRY RESIDENTIAL
TREATMENT CENTER
REPLACE HVAC

2001 DYS DR,
CABOOL, MO 65689-9166

PROJECT # H2409-01
SITE # 7712
FACILITY # 8877712003

REVISION:
DATE:
REVISION:
DATE:
REVISION:
DATE:
ISSUE DATE: 07/17/2025

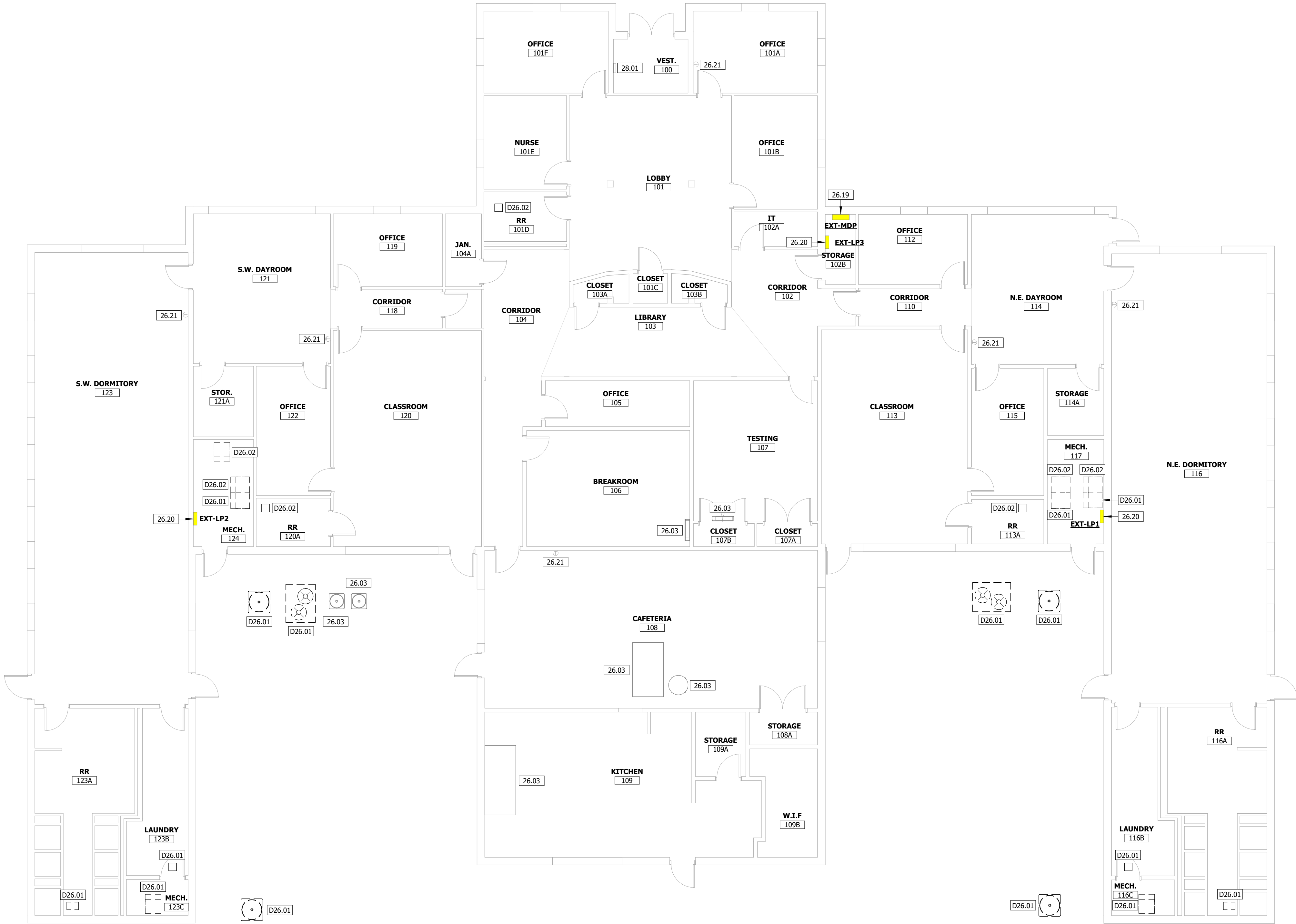
CAD DWG FILE: H2409-01
DRAWN BY: KP
CHECKED BY: JN
DESIGNED BY: JK

SHEET TITLE:
DEMO
ELECTRICAL PLAN

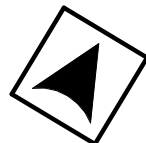
SHEET NUMBER:

E-001

10 OF 12 SHEETS
07/17/2025

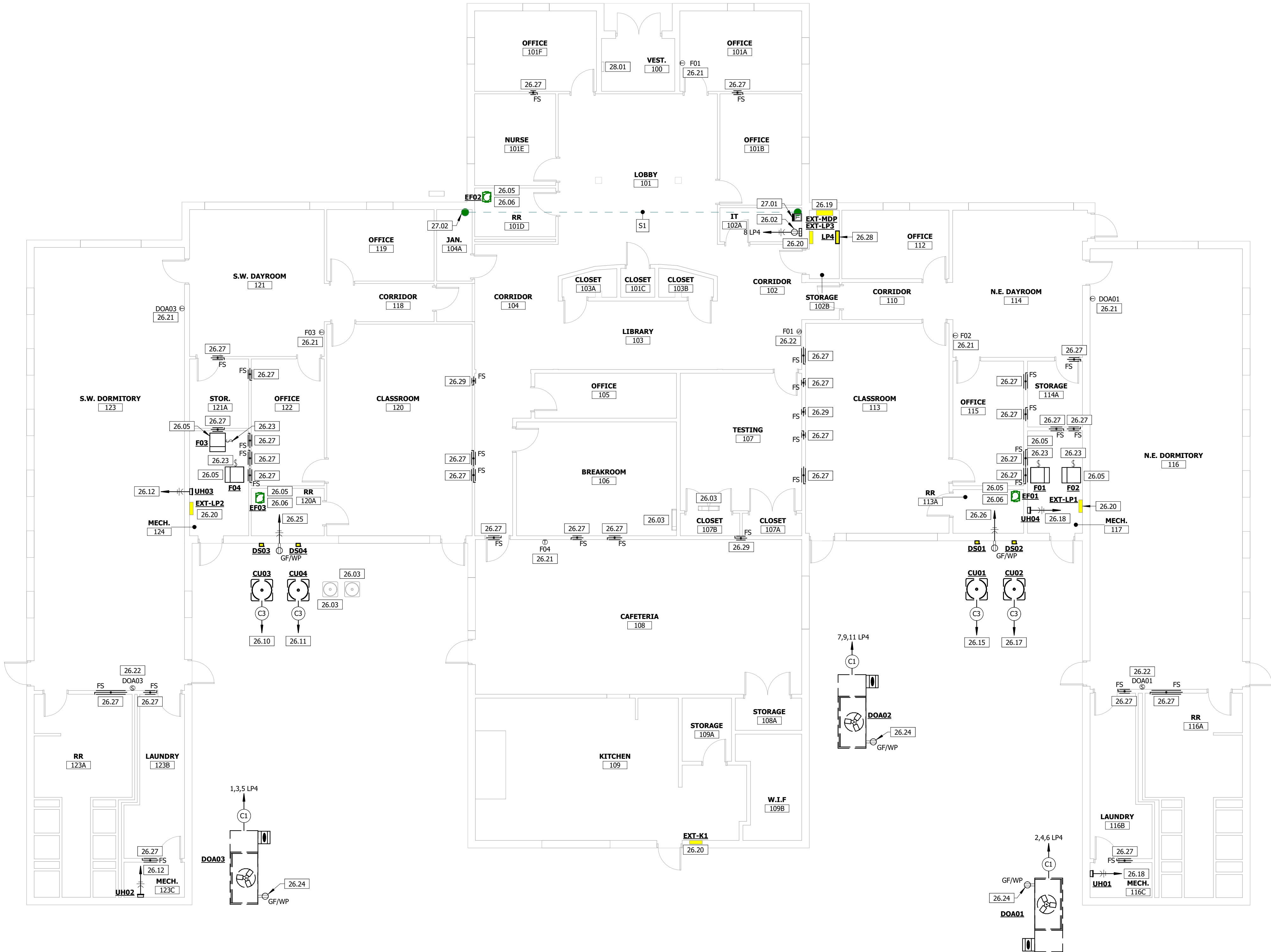


1 DEMO ELECTRICAL PLAN
1/8" = 1'-0"



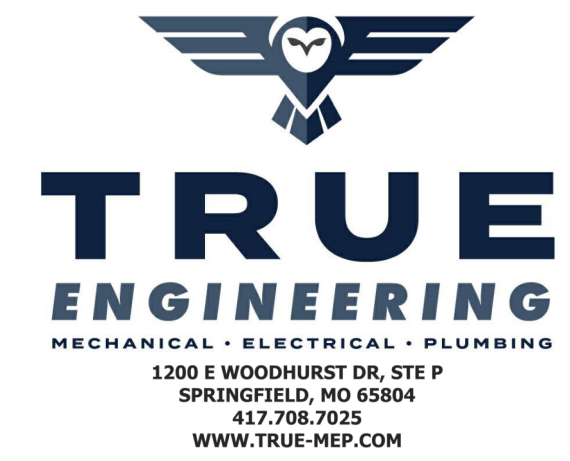
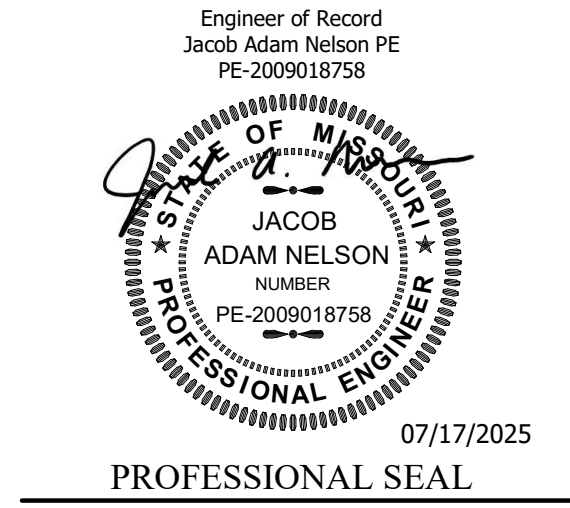
SPECIAL SYSTEM PATHWAYS		CONDUIT AND CONDUCTORS	
KEY VALUE	SIZE AND QUANTITY	KEY VALUE	SIZE AND QUANTITY
S1	(1) 1" CONDUIT WITH PULL STRING.	C1	(3) #6 AND (1) #8 GROUND IN 0.75" CONDUIT.
		C3	(2) #8 AND (1) #10 GROUND IN 0.75" CONDUIT.

KEYNOTE LEGEND	
KEY VALUE	KEYNOTE TEXT
26.02	PROVIDE ELECTRICAL CONNECTION TO BAS PANEL. COORDINATE LOCATION WITH BAS CONTRACTOR.
26.03	EXISTING MECHANICAL EQUIPMENT AND ASSOCIATED CONDUIT AND CONDUCTORS SHALL REMAIN.
26.05	RECONNECT EXISTING CONDUIT AND CONDUCTORS TO NEW MECHANICAL EQUIPMENT.
26.06	CIRCUIT EXHAUST FANS TO LIGHTING CIRCUIT. FANS SHALL TURN ON WHEN LIGHTING FIXTURES ARE ENERGIZED.
26.10	CIRCUIT TO EXISTING PANELBOARD EXT-LP2. PROVIDE NEW 2-POLE, 35-AMP, 10KA, HACR BREAKER.
26.11	CIRCUIT TO EXISTING PANELBOARD EXT-LP2. PROVIDE NEW 2-POLE, 50-AMP, 10KA, HACR BREAKER.
26.12	CIRCUIT TO EXISTING PANELBOARD EXT-LP2. PROVIDE NEW 1-POLE, 20-AMP, 10KA, HACR BREAKER.
26.15	CIRCUIT TO EXISTING PANELBOARD EXT-LP1. PROVIDE NEW 2-POLE, 50-AMP, 10KA, HACR BREAKER.
26.17	CIRCUIT TO EXISTING PANELBOARD EXT-LP1. PROVIDE NEW 2-POLE, 50-AMP, 10KA, HACR BREAKER.
26.18	CIRCUIT TO EXISTING PANELBOARD EXT-LP1. PROVIDE NEW 1-POLE, 20-AMP, 10KA, HACR BREAKER.
26.19	EXISTING MAIN DISTRIBUTION PANELBOARD. EXISTING PANEL IS A SQUARE D, I-LINE, 208Y/120-VOLT, 800-AMP PANELBOARD.
26.20	EXISTING BRANCH PANELBOARD. EXISTING PANEL IS A SQUARE D, M3, 208Y/120-VOLT, 225-AMP PANELBOARD.
26.21	EXISTING THERMOSTAT ROUGH-IN SHALL REMAIN.
26.22	COORDINATE ROUGH-IN REQUIREMENTS WITH BAS CONTRACTOR.
26.23	PROVIDE SINGLE POLE DISCONNECT SWITCH.
26.24	FACTORY WIRED AND FACTORY POWERED CONVENIENCE OUTLET.
26.25	CIRCUIT TO EXISTING PANELBOARD EXT-LP2. PROVIDE NEW 1-POLE, 20-AMP, 10KA, BREAKER.
26.26	CIRCUIT TO EXISTING PANELBOARD EXT-LP1. PROVIDE NEW 1-POLE, 20-AMP, 10KA, BREAKER.
26.27	ALTERNATE NO. 1: CONNECT NEW FIRE/SMOKE DAMPER TO EXISTING FIRE ALARM SYSTEM EXTEND WIRING AS REQUIRED FOR NEW DAMPER INSTALLATION. FIELD VERIFY EXISTING CONDITIONS AND VERIFY DAMPER TYPE WITH MECHANICAL CONTRACTOR.
26.28	INSTALL NEW 208Y/120 VOLT, 225-AMP PANELBOARD.
26.29	CONNECT NEW FIRE/SMOKE DAMPER TO EXISTING FIRE ALARM SYSTEM EXTEND WIRING AS REQUIRED FOR NEW DAMPER INSTALLATION.
27.01	PROVIDE DOUBLE GANG JUNCTION BOX WITH (2) RJ45 CAT 6 CONNECTIONS FOR BAS PANEL. COORDINATE WITH BAS CONTRACTOR.
27.02	PULL (1) CAT 6 CABLE FROM BAS PANEL TO IT RACK LOCATION. PROVIDE 15' SERVICE LOOP FOR FUTURE CONNECTION TO IT SYSTEM BY OWNER.
28.01	LOCATION OF EXISTING FIRE ALARM CONTROL PANEL. EXISTING PANEL IS A HONEYWELL SILENT NIGHT PANEL.



1 ELECTRICAL PLAN
1/8" = 1'-0"

STATE OF MISSOURI
MIKE KEHOE,
GOVERNOR



OFFICE OF
ADMINISTRATION
DIVISION OF FACILITIES
MANAGEMENT, DESIGN
AND CONSTRUCTION
DEPARTMENT OF
SOCIAL SERVICES
DIVISION OF YOUTH
SERVICES

GENTRY RESIDENTIAL
TREATMENT CENTER
REPLACE HVAC

2001 DYS DR,
CABOOL, MO 65689-9166

PROJECT # H2409-01
SITE # 7712
FACILITY # 8877712003

REVISION:
DATE:
REVISION:
DATE:
REVISION:
DATE:
ISSUE DATE: 07/17/2025

CAD DWG FILE: H2409-01
DRAWN BY: KP
CHECKED BY: JN
DESIGNED BY: JK

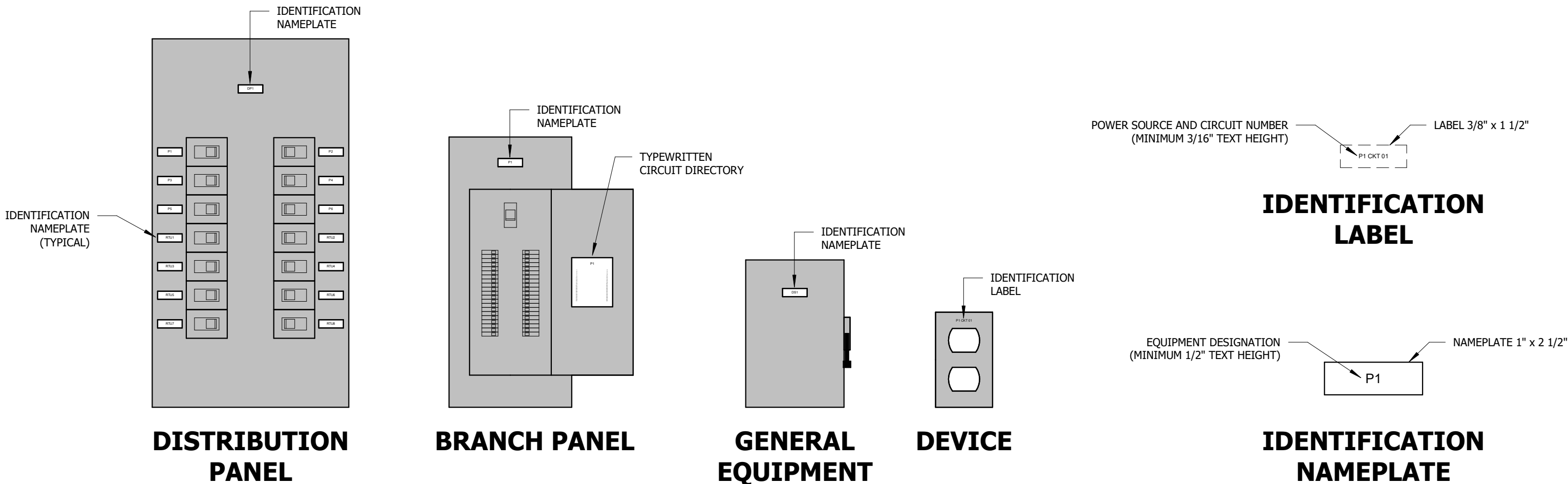
SHEET TITLE:
ELECTRICAL PLAN

SHEET NUMBER:

E-101
11 OF 12 SHEETS
07/17/2025

DISCONNECT SCHEDULE									
NOTES:									
1.	GROUND LUG KIT.								
2.	DISCONNECT SHALL BE LOCKABLE IN THE OPEN POSITION.								
TYPE MARK	MANUFACTURER	EQUIPMENT SERVED	VOLTAGE	DUTY	AMPS	POLES	ENCLOSURE NEMA TYPE	NOTES	EQUIVALENTS
DS01	SQUARE-D	CU03	208	GD	60	2	NEMA 3R	1,2	EATON
DS02	SQUARE-D	CU02	208	GD	60	2	NEMA 3R	1,2	EATON
DS03	SQUARE-D	CU05	208	GD	60	2	NEMA 3R	1,2	EATON
DS04	SQUARE-D	CU05	208	GD	60	2	NEMA 3R	1,2	EATON

Branch Panel: LP4															
Location: 102B - STORAGE						Volts: 120/208 Wye						A.I.C. Rating: 10 kA			
Supply From: EXT-MDP						Phases: 3						Mains Type: MLO			
Mounting: SURFACE						Wires: 4						Mains Rating: 225 A			
Enclosure: NEMA 1												Model: NQ			
Panelboard Accessories:															
1. CONCEALED HINGE, 2. FLUSH LOCKS, 3. EQUIPMENT GROUND BAR, 4. REFER TO SPECIFICATIONS FOR BUSSING MATERIAL															
CKT	CIRCUIT DESCRIPTION	TRIP	CB ACC	POLES	A		B		C		POLES	CB ACC	TRIP	CIRCUIT DESCRIPTION	CKT
1	DOA03	50 A	HACR	3	4564 VA	4564 VA					3	HACR	50 A	DOA01	2
3	--	--	--	--			4564 VA	4564 VA			--	--	--	--	4
5	--	--	--	--					4564 VA	4564 VA	--	--	--	--	6
7	DOA02	50 A	HACR	3	4323 VA	180 VA					1	--	20 A	BAS PANEL	8
9	--	--	--	--			4323 VA	0 VA			1	--	20 A	Spare	10
11	--	--	--	--					4323 VA	0 VA	1	--	20 A	Spare	12
13	Spare	20 A	--	1	0 VA	0 VA					1	--	20 A	Spare	14
15	Spare	20 A	--	1			0 VA	0 VA			1	--	20 A	Spare	16
17	Spare	20 A	--	1					0 VA	0 VA	1	--	20 A	Spare	18
19	Spare	20 A	--	1	0 VA	0 VA					1	--	20 A	Spare	20
21	Spare	20 A	--	1			0 VA	0 VA			1	--	20 A	Spare	22
23	Spare	20 A	--	1					0 VA	0 VA	1	--	20 A	Spare	24
25	Spare	20 A	--	1	0 VA	0 VA					1	--	20 A	Spare	26
27	Spare	20 A	--	1			0 VA	0 VA			1	--	20 A	Spare	28
29	Spare	20 A	--	1					0 VA	0 VA	1	--	20 A	Spare	30
31	Spare	20 A	--	1	0 VA	0 VA					1	--	20 A	Spare	32
33	Spare	20 A	--	1			0 VA	0 VA			1	--	20 A	Spare	34
35	Spare	20 A	--	1					0 VA	0 VA	1	--	20 A	Spare	36
37	Spare	20 A	--	1	0 VA	0 VA					1	--	20 A	Spare	38
39	Spare	20 A	--	1			0 VA	0 VA			1	--	20 A	Spare	40
41	Spare	20 A	--	1					0 VA	0 VA	1	--	20 A	Spare	42
Total Load:					13631 VA		13451 VA		13451 VA						
Total Amps:					114 A		112 A		112 A						
Legend:															
1. HACR = HACR RATED, 2. HLO = HAND LOCK-OFF, 3. GFCI = GROUND FAULT CIRCUIT INTERRUPTER, 4. AFCI = ARC FAULT CIRCUIT INTERRUPTER															
Load Classification		Connected Load		Demand Factor		Estimated Demand		Panel Totals							
HVAC		40352 VA		100.00%		40352 VA									
Receptacle		180 VA		100.00%		180 VA		Total Conn. Load: 40532 VA							
								Total Est. Demand: 40532 VA							
								Total Conn.: 113 A							
								Total Est. Demand: 113 A							
Notes:															



- NOTES:**
- INTERIOR IDENTIFICATION NAMEPLATES SHALL BE MULTILAYER PLASTIC/ACRYLIC WITH MINIMUM THICKNESS OF 1/8" AND BEVELED EDGES. NAMEPLATES SHALL BE ATTACHED WITH ADHESIVE.
 - EXTERIOR IDENTIFICATION NAMEPLATES SHALL BE ALUMINUM OR STAINLESS STEEL WITH MINIMUM THICKNESS OF 1/32". NAMEPLATES SHALL BE ATTACHED WITH RIVETS.
 - IDENTIFICATION NAMEPLATE LETTERING SHALL BE MECHANICALLY ENGRAVED.
 - COLOR FOR IDENTIFICATION NAMES PLATES:
 - A. NORMAL POWER SYSTEMS: WHITE TEXT WITH BLACK BACKGROUND
 - B. EMERGENCY POWER SYSTEMS: WHITE TEXT WITH RED BACKGROUND
 - IDENTIFICATION LABELS SHALL BE SELF-ADHESIVE LAMINATED PLASTIC LABELS WITH BLACK TEXT ON CLEAR BACKGROUND.
 - REFER TO SPECIFICATION SECTION 26 05 53 IDENTIFICATION FOR ELECTRICAL SYSTEMS FOR ADDITIONAL REQUIREMENTS.

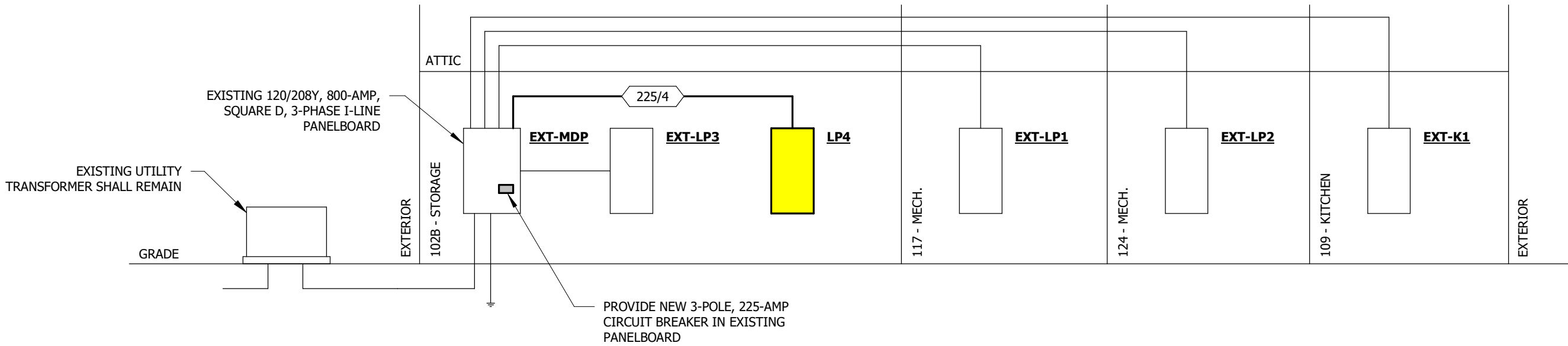
2 ELECTRICAL LABELING

NOT TO SCALE

GENERAL NOTES:

- JUNCTION BOX/CABINET(S) SHALL BE SIZED PER NEC REQUIREMENTS, AND BEAR NEMA ENCLOSURE RATING FOR APPLICABLE INSTALLATION ENVIRONMENT.
- EXISTING CONDITIONS INCLUDING BUT NOT LIMITED TO SIZES, RATINGS, LOCATIONS, AND DIMENSIONS SHALL BE FIELD VERIFIED.
- ALL CONDUCTORS ARE COPPER UNLESS NOTED OTHERWISE.

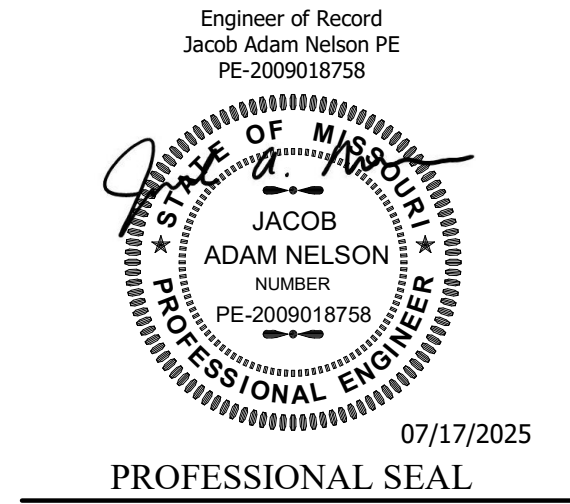
FEEDER SCHEDULE			
ALL CONDUCTORS SHALL BE COPPER PER SPECIFICATIONS			
FEEDER MARK	PARALLEL SETS	CONDUCTORS CURRENT CARRYING	CONDUIT SIZE
225/4	1	(4) #4/0	(1) #4 2.5"



1 ELECTRICAL RISER

NOT TO SCALE

STATE OF MISSOURI
MIKE KEHOE,
GOVERNOR



OFFICE OF
ADMINISTRATION
DIVISION OF FACILITIES
MANAGEMENT, DESIGN
AND CONSTRUCTION
DEPARTMENT OF
SOCIAL SERVICES
DIVISION OF YOUTH
SERVICES

GENTRY RESIDENTIAL
TREATMENT CENTER
REPLACE HVAC

2001 DYS DR,
CABOOL, MO 65689-9166

PROJECT # H2409-01
SITE # 7712
FACILITY # 8877712003

REVISION:
DATE:
REVISION:
DATE:
REVISION:
DATE:
ISSUE DATE: 07/17/2025

CAD DWG FILE: H2409-01
DRAWN BY: KP
CHECKED BY: JN
DESIGNED BY: JK

SHEET TITLE:
ELECTRICAL
DETAILS AND
SCHEDULES

SHEET NUMBER:

E-201
12 OF 12 SHEETS
07/17/2025