

ADDENDUM NO. 2

TO: PLANS AND SPECIFICATIONS FOR STATE OF MISSOURI

**Hillsboro Treatment Center,
Renovation to Interior,
Core Building
10434 State Road BB
Hillsboro, MO 63050
PROJECT NO. H2503-01**

Bid Opening Date: 1:30 PM, February 3, 2025 (Not Changed)

Bidders are hereby informed of the following:

SPECIFICATION CHANGES:

1. Section 283111 – Page 3

- a. Revise paragraph 2.1-A as follows:

Source Limitations for Fire-Alarm System and Components: Components shall be compatible with, and operate as an extension of the existing Simplex 4100ES system. Provide system manufacturer's certification that all components provided have been tested as, and will operate as, a system.

DRAWING CHANGES:

Sheet A-102

- a. On the Room Finish Schedule, in the CEILING/FINISH column replace all instances of "ASC" with "PT-7A."
- b. On the KEY TO FINISHES table, delete the following line in its' entirety: ASC | ACOUSTICAL SPRAY CEILING | SEE SPECS.

BIDDER QUESTIONS AND RESPONSES:

1. There is a note about refinishing the doors, what about existing damage, dings, gouges etc. Are those expected to be fixed in that process?

Response: *Drawing Sheet A-102 – The Room Finish Schedule, General Note #4 states:*

4. REPAIR ANY DAMAGED FINISH ON PREFINISHED DOORS – REFINISH AS REQUIRED.
2. There is a note about acoustical spray ceiling to match existing, it looked like everything was a smooth finish. Please advise on how we are supposed to finish the ceilings.

Response: *See Sheet A-102 Drawing Changes noted above.*

3. There was drywall leaning against the wall, is this for contractor use or will it be removed before we are onsite.

Response: *Drawing Sheet A-101 – GENERAL NOTES PARTITION AND WALL TYPES. Note 1 states:*

1. APPROXIMATELY 64 SHEETS OF 5/8" X 12' TYPE-X GWB ARE ON SITE AND SHALL BE INCORPORATED INTO THE WORK.

4. The owner will have everything moved out of the gym, correct?

Response: *Yes, DYS will be responsible for removing everything from the gym.*

5. Will we be able to set up a different lock on the front door for the duration of this project, so someone doesn't have to unlock the door every time they need to go outside.

Response: *Since no clients or records are on-site, DYS is fine with the doors remaining unlocked during construction each day and secured at the close of business each day.*

6. Are the unit price base bid quantities supposed to be used as an allowance and kept track of?

Response: Yes

7. What is the existing fire alarm system on site?

Response: *See revisions to Specification Section 283111 noted above.*

GENERAL:

1. Please contact April Howser, Contract Specialist, at 573-751-0053 or April.Howser@oa.mo.gov for questions about bidding procedures, MBE/WBE/SDVE Goals, and other submittal requirements.
2. The deadline for technical questions was January 28th, 2026, at Noon.
3. Changes to, or clarification of, the bid documents are only made as issued in the addenda.
4. All correspondence with respect to this project must include the State of Missouri project number as indicated above.
5. Current Plan Holders list available online at: [Bid Listing/ Electronic Plans \(Projects Currently Bidding\) | Office of Administration \(mo.gov\)](#) H250301 - Hillsboro Treatment Center-Renovations to Interior, Core Building.
6. Prospective Bidders contact American Document Solutions, 1400 Forum Blvd Suite 7A, Columbia MO 65203, 573-446-7768 to order official plans and specifications.
7. All bids shall be submitted on the bid form without additional terms and conditions, modifications, or stipulations. Each space on the bid form shall be properly filled including a bid amount for the alternates. Failure to do so will result in rejection of the bid.
8. MBE/WBE/SDVE participation requirements can be found in DIVISION 00. The MBE/WBE/SDVE participation goals are 10%/10%/3%, respectively. Only certified firms as of the bid opening date can be used to satisfy the MBE/WBE/SDVE participation goals

for this project. If a bidder is unable to meet a participation goal, a Good Faith Effort Determination Form must be completed. Failure to complete this process will result in rejection of the bid.

ATTACHMENTS:

1. Section 283111 – Fire Alarm System
2. Drawing A-102

By the Order of:

Fred L. Decker Jr., Project Manager
Division of Facilities Management,
Design and Construction
January 29, 2026

END ADDENDUM NO. 2

1.10 WARRANTY

- A. Special Warranty: Manufacturer agrees to repair or replace fire-alarm system equipment and components that fail in materials or workmanship within specified warranty period.
 - 1. Warranty Extent: All equipment and components not covered in the Maintenance Service Agreement.
 - 2. Warranty Period: Five years from date of Substantial Completion.

PART 2 - PRODUCTS**2.1 SYSTEM DESCRIPTION**

- A. Source Limitations for Fire-Alarm System and Components: Components shall be compatible with, and operate as an extension of the existing Simplex 4100ES system. Provide system manufacturer's certification that all components provided have been tested as, and will operate as, a system.

PART 3 - EXECUTION**3.1 EXAMINATION**

- A. Delegated Design: Install fire alarm devices compatible with the existing system and complying with the project's stated IBC/IFC codes in areas which lack the necessary detection or notification coverages. This determination shall be performed by a registered fire protection engineer.
- B. Examine areas and conditions for compliance with requirements for ventilation, temperature, humidity, and other conditions affecting performance of the Work.
 - 1. Verify that manufacturer's written instructions for environmental conditions have been permanently established in spaces where equipment and wiring are installed, before installation begins.
- C. Examine roughing-in for electrical connections to verify actual locations of connections before installation.
- D. Proceed with installation only after unsatisfactory conditions have been corrected.

3.2 EQUIPMENT INSTALLATION

- A. Comply with NFPA 72, NFPA 101, and requirements of authorities having jurisdiction for installation and testing of fire-alarm equipment. Install all electrical wiring to comply with requirements in NFPA 70 including, but not limited to, Article 760, "Fire Alarm Systems."
 - 1. Devices placed in service before all other trades have completed cleanup shall be replaced.
 - 2. Devices installed but not yet placed in service shall be protected from construction dust, debris, dirt, moisture, and damage according to manufacturer's written storage instructions.
- B. Connecting to Existing Equipment: Verify that existing fire-alarm system is operational before making changes or connections.

ROOM FINISH SCHEDULE

ROOM NO.	ROOM NAME	FLOOR	BASE	WALLS				DOOR	DR FRAME	CEILING		REMARKS
										HEIGHT	FINISH	
				NORTH	SOUTH	EAST	WEST					
		FINISH	FINISH	FINISH	FINISH	FINISH	FINISH	FINISH	FINISH			
CORE BUILDING												
C100	VESTIBULE	EXIST CT-1	WB/ST	PT-3	PT-1	PT-3	PT-3	ST	PT-2A	9'-0"	ACT-1	8, 13
C101	CORRIDOR	VCT-1	WB/ST	PT-1,3	PT-1,3	PT-3	PT-3	ST	PT-2A	10'-2"	PT-7A	1, 9
C102	CORRIDOR	VCT-1	WB/ST	N/A	PT-3	PT-3	PT-3	N/A	N/A	8'-0"	PT-7A	2 (PT-2B)
C103	TOILET	EXIST CT-2	CT-2	PT-3	PT-3	PT-3	PT-3	ST	PT-2A	8'-0"	PT-7A	5, 11, 13
C104	THERAPY	CPT-1	WB/ST	PT-3	PT-1	PT-3	PT-3	ST	PT-2A	VARIES	PT-7A	9
C105	OFFICE	CPT-1	WB/ST	PT-3	PT-1	PT-3	PT-3	ST	PT-2A	8'-6"	ACT-1	
C106	CORRIDOR	CPT-1	WB/ST	PT-3	PT-1	PT-3	PT-3	N/A	N/A	8'-0"	PT-7A	
C107	STAFF OFFICE	CPT-1	WB/ST	PT-3	PT-1	PT-3	PT-3	ST	PT-2A	VARIES / 8'-0"	PT-7A	2 (PT-2B), 4, 13
C108	STORAGE	CPT-1	WB/ST	PT-7A	PT-7A	PT-7A	PT-7A	ST	PT-2A	VARIES	PT-7A	
C109	JANITOR	SCONC	VB-1	PT-7A	PT-7A	PT-7A	PT-7A	ST	PT-2A	VARIES	PT-7A	5
C110	FACULTY TOILET	EXIST CT-2	CT-2	PT-3	PT-3	PT-3	PT-3	ST	PT-2A	VARIES	PT-7A	5, 11
C111	NURSE	VCT-1	WB/ST	PT-3	PT-1	PT-3	PT-3	ST	PT-2A	VARIES	PT-7A	2 (PT-2B)
C112	WOMEN'S STUDENT TOILET	SF-1	SF-1	SF-3	SF-3	SF-3	SF-3	ST	PT-2A	8'-6"	PT-7A	3
C113	MEN'S STUDENT TOILET	SF-1	SF-1	SF-3	SF-3	SF-3	SF-3	ST	PT-2A	8'-6"	PT-7A	3
C114	LIBRARY	CPT-1,2	WB/ST	PT-3	PT-1	PT-3	PT-3	ST	PT-2A	VARIES	PT-7A	2 (PT-2B), 4, 9
C115	STORAGE	CPT-1	WB/ST	PT-3	PT-3	PT-3	PT-3	ST	PT-2A	VARIES	PT-7A	
C116	CLASSROOM	CPT-1,2	WB/ST	PT-1	PT-3	PT-3	PT-3	ST	PT-2A	VARIES	PT-7A	2 (PT-2B), 4, 9
C117	CLASSROOM	CPT-1,2	WB/ST	PT-1	PT-3	PT-3	PT-3	ST	PT-2A	VARIES	PT-7A	2 (PT-2B), 4, 9
C118	CLASSROOM	CPT-1,2	WB/ST	PT-1	PT-3	PT-3	PT-3	ST	PT-2A	VARIES	PT-7A	2 (PT-2B), 4, 9
C119	MECHANICAL											NO WORK
C120	ELECTRICAL											NO WORK
C121	VISITATION	VCT-1	WB/ST	PT-1	N/A	PT-3	PT-3	N/A	N/A	VARIES	PT-7A	2 (PT-2B), 10
C122	NOT USED											
C123	STORAGE	SCONC	VB-1	PT-7A	PT-7A	PT-7A	PT-7A	PT-2B	PT-2A	VARIES	PT-7A	13
C124	JANITOR	SCONC	VB-1	PT-3	PT-3	PT-3	PT-3	PT-2B	PT-2A	VARIES	PT-7A	
C125	KITCHEN											NO WORK
C126	KITCHEN STAFF TOILET											NO WORK
C127	WALK-IN REFRIGERATOR											NO WORK
C128	WALK-IN FREEZER											NO WORK
C129	VESTIBULE											NO WORK
C130	STORAGE											NO WORK
C131	MULTI-PURPOSE ROOM	PCONC	VB-1	NO WORK	NO WORK	NO WORK	NO WORK	ST, PT-2B	PT-2A	EXP.	NO WORK	7, 8, 13
C132	CLERICAL	CPT-1, 2	WB/ST	PT-3	PT-1	PT-1	PT-3	ST	PT-2A	VARIES	PT-7A	2 (PT-2B)
C133	OFFICE	CPT-1	WB/ST	PT-3	PT-3	PT-3	PT-1	ST	PT-2A	9'-2"	ACT-1	
C134	STORAGE	CPT-1	WB/ST	PT-7A	PT-7A	PT-7A	PT-7A	ST	PT-2A	VARIES	PT-7A	
C135	OFFICE	CPT-1	WB/ST	PT-3	PT-3	PT-3	PT-1	ST	PT-2A	9'-2"	ACT-1	
C136	STORAGE	CPT-1	WB/ST	PT-7A	PT-7A	PT-7A	PT-7A	ST	PT-2A	VARIES	PT-7A	

ROOM FINISH SCHEDULE REMARKS

- SEE INTERIOR ELEVATIONS 1/A102 FOR EXTENT OF PAINT COLORS.
- PT-2B OR PT-5 AT VERTICAL DROP/ SOFFIT.
- EXISTING EPOXY FLOOR & BASE. CLEAN, REPAIR & RECOAT TO MATCH EXIST
- SEE RCP FOR PT. COLOR OF SOFFITS
- WATER RESISTANT GYP BOARD
- PAINT DOOR FRAME PT-8 AT EXTERIOR SIDE.
- PAINT DOOR PT-9 AT EXTERIOR SIDE.
- PAINT MAIN ENTRY DOOR PT-10 AT EXTERIOR SIDE.
- IMPACT RESISTANT GYP BD TO 8'-0" ABOVE (EXCEPT BEHIND CASEWORK)
- PARTIAL HEIGHT IMPACT RESISTANT GYP BD - SEE PARTITION TYPES 1.1, 3.1 & 6/A101
- EXISTING CT FLOOR TO REMAIN. CLEAN & REGROUT. PROVIDE MATCHING 4" CT BASE.
- DOOR FRAME TO BE PAINTED PT-11 ON MULTI-PURPOSE ROOM SIDE.
- EXISTING CT FLOOR TO REMAIN. CLEAN & REGROUT

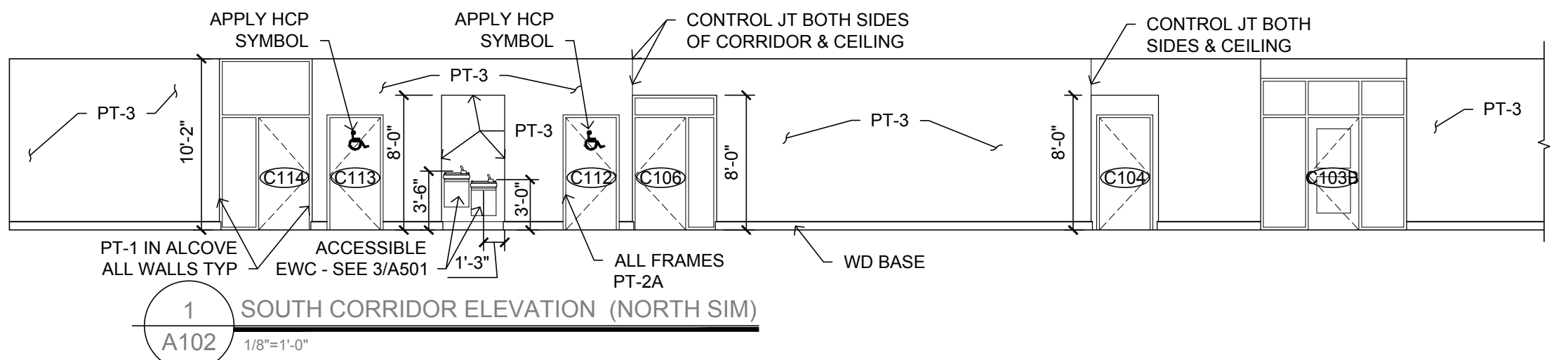
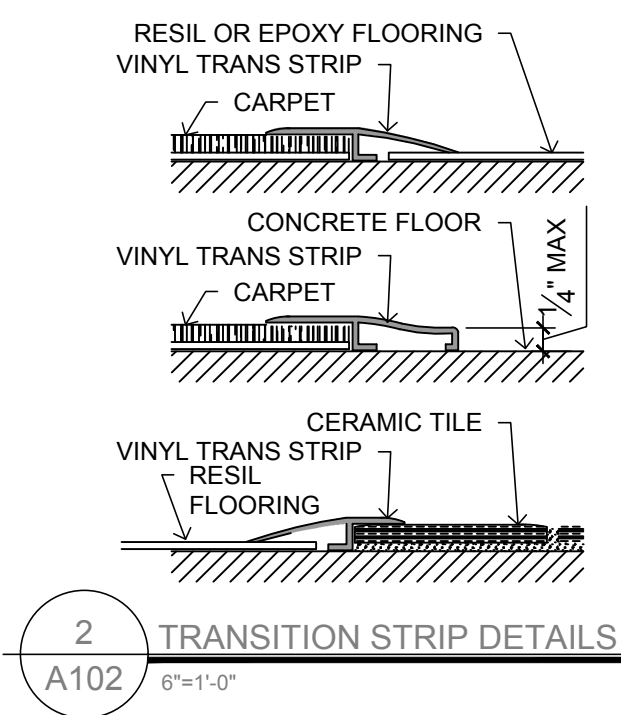
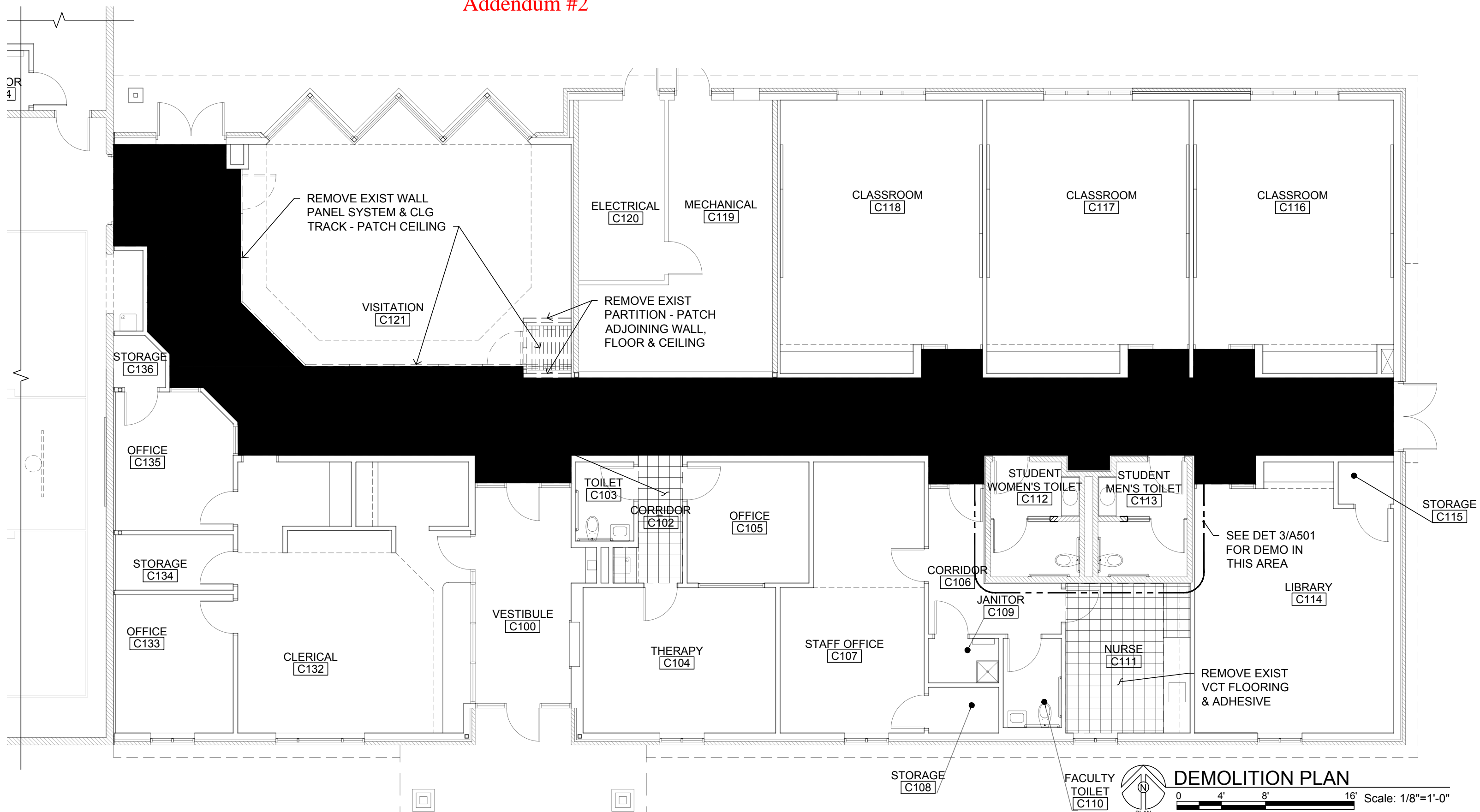
GENERAL NOTES:

- PAINT COLORS NOTED ARE FROM ORIGINAL CTHE ONSTRUCTION AND LISTED AS A GUIDE. WHERE EXIST COLORS REMAIN, REPAINTING SHALL MATCH EXISTING COLORS.
- FINISH MATERIALS, STYLES & COLORS NOTED ARE FROM THE ORIGINAL CONSTRUCTION AND LISTED AS A GUIDE. NEW FINISHES SHALL BE COMPATIBLE WITH & MATCH THOSE ORIGINALLY SPECIFIED AS CLOSLEY AS POSSIBLE AND AS APPROVED BY THE OWNER'S REP.
- EXISTING HM FRAMES: REPAINT TO MATCH EXIST.
- REPAIR ANY DAMAGED FINISH ON PREFINISHED DOORS - REFINISH AS REQD.
- WOOD BASE: SITE APPLIED CLEAR FINISH TO MATCH MANUFACTURER APPLIED CLEAR FINISH ON DOORS.
- SEE THE REFLECTED CEILING PLAN ON A-701 FOR CEILINGS RECEIVING ACOUSTICAL SPRAY.

KEY TO FINISHES

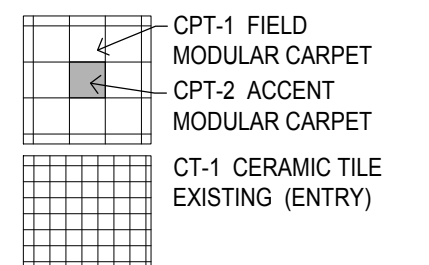
ABBREVIATION	FINISH DEFINITION	MANUFACTURER, PRODUCT NAME & COLOR MANUFACTURERS/PRODUCTS LISTED ARE "BASIS OF DESIGN"
FLOORING	CPT-1	FIELD MODULAR CARPET (CORE BLDG)
	CPT-2	ACCENT MODULAR CARPET (CORE BLDG)
	EXIST CT-1	EXISTING CERAMIC TILE (ENTRY - CORE BLDG)
	EXIST CT-2	EXISTING CERAMIC TILE (STAFF TOILETS - CORE BLDG)
	SF-1	RECOAT EXISTING SPECIAL FLOORING (CORE BLDG)
		EPOXY COMPATABLE WITH EXIST. TNESEC AY22 "Baltic Sea"
	VCT-1	VINYL COMPOSITION TILE
		ARMSTRONG LUXURY VINYL PLANK FLOORING "Woven Wicker"
	VB-1	4" VINYL BASE (CORE BLDG)
	VB-2	4" VINYL BASE (MULTI-PURPOSE ROOM)
CEILING	WB	6" X 9" WOOD BASE W/ EASED EDGE
		SEE SPECS
	SCONC	EXIST SEALED CONCRETE
	PONC	PAINTED CONCRETE
		EXISTING - NO WORK
		EPOXY COATING W/ GAME LINES PER NFHS STDS
	ACT-1	24" x 24" ACOUSTICAL CEILING TILE
		ARMSTRONG #303 BEVELED TEGULAR TUNDRA
	PT-1	ACCENT PAINT (CORE BLDG)
	PT-2A	DOOR FRAME/MISC. PAINT (CORE BLDG)
PAINTS & STAINS	PT-2B	VERTICAL DROP PAINT (CORE BLDG)
	PT-3	FIELD PAINT (CORE BLDG)
	PT-7A	CEILING PAINT (CORE BLDG)
	PT-8	DOOR FRAME PAINT AT EXTERIOR
	PT-9	DOOR PAINT AT EXTERIOR
	PT-10	DOOR PAINT AT EXTERIOR ENTRY
	PT-11	DOOR FRAME PAINT AT MULTI-PURPOSE RM
	SF-3	SPECIAL FINISH (CORE BLDG.)
		SEE SPECS
	CF	CLEAR FINISH
LAMINATE	ST	STAINED FINISH
		SHERWIN WILLIAMS STAIN CLEAR S648T
		STAIN TO MATCH (VT Industries Wd. Veneer Color Red Oak No. 8)
	PL-1	PLASTIC LAMINATE (COUNTERTOPS - CORE BLDG)
	PL-2	PLASTIC LAMINATE (BASE/SHELVES - CORE BLDG)
		NEVAMAR MR-3-11 "Blue Matrix"
		NEVAMAR S-6-477 "Sandpaper"

Addendum #2

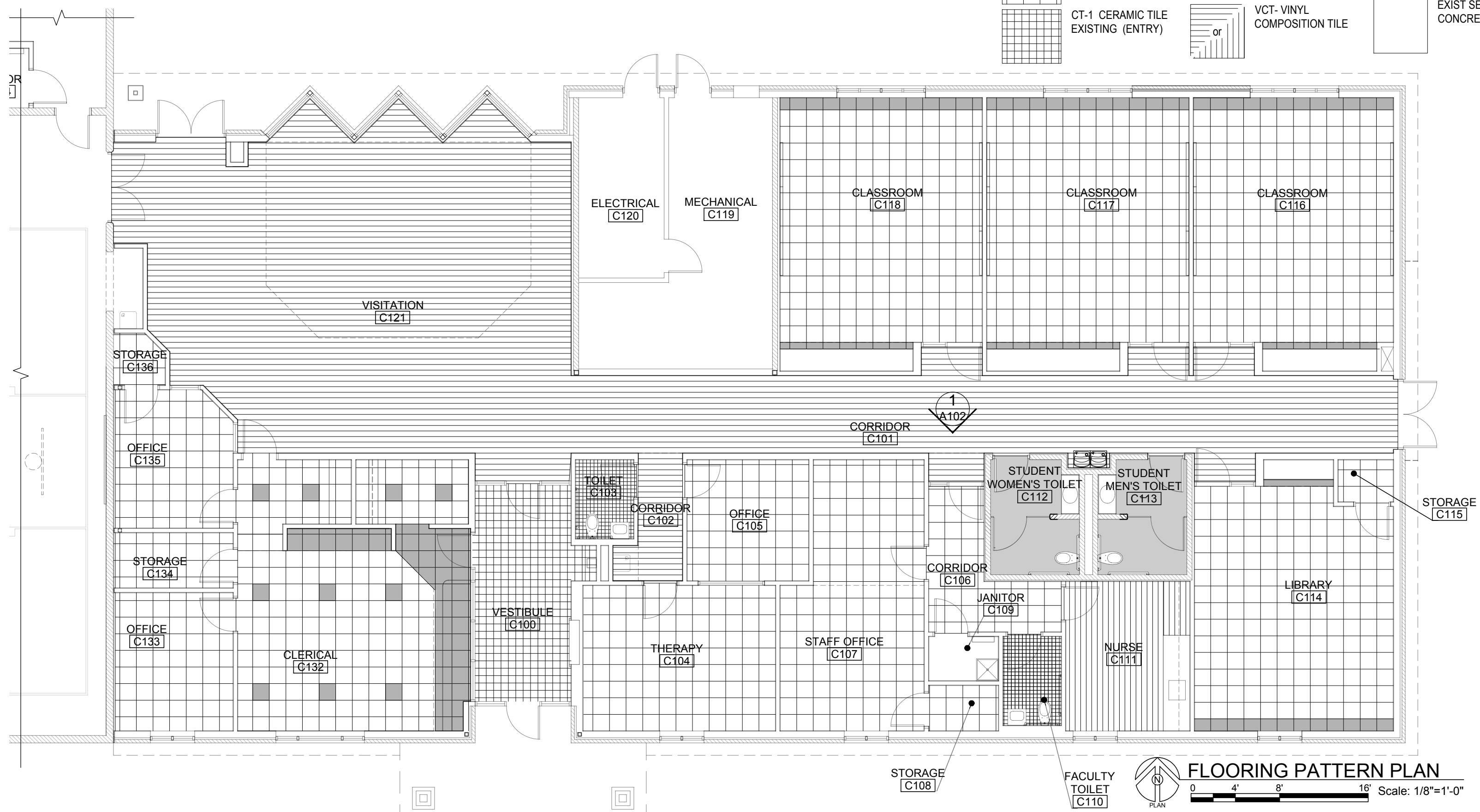


LEGEND - FLOOR FINISHES

SEE 2/A102 FOR TRANSITION DETAILS



NOTE: IF ALTERNATE #1 IS NOT ACCEPTED, EXTEND FINISH FLOORING INTO AREAS SHOWN FOR CASEWORK

STATE OF MISSOURI
MIKE KEHOE,
GOVERNOR

EXPIRES 12/31/2027



SIGNED 10/31/2025

EDM Incorporated
Engineers Architects Planners
500 N. Broadway, Suite 1200, St. Louis, MO 63102
(314) 231-5485 FAX (314) 231-8767OFFICE OF ADMINISTRATION
DIVISION OF FACILITIES
MANAGEMENT,
DESIGN AND CONSTRUCTIONDEPARTMENT OF
SOCIAL SERVICES
Division of Youth ServicesRENOVATIONS TO
INTERIOR
CORE BUILDINGHILLSBORO TREATMENT
CENTER
HILLSBORO, MISSOURIPROJECT # H2503-01
SITE # 7710
FACILITY # 88777-10003

REVISION: 1 - ADD #2

DATE: 01/29/2026

REVISION:

DATE:

REVISION:

DATE:

ISSUE DATE: 10/31/2025

CAD DWG FILE: H2503-01_7710_88777-10003_A-501

DRAWN BY: GSS

CHECKED BY: WAB

DESIGNED BY: GSS / WAB

SHEET TITLE:

FINISH SCHEDULE
FLOORING PLAN
DEMOLITION PLAN

SHEET NUMBER:

A-102

3 OF 20 SHEETS
10/31/2025