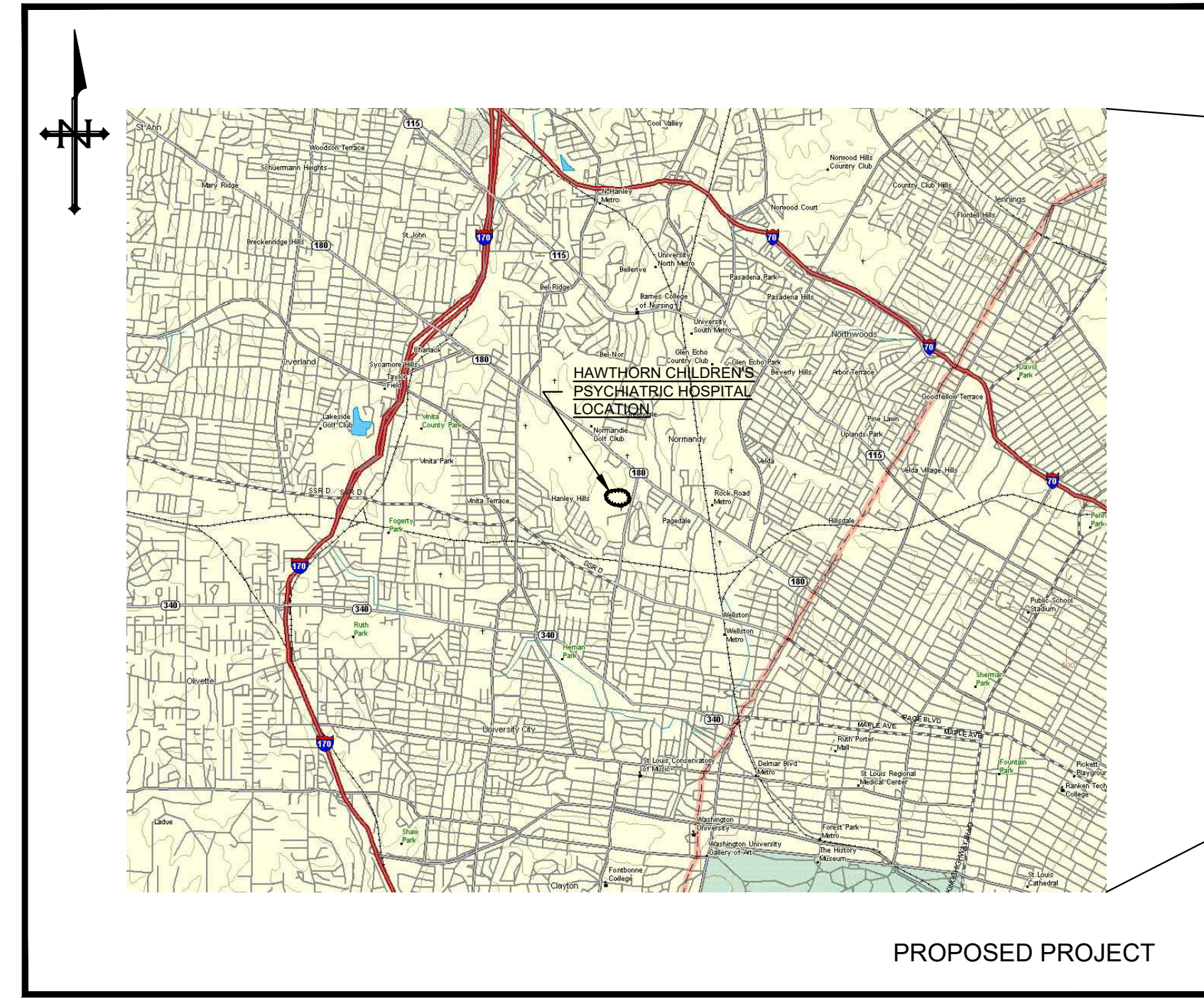
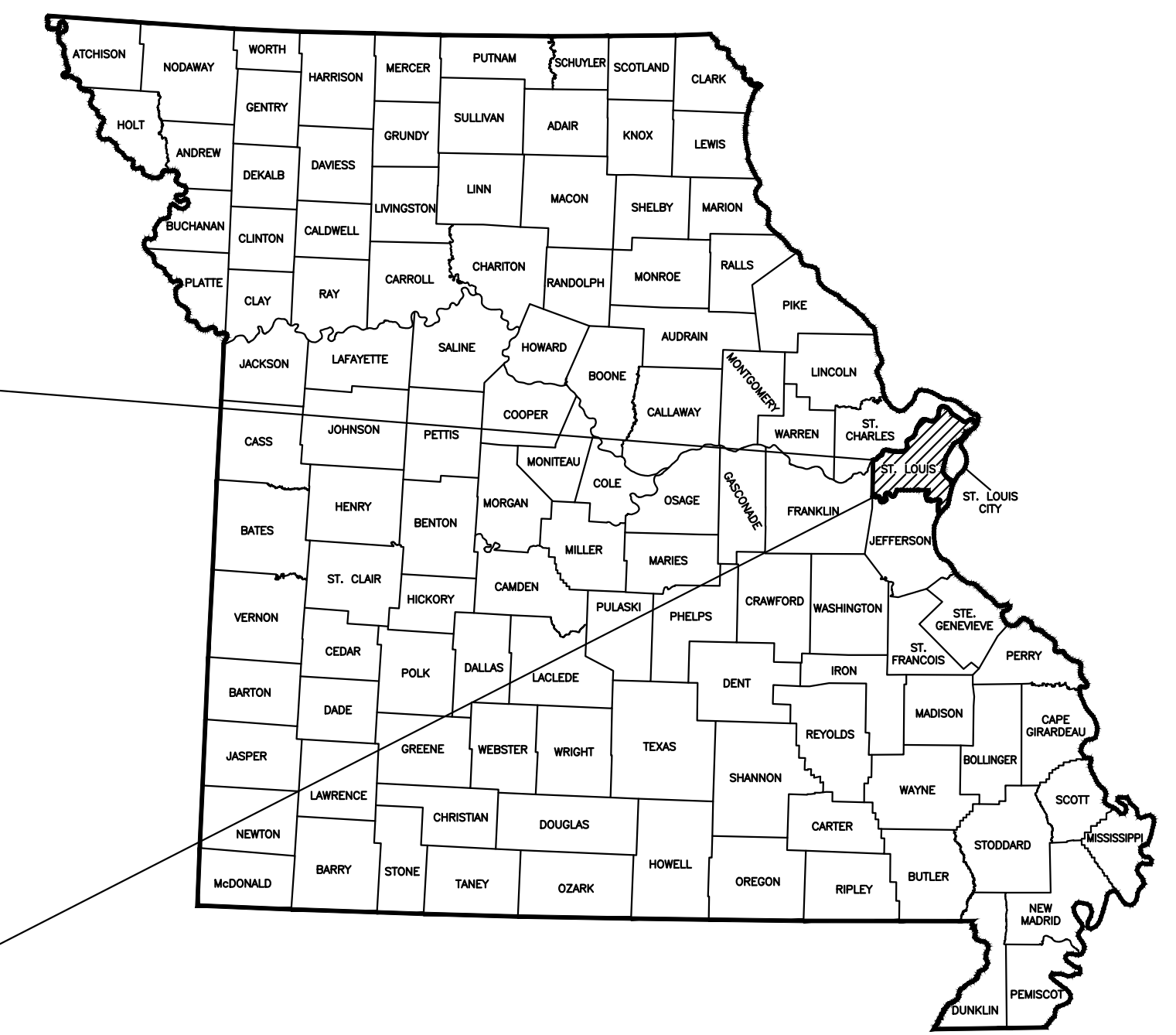


# REPLACE FIRE ALARM PANELS AND DEVICES, ADMINISTRATION BUILDING HAWTHORN CHILDREN'S PSYCHIATRIC HOSPITAL ST. LOUIS, MISSOURI

DRAWING SHEET INDEX		
SHEET	DESCRIPTION	NAME
1	COVER SHEET	G-001
2	GENERAL NOTES, ABBREVIATIONS, AND CODES	G-002
3	ADMIN. BUILDING SITE PLAN	C-101
4	ADMIN. BUILDING ELECTRICAL PLAN EAST	E-101
5	ADMIN. BUILDING ELECTRICAL PLAN WEST	E-102
6	TYPICAL COTTAGE ELECTRICAL PLAN	E-103
7	WIRING DIAGRAM	E-108
8	PARTIAL PLAN MECHANICAL EQUIPMENT ROOM	E-109



VICINITY MAP



OWNER: STATE OF MISSOURI  
MICHAEL L. PARSON, GOVERNOR

DEPARTMENT OF  
MENTAL HEALTH

PROJECT MANAGEMENT: OFFICE OF ADMINISTRATION  
DIVISION OF FACILITIES MANAGEMENT,  
DESIGN AND CONSTRUCTION

DESIGNER: HURST-ROSCHE, INC.

PROJECT NUMBER: M2414-01

SITE NUMBER: 7390  
ASSET NUMBER: 6517390002

**UNDERGROUND UTILITY NOTE**

ANY UNDERGROUND FACILITIES, STRUCTURES, OR UTILITIES THAT HAVE BEEN SHOWN ARE FROM AVAILABLE RECORDS. THEREFORE, THE RELATIONSHIP BETWEEN THE NEW WORK AND THE EXISTING FACILITIES, STRUCTURES, OR UTILITIES MUST BE CONSIDERED APPROXIMATE. IT IS THE CONTRACTOR'S RESPONSIBILITY TO NOTIFY ALL THE LOCAL, AND/OR GOVERNING UTILITY COMPANIES PRIOR TO CONSTRUCTION TO DETERMINE THEIR EXACT LOCATIONS AND THE EXISTENCE OF ANY NOT SHOWN. CONTRACTOR SHALL COORDINATE WITH UTILITY COMPANIES AND THE OWNER AS TO THE RELOCATION OR REMOVAL OF ANY UTILITIES SHOWN OR NOT SHOWN.



SIGNATURE \_\_\_\_\_  
DATE 1-10-2025  
LICENSE EXPIRES 12-31-2026  
PROFESSIONAL SEAL

Hurst-Rosche, Inc.  
PROFESSIONAL DESIGN NUMBER: 000372  
3675 W. Outer Rd., Suite 205  
Arnold, MO 63010  
636.333.3351 t  
www.hurst-rosche.com

HILLSBORO, IL  
EAST ST. LOUIS, IL  
MARION, IL  
SPRINGFIELD, IL  
NASHVILLE, TN

SHEET NUMBER:  
**G-001**  
01 OF 08 SHEETS  
JAN. 10, 2025

**ABBREVIATIONS**

ABV	ABOVE	EF	EACH FACE	JT	JOINT	RAD	RADIUS
AFF	ABOVE FINISH FLOOR	ELEC	ELECTRIC (AL)	JF	JOINT FILLER	RAN	RANGE
ACC	ACCESS	EP	ELECTRICAL PANELBOARD	J	JOIST	RL	RAIL (ING)
AP	ACCESS PANEL	EL	ELEVATION			RE	REFERENCE
AC	ACOUSTICAL	ENC	ENCLOSE (URE)	KPL	KICKPLATE	REF	REFRIDGERATOR
ACT	ACOUSTICAL CEILING TILE	EQ	EQUAL			RFL	
ADH	ADHESIVE	EQP	EQUIPMENT	LBL	LABEL	REINF	REINFORCE (D), (ING)
ADJ	ADJACENT	EST	ESTIMATE	LBP	LEAD-BASED PAINT	REM	REMOVE
ADJT	ADJUSTABLE	EXH	EXHAUST	LAM	LAMINATE (D)	RES	RESILIENT
ALT	ALTERNATE, ALTERNATIVE	EXG	EXISTING	LAV	LAVATORY	RA	RETURN AIR
AL	ALUMINUM	EJ	EXPANSION JOINT	LH	LEFT HAND	RVS	REVERSE (SIDE)
ANC	ANCHOR, ANCHORAGE	EXP	EXPOSED	L	LENGTH	REV	
AB	ANCHOR BOLT	EXT	EXTERIOR	LT	LIGHT	RH	RIGHT HAND
ARCH	ARCHITECT (URAL)	EWF	ELECTRIC WATER FOUNTAIN	LW	LIGHTWEIGHT	RFG	ROOFING
AD	AREA DRAIN			LF	LINEAL FEET	RM	ROOM
ASPH	ASPHALT			LTL	LINTEL	RO	ROUGH OPENING
AUTO	AUTOMATIC			LL	LIVE LOAD	RB	RUBBER BASE
		FOC	FACE OF CONCRETE	LVR	LOUVER		
		FOF	FACE OF FINISH	LPT	LOW POINT		
		FOM	FACE OF MASONRY			SCH	SCHEDULE
BRG	BEARING	FOS	FACE OF STUDS			S	SEALER
BPL	BEARING PLATE	FAS	FASTEN, FASTENER	MFR	MANUFACTURE (ER)	SEC	SECTION
BM	BENCH MARK, BEAM	FBD	FIBERBOARD	MAS	MASONRY	SHTG	SHEATHING
BEL	BELOW	FGL	FIBERGLASS	MO	MASONRY OPENING	SHT	SHEET
BTWN	BETWEEN	FIN	FINISH (ED)	MAX	MAXIMUM	SH	SHELF, SHELVING
BVL	BEVELED	FFE	FINISHED FLOOR ELEVATION	MECH	MECHANICAL	SIM	SIMILAR
BLK	BLOCK	FFL	FINISHED FLOOR LINE	MED	MEDIUM	SL	SLEEVE
BLKG	BLOCKING	FA	FIRE ALARM	MBR	MEMBER	SC	SOLID CORE
BD	BOARD	FE	FIRE EXTINGUISHER	MMB	MEMBRANE	SPL	SPECIAL
BS	BOTH SIDES	FEC	FIRE EXTINGUISHER CABINET	MTL	METAL	SPEC	SPECIFICATIONS
BW	BOTH WAYS	FPL	FIREPLACE	MWK	MILLWORK	SQ	SQUARE
BOT	BOTTOM	FP	FIREPROOF	MIN	MINIMUM	SF	SQUARE FOOT
BLDG	BUILDING	FRT	FIRE-RETARDANT	MISC	MISCELLANEOUS	SY	SQUARE YARD
BL	BRICK LEDGE	FLG	FLASHING	MLD	MOLDING, MOULDING	S&V	
		FLX	FLEXIBLE	MT	MOUNT (ED), (ING)	SST	STAINLESS STEEL
CAB	CABINET	FLR	FLOOR (ING)	MOV	MOVABLE	STD	STANDARD
CPT	CARPET (ED)	FD	FLOOR DRAIN	MULL	MULLION	STL	STEEL
CSMT	CASEMENT	FPL	FLOOR PLATE			STO	STORAGE
CK	CAULKING	FLUR	FLUORESCENT	NAT	NATURAL	STRUCT	STRUCTURAL
CLG	CEILING	FJT	FLUSH JOINT	NOM	NOMINAL	SYM	SYMMETRY (ICAL)
CEM	CEMENT	FTG	FOOTING	NIC	NOT IN CONTRACT	SYS	SYSTEM
CT	CERAMIC TILE	FND	FOUNDATION	NTS	NOT TO SCALE		
CIR	CIRCLE	FR	FRAME (D), (ING)			TEL	TELEPHONE
CLR	CLEAR (ANCE)	FS	FULL SIZE	OC	ON CENTER	TV	TELEVISION
CLS	CLOSURE	FBO	FURNISHED BY OTHERS	OPG	OPENING	THK	THICK (NESS)
COL	COLUMN	FUR	FURRED (ING)	OPP	OPPOSITE	THR	THRESHOLD
COMB	COMBINATION	GA	GAGE, GAUGE	OD	OUTSIDE DIAMETER	TOL	TOLERANCE
COMP	COMPRESS (ED), (ION), (IBLE)	GALV	GALVANIZED	OA	OVERALL	T&G	
CONC	CONCRETE	GC	GENERAL CONTRACT (OR)	OH	OVERHEAD	T.STL	TOP OF STEEL
CMU	CONCRETE MASONRY UNIT	GLF	GLASS FIBER			TSL	TOP OF SLAB
CONST	CONSTRUCTION	GB	GRAB BAR	P	PAINT (ED)	TFTG	TOP OF FOOTING
CONT	CONTINUOUS	GR	GRADE, GRADING	PNL	PANEL	TYP	TYPICAL
CONTR	CONTRACT (OR)	GVL	GRAVEL	PAR	PARALLEL		
CJ	CONTROL JOINT	GRT	GROUT	PK	PARKING	UC	UNDERCUT
CPR	COPPER	GYP BD	GYP SUM BOARD	PTN	PARTITION	UNF	UNFINISHED
CG	CORNER GUARD			PERF	PERFORATE (D)	VJ	V-JOINT (ED)
CTR	CENTER	HDW	HARDWARE	PERI	PERIMETER	VB	VAPOR BARRIER
CFI	COUNTERFLASHING	HWD	HARDWOOD	PLAS	PLASTER	VAR	VARNISH
CS	COUNTERSINK	HDR	HEADER	PLAM	PLASTIC LAMINATE	VNR	VENEER
CF	CUBIC FOOT	HTG	HEATING	PL	PLATE	VERT	VERTICAL
CY	CUBIC YARD	HD	HEAVY DUTY	PWD	PLYWOOD		
		HT	HEIGHT	PT	POINT	WP	WATERPROOFING
DL	DEAD LOAD	HC	HOLLOW CORE	PORC.	PORCELAIN	WR	WATER REPELLENT
DEM	DEMOLISH, DEMOLITION	HM	HOLLOW METAL	PVC	POLYVINYL CHLORIDE	WS	WATERSTOP
DTL	DETAIL	HORIZ	HORIZONTAL	PCF	POUNDS PER CUBIC FOOT	WWF	
DIAM	DIAMETER	HB	HOSE BIB	PLF	POUNDS PER LINEAL FOOT	W	WIDTH, WIDE
DIM	DIMENSION	HWH	HOT WATER HEATER	PSF	POUNDS PER SQUARE FOOT	W/	WITH
DIV	DIVISION			PSI	POUNDS PER SQUARE INCH	WDW	WINDOW
DR	DOOR	INCL	INCLUDING	PFB	PREFABRICATE (D)	W/O	WITHOUT
DBL	DOUBLE	ID	INSIDE DIAMETER	PFN	PREFINISHED	WD	WOOD
DH	DOUBLE HUNG	IF	INSIDE FACE	PRF	PREFORMED	WB	WOOD BASE
DWL	DOWEL(S)	INS	INSULATE (D), (ION)	PL	PROPERTY LINE		
DS	DOWNSPOUT	INT	INTERIOR				
DT	DRAIN TILE						
DWR	DRAWER						
DWG	DRAWING						

**GENERAL NOTES:**

- CONTRACTOR SHALL COORDINATE ALL WORK WITH THE OWNER, ARCHITECT/ENGINEER, AND OTHER TRADES/CONTRACTORS THROUGHOUT THE COURSE OF THE PROJECT.
- CONTRACTOR SHALL COORDINATE WITH THE OWNER FOR ALL OWNER RELATED SCHEDULES, PROCEDURES, CLEARANCES & REQUIREMENTS TO ACCESS THE OWNER'S FACILITIES. SUCH PROCEDURES ARE INCIDENTAL TO THE CONTRACT AND SHALL NOT RESULT IN EXTRA COSTS TO THE OWNER.
- THE CONTRACTOR SHALL COORDINATE ALL WORK WITH THE OWNER PRIOR TO STARTING WORK.
- THE CONTRACTOR SHALL TAKE NOTE OF ALL EXISTING SITE CONDITIONS AND BE PREPARED TO MOVE OR DISPOSE OF OBJECTS OR MATERIALS WITHIN THE LIMITS OF THE PROJECT. SUCH WORK SHALL NOT BE CAUSE FOR ADDITIONAL COMPENSATION FOR A CHANGE IN THE SCOPE.
- CONTRACTOR SHALL FIELD VERIFY ALL EXISTING DIMENSIONS AND CONDITIONS AND MAKE MINOR ADJUSTMENTS AS NECESSARY. NOTIFY THE ARCHITECT/ENGINEER OF ANY DISCREPANCIES WHICH MAY AFFECT THE OUTCOME OF THE WORK. DIMENSIONS SHOWN ARE FROM FACE OF FINISH TO FACE OF FINISH UNLESS NOTED OTHERWISE.
- DIMENSIONS AND QUANTITIES NOTED ON DRAWINGS ARE FOR GENERAL INFORMATION ONLY. PRIOR TO SUBMITTING A BID PROPOSAL, THE CONTRACTOR SHALL THOROUGHLY SURVEY THE EXISTING SITE TO VERIFY EXISTING DIMENSIONS, CONDITIONS, AND DETERMINE ALL MATERIALS, LABOR, AND INCIDENTALS NEEDED FOR COMPLETION OF THE INTENDED CONSTRUCTION. THE CONTRACTOR SHALL VERIFY ALL EXISTING DIMENSIONS AND FIELD CONDITIONS PRIOR TO FABRICATION OR CONSTRUCTION; MAKE MINOR ADJUSTMENTS; AND NOTIFY THE ARCHITECT/ENGINEER OF ANY CONDITIONS THAT MAY AFFECT THE OUTCOME OF THE WORK.
- AFTER ALL WORK IS COMPLETED, CONTRACTOR SHALL CLEAN WORK AREAS SO THAT THEY ARE FREE OF ANY CONSTRUCTION MATERIALS, TOOL, DIRT AND DEBRIS. FINE GRADE, FERTILIZE, SEED AND STRAW ALL DISTURBED LAWN AREAS.
- EXISTING SITE IMPROVEMENTS DISTURBED OUTSIDE THE DESIGNATED CONSTRUCTION AREAS ARE TO BE REPLACED WITH EQUAL OR BETTER CONSTRUCTION AT THE EXPENSE OF THE CONTRACTOR. EVERY EFFORT SHALL BE MADE TO MINIMIZE SUCH DISTURBANCES.
- INFORMATION NOTED ON DRAWINGS ARE FOR GENERAL INFORMATION ONLY. CONTRACTOR SHALL BE RESPONSIBLE FOR THE ENTIRE LAYOUT OF THE SITES AND ALL LOCATION AND DEPTHS OF EXISTING UTILITIES/COMMUNICATION LINES AND REQUIRED CLEARANCES VERTICAL/HORIZONTAL. CONTRACTOR SHALL MAKE ADJUSTMENTS TO ENSURE PROPER INSTALLATION OF REQUIRED WORK AT NO EXTRA COST TO THE OWNER.
- EXISTING SITE VEGETATION AND CONSTRUCTION, SUCH AS SIDEWALKS, STOOPS, ETC., THAT ARE DISTURBED AND/OR DAMAGED DURING CONSTRUCTION SHALL BE REPLACED WITH EQUAL OR BETTER CONSTRUCTION AT THE EXPENSE OF THE CONTRACTOR. EVERY EFFORT SHALL BE MADE TO MINIMIZE SUCH DISTURBANCES AND DAMAGES.
- ALL ITEMS NOTED TO REMAIN SHALL NOT BE DISTURBED AND SHALL REMAIN IN PLACE. CONTRACTOR SHALL MAKE EVERY EFFORT TO MINIMIZE ANY DISTURBANCES. IN THE EVENT EXISTING ITEMS ARE DISTURBED, CONTRACTOR SHALL REPAIR/REPLACE WITH EQUAL OR BETTER CONSTRUCTION AT THE CONTRACTOR'S EXPENSE.
- PRIME CONTRACTOR FOR EACH BID SHALL COORDINATE REMOVAL, HAULING, AND LEGAL DISPOSAL OF ALL MATERIALS WITH SUBCONTRACTORS.
- CONTRACTOR SHALL MAINTAIN PROJECT SITE FREE FROM CONSTRUCTION DEBRIS AS REQUIRED BY THE OWNER. COORDINATE WITH THE OWNER.
- ALL REFUSE AND DEBRIS SHALL BE REMOVED FROM THE SITE AND LEGALLY DISPOSED OF BY THE CONTRACTOR. GENERAL CONTRACTOR SHALL COORDINATE REMOVAL, HAULING, AND LEGAL DISPOSAL OF ALL MATERIALS WITH SUBCONTRACTORS. CLEAN ALL WORK AREAS DAILY.
- AFTER ALL WORK IS COMPLETED, CONTRACTOR SHALL CLEAN ALL AREAS AFFECTED BY CONSTRUCTION SO THAT THEY ARE FREE OF ANY CONSTRUCTION DIRT AND DEBRIS.
- GRADE, SEED AND STRAW ANY SITE AREAS DISTURBED BY CONSTRUCTION OF THIS PROJECT IN ANY WAY.
- NEW WORK SHALL MATCH EXISTING ADJOINING CONSTRUCTION FOR A SMOOTH TRANSITION, EXCEPT WHERE NOTED.
- PROTECT EXISTING UTILITIES DURING CONSTRUCTION.
- CONTRACTOR SHALL NOTIFY OWNER AND ARCHITECT/ENGINEER PRIOR TO USE OF ANY SCAFFOLDING, LIFTS, SWING STAGES, ETC. USE OF SUCH MATERIALS AND EQUIPMENT SHALL MEET ALL FEDERAL, STATE, AND LOCAL SAFETY REGULATIONS AND ORDINANCES.
- CONTRACTOR SHALL BE RESPONSIBLE FOR ALL BUILDING/WORK PERMITS AND CERTIFICATION REQUIREMENTS. SUBMIT COPIES OF ALL PERMITS/CERTIFICATIONS TO THE ARCHITECT/ENGINEER AND OWNER.
- RECONNECT ALL ITEMS THAT WERE DISCONNECTED DURING CONSTRUCTION. ENSURE ALL CONNECTIONS ARE SAFE AND WEATHER-TIGHT.
- ALL WORK PERFORMED & MATERIALS INSTALLED SHALL BE IN STRICT ACCORDANCE W/ ALL APPLICABLE CODES, REGULATIONS AND ORDINANCES. CONTRACTOR SHALL COMPLY WITH ALL LAWS, ORDINANCES, RULES, REGULATIONS AND LAWFUL ORDERS OF ANY PUBLIC AUTHORITY BEARING ON THE PERFORMANCE OF THE WORK. MECHANICAL AND ELECTRICAL SYSTEMS SHALL BE INSTALLED IN ACCORDANCE WITH ALL APPLICABLE MUNICIPAL AND UTILITY COMPANY SPECIFICATIONS, AND LOCAL OR STATED JURISDICTIONAL CODES, ORDINANCES AND REGULATIONS.
- THE TERM ARCHITECT, ENGINEER OR CONSULTANT ARE ALL SYNONYMOUS WITH THE TERM DESIGNER.
- IF DISCREPANCY ARISES BETWEEN INFORMATION IN THE SPECIFICATIONS AND THE INFORMATION ON THE DRAWINGS, THE MORE STRINGENT CONDITION SHALL APPLY.

**CODES ADOPTED BY ST. LOUIS COUNTY:**

- INTERNATIONAL BUILDING CODE (IBC), 2015 EDITION, AS PUBLISHED BY THE ICC;
- NATIONAL ELECTRIC CODE (NEC), 2014 EDITION;
- INTERNATIONAL EXISTING BUILDING CODE (IEBC), 2015 EDITION, AS PUBLISHED BY THE ICC;
- INTERNATIONAL RESIDENTIAL CODE (IRC) FOR ONE- AND TWO-FAMILY DWELLINGS, 2015 EDITION, AS PUBLISHED BY THE ICC;
- INTERNATIONAL MECHANICAL CODE (IMC), 2015 EDITION, AS PUBLISHED BY THE ICC;
- INTERNATIONAL FUEL GAS CODE, 2015 EDITION (IMC), AS PUBLISHED BY THE ICC;
- INTERNATIONAL ENERGY CONSERVATION CODE (IECC/IMC), 2015 EDITION, AS PUBLISHED BY THE ICC;
- INTERNATIONAL PROPERTY MAINTENANCE CODE (IPMC), 2015 EDITION, AS PUBLISHED BY THE ICC;
- INTERNATIONAL FIRE CODE (IFC), 2015 EDITION, AS PUBLISHED BY THE ICC;
- UPC PLUMBING CODE (UPC), 2015 EDITION, AS PUBLISHED BY THE IAPMO.

STATE OF MISSOURI  
MICHAEL L. PARSON,  
GOVERNOR



SIGNATURE \_\_\_\_\_  
DATE 01-10-2025  
LICENSE EXPIRES 12-31-2026

PROFESSIONAL SEAL



Hurst-Rosche, Inc.  
PROFESSIONAL DESIGN NUMBER: 000372  
3675 W. Outer Road, Suite 205  
Arnold, MO 63010  
636.333.3351 t  
www.hurst-rosche.com

HILLSBORO, IL  
EAST ST. LOUIS, IL  
MARION, IL  
SPRINGFIELD, IL  
NASHVILLE, TN

OFFICE OF ADMINISTRATION  
DIVISION OF FACILITIES  
MANAGEMENT,  
DESIGN AND CONSTRUCTION

DEPARTMENT OF  
MENTAL HEALTH

REPLACE FIRE ALARM PANELS  
AND DEVICES,  
ADMINISTRATION BUILDING  
HAWTHORN CHILDREN'S  
PSYCHIATRIC HOSPITAL

1901 PENNSYLVANIA AVENUE  
ST. LOUIS, MISSOURI 63133

PROJECT # M2414-01  
SITE # 7390  
ASSET # 6517390002

REVISION: \_\_\_\_\_  
DATE: \_\_\_\_\_  
REVISION: \_\_\_\_\_  
DATE: \_\_\_\_\_  
REVISION: \_\_\_\_\_  
DATE: \_\_\_\_\_  
ISSUE DATE: JAN. 10, 2025

CAD DWG FILE: G-002.DWG  
DRAWN BY: AJD/JSM  
CHECKED BY: JCZ  
DESIGNED BY: JCZ

SHEET TITLE:

GENERAL NOTES,  
ABBREVIATIONS,  
AND CODES

SHEET NUMBER:

G-002

02 OF 08 SHEETS  
JAN. 10, 2025



SIGNATURE \_\_\_\_\_  
DATE 01-10-2025  
LICENSE EXPIRES 12-31-2026

PROFESSIONAL SEAL



Hurst-Rosche, Inc.  
PROFESSIONAL DESIGN NUMBER: 000372  
3675 W. Outer Road, Suite 205  
Arnold, MO 63010  
636.333.3351 t  
www.hurst-rosche.com

HILLSBORO, IL  
EAST ST. LOUIS, IL  
MARION, IL  
SPRINGFIELD, IL  
NASHVILLE, TN

OFFICE OF ADMINISTRATION  
DIVISION OF FACILITIES  
MANAGEMENT,  
DESIGN AND CONSTRUCTION

DEPARTMENT OF  
MENTAL HEALTH

REPLACE FIRE ALARM PANELS  
AND DEVICES,  
ADMINISTRATION BUILDING  
HAWTHORN CHILDREN'S  
PSYCHIATRIC HOSPITAL

1901 PENNSYLVANIA AVENUE  
ST. LOUIS, MISSOURI 63133

PROJECT # M2414-01  
SITE # 7390  
ASSET # 6517390002

REVISION: \_\_\_\_\_  
DATE: \_\_\_\_\_  
REVISION: \_\_\_\_\_  
DATE: \_\_\_\_\_  
REVISION: \_\_\_\_\_  
DATE: \_\_\_\_\_  
ISSUE DATE: JAN. 10, 2025

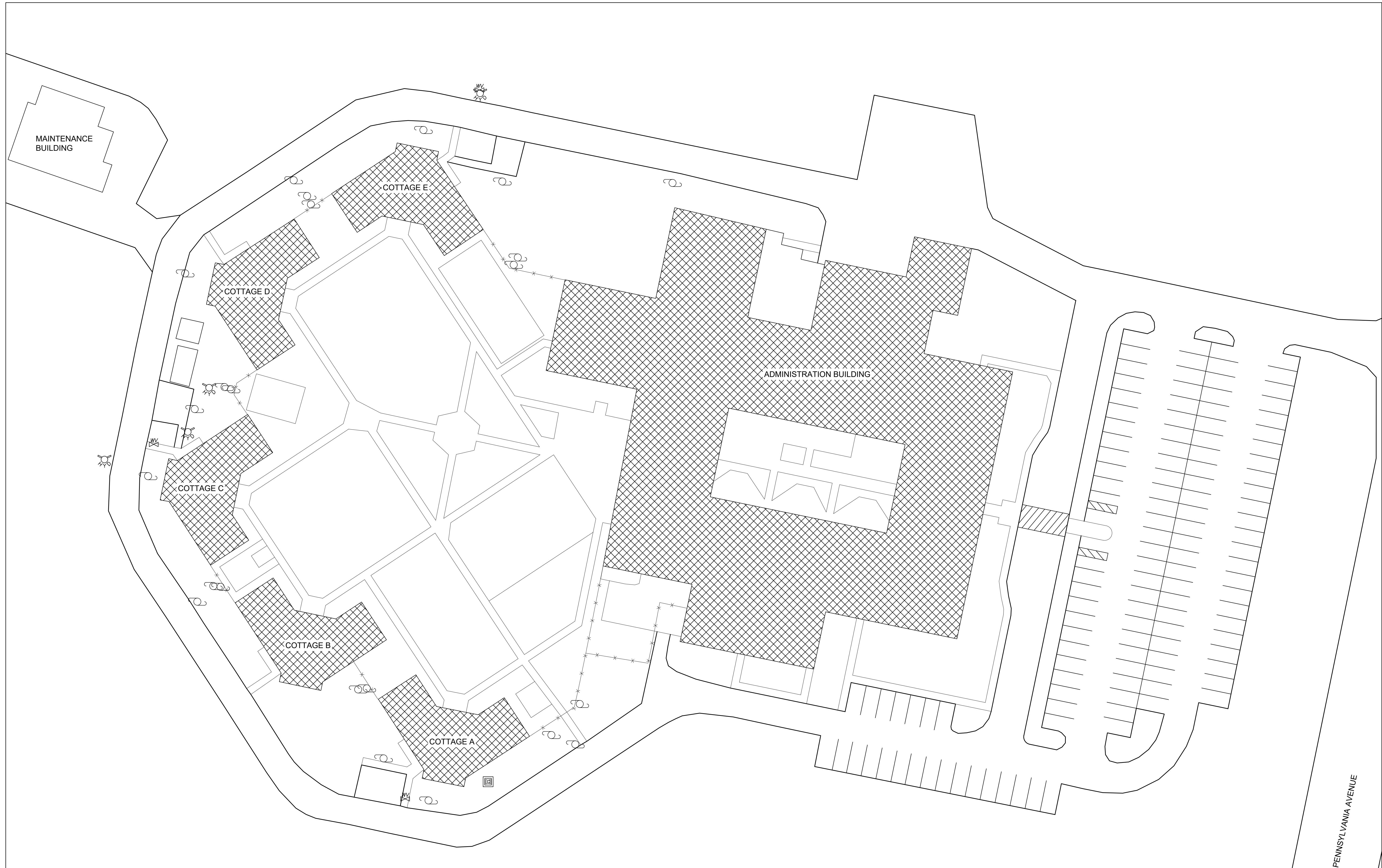
CAD DWG FILE: C-101.DWG  
DRAWN BY: AJD/JSM  
CHECKED BY: JCZ  
DESIGNED BY: JCZ

SHEET TITLE:  
**ADMINISTRATION  
BUILDING  
SITE PLAN**

SHEET NUMBER:

**C-101**

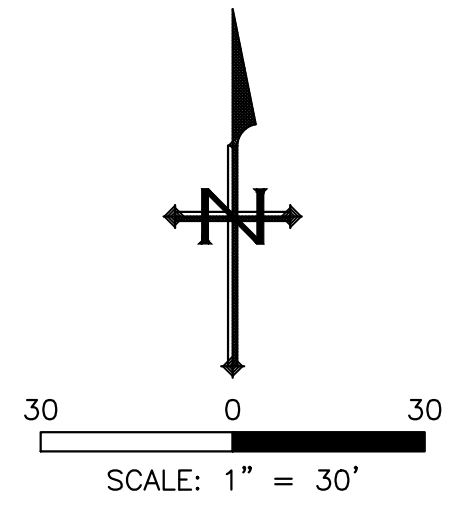
03 OF 08 SHEETS  
JAN. 10, 2025



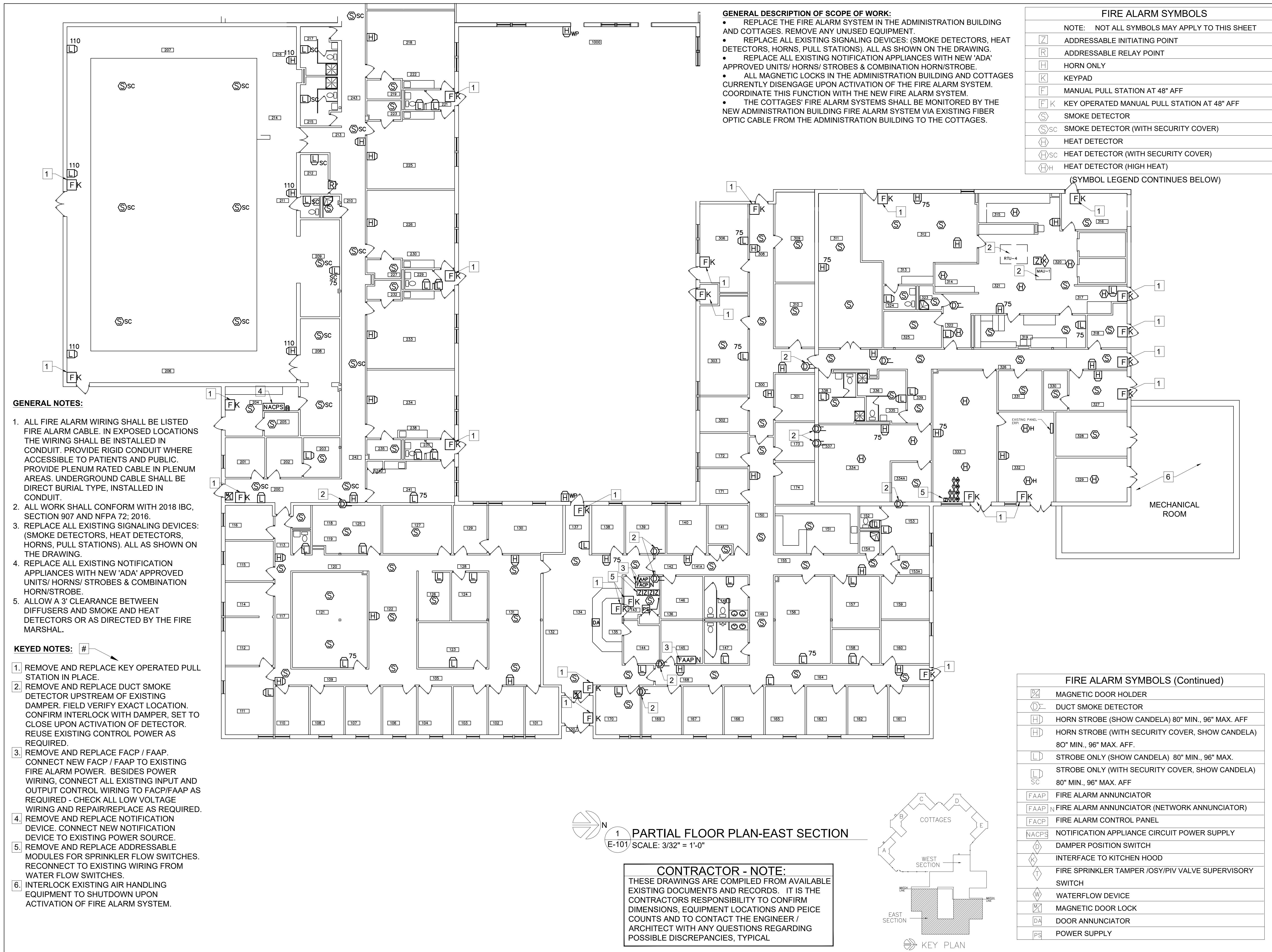
**UNDERGROUND UTILITY NOTE**  
ANY UNDERGROUND FACILITIES, STRUCTURES, OR UTILITIES THAT HAVE BEEN PLOTTED AND SHOWN FROM AVAILABLE INFORMATION AND RECORDS. THEREFORE, THEIR LOCATION AND RELATIONSHIP TO NEW PROPOSED WORK MUST BE CONSIDERED APPROXIMATE ONLY. THE VERIFICATION OF THE LOCATION OF UNDERGROUND FACILITIES, STRUCTURES AND UTILITIES, EITHER SHOWN OR NOT SHOWN ON THE PLANS, SHALL BE THE RESPONSIBILITY OF THE CONTRACTOR AND SHALL BE LOCATED PRIOR TO ANY WORK. IT IS THE CONTRACTOR'S RESPONSIBILITY TO NOTIFY ALL THE LOCAL GOVERNING AGENCIES AND UTILITY COMPANIES PRIOR TO CONSTRUCTION TO DETERMINE THEIR UNDERGROUND FACILITIES, STRUCTURES AND UTILITIES EXACT LOCATION AND THE EXISTENCE OF ANY NOT SHOWN. CONTRACTOR SHALL COORDINATE WITH UTILITY COMPANIES AND THE OWNER AS TO THE RELOCATION OR REMOVAL OF ANY UTILITIES SHOWN OR NOT SHOWN. THE ENGINEER/ARCHITECT AND THE OWNER DO NOT WARRANT OR GUARANTEE THE COMPLETENESS OR THE CORRECTNESS OF THE INFORMATION GIVEN.



LEGEND	
WATER VALVE	
WATER HYDRANT	
WORK AREA	



PENNSYLVANIA AVENUE



**GENERAL DESCRIPTION OF SCOPE OF WORK:**

- REPLACE THE FIRE ALARM SYSTEM IN THE ADMINISTRATION BUILDING AND COTTAGES. REMOVE ANY UNUSED EQUIPMENT.
- REPLACE ALL EXISTING SIGNALING DEVICES: (SMOKE DETECTORS, HEAT DETECTORS, HORNS, PULL STATIONS). ALL AS SHOWN ON THE DRAWING.
- REPLACE ALL EXISTING NOTIFICATION APPLIANCES WITH NEW 'ADA' APPROVED UNITS/ HORNS/ STROBES & COMBINATION HORN/STROBE.
- ALL MAGNETIC LOCKS IN THE ADMINISTRATION BUILDING AND COTTAGES CURRENTLY DISENGAGE UPON ACTIVATION OF THE FIRE ALARM SYSTEM. COORDINATE THIS FUNCTION WITH THE NEW FIRE ALARM SYSTEM.
- THE COTTAGES' FIRE ALARM SYSTEMS SHALL BE MONITORED BY THE NEW ADMINISTRATION BUILDING FIRE ALARM SYSTEM VIA EXISTING FIBER OPTIC CABLE FROM THE ADMINISTRATION BUILDING TO THE COTTAGES.

FIRE ALARM SYMBOLS	
NOTE: NOT ALL SYMBOLS MAY APPLY TO THIS SHEET	
[Z]	ADDRESSABLE INITIATING POINT
[R]	ADDRESSABLE RELAY POINT
[H]	HORN ONLY
[K]	KEYPAD
[F]	MANUAL PULL STATION AT 48" AFF
[FK]	KEY OPERATED MANUAL PULL STATION AT 48" AFF
[S]	SMOKE DETECTOR
[Sc]	SMOKE DETECTOR (WITH SECURITY COVER)
[H]	HEAT DETECTOR
[Hsc]	HEAT DETECTOR (WITH SECURITY COVER)
[HH]	HEAT DETECTOR (HIGH HEAT)

(SYMBOL LEGEND CONTINUES BELOW)

**GENERAL NOTES:**

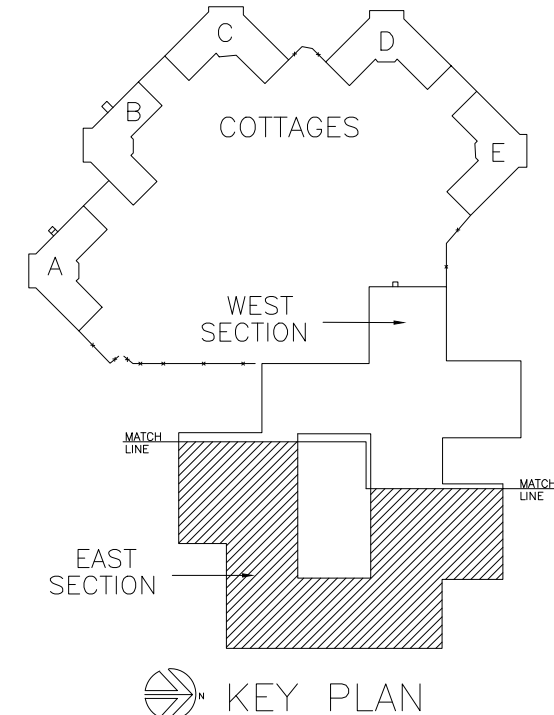
- ALL FIRE ALARM WIRING SHALL BE LISTED FIRE ALARM CABLE. IN EXPOSED LOCATIONS THE WIRING SHALL BE INSTALLED IN CONDUIT. PROVIDE RIGID CONDUIT WHERE ACCESSIBLE TO PATIENTS AND PUBLIC. PROVIDE PLENUM RATED CABLE IN PLENUM AREAS. UNDERGROUND CABLE SHALL BE DIRECT BURIAL TYPE, INSTALLED IN CONDUIT.
- ALL WORK SHALL CONFORM WITH 2018 IBC, SECTION 907 AND NFPA 72: 2016.
- REPLACE ALL EXISTING SIGNALING DEVICES: (SMOKE DETECTORS, HEAT DETECTORS, HORNS, PULL STATIONS). ALL AS SHOWN ON THE DRAWING.
- REPLACE ALL EXISTING NOTIFICATION APPLIANCES WITH NEW 'ADA' APPROVED UNITS/ HORNS/ STROBES & COMBINATION HORN/STROBE.
- ALLOW A 3' CLEARANCE BETWEEN DIFFUSERS AND SMOKE AND HEAT DETECTORS OR AS DIRECTED BY THE FIRE MARSHAL.

**KEYED NOTES:**

- REMOVE AND REPLACE KEY OPERATED PULL STATION IN PLACE.
- REMOVE AND REPLACE DUCT SMOKE DETECTOR UPSTREAM OF EXISTING DAMPER. FIELD VERIFY EXACT LOCATION. CONFIRM INTERLOCK WITH DAMPER. SET TO CLOSE UPON ACTIVATION OF DETECTOR. REUSE EXISTING CONTROL POWER AS REQUIRED.
- REMOVE AND REPLACE FAACP / FAAP. CONNECT NEW FAACP / FAAP TO EXISTING FIRE ALARM POWER. BESIDES POWER WIRING, CONNECT ALL EXISTING INPUT AND OUTPUT CONTROL WIRING TO FAACP/FAAP AS REQUIRED - CHECK ALL LOW VOLTAGE WIRING AND REPAIR/REPLACE AS REQUIRED.
- REMOVE AND REPLACE NOTIFICATION DEVICE. CONNECT NEW NOTIFICATION DEVICE TO EXISTING POWER SOURCE.
- REMOVE AND REPLACE ADDRESSABLE MODULES FOR SPRINKLER FLOW SWITCHES. RECONNECT TO EXISTING WIRING FROM WATER FLOW SWITCHES.
- INTERLOCK EXISTING AIR HANDLING EQUIPMENT TO SHUTDOWN UPON ACTIVATION OF FIRE ALARM SYSTEM.

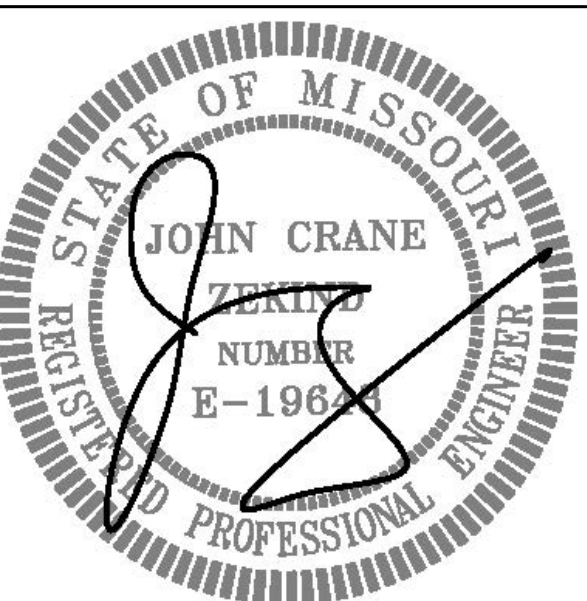
1 PARTIAL FLOOR PLAN-EAST SECTION  
E-101 SCALE: 3/32" = 1'-0"

**CONTRACTOR - NOTE:**  
THESE DRAWINGS ARE COMPILED FROM AVAILABLE EXISTING DOCUMENTS AND RECORDS. IT IS THE CONTRACTORS RESPONSIBILITY TO CONFIRM DIMENSIONS, EQUIPMENT LOCATIONS AND PEICE COUNTS AND TO CONTACT THE ENGINEER / ARCHITECT WITH ANY QUESTIONS REGARDING POSSIBLE DISCREPANCIES, TYPICAL



FIRE ALARM SYMBOLS (Continued)	
[M]	MAGNETIC DOOR HOLDER
[DS]	DUCT SMOKE DETECTOR
[HD]	HORN STROBE (SHOW CANDELA) 80" MIN., 96" MAX. AFF
[HSD]	HORN STROBE (WITH SECURITY COVER, SHOW CANDELA) 80" MIN., 96" MAX. AFF.
[L]	STROBE ONLY (SHOW CANDELA) 80" MIN., 96" MAX.
[LSC]	STROBE ONLY (WITH SECURITY COVER, SHOW CANDELA) 80" MIN., 96" MAX. AFF
[FAAP]	FIRE ALARM ANNUNCIATOR
[FAAPN]	FIRE ALARM ANNUNCIATOR (NETWORK ANNUNCIATOR)
[FAACP]	FIRE ALARM CONTROL PANEL
[NACPS]	NOTIFICATION APPLIANCE CIRCUIT POWER SUPPLY
[DPS]	DAMPER POSITION SWITCH
[IKH]	INTERFACE TO KITCHEN HOOD
[FST]	FIRE SPRINKLER TAMPER /OSY/PIV VALVE SUPERVISORY SWITCH
[WD]	WATERFLOW DEVICE
[MDL]	MAGNETIC DOOR LOCK
[DA]	DOOR ANNUNCIATOR
[PS]	POWER SUPPLY

STATE OF MISSOURI  
MICHAEL L. PARSON,  
GOVERNOR



SIGNATURE \_\_\_\_\_  
DATE 01-10-2025  
DATE 12-31-2025  
LICENSE EXPIRES \_\_\_\_\_

PROFESSIONAL SEAL



Hurst-Rosche, Inc.  
PROFESSIONAL DESIGN NUMBER: 000372  
3675 W. Outer Road, Suite 205  
Arnold, MO 63010  
636.333.3351 t  
www.hurst-rosche.com

HILLSBORO, IL  
EAST ST. LOUIS, IL  
MARION, IL  
SPRINGFIELD, IL  
NASHVILLE, TN

OFFICE OF ADMINISTRATION  
DIVISION OF FACILITIES  
MANAGEMENT,  
DESIGN AND CONSTRUCTION

DEPARTMENT OF  
MENTAL HEALTH

REPLACE FIRE ALARM PANELS  
AND DEVICES,  
ADMINISTRATION BUILDING  
HAWTHORN CHILDREN'S  
PSYCHIATRIC HOSPITAL

1901 PENNSYLVANIA AVENUE  
ST. LOUIS, MISSOURI 63133

PROJECT # M2414-01  
SITE # 7390  
ASSET # 6517390002

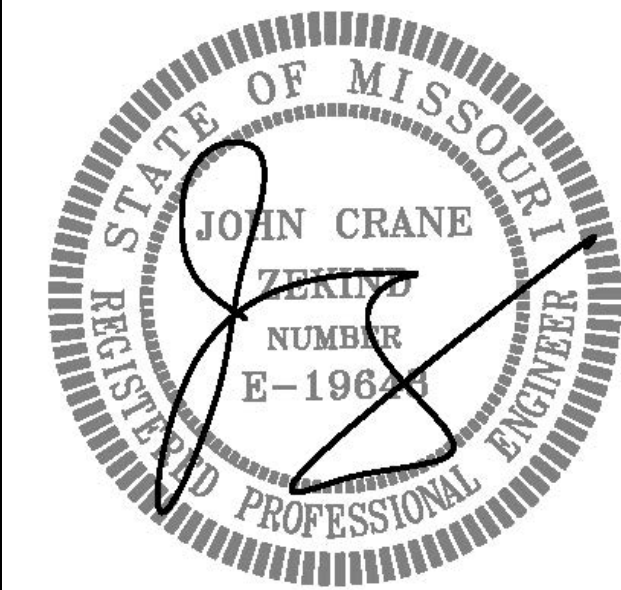
REVISION: \_\_\_\_\_  
DATE: \_\_\_\_\_  
REVISION: \_\_\_\_\_  
DATE: \_\_\_\_\_  
REVISION: \_\_\_\_\_  
DATE: \_\_\_\_\_  
ISSUE DATE: JAN. 10, 2025

CAD DWG FILE: E-101.DWG  
DRAWN BY: AJD/JSM  
CHECKED BY: JCZ  
DESIGNED BY: JCZ

SHEET TITLE:  
**ADMIN. BUILDING  
ELECTRICAL PLAN  
EAST**

SHEET NUMBER:

**E-101**  
04 OF 08 SHEETS  
JAN. 10, 2025



SIGNATURE 01-10-2025

DATE 12-31-2025

LICENSE EXPIRES

PROFESSIONAL SEAL



Hurst-Rosche, Inc.  
PROFESSIONAL DESIGN NUMBER: 000372  
3675 W. Outer Road, Suite 205  
Arnold, MO 63010  
636.333.3351 t  
www.hurst-rosche.com

HILLSBORO, IL  
EAST ST. LOUIS, IL  
MARION, IL  
SPRINGFIELD, IL  
NASHVILLE, TN

OFFICE OF ADMINISTRATION  
DIVISION OF FACILITIES  
MANAGEMENT,  
DESIGN AND CONSTRUCTION

DEPARTMENT OF  
MENTAL HEALTH

REPLACE FIRE ALARM PANELS  
AND DEVICES,  
ADMINISTRATION BUILDING  
HAWTHORN CHILDREN'S  
PSYCHIATRIC HOSPITAL  
1901 PENNSYLVANIA AVENUE  
ST. LOUIS, MISSOURI 63133

PROJECT # M2414-01

SITE # 7390

ASSET # 6517390002

REVISION:

DATE:

REVISION:

DATE:

REVISION:

DATE:

ISSUE DATE: JAN. 10, 2025

CAD DWG FILE: E-102.DWG  
DRAWN BY: AJD/JSM  
CHECKED BY: JCZ  
DESIGNED BY: JCZ

SHEET TITLE:

ADMIN. BUILDING  
ELECTRICAL PLAN  
WEST

SHEET NUMBER:

E-102

05 OF 08 SHEETS  
JAN. 10, 2025

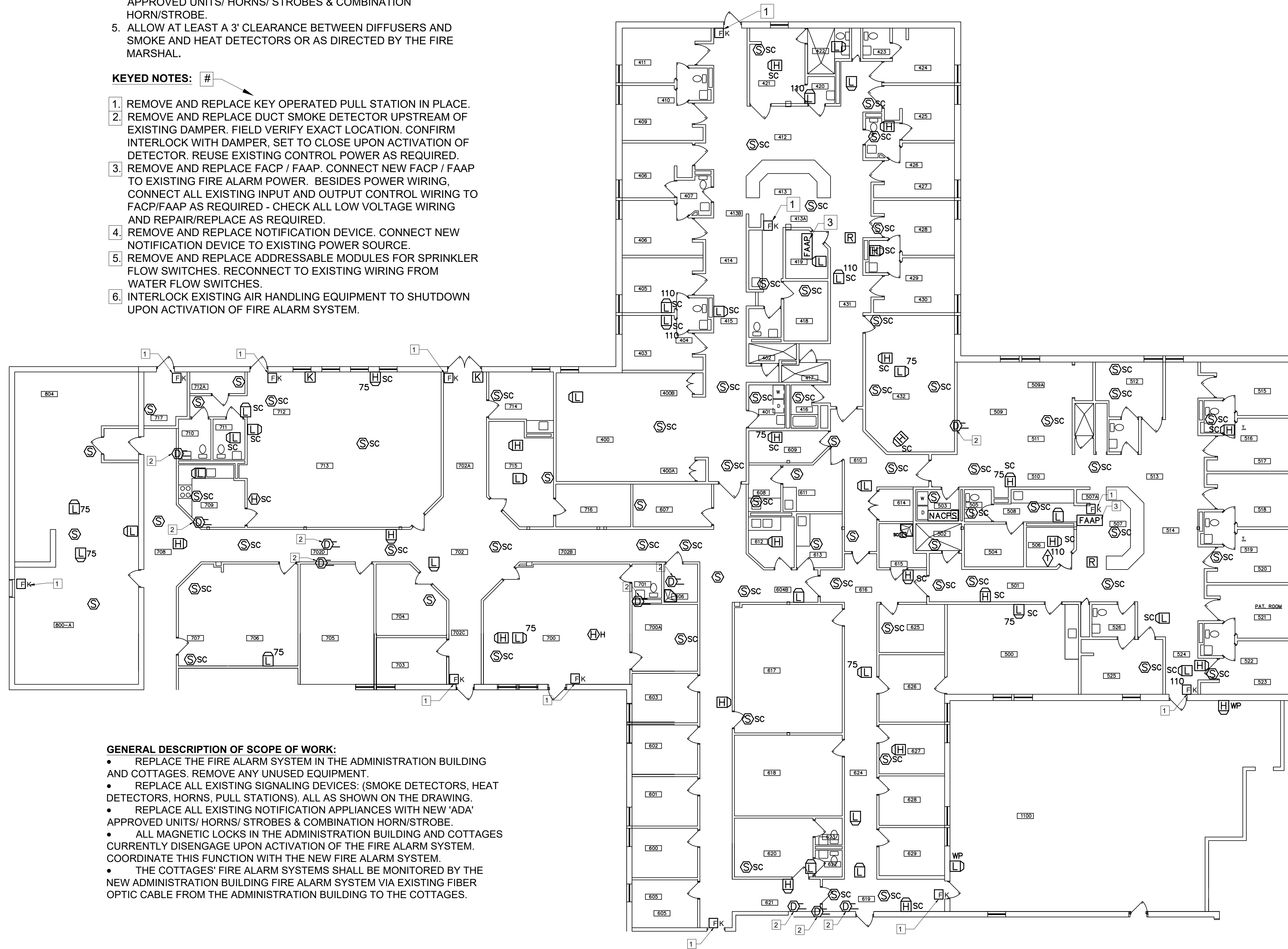
**CONTRACTOR - NOTE:**  
THESE DRAWINGS ARE COMPILED FROM AVAILABLE EXISTING DOCUMENTS AND RECORDS. IT IS THE CONTRACTORS RESPONSIBILITY TO CONFIRM DIMENSIONS, EQUIPMENT LOCATIONS AND PEICE COUNTS AND TO CONTACT THE ENGINEER / ARCHITECT WITH ANY QUESTIONS REGARDING POSSIBLE DISCREPANCIES, TYPICAL

**GENERAL NOTES:**

1. ALL FIRE ALARM WIRING SHALL BE LISTED FIRE ALARM CABLE. IN EXPOSED LOCATIONS THE WIRING SHALL BE INSTALLED IN CONDUIT. PROVIDE RIGID CONDUIT WHERE ACCESSIBLE TO PATIENTS AND PUBLIC. PROVIDE PLENUM RATED CABLE IN PLENUM AREAS. UNDERGROUND CABLE SHALL BE DIRECT BURIAL TYPE, INSTALLED IN CONDUIT.
2. ALL WORK SHALL CONFORM WITH 2018 IBC, SECTION 907 AND NFPA 72, 2016.
3. REPLACE ALL EXISTING SIGNALING DEVICES: (SMOKE DETECTORS, HEAT DETECTORS, HORNS, PULL STATIONS). ALL AS SHOWN ON THE DRAWING.
4. REPLACE ALL EXISTING NOTIFICATION APPLIANCES WITH NEW 'ADA' APPROVED UNITS/ HORNS/ STROBES & COMBINATION HORN/STROBE.
5. ALLOW AT LEAST A 3' CLEARANCE BETWEEN DIFFUSERS AND SMOKE AND HEAT DETECTORS OR AS DIRECTED BY THE FIRE MARSHAL.

**KEYED NOTES: #**

1. REMOVE AND REPLACE KEY OPERATED PULL STATION IN PLACE.
2. REMOVE AND REPLACE DUCT SMOKE DETECTOR UPSTREAM OF EXISTING DAMPER. FIELD VERIFY EXACT LOCATION. CONFIRM INTERLOCK WITH DAMPER, SET TO CLOSE UPON ACTIVATION OF DETECTOR. REUSE EXISTING CONTROL POWER AS REQUIRED.
3. REMOVE AND REPLACE FACP / FAAP. CONNECT NEW FACP / FAAP TO EXISTING FIRE ALARM POWER. BESIDES POWER WIRING, CONNECT ALL EXISTING INPUT AND OUTPUT CONTROL WIRING TO FACP/FAAP AS REQUIRED - CHECK ALL LOW VOLTAGE WIRING AND REPAIR/REPLACE AS REQUIRED.
4. REMOVE AND REPLACE NOTIFICATION DEVICE. CONNECT NEW NOTIFICATION DEVICE TO EXISTING POWER SOURCE.
5. REMOVE AND REPLACE ADDRESSABLE MODULES FOR SPRINKLER FLOW SWITCHES. RECONNECT TO EXISTING WIRING FROM WATER FLOW SWITCHES.
6. INTERLOCK EXISTING AIR HANDLING EQUIPMENT TO SHUTDOWN UPON ACTIVATION OF FIRE ALARM SYSTEM.



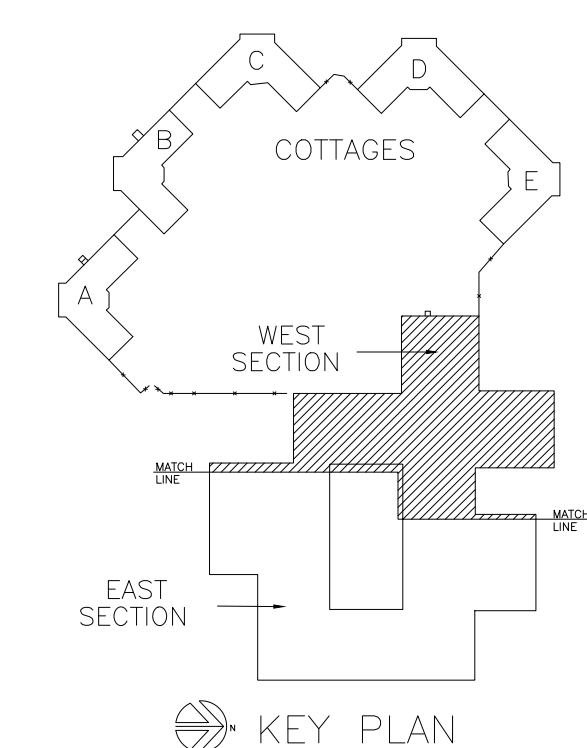
**GENERAL DESCRIPTION OF SCOPE OF WORK:**

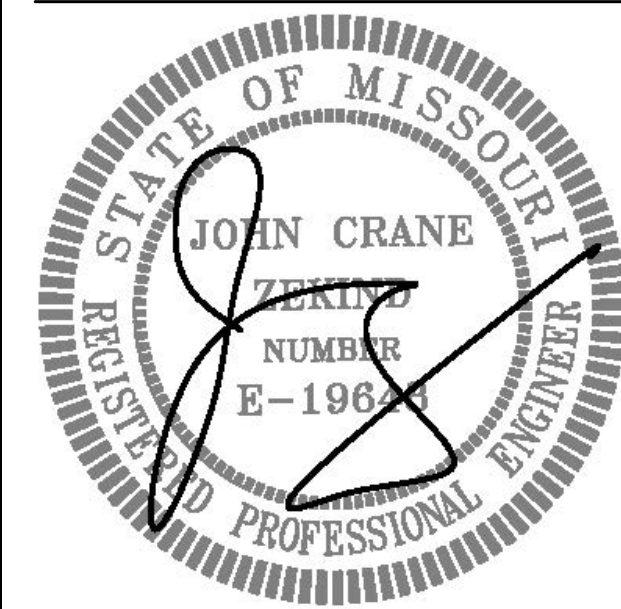
- REPLACE THE FIRE ALARM SYSTEM IN THE ADMINISTRATION BUILDING AND COTTAGES. REMOVE ANY UNUSED EQUIPMENT.
- REPLACE ALL EXISTING SIGNALING DEVICES: (SMOKE DETECTORS, HEAT DETECTORS, HORNS, PULL STATIONS). ALL AS SHOWN ON THE DRAWING.
- REPLACE ALL EXISTING NOTIFICATION APPLIANCES WITH NEW 'ADA' APPROVED UNITS/ HORNS/ STROBES & COMBINATION HORN/STROBE.
- ALL MAGNETIC LOCKS IN THE ADMINISTRATION BUILDING AND COTTAGES CURRENTLY DISENGAGE UPON ACTIVATION OF THE FIRE ALARM SYSTEM. COORDINATE THIS FUNCTION WITH THE NEW FIRE ALARM SYSTEM.
- THE COTTAGES' FIRE ALARM SYSTEMS SHALL BE MONITORED BY THE NEW ADMINISTRATION BUILDING FIRE ALARM SYSTEM VIA EXISTING FIBER OPTIC CABLE FROM THE ADMINISTRATION BUILDING TO THE COTTAGES.



1 PARTIAL FLOOR PLAN-WEST SECTION  
E-102 SCALE: 3/32" = 1'-0"

FIRE ALARM SYMBOLS	
NOTE: NOT ALL SYMBOLS MAY APPLY TO THIS SHEET	
[Z]	ADDRESSABLE INITIATING POINT
[R]	ADDRESSABLE RELAY POINT
[H]	HORN ONLY
[K]	KEYPAD
[F]	MANUAL PULL STATION AT 48" AFF
[FK]	KEY OPERATED MANUAL PULL STATION AT 48" AFF
[S]	SMOKE DETECTOR
[S/SC]	SMOKE DETECTOR (WITH SECURITY COVER)
[H]	HEAT DETECTOR
[H/SC]	HEAT DETECTOR (WITH SECURITY COVER)
[H/H]	HEAT DETECTOR (HIGH HEAT)
[M]	MAGNETIC DOOR HOLDER
[D]	DUCT SMOKE DETECTOR
[H]	HORN STROBE (SHOW CANDELA) 80" MIN., 96" MAX. AFF
[H]	HORN STROBE (WITH SECURITY COVER, SHOW CANDELA) 80" MIN., 96" MAX. AFF.
[L]	STROBE ONLY (SHOW CANDELA) 80" MIN., 96" MAX.
[L/SC]	STROBE ONLY (WITH SECURITY COVER, SHOW CANDELA) 80" MIN., 96" MAX. AFF
[FAAP]	FIRE ALARM ANNUCIATOR
[FAAP N]	FIRE ALARM ANNUCIATOR (NETWORK ANNUCIATOR)
[FACP]	FIRE ALARM CONTROL PANEL
[NACPS]	NOTIFICATION APPLIANCE CIRCUIT POWER SUPPLY
[D]	DAMPER POSITION SWITCH
[I]	INTERFACE TO KITCHEN HOOD
[T]	FIRE SPRINKLER TAMPER /OSY/PIV VALVE SUPERVISORY SWITCH
[W]	WATERFLOW DEVICE
[M]	MAGNETIC DOOR LOCK
[DA]	DOOR ANNUCIATOR
[PS]	POWER SUPPLY





SIGNATURE  
DATE 01-10-2025  
12-31-2025  
LICENSE EXPIRES

PROFESSIONAL SEAL



Hurst-Rosche, Inc.  
PROFESSIONAL DESIGN NUMBER: 000372  
3675 W. Outer Road, Suite 205  
Arnold, MO 63010  
636.333.3351 t  
www.hurst-rosche.com  
HILLSBORO, IL  
EAST ST. LOUIS, IL  
MARION, IL  
SPRINGFIELD, IL  
NASHVILLE, TN

OFFICE OF ADMINISTRATION  
DIVISION OF FACILITIES  
MANAGEMENT,  
DESIGN AND CONSTRUCTION

DEPARTMENT OF  
MENTAL HEALTH  
REPLACE FIRE ALARM PANELS  
AND DEVICES,  
ADMINISTRATION BUILDING  
HAWTHORN CHILDREN'S  
PSYCHIATRIC HOSPITAL  
1901 PENNSYLVANIA AVENUE  
ST. LOUIS, MISSOURI 63133

PROJECT # M2414-01  
SITE # 7390  
ASSET # 6517390002

REVISION: \_\_\_\_\_  
DATE: \_\_\_\_\_  
REVISION: \_\_\_\_\_  
DATE: \_\_\_\_\_  
REVISION: \_\_\_\_\_  
DATE: \_\_\_\_\_  
ISSUE DATE: JAN. 10, 2025

CAD DWG FILE: E-103.DWG  
DRAWN BY: AJD/JSM  
CHECKED BY: JCZ  
DESIGNED BY: JCZ

SHEET TITLE:  
TYP. COTTAGE  
ELECTRICAL PLAN

SHEET NUMBER:

E-103  
06 OF 08 SHEETS  
JAN. 10, 2025

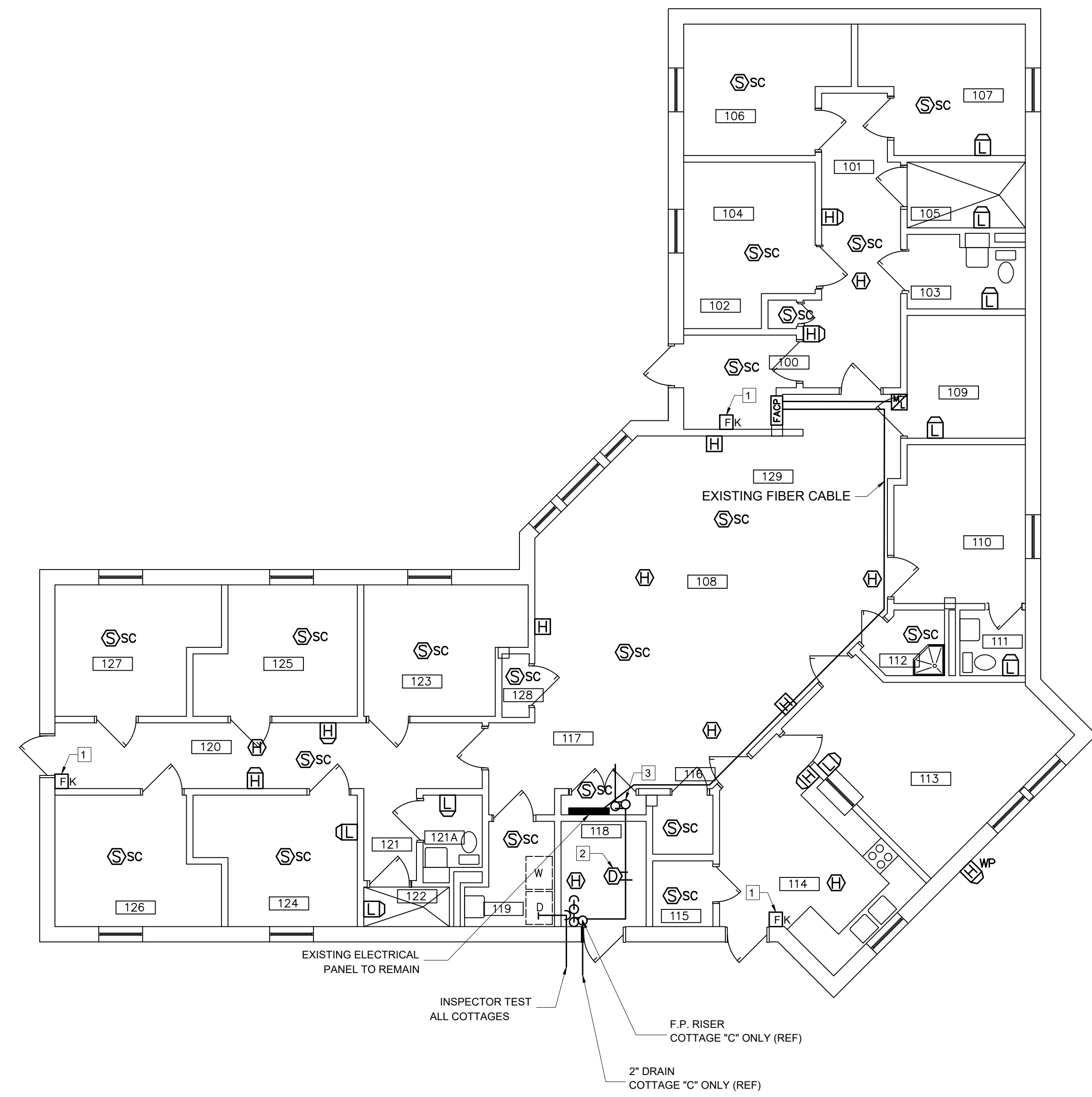
**CONTRACTOR - NOTE:**  
THESE DRAWINGS ARE COMPILED FROM AVAILABLE EXISTING DOCUMENTS AND RECORDS. IT IS THE CONTRACTORS RESPONSIBILITY TO CONFIRM DIMENSIONS, EQUIPMENT LOCATIONS AND PEICE COUNTS AND TO CONTACT THE ENGINEER / ARCHITECT WITH ANY QUESTIONS REGARDING POSSIBLE DISCREPANCIES, TYPICAL

FIRE ALARM SYMBOLS	
NOTE:	NOT ALL SYMBOLS MAY APPLY TO THIS SHEET
[Z]	ADDRESSABLE INITIATING POINT
[R]	ADDRESSABLE RELAY POINT
[H]	HORN ONLY
[K]	KEYPAD
[F]	MANUAL PULL STATION AT 48" AFF
[FK]	KEY OPERATED MANUAL PULL STATION AT 48" AFF
[S]	SMOKE DETECTOR
[Ssc]	SMOKE DETECTOR (WITH SECURITY COVER)
[H]	HEAT DETECTOR
[Hsc]	HEAT DETECTOR (WITH SECURITY COVER)
[HH]	HEAT DETECTOR (HIGH HEAT)
[M]	MAGNETIC DOOR HOLDER
[D]	DUCT SMOKE DETECTOR
[HD]	HORN STROBE (SHOW CANDELA) 80" MIN., 96" MAX. AFF
[HSD]	HORN STROBE (WITH SECURITY COVER, SHOW CANDELA) 80" MIN., 96" MAX. AFF.
[LD]	STROBE ONLY (SHOW CANDELA) 80" MIN., 96" MAX.
[LSD]	STROBE ONLY (WITH SECURITY COVER, SHOW CANDELA) 80" MIN., 96" MAX. AFF
[FAAP]	FIRE ALARM ANNUCIATOR
[FAAPN]	FIRE ALARM ANNUCIATOR (NETWORK ANNUCIATOR)
[FACP]	FIRE ALARM CONTROL PANEL
[NACPS]	NOTIFICATION APPLIANCE CIRCUIT POWER SUPPLY
[D]	DAMPER POSITION SWITCH
[I]	INTERFACE TO KITCHEN HOOD
[T]	FIRE SPRINKLER TAMPER /OSY/PIV VALVE SUPERVISORY SWITCH
[W]	WATERFLOW DEVICE
[M]	MAGNETIC DOOR LOCK
[DA]	DOOR ANNUCIATOR
[PS]	POWER SUPPLY

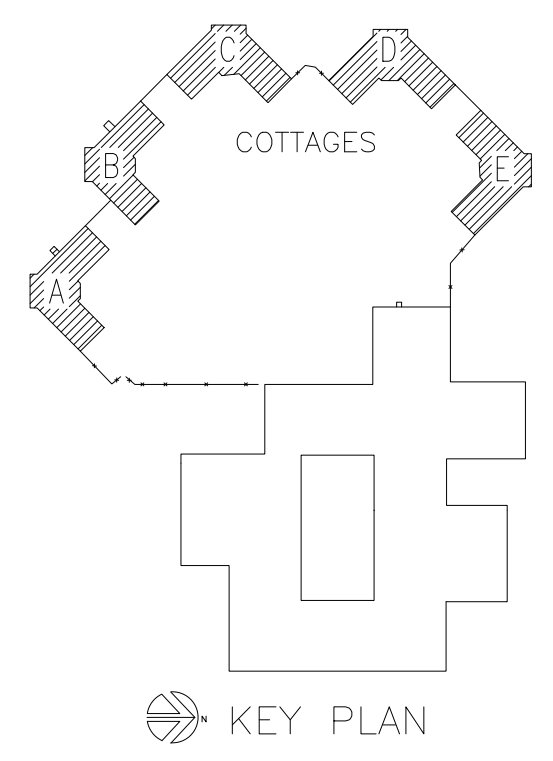
- GENERAL NOTES:**
- ALL FIRE ALARM WIRING SHALL BE LISTED FIRE ALARM CABLE. IN EXPOSED LOCATIONS THE WIRING SHALL BE INSTALLED IN CONDUIT. PROVIDE RIGID CONDUIT WHERE ACCESSIBLE TO PATIENTS AND PUBLIC. PROVIDE PLENUM RATED CABLE IN PLENUM AREAS. UNDERGROUND CABLE SHALL BE DIRECT BURIAL TYPE, INSTALLED IN CONDUIT.
  - ALL WORK SHALL CONFORM WITH 2018 IBC, SECTION 907 AND NFPA 72; 2016.
  - REPLACE ALL EXISTING SIGNALING DEVICES: (SMOKE DETECTORS, HEAT DETECTORS, HORNS, PULL STATIONS). ALL AS SHOWN ON THE DRAWING.
  - REPLACE ALL EXISTING NOTIFICATION APPLIANCES WITH NEW 'ADA' APPROVED UNITS/ HORNS/ STROBES & COMBINATION HORN/STROBE.
  - ALLOW AT LEAST A 3' CLEARANCE BETWEEN DIFFUSERS AND SMOKE AND HEAT DETECTORS OR AS DIRECTED BY THE FIRE MARSHAL.

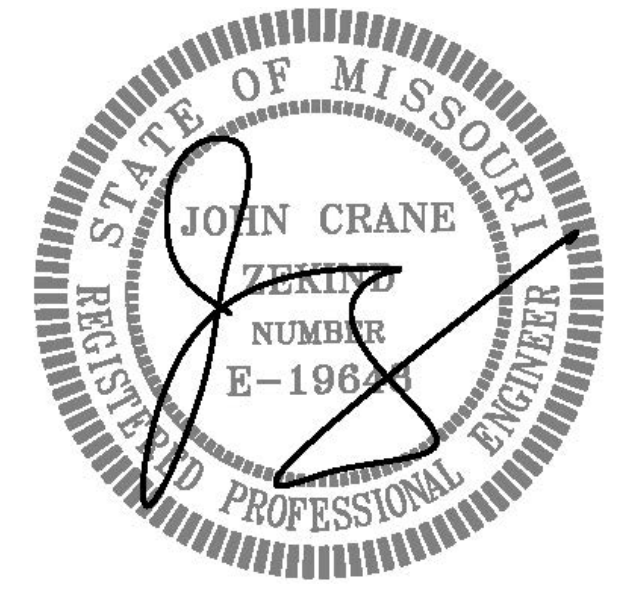
- KEYED NOTES:**
- REMOVE AND REPLACE KEY OPERATED PULL STATION IN PLACE.
  - REMOVE AND REPLACE DUCT SMOKE DETECTOR UPSTREAM OF EXISTING DAMPER. FIELD VERIFY EXACT LOCATION. CONFIRM INTERLOCK WITH DAMPER, SET TO CLOSE UPON ACTIVATION OF DETECTOR. REUSE EXISTING CONTROL POWER AS REQUIRED.
  - REMOVE AND REPLACE FACP / FAAP. CONNECT NEW FACP / FAAP TO EXISTING FIRE ALARM POWER. BESIDES POWER WIRING, CONNECT ALL EXISTING INPUT AND OUTPUT CONTROL WIRING TO FACP/FAAP AS REQUIRED - CHECK ALL LOW VOLTAGE WIRING AND REPAIR/REPLACE AS REQUIRED.
  - REMOVE AND REPLACE NOTIFICATION DEVICE. CONNECT NEW NOTIFICATION DEVICE TO EXISTING POWER SOURCE.
  - REMOVE AND REPLACE ADDRESSABLE MODULES FOR SPRINKLER FLOW SWITCHES. RECONNECT TO EXISTING WIRING FROM WATER FLOW SWITCHES.
  - INTERLOCK EXISTING AIR HANDLING EQUIPMENT TO SHUTDOWN UPON ACTIVATION OF FIRE ALARM SYSTEM.

- GENERAL DESCRIPTION OF SCOPE OF WORK:**
- REPLACE THE FIRE ALARM SYSTEM IN THE ADMINISTRATION BUILDING AND COTTAGES. REMOVE ANY UNUSED EQUIPMENT.
  - REPLACE ALL EXISTING SIGNALING DEVICES: (SMOKE DETECTORS, HEAT DETECTORS, HORNS, PULL STATIONS). ALL AS SHOWN ON THE DRAWING.
  - REPLACE ALL EXISTING NOTIFICATION APPLIANCES WITH NEW 'ADA' APPROVED UNITS/ HORNS/ STROBES & COMBINATION HORN/STROBE.
  - ALL MAGNETIC LOCKS IN THE ADMINISTRATION BUILDING AND COTTAGES CURRENTLY DISENGAGE UPON ACTIVATION OF THE FIRE ALARM SYSTEM. COORDINATE THIS FUNCTION WITH THE NEW FIRE ALARM SYSTEM.
  - THE COTTAGES' FIRE ALARM SYSTEMS SHALL BE MONITORED BY THE NEW ADMINISTRATION BUILDING FIRE ALARM SYSTEM VIA EXISTING FIBER OPTIC CABLE FROM THE ADMINISTRATION BUILDING TO THE COTTAGES.



1 FLOOR PLAN-COTTAGE (TYP. OF 5)  
E-103 SCALE: 3/32" = 1'-0"





SIGNATURE \_\_\_\_\_  
DATE 01-10-2025  
LICENSE EXPIRES 12-31-2025

PROFESSIONAL SEAL



Hurst-Rosche, Inc.  
PROFESSIONAL DESIGN NUMBER: 000372  
3675 W. Outer Road, Suite 205  
Arnold, MO 63010  
636.333.3351 t  
www.hurst-rosche.com  
HILLSBORO, IL  
EAST ST. LOUIS, IL  
MARION, IL  
SPRINGFIELD, IL  
NASHVILLE, TN

OFFICE OF ADMINISTRATION  
DIVISION OF FACILITIES  
MANAGEMENT,  
DESIGN AND CONSTRUCTION

DEPARTMENT OF  
MENTAL HEALTH

REPLACE FIRE ALARM PANELS  
AND DEVICES,  
ADMINISTRATION BUILDING  
HAWTHORN CHILDREN'S  
PSYCHIATRIC HOSPITAL  
1901 PENNSYLVANIA AVENUE  
ST. LOUIS, MISSOURI 63133

PROJECT # M2414-01  
SITE # 7390  
ASSET # 6517390002

REVISION: \_\_\_\_\_  
DATE: \_\_\_\_\_  
REVISION: \_\_\_\_\_  
DATE: \_\_\_\_\_  
REVISION: \_\_\_\_\_  
DATE: \_\_\_\_\_  
ISSUE DATE: JAN. 10, 2025

CAD DWG FILE: E-108.DWG  
DRAWN BY: AJD/JSM  
CHECKED BY: JCZ  
DESIGNED BY: JCZ

SHEET TITLE:

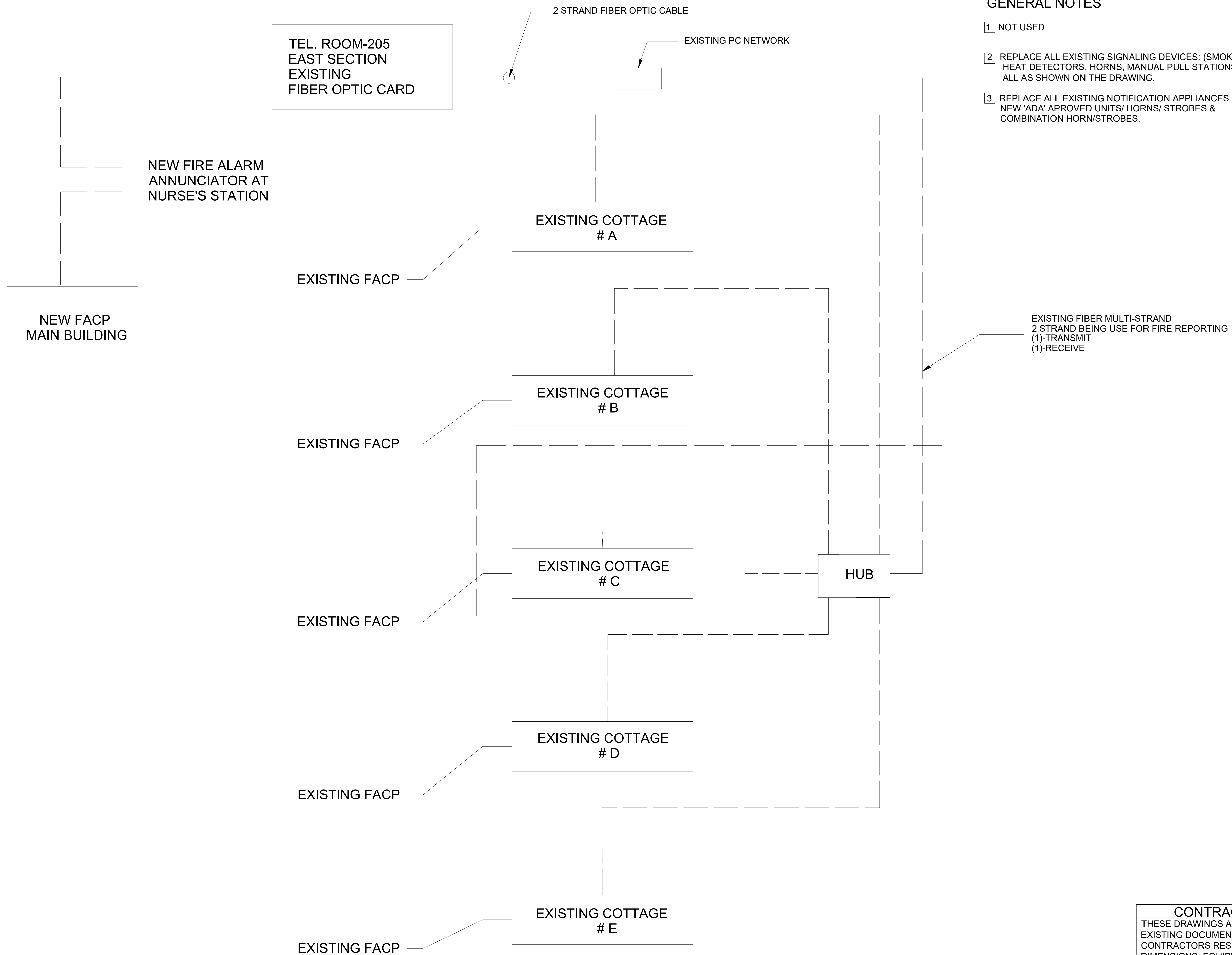
WIRING DIAGRAM

SHEET NUMBER:

**E-108**  
07 OF 08 SHEETS  
JAN. 10, 2025

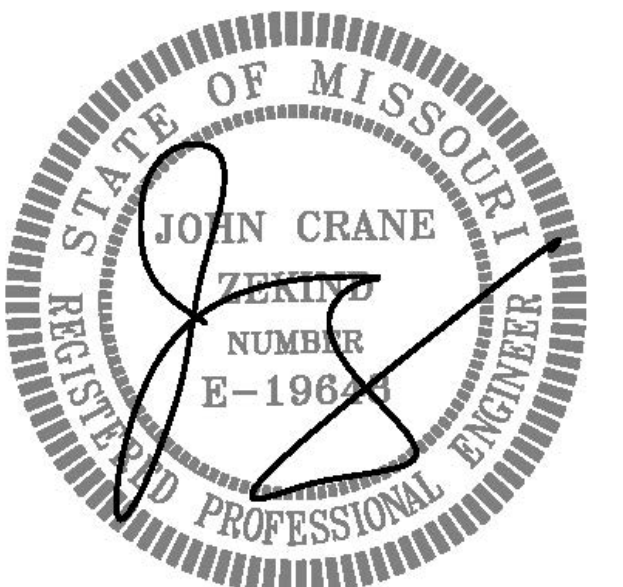
**GENERAL NOTES**

- 1 NOT USED
- 2 REPLACE ALL EXISTING SIGNALING DEVICES: (SMOKE DETECTORS, HEAT DETECTORS, HORNS, MANUAL PULL STATIONS). ALL AS SHOWN ON THE DRAWING.
- 3 REPLACE ALL EXISTING NOTIFICATION APPLIANCES WITH NEW 'ADA' APPROVED UNITS/ HORNS/ STROBES & COMBINATION HORN/STROBES.



1 EXISTING WIRING DIAGRAM  
E-108 SCALE: NTS

**CONTRACTOR - NOTE:**  
THESE DRAWINGS ARE COMPILED FROM AVAILABLE EXISTING DOCUMENTS AND RECORDS. IT IS THE CONTRACTORS RESPONSIBILITY TO CONFIRM DIMENSIONS, EQUIPMENT LOCATIONS AND PEICE COUNTS AND TO CONTACT THE ENGINEER / ARCHITECT WITH ANY QUESTIONS REGARDING POSSIBLE DISCREPANCIES, TYPICAL



SIGNATURE \_\_\_\_\_  
DATE 01-10-2025  
LICENSE EXPIRES 12-31-2025

PROFESSIONAL SEAL



Hurst-Rosche, Inc.  
PROFESSIONAL DESIGN NUMBER: 000372  
3675 W. Outer Road, Suite 205  
Arnold, MO 63010  
636.333.3351 t  
www.hurst-rosche.com  
HILLSBORO, IL  
EAST ST. LOUIS, IL  
MARION, IL  
SPRINGFIELD, IL  
NASHVILLE, TN

OFFICE OF ADMINISTRATION  
DIVISION OF FACILITIES  
MANAGEMENT,  
DESIGN AND CONSTRUCTION

DEPARTMENT OF  
MENTAL HEALTH

REPLACE FIRE ALARM PANELS  
AND DEVICES,  
ADMINISTRATION BUILDING  
HAWTHORN CHILDREN'S  
PSYCHIATRIC HOSPITAL  
1901 PENNSYLVANIA AVENUE  
ST. LOUIS, MISSOURI 63133

PROJECT # M2414-01  
SITE # 7390  
ASSET # 6517390002

REVISION: \_\_\_\_\_  
DATE: \_\_\_\_\_  
REVISION: \_\_\_\_\_  
DATE: \_\_\_\_\_  
REVISION: \_\_\_\_\_  
DATE: \_\_\_\_\_  
ISSUE DATE: JAN. 10, 2025

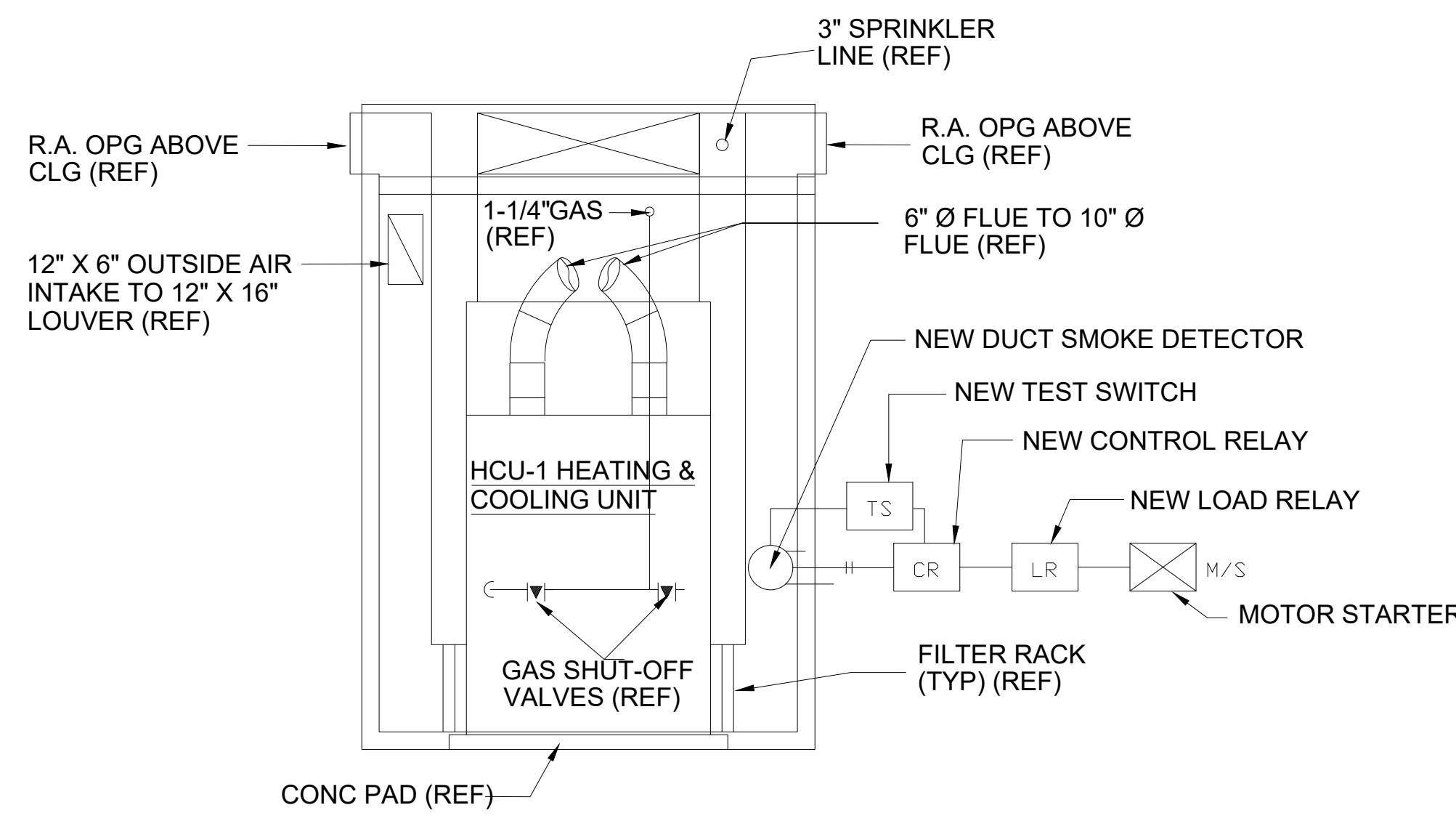
CAD DWG FILE: E-109.DWG  
DRAWN BY: AJD/JSM  
CHECKED BY: JCZ  
DESIGNED BY: JCZ

SHEET TITLE:

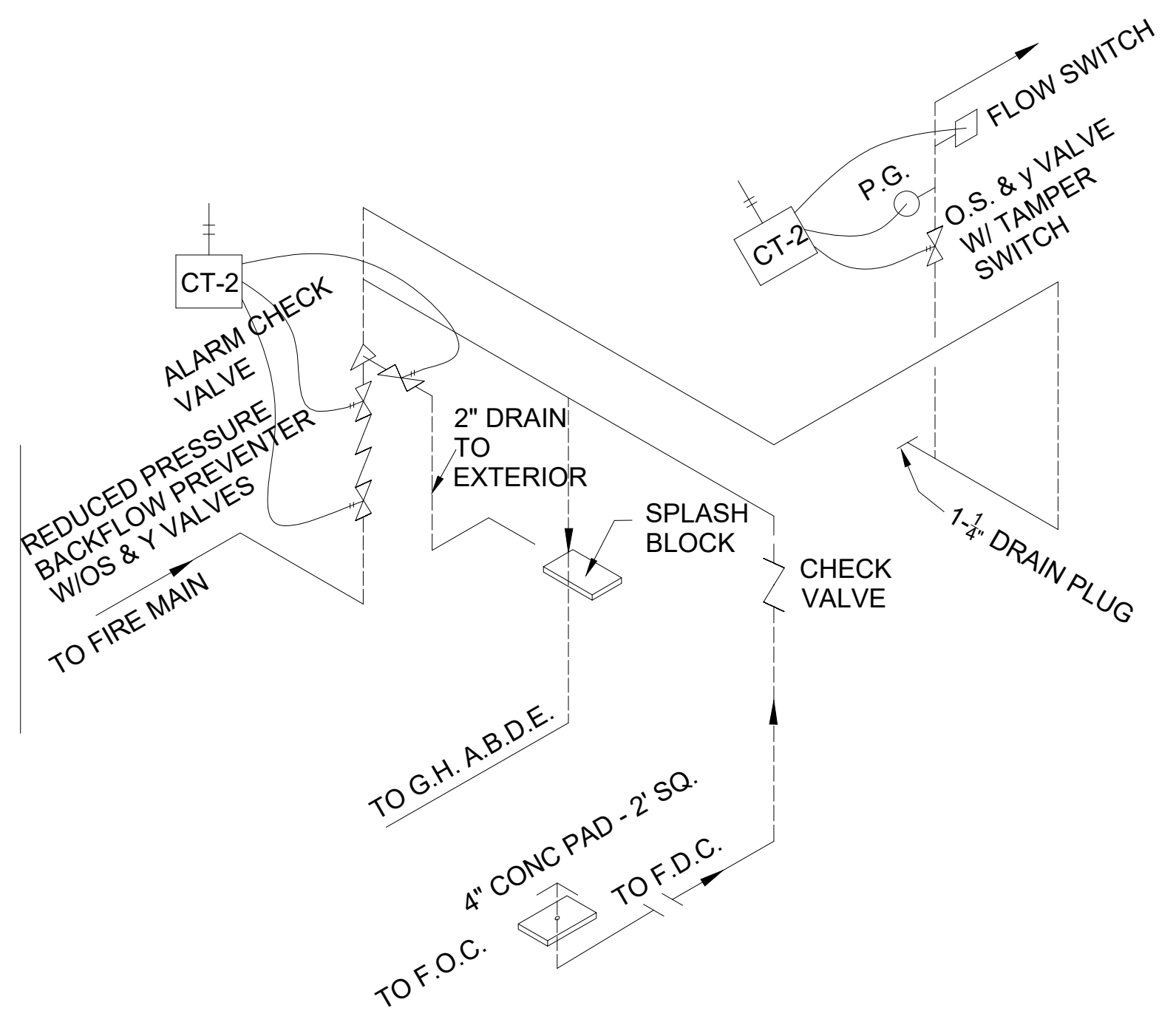
PARTIAL PLAN  
MECH. EQUIP. ROOM

SHEET NUMBER:

**E-109**  
08 OF 08 SHEETS  
JAN. 10, 2025



1 PARTIAL PLAN-MECH. EQUIP. ROOM  
E-109 SCALE: 1/2" = 1'-0"



2 FIRE PROTECTION RISER - COTTAGE C  
E-109 SCALE: NTS

**CONTRACTOR - NOTE:**  
THESE DRAWINGS ARE COMPILED FROM AVAILABLE EXISTING DOCUMENTS AND RECORDS. IT IS THE CONTRACTORS RESPONSIBILITY TO CONFIRM DIMENSIONS, EQUIPMENT LOCATIONS AND PEICE COUNTS AND TO CONTACT THE ENGINEER / ARCHITECT WITH ANY QUESTIONS REGARDING POSSIBLE DISCREPANCIES, TYPICAL