

ADDENDUM NO. 05

TO: PLANS AND SPECIFICATIONS FOR STATE OF MISSOURI

Replace 13 Elevators and 6 Escalators
Truman State Office Building
Jefferson City, MO
Project No: O2354-01

Bid Opening Date: 1:30 PM, Thursday, January 16, 2025 (Changed via Addendum 04)

Bidders are hereby informed that the construction Plans and/or Specifications are modified as follows:

SPECIFICATION CHANGES:

1. NONE

DRAWINGS CHANGES:

1. REPLACE Sheet MD-100 – See attached revised sheet M-100
2. REPLACE Sheet M-101 – See Attached revised sheet M-101
3. REPLACE Sheet M-108 – See Attached revised sheet M-108
 - a. Revisions Made:
 - i. Removed exhaust fans 8 & 9 from mechanical schedule.
 - ii. Exhaust Fan Controls removed.

GENERAL COMMENTS:

1. **The following questions were received:**
 - a. Are the dampers at the top of the elevators going to be wired into the fire alarm system or the HVAC building automation system? Can they be wired into the fire alarm system as normally closed dampers and open when there is a fire alarm?
 - i. The dampers are to be wired to the fire alarm system such that when the detectors at the top of the hoistway detect a fire, the damper shall open. They shall be normally closed. Additionally, new addressable devices shall be re-linked to the building automation system so that each device is identified on the existing Johnson Controls system. This is per the contract requirements of the fire alarm and smoke detection replacement project.
 - b. The elevator penthouse will have three wall pack units. Will these wall pack units operate as stand alone?
 - i. The split DX systems will operate stand alone.

- c. The current chilled water unit in the elevator penthouse is controlled through the HVAC building automation system and is scheduled to be removed. Can the thermostat stay, and alarm the building automation system if the room temperature reaches a high and or low temperature limit?
 - i. The thermostats will be reused to monitor the space temperature of the penthouse and will alarm if out of range.
- d. The current outside air damper and exhaust fan are scheduled to be replaced. Is outdoor air required? In order to control the humidity better and help keep the room cleaner, would it be better to make sure none of the wall pack units pull in any outdoor air and eliminate the outdoor air dampers and exhaust fan?
 - i. The exhaust fans will be removed and the opening blanked off. The intake louver will be blanked off. The blank off will be a double wall insulated panel.

ATTACHMENTS:

- A. MD-100 Addendum 05 Revision (1 Page)
- B. M-101 Addendum 05 Revision (1 Page)
- C. M-108 Addendum 05 Revision (1 Page)

END ADDENDUM 05



01/07/2025

PROFESSIONAL SEAL

ARCHITECTURE &
ENGINEERING



6 SOUTH OLD ORCHARD AVE.
ST. LOUIS, MO 63119
T: 314.918.8393
F: 314.918.1766
www.introba.com

MISSOURI STATE CERTIFICATE
OF AUTHORITY #000148

ELEVATOR
CONSULTANT



600 Emerson Dr., Suite 225
Creve Coeur, MO 63141
(636) 861-2722

OFFICE OF
ADMINISTRATION
DIVISION OF FACILITIES
MANAGEMENT,
DESIGN AND
CONSTRUCTION

Replace 13 Elevators and 6
Escalators

Truman State Office Building
Jefferson City, MO 65102

PROJECT # O2354-01
SITE # 1001
FACILITY # 3101001050

REVISION: ADD NO. 1
DATE: 01-07-2025
REVISION: _____
DATE: _____
REVISION: _____
DATE: _____
ISSUE DATE: 2024-07-12

CAD DWG FILE: _____
DRAWN BY: HWG
CHECKED BY: MW
DESIGNED BY: MWS

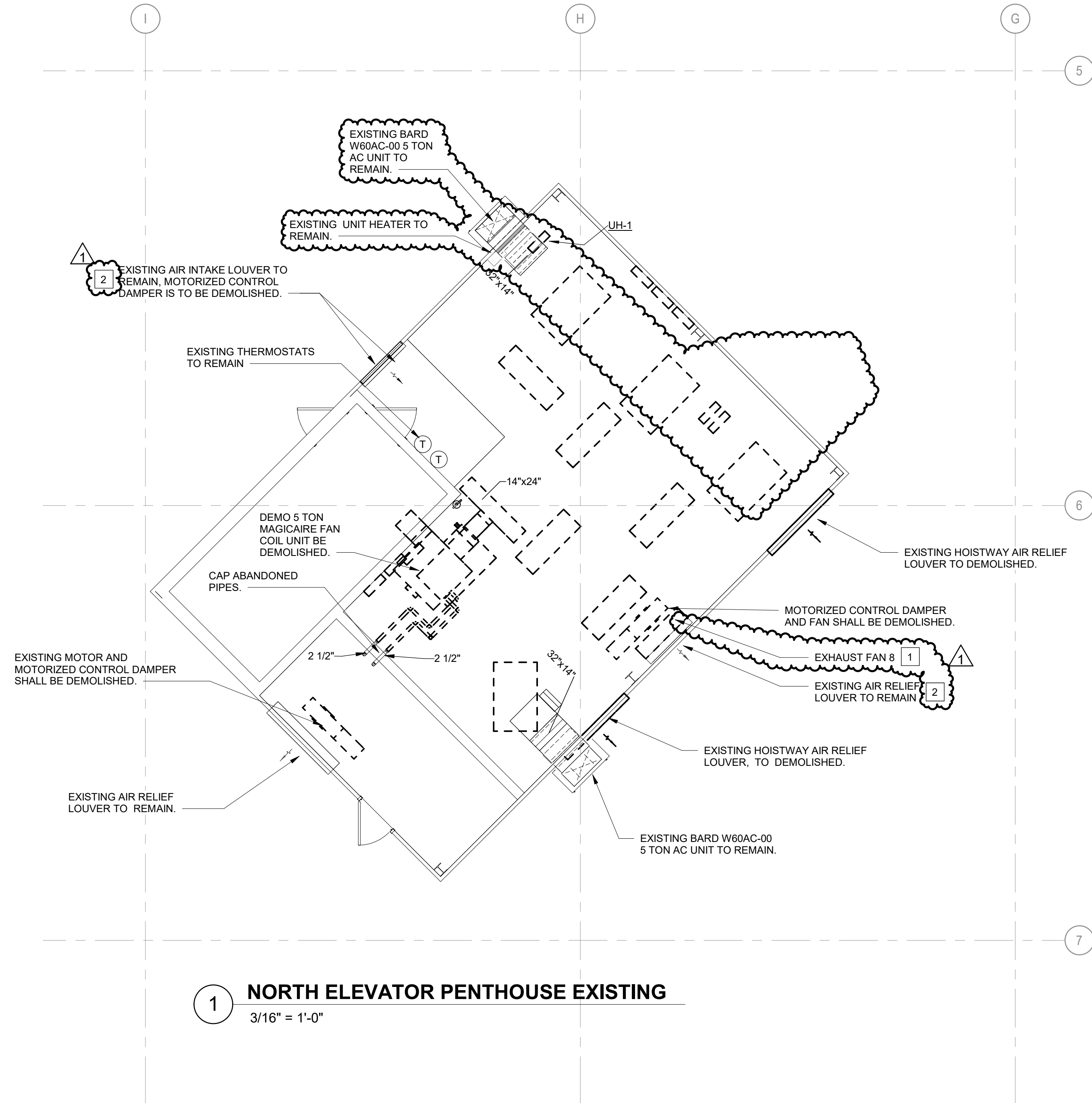
SHEET TITLE:
**MECHANICAL
PENTHOUSE DEMO**

SHEET NUMBER:

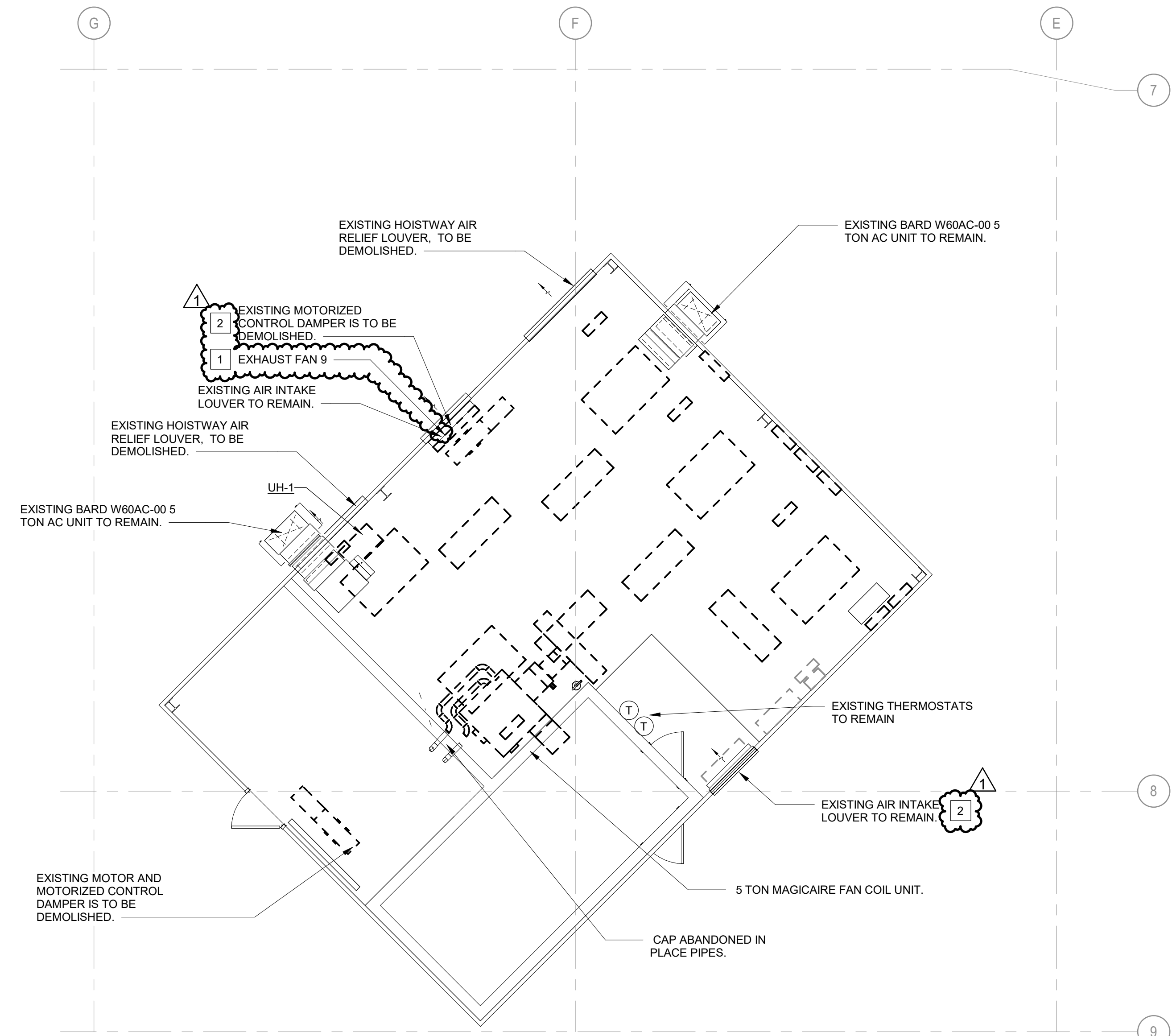
MD-100

2024-07-12

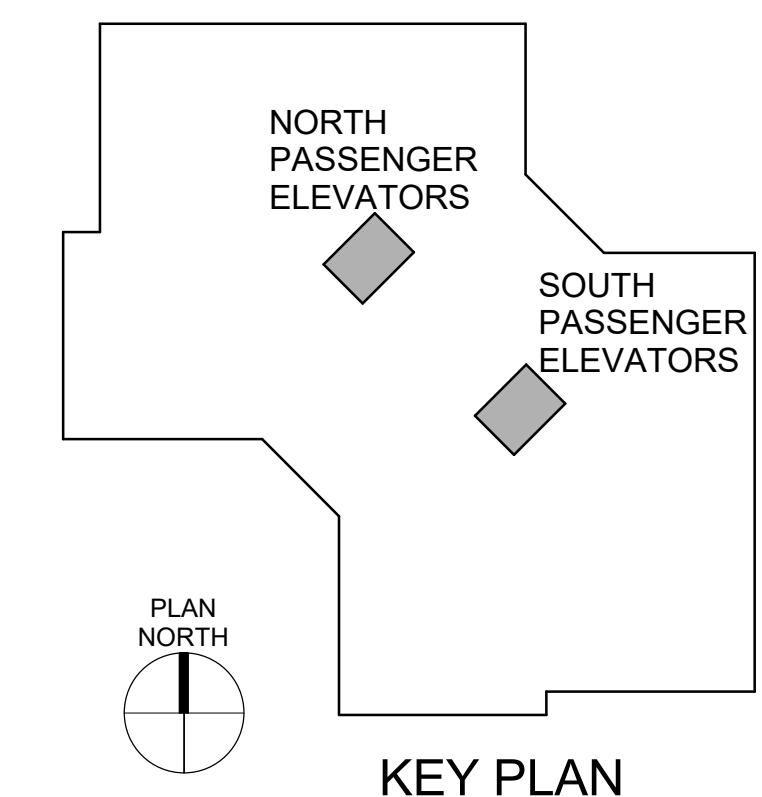
#	SHEET KEYNOTES
1.	REMOVE EXHAUST FAN.
2.	BLANK OFF LOUVER WITH 1 INCH DOUBLE WALL PANEL.



1 NORTH ELEVATOR PENTHOUSE EXISTING
3/16" = 1'-0"



2 SOUTH ELEVATOR PENTHOUSE EXISTING
3/16" = 1'-0"



PROJECT STATUS: BID DOCUMENTS



01/07/2025

PROFESSIONAL SEAL

ARCHITECTURE &
ENGINEERING



6 SOUTH OLD ORCHARD AVE.
ST. LOUIS, MO 63119
T: 314.918.8393
F: 314.918.1766
www.introba.com

MISSOURI STATE CERTIFICATE
OF AUTHORITY #000148

ELEVATOR
CONSULTANT



600 Emerson Dr., Suite 225
Creve Coeur, MO 63141
(636) 861-2722

OFFICE OF
ADMINISTRATION
DIVISION OF FACILITIES
MANAGEMENT,
DESIGN AND
CONSTRUCTION

Replace 13 Elevators and 6
Escalators

Truman State Office Building
Jefferson City, MO 65102

PROJECT # O2354-01
SITE # 1001
FACILITY # 3101001050

REVISION: ADD NO. 1
DATE: 01-07-2025
REVISION: _____
DATE: _____
REVISION: _____
DATE: _____
ISSUE DATE: 2024-07-12

CAD DWG FILE: _____
DRAWN BY: HWG
CHECKED BY: MW
DESIGNED BY: MWS

SHEET TITLE:
MECHANICAL
PENTHOUSES NEW
WORK

SHEET NUMBER:

M-101

2024-07-12

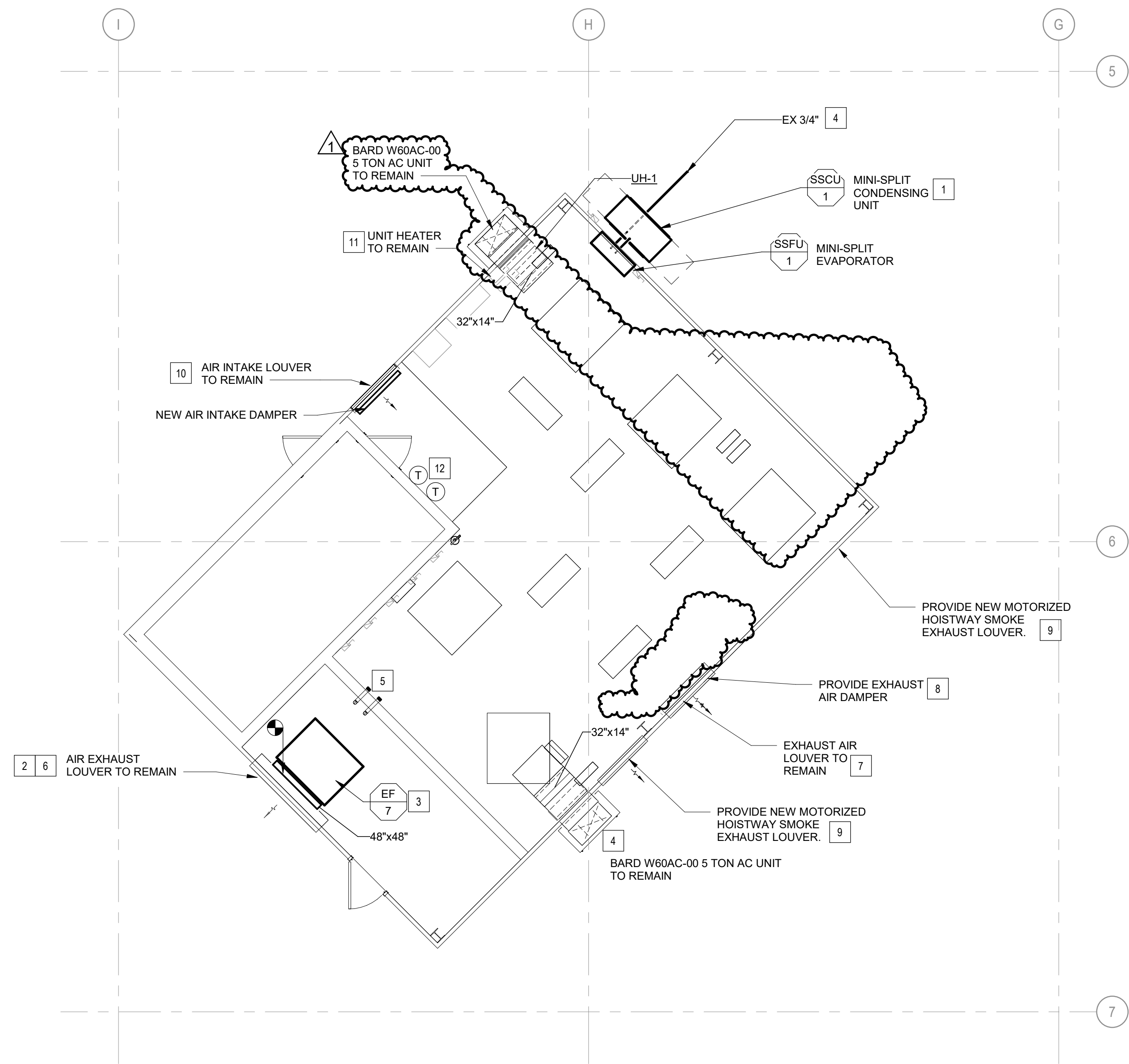
PROJECT STATUS: BID DOCUMENTS

SHEET KEYNOTES

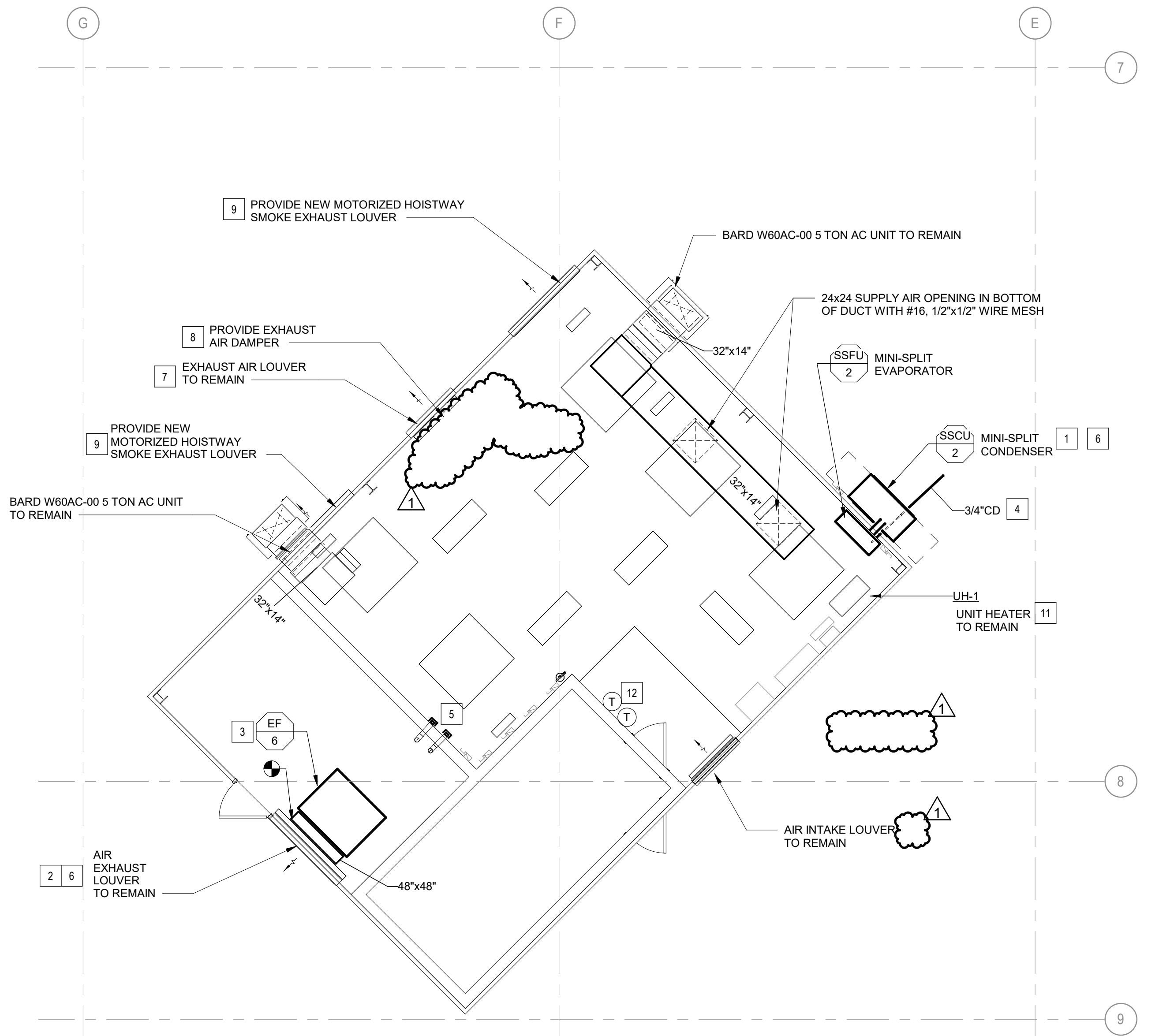
1. PROVIDE AND INSTALL NEW MINI-SPLIT UNIT, INCLUDING WALL-MOUNTING SUPPORT FRAME. COORDINATE WITH ALL TRADES FOR CODE AND FEASIBILITY OF LOCATION. PROVIDE NEW INSULATED CONDENSATE DRAIN AND TERMINAL OVER EXTERIOR ROOF DRAIN.
2. PROVIDE NEW CONTROL DAMPER AND ACTUATOR WITH FAN. DAMPER SHALL CLOSE WHEN FAN IS OFF. INTERFACED WITH FIRE ALARM SYSTEM TO SHUT-DOWN FAN UPON AN ALARM.
3. PROVIDE NEW EXHAUST FANS 6 AND 7 COMPLETE WITH SUPPORTS AND VIBRATION ISOLATORS.
4. PROVIDE NEW CONDENSATE DRAIN LINES AND TERMINATE OVER NEAREST DRAIN.
5. VALVE AND CAP ENDS OF DEMOLISHED CHILLED WATER PIPES AND ABANDON IN PLACE.
6. PROVIDE NEW INSECT AND BIRD SCREENING BEHIND EXISTING 72" DIAMETER LOUVER. EXISTING DUCT PLENUM SECTION TO REMAIN AND MODIFY TO CONNECT NEW FAN AND CONTROL DAMPER.

SHEET KEYNOTES

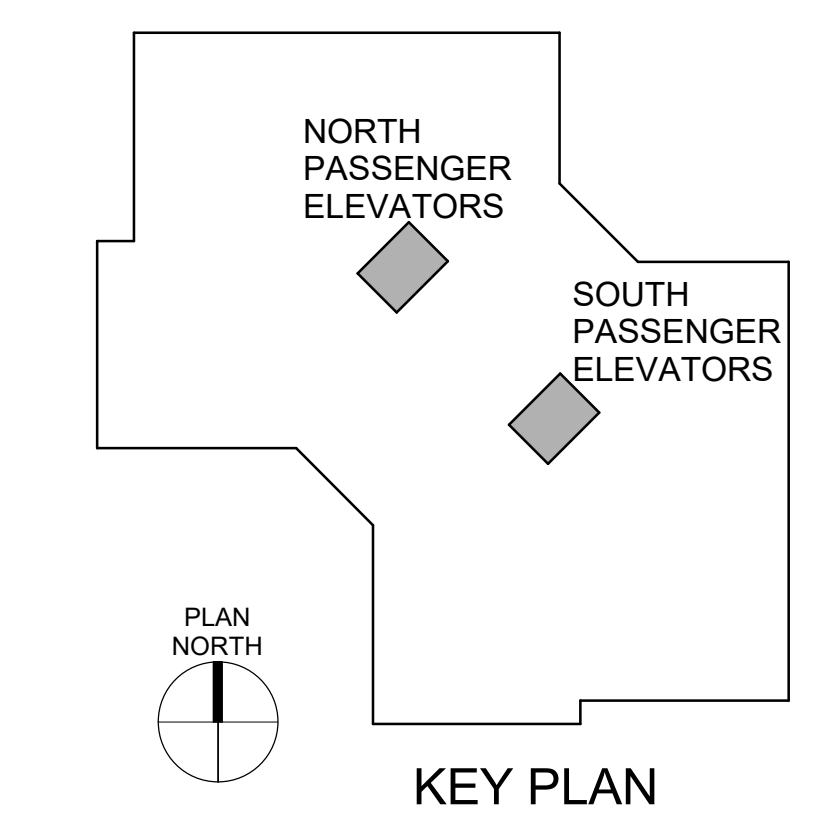
7. PROVIDE NEW INSECT AND BIRD SCREENING BEHIND EXISTING 48" DIAMETER LOUVER. EXISTING DUCT PLENUM SECTION TO REMAIN AND MODIFY TO CONNECT NEW FAN AND CONTROL DAMPER.
8. PROVIDE NEW 26"x26" CONTROL DAMPER AND ACTUATOR. PROVIDE CONNECTION TO BAS. CONFIRM SIZE.
9. PROVIDE NEW ADJUSTABLE LOUVER WITH ACTUATOR AND INTERFACED WITH FIRE ALARM SYSTEM. CONFIRM SIZE.
10. NOT USED.
11. CONFIRM EXISTING UNIT HEATER CONTROLS ARE UNIT MOUNTED AND SET FOR 60F (ADJ.).
12. EXISTING THERMOSTATS FOR A/C UNITS. REUSE TO MONITOR SPACE TEMPERATURE.



2 NORTH ELEVATOR PENTHOUSE NEW WORK
3/16" = 1'-0"



1 SOUTH ELEVATOR PENTHOUSE NEW WORK
3/16" = 1'-0"



IMPERIAL UNITS

SPLIT SYSTEM HEAT PUMP INDOOR FAN COIL UNIT SCHEDULE

UNIT NO.	LOCATION	SERVING	NOMINAL TONS	SUPPLY FAN				COOLING CAPACITY			HEATING CAPACITY			UNIT ELECTRICAL					SEER RATING	BASIS OF DESIGN	REMARKS
				TOTAL (CFM)	MIN OA (CFM)	ESP (IN WG)	MOTOR HP	EAT DB/WB (°F)	LAT DB/WB (°F)	SENSIBLE CAPACITY (MBH)	EAT DB (°F)	CAPACITY (KW)	STEPS	V	PH	FLA	MCA	MOCP			
SSFU-1	PENTHOUSE - NORTH	ELEVATOR MACHINE ROOM	5	1500	360	0.5	0.75	80/67	55/54	39.9	0			208/230	1		8.0/8.0	15/15	14.3	TRANE TEM4	SEE NOTES
SSFU-2	PENTHOUSE - SOUTH	ELEVATOR MACHINE ROOM	5	1500	360	0.5	0.75	80/67	55/54	39.9	0			208/230	1		8.0/8.0	15/15	14.3	TRANE TEM4	SEE NOTES

- NOTES:**
 1. PROVIDE INTEGRAL DISCONNECT
 2. PROVIDE SINGLE POINT OF CONNECTION
 3. PROVIDE CONNECTION TO BAS.
 4. UNIT WEIGHT = 140 LBS.

IMPERIAL UNITS

SPLIT SYSTEM HEAT PUMP OUTDOOR UNIT SCHEDULE

UNIT NO.	LOCATION	AMBIENT EAT DB (°F)	COMPRESSOR			CONDENSER FAN		UNIT ELECTRICAL DATA					BASIS OF DESIGN	REMARKS
			QTY	RATED LOAD AMPS	LOCKED ROTOR AMPS	QTY	HP (EA)	V	PH	FLA	MCA	MOCP		
SSCU-1	OUTSIDE	95	1	23.7	152.5	1	1/3	208/230	1	-	34	60	TRANE 4TWR	SEE NOTES
SSCU-2	OUTSIDE	95	1	23.7	152.5	1	1/3	208/230	1	-	34	60	TRANE 4TWR	SEE NOTES

- NOTES:**
 1. PROVIDE DISCONNECT, HAIL GUARDS, AND FOAM PAD FOR UNIT MOUNTING
 2. UNIT WEIGHT = 280 LBS.



IMPERIAL UNITS

FAN SCHEDULE

UNIT NO.	SERVING	FAN TYPE	AIRFLOW (CFM)	ESP (IN WG)	BHP	MOTOR HP	RPM	DRIVE	STARTER TYPE	UNIT ELECTRICAL DATA		SMOKE DETECTOR	BASIS OF DESIGN	REMARKS
										V	PH			
EF-6	RESTROOMS	INLINE CENTRIFUGAL	13160	1.5	5.2	7.5	770	BELT	VFD	480	3	NO	GREENHECK	1
EF-7	RESTROOMS	INLINE CENTRIFUGAL	13200	1.75	4.3	5	745	BELT	VFD	480	3	NO	GREENHECK	1

- NOTES:**
 1. PROVIDE INTEGRAL DISCONNECT

DAMPER SCHEDULE

UNIT NO.	MANUFACTURER AND MODEL NUMBER	LOCATION	AIR TYPE	CONTROL TYPE	BLADE TYPE	AIR		ELECTRICAL	WIDTH/ HEIGHT (IN)	NOTES
						MAXIMUM AIRFLOW RATE (CFM)	STATIC PRESSURE DROP (IN. H2O)			
1	NAILOR MODEL 1010	N PENTHOUSE	RELIEF AIR	ACTUATOR	PARALLEL	7200	0.07	24/1	48x 48	1,2
2	RUSKIN ELM811D	N PENTHOUSE	EXHAUST AIR LOUVER	ACTUATOR	PARALLEL	15200	0.09	24/1	24x36	1,2
3	NAILOR MODEL 1010	N PENTHOUSE	RELIEF AIR	ACTUATOR	PARALLEL	7200	0.07	24/1	48x 48	1,2
4	NAILOR MODEL 1010	S PENTHOUSE	RELIEF AIR	ACTUATOR	PARALLEL	7200	0.07	24/1	48x 48	1,2
5	RUSKIN ELM811D	S PENTHOUSE	EXHAUST AIR LOUVER	ACTUATOR	PARALLEL	15200	0.09	24/1	24x36	1,2
6	NAILOR MODEL 1010	S PENTHOUSE	RELIEF AIR	ACTUATOR	PARALLEL	7200	0.07	24/1	48x 48	1,2

- NOTES:**
 1. SIZES ARE APPROXIMATE, FIELD VERIFY
 2. INTERLOCK LOUVER TO OPEN WHEN ASSOCIATED FAN IS OPERATING.

STATE OF MISSOURI
 MICHAEL L. PARSON,
 GOVERNOR



01/07/2025

PROFESSIONAL SEAL

ARCHITECTURE &
 ENGINEERING



6 SOUTH OLD ORCHARD AVE.
 ST. LOUIS, MO 63119
 T: 314.918.8383
 F: 314.918.1766
 www.introba.com

MISSOURI STATE CERTIFICATE
 OF AUTHORITY #000148

ELEVATOR
 CONSULTANT



600 Emerson Dr., Suite 225
 Creve Coeur, MO 63141
 (636) 861-2722

OFFICE OF
 ADMINISTRATION
 DIVISION OF FACILITIES
 MANAGEMENT,
 DESIGN AND
 CONSTRUCTION

Replace 13 Elevators and 6
 Escalators

Truman State Office Building
 Jefferson City, MO 65102

PROJECT # O2354-01
 SITE # 1001
 FACILITY # 3101001050

REVISION: ADD NO. 1
 DATE: 01-07-2025
 REVISION:
 DATE:
 REVISION:
 DATE:
 ISSUE DATE: 2024-07-12

CAD DWG FILE:
 DRAWN BY: HWG
 CHECKED BY: MW
 DESIGNED BY: MWS

SHEET TITLE:
 MECHANICAL
 SCHEDULES

SHEET NUMBER:

M-108

2024-07-12

PROJECT STATUS: BID DOCUMENTS