

ADDENDUM NO. 02

TO: PLANS AND SPECIFICATIONS FOR STATE OF MISSOURI

Upgrade / Relocate Rooftop Units
Springfield DOLIR Office Building
Springfield, Missouri
PROJECT NO.: O2516-01

Bid Opening Date: 1:30 PM, Thursday, January 8, 2026 (Unchanged)

Bidders are hereby informed that the construction Plans and/or Specifications are modified as follows:

SPECIFICATION CHANGES:

1. Section 235216 – Condensing Boilers

a. REPLACE Article 2.3.A.1 in its entirety.

1. Boiler Pump Control: Boiler may be programmed to send an output signal to a motor starter for boiler pump to maintain a designed temperature rise across the heat exchanger. The boiler shall be able to operate in this mode with a minimum temperature rise of 20 degrees F and a maximum temperature rise of 60 degrees F.

DRAWINGS CHANGES:

1. Sheet MEP300

- a. REVISE keyed note E.7 for new conduit to be ran with each new circuit for the circuit breakers. Each condenser will require a circuit breaker.

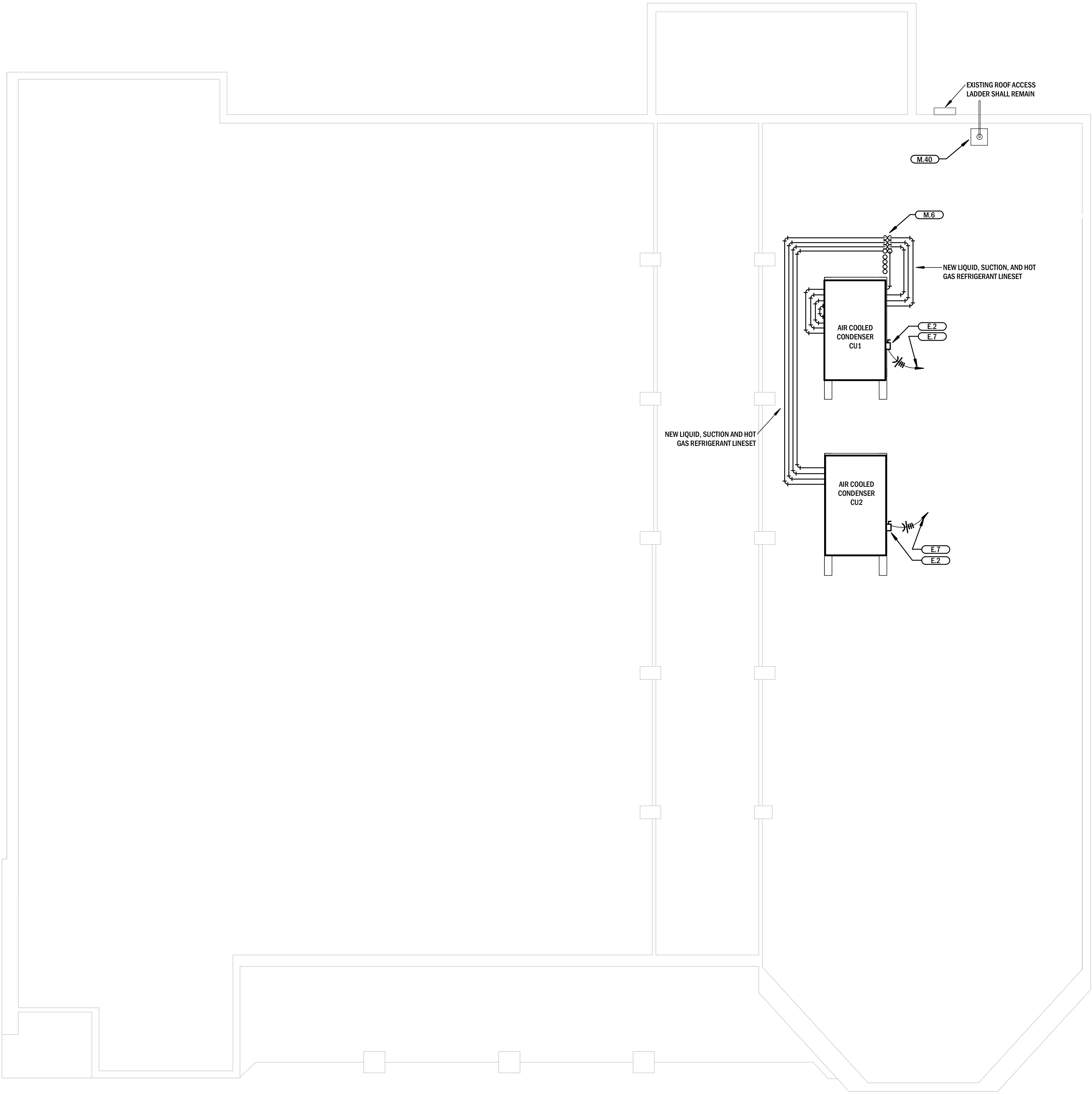
GENERAL COMMENTS:

1. NONE

ATTACHMENTS:

- A. Revised Sheet MEP300 (1 Page)

END ADDENDUM 02



1

ROOF MEP PLAN

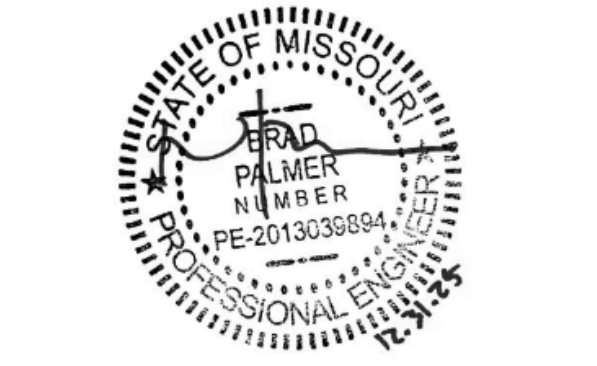
Scale: 1/8" = 1'-0"

NORTH

PHOTOGRAPHIC DOCUMENTATION	
1	CONTRACTOR SHALL DOCUMENT EXISTING ROOF CONDITION PRIOR TO COMMENCEMENT OF CONSTRUCTION AND THROUGHOUT THE CONSTRUCTION PROCESS. SEE SPECIFICATIONS FOR PHOTOGRAPHIC REQUIREMENTS.

KEYNOTES	
E.2	PROVIDE NEW 400A, NON FUSED, NEMA 3R DISCONNECT FOR CONDENSER.
E.7	PROVIDE NEW 300A CIRCUIT BREAKER IN EXISTING PANEL, PDPA AND WIRE NEW CONDENSER TO EXISTING CIRCUIT. PREVIOUS UNITS ARE EACH FED FROM A 300A CIRCUIT. REMOVE EXISTING BREAKER TO ACCOMMODATE NEW UNIT. CONTRACTOR SHALL PROVIDE NEW CONDUIT FOR EACH NEW CIRCUIT.
M.6	ROUTE REFRIGERANT LINES DOWN IN CHASE TO MECHANICAL ROOM BELOW. PROVIDE NEW WEATHERPROOF DOGHOUSE, NEW ROOF FLASHING AND REPAIR ROOF AT NEW PIPING PENETRATION. SEAL PENETRATIONS AND KEEP WEATHER TIGHT.
M.40	PROVIDE DAWIT CRANE EQUAL TO LIFTING PRODUCTS ALUM-LITE 500LB DAWIT CRANE WITH HAND WENCH. PROVIDE BASE FOR INSTALLATION ON ROOF TOP.

STATE OF MISSOURI
MICHAEL KEHOE
GOVERNOR



PROFESSIONAL SEAL
INTERPRES CERTIFICATE OF AUTHORITY -MISSOURI 201303378
COPYRIGHT 2025 BY INTERPRES BUILDING SOLUTIONS. ALL RIGHTS RESERVED. NO PART OF THIS DRAWING MAY BE REPRODUCED BY PHOTOCOPY OR BY ANY OTHER MEANS AND NO PART OF THIS DRAWING MAY BE STORED, PROCESSED OR TRANSMITTED IN OR BY ANY COMPUTER OR OTHER SYSTEMS WITHOUT THE PRIOR WRITTEN PERMISSION OF INTERPRES BUILDING SOLUTIONS.



OFFICE OF ADMINISTRATION
DIVISION OF FACILITIES
MANAGEMENT
DESIGN AND CONSTRUCTION

UPGRADE/RELOCATE
ROOFTOP UNITS

SPRINGFIELD DOLIR
OFFICE BUILDING

SPRINGFIELD, MO

PROJECT# O2516-01
SITE # 1032
FACILITY # 3101032001

REVISION: ADDENDUM #2
DATE: 12.31.25
REVISION:
DATE:
REVISION:
DATE:
ISSUE DATE:

CAD DWG FILE: MEP300
DRAWN BY: BRP
CHECKED BY: BRP
DESIGNED BY: BRP

SHEET TITLE:
ROOF MEP PLAN

SHEET NUMBER:
MEP300
4 OF 10 SHEETS
9/30/2025