

PAVEMENT OVERLAY

MISSOURI STATE HIGHWAY PATROL

EMERGENCY VEHICLE OPERATIONS

COURSE

JEFFERSON CITY , MISSOURI

OWNER: STATE OF MISSOURI
MICHAEL L. PARSON,
GOVERNOR

DEPARTMENT OF PUBLIC SAFETY
MISSOURI STATE HIGHWAY PATROL

PROJECT
MANAGEMENT: OFFICE OF ADMINISTRATION
DIVISION OF FACILITIES MANAGEMENT,
DESIGN AND CONSTRUCTION



EMERGENCY VEHICLE OPERATIONS COURSE
2302 MILITIA DRIVE
JEFFERSON CITY, MISSOURI

DESIGNER: STATE OF MISSOURI - OFFICE OF ADMINISTRATION
DIVISION OF FACILITIES MANAGEMENT DESIGN
AND CONSTRUCTION: 301 W. HIGH STREET,
JEFFERSON CITY, MO. 65102

PROJECT NUMBER: R2302-01

ASSET NUMBER: 8136012001



PROJECT
DESIGN
UNIT

GENERAL NOTES:

1. UNDERGROUND FACILITIES, STRUCTURES AND UTILITIES HAVE BEEN PLOTTED FROM AVAILABLE SURVEYS AND RECORDS AND , THEREFORE, LOCATIONS MUST BE CONSIDERED APPROXIMATE ONLY. THERE MAY BE OTHERS, THE EXISTENCE OF WHICH, AT PRESENT, IS NOT KNOWN. VERIFICATION OF THE LOCATIONS OF UNDERGROUND UTILITIES, SHOWN OR NOT SHOWN, WILL BE THE RESPONSIBILITY OF THE CONSTRUCTION CONTRACTOR.
2. NO GUARANTEE IS GIVEN FOR THE ACCURACY OF QUANTITIES AND DIMENSIONS SHOWN. THE CONTRACTOR SHALL BE RESPONSIBLE FOR VERIFYING ALL INFORMATION AND REPORTING ANY DISCREPANCIES TO THE ENGINEER.
3. ASPHALT REPAIR AREAS (1,000 SQ. FT.); DETAIL 2/C-501 - LOCATION TO BE DETERMINED AT THE PRE-CON MEETING.

OFFICE OF ADMINISTRATION
DIVISION OF FACILITIES
MANAGEMENT,
DESIGN AND CONSTRUCTION

DEPARTMENT OF
PUBLIC SAFETY
MISSOURI STATE
HIGHWAY PATROL

PAVEMENT OVERLAY
EMERGENCY VEHICLE
COPERATIONS COURSE

MILITIA DRIVE
JEFFERSON CITY, MISSOURI

PROJECT # R2302-01

ASSET # 8136012001

REVISION: _____
DATE: _____
REVISION: _____
DATE: _____
REVISION: _____
DATE: _____

ISSUE DATE: 09/01/2022

CAD DWG FILE: _____
DRAWN BY: _____
CHECKED BY: _____
DESIGNED BY: _____

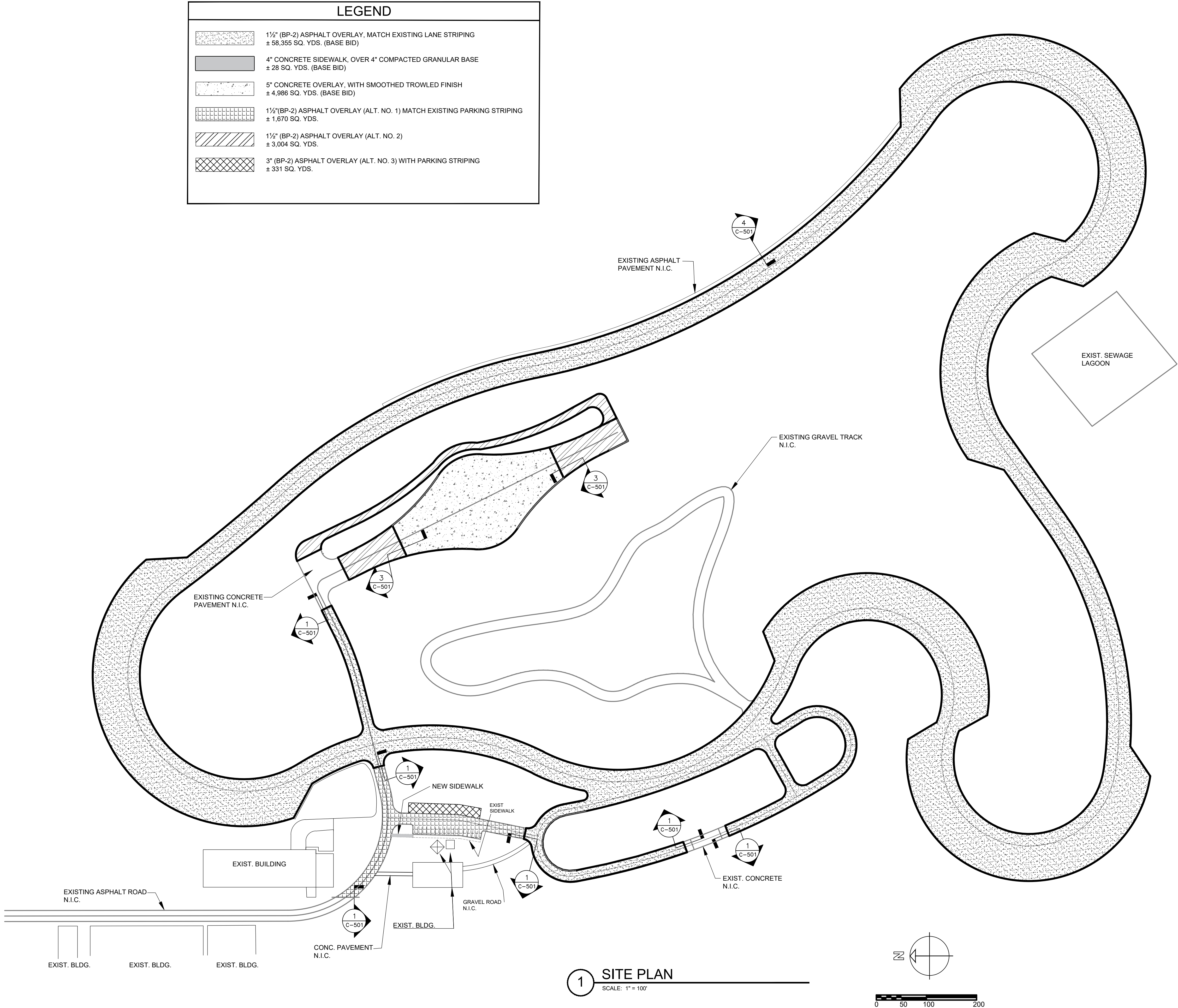
SHEET TITLE:

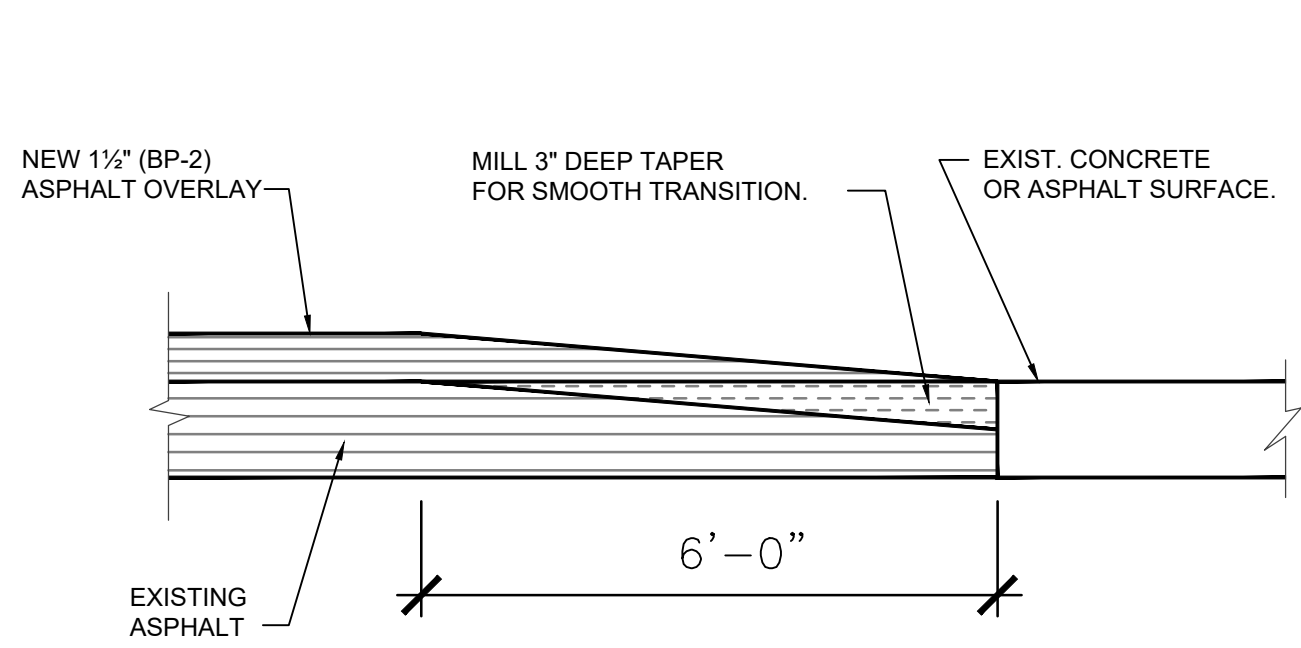
SITE PLAN

SHEET NUMBER:

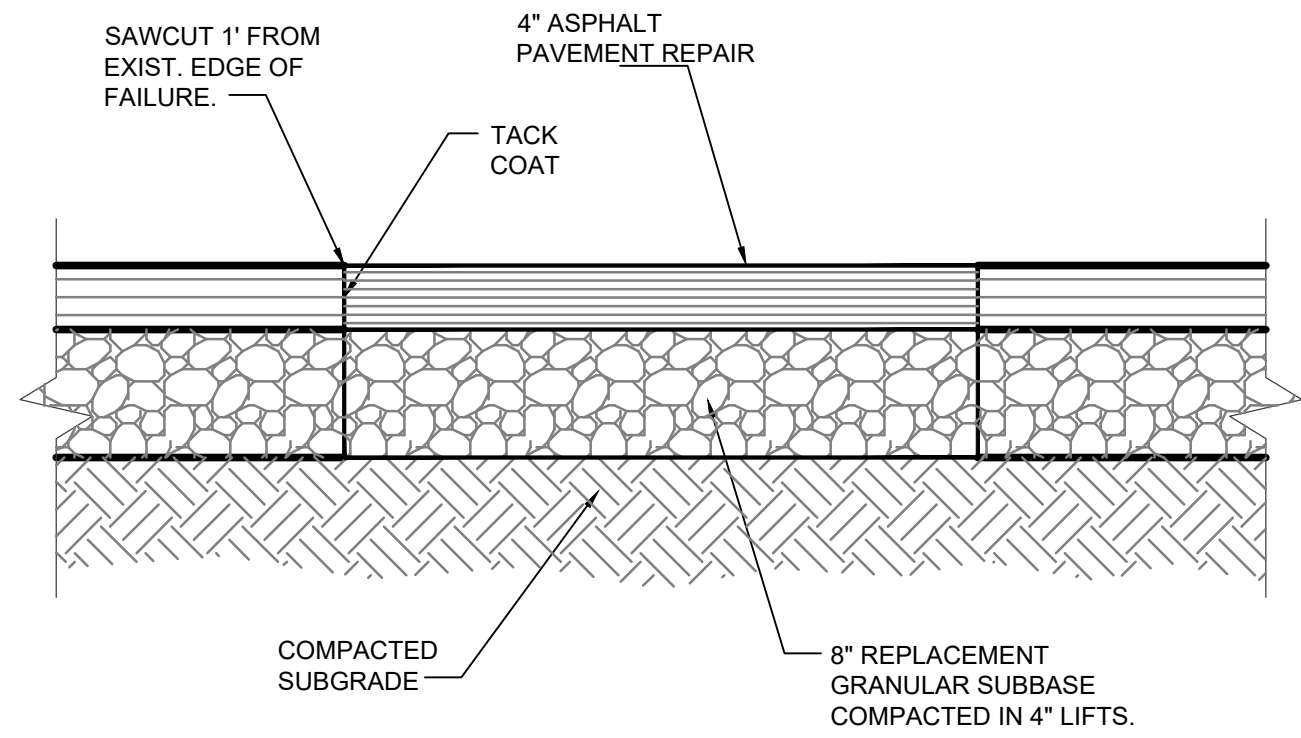
C-101

2 OF 3 SHEETS
9/1/2022

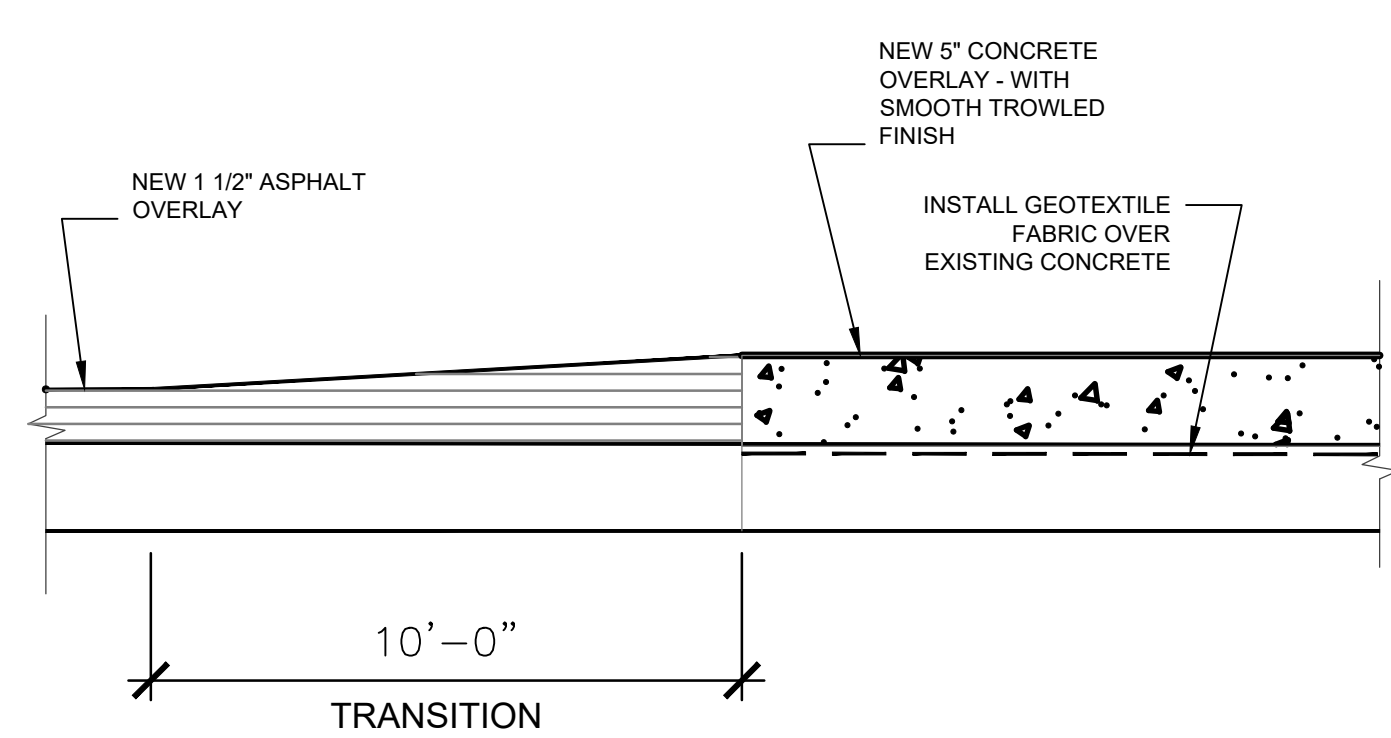




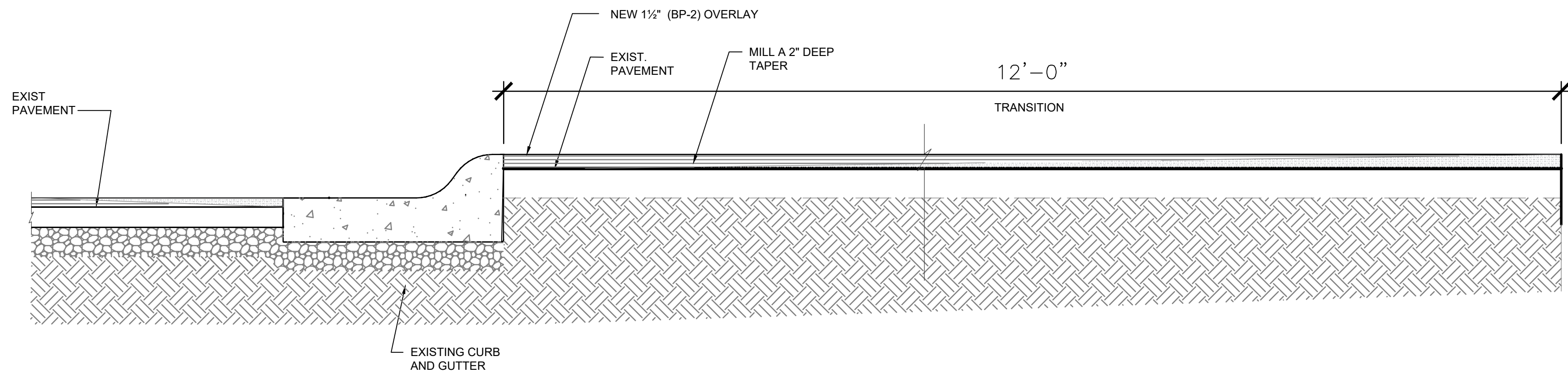
1 TRANSITION DETAIL
SCALE: N.T.S.



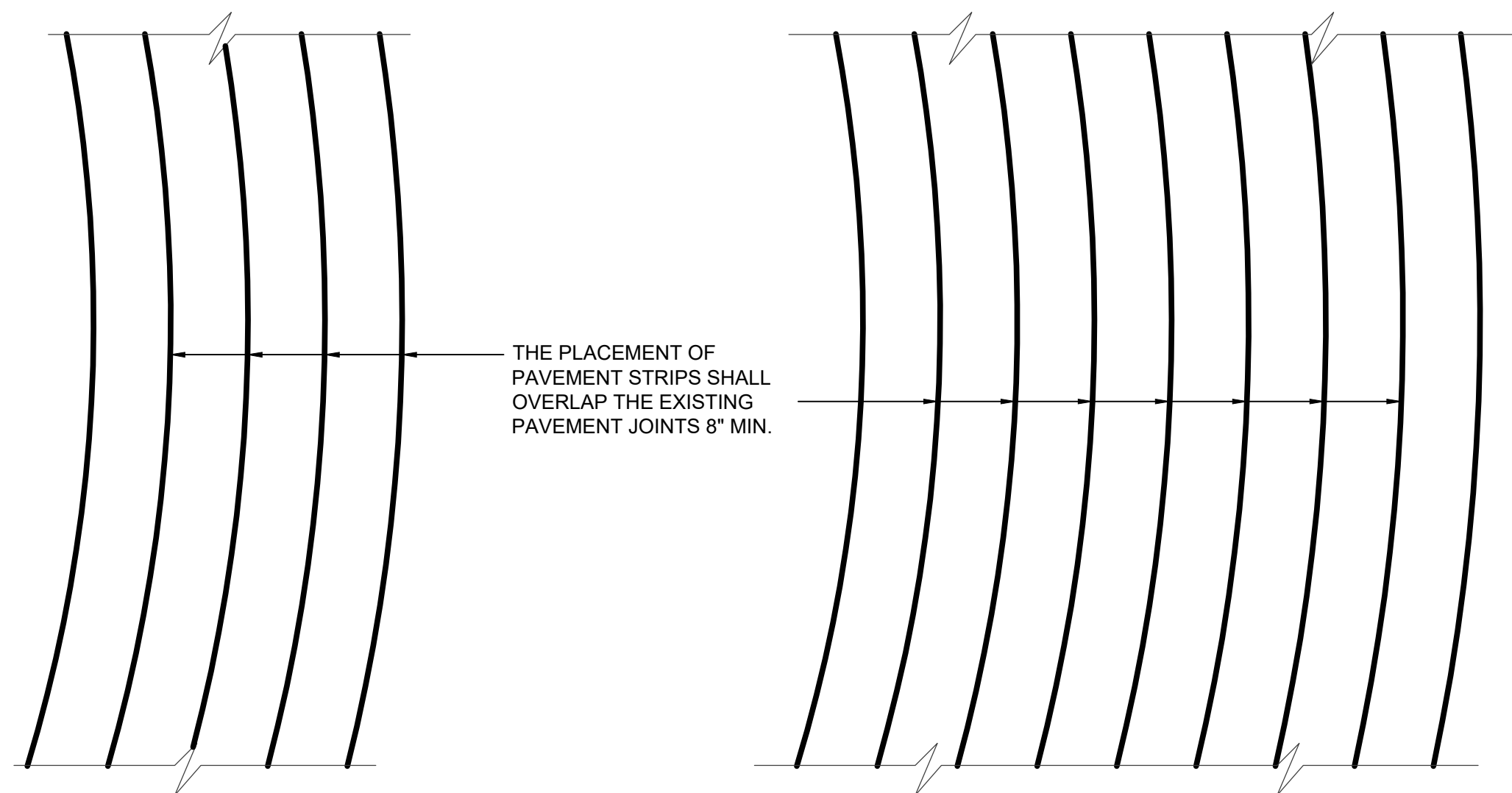
2 PAVEMENT REPAIR DETAIL
SCALE: 1" = 1'-0"



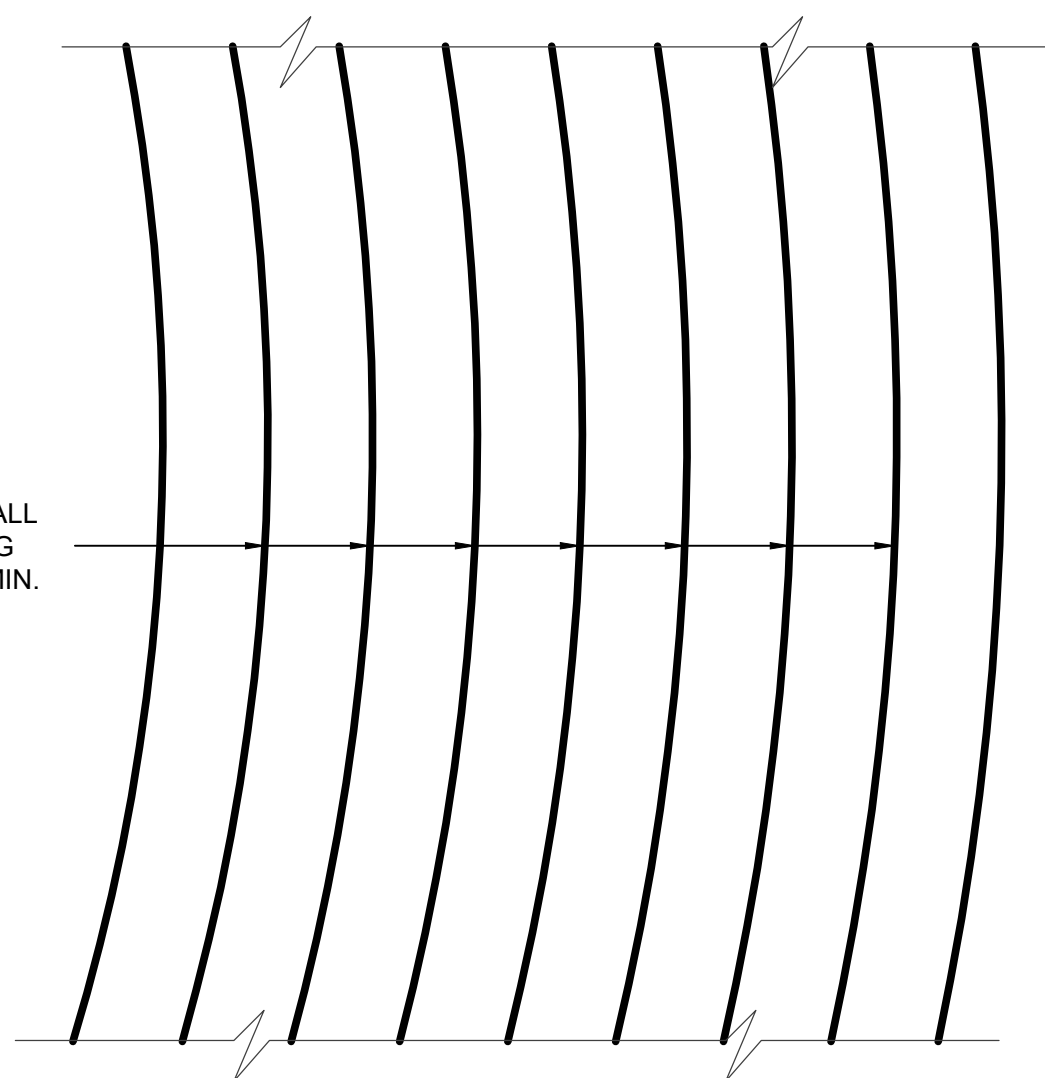
3 TRANSITION DETAIL
SCALE: N.T.S.



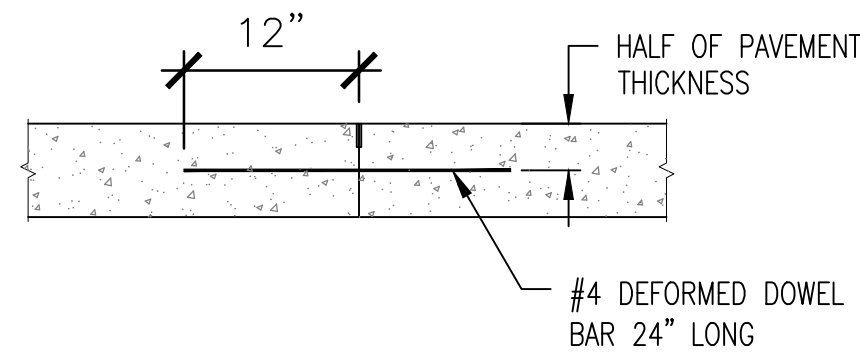
4 CURB AND GUTTER
SCALE: 1" = 1'-0"



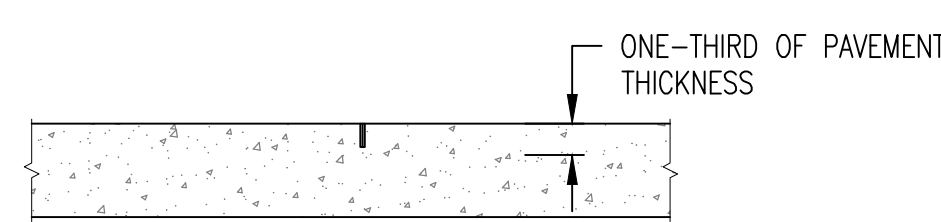
5 TYP. PLAN @ 4 LANES
SCALE: N.T.S.



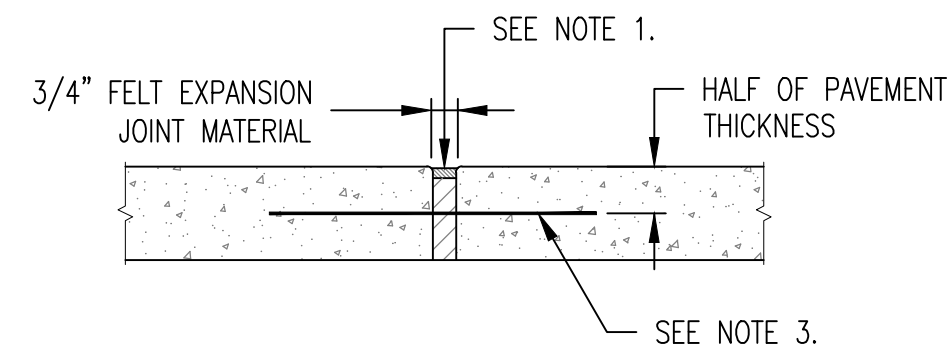
6 TYP. PLAN @ 8 LANES
SCALE: N.T.S.



TYPE "A"
CONSTRUCTION JOINT



TYPE "B"
CONTROL JOINT



TYPE "C"
EXPANSION JOINT

NOTES:

- EXPANSION JOINTS SHALL BE PLACED 50' O.C. EACH WAY AND DRIVE APPROACHES. 3/4" INCH EXPANSION MATERIAL WITH 3/8"x24" SMOOTH DOWELS SHALL BE PLACED AT RADIUS POINTS. THESE DOWELS SHALL BE GREASED AND WRAPPED ON ONE END WITH EXPANSION TUBES.
- REINFORCED JOINTS IN PCC PAVEMENT AS FOLLOWS:
 - TRANSVERSE CONSTRUCTION JOINTS - TIE WITH 1/2"x24" DEFORMED BARS AT 12 INCH CENTERS.
 - LONGITUDINAL CONSTRUCTION JOINTS - TIE WITH 1/2"x24" DEFORMED BARS AT 30 INCH CENTERS.
- INSTALL DOWEL BARS AS SHOWN ON THE PLANS, OR A PARTICULAR DETAIL, OR AS DIRECTED BY THE ENGINEER.
- CONTROL JOINTS SHALL BE PLACED 10' O.C. EACH WAY.

7 TYP. CONCRETE JOINT DETAILS
SCALE: N.T.S.

