

## ADDENDUM NO. 1

TO: PLANS AND SPECIFICATIONS FOR STATE OF MISSOURI

*Crime Lab-Exterior Renovations Troop-H Headquarters Building  
3525 North Belt Highway, St. Joseph, Missouri 64506  
PROJECT NO. R233801*

**Bid Opening Date:** 1:30 PM, September 10, 2024 (Not Changed)

**Bidders are hereby informed that the construction Plans and Specifications are modified as follows:**

### **SPECIFICATION CHANGES:**

1. Table of Contents:
  - a. *MODIFY Section 01211 Allowances*
  - b. *ADD Section 012200 Unit Prices*
  - c. *ADD Section 260519 Low-Voltage Electrical Power Conductors and Cables*
2. Section 004113 – *Bid Form, revised bid form*
3. Division 1:

*Section 012100 – Allowances*

  - a. *ADD paragraph 3.3.B.*

*Section 012200 -Unit Prices*

  - a. *ADD paragraph 3.1.*

Section 260519 – Low-Voltage Electrical Power Conductors and Cables

  - a. *ADD entire section.*

### **DRAWING CHANGES:**

1. Drawing C-105:
  - a. *CLARIFY add alternate #1 note to indicate rip rap and trench drain is included in the base bid.*
2. Drawing C-109:
  - a. *CLARIFY add alternate #1 note to indicate rip rap and trench drain is included in the base bid.*
3. Drawing C-113:
  - a. *CLARIFY add alternate #1 note to indicate rip rap and trench drain is included in the base bid.*
4. Drawing C-117:
  - a. *CLARIFY add alternate #1 note to indicate rip rap and trench drain is included in the base bid.*

5. Drawing E-200:
  - a. CLARIFY all new parking lot light poles are to have two fixtures with added note.
  - b. REVISE general note #4 to replace all existing electrical conduit and wiring.
6. Drawing E-300:
  - a. ADD item #12 in summary of quantities table for Parking Lot Area Light Poles
7. Drawing E-301:
  - a. ADD "or approved equal" to the light pole specification product information.

#### **BIDDER QUESTIONS AND RESPONSES:**

1. Are we to reuse the existing underground cable for new electrical installation? I had two of my guys that have serviced this over the years and the existing cable has had many repairs/splices to it and would not be a good situation to move forward with this for the new installation.

*Response: All existing electrical conduit and wiring which is broken or not functioning shall be replaced as approved by Engineer and Owner. A unit cost has been added to the Bid Form.*

2. If you reference Sheet Number E-300; D. NEW- Parking Area Light- the new parking area light shows a single headed light fixture while the final product is to be a double headed fixture, thus arose the question: Would you like the Parking Area Light to have a Fixture on each side of the pole, creating a "double headed" fixture? If so, we will need to order six (6) of the Parking Area Lights.

*Response: That is correct. You will need (6) fixtures for the (3) Poles in the parking lot.*

3. If you reference Sheet Number E-301; Pole Specifications: Catalog NO. P200-APR-G-M00-AB- C/W 140(25/40); Will those new Parking Area Light Poles, be provided or need to be purchased by the contractor/subcontractor? The current poles will not support a double headed fixture.

*Response: Yes, they need to be purchased as well and do not come with the Galleon II fixtures.*

#### **GENERAL:**

1. Copy of Attendance Record is attached for information only. Changes to, or clarification of, the Bid Documents are only made as issued in the Addenda.
2. Please contact Mandy Roberson, Contract Specialist, at 573-522-0074 or [Mandy.Roberson@oa.mo.gov](mailto:Mandy.Roberson@oa.mo.gov) for questions about bidding procedures, MBE\WBE\SDVE Goals, and other submittal requirements.
3. The deadline for technical questions is September 3, 2024, at Noon.
4. Changes to, or clarification of, the bid documents are only made as issued in the addenda.
5. All correspondence with respect to this project must include the State of Missouri project number as indicated above.
6. Current Plan Holders list available online at: [Bid Listing/ Electronic Plans \(Projects Currently Bidding\) | Office of Administration \(mo.gov\)](#) R2338-01-Crime Lab-Exterior Renovations - Troop-H Headquarters, St. Joseph
7. Prospective Bidders contact American Document Solutions, 1400 Forum Blvd Suite

7A, Columbia MO 65203, 573-446-7768 to order official plans and specifications.

8. All bids shall be submitted on the bid form without additional terms and conditions, modifications, or stipulations. Each space on the bid form shall be properly filled including a bid amount for the alternates. Failure to do so will result in rejection of the bid.
9. MBE/WBE/SDVE participation requirements can be found in DIVISION 00. The MBE/WBE/SDVE participation goals are 10%/10%/3%, respectively. Only certified firms as of the bid opening date can be used to satisfy the MBE/WBE/SDVE participation goals for this project. If a bidder is unable to meet a participation goal, a Good Faith Effort Determination Form must be completed. Failure to complete this process will result in rejection of the bid.

**ATTACHMENTS:**

1. Section 000110 Table of Contents
2. Section 004113 Bid form
3. Section 004322 Unit Price Form
4. Section 012100 Allowances
5. Section 012200 Unit Prices
6. Section 260519 Low-Voltage Electrical Power Conductors and Cables
7. Pre-Bid Sign-in Sheet
8. Drawings C-105, C-109, C-113, C-117, E-200, E-300 and E-301

By the Order of:

Fred L. Decker Jr., Project Manager  
Division of Facilities Management,  
Design and Construction  
September 5, 2024

**END ADDENDUM NO. 1**

**TABLE OF CONTENTS**

<b>SECTION</b>	<b>TITLE</b>	<b>NUMBER OF PAGES</b>
<b>DIVISION 00 – PROCUREMENT AND CONTRACTING INFORMATION</b>		
<b>000000</b>	<b>INTRODUCTORY INFORMATION</b>	
000101	Project Manual Cover	1
000107	Professional Seals and Certifications	3
000110	Table of Contents	2
000115	List of Drawings	2
<b>001116</b>	<b>INVITATION FOR BID (IFB) plus Missouri Buys instructions and special notice</b>	2
<b>002113</b>	<b>INSTRUCTIONS TO BIDDERS (Includes MBE/WBE/SDVE Information)</b>	8
003144	MBE/WBE/SDVE Directory	1
<b>**The following documents may be found on MissouriBUYS at <a href="https://missouribuys.mo.gov/">https://missouribuys.mo.gov/</a>**</b>		
<b>004000</b>	<b>PROCUREMENT FORMS &amp; SUPPLEMENTS</b>	
004113	Bid Form	*
004322	Unit Prices Form	*
004336	Proposed Subcontractors Form	*
004337	MBE/WBE/SDVE Compliance Evaluation Form	*
004338	MBE/WBE/SDVE Eligibility Determination Form for Joint Ventures	*
004339	MBE/WBE/SDVE Good Faith Effort (GFE) Determination Forms	*
004340	SDVE Business Form	*
004541	Affidavit of Work Authorization	*
004545	Anti-Discrimination Against Israel Act Certification form	*
<b>005000</b>	<b>CONTRACTING FORMS AND SUPPLEMENTS</b>	
005213	Construction Contract	3
005414	Affidavit for Affirmative Action	1
006113	Performance and Payment Bond	2
006325	Product Substitution Request	2
006519.16	Final Receipt of Payment and Release Form	1
006519.18	MBE/WBE/SDVE Progress Report	1
006519.21	Affidavit of Compliance with Prevailing Wage Law	1
<b>007000</b>	<b>CONDITIONS OF THE CONTRACT</b>	
007213	General Conditions	20
007300	Supplementary Conditions	1
007346	Wage Rate	4
<b>DIVISION 1 - GENERAL REQUIREMENTS</b>		
011000	Summary of Work	3
012100	Allowances	2
012200	Unit Prices	2
012300	Alternates	1
012600	Contract Modification Procedures	2
013100	Coordination	4
013115	Project Management Communications	4
013200	Schedule – Bar Chart	4
013300	Submittals	6
013513.25	Site Security and Health Requirements (MSHP)	6
015000	Construction Facilities and Temporary Controls	7
017400	Cleaning	3

## TECHNICAL SPECIFICATIONS INDEX:

### DIVISION 04 – MASONRY

040120	Brick Masonry Restoration and Cleaning	17
040121	Task Items – Masonry Restoration	4

### DIVISION 05 – STEEL

050110	Steel Field Re-Coating	4
055213	Pipe and Tube Railings	6

### DIVISION 07 – THERMAL AND MOISTURE PROTECTION

071900	Water Repellents	4
--------	------------------	---

### DIVISION 26 – ELECTRICAL

260519	Low-Voltage Electrical Power Conductors and Cables	3
260526	Grounding and Bonding for Electrical Systems	3
260529	Hangers and Supports for Electrical Systems	4
260533	Raceways and Boxes for Electrical Systems	8
260544	Sleeves and Sleeve Seals for Electrical Raceways and Cabling	3
260553	Identification for Electrical Systems	7
262726	Wiring Devices	4
262813	Fuses	2
265619	LED Exterior Lighting	7

### DIVISION 31 – EARTHWORK

311000	Site Clearing	8
312000	Earth Moving	13

### DIVISION 32 – EXTERIOR IMPROVEMENTS

321216	Asphalt Paving	7
321313	Concrete Paving	13
321373	Concrete Paving Joint Sealants	5
329200	Turf and Grasses	7

### APPENDIX

A – STORM WATER POLLUTION PREVENTION PLAN	64
---	----

Bid Time: 1:30 PM

Bid Date: \_\_\_\_\_

### SECTION 004113 - BID FORM

#### 1.0 BID

A. From:

\_\_\_\_\_

(Bidder's Name)

herein after called the "**Bidder**".

B. To:

Director, Division of Facilities Management, Design and Construction  
Room 730, Harry S Truman State Office Building  
301 West High Street  
Jefferson City, Missouri 65101

herein after called the "**Owner**."

C. For:

Crime Lab-Exterior Renovations Troop-H Headquarters Building  
Troop-H Headquarters  
St. Joseph, Missouri

D. Project Number:

R2338-01

hereinafter called the "**Work**."

E. Documents:

The undersigned, having examined and being familiar with the local conditions affecting the work and with the complete set of contract documents, including the Drawings, the Invitation For Bid, Instructions To Bidders, Statement of Bidders Qualifications, General Conditions, Supplement to General Conditions, and the technical specifications, including: addenda number \_\_\_\_\_ through \_\_\_\_\_ hereby proposes to perform the Work for the following:

F. Bid Amount:

\_\_\_\_\_ Dollars (\$ \_\_\_\_\_)

G. Allowances:

Included within the completion period for this Project is ten (10) "bad weather" days. See Section 012100 for details.

H. Alternates:

Alternate No. 1: Description.

Add grading and asphalt paving as indicated on the Drawings labeled "Add Alternate # 1".

\_\_\_\_\_ Dollars (\$ \_\_\_\_\_)

#### 2.0 MBE/WBE/SDVE PERCENTAGE OF PARTICIPATION PROJECT GOALS

A. This project's specific goals are: **MBE 10%**, **WBE 10%**, and **SDVE 3%**. NOTE: Only MBE/WBE firms certified by the State of Missouri Office of Equal Opportunity, and SDVE(s) meeting the requirements of Section 34.074, RSMo, and 1 CSR 30-5.010, as of the date of bid opening can be used to satisfy the MBE/WBE/SDVE participation goals for this project.

#### 3.0 BID BOND

A. Accompanying the bid is: \_\_\_ 5% Bid Bond or \_\_\_ Cashier's Check/Bank Draft for 5% of base bid that is payable without condition to the Division of Facilities Management, Design and Construction, State of Missouri, as per Article 5 of "Instructions To Bidders".

**SECTION 004322 - UNIT PRICES FORM**

**PROJECT NUMBER: R2338-01**

**1.0 Description**

- A. For changing specified quantities of work from those indicated by the contract drawings and specifications, upon written instructions of Owner, the following unit prices shall prevail. The unit prices include all labor, overhead and profit, materials, equipment, appliances, bailing, shoring, shoring removal, etc., to cover the finished work of the several kinds of work called for. Only a single unit price shall be given and it shall apply for either MORE or LESS work than that shown on the drawings and called for in the specifications or included in the Base Bid. In the event of more or less units than so indicated or included during construction the total contract price shall be decreased as appropriate or increased by contract change in accordance with General Conditions Article 4.1.

**2.0 Unit Prices**

A. Unit Price No. 1 – 2” Conduit:

- 1. Description: Install new 2” electrical conduit according to Division 26 Section “260533 Raceways and Boxes for Electrical Systems.”
- 2. Unit of Measurement: LF (linear feet).
- 3. Base Bid Quantity: 1500 LF

\$ \_\_\_\_\_ per cubic foot

B. Unit Price No. 2 – Electrical Wire:

- 1. Description: Install new electrical wire for site lighting systems according to Division 26 Section “260519 Low-Voltage Electrical Power Conductors and Cables.”
- 2. Unit of Measurement: LF (linear feet).
- 3. Alternate No. 1 Quantity: 3000 LF

\$ \_\_\_\_\_ per square foot

C. Unit Price No. 3 – Grounding Wire:

- 1. Description: Install new grounding wire for site lighting systems according to Division 26 Section “260519 Low-Voltage Electrical Power Conductors and Cables.”
- 2. Unit of Measurement: LF (linear feet).
- 3. Alternate No. 1 Quantity: 1500 LF

\$ \_\_\_\_\_ per square foot

## **SECTION 012100 – ALLOWANCES**

### **PART 1 - GENERAL**

#### **1.1 RELATED DOCUMENTS**

- A. Drawings and general provisions of the Contract including General and Supplementary Conditions and other Division 1 Specification Sections apply to this Section.

#### **1.2 SUMMARY**

- A. This Section includes administrative and procedural requirements governing allowances.
  - 1. Certain items are specified in the Contract Documents by allowances. Allowances have been established in lieu of additional requirements and to defer selection of actual materials and equipment to a later date when additional information is available for evaluation. If necessary, additional requirements will be issued by Change Order.
- B. Types of allowances include the following:
  - 1. Lump-sum allowances.
  - 2. Weather allowances.
- C. Related Sections include the following:
  - 1. Division 1 Section "Contract Modification Procedures" for procedures for submitting and handling Change Orders for allowances.
  - 2. Division 1 Section "Unit Prices" for procedures for using unit prices.

#### **1.3 WEATHER ALLOWANCE**

- A. Included within the completion period for this project are a specified number of “bad weather” days (see Schedule of Allowances).
- B. The Contractor’s progress schedule shall clearly indicate the bad weather day allowance as an “activity” or “activities”. In the event weather conditions preclude performance of critical work activities for 50% or more of the Contractor’s scheduled workday, that day shall be declared unavailable for work due to weather (a “bad weather” day) and charged against the above allowance. Critical work activities will be determined by review of the Contractor’s current progress schedule.
- C. The Contractor’s Representative and the Construction Representative shall agree monthly on the number of “bad weather” days to be charged against the allowance. This determination will be documented in writing and be signed by the Contractor and the Construction Representatives. If there is a failure to agree on all or part of the “bad weather” days for a particular month, that disagreement shall be noted on this written document and signed by each party’s representative. Failure of the Contractor’s representative to sign the “bad weather” day documentation after it is presented, with or without the notes of disagreement, shall constitute agreement with the “bad weather” day determination contained in that document.
- D. There will be no modification to the time of contract performance due solely to the failure to deplete the “bad weather” day allowance.



- E. Once this allowance is depleted, a no cost Change Order time extension will be executed for “bad weather” days, as defined above, encountered during the remainder of the Project.

#### **1.4 SELECTION AND PURCHASE**

- A. Purchase products and systems selected by Designer from the designated supplier.

#### **1.5 SUBMITTALS**

- A. Submit proposals for purchase of products or systems included in allowances, in the form specified for Change Orders.
- B. Submit invoices or delivery slips to show actual quantities of materials delivered to the site for use in fulfillment of each allowance.
- C. Coordinate and process submittals for allowance items in same manner as for other portions of the Work.

#### **1.6 COORDINATION**

- A. Coordinate allowance items with other portions of the Work. Furnish templates as required to coordinate installation.

#### **1.7 ALLOWANCES**

- A. Unless otherwise indicated, Contractor's costs for receiving and handling at Project site, labor, installation, overhead and profit, and similar costs related to products and materials under allowance shall be included as part of the Contract Sum and not part of the allowance.

### **PART 2 - PRODUCTS (Not Used)**

### **PART 3 - EXECUTION**

#### **3.1 EXAMINATION**

- A. Examine products covered by an allowance promptly on delivery for damage or defects. Return damaged or defective products to manufacturer for replacement.

#### **3.2 PREPARATION**

- A. Coordinate materials and their installation for each allowance with related materials and installations to ensure that each allowance item is completely integrated and interfaced with related work.

#### **3.3 SCHEDULE OF ALLOWANCES**

- A. Weather Allowance: Included within the completion period for this Project is ten (10) “bad weather” days.

- B. Unit Price Allowances:

1. Unit Price No. 1 – 2” Conduit: 1500 LF
2. Unit Price No. 2 – Electrical Wiring: 3000 LF

3. Unit Price No. 3 – Grounding Wire: 1500 LF

**END OF SECTION 012100**

## **SECTION 012200 – UNIT PRICES**

### **PART 1 - GENERAL**

#### **1.1 RELATED DOCUMENTS**

- A. Drawings and general provisions of the Contract including General and Supplementary Conditions and other Division 1 Specification Sections apply to this Section.
- B. Quantities of Units to be included in the Base Bid are indicated in Section 004322 – Unit Prices.

#### **1.2 SUMMARY**

- A. This Section includes administrative and procedural requirements for Unit Prices.
- B. Related Sections include the following:
  - 1. Division 1 Section "Allowances" for procedures for using Unit Prices to adjust quantity allowances.
  - 2. Division 1 Section "Contract Modification Procedures" for procedures for submitting and handling Change Orders.

#### **1.3 DEFINITIONS**

- A. Unit Price is an amount proposed by bidders, stated on the Bid Form Attachment 004322 a price per unit of measurement for materials or services added to or deducted from the Contract Sum by appropriate modification, if estimated quantities of Work required by the Contract Documents are increased or decreased.

#### **1.4 PROCEDURES**

- A. Unit Prices include all necessary material plus cost for delivery, installation, insurance, [applicable taxes, ]overhead, and profit.
- B. Measurement and Payment: Refer to individual Specification Sections for work that requires establishment of Unit Prices. Methods of measurement and payment for Unit Prices are specified in those Sections.
- C. Owner reserves the right to reject Contractor's measurement of Work in-place that involves use of established Unit Prices and to have this work measured, at Owner's expense, by an independent surveyor acceptable to Contractor.
- D. List of Unit Prices: A list of Unit Prices is included in Part 3. Specification Sections referenced in the schedule contain requirements for materials described under each Unit Price.

**PART 2 - PRODUCTS (Not Used)**

**PART 3 - EXECUTION**

**3.1 LIST OF UNIT PRICES**

- A. Unit Price No. 1 – 2” Conduit:
  - 1. Description: Install new 2” electrical conduit according to Division 26 Section “260533 Raceways and Boxes for Electrical Systems.”
  - 2. Unit of Measurement: LF (linear feet).
  - 3. Base Bid Quantity: 1500 LF
  
- B. Unit Price No. 2 – Electrical Wire:
  - 1. Description: Install new electrical wire for site lighting systems according to Division 26 Section “260519 Low-Voltage Electrical Power Conductors and Cables.”
  - 2. Unit of Measurement: LF (linear feet).
  - 3. Base Bid Quantity: 3000 LF
  
- C. Unit Price No. 3 – Grounding Wire:
  - 1. Description: Install new grounding wire for site lighting systems according to Division 26 Section “260519 Low-Voltage Electrical Power Conductors and Cables.”
  - 2. Unit of Measurement: LF (linear feet).
  - 3. Base Bid Quantity: 1500 LF

**END OF SECTION 012200**

## **SECTION 260519 - LOW-VOLTAGE ELECTRICAL POWER CONDUCTORS AND CABLES**

### **PART 1 - GENERAL**

#### **1.1 SUMMARY**

- A. Section Includes:
  - 1. Copper wire rated 600 V or less.
  - 2. Metal-clad cable, Type MC, rated 600 V or less.
  - 3. Connectors, splices, and terminations rated 600 V and less.

#### **1.2 ACTION SUBMITTALS**

- A. Product Data: For each type of product.
- B. Product Schedule: Indicate type, use, location, and termination locations.

#### **1.3 INFORMATIONAL SUBMITTALS**

- A. Field quality-control reports.

### **PART 2 - PRODUCTS**

#### **2.1 COPPER WIRE**

- A. Description: Flexible, insulated and uninsulated, drawn copper current-carrying conductor with an overall insulation layer or jacket, or both, rated 600 V or less. Belden, Southwire, Alpha or approved equal.
- B. Standards:
  - 1. Listed and labeled as defined in NFPA 70, by a qualified testing agency, and marked for intended location and use.
  - 2. RoHS compliant.
  - 3. Conductor and Cable Marking: Comply with wire and cable marking according to UL's "Wire and Cable Marking and Application Guide."
- C. Conductors: Copper, complying with ASTM B 3 for bare annealed copper and with ASTM B 8 for stranded conductors.
- D. Conductor Insulation:
  - 1. Type THHN and Type THWN-2: Comply with UL 83.

#### **2.2 CONNECTORS AND SPLICES**

- A. Description: Factory-fabricated connectors, splices, and lugs of size, ampacity rating, material, type, and class for application and service indicated; listed and labeled as

defined in NFPA 70, by a qualified testing agency, and marked for intended location and use.

- B. Jacketed Cable Connectors: For steel and aluminum jacketed cables, zinc die-cast with set screws, designed to connect conductors specified in this Section.
- C. Lugs: One piece, seamless, designed to terminate conductors specified in this Section.
  - 1. Material: Copper.
  - 2. Type: One hole with standard barrels.
  - 3. Termination: Compression.

## **PART 3 - EXECUTION**

### **3.1 CONDUCTOR MATERIAL APPLICATIONS**

- A. Feeders: Copper; solid for No. 10 AWG and smaller; stranded for No. 8 AWG and larger.
- B. Branch Circuits: Copper. Solid for No. 10 AWG and smaller; stranded for No. 8 AWG and larger.
- C. Branch Circuits: Copper. Solid for No. 12 AWG and smaller; stranded for No. 10 AWG and larger.
- D. Power-Limited Control: Solid for No. 12 AWG and smaller.

### **3.2 CONDUCTOR INSULATION AND MULTICONDUCTOR CABLE APPLICATIONS AND WIRING METHODS**

- A. Feeders Concealed in Ceilings, Walls, Partitions, and Crawlspace:  
Type THHN/THWN-2, single conductors in raceway.
- B. Feeders Concealed in Concrete, below Slabs-on-Grade, and Underground:  
Type THHN/THWN-2, single conductors in raceway.

### **3.3 INSTALLATION OF CONDUCTORS AND CABLES**

- A. Conceal cables in finished walls, ceilings, and floors unless otherwise indicated.
- B. Complete raceway installation between conductor and cable termination points according to Section 26 05 00.
- C. Use manufacturer-approved pulling compound or lubricant where necessary; compound used must not deteriorate conductor or insulation. Do not exceed manufacturer's recommended maximum pulling tensions and sidewall pressure values.
- D. Use pulling means, including fish tape, cable, rope, and basket-weave wire/cable grips, that will not damage cables or raceway.
- E. Install exposed cables parallel and perpendicular to surfaces of exposed structural members, and follow surface contours where possible.

### **3.4 CONNECTIONS**

- A. Tighten electrical connectors and terminals according to manufacturer's published torque-tightening values. If manufacturer's torque values are not indicated, use those specified in UL 486A-486B.
- B. Make splices, terminations, and taps that are compatible with conductor material and that possess equivalent or better mechanical strength and insulation ratings than unspliced conductors.
- C. Wiring at Outlets: Install conductor at each outlet, with at least 6 inches of slack.

### **3.5 IDENTIFICATION**

- A. Identify and color-code conductors and cables according to Section 26 05 53 "Identification for Electrical Systems."
- B. Identify each spare conductor at each end with identity number and location of other end of conductor, and identify as spare conductor.

### **3.6 SLEEVE AND SLEEVE-SEAL INSTALLATION FOR ELECTRICAL PENETRATIONS**

- A. Install sleeves and sleeve seals at penetrations of exterior floor and wall assemblies. Comply with requirements in Section 26 05 44 "Sleeves and Sleeve Seals for Electrical Raceways and Cabling."

**END OF SECTION 260519**

Pre-Bid Meeting Attendance Sheet  
Troop H Headquarters &  
Crim Lab-Exterior Renovations  
St. Joseph, Missouri

Project No. R2338-01  
August 20, 2024 10:30AM

Name & Title	Company Name & Type of Contracting	MBE/WBE/SDVE Status	Phone	E-Mail Address of Attendee & E-Mail Address of Individual filling out Bid Documents
DAVID T. FORD MANAGING DIRECTOR	WALTER P MOORE		816 701-2118	PFORDD@WALTERPMOORE.COM
BRITNEY GORAN OWNER + CEO	REI DEVELOPMENT	WBE	573, 864-5061	CONNECT@REIDEVELOP.COM
DAVID ACKLEY PROJECT LEADER	BRIS		816-400-2316	DAVID.ACKLEY@BROWNARBORET.COM
Lindsay Fida graduate engineer	Walter P Moore			lindsay@walterpmoore.com
MIKE HARKE PROJECT MANAGER	WALTER P MOORE		816-701-2117	mharke@walterpmoore.com
Wayne Loftin Project Manager	MTS Contracting		816-988-3279	WLoftin@MTSContracting.com



Pre-Bid Meeting Attendance Sheet  
Troop H Headquarters &  
Crim Lab-Exterior Renovations  
St. Joseph, Missouri

Project No. R2338-01  
August 20, 2024 10:30AM

Name & Title	Company Name Type of Contracting	MBE/WBE/ SDVE Status	Phone	E-Mail Address of Attendee and E-Mail Address of Individual filling out Bid Documents
Drew Gray P.M.	E.L. Crawford		816-233-2576	drew@elcrawford.com
Casey Lance P.M.	ELCC		816 233-2576	Casey@elcrawford.com
Dwane Harrington President	Pinnacle Electric		816-279-1800	dwane@pinnacleelectricinc.com
Paul Loftin Facilities Mgr	MSHP		573-568-4269	Paul.loftin@mshp.dps.mo.gov
FRED L. DECKER JR. PROJECT MANAGER	DA-FMDC		573-751-8521	fred.decker@da.mo.gov



6161.7011.2100

OFFICE OF ADMINISTRATION  
DIVISION OF FACILITIES  
MANAGEMENT,  
DESIGN AND CONSTRUCTION

MISSOURI STATE HIGHWAY  
PATROL

CRIME LAB - EXTERIOR  
RENOVATIONS  
TROOP H HEADQUARTERS  
BUILDING

ST. JOSEPH, MISSOURI  
PROJECT # R-2338-01  
SITE # 6009  
FACILITY # 813609002 &  
813609003

REVISION: ADDITIONAL  
DATE: 08/20/14  
REVISION: 08/20/14  
DATE: 08/20/14  
REVISION: 08/20/14  
DATE: 08/20/14  
ISSUE DATE:

CAD DWG FILE: C-103.dwg  
CREATED BY: JHT  
CHECKED BY: JHT  
DESIGNED BY: JHT

SHEET TITLE:  
DEMOLITION  
PLAN

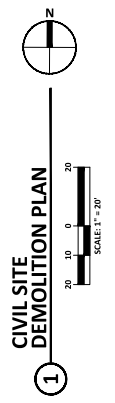
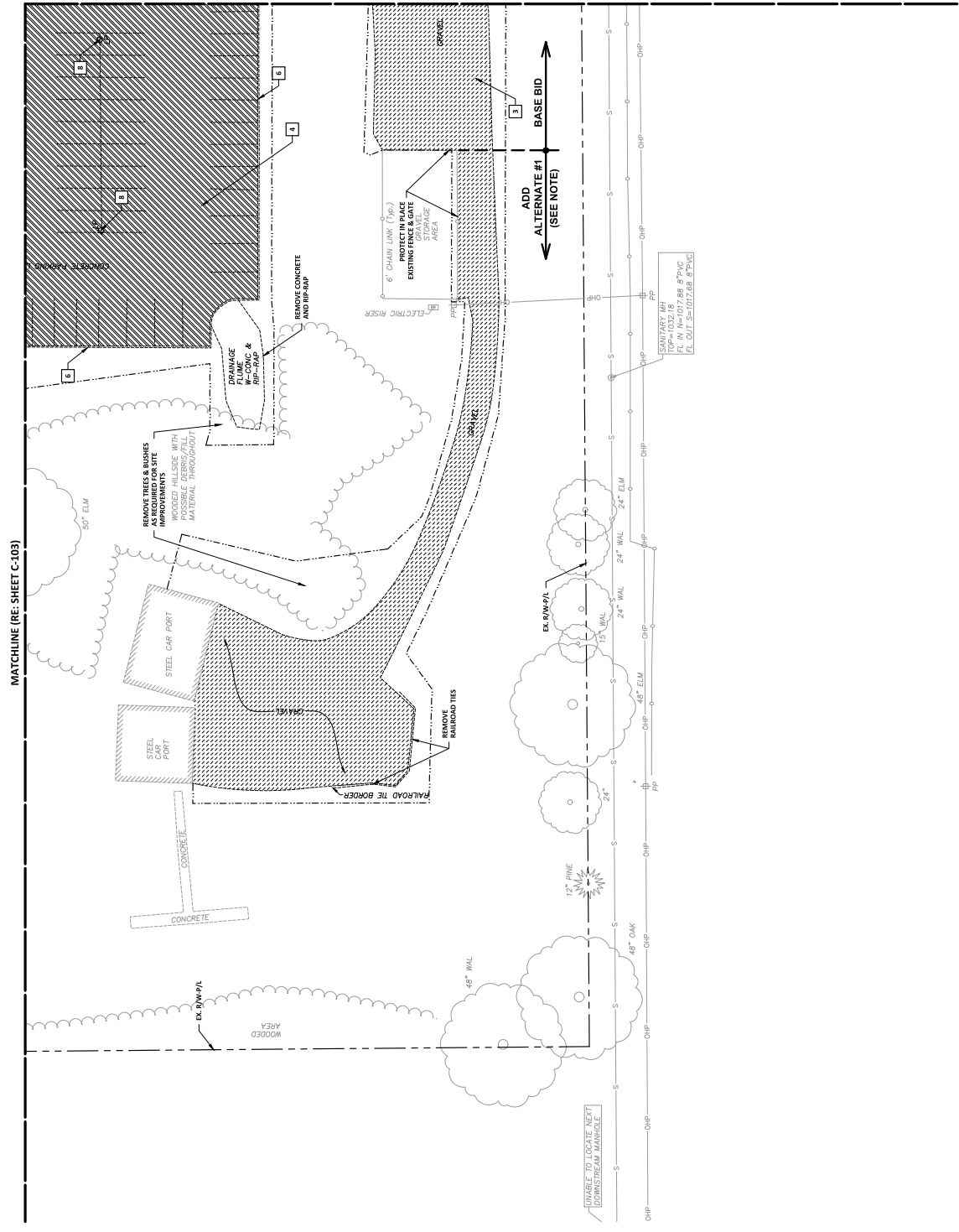
SHEET NUMBER:  
C-105  
7 OF 35 SHEETS  
03/28/2014

**DEMOLITION LEGEND & KEYNOTES**

- ✕ - REMOVE TREE AND BUSHES
- Ⓢ - PROTECT TREE
- Ⓢ - APPROXIMATE PROJECT/GRADING LIMITS
- - INDICATES ITEMS TO BE REMOVED
- 1 - SAWCUT
- 2 - REMOVE ASPHALT PAVEMENT
- 3 - REMOVE GRAVEL
- 4 - REMOVE CONCRETE PAVEMENT
- 5 - REMOVE WALK
- 6 - REMOVE CURB
- 7 - REMOVE AND RELOCATE SIGN (RE ELECTRICAL PLANS)
- 8 - REMOVE & REPLACE LIGHT POLE (RE ELECTRICAL PLANS)
- 9 - REMOVE & REPLACE LIGHTING (RE ELECTRICAL PLANS)
- 10 - REMOVE STORM SEWER PIPING

**NOTES:**  
1. NOTES & LOCATION OF EXISTING UTILITIES SYSTEM ARE UNKNOWN AND NOT SHOWN. PROTECT EXISTING SYSTEM WHERE POSSIBLE & REPLACE SYSTEM WHERE NECESSARY.

**ADD ALTERNATE #1 NOTE:**  
ADD ALTERNATE INCLUDES REMOVAL OF EXISTING GRAVEL AND ASPHALT PAVEMENT AND TRUCK DRUM INCLUDED IN BASE BID.





816.701.2100

ST. JOSEPH, MISSOURI

PROJECT # R-2338-01

SITE # 6009

FACILITY # 815609002 &

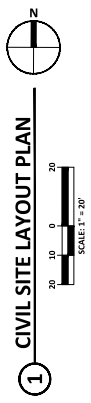
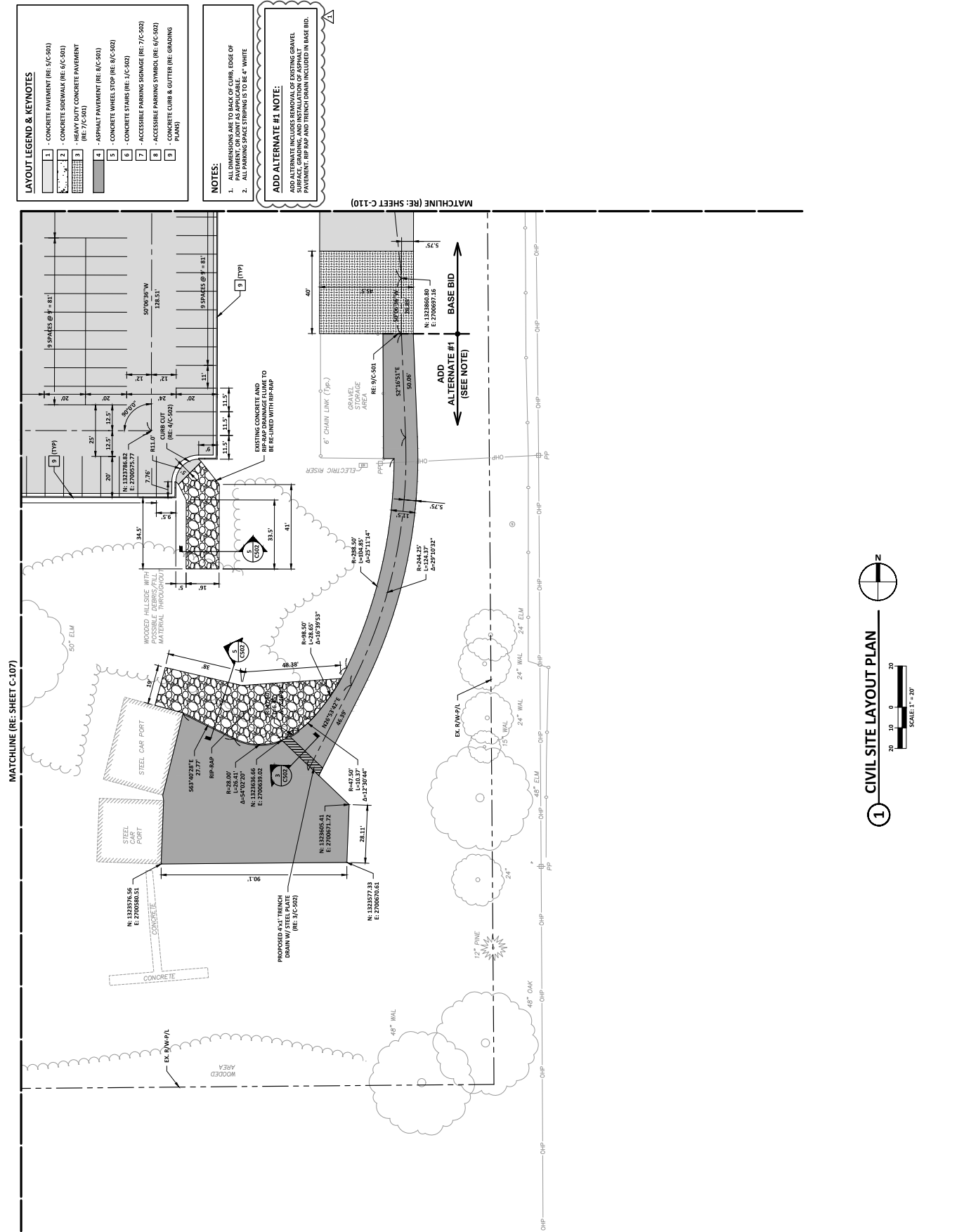
815609003

REVISION: ADDITIONAL  
DATE: 08/11/2024  
REVISION: 08/11/2024  
REVISION: 08/11/2024  
REVISION: 08/11/2024  
DATE: 08/11/2024  
ISSUE DATE:

CAD DWG FILE: C-109.dwg  
CREATED BY: JMT  
CHECKED BY: JMT  
DESIGNED BY: JMT

SHEET TITLE:  
CIVIL SITE  
LAYOUT PLAN

SHEET NUMBER:  
**C-109**  
11 OF 35 SHEETS  
03/28/2024





REVISION:	ADD: (11/16/21)
DATE:	11/16/21
DESIGNED BY:	YHP
CHECKED BY:	YHP
DATE:	
ISSUE DATE:	

CAD DWG FILE: C-113.dwg  
CIVIL SITE PLAN  
CHECKED BY: YHP  
DESIGNED BY: YHP

SHEET TITLE:

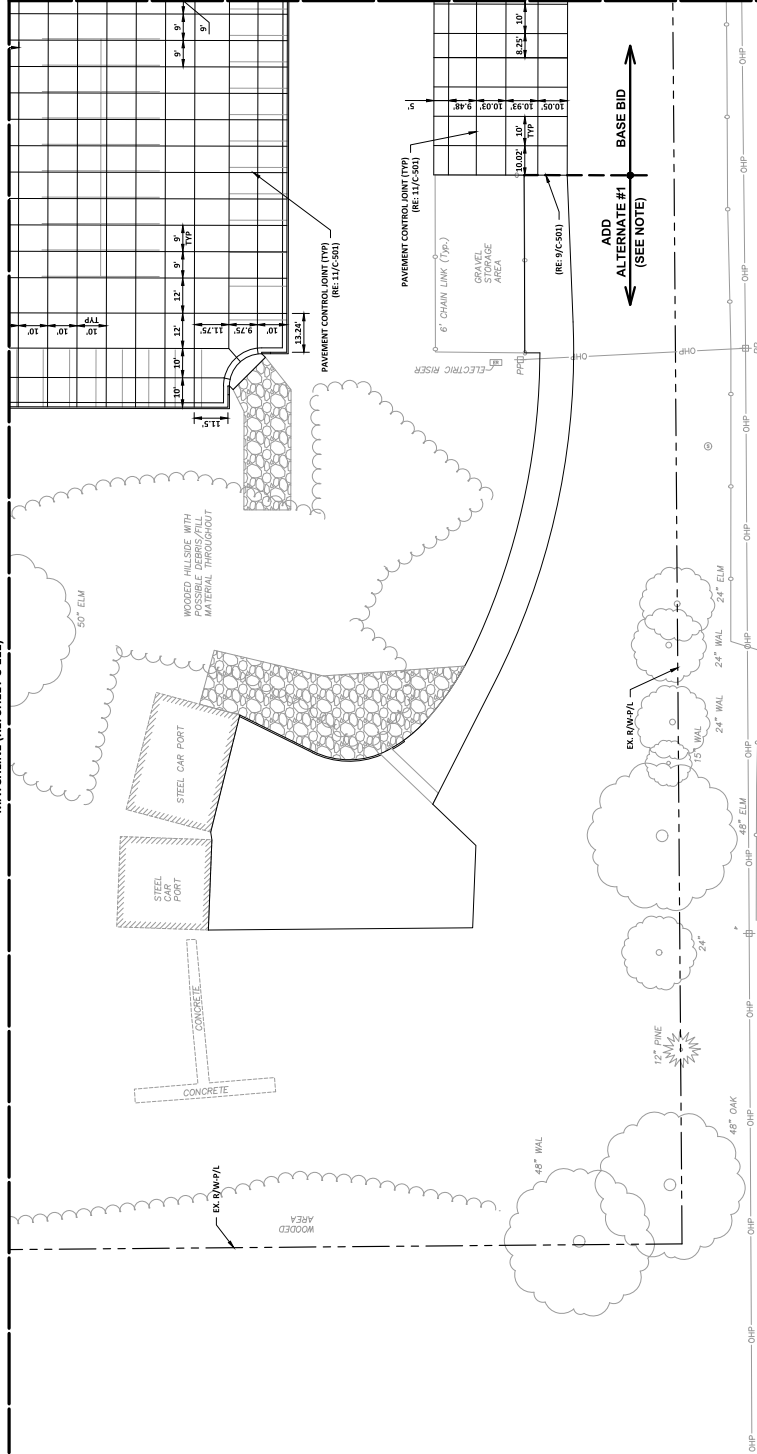
CIVIL SITE  
PAVEMENT JOINT  
PLAN

SHEET NUMBER:

**C-113**

15 OF 35 SHEETS  
03/28/2024

MATCHLINE (RE: SHEET C-111)



MATCHLINE (RE: SHEET C-114)

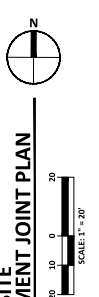
JOINT LEGEND	
-----	WALK CONTROL JOINT (RE: 10/C-501)
-----	PAVEMENT CONTROL JOINT (RE: 11/C-501)

ADD ALTERNATE #1 NOTE:	
ADD ALTERNATE #1	INCLUDES REMOVAL OF EXISTING ASPHALT PAVEMENT, RIP RAP AND TRENCH DRAIN INCLUDED IN BASE BID.

ADD ALTERNATE #1 (SEE NOTE)

BASE BID





816.701.2100

OFFICE OF ADMINISTRATION  
DIVISION OF FACILITIES  
MANAGEMENT,  
DESIGN AND CONSTRUCTION

MISSOURI STATE HIGHWAY  
PATROL

CRIME LAB - EXTERIOR  
RENOVATIONS  
TROOP H HEADQUARTERS  
BUILDING

ST. JOSEPH, MISSOURI

PROJECT # R-2338-01

SITE # 6009

FACILITY # 815609002 &

815609003

REVISION, ADDITION, DELETION  
DATE: 03/28/2024  
REVISION: 03/28/2024  
REVISION: 03/28/2024  
REVISION: 03/28/2024  
DATE: 03/28/2024  
ISSUE DATE: 03/28/2024

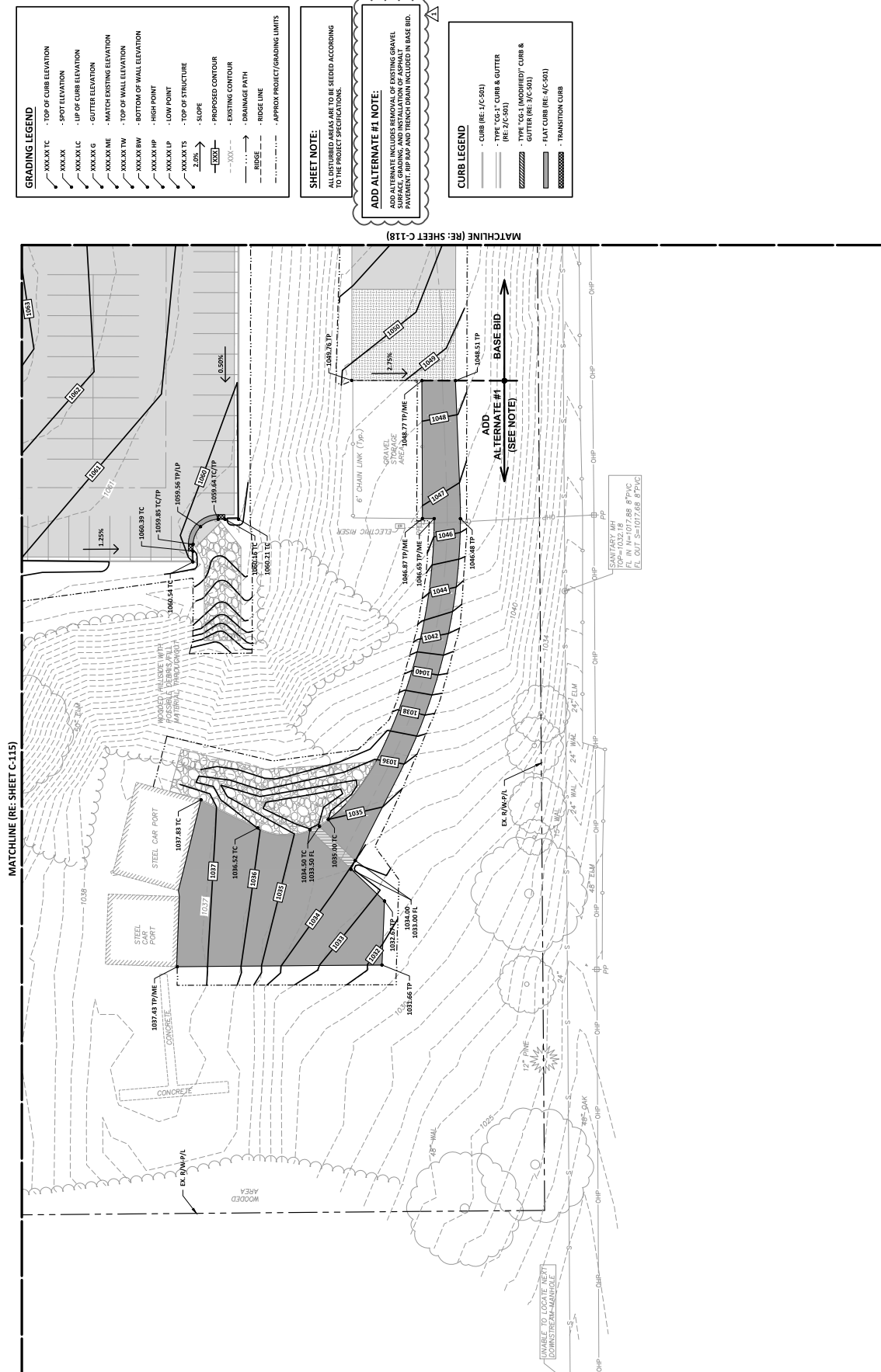
CAD DWG FILE: C-117.dwg  
CREATED BY: YHP  
CHECKED BY: YHP  
DESIGNED BY: YHP

SHEET TITLE:  
CIVIL SITE  
GRADING PLAN

SHEET NUMBER:

C-117

19 OF 35 SHEETS  
03/28/2024



**GRADING LEGEND**

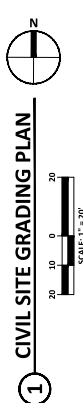
- XXXXX TC - TOP OF CURB ELEVATION
- XXXXX - SPOT ELEVATION
- XXXXX LC - TOP OF CURB ELEVATION
- XXXXX GC - GUTTER ELEVATION
- XXXXX ME - MATCH EXISTING ELEVATION
- XXXXX TW - TOP OF WALL ELEVATION
- XXXXX BW - BOTTOM OF WALL ELEVATION
- XXXXX HP - HIGH POINT
- XXXXX LP - LOW POINT
- XXXXX TS - TOP OF STRUCTURE
- XXXXX CS - PROPOSED CONTOUR
- XXXXX ES - EXISTING CONTOUR
- XXXXX - DRAINAGE PATH
- XXXXX - RIDGE LINE
- XXXXX - APPROX. PROJECT/GRADING LIMITS

**SHEET NOTE:**  
ALL DISTURBED AREAS ARE TO BE SEED ACCORDING TO THE PROJECT SPECIFICATIONS.

**ADD ALTERNATE #1 NOTE:**  
ADD ALTERNATE INCLUDES REMOVAL OF EXISTING GRAVEL PAVEMENT, RIP RAP AND TRENCH DRAIN INCLUDED IN BASE BID.

**CURB LEGEND**

- XXXXXX - CURB (RE: 7/C-501)
- XXXXXX - TYPE 'CG-1' CURB & GUTTER (RE: 7/C-501)
- XXXXXX - TYPE 'CG-1 (MODIFIED)' CURB & GUTTER (RE: 7/C-501)
- XXXXXX - FLAT CURB (RE: 4/C-501)
- XXXXXX - TRANSITION CURB





Walter P. Parson and Associates, Inc.  
1100 Williams, State Street  
Jefferson City, Missouri 64108  
816.701.2100



CUSTOM ENGINEERING  
1070 EAST HARRISONWAY  
JEFFERSON CITY, MISSOURI 64108  
www.customeng.com  
MISSOURI LICENSE # 000029

OFFICE OF ADMINISTRATION  
DIVISION OF FACILITIES  
MANAGEMENT  
DESIGN AND CONSTRUCTION

MISSOURI STATE HIGHWAY  
PATROL

CRIME LAB - EXTERIOR  
RENOVATIONS  
TROOP H. HEADQUARTERS  
BUILDING

ST. JOSEPH, MISSOURI

PROJECT # R-2338-01  
SITE # 6009  
FACILITY # 8136009002 &  
8136009003

REVISION: ADDENDUM I  
REVISION DATE: 08/30/2024  
REVISION: \_\_\_\_\_  
REVISION DATE: \_\_\_\_\_  
ISSUE DATE: \_\_\_\_\_

CAD DWG FILE: \_\_\_\_\_  
DRAWN BY: MJC  
CHECKED BY: CKK  
DESIGNED BY: JAW

SHEET TITLE:  
ELECTRICAL SITE  
PLAN

SHEET NUMBER:

E-200

26 OF 34 SHEETS  
03/28/2024

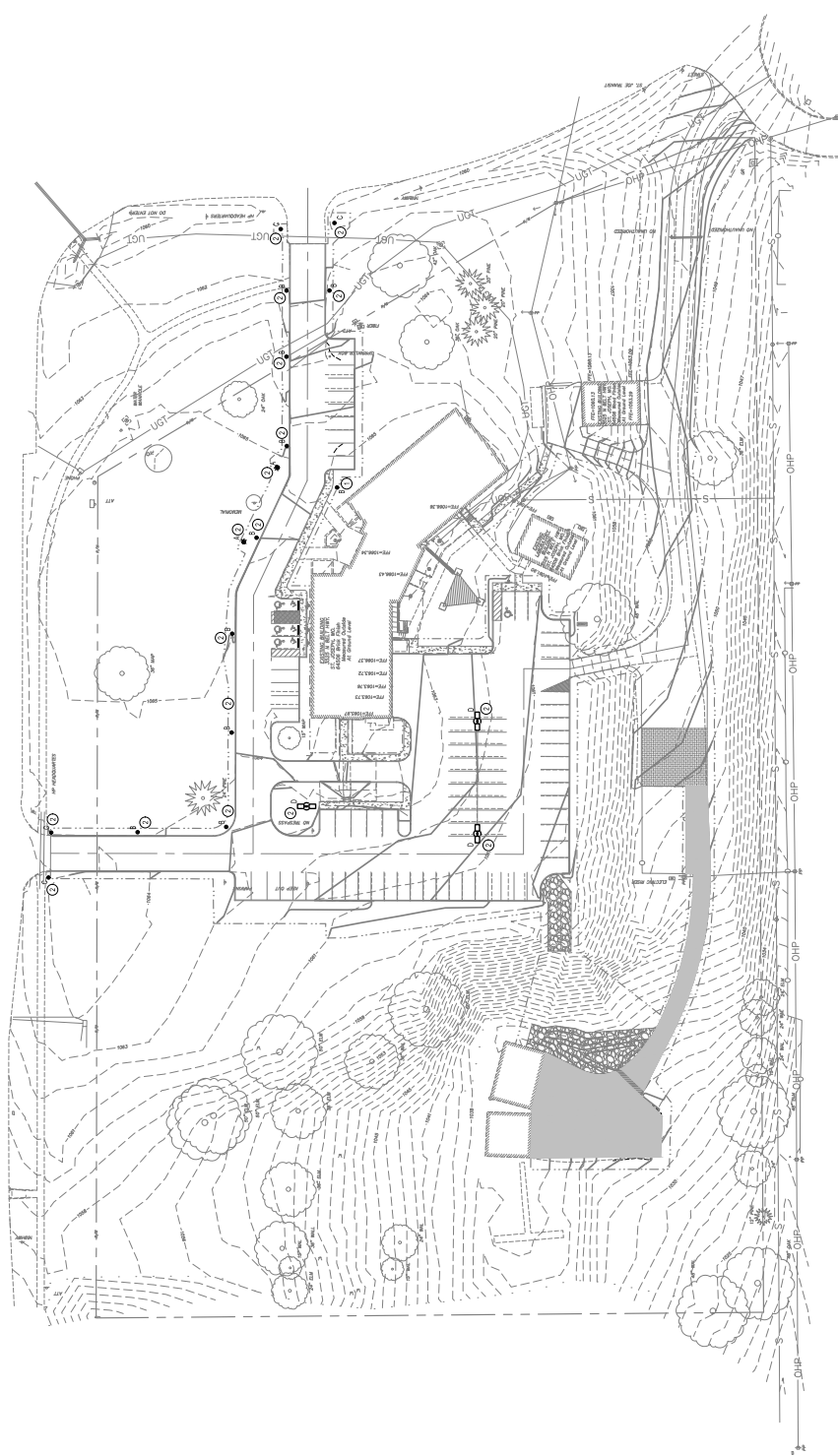
GENERAL NOTES

1. REFER TO ELECTRICAL SYMBOL LEGEND AND SPECIFICATIONS.
2. REFER TO ELECTRICAL SCHEDULE ON THIS SHEET.
3. REFER TO ELECTRICAL SCHEDULE ON THIS SHEET.
4. REFER TO ELECTRICAL SCHEDULE ON THIS SHEET.

KEY NOTES

- NEW LIGHT FIXTURE TYPE IN NEW LOCATION. COORDINATE WITH GENERAL CONTRACTOR FOR EXACT LOCATION OF FIXTURE.
- FUTURE INSTALLATION BASE.
- RECONNECT TO EXISTING CIRCUIT.

SITE LIGHTING SCHEDULE												
MARK	MANUFACTURER	MODEL NO.	TYPE	VOLTS	AMPS	WATTS	LUMENS	CCT (°K)	CR	LAMPS	STATIONING	REMARKS
A	LSI	KFLM-F-LED-30-HD-100-W-100-100-200-100	ARCHITECTURAL FLOOD (AFLM)	120	38	38	3155	4000K	80	LED		
B	LSI	REVOLVO-LED-140-30-W-100-100-200-100	ARCHITECTURAL BOLLARD (ABLR)	120	38	38	1254	4000K	70	LED		
C	WAVE LIGHTING	CRISTO-F-1-LED-30W	ENTRANCE LIGHTING	120	40	40	4000	4000K	90	LED		
D	COOPER LIGHTING SOLUTIONS	GAN-30-30-30-100-100-100-100-100	AREA LIGHTING	208	213	213	27751	4000K	90	LED		ROUND HEAD FIXTURE WITH NEW POLE. 20 FT POLE 3.5 FT BASE.
COR ESAL												



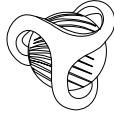
ELECTRICAL SITE PLAN  
SHEET 114





Walter P. Parson and Associates, Inc.  
1100 Walnut, Suite 1322  
Jennett, MO, Missouri 64506

816.701.2100



CUSTOM ENGINEERING  
1070 EAST HIGHWAY 40  
ST. JOSEPH, MISSOURI 64501  
www.cpe-engineering.com  
MISSOURI LICENSE NO. 000024

OFFICE OF ADMINISTRATION  
DIVISION OF FACILITIES  
MANAGEMENT  
DESIGN AND CONSTRUCTION

MISSOURI STATE HIGHWAY  
PATROL

CRIME LAB - EXTERIOR  
RENOVATIONS  
TROOP HEADQUARTERS  
BUILDING

ST. JOSEPH, MISSOURI

PROJECT # R-2338-01  
SITE # 6009  
FACILITY # 8136009002 &  
8136009003

REVISION: ADDENDUM #1  
REVISION: \_\_\_\_\_  
DATE: 08/30/2024  
REVISION: \_\_\_\_\_  
DATE: \_\_\_\_\_  
ISSUE DATE: \_\_\_\_\_

CAD DWG FILE:  
DRAWN BY: AJCC  
CHECKED BY: NKP  
DESIGNED BY: JAW

SHEET TITLE:  
**SUPPLEMENTAL  
POLE DETAILS**

SHEET NUMBER:

**E-301**

27 OF 34 SHEETS  
03/28/2024

**POLE SPECIFICATIONS**

CATALOG NO.: P200-APR-G-M00-AB (OR APPROVED EQUAL)

QUANTITY: CW 14025401

SECTION: TAPERED ROUND

COLOR: BZ

FINISH: MOLD

POLE TOP: 4.34"

POLE BUTT: 8.35"

POLE LENGTH: 20' 0"

RACEWAY: MIN 1 1/8" TO TOP OF POLE

APPROX WEIGHT: 710 LBS.

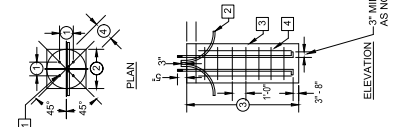
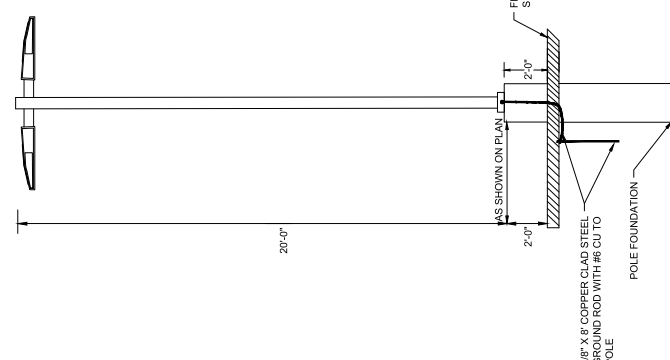
**DIMENSIONS**

NO.	ITEM	DIMENSIONS
1	BOLT SPACING	USE MANUFACTURE TEMPLATE
2	DIAMETER OF FOUNDATION	24"
3	DEPTH OF FOUNDATION	6'-0"
4	BOLT CIRCLE DIAMETER	USE MANUFACTURE TEMPLATE

NOTE: REFER TO THE SHOP DRAWINGS FOR BOLT SPACING. CONCRETE SHALL BE PER APVA REQUIREMENTS.

**PARKING LOT LIGHT POLE FOUNDATIONS NOTES:**

- 1" DIAMETER ANCHOR BOLTS EXTENDED WITH #6 REBAR AS REQUIRED
- EXTEND TO EXISTING CONDUIT. REPLACE CONDUCTORS BETWEEN POLES. PLUG ALL CONDUIT OPENINGS WITH DUXSEAL OR EQUIVALENT BEFORE PLACING CONCRETE & AFTER CABLE INSTALLATION. SEE PLANS FOR NUMBER & DIRECTION OF BENDS.
- FURNISH AND INSTALL CONCRETE PER APVA REQUIREMENTS (MINIMUM OF 3000 PSI).
- FURNISH AND INSTALL (7) #6 REBAR WITH 1" SPACING BETWEEN REBAR.



**1 TYPED POLE DETAIL**

**2 TYPED POLE FOUNDATION DETAIL**