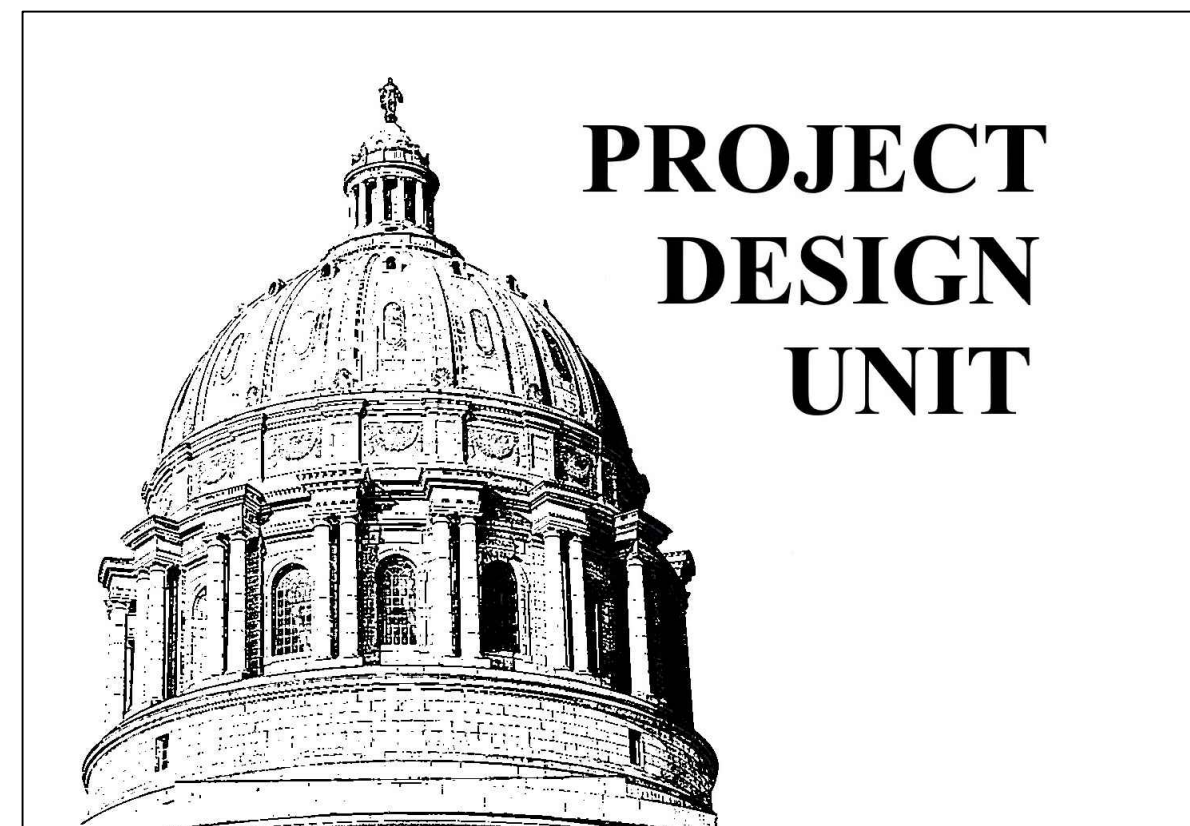


# REPLACE WINDOWS AND BLINDS TROOP B HEADQUARTERS & CRIME LAB MACON, MISSOURI

OWNER: STATE OF MISSOURI  
MIKE KEHOE, GOVERNOR

DEPARTMENT OF PUBLIC SAFETY  
MISSOURI STATE HIGHWAY PATROL

PROJECT MANAGEMENT: OFFICE OF ADMINISTRATION  
DIVISION OF FACILITIES MANAGEMENT,  
DESIGN AND CONSTRUCTION

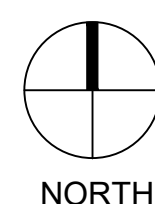


DESIGNER: OA-FMDC PROJECT DESIGN UNIT  
HARRY S TRUMAN STATE OFFICE BUILDING  
301 WEST HIGH STREET, ROOM 780  
JEFFERSON CITY, MO  
65101

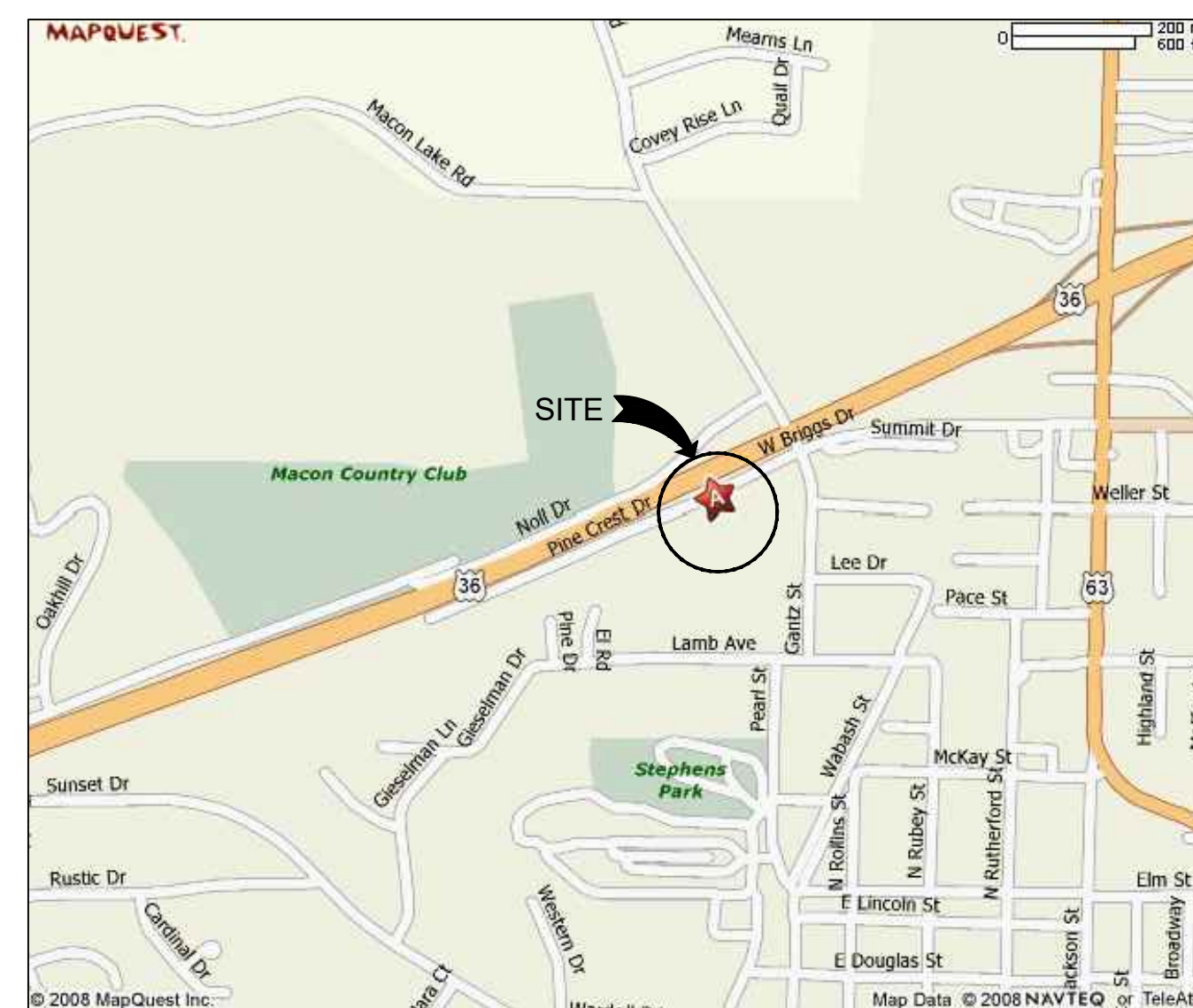
SITE NUMBER: 6003  
ASSET NUMBERS: 8136003004 & 8136003005  
PROJECT NUMBER: R2509-01



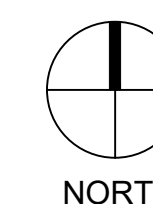
VICINITY MAP



NORTH



LOCATION MAP



NORTH



SITE AERIAL

## DRAWING INDEX

G-001	COVER SHEET
A-100	FLOOR PLANS
A-200	ELEVATIONS
A-500	DETAILS

SHEET NUMBER:  
**G-001**  
1 OF 4 SHEETS  
10/15/2025



Brad M. Schaefer - Architect  
MO# A-2009027294

**CONSTRUCTION  
DOCUMENTS**

OFFICE OF ADMINISTRATION  
DIVISION OF FACILITIES  
MANAGEMENT,  
DESIGN AND CONSTRUCTION

DEPARTMENT OF  
PUBLIC SAFETY  
MISSOURI STATE  
HIGHWAY PATROL

REPLACE WINDOWS  
AND BLINDS

TROOP B HEADQUARTERS  
BUILDING & CRIME LAB  
308 PINE CREST DRIVE  
MACON, MISSOURI 63552

PROJECT # R2509-01  
SITE # 6003  
ASSET # 8136003004  
8136003005

REVISION:  
DATE:  
REVISION:  
DATE:  
REVISION:  
DATE:

ISSUE DATE:

CAD DWG FILE:  
DRAWN BY: MLB  
CHECKED BY: BMS  
DESIGNED BY: MLB

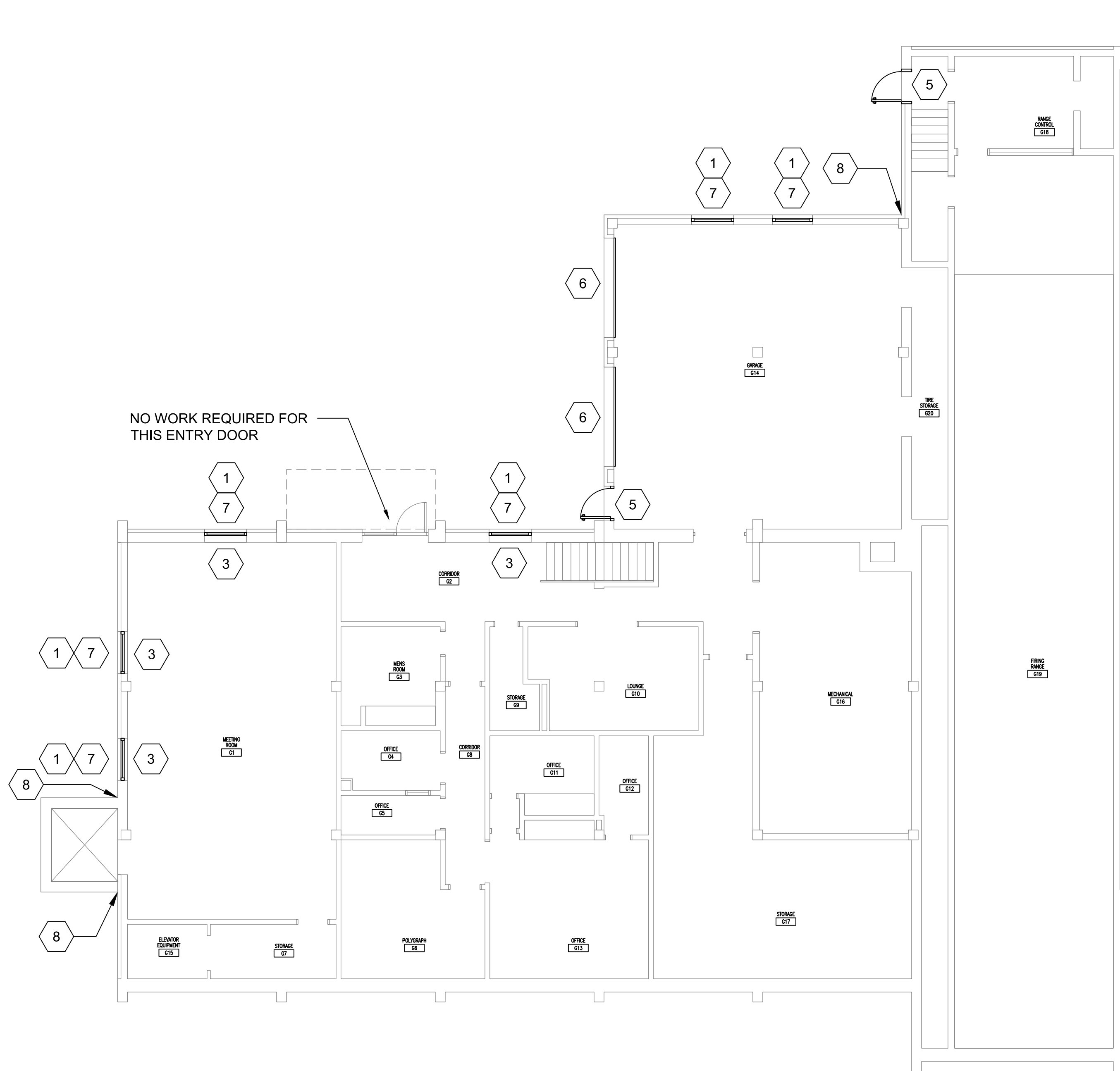
SHEET TITLE:  
**FLOOR PLANS**

SHEET NUMBER:

**A-100**

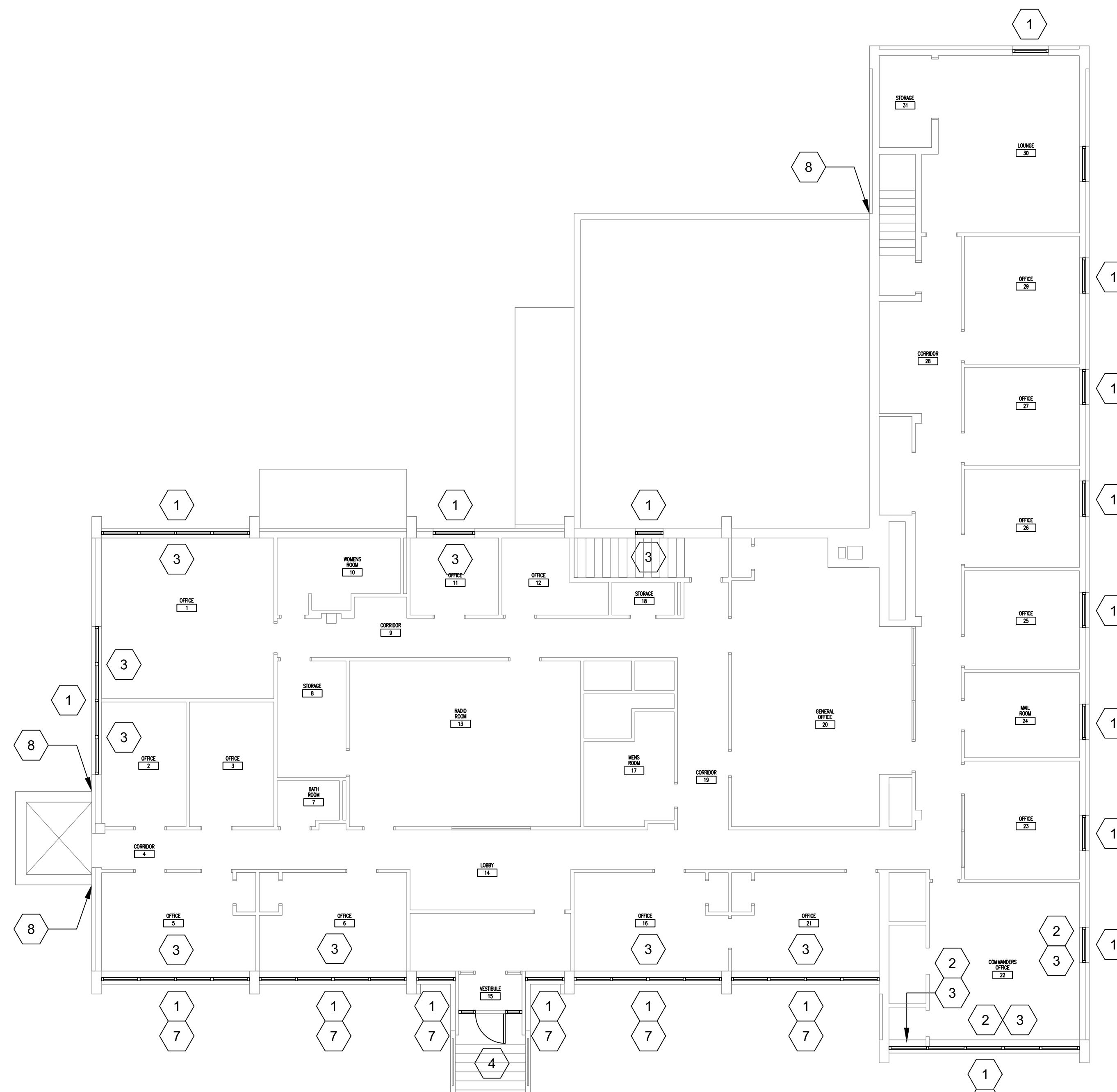
2 OF 4 SHEETS

10/15/2025

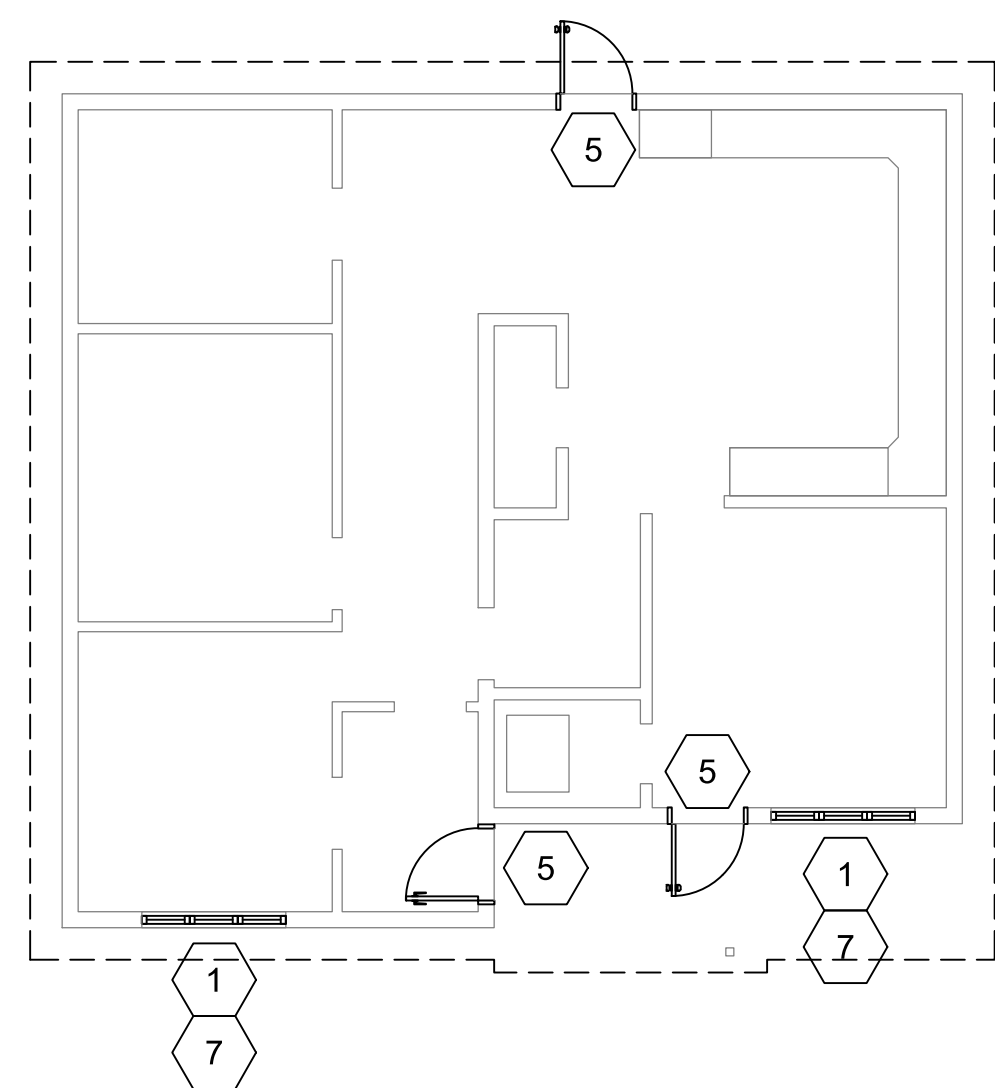


NO WORK REQUIRED FOR THIS ENTRY DOOR

**1 LOWER LEVEL FLOOR PLAN**  
1/8"=1'-0"  
NORTH



**2 MAIN LEVEL FLOOR PLAN**  
1/8"=1'-0"  
NORTH



**3 CRIME LAB FLOOR PLAN**  
1/8"=1'-0"  
NORTH

**KEY NOTES**

- 1 REMOVE AND DISPOSE OF EXISTING WINDOW, INCLUDING SEALANT, FRAME, AND GLAZING. INSTALL NEW WINDOW, INCLUDING FRAME, GLAZING AND SEALANT.
- 2 REMOVE AND DISPOSE OF MARBLE SILL. INSTALL NEW 5/8" THICK SOLID SURFACE SILL.
- 3 REMOVE AND DISPOSE OF EXISTING WINDOW BLINDS. INSTALL NEW WINDOW BLINDS.
- 4 REMOVE AND DISPOSE OF EXISTING ALUMINUM STOREFRONT, INCLUDING SEALANT, FRAMES, DOORS, HARDWARE, THRESHOLD, AND GLAZING. DISCONNECT ANY ELECTRICAL CONNECTIONS FOR ELECTRONIC HARDWARE. INSTALL NEW ALUMINUM STOREFRONT, INCLUDING SEALANT, FRAMES, DOORS HARDWARE, THRESHOLD AND GLAZING. RECONNECT ANY ELECTRICAL CONNECTIONS FOR ELECTRONIC HARDWARE.
- 5 REMOVE AND DISPOSE OF EXISTING HOLLOW METAL DOOR AND FRAME, INCLUDING SEALANT, HARDWARE, AND THRESHOLD. DISCONNECT ANY ELECTRICAL CONNECTIONS FOR ELECTRONIC HARDWARE. INSTALL NEW HOLLOW METAL DOOR AND FRAME, INCLUDING SEALANT, HARDWARE, AND THRESHOLD. RECONNECT ANY ELECTRICAL CONNECTIONS FOR ELECTRONIC HARDWARE. PAINT INTERIOR AND EXTERIOR SURFACES OF NEW DOOR AND FRAME.
- 6 REMOVE AND DISPOSE OF EXISTING SECTIONAL OVERHEAD DOOR, INCLUDING TRACK, WEATHERSTRIPPING, AND DOOR OPERATOR. DISCONNECT ELECTRICAL CONNECTION FOR DOOR OPERATOR. INSTALL NEW INSULATED SECTIONAL OVERHEAD DOOR, INCLUDING TRACK, WEATHERSTRIPPING, AND DOOR OPERATOR. RECONNECT ELECTRICAL FOR DOOR OPERATOR.
- 7 ALTERNATE NUMBER 1: INSTALL SECURITY GLAZING FILM ON GLASS OF THIS WINDOW. SEE SPECIFICATION SECTION 012300 FOR ALTERNATES AND SPECIFICATION SECTION 088853 FOR SECURITY GLAZING FILM. SECURITY GLAZING FILM TO BE INSTALLED ON VISION GLASS ONLY, NOT ON SPANDREL GLASS.
- 8 REMOVE PCB CONTAINING SEALANT FROM EXPANSION JOINTS. INSTALL NEW BACKING MATERIAL AND RESEAL EXPANSION JOINTS. SEE SPECIFICATION SECTION 028213 FOR PCB ABATEMENT REQUIREMENTS.

**GENERAL NOTES**

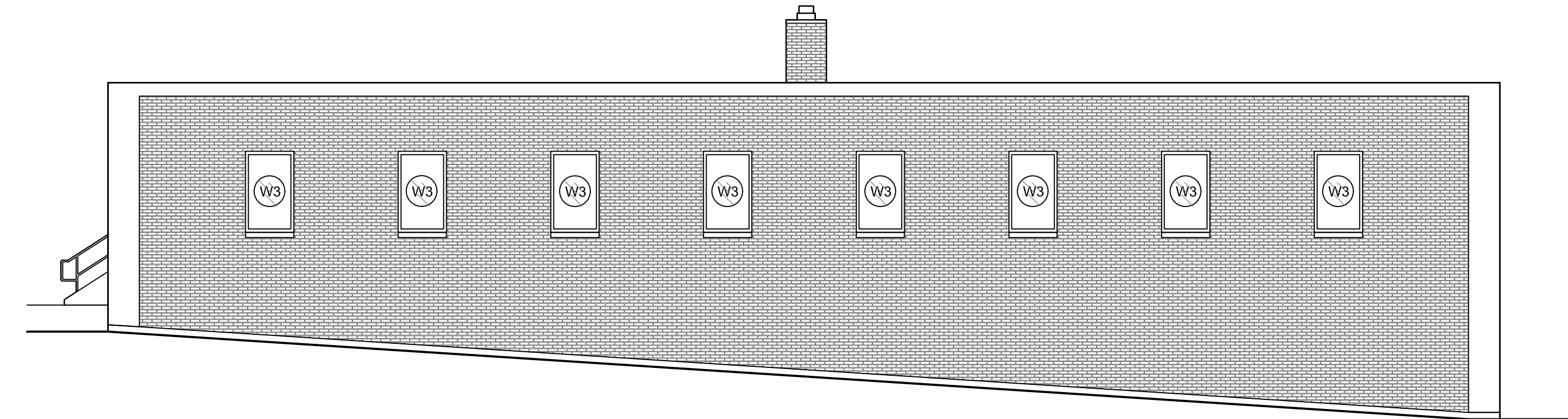
1. THE CONTRACTOR SHALL COORDINATE ALL ACTIVITIES WITH OWNER'S DESIGNATED REPRESENTATIVE.
2. THE CONTRACTOR SHALL NOT IMPEDE THE OPERATION OF THE FACILITY IN ANY MANNER WHILE CONSTRUCTION IS UNDERWAY.
3. THE CONTRACTOR SHALL FIELD VERIFY ALL EXISTING DIMENSIONS.
4. THE CONTRACTOR SHALL VERIFY THE SIZE AND THICKNESS OF ALL NEW MATERIALS TO BE USED.
5. THE CONTRACTOR SHALL FIELD VERIFY ALL EXISTING CONDITIONS TO ENSURE PROPER COMPLETION OF THE NEW WORK.
6. THE CONTRACTOR SHALL REMOVE ALL OFFICE FURNITURE AND EQUIPMENT WITHIN THE AREA OF WORK. TEMPORARY STORAGE OF FURNITURE AND EQUIPMENT SHALL BE COORDINATED WITH THE OWNER'S DESIGNATED REPRESENTATIVE. THE CONTRACTOR SHALL MOVE FURNITURE AND EQUIPMENT BACK TO ORIGINAL LOCATION AFTER WORK IS COMPLETE IN THAT AREA.
7. THE CONTRACTOR SHALL PROTECT ALL EXISTING FURNITURE AND EQUIPMENT FROM DUST, DIRT, OR DAMAGE DURING ALL CONSTRUCTION ACTIVITIES.
8. PROTECT EXISTING DRYWALL SURFACES. PATCH ANY DRYWALL SURFACES DAMAGED AS A RESULT OF WINDOW REPLACEMENT WORK. PAINT TO MATCH SURROUNDING SURFACES. ANY PAINTING REQUIRED SHALL BE FROM EDGE-TO-EDGE OR CORNER-TO-CORNER.
9. PROTECT EXISTING SUSPENDED CEILING DURING REPLACEMENT WORK. REMOVE EXISTING CEILING AND SUSPENSION GRID AS REQUIRED TO CONDUCT REPLACEMENT WORK. REINSTALL CEILING AND SUSPENSION GRID WHEN REPLACEMENT WORK IS COMPLETE. REPLACE ANY CEILING TILE OR SUSPENSION GRID DAMAGED AS A RESULT OF WINDOW REPLACEMENT WORK.
10. PROTECT MASONRY SURFACES DURING REPLACEMENT WORK. THOROUGHLY REMOVE ANY SEALANT RESIDUE BEFORE APPLYING NEW SEALANT. CLEAN ANY MASONRY SURFACES SOILED BY WINDOW REPLACEMENT WORK. PATCH ANY MASONRY DAMAGED AS A RESULT OF WINDOW REPLACEMENT WORK. PATCH TO MATCH SURROUNDING MASONRY.
11. PROTECT HVAC UNITS UNDER THE WINDOWS. REPAIR ANY UNITS DAMAGED AS A RESULT OF WINDOW REPLACEMENT WORK.
12. PROTECT EXISTING WOOD PANELING WHERE IT OCCURS. REPAIR OR REPLACE ANY WOOD PANELING DAMAGED AS A RESULT OF WINDOW REPLACEMENT WORK.
13. THE CONTRACTOR SHALL PROTECT ALL EXISTING BUILDING SURFACES FROM DUST, DIRT, OR DAMAGE DURING ALL CONSTRUCTION ACTIVITIES.
14. THE CONTRACTOR SHALL REMOVE AND DISPOSE OF ALL EXISTING MATERIALS SHOWN TO BE REMOVED.
15. DO NOT REMOVE ANY MORE DOORS OR WINDOWS THAN CAN BE REPLACED IN THE SAME DAY.
16. THE CONTRACTOR SHALL ENSURE THAT THE BUILDING IS SECURE AND WEATHER TIGHT AT THE END OF EACH WORKDAY.
17. PROVIDE ALL MATERIALS AND ACCESSORIES NECESSARY FOR A COMPLETE INSTALLATION.
18. INSTALLATION OF ALL NEW MATERIALS SHALL BE IN STRICT ACCORDANCE WITH MANUFACTURER'S INSTRUCTIONS.
19. THE CONTRACTOR SHALL STORE MATERIALS ONLY IN APPROVED AREAS ON THE SITE.
20. REPAIR ANY DAMAGE MADE TO BUILDINGS AND GROUNDS BY CONSTRUCTION ACTIVITIES.
21. THE CONTRACTOR SHALL REPAIR ANY LAWN AREAS DISTURBED BY CONSTRUCTION.
22. THE CONTRACTOR SHALL THOROUGHLY CLEAN ALL AFFECTED AREAS AFTER ALL WORK IS COMPLETED. PICK UP AND PROPERLY DISPOSE OF ALL FASTENERS, DEBRIS, AND EXTRA MATERIAL NOT MEANT TO BE LEFT WITH THE OWNER.
23. THE CONTRACTOR SHALL THOROUGHLY CLEAN THE WINDOWS, INSIDE AND OUT, AT THE END OF THE PROJECT.

**CAUTION**

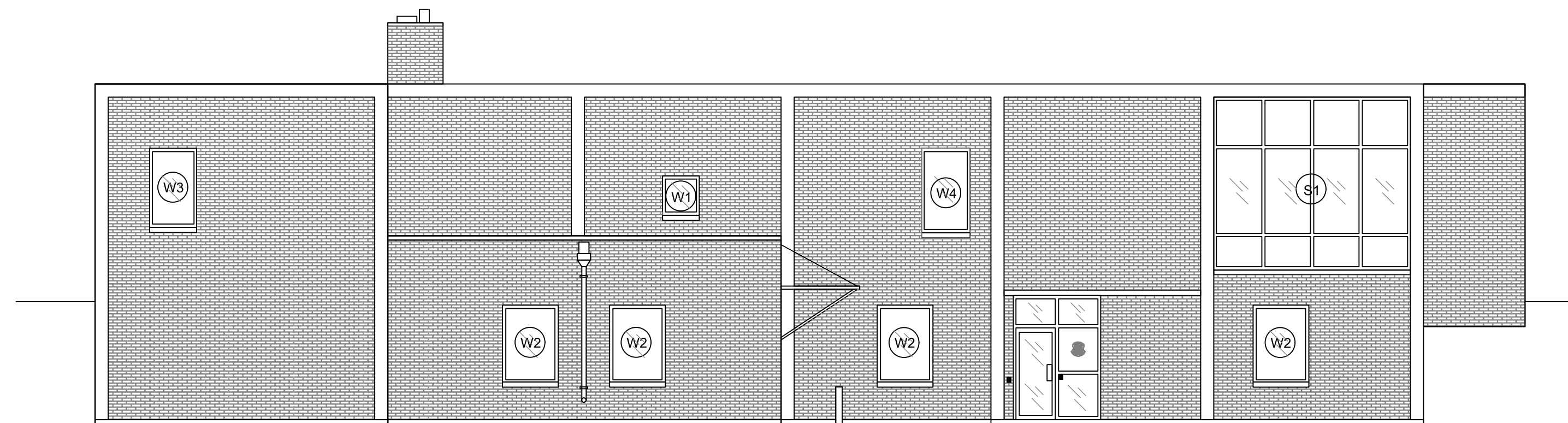
1. POLYCHLORINATE BIPHENYL (PCB) CONTAINING MATERIAL HAS BEEN FOUND IN EXTERIOR EXPANSION JOINTS.
2. SEE APPENDIX A, ENVIRONMENTAL INSPECTION REPORT, FOR DETAILS.
3. SEE APPENDIX B, PCB LOCATION DRAWING FOR LOCATION OF PCB CONTAINING MATERIALS.
4. SEE SPECIFICATION SECTION 028213 FOR PCB ABATEMENT REQUIREMENTS.



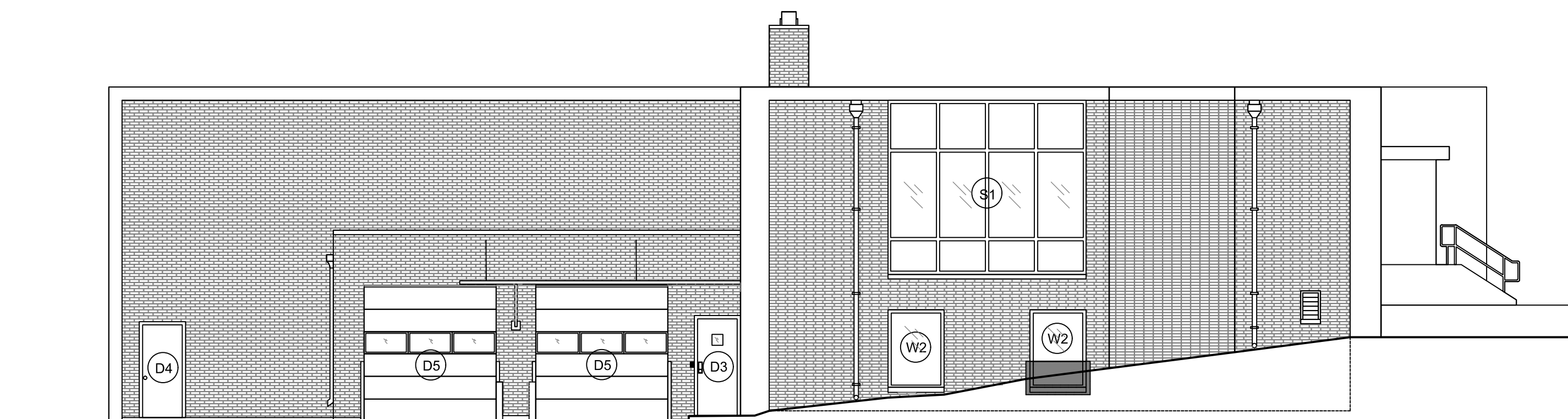
HEADQUARTERS  
**1 NORTH ELEVATION**  
 1/8"=1'-0"



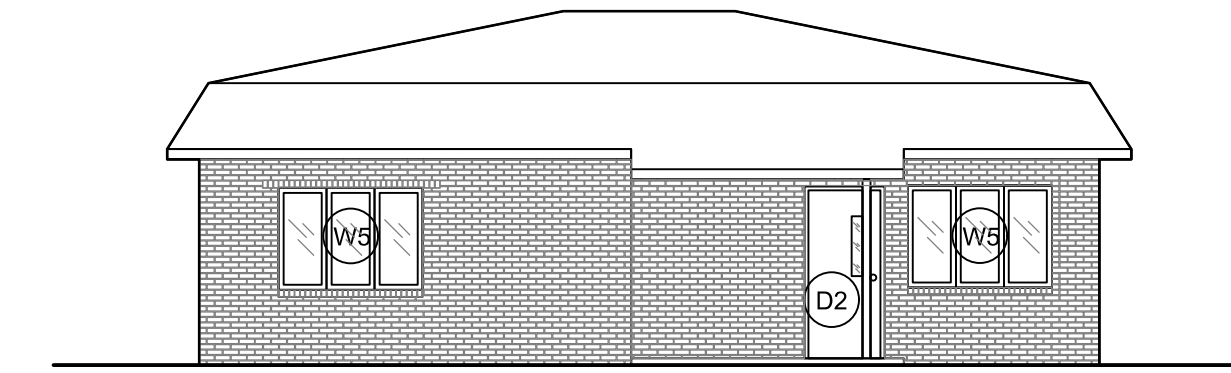
HEADQUARTERS  
**2 WEST ELEVATION**  
 1/8"=1'-0"



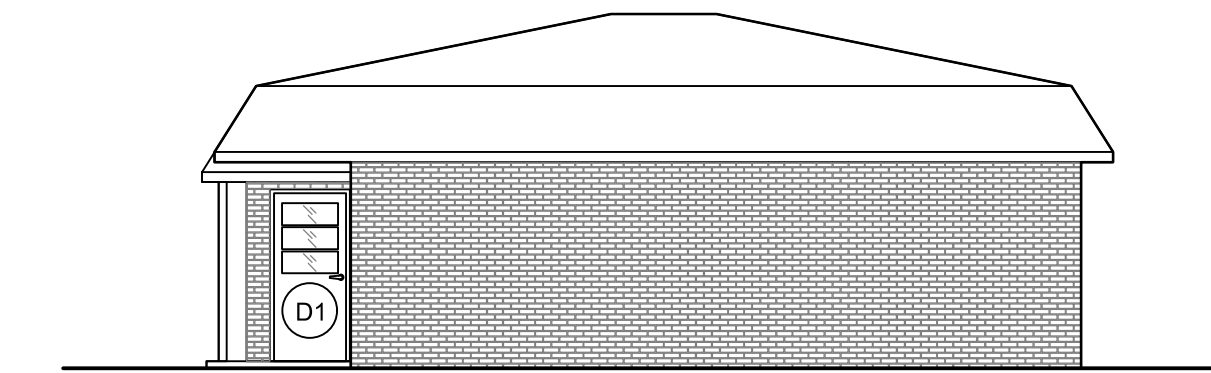
HEADQUARTERS  
**3 SOUTH ELEVATION**  
 1/8"=1'-0"



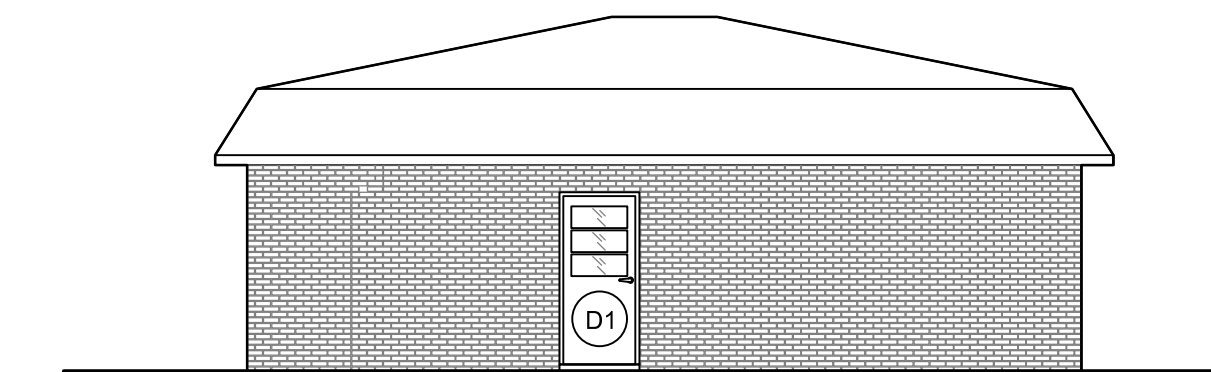
HEADQUARTERS  
**4 EAST ELEVATION**  
 1/8"=1'-0"



CRIME LAB  
**5 NORTH ELEVATION**  
 1/8"=1'-0"



CRIME LAB  
**6 WEST ELEVATION**  
 1/8"=1'-0"



CRIME LAB  
**7 SOUTH ELEVATION**  
 1/8"=1'-0"

**CAUTION**

1. POLYCHLORINATE BIPHENYL (PCB) CONTAINING MATERIAL HAS BEEN FOUND IN EXTERIOR EXPANSION JOINTS.
2. SEE APPENDIX A, ENVIRONMENTAL INSPECTION REPORT, FOR DETAILS.
3. SEE SPECIFICATION SECTION 028400 FOR ABATEMENT REQUIREMENTS.



Brad M. Schaefer - Architect  
 MO# A-2009027294

**CONSTRUCTION DOCUMENTS**

OFFICE OF ADMINISTRATION  
 DIVISION OF FACILITIES  
 MANAGEMENT,  
 DESIGN AND CONSTRUCTION

DEPARTMENT OF  
 PUBLIC SAFETY  
 MISSOURI STATE  
 HIGHWAY PATROL

REPLACE WINDOWS  
 AND BLINDS

TROOP B HEADQUARTERS  
 BUILDING & CRIME LAB  
 308 PINE CREST DRIVE  
 MACON, MISSOURI 63552

PROJECT # R2509-01  
 SITE # 6003  
 ASSET # 8136003004  
 8136003005

REVISION: \_\_\_\_\_  
 DATE: \_\_\_\_\_  
 REVISION: \_\_\_\_\_  
 DATE: \_\_\_\_\_  
 REVISION: \_\_\_\_\_  
 DATE: \_\_\_\_\_

ISSUE DATE: \_\_\_\_\_

CAD DWG FILE: \_\_\_\_\_  
 DRAWN BY: MLB  
 CHECKED BY: BMS  
 DESIGNED BY: MLB

SHEET TITLE:  
**ELEVATIONS**

SHEET NUMBER:

**A-200**

3 OF 4 SHEETS

10/15/2025



Brad M. Schaefer - Architect  
MO# A-2009027294

CONSTRUCTION  
DOCUMENTS

OFFICE OF ADMINISTRATION  
DIVISION OF FACILITIES  
MANAGEMENT,  
DESIGN AND CONSTRUCTION

DEPARTMENT OF  
PUBLIC SAFETY  
MISSOURI STATE  
HIGHWAY PATROL

REPLACE WINDOWS  
AND BLINDS

TROOP B HEADQUARTERS  
BUILDING & CRIME LAB  
308 PINE CREST DRIVE  
MACON, MISSOURI 63552

PROJECT # R2509-01  
SITE # 6003  
ASSET # 8136003004  
8136003005

REVISION: \_\_\_\_\_  
DATE: \_\_\_\_\_  
REVISION: \_\_\_\_\_  
DATE: \_\_\_\_\_  
REVISION: \_\_\_\_\_  
DATE: \_\_\_\_\_  
ISSUE DATE: \_\_\_\_\_

CAD DWG FILE: \_\_\_\_\_  
DRAWN BY: MLB  
CHECKED BY: BMS  
DESIGNED BY: MLB

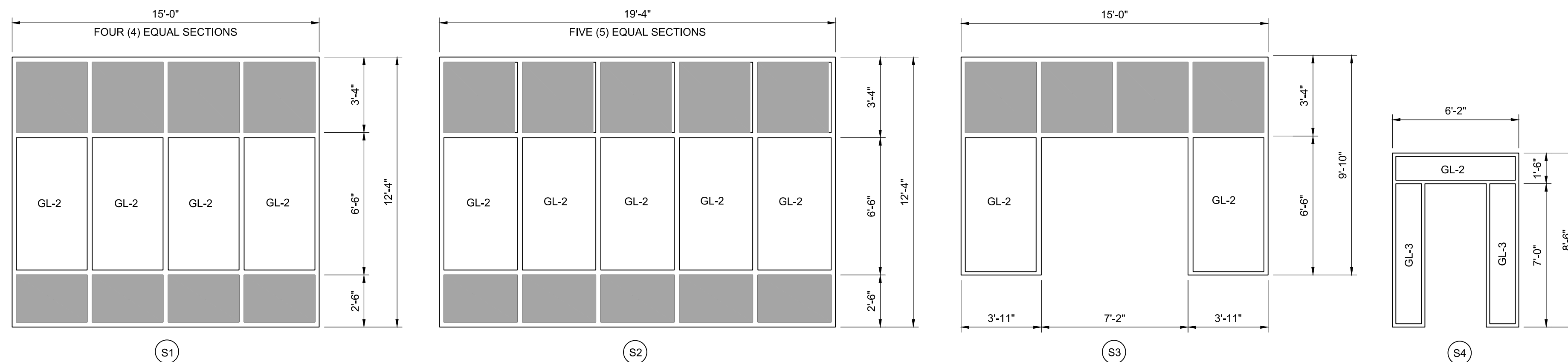
SHEET TITLE:  
DETAILS

SHEET NUMBER:

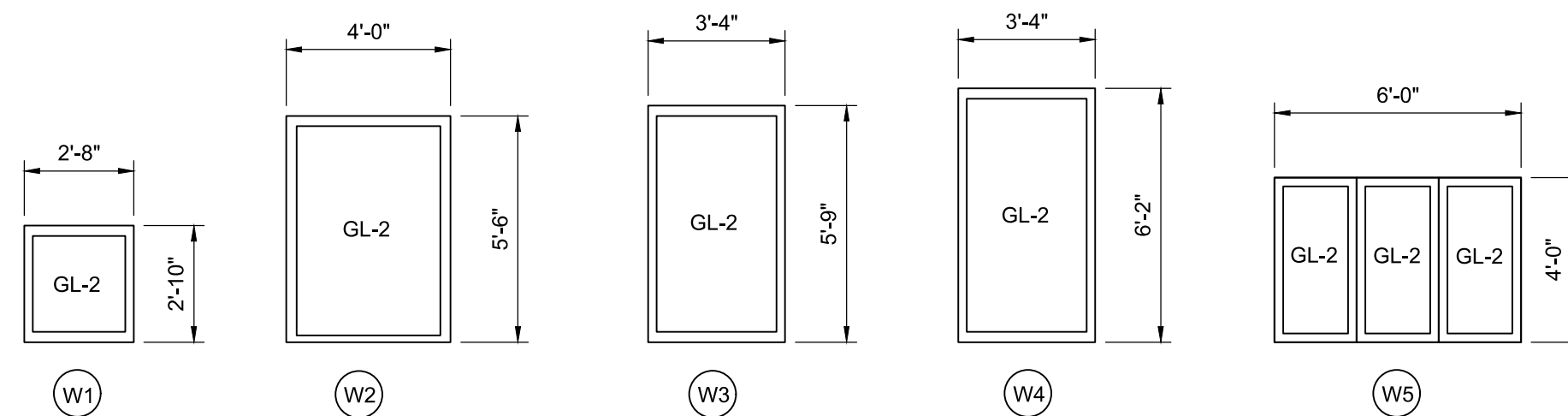
**A-500**

4 OF 4 SHEETS

10/15/2025



**1 STOREFRONT TYPES**  
1/4"=1'-0"

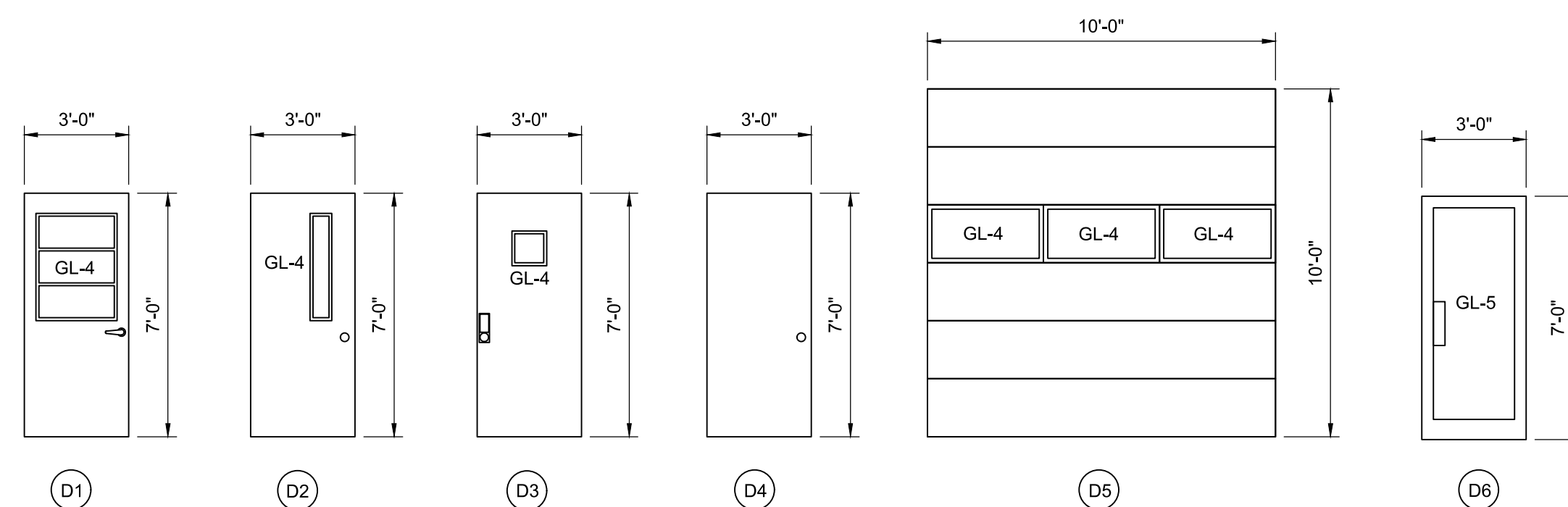


**2 WINDOW TYPES**  
1/4"=1'-0"

WINDOW SCHEDULE							
MARK	SIZE (WxH)	FRAME MATERIAL	FRAME TYPE	GLAZING	HEAD	JAMB	SILL
W1	9'-0" x 7'-6"	ALUMINUM	FIXED	GL-1	6/A-500	SIMILAR TO 6/A-500	6/A-500
W2	12'-0" x 7'-6"	ALUMINUM	FIXED	GL-1	6/A-500	SIMILAR TO 6/A-500	6/A-500
W3	6'-0" x 4'-0"	ALUMINUM	FIXED	GL-1	6/A-500	SIMILAR TO 6/A-500	6/A-500
W4	7'-0" x 2'-6"	ALUMINUM	FIXED	GL-1	6/A-500	SIMILAR TO 6/A-500	6/A-500
W4	7'-0" x 2'-6"	ALUMINUM	FIXED	GL-1	VERIFY	VERIFY	VERIFY

WINDOW GLAZING	
TYPE	DESCRIPTION
GL-1	1" INSULATED SPANDREL GLASS, BLUE TINTED, LOW-E
GL-2	1" INSULATED GLASS, BLUE TINTED, LOW-E
GL-3	1" INSULATED GLASS, TEMPERED, BLUE TINTED, LOW-E

NOTE: VERIFY WINDOW DIMENSIONS FOR EACH OPENING.

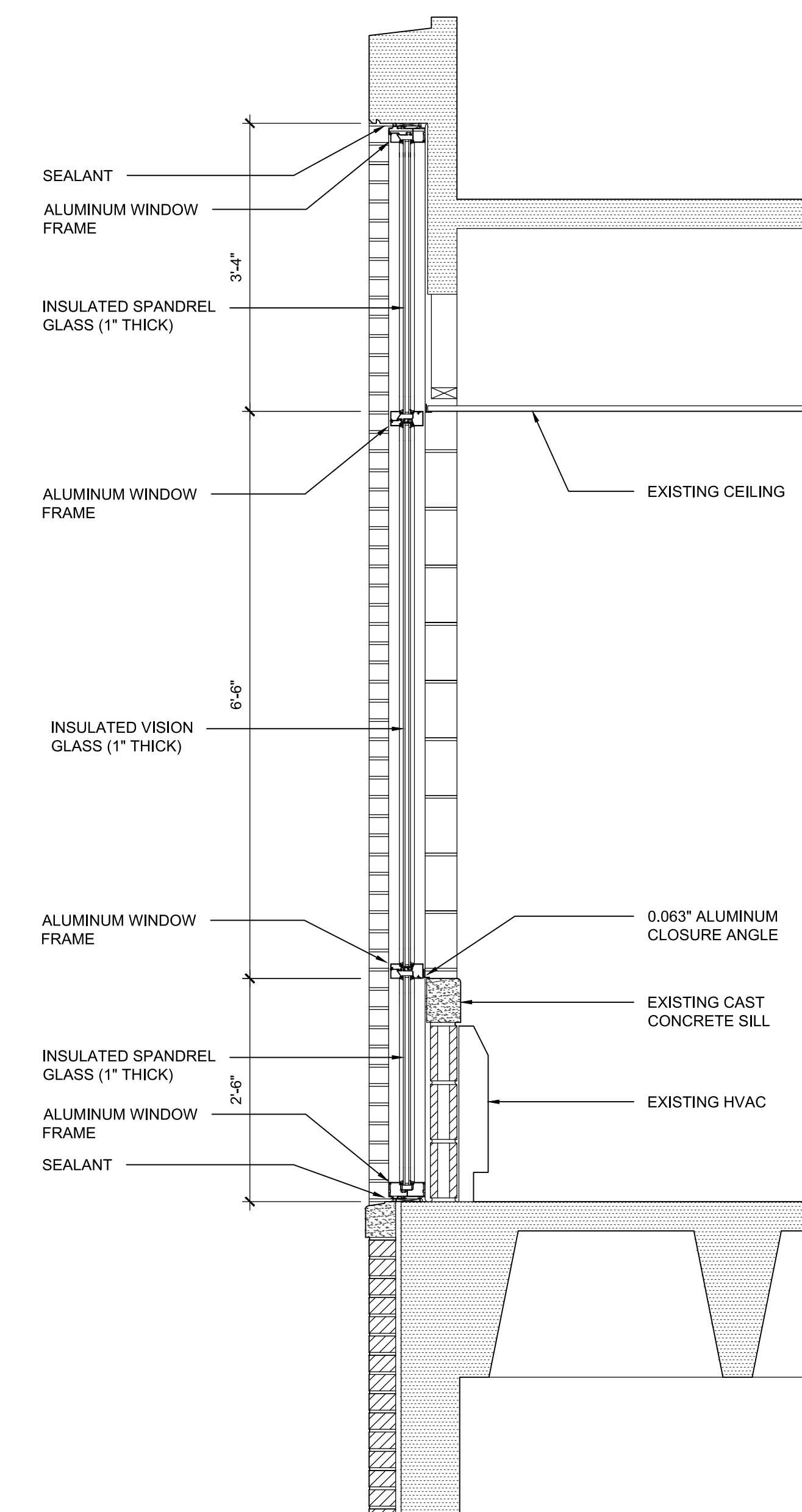


**3 DOOR TYPES**  
1/4"=1'-0"

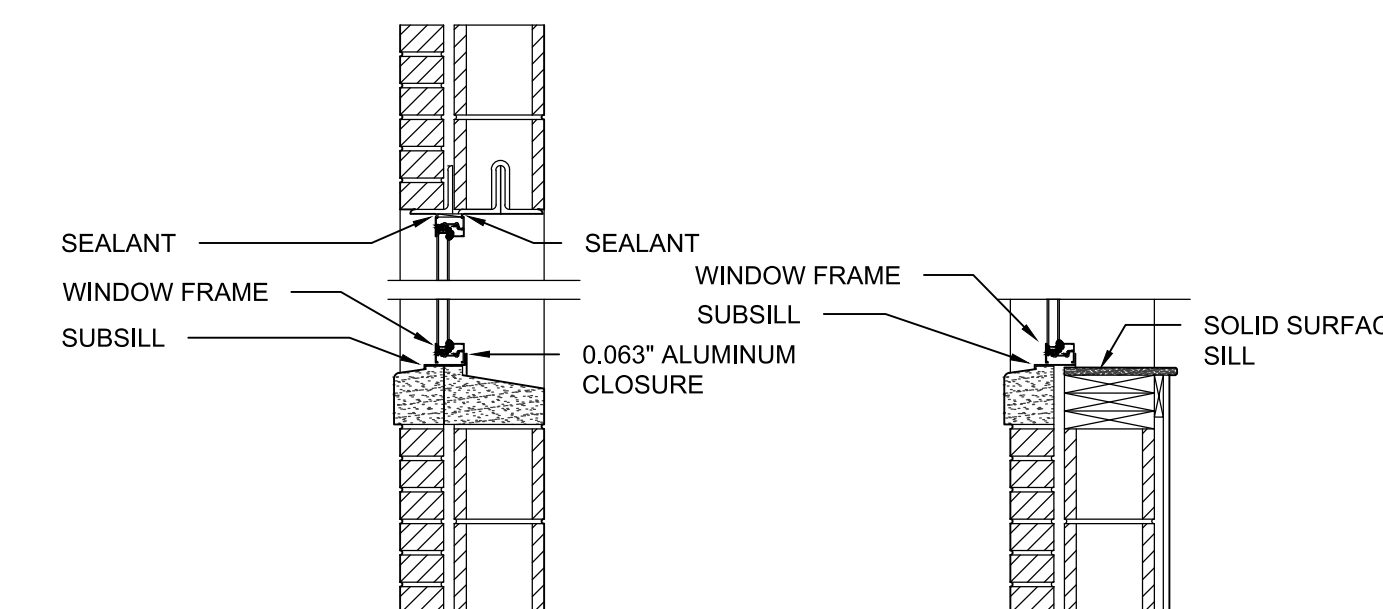
DOOR SCHEDULE							
MARK	SIZE (WxH)	FRAME MATERIAL	FRAME TYPE	GLAZING	HEAD	JAMB	SILL
D1	3'-0" x 7'-0"	HOLLOW METAL	HOLLOW METAL	GL-4	VERIFY	VERIFY	VERIFY
D2	3'-0" x 7'-0"	HOLLOW METAL	HOLLOW METAL	GL-4	VERIFY	VERIFY	VERIFY
D3	3'-0" x 7'-0"	HOLLOW METAL	HOLLOW METAL	GL-4	VERIFY	VERIFY	VERIFY
D4	3'-0" x 7'-0"	HOLLOW METAL	HOLLOW METAL	GL-4	VERIFY	VERIFY	VERIFY
D5	10'-0" x 10'-0"	EXISTING STEEL	NA	GL-4	VERIFY	VERIFY	VERIFY
D6	3'-0" x 7'-0"	ALUMINUM	ALUMINUM	GL-5	VERIFY	VERIFY	VERIFY

DOOR GLAZING	
TYPE	DESCRIPTION
GL-4	1" INSULATED GLASS, TEMPERED, CLEAR, LOW-E
GL-5	1" INSULATED GLASS, TEMPERED, BLUE TINTED, LOW-E

NOTES:  
VERIFY DOOR AND FRAME DIMENSIONS FOR EACH OPENING.  
PROVIDE NEW HARDWARE TO MATCH EXISTING HARDWARE FOR EACH DOOR TO BE REPLACED.



**5 TYPICAL WINDOW-WALL SECTION**  
3/4"=1'-0"



**6 TYPICAL WINDOW SECTION**  
3/4"=1'-0"

ORIGINAL BUILDING  
ADDITION