

ADDENDUM NO. 2

TO: PLANS AND SPECIFICATIONS FOR STATE OF MISSOURI

Replace Windows and Blinds
Troop B Headquarters and Crime Lab
Macon, Missouri
PROJECT NO. R2509-01

Bid Date is: 1:30 PM, **Tuesday, May 19, 2026 (CHANGED)**

Bidders are hereby informed that the Construction Plans and/or Specifications are modified as follows:

BID FORM CHANGES:

1. None

SPECIFICATION CHANGES:

1. Section 084313, Part 2, Section 2.01(A) - Add: 4. Manko Window Systems.
2. Section 087100, Part 2 – Add: Item 2.14 Door Hardware Schedule.

DRAWING CHANGES:

1. Sheet A-100, Revised May 7, 2026.
2. Sheet A-500, Revised May 7, 2026.

GENERAL COMMENTS:

1. The Pre-Bid Meeting was held April 30, 2026, followed by a walk-through of the site. The Pre-Bid Meeting sign-in sheet is attached.
2. Bidders needing additional site inspection should contact **Brad Fouch** at **660.216.1974** to schedule a date and time.
3. Please contact Mandy Roberson, Contract Specialist, at 573-690-9411 or mandy.roberson@oa.mo.gov, for questions about bidding procedures and MBE/WBE/SDVE goals and submittal requirements.
4. The deadline for technical questions by **Noon on Wednesday, May 6, 2026**.
5. Changes to, or clarification of, the bid documents are only made as issued in the addenda.
6. All correspondence with respect to this project must include the State of Missouri project number as indicated above.
7. Current Planholders list available online at: [R2509-01 Replace Windows & Blinds - MSHP Troop B Headquarters & Crime Lab :: State of Missouri Office of Administration](#) Prospective Bidders contact American Document Solutions, 1400 Forum Blvd Suite 1C, Columbia MO 65201, 573-446-7768 to order official plans and specifications.
8. **All bids shall be submitted on the bid form without additional terms and conditions, modifications, or stipulations. Each space on the bid form shall be properly filled including a bid amount for the alternates. Failure to do so will result in rejection of the bid.**
9. **MBE/WBE/SDVE participation requirements can be found in DIVISION 00. The MBE/WBE/SDVE participation goals are 10%/10%/3% (NOT CHANGED), respectively.**

Only certified firms as of the bid opening date can be used to satisfy the MBE/WBE/SDVE participation goals for this project. If a bidder is unable to meet a participation goal, a Good Faith Effort Determination Form must be completed. Failure to complete this process will result in rejection of the bid.

ATTACHMENTS:

1. Section 087100, Part 2, Item 2.14, Door Hardware Schedule.
2. Sheet A-100, Revised May 7, 2026.
3. Sheet A-500, Revised May 7, 2026.

May 7, 2026

END ADDENDUM NO. 2

SECTION 087100 DOOR HARDWARE
PART 2 PRODUCTS
2.14 DOOR HARDWARE SCHEDULE

Door Type D1:

- 3 hinges
- Entry lockset (lever knobs)
- Electric strike (existing keypad to remain and be reconnected)
- Latch protector
- Closer
- Threshold
- Sweep
- Weatherstripping

Door Type D2:

- 3 hinges
- Entry lockset (lever knobs)
- Electric strike (existing keypad to remain and be reconnected)
- Latch protector
- Closer
- Threshold
- Sweep
- Weatherstripping

Door Type D3:

- 3 hinges
- Entry lockset (lever knobs)
- Electric strike (existing keypad to remain and be reconnected)
- Latch protector
- Closer
- Threshold
- Sweep
- Weatherstripping

Door Type D4:

- 3 hinges
- Entry lockset (lever knobs)
- Electric strike (existing keypad to remain and be reconnected)
- Latch protector
- Closer
- Threshold
- Sweep
- Weatherstripping

Door Type D5:

As specified in Section 083613, Sectional Doors

Door Type D6:

3 hinges
Cylinder lock
Push/Pull
Closer
Threshold
Sweep
Weatherstripping



Brad M. Schaefer - Architect
MO# A-2009027294

**CONSTRUCTION
DOCUMENTS**

OFFICE OF ADMINISTRATION
DIVISION OF FACILITIES
MANAGEMENT,
DESIGN AND CONSTRUCTION

DEPARTMENT OF
PUBLIC SAFETY
MISSOURI STATE
HIGHWAY PATROL

REPLACE WINDOWS
AND BLINDS

TROOP B HEADQUARTERS
BUILDING & CRIME LAB
308 PINE CREST DRIVE
MACON, MISSOURI 63552

PROJECT # R2509-01
SITE # 6003
ASSET # 8136003004
8136003005

REVISION: ADDENDUM 2
DATE: 7 MAY 2026
REVISION: _____
DATE: _____
REVISION: _____
DATE: _____

ISSUE DATE: _____

CAD DWG FILE: _____
DRAWN BY: MLB
CHECKED BY: BMS
DESIGNED BY: MLB

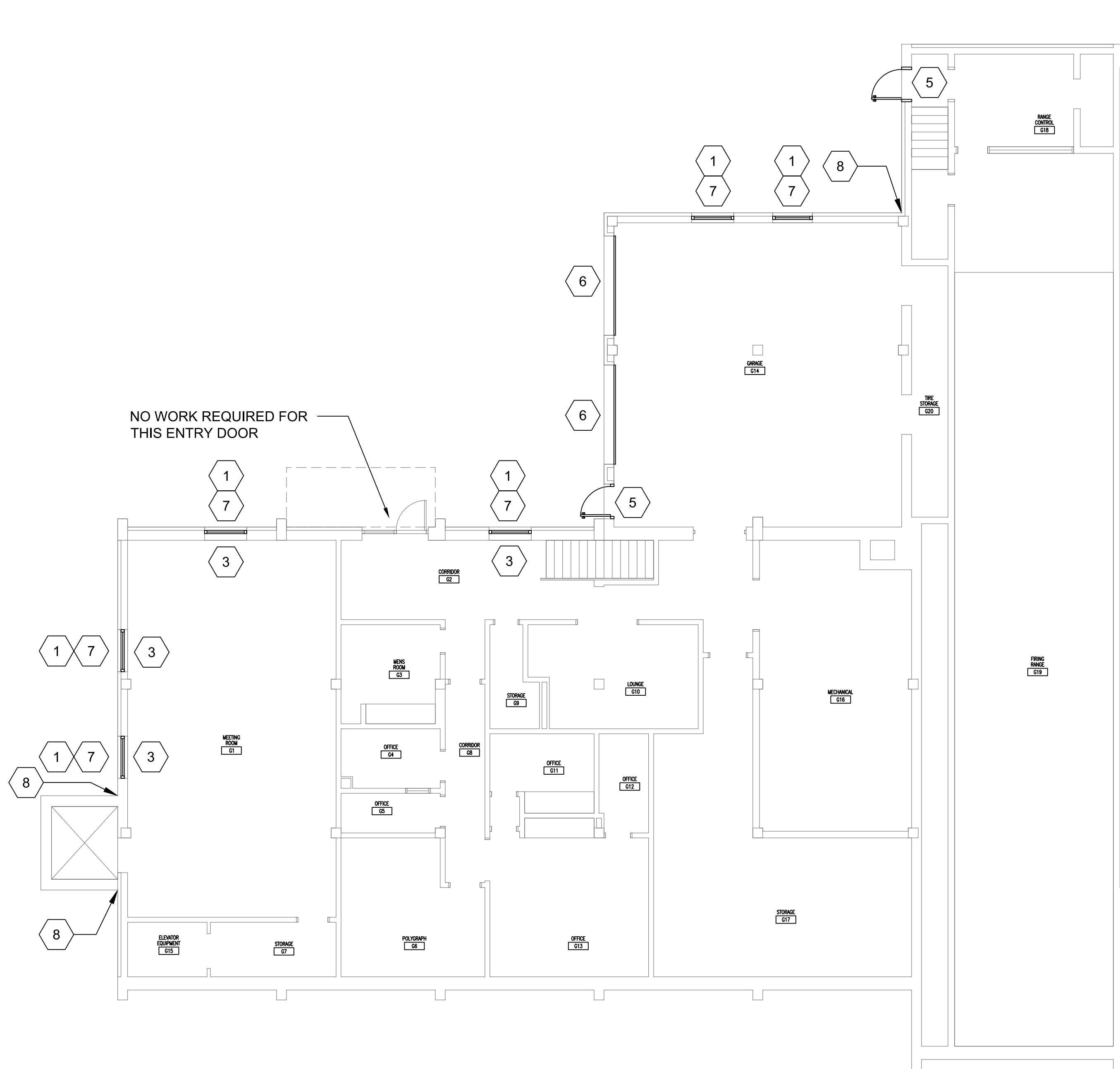
SHEET TITLE:
FLOOR PLANS

SHEET NUMBER:

A-100

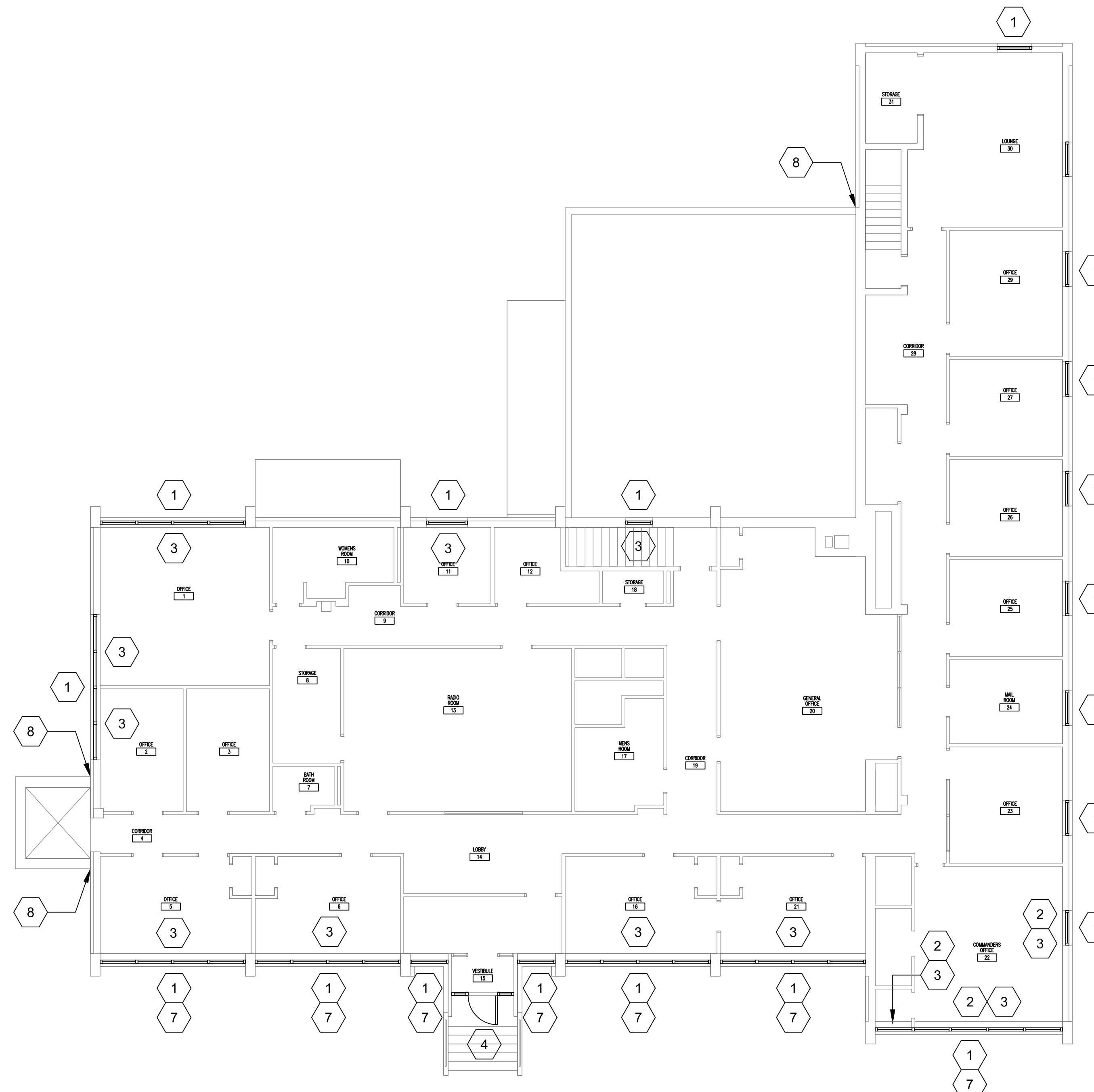
2 OF 4 SHEETS

10/15/2025

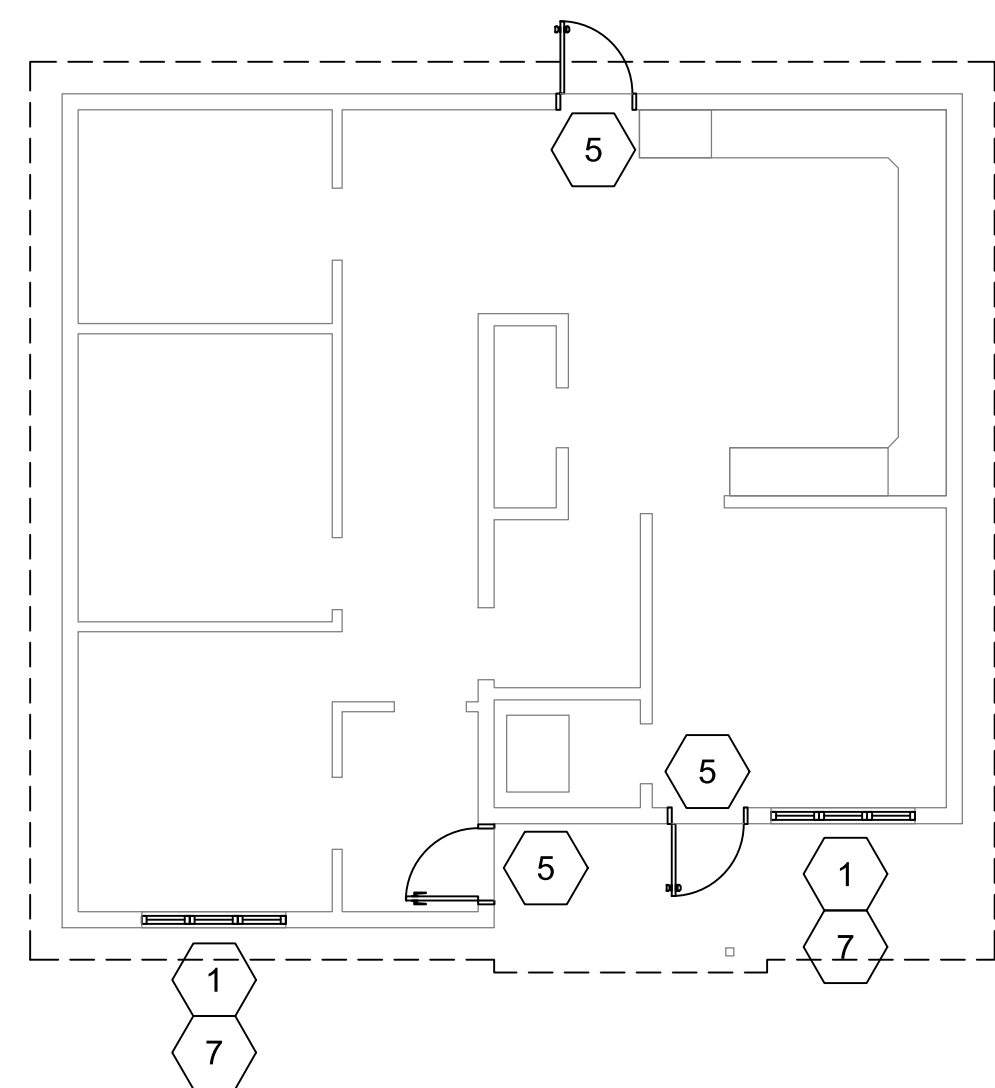


NO WORK REQUIRED FOR THIS ENTRY DOOR

1 LOWER LEVEL FLOOR PLAN
1/8"=1'-0"
NORTH



2 MAIN LEVEL FLOOR PLAN
1/8"=1'-0"
NORTH



3 CRIME LAB FLOOR PLAN
1/8"=1'-0"
NORTH

KEY NOTES

- 1 REMOVE AND DISPOSE OF EXISTING WINDOW, INCLUDING SEALANT, FRAME, AND GLAZING. INSTALL NEW WINDOW, INCLUDING FRAME, GLAZING AND SEALANT.
- 2 REMOVE AND DISPOSE OF MARBLE SILL. INSTALL NEW 5/8" THICK SOLID SURFACE SILL.
- 3 REMOVE AND DISPOSE OF EXISTING WINDOW BLINDS. INSTALL NEW WINDOW BLINDS.
- 4 REMOVE AND DISPOSE OF EXISTING ALUMINUM STOREFRONT, INCLUDING SEALANT, FRAMES, DOORS, HARDWARE, THRESHOLD, AND GLAZING. DISCONNECT ANY ELECTRICAL CONNECTIONS FOR ELECTRONIC HARDWARE. INSTALL NEW ALUMINUM STOREFRONT, INCLUDING SEALANT, FRAMES, DOORS HARDWARE, THRESHOLD AND GLAZING. RECONNECT ANY ELECTRICAL CONNECTIONS FOR ELECTRONIC HARDWARE.
- 5 REMOVE AND DISPOSE OF EXISTING HOLLOW METAL DOOR AND FRAME, INCLUDING SEALANT, HARDWARE, AND THRESHOLD. DISCONNECT ANY ELECTRICAL CONNECTIONS FOR ELECTRONIC HARDWARE. INSTALL NEW HOLLOW METAL DOOR AND FRAME, INCLUDING SEALANT, HARDWARE, AND THRESHOLD. RECONNECT ANY ELECTRICAL CONNECTIONS FOR ELECTRONIC HARDWARE. PAINT INTERIOR AND EXTERIOR SURFACES OF NEW DOOR AND FRAME.
- 6 REMOVE AND DISPOSE OF EXISTING SECTIONAL OVERHEAD DOOR, INCLUDING TRACK, WEATHERSTRIPPING, AND DOOR OPERATOR. DISCONNECT ELECTRICAL CONNECTION FOR DOOR OPERATOR. INSTALL NEW INSULATED SECTIONAL OVERHEAD DOOR, INCLUDING TRACK, WEATHERSTRIPPING, AND DOOR OPERATOR. RECONNECT ELECTRICAL FOR DOOR OPERATOR.
- 7 ALTERNATE NUMBER 1: INSTALL SECURITY GLAZING FILM ON GLASS OF THIS WINDOW. SEE SPECIFICATION SECTION 012300 FOR ALTERNATES AND SPECIFICATION SECTION 088853 FOR SECURITY GLAZING FILM. SECURITY GLAZING FILM TO BE INSTALLED ON VISION GLASS ONLY, NOT ON SPANDREL GLASS.
- 8 REMOVE PCB CONTAINING SEALANT FROM EXPANSION JOINTS. INSTALL NEW BACKING MATERIAL AND RESEAL EXPANSION JOINTS. SEE SPECIFICATION SECTION 028213 FOR PCB ABATEMENT REQUIREMENTS.

GENERAL NOTES

- 1. THE CONTRACTOR SHALL COORDINATE ALL ACTIVITIES WITH OWNER'S DESIGNATED REPRESENTATIVE.
- 2. THE CONTRACTOR SHALL NOT IMPEDE THE OPERATION OF THE FACILITY IN ANY MANNER WHILE CONSTRUCTION IS UNDERWAY.
- 3. THE CONTRACTOR SHALL FIELD VERIFY ALL EXISTING DIMENSIONS.
- 4. THE CONTRACTOR SHALL VERIFY THE SIZE AND THICKNESS OF ALL NEW MATERIALS TO BE USED.
- 5. THE CONTRACTOR SHALL FIELD VERIFY ALL EXISTING CONDITIONS TO ENSURE PROPER COMPLETION OF THE NEW WORK.
- 6. THE CONTRACTOR SHALL REMOVE ALL OFFICE FURNITURE AND EQUIPMENT WITHIN THE AREA OF WORK. TEMPORARY STORAGE OF FURNITURE AND EQUIPMENT SHALL BE COORDINATED WITH THE OWNER'S DESIGNATED REPRESENTATIVE. THE CONTRACTOR SHALL MOVE FURNITURE AND EQUIPMENT BACK TO ORIGINAL LOCATION AFTER WORK IS COMPLETE IN THAT AREA.
- 7. THE CONTRACTOR SHALL PROTECT ALL EXISTING FURNITURE AND EQUIPMENT FROM DUST, DIRT, OR DAMAGE DURING ALL CONSTRUCTION ACTIVITIES.
- 8. PROTECT EXISTING DRYWALL SURFACES. PATCH ANY DRYWALL SURFACES DAMAGED AS A RESULT OF WINDOW REPLACEMENT WORK. PAINT TO MATCH SURROUNDING SURFACES. ANY PAINTING REQUIRED SHALL BE FROM EDGE-TO-EDGE OR CORNER-TO-CORNER.
- 9. PROTECT EXISTING SUSPENDED CEILING DURING REPLACEMENT WORK. REMOVE EXISTING CEILING AND SUSPENSION GRID AS REQUIRED TO CONDUCT REPLACEMENT WORK. REINSTALL CEILING AND SUSPENSION GRID WHEN REPLACEMENT WORK IS COMPLETE. REPLACE ANY CEILING TILE OR SUSPENSION GRID DAMAGED AS A RESULT OF WINDOW REPLACEMENT WORK.
- 10. PROTECT MASONRY SURFACES DURING REPLACEMENT WORK. THOROUGHLY REMOVE ANY SEALANT RESIDUE BEFORE APPLYING NEW SEALANT. CLEAN ANY MASONRY SURFACES SOILED BY WINDOW REPLACEMENT WORK. PATCH ANY MASONRY DAMAGED AS A RESULT OF WINDOW REPLACEMENT WORK. PATCH TO MATCH SURROUNDING MASONRY.
- 11. PROTECT HVAC UNITS UNDER THE WINDOWS. REPAIR ANY UNITS DAMAGED AS A RESULT OF WINDOW REPLACEMENT WORK.
- 12. PROTECT EXISTING WOOD PANELING WHERE IT OCCURS. REPAIR OR REPLACE ANY WOOD PANELING DAMAGED AS A RESULT OF WINDOW REPLACEMENT WORK.
- 13. THE CONTRACTOR SHALL PROTECT ALL EXISTING BUILDING SURFACES FROM DUST, DIRT, OR DAMAGE DURING ALL CONSTRUCTION ACTIVITIES.
- 14. THE CONTRACTOR SHALL REMOVE AND DISPOSE OF ALL EXISTING MATERIALS SHOWN TO BE REMOVED.
- 15. DO NOT REMOVE ANY MORE DOORS OR WINDOWS THAN CAN BE REPLACED IN THE SAME DAY.
- 16. THE CONTRACTOR SHALL ENSURE THAT THE BUILDING IS SECURE AND WEATHER TIGHT AT THE END OF EACH WORKDAY.
- 17. PROVIDE ALL MATERIALS AND ACCESSORIES NECESSARY FOR A COMPLETE INSTALLATION.
- 18. INSTALLATION OF ALL NEW MATERIALS SHALL BE IN STRICT ACCORDANCE WITH MANUFACTURER'S INSTRUCTIONS.
- 19. THE CONTRACTOR SHALL STORE MATERIALS ONLY IN APPROVED AREAS ON THE SITE.
- 20. REPAIR ANY DAMAGE MADE TO BUILDINGS AND GROUNDS BY CONSTRUCTION ACTIVITIES.
- 21. THE CONTRACTOR SHALL REPAIR ANY LAWN AREAS DISTURBED BY CONSTRUCTION.
- 22. THE CONTRACTOR SHALL THOROUGHLY CLEAN ALL AFFECTED AREAS AFTER ALL WORK IS COMPLETED. PICK UP AND PROPERLY DISPOSE OF ALL FASTENERS, DEBRIS, AND EXTRA MATERIAL NOT MEANT TO BE LEFT WITH THE OWNER.
- 23. THE CONTRACTOR SHALL THOROUGHLY CLEAN THE WINDOWS, INSIDE AND OUT, AT THE END OF THE PROJECT.

CAUTION

- 1. POLYCHLORINATE BIPHENYL (PCB) CONTAINING MATERIAL HAS BEEN FOUND IN EXTERIOR EXPANSION JOINTS.
- 2. SEE APPENDIX A, ENVIRONMENTAL INSPECTION REPORT, FOR DETAILS.
- 3. SEE APPENDIX B, PCB LOCATION DRAWING FOR LOCATION OF PCB CONTAINING MATERIALS.
- 4. SEE SPECIFICATION SECTION 028213 FOR PCB ABATEMENT REQUIREMENTS.



Brad M. Schaefer - Architect
MO# A-2009027294

CONSTRUCTION DOCUMENTS

OFFICE OF ADMINISTRATION
DIVISION OF FACILITIES
MANAGEMENT,
DESIGN AND CONSTRUCTION

DEPARTMENT OF
PUBLIC SAFETY
MISSOURI STATE
HIGHWAY PATROL

REPLACE WINDOWS
AND BLINDS

TROOP B HEADQUARTERS
BUILDING & CRIME LAB
308 PINE CREST DRIVE
MACON, MISSOURI 63552

PROJECT # R2509-01
SITE # 6003
ASSET # 8136003004
8136003005

REVISION: ADDENDUM 2
DATE: 7 MAY 2026
REVISION: _____
DATE: _____
REVISION: _____
DATE: _____
ISSUE DATE: _____

CAD DWG FILE: _____
DRAWN BY: MLB
CHECKED BY: BMS
DESIGNED BY: MLB

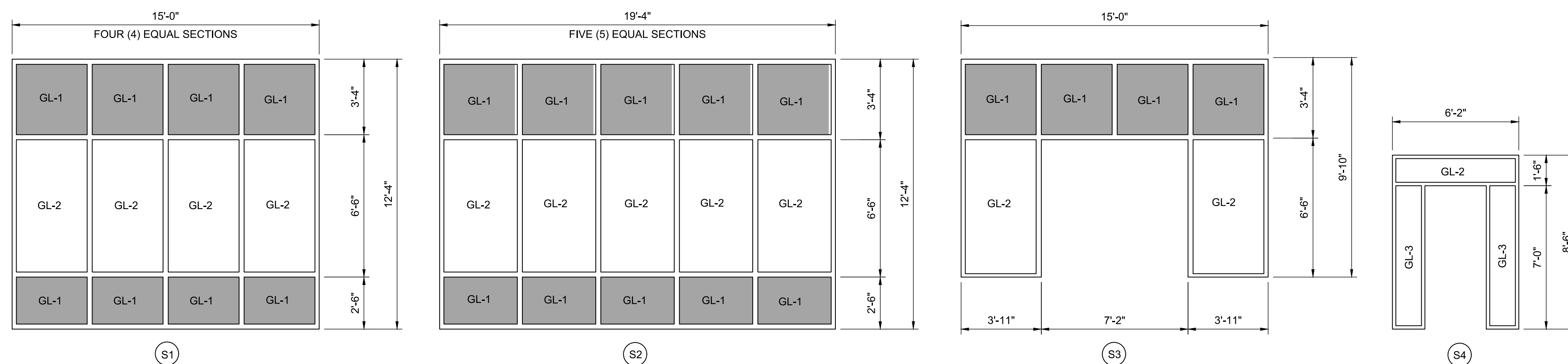
SHEET TITLE:
DETAILS

SHEET NUMBER:

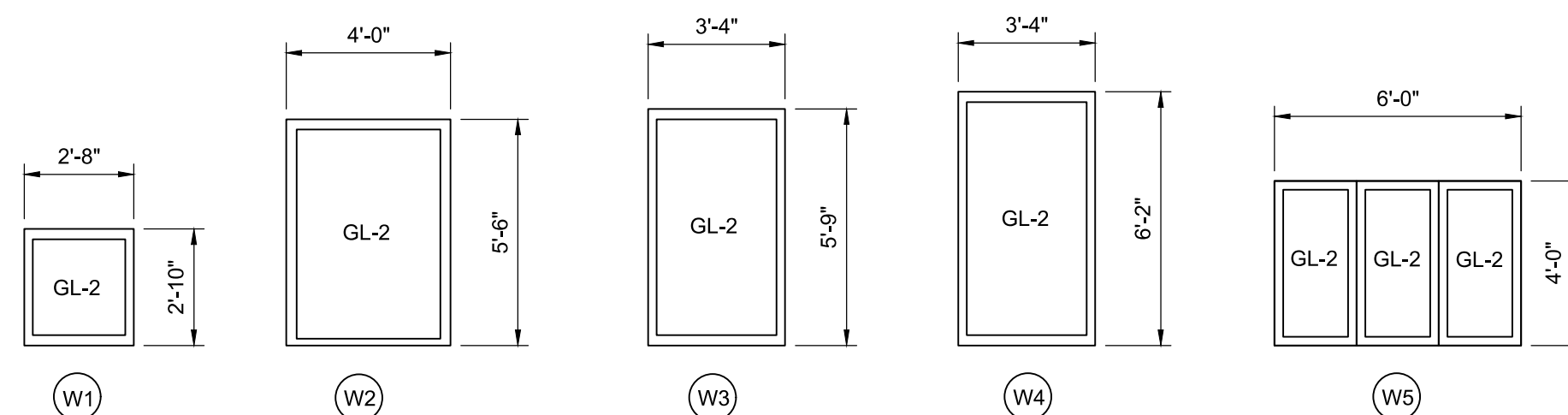
A-500

4 OF 4 SHEETS

10/15/2025



1 STOREFRONT TYPES
1/4"=1'-0"

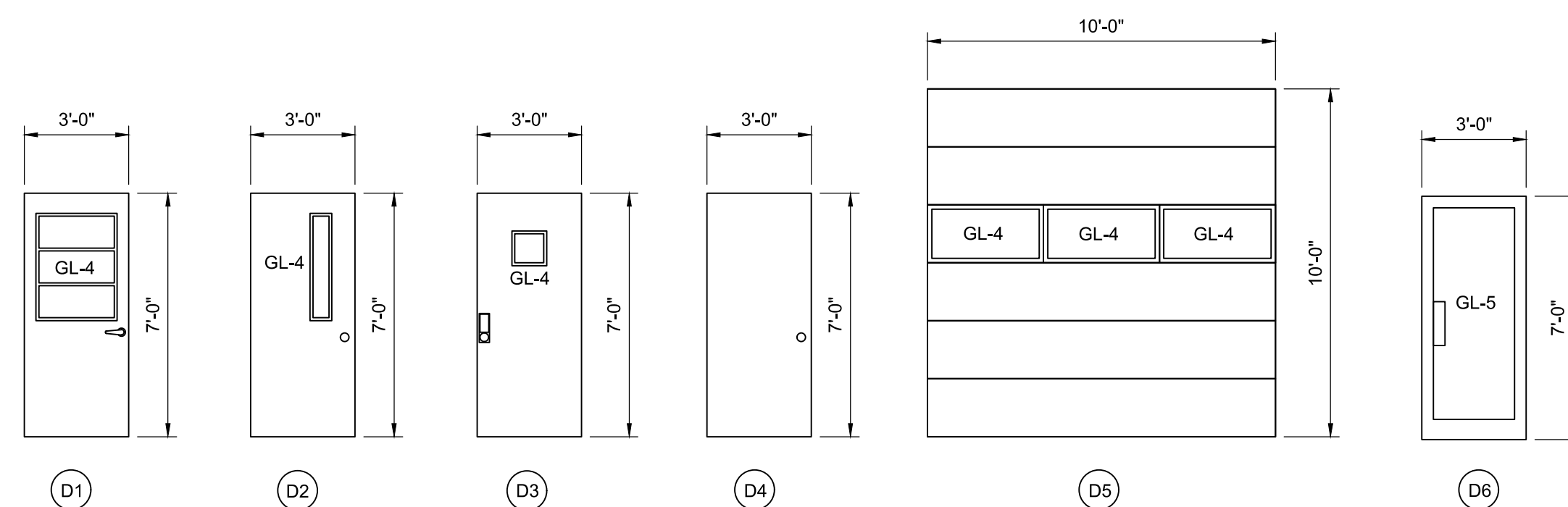


2 WINDOW TYPES
1/4"=1'-0"

WINDOW SCHEDULE							
MARK	SIZE (WxH)	FRAME MATERIAL	FRAME TYPE	GLAZING	HEAD	JAMB	SILL
W1	9'-0" x 7'-6"	ALUMINUM	FIXED	GL-2	6/A-500	SIMILAR TO 6/A-500	6/A-500
W2	12'-0" x 7'-6"	ALUMINUM	FIXED	GL-2	6/A-500	SIMILAR TO 6/A-500	6/A-500
W3	6'-0" x 4'-0"	ALUMINUM	FIXED	GL-2	6/A-500	SIMILAR TO 6/A-500	6/A-500
W4	7'-0" x 2'-6"	ALUMINUM	FIXED	GL-2	6/A-500	SIMILAR TO 6/A-500	6/A-500
W4	7'-0" x 2'-6"	ALUMINUM	FIXED	GL-2	VERIFY	VERIFY	VERIFY

NOTE: VERIFY WINDOW DIMENSIONS FOR EACH OPENING.

WINDOW GLAZING	
TYPE	DESCRIPTION
GL-1	1" INSULATED SPANDREL GLASS, BLUE TINTED, LOW-E
GL-2	1" INSULATED GLASS, BLUE TINTED, LOW-E
GL-3	1" INSULATED GLASS, TEMPERED, BLUE TINTED, LOW-E

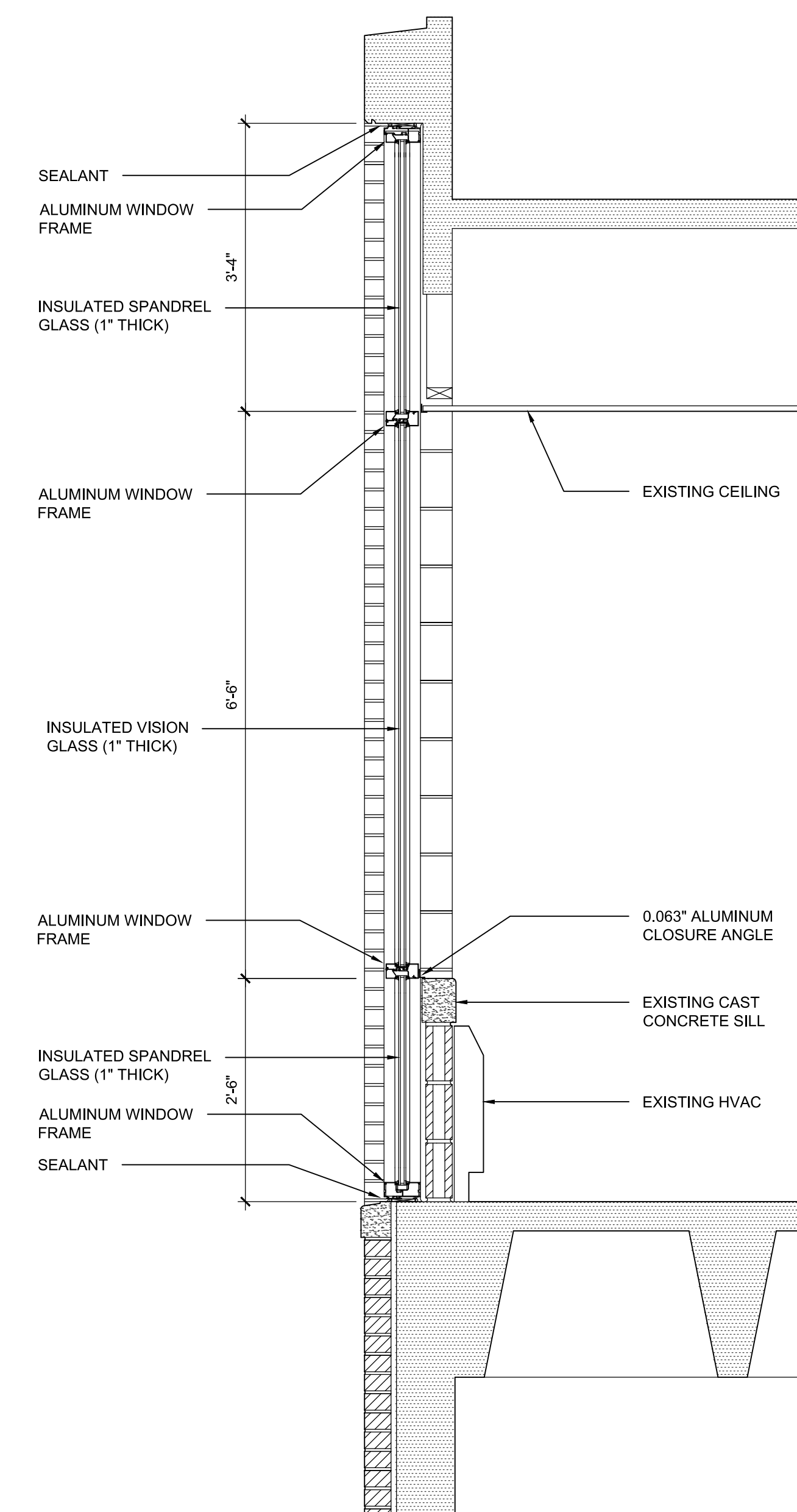


3 DOOR TYPES
1/4"=1'-0"

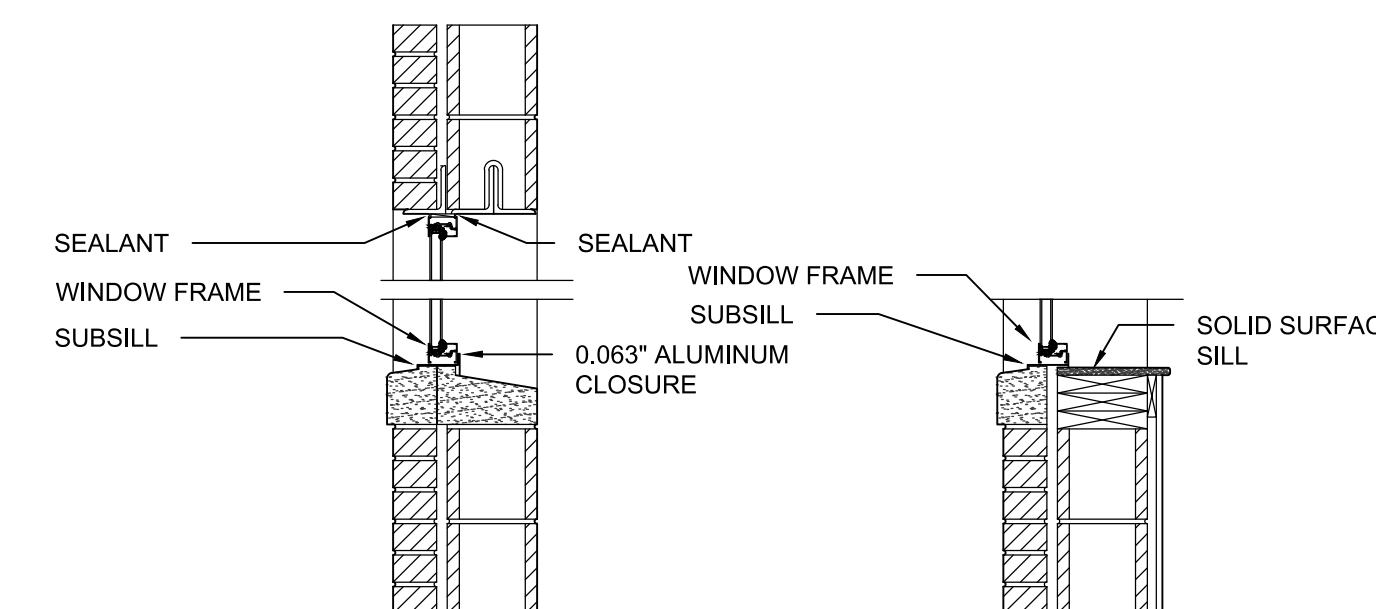
DOOR SCHEDULE							
MARK	SIZE (WxH)	FRAME MATERIAL	FRAME TYPE	GLAZING	HEAD	JAMB	SILL
D1	3'-0" x 7'-0"	HOLLOW METAL	HOLLOW METAL	GL-4	VERIFY	VERIFY	VERIFY
D2	3'-0" x 7'-0"	HOLLOW METAL	HOLLOW METAL	GL-4	VERIFY	VERIFY	VERIFY
D3	3'-0" x 7'-0"	HOLLOW METAL	HOLLOW METAL	GL-4	VERIFY	VERIFY	VERIFY
D4	3'-0" x 7'-0"	HOLLOW METAL	HOLLOW METAL	GL-4	VERIFY	VERIFY	VERIFY
D5	10'-0" x 10'-0"	EXISTING STEEL	NA	GL-4	VERIFY	VERIFY	VERIFY
D6	3'-0" x 7'-0"	ALUMINUM	ALUMINUM	GL-5	VERIFY	VERIFY	VERIFY

NOTES:
VERIFY DOOR AND FRAME DIMENSIONS FOR EACH OPENING.
PROVIDE NEW HARDWARE TO MATCH EXISTING HARDWARE FOR EACH DOOR TO BE REPLACED.

DOOR GLAZING	
TYPE	DESCRIPTION
GL-4	1" INSULATED GLASS, TEMPERED, CLEAR, LOW-E
GL-5	1" INSULATED GLASS, TEMPERED, BLUE TINTED, LOW-E



5 TYPICAL WINDOW-WALL SECTION
3/4"=1'-0"



6 TYPICAL WINDOW SECTION
3/4"=1'-0"

ORIGINAL BUILDING
ADDITION