

Upgrade Lighting to LED

Joint Forces Reserve Center

St. Louis, Missouri

WES

WEBB
ENGINEERING
SERVICES INC.

CONSULTING
ENGINEERS

1400 South 3rd Street, Suite 201
St. Louis, Missouri 63104
314.588.0600
fax 314.588.0604
www.webb-engineering.com

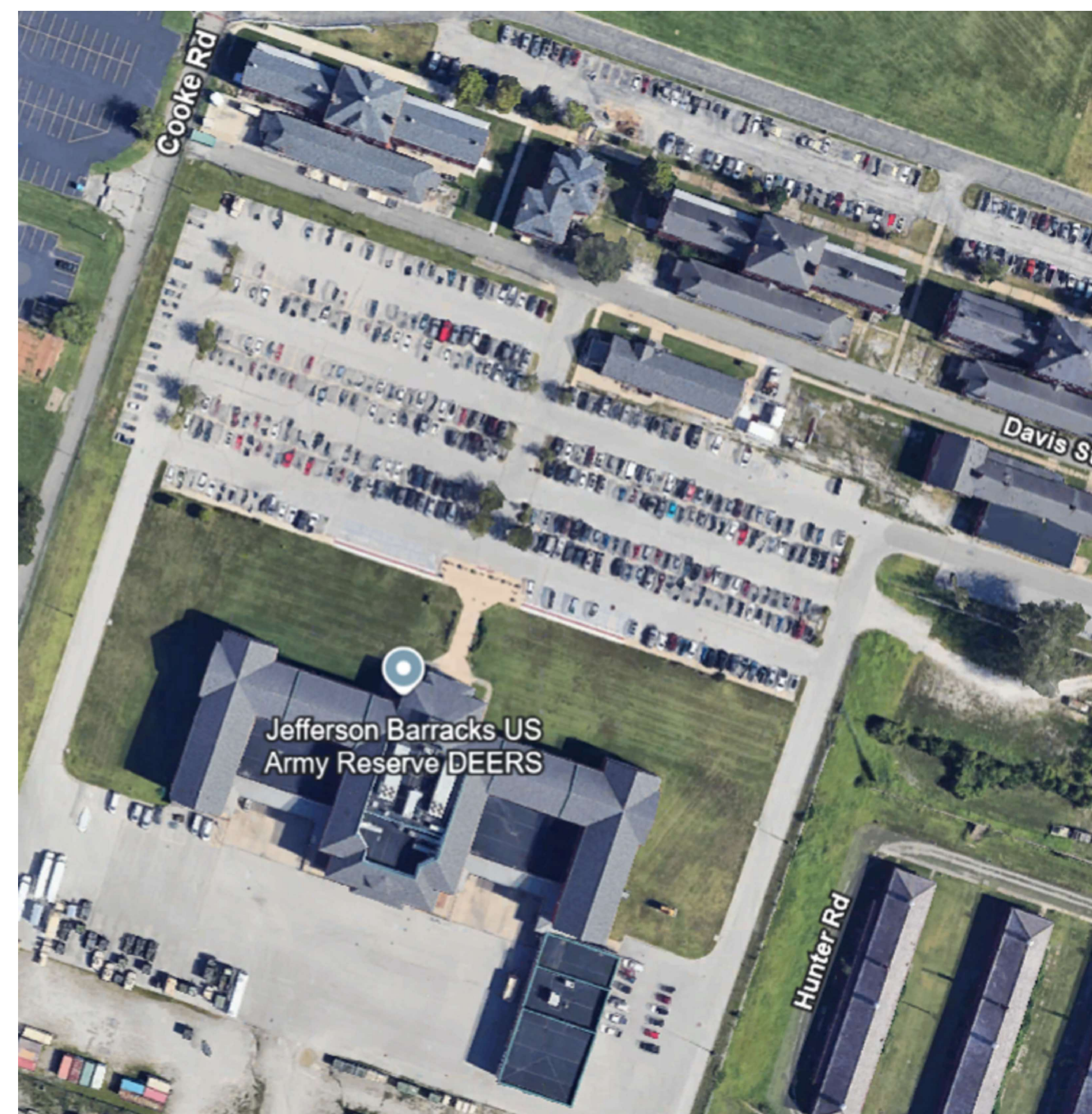
OWNER: STATE OF MISSOURI
MICHAEL L. PARSON,
GOVERNOR
MISSOURI NATIONAL GUARD

PROJECT
MANAGEMENT: OFFICE OF ADMINISTRATION
DIVISION OF FACILITIES MANAGEMENT,
DESIGN AND CONSTRUCTION

DESIGNER: WEBB ENGINEERING SERVICES, INC.

PROJECT NUMBER: T2143-01

SITE NUMBER: 6303
FACILITY NUMBER: 8136303051



AREA LOCATION PLAN - DEERS, BUILDING 24

CODE STUDY	
APPLICABLE CODES	
ACCESSIBILITY:	1990 ADA STANDARDS FOR ACCESSIBLE DESIGN
ENVIRONMENTAL:	US ENVIRONMENTAL PROTECTION AGENCY (EPA)
LIFE SAFETY CODE:	2024 NFPA 101
BUILDING CODE:	2015 INTERNATIONAL EXISTING BUILDING CODE (IEBC)
FIRE CODE:	2018 INTERNATIONAL FIRE PREVENTION CODE
ELECTRICAL CODE:	2017 INTERNATIONAL ELECTRICAL CODE
ENERGY CONSERVATION CODE:	2019 ASHRAE 90.1

SHEET NUMBER:

G001

1 OF 12 SHEETS
December 19, 2024



THE PROFESSIONAL WHOSE SIGNATURE AND PERSONAL SEAL APPEARS ON THIS SHEET ASSUMES RESPONSIBILITY ONLY FOR WHAT APPEARS ON THIS SHEET AND DISCLAIMS RESPONSIBILITY FOR ALL OTHER PLANS, SPECIFICATIONS, ESTIMATES, REPORTS OR OTHER DOCUMENTS. INSTRUMENTS NOT SEALED BY THE UNDERSIGNED FOR ANY PART OR PARTS OF THE PROJECT TO WHICH THIS SHEET REFERS. RESPONSIBILITY FOR PORTIONS OF THE PROJECT NOT PREPARED UNDER MY SUPERVISION IS DISCLAIMED. REVISIONS BY CONTRACTOR, OWNER, OR OTHERS ARE NOT A PART OF THE PROJECT WHICH THIS SEAL INDICATES RESPONSIBILITY.

CONSULTANT

WES

WEBB
ENGINEERING
SERVICES INC.
CONSULTING ENGINEERS

1400 South 3rd Street
St. Louis, Missouri 63104
314.588.0600 fax
314.588.0604
www.webb-engineering.com

OFFICE OF ADMINISTRATION
DIVISION OF FACILITIES
MANAGEMENT
DESIGN AND CONSTRUCTION

MISSOURI NATIONAL
GUARD
OFFICE OF ADJUTANT
GENERAL
FACILITIES DIVISION

UPGRADE LIGHTING TO
LED
JOINT ARMED FORCES
RESERVE CENTER
JEFFERSON BARRACKS
24 DAVIS STREET
ST. LOUIS, MISSOURI 63125

PROJECT # T2143-01
SITE # 6303
ASSET # 8136303051

REVISION:
DATE:
REVISION:
DATE:
REVISION:
DATE:
ISSUE DATE: 12/19/2024

CONSULT FILE: 24006
DRAWN BY: JLC
CHECKED BY: MRW
DESIGNED BY: SIW

SHEET TITLE:

SEISMIC BLOCK,
GENERAL NOTES,
DETAILS & LEGEND

SHEET NUMBER:

E001

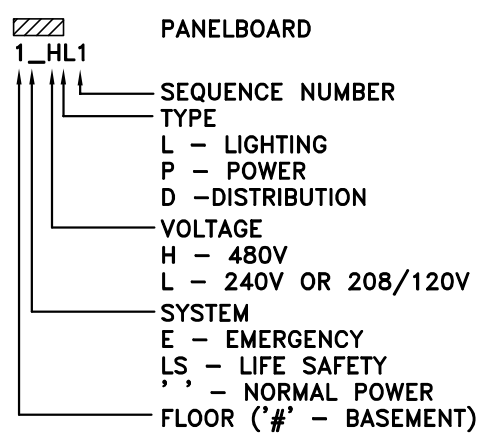
LIGHTING FIXTURE SCHEDULE

PLAN MARK (TYPE)	NEW LED FIXTURE BASIS OF DESIGN MANUFACTURER/CATALOG NO.	REMARKS	MIN. INITIAL LAMP LUMENS	MIN. COLOR REND. INDEX	CORR. COLOR TEMP. K
A	ABL-LITHONIA LIGHTING STAKS 2X4 AL06 SSW7	2X4 LED LOW PROFILE, LOW GLARE CENTER-BASKET STYLE TROFFER WITH SWITCHABLE OUTPUT LEVEL & COLOR TEMPERATURE, 1.9" DEPTH, IC & DAMP LOCATION RATED WITH INTEGRAL T-BAR CLIPS, 120/277 VOLT DRIVER, DIMMING TO 10%, SATIN WHITE DIFFUSER.	5000	80	3500
A2	ABL-LITHONIA LIGHTING STAKS 2X4 AL06 SSW7	SAME AS A FIXTURE WITH SLIGHTLY HIGHER LUMEN OUTPUT SELECTION USED IN SELECT OFFICES.	6000	80	3500
A3	ABL-LITHONIA LIGHTING STAKS 2X4 AL06 SSW7	CLASSROOM FIXTURE. PROVIDE (2) ABL-nLIGHT NP0DMA DX IV 3WAY DIMMER SWITCHES BY EACH DOOR AND NPPI6 D ETR BAA REMOTE POWER SUPPLY ABOVE DROP CEILING	5000	80	3500
A5	ABL-LITHONIA LIGHTING STAKS 2X4 AL06 SSW7	ASSEMBLY HALL AND SELECT OFFICES FIXTURE SAME FIXTURE AS A	5000	80	3500
AEM	ABL-LITHONIA LIGHTING STAKS 2X4 AL06 SSW7 E10WLCP	SIMILAR TO A FIXTURE WITH 90 MINUTE EMERGENCY DRIVER FOR USE IN GENERAL AREAS IN GARAGE BLDG.	5000	80	3500
B	ABL-LITHONIA LIGHTING FMSATL 16 208 40 BN	BRUSHED NICKEL TRIM CEILING MOUNT FIXTURE WITH 16" DIAMETER OPAL LENS	1682	80	4000
C1	ABL-LITHONIA LIGHTING SBL4 6000LM 80CRI 35K MIN10 GZT MVOLT	4' LONG, 2 5/8" TALL, 8 5/8" WIDE LED WRAPAROUND FIXTURE PROVIDE WITH MOUNTING HARDWARE TO MATCH EXISTING CONFIGURATION	6000	80	3500
C2	ABL-LITHONIA LIGHTING LBL4 6000LM 80CRI 35K MIN10 GZT MVOLT	4' LONG, 2 3/4" TALL, 10" WIDE LED WRAPAROUND FIXTURE PROVIDE WITH MOUNTING HARDWARE TO MATCH EXISTING CONFIGURATION	6000	80	3500
C3	ABL-LITHONIA LIGHTING BLWP4 60L ADP GZ10 LP835	4' LONG, 3 1/2" TALL, 5 1/2" WIDE LED WRAPAROUND FIXTURE	6000	80	3500
EM	ABL-LITHONIA LIGHTING ELM41 M12	PROVIDE WHITE, DUAL ADJUSTABLE HEAD EMERGENCY FIXTURE WITH MINIMUM 90 MINUTES OF NICKEL-CADMIUM BATTERY BACK-UP	N/A	N/A	N/A
F1	ABL-LITHONIA LIGHTING CSS L48 AL03 MVOLT SSW3 80CRI	48" LONG LED STRIP LIGHT WITH SELECTABLE CCT AND LUMEN, SURFACE OR SUSPENSION MOUNTING AS NOTED ON PLANS	3851	80	3500
F2	ABL-LITHONIA LIGHTING CLX L48 7000LM SEF FDL MVOLT GZ10 35K 80CRI WH	4' LONG, 2.72" TALL, 3.44" WIDE LED LOW PROFILE, ROUNDED LENS STRIP. PROVIDE MOUNTING TO MATCH EXISTING CONFIGURATION	7000	80	3500
F3	ABL-LITHONIA LIGHTING CLX L48 7000LM SEF FDL MVOLT GZ10 35K 80CRI WH	SAME AS F2 FIXTURE, BUT IN STAGGERED STRIP ARRANGEMENT	7000	80	3500
G	ABL-LITHONIA LIGHTING CLX L48 7000LM SEF FDL MVOLT GZ10 35K 80CRI WH	4' LONG, 2.72" TALL, 3.44" WIDE LED LOW PROFILE, ROUNDED LENS STRIP. PROVIDE MOUNTING TO MATCH EXISTING CONFIGURATION	7000	80	3500
K1	GOTHAM LIGHTING EV06SH 35/20 DFF SOL MVOLT E21	6" DOWNLIGHT FOR USE IN SHOWERS. PROVIDE WITH SHOWER TRIM RING WITH WHITE LENS.	1500	80	3500
L1	ABL-LITHONIA LIGHTING LDN6 35/20 L06 AR TRW LS MVOLT GZ10 GRA68 JZ	SAME AS K1 WITH HIGHER LUMENS PROVIDE WITH 8" MOUNTING RING FOR USE IN EXISTING 8" FIXTURE MOUNTING HOLE	2000	80	3500
L2	ABL-LITHONIA LIGHTING LDN6 35/25 L06 AR TRW LS MVOLT GZ10 GRA68 JZ	SAME AS L1 WITH HIGHER LUMENS PROVIDE WITH 8" MOUNTING RING FOR USE IN EXISTING 8" FIXTURE MOUNTING HOLE	2500	80	3500
L3	ABL-LITHONIA LIGHTING LDN6 35/25 L06 AR TRW LS MVOLT GZ10 GRA68 JZ	SAME AS L2 WITH HIGHER LUMENS PROVIDE WITH 8" MOUNTING RING FOR USE IN EXISTING 8" FIXTURE MOUNTING HOLE	3500	80	3500
M1	ABL-LITHONIA LIGHTING CLX L48 5000LM SEF WDL MVOLT GZ10 40K 80CRI WH	48" LONG, 5.27" WIDE, 4.01" TALL WHITE STEEL INDUSTRIAL STRIP FIXTURE WITH DIFFUSE LENS AND 12K UPLIGHT. PROVIDE MOUNTING TO MATCH EXISTING CONFIGURATION	5000	80	4000
M1EM	ABL-LITHONIA LIGHTING CLX L48 5000LM SEF WDL MVOLT GZ10 40K 80CRI E10WLCP SPD WH	SAME AS M1 WITH 10 WATT LINEAR EMERGENCY DRIVER AND 8KV SURGE PROTECTIVE DEVICE.	5000	80	4000
N1	SOLAS RAY / 55 WEST LLC HTJM-050-50-120-PG-PM	HAZARDOUS LOCATION FIXTURE LISTED FOR CLASS I, DIV 1, CLASS II DIV. 1&2, AND CLASS III DIV 1&2. PENDENT MOUNTED FROM STRUCTURE AT 8'-0" AFF	5000	80	5000
R1EM	SOLAS RAY / 55 WEST LLC HTJM-050-50-120-PG-PM	SAME AS N1 FOR USE WITH ETR REMOTE LOCATED 12V EMERGENCY POWER UNIT. PENDANT MOUNTED AT 9'-0" AFF BOTTOM OF FIXTURE	5000	80	5000
V	ABL-LITHONIA LIGHTING TWPX2 LED P1 40K MVOLT DDBXD	DARK BRONZE LED WALL PACK PROVIDE WITH BIRD SPIKES	3150	N/A	4000
V1	ANP LIGHTING BVF2002-CP3S0W18T540K-WM1763	BLACK LED OUTDOOR PENDANT WITH 20" DIAMETER DIFFUSER, TYPE 5 OPTICS AND 42" TALL, 28 3/4" DEEP WALL MOUNT BRACKET. ALSO SEE GENERAL NOTE 14.	4000	N/A	4000
V2	ECLIPSE LIGHTING LW-L-LED30-4K-UNV-WH	WHITE LED CEILING MOUNT OUTDOOR FIXTURE WITH 17" DIAMETER LENS. ALSO SEE GENERAL NOTE 14.	2600	80	4000
X1	ABL-LITHONIA LIGHTING LOM S W 3 R 120/277 EL N M6	WHITE LED SINGLE FACE EXIT SIGN WITH BATTERY BACK-UP AND RED LETTERS. REMOVE CHEVRONS TO MATCH EXISTING CONFIGURATION.	N/A	N/A	N/A
X2	ABL-LITHONIA LIGHTING LOM S W 3 R 120/277 EL N M6	SAME AS X1 FIELD CONFIGURED FOR DUAL FACE INSTALLATION	N/A	N/A	N/A
X3	ABL-LITHONIA LIGHTING LE S 1 R EL N	BRUSHED ALUMINUM FACE, BLACK BODY LED SINGLE FACE EXIT SIGN WITH BATTERY BACK-UP AND RED LETTERS. REMOVE CHEVRONS TO MATCH EXISTING CONFIGURATION.	N/A	N/A	N/A
X4	ABL-LITHONIA LIGHTING WLTE W 1 R EL SD	WHITE, WET LISTED EXIT FIXTURE FOR USE IN THE GARAGE BAYS WITH BATTERY BACK-UP	N/A	N/A	N/A
XEM	ABL-LITHONIA LIGHTING LHQM LED R M6	SAME AS X1 WITH EMERGENCY HEADS TO PROVIDE MINIMUM 90 MINUTES OF BATTERY BACK-UP	N/A	N/A	N/A

ELECTRICAL LEGEND AND ABBREVIATIONS (SEE SPECIFICATIONS & SCHEDULES)

NOTES: 1. IN GENERAL, SYMBOLS SHOWN WITH LIGHT LINES DENOTE EXISTING WORK. SYMBOLS SHOWN WITH HEAVY LINES DENOTE NEW WORK.

POWER EQUIPMENT



LIGHTING FIXTURES

LAY-IN LIGHTING FIXTURE
(A - DESIGNATES FIXTURE TYPE
1 - DESIGNATES CIRCUIT NUMBER
0 - DESIGNATES CONTROLLING SWITCH)

LAY-IN LIGHTING FIXTURE -
EMERGENCY POWER

LAY-IN LIGHTING FIXTURE -
NIGHT LIGHT FIXTURE

LAY-IN LIGHTING FIXTURE -
EMERGENCY POWER

WALL MOUNTED LINEAR LIGHTING FIXTURE
HEIGHT AS NOTED.

BATTERY OPERATED EMERGENCY LIGHTING UNIT

4' LONG LED WRAPAROUND FIXTURE

4' LONG LED LOW PROFILE, ROUNDED LENS STRIP

RECESSED OR SURFACE LIGHTING FIXTURE
EMERGENCY, OR LIFE SAFETY
IF SHADED AS ABOVE

WALL MOUNTED LIGHTING FIXTURE
EMERGENCY, OR LIFE SAFETY
IF SHADED AS ABOVE

LINEAR STRIP FIXTURE

BARE-LINEAR STRIP -
EMERGENCY POWER

EXIT SIGN DOUBLE-SIDED FIXTURE
DIRECTIONAL ARROWS AS INDICATED

EXIT SIGN SINGLE-SIDED FIXTURE
DIRECTIONAL ARROWS AS INDICATED

4' LONG LED INDUSTRIAL FIXTURE WITH 12K UPLIGHT

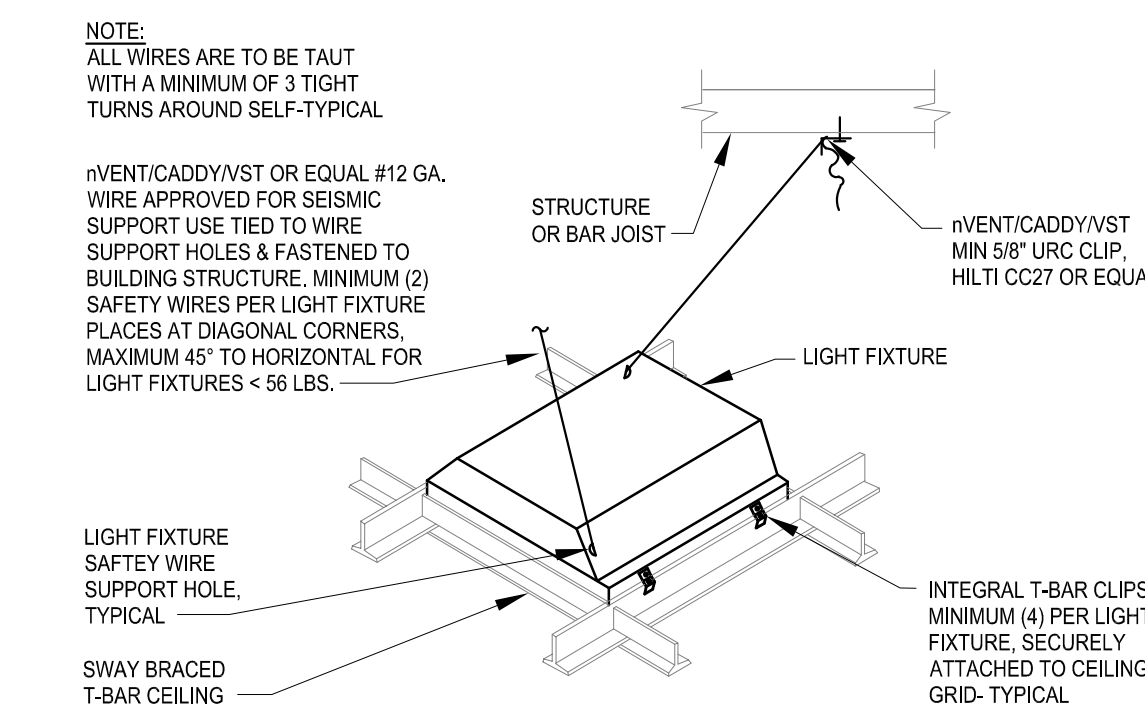
SHADING
INDICATES
FACE(S)

ABBREVIATIONS (ALL ABBREVIATIONS MAY NOT APPEAR IN THIS PROJECT)

AF - AMP FUSE
AFF - ABOVE FINISHED FLOOR
AHJ - AUTHORITY HAVING JURISDICTION
ALT - ALTERNATE
ARCH - ARCHITECTURAL
BEMS - BUILDING ENERGY MANAGEMENT SYSTEM
BOF - BOTTOM OF FIXTURE
C - CONDUIT
CB - CIRCUIT BREAKER
DWG - DRAWING
EC - ELECTRICAL CONTRACTOR
EM - EMERGENCY
EMT - ELECTRICAL METALLIC TUBING
ETBR - EXISTING TO BE RELOCATED
ETC - ETCETERA
ETR - EXISTING TO REMAIN
FA - FIRE ALARM
FACP - FIRE ALARM CONTROL PANEL
FS - FUSIBLE SWITCH
GC - GENERAL CONTRACTOR
GF - GROUND FAULT
GFI - GROUND FAULT CIRCUIT INTERRUPTER

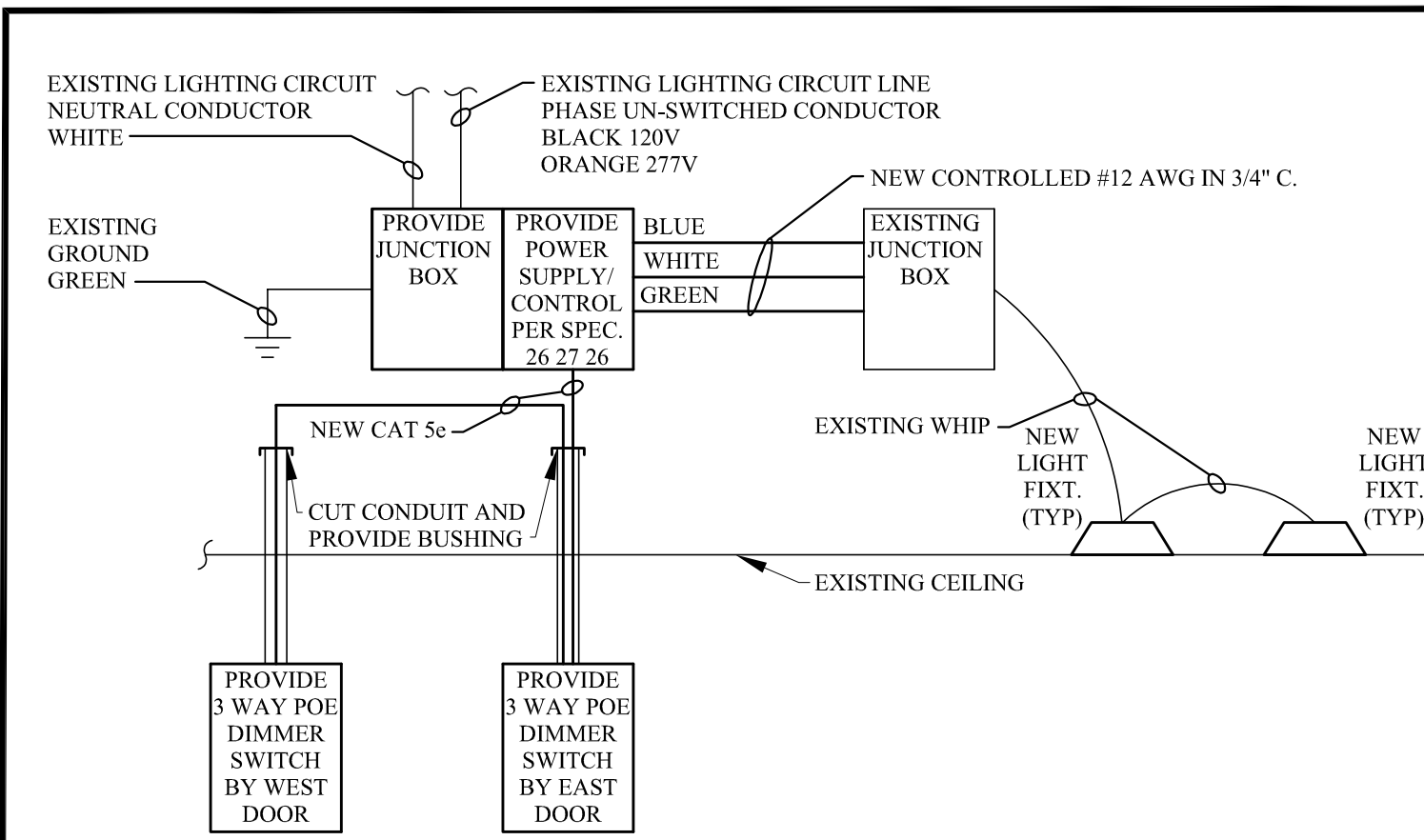
GRS - GROUND
G - GALVANIZED RIGID STEEL
MDP - MAIN DISTRIBUTION PANEL
MEZ - MEZZANINE
MH - MOUNTING HEIGHT
MIN - MINIMUM
MSW - MAIN SWITCH
MTR - METER
NEC - NATIONAL ELECTRIC CODE
NFS - NON-FUSED SWITCH
PNL - PANELBOARD

PROV - PROVIDE, TO MEAN FURNISH & INSTALL
PVC - POLYVINYL CHLORIDE CONDUIT
SW - SWITCH
REQ'D - REQUIRED
T - TELEPHONE
TYP - TYPICAL
UNO - UNLESS NOTED OTHERWISE
VFD - VARIABLE FREQUENCY DRIVE
XFMR - TRANSFORMER
WP - WEATHERPROOF



LAY-IN FIXTURE MOUNTING DETAIL

SCALE: NO SCALE



TYPICAL 3-WAY DIMMING WIRING DIAGRAM

SCALE: NO SCALE

DIAGRAM NOTES:
1. PROVIDE CONNECTION EXISTING LIGHTING CIRCUIT ABOVE ACCESSIBLE CEILING.
2. PROVIDE UL LISTED, PLENUM RATED, NON-BOOTED CAT 5e CABLES WITH RJ-45 JACKS FOR CONTROL CABLEING.
3. REMOVE EXISTING DIMMER SWITCH AND WIRING AND WIRING OVER ETHERNET (POE) 3 WAY DIMMER SWITCH IN EXISTING SWITCH BACK BOX. PROVIDE PLENUM RATED, NON-BOOTED CAT 5e CABLE IN EXISTING CONDUIT TO NEW POE 3 WAY DIMMER SWITCH AT OTHER DOOR BACK BOX AND TO NEW CONTROLLER / POWER SUPPLY ABOVE THE ACCESSIBLE CEILING. ALSO SEE SPECIFICATION SECTION 26-27.26 - WIRING DEVICES.



EXISTING TYPICAL LAY-IN PICTURE

SCALE: NO SCALE



EXISTING TYPICAL LIGHT SWITCH GROUP

SCALE: NO SCALE

GENERAL NOTES (APPLIES TO ALL SHEETS IN THIS SET)

- THE DESIGN INTENT IS FOR THE CONTRACTOR TO REMOVE, DISPOSE OF AND REPLACE EXISTING LIGHTING FIXTURES AND DIMMING SWITCHES IN THE EXISTING LOCATIONS WITH NEW LED LIGHTING FIXTURES PER LIGHTING FIXTURE SCHEDULE AND DIMMING CONTROL SYSTEMS PER SPECIFICATION SECTION 26-27.26 WHERE SHOWN ON THE FLOOR PLANS AT THE "JEERS" BUILDING 24 AND THE ASSOCIATED GARAGE BUILDING IN JEFFERSON BARRACKS. EXISTING LINE VOLTAGE TOGGLE SWITCHES ARE TO REMAIN IN PLACE.
- REMOVE AND REPLACE EXISTING LIGHTING FIXTURES ONE AREA AT A TIME RATHER THAN REMOVING ALL LIGHTING FIXTURES AT ONE TIME.
- MINIMUM WIRE SIZE SHALL BE #12 AWG COPPER IN 3/4" MINIMUM CONDUIT U.N.O. WIRING TO BE CONCEALED WHEREVER POSSIBLE WITHIN WALLS AND ABOVE CEILINGS. USE OF FLEXIBLE CABLE IS PERMITTED FROM JUNCTION BOX TO FIXTURE OR DEVICE IN ACCESSIBLE AREAS PER STATE AND LOCAL CODES PROVIDED THAT A GREEN GROUND WIRE IS PROVIDED AND LENGTHS OF FLEXIBLE CABLE DO NOT EXCEED 25'-0".
- CONTRACTOR TO CONNECT NEW LIGHTING FIXTURES TO EXISTING CIRCUITS AND EXISTING SEISMIC RESTRAINTS PER SEISMIC CODES AND ORDINANCES, ANY REQUIRED WIRING EXTENSIONS SHALL MAINTAIN EXISTING RACEWAY AND CONDUCTOR SIZE, TYPE AND COLOR.
- PROVIDE PLENUM RATED, NON-BOOTED, CAT 5e CONTROL CABLEING IN CONDUIT WITHIN WALLS AND SUPPORTED BY J-HOOKS ABOVE ACCESSIBLE CEILINGS. RE-USE OF EXISTING RACEWAY IS PERMISSIBLE ONCE EXISTING WIRING HAS BEEN REMOVED.
- CONTRACTOR TO REMOVE EXISTING LIGHTING FIXTURES AND DISPOSE OF PROPERLY. MOST OF THE EXISTING FIXTURES ARE FLUORESCENT. INCLUDE DISPOSAL FEES IN BID AND PRESENT DISPOSAL RECEIPTS TO OWNER FOR THEIR RECORDS.
- CONTRACTOR TO REMOVE EXISTING LIGHTING FIXTURES AND DISPOSE OF PROPERLY. MOST OF THE EXISTING FIXTURES ARE FLUORESCENT. INCLUDE DISPOSAL FEES IN BID AND PRESENT DISPOSAL RECEIPTS TO OWNER FOR THEIR RECORDS.
- ALL RECESSED DOWNLIGHTS MUST BE INSTALLED SO THAT THE BOTTOM OF THE THROAT IS EVEN WITH THE FINISHED CEILING PLANE WITH NO VISIBLE LIGHT LEAK. ALL HARDWARE, DRYWALL MOUNTING RINGS, FRAMES, ETC. TO ACCOMPLISH THIS TO BE IN BASE BID.
- EXISTING LIGHTING CIRCUITS, OCCUPANCY SENSORS, SEISMIC RESTRAINTS AND TOGGLE SWITCHES ARE TO REMAIN UNLESS NOTED OTHERWISE.
- ALL FIXTURES SHALL OPERATE AT 120 OR 277 VOLTS AS REQUIRED BY THE CIRCUITS AND/OR PANELS TO WHICH THEY ARE CONNECTED, SHALL HAVE A U.L. LABEL AND SELF-LANGUED REFLECTORS UNLESS OTHERWISE NOTED.
- CONTRACTOR IS RESPONSIBLE FOR ALL MISCELLANEOUS HARDWARE, CLIPS, CABLES, ANGLES, FRAMES, ETC. AS REQUIRED TO MOUNT THE FIXTURES IN OR ON THE SURFACES THEY ARE TO BE INSTALLED.
- EXISTING EXIT AND NIGHT LIGHTING FIXTURES IN BUILDING 24 ARE FED FROM PANEL 1LSHL1 PER RECORD PLANS.
- FIXTURE TYPES "V1" AND "V2" ARE CONTROLLED VIA A TIME CLOCK AND PHOTOCELL PER RECORD PLANS.



EXISTING TYPICAL CLASSROOM FRONT

SCALE: NO SCALE



EXISTING TYPICAL CLASSROOM BACK

SCALE: NO SCALE

ELECTRICAL SYSTEM COMPONENTS EARTHQUAKE LOAD RESISTANCE

RISK CATEGORY (IV)	ANCHORAGE TO FLOORS, ROOFS, ETC. (SEE NOTE 1 BELOW)	SWAY BRACING (SEE NOTE 1 BELOW)	LOCATION OF PROFESSIONALLY SEALED ANCHORAGE AND SWAY BRACING DETAILS	COMMENTS
LISTING OF EQUIPMENT AND SYSTEM COMPONENTS	NOT PROVIDED FOR PROJECT	PROVIDED FOR PROJECT	NOT PROVIDED FOR PROJECT	PROVIDED FOR PROJECT
LIGHTING FIXTURES		X		X
CIRCUITS AND CONDUIT		X	X	
1. IT IS THE BASIC INTENT OF THIS CODE BLOCK TO DECLARE WHETHER OR NOT ANCHORAGE AND SWAY BRACING IS BEING PROVIDED ON THE PROJECT. IF SO, TO DECLARE WHETHER OR NOT THE DETAILS ARE SHOWN ON THE PLANS OR WILL BE SHOWN ON A SUBSEQUENT SUBMISSION. IF SEISMIC RESTRAINT OF A COMPONENT IS NOT REQUIRED BY CODE THIS SHOULD BE STATED IN COMMENTS. IF SEISMIC RESTRAINT, IS BEING PROVIDED DUE TO OWNER/DESIGNER REQUIREMENTS THIS SHOULD ALSO BE STATED IN THE COMMENTS.				
2. PLANS SIGNED AND SEALED BY A MISSOURI PROFESSIONAL ENGINEER ALONG WITH A SEPARATE PERMIT APPLICATION NEED TO BE SUBMITTED TO THE COUNTY A MINIMUM OF TWO WEEKS PRIOR TO THE PLANNED INSTALLATION TO ALLOW FOR PLAN REVIEW AND DISTRIBUTION TO THE INSPECTOR. ADDITIONAL TIME MAY BE NEEDED IF SUCH SUBMISSIONS ARE DEFICIENT.				

INDEX OF DRAWINGS:

G001 COVER SHEET
E001 SEISMIC BLOCK, GENERAL NOTES, DETAILS & LEGEND
E101M MAINTENANCE BUILDING LIGHTING PLAN
E101 BASEMENT WEST LIGHTING PLAN
E102 BASEMENT CENTER LIGHTING PLAN
E103 BASEMENT EAST LIGHTING PLAN
E111 FIRST FLOOR WEST LIGHTING PLAN
E112 FIRST FLOOR CENTER LIGHTING PLAN
E113 FIRST FLOOR EAST LIGHTING PLAN
E121 SECOND FLOOR WEST LIGHTING PLAN
E122 SECOND FLOOR CENTER LIGHTING PLAN
E123 SECOND FLOOR EAST LIGHTING PLAN



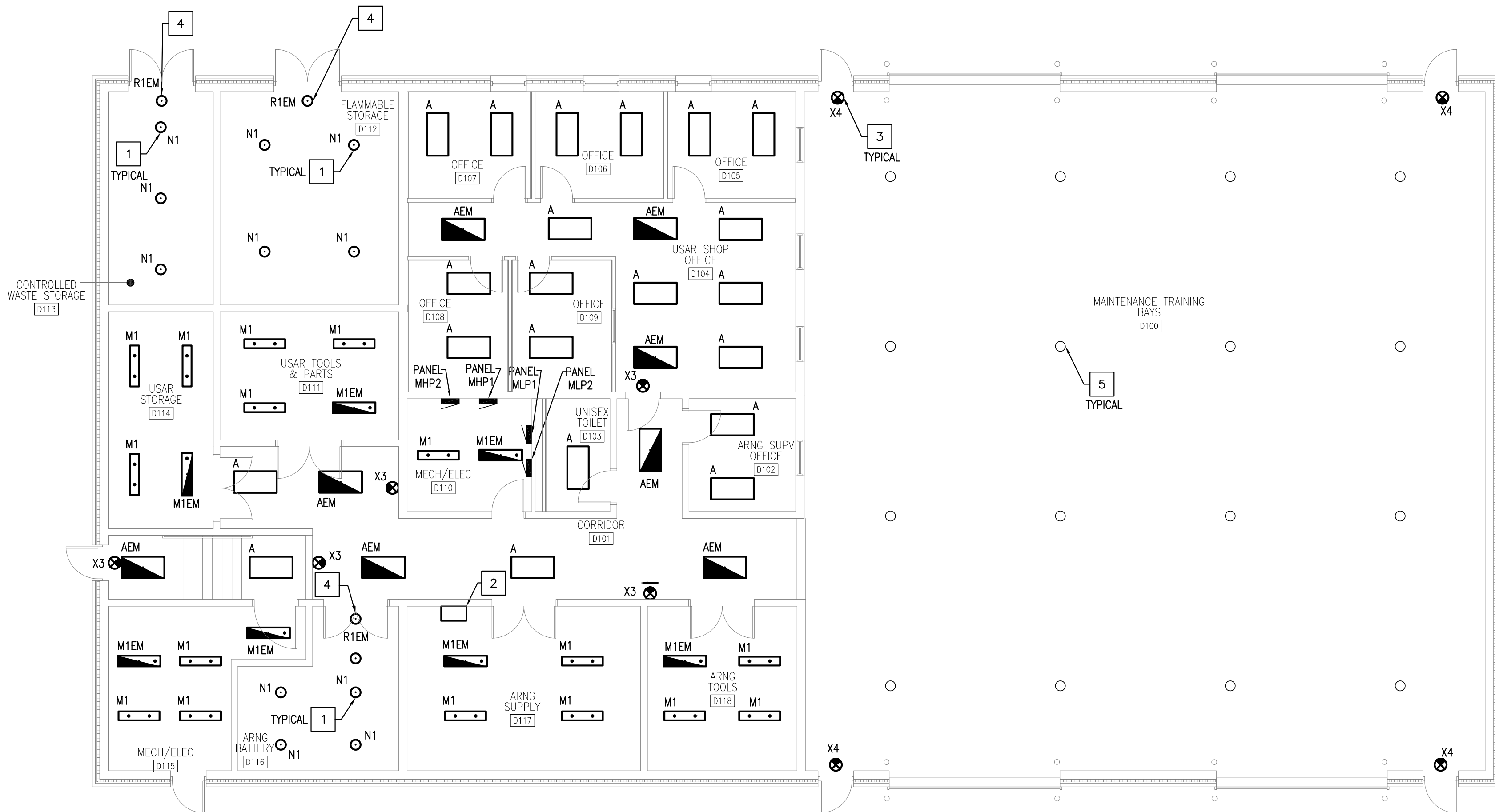
1 TYPICAL EXPLOSION PROOF "N1" AND "R1EM" FIXTURES
E101M SCALE: NO SCALE

GENERAL NOTES (THIS SHEET):

1. REPLACE EXISTING LIGHTING FIXTURES WITH LED EXCEPT GARAGE AREA LOW-BAY AND WALL MOUNTED EMERGENCY FIXTURES WHICH HAVE ALREADY BEEN UPGRADED TO LED.
2. PENDANT FIXTURES IN THE STORAGE AREAS ARE SUPPORTED FROM GALVANIZED RIGID STEEL CONDUIT WITH BALL SWIVEL JUNCTION BOXES OR FROM CHAIN HANGERS. IT IS ACCEPTABLE TO RE-USE THIS MOUNTING HARDWARE IF POSSIBLE. IF THE CONTRACTOR CHOOSES TO REPLACE THE MOUNTING HARDWARE, PROVIDE NEW TO MATCH EXISTING HARDWARE FURNISHED BY THE FIXTURE MANUFACTURER AND CUT TO THE PROPER LENGTH FOR THE MOUNTING HEIGHT TO MATCH EXISTING.
3. LIGHTING SWITCHES AND WIRING IN THIS BUILDING ARE EXISTING TO REMAIN.

KEYED NOTES (APPLIES TO THIS SHEET ONLY)

- 1 REPLACE EXISTING EXPLOSION PROOF LIGHT FIXTURE (TYPICAL FOR BATTERY, FLAMMABLE STORAGE, AND CONTROLLED WASTE STORAGE ROOMS).
- 2 EXISTING TO REMAIN BATTERY/ POWER SUPPLY FOR REMOTE MOUNTED EMERGENCY LIGHTING FIXTURES. NO WORK IS REQUIRED IN THIS AREA; THIS BATTERY LOCATION IS SHOWN FOR REFERENCE ONLY.
- 3 REPLACE EXISTING EXIT LIGHT (TYPICAL).
- 4 REPLACE EXISTING EXPLOSION PROOF EMERGENCY LIGHT FIXTURE FED FROM EXISTING TO REMAIN BATTERY LOCATED OUTSIDE OF HAZARDOUS AREA.
- 5 EXISTING TO REMAIN LED LOW BAY FIXTURE (TYPICAL FOR GARAGE AREA).



1 MAINTENANCE BUILDING LIGHTING PLAN
SCALE: 1/8" = 1'-0"
0 5 10 20 30 FT
SCALE 1/8" = 1'-0"

HAZARDOUS LOCATION NOTES

1. THE FLAMMABLE STORAGE ROOM AND THE CONTROLLED WASTE STORAGE ROOM ARE CLASS I, DIVISION 1, CLASSIFIED HAZARDOUS LOCATIONS. ALL ELECTRICAL EQUIPMENT INSTALLED IN THESE HAZARDOUS AREAS SHALL BE FM APPROVED, UL LISTED, OR ETL LISTED SUITABLE FOR USE IN CLASS I, DIVISION 1, GROUP C AND D HAZARDOUS ENVIRONMENT AND SHALL CONFORM TO THE APPLICABLE SECTIONS OF THE NEC ARTICLES 500, 501, 504, AND/OR 505. PERFORM ALL WORK IN CLASSIFIED HAZARDOUS LOCATIONS AS DEFINED BY THE NEC IN STRICT ACCORDANCE WITH THE NEC FOR THE PARTICULAR "CLASS", "DIVISION", AND "GROUP" OF HAZARDOUS LOCATIONS INVOLVED OR INDICATED ON THE DRAWINGS.
2. PER ARMY NATIONAL GUARD DG415-1 THE BATTERY ROOM SHALL COMPLY WITH NEC ARTICLE 480, STORAGE BATTERIES AND NEC ARTICLE 503 CLASS III LOCATIONS. PER UNIFIED FACILITIES CRITERIA UFC 4-171-05 SECTION 4-5.9 IT NOTES THE LIGHTING SHALL BE EXPLOSION PROOF. BASED ON REVIEW WITH THE MISSOURI ARMY NATIONAL GUARD THE HEATING, LIGHTING, AND VENTILATION SYSTEM IN THE BATTERY ROOM SHALL BE FM APPROVED, UL LISTED, OR ETL LISTED SUITABLE FOR USE IN CLASS I, DIVISION 1, GROUP C AND D HAZARDOUS ENVIRONMENT AND INSTALLED IN CONFORMANCE WITH THE APPLICABLE SECTIONS OF THE NEC ARTICLES 500, 501, 504, AND/OR 505.
3. ALL CONDUITS INSTALLED IN CLASS I, DIVISION 1 CLASSIFIED HAZARDOUS LOCATIONS SHALL BE RIGID METAL CONDUIT WITH THREADED CONNECTIONS AND FITTINGS SUITABLE FOR THE RESPECTIVE LOCATION. ALL BOXES AND FITTINGS INSTALLED IN CLASS I, DIVISION 1 LOCATIONS SHALL BE APPROVED (FM APPROVED OR UL-LISTED) SUITABLE FOR CLASS I, DIVISION 1 LOCATIONS.
4. EXPLOSION-PROOF FLEXIBLE CONDUIT SHALL BE SUITABLE FOR USE IN CLASS I, DIVISION 1, GROUP C AND D HAZARDOUS LOCATIONS, AND LIQUID-TIGHT FOR WET LOCATIONS. EXPLOSION PROOF FLEXIBLE CONDUIT SHALL BE CROUSE-HINDS ECGJH, ECLK SERIES, O-2/GEDNEY ECGJH, ECLK SERIES, OR APPLETON EXGJH OR EXLK SERIES FLEXIBLE COUPLING.
5. EXPLOSION-PROOF CONDUIT SEALS SHALL BE SUITABLE FOR USE IN CLASS I, DIVISION 1, GROUP C, D HAZARDOUS LOCATION. EXPLOSION PROOF CONDUIT SEALING FITTINGS SHALL BE CROUSE-HINDS EYS, EZS, EYSX, EYD, EYDX SERIES, APPLETON EYS, ESU, EY, EYSEF, EYD, EYDEF SERIES, O-2/GEDNEY EYA, EY, EZS SERIES, OR HUBBELL-KILLARK ENY, EYS, OR EY SERIES EXPLOSION-PROOF SEALING FITTING. EXPLOSION-PROOF CONDUIT SEALS SHALL BE INSTALLED IN CONFORMANCE WITH NEC ARTICLE 501 AND/OR 505, AND SHALL BE REQUIRED FOR, BUT NOT LIMITED TO THE FOLLOWING:
 - A. ALL CONDUITS ENTERING OR EXITING A CLASSIFIED HAZARDOUS LOCATION, AND SHALL BE THE FIRST FITTING AFTER THE CONDUIT ENTERS OR EXITS THE RESPECTIVE LOCATION.
 - B. IN EACH CONDUIT RUN ENTERING AN ENCLOSURE (LOCATED A HAZARDOUS AREA) FOR SWITCHES, CIRCUIT BREAKERS, FUSES, RELAYS, RESISTORS, LIGHT FIXTURES, MOTORS, OR OTHER APPARATUS WHICH MAY PRODUCE ARCS, SPARKS, OR HIGH TEMPERATURES, (WITHIN 18" FROM SUCH ENCLOSURES). FACTORY SEALED DEVICES DO NOT REQUIRE CONDUIT SEALS IF CONDUIT ENTERING SUCH DEVICE IS 1.5" OR SMALLER.
 - C. ALL CONDUITS EMERGING FROM GRADE IN A NON-HAZARDOUS LOCATION THAT ARE TO OR FROM A CLASSIFIED HAZARDOUS LOCATION AND SHALL BE THE FIRST FITTING AFTER THE CONDUIT EMERGES FROM GRADE.
 - D. IN ACCORDANCE WITH THE RESPECTIVE EQUIPMENT MANUFACTURER'S INSTRUCTIONS WHERE THE RESPECTIVE EQUIPMENT IS RATED AND APPROVED SUITABLE FOR USE IN THE CLASSIFIED HAZARDOUS LOCATION.
6. PER ARTICLE 501.15 (C) (6) OF THE NEC AND UL STANDARD 886, THE CROSS SECTIONAL AREA FOR CONDUCTORS INSTALLED IN A CONDUIT SEAL OFF FITTING SHALL NOT EXCEED 25 PERCENT, UNLESS THE CONDUIT SEAL OFF FITTING HAS BEEN SPECIFICALLY APPROVED FOR A HIGHER PERCENTAGE OF FILL. INSTALL EXPLOSION-PROOF CONDUIT SEALING FITTINGS IN CONFORMANCE WITH THE RESPECTIVE MANUFACTURER'S INSTRUCTIONS. CONTACT THE RESPECTIVE SEAL OFF MANUFACTURER IF ASSISTANCE IS REQUIRED FOR DIRECTION OF INSTALLING PACKING FIBER TO FORM A DAM AND POURING THE SEALING COMPOUND.

STATE OF MISSOURI
MICHAEL L. PARSON,
GOVERNOR

STATE OF MISSOURI
MICHAEL L. WEBB
REGISTERED PROFESSIONAL ENGINEER
NUMBER 826858
12/19/24

THE PROFESSIONAL WHOSE SIGNATURE AND PERSONAL SEAL APPEARS ON THIS SHEET ASSUMES RESPONSIBILITY ONLY FOR WHAT APPEARS ON THIS SHEET AND DISCLAIMS RESPONSIBILITY TO SECTION 32.01 REMOVAL. RESPONSIBILITY FOR ALL OTHER PLANS, SPECIFICATIONS, ESTIMATES, REPORTS OR OTHER DOCUMENTS OR INSTRUMENTS NOT SEALED BY THE UNDERSIGNED PROFESSIONAL RELATING TO OR INTENDED TO BE USED FOR ANY PART OR PARTS OF THE PROJECT TO WHICH THIS SHEET REFERS, REMAINS WITH THE OWNER. THE PROJECT NOT PREPARED UNDER MY SUPERVISION IS DISCLAIMED. REVIEWED BY CONTRACTOR, OWNER, OR OTHERS ARE NOT A PART OF THE PROJECT WHICH THIS SEAL INDICATES RESPONSIBILITY.

CONSULTANT

WES

WEBB
ENGINEERING
SERVICES INC.
CONSULTING ENGINEERS
1400 South 3rd, Street
St. Louis, Missouri 63104
314.588.0600 fax
314.588.0604
www.webb-engineering.com

OFFICE OF ADMINISTRATION
DIVISION OF FACILITIES
MANAGEMENT
DESIGN AND CONSTRUCTION

MISSOURI NATIONAL
GUARD
OFFICE OF ADJUTANT
GENERAL
FACILITIES DIVISION

UPGRADE LIGHTING TO
LED
JOINT ARMED FORCES
RESERVE CENTER
JEFFERSON BARRACKS
24 DAVIS STREET
ST. LOUIS, MISSOURI 63125

PROJECT # T2143-01
SITE # 6303
ASSET # 8136303051

REVISION:
DATE:
REVISION:
DATE:
REVISION:
DATE:
ISSUE DATE: 12/19/2024

CONSULT FILE: 24006
DRAWN BY: JLC
CHECKED BY: MRW
DESIGNED BY: SJW

SHEET TITLE:
MAINTENANCE
BUILDING
LIGHTING PLAN

SHEET NUMBER:

E101M

3 OF 12 SHEETS

THE PROFESSIONAL WHOSE SIGNATURE AND PERSONAL SEAL APPEARS ON THIS SHEET ASSUMES RESPONSIBILITY FOR WHAT APPEARS ON THIS SHEET AND DISCLAIMS (PURSUANT TO SECTION 327.411 RSMO) ANY RESPONSIBILITY FOR ALL OTHER PLANS, SPECIFICATIONS, ESTIMATES, REPORTS OR OTHER DOCUMENTS OR INSTRUMENTS NOT SEALED BY THE UNDERSIGNED PROFESSIONAL, RELATING TO, OR INTENDED TO BE USED FOR ANY PART OR PARTS OF THE PROJECT TO WHICH THIS SHEET REFERS, RESPONSIBILITY FOR PORTIONS OF THE PROJECT NOT PREPARED UNDER MY SUPERVISION IS DECLINED. REVISIONS BY CONTRACTORS, OWNER, OR OTHERS ARE NOT A PART OF THE PROJECT WHICH THIS SEAL INDICATES RESPONSIBILITY FOR.

WES

1400 South 3rd. Street
St.Louis, Missouri 63104
314.588.0600 fax
314.588.0604
www.webb-engineering.com

**MISSOURI NATIONAL
GUARD
OFFICE OF ADJUTANT
GENERAL
FACILITIES DIVISION**

PROJECT # T2143-01
SITE # 6303
ASSET # 813630305

REVISION: _____
DATE: _____
REVISION: _____
DATE: _____
REVISION: _____
DATE: _____
ISSUE DATE: 12/19/2024

CONSULT FILE: 34006

CONSULT FILE: 24006
DRAWN BY: JLC
CHECKED BY: MRW
DESIGNED BY: SIW

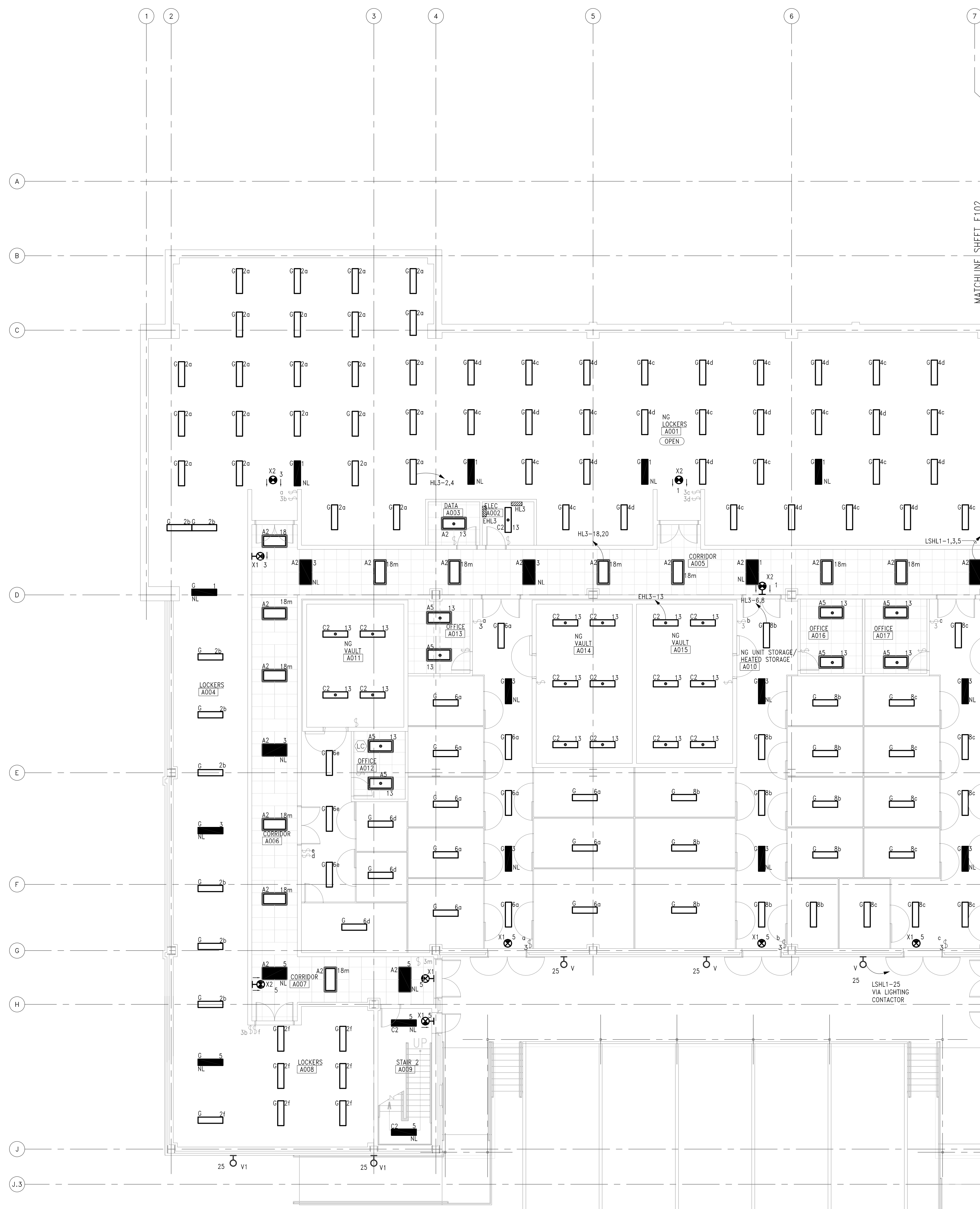
SHEET TITLE:

BASEMENT WEST LIGHTING PLAN

SHEET NUMBER:

E101

4 OF 12 SHEETS

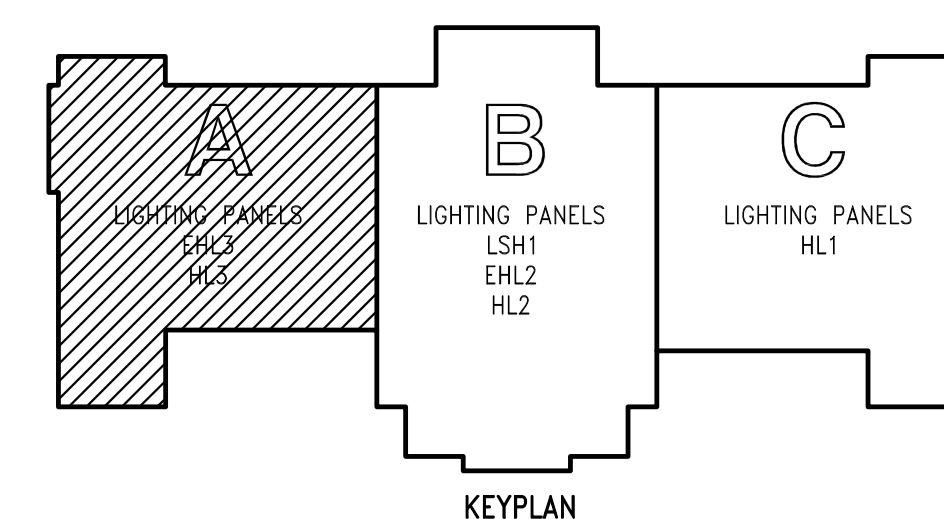


1 BASEMENT WEST LIGHTING PLAN

SCALE: 1/8" = 1'-0"

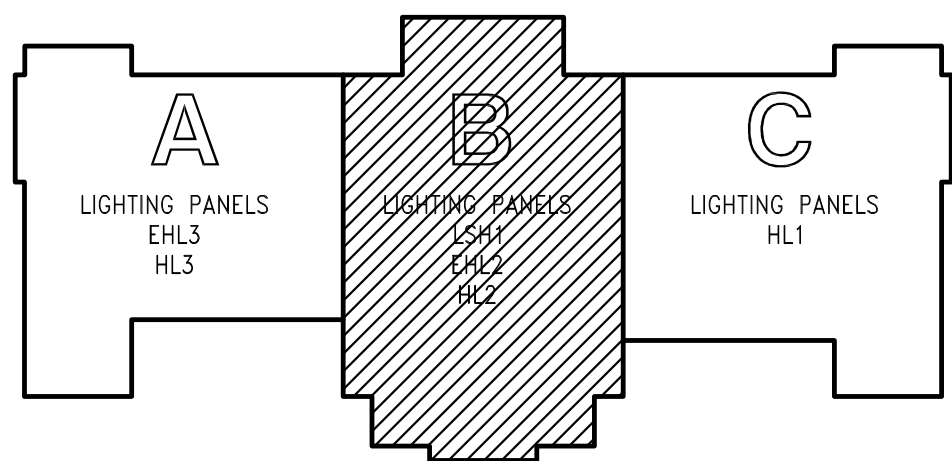


SCALE 1/8" = 1'-0"

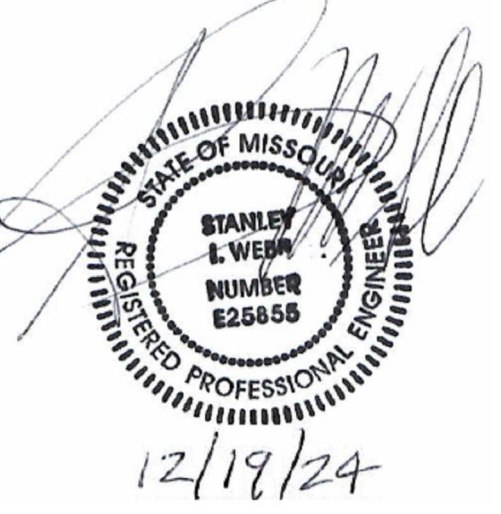




- KEYED NOTES** (THIS SHEET ONLY)
- 1 REPLACE EXISTING 3-WAY DIMMER SWITCHES WITH NEW PER SHEET E001 NOTES, DETAILS AND SPECIFICATIONS.
 - 2 REFER TO DETAIL 2, DRAWING E050 FOR MOUNTING DETAIL FOR FIXTURES IN CAGES, TYPICAL
 - 3 LIGHT FIXTURES TO BE CONTROLLED BY SWITCH LABELED 'c' ON SHEET E104.
 - 4 LIGHT FIXTURE IS FED FROM PANEL HL3.
 - 5 LIGHT FIXTURES ARE FED FROM PANEL HL1.
 - 6 PROVIDE LITHONIA DM-2-32 OR EQUAL. LOCATE SWITCH ADJACENT TO PIT ACCESS POINT.
 - 7 REFER TO SHEET E104 FOR LIGHT FIXTURES CONTROLLED BY THESE SWITCHES.
 - 8 REFER TO DRAWING E103 FOR CORRESPONDING 3-WAY SWITCH.
 - 9 TYPE 'K1' ARE FURNISHED WITH SHOWER ASSEMBLY KIT.



STATE OF MISSOURI
MICHAEL L. PARSON,
GOVERNOR



THE PROFESSIONAL WHOSE SIGNATURE AND PERSONAL SEAL APPEARS ON THIS SHEET ASSUMES RESPONSIBILITY ONLY FOR WHAT APPEARS ON THIS SHEET AND DISCLAIMS RESPONSIBILITY FOR ALL OTHER PLANS, SPECIFICATIONS, ESTIMATES, REPORTS AND OTHER DOCUMENTS OR INSTRUMENTS NOT SEALED BY THE UNDERSIGNED PROFESSIONAL RELATING TO OR INTENDED TO BE USED FOR ANY PART OR PARTS OF THE PROJECT TO WHICH THIS SHEET REFERS. RESPONSIBILITY FOR PORTIONS OF THE PROJECT NOT PREPARED UNDER MY SUPERVISION IS DISCLAIMED. REVISIONS BY CONTRACTOR, OWNER, OR OTHERS ARE NOT A PART OF THE PROJECT WHICH THIS SEAL INDICATES RESPONSIBILITY.

CONSULTANT
WES
WEBB
ENGINEERING
SERVICES INC.
CONSULTING ENGINEERS
1400 South 3rd Street
St. Louis, Missouri 63104
314.588.0600 fax
314.588.0604
www.webb-engineering.com

OFFICE OF ADMINISTRATION
DIVISION OF FACILITIES
MANAGEMENT
DESIGN AND CONSTRUCTION

MISSOURI NATIONAL
GUARD
OFFICE OF ADJUTANT
GENERAL
FACILITIES DIVISION

UPGRADE LIGHTING TO
LED
JOINT ARMED FORCES
RESERVE CENTER
JEFFERSON BARRACKS
24 DAVIS STREET
ST. LOUIS, MISSOURI 63125

PROJECT # T2143-01
SITE # 6303
ASSET # 8136303051

REVISION: _____
DATE: _____
REVISION: _____
DATE: _____
REVISION: _____
DATE: _____
ISSUE DATE: 12/19/2024

CONSULT FILE: 24006
DRAWN BY: JLC
CHECKED BY: MRW
DESIGNED BY: SIW

SHEET TITLE:
**BASEMENT
CENTER LIGHTING
PLAN**

SHEET NUMBER:

E102

5 OF 12 SHEETS

THE PROFESSIONAL WHOSE SIGNATURE AND PERSONAL SEAL APPEARS ON THIS SHEET ASSUMES RESPONSIBILITY FOR WHAT APPEARS ON THIS SHEET AND DISCLAIMS (PURSUANT TO SECTION 327.411 RSMO) ANY RESPONSIBILITY FOR ALL OTHER PLANS, SPECIFICATIONS, ESTIMATES, REPORTS OR OTHER DOCUMENTS OR INSTRUMENTS NOT SEALED BY THE UNDERSIGNED PROFESSIONAL, RELATING TO, OR INTENDED TO BE USED FOR ANY PART OR PARTS OF THE PROJECT TO WHICH THIS SHEET REFERS, RESPONSIBILITY FOR PORTIONS OF THE PROJECT NOT PREPARED UNDER MY SUPERVISION IS DECLINED. REVISIONS BY CONTRACTORS, OWNER, OR OTHERS ARE NOT A PART OF THE PROJECT WHICH THIS SEAL INDICATES RESPONSIBILITY FOR.

WES

1400 South 3rd. Street
St. Louis, Missouri 63104
314.588.0600 fax
314.588.0604
www.webb-engineering.com

**MISSOURI NATIONAL
GUARD
OFFICE OF ADJUTANT
GENERAL
FACILITIES DIVISION**

PROJECT # T2143-01
SITE # 6303
ASSET # 8136303051

REVISION: _____
DATE: _____
REVISION: _____
DATE: _____
REVISION: _____
DATE: _____
ISSUE DATE: 12/19/2024

CONSULT FILE: 24006
DRAWN BY: JLC
CHECKED BY: MRW
DESIGNED BY: SIW

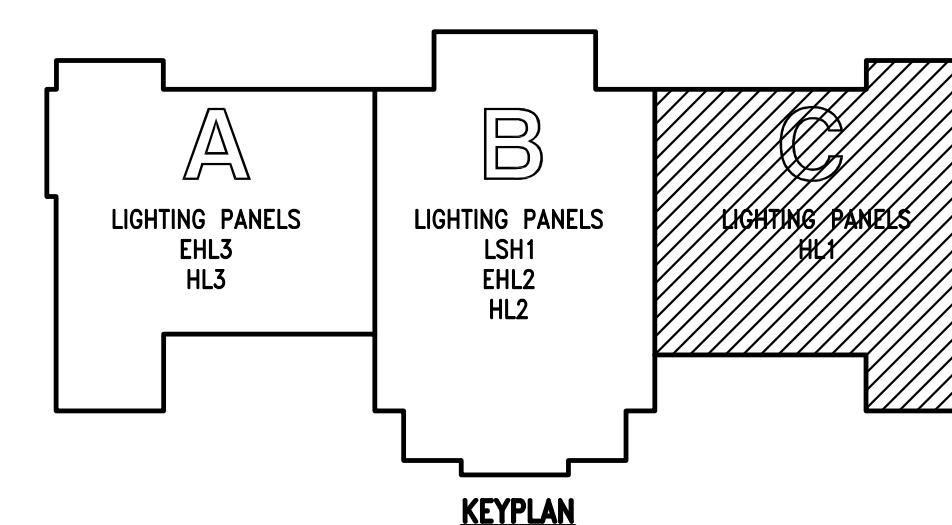
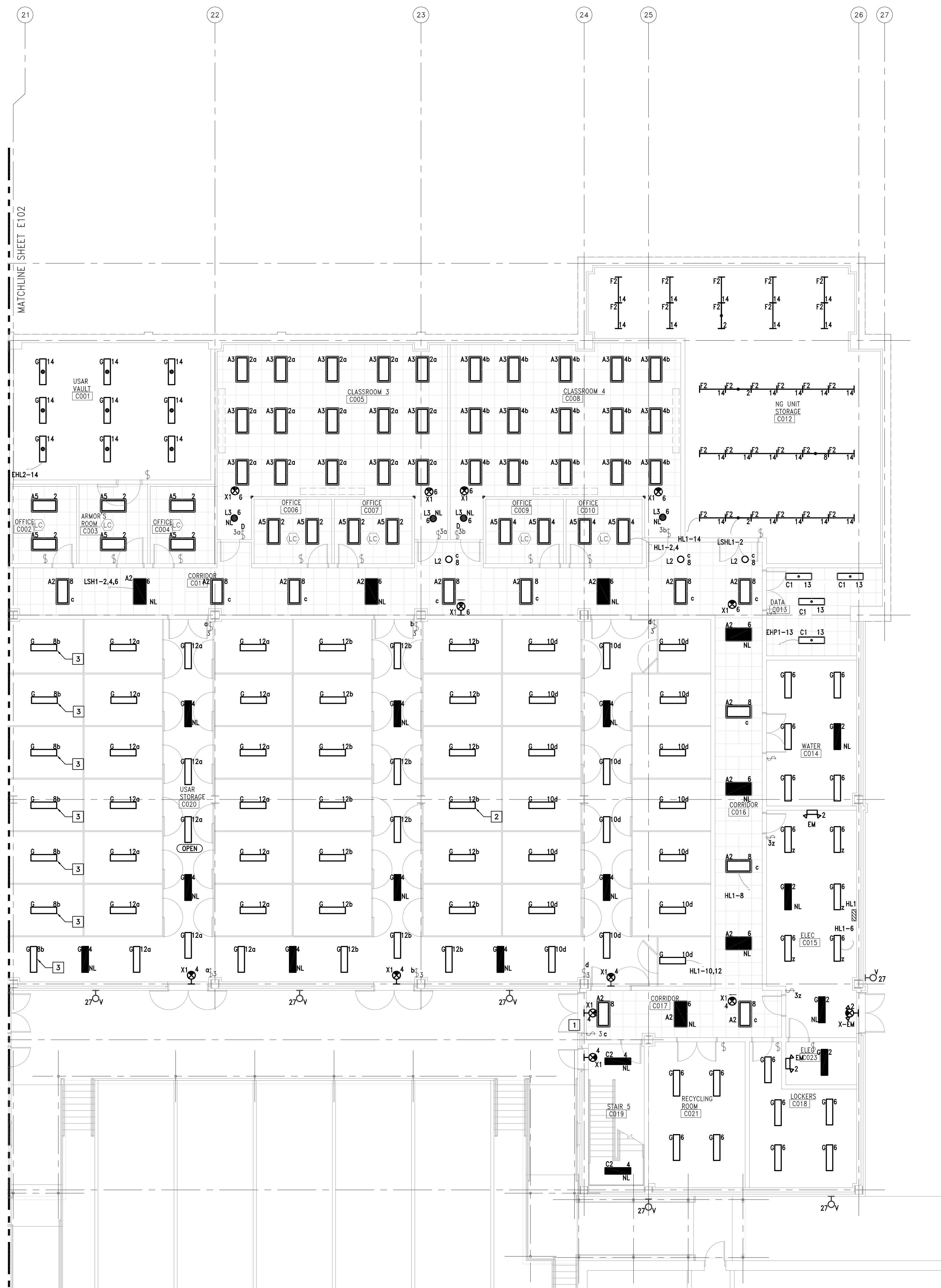
SHEET TITLE:
BASEMENT EAST
LIGHTING PLAN

E103

6 OF 12 SHEETS

(THIS SHEET ONLY)

- 1 REFER TO DRAWING E102 FOR CORRESPONDING 3-WAY SWITCH.
- 2 REFER TO DETAIL 2, SHEET E001 FOR MOUNTING DETAIL FOR FIXTURES IN CAGES. TYPICAL
- 3 LIGHT FIXTURE TO BE CONTROLLED BY SWITCH LABELED 'b' ON SHEET E102.

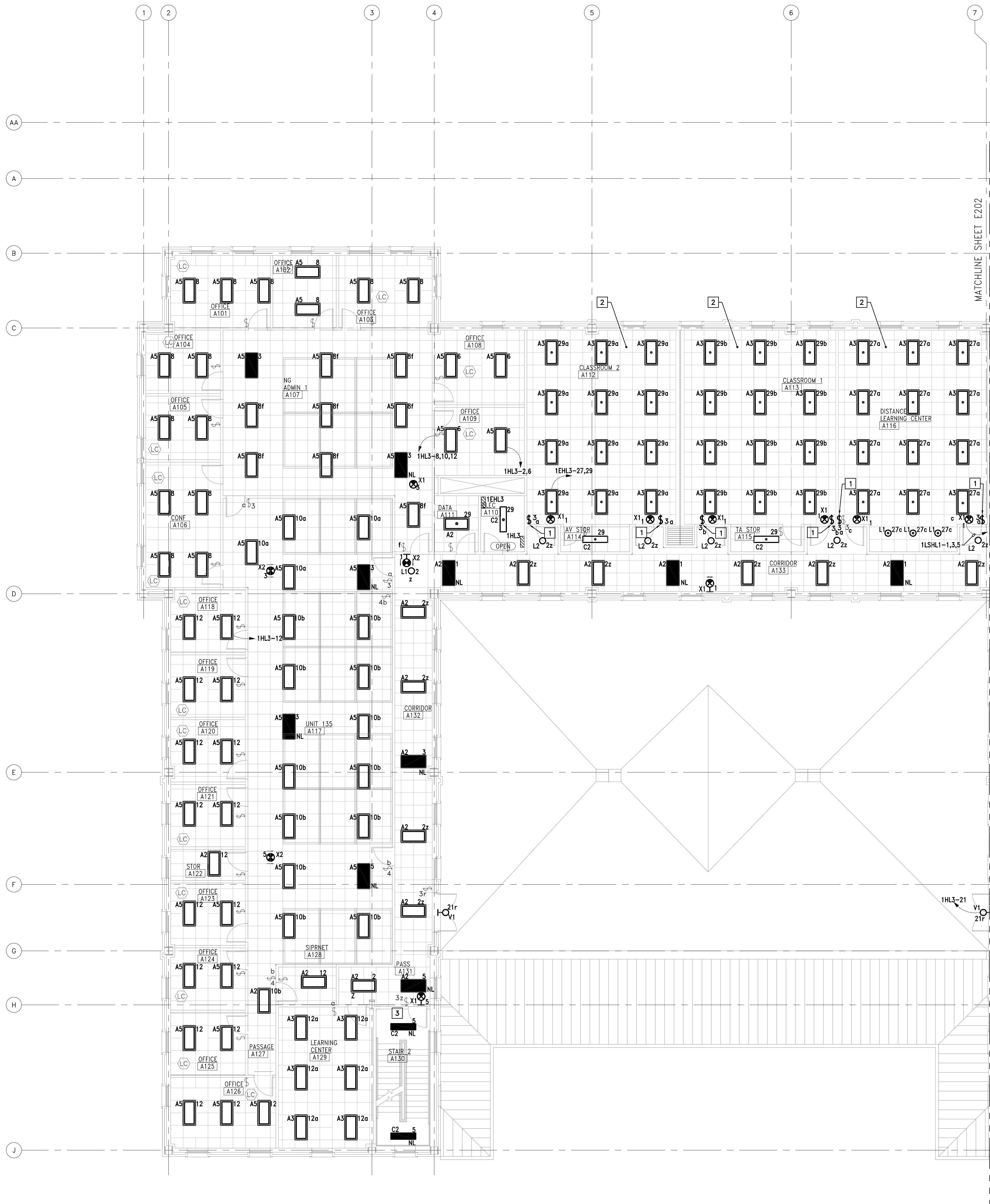


1 BASEMENT EAST LIGHTING PLAN

SCALE: $1/8" = 1'-0"$



SCALE 1/8" = 1'-0"



KEYED NOTES

(THIS SHEET ONLY)

- 1 REPLACE EXISTING 3-WAY DIMMER SWITCHES WITH NEW PER SHEET E001 NOTES, DETAILS AND SPECIFICATIONS.
- 2 LIGHT FIXTURES IN THIS ROOM ARE FED FROM AN EMERGENCY PANEL.
- 3 REFER TO DRAWING E112 FOR CORRESPONDING 3-WAY SWITCH LOCATION.

STATE OF MISSOURI
MICHAEL L. PARSON,
GOVERNOR



THE PROFESSIONAL WHOSE SIGNATURE AND PERSONAL SEAL APPEARS ON THIS SHEET ASSUMES RESPONSIBILITY ONLY FOR WHAT APPEARS ON THIS SHEET AND DISCLAIMS RESPONSIBILITY FOR ALL OTHER PLANS, SPECIFICATIONS, ESTIMATES, REPORTS OR OTHER DOCUMENTS OR INSTRUMENTS NOT SEALED BY THE UNDERSIGNED PROFESSIONAL RELATING TO OR INTENDED TO BE USED FOR ANY PART OR PARTS OF THE PROJECT TO WHICH THIS SHEET REFERS. RESPONSIBILITY FOR PORTIONS OF THE PROJECT NOT PREPARED UNDER MY SUPERVISION IS DISCLAIMED. REVISIONS BY CONTRACTING OWNER OR OTHERS ARE NOT A PART OF THE PROJECT WHICH THIS SEAL INDICATES RESPONSIBILITY.

CONSULTANT

WES

WEBB
ENGINEERING
SERVICES INC.
CONSULTING ENGINEERS

1400 South 3rd Street
St. Louis, Missouri 63104
314.588.0600 fax
314.588.0604
www.webb-engineering.com

OFFICE OF ADMINISTRATION
DIVISION OF FACILITIES
MANAGEMENT
DESIGN AND CONSTRUCTION

MISSOURI NATIONAL
GUARD
OFFICE OF ADJUTANT
GENERAL
FACILITIES DIVISION

UPGRADE LIGHTING TO
LED
JOINT ARMED FORCES
RESERVE CENTER
JEFFERSON BARRACKS
24 DAVIS STREET
ST. LOUIS, MISSOURI 63125

PROJECT # T2143-01
SITE # 6303
ASSET # 8136303051

REVISION: _____
DATE: _____
REVISION: _____
DATE: _____
REVISION: _____
DATE: _____
ISSUE DATE: 12/19/2024

CONSULT FILE: 24006
DRAWN BY: JLC
CHECKED BY: MRW
DESIGNED BY: SIW

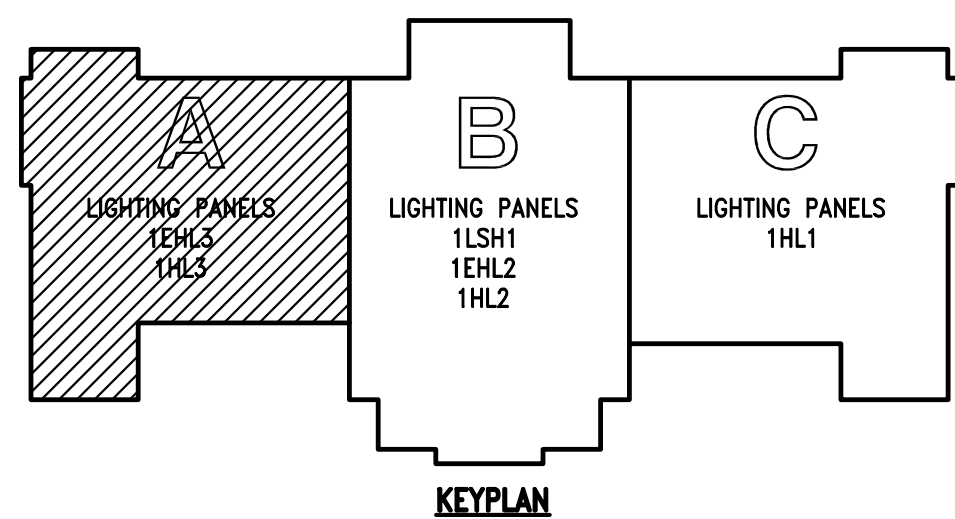
SHEET TITLE:

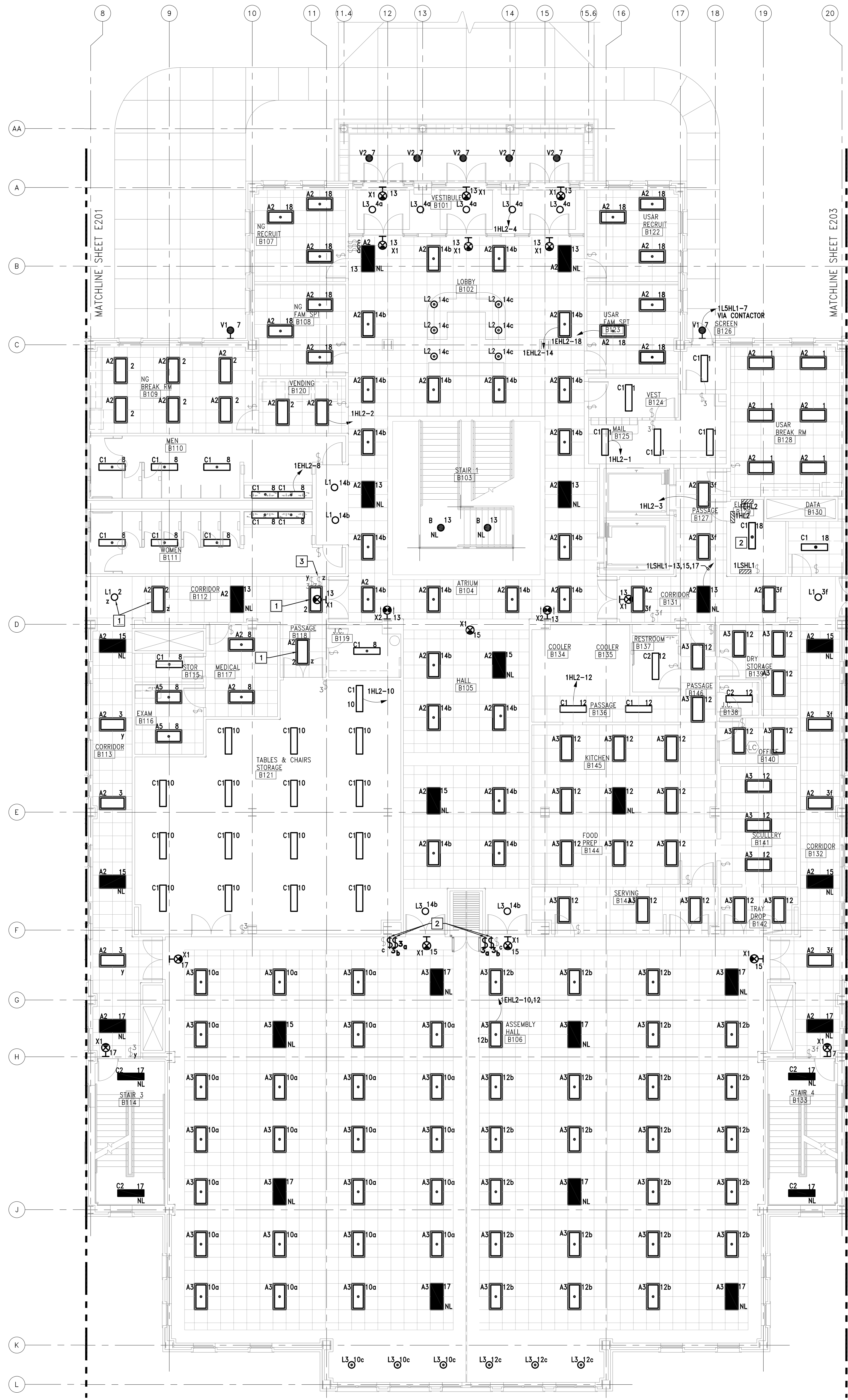
FIRST FLOOR WEST
LIGHTING PLAN

SHEET NUMBER:

E111

7 OF 12 SHEETS





- KEYED NOTES

(THIS SHEET ONLY)

1

LIGHTS ARE FED FROM PANEL 1HL3. REFER TO SHEET E111.

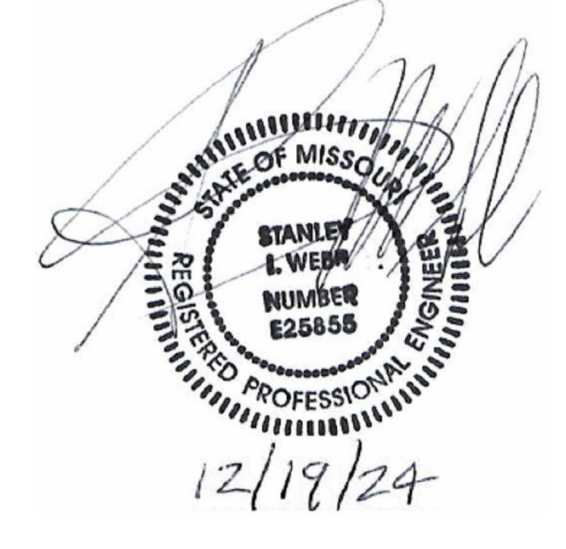
2

REPLACE EXISTING 3-WAY DIMMER SWITCHES WITH NEW PER SHEET E001 NOTES AND DETAILS AND SPECIFICATIONS.

3

REFER TO SHEET E113 FOR COINCIDING THREE WAY SWITCH, AND FIXTURES CONTROLLED.

STATE OF MISSOURI
MICHAEL L. PARSON,
GOVERNOR



THE PROFESSIONAL WHOSE SIGNATURE AND PERSONAL SEAL APPEARS ON THIS SHEET ASSUMES RESPONSIBILITY ONLY FOR WHAT APPEARS ON THIS SHEET AND DISCLAIMS RESPONSIBILITY FOR ALL OTHER PLANS, SPECIFICATIONS, ESTIMATES, REPORTS OR OTHER DOCUMENTS OR INSTRUMENTS NOT SEALED BY THE UNDERSIGNED PROFESSIONAL RELATING TO OR INTENDED TO BE USED FOR ANY PART OR PARTS OF THE PROJECT TO WHICH THIS SHEET REFERS. RESPONSIBILITY FOR PORTIONS OF THE PROJECT NOT PREPARED UNDER MY SUPERVISION IS DISCLAIMED. REVISIONS BY CONTRACTOR, OWNER, OR OTHERS ARE NOT A PART OF THE PROJECT WHICH THIS SEAL INDICATES RESPONSIBILITY.

CONSULTANT
WES
WEBB
ENGINEERING
SERVICES INC.
CONSULTING ENGINEERS
1400 South 3rd. Street
St. Louis, Missouri 63104
314.588.0600 fax
314.588.0604
www.webb-engineering.com

OFFICE OF ADMINISTRATION
DIVISION OF FACILITIES
MANAGEMENT
DESIGN AND CONSTRUCTION

MISSOURI NATIONAL
GUARD
OFFICE OF ADJUTANT
GENERAL
FACILITIES DIVISION

UPGRADE LIGHTING TO
LED
JOINT ARMED FORCES
RESERVE CENTER
JEFFERSON BARRACKS
24 DAVIS STREET
ST. LOUIS, MISSOURI 63125

PROJECT # T2143-01
SITE # 6303
ASSET # 8136303051

REVISION:
DATE:
REVISION:
DATE:
REVISION:
DATE:
ISSUE DATE: 12/19/2024

CONSULT FILE: 24006
DRAWN BY: JLC
CHECKED BY: MRW
DESIGNED BY: SIW

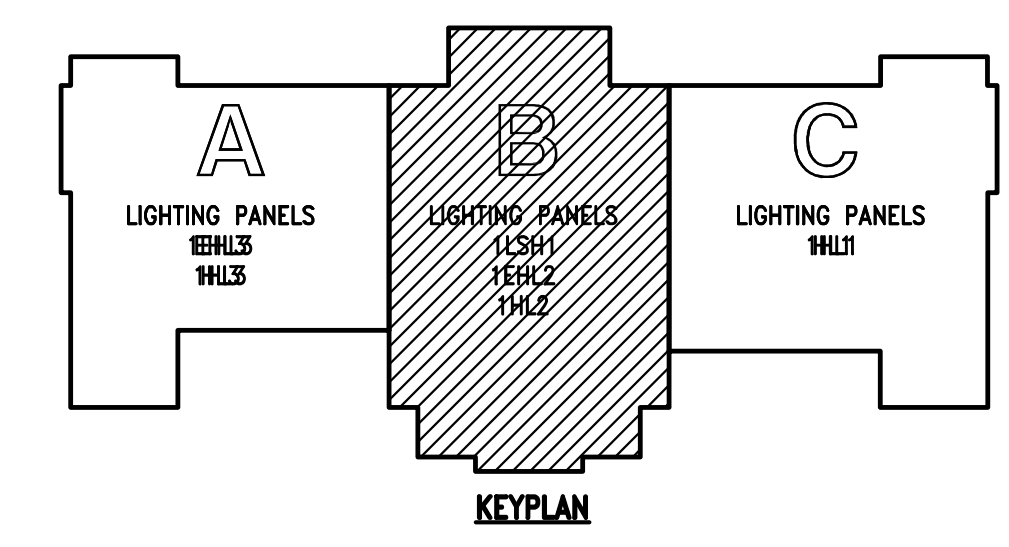
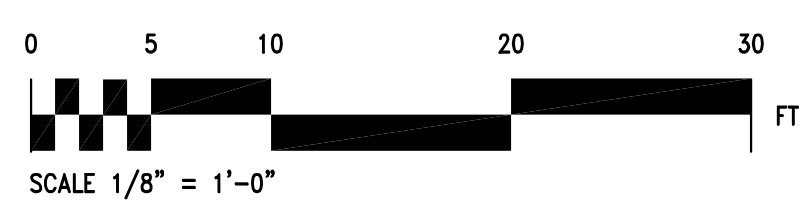
SHEET TITLE:
FIRST FLOOR
CENTER LIGHTING
PLAN

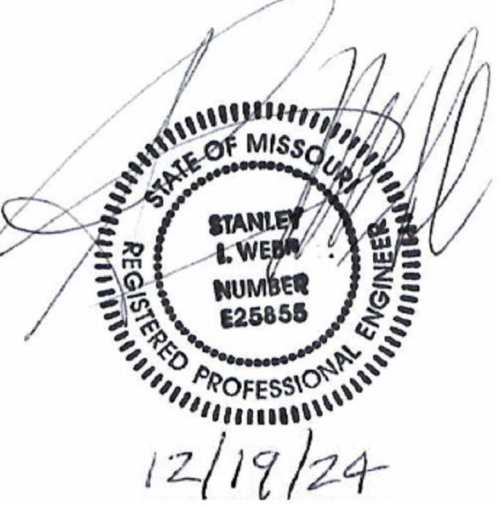
SHEET NUMBER:

E112

8 OF 12 SHEETS

 1 FIRST FLOOR CENTER LIGHTING PLAN
SCALE: 1/8" = 1'-0"





THE PROFESSIONAL WHOSE SIGNATURE AND PERSONAL SEAL APPEARS ON THIS SHEET ASSUMES RESPONSIBILITY ONLY FOR WHAT APPEARS ON THIS SHEET AND DISCLAIMS (PURSUANT TO SECTION 327.01 RSMO) ANY RESPONSIBILITY FOR ALL OTHER PLANS, SPECIFICATIONS, ESTIMATES, REPORTS OR OTHER DOCUMENTS OR INSTRUMENTS NOT SEALED BY THE UNDERSIGNED. PROFESSIONAL RELATING TO OR INTENDED TO BE USED FOR ANY PART OR PARTS OF THE PROJECT TO WHICH THIS SHEET REFERS. RESPONSIBILITY FOR PORTIONS OF THE PROJECT NOT PREPARED UNDER MY SUPERVISION IS DISCLAIMED. REVISED BY CONTRACTORS, OWNER, OR OTHERS ARE NOT A PART OF THE PROJECT WHICH THIS SEAL INDICATES RESPONSIBILITY.

CONSULTANT



WEBB
ENGINEERING
SERVICES INC.
CONSULTING ENGINEERS
1400 South 3rd Street
St. Louis, Missouri 63104
314.588.0600 fax
314.588.0604
www.webb-engineering.com

OFFICE OF ADMINISTRATION
DIVISION OF FACILITIES
MANAGEMENT
DESIGN AND CONSTRUCTION

MISSOURI NATIONAL
GUARD
OFFICE OF ADJUTANT
GENERAL
FACILITIES DIVISION

UPGRADE LIGHTING TO
LED
JOINT ARMED FORCES
RESERVE CENTER
JEFFERSON BARRACKS
24 DAVIS STREET
ST. LOUIS, MISSOURI 63125

PROJECT # T2143-01
SITE # 6303
ASSET # 8136303051

REVISION: _____
DATE: _____
REVISION: _____
DATE: _____
REVISION: _____
DATE: _____
ISSUE DATE: 12/19/2024

CONSULT FILE: 24006
DRAWN BY: JLC
CHECKED BY: MRW
DESIGNED BY: SJW

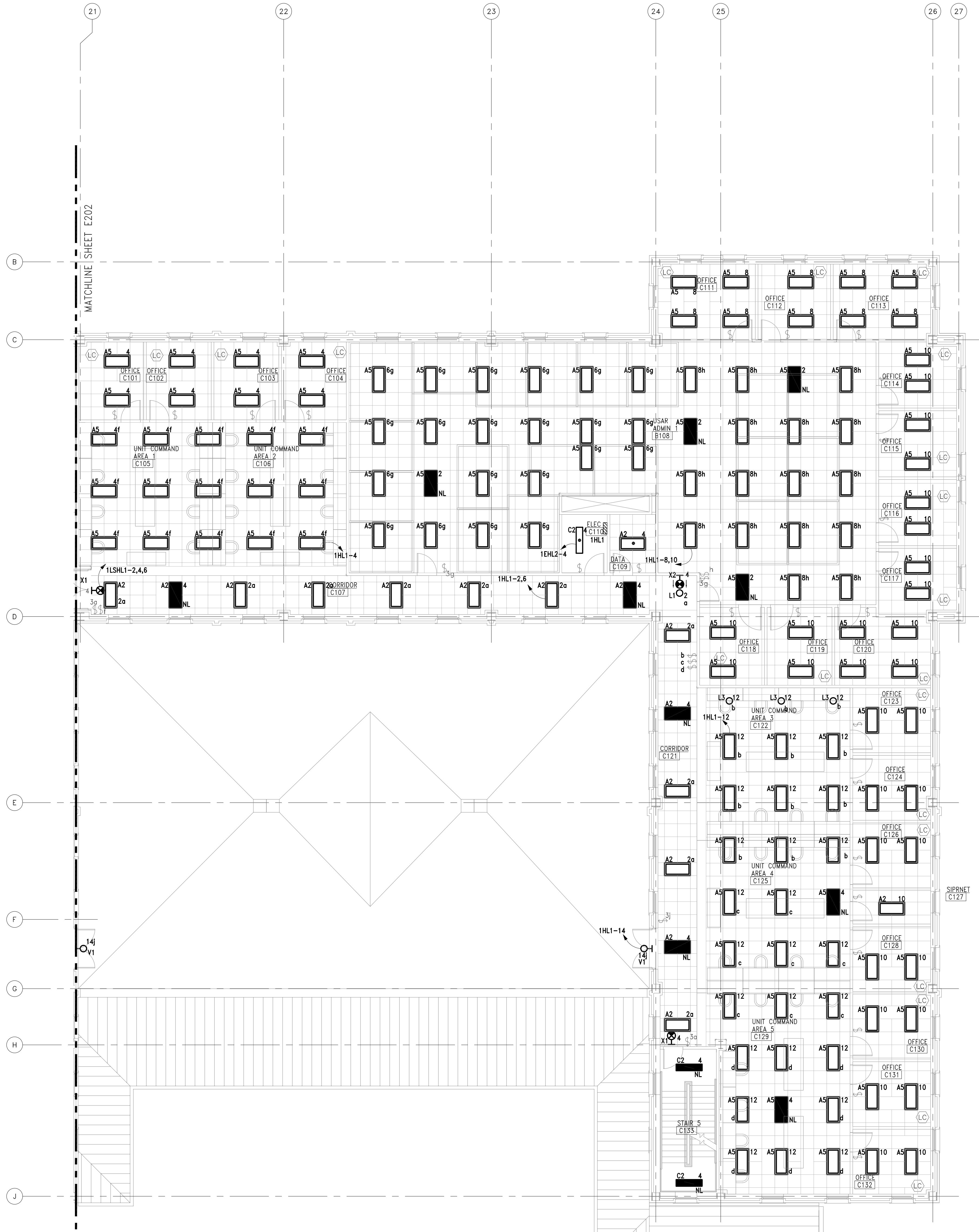
SHEET TITLE:

FIRST FLOOR EAST
LIGHTING PLAN

SHEET NUMBER:

E113

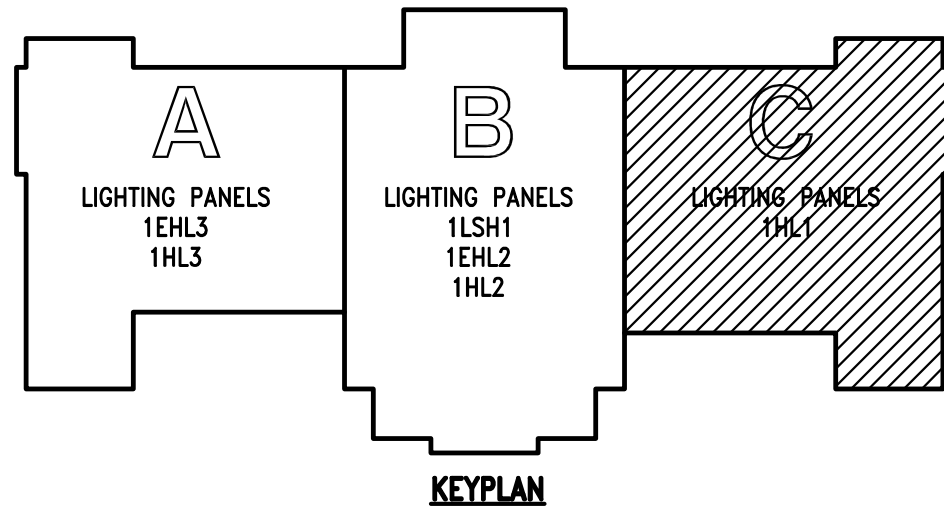
9 OF 12 SHEETS



1

FIRST FLOOR EAST LIGHTING PLAN

SCALE: 1/8" = 1'-0"

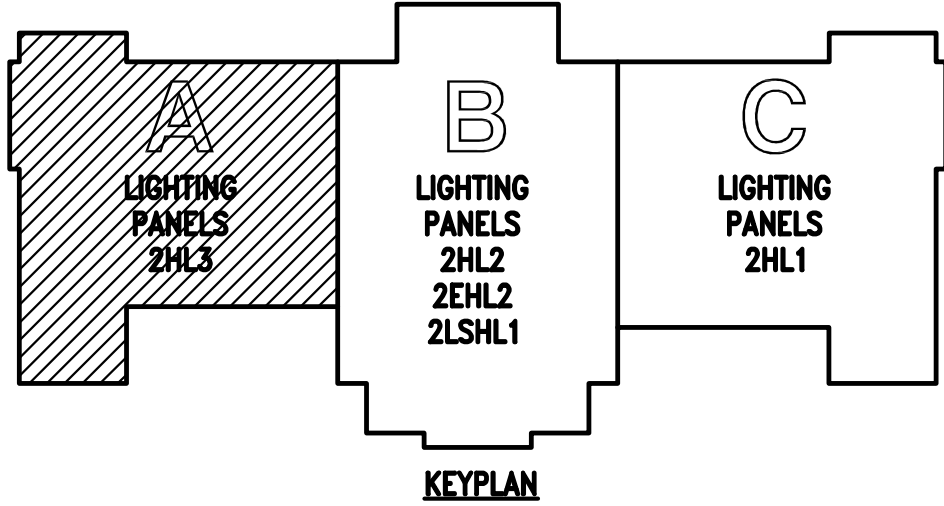




- KEYED NOTES
- (THIS SHEET ONLY)
- 1

OFFICE AREA LIGHTING IS ON EMERGENCY POWER CIRCUIT 2EHL2-5.
- 2

REFER TO DRAWING E122 FOR CORRESPONDING 3-WAY SWITCH.



STATE OF MISSOURI
MICHAEL L. PARSON,
GOVERNOR



THE PROFESSIONAL WHOSE SIGNATURE AND PERSONAL SEAL APPEARS ON THIS SHEET ASSUMES RESPONSIBILITY ONLY FOR WHAT APPEARS ON THIS SHEET AND DISCLAIMS RESPONSIBILITY FOR ALL OTHER PLANS, SPECIFICATIONS, ESTIMATES, REPORTS OR OTHER DOCUMENTS OR INSTRUMENTS NOT SEALED BY THE UNDERSIGNED PROFESSIONAL RELATING TO OR INTENDED TO BE USED FOR ANY PART OR PARTS OF THE PROJECT TO WHICH THIS SHEET REFERS. RESPONSIBILITY FOR PORTIONS OF THE PROJECT NOT PREPARED UNDER MY SUPERVISION IS DISCLAIMED. REVISIONS BY CONTRACTOR, OWNER, OR OTHERS ARE NOT A PART OF THE PROJECT WHICH THIS SEAL INDICATES RESPONSIBILITY.

CONSULTANT

WES

WEBB
ENGINEERING
SERVICES INC.
CONSULTING ENGINEERS

1400 South 3rd. Street
St. Louis, Missouri 63104
314.588.0600 fax
314.588.0604
www.webb-engineering.com

OFFICE OF ADMINISTRATION
DIVISION OF FACILITIES
MANAGEMENT
DESIGN AND CONSTRUCTION

MISSOURI NATIONAL
GUARD
OFFICE OF ADJUTANT
GENERAL
FACILITIES DIVISION

UPGRADE LIGHTING TO
LED
JOINT ARMED FORCES
RESERVE CENTER
JEFFERSON BARRACKS
24 DAVIS STREET
ST. LOUIS, MISSOURI 63125

PROJECT # T2143-01
SITE # 6303
ASSET # 8136303051

REVISION:
DATE: _____
REVISION: _____
DATE: _____
REVISION: _____
DATE: _____
ISSUE DATE: 12/19/2024

CONSULT FILE: 24006
DRAWN BY: JLC
CHECKED BY: MRW
DESIGNED BY: SIW

SHEET TITLE:
SECOND FLOOR
WEST LIGHTING
PLAN

SHEET NUMBER:
E121

CONSULTANT

1400 South 3rd. Street
St. Louis, Missouri 63104
314.588.0600 fax
314.588.0604
www.webb-engineering.com

**MISSOURI NATIONAL
GUARD
OFFICE OF ADJUTANT
GENERAL
FACILITIES DIVISION**

PROJECT #	T2143-01
SITE #	6303
ASSET #	813630305

REVISION: _____
DATE: _____
REVISION: _____
DATE: _____
REVISION: _____
DATE: _____
ISSUE DATE: 12/19/2024

CONSULT FILE: 24006
DRAWN BY: JLC
CHECKED BY: MRW
DESIGNED BY: SIW

SECOND FLOOR
CENTER LIGHTING
PLAN

E122

11 OF 12 SHEETS

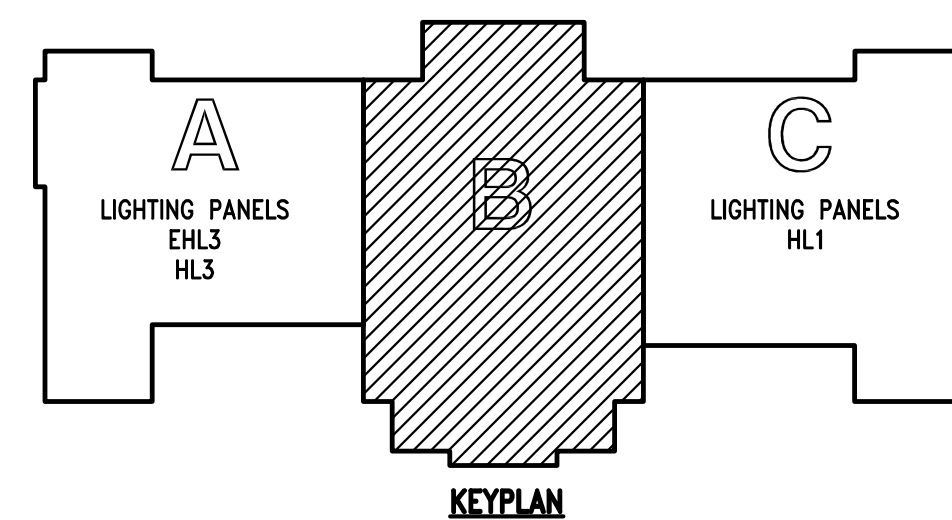


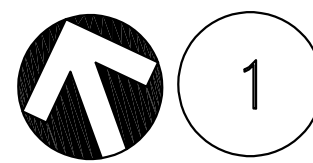
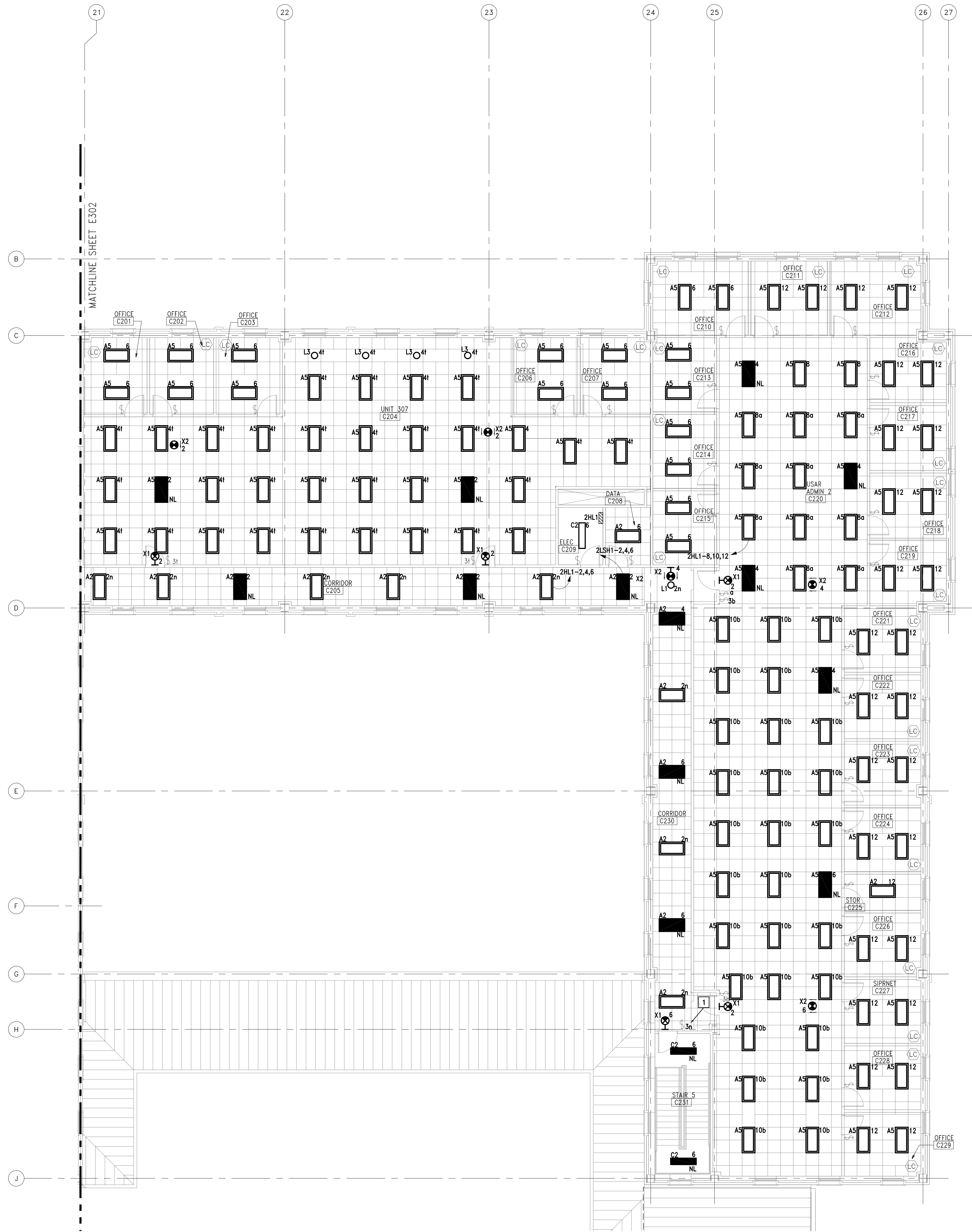
SECOND FLOOR CENTER LIGHTING PLAN
SCALE: 1/8" = 1'-0"



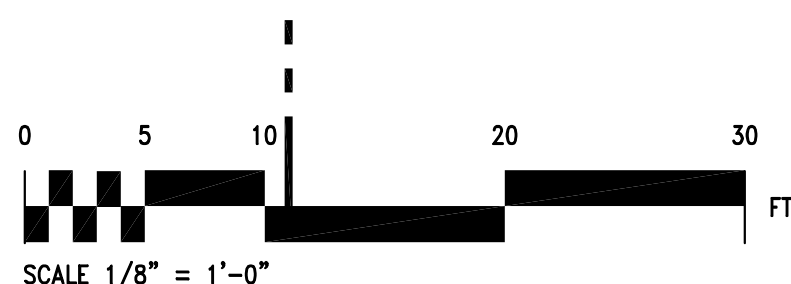
(THIS SHEET ONLY)

- | | |
|---|-----------------------------------------------------------------------------------------------------|
| 1 | LIGHT FIXTURE CONNECTED TO PANEL 2EHL2. REFER TO SHEET E121 FOR CONTINUATION OF CIRCUIT. |
| 2 | FIELD VERIFY EXACT FIXTURE LENGTHS WITH COVE DIMENSIONS. |
| 3 | REFER TO DRAWING E121 FOR CORRESPONDING 3-WAY SWITCH. |
| 4 | REFER TO DRAWING E123 FOR CORRESPONDING 3-WAY SWITCH. |
| 5 | REPLACE EXISTING 3-WAY DIMMER SWITCHES WITH NEW PER SHEET E001 NOTES, DETAILS AND SPECIFICATIONS. |
| 6 | THE LIGHTING IN CLASSROOM 5 AND 6, LOBBY B2003, AND TOILETS B209 AND B210 IS ON EMERGENCY CIRCUITS. |





1 SECOND FLOOR EAST LIGHTING PLAN
SCALE: 1/8" = 1'-0"

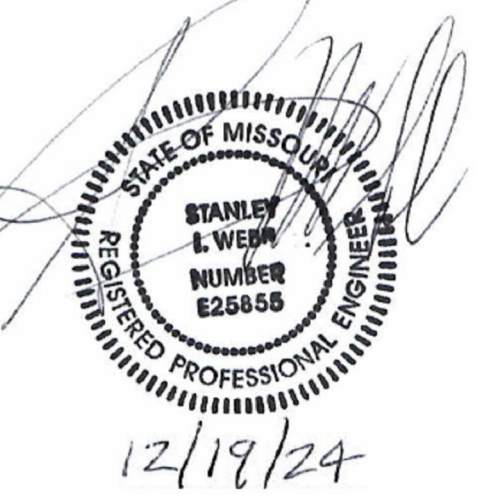


KEYED NOTES

(THIS SHEET ONLY)

- 1 REFER TO DRAWING E122 FOR CORRESPONDING 3-WAY SWITCH.

STATE OF MISSOURI
MICHAEL L. PARSON,
GOVERNOR



THE PROFESSIONAL WHOSE SIGNATURE AND PERSONAL SEAL APPEARS ON THIS SHEET ASSUMES RESPONSIBILITY ONLY FOR WHAT APPEARS ON THIS SHEET AND DISCLAIMS RESPONSIBILITY FOR ALL OTHER PLANS, SPECIFICATIONS, ESTIMATES, REPORTS OR OTHER DOCUMENTS OR INSTRUMENTS NOT SEALED BY THE UNDERSIGNED PROFESSIONAL RELATING TO OR INTENDED TO BE USED FOR ANY PART OR PARTS OF THE PROJECT TO WHICH THIS SHEET REFERS. RESPONSIBILITY FOR PORTIONS OF THE PROJECT NOT PREPARED UNDER MY SUPERVISION IS DISCLAIMED. REVISIONS BY CONTRACTOR, OWNER, OR OTHERS ARE NOT A PART OF THE PROJECT WHICH THIS SEAL INDICATES RESPONSIBILITY.

CONSULTANT

WES

WEBB
ENGINEERING
SERVICES INC.
CONSULTING ENGINEERS

1400 South 3rd Street
St. Louis, Missouri 63104
314.588.0600 fax
314.588.0604
www.webb-engineering.com

OFFICE OF ADMINISTRATION
DIVISION OF FACILITIES
MANAGEMENT
DESIGN AND CONSTRUCTION

MISSOURI NATIONAL
GUARD
OFFICE OF ADJUTANT
GENERAL
FACILITIES DIVISION

UPGRADE LIGHTING TO
LED
JOINT ARMED FORCES
RESERVE CENTER
JEFFERSON BARRACKS
24 DAVIS STREET
ST. LOUIS, MISSOURI 63125

PROJECT # T2143-01
SITE # 6303
ASSET # 8136303051

REVISION:
DATE:
REVISION:
DATE:
REVISION:
DATE:
ISSUE DATE: 12/19/2024

CONSULT FILE: 24006
DRAWN BY: JLC
CHECKED BY: MRW
DESIGNED BY: SIW

SHEET TITLE:
SECOND FLOOR
EAST LIGHTING
PLAN

SHEET NUMBER:

E123

12 OF 12 SHEETS

