

# AUDITORIUM RENOVATIONS IKE SKELTON TRAINING SITE JEFFERSON CITY, COLE COUNTY, MO

---



CONSTRUCTION &  
FACILITIES MANAGEMENT  
OFFICE  
6819 N BOUNDARY RD  
Jefferson City, Mo. 65101  
573-638-9534

## SHEET INDEX

G001: COVER SHEET  
A100: KEY FLOOR PLAN  
FLOOR PLAN  
REFLECTED CEILING PLAN  
SCOPE OF WORK  
  
A200: CROSS SECTION  
STAGE BACK WALL ELEVATION  
  
M100: HVAC PLAN  
E100: POWER PLAN  
E200: AV FLOOR PLAN

OWNER:

MICHAEL L. PARSON, GOVERNOR

DEPARTMENT OF PUBLIC SAFETY  
MISSOURI NATIONAL GUARD

PROJECT  
MANAGEMENT:

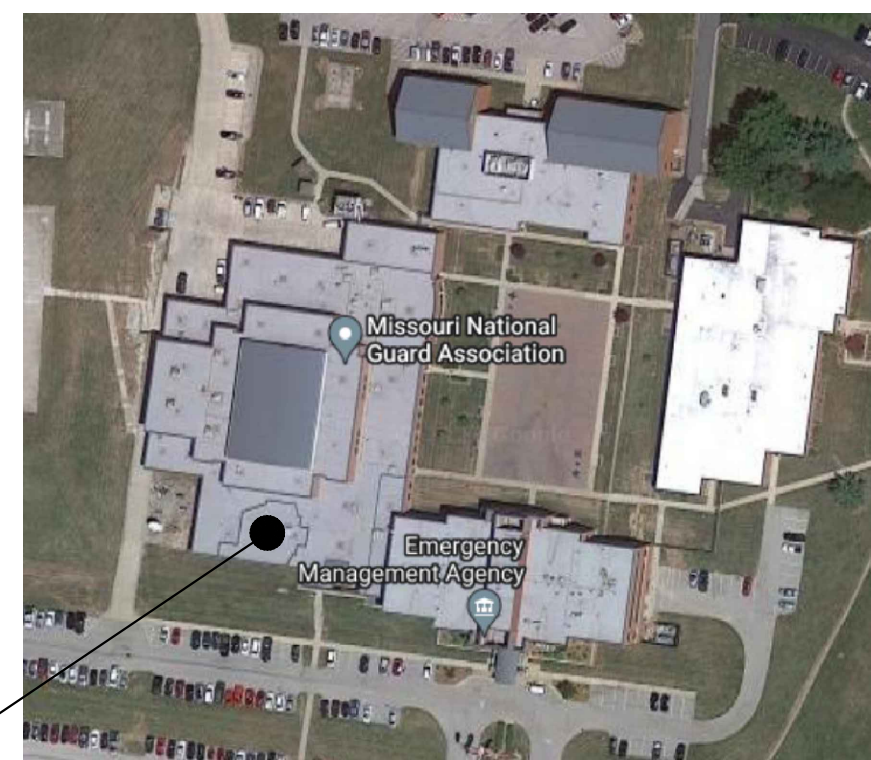
OFFICE OF ADMINISTRATION  
DIVISION OF FACILITIES MANAGEMENT  
DESIGN AND CONSTRUCTION

DESIGNER:

MISSOURI ARMY NATIONAL GUARD

PROJECT NUMBER: T2218-01

SITE NUMBER: 6300  
ASSET NUMBER: 8136300014



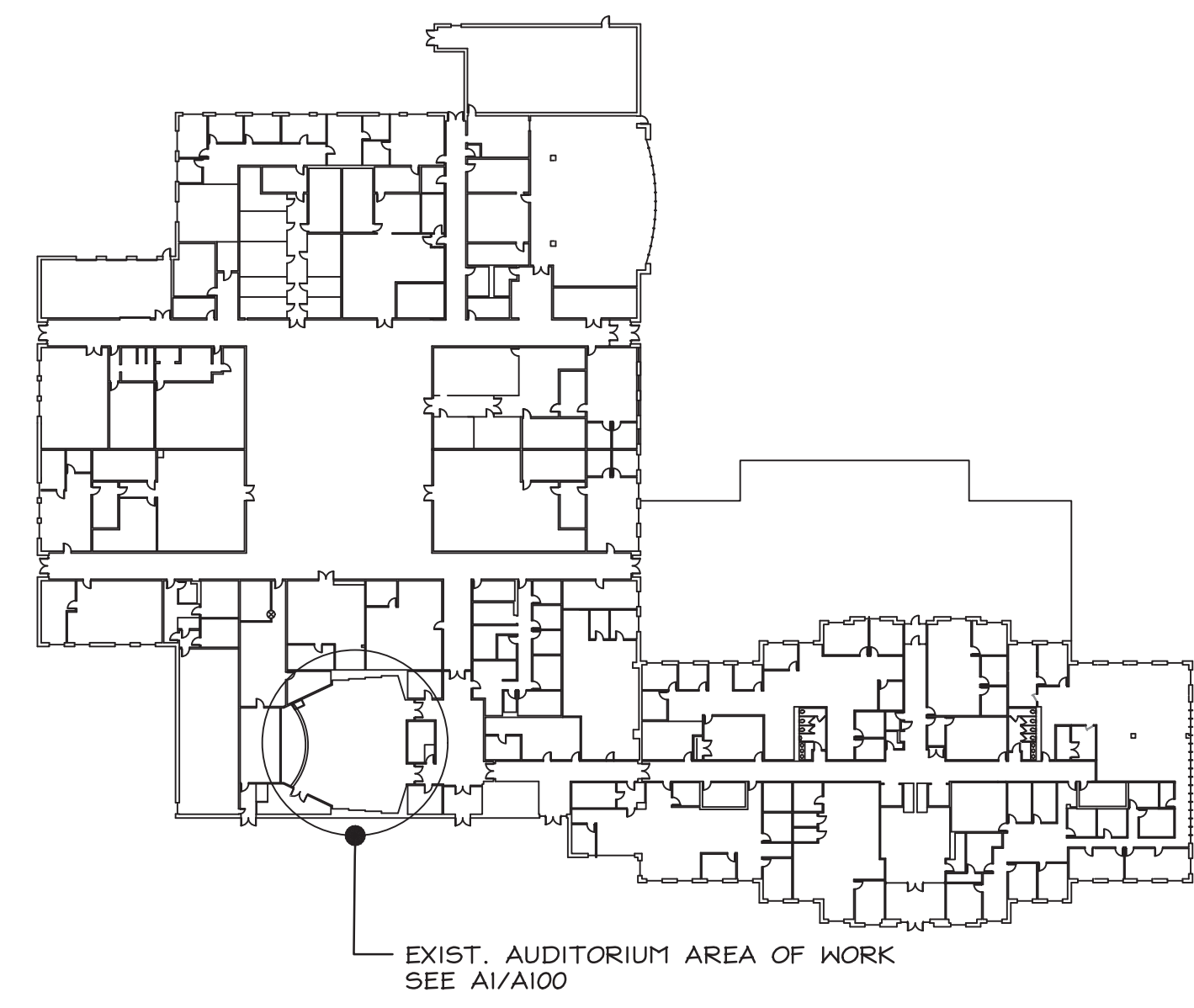
ADDRESS:  
2302 MILITIA DR.  
JEFFERSON CITY, MO 65101

SHEET NUMBER:

**GO01**

01 OF 6 SHEETS  
03/27/2023

D



CI KEY PLAN  
A100 SCALE: NONE

**GENERAL NOTES:**

1. CONTRACTOR SHALL FIELD VERIFY ALL DIMENSIONS.
2. ALL DEMO MATERIALS (INCLUDING EXISTING AUDITORIUM SEATING) SHALL BE REMOVED FROM THE SITE BY THE CONTRACTOR AND DISPOSED OF IN A LEGAL MANNER.
3. CONTRACTOR SHALL BE RESPONSIBLE FOR ASBESTOS TESTING AND IF POSITIVE, LAWFUL REMEDIATION AND DISPOSAL OF MATERIALS TO BE DEMOLISHED.

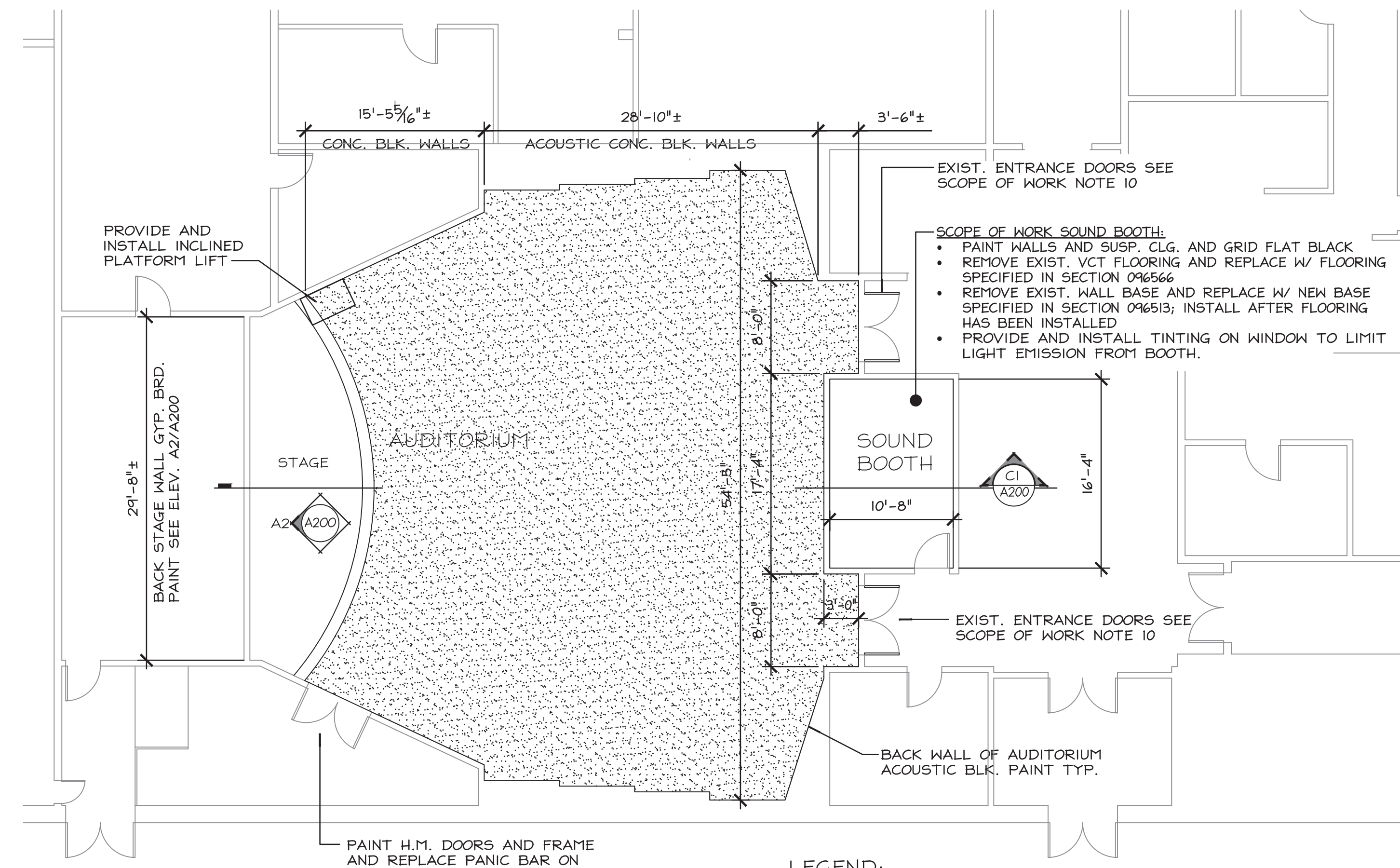
**SCOPE OF WORK:**

1. REMOVE EXISTING AUDITORIUM SEATING AND REPLACE WITH NEW SEATING AS SPECIFIED IN SECTION 126100. NEW SEATING SHALL MATCH EXISTING ARRANGEMENT (LAYOUT) AND COUNT OF 250 SEATS
2. REMOVE EXISTING AUDITORIUM FLOORING AND REPLACE WITH EPOXY FLOORING AS SHOWN ON A1/A100 AND SPECIFIED IN SECTION 096726. NOTE; NO WORK FOR STAGE FLOOR OR STEPS LEADING TO STAGE.
3. PREP AND PAINT WALLS IN AUDITORIUM PER SPECIFICATION SECTION 099100.
4. REMOVE AND DISPOSE EXISTING GYP. BOARD CEILING AND SUSPENSION SYSTEM IN AUDITORIUM AND REPLACE WITH NEW CEILING PER REFLECTED CEILING PLAN A4/A100 AND SPECIFIED IN SECTIONS 095113 AND 098436.
5. PAINT AREA ABOVE NEW CEILING INCLUDING STEEL DECK, BAR JOISTS, DUCTS, CONDUIT, ETC. AS SHOWN IN DRAWING C1/A200 AND AS SPECIFIED IN SECTION 099100.
6. REMOVE EXISTING PROJECTION SCREEN AND INSTALL NEW PROJECTION SCREEN SPECIFIED IN SECTION 115213.
7. STAGE BACK WALL; PAINT WALL BLACK AND PROVIDE AND INSTALL SELF ADHERING VINYL GRAPHICS FOR STAGE BACK WALL PER ELEVATION DRAWING A2/A200. PROVIDE AND SUBMIT SHOP DRAWINGS OF GRAPHICS AND LAYOUT FOR APPROVAL. PROVIDE A MOCKUP OF ONE OF THE SYMBOLS AND IF APPROVED MAY BECOME PART OF THE WORK.
8. PROVIDE WORK FOR SOUND BOOTH PER SCOPE NOTED ON DRAWING A1/A100.
9. PROVIDE AND INSTALL WHEELCHAIR LIFT IN LOCATION SHOWN ON A1/A100 AND SPECIFIED IN SECTION 144200.
10. AUDITORIUM ENTRANCE DOORS: DOUBLE DOORS, 2 ENTRANCES
  - REPLACE EXISTING WOOD DOORS WITH NEW WOOD DOORS TO MATCH VENEERS AND CONSTRUCTION, I.E., SOLID CORE, PLY LAYERS, ETC. REUSE ALL EXISTING HARDWARE AND FINISH TO MATCH EXISTING.
  - PAINT EXISTING H.M. FRAME.
11. SEE MECHANICAL AND ELECTRICAL DRAWINGS FOR ALL ELECTRICAL AND HVAC WORK.

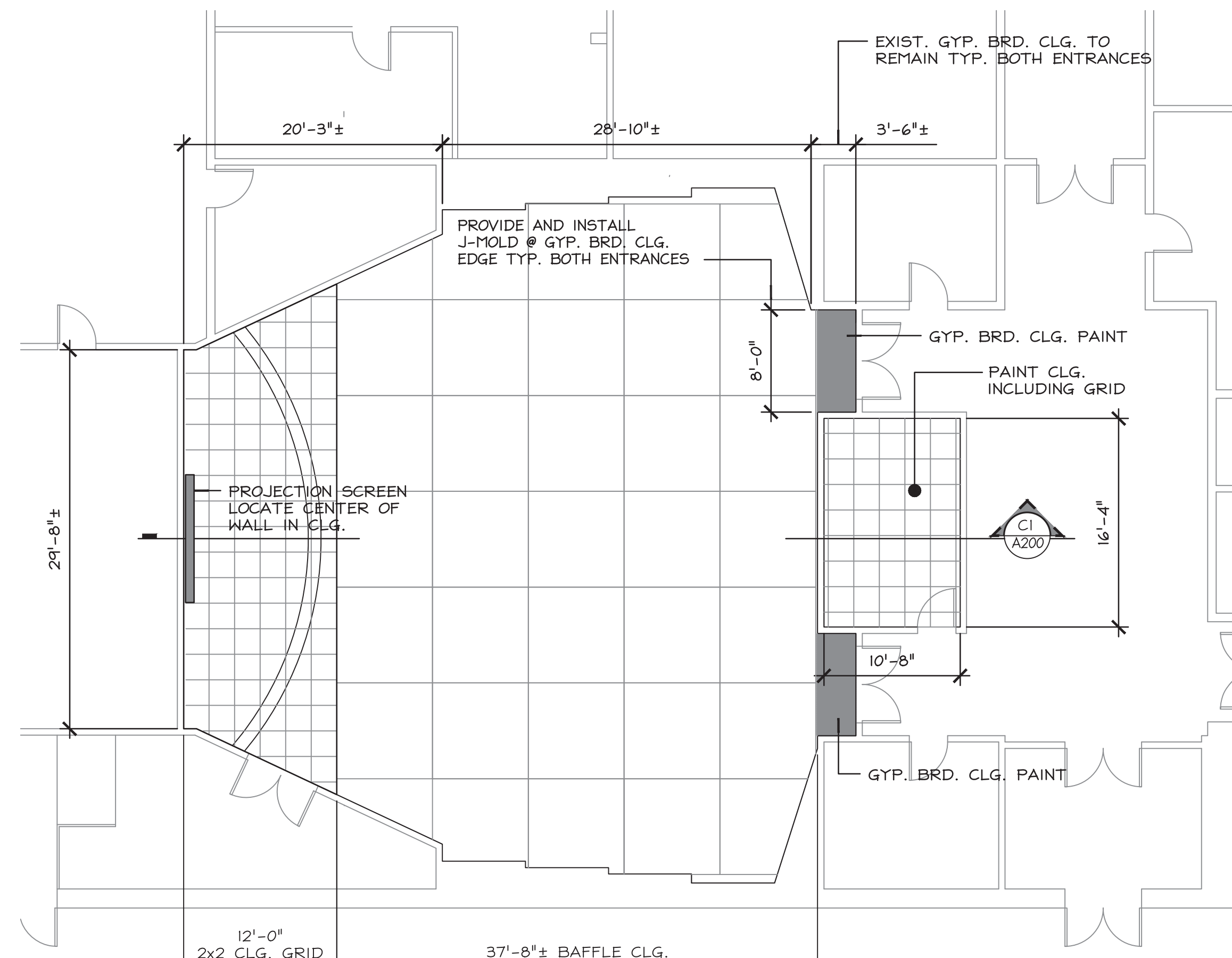
C

B

A



A1 FLOOR PLAN  
A100 SCALE: 1/8" = 1'-0"



A4 REFLECTED CLG. PLAN  
A100 SCALE: 1/8" = 1'-0"



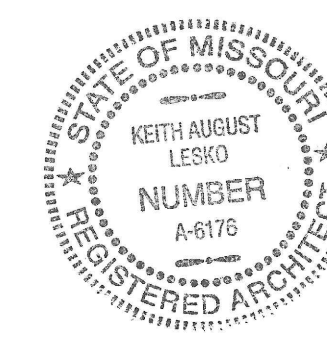
1

2

3

4

5



Digitally signed by  
LESKO, KEITH AUGUST: 145607154  
2  
Date: 2023.03.27 08:00:34 -05'00'

DATE: 03/27/2023  
KEITH A. LESKO  
ARCHITECT A-6176

OFFICE OF THE  
ADJUTANT GENERAL

MISSOURI NATIONAL GUARD  
FACILITIES DIVISION

OFFICE OF ADMINISTRATION  
DIVISION OF FACILITIES  
MANAGEMENT,  
DESIGN AND CONSTRUCTION

OFFICE OF THE  
ADJUTANT GENERAL

MISSOURI NATIONAL GUARD  
FACILITIES DIVISION

**AUDITORIUM RENOVATIONS**

ISTS READINESS CENTER  
6819 N. BOUNDARY RD.  
JEFFERSON CITY,  
COLE COUNTY, MISSOURI

PROJECT # T2218-01  
ASSET # 8136300014  
SITE # 6300

REVISION: \_\_\_\_\_  
DATE: \_\_\_\_\_  
REVISION: \_\_\_\_\_  
DATE: \_\_\_\_\_  
REVISION: \_\_\_\_\_  
DATE: \_\_\_\_\_

ISSUE DATE: 03/27/2023

CAD DWG FILE: \_\_\_\_\_  
DRAWN BY: KAL  
CHECKED BY: KAL  
DESIGNED BY: KAL

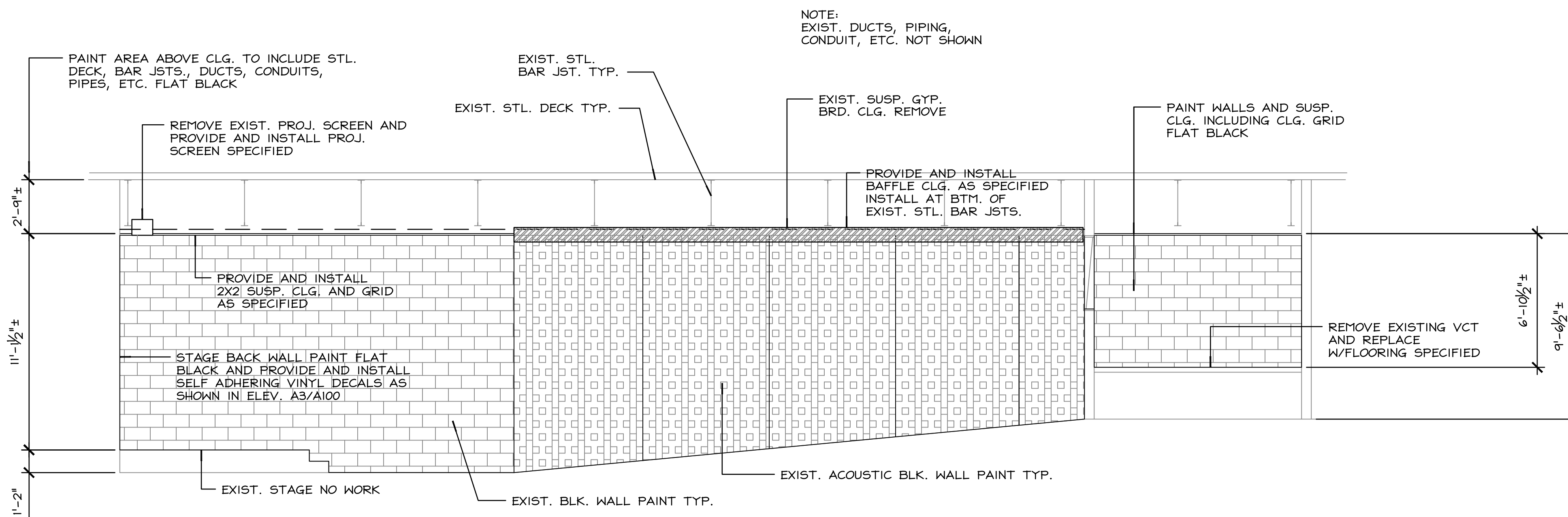
SHEET TITLE:

CROSS SECTION  
STAGE BACK WALL ELEVATION

SHEET NUMBER:

**A200**

SHEET 3 OF 6  
DATE 03/27/2023



c1 CROSS SECTION  
A200 SCALE: 1/4" = 1'-0"



A2 STAGE BACK WALL ELEV.  
A200 SCALE: NONE

**WALL GRAPHIC NOTES:**

1. CONTRACTOR SHALL PROVIDE SHOP DRAWINGS SHOWING SIZES, ETC. FOR GRAPHICS OF STAGE BACK WALL. SHOP DRAWING SHALL ALSO SHOW LAYOUT ON WALL.
2. FIRST LINE OF LETTERING APPROX. 9"± TALL
3. SECOND LINE OF LETTERING APPROX. 5"± TALL
4. CIRCULAR EMBLEMS APPROX. 1'-6"± DIA.
5. MINUTE MAN AND STATE GRAPHIC APPROX. 7'-6"± TALL x 7'-3"± WIDE.

D

C

B

A

1

2

3

4

5




1 **ISTS AUDITORIUM**  
M1 SCALE: 1/8"=1'-0" 1ST FLOOR

GRILLE AND REGISTER SCHEDULE				
MARK	MFG / MODEL	DAMPER	COLOR	DESCRIPTION
A	PRICE / SCD	YES	BLACK	SQUARE CEILING DIFFUSER, WITH PLASTER FRAME.

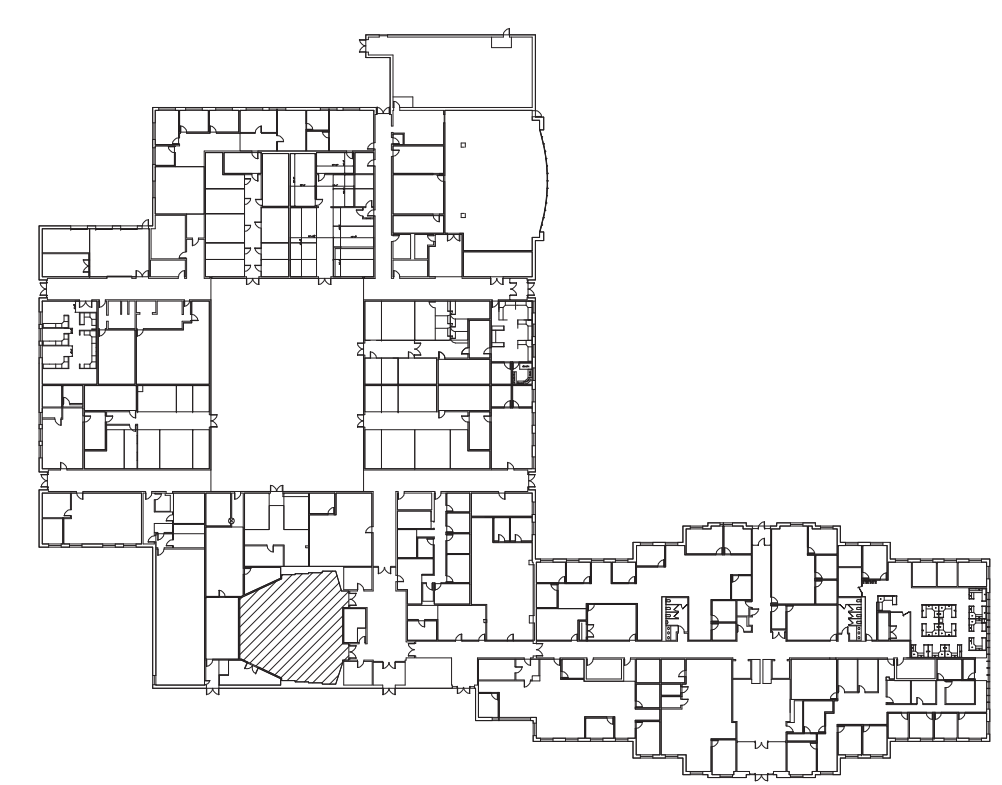
NOTES:  
 1. ALL GRILLES, REGISTERS, AND DIFFUSERS TO BE ALL ALUMINUM UNLESS NOTED OTHERWISE. STEEL CAN BE USED IF POWDER COATED PAINT IS APPLIED. QUANTITIES, SIZES, FRAMES AND ACCESSORIES TO BE CONFIRMED BY CONTRACTOR. NEW DIFFUSERS SHALL BE CONNECTED TO EXISTING DUCT WITH FLEX-DUCT.  
 2. MOUNT DIFFUSER FLUSH WITH BOTTOM OF CEILING.  
 3. APPROVED EQUAL BY TITUS OR HART-COOLEY.

**GENERAL NOTES:**

1. REMOVE EXISTING REGISTERS AND REPLACE WITH REGISTERS AS SHOWN IN SCHEDULE. COORDINATE WITH CEILING GRID.

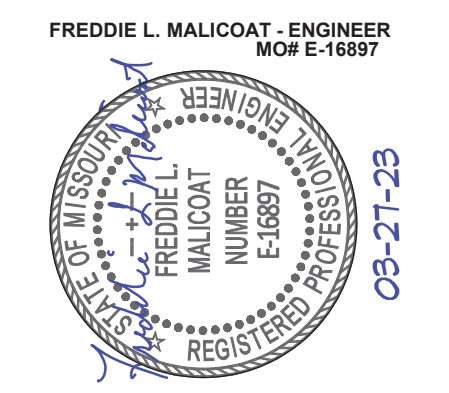
**KEYED NOTES:**

① 8" FLEX DUCT.  
 ② 24x24 GRILLE.  
 ③ 20x20 GRILLE.




2 **KEY PLAN**  
M1 NO SCALE

STATE OF MISSOURI  
MICHAEL L. PARSON,  
GOVERNOR



OFFICE OF THE  
ADJUTANT GENERAL

MISSOURI NATIONAL GUARD  
FACILITIES DIVISION

OFFICE OF ADMINISTRATION  
DIVISION OF FACILITIES  
MANAGEMENT,  
DESIGN AND CONSTRUCTION

OFFICE OF THE  
ADJUTANT GENERAL

MISSOURI NATIONAL GUARD  
FACILITIES DIVISION

**AUDITORIUM RENOVATIONS**

ISTS READINESS CENTER  
6819 N. BOUNDARY RD.  
JEFFERSON CITY,  
COLE COUNTY, MISSOURI

PROJECT # T2218-01  
ASSET # 8136300014  
SITE # 6300

REVISION:  
DATE: \_\_\_\_\_  
REVISION:  
DATE: \_\_\_\_\_  
REVISION:  
DATE: \_\_\_\_\_  
ISSUE DATE: 03-27-23

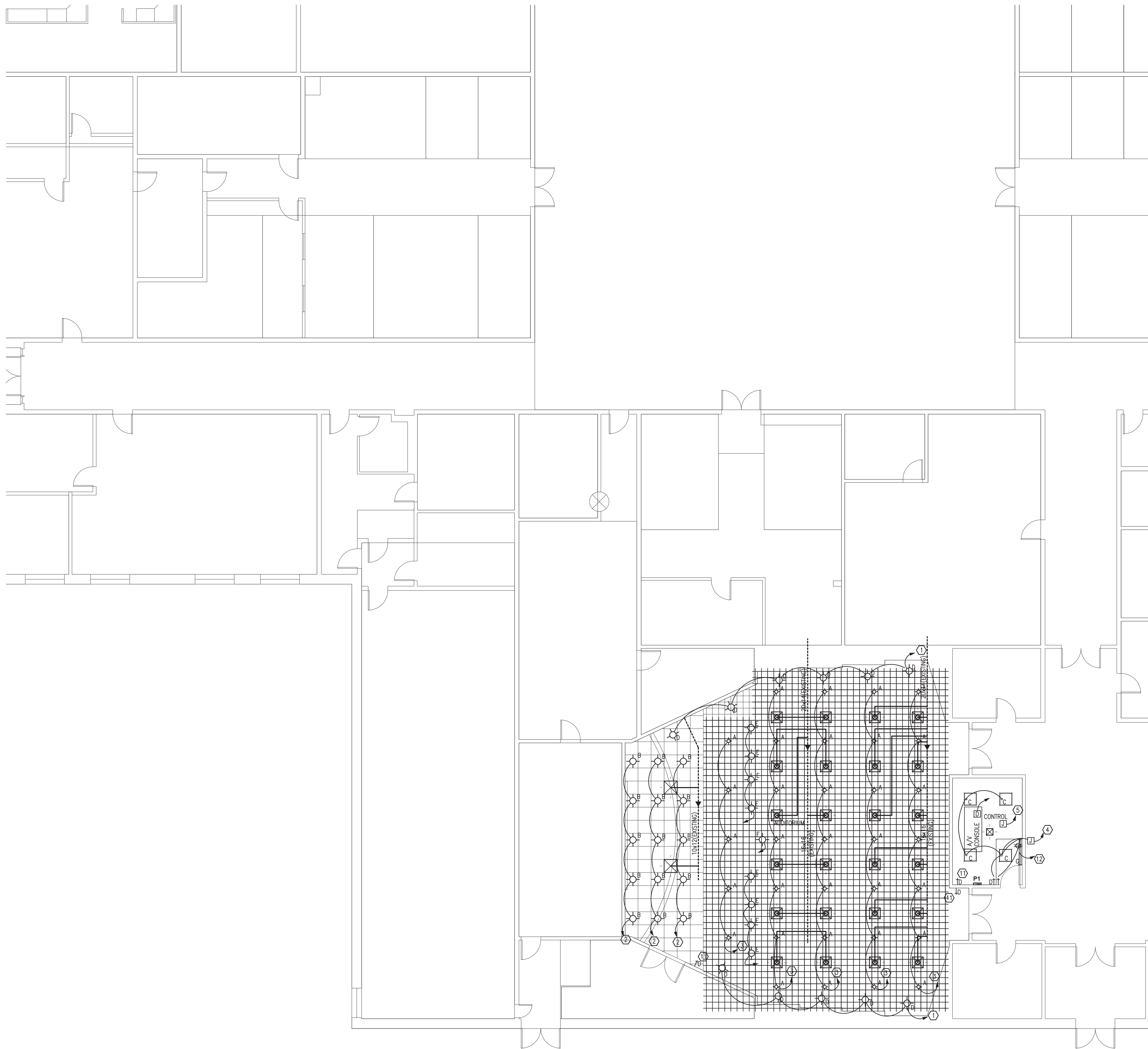
CAD DWG FILE: 22114.DWG  
DRAWN BY: \_\_\_\_\_  
CHECKED BY: \_\_\_\_\_  
DESIGNED BY: \_\_\_\_\_

SHEET TITLE:  
HVAC PLAN

SHEET NUMBER:

**M100**

SHEET 4 OF 6  
DATE 03-27-23

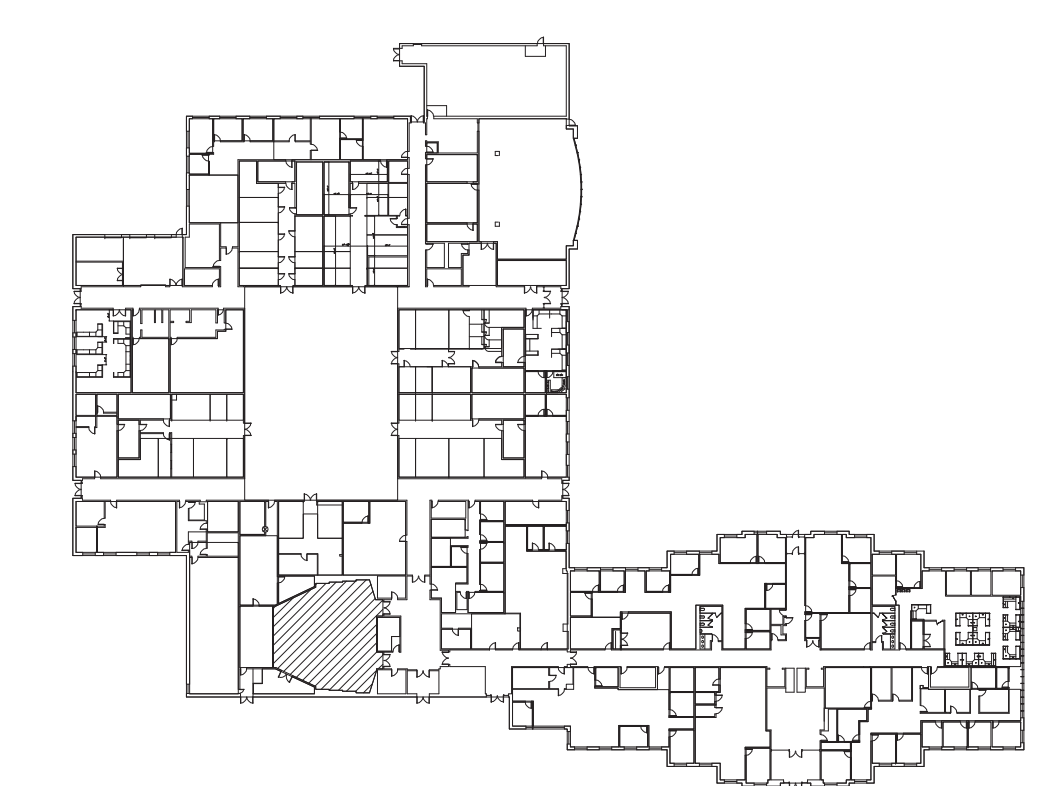


### LIGHTING FIXTURE SCHEDULE

MARK	MANUFACTURER AND MODEL NUMBER	TYPE	LAMPS		MOUNTING	REMARKS
			#	SIZE		
A	ATLANTIC LIGHTING PLED610-B60-VR20-30K	LED	1	20	RECESSED	1
B	ATLANTIC LIGHTING COM6-SYL40-30K-U-6CM10-CL	LED	1	37	RECESSED	1
C	EIKO GLOBAL BLP22PS40FCCTUD-35W 3500K	LED	1	28	RECESSED	1
D	LITON LCALDJ3	LED	1	20	SURFACE	1
E	OVATION P-56WW	LED	1	230	SURFACE	1
F	MAVERICK FORCE S PROFILE	LED	1	350	SURFACE	1
G	ORCARAIL ILLUMINATED HANDRAIL HR2-5-D-30-1-LF-EC	LED	1	20	SURFACE	1

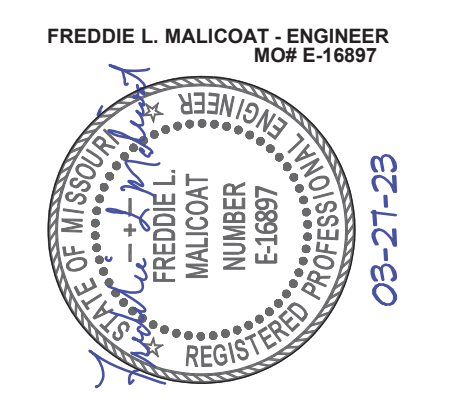
VERIFY COLOR AND MOUNTING HEIGHT WITH ARCHITECTURAL PLANS.  
1. BASIS OF DESIGN - NO EQUAL.

- ### KEYED NOTES:
- 1) TO LIGHTING CONTROL BOARD AND CIRCUIT P-1.
  - 2) TO LIGHTING CONTROL BOARD AND CIRCUIT P-3.
  - 3) TO LIGHTING CONTROL BOARD AND CIRCUIT P-5.
  - 4) EXISTING J-BOX AND CIRCUIT.
  - 5) AV CONSOLE, PANEL 2R1, CIRCUITS 50, 52, 54, 50A - 3P, 3-#6, #10 GROUND.
  - 6) ALL EXISTING RECEPTACLES, SWITCHES, AND COVER PLATES SHALL BE REPLACED WITH NEW. COLORS AS SELECTED BY ARCHITECT.
  - 7) CONCEALED CONDUIT SHALL BE MC CABLE. EXPOSED CONDUIT SHALL BE EMT-PAINTED. (COLOR AS SELECTED BY ARCHITECT)
  - 8) CEILING LIGHTS SHALL BE INSTALLED WITH THE BOTTOM AT THE SAME LEVEL AS THE BAFFLE CEILING SYSTEM.
  - 9) EXISTING PANELS SHALL HAVE NEW TYPED DIRECTORIES FOR ALL CIRCUITS.
  - 10) REMOVE EXISTING LIGHTS.
  - 11) DIMMER MODULE TO CONTROL LIGHTS "A", "B", "D", "E", "F".
  - 12) OUTLET FOR CHAIRLIFT. TO NEW 20A/1P CIRCUIT. COORDINATE WITH SUPPLIER.



**1** **ISTS AUDITORIUM**  
 E1 SCALE: 1/8"=1'-0" 1ST FLOOR

**2** **KEY PLAN**  
 E1 NO SCALE



**GENERAL NOTES:**

1. INPUTS: RGB, VIDEO, DVD, VHS, TUNER, MICROPHONES, SPEAKERS, UTC, CLOSED CAPTION, DIGITAL TV, NETWORK APPROVED CISCO DEVICES, AUDIO PATCH PANEL, XLR.
2. EQUIPMENT BY COLTRANE - NO EQUAL.

**KEYED NOTES:**

- 1 CONNECT TO EXISTING 50A, 3P CIRCUIT.
- 2 PENDANT MICROPHONE.
- 3 HARD-WIRED MICROPHONE.
- 4 MOTORIZED PROJECTION SCREEN, 20A, 1P CIRCUIT.

**A/V EQUIPMENT**

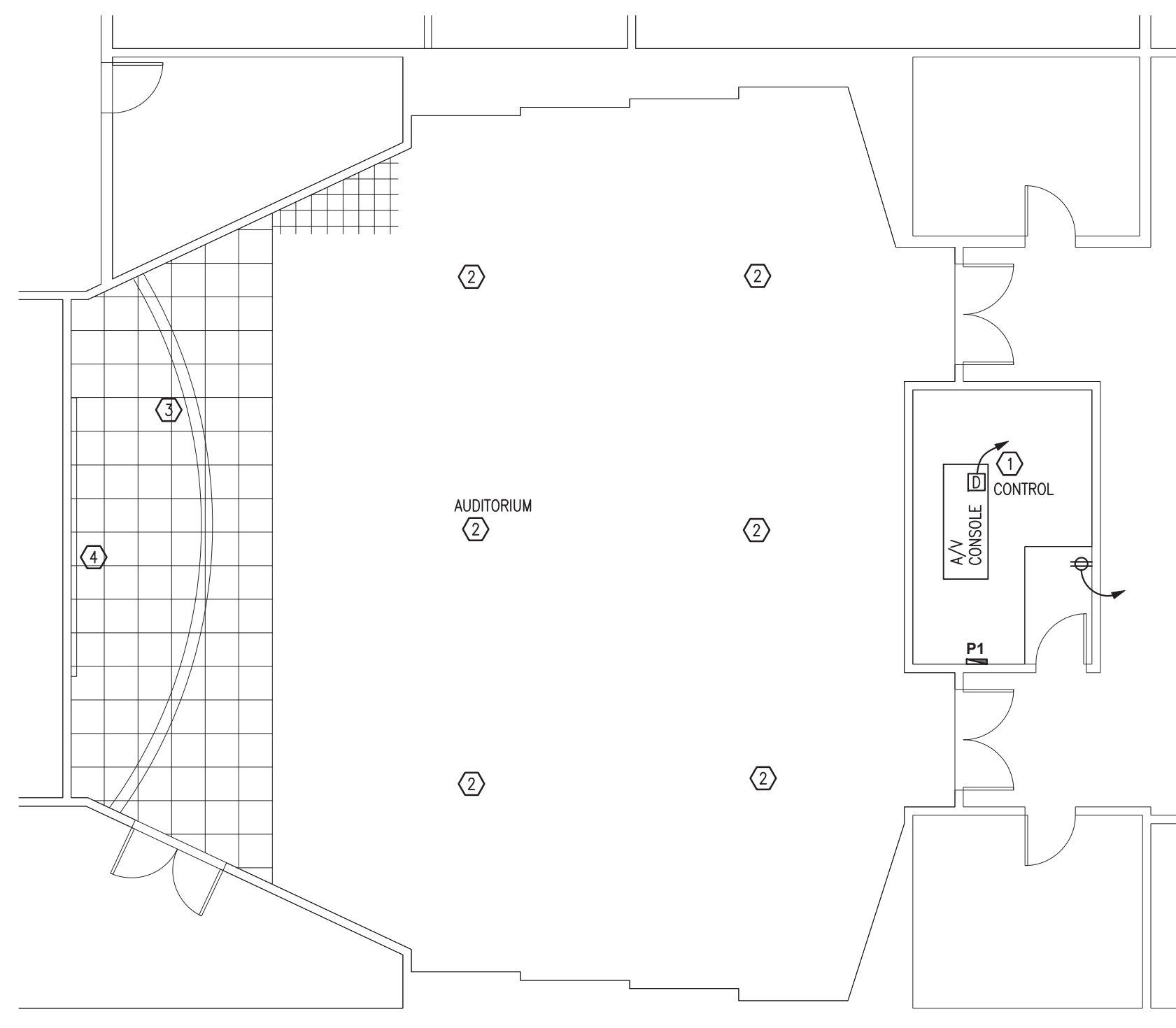
- 1 **Barco Commercial R9010263**  
Projector Black - body only
  - 1 Barco Commercial R9832778  
G Lens (WUXGA 2.90-5.50:1)
  - 1 Chief CMA345  
FLEX JOINT, 1-1/2" NPT
  - 1 Chief CMS006009  
ADJ. PIPE 6" TO 9"
  - 1 Chief VCM82X  
VCM82X INCL. CUSTOM HB82X BLK
- 1 **Blackmagic Design ATEM 1 M/E Constellation HD**  
ATEM 1 M/E Constellation HD is a high definition live production switcher packed with advanced features! The single M/E design includes 10 standards converted 3G-SDI inputs and 6 independent 3G-SDI aux outputs! It also includes a USB webcam output, DVE, chroma keyers, media players, multiview and mo
- 1 **Blackmagic Design CONVNTRM/AB/HSDI**  
Teranex Mini converter - HDMI to SDI 12G
- 1 **Cisco CS-CODEC-PLUS+**  
Webex Codec Plus
  - 1 Kramer Electronics C-HM/HM-6  
PREMIUM High-Speed HDMI Cable with Locking Connectors - 6'
- 1 **Cisco CS-T10-TS-K9=**  
[OFE] - Webex Room Navigator: Table Stand Version
  - 100 General Cable 7131801  
GenSPEED 6 Category 6 Pull Pac II Plenum Cable - White
- 1 **Cisco Webex PTZ 4K Camera**  
Premium pan-tilt-zoom camera that provides superior video quality, powerful zoom capabilities, intelligent AI-based features, and flexibility for optimized video collaboration experiences.
- 1 **Cisco Webex PTZ 4K Camera**  
[OFE] - Premium pan-tilt-zoom camera that provides superior video quality, powerful zoom capabilities, intelligent AI-based features, and flexibility for optimized video collaboration experiences.

**A/V EQUIPMENT (CONTINUED)**

- 1 **Crestron Electronics DMP53-4K-350-C**  
3-Series® 4K DigitalMedia™ Presentation System 350
  - 1 Coltrane Systems Crestron Programming  
Crestron Electronics custom system programming
- 2 **Crestron Electronics DM-RMC-4KZ-SCALER-C**  
DigitalMedia 8G+® 4K60 4:4:4 HDR Receiver and Room Controller with Scaler
  - 200 Belden 10GX53F 0091000  
10GX, Nonbonded-Pair, 4-pair, 23 AWG, CMP, Category 6A, F/UTP cable, White
  - 4 Belden RVAFPSME-S1  
REVConnect 10GX STP field mount plug, black, single pack
- 2 **Crestron Electronics DM-TX-200-C-2G-B-T**  
Wall Plate DigitalMedia 8G+® Transmitter 200, Black Textured
  - 200 Belden 10GX53F 0091000  
10GX, Nonbonded-Pair, 4-pair, 23 AWG, CMP, Category 6A, F/UTP cable, White
  - 4 Belden RVAFPSME-S1  
REVConnect 10GX STP field mount plug, black, single pack
- 2 **Crestron Electronics HD-RX-4KZ-101**  
DM Lite 4K60 4:4:4 Receiver for HDMI Signal Extension over CATx Cable
- 2 **Crestron Electronics HD-TX-4KZ-101**  
DM Lite 4K60 4:4:4 Transmitter for HDMI Signal Extension over CATx Cable
  - 200 Belden 10GX53F 0091000  
10GX, Nonbonded-Pair, 4-pair, 23 AWG, CMP, Category 6A, F/UTP cable, White
  - 4 Belden RVAFPSME-S1  
REVConnect 10GX STP field mount plug, black, single pack
- 2 **Crestron Electronics TS-1070-B-S**  
10.1 in. Tabletop Touch Screen, Black Smooth
  - 200 General Cable 7131801  
GenSPEED 6 Category 6 Pull Pac II Plenum Cable - White
- 1 **Da-Lite 70226**  
208" Diagonal Size, Da-Mat, Tensioned LaRGe Advantage Deluxe Electrol Screen - 16:10 Wide Format

**A/V EQUIPMENT (CONTINUED)**

- 1 **Extron RGB-HDMI 300 A**  
RGB and Stereo Audio to HDMI Scaler
- 1 **Extron WPD 102 XLRM (White)**  
Pass-Through Wallplate with Two XLR Connectors - Decorator-Style; White
  - 200 Belden 6500FE 877U1000  
6500FE series 2 conductor, 22 AWG, flame test 6, shielded cable, gray
- 1 **Intel NUC**  
Custom NUC PC for digital signage with 160GB HDD, 8GB RAM, Windows 10
- 1 **Middle Atlantic L2LDC2CCMGCC**  
L2 Lectern, 28W25D, C, Gc
- 1 **Middle Atlantic RCS-2724**  
RCS series residential configured rack system, 27 space, metallic grey finish
  - 1 Middle Atlantic PD-915R  
Rack mount power module 6 switched, 1 unswitched, 15Amp
- 2 **Planar PXN2400**  
24in wide black FHD IPS LED LCD, narrow bezel, VGA, HDMI, DP, speakers
- 10 **QSC AC-C6T**  
6.5" Two-way ceiling speaker, 70/100V transformer with 8Ω bypass, 110° conical coverage, includes C-ring and rails for blind mount installation. Priced individually, sold only in pairs.
  - 1000 Belden 6200UE 877U1000  
Security & Commercial Audio Cable, Plenum-CL2P 2-16 AWG stranded bare copper conductors with Flamarrrest insulation, Flamarrrest jacket with ripcord
- 1 **QSC AP-212sw**  
Dual 12" folded baffle subwoofer, 2x pole cups for horizontal or vertical deployments, dual crossed NL4 inputs. Color - Black.
- 4 **QSC AP-5102-WH**  
10" High-power two-way surface speaker, 105° conical DMT™ coverage, trapezoidal install enclosure with M10 suspension fittings. Color - White.
  - 400 Belden 6200UE 877U1000  
Security & Commercial Audio Cable, Plenum-CL2P 2-16 AWG stranded bare copper conductors with Flamarrrest insulation, Flamarrrest jacket with ripcord
  - 4 QSC AP-YM10-BK  
Yoke mount for the AP-5102. Color - Black.



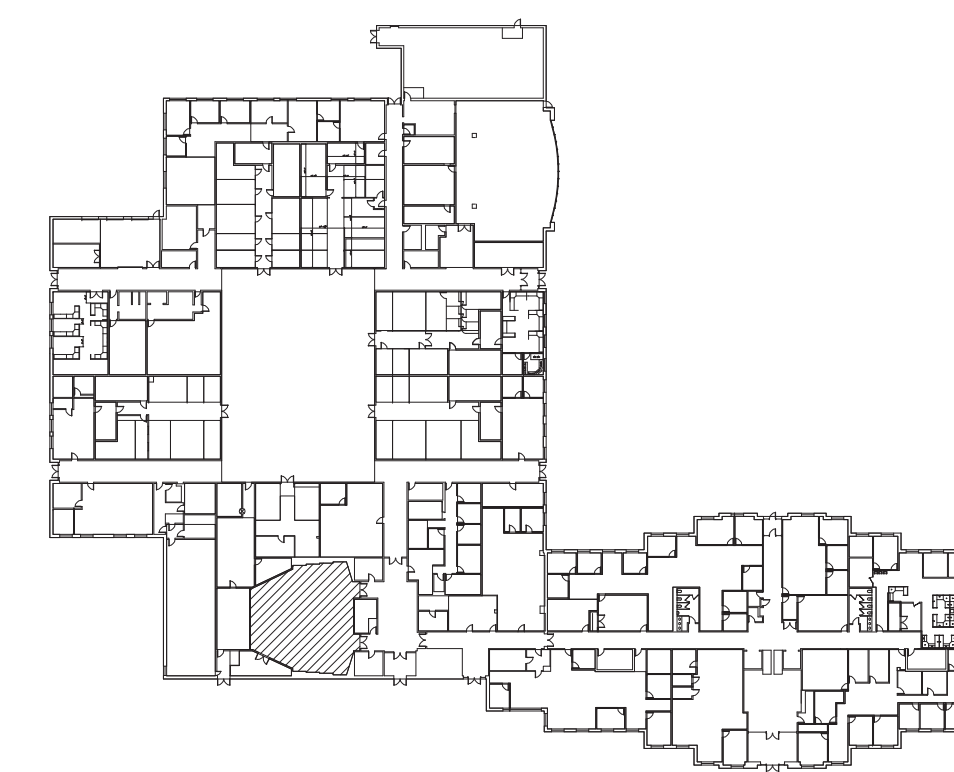
1 **ISTS AUDITORIUM**  
E200 SCALE: 1/8"=1'-0" 1ST FLOOR

**A/V EQUIPMENT (CONTINUED)**

- 1 **QSC CORE 110F**  
Unified Core with 24 local audio I/O channels, 128x128 total network I/O channels with 8x8 Software-based Dante license included, USB AV bridging, dual LAN ports, POTS and VoIP telephony, 16x16 GPIO, 16 next-generation AEC processors, TRU.
  - 1 Coltrane Systems Q-SYS Programming  
QSC Q-SYS custom system programming
- 2 **QSC CX-Q 2K4**  
4-Channel 500W/CH Q-SYS Network Amplifier, Lo-Z, 70V, 100V direct drive, FlexAmp™, Mic/line Inputs, 100-240V.
- 1 **QSC NS10-125+**  
10-port network switch preconfigured for Q-SYS Audio, Video and Control with 8x PoE+ ports and 125 Watts PoE budget. Features advanced QoS and IGMP configuration to also support AES67 and Dante within the same VLAN.
- 2 **SCT RCS-CW4-S**  
RemoteCam5™ Project Pack >> Extension Kit + RC-RK2™ Rack Shelf
  - 400 Belden 10GX53F 0091000  
10GX, Nonbonded-Pair, 4-pair, 23 AWG, CMP, Category 6A, F/UTP cable, White
  - 2 Belden RVAFPSME-S1  
REVConnect 10GX STP field mount plug, black, single pack
- 1 **Shure MX415/C**  
15" Shock-Mounted Gooseneck, Cardioid, includes surface mount Preamplifier
  - 200 Belden 6500FE 877U1000  
6500FE series 2 conductor, 22 AWG, flame test 6, shielded cable, gray
- 4 **Shure MXA920W-S**  
Ceiling Array Microphone, Square, White, 24 inch
  - 400 General Cable 7131801  
GenSPEED 6 Category 6 Pull Pac II Plenum Cable - White
- 3 **Shure MXW1**  
Hybrid bodypack transmitter
  - 3 Shure MX150B/C-TQG  
Cardioid 5mm Subminiature Lavalier Microphone, TQG for Shure Bodypacks, Black
- 3 **Shure MXW2/SM58**  
Handheld wireless microphone transmitter

**A/V EQUIPMENT (CONTINUED)**

- 1 **Shure MXWAPT8**  
Eight channel access point transmitter
  - 100 General Cable 7131801  
GenSPEED 6 Category 6 Pull Pac II Plenum Cable - White
- 1 **Shure MXWNC5B**  
8-CH NETWORKED CHARGING STATION
  - 100 General Cable 7131801  
GenSPEED 6 Category 6 Pull Pac II Plenum Cable - White



2 **KEY PLAN**  
E200 NO SCALE

