

EXPAND PARKING READINESS CENTER DEXTER, MISSOURI

OWNER: STATE OF MISSOURI
MICHAEL L. PARSON, GOVERNOR

OFFICE OF THE ADJUTANT GENERAL
DEPARTMENT OF PUBLIC SAFETY

PROJECT MANAGEMENT: CONSTRUCTION & FACILITIES MANAGEMENT OFFICE



SHEET INDEX	
G-001	COVER SHEET
C-101	SITE PLAN
C-102	POV PARKING PLAN
C-103	POV STAKEOUT
C-104	ALTERNATE 1
E1	LIGHTING PLAN

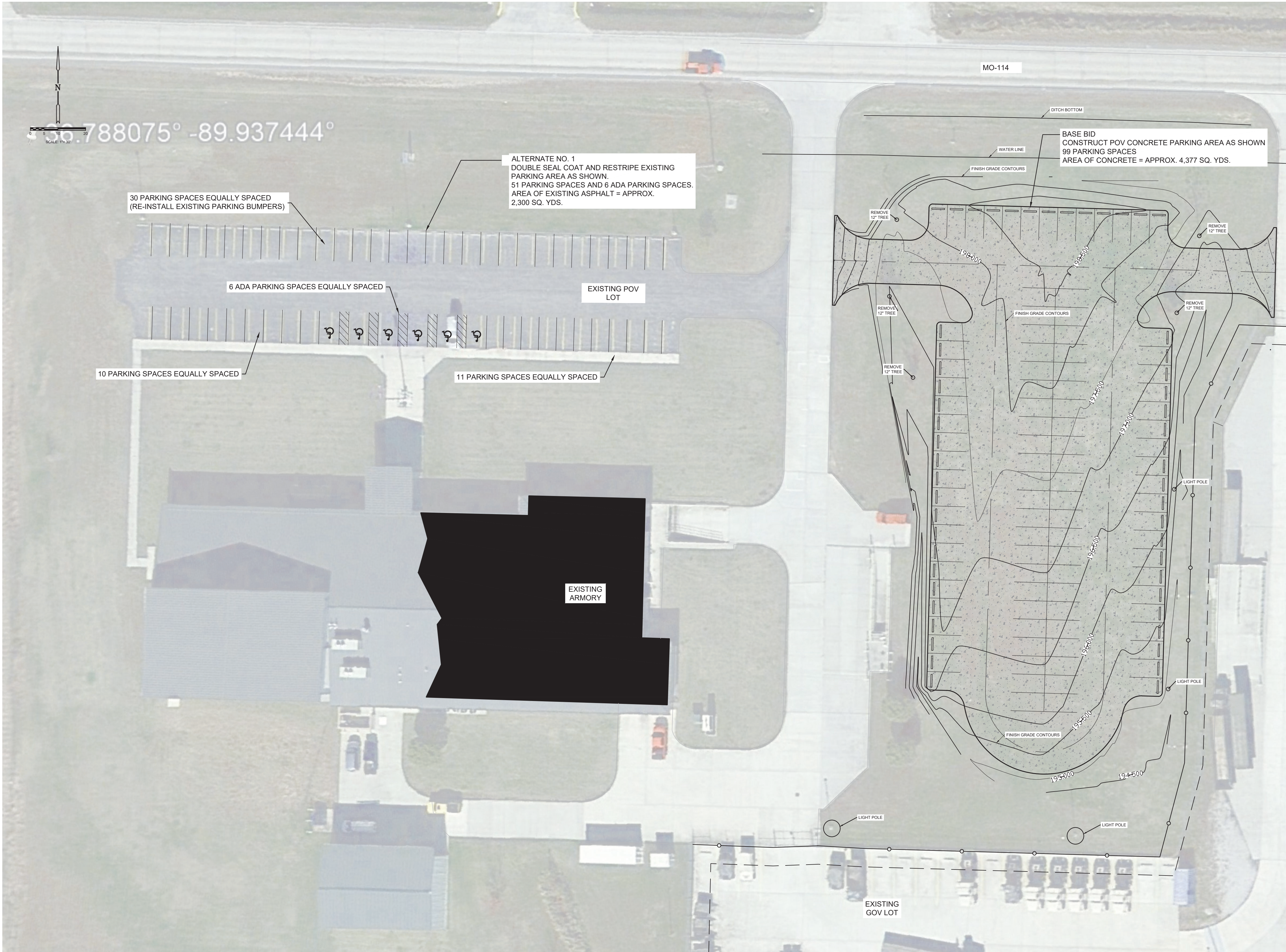
DESIGNER: MITCH STROTHER PE
MISSOURI ARMY NATIONALGUARD

PROJECT NUMBER: T2237-01

SITE NUMBER: 6321
FACILITY NUMBER: 8136321001



ADDRESS:
1702 STATE HIGHWAY 114 EAST
DEXTER, MO 63841



GENERAL NOTES:

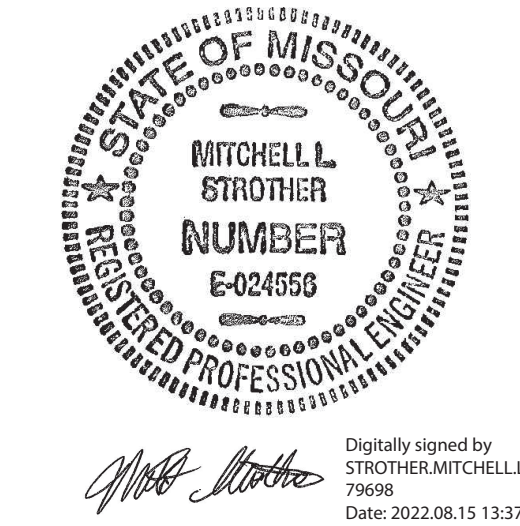
1. UNDERGROUND FACILITIES, STRUCTURES AND UTILITIES HAVE BEEN PLOTTED FROM AVAILABLE SURVEYS AND RECORDS AND, THEREFORE, LOCATIONS MUST BE CONSIDERED APPROXIMATE ONLY. THERE MAY BE OTHERS, THE EXISTENCE OF WHICH, AT PRESENT, IS NOT KNOWN. VERIFICATION OF THE LOCATIONS OF UNDERGROUND UTILITIES, SHOWN OR NOT SHOWN, WILL BE THE RESPONSIBILITY OF THE CONSTRUCTION CONTRACTOR. THE CONTRACTOR SHALL CONTACT THE MISSOURI ONE CALL SYSTEM AT 1-800-DIG-RITE (1-800-344-7483) PRIOR TO EXCAVATION OR DEMOLITION.
2. NO GUARANTEE IS GIVEN FOR THE ACCURACY OF QUANTITIES AND DIMENSIONS SHOWN. QUANTITIES AND DIMENSIONS ARE TO BE USED TO FORMULATE A GENERAL IDEA OF THE SIZE OF THE PROJECT. IT IS THE CONTRACTOR'S RESPONSIBILITY TO INSPECT THE SITE AND ESTIMATE QUANTITIES PRIOR TO BIDDING. THE CONTRACTOR SHALL BE RESPONSIBLE FOR ALL WORK SHOWN ON THE DRAWINGS AND AS SPECIFIED IN THE CONTRACT SPECIFICATIONS. NO PAYMENT ADDITIONS OR REDUCTIONS WILL BE MADE FOR INCORRECT QUANTITY APPROXIMATIONS SHOWN WITHIN THESE CONTRACT DRAWINGS.
3. THE CONTRACTOR SHALL REMOVED ALL EXCESS OR UNUSABLE EXCAVATED MATERIALS AND LEGALLY DISPOSE OF OFF OWNERS SITE.
4. PROJECT LOCATION:
DEXTER READINESS CENTER
1702 STATE HIGHWAY 114 EAST
DEXTER, MO 63841

ESTIMATED QUANTITIES			
BASE BID			
1	MOBILIZATON/DEMOLIBILIZATION	1	LUMP SUM
2	PAVEMENT MARKINGS	1984	LIN. FT.
3	REINFORCED CONCRETE PAVEMENT	4377	SQ. YD.
4	CONCRETE PARKING BLOCK	53	EACH
5	TYPE 1 AGGREGATE BASE ROCK	800	TON
6	EARTHWORK (FILL)	645	CU. YD.
7	CLEARING & GRUBBING	1	LUMP SUM
8	AGRICULTURAL WORK (SEED, MULCH, FERTILIZER)	1	LUMP SUM
ALTERNATE NO. 1			
1	MOBILIZATON/DEMOLIBILIZATION	1	LUMP SUM
2	DOUBLE SEAL COAT	2300	SQ. YD.
3	PAVEMENT MARKINGS	1450	LIN. FT.



OFFICE OF THE
ADJUTANT GENERAL

MISSOURI NATIONAL GUARD
FACILITIES DIVISION



DATE: 08/15/2022 MITCHELL L. STROTHER
PROFESSIONAL ENGINEER - E-024556

OFFICE OF
ADMINISTRATION

DIVISION OF FACILITIES
MANAGEMENT, DESIGN
AND CONSTRUCTION

READINESS CENTER
EXPAND PARKING

DEXTER, MISSOURI

PROJECT # T2237-01
SITE # 6321
FACILITY # 8136321001

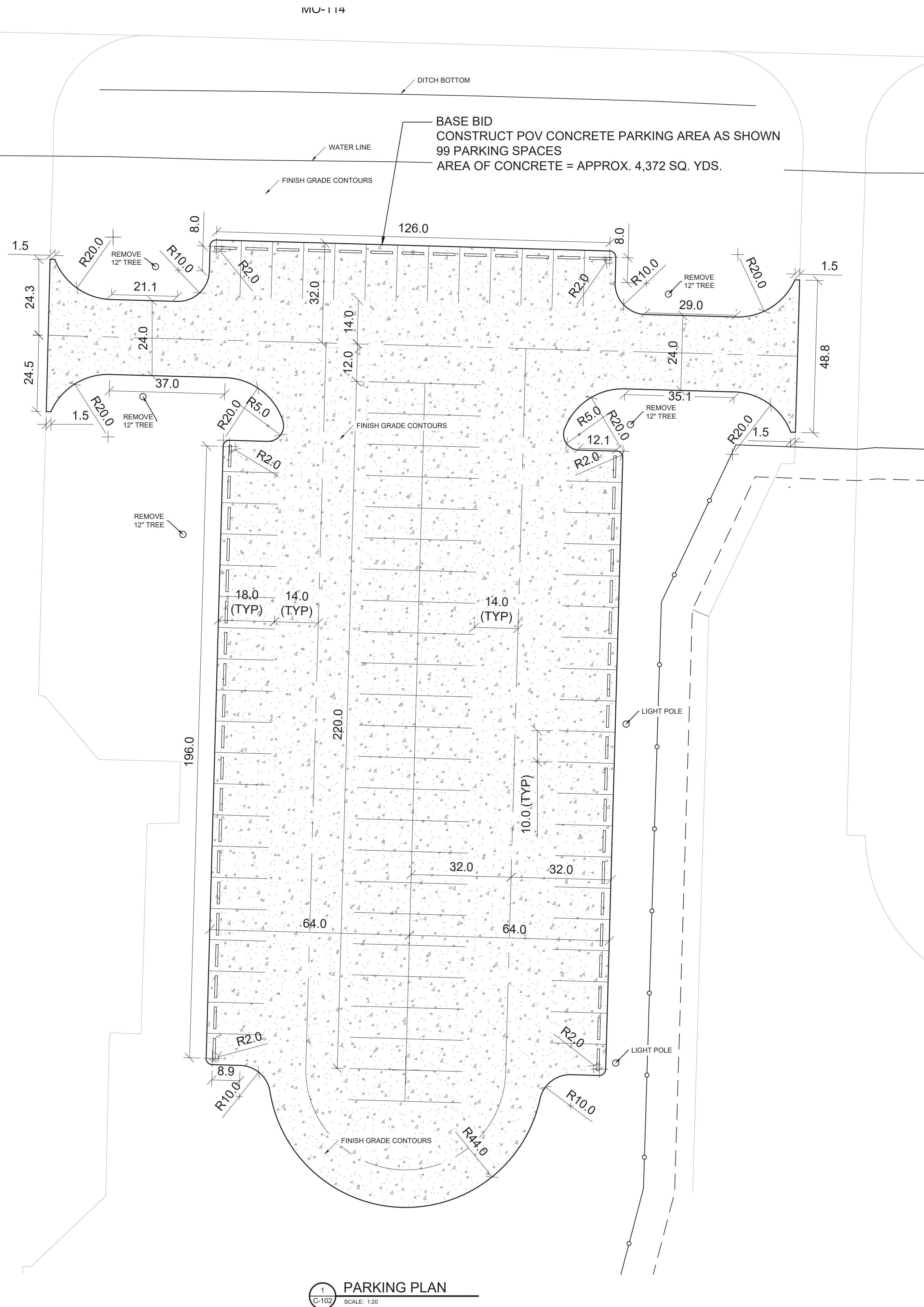
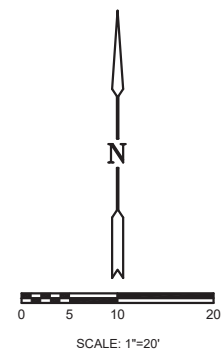
REVISION: 1 _____
DATE: 2 _____
REVISION: 3 _____
DATE: 4 _____
REVISION: 5 _____
DATE: 6 _____
ISSUE DATE: 08/11/2022

CAD DWG FILE:
DEXTER NEW POV.dwg
DRAWN BY: VMR
CHECKED BY: MLS
DESIGNED BY: MLS

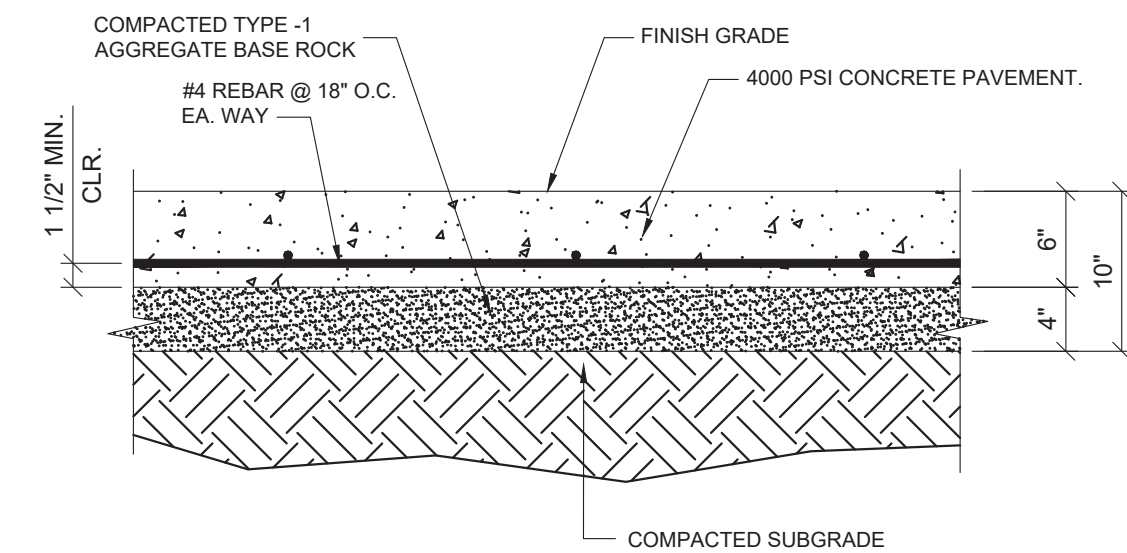
SHEET TITLE:
SITE PLAN

SHEET NUMBER:

C-101
2 OF 6 SHEETS

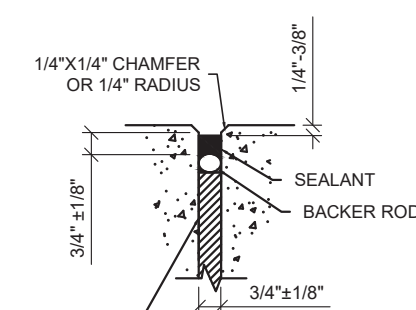


1
C-102
PARKING PLAN
SCALE: 1:20

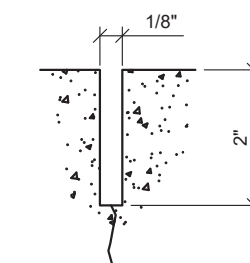


- NOTES:
1. 1/2\"/>
 2. REINFORCING STEEL SHALL BE SUPPORTED WITH BAR CHAIRS W/ CONTINUOUS RUNNERS SPACED AT 4 FEET C/C MAXIMUM.

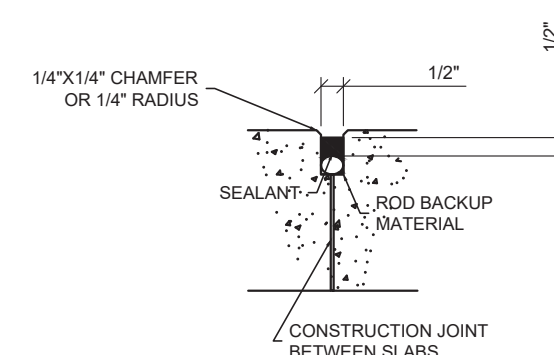
2
C-101
TYP. CONCRETE PAVEMENT
SCALE: 1\"/>



EXPANSION JOINT

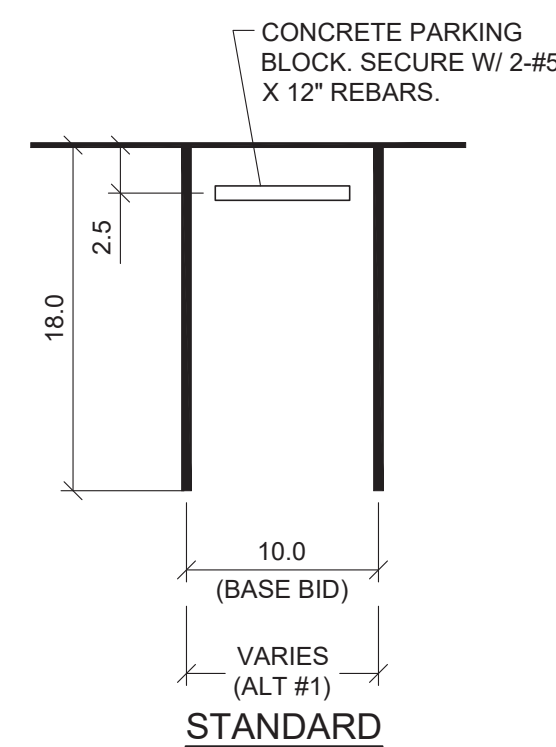


CONTROL JOINT

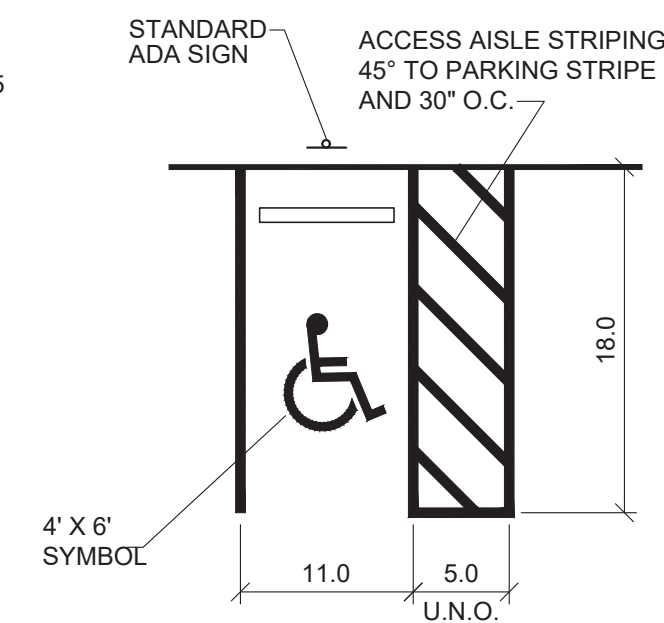


CONSTRUCTION JOINT

3
C-102
JOINT DETAILS
NO SCALE



STANDARD



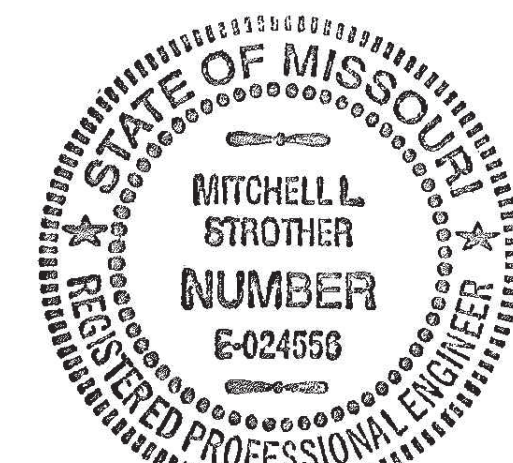
ACCESSIBLE

4
C-102
PARKING DETAILS
SCALE: 1:10



OFFICE OF THE
ADJUTANT GENERAL

MISSOURI NATIONAL GUARD
FACILITIES DIVISION



Digitally signed by
STROTHER, MITCHELL L. E. 1
514279698
Date: 2022.08.15 13:40:30
+05'00'

DATE: 08/15/2022 MITCHELL L. STROTHER
PROFESSIONAL ENGINEER - E-024556

OFFICE OF
ADMINISTRATION

DIVISION OF FACILITIES
MANAGEMENT, DESIGN
AND CONSTRUCTION

EXPAND PARKING
READINESS CENTER

DEXTER, MISSOURI

PROJECT # T2237-01
SITE # 6321
FACILITY # 8136321001

REVISION: 1 _____
DATE: 2 _____
REVISION: 3 _____
DATE: 4 _____
REVISION: 5 _____
DATE: 6 _____
ISSUE DATE: 08/11/2022

CAD DWG FILE:
DEXTER NEW POV.dwg
DRAWN BY: VMR
CHECKED BY: MLS
DESIGNED BY: MLS

SHEET TITLE:
POV PARKING PLAN

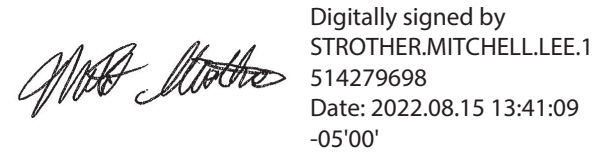
SHEET NUMBER:

C-102

3 OF 6 SHEETS



POINT NUMBER	NORTHING	EASTING	ELEVATION	DESCRIPTION
1	347806.8070	985344.3460	198.266	CP 1
2	347842.2680	985461.1060	195.658	CP 2
275	347952.7622	985376.2137	199.340	MATCH EXISTING
276	347977.2072	985376.8344	199.537	MATCH EXISTING
277	348001.5486	985377.4519	199.613	MATCH EXISTING
278	348001.5105	985378.9514	199.510	EDGE OF PAVEMENT
279	348008.6383	985397.6382	199.181	CENTER 20' RADIUS
280	347992.3279	985386.0636	198.731	EDGE OF PAVEMENT
281	347988.6461	985397.0794	197.950	EDGE OF PAVEMENT
282	347988.0560	985418.1926	197.770	EDGE OF PAVEMENT
283	347998.0521	985418.4179	197.953	CENTER 10' RADIUS
284	347990.7863	985425.3427	197.925	EDGE OF PAVEMENT
285	347997.7728	985428.4680	198.080	EDGE OF PAVEMENT
286	348005.7696	985428.6915	198.240	EDGE OF PAVEMENT
287	348005.7138	985430.6907	198.260	CENTER 2' RADIUS
288	348007.1669	985429.3166	198.256	EDGE OF PAVEMENT
289	348007.7130	985430.7466	198.300	EDGE OF PAVEMENT
290	348006.7631	985464.7333	198.640	EDGE OF PAVEMENT
291	348005.8133	985498.7201	198.980	EDGE OF PAVEMENT HIGH POINT
292	348004.1930	985556.6974	198.400	EDGE OF PAVEMENT
293	348002.1937	985556.6416	198.304	CENTER 2' RADIUS
294	348003.5679	985558.0947	198.337	EDGE OF PAVEMENT
295	348002.1379	985558.8408	198.370	EDGE OF PAVEMENT
296	347994.1410	985558.4173	197.900	EDGE OF PAVEMENT
297	347993.8616	985568.4134	197.315	CENTER 10' RADIUS
298	347986.9909	985561.1475	197.430	EDGE OF PAVEMENT
299	347983.8655	985568.1340	196.960	EDGE OF PAVEMENT
300	347983.6009	985577.6032	196.400	EDGE OF PAVEMENT
301	347983.4612	985582.6012	196.300	LOW POINT EDGE OF PAVEMENT
302	347983.0545	985597.1520	196.850	EDGE OF PAVEMENT
303	348003.0467	985597.7108	197.637	CENTER 20' RADIUS
304	347986.1321	985608.3829	197.300	EDGE OF PAVEMENT
305	347994.9439	985615.9958	197.740	EDGE OF PAVEMENT
306	347994.9028	985617.4963	197.803	MATCH EXISTING
307	347970.5000	985616.8276	197.446	MATCH EXISTING
308	347946.1198	985616.1595	197.106	MATCH EXISTING
309	347946.1608	985614.6603	197.040	EDGE OF PAVEMENT
310	347939.0707	985595.9592	196.448	CENTER 20' RADIUS
311	347955.3664	985607.5529	196.825	EDGE OF PAVEMENT
312	347959.0629	985596.5179	196.610	EDGE OF PAVEMENT
313	347959.4704	985581.9308	196.060	LOW POINT EDGE OF PAVEMENT
314	347959.6101	985576.9328	196.160	EDGE OF PAVEMENT
315	347960.0422	985561.4700	196.528	EDGE OF PAVEMENT
316	347940.0500	985560.9113	197.026	CENTER 20' RADIUS
317	347956.6962	985549.8250	197.172	EDGE OF PAVEMENT
318	347947.2409	985542.2487	197.756	EDGE OF PAVEMENT
320	347945.4432	985546.9143	197.565	CENTER 5' RADIUS
321	347942.6716	985542.7528	197.441	EDGE OF PAVEMENT
322	347940.4451	985546.7746	197.338	EDGE OF PAVEMENT
323	347940.1059	985558.9120	197.091	EDGE OF PAVEMENT
324	347938.1067	985558.8562	197.097	CENTER 2' RADIUS
325	347939.4808	985560.3093	197.055	EDGE OF PAVEMENT
326	347938.0508	985560.8554	197.061	EDGE OF PAVEMENT
327	347910.0619	985560.0732	196.782	EDGE OF PAVEMENT
328	347880.0736	985559.2351	196.483	EDGE OF PAVEMENT
329	347850.0853	985558.3969	196.184	EDGE OF PAVEMENT
330	347820.0970	985557.5589	195.885	EDGE OF PAVEMENT
331	347790.1088	985556.7208	195.586	EDGE OF PAVEMENT
332	347760.1205	985555.8827	195.287	EDGE OF PAVEMENT
333	347742.1273	985555.3798	195.099	EDGE OF PAVEMENT
334	347742.1832	985553.3806	195.098	CENTER 2' RADIUS
335	347740.73			

MISSOURI NATIONAL GUARD
FACILITIES DIVISION

DIVISION OF FACILITIES MANAGEMENT, DESIGN AND CONSTRUCTION

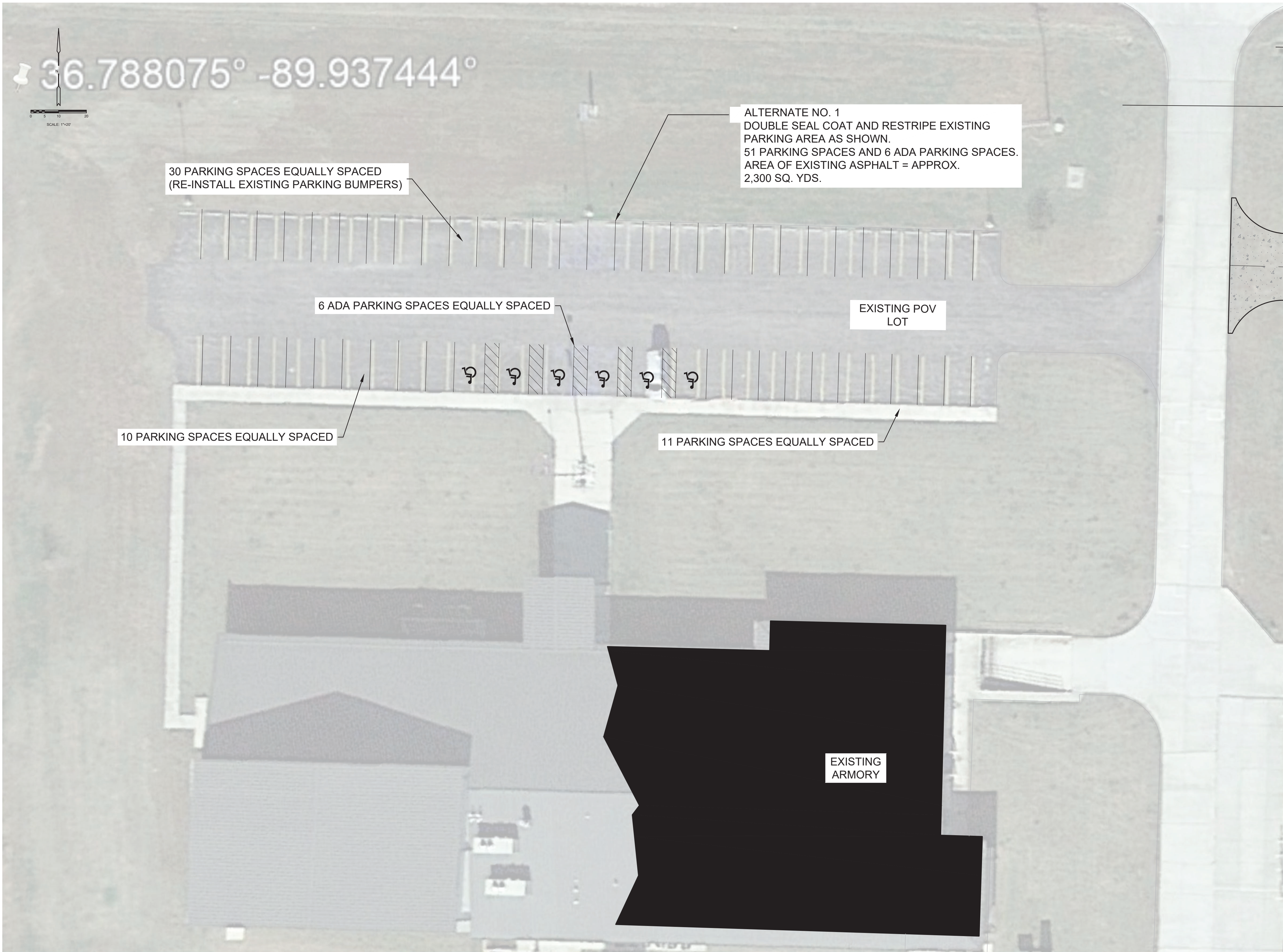
PROJECT # T2237-01
SITE # 6321
FACILITY # 8136321001

ISSUE DATE: 08/11/2022

POV STAKEOUT

C-103

4 OF 6 SHEETS



- GENERAL NOTES:
1. UNDERGROUND FACILITIES, STRUCTURES AND UTILITIES HAVE BEEN PLOTTED FROM AVAILABLE SURVEYS AND RECORDS AND , THEREFORE, LOCATIONS MUST BE CONSIDERED APPROXIMATE ONLY. THERE MAY BE OTHERS, THE EXISTENCE OF WHICH, AT PRESENT, IS NOT KNOWN. VERIFICATION OF THE LOCATIONS OF UNDERGROUND UTILITIES, SHOWN OR NOT SHOWN, WILL BE THE RESPONSIBILITY OF THE CONSTRUCTION CONTRACTOR. THE CONTRACTOR SHALL CONTACT THE MISSOURI ONE CALL SYSTEM AT 1-800-DIG-RITE (1-800-344-7483) PRIOR TO EXCAVATION OR DEMOLITION.
 2. NO GUARANTEE IS GIVEN FOR THE ACCURACY OF QUANTITIES AND DIMENSIONS SHOWN. QUANTITIES AND DIMENSIONS ARE TO BE USED TO FORMULATE A GENERAL IDEA OF THE SIZE OF THE PROJECT. IT IS THE CONTRACTOR'S RESPONSIBILITY TO INSPECT THE SITE AND ESTIMATE QUANTITIES PRIOR TO BIDDING. THE CONTRACTOR SHALL BE RESPONSIBLE FOR ALL WORK SHOWN ON THE DRAWINGS AND AS SPECIFIED IN THE CONTRACT SPECIFICATIONS. NO PAYMENT ADDITIONS OR REDUCTIONS WILL BE MADE FOR INCORRECT QUANTITY APPROXIMATIONS SHOWN WITHIN THESE CONTRACT DRAWINGS.
 3. PAVEMENT MARKINGS SHALL BE APPLIED SHOWN AND AS SPECIFIED IN THE CONTRACT SPECIFICATIONS.
 4. THE CONTRACTOR SHALL PROVIDE MILLING AS REQUIRED, TO INSURE PROPER DRAINAGE AND FLUSH TRANSITIONS.
 5. PHASE SEALCOAT AND STRIPING OPERATIONS TO MINIMIZE DISRUPTION TO TRAFFIC . PHASING SHALL BE DETERMINED AT THE PRE-CONSTRUCTION MEETING.
 6. PROJECT LOCATION:
IKE SKELTON TRAINING SITE
2302 MILITIA DRIVE
JEFFERSON CITY, MO. 65101



OFFICE OF THE
ADJUTANT GENERAL

MISSOURI NATIONAL GUARD
FACILITIES DIVISION



DATE: 08/15/2022 MITCHELL L. STROTHER
PROFESSIONAL ENGINEER - E-024556

OFFICE OF
ADMINISTRATION

DIVISION OF FACILITIES
MANAGEMENT, DESIGN
AND CONSTRUCTION

EXPAND PARKING
READINESS CENTER

DEXTER, MISSOURI

PROJECT # T2237-01
SITE # 6321
FACILITY # 8136321001

REVISION: 1 _____
DATE: 2 _____
REVISION: 3 _____
DATE: 4 _____
REVISION: 5 _____
DATE: 6 _____

ISSUE DATE: 08/11/2022

CAD DWG FILE:
DEXTER NEW POV.dwg
DRAWN BY: VMR
CHECKED BY: MLS
DESIGNED BY: MLS

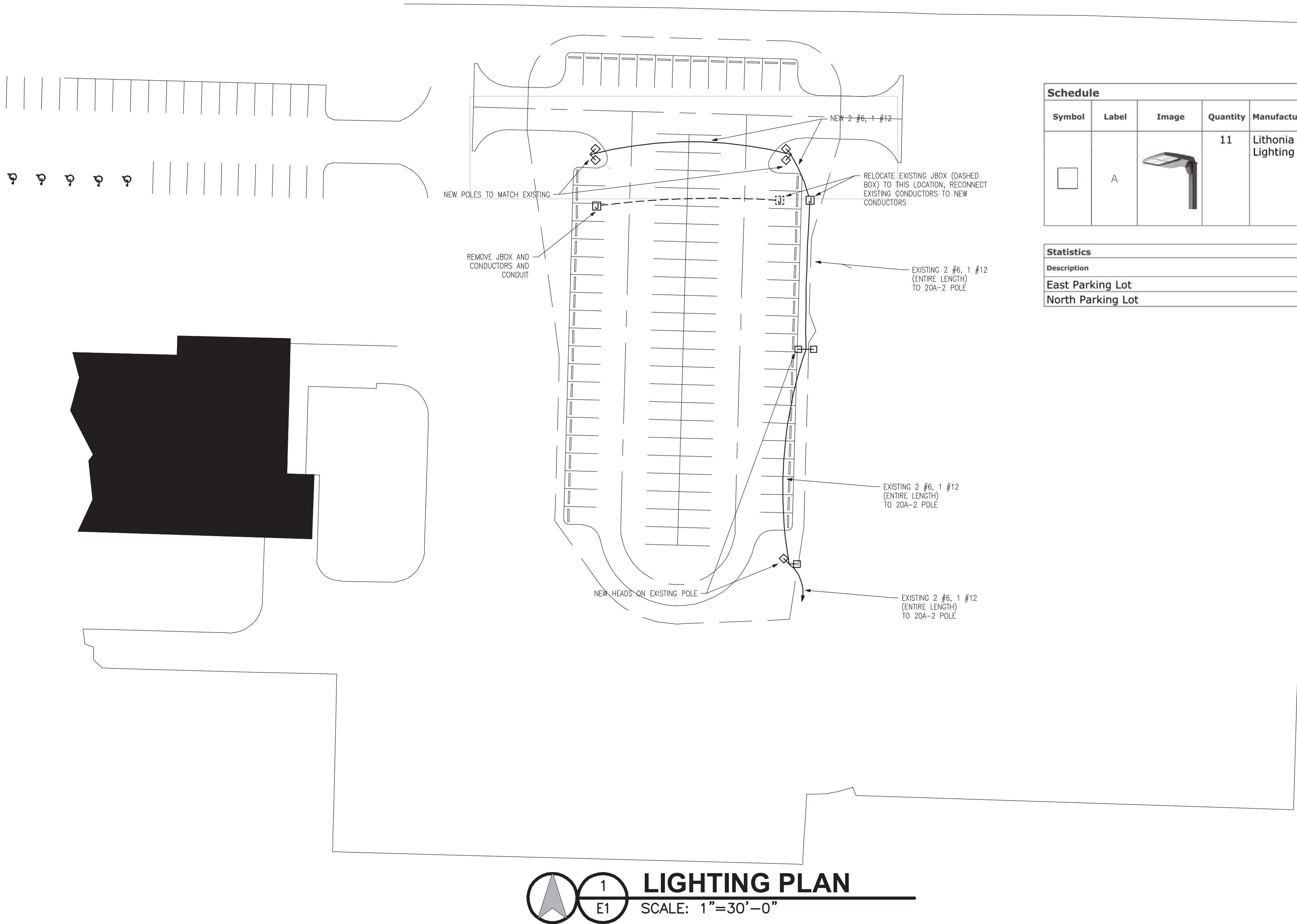
SHEET TITLE:
ALTERNATE 1



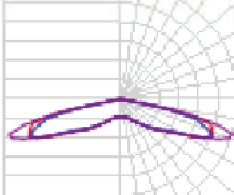
SHEET NUMBER:

C-104

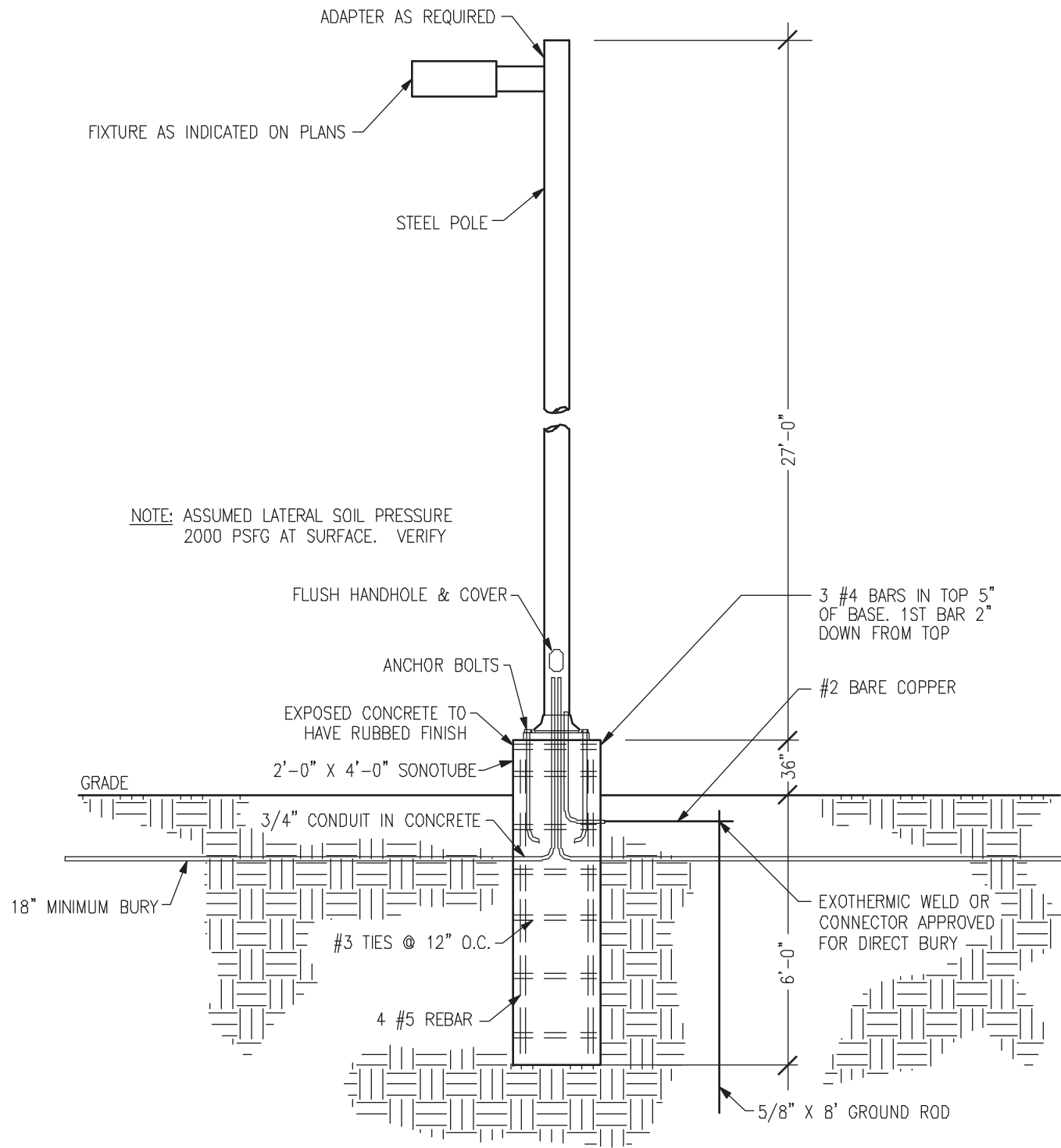
5 OF 6 SHEETS

T:\job\2222219\22219.dwg, 8/15/2022 8:24:25 AM, EhanR



Schedule									
Symbol	Label	Image	Quantity	Manufacturer	Catalog Number	Description	Lumens Per Lamp	Wattage	Plot
	A		11	Lithonia Lighting	RSX4 LED P6 40K R5	RSX Area Luminaire Size 4 P6 Lumen Package 4000K CCT Type R5 Distribution	70395	545.6631	 Max: 26896cd

Statistics						
Description	Symbol	Avg	Max	Min	Max/Min	Avg/Min
East Parking Lot	+	3.2 fc	6.7 fc	0.5 fc	13.4:1	6.4:1
North Parking Lot	+	3.8 fc	6.2 fc	1.1 fc	5.6:1	3.5:1



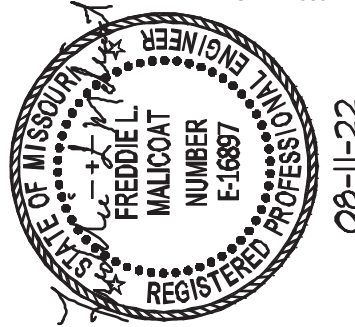
2 LIGHT POLE BASE DETAIL
E1 NO SCALE



OFFICE OF THE
ADJUTANT GENERAL

MISSOURI NATIONAL GUARD
FACILITIES DIVISION

FREDDIE L. MALICOAT - ENGINEER
MO# E-16897



OFFICE OF
ADMINISTRATION

DIVISION OF FACILITIES
MANAGEMENT, DESIGN
AND CONSTRUCTION

READINESS CENTER
EXPAND PARKING

DEXTER, MISSOURI

PROJECT # T2237-01
SITE # 6321
FACILITY # 8136321001

REVISION: _____
DATE: _____
REVISION: _____
DATE: _____
REVISION: _____
DATE: _____
ISSUE DATE: 08/11/2022

CAD DWG FILE:
22219.dwg
DRAWN BY: VMR
CHECKED BY: FLM
DESIGNED BY: FLM

SHEET TITLE:
LIGHTING PLAN

SHEET NUMBER:
E1

6 OF 6 SHEETS