

ADDENDUM NO. 01

TO: PLANS AND SPECIFICATIONS FOR STATE OF MISSOURI

Renovate Interior & Exterior
Anderson Readiness Center
Anderson, Missouri
PROJECT NO.: T2421-01

Bid Opening Date: 1:30 PM, Thursday, April 30, 2026 (Unchanged)

Bidders are hereby informed that the construction Plans and/or Specifications are modified as follows:

SPECIFICATION CHANGES:

1. Section 102216 – Solid Plastic HDPE Toilet Partitions
 - a. ADD 2.02.A.g as follows:
 - g. Hiny Hiders Toilet Partitions
2. Section 105113 – Metal Lockers

REMOVE and REPLACE Spec in its entirety.
3. Appendix B – Asbestos Inspection Report

ADD inspection report to the Appendix.

DRAWINGS CHANGES:

1. Sheet A-110 – See Attached revised sheet A-110
 - a. REVISE locker width and quantity.

GENERAL COMMENTS:

1. The Pre-Bid Meeting was held April 15, 2026 followed by a walk-through of the site. The Pre-Bid Meeting sign-in sheet is attached.
2. Bidders needing additional site inspection should contact Blane O'Bannon at (417) 312-4693 to schedule a time.
3. Please contact Mandy Roberson, Contract Specialist, at (573) 690-9411 or Mandy.Roberson@oa.mo.gov, for questions about bidding procedures and MBE\WBE\SDVE goals and submittal requirements.
4. The deadline for technical questions is Noon (12PM) on April 22, 2026.
5. Changes to, or clarification of, the bid documents are only made as issued in the addenda.
6. All correspondence with respect to this project must include the State of Missouri project number as indicated above.

7. Current Planholders list available online at:
<https://www.oafmdcplanroom.com/projects/3254/plan-holders/t2421-01-renovate-interior-exterior-anderson-readiness-center> Prospective Bidders contact American Document Solutions, 1400 Forum Blvd Suite 1C, Columbia MO 65201, 573-446-7768 to order official plans and specifications.
8. **All bids shall be submitted on the bid form without additional terms and conditions, modifications, or stipulations. Each space on the bid form shall be properly filled including a bid amount for the alternates. Failure to do so will result in rejection of the bid.**
9. **MBE/WBE/SDVE participation requirements can be found in DIVISION 00. The MBE/WBE/SDVE participation goals are 10%/10%/3%, respectively. Only certified firms as of the bid opening date can be used to satisfy the MBE/WBE/SDVE participation goals for this project. If a bidder is unable to meet a participation goal, a Good Faith Effort Determination Form must be completed. Failure to complete this process will result in rejection of the bid.**

ATTACHMENTS:

- A. Pre-Bid Meeting Sign-In Sheet (2 Pages)
- B. Section 105113 – Metal Lockers (9 Pages)
- C. Sheet A-110 (1 Page)
- D. Appendix B – Asbestos Inspection Report (36 Pages)

END ADDENDUM 01

ATTENDANCE

Meeting Description: Renovate Interior and Exterior

Project #: T2421-01

Location: ANDERSON READINESS CENTER

Date: 4.15.2026

Time: 11 AM

Name/Title	Organization	MBE/WBE SDVE Status	Phone Number	Email Address
Ryan Abbott	OA-FMDC		(573) 298-1967	Ryan.Abbott@oa.mo.gov
David Burkett	OA-FMDC		(573) 644-2442	david.burkett@oa.mo.gov
Jeremy Newton	MONG		573-308-6894	jeremy.j.newton.nfg@army.mil
Matt Roark	ARSI, Inc Asbestos Abate		573-896-2222	MATTROARK@arsi-mo.com
Mike Kramer	Kramer & Company Mechanical		479-657-3204	mike@kramerandco.com
Ben DeMass	ANDERSON & SONS CONTRACTORS LLC	SDVE/MBE WBE-1	417-719-8591	dcm.llc.project@gmail.com
Patrick Capron	Branco Enterprises		417-451-5250	Estimating@Branco.com

ATTENDANCE

Meeting Description: Renovate Interior and Exterior

Project #: T2421-01 Location: ANDERSON READINESS CENTER

Date: 4.15.2026 Time: 11 AM

Name/Title	Organization	MBE/WBE SDVE Status	Phone Number	Email Address
Colton	CSG		417-451-5743	estimating@marionllc.net
Jon Dodd	BKD Design Collective		417-890-5543 x103	jdodde@bkddc.com
Matthew Wilson	1241ST TC		417-354-4117	matthew.d.wilson108.Mil@army.mil
Blane O'Bannan	1241ST TC		417-312-4693	blane.h.obannan.mil@army.mil
Cody Ritter	BASE Construction		417-751-2780 417-880-7463	cody@base-cm.com

SECTION 105113 - METAL LOCKERS

PART 1 - GENERAL

1.01 RELATED DOCUMENTS

- A. Drawings and general provisions of the Contract, including General and Supplementary Conditions and Division 01 Specification Sections, apply to this Section.

1.02 SUMMARY

- A. Section Includes:
 - 1. Heavy Duty Metal Gear Lockers (Double Tier): LKR-1.
 - 2. Standard Duty Metal Lockers (Double Tier): LKR-2.
 - 3. Locker Benches.

1.02 REFERENCES

- A. ADAAG - Americans with Disabilities Act, Accessibility Guidelines.

1.03 SUBMITTALS

- A. Product Data: For each type of product indicated. Include construction details, material descriptions, dimensions of individual components and profiles, and finishes for each type of metal locker and bench.
- B. Shop Drawings: For metal lockers. Include plans, elevations, sections, details, and attachments to other work.
 - 1. Show locker trim and accessories.
 - 2. Include locker identification system and numbering sequence.
- C. Samples for Initial Selection/Verification: For units with factory-applied color finishes. For metal lockers and locker benches, in manufacturer's standard sizes.
- D. Maintenance Data: For adjusting, repairing, and replacing locker doors and latching mechanisms to include in maintenance manuals.
- E. Warranty: Sample of special warranty.

1.04 QUALITY ASSURANCE

- A. Installer Qualifications: Manufacturer's authorized representative who is trained and approved for installation of units required for this Project.
- B. Source Limitations: Obtain metal lockers, locker benches, and accessories from single source from single manufacturer.
- C. Regulatory Requirements: Where metal lockers and benches are indicated to comply with accessibility requirements, comply with the U.S. Architectural & Transportation Barriers Compliance Board's "Americans with Disabilities Act (ADA) and Architectural Barriers Act (ABA) Accessibility Guidelines for Buildings and Facilities" and ICC/ANSI A117.1.

1.05 DELIVERY, STORAGE, AND HANDLING

- A. Do not deliver metal lockers until spaces to receive them are clean, dry, and ready for their installation.

1.06 PROJECT CONDITIONS

- A. Field Measurements: Verify actual dimensions of recessed openings by field measurements before fabrication.

1.07 COORDINATION

- A. Coordinate sizes and locations of concrete masonry bases for metal lockers.
- B. Coordinate sizes and locations of framing, blocking, furring, reinforcements, and other related units of work specified in other Sections to ensure that metal lockers can be supported and installed as indicated.

1.08 WARRANTY

- A. Special Warranty: Manufacturer's standard form in which manufacturer agrees to repair or replace components of metal lockers that fail in materials or workmanship, excluding finish, within specified warranty period.
 - 1. Failures include, but are not limited to, the following:
 - a. Structural failures.
 - b. Faulty operation of latches and other door hardware.
 - 2. Damage from deliberate destruction and vandalism is excluded.
 - 3. Warranty Period for Knocked-Down Metal Lockers: **5 years** from date of Substantial Completion.

1.09 EXTRA MATERIALS

- A. Furnish extra materials that match products installed and that are packaged with protective covering for storage and identified with labels describing contents.
 - 1. Full-size units of the following metal locker hardware items equal to **10** percent of amount installed for each type and finish installed, but no fewer than **five** units:
 - a. Identification plates.
 - b. Hooks.

PART 2 - PRODUCTS

2.01 MANUFACTURERS

- A. LKR-2 Basis of Design Manufacturer: **Superior Storage Systems**, which is located at: 152 Downing Drive Chesapeake, VA 23322; Email: dperry@superiorstoragesystems.com.
 - 1. Alternative Manufacturer's that may be able to 'custom fabricate' an equivalent to the specified basis of design locker units subject to each manufacturer's capability:
 - a. Global Industrial; Global Equipment Company, Inc.
 - b. Republic Storage Products.
 - c. LockersMFG

2.03 MATERIALS

- A. Steel: Prime grade mild cold-rolled sheet steel free from surface imperfection, capable of taking a high-grade enamel finish and in compliance with ASTM A1008.
- B. Steel: Sheet steel components shall be fabricated using zinc-coated steel free from surface imperfection, capable of taking a high-grade enamel finish and in compliance with ASTM A879.
- C. Expanded Metal: ASTM F 1267, Type II (flattened), Class I, 3/4-inch steel mesh, with at least 70 percent open area.
- D. Extruded Aluminum: ASTM B 221, alloy and temper recommended by aluminum producer and manufacturer for type of use and finish indicated.
- E. Steel Tube: ASTM A 500, cold rolled.
- F. Fasteners: Zinc or nickel-plated steel, slotless-type, exposed bolt heads; with self-locking nuts or lock washers for nuts on moving parts.
- G. Anchors: Material, type, and size required for secure anchorage to each substrate.
 - 1. Provide nonferrous-metal or hot-dip galvanized anchors and inserts on inside face of exterior walls, and elsewhere as indicated, for corrosion resistance.
 - 2. Provide toothed-steel or lead expansion sleeves for drilled-in-place anchors.

2.04 HEAVY DUTY METAL GEAR LOCKERS (LKR-1)

- A. Basis-of-Design Product: Heavy Duty Gear Lockers, all locker body components made of cold rolled steel specially formed for added strength and rigidity and to ensure tight joints at fastening points.
 - 1. Gear Lockers with Doors: *Superior Storage Systems, TA-50 Lockers.*
 - 2. Or subject to compliance with the requirements, a comparable product by one of the following manufacturers:
 - a. ASI Storage Solutions Inc.
 - b. Cisco-Eagle.
 - c. General Storage Systems Ltd.
 - d. Hadrian Manufacturing Inc.
 - e. Lyon Workspace Products, LLC.
 - f. Penco Products.
 - g. Republic Storage Products.
 - h. Strong Hold.
 - i. Tenssco Corp.
- B. Locker Arrangement: *Two (Double) Tier Style.*
- C. Locker Sizes:
 - 1. 36" wide x 24" deep x 78" tall; *See Drawings also.*

- D. Locker Construction: Steel specially formed for added strength and rigidity and to ensure tight joints at fastening points.
1. Back, Sides, Bottoms, Tops, Doors and Shelves:
 - a. 16 gauge cold rolled steel.
 - b. Door & Side Ventilation: diamond-shaped perforations.
 2. Side Handle: Solid 14 gauge steel.
 3. Base Leveler Plate:
 - a. 13 gauge steel.
 4. Frame raised off floor with four adjustable leveling feet.
 5. Locker Doors: One piece 16 ga cold rolled steel.
 6. Locking Rods: One .5" x .375" full length locking rod is installed on the right hand door. When in use, the locking bar will engage independently into the top and the bottom of the frame. The lock rods are concealed. The locking rods are activated by the thumb lock.
 7. Padlock Hasp: A 14 GA padlock hasp is welded to the frame and includes a swing arm hasp to render the handle inoperative when the padlock is in use.
 8. Back Panel: 16 GA back panel complete with two stiffening bars and include three wall mount holes in each for securing the TA-50 locker to the wall or back-to-back. The back panel shall also include a set of vertical lance holes, to accept various accessories (lock box, storage boxes, & multiple accessories etc.).
 9. Sides: The sides shall come complete with side-to-side ganging holes. A carry handle shall be integrated into each side of the locker.
 10. Interior Components: The interior shall be outfitted with optional full width adjustable shelf and coat rod.
 11. Continuous Zee Base: Fabricated from manufacturer's standard thickness, but not less than 0.060-inch (1.52-mm)] nominal-thickness steel sheet. Sloped tops not required.
 - a. Height: 4 inches (102 mm).
- E. Finish: Hybrid Polyester powder coat paint finish electrostatically applied and properly cured to manufacturer's specifications for optimum performance. Finishes containing volatile organic compounds and subject to out-gassing are not acceptable. Locker exterior and interior shall be painted the same color.
1. Powder Coat Plus - Dry Thickness: 2 to 2.2 mils (0.05 to 0.055 mm).
 2. Color(s): *As selected from a full line of manufacturer's standard colors.*

2.01 STANDARD METAL LOCKERS (LKR-2)

- A. Products: Subject to compliance with requirements, available products that may be incorporated into the Work include, but are not limited to, the following:
1. ASI Storage Solutions Inc.; Traditional Collection.
 2. DeBourgh Mfg. Co.; Worley Lockers.
 3. Hadrian Manufacturing Inc.; Emperor Lockers.
 4. List Industries Inc.; Classic Line of Superior KD, Standard Quiet KD Lockers.
 5. Lyon Workspace Products, LLC; Standard Lockers.
 6. Penco Products, Inc.; Vanguard Lockers.
 7. Republic Storage Systems Company; Standard Lockers.
 8. Shanahan's Manufacturing Limited; Deluxe Series Lockers.

9. Tennsco Corp.; Tennsco Lockers.
- B. Locker Arrangement: Double tier; see design intent on Drawings.
- C. Locker Size: 12" wide x 18" deep x 36" tall; double-tier 72" tall overall plus 4" base.
- D. Material: Cold-rolled steel sheet.
- E. Body: Assembled by riveting or bolting body components together. Fabricate from unperforated steel sheet as follows:
1. Tops, Bottoms, and Intermediate Dividers: 0.024-inch (0.61-mm) nominal thickness, with single bend at sides.
 2. Backs and Sides: 0.024-inch (0.61-mm) nominal thickness, with full-height, double-flanged connections.
 3. Shelves: 0.024-inch (0.61-mm) nominal thickness, with double bend at front and single bend at sides and back.
- F. Frames: Channel formed; fabricated from 0.060-inch (1.52-mm) nominal-thickness steel sheet; lapped and factory welded at corners; with top and bottom main frames factory welded into vertical main frames. Form continuous, integral door strike full height on vertical main frames.
1. Cross Frames between Tiers: Channel formed and fabricated from same material as main frames; welded to vertical main frames.
 2. Frame Vents: Fabricate face frames with vents.
- G. Doors: One piece; fabricated from 0.060-inch (1.52-mm) nominal-thickness steel sheet; formed into channel shape with double bend at vertical edges and with right-angle single bend at horizontal edges.
1. Doors less than 12 inches (305 mm) wide may be fabricated from 0.048-inch (1.21-mm) nominal-thickness steel sheet.
 2. Doors for box lockers less than 15 inches (381 mm) wide may be fabricated from 0.048-inch (1.21-mm) nominal-thickness steel sheet.
 3. Reinforcement: Manufacturer's standard reinforcing angles, channels, or stiffeners for doors more than 15 inches (381 mm) wide; welded to inner face of doors.
 4. Stiffeners: Manufacturer's standard full-height stiffener fabricated from 0.048-inch (1.21-mm) nominal-thickness steel sheet; welded to inner face of doors.
 5. Sound-Dampening Panels: Manufacturer's standard, designed to stiffen doors and reduce sound levels when doors are closed, of die-formed metal with full perimeter flange and sound-dampening material; welded to inner face of doors.
 6. Door Style: Vented panel
- H. Hinges: Welded to door and attached to door frame with no fewer than two factory-installed rivets per hinge that are completely concealed and tamper resistant when door is closed; fabricated to swing 180 degrees.
1. Knuckle Hinges: Steel, full loop, five or seven knuckles, tight pin; minimum 2 inches (51 mm) high. Provide no fewer than three hinges for each door more than 42 inches (1067 mm) high.
 2. Continuous Hinges: Manufacturer's standard, steel, full height.

- I. Projecting Door Handle and Latch: Finger-lift latch control designed for use with either built-in combination locks or padlocks; positive automatic latching, chromium plated; pry and vandal resistant.
 - 1. Latch Hooks: Equip doors 48 inches (1219 mm) and higher with three latch hooks and doors less than 48 inches (1219 mm) high with two latch hooks; fabricated from 0.105-inch (2.66-mm) nominal-thickness steel sheet; welded or riveted to full-height door strikes; with resilient silencer on each latch hook.
 - 2. Latching Mechanism: Manufacturer's standard, rattle-free latching mechanism and moving components isolated to prevent metal-to-metal contact, and incorporating a prelocking device that allows locker door to be locked while door is open and then closed without unlocking or damaging lock or latching mechanism.
- J. Combination Padlocks: Provided by Owner.
- K. Accessories:
 - 1. Continuous Zee Base: Fabricated from manufacturer's standard thickness, but not less than 0.060-inch (1.52-mm)] nominal-thickness steel sheet.
 - a. Height: 4 inches (102 mm).
 - 2. Recess Trim: Fabricated from 0.048-inch (1.21-mm) nominal-thickness steel sheet.
 - 3. Filler Panels: Fabricated from manufacturer's standard thickness, but not less than 0.036-inch (0.91-mm)] nominal-thickness steel sheet.
- L. Finish: Manufacturer's standard powder coat.

2.02 LOCKER BENCHES

- A. Provide bench units with overall assembly height of 17-1/2 inches (445 mm).
- B. Bench Tops: Manufacturer's standard one-piece units, with rounded corners and edges.
 - 1. Size: Minimum 12 inches wide by 1-1/4 inches thick except provide minimum 20-inch-wide tops where accessible benches are indicated.
 - 2. Laminated clear hardwood with one coat of clear sealer on all surfaces and one coat of clear lacquer on top and sides.
- C. Fixed Pedestals: Manufacturer's standard supports, with predrilled fastener holes for attaching bench top and anchoring to floor, complete with fasteners and anchors, and as follows:
 - 1. Tubular Steel: 1-1/4-inch minimum diameter steel tubing threaded on both ends, with standard pipe flange at top and bell-shaped cast-iron base; with baked-enamel or powder-coat finish; anchored with exposed fasteners.
 - a. Color: As selected by Architect from manufacturer's full range.

2.03 Color(s): As selected by Architect from manufacturer's full range.

2.04 FABRICATION

- A. Fabricate metal lockers square, rigid, and without warp and with metal faces flat and free of dents or distortion. Make exposed metal edges safe to touch and free of sharp edges and burrs.
 - 1. Form body panels, doors, shelves, and accessories from one-piece steel sheet unless otherwise indicated.
 - 2. Provide fasteners, filler plates, supports, clips, and closures as required for complete installation.
- B. Fabricate each metal locker with an individual door and frame; individual top, bottom, and back; and common intermediate uprights separating compartments. Factory weld frame members of each metal locker together to form a rigid, one-piece assembly.
- C. Knocked-Down Construction: Fabricate metal lockers using nuts, bolts, screws, or rivets for nominal assembly at Project site.
- D. Hooks: Manufacturer's standard ball-pointed type, aluminum or steel; zinc plated.
- E. Identification Plates: Manufacturer's standard, etched, embossed, or stamped *aluminum* plates, with numbers and letters at least 3/8 inch high.
- F. Recess Trim: Fabricated with minimum 2-1/2-inch face width and in lengths as long as practical; finished to match lockers.
- G. Filler Panels: Fabricated in an unequal leg angle shape; finished to match lockers. Provide slip-joint filler angle formed to receive filler panel.
- H. Boxed End Panels: Fabricated with 1-inch- wide edge dimension, and designed for concealing fasteners and holes at exposed ends of non-recessed metal lockers; finished to match lockers.
 - 1. Provide one-piece panels for double-row (back-to-back) locker ends.
- I. Finished End Panels: Designed for concealing unused penetrations and fasteners, except for perimeter fasteners, at exposed ends of non-recessed lockers; finished to match lockers.
 - 1. Provide one-piece panels for double-row (back-to-back) locker ends.
- J. Zee Bases for Knock-Down Lockers: 14 gauge, steel flanged outward at top for support of lockers, flanged inward at bottom for anchoring to floor.
 - 1. Height: 4 inches (101 mm).

2.05 STEEL SHEET FINISHES

- A. Factory finish steel surfaces and accessories except stainless-steel and chrome-plated surfaces.
- B. Powder-Coat Finish: Immediately after cleaning and pretreating, electrostatically apply manufacturer's standard, baked-polymer, thermosetting powder finish. Comply with resin manufacturer's written instructions for application, baking, and minimum dry film thickness.

PART 3 - EXECUTION

3.01 EXAMINATION

- A. Examine walls, floors, and support bases, with Installer present, for compliance with requirements for installation tolerances and other conditions affecting performance of the Work.
- B. Proceed with installation only after unsatisfactory conditions have been corrected.

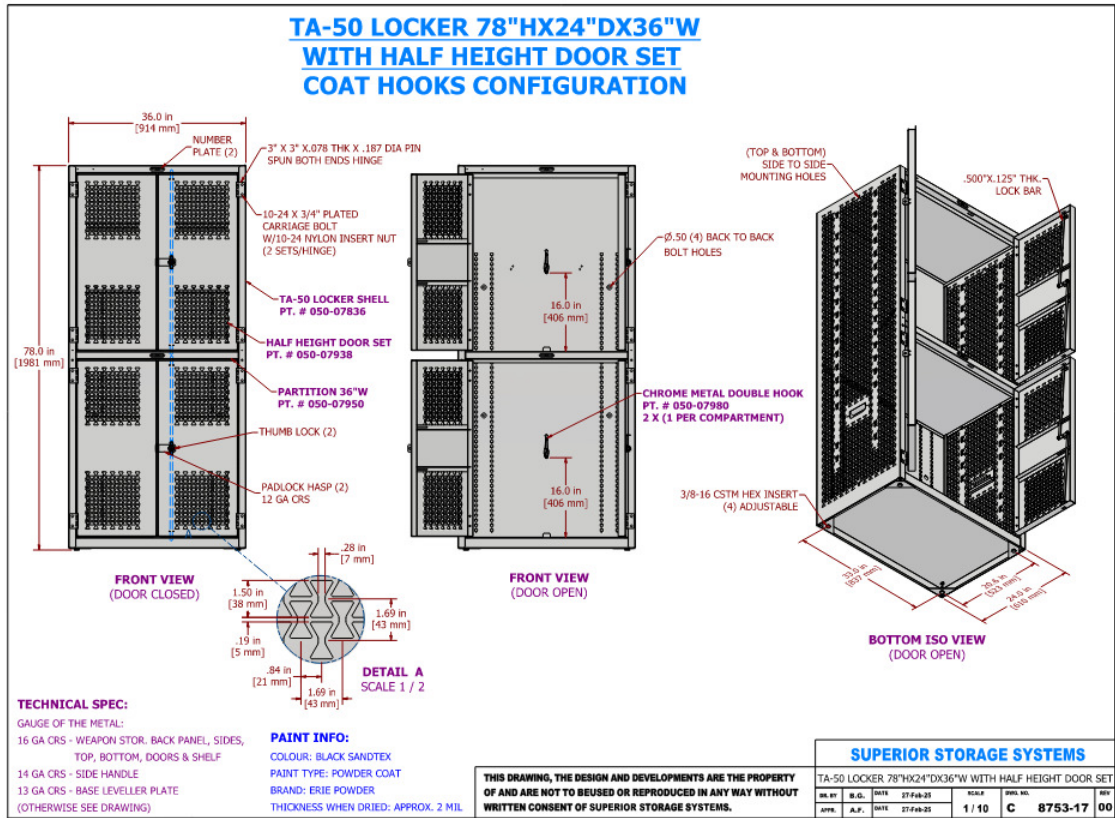
3.02 INSTALLATION

- A. General: Install level, plumb, and true; shim as required, using concealed shims.
 - 1. Anchor locker runs at ends and at intervals recommended by manufacturer, but not more than 36 inches o.c. Using concealed fasteners, install anchors through backup reinforcing plates, channels, or blocking as required to prevent metal distortion.
 - 2. Anchor single rows of metal lockers to walls near top and bottom of lockers and to base.
- B. Knocked-Down Metal Lockers: Assemble with standard fasteners, with no exposed fasteners on door faces or face frames.
- C. Equipment and Accessories: Fit exposed connections of trim, fillers, and closures accurately together to form tight, hairline joints, with concealed fasteners and splice plates.
 - 1. Attach hooks with at least two fasteners.
 - 2. Attach door locks on doors using security-type fasteners.
 - 3. Identification Plates: Identify metal lockers with identification indicated on Drawings.
 - a. Attach plates to each locker door, near top, centered, with aluminum rivets.
 - b. Attach plates to upper shelf of each open-front metal locker, centered, with a least two aluminum rivets.
 - 4. Attach recess trim to recessed metal lockers with concealed clips.
 - 5. Attach filler panels with concealed fasteners.
 - 6. Attach boxed end panels with concealed fasteners to conceal exposed ends of non-recessed metal lockers.
 - 7. Attach finished end panels with fasteners only at perimeter to conceal exposed ends of non-recessed metal lockers.

3.03 ADJUSTING, CLEANING, AND PROTECTION

- A. Clean, lubricate, and adjust hardware. Adjust doors & latches to operate easily without binding.
- B. Protect metal lockers from damage, abuse, dust, dirt, stain, or paint. Do not permit use during construction.
- C. Touch up marred finishes, or replace metal lockers that cannot be restored to factory-finished appearance. Use only materials and procedures recommended or furnished by locker manufacturer.

3.04 Shop Drawing for Reference (LKR-1).



END OF SECTION

EQUIPMENT SCHEDULE

NO.	DESCRIPTION	MANUFACTURER	MODEL NO.	REMARKS
FE	FIRE EXTINGUISHER (STND. BRACKET MOUNTING ONLY)	RUSOH, ELIMINATOR (OR EQUAL, SELF-SERVICE, RELOADABLE, MULTI-PURPOSE DRY CHEMICAL)	EQUVALENT TO: RUSOH ELIMINATOR 3-A-40-B-C, MODEL 0930001, SELF-SERVICE, RELOADABLE, MULTI-PURPOSE DRY CHEMICAL FIRE EXTINGUISHER W/ STANDARD SURFACE MOUNTING BRACKET. FINAL LOCATION MAY BE DIRECTED IN FIELD.	48" A.F.F. TO C LINE OF CABINET SEE DETAIL: 1/G-002
TT	TOILET TISSUE DISPENSER	SUPPLIED BY OWNER, INSTALLED BY CONTRACTOR		
SN	SANITARY NAPKIN DISPENSER	SUPPLIED BY OWNER, INSTALLED BY CONTRACTOR		
PTD	PAPER TOWEL DISPENSER	SUPPLIED BY OWNER, INSTALLED BY CONTRACTOR		
SD	SOAP DISPENSER	SUPPLIED BY OWNER, INSTALLED BY CONTRACTOR		
M	24" X 36" FRAMED MIRROR UNIT	EQUAL TO: BOBRICK, ASI OR BRADLEY CORP.	BOBRICK: B-290 2436; BRADLEY: 780 2436 ASI: 0620-2436.	SEE SHEET G1-0 FOR MOUNTING REQ.
TH	TOWEL HOOK	EQUAL TO: BOBRICK, ASI OR BRADLEY CORP.	BOBRICK: B-9542 BRADLEY: 981-110000 SATIN STAINLESS ASI: 7308 SATIN STAINLESS	SEE SHEET G1-0 FOR MOUNTING REQ.
SCR	SHOWER CURTAIN & ROD	EQUAL TO: BOBRICK, ASI OR BRADLEY CORP.	BOBRICK: B-6107X36" / 60" (ADA) & 204-2 / 204-3 (ADA) & 204-1 BRADLEY: 953 36" / 60" (ADA) & 9533 42" / 60"W (ADA) X 78" & 540 ASI: MODEL 1204 36" / 60" (ADA) W/ 1204-1 S.S. FLANGES & SP1200-V 42" / 60"W (ADA) X 84"L	SEE SHEET G1-0 FOR MOUNTING REQ., CUT ROD LENGTH IN FIELD TO MATCH FIELD VERIFIED DIMENSIONS OF SHOWER & CHANGING COMPARTMENTS
GB1	36" LONG H/C GRAB BAR	EQUAL TO: BOBRICK, ASI OR BRADLEY CORP.	BOBRICK: B6806X36" BRADLEY: 812-001-36" ASI: 3801-36	SEE SHEET G1-0 FOR MOUNTING REQ.
GB2	42" LONG H/C GRAB BAR	EQUAL TO: BOBRICK, ASI OR BRADLEY CORP.	BOBRICK: B6806X42" BRADLEY: 812-001-42" ASI: 3801-42	SEE SHEET G1-0 FOR MOUNTING REQ.
GB3	18" LONG H/C GRAB BAR	EQUAL TO: BOBRICK, ASI OR BRADLEY CORP.	BOBRICK: B6806X18" BRADLEY: 812-001-18" ASI: 3801-18	SEE SHEET G1-0 FOR MOUNTING REQ.
SCB	ADA TRANSFER-TYPE SHOWER GRAB BAR SET	EQUAL TO: BOBRICK, ASI, BRADLEY CORP. OR MOEN	BOBRICK: B6861 + B6806X18 VERTICAL ASI: 3874 + 3801-18" VERTICAL MOEN: 8892-16X32 + 18" VERTICAL	SEE SHEET G1-0 FOR MOUNTING REQ.
SST	ADA TRANSFER-TYPE FOLDING SHOWER SEAT	EQUAL TO: BOBRICK, ASI OR BRADLEY CORP.	BOBRICK: B5191 ASI: 8203-28; BRADLEY: 9562-00	INSTALL PER MANUFACTURERS INSTRUCTIONS

BID ALTERNATE SCHEDULE

REFER TO SPECIFICATIONS SECTION 012300 - ALTERNATES FOR THE BID ALTERNATE SCHEDULE & ADDITIONAL DESCRIPTIONS.

BID ALTERNATE #01:
 REPLACE ALL OFFICE AREA DOOR LEAFS, WITH NEW WOOD DOOR LEAFS TO MATCH EXISTING WOOD DOOR LEAF STAIN COLOR AND LISTED HARDWARE ONLY. DOOR FRAMES TO REMAIN (RE-PAIN)
 DOOR NOS: 101A, 102, 102A, 103, 103A, 104, 105, 106, 113, 114, 115, 126 & 127.

BID ALTERNATE #02:
 PROVIDE NEW LOCKER UNITS AS INDICATED ON PLANS & SPECIFICATIONS. IF THIS ALTERNATE IS ACCEPTED, THE CONTRACTOR WILL PROVIDE (SUPPLY & INSTALL) THE NEW LOCKER UNITS. THE OWNER WILL REMOVE, STORE AND RE-INSTALL THE EXISTING FREESTANDING LOCKER UNITS IF REQUIRED IF THE BID ALTERNATE IS NOT ACCEPTED.

BID ALTERNATE #03:
 PROVIDE ALL NEW SITE WORK INDICATED ON SHEETS C-101, C-200, C-300, C-301, C-400, C-500, AND C-501. ALL NEW EXTERIOR LIGHTING, THE REMOVAL OF THE EXISTING SITE LIGHT POLE SHOWN ON KEYNOTE 2, SHEET E-101, AND KEYNOTE D3 ON SHEET A-010 SHALL BE PART OF THE BASE BID.

GENERAL FLOOR PLAN NOTES

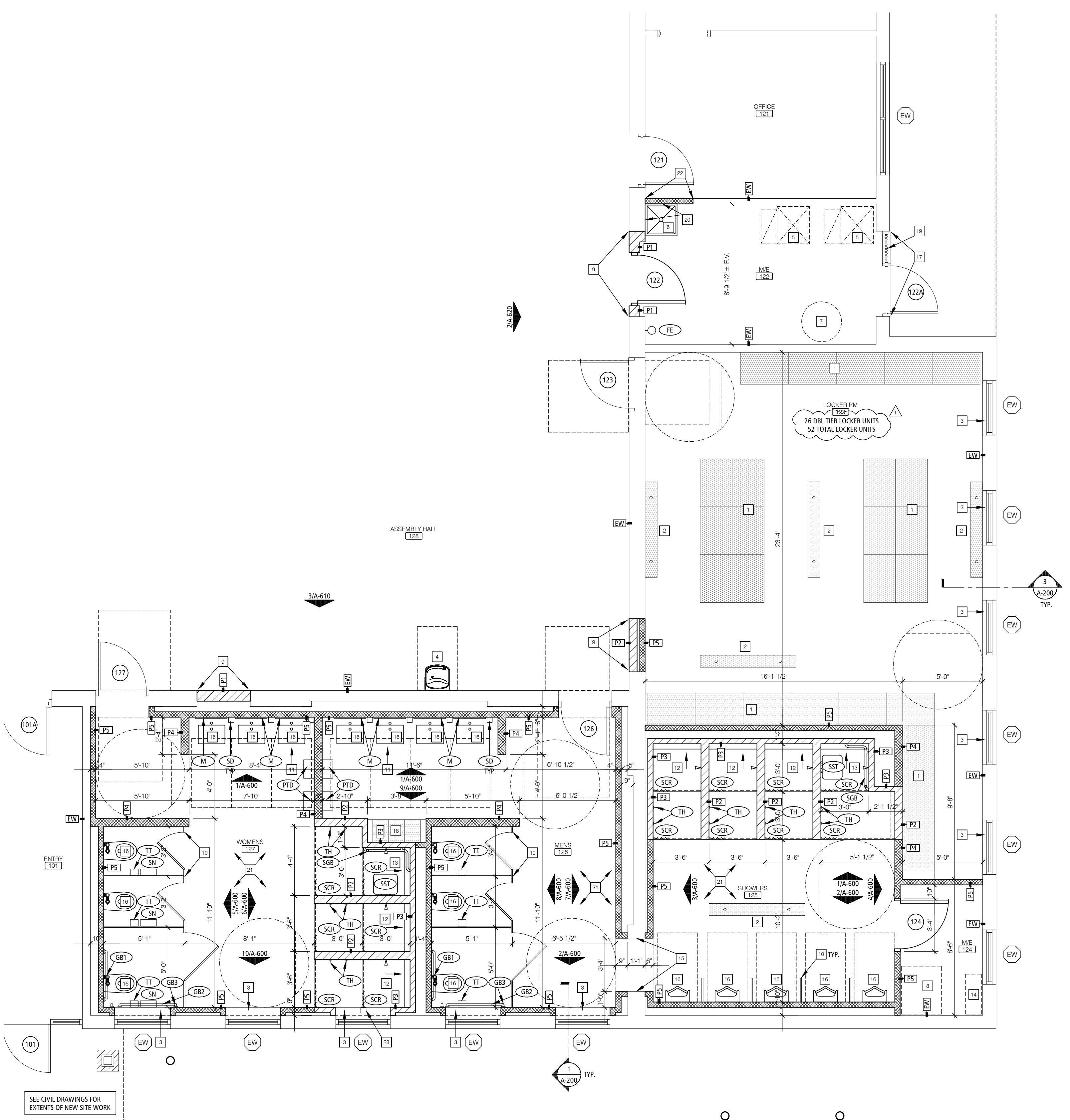
- SEE FLOOR PLAN KEYNOTES SHEET A-100 FOR TYPICAL NOTATION ALL PLANS.
- SEE REF. CEILING PLANS, FLOOR FINISH PLANS, SCHEDULES AND SPECIFICATIONS FOR OTHER FINISH INFORMATION.
- FLOOR PLAN NOTES APPLY TO ALL FLOOR PLANS TYP.
- NOT ALL NOTATION MAY BE USED ON EACH FLOOR - SEE FLOOR PLAN KEYNOTES.
- INTERIOR WALL AND CEILING FINISHES SHALL HAVE A FLAME SPREAD RATING BETWEEN 26-75 AND A SMOKE DEVELOPED RATING BETWEEN 0-450 (CLASS B)

FLOOR PLAN KEYNOTES

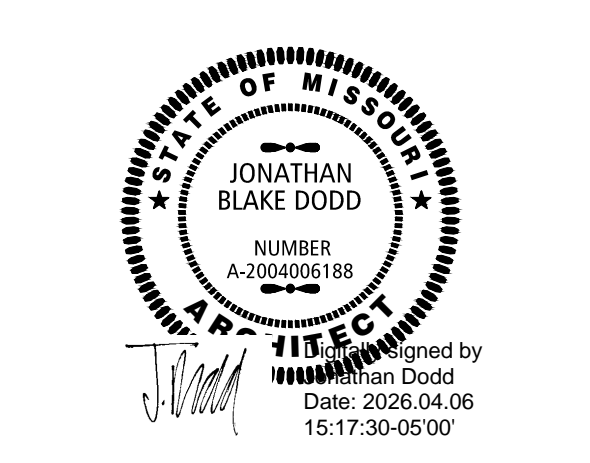
- BID ALTERNATE #02:** 30X24X78 DBL TIER LOCKER UNITS (LKR-1); SEE SPECIFICATIONS. OWNER WILL REMOVE AND REINSTALL EXISTING LOCKER UNITS AS PART OF THE BASE BID WORK.
- FLOOR MOUNTED LOCKER ROOM BENCHES; SEE SPECIFICATIONS.
- WINDOW SILL; SEE FINISH PLANS & SCHEDULES.
- EXISTING DRINKING FOUNTAIN/BOTTLE FILLER TO REMAIN; SEE PLUMBING DRAWINGS FOR ADDITIONAL PIPING INSULATION WORK REQUIRED.
- APPROXIMATE LOCATION OF NEW HVAC UNITS; SEE MECHANICAL PLANS.
- MOP SINK W/ WALL PANELS; SEE PLUMBING PLANS & SPECIFICATIONS.
- APPROXIMATE LOCATION OF NEW HOT WATER HEATER; SEE PLUMBING PLANS.
- APPROXIMATE LOCATION OF NEW WATER FILTRATION SYSTEM; SEE PLUMBING PLANS.
- INFILL EXISTING WALL OPENINGS TO MATCH EXISTING ADJACENT WALL TYPES; SEE WALL PARTITION TYPES ALSO.
- FLOOR MOUNTED / OVERHEAD BRACED HDPE TOILET PARTITIONS & URINAL SCREENS; SEE SPECIFICATIONS.
- NEW CASEWORK UNIT; SEE INTERIOR ELEVATIONS & DETAILS.
- NEW STANDARD SHOWER UNIT; SEE MEP DRAWINGS, INTERIOR ELEVATIONS, EQUIPMENT PLAN & DETAILS.
- NEW ACCESSIBLE SHOWER UNIT; SEE MEP DRAWINGS, INTERIOR ELEVATIONS, EQUIPMENT PLAN & DETAILS.
- APPROXIMATE LOCATION OF NEW BACKFLOW PREVENTER; SEE PLUMBING PLANS.
- PATCH & REPAIR WALL/JAMB AT PASS THRU TO MATCH NEW CMU WALL CONSTRUCTION
- PLUMBING FIXTURE LOCATION; SEE PLUMBING DRAWINGS
- REMOVE GLAZING FROM HM DOOR LITES AND REPLACE WITH 1" INSULATED METAL PANELS; SEE SPECS & DOOR TYPES
- 12 X 18 X 72 DBL TIER LOCKER UNITS (LKR-2); SEE SPECIFICATIONS.
- SIDELITE GLAZING TO BE REMOVED & REPLACED WITH INSULATED METAL PANEL; SEE DOOR TYPES.
- INSTALL 48" HIGH S.S. WALL GUARDS EACH WALL AT MOP SINK LOCATION.
- SAWCUT & REMOVE ALL REQUIRED PORTIONS OF THE EXISTING CONCRETE FLOOR SLAB THIS ROOM AREA AS REQUIRED FOR ANY NEW PLUMBING & ELECTRICAL INSTALLATIONS (UNDERSLAB WASTE PIPING, WATER PIPING OR UNDERGROUND ELECTRICAL) INDICATED. COORD. SAWCUTTING AND REMOVAL REQUIRED WITH PLUMBING CONTRACTOR. SEE MEP DRAWINGS FOR DESIGN INTENT. PROVIDE A NEW 4000 PSI, 4" THICK CONCRETE SLAB W/ W/M 606-W1-4XW1, 4 OVER 10 MIL SEALED POLYETHYLENE VAPOR BARRIER AT ALL FLOOR SLAB AREAS REQUIRED TO BE REMOVED. DOWEL NEW SLAB INTO EXISTING SLAB AREAS W/ #3S AT 24" O.C. TYPICAL.
- REMOVE EXISTING DRYWALL AS REQUIRED FOR NEW WATER LINE INSTALLATION AT MOP SINK & PATCH EXISTING WALL WITH NEW 5/8" TYPE 'X' M/MR GYP BD AND FINISH TO MATCH EXISTING WALL.
- PROVIDE A CUSTOM 1/8" THICK MIN. STAINLESS STEEL SHOWER ROD SUPPORT BRACKET AT WINDOW HEAD LOCATION TO SUPPORT SHOWER CURTAIN ROD THIS LOCATION; SEE INTERIOR ELEVATIONS FOR ADDITIONAL INFORMATION.

WALL PARTITION TYPES

- (TYPICAL FOR ALL INDICATED INTERIOR WALL PARTITION CONSTRUCTION)
- EXTERIOR WALL CONSTRUCTION IS DESCRIBED BY BUILDING SECTIONS. EXTERIOR WALL SECTIONS & DETAILS. INTERIOR WALL TYPES ARE DESCRIBED BY THEIR DENOTED WALL TYPES / WALL SECTIONS HEREIN. ANY WALL CONSTRUCTION NOT INDICATED BY SECTION OR KEYED FOR TYPE AND CONSTRUCTION SHALL BE CLARIFIED FOR INTERPRETATION BY THE ARCHITECT PRIOR TO BIDDING. ALL REQUIRED WALL FRAMING INDICATED BY DESIGN INTENT ON FLOOR PLANS WHETHER DESCRIBED BY THE WALL SECTIONS HEREIN SHALL BE PART OF THE CONSTRUCTION OR EQUIVALENT TO WALL PARTITION TYPE: P1.
 - THESE WALL SECTIONS INDICATE PRIMARY WALL TYPE. OVERLAP VENEERS, WANISCOAT, PLASTER, PAINT, WALL COVERINGS AND OTHER VARIANTS AND SPECIAL CONDITIONS ARE INDICATED ON THE FLOOR PLANS, FINISH PLANS, SCHEDULES OR OTHER DETAILS.
 - JOINTS AND PENETRATIONS AT ALL RATED WALLS SHALL BE SEALED AND PROTECTED PER SPECIFICATIONS, U.L. TESTED ASSEMBLIES AND CODE REQUIREMENTS WHETHER INDICATED ON DETAILS OR NOT.
 - ALL WALLS WITH PLUMBING FIXTURES SHALL RECEIVE MOLD, MILDEW & MOISTURE RESISTANT GYPSUM BOARD, UNLESS NOTED OTHERWISE.
 - INTERIOR NON-LOAD BEARING WALLS SHALL BE INSTALLED PER THEIR RESPECTIVE METAL STUD MANUFACTURERS LISTING HEIGHT INFORMATION AND/OR BRACED AT MID-SPAN TO ACCOMMODATE INSTALLATIONS OF GLUGES SPECIFIED. INTERIOR WALL FRAMING TO ACCOMMODATE A LATERAL LOAD OF 5 PSF WITH A DEFLECTION LIMIT OF 1/360.
 - CONTRACTOR SHALL COORDINATE WALL FRAMING ABOVE FINISHED CEILINGS WITH FRAMING, PLUMBING AND HVAC CONTRACTORS. FRAMING CONTRACTOR SHALL PROVIDE ANY NECESSARY ROUGH OPENING FRAMING REQUIRED TO FACILITATE PIPING OR DUCTWORK PENETRATIONS - REFER TO MEP DRAWINGS FOR LOCATIONS OF NEW/EXISTING DUCTS, PIPING, ETC.. SOME WALL FRAMING/BRACING MAY REQUIRE ADJUSTMENT OR RE-LOCATION TO ALLOW FOR DUCT/TYPING ROUTING.
 - REFER TO WALL SECTIONS AND INTERIOR ELEVATIONS FOR DESIGN CRITICAL FRAMING DIMENSIONS @ WALLS W/ WINDOWS & OTHER OPENINGS, TYP.
 - WALL PARTITIONS THAT DO NOT EXTEND TO STRUCTURE ABOVE SHALL BE BRACED W/ 3-5/8", 20 GA METAL STUDS @ 48" O.C. (ALTERNATING DIRECTIONS) TO STRUCTURE ABOVE (TYPICAL). IF HEIGHT CONDITIONS DO NOT PERMIT BRACING TO STRUCTURE ABOVE, THEN WALLS SHALL BE CROSS-BRACED ABOVE CEILINGS AT TOP PLATE W/ FLAT 3-5/8" 20 GA METAL STUDS AT CORNERS.
 - PROVIDE ALL REQUIRED CMU SHAPES, SIZES, ENDCAPS, CORNER UNITS, HALF UNITS, BOND BEAMS, ETC. NECESSARY TO COMPLETE ALL CMU WALL CONSTRUCTION PER DESIGN INTENT ON DRAWINGS.
 - FRAMING HT MAY VARY SLIGHTLY IN FIELD TO WORK UNDER EXISTING ELEMENTS. CONSULT ARCHITECT IF A DISCREPANCY IS FOUND FOR RESOLUTION.
- EW: EXISTING MASONRY WALL OR METAL STUD WALL PARTITION TO REMAIN. CLEAN, PREP & RE-PAINT PER FINISH SCHEDULE.
 - P1: 8" X 8" X 16" CMU WALL FULL HT TO INFILL EXISTING CMU WALL OPENING. ALIGN COURSING TO MATCH EXISTING; SEE STRUCTURAL & WALL TYPE DETAILS
 - P2: 6" X 8" X 16" CMU WALL TO 9'-4" A.F.F. OR UNDERSIDE OF STRUCTURE OR FRAMED OPENING ABOVE; SEE STRUCTURAL & WALL TYPE DETAILS
 - P3: 4" X 8" X 16" CMU WALL TO 9'-4" A.F.F. OR UNDERSIDE OF STRUCTURE ABOVE; SEE STRUCTURAL & WALL TYPE DETAILS
 - P4: 6" 20 GA MTL. STUD WALL FRAMING @ 16" O.C. TO 9'-4" A.F.F. OR UNDERSIDE OF ROOF/CEILING DECK ABOVE W/ (1) LAYER 5/8" TYPE "X" GYP. BD. EACH SIDE FULL HEIGHT. PROVIDE 5" SOUND ATTENUATING BATT INSULATION FULL HEIGHT. PROVIDE MOLD, MILDEW & MOISTURE RESISTANT GYP BD AT ALL RESTROOM WALLS AND AT ANY WET WALL LOCATIONS, TYP.
 - P5: 3-5/8" 20 GA MTL. STUD WALL FRAMING @ 16" O.C. TO 9'-4" A.F.F. OR UNDERSIDE OF ROOF/CEILING DECK ABOVE W/ (1) LAYER 5/8" TYPE "X" GYP. BD. EACH SIDE FULL HEIGHT (OR FINISHED SIDE ONLY IF SHOWN AS A FURRING WALL ON PLAN). PROVIDE 3-1/2" SOUND ATTENUATING BATT INSULATION FULL HEIGHT. PROVIDE MOLD, MILDEW & MOISTURE RESISTANT GYP BD AT ALL RESTROOM WALLS AND AT ANY WET WALL LOCATIONS, TYP.



ENLARGED RESTROOM / LOCKER ROOM PLAN 1
 SCALE: 1/4" = 1'-0" A-110



OFFICE OF ADMINISTRATION
 DIVISION OF FACILITIES
 MANAGEMENT,
 DESIGN AND CONSTRUCTION

DEPARTMENT OF PUBLIC
 SAFETY
 THE MISSOURI
 NATIONAL GUARD

RENOVATE INTERIOR &
 EXTERIOR
 ANDERSON READINESS
 CENTER

712 ANDERSON STREET
 ANDERSON, MISSOURI 64831

PROJECT # T2421-01
 SITE # 6272
 FACILITY # 8136272002

REVISION: Δ
 DATE: 04/06/2026
 REVISION:
 DATE:
 REVISION:
 DATE:
 ISSUE DATE: 02/20/2026

CAD DWG FILE: A-110
 DRAWN BY: JD
 CHECKED BY: JD
 DESIGNED BY: JD

SHEET TITLE:
**ENLARGED
 FLOOR PLAN**

SHEET NUMBER:
A-110
 13 OF 35 SHEETS
 02/20/2026

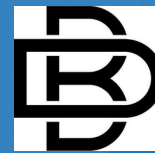


NESHAP Asbestos Inspection

Missouri Army National Guard Anderson
Readiness Center
710 Anderson St
Anderson, MO 64831

Project Number: 925046

PREPARED FOR



BUXTON KUBIK DODD
DESIGN COLLECTIVE

Buxton Kubik Dodd, Inc.
3100 S. National Avenue, Suite 300
Springfield, MO 65807
Jonathan Dodd
Director of Architecture

PREPARED BY

OCCU-TEC, Inc.
2604 NE Industrial Dr #230
North Kansas City, MO 64117
P 816.231.5580

May 6th, 2025

Acronyms

EPA	United States Environmental Protection Agency
AHERA	Asbestos Hazard and Emergency Response Act
NESHAP	National Emissions Standards for Hazardous Air Pollutants
ACM	Asbestos Containing Material
PACM	Presumed Asbestos Containing Material
NIST	National Institute of Standards and Technology
NVLAP	National Laboratory Accreditation Program
PLM	Polarized Light Microscopy
TEM	Transmission Electron Microscopy
MDNR	Missouri Department of Natural Resources
NOB	Non-Friable Organically Bound ACM
CAA	Clean Air Act
AIHA	American Industrial Hygiene Association
MDNR	Missouri Department of Natural Resources
OSHA	Occupational Safety and Health Administration
PEL	Permissible Exposure Limit

Contents

EXECUTIVE SUMMARY.....	1
1.0 INTRODUCTION.....	2
2.0 METHODOLOGY.....	2
2.1 Asbestos Survey.....	2
3.0 INVESTIGATION RESULTS.....	4
3.1 Asbestos Results.....	4
4.0 LIMITATIONS OF THE SURVEY.....	4
5.0 RECOMMENDATIONS.....	5
6.0 SIGNATURE(S).....	5
7.0 REFERENCES.....	5

Appendices

Appendix A - Professional Qualifications

Appendix B - Photographic Documentation

Appendix C - Laboratory Analytical Results and Chain of Custody

Appendix D - Homogeneous Materials Table

Appendix E - Functional Space Table

EXECUTIVE SUMMARY

OCCU-TEC, Inc. (OCCU-TEC) completed an asbestos survey of the subject property located at 710 Anderson St, Anderson, MO at the request of Jonathan Dodd at Buxton Kubik Dodd, Inc.. The survey was completed throughout the entire building of the subject property.

The survey was completed by Justin Arnold of OCCU-TEC on April 22nd, 2025. The survey was completed in general accordance with the requirements set forth by AHERA, NESHAP, MDNR, and local regulations as applicable.

During the inspection, OCCU-TEC identified fourteen (14) suspect asbestos containing materials (ACMs) that were quantified and sampled. Samples were analyzed by PLM by Hayes Microbial Consulting (Hayes) of Midlothian, Virginia. Samples are considered ACM if at least one sample from a homogenous material contains asbestos at a concentration greater than 1-percent by volume. Results of sampling indicated the presence of ACMs at the subject property.

This executive summary has been prepared to provide a brief outline of the activities completed during the investigation and a general overview of the results of the investigation. Additional detail regarding the methodology and results of the investigation are included in the subsequent report. The report should be read in its entirety for a complete understanding of the investigation and results. Key terms and acronyms used throughout this report can be found in the Key Terms and Acronyms Section.

1.0 INTRODUCTION

On April 22nd, 2025 Justin Arnold of OCCU-TEC completed an asbestos survey at the request of Jonathan Dodd of Buxton Kubik Dodd, Inc.

Survey Details	
Property Name	Missouri Army National Guard Anderson Readiness Center
Address	710 Anderson St Anderson, MO
Area of Survey	Entire building
Reason for Survey	Renovation
Survey Authorization	Jonathan Dodd

2.0 METHODOLOGY

2.1 Asbestos Survey

The asbestos survey was completed in general accordance with accepted industry standards and the requirements set forth by the EPA procedures outlined in NESHAP and the AHERA (as referenced in [Section 7](#) of this report). The survey was completed by an EPA accredited inspector licensed by the State of Missouri. A copy of the inspector's credentials is included in the [Inspector Qualifications Appendix](#).

The survey involved a systematic visual assessment of the subject property to identify suspect ACM. Suspect ACMs were grouped into Homogeneous Materials based on the type of material, color, texture and date of application/installation. Once homogeneous materials were identified, each material is categorized into one of three categories: Surfacing Materials, Thermal System Insulation, or Miscellaneous Materials based on the definition outlined in the AHERA (as referenced in [Section 7](#) of this report).

After identification, materials were assessed to determine if the material is friable or non-friable. Friable is defined by the EPA as any identified ACM, that when dry, can be crumbled, pulverized or reduced to powder by hand pressure as described by AHERA (as referenced in [Section 7](#) of this report).

Materials determined to be non-friable were classified as Category I non-friable or Category II non-friable. Category I non-friable ACM is defined by the EPA as “asbestos containing resilient floor coverings, asphalt roofing products, packings and gaskets. All other non-friable ACM that is not classified as Category I non-friable is considered Category II non-friable ACM per the EPA NESHAP (as referenced in [Section 7](#) of this report).

Bulk samples of suspect homogeneous materials were collected in accordance with the requirements set forth in the AHERA regulations (as referenced in [Section 7](#) of this report) based the following requirements:

- *Surfacing material: Random sampling using the “3-5-7 rule” for sampling each homogeneous area of surfacing material. (3 samples from material 1,000 square feet or less, 5 samples of material between 1,000 square feet and 5,000 square feet, and 7 samples from material greater than 5,000 square feet).*
- *Thermal system insulation: At least 3 samples, randomly distributed, from each homogeneous material.*
- *Miscellaneous material: Samples (minimum of 2) will be collected from each miscellaneous homogenous material.*

It should be noted that the quantity of samples collected may vary from the requirements listed above. If the quantity of samples collected from each homogeneous material varied from the requirements listed above, OCCU-TEC collected samples in accordance with the exceptions listed in the AHERA regulations (as referenced in [Section 7](#) of this report).

All samples collected were submitted to Hayes Microbial Consulting (Hayes) of Midlothian, Virginia for laboratory analysis. The NIST accredits laboratories under the NVLAP. The NVLAP lab code number for Hayes Microbial Consulting (Hayes) of Midlothian, Virginia is 500096-0. Bulk samples were analyzed by PLM using the dispersion staining technique as set forth in the AHERA regulation (as referenced in [Section 7](#) of this report).

A material is considered an ACM if at least one sample collected from the homogenous material contained asbestos at a concentration greater than one percent (1%) by volume (as referenced in [Section 7](#) of this report).

3.0 INVESTIGATION RESULTS

3.1 Asbestos Results

The materials listed below are either confirmed to contain asbestos above the Federal EPA level of greater than 1% asbestos content, are at trace (<1%) levels, or were assumed to contain asbestos. A material description, approximate quantities, and material locations of the ACM identified at the subject property have been summarized below. Quantities are only an approximation and should be verified by any asbestos abatement contractor who may submit future abatement bids.

Table 3.1 Laboratory Analysis of Asbestos Containing Materials

Sample #	Sample Description	Material Location	Quantity	Friability	% Asbestos
BM-05-01	Black Mastic (old tiles)	Front Offices	1075 SF	NFR	3% Chrysotile
FTM-06-01	12" Gray Floor Tile & Black Mastic	NE Bunk Room, NE Office, East Entrance, & South Entrance	850 SF	NFR	3% Chrysotile
NA	Fire Door	Throughout	8 EA	NFR	Assumed
NA	Vault Door	Vault	1 EA	NFR	Assumed

SF = Square Feet
LF = Linear Feet
EA = Each

w/ = With
Rm. = Room

FR = Friable
NFR=Non-Friable

4.0 LIMITATIONS OF THE SURVEY

OCCU-TEC identified and collected samples of suspect ACM from the survey area of the Subject Property that were accessible at the time of the survey. Every reasonable effort was made to access and identify all suspect ACM's. However, if materials are found that do not match materials sampled, they should be assumed to be ACM and treated as ACM until sampling and laboratory analysis meeting the OSHA requirements is conducted.

This report is provided by OCCU-TEC for the sole reliance by Buxton Kubik Dodd, Inc. Any reliance by other parties is forbidden without OCCU-TECs express written consent. If other parties are granted reliance on this report by OCCU-TEC, said parties are bound by the terms and conditions set forth in the original proposal agreed to by the issuance of notice to proceed by Buxton Kubik Dodd, Inc.

5.0 RECOMMENDATIONS

OCCU-TEC recommends abatement of all materials confirmed to be asbestos by a qualified asbestos abatement contractor prior to any renovation that may impact the asbestos containing materials. OCCU-TEC recommends any suspect materials that are discovered during renovation or demolition that were not included in this report be assumed to be asbestos until sampling is conducted to confirm asbestos presence.

6.0 SIGNATURE(S)

OCCU-TEC appreciates the opportunity to provide Buxton Kubik Dodd, Inc. with the above referenced professional services. If you have any questions regarding the contents of this report, please contact us at (816) 231-5580. Thank you for choosing OCCU-TEC.

Respectfully,



Justin Arnold, CIEC
Project Manager



Kevin Heriford
Director of EH&S

7.0 REFERENCES

The Asbestos Hazard Emergency Response Act (AHERA) – 15 U.S.C Chapter 53, Subchapter II (1986)

Clean Air Act: National Emissions Standards for Hazardous Air Pollutants (NESHAP)- 42 U.S.C § 7401 Section 112 (1970)

NESHAP - 40 CFR § 61

AHERA - 40 CFR § 763 (E): *Interim Method for the Determination of Asbestos in Bulk Insulation Samples*

AHERA - 40 CFR § 763.86

AHERA - 40 CFR § 763.86 subpart (b)(2) through (4)

710 Anderson St
Anderson, MO

Housing and Urban Development - 24 CFR Part 35

EPA - 40 CFR Part 745

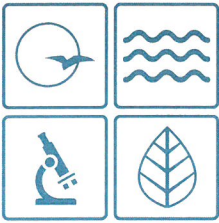
Interim Method for the Determination of Asbestos in Bulk Insulation Sample - 40 CFR § 763
(E)

Asbestos General Standard – OSHA – 29 CFR § 1910.1001

Asbestos Construction Standard – OSHA – 29 CFR § 1926.1101

Housing and Urban Development - 24 CFR Part 35, Subpart B, Section 1350.

APPENDIX A
PROFESSIONAL QUALIFICATIONS



MISSOURI
DEPARTMENT OF
NATURAL RESOURCES

Michael L. Parson
Governor

Dru Buntin
Director

January 9, 2025

Justin E. Arnold
2604 NE Industrial Dr. Ste 230
North Kansas City, MO 64117

RE: Missouri Asbestos Occupation Certification Card

Enclosed is your certification card for Asbestos Inspector, as issued by the Asbestos Unit of the Missouri Department of Natural Resources' Air Pollution Control Program.

Missouri Certification Number: 7011010725MOIR13670
Course Training Date: January 07, 2025
Missouri Certification Approval Date: January 09, 2025
Missouri Certification Expiration Date: January 09, 2026

Note:

- All Missouri-certified asbestos personnel must comply with the following statutes and regulations:
 - Sections 643.225 to 643.250, RSMo;
 - 10 CSR 10-6.241 *Asbestos Projects-Registration, Abatement, Notification, Inspection, Demolition, and Performance Requirements; and*
 - 10 CSR 10-6.250 *Asbestos Projects-Certification, Accreditation and Business Exemption Requirements.*
- To keep your occupation certification up-to-date, you must complete an annual refresher course and submit a renewal application each year.
- In order to be eligible to renew your certification, you must successfully complete a refresher course with a Missouri-accredited training provider within 12 months of the expiration date of your current training certificate. If you exceed this grace period, you will be required to retake a Missouri-accredited initial course in order to be eligible for Missouri certification.

To obtain a copy of the certification renewal application, or review regulations and requirements, please visit our website at <http://dnr.mo.gov/env/apcp/asbestos/index.htm>.

If you have any questions please call the Air Pollution Control Program at 573-751-4817.

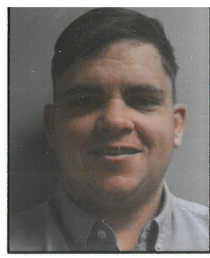
AIR POLLUTION CONTROL PROGRAM

Director of Air Pollution Control Program



CERTIFICATION NUMBER:
7011010725MOIR13670

THIS CERTIFIES
Justin E. Arnold
HAS COMPLETED THE CERTIFICATION
REQUIREMENTS FOR
Inspector



APPROVED: **01/09/2025**

TRAINING DATE: **01/07/2025**

EXPIRES: **01/09/2026**


Director of Air Pollution Control Program

APPENDIX B
PHOTOGRAPHIC DOCUMENTATION



Description: Fire Doors - Assumed



Description: Carpet with floor tile mastic



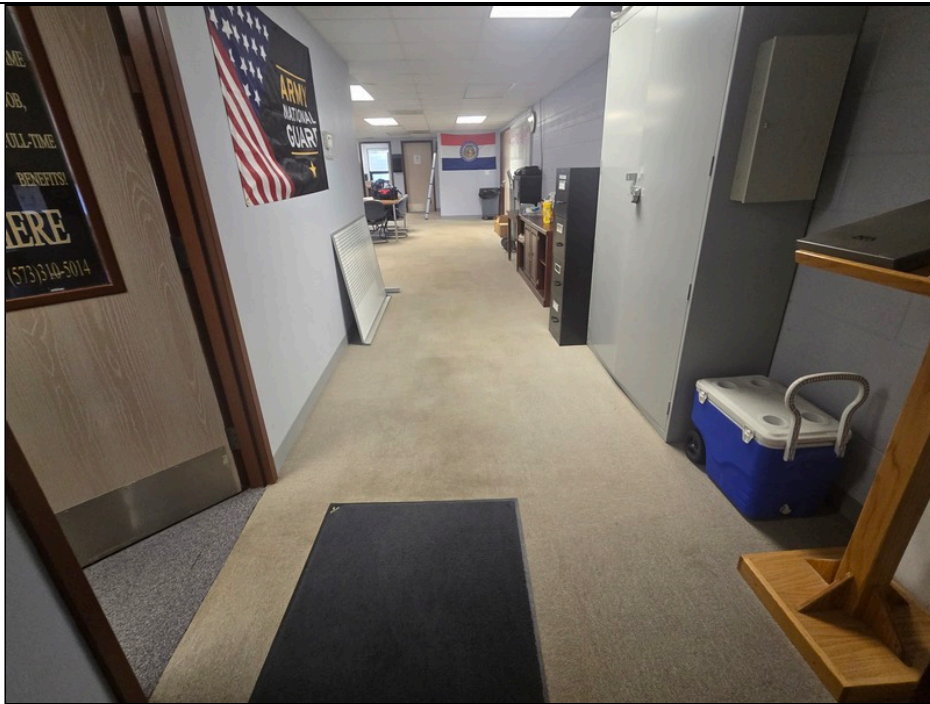
Description: Vault Door - Assumed



Description: Floor Tile & Mastic



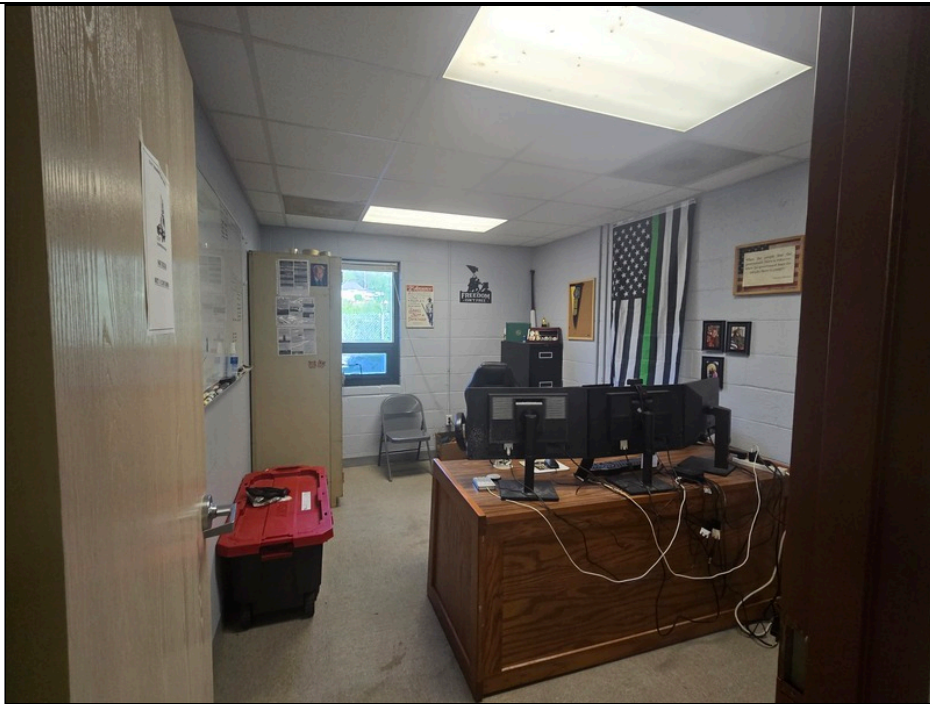
Description: Floor Tile & Mastic



Description: Front offices with mastic under carpet



Description: Front offices with mastic under carpet



Description: Front offices with mastic under carpet

710 Anderson St
Anderson, MO



Description: Front offices with mastic under carpet

APPENDIX C
LABORATORY ANALYTICAL RESULTS AND CHAIN OF CUSTODY



#25017784

Analysis Report prepared for

Occu-Tec

2604 NE Industrial Drive
Suite 230
North Kansas City, MO 64117

Phone: (816) 994-3420

925046
Anderson Readiness Center

Collected: April 22, 2025
Received: April 24, 2025
Reported: May 1, 2025

We would like to thank you for trusting Hayes Microbial for your analytical needs!
We received 27 samples by FedEx in good condition for this project on April 24th, 2025.

The results in this analysis pertain only to this job, collected on the stated date, and should not be used in the interpretation of any other job. Information supplied by the customer can affect the validity of results. These results apply only to the samples as received. This report may not be duplicated, except in full, without the written consent of Hayes Microbial Consulting, LLC.

All information provided to Hayes Microbial is confidential information relating to our customers and their clients. We will not disclose, copy, or distribute any information verbally or written, except to those designated by the customer(s). We take confidentiality very seriously. No changes to the distribution list will be made without the express consent of the customer.

This laboratory bears no responsibility for sample collection activities, analytical method limitations, or your use of the test results. Interpretation and use of test results are your responsibility. Any reference to health effects or interpretation of mold levels is strictly the opinion of Hayes Microbial. In no event, shall Hayes Microbial or any of its employees be liable for lost profits or any special, incidental or consequential damages arising out of the use of these test results.

A handwritten signature in black ink that reads "Stephen N. Hayes".

Steve Hayes, BSMT (ASCP)
Laboratory Director
Hayes Microbial Consulting, LLC.



EPA Laboratory ID: VA01419



DPH License: #PH-0198

Asbestos PLM Bulk

EPA 600/R-93/116; EPA 40 CFR Appendix E to Subpart E of Part 763

#	Sample	Material Description	Non-Fibrous	Non-Asbestos Fibers	Asbestos Fibers
1	CT01-01 - 2'x2' Poc & Pinhole Ceiling Tile	Homogenous / Ceiling Tile / White/Gray	25%	60% Cellulose Fibers 15% Fiberglass	None Detected
2	CT01-02 - 2'x2' Poc & Pinhole Ceiling Tile	Homogenous / Ceiling Tile / White/Gray	25%	60% Cellulose Fibers 15% Fiberglass	None Detected
3	CT01-03 - 2'x2' Poc & Pinhole Ceiling Tile	Homogenous / Ceiling Tile / White/Gray	25%	60% Cellulose Fibers 15% Fiberglass	None Detected
4	DWJC-02-01 - Drywall & Joint Compound	Homogenous / Joint Compound / White	100%		None Detected
		Homogenous / Tape / Cream	5%	95% Cellulose Fibers	None Detected
		Homogenous / Joint Compound / White	100%		None Detected
		Heterogenous / Drywall / White/Brown	90%	8% Cellulose Fibers 2% Fiberglass	None Detected
5	DWJC-02-02 - Drywall & Joint Compound	Homogenous / Joint Compound / White	100%		None Detected
		Homogenous / Tape / Cream	5%	95% Cellulose Fibers	None Detected
		Heterogenous / Drywall / White/Brown	90%	8% Cellulose Fibers 2% Fiberglass	None Detected
6	DWJC-02-03 - Drywall & Joint Compound	Homogenous / Joint Compound / White	100%		None Detected
		Homogenous / Tape / Cream	5%	95% Cellulose Fibers	None Detected
		Heterogenous / Drywall / White/Brown	90%	8% Cellulose Fibers 2% Fiberglass	None Detected

Collected: **Apr 22, 2025**

Received: **Apr 24, 2025**

Reported: **May 1, 2025**



Project Analyst:
Emily Cassady, *Emily Cassady*

Date:
04 - 24 - 2025

Reviewed By:
Brian Keith, *[Signature]*

Date:
05 - 01 - 2025

Asbestos PLM Bulk

EPA 600/R-93/116; EPA 40 CFR Appendix E to Subpart E of Part 763

#	Sample	Material Description	Non-Fibrous	Non-Asbestos Fibers	Asbestos Fibers
7	CBM-03-01 - 2" Gray Covebase & Mastic	Homogenous / Cove Base / Gray	100%		None Detected
		Homogenous / Mastic / Yellow	100%		None Detected
8	CBM-03-02 - 2" Gray Covebase & Mastic	Homogenous / Cove Base / Gray	100%		None Detected
		Homogenous / Mastic / Cream	100%		None Detected
		Homogenous / Fibrous Backing / Brown	5%	95% Cellulose Fibers	None Detected
9	CM-04-01 - Yellow Carpet Mastic	Homogenous / Mastic / Yellow	100%		None Detected
		Homogenous / Cementitious / Gray	100%		None Detected
10	CM-04-02 - Yellow Carpet Mastic	Homogenous / Mastic / Beige	100%		None Detected
11	BM-05-01 - Black Mastic	Homogenous / Mastic / Black	97%		3% Chrysotile
12	BM-05-02 - Black Mastic	Homogenous / Mastic / Black			(Not Analyzed, Positive Stop)
13	FTM-06-01 - 12" Gray Floor Tile & Mastic	Homogenous / Floor Tile / Gray	100%		None Detected
		Homogenous / Mastic / Black	97%		3% Chrysotile
14	FTM-06-02 - 12" Gray Floor Tile & Mastic	Homogenous / Floor Tile / Gray	100%		None Detected
		Homogenous / Mastic / Black			(Not Analyzed, Positive Stop)
15	WPM-08-01 - White Pipe Mastic	Homogenous / Mastic / White	100%		None Detected
16	WPM-08-02 - White Pipe Mastic	Homogenous / Mastic / White	100%		None Detected

Collected: Apr 22, 2025

Received: Apr 24, 2025

Reported: May 1, 2025



Project Analyst:

Emily Cassady,

Emily Cassady

Date:

04 - 24 - 2025

Reviewed By:

Brian Keith,

Brian Keith

Date:

05 - 01 - 2025

Asbestos PLM Bulk

EPA 600/R-93/116; EPA 40 CFR Appendix E to Subpart E of Part 763

#	Sample	Material Description	Non-Fibrous	Non-Asbestos Fibers	Asbestos Fibers
17	DWCT-09-01 - Drywall Ceiling Tile	Heterogenous / Drywall / White/Brown	90%	8% Cellulose Fibers 2% Fiberglass	None Detected
18	DWCT-09-02 - Drywall Ceiling Tile	Heterogenous / Drywall / White/Brown	90%	8% Cellulose Fibers 2% Fiberglass	None Detected
19	DWCT-09-03 - Drywall Ceiling Tile	Heterogenous / Drywall / White/Brown	90%	8% Cellulose Fibers 2% Fiberglass	None Detected
20	SF-11-01 - Silver Roof Flashing	Homogenous / Flashing / Silver	100%		None Detected
		Homogenous / Caulk / Off-White	100%		None Detected
21	SF-11-02 - Silver Roof Flashing	Homogenous / Flashing / Silver	100%		None Detected
22	WM-12-01 - White Mastic	Homogenous / Caulk / White	100%		None Detected
23	WM-12-02 - White Mastic	Homogenous / Caulk / White	100%		None Detected
24	GF-13-01 - Gray Roof Flashing	Homogenous / Caulk / Black	100%		None Detected
25	GF-13-02 - Gray Roof Flashing	Homogenous / Mastic / Gray	100%		None Detected
26	WC-14-01 - Brown Window Caulking	Homogenous / Caulk / Brown	100%		None Detected
27	WC-14-02 - Brown Window Caulking	Homogenous / Caulk / Brown	100%		None Detected

Asbestos Analysis Information

Analysis Details	All samples were received in acceptable condition unless otherwise noted on the report. This report must not be used by the client to claim product certification, approval, or endorsement by AIHA, NIST, NVLAP, NY ELAP, or any agency. The results relate only to the items tested. Hayes Microbial Consulting reserves the right to dispose of all samples after a period of 60 days in compliance with state and federal guidelines.
PLM Analysis	All Polarized Light Microscopy (PLM) results include an inherent uncertainty of measurement associated with estimating percentages by PLM. Materials with interfering matrix, low asbestos content, or small fiber size may require additional analysis via TEM Analysis.
TEM Analysis	Analysis by TEM is capable of providing positive identification of asbestos type(s) and semi-quantitation of asbestos content.
Definitions	'None Detected' - Below the detected reporting limit of 1% unless point counting is performed, then the detected reporting limit is .25%.
New York ELAP	Per NY ELAP198.6 (NOB), TEM is the only reliable method to declare an NOB material as Non-Asbestos Containing. Any NY ELAP samples that are subcontracted to another laboratory will display the name and ELAP Lab Identification number in the report page heading of those samples. The original report provided to Hayes Microbial Consulting is available upon request.



Occu-Tec
 2604 NE Industrial Drive
 Suite 230
 North Kansas City, MO 64117

N

SHIP: FEDEX - PAK 50
 DATE: 04-24-2025



8185 3715 1763



Job Number: 925046 Job Name: Anderson Readiness Center
 Collector: Justin Arnold
 Date Collected: 4/22/25

Mobile: _____ Email: jarnold@occutec.com
 Note: _____

Analysis Type		Analysis Methods
PLM	Bulk	EPA 600*
	Point Count	400 Point*, 1000 Point*
	Vermiculite	EPA 600*, Cincinnati Method
	Soil	EPA 600*, CARB 435
TEM	Air	EPA AHERA, NIOSH 7402
	Bulk	Chatfield
	Wipe	ASTM D6480-05
	Microvac	ASTM D5755-09
PCM	Air	NIOSH 7400

Turnaround Times					
3 Hour*	Same Day*	1 Day	2 Day	3 Day	5 Day
3 Hour*	Same Day*	1 Day	2 Day	3 Day	5 Day
3 Hour*	Same Day*	1 Day	2 Day	3 Day	5 Day
3 Hour*	Same Day*	1 Day	2 Day	3 Day	5 Day
-	Same Day	1 Day	2 Day	3 Day	5 Day
-	Same Day	1 Day	2 Day	3 Day	5 Day
-	Same Day	1 Day	2 Day	3 Day	5 Day
-	Same Day	1 Day	2 Day	3 Day	5 Day
3 Hour	Same Day	1 Day	2 Day	3 Day	5 Day

#	Group	Number	Sample Name
1		DWCT-09-01	Drywall Ceiling Tile
2		DWCT-09-02	↓
3		DWCT-09-03	↓
4		SF-11-01	Silver Roof Flashing
5		SF-11-02	↓
6		WM-12-01	White Mastic
7		WM-12-02	↓
8		GF-13-01	Gray Roof Flashing
9		GF-13-02	↓
10		WC-14-01	Brown Window Caulking
11		WC-14-02	↓
12			
13			
14			
15			
16			

Analysis Type	Turnaround	Volume / Area	Stop (+)
EPA 600	5 Day		Yes
			↓
			↓
			↓
			↓
			↓
			↓
			↓
			↓
			↓
			↓
			↓
			↓
			↓
			↓

Released by: [Signature] Date: 4/22/25 Received By: MBA Date: 4/24/25

APPENDIX D
HOMOGENEOUS MATERIALS TABLE

HOMOGENEOUS MATERIALS

Client: Buxton Kubik Dodd, Inc. Project Number: 925046
 Project: Anderson Readiness Center ACM Inspection Date: 4/22/2025
 Building: Anderson Readiness Center Inspector: Justin Arnold

HM #	MATERIAL DESCRIPTION	MATERIAL TYPE	FRIABLE NON-FRIABLE	ASBESTOS-CONTAINING MATERIAL	TOTAL QUANTITY
01	2' X 2' Poc & Pin hole Ceiling Tile	Misc	Friable	ND	
02	Drywall & Joint Compound	Misc	Non-Friable	ND	
03	4" Gray Cove-base and mastic	Misc	Non-Friable	ND	
04	Yellow Carpet Mastic	Misc	Non-Friable	ND	
05	Black Mastic - (old floor tile)	Misc	Non-Friable	ACM	1075 SF
06	12" Gray Floor Tile & Mastic	Misc	Non-Friable	ACM	850 SF
07	Fire Doors	Misc	Non-Friable	Assume 2	8 EA
08	White Pipe Mastic	Misc	Non-Friable	ND	
09	Drywall Ceiling Tiles	Misc	Friable	ND	
10	Vault Doors	Misc	Non-Friable	Assume 2	1 EA
11	Silver Roof Flashing	Misc	Non-Friable	ND	
12	White Roof Mastic	Misc	Non-Friable	ND	
13	Gray Roof Flashing	Misc	Non-Friable	ND	
14	Window Caulking	Misc	Non-Friable	ND	

LEGEND: ACM = Asbestos Containment Materials Assume 1 = Assumed ACM (inaccessible) LF = LINEAR FEET C = Chrysotile
 ND = No Asbestos Detected Assume 2 = Assumed ACM (would destroy material integrity) SF = SQUARE FEET A = Amosite
 Surf = Surfacing TR = <1% ACM CF = CUBIC FEET
 TSI = Thermal System Insulation EA = Each
 Misc. = Miscellaneous

APPENDIX E
FUNCTIONAL SPACE TABLE



Client:	Buxton Kubik Dodd, Inc.	Project Number:	925046
Facility / Address:	Anderson Readiness Center 710 Anderson St, Anderson, MO 64831	Date(s):	4/22/2025
		Inspector:	Justin Arnold

ASBESTOS INSPECTION FUNCTIONAL SPACES

FUNCTIONAL SPACE NAME	FUNC. SPACE #	FLOOR	HM #	MAT. TYPE	MATERIAL DESCRIPTION	L	W	H	SF	WSA	P	Quantity	F or NF
SE Office	3	1	1	Misc	2' X 2' Poc & Pin hole Ceiling Tile	14	9	8	126	368	46	130	Friable
			2	Misc	Drywall & Joint Compound							200	Non-Friable
			3	Misc	4" Gray Cove-base and mastic							50	Non-Friable
			4	Misc	Yellow Carpet Mastic							130	Non-Friable
			5	Misc	Black Mastic - (old floor tile)							130	Non-Friable
			8	Misc	White Pipe Mastic								Non-Friable
NE Office	4	1	1	Misc	2' X 2' Poc & Pin hole Ceiling Tile	14	10	8	140	384	48	140	Friable
			2	Misc	Drywall & Joint Compound							200	Non-Friable
			3	Misc	4" Gray Cove-base and mastic							50	Non-Friable
			4	Misc	Yellow Carpet Mastic							140	Non-Friable
			5	Misc	Black Mastic - (old floor tile)							140	Non-Friable
			8	Misc	White Pipe Mastic								Non-Friable
Kitchen	5	1	2	Misc	Drywall & Joint Compound	6	5	8	30	176	22	200	Non-Friable
			7	Misc	Fire Doors	22	22	8	484	704	88	2	Non-Friable
			8	Misc	White Pipe Mastic								Non-Friable
			9	Misc	Drywall Ceiling Tiles							550	Friable

