

Improvements to Water & Wastewater Systems Infrastructure St. James Veterans Home St. James, Missouri

CM Archer Group, P.C. dba:



Corporate Authority:

CM Archer Group, P.C.: E: 2003023612-D, LS: 2004017577-D, A-2016017179

310 East 6th Street, Rolla, Missouri 65401 ■ Phone: 573-364-6362 Fax: 573-364-4782 ■ www.archer-elgin.com

OWNER: STATE OF MISSOURI
MICHAEL L. PARSON,
GOVERNOR

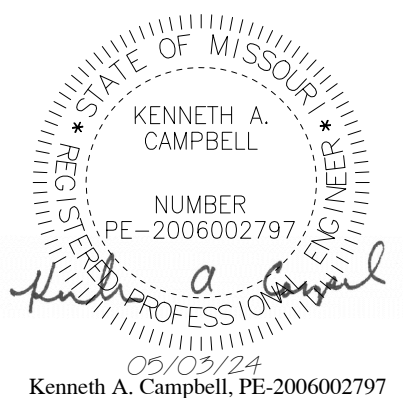
DEPARTMENT OF PUBLIC SAFETY
VETERANS COMMISSION

DESIGNER: Archer-Elgin

PROJECT NUMBER: U2309-01

PROJECT
MANAGEMENT: OFFICE OF ADMINISTRATION
DIVISION OF FACILITIES MANAGEMENT,
DESIGN AND CONSTRUCTION

SITE NUMBER: 6801
FACILITY NUMBER: 8136801012

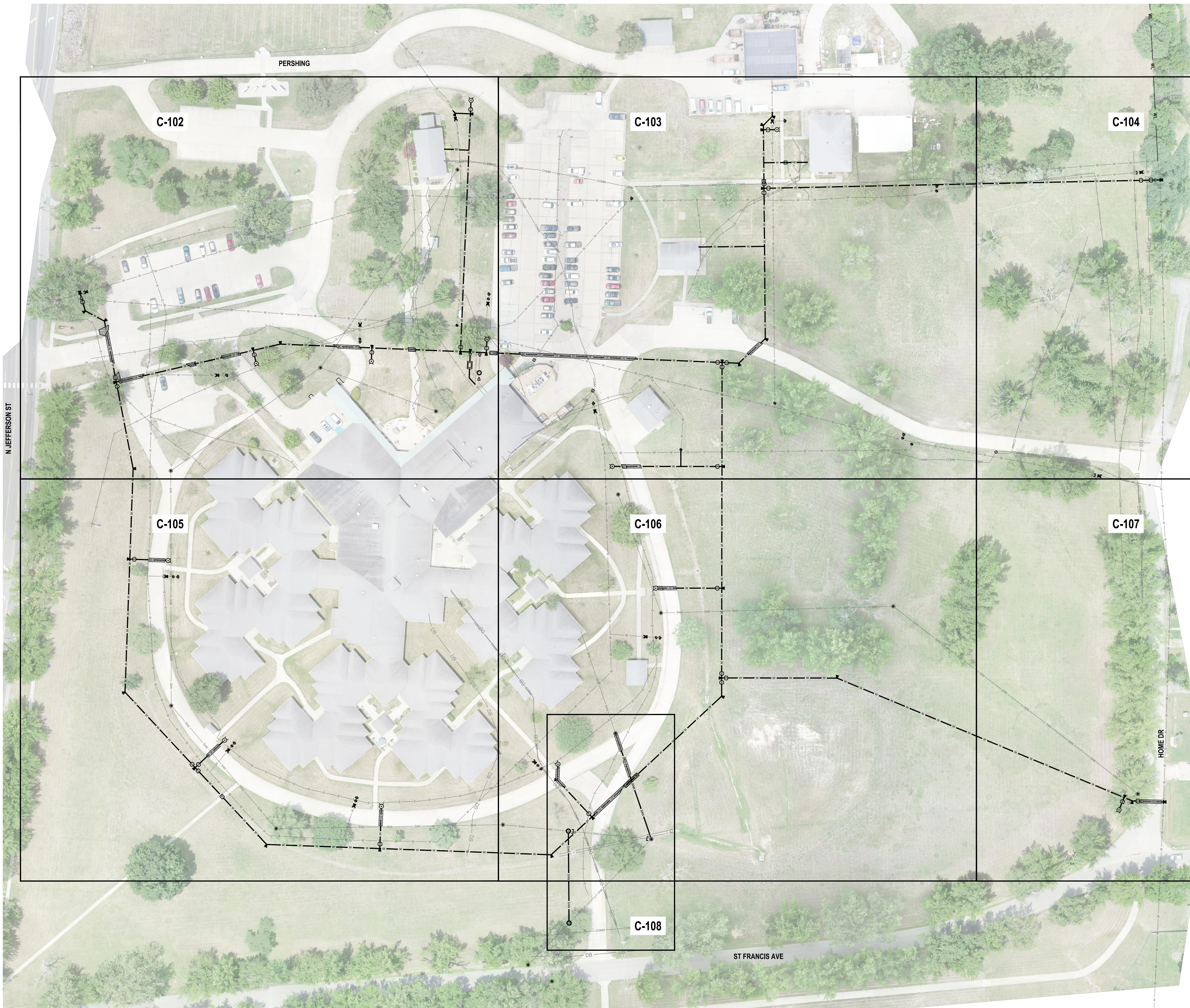


Kenneth A. Campbell, PE-2006002797

SHEET NUMBER:

G-001

1 OF 12 SHEETS
MAY 3, 2024



UTILITY NOTES:

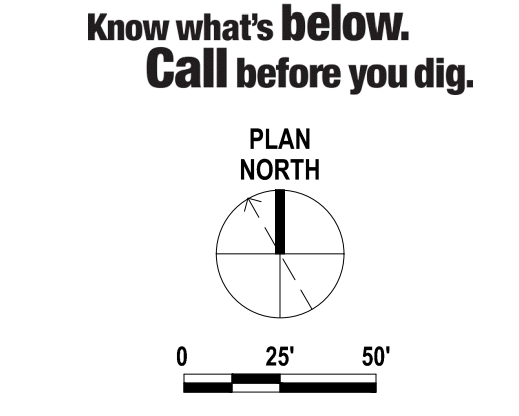
1. LOCATIONS AND / OR ELEVATION OF EXISTING UTILITIES AT ST. JAMES VETERANS HOME SITE IS BASED ON SURVEY PERFORMED BY GPS INC. IN JULY 2023 AND ALL AVAILABLE RECORD DRAWINGS. AS-BUILT UTILITY LOCATIONS AND / OR ELEVATIONS CAN BE EXPECTED TO VARY FROM THAT SHOWN ON THE PLANS. MAKE ALL REASONABLE EFFORT TO LOCATE EXISTING UTILITIES PRIOR TO THE COMMENCEMENT OF CONSTRUCTION ACTIVITIES. MAKE NECESSARY ADJUSTMENTS TO PROPOSED ALIGNMENT, CONNECTIONS, ETC. AS NECESSARY TO ACCOMMODATE FOR AS-BUILT CONDITIONS.
2. ALL TRENCHES UNDER PAVED AREAS SHALL BE BACKFILLED WITH GRANULAR MATERIAL AND COMPACTED TO MEET COMPACTION REQUIREMENTS FOR THE PARKING LOT. GRANULAR MATERIAL SHALL BE PLACED AND COMPACTED TO A LEVEL EQUAL TO THE TRENCH DEPTH AT THE TIME OF THE UTILITY INSTALLATION.
3. ALL UTILITIES LOCATED ON THE ST. JAMES VETERANS HOME SITE ARE OWNED AND OPERATED BY THE STATE OF MISSOURI VETERANS COMMISSION. COORDINATE ALL CONNECTIONS TO EXISTING UTILITIES AND / OR ABANDONMENT OF EXISTING UTILITIES WITH THE APPROPRIATE UTILITY COMPANY. A MINIMUM OF 72 HOURS PRIOR TO THE COMMENCEMENT OF WORK.
4. ALL WATERLINES SHALL HAVE A MINIMUM OF 42" INCHES OF COVER BELOW FINISH GRADE, UNLESS OTHERWISE INDICATED ON PLANS.
5. PROVIDE ALL WATERLINE TEES, VALVES, BENDS, TAPPING SLEEVES, METERS, METER PITS, FIRE HYDRANTS, ETC. NECESSARY TO CONSTRUCT THE WATERLINES AS SHOWN ON THESE PLANS. THRUST BLOCKING SHALL BE PROVIDED AT ALL TEES, BENDS AND FIRE HYDRANTS.
6. COORDINATE ADJUSTMENTS AND / OR CONNECTIONS TO EXISTING UTILITIES WITH APPROPRIATE UTILITY AS WORK PROGRESSES.
- SEWER: MISSOURI VETERANS COMMISSION - JEFFERY COOK 573-263-1455
ST. JAMES MUNICIPAL UTILITIES - LYLE THOMAS 573-265-7011
- WATER: MISSOURI VETERANS COMMISSION - JEFFERY COOK 573-263-1455
ST. JAMES MUNICIPAL UTILITIES - LYLE THOMAS 573-265-7011
- ELECTRIC: ST. JAMES MUNICIPAL UTILITIES - LYLE THOMAS 573-265-7011
- COMMUNICATIONS: CENTURYTELL - 573-261-3014
CHARTER - 314-579-4800
SMB TECHNOLOGIES 417-589-2615
7. ALL WATERLINE AND SANITARY SEWER CROSSINGS SHALL HAVE A MINIMUM 18 INCH VERTICAL SEPARATION AND 10 FEET HORIZONTAL SEPARATION. THE CONTRACTOR SHALL NOTE THAT THE DEPTHS OF EXISTING UTILITIES HAVE BEEN PLOTTED FROM INFORMATION PROVIDED BY VARIOUS UTILITY COMPANIES AND IS TO BE CONSIDERED APPROXIMATE. IF THE MINIMUM SEPARATIONS CANNOT BE CONSTRUCTED AS SHOWN, THE CONTRACTOR SHALL NOTIFY THE ENGINEER AND APPROPRIATE MODIFICATIONS WILL BE ISSUED.
8. VERIFY LOCATIONS OF ALL EXISTING UTILITIES TO BE CROSSED AND IDENTIFY POTENTIAL CONFLICTS PRIOR TO STARTING CONSTRUCTION.
9. SEQUENCE CONSTRUCTION ACTIVITIES TO MAINTAIN TO THE MAXIMUM EXTENTS POSSIBLE, POTABLE AND FIRE PROTECTION WATER SERVICES FOR ST. JAMES VETERANS HOME FACILITIES. PROPOSED WATERLINE SHALL NOT BE PLACED INTO SERVICE UNTIL CONSTRUCTION IS COMPLETE. ACCEPTANCE TESTING HAS BEEN PERFORMED. THE WATERLINE HAS BEEN DISINFECTED. WRITTEN AUTHORIZATION HAS BEEN PROVIDED BY ENGINEER AND OWNER. DO NOT IMPEDE OR OTHERWISE OBSTRUCT ST. JAMES VETERANS HOME FACILITY OPERATIONS DURING CONSTRUCTION OF PROPOSED IMPROVEMENTS.

NEW CHLORINE INJECTION PORT

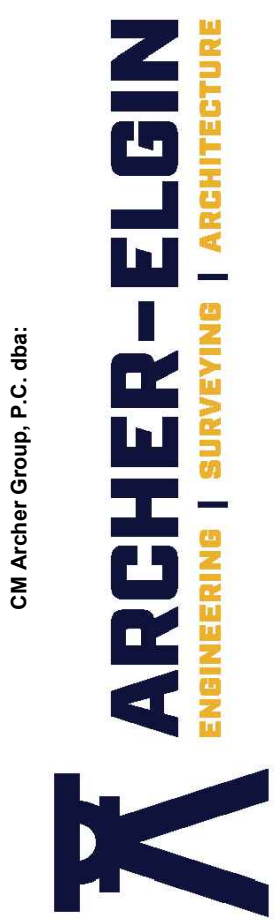
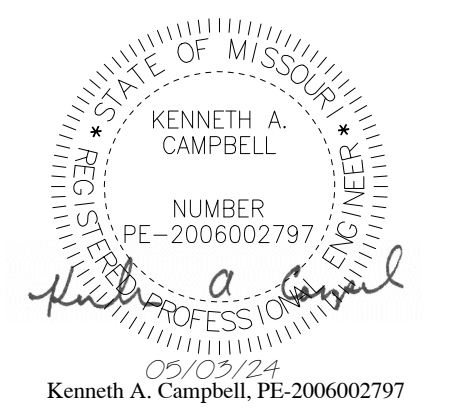
- NEW THRUST BLOCK
- NEW FIRE HYDRANT
- NEW WATER VALVE
- EX. WATER MAIN
- EX. SANITARY
- EX. UGE
- EX. NATURAL GAS
- EX. DUCTBANK
- EX. COMMUNICATION
- EX. STORM
- EX. FIRE HYDRANT
- EX. WATER VALVE
- EX. SANITARY MANHOLE

DRAWING INDEX

- | | |
|--|-------|
| 1. Cover Sheet Sheet | G-001 |
| 2. Overall Site Plan & Key Sheet Sheet | C-101 |
| 3. Waterline Plan Sheet | C-102 |
| 4. Waterline Plan Sheet | C-103 |
| 5. Waterline Plan Sheet | C-104 |
| 6. Waterline Plan Sheet | C-105 |
| 7. Waterline Plan Sheet | C-106 |
| 8. Waterline Plan Sheet | C-107 |
| 9. Sanitary Plan & Profile Sheet | C-108 |
| 10. Civil Details Sheet | C-501 |
| 11. Civil Details Sheet | C-502 |
| 12. Civil Details Sheet | C-503 |



STATE OF MISSOURI
MICHAEL L. PARSON,
GOVERNOR



Corporate Authority:
CM Archer Group, P.C., E. 2602028757.D, LS. 202401757.D, A-2016017179
310 E. Main Street, Suite 1000, Missouri 64501 • Phone: 314-364-6200 • Fax: 314-364-4740 • www.archer-elgin.com

OFFICE OF ADMINISTRATION
DIVISION OF FACILITIES
MANAGEMENT,
DESIGN AND CONSTRUCTION

DEPARTMENT OF
PUBLIC SAFETY
VETERANS COMMISSION

IMPROVEMENTS TO WATER
& WASTEWATER SYSTEM
INFRASTRUCTURE

ST JAMES VETERANS HOME
620 N JEFFERSON ST
ST. JAMES, MISSOURI

PROJECT # U2309-01
SITE # 6801
FACILITY # 8136801012

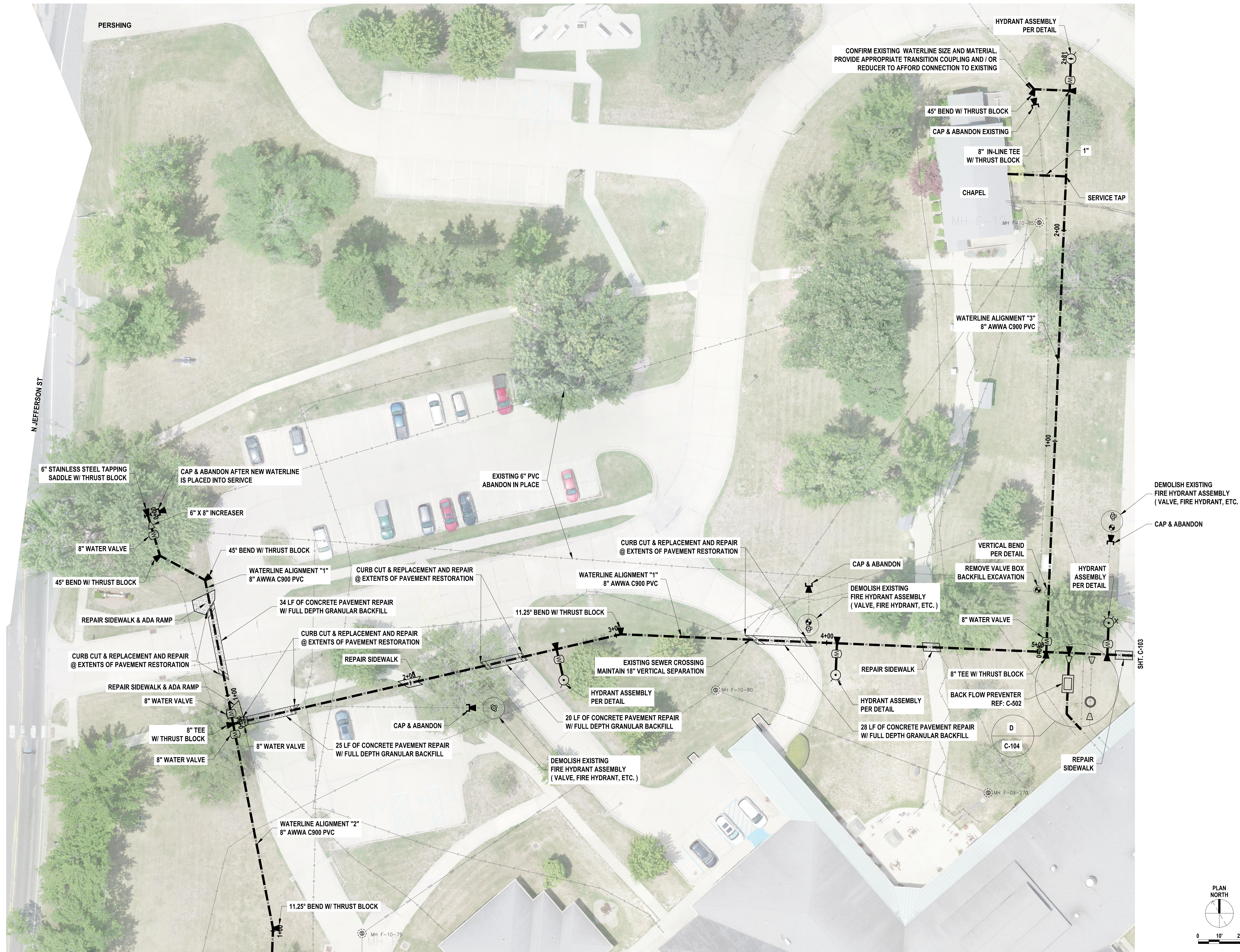
REVISION: _____
DATE: _____
REVISION: _____
DATE: _____
REVISION: _____
DATE: _____
ISSUE DATE: 05/03/2024

CAD DWG FILE: C-101
DRAWN BY: JSM
CHECKED BY: KAC
DESIGNED BY: KAC

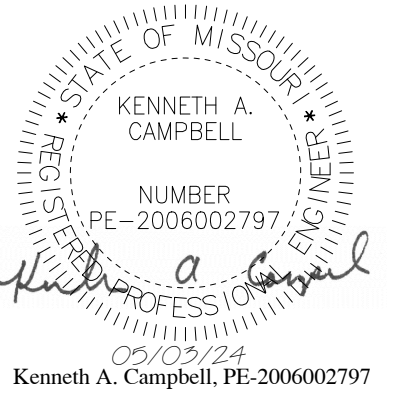
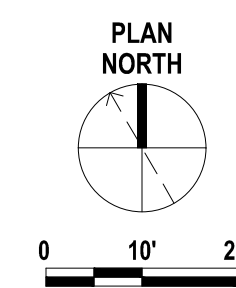
SHEET TITLE:
OVERALL SITE PLAN
& KEY SHEET

SHEET NUMBER:
C-101

2 OF 12 SHEETS
05/03/2024



SHT. C-105



Corporate Authority:
CM Archer Group, P.C., E. 2632328745, E. 2632328747, D. A-201601179
310 East 6th Street, Suite 1000, Missouri 64101 • Phone: 314-364-4600 • Fax: 314-364-4601 • www.archer-eglin.com

OFFICE OF ADMINISTRATION
DIVISION OF FACILITIES
MANAGEMENT,
DESIGN AND CONSTRUCTION

DEPARTMENT OF
PUBLIC SAFETY
VETERANS COMMISSION

IMPROVEMENTS TO WATER
& WASTEWATER SYSTEM
INFRASTRUCTURE

ST JAMES VETERANS HOME
620 N JEFFERSON ST
ST. JAMES, MISSOURI

PROJECT # U2309-01
SITE # 6801
FACILITY # 813680102

REVISION: _____
DATE: _____
REVISION: _____
DATE: _____
REVISION: _____
DATE: _____
ISSUE DATE: 05/03/2024

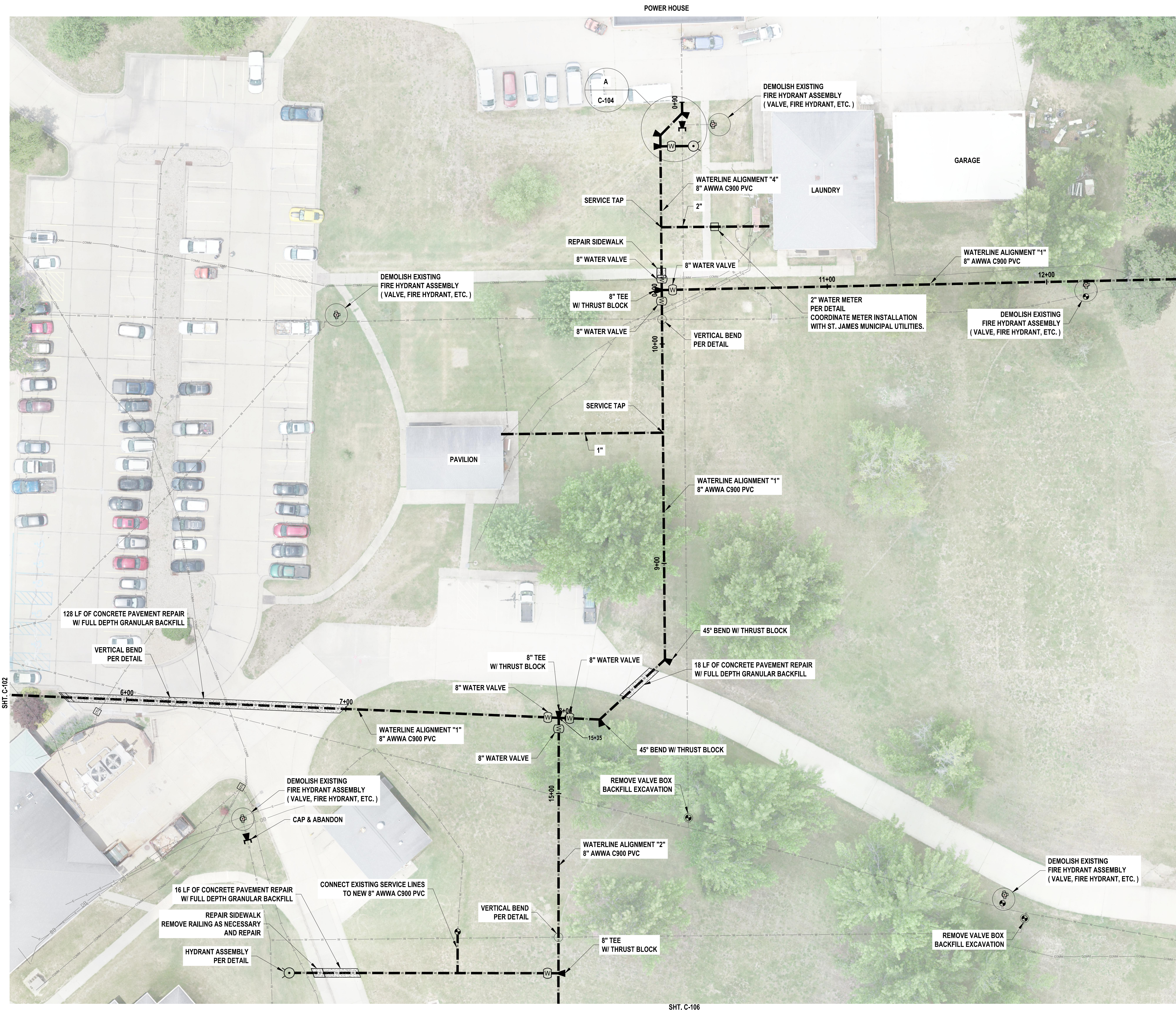
CAD DWG FILE: C-102
DRAWN BY: JSM
CHECKED BY: KAC
DESIGNED BY: KAC

SHEET TITLE:
WATERLINE PLAN

SHEET NUMBER:

C-102

3 OF 12 SHEETS
05/03/2024



POWER HOUSE

C-104

DEMOLISH EXISTING
FIRE HYDRANT ASSEMBLY
(VALVE, FIRE HYDRANT, ETC.)

GARAGE

LAUNDRY

SERVICE TAP

WATERLINE ALIGNMENT "4"
8" AWWA C900 PVC

WATERLINE ALIGNMENT "1"
8" AWWA C900 PVC

DEMOLISH EXISTING
FIRE HYDRANT ASSEMBLY
(VALVE, FIRE HYDRANT, ETC.)

REPAIR SIDEWALK

8" WATER VALVE

8" WATER VALVE

2" WATER METER
PER DETAIL
COORDINATE METER INSTALLATION
WITH ST. JAMES MUNICIPAL UTILITIES.

DEMOLISH EXISTING
FIRE HYDRANT ASSEMBLY
(VALVE, FIRE HYDRANT, ETC.)

8" TEE
W/ THRUST BLOCK

VERTICAL BEND
PER DETAIL

8" WATER VALVE

SERVICE TAP

WATERLINE ALIGNMENT "1"
8" AWWA C900 PVC

PAVILION

1"

45° BEND W/ THRUST BLOCK

128 LF OF CONCRETE PAVEMENT REPAIR
W/ FULL DEPTH GRANULAR BACKFILL

VERTICAL BEND
PER DETAIL

8" TEE
W/ THRUST BLOCK

8" WATER VALVE

18 LF OF CONCRETE PAVEMENT REPAIR
W/ FULL DEPTH GRANULAR BACKFILL

SHT. C-102

WATERLINE ALIGNMENT "1"
8" AWWA C900 PVC

8" WATER VALVE

8" WATER VALVE

8" TEE
W/ THRUST BLOCK

45° BEND W/ THRUST BLOCK

REMOVE VALVE BOX
BACKFILL EXCAVATION

DEMOLISH EXISTING
FIRE HYDRANT ASSEMBLY
(VALVE, FIRE HYDRANT, ETC.)

CAP & ABANDON

16 LF OF CONCRETE PAVEMENT REPAIR
W/ FULL DEPTH GRANULAR BACKFILL

CONNECT EXISTING SERVICE LINES
TO NEW 8" AWWA C900 PVC

8" WATER VALVE

WATERLINE ALIGNMENT "2"
8" AWWA C900 PVC

VERTICAL BEND
PER DETAIL

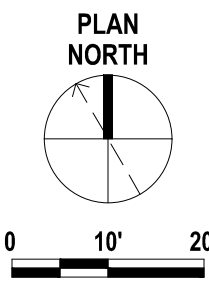
8" TEE
W/ THRUST BLOCK

DEMOLISH EXISTING
FIRE HYDRANT ASSEMBLY
(VALVE, FIRE HYDRANT, ETC.)

REPAIR SIDEWALK
REMOVE RAILING AS NECESSARY
AND REPAIR

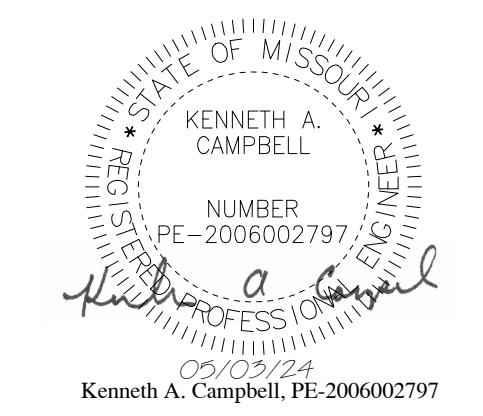
HYDRANT ASSEMBLY
PER DETAIL

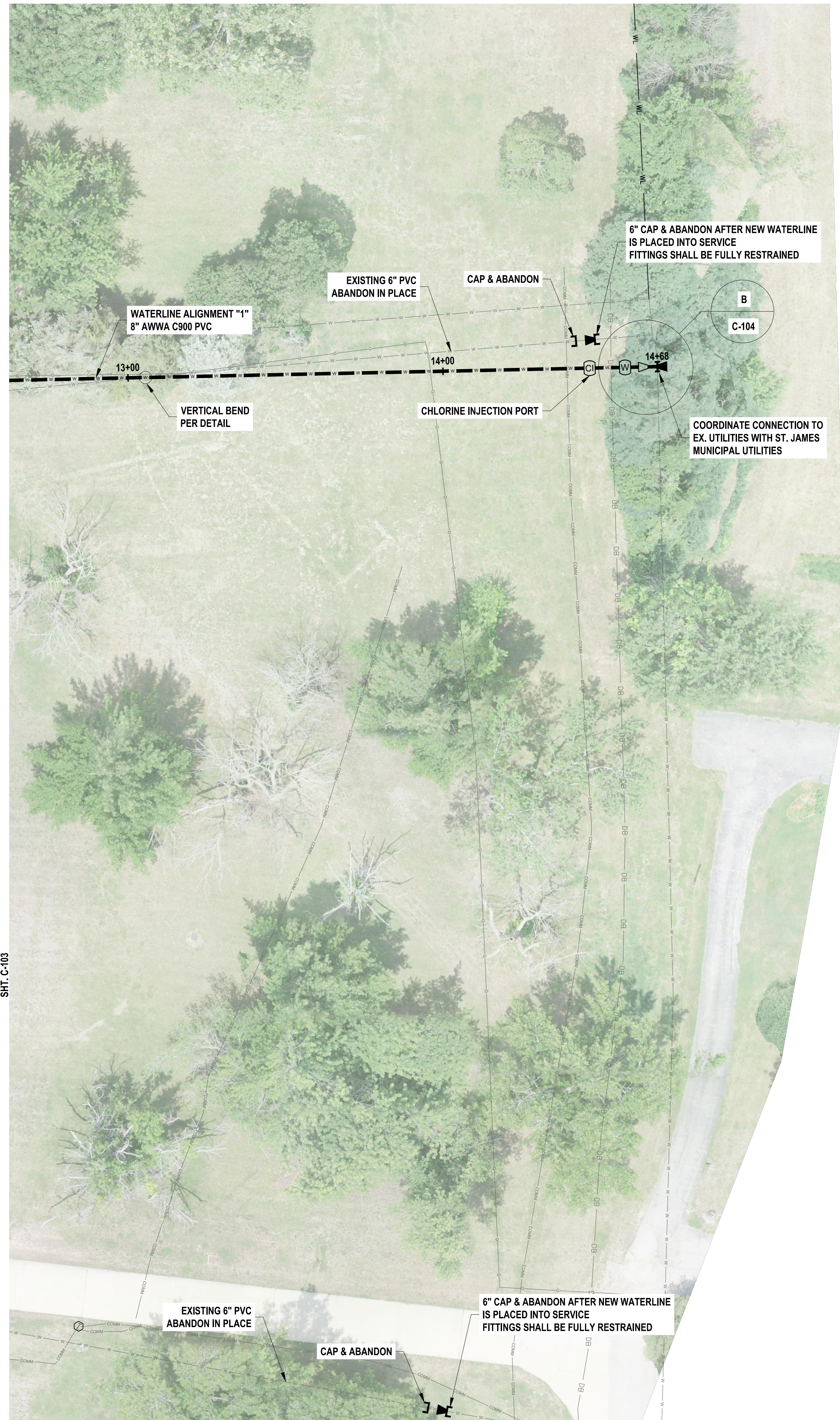
REMOVE VALVE BOX
BACKFILL EXCAVATION



SHT. C-106

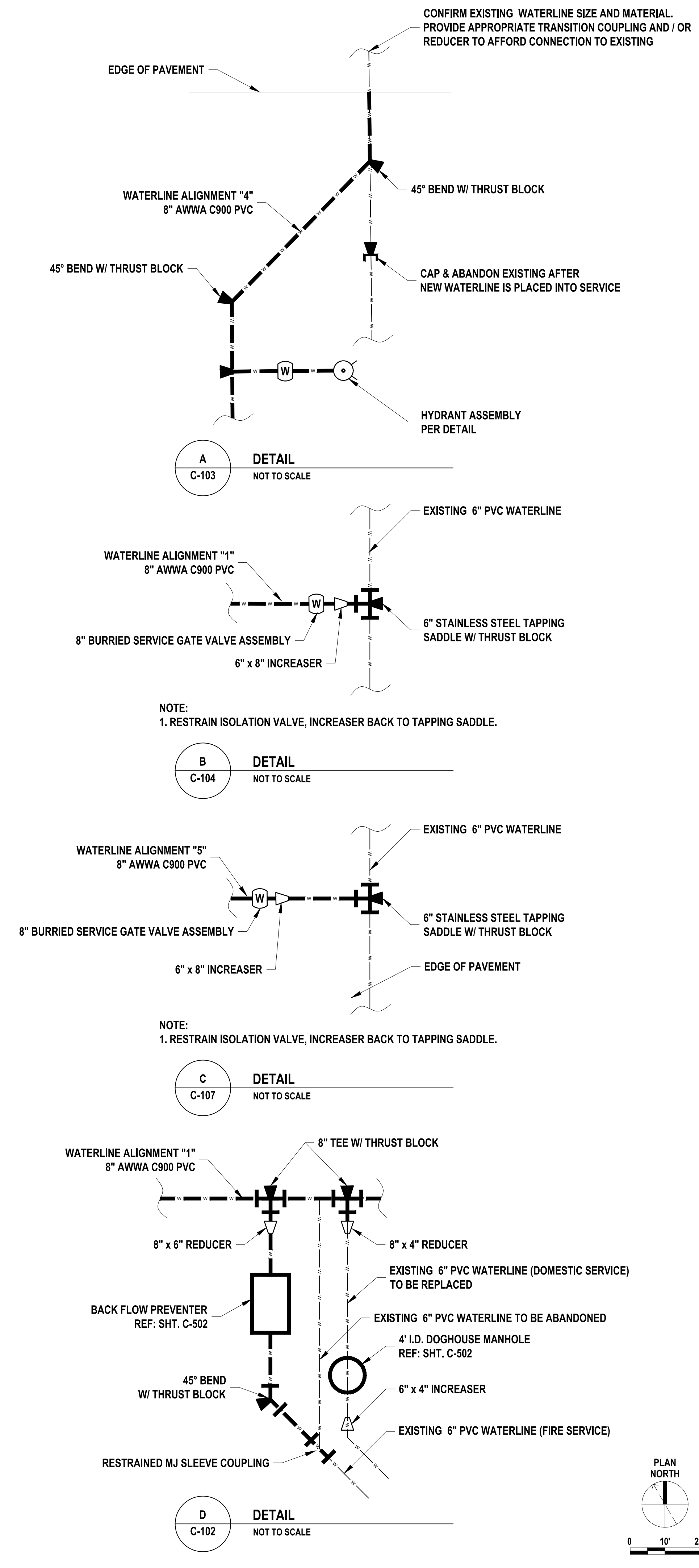
SHT. C-104



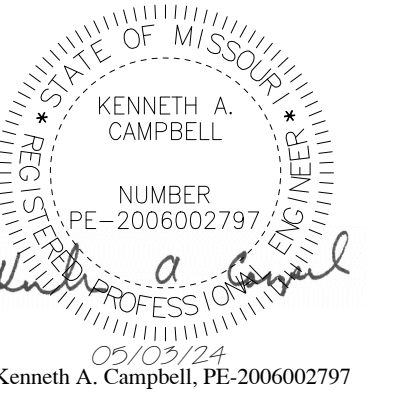


SHT. C-103

SHT. C-107



STATE OF MISSOURI
MICHAEL L. PARSON,
GOVERNOR



Corporate Authority:
CM Archer Group, P.C., E. 26032928745, E. 2604017877, D. A-201601179
310 East 6th Street, Suite 1000, Missouri 64101 • Phone: 314-364-6200 • Fax: 314-364-4100 • www.archer-eglin.com

OFFICE OF ADMINISTRATION
DIVISION OF FACILITIES
MANAGEMENT,
DESIGN AND CONSTRUCTION

DEPARTMENT OF
PUBLIC SAFETY
VETERANS COMMISSION

IMPROVEMENTS TO WATER
& WASTEWATR SYSTEM
INFRASTRUCTURE

ST JAMES VETERANS HOME
620 N JEFFERSON ST
ST. JAMES, MISSOURI

PROJECT # U2309-01
SITE # 6801
FACILITY # 8136801012

REVISION: _____
DATE: _____
REVISION: _____
DATE: _____
REVISION: _____
DATE: _____
ISSUE DATE: 05/03/2024

CAD DWG FILE: C-104
DRAWN BY: JSM
CHECKED BY: KAC
DESIGNED BY: KAC

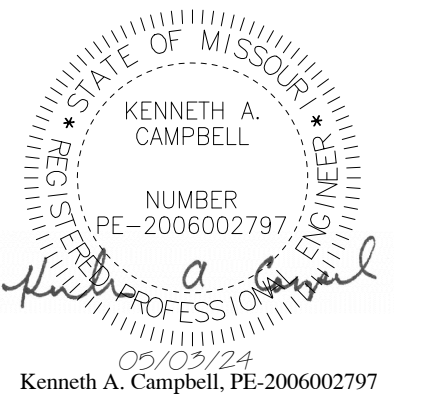
SHEET TITLE:
WATERLINE PLAN

SHEET NUMBER:
C-104
5 OF 12 SHEETS
05/03/2024

CONSTRUCTION NOTE:

- 1. DO NOT OBSTRUCT OR OTHERWISE BLOCK FIRE LANE DURING CONSTRUCTION.

STATE OF MISSOURI
MICHAEL L. PARSON,
GOVERNOR



OFFICE OF ADMINISTRATION
DIVISION OF FACILITIES
MANAGEMENT,
DESIGN AND CONSTRUCTION

DEPARTMENT OF
PUBLIC SAFETY
VETERANS COMMISSION

IMPROVEMENTS TO WATER
& WASTEWATER SYSTEM
INFRASTRUCTURE

ST JAMES VETERANS HOME
620 N JEFFERSON ST
ST. JAMES, MISSOURI

PROJECT # U2309-01
SITE # 6801
FACILITY # 8136801012

REVISION: _____
DATE: _____
REVISION: _____
DATE: _____
REVISION: _____
DATE: _____
ISSUE DATE: 05/03/2024

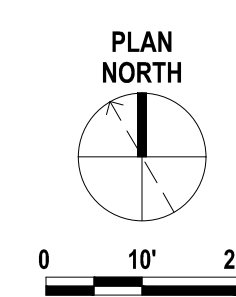
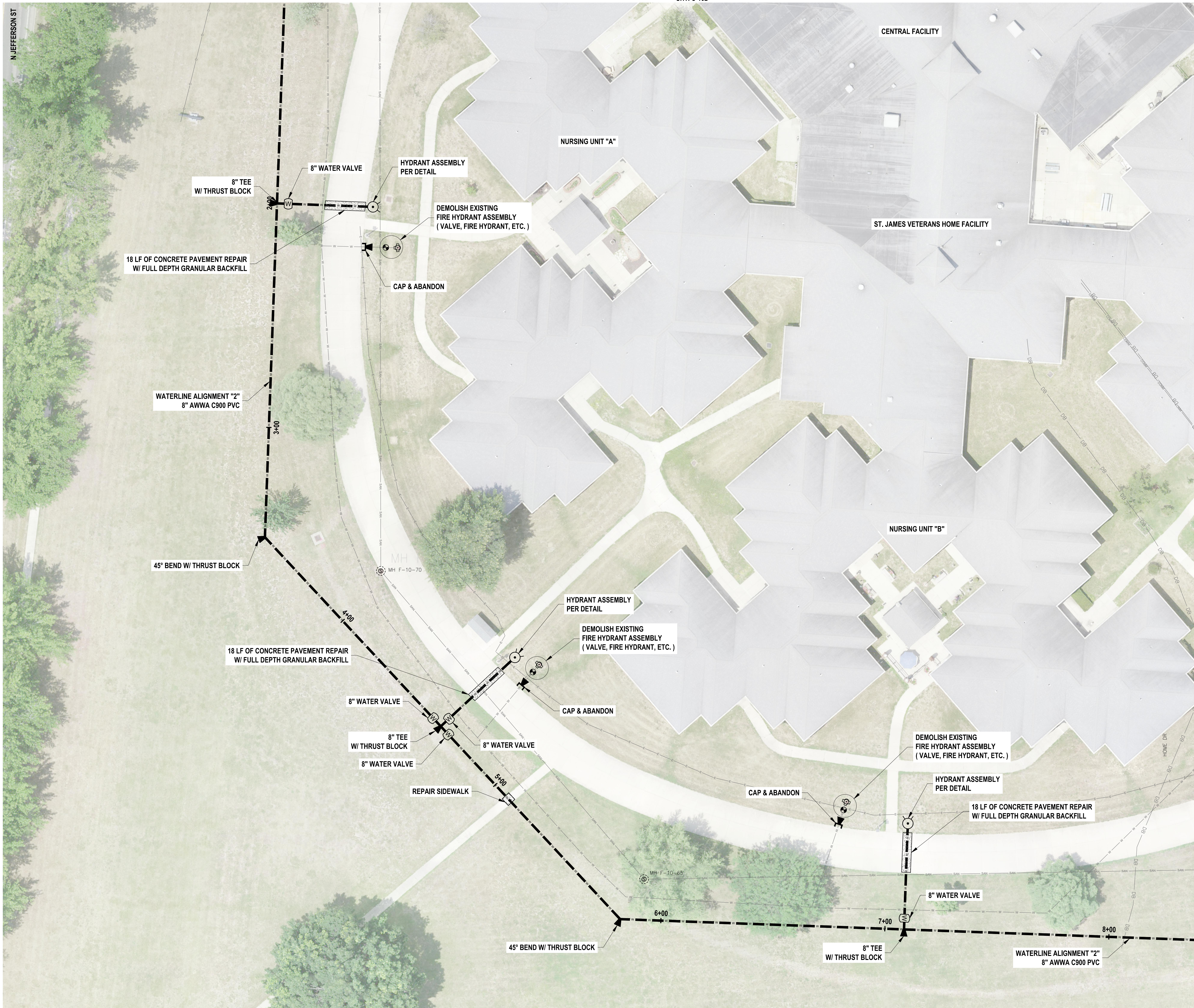
CAD DWG FILE: C-105
DRAWN BY: JSM
CHECKED BY: KAC
DESIGNED BY: KAC

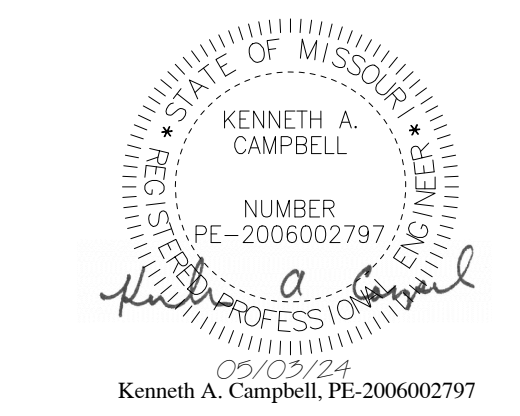
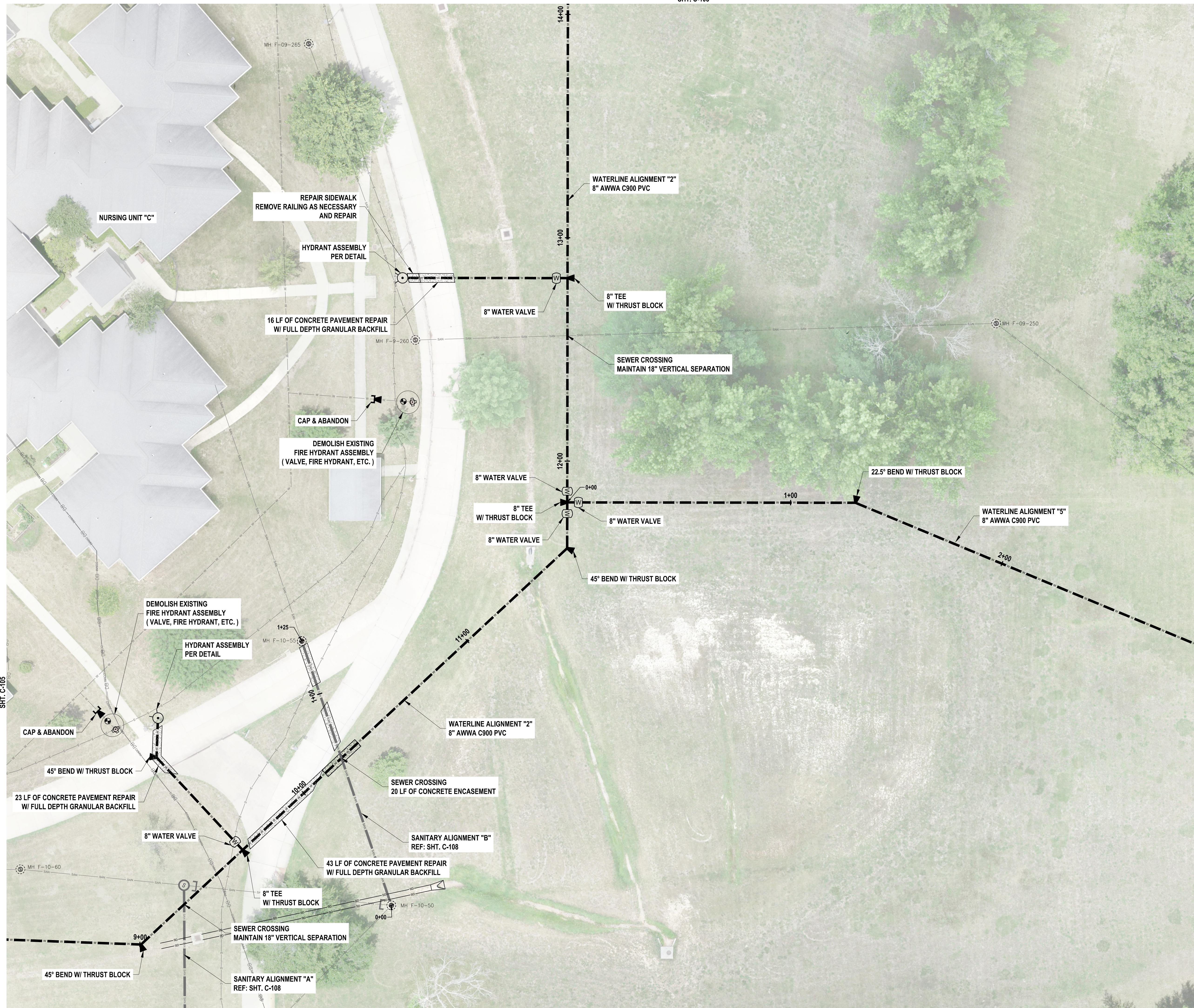
SHEET TITLE:
WATERLINE PLAN

SHEET NUMBER:

C-105

6 OF 12 SHEETS
05/03/2024





OFFICE OF ADMINISTRATION
DIVISION OF FACILITIES
MANAGEMENT,
DESIGN AND CONSTRUCTION

DEPARTMENT OF
PUBLIC SAFETY
VETERANS COMMISSION

IMPROVEMENTS TO WATER
& WASTEWATR SYSTEM
INFRASTRUCTURE

ST JAMES VETERANS HOME
620 N JEFFERSON ST
ST. JAMES, MISSOURI

PROJECT # U2309-01
SITE # 6801
FACILITY # 8136801012

REVISION: _____
DATE: _____
REVISION: _____
DATE: _____
REVISION: _____
DATE: _____
ISSUE DATE: 05/03/2024

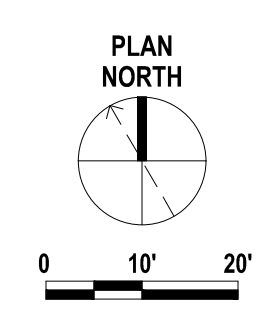
CAD DWG FILE: C-106
DRAWN BY: JSM
CHECKED BY: KAC
DESIGNED BY: KAC

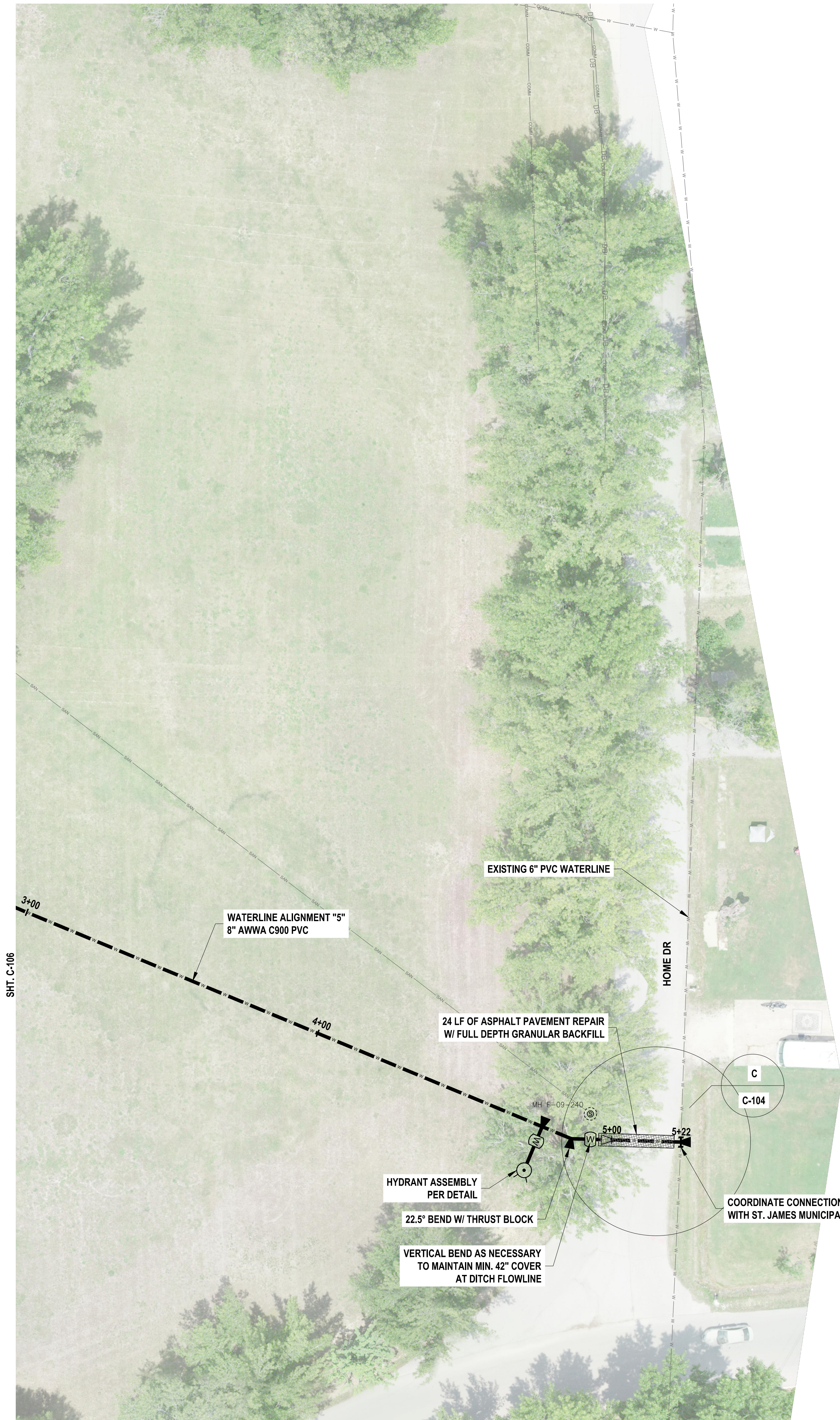
SHEET TITLE:
WATERLINE PLAN

SHEET NUMBER:

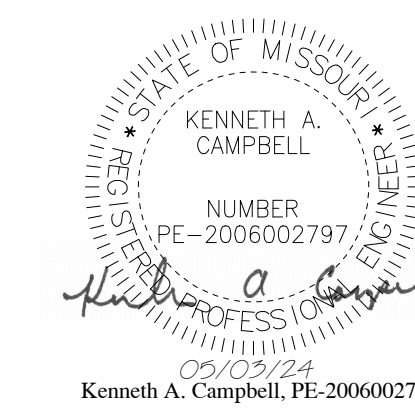
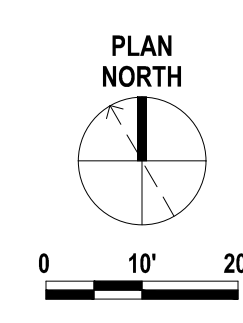
C-106

7 OF 12 SHEETS
05/03/2024





SHT. C-106



OFFICE OF ADMINISTRATION
DIVISION OF FACILITIES
MANAGEMENT,
DESIGN AND CONSTRUCTION

DEPARTMENT OF
PUBLIC SAFETY
VETERANS COMMISSION

IMPROVEMENTS TO WATER
& WASTEWATR SYSTEM
INFRASTRUCTURE

ST JAMES VETERANS HOME
620 N JEFFERSON ST
ST. JAMES, MISSOURI

PROJECT # U2309-01
SITE # 6801
FACILITY # 8136801012

REVISION: _____
 DATE: _____
 REVISION: _____
 DATE: _____
 REVISION: _____
 DATE: _____
 ISSUE DATE: 05/03/2024

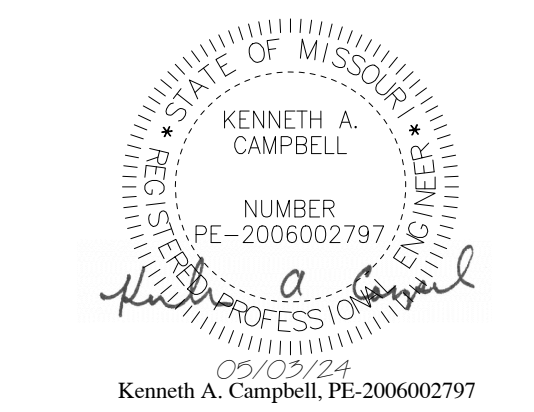
CAD DWG FILE: C-107
 DRAWN BY: JSM
 CHECKED BY: KAC
 DESIGNED BY: KAC

SHEET TITLE:
WATERLINE PLAN

SHEET NUMBER:

C-107

8 OF 12 SHEETS
05/03/2024



Corporate Authority:
CM Archer Group, P.C., E. 2682328745, E. 2684401787, D. A-201601179
310 East 6th Street, Suite 1000, Jefferson City, Missouri 64501 • Phone: 773-364-0200 • Fax: 773-364-4170 • www.archer-elgin.com

OFFICE OF ADMINISTRATION
DIVISION OF FACILITIES
MANAGEMENT,
DESIGN AND CONSTRUCTION

DEPARTMENT OF
PUBLIC SAFETY
VETERANS COMMISSION

IMPROVEMENTS TO WATER
& WASTEWATER SYSTEM
INFRASTRUCTURE

ST JAMES VETERANS HOME
620 N JEFFERSON ST
ST. JAMES, MISSOURI

PROJECT # U2309-01
SITE # 6801
FACILITY # 8136801012

REVISION: _____
DATE: _____
REVISION: _____
DATE: _____
REVISION: _____
DATE: _____
ISSUE DATE: 05/03/2024

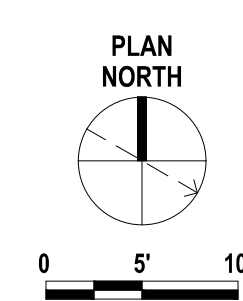
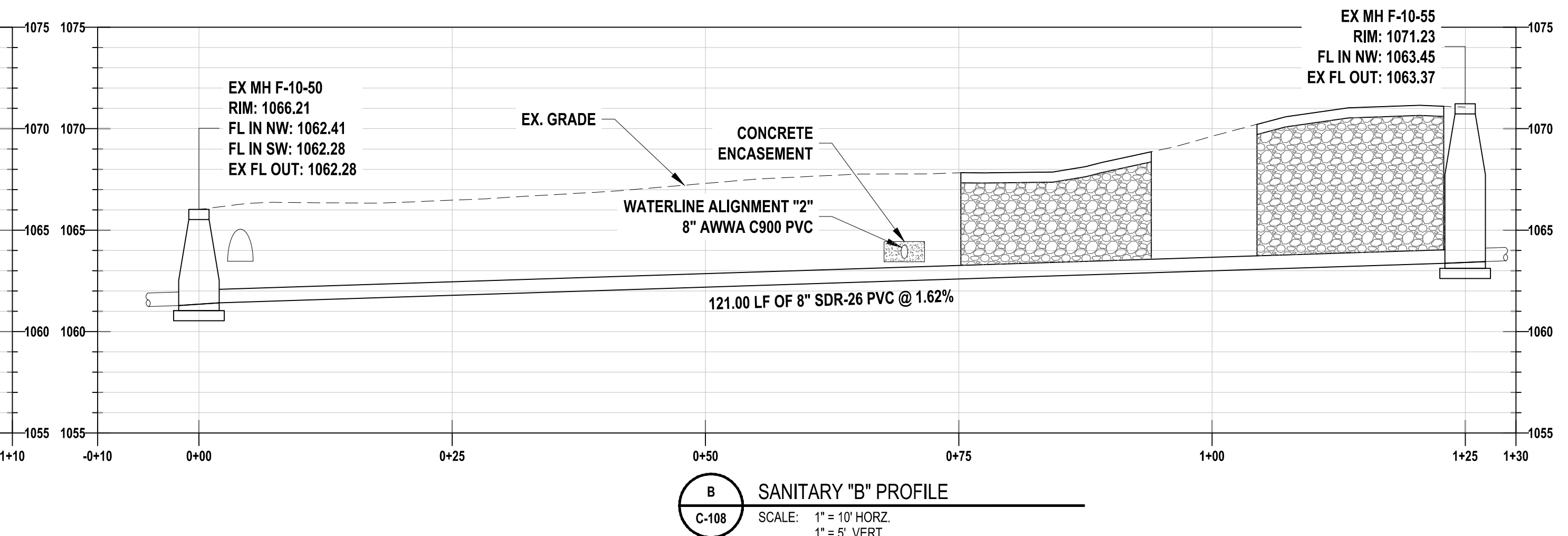
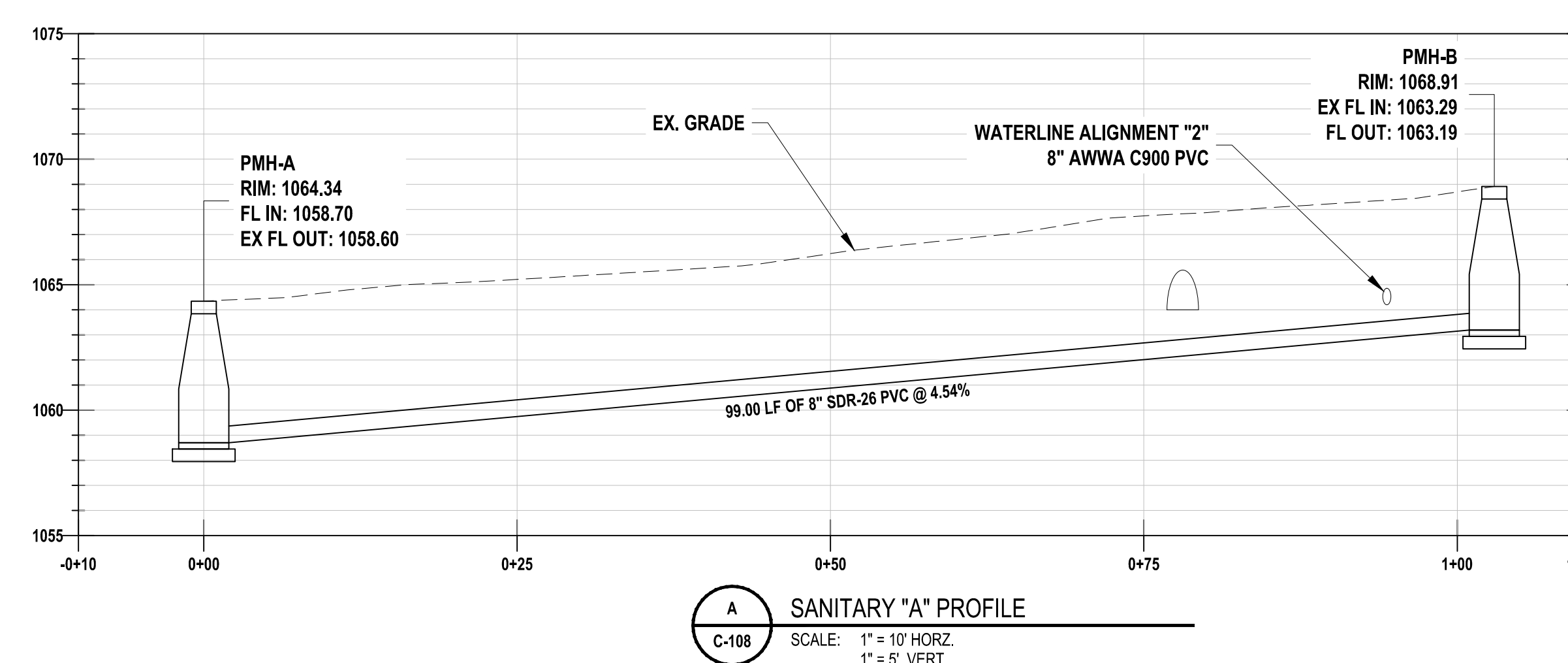
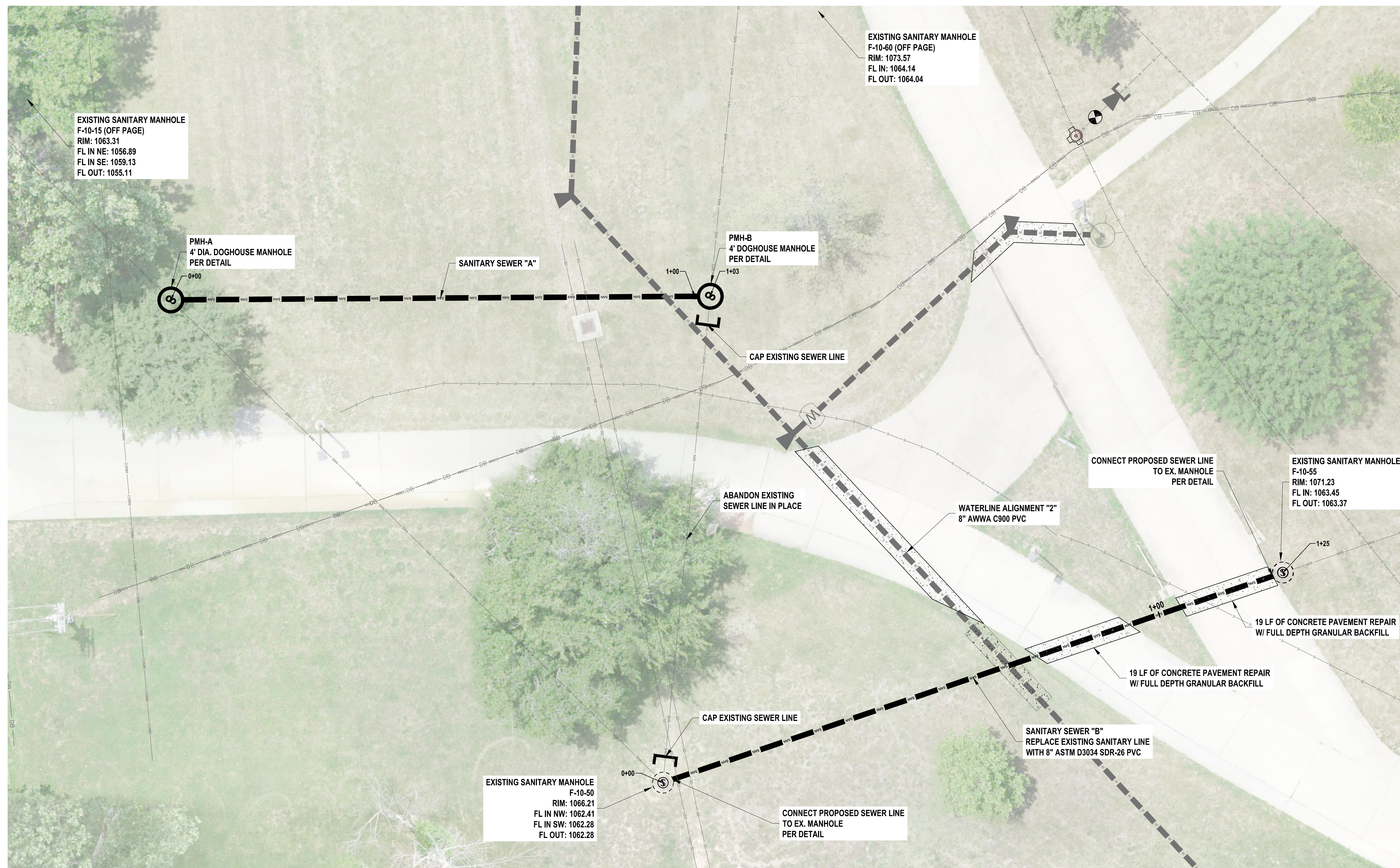
CAD DWG FILE: C-108
DRAWN BY: JSM
CHECKED BY: KAC
DESIGNED BY: KAC

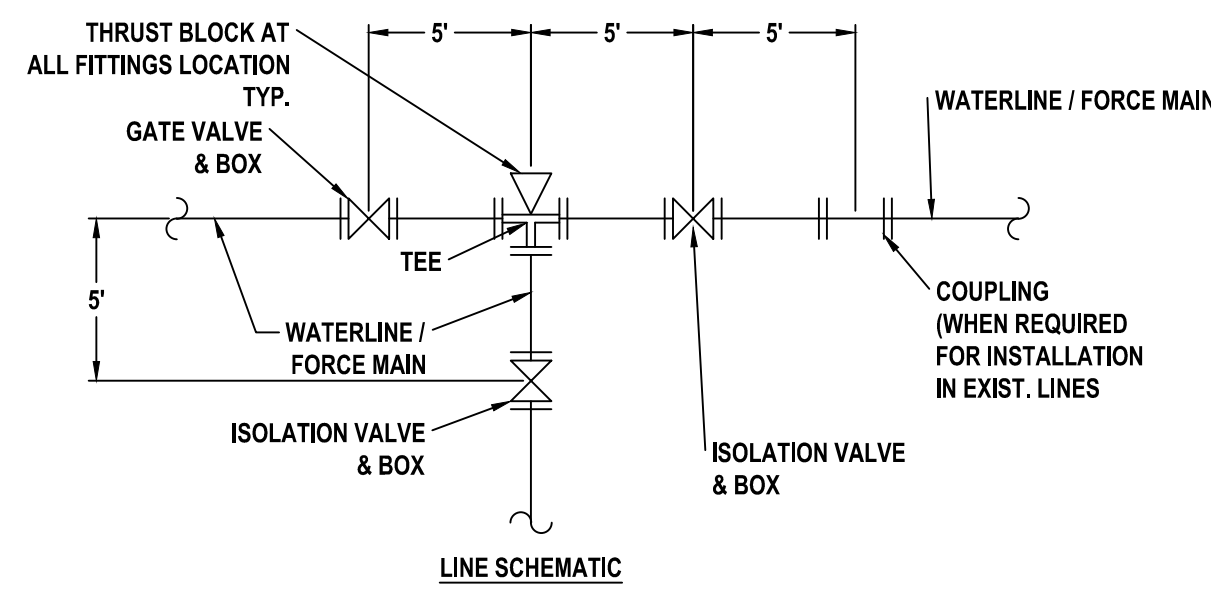
SHEET TITLE:
**SANITARY PLAN &
PROFILE**

SHEET NUMBER:

C-108

9 OF 12 SHEETS
05/03/2024

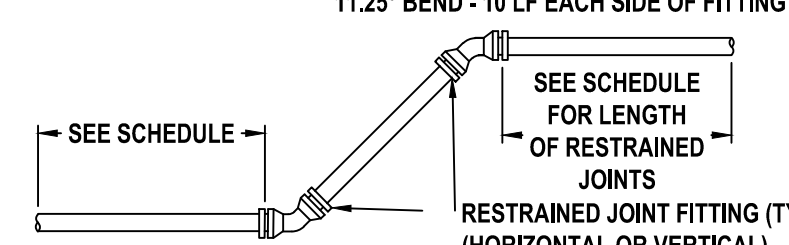




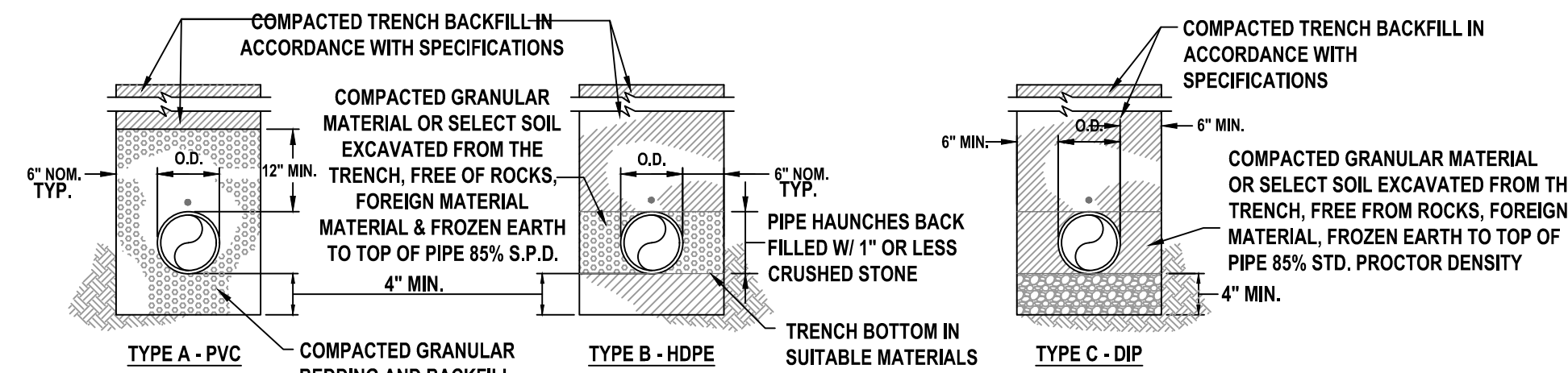
SEE PLAN SHEETS FOR REQUIRED FITTING TYPES AND VALVE INSTALLATIONS FOR SPECIFIC CONNECTIONS, BRANCHES AND CONNECTIONS TO EXISTING SYSTEMS. NOT ALL FITTINGS AND/OR VALVES SHOWN IN THE SCHEMATIC MAY BE REQUIRED AT ALL LOCATIONS.

TYPICAL VALVE / FITTING LOCATION DETAIL
NOT TO SCALE

SCHEDULE
90° BEND - 60 LF EACH SIDE OF FITTING
45° BEND - 30 LF EACH SIDE OF FITTING
22.5° BEND - 20 LF EACH SIDE OF FITTING
11.25° BEND - 10 LF EACH SIDE OF FITTING



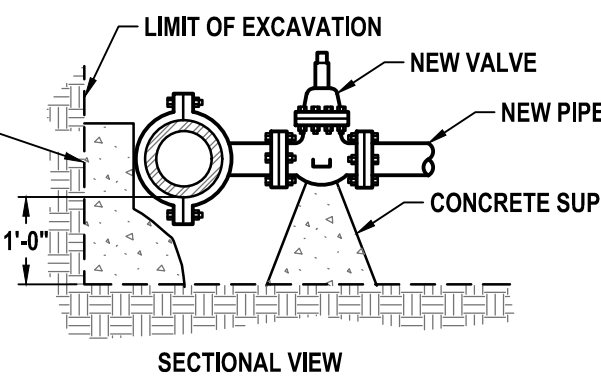
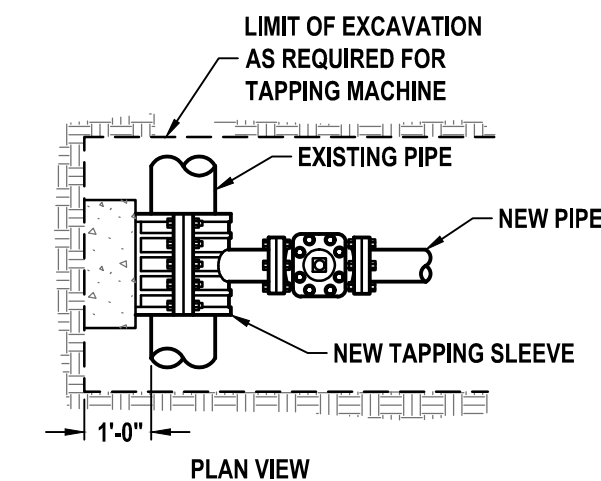
TYPICAL RESTRAINED JOINT PIPE DETAIL / SCHEDULE
NOT TO SCALE



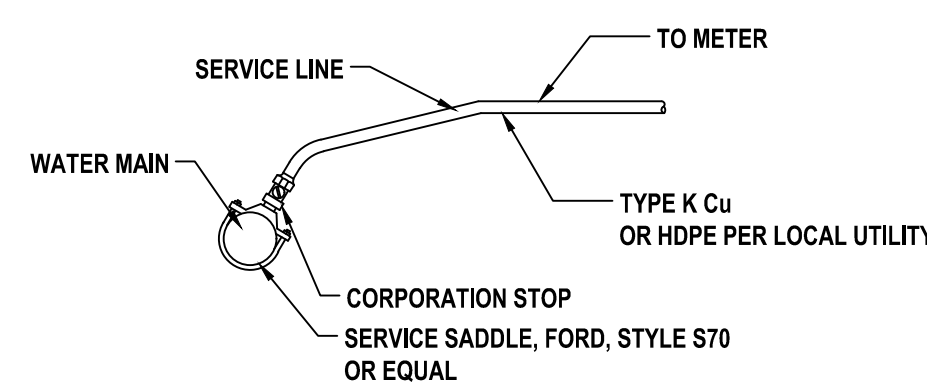
FORCE MAIN NOTE:

1. NO BEDDING REQUIRED FOR HDPE IN SUITABLE SOILS.
2. SUITABLE SOILS ARE MATERIALS FREE OF ROCKS OR FOREIGN MATERIALS GREATER THAN 1-1/2" Ø.
3. PLACE TRACER WIRE ALONG TOP OF ALL PIPING.
4. INSTALL UNDER GROUND WARNING MARKING TAPE INSTALL 18" BELOW FINISHED GRADE.

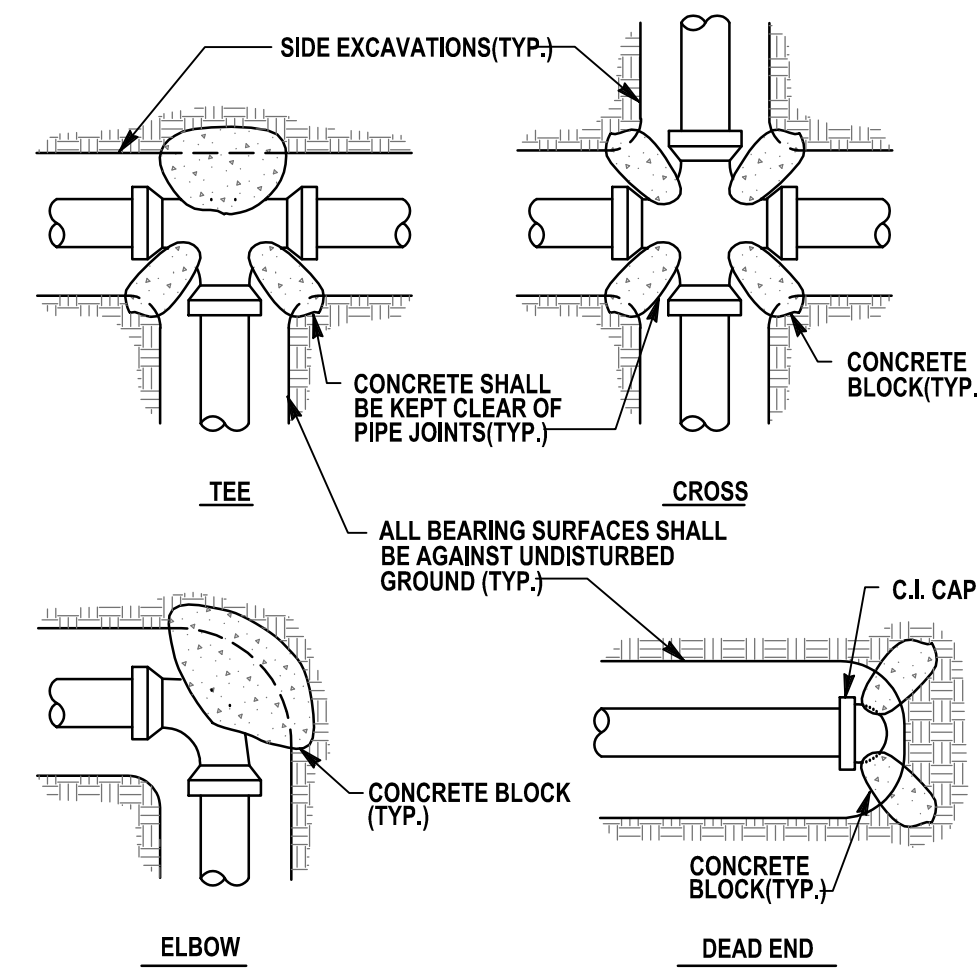
OUT OF TRAFFIC PIPE INSTALLATION DETAIL
NOT TO SCALE



TAPPING SLEEVE AND VALVE INSTALLATION DETAIL
NOT TO SCALE

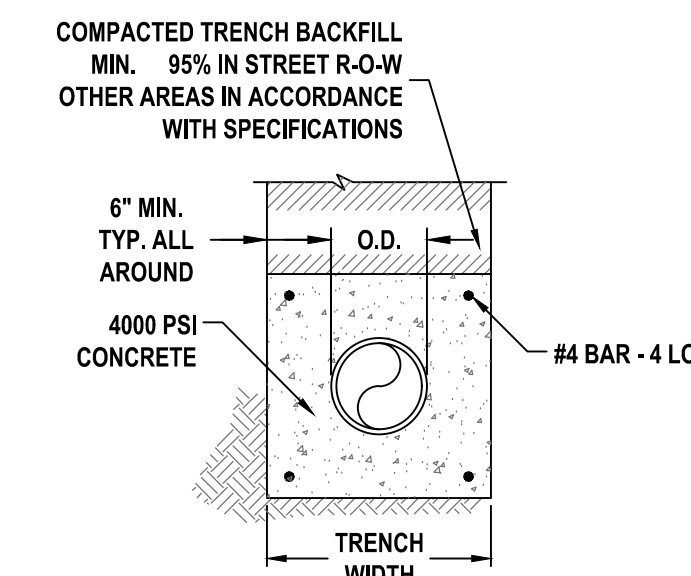


TYPICAL SERVICE CONNECTION DETAIL
NOT TO SCALE



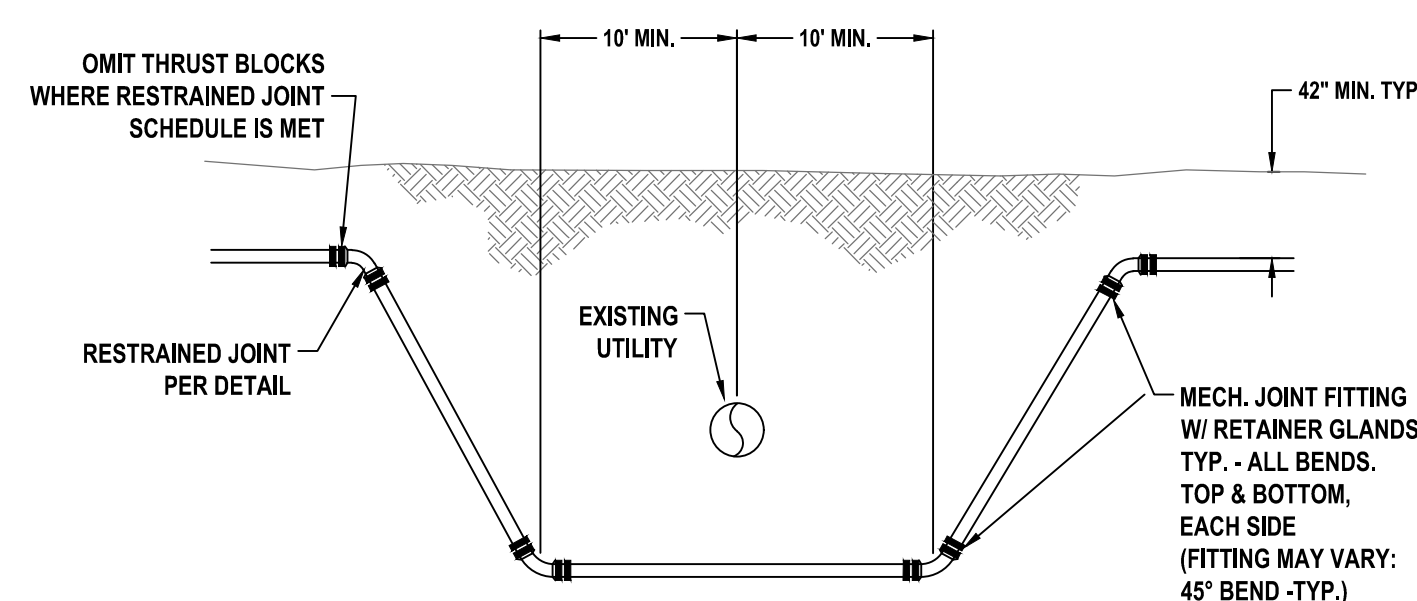
PIPE SIZE	BEARING AREAS EACH DIRECTION OF THRUST IN SQUARE FEET			
	TEES & DEADENDS	90° ELBOWS	45° ELBOW CROSSES IN DIRECTION OF FLOW	22-1/2° ELBOWS
6"	4.0	5.5	3.0	2.0
8"	7.0	9.5	5.0	3.0
10"	9.5	13.5	7.0	4.0
12"	13.5	19.0	10.0	5.0
14"	18.0	23.5	14.0	7.0
16"	23.0	33.0	18.0	9.0

THRUST BLOCK INSTALLATION DETAIL
NOT TO SCALE

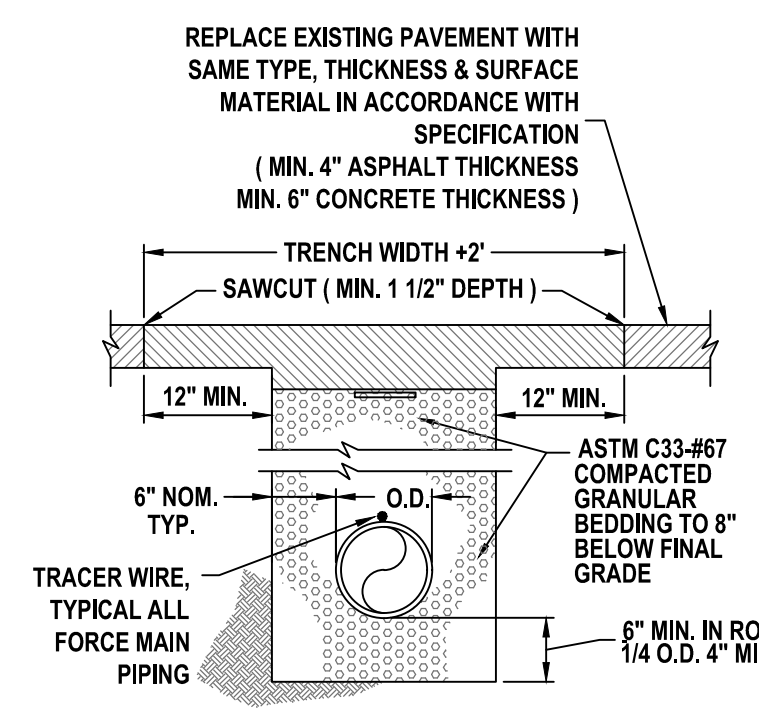


- NOTES:**
1. BLOCK UP PIPE TO PROVIDE MINIMUM CLEARANCE INDICATED.
 2. CONTRACTOR SHALL INSTALL TIE DOWNS TO PREVENT FLOATING.

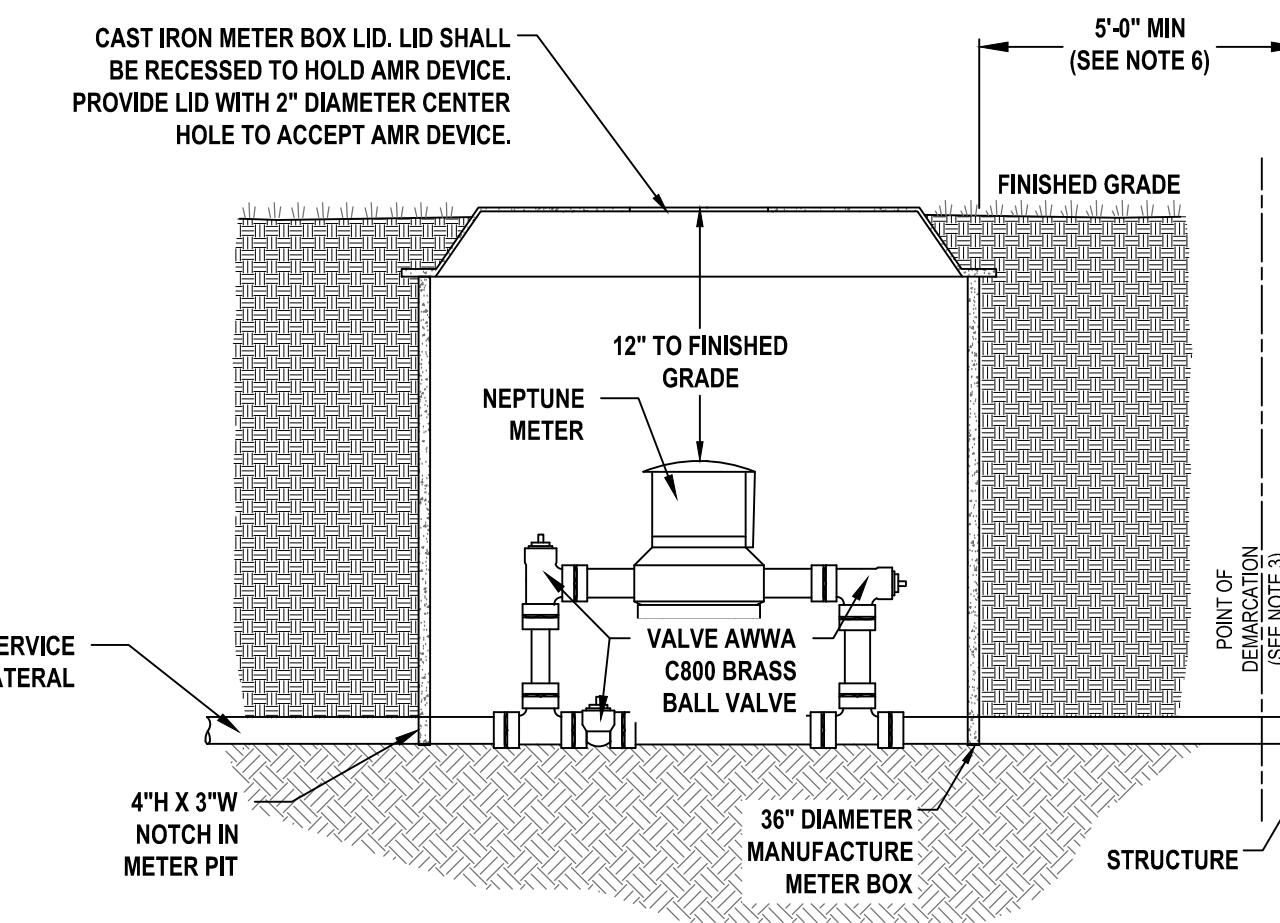
CONCRETE ENCASEMENT DETAIL
NOT TO SCALE



VERTICAL BEND DETAIL
NOT TO SCALE



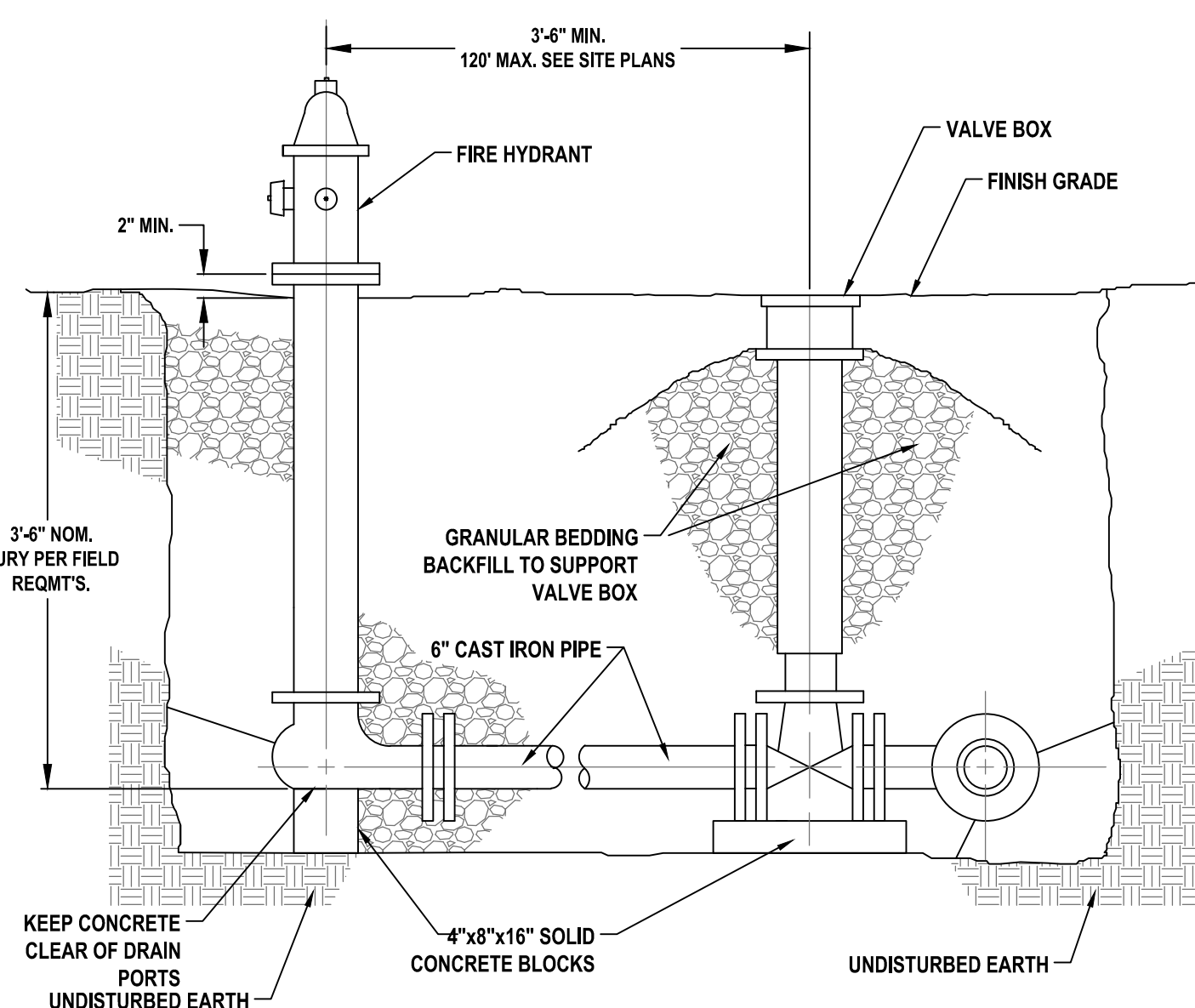
PAVEMENT RESTORATION DETAIL
NOT TO SCALE



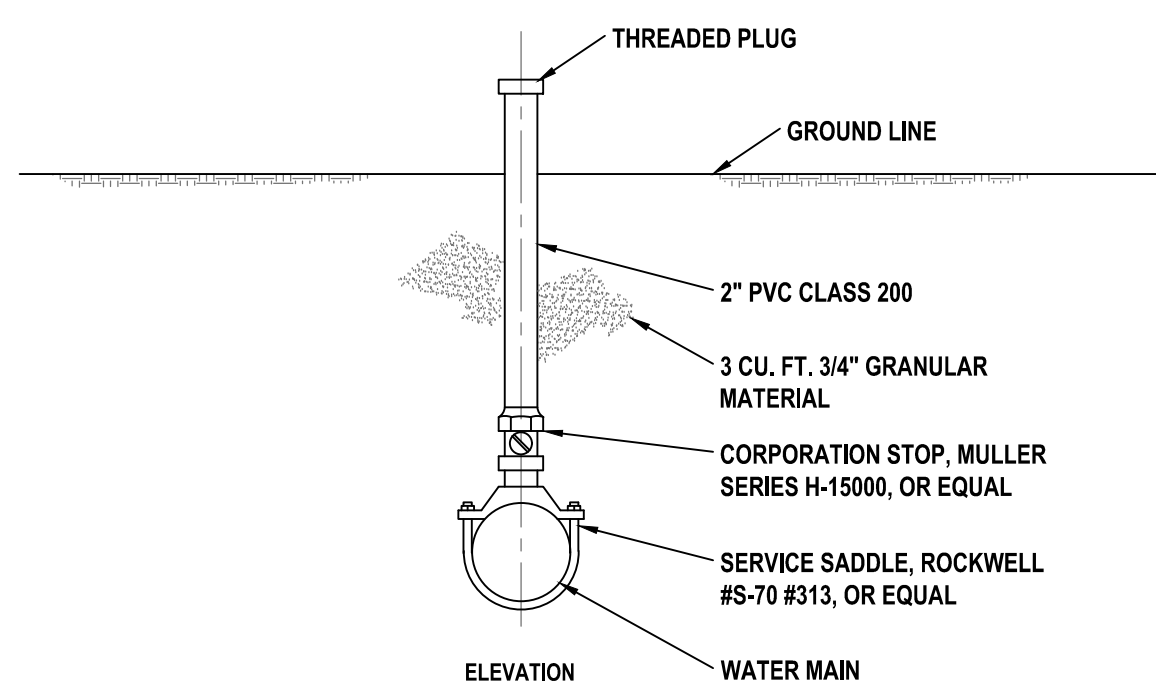
NOTES:

1. CENTER METER IN BOX, MIN 6" CLEARANCE ON ALL SIDES
2. TRENCH, INSTALL AND BACKFILL SERVICE LINE IN ACCORDANCE WITH AW SPECIFICATIONS.
3. POINT OF DEMARCATION FOR SERVICE LINE OWNERSHIP PER PRIME CONTRACT BETWEEN AW AND GOVERNMENT.
4. SERVICE LINE MATERIALS SHALL MEET AW SPECIFICATIONS
5. PROVIDE TRACE WIRE ALONG WATER SERVICE LINE. TRACE WIRE SHALL EXTEND INTO THE METER PIT AND TERMINATE IN THE METER PIT.
6. IF WATER SERVICE BETWEEN MAIN AND WATER METER IS REPLACED WITH NON-METALIC PIPING, THERE SHALL BE A MINIMUM LENGTH OF TEN (10) FT OF METALIC PIPING BETWEEN THE BUILDING STRUCTURE AND METER PIT TO MAINTAIN PROPER GROUNDING OF BUILDING'S ELECTRICAL SYSTEM.

2" WATER SERVICE INSTALLATION



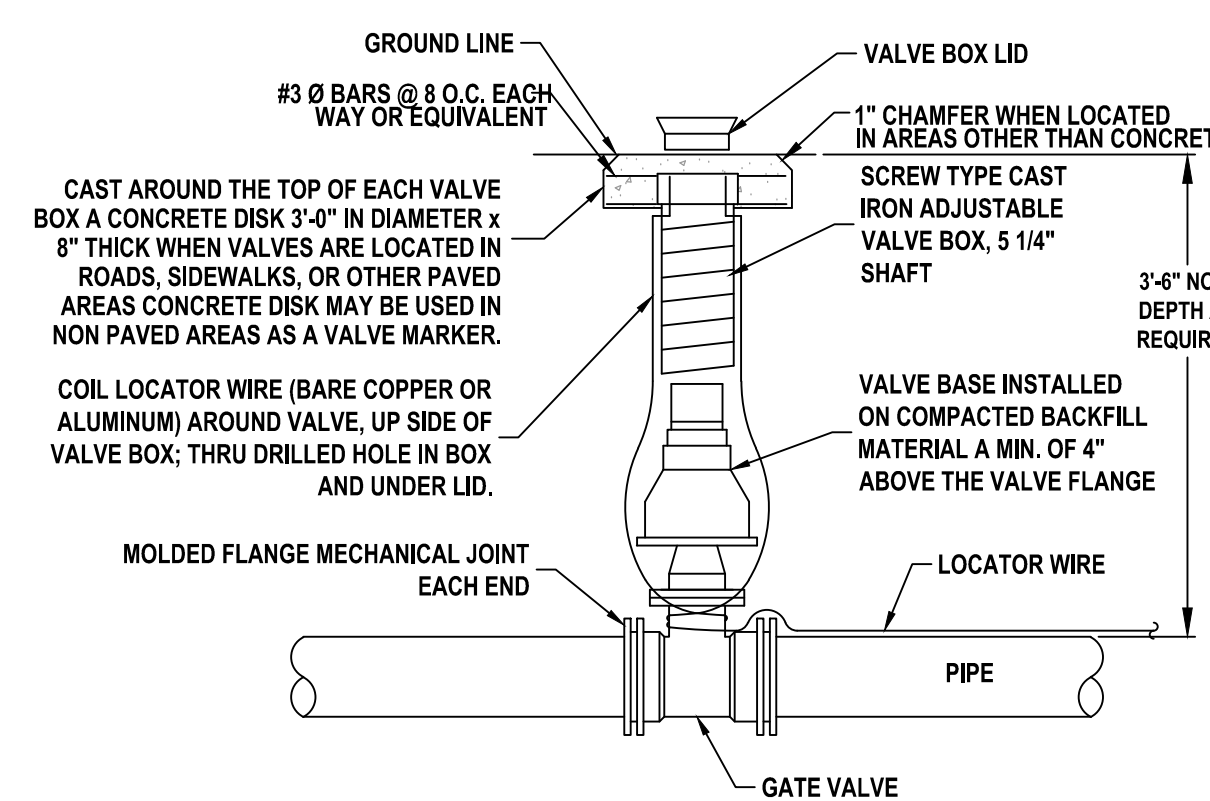
FIRE HYDRANT ASSEMBLY DETAIL
NOT TO SCALE



NOTES:

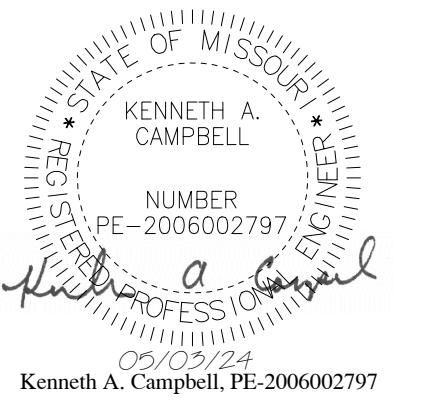
1. CHLORINE INJECTION PORT TO BE LOCATED WITHIN 10-FOOT DOWNSTREAM FROM THE BEGINNING OF THE NEW MAIN.
2. CALCIUM HYPOCHLORITE SOLUTION SHALL BE INJECTED INTO PORT DURING CLEANING AND DISINFECTION OF LINE USING THE CONTINUOUS FEED METHOD. SEE SECTION 18160 OF SPECIFICATIONS.

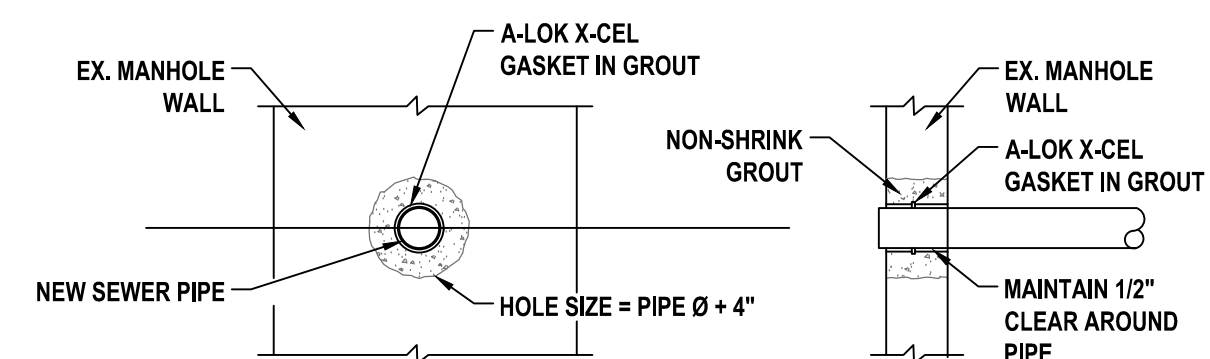
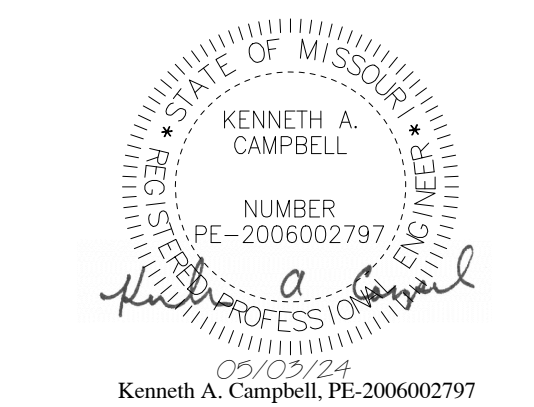
CHLORINE INJECTION PORT DETAIL
NOT TO SCALE



- NOTE:**
- WHERE GATE VALVES ARE INSTALLED ADJACENT TO TEES, GATE VALVES SHALL BE RESTRAINED BACK TO TEE.

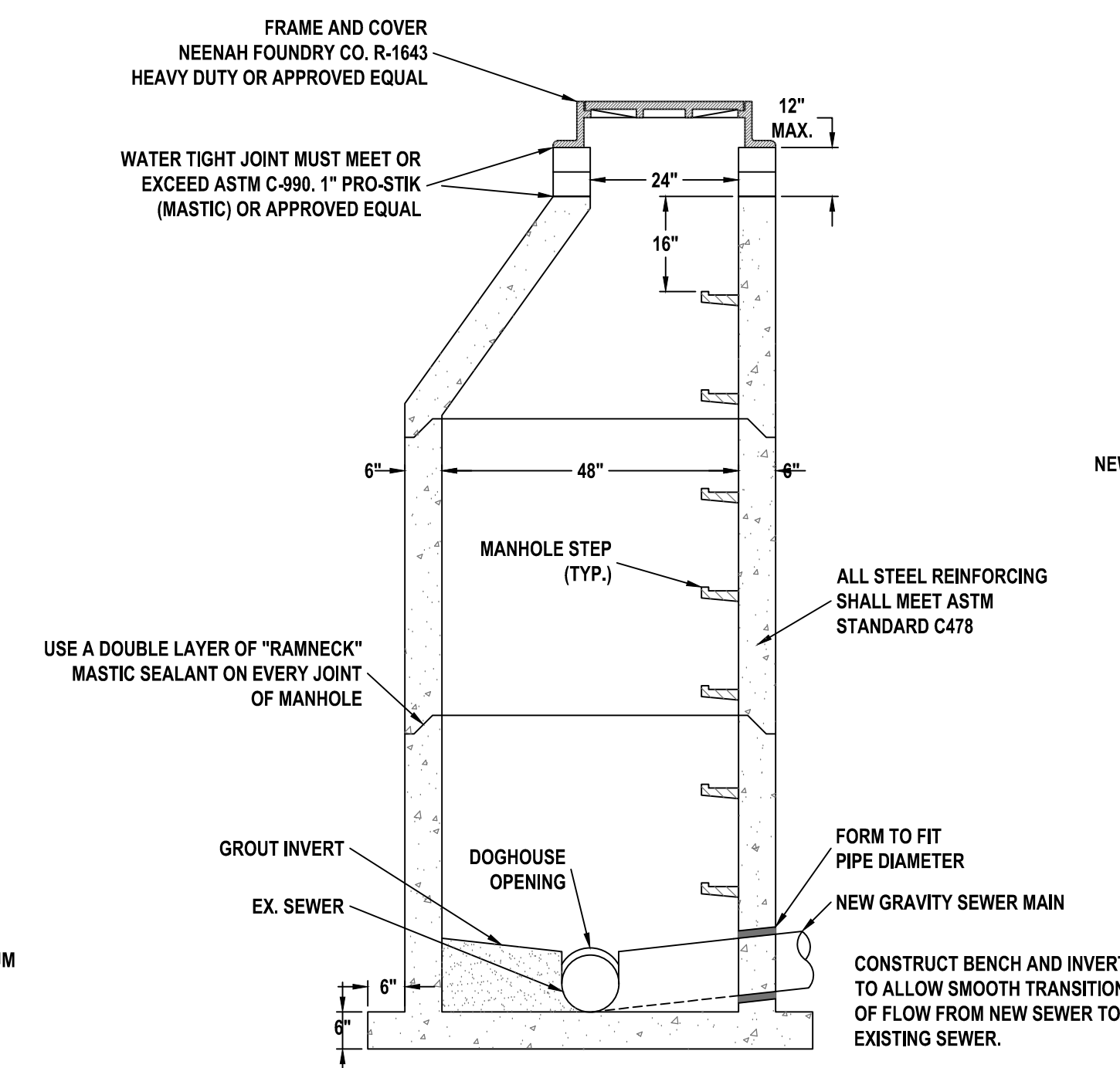
GATE VALVE DETAIL
NOT TO SCALE





1. PROVIDE 1/2" GAP ALL AROUND PIPE.
2. COMPACT BEDDING AND TRENCH BACKFILL MATERIALS TO 95% STANDARD PROCTOR DENSITY.
3. NO GROUT SHALL BE ALLOWED WITHIN THE RUBBER GASKET MOVEMENT AREA.

NEW SEWER MAIN CONNECTION TO EXISTING MANHOLE
NOT TO SCALE

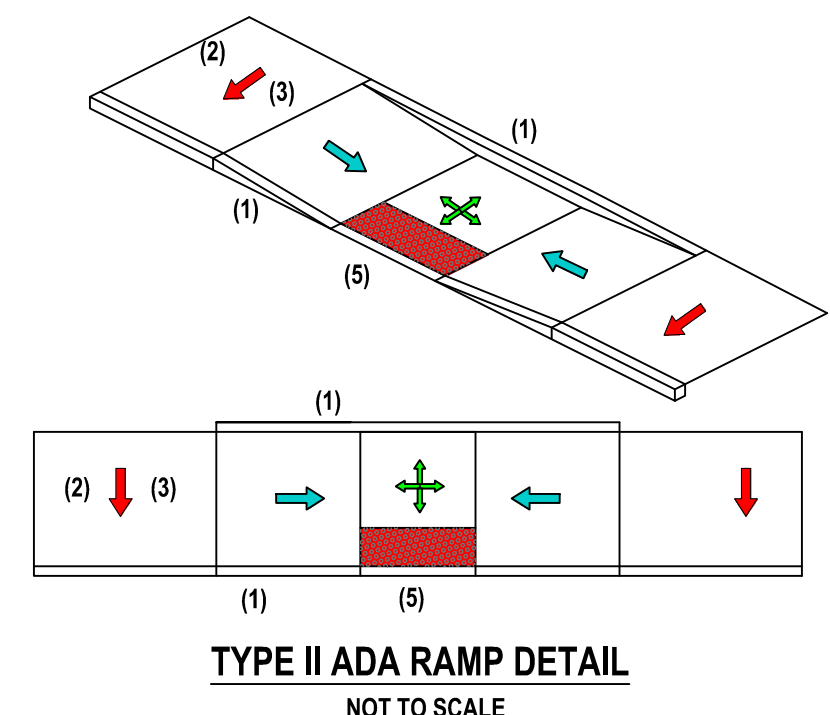
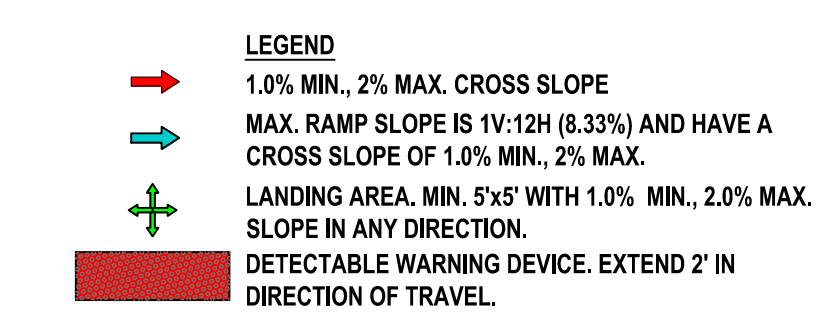


- NOTES:
- 1) ALL STEEL REINFORCING SHALL MEET ASTM C478
 - 2) ENTIRE EXTERIOR SURFACE OF MANHOLE SHALL BE WATER PROOFED BEFORE BACKFILLING IS COMMENCED (SEE SPECS).
 - 3) HOLES IN PRECAST ARE TO BE 4" MIN. AND 8" MAX. LARGER THAN EXISTING AND PROPOSED SEWER LINES.
 - 4) ANNULUS BETWEEN EXISTING SEWER LINE AND DOGHOUSE OPENING SHALL BE FILLED W/NON-SHRINK GROUT.
 - 5) EXISTING SEWER SHALL NOT BE TAPPED WITHOUT PRIOR WRITTEN APPROVAL FROM THE CITY.
 - 6) SEE PLAN & PROFILES FOR PIPE INVERT ELEVATIONS.

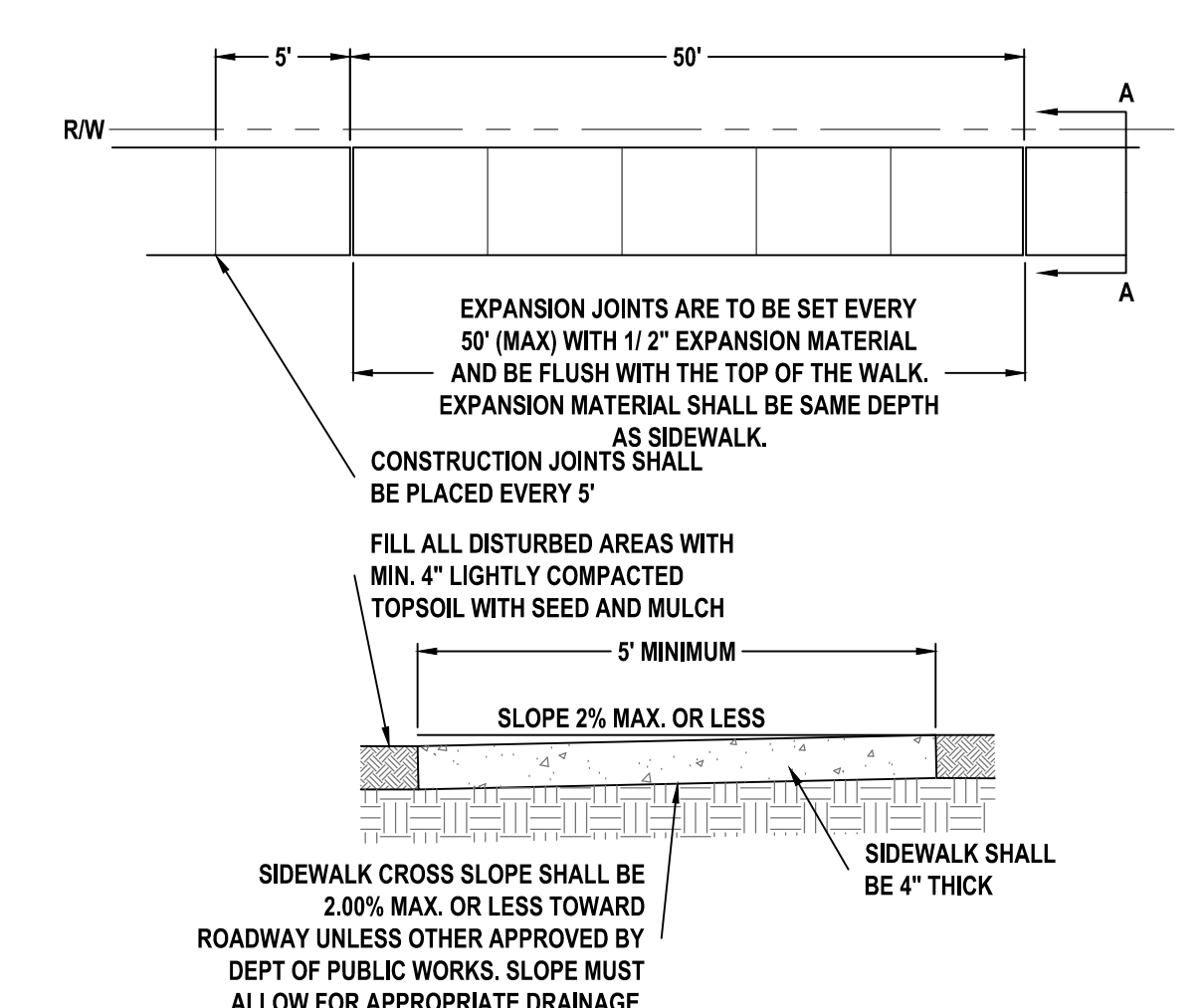
DOGHOUSE MANHOLE
NOT TO SCALE

- CURB RAMP NOTES:**
- (1) VARIABLE CURB HEIGHT. CURB MAY BE ELIMINATED IF UNNECESSARY AND APPROVED BY THE ENGINEER.
 - (2) CROSS SLOPE TO BE A MAXIMUM OF 2.0%.
 - (3) MATCH EXISTING WIDTH OF SIDEWALK.
 - (4) FLARE MAX. SLOPE IS 1V:10H WHEN MEASURED PARALLEL TO CURB LINE.
 - (5) MATCH EXISTING ROAD GRADE.
 - (6) ENSURE ADEQUATE DRAINAGE OF LANDING AREA. SLOPES SHALL NOT CREATE A LANDING AREA THAT HOLDS WATER.

- CURB RAMP GENERAL NOTES:**
- A. ALL AREAS OF THE PEDESTRIAN ACCESS ROUTE MUST BE COMPLIANT WITH THE "AMERICANS WITH DISABILITIES ACT ACCESSIBILITY GUIDELINES "ADAAG") EXCEPTIONS MUST BE APPROVED BY THE ENGINEER.
 - B. FINISHED SIDEWALK SHALL BE STABLE, SLIP RESISTANT AND SURFACE DOES NOT POND WATER.
 - C. SIDEWALK AND RAMP CROSS SLOPES SHALL BE A MINIMUM OF 1.0% TO FACILITATE DRAINAGE AND A MAX. OF 2.0% TO BE USABLE FOR DISABLED INDIVIDUALS.
 - D. STORM WATER INLETS, SIGNS, POSTS, MANHOLE COVERS, PULL BOXES AND OTHER ACCESS LIDS SHOULD BE AVOIDED WITHIN THE SIDEWALK. IF SUCH A LOCATION IS NECESSARY, THE FEATURE MUST MEET ADA STANDARDS.
 - E. THE RUNNING GRADE OF A SIDEWALK SHALL NOT EXCEED 5.0% UNLESS IT IS MATCHING THE GRADE OF THE ADJACENT ROADWAY.



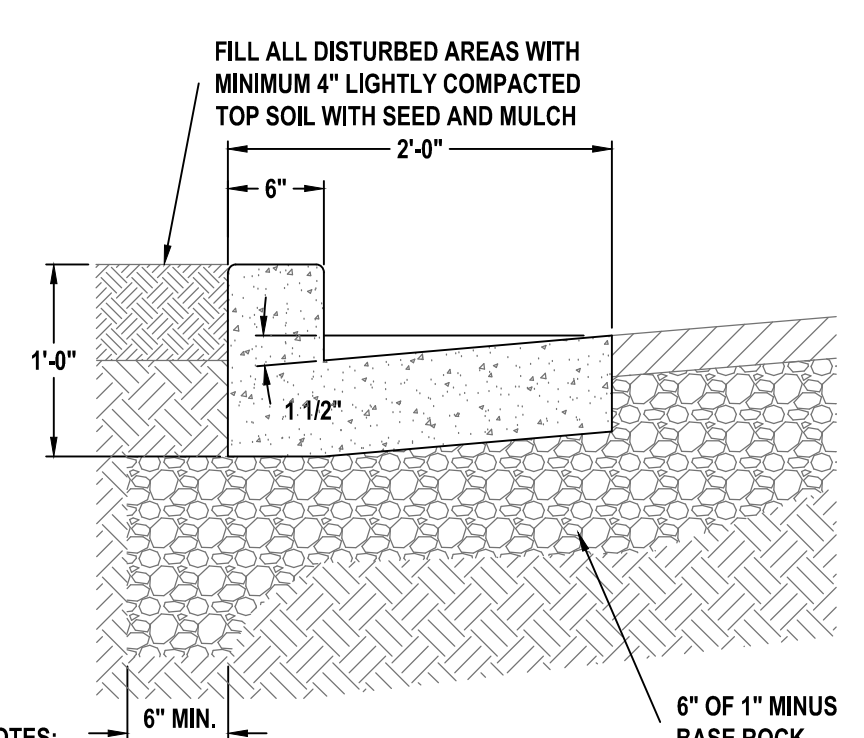
TYPE II ADA RAMP DETAIL
NOT TO SCALE



SECTION A-A

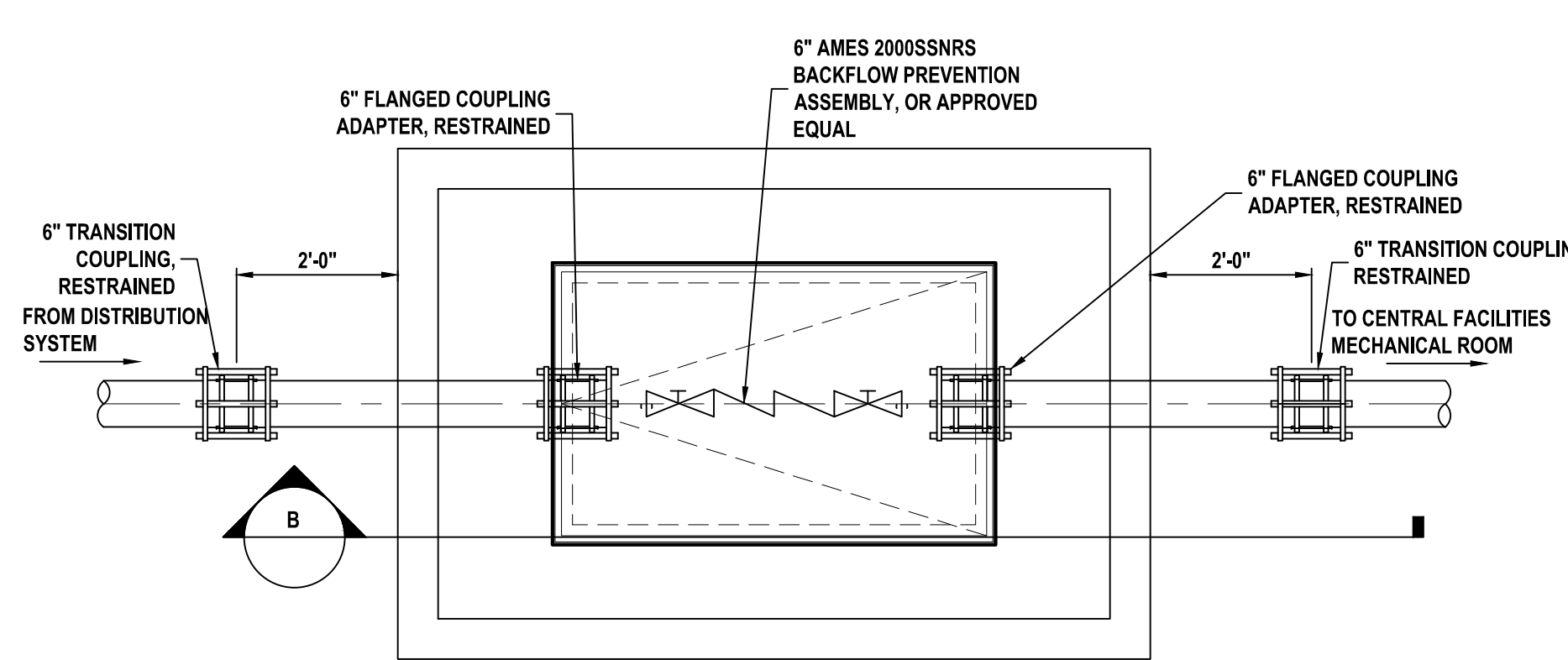
- NOTES:
- 6 BAG CONCRETE MIX (4,000 PSI) SHALL BE USED ON ALL SIDEWALK.
 - ALL FILL UNDER SIDEWALK SHALL BE TO 95% COMPACTION NONORGANIC MATERIAL APPROVED BY DEPARTMENT OF PUBLIC WORKS.
 - WHEN CROSSING THE WIDTH OF A DRIVEWAY, SIDEWALK SHALL BE 6" THICK CONCRETE WITH 6" OF 1" CLEAN ROCK UNDERNEATH.

CONCRETE SIDEWALK DETAIL
NOT TO SCALE

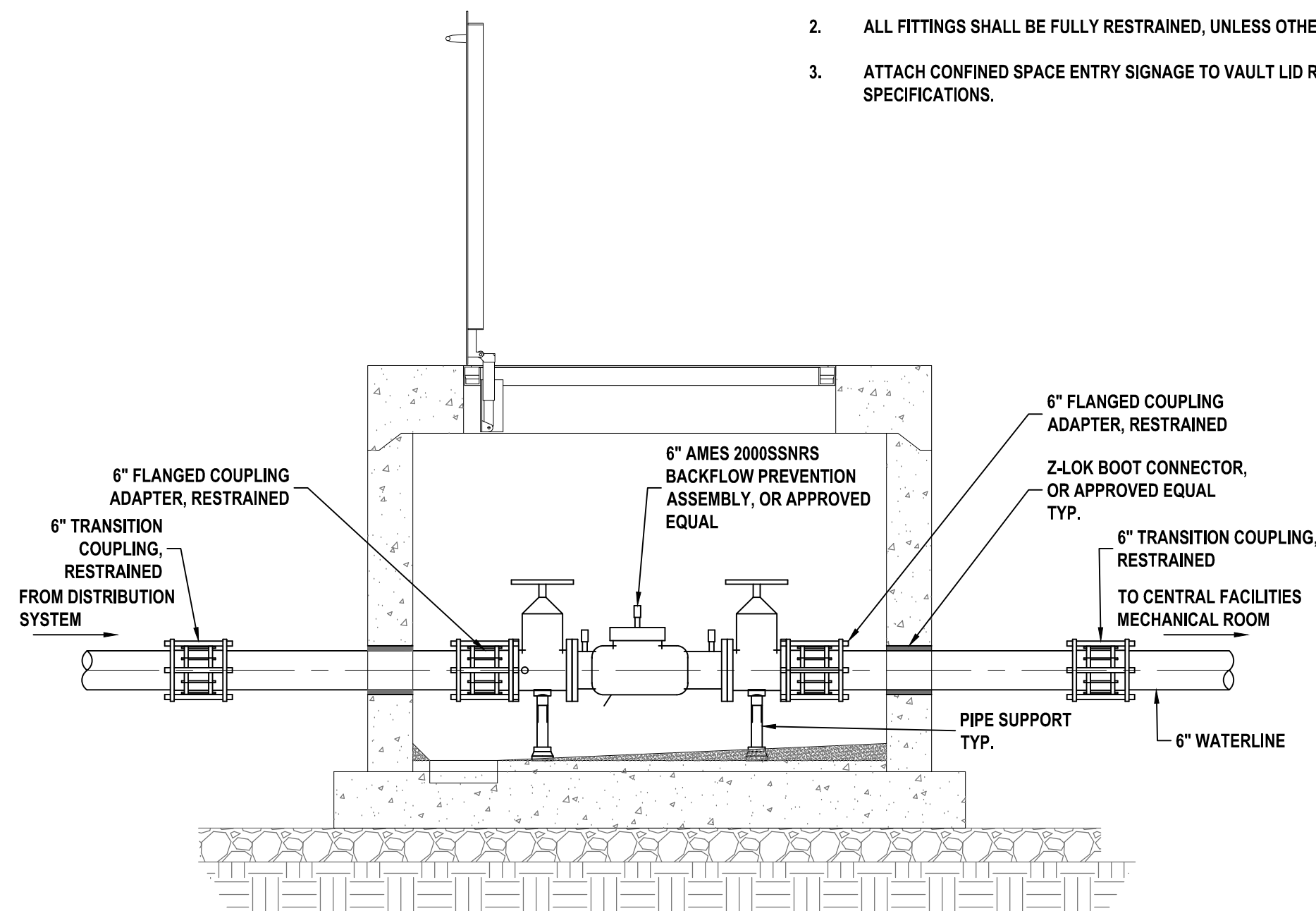


- NOTES:
- CONCRETE SHALL BE 6 BAG MIX (4,000 PSI) WITH SLUMP TEST LIMITS OF NOT LESS THAN 1 INCH NOR MORE THAN 4 INCHES.
 - WHERE CURB IS PLACED WITHOUT STREET IMPROVEMENT, A MIN. OF 6 INCHES BASEROCK IS REQUIRED AT NOT LESS THAN 95% STANDARD PROCTOR TEST AT OPTIMUM MOISTURE CONTENT.
 - 1/2" PREMOLDED EXPANSION JOINT PLACED EVERY 100 FT. (MIN.) THROUGH ENTIRE CROSS SECTION OF CURB.
 - CONSTRUCTION JOINTS SHALL BE PLACED EVERY 10 FT.
 - CONCRETE TO HAVE LIGHT BRUSH FINISH AND 1/4" R EDGE ON EXPOSED CORNERS.

CURB & GUTTER DETAIL
NOT TO SCALE

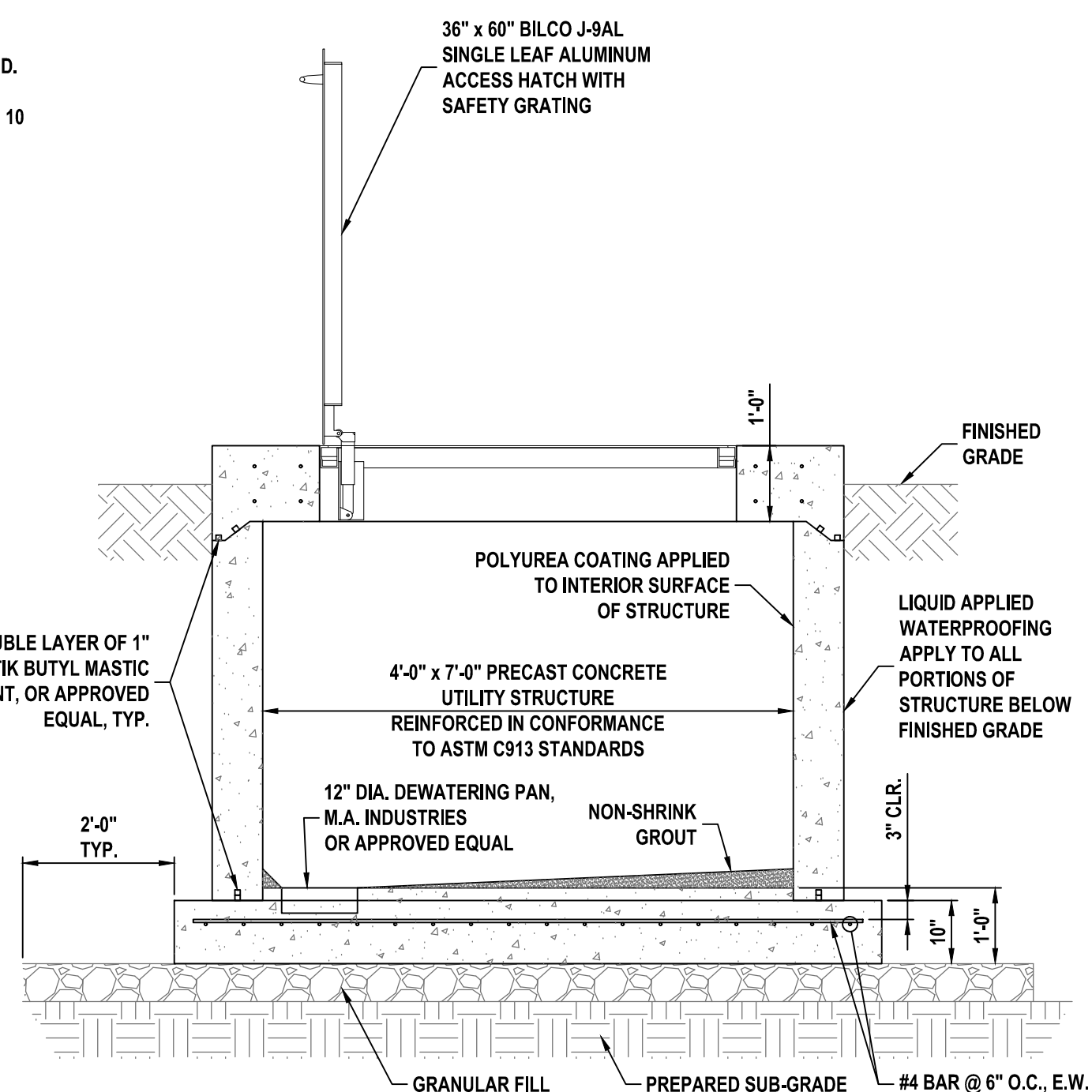


- NOTES:
1. POLYUREA COATING SYSTEM:
APPLY TWO COMPONENT AROMATIC POLYUREA COATING TO THE INTERIOR WALLS AND FLOOR OF THE VAULT, PROVIDING A MONOLITHIC LINING OF THE VAULT.
COATING SYSTEM SHALL BE INSTALLED AFTER THE INSTALLATION OF NON-SHRINK GROUT IN THE FLOOR. REFERENCE DIVISION 9 SPECIFICATIONS FOR SPECIFIC COATING SYSTEM REQUIREMENTS.
 2. ALL FITTINGS SHALL BE FULLY RESTRAINED, UNLESS OTHERWISE NOTED.
 3. ATTACH CONFINED SPACE ENTRY SIGNAGE TO VAULT LID REF: DIVISION 10 SPECIFICATIONS.



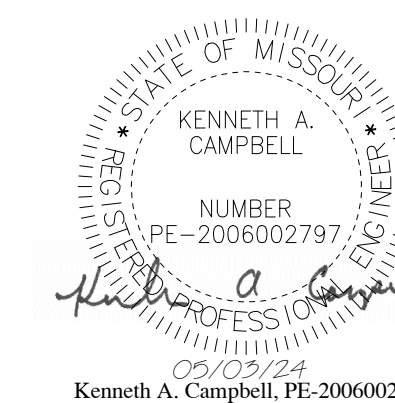
SECTION B

BACK FLOW PREVENTER DETAIL
NOT TO SCALE



SECTION A

DOGHOUSE MANHOLE DETAIL
NOT TO SCALE



CM Archer Group, P.C. dba:



Corporate Authority:
CM Archer Group, P.C., E. 26828281st St., St. Louis, MO 63117, D. A-2016017179
310 East 6th Street, Suite 1000, Missouri 64101 Phone: 314-364-6200 Fax: 314-364-4141 www.archer-eglin.com

OFFICE OF ADMINISTRATION
DIVISION OF FACILITIES
MANAGEMENT,
DESIGN AND CONSTRUCTION

DEPARTMENT OF
PUBLIC SAFETY
VETERANS COMMISSION

IMPROVEMENTS TO WATER
& WASTEWATER SYSTEM
INFRASTRUCTURE

ST JAMES VETERANS HOME
620 N JEFFERSON ST
ST. JAMES, MISSOURI

PROJECT # U2309-01
SITE # 6801
FACILITY # 8136801012

REVISION: _____
DATE: _____
REVISION: _____
DATE: _____
REVISION: _____
DATE: _____

ISSUE DATE: 05/03/2024

CAD DWG FILE: C-503
DRAWN BY: JSM
CHECKED BY: KAC
DESIGNED BY: KAC

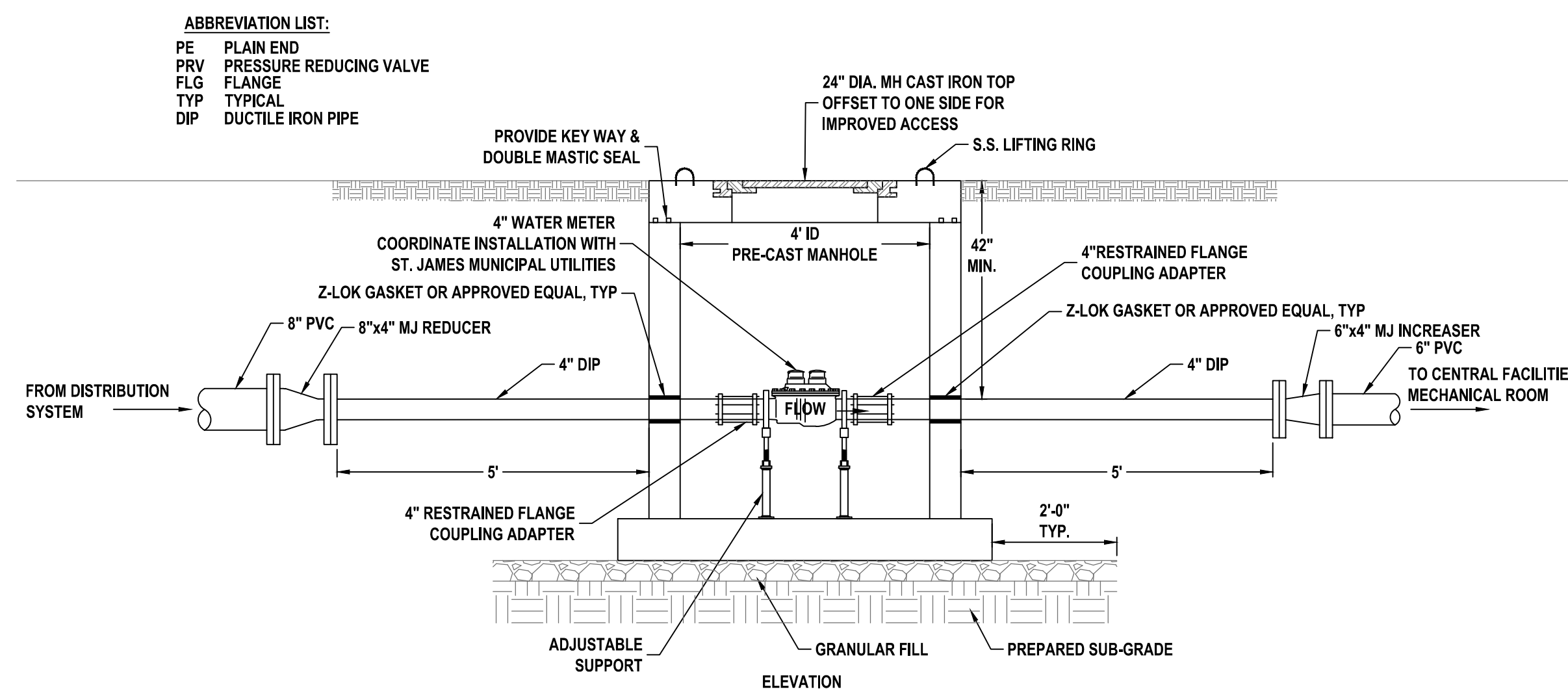
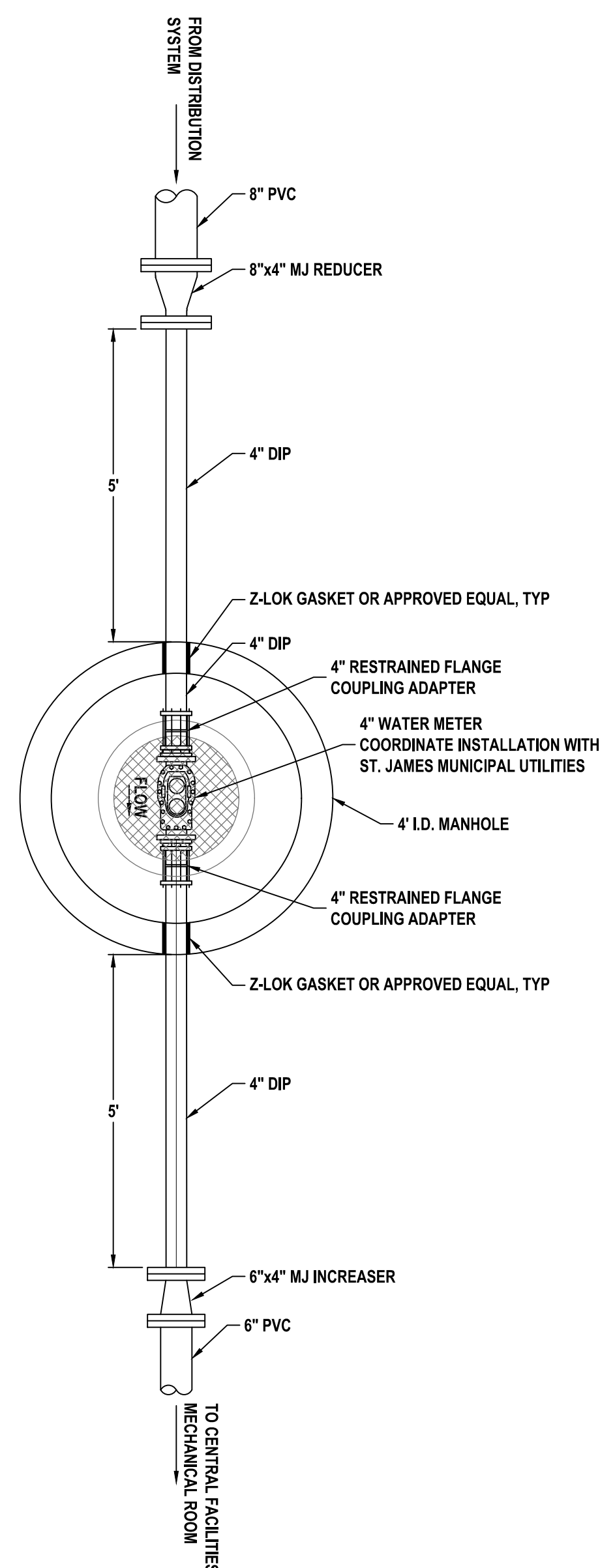
SHEET TITLE:

CIVIL DETAILS

SHEET NUMBER:

C-503

12 OF 12 SHEETS
05/03/2024



4" WATER METER DETAIL
NOT TO SCALE