

## Addendum No. 02

**TO: PLANS AND SPECIFICATIONS FOR STATE OF MISSOURI**

Six New Full Service Cabins  
Johnson's Shut-Ins State Park  
Middle Brooke, MO  
Project No: X2206-01

Bid Opening Date: 1:30 PM, Thursday, June 29, 2023 **(Changed per Addendum 01)**

---

**Bidders are hereby informed that the construction Plans and/or Specifications are modified as follows:**

### **SPECIFICATION CHANGES:**

1. NONE

### **DRAWING CHANGES:**

1. Sheet A1.3 – See Attached Revised Sheet A1.3

- a. ADD Keyed Note EH-1 as follows:

EH-1	Exhaust Hood (OFCl)
------	---------------------

- b. ADD Keyed Note EH-1 as follows:

RAN-1	ADA Range with Exhaust Hood (OFOI)
-------	------------------------------------

2. Sheet C4.0 – See Attached Revised Sheet C4.0

- a. REVISE Site Improvement Plan to widen the roadway asphalt pavement from 8-feet to 10-feet between road stations 1+00 and 5+00.

3. Sheet C5.0 – See Attached Revised Sheet C5.0

- a. REVISE Site Improvement Plan to widen the roadway asphalt pavement from 8-feet to 10-feet between road stations 1+00 and 5+00.

4. Sheet C13.0 – See Attached Revised Sheet C13.0

- a. REVISE Site Improvement Plan to widen the roadway asphalt pavement from 8-feet to 10-feet between road stations 1+00 and 5+00.

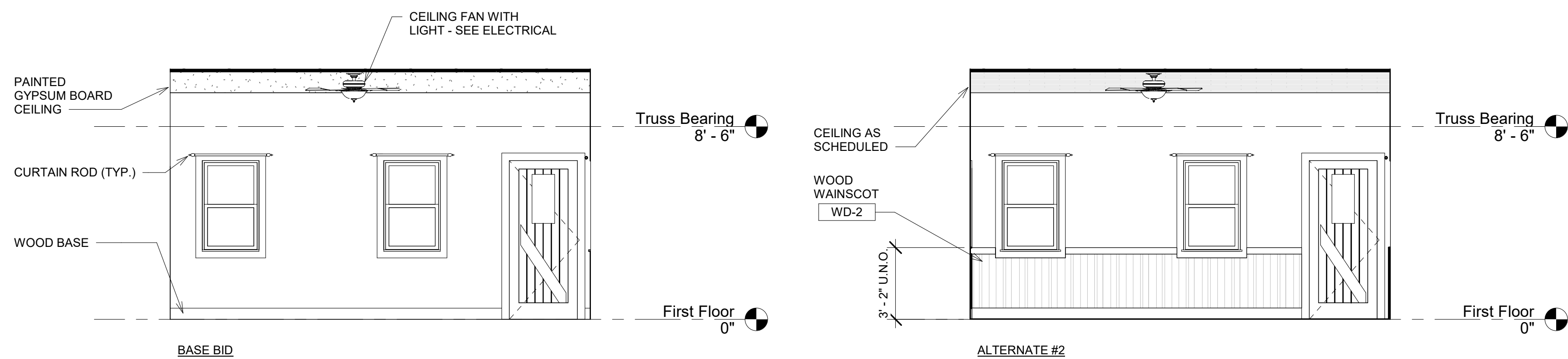
**GENERAL:**

1. NONE

**1. ATTACHMENTS:**

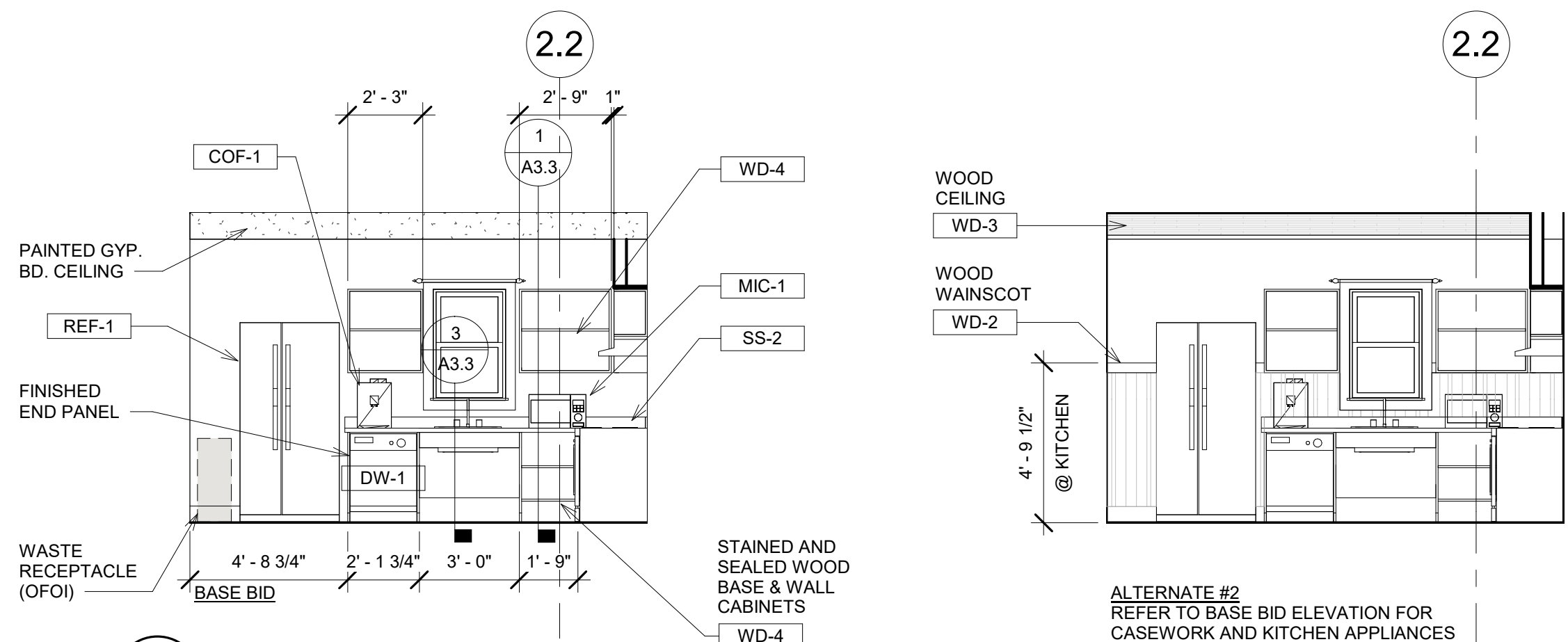
- A. A1.3 Addendum 01 Revision (1 Page)
- B. C4.0 Addendum 01 Revision (1 Page)
- C. C5.0 Addendum 01 Revision (1 Page)
- D. C13.0 Addendum 01 Revision (1 Page)

**END OF ADDENDUM 02**

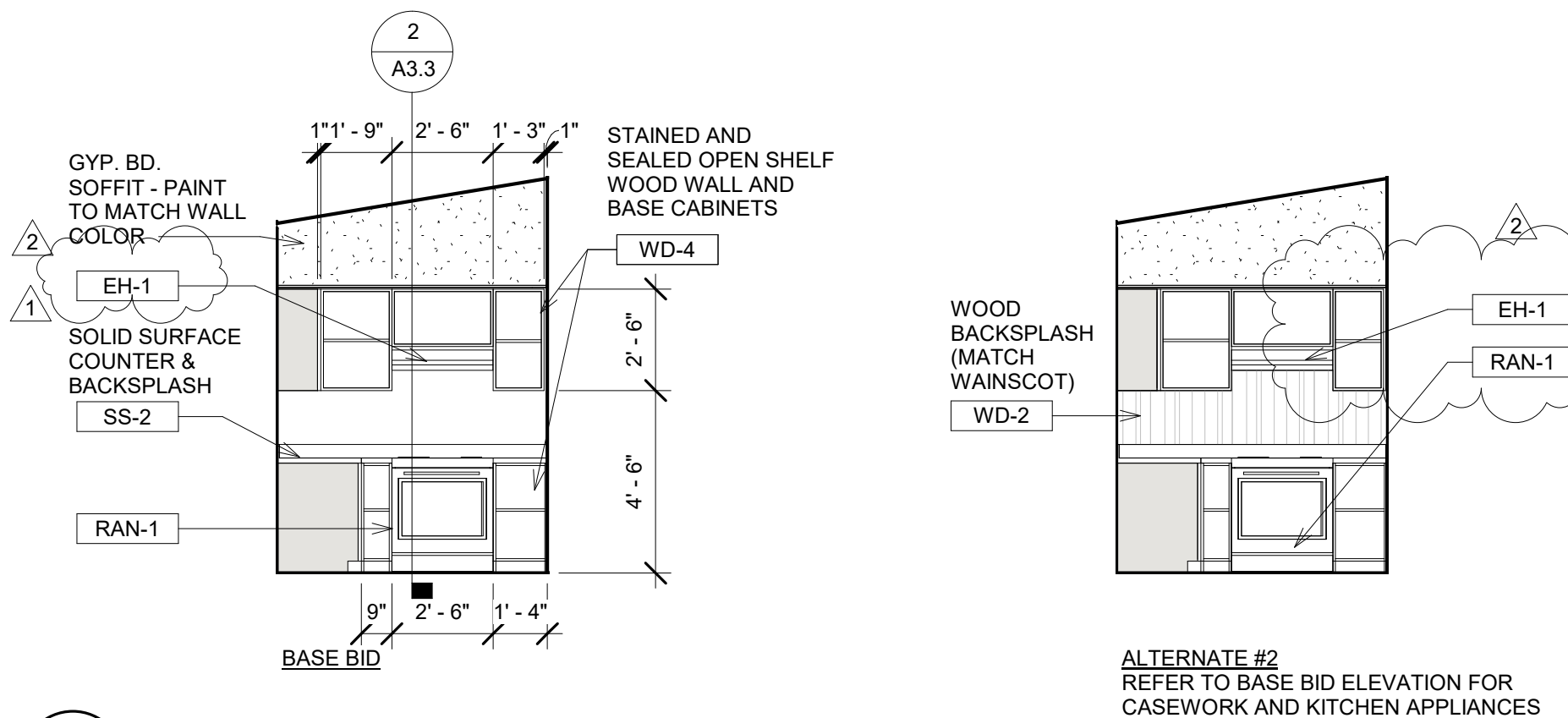


**1 LIVING ROOM ELEVATION**  
A1.3 SCALE: 1/4" = 1'-0"

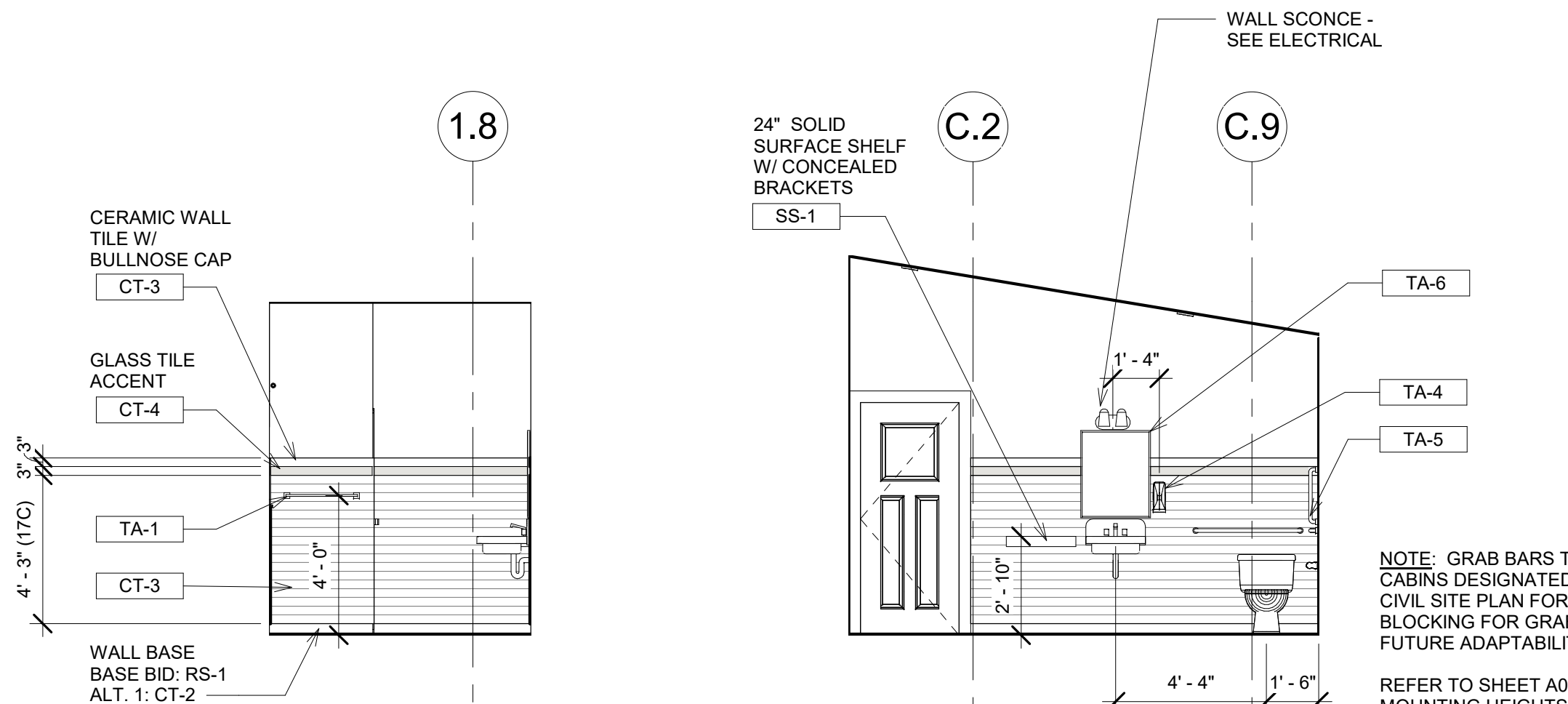
KEYED NOTES	
COF-1	COFFEE MAKER (OFOI)
CT-2	CERAMIC TILE BASE (ALT. #1) - SEE INTERIOR FINISH LEGEND
CT-3	CERAMIC WALL TILE - SEE INTERIOR FINISH LEGEND
CT-4	GLASS WALL TILE ACCENT - SEE INTERIOR FINISH LEGEND
DW-Y	ADA DISHWASHER (OFOI)
EH-1	EXHAUST HOOD (OFCI)
MIC-1	MICROWAVE (OFOI)
RAN-1	ADA RANGE WITH EXHAUST HOOD (OFOI)
REF-1	FULL-SIZE REFRIGERATOR / FREEZER (OFOI)
RS-1	RESILIENT SHEET FLOOR / BASE (BASE BID) - SEE INTERIOR FINISH LEGEND
SS-1	SOLID SURFACE - SEE INTERIOR FINISH LEGEND
SS-2	SOLID SURFACE - SEE INTERIOR FINISH LEGEND
TA-1	24-INCH TOWEL BAR
TA-2	TOILET TISSUE DISPENSER
TA-4	SOAP DISPENSER
TA-5	GRAB BAR
TA-6	24x36 MIRROR
TA-7	SHOWER ROD & HOOKS
TA-8	SHOWER CURTAIN
TA-9	ROBE HOOK
TA-10	FOLDING SHOWER SEAT (ALT. #1)
TA-11	TWO-ARM SHOWER GRAB BAR (ALT. #1)
TA-12	SHOWER SHELF (ALT. #1)
WD-2	WOOD WAINSCOT (ALT. #2) - SEE INTERIOR FINISH LEGEND
WD-3	WOOD CEILING - SEE INTERIOR FINISH LEGEND
WD-4	WOOD CABINETS - SEE INTERIOR FINISH LEGEND



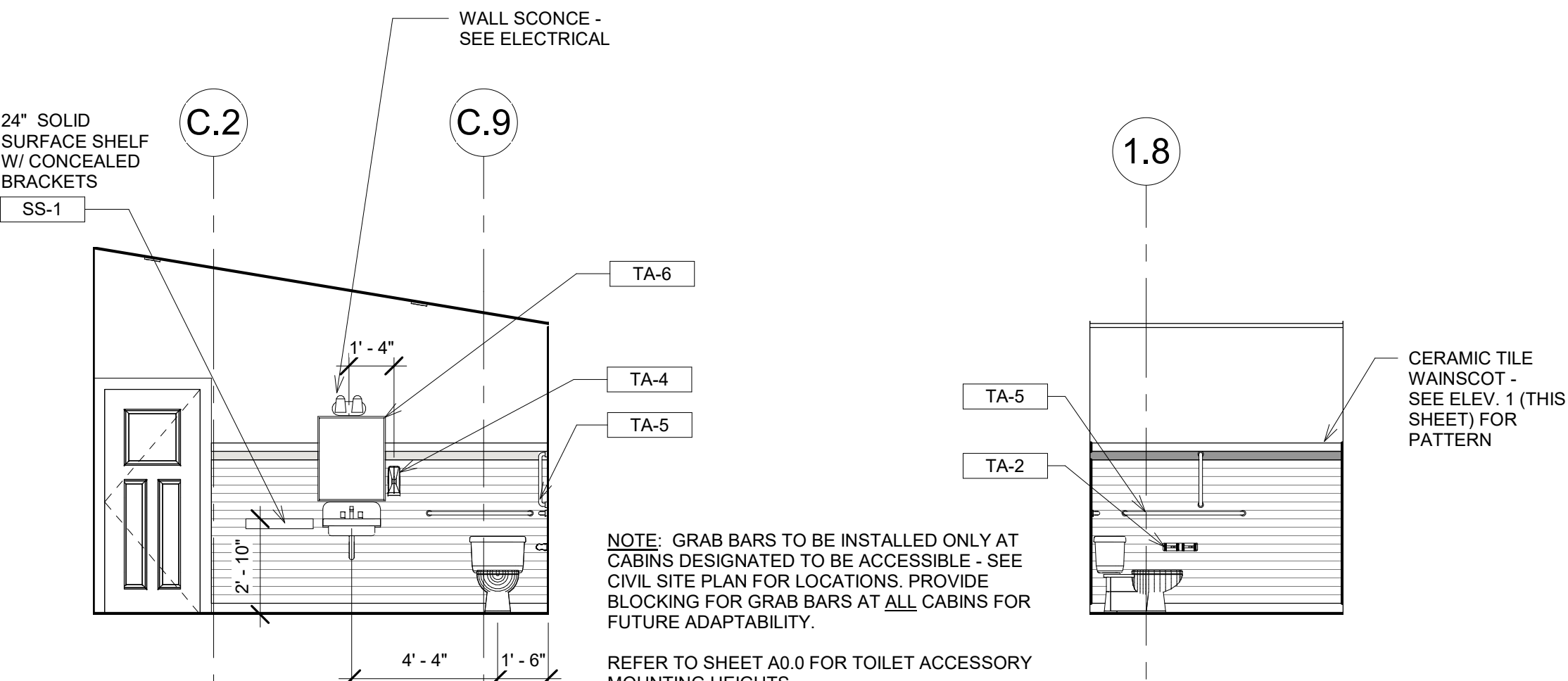
**2 KITCHEN ELEVATION 1**  
A1.3 SCALE: 1/4" = 1'-0"



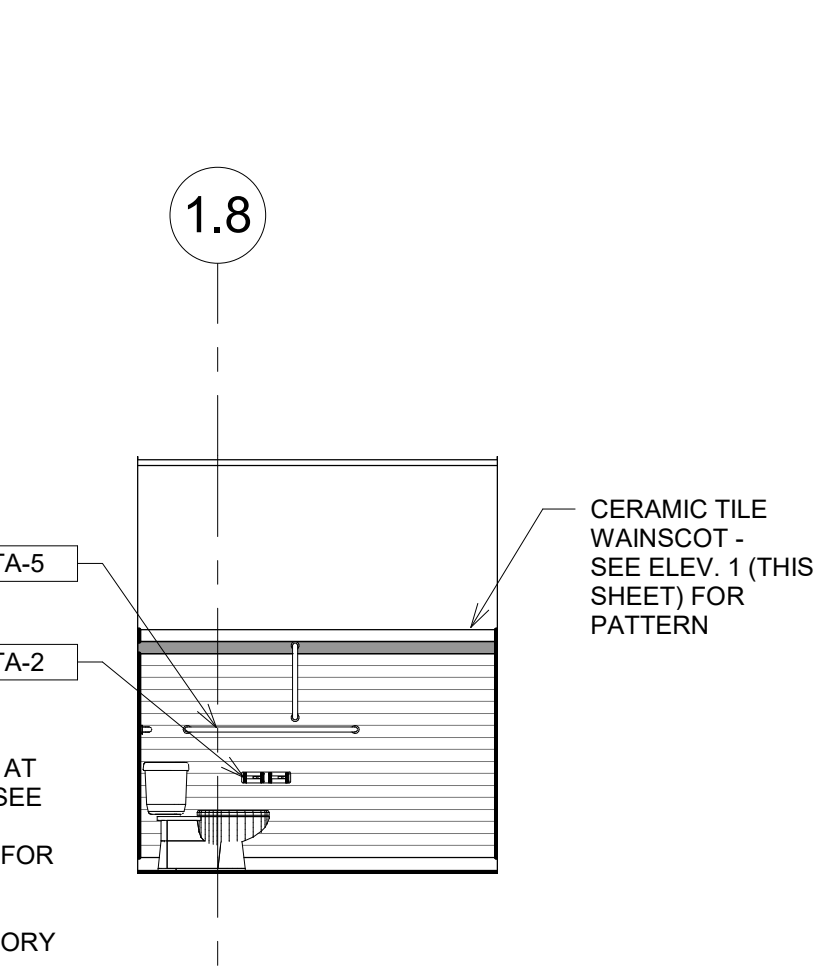
**3 KITCHEN ELEVATION 2**  
A1.3 SCALE: 1/4" = 1'-0"



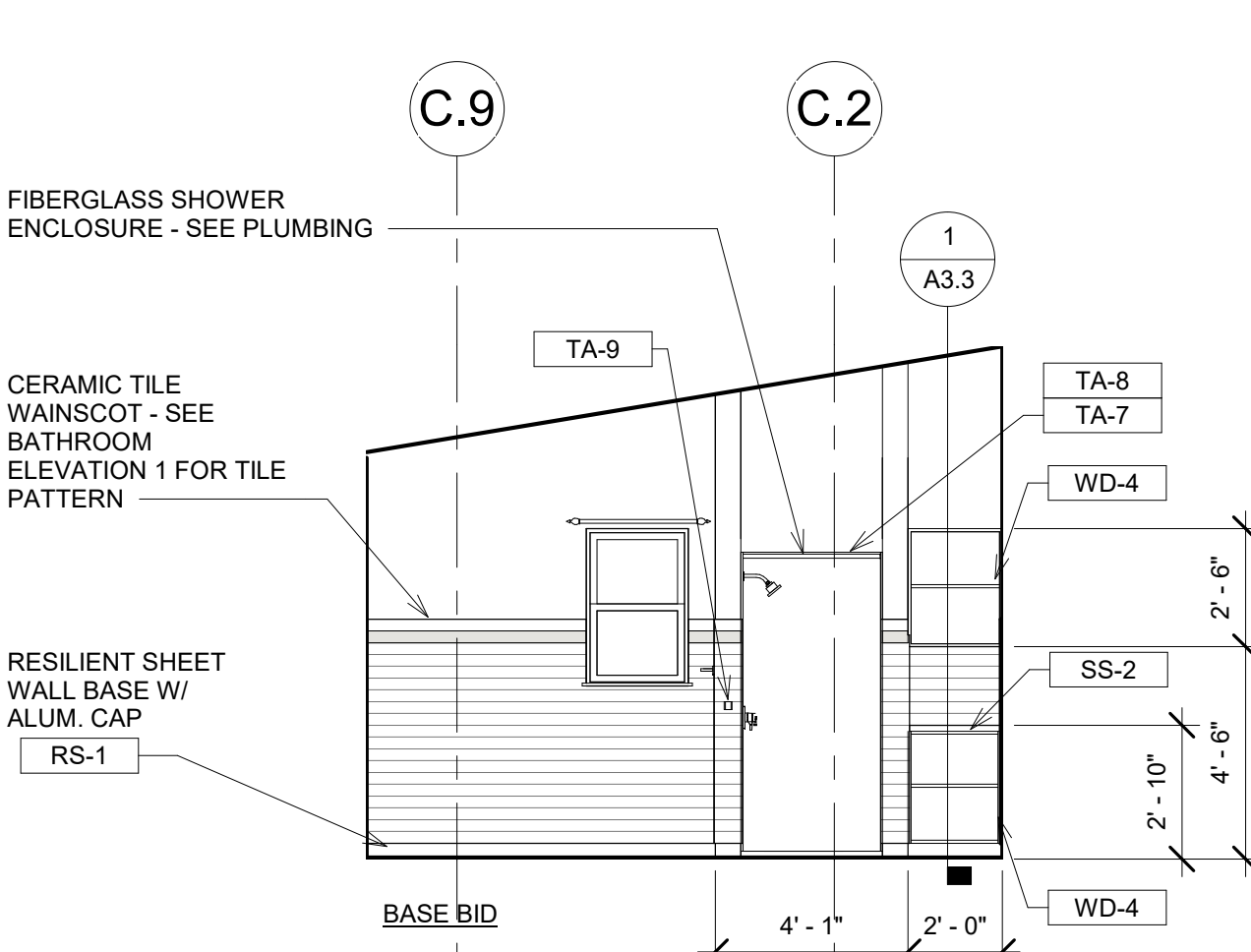
**4 BATHROOM ELEV. 1**  
A1.3 SCALE: 1/4" = 1'-0"



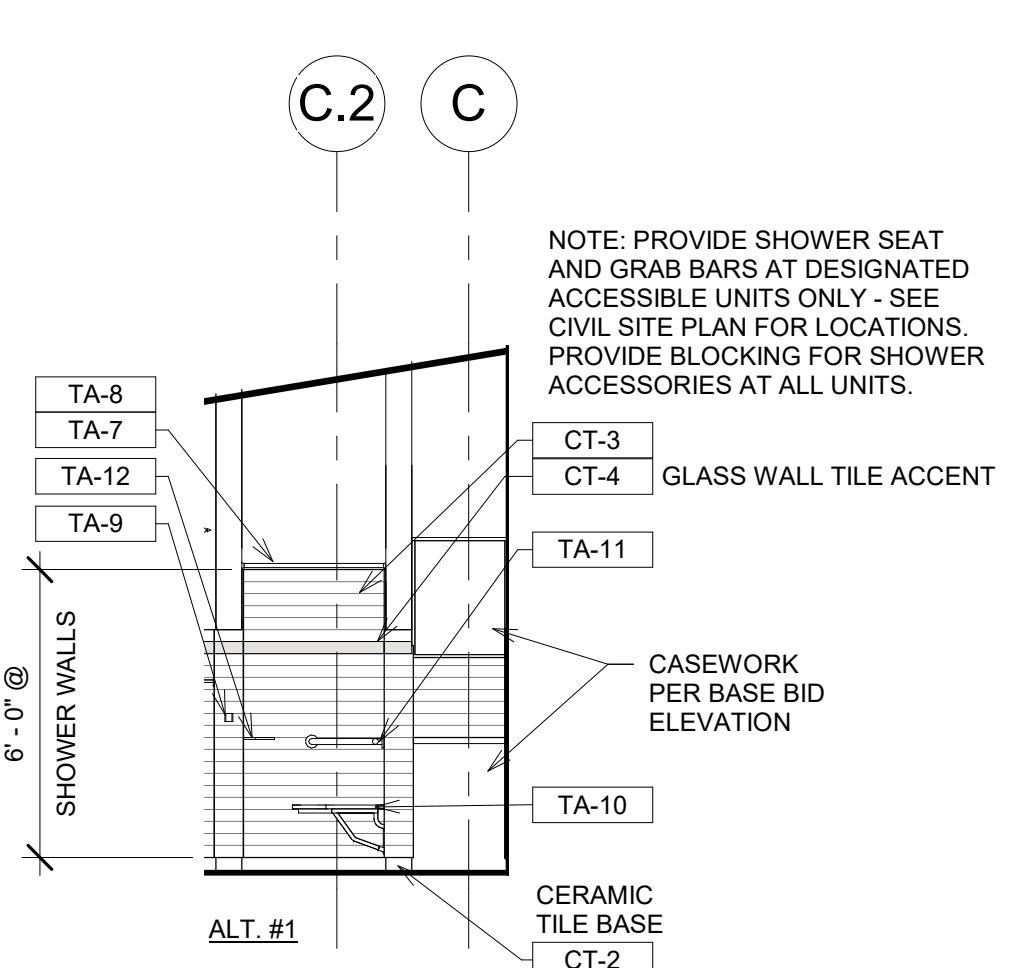
**5 BATHROOM ELEV. 2**  
A1.3 SCALE: 1/4" = 1'-0"



**6 BATHROOM ELEV. 3**  
A1.3 SCALE: 1/4" = 1'-0"



**7 BATHROOM ELEV. 4**  
A1.3 SCALE: 1/4" = 1'-0"



STATE OF MISSOURI  
MICHAEL L. PARSON,  
GOVERNOR

**CONSTRUCTION DOCUMENTS**

This drawing and the details on it are the sole property of the architect and may be used for this specific project only. It shall not be loaned, copied or reproduced, in whole or in part, or for any other purpose or project without the written consent of the Architect.

The Professional Architect's seal affixed to this sheet applies only to the material and items shown on this sheet. All drawings, instruments or other documents not exhibiting this seal shall not be considered prepared by this architect, and this architect expressly disclaims any and all responsibility for such plans, drawings or documents not exhibiting this seal.

2725 Sutton Blvd.  
St. Louis, Missouri 63143  
p. 314.644.2200  
www.fe-stl.com

MO CERTIFICATE OF AUTHORITY:  
CIVIL/STRUCTURAL ENGINEERING: 001225  
LAND SURVEYING: 000282

**KWK ARCHITECTS**

103 West Lockwood Ave Ste 218  
St. Louis, Missouri 63119  
p. 314.942.8810  
info@kwkarchitects.com

KWK Architects, L.L.C.  
MO Certificate of Authority  
#2013009784

303rd Engineering Group, LLC

MO Certificate of Authority  
ELECTRICAL MECHANICAL PLUMBING  
ENGINEERING: 2007023895

**CODE Engineering Services, LLC**  
12015 Manchester Road  
Suite 141  
St. Louis, MO 63131

MO Certificate of Authority  
FIRE PROTECTION ENGINEERING:  
0007080508

OFFICE OF ADMINISTRATION  
DIVISION OF FACILITIES  
MANAGEMENT,  
DESIGN AND CONSTRUCTION

**MISSOURI DEPARTMENT OF NATURAL RESOURCES**

**JOHNSON'S SHUT-INS STATE PARK**  
148 TAUM SAUK TRAIL, MIDDLE BROOK, MO 63656

PROJECT # X2206-01  
SITE # 5213  
FACILITY # 7815213017, 7815213018, 7815213019, 7815213021

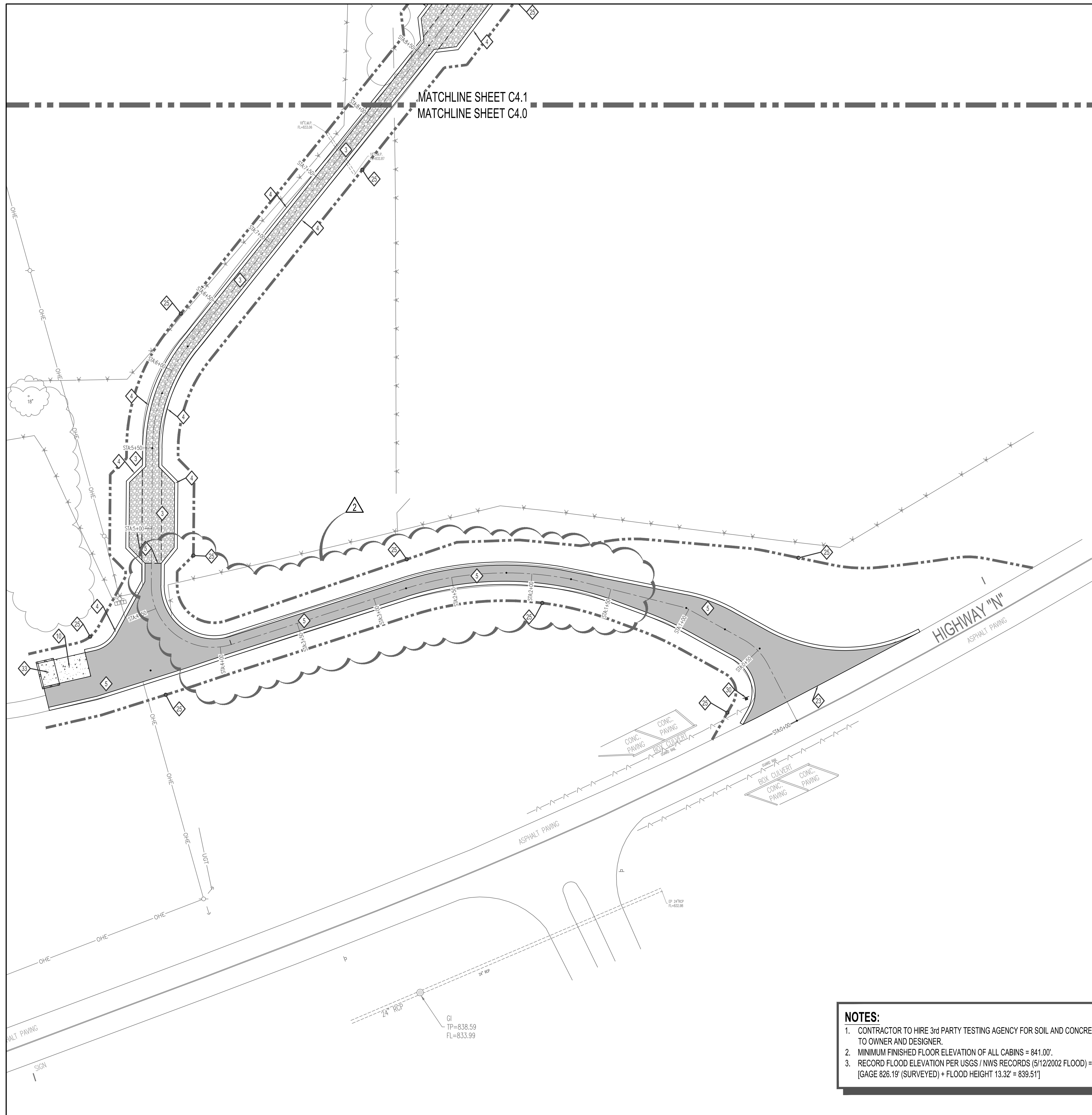
REVISIONS		
NO.	DATE	DESCRIPTION
1	06.14.23	ADD #1
2	06.23.23	ADD#2

DATE: 04.11.2023  
KWK PROJECT #: 22030  
CHECK: RMB

SHEET TITLE:  
**2-BR INTERIOR ELEVATIONS**

48 OF 75 SHEETS

SHEET NUMBER  
**A1.3**



**KEYED IMPROVEMENT NOTES:**

- 1 MATCH EXISTING PAVEMENT ELEVATIONS.
- 2 CONSTRUCT 4 INCH THICK P.C. SIDEWALK ON 6 INCH THICK GRANULAR BASE. REFER TO DETAIL ON SHEET C14.0 SERIES.
- 3 CONSTRUCT 4 INCH THICK CRUSHED IRON MOUNTAIN TRAP ROCK PAVEMENT OVER 8 INCHES OF COMPACTED CRUSHED LIMESTONE BASE OVER COMPACTED SUBGRADE. PLACE TRAP ROCK IN 2 SEPARATE LIFTS. REFER TO TYPICAL SECTION ON SHEET C14.0 SERIES.
- 4 CONSTRUCT 24"x8" HORIZONTAL CONCRETE CURB. REFER TO SECTION ON SHEET C14.0 SERIES TOOL CONTROL JOINTS @ 10' O.C. INSTALL EXPANSION JOINTS @ 20' O.C.
- 5 CONSTRUCT 2 INCH THICK TYPE "C" ASPHALTIC CONCRETE PAVEMENT OVER 4 INCH THICK TYPE "X" ASPHALTIC CONCRETE PAVEMENT OVER 6 INCHES OF COMPACTED CRUSHED LIMESTONE BASE OVER COMPACTED SUBGRADE. PLACE ASPHALT IN 2 SEPARATE LIFTS. REFER TO TYPICAL SECTION ON SHEET C14.0 SERIES.
- 6 CONSTRUCT 6 INCH THICK REINFORCED CONCRETE PAVEMENT. REFER TO SECTION ON SHEET C14.0 SERIES.
- 7 FURNISH AND INSTALL NEW C.M.P. STORM WATER CULVERT WITH FLARED END SECTIONS. REFER TO PROFILES ON SHEET C12.0
- 8 FURNISH AND INSTALL NEW PRECAST SANITARY SEWER MANHOLE. REFER TO SEWER PROFILES ON SHEETS C8.5.
- 9 FURNISH AND INSTALL 8 INCH SDR 26 P.V.C. SANITARY SEWER AT MINIMUM 1% SLOPE WITH RELATED CLEANOUTS.
- 10 CONSTRUCT 8-INCH THICK REINFORCED CONCRETE PAVEMENT. REFER TO SECTION AND ON SHEET C14.0 SERIES.
- 11 FURNISH AND INSTALL 2 INCH PE 3608 / 3408 IPS, DR9 (200 PS) HDPE FORCE SEWER MAIN WITH COPPER COATED STEEL TRACER WIRE COATED WITH 45 MIL HDPE COATING. INSTALL BY DIRECTIONAL BORING.
- 12 CONSTRUCT 2 INCH CLEAN TRAP ROCK SURFACE BENEATH EACH CABIN. REFER TO SECTION AND DETAILS ON SHEET C14.2.
- 13 INSTALL NEW 4" SDR 35 P.V.C. SLEEVE AND RISER. REFER TO DETAIL ON SHEET C14.0 SERIES.
- 14 CONSTRUCT NEW UNDERGROUND ELECTRICAL SERVICE. COORDINATE WITH AMEREN UE. REFER TO ELECTRICAL DRAWINGS FOR CONDUIT SIZE. INSTALL PRIMARY SERVICE CONDUIT FROM UTILITY POLE TO TRANSFORMER BY DIRECTIONAL BORING.
- 15 FURNISH AND INSTALL 3 INCH FREEZE PROOF FLUSHING HYDRANT. REFER TO DETAIL ON SHEET C11.0.
- 16 FURNISH AND INSTALL 3/4 INCH FREEZE PROOF YARD HYDRANT WITH SHUTOFF VALVE. REFER TO DETAIL ON SHEET C11.0.
- 17 OWNER TO FURNISH AND INSTALL BICYCLE TRAIL SAFETY GATES.
- 18 TAP EXISTING 4 INCH P.V.C. WATER SUPPLY LINE. FURNISH AND INSTALL 4" MUELLER RESILIENT WEDGE GATE VALVE IN PYRAMID VALVE BOX.
- 19 FURNISH AND INSTALL 4 INCH DR7.3 (254 PS) HDPE WATER SERVICE LINE WITH SHUT OFF VALVES IN CAST IRON VALVE BOX AS INDICATED. INSTALL COPPER COATED STEEL TRACER WIRE COATED WITH 45 MIL HDPE COATING. INSTALL BY DIRECTIONAL BORING.
- 20 FURNISH AND INSTALL 1 INCH DR11 HDPE WATER SERVICE LINE WITH FORGED BRASS BALL VALVE SHUT OFF VALVE IN PRE-FABRICATED VALVE BOX WITH CAST IRON LID.
- 21 REMOVE EXISTING FENCE AS REQUIRED FOR CONSTRUCTION.
- 22 FURNISH AND INSTALL NEW ADA PARKING SIGN. REFER TO DETAILS ON SHEET ON C14.0 SERIES.
- 23 CONSTRUCT 14:00 STANDARD ASPHALT COMMERCIAL DRIVEWAY APRON. MINIMUM PAVEMENT THICKNESS TO BE PER KEYED IMPROVEMENT NOTE 5.
- 24 FURNISH AND INSTALL EIGHT (8) 3'x3'x3" RHYOLITE BOULDERS WITH MAXIMUM GAP OF 6- FEET BETWEEN BOULDERS TO PREVENT VEHICLES FROM DRIVING ON TO BIKE TRAIL.
- 25 PROJECT LIMITS. FURNISH, INSTALL, AND MAINTAIN SILTATION CONTROL FILTER ROLL BMP AT PROJECT LIMIT LINE UNTIL COMPLETION OF CONSTRUCTION. CONTRACTOR SHALL ALSO PROVIDE BMP SILTATION PROTECTION AT CULVERTS IF NECESSARY. FINISH GRADE AND SEED ALL DISTURBED YARD AREAS WITHIN PROJECT LIMITS. REFER TO SHEET C6.0 SERIES DRAWINGS.
- 26 CONSTRUCT 24'x24'x6 INCH THICK REINFORCED CONCRETE SLAB FOR PICNIC AREA. REFER TO DETAILS ON C14.0 SERIES.
- 27 FURNISH AND APPLY WHITE PAVEMENT MARKING PAINT TO DELINEATE EACH NON-ADA PARKING STALL.
- 28 FURNISH AND APPLY BLUE PAVEMENT MARKING PAINT TO DELINEATE ADA PARKING STALL, SYMBOL, AND UNLOADING AREA.
- 29 CONSTRUCT BURIED ELECTRICAL SERVICE IN P.V.C. CONDUIT TO EACH CABIN. REFER TO ELECTRICAL DRAWINGS.
- 30 FURNISH AND INSTALL STOP SIGN. REFER TO DETAIL ON C14.0 SERIES.
- 31 FURNISH AND INSTALL CONCRETE WHEEL STOPS. REFER TO DETAIL ON SHEET C14.0 SERIES. TYPICAL 20 PLACES).
- 32 FURNISH AND INSTALL 8"W x 12'L x 8" THICK ROCK BLANKET OVER GEOTEXTILE FILTER FABRIC.
- 33 CONSTRUCT TRASH DUMPSTER ENCLOSURE. REFER TO DETAILS AND SECTIONS ON SHEET C14.0 SERIES.
- 34 FURNISH AND INSTALL PACKAGE SEWERAGE DUPLEX GRINDER PUMP STATION CONTROLS WITH STROBE ALARM. REFER TO DETAILS AND SECTIONS ON SHEET C10.0 SERIES.
- 35 PROTECT EXISTING CONCRETE PAVED TRAIL DURING CONSTRUCTION. REPLACE ANY DAMAGED PAVEMENT PRIOR TO SUBSTANTIAL COMPLETION OF CONSTRUCTION.

**NOTES:**

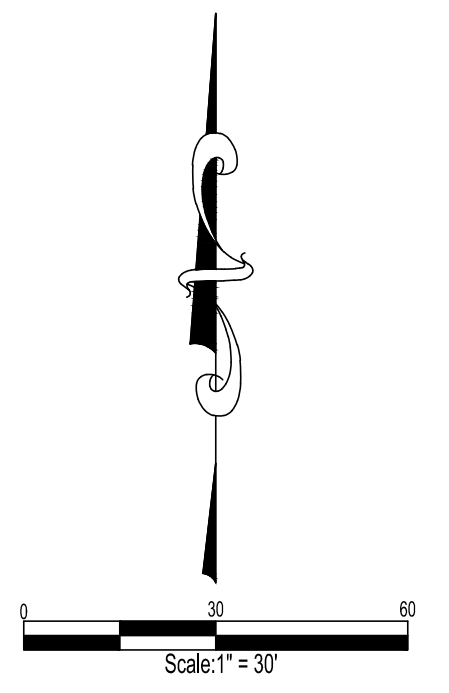
1. CONTRACTOR TO HIRE 3rd PARTY TESTING AGENCY FOR SOIL AND CONCRETE TESTING AND PROVIDE REPORTS TO OWNER AND DESIGNER.
2. MINIMUM FINISHED FLOOR ELEVATION OF ALL CABINS = 841.00'.
3. RECORD FLOOD ELEVATION PER USGS / NWS RECORDS (5/12/2002 FLOOD) = 839.51' [GAGE 826.19' (SURVEYED) + FLOOD HEIGHT 13.32' = 839.51']

**BENCHMARK:**

US DEPARTMENT OF INTERIOR BM J-JDS-1967 ELEVATION = 852.00' BRASS DISK ON CENTER HEADWALL NORTH EAST CORNER OF INTERSECTIONS HWY N & HWY MM. SURVEYOR TO CALIBRATE ELEVATION TO 852.00' AT BENCHMARK PRIOR TO CONSTRUCTION LAYOUT. BEARING BASIS: MISSOURI GEOGRAPHIC REFERENCE SYSTEM STATION RE-061.

**CONTROL POINT BENCHMARK:**

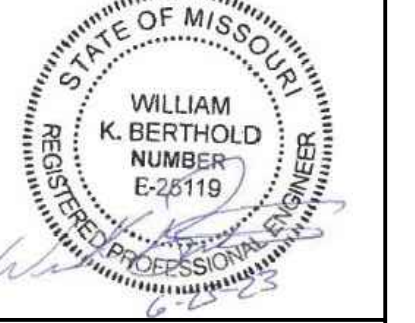
NORTHING = 624729.2990  
EASTING = 718315.9090  
ELEVATION = 852.00 BRASS DISK



STATE OF MISSOURI  
MICHAEL L. PARSON,  
GOVERNOR

**CONSTRUCTION DOCUMENTS**

This drawing and the details on it are the sole property of the design professional and may be used for this specific project only. It shall not be loaned, copied or reproduced, in whole or in part, for any other purpose or project without the written consent of the design professional.



WILLIAM K. BERTHOLD,  
PROFESSIONAL ENGINEER  
LICENSE # E-28119

The design professional seal affixed to this sheet applies only to the material and items shown on this sheet. All drawings, instruments or other documents not exhibiting this seal shall not be considered prepared by this design professional, and this design professional expressly disclaims any and all responsibility for such plan, drawings or documents not exhibiting this seal.



2725 Sutton Blvd.  
St. Louis, Missouri 63119  
p. 314.644.2200  
www.fe-stl.com

MO CERTIFICATE OF AUTHORITY:  
CIVIL/STRUCTURAL ENGINEERING: 001225  
LAND SURVEYING: 000282

**KWK ARCHITECTS**

103 West Lockwood Ave Ste 218  
St. Louis, Missouri 63119  
p. 314.942.8810  
info@kwkarchitects.com

KWK Architects, L.L.C. MO  
Certificate of Authority  
#2013009784

303rd Engineering Group, LLC  
10000 BAKER BLVD.  
ST. LOUIS, MISSOURI 63122  
314.942.8810

MO Certificate of Authority

ELECTRICAL, MECHANICAL/PLUMBING  
ENGINEERING: 2007023885

**CODE ENGINEERING SERVICES**

12015 MANCHESTER RD.  
SUITE 141  
ST. LOUIS, MO 63131  
(314) 965-8052

MO Certificate of Authority  
#2007006508

OFFICE OF ADMINISTRATION  
DIVISION OF FACILITIES  
MANAGEMENT,  
DESIGN AND CONSTRUCTION



**SIX NEW FULL SERVICE CABINS - JOHNSON'S SHUT-INS STATE PARK**

PROJECT # X2206-01  
SITE # 5213  
FACILITY # 7815213016, 7815213017, 7815213018, 7815213019, 7815213020, 7815213021

**REVISIONS**

NO.	DATE	DESCRIPTION
1	6/23/23	ADDENDUM 2

DATE: **04.11.2023**

FE PROJECT #: **220058**

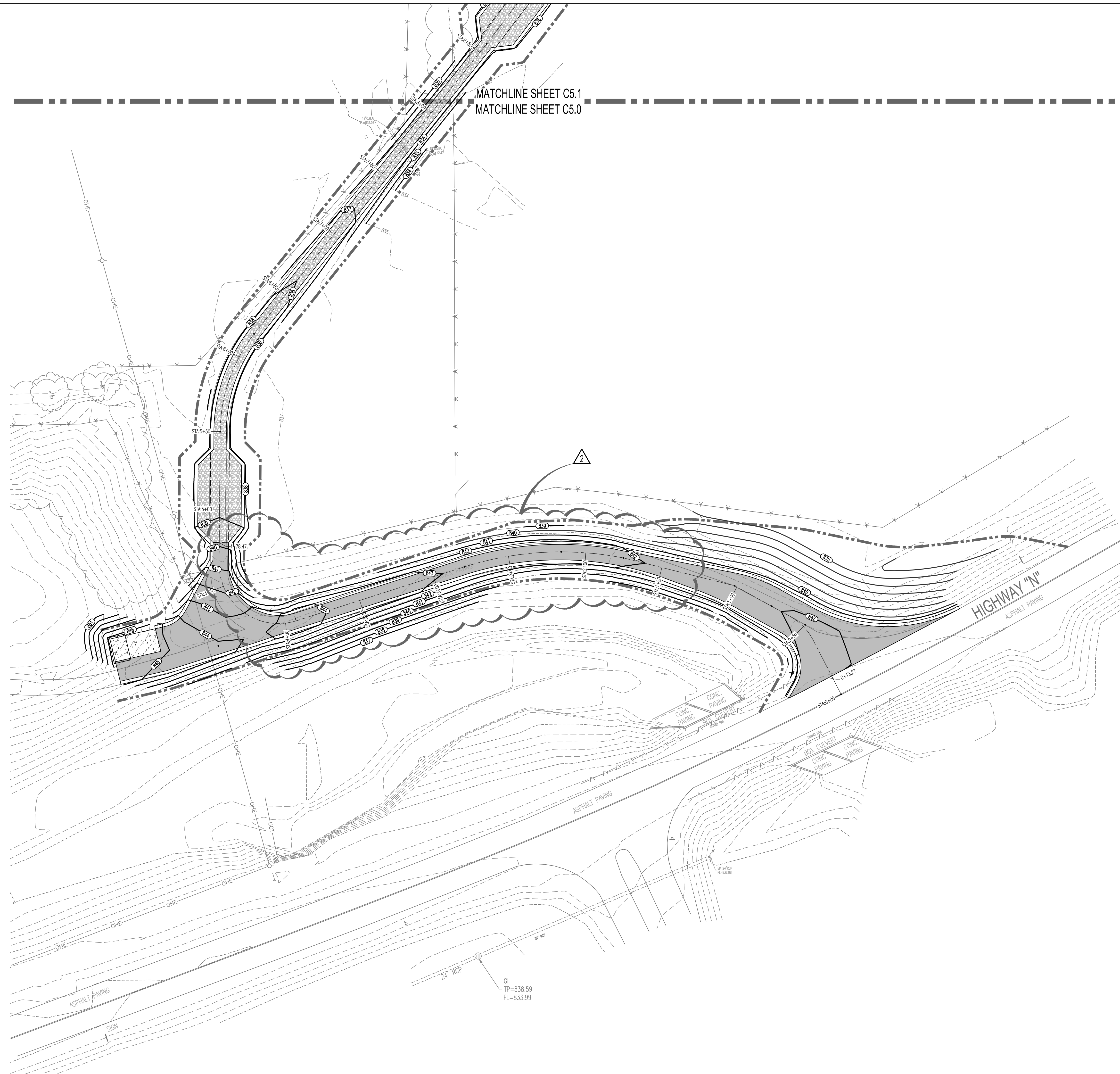
CHECK: **WKB**

SHEET TITLE:

**SITE IMPROVEMENT PLAN 1**

6 OF 75 SHEETS

SHEET NUMBER  
**C4.0**



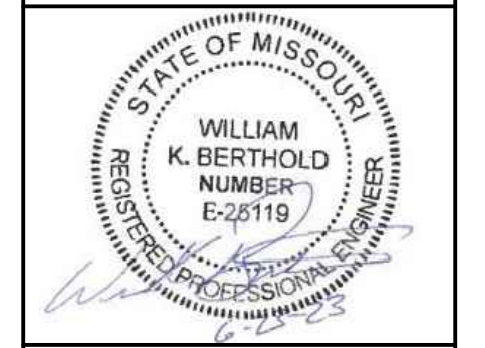
**BENCHMARK:**  
 US DEPARTMENT OF INTERIOR BM J-JDS-1967 ELEVATION = 852.00 BRASS DISK ON CENTER HEADWALL NORTH EAST CORNER OF INTERSECTIONS HWY N & HWY MM.  
 SURVEYOR TO CALIBRATE ELEVATION TO 852.00' AT BENCHMARK PRIOR TO CONSTRUCTION LAYOUT.  
 BEARING BASIS: MISSOURI GEOGRAPHIC REFERENCE SYSTEM STATION RE-061.

**CONTROL POINT BENCHMARK:**  
 NORTHING = 624729.2990  
 EASTING = 718315.9090  
 ELEVATION = 852.00 BRASS DISK

STATE OF MISSOURI  
 MICHAEL L. PARSON,  
 GOVERNOR

**CONSTRUCTION DOCUMENTS**

This drawing and the details on it are the sole property of the design professional and may be used for this specific project only. It shall not be loaned, copied or reproduced, in whole or in part, or for any other purpose or project without the written consent of the design professional.



WILLIAM K. BERTHOLD,  
 PROFESSIONAL ENGINEER  
 LICENSE # E-25119

The design professional seal affixed to this sheet applies only to the material and items shown on this sheet. All drawings, instruments or other documents not exhibiting this seal shall not be considered prepared by this design professional, and this design professional expressly disclaims any and all responsibility for such plan, drawings or documents not exhibiting this seal.

2725 Sutton Blvd.  
 St. Louis, Missouri 63143  
 p. 314.644.2200  
 www.fe-stl.com

MO CERTIFICATE OF AUTHORITY:  
 CIVIL/STRUCTURAL ENGINEERING: 001225  
 LAND SURVEYING: 000282

**KWK ARCHITECTS**

103 West Lockwood Ave Ste 218  
 St. Louis, Missouri 63119  
 p. 314.942.8810  
 info@kwkarchitects.com

KWK Architects, L.L.C. MO  
 Certificate of Authority  
 #2013009784

303rd Engineering Group, LLC  
 13489 MAJOR BLVD.  
 ST. LOUIS, MISSOURI 63132  
 314.444.3388

MO Certificate of Authority

ELECTRICAL, MECHANICAL/PLUMBING  
 ENGINEERING: 2007023885

**CODE ENGINEERING SERVICES**

12015 MANCHESTER RD.  
 SUITE 141  
 ST. LOUIS, MO 63131  
 (314) 965-8052

MO Certificate of Authority  
 #2007006508

OFFICE OF ADMINISTRATION  
 DIVISION OF FACILITIES  
 MANAGEMENT,  
 DESIGN AND CONSTRUCTION



**SIX NEW FULL SERVICE CABINS - JOHNSON'S SHUT-INS STATE PARK**

PROJECT # X2206-01  
 SITE # 5213  
 FACILITY # 7815213016, 7815213017,  
 7815213018, 7815213019,  
 7815213020, 7815213021

**REVISIONS**

NO.	DATE	DESCRIPTION
1	6/23/23	ADDENDUM 2

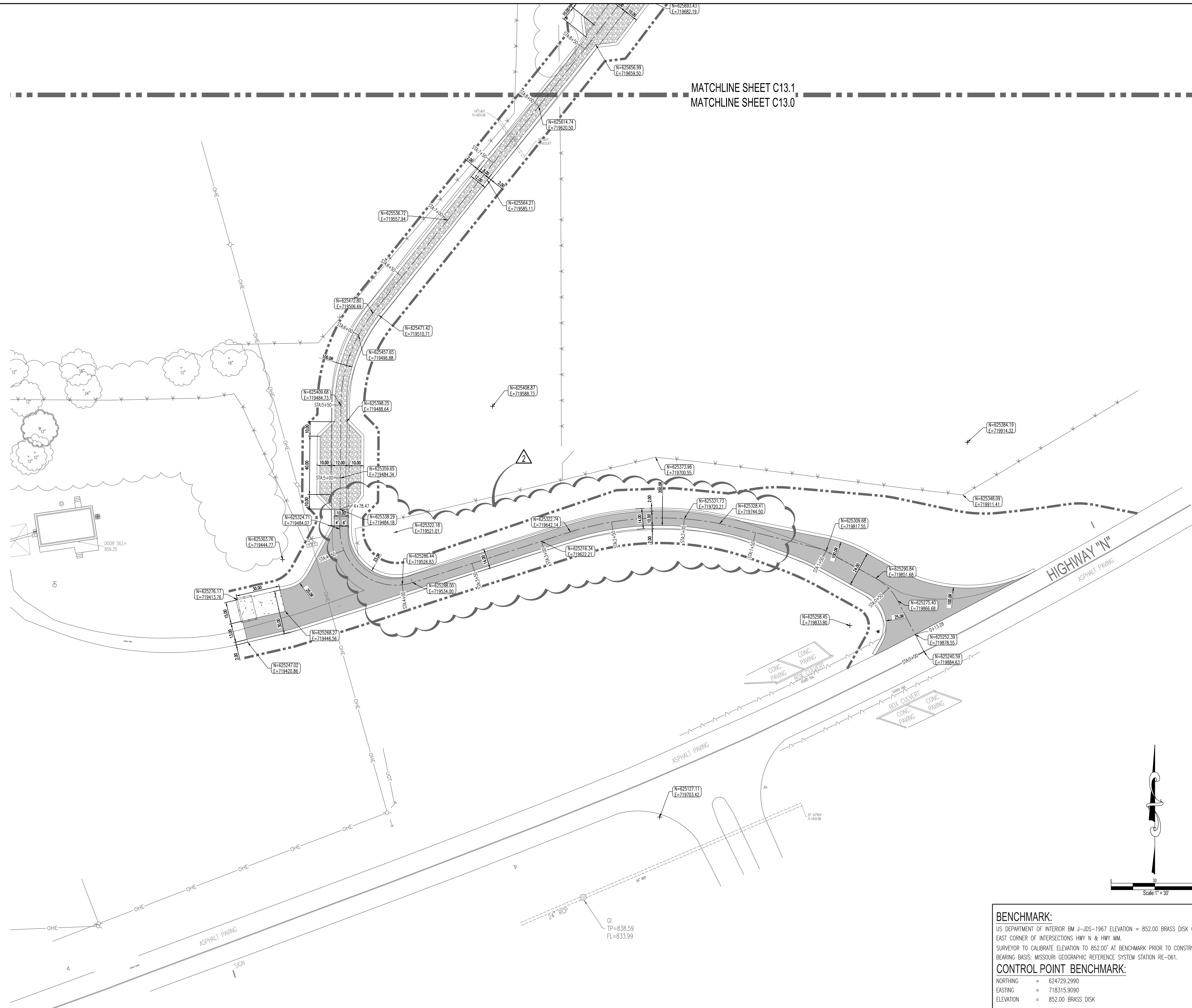
DATE: **04.11.2023**  
 FE PROJECT #: **220058**  
 CHECK: **WKB**

SHEET TITLE:

**SITE GRADING PLAN 1**

9 OF 75 SHEETS

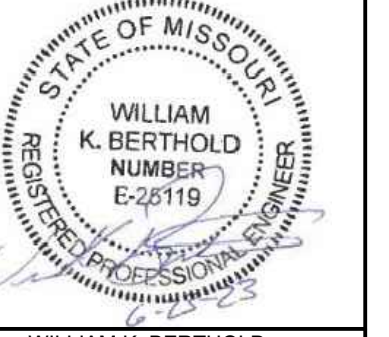
**SHEET NUMBER**  
**C5.0**



STATE OF MISSOURI  
MICHAEL L. PARSON,  
GOVERNOR

CONSTRUCTION DOCUMENTS

This drawing and the details on it are the sole property of the design professional and may be used for this specific project only. It shall not be loaned, copied or reproduced, in whole or in part, for any other purpose or project without the written consent of the design professional.



WILLIAM K. BERTHOLD,  
PROFESSIONAL ENGINEER  
LICENSE # E-25119

The design professional seal affixed to this sheet applies only to the material and items shown on this sheet. All drawings, instruments or other documents not exhibiting this seal shall not be considered prepared by this design professional, and this design professional expressly disclaims any and all responsibility for such plan, drawings or documents not exhibiting this seal.

2725 Sutton Blvd.  
St. Louis, Missouri 63143  
p. 314.644.2200  
www.fe-stl.com

MO CERTIFICATE OF AUTHORITY:  
CIVIL/STRUCTURAL ENGINEERING: 001225  
LAND SURVEYING: 000282

**KWK**  
ARCHITECTS

103 West Lockwood Ave Ste 218  
St. Louis, Missouri 63119  
p. 314.942.8810  
info@kwkarchitects.com

KWK Architects, L.L.C. MO  
Certificate of Authority  
#2013009784

303rd Engineering Group, LLC  
1808 BAKER BLVD.  
ST. LOUIS, MISSOURI 63102  
(314) 444-8388

MO Certificate of Authority

ELECTRICAL, MECHANICAL/PLUMBING  
ENGINEERING: 2007023885

**CODE**  
ENGINEERING SERVICES

12015 MANCHESTER RD.  
SUITE 141  
ST. LOUIS, MO 63131  
(314) 965-8052

MO Certificate of Authority  
#2007006508

OFFICE OF ADMINISTRATION  
DIVISION OF FACILITIES  
MANAGEMENT,  
DESIGN AND CONSTRUCTION

MISSOURI  
DEPARTMENT OF  
NATURAL RESOURCES

SIX NEW  
FULL SERVICE  
CABINS -  
JOHNSON'S  
SHUT-INS  
STATE PARK

PROJECT # X2206-01  
SITE # 5213  
FACILITY # 7815213016, 7815213017,  
7815213018, 7815213019,  
7815213020, 7815213021

REVISIONS

NO.	DATE	DESCRIPTION
1	6/23/23	ADDENDUM 2

DATE: 04.11.2023

FE PROJECT #:  
220058

CHECK: WKB

SHEET TITLE:

LAYOUT PLAN 1

37 OF 75 SHEETS

SHEET NUMBER  
**C13.0**

**BENCHMARK:**  
US DEPARTMENT OF INTERIOR BM J-JDS-1967 ELEVATION = 852.00' BRASS DISK ON CENTER HEADWALL NORTH EAST CORNER OF INTERSECTIONS HWY N & HWY MM.  
SURVEYOR TO CALIBRATE ELEVATION TO 852.00' AT BENCHMARK PRIOR TO CONSTRUCTION LAYOUT.  
BEARING BASIS: MISSOURI GEOGRAPHIC REFERENCE SYSTEM STATION RE-061.

**CONTROL POINT BENCHMARK:**  
NORTHING = 624729.2990  
EASTING = 718315.9090  
ELEVATION = 852.00 BRASS DISK