

ADDENDUM NO. 2

TO: PLANS AND SPECIFICATIONS FOR STATE OF MISSOURI

**Design & Construct New Premium Sites, Campground Network
Weston Bend State Park
Weston, Missouri
PROJECT NO.: X2221-01**

Bid Opening Date: 1:30 PM, Thursday, July 18, 2024 (Extended)

Bidders are hereby informed of the following:

SPECIFICATION CHANGES/CLARIFICATIONS:

1. Add Section 012300 – Alternates
2. Section 012200 – Unit Prices
 - a. REVISE part 3.1 List of Unit Prices. See attached.
3. Section 31200 – Earth Moving
 - a. REMOVE part 3.15 Subsurface Drainage
 - i. There are no subsurface drains.
 - b. REVISE part 3.16 Subbase and Base Courses Under Pavements and Walks.
 - i. Remove B.1. Geogrid may be used if compaction is an issue. Refer to Geotech Report and Unit Prices specification.
 - c. REVISE part 3.17 Drainage Course Under Concrete Slabs-On-Grade.
 - i. Remove B.1 Geogrid may be used if compaction is an issue. Refer to Geotech Report and Unit Prices specification.

DRAWING CHANGES:

1. **Sheet E-801:** Updated 120/240 Typical Electrical Riser diagram.
 - a. Modified 120/240 FEEDER SCHEDULE: #1 for Evergy to supply transformer pad, contractor to install.
 - b. Modified 120/240 FEEDER SCHEDULE: #10 for Evergy to supply ground rods, contractor to install.
 - c. Added notes 11 and 12 to further clarify Evergy supplied and installed transformer and meter.
 - d. Added note 13 to note Evergy to supply ground rod, contractor to install.

The Contractor will perform trenching and provide and install 3" schedule 40 gray conduit

between transformers and from service location from existing transformer as identified by Everygy.

Everygy will provide the primary wiring.

The Contractor is responsible for the CT cabinets and the wire from the transformers to the CT cabinets.

2. **Sheet C-506:** Valve Box Detail, Refer to revised detail attached
3. **Sheet C-102:** septic tank has been removed from the project. A manhole replacement has been added.
4. **Sheet C-404 and C-405:** Pipe sizes added to plan and profile drawings
5. **Sheet C-501 to C-504:** Clean-out locations have been added and called out. Note has been added referencing Spec 333000 for Sanitary Sewer Construction. Septic tank has been removed from project. Sanitary Stub detail has been revised.
6. **Sheet L-500, Detail 3 and Sheet L-501, Detail 3 Utility Pads:** refer to revised details attached. Concrete for utility pads is to drain away from centerline of campsite.
7. **Sheet L-402:** Bottom of wall elevations have been added. See Attached.

GENERAL:

1. The Pre-Bid Meeting was held on July 1, 2024 at 10:30 PM.
2. Bid Date is being extended 2 day until July 18, 2024 at 1:30PM
3. Please contact Mandy Roberson, Contract Specialist, at (573) 522-0074 for questions regarding bidding procedures and MBE/WBE/SDVE goals and submittal requirements.
4. Changes to, or clarification of, the bid documents are only made as issued in the addenda.
5. Current Plan Holders list is available online at: [X2221-01 New Premium Campsites – Weston Bend State Park: Plan Holders: State of Missouri Office of Administration \(oafmdcplanroom.com\)](https://oafmdcplanroom.com)
6. Prospective Bidders contact American Document Solutions, 1400 Forum Blvd Suite 1C, Columbia MO 65201, 573-446-7768 to order official plans and specifications.
7. All bids shall be submitted on the bid form without additional terms and conditions, modifications, or stipulations. Each space on the bid form shall be properly filled. Failure to do so will result in rejections of the bid.
8. Approximate Notice-To-Proceed will be August

ATTACHMENTS:

1. Section 012300 Alternates and basis-of-design product
2. Section 012200 Unit Prices
3. Sheet L-402

4. Sheets L-500 and L-501
5. Sheets C-102 and 103
6. Sheets C-404 and 405
7. Sheets C-501 to 504
8. Sheet C-506
9. Sheet E-801
10. State Parks basis-of-design for Office Shed "Tuff Shed Plans"

July 12, 2024

END OF ADDENDUM NO. 2

SECTION 012200 – UNIT PRICES

PART 1 - GENERAL

1.1 RELATED DOCUMENTS

- A. Drawings and general provisions of the Contract including General and Supplementary Conditions and other Division 1 Specification Sections apply to this Section.
- B. Quantities of Units to be included in the Base Bid are indicated in Section 004322 – Unit Prices.

1.2 SUMMARY

- A. This Section includes administrative and procedural requirements for Unit Prices.
- B. Related Sections include the following:
 - 1. Division 1 Section "Allowances" for procedures for using Unit Prices to adjust quantity allowances.
 - 2. Division 1 Section "Contract Modification Procedures" for procedures for submitting and handling Change Orders.

1.3 DEFINITIONS

- A. Unit Price is, as stated on the Bid Form Attachment 004322, a price per unit of measurement for materials or services added to or deducted from the Contract Sum by appropriate modification, if estimated quantities of Work required by the Contract Documents are increased or decreased.

1.4 PROCEDURES

- A. Unit Prices include all necessary material plus cost for delivery, installation, insurance, applicable taxes, overhead, and profit.
- B. Measurement and Payment: Refer to individual Specification Sections for work that requires establishment of Unit Prices. Methods of measurement and payment for Unit Prices are specified in those Sections.
- C. Owner reserves the right to reject Contractor's measurement of Work in-place that involves use of established Unit Prices and to have this work measured, at Owner's expense, by an independent surveyor acceptable to Contractor.
- D. List of Unit Prices: A list of Unit Prices is included in Part 3. Specification Sections referenced in the schedule contain requirements for materials described under each Unit Price.

PART 2 - PRODUCTS (Not Used)

PART 3 - EXECUTION

3.1 LIST OF UNIT PRICES

- A. Unit Price No. 1 – 18” Diameter & Larger Tree Removal:
 - 1. Description: Remove existing tree according to Specification Section 311000 Site Clearing, Subsection 3.5 Clearing and Grubbing.
 - 2. Unit of Measurement: Each
 - 3. Base Bid Quantity: 28 EA

- B. Unit Price No. 2 – 3 to 5-inch Minus Well-graded Crushed Limestone
 - 1. Description: For stabilization of subgrade in soft zones. Refer to Geotechnical Engineering Services Report dated August 2, 2022.
 - 2. Unit of Measurement: Cubic Yard
 - 3. Base Bid Quantity: 1,270 CY

- C. Unit Price No. 3 - Geogrid (basis-of-design Tensar BX1100):
 - 1. Description: For stabilization of subgrade in soft zones, install per manufacturer’s recommendations. Refer to Geotechnical Engineering Services Report dated August 2, 2022.
 - 2. Unit of Measurement: Square Yard
 - 3. Base Bid Quantity: 3,670 SY

- D. Unit Price No. 4 – Low Plasticity Structural Fill and Compaction:
 - 1. Description: For stabilization of subgrade in soft zones, install per manufacturer’s recommendations. Refer to Geotechnical Engineering Services Report dated August 2, 2022.
 - 2. Unit of Measurement: Cubic Yard
 - 3. Base Bid Quantity: 1,270 CY

- E. Unit Price No. 5 – Asphalt Pavement:
 - 1. Description: For repair of damaged roadway. Install per specification section 321216.
 - 2. Unit of Measurement: Square Yard
 - 3. Base Bid Quantity: 914 SY

- F. Unit Price No. 6 – 6” Concrete Pavement:
 - 1. Description: Install per specification section 321313.
 - 2. Unit of Measurement: Square Yard
 - 3. Base Bid Quantity: 3,028 SY

- G. Unit Price No. 7 – 6” PVC SDR 26 – Gravity Main:
 - 1. Description: Install per specification section 333000.
 - 2. Unit of Measurement: Linear Feet
 - 3. Base Bid Quantity: 1,092 LF

- H. Unit Price No. 8 – 4” PVC SDR Service Stub Line:
 - 1. Description: Install per specification section 333000.
 - 2. Unit of Measurement: Linear Feet
 - 3. Base Bid Quantity: 1,113 LF

- I. Unit Price No. 9 – 2” C905 Service Line:
 - 1. Description: Install per specification section 331400.

2. Unit of Measurement: Linear Feet
 3. Base Bid Quantity: 1,747 LF
- J. Unit Price No. 10 – 3/4” PEX Stub Line:
1. Description: Install per specification section 331400.
 2. Unit of Measurement: Linear Feet
 3. Base Bid Quantity: 914 LF
- K. Unit Price No. 11 – 250A 120/240V Underground Feeder:
1. Description: Install per E series drawings and Division 26 specifications.
 2. Unit of Measurement: Linear Feet
 3. Base Bid Quantity: 2,860 LF
- L. Unit Price No. 12 – Pedestals:
1. Description: Install per E series drawings and Division 26 specifications.
 2. Unit of Measurement: Each
 3. Base Bid Quantity: 16 EA
- M. Unit Price No. 13 – Erosion Blanket (basis-of-design NAG C700BN)
1. Description: Install per specification section 312500.
 2. Unit of Measurement: Square Yard
 3. Base Bid Quantity: 3,704 SY
- N. Unit Price No. 14 – TRM (basis-of-design Armormax)
1. Description: Install per specification section 312500.
 2. Unit of Measurement: Square Yard
 3. Base Bid Quantity: 553 SY

END OF SECTION 012200

SECTION 012300 - ALTERNATES

PART 1 - GENERAL

1.1 RELATED DOCUMENTS

- A. Drawings and general provisions of the Contract, including General and Supplementary Conditions, Bid Form and other Division 1 Specification Sections, apply to this Section.

1.2 SUMMARY

- A. This Section includes administrative and procedural requirements governing Alternates.

1.3 DEFINITIONS

- A. Definition: An alternate is an amount proposed by bidders and stated on the Bid Form for certain work defined in the Bidding Requirements that may be added to the Base Bid amount if the Owner decides to accept a corresponding change in either the amount of construction to be completed, or in the products, materials, equipment, systems, or installation methods described in the Contract Documents.

- 1. The cost for each alternate is the net addition to the Contract Sum to incorporate the Alternate into the Work. No other adjustments are made to the Contract Sum.

- B. No additional time will be allowed for alternate work unless the number of work days is so stated on the bid form.

1.4 PROCEDURES

- A. Coordination: Modify or adjust affected adjacent Work as necessary to completely and fully integrate the Alternate Work into the Project.

- 1. Include as part of each alternate, miscellaneous devices, accessory objects, and similar items incidental to or required for a complete installation whether or not mentioned as part of the Alternate.

- B. Notification: The award of the Contract will indicate whether alternates have been accepted or rejected.

- C. Execute accepted alternates under the same conditions as other Work of this Contract.

- D. Schedule: A “Schedule of Alternates” is included at the end of this Section. Specification Sections referenced in the Schedule contain requirements for materials necessary to achieve the Work described under each alternate.

PART 2 - PRODUCTS (Not Applicable)

PART 3 - EXECUTION

3.1 SCHEDULE OF ALTERNATES

- A. Alternate No. 1: *Office Shed: The proposed alternative includes a 8' x 12' Tuff Shed-type office shed.*
- Model: Premier Pro Ranch
 - 10'x10' Shed with 7-foot walls
 - 2x4 Framing on 16-inch centers
 - Galvanized floor framing
 - 5/12 Roof pitch with eaves
 - Roof color: weathered wood
 - One set 3ft x 6ft x 2inch double doors (6ft wide total)
 - Cement panel siding
 - Siding color: brick dust
 - Trim color: tundra frost
- B. Alternate No. 2: *Asphalt pavement on campground entry road. Section detail shown on sheet C-103 Pavement Plan.*

END OF SECTION 012300

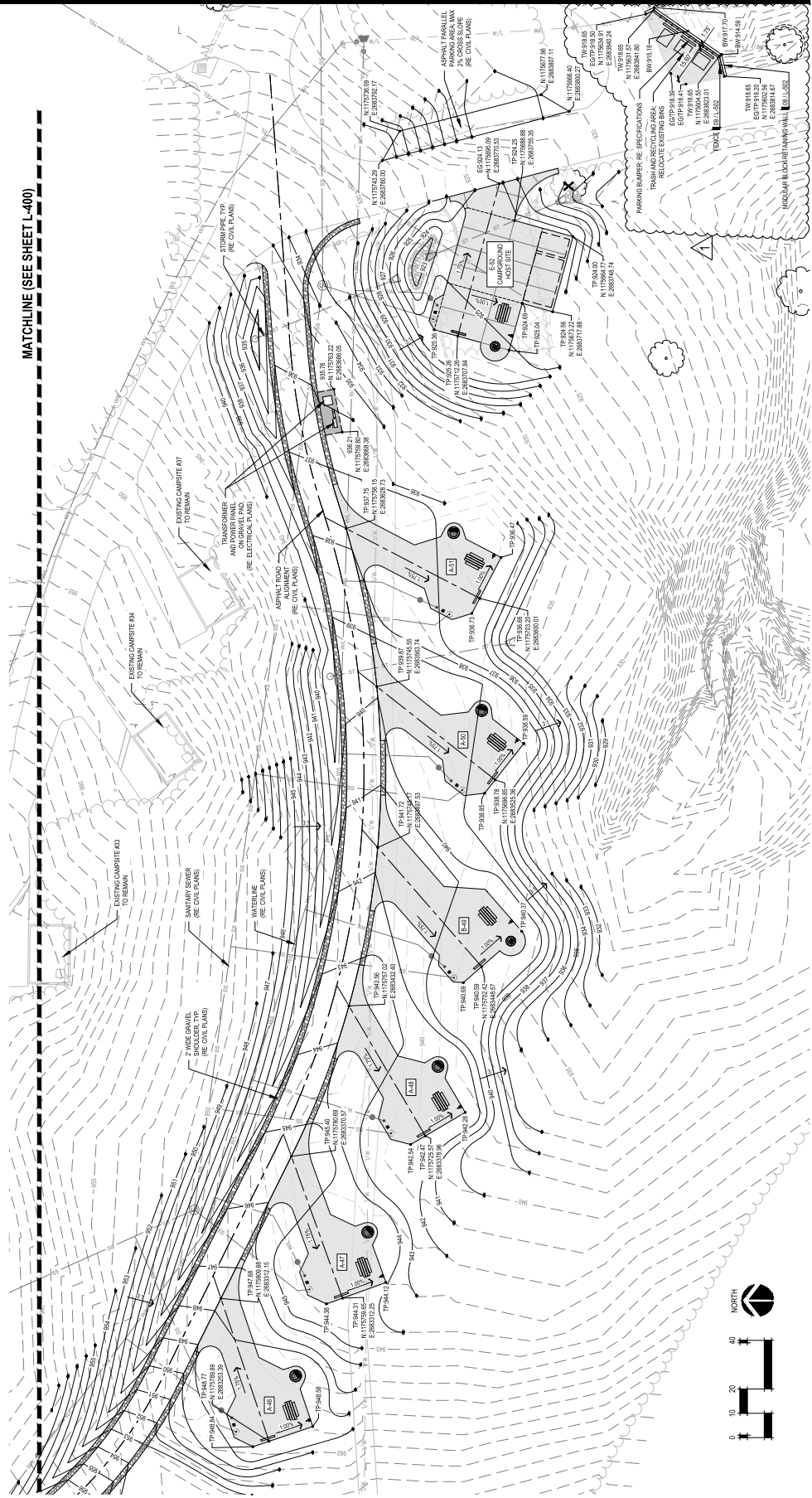
CAMPSITE LEGEND

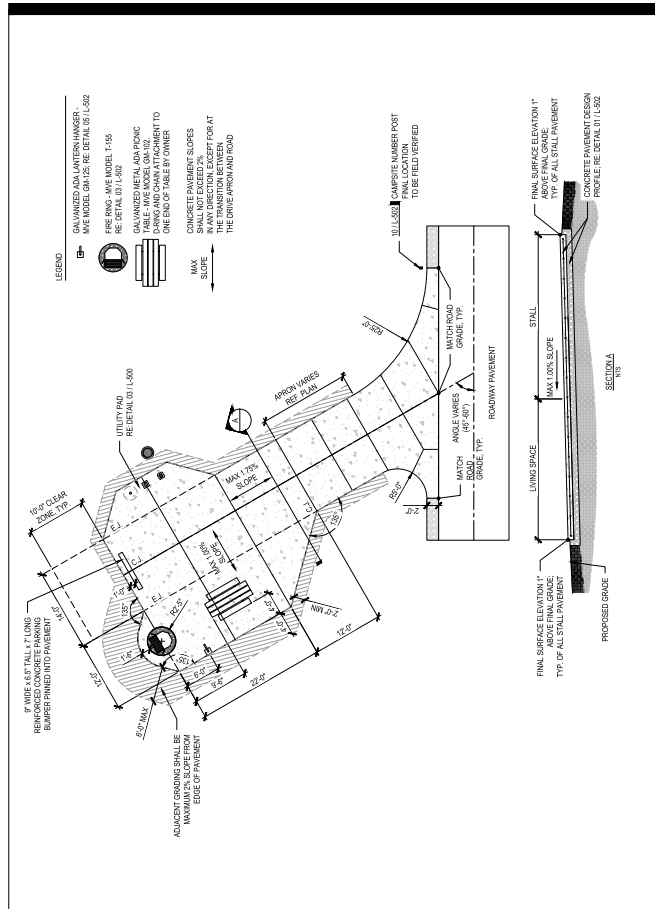
- 1A BACK IN STANDARD CAMPSITE (FRONT SIDE) - 15' WIDE CONCRETE PAVEMENT
- 1B BACK IN STANDARD CAMPSITE (REAR SIDE) - 15' WIDE CONCRETE PAVEMENT
- 2A BACK IN STANDARD CAMPSITE (FRONT SIDE) - 15' WIDE CONCRETE PAVEMENT
- 2B BACK IN STANDARD CAMPSITE (REAR SIDE) - 15' WIDE CONCRETE PAVEMENT
- 3A FULL THROUGH CAMPSITE - 15' WIDE CONCRETE PAVEMENT
- 3B BACK IN STANDARD CAMPSITE (FRONT SIDE) - 15' WIDE CONCRETE PAVEMENT
- 3C BACK IN STANDARD CAMPSITE (REAR SIDE) - 15' WIDE CONCRETE PAVEMENT

SITE LEGEND

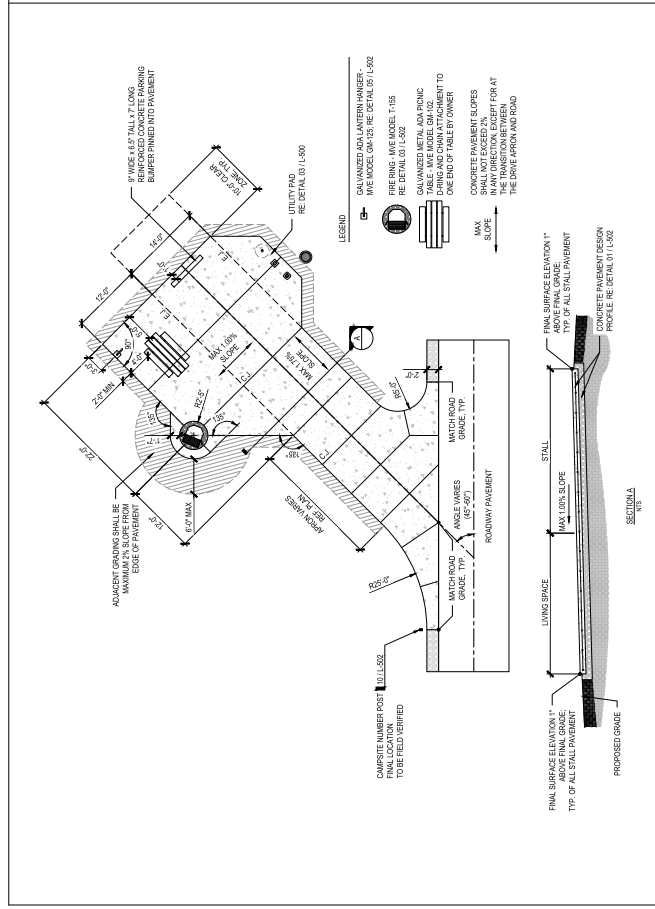
- POURED-IN-PLACE CONCRETE PAVEMENT - 4" THICK
RE DETAIL 01 L 502 AND SPECIFICATION 32133
- POURED-IN-PLACE CONCRETE PAVEMENT - 4" THICK
RE DETAIL 06 L 502 AND SPECIFICATION 32133
- TREE PROTECTION FENCING
RE DETAIL 01 L 502
- EXISTING TREE AND STUMP (PER NOI DIA. AND LARGER)
TO BE REMOVED (RE SPECIFICATIONS)
- CENTERLINE OF PROPOSED ROAD AND
CAMPSITE ALIGNMENT
- EG - EXISTING GRADE
- TP - TOP OF PAVEMENT
OR CURB/STEP

MATCHLINE (SEE SHEET L-400)

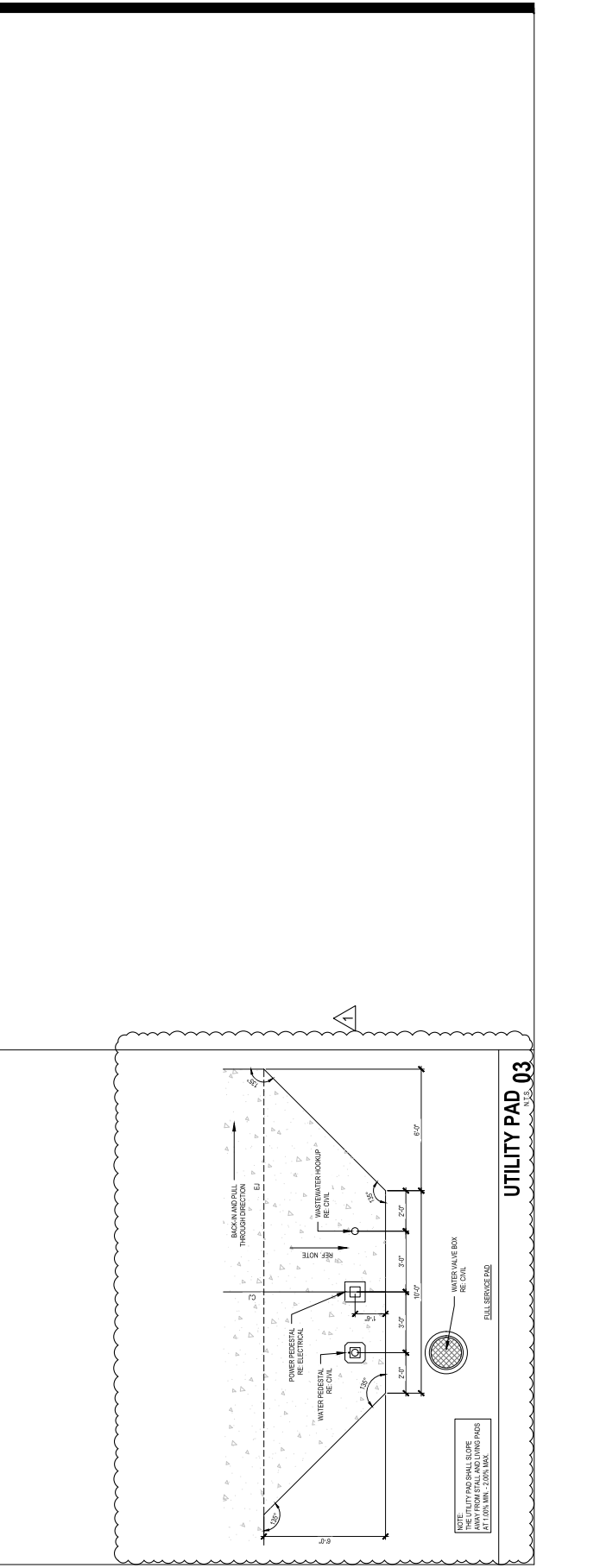




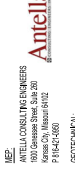
STALL STYLE C - BACK-IN STANDARD (LEFT SIDE) 02



STALL STYLE A - BACK-IN STANDARD (RIGHT SIDE) 01



UTILITY PAD 03



OFFICE OF ADMINISTRATION
DIVISION OF FACILITIES
MANAGEMENT,
DESIGN AND CONSTRUCTION

DEPARTMENT OF
NATURAL RESOURCES,
MISSOURI STATE PARKS

NEW PREMIUM CAMPSITES

WESTON BEND STATE PARK
16600 MO-45 HWY
WESTON, MO 64098

PROJECT # X2231-01
SITE # 5118
FACILITY # 7815118006

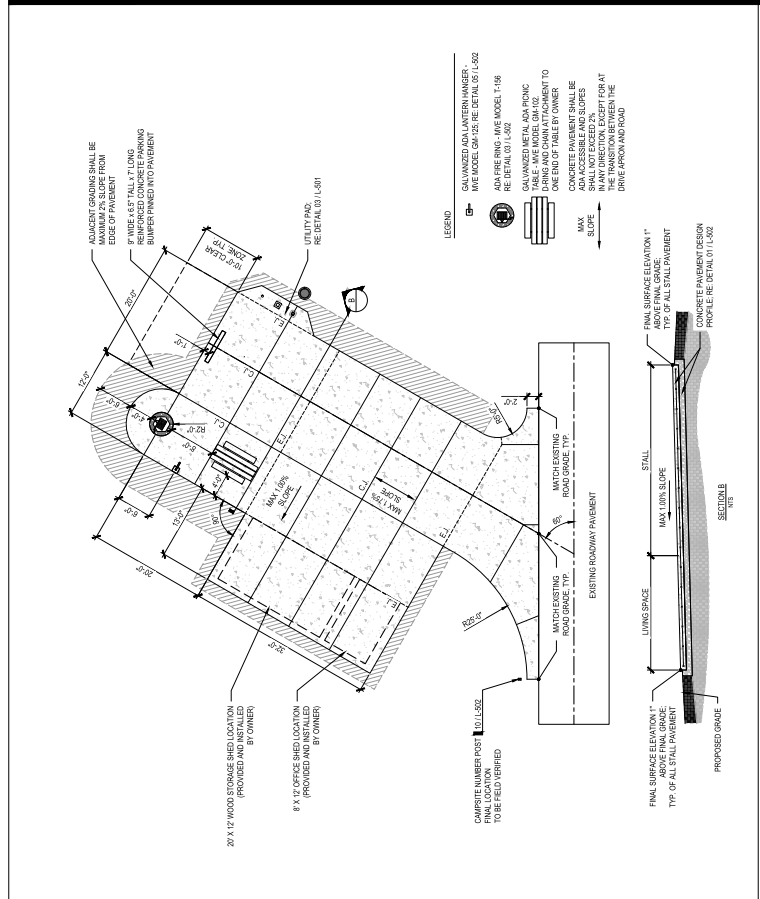
| | |
|-------------|------------|
| REVISION: | |
| DATE: | |
| BY: | |
| REVISION: | |
| DATE: | |
| BY: | |
| REVISION: | |
| DATE: | |
| BY: | |
| ISSUE DATE: | 12/12/2023 |

CAD DWG FILE:
CHECKED BY: CDP
DESIGNED BY: AJS, LCBP

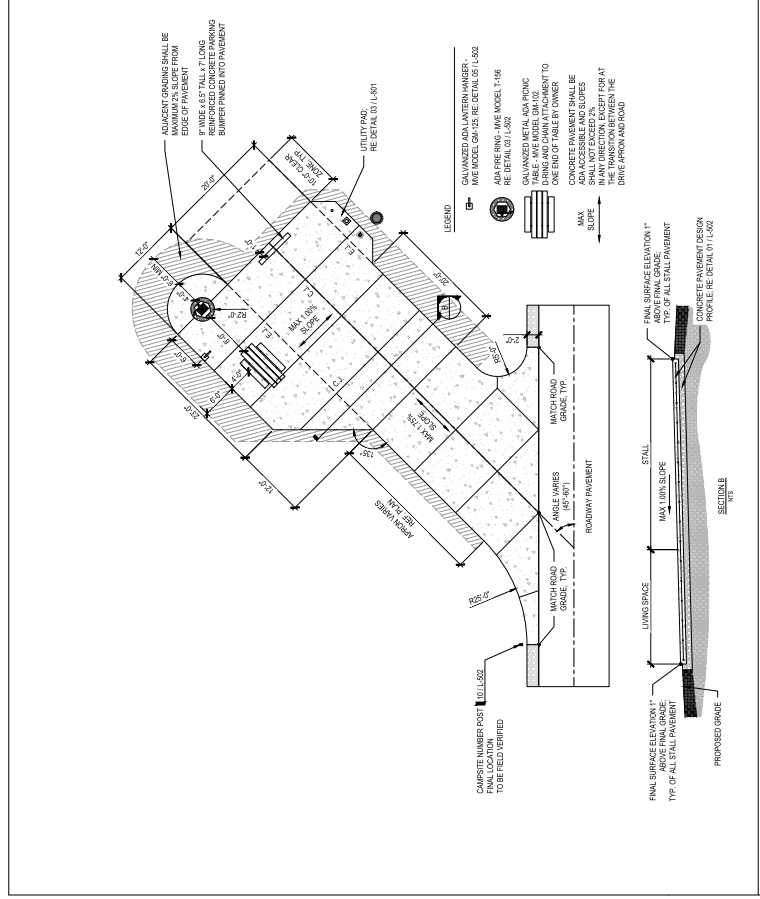
SHEET TITLE:
SITE DETAILS

SHEET NUMBER:

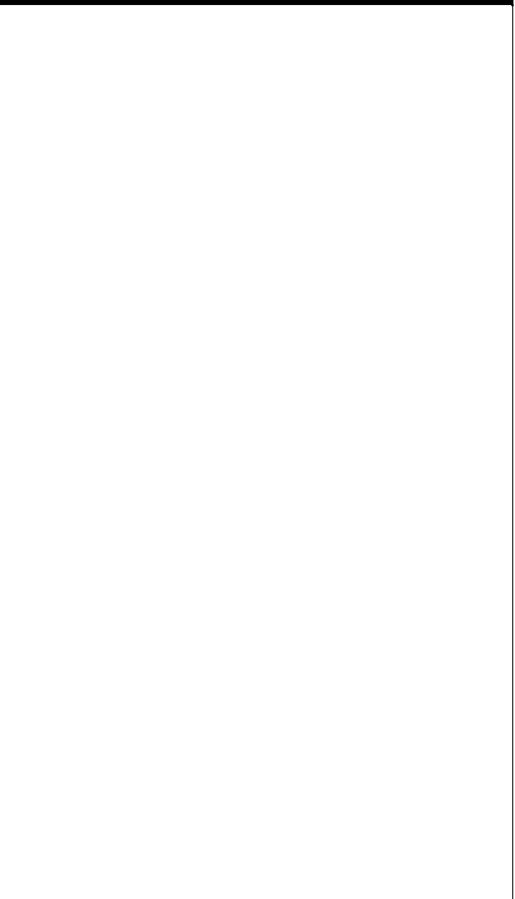
L-501
SHEET 7 OF 36
12/12/2023



STALL STYLE B - ADA BACK-IN STANDARD CAMPSITE 01
N.T.S.



STALL STYLE E - ADA CAMPGROUND HOST SITE 02
N.T.S.



ADA UTILITY PAD 03
N.T.S.



OFFICE OF ADMINISTRATION
DIVISION OF FACILITIES
MANAGEMENT,
DESIGN AND CONSTRUCTION

DEPARTMENT OF
NATURAL RESOURCES,
MISSOURI STATE PARKS

NEW PREMIUM CAMPSITES

WESTON BEND STATE PARK
16600 MO-45 HWY
WESTON, MO 64098

PROJECT # X2231-01
SITE # 5118
FACILITY # 7815118006

| | |
|-------------|------------|
| REVISION: | |
| DATE: | |
| BY: | |
| REVISION: | |
| DATE: | |
| BY: | |
| REVISION: | |
| DATE: | |
| BY: | |
| ISSUE DATE: | 12/12/2023 |

CAD DWG FILE:
CHECKED BY: CDP
DESIGNED BY: AJS, LCBP

SHEET TITLE:
SITE DETAILS

SHEET NUMBER:

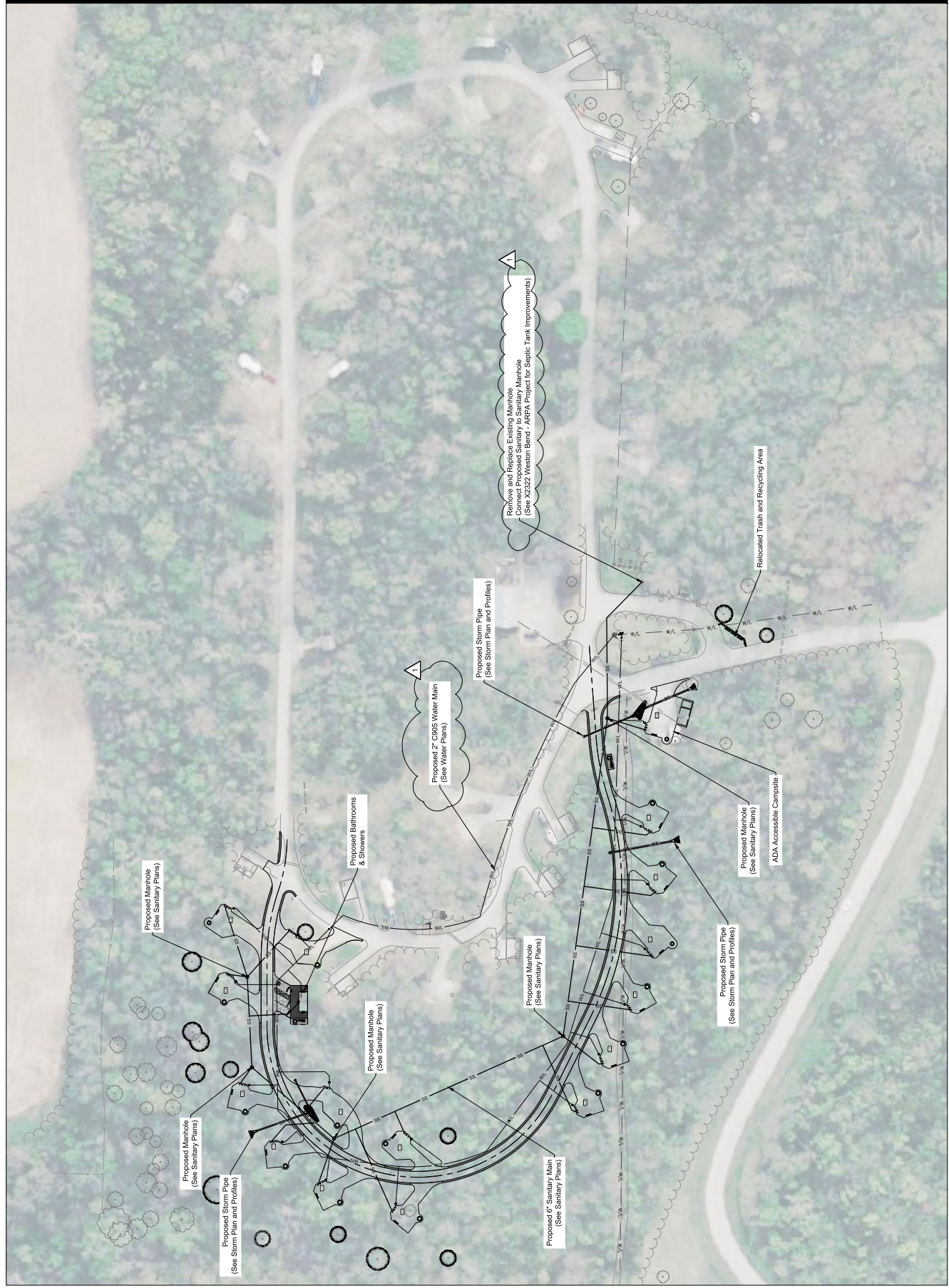
L-501
SHEET 7 OF 36
12/12/2023

| | |
|-----------------|------------|
| REVISION NUMBER | 1 |
| DATE | 07/27/2024 |
| REVISION | |
| REVISION | |
| REVISION | |
| DATE | |
| ISSUE DATE | 12/12/2023 |

| | |
|--------------|-----|
| CAD DWG FILE | MIS |
| CHECKED BY | MIS |
| DESIGNED BY | ZJM |

SHEET TITLE:
GENERAL LAYOUT

SHEET NUMBER:
C-102



LANDSCAPE ARCHITECT:



1025 N. 202ND STREET
14100 Shawnee, MO 64151
Kansas City, Missouri 64108
781.252.5600



OFFICE OF ADMINISTRATION
DIVISION OF FACILITIES
MANAGEMENT,
DESIGN AND CONSTRUCTION

DEPARTMENT OF
NATURAL RESOURCES,
MISSOURI STATE PARKS

NEW PREMIUM CAMPSITES

WESTON BEND STATE PARK
16600 MO-45 HWY
WESTON, MO 64498

PROJECT # X2221-01
SITE # S118
FACILITY # 7815118006

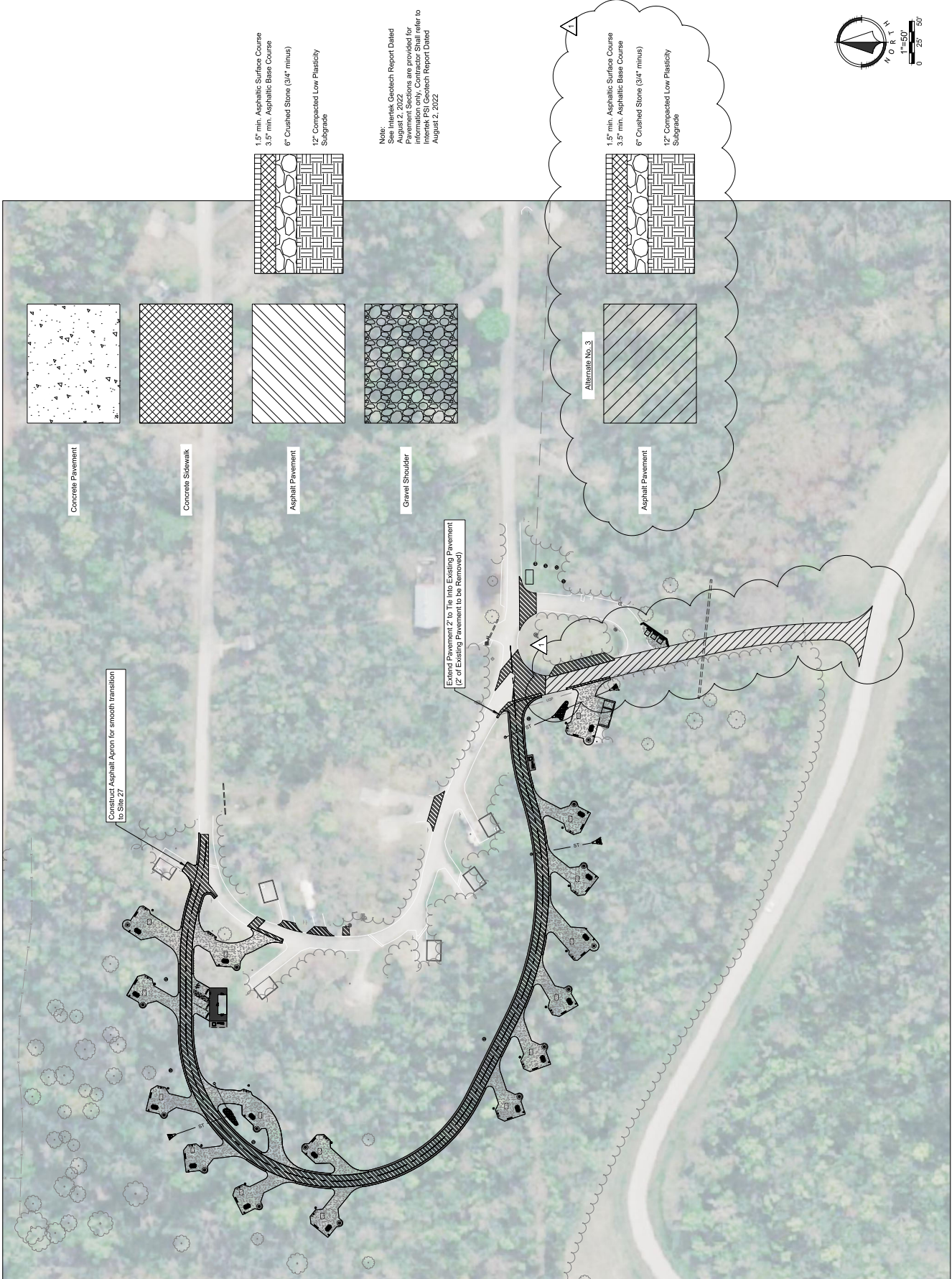
| | |
|-------------|------------|
| REVISIONS: | NO. 01 |
| DATE: | 10/20/2024 |
| REVISION: | |
| DATE: | |
| REVISION: | |
| DATE: | |
| ISSUE DATE: | 12/12/2023 |

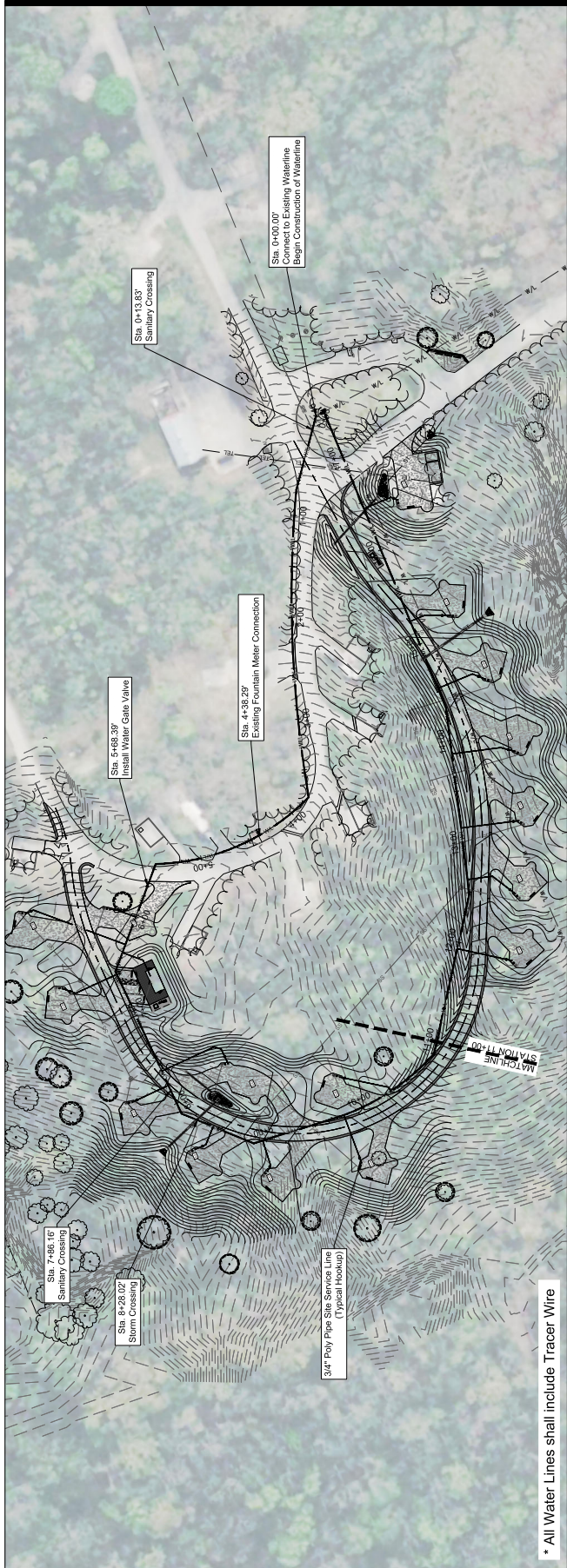
| | |
|---------------|-----|
| CAD DWG FILE: | |
| CREATED BY: | MMS |
| CHECKED BY: | ZMM |
| DESIGNED BY: | ZMM |

SHEET TITLE:
PAVEMENT PLAN

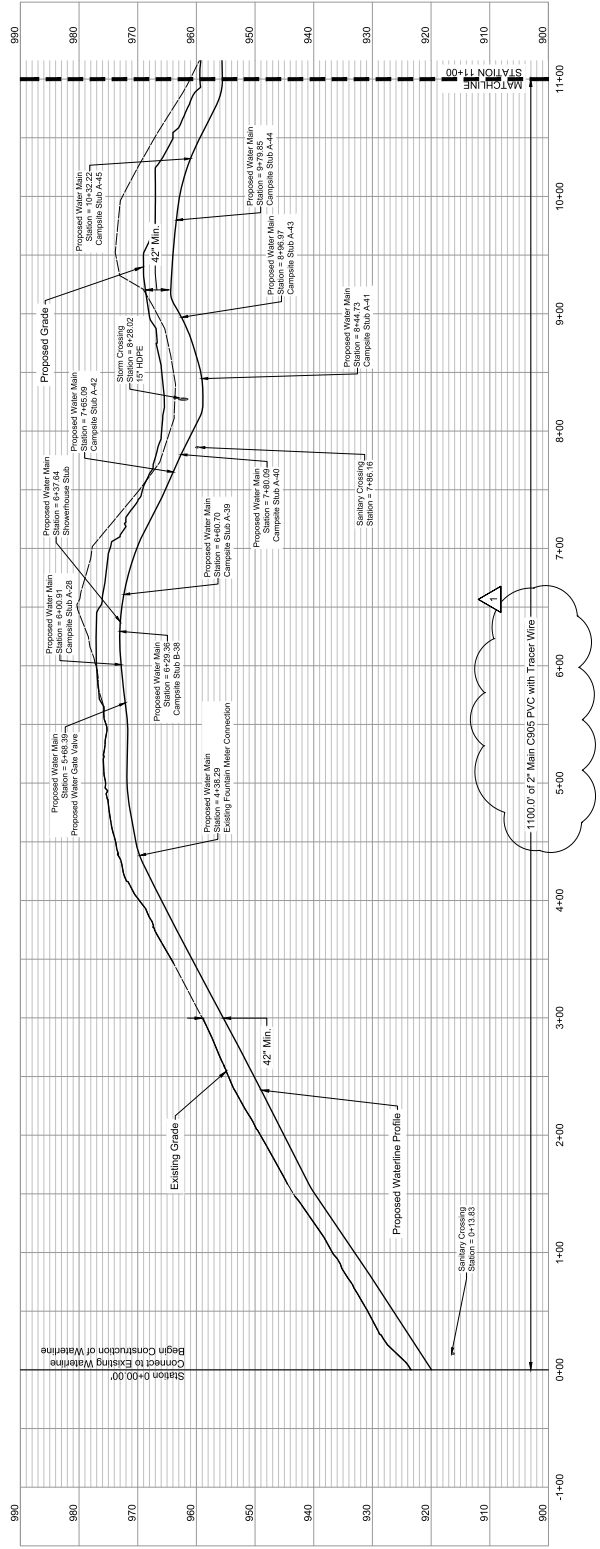
SHEET NUMBER:

C-103





Waterline Profile



* All Water Lines shall include Tracer Wire

LANDSCAPE ARCHITECT:



VIREO, INC. 20232383
4149 Sibley Lane, Suite 101
Kansas City, Missouri 64108
P: 816-251-8600

SURVEYOR & CIVIL ENGINEER:



RESURGENCE ENGINEERING
401 E. 7th Street
Kansas City, Missouri 64108
P: 816-251-8600

GENERAL CONTRACTOR:



ANTELLA CONSTRUCTION, INC.
1000 Gateway Street, Suite 200
Kansas City, Missouri 64102
P: 816-241-4300

GENERAL CONTRACTOR:



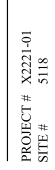
ANTELLA CONSTRUCTION, INC.
1000 Gateway Street, Suite 200
Kansas City, Missouri 64102
P: 816-241-4300

GENERAL CONTRACTOR:



ANTELLA CONSTRUCTION, INC.
1000 Gateway Street, Suite 200
Kansas City, Missouri 64102
P: 816-241-4300

GENERAL CONTRACTOR:



ANTELLA CONSTRUCTION, INC.
1000 Gateway Street, Suite 200
Kansas City, Missouri 64102
P: 816-241-4300

GENERAL CONTRACTOR:



ANTELLA CONSTRUCTION, INC.
1000 Gateway Street, Suite 200
Kansas City, Missouri 64102
P: 816-241-4300

GENERAL CONTRACTOR:



ANTELLA CONSTRUCTION, INC.
1000 Gateway Street, Suite 200
Kansas City, Missouri 64102
P: 816-241-4300

GENERAL CONTRACTOR:

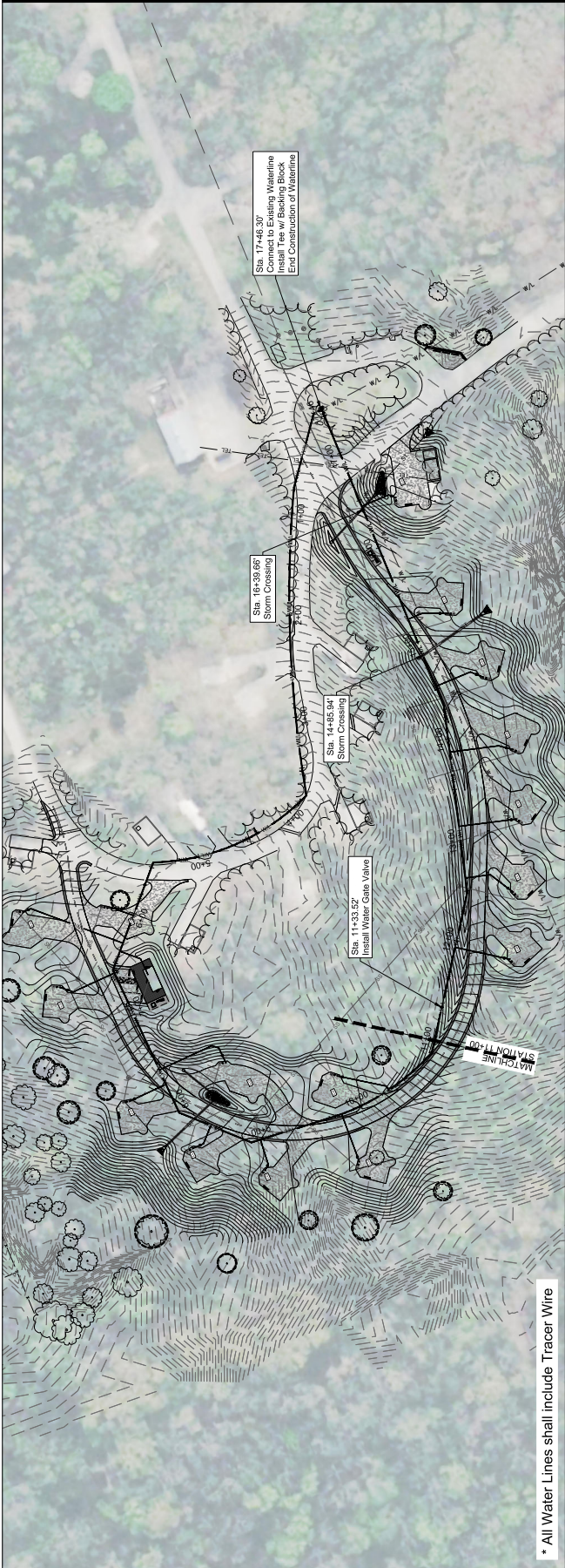


ANTELLA CONSTRUCTION, INC.
1000 Gateway Street, Suite 200
Kansas City, Missouri 64102
P: 816-241-4300

GENERAL CONTRACTOR:

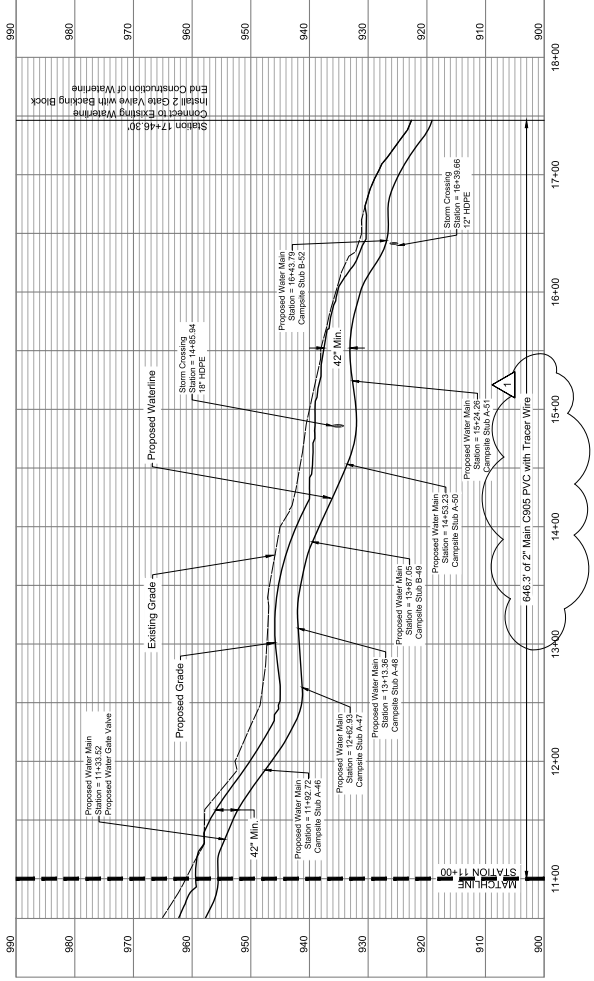


ANTELLA CONSTRUCTION, INC.
1000 Gateway Street, Suite 200
Kansas City, Missouri 64102
P: 816-241-4300



* All Water Lines shall include Tracer Wire

Waterline Profile



WESTON BEND STATE PARK
16600 MO-45 HWY
WESTON, MO 64098

PROJECT # X2231-01
SITE # 5118
FACILITY # 7815118006

REVISION NUMBER:
DATE: 07/27/2024
REVISION:
REVISION:
REVISION:
DATE:
ISSUE DATE: 12/12/2023

CAD DWG FILE:
CHECKED BY: MMS
DESIGNED BY: ZMM

SHEET TITLE:
WATERLINE PLAN &
PROFILE II

SHEET NUMBER:

C-405



OFFICE OF ADMINISTRATION
DIVISION OF FACILITIES
MANAGEMENT,
DESIGN AND CONSTRUCTION

DEPARTMENT OF
NATURAL RESOURCES,
MISSOURI STATE PARKS

NEW PREMIUM CAMPSITES

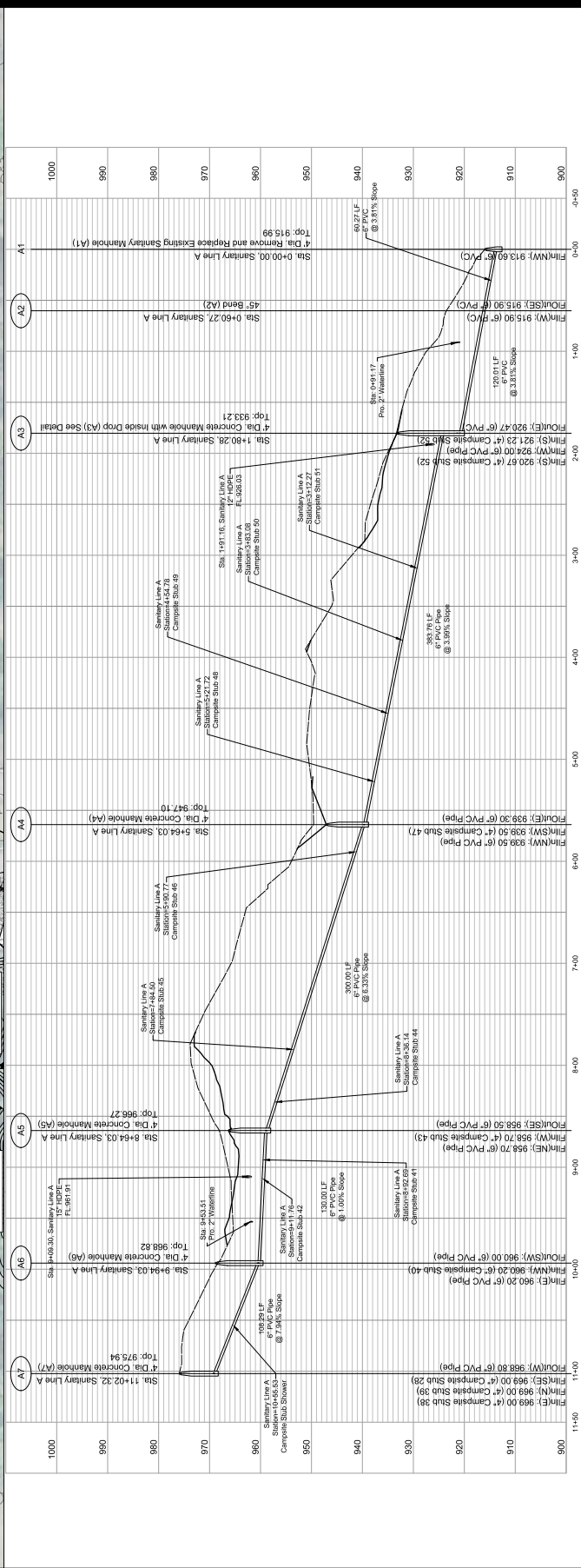
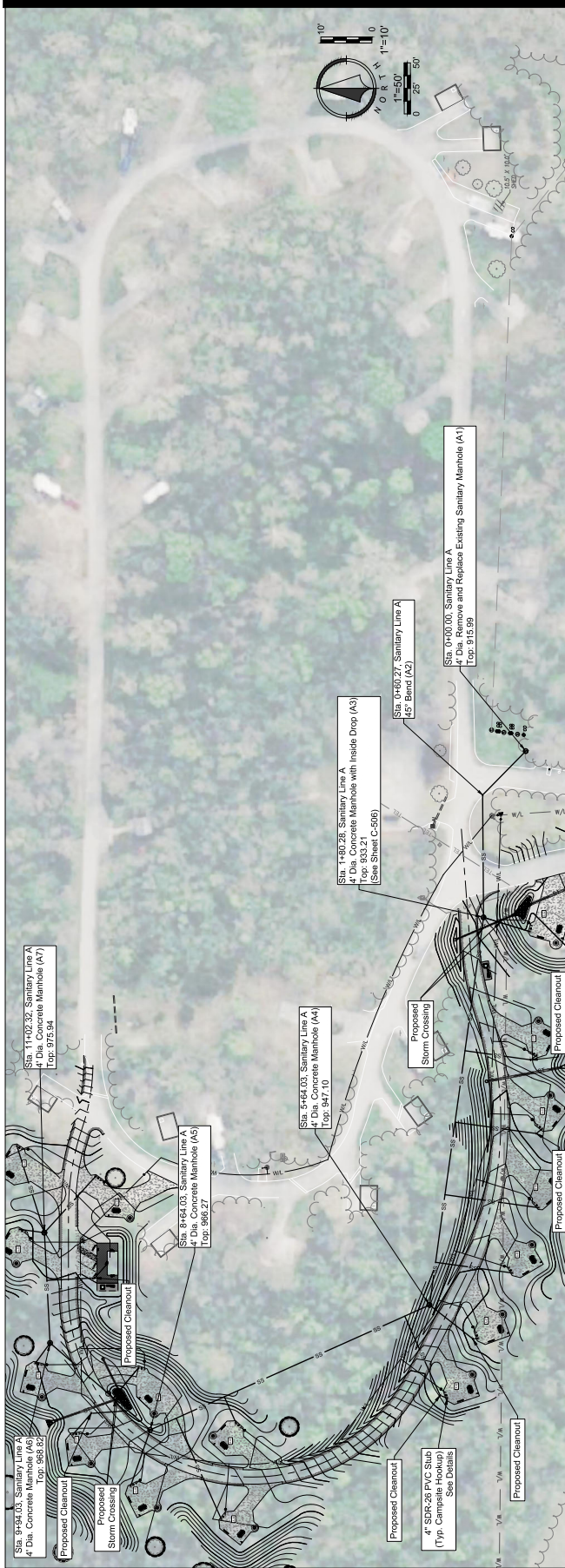
WESTON BEND STATE PARK
16600 MO-45 HWY
WESTON, MO 64098

PROJECT # X2321-01
SITE # 5118
FACILITY # 7815118006

REVISION: 02/01/2023
DATE: 02/02/2023
REVISION: 02/02/2023
DATE: 02/02/2023
ISSUE DATE: 12/12/2023

CAD DWG FILE:
CHECKED BY: MMS
DESIGNED BY: ZMM
SHEET TITLE:
SANITARY PLAN
& PROFILE

SHEET NUMBER:
C-501



*Proposed Septic Tank removed from project
See X2322 Weston Bend - ARPA Project for Septic Tank Details



LINE A

| Campsite Number | Downstream Manhole | Distance Down Stream (LF) | Connection Type | Length of Service Line (LF) | Type of Service Line | Slope of Service Line | FL @ Connection | Tee Offset (T) | Length of Riser (R) | Length of Lateral (L) | Proposed Grade @ EOS +/- (LLC) | Service Line EOS FL Elevation | Vertical Stub (LF) |
|-----------------|--------------------|---------------------------|-----------------|-----------------------------|----------------------|-----------------------|-----------------|----------------|---------------------|-----------------------|--------------------------------|-------------------------------|--------------------|
| 52 | A2 | 159.76 | 6"x4" TEE | 47.57 | 4" PVC (SDR-26) | 2.00% | 920.67 | 0.50 | 0.00 | 47.57 | 925.37 | 922.12 | 3.25 |
| 51 | A3 | 131.91 | 6"x4" TEE | 72.48 | 4" PVC (SDR-26) | 2.00% | 929.26 | 0.50 | 3.00 | 70.90 | 937.00 | 933.73 | 3.27 |
| 50 | A3 | 202.81 | 6"x4" TEE | 87.75 | 4" PVC (SDR-26) | 2.00% | 932.09 | 0.50 | 2.00 | 86.70 | 939.10 | 936.03 | 3.07 |
| 49 | A3 | 274.51 | 6"x4" TEE | 92.78 | 4" PVC (SDR-26) | 2.00% | 934.95 | 0.50 | 0.00 | 92.78 | 940.80 | 937.31 | 3.49 |
| 48 | A3 | 341.45 | 6"x4" TEE | 76.02 | 4" PVC (SDR-26) | 2.00% | 937.62 | 0.50 | 0.00 | 76.02 | 942.80 | 939.64 | 3.16 |
| 47 | A3 | 383.76 | 6"x4" TEE | 59.00 | 4" PVC (SDR-26) | 2.00% | 939.51 | 0.50 | 0.00 | 59.00 | 944.60 | 941.19 | 3.41 |
| 46 | A4 | 26.74 | 6"x4" TEE | 92.61 | 4" PVC (SDR-26) | 2.00% | 941.19 | 0.50 | 2.50 | 91.30 | 948.80 | 945.65 | 3.15 |
| 45 | A4 | 220.47 | 6"x4" TEE | 28.39 | 4" PVC (SDR-26) | 2.00% | 953.46 | 0.50 | 13.00 | 21.56 | 968.40 | 965.45 | 2.95 |
| 44 | A4 | 266.8 | 6"x4" TEE | 110.58 | 4" PVC (SDR-26) | 2.00% | 956.39 | 0.50 | 8.00 | 106.38 | 968.90 | 965.82 | 3.08 |
| 43 | A4 | 300 | 6"x4" TEE | 58.47 | 4" PVC (SDR-26) | 2.00% | 958.69 | 0.50 | 5.75 | 55.45 | 968.25 | 965.19 | 3.06 |
| 42 | A5 | 47.73 | 6"x4" TEE | 38.82 | 4" PVC (SDR-26) | 2.00% | 959.18 | 0.50 | 0.00 | 38.82 | 966.35 | 960.45 | 5.90 |
| 41 | A5 | 28.66 | 6"x4" TEE | 63.52 | 4" PVC (SDR-26) | 2.00% | 958.99 | 0.50 | 2.50 | 63.52 | 966.10 | 962.88 | 3.22 |
| 40 | A5 | 130 | 6"x4" TEE | 24.67 | 4" PVC (SDR-26) | 2.00% | 960.20 | 0.50 | 1.00 | 24.14 | 965.10 | 962.03 | 3.07 |
| SHWR | A6 | 61.5 | 6"x4" TEE | 66.85 | 4" PVC (SDR-26) | 2.00% | 965.08 | 0.50 | 5.00 | 64.22 | 975.75 | 971.12 | 4.63 |
| 39 | A7 | 0 | 6"x4" TEE | 24.66 | 4" PVC (SDR-26) | 2.00% | 969.00 | 0.50 | 2.00 | 23.61 | 974.79 | 971.67 | 3.12 |
| 38 | A7 | 0 | 6"x4" TEE | 89.45 | 4" PVC (SDR-26) | 2.00% | 969.00 | 0.50 | 1.50 | 88.66 | 975.80 | 972.55 | 3.25 |
| 28 | A7 | 0 | 6"x4" TEE | 74.67 | 4" PVC (SDR-26) | 2.00% | 969.00 | 0.50 | 3.00 | 73.09 | 976.70 | 973.51 | 3.19 |

SANITARY CAPACITY CALCS

| Downstream Manhole | Users | Sewer Demand (GPD) | Contributing Flow (GPD) | Total Average Flow (GPD) | Total Average Flow (cfs) | Peak Factor | Total Peak Flow (cfs) | Pipe Size (Inches) | Slope % | Full Flow Velocity (fps) | 67% Capacity (cfs) | Q | A | n | R | P |
|--------------------|-------|--------------------|-------------------------|--------------------------|--------------------------|-------------|-----------------------|--------------------|---------|--------------------------|--------------------|------|------|-------|------|------|
| Shower House | 40 | 15 | 600 | 600 | 0.0009 | 3 | 0.0028 | 6 | 7.94% | 8.1 | 1.1 | 1.58 | 0.20 | 0.013 | 0.13 | 1.57 |
| A6 | 3 | 120 | 360 | 960 | 0.0015 | 3 | 0.0045 | 6 | 7.94% | 8.1 | 1.1 | 1.58 | 0.20 | 0.013 | 0.13 | 1.57 |
| A5 | 3 | 120 | 360 | 1320 | 0.0020 | 3 | 0.0061 | 6 | 1.00% | 2.9 | 0.4 | 0.56 | 0.20 | 0.013 | 0.13 | 1.57 |
| A4 | 4 | 120 | 480 | 1800 | 0.0028 | 4 | 0.0111 | 6 | 6.33% | 7.2 | 0.9 | 1.41 | 0.20 | 0.013 | 0.13 | 1.57 |
| A3 | 5 | 120 | 600 | 2400 | 0.0037 | 5 | 0.0186 | 6 | 3.99% | 5.7 | 0.8 | 1.12 | 0.20 | 0.013 | 0.13 | 1.57 |
| A2 | 1 | 120 | 120 | 2520 | 0.0039 | 6 | 0.0234 | 6 | 5.00% | 6.4 | 0.8 | 1.25 | 0.20 | 0.013 | 0.13 | 1.57 |

Note: Minimum Cleansing Velocity = 2 fps per MDNR Minimum Design Standards for Gravity Sewers

LANDSCAPE ARCHITECT:
vireo
VCS, INC. 20232383
14149 Sibley, Suite 101
Kansas City, Missouri 64116
P: 816.234.8000

SURVEYOR & CIVIL ENGINEER:
REINFORCEMENT CONTRACTOR:
A.O.E. P.C. Inc.
1111 S. Main Street, Suite 101
Kansas City, Missouri 64108
P: 816.234.8000

ME:
1001 Locust, Suite 201
300 Locust Street, Suite 201
Kansas City, Missouri 64102
P: 816.234.8000

SECTERMINAL:
1001 Locust, Suite 201
300 Locust Street, Suite 201
Kansas City, Missouri 64102
P: 816.234.8000

Antella
Antella
1001 Locust, Suite 201
300 Locust Street, Suite 201
Kansas City, Missouri 64102
P: 816.234.8000

intertek
intertek
1001 Locust, Suite 201
300 Locust Street, Suite 201
Kansas City, Missouri 64102
P: 816.234.8000

OFFICE OF ADMINISTRATION
DIVISION OF FACILITIES
MANAGEMENT,
DESIGN AND CONSTRUCTION

DEPARTMENT OF
NATURAL RESOURCES,
MISSOURI STATE PARKS

NEW PREMIUM CAMPSITES

WESTON BEND STATE PARK
16600 MO-45 HWY
WESTON, MO 64098

PROJECT # X2231-01
SITE # 5118
FACILITY # 7815118006

REVISION: 02/01/2024
DATE: 02/02/2024
REVISION:
DATE:
REVISION:
DATE:
ISSUE DATE: 12/12/2023

CAD DWG FILE:
CHECKED BY: MMS
DESIGNED BY: ZMM

SHEET TITLE:
SANITARY STUBS &
CALCS

SHEET NUMBER:

C-503



OFFICE OF ADMINISTRATION
DIVISION OF FACILITIES
MANAGEMENT,
DESIGN AND CONSTRUCTION
DEPARTMENT OF
NATURAL RESOURCES,
MISSOURI STATE PARKS

NEW PREMIUM CAMPSITES

WESTON BEND STATE PARK
16600 MO-45 HWY
WESTON, MO 64498

PROJECT # X2231-01
SITE # 5118
FACILITY # 7815118006

REVISIONS (NONE)
DATE: 10/20/2023
REVISION:
REVISION:
REVISION:
DATE: 12/12/2023

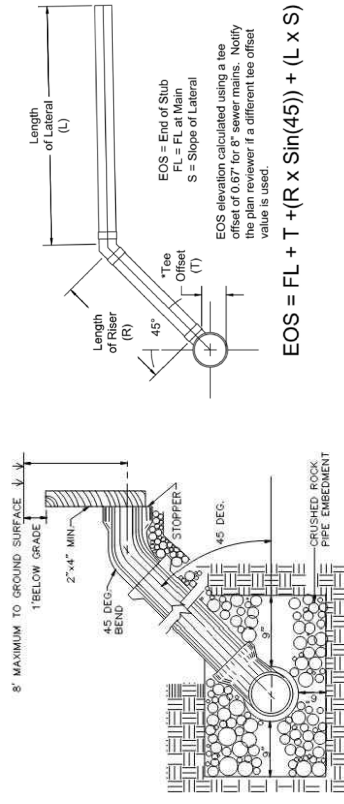
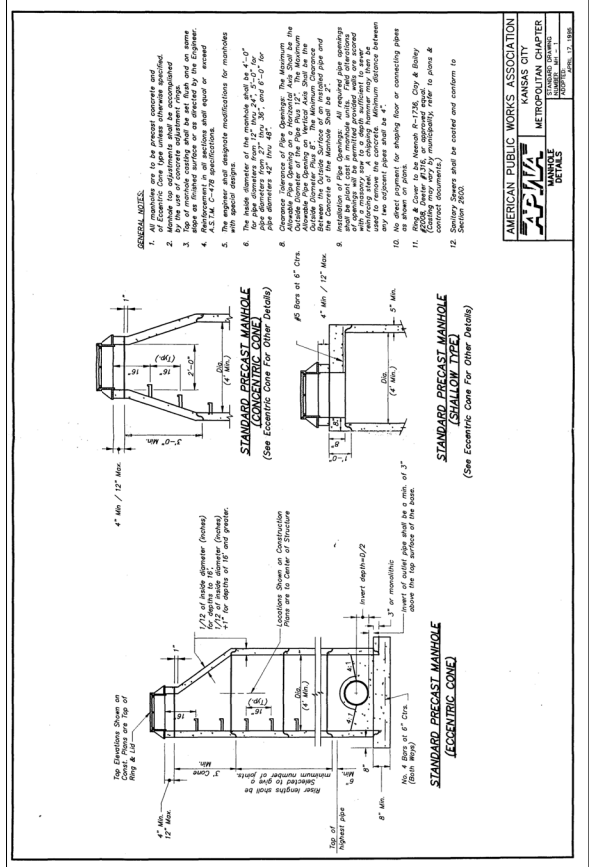
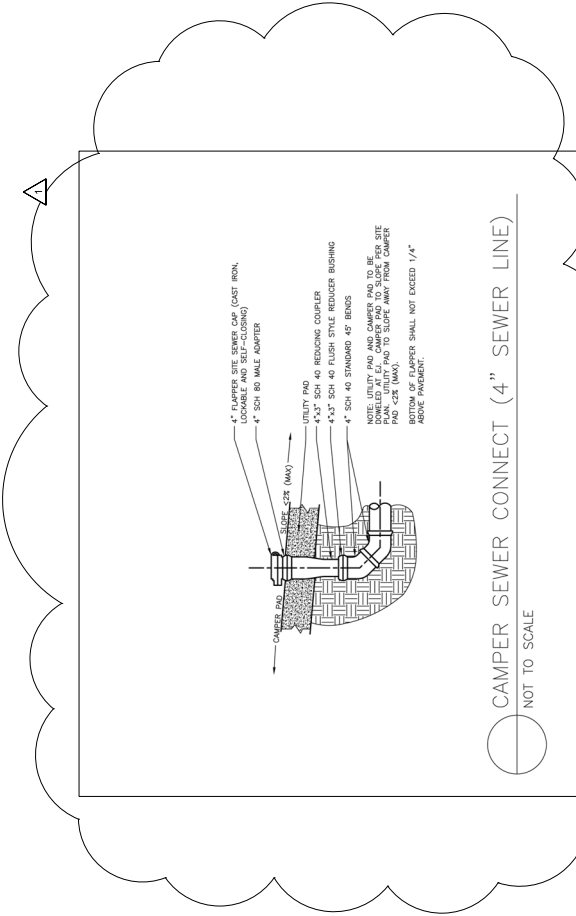
CAD DWG FILE:
CHECKED BY: MMS
DESIGNED BY: ZMM

SHEET TITLE:
SANITARY
DETAILS I

SHEET NUMBER:

C-504

The Tower Company, Inc.
4" RV Site Sewer Cap, Cast Metal
(Or approved equal)



STANDARD DEEP TRENCH SERVICE RISER
NOT TO SCALE

AMERICAN PUBLIC WORKS ASSOCIATION
KANSAS CITY
METROPOLITAN CHAPTER
MANHOLE DETAILS
REVISION 12-18-2023



US 103 2023 0383
1030 S. Olive St. Ste 101
Kansas City, Missouri 64108
P 816 234 8800

SURVEY & LEAD ENGINEER
REINFORCEMENT ENGINEER
40 E. 7th Street
Kansas City, Missouri 64108
P 816 234 8800

REGISTERED PROFESSIONAL ENGINEER
1030 S. Olive St. Ste 101
Kansas City, Missouri 64108
P 816 234 8800

SECTECHANICAL
1030 S. Olive St. Ste 101
Kansas City, Missouri 64108
P 816 234 8800

Antella
intertek
psi

**DIVISION OF ADMINISTRATION
DIVISION OF FACILITIES
MANAGEMENT,
DESIGN AND CONSTRUCTION**

**DEPARTMENT OF
NATURAL RESOURCES,
MISSOURI STATE PARKS**

NEW PREMIUM CAMPSITES

WESTON BEND STATE PARK
16600 MO-45 HWY
WESTON, MO 64098

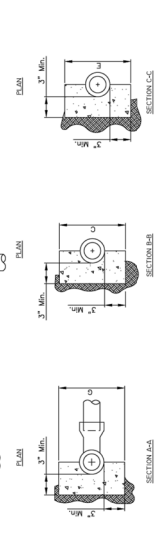
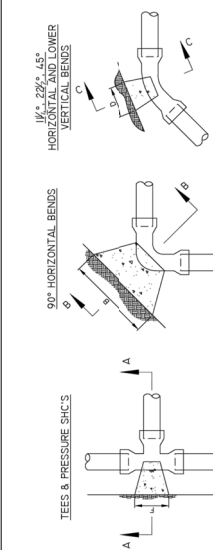
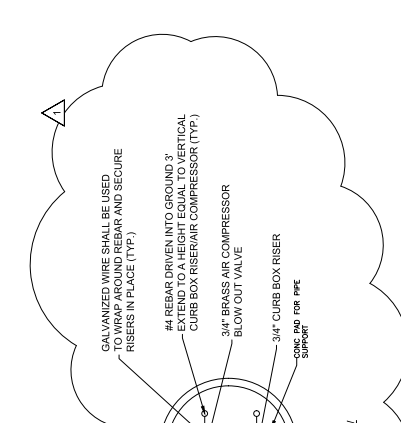
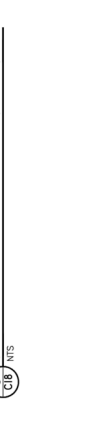
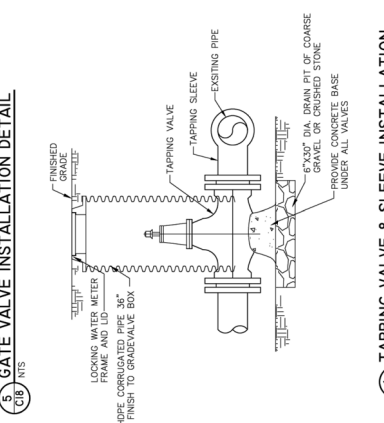
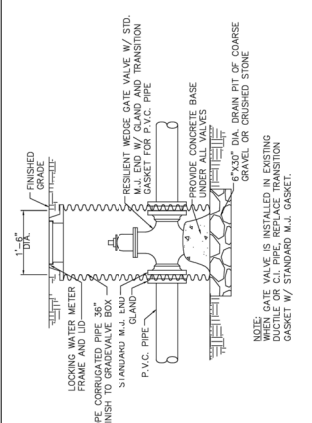
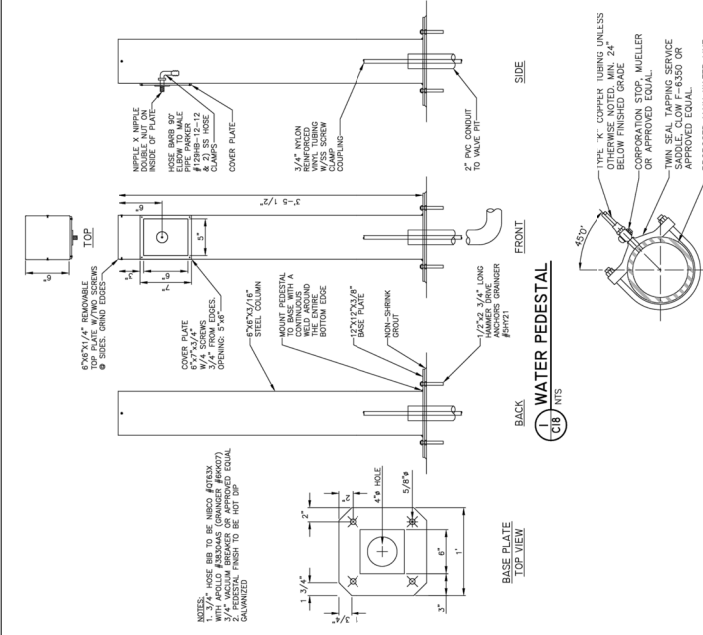
PROJECT # X2231-01
SITE # 5118
FACILITY # 7815118006

REVISIONS (REVISED)
DATE: 07/20/2024
REVISION:
REVISION:
DATE:
ISSUE DATE: 12/12/2023

CAD DWG FILE:
DRAWN BY:
CHECKED BY:
DESIGNED BY: ZMM

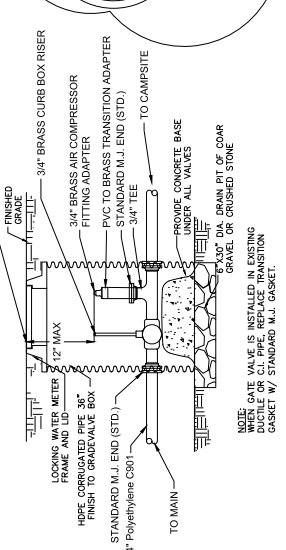
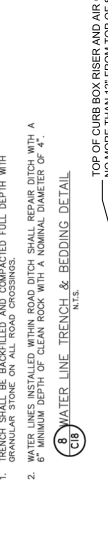
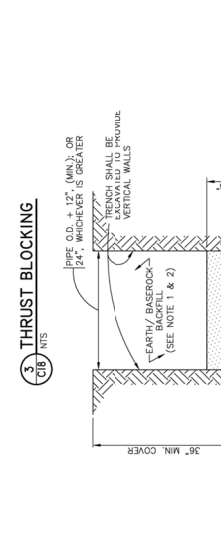
SHEET TITLE:
**WATER
DETAILS**

SHEET NUMBER:
C-506



THRUST BLOCKING

| PIPE SIZE | A | B | C | D | E | F | G |
|----------------|-----|-----|-----|-----|-----|-----|-----|
| 1" THRU 1 1/2" | 8" | 8" | 10" | 5" | 8" | 6" | 6" |
| 2" | 10" | 10" | 14" | 7" | 10" | 10" | 10" |
| 3" | 12" | 12" | 16" | 9" | 12" | 12" | 12" |
| 4" | 15" | 15" | 20" | 12" | 15" | 15" | 15" |



NOTE:
1. TRENCH SHALL BE BACKFILLED AND COMPACTED FULL DEPTH WITH GRANULAR STONE ON ALL ROAD CROSSINGS.
2. WATER LINES INSTALLED WITHIN ROAD DITCH SHALL REPAIR DITCH WITH A MINIMUM DEPTH OF CLEAN ROCK WITH A NOMINAL DIAMETER OF 4".

WATER LINE TRENCH & BEDDING DETAIL

TOP OF CURB BOX RISER AND AIR COMPRESSOR NO MORE THAN 12" FROM TOP OF SURFACE

LOCKING WATER METER FRAME AND LID
12" MAX
3/4" BRASS CURB BOX RISER
3/4" BRASS AIR COMPRESSOR FITTING ADAPTER
PVC TO BRASS TRANSITION ADAPTER
STANDARD M.J. END (STD.)
3/4" TEE
TO CAMPSITE
PROVIDE CONCRETE BASE UNDER ALL VALVES
TO MAIN
3/4" DIA. DRAIN PIT OF COAR GRAVEL OR CRUSHED STONE

NOTE:
WHEN GATE VALVE IS INSTALLED IN EXISTING DUCTILE IRON PIPE, REPLACE TRANSITION GASKET W/ STANDARD M.J. GASKET.

VALVE BOX - CAMPSITE



MONICA S. SANTOS - ENGINEER: NO. 00001446
LANDSCAPE ARCHITECT



VIREO CONSULTANTS
410 S. 20TH STREET
KANSAS CITY, MISSOURI 64108
P: 816.234.5600

SURVEYORS & ENGINEERS
REINFORCEMENT STRUCTURE
1101 N. GAY ST.
KANSAS CITY, MISSOURI 64108
P: 816.452.0600



ANTELLA
1000 COMMONS STREET, SUITE 200
KANSAS CITY, MISSOURI 64102
P: 816.452.1000

INTERTEK
12111 CENTENNIAL DRIVE
KANSAS CITY, MISSOURI 64116
P: 816.313.1800

OFFICE OF ADMINISTRATION
DIVISION OF FACILITIES
MANAGEMENT,
DESIGN AND CONSTRUCTION
DEPARTMENT OF
NATURAL RESOURCES,
MISSOURI STATE PARKS
NEW PREMIUM CAMPSITES

WESTON BEND STATE PARK
16600 MO-45 HWY
WESTON, MO 64498

PROJECT # X2221-01
SITE # 5118
FACILITY # 7815118006

REVISION:
DATE:
REVISION:
DATE:
REVISION: A, REV 1 (ADDENDUM #2)
DATE: 7/10/2023
ISSUE DATE: 12/12/2023

CAD DWG FILE:
CHECKED BY: MMS
DESIGNED BY: MMS

SHEET TITLE:
**ELECTRICAL
RISER AND
SCHEDULES**

SHEET NUMBER:
E-801
SHEET 23 OF 23

PANELBOARD DP3 (WESTON) SCHEDULE

Table with columns: REVISION, NOTE, NO., DESCRIPTION, LOCATION, MOUNTING SURFACE, BREAKER, AMP, LOCATION, WIRE, LOCATION, REV. DATE. Includes details for SERVICE RATIO, AMP, and various electrical components like SHOWER HOUSE, SPACE ONLY, etc.

PANELBOARD DP5 (WESTON) SCHEDULE

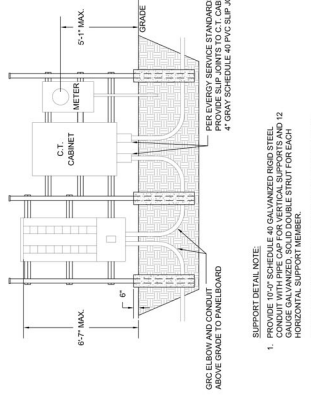
Table with columns: REVISION, NOTE, NO., DESCRIPTION, LOCATION, MOUNTING SURFACE, BREAKER, AMP, LOCATION, WIRE, LOCATION, REV. DATE. Includes details for SERVICE RATIO, AMP, and various electrical components like SPACE ONLY, etc.

PANELBOARD PP1 (WESTON) SCHEDULE

Table with columns: REVISION, NOTE, NO., DESCRIPTION, LOCATION, MOUNTING SURFACE, BREAKER, AMP, LOCATION, WIRE, LOCATION, REV. DATE. Includes details for SERVICE RATIO, AMP, and various electrical components like 150% BUS, 2 WIRING IN CABINET, etc.

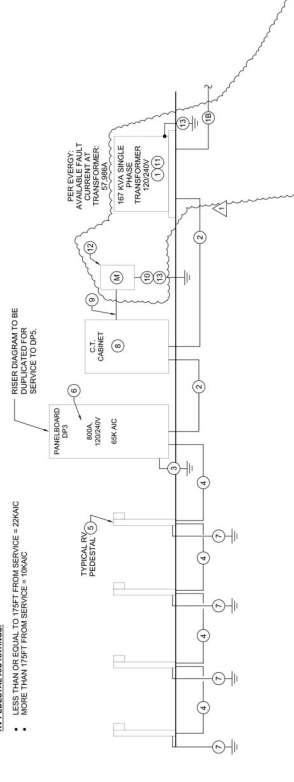
120/240V FEEDER SCHEDULE

Table with columns: SYMBOL, AMPLACITY, NUMBER, FEEDER, SERVICE, REVISION, NOTE, REV. DATE. Lists feeders for BUS, 150% BUS, 3 WIRING IN CABINET, etc.



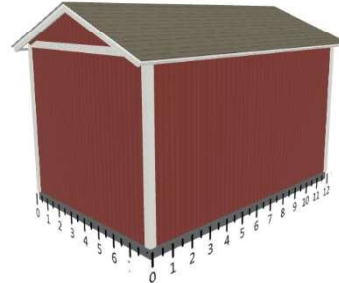
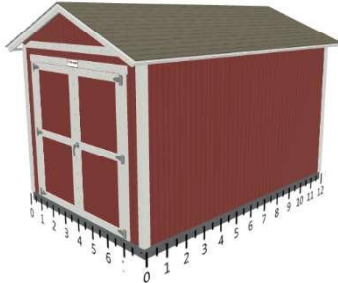
- SUPPORT DETAIL NOTE:
1. PROVIDE 10'-0" SCHEDULE 40 GALVANEZED RIGID STEEL...
2. PROVIDE 3'-0" DIA. GALVANEZED STEEL SUPPORT MEMBER...
3. PROVIDE 3'-0" DIA. GALVANEZED STEEL STRUT FOR EACH...
4. PROVIDE CONCRETE BASE IN 3'-0" DIA. SOUNDTUBE, TOP OF...
CONCRETE BASE TO BE 6" ABOVE FINISHED GRADE.

2 PANELBOARD SUPPORT DETAIL
NO SCALE



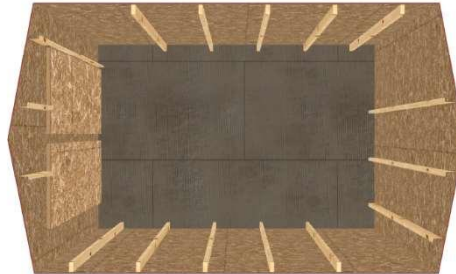
- IV/ADDITIONAL AC RATINGS:
• LESS THAN OR EQUAL TO 175% FROM SERVICE = 20KVA
• MORE THAN 175% FROM SERVICE = 100KVA
- RYSENER DIAGRAM TO BE
DUPLICATED FOR
SERVICE 10 DUP.

1 120/240V TYPICAL ELECTRICAL RISER DIAGRAM (FOR DP3 & DP5)
NO SCALE



Wall D

Wall A



Wall C

Wall B

Base Details/Permit Details

Building Size & Style

Premier Pro Ranch - 8' wide by 12' long

Paint Selection

Base: Brick Dust, Trim: Tundra Frost

Roof Selection

Weathered Wood Dimensional
 Premium Shingle

Drip Edge

White

Is a permit required for this job?

Yes

Who is pulling the permit?

Tuff Shed

Optional Details

Doors

3' x 6'2" Double Door (6')

Walls

281 Sq Ft House Wrap
 281 Sq Ft Vertical Groove Cement Panel
 Siding

Jobsite/Installer Details

Do you plan to insulate this building after Tuff Shed installs it?

Yes

Is there a power outlet within 100 feet of installation location?

Yes

The building location must be level to properly install the building. How level is the install location?

Within 4" of level

Will there be 18" of unobstructed workspace around the perimeter of all four walls?

Yes

Can the installers park their pickup truck & trailer within approximately 200' of your installation site?

Yes

Substrate Shed will be installed on?

Dirt/Gravel

Customer Signature: _____ Date: _____



Shanea Frederick
 16600 Hwy 45 N. Weston Mo. 64098
 Weston MO 64098
 Q-2758307

PPR - 8' X 12'

Prefab / Installer Checklist

Dimensions in inches unless otherwise shown

| Component | Description | Size/Details | QTY | Initial Below | | |
|------------------------|-------------------|-------------------------|------|---------------|-----------------|-----------|
| | | | | Loader | Shop Supervisor | Installer |
| Floor Joist | Steel | 8' | 7 | | | |
| Floor Track | Steel | 12' | 2 | | | |
| Leveling Block | | 2" | 12 | | | |
| Leveling Shim | | | 25 | | | |
| Floor Ply Fulls | Smartfloor | 48 x 96 | 2 | | | |
| Floor Ply Cross Cuts | Smartfloor | 48 x 48 | 2 | | | |
| Walls | Premier Pro Ranch | 8' x 12' | 4 | | | |
| Rafters | Premier Pro Ranch | 5/12 x 8' | 5 | | | |
| Roof Ply Fulls | Silvercrest | 48 x 96 | 2 | | | |
| Roof Ply Cross Cuts | Silvercrest | 48 x 48 | 2 | | | |
| Roof Ply Rips | Silvercrest | 10-1/16 x 48 | 2 | | | |
| Roof Ply Rips | Silvercrest | 10-1/16 x 96 | 2 | | | |
| Doors | Shed Double Door | 72 x 74 | 1 | | | |
| Trim Pack | Premier Pro Ranch | Piece Count | 13 | | | |
| Serial Tag | Screw to Door Top | | 1 | | | |
| Eave Boxes | Premier Pro Ranch | | 4 | | | |
| Drip Edge | White | 10' | 4.75 | | | |
| Synthetic Underlayment | Precut Roll | 48" x 13' - 6" | 3 | | | |
| Shingle (Bundles) | Lifetime | Weathered Wood Lifetime | 4.6 | | | |
| Ridge Cap (Shingles) | 3-Tab | Weathered Gray 3 Tab | 11 | | | |
| Starter Strip | | Shingle Starter Strip | 13 | | | |
| Paint | Base | Brick Dust | 1.25 | | | |
| Paint | Trim | Tundra Frost | 0.5 | | | |

| Screws | QTY | Nails/Staples | QTY | Hardware & Sealant | QTY |
|---------------------------------------|-----|---------------------------------|-----|-----------------------------|-----|
| Steel Floor Frame Screws | 32 | STD Framing Nail (25/STRIP) | 5 | 5 1/2" Shed Door Handle | 1 |
| Base Plate to Floor Screws | 26 | STD Trim/Siding Nail (300/COIL) | 3 | Caulking | 1 |
| Door/Floor Deck Screws (strips of 50) | 2.5 | Staple (85/STRIP) | 3 | Sill Nosing 6' | 1 |
| 2 1/4" Square Dr Hinge Screw | 74 | Roof Nail (120/COIL) | 7 | Spring Bolt 1143ZN | 1 |
| | | | | H2.5 Truss and Rafter Clips | 10 |
| | | | | Tico Nails | 111 |

Special Instructions: None

| Options | Description | QTY | Initial Below | | |
|---------|-------------------------------------|-----|---------------|-----------------|-----------|
| | | | Loader | Shop Supervisor | Installer |
| Walls | House Wrap | 281 | | | |
| Walls | Vertical Groove Cement Panel Siding | 281 | | | |

Tuff Shed employee has verified installer badges prior to loading for departure:

EMPLOYEE signature: _____ Date: _____

Save time, money, and fuel by investing the 10 minutes needed to do this checklist!
 I have checked this load package and I certify that all I have all items required to complete install:



Shanea Frederick
16600 Hwy 45 N. Weston Mo. 64098
Weston MO 64098
Q-2758307

INSTALLER signature: _____ **Date:** _____

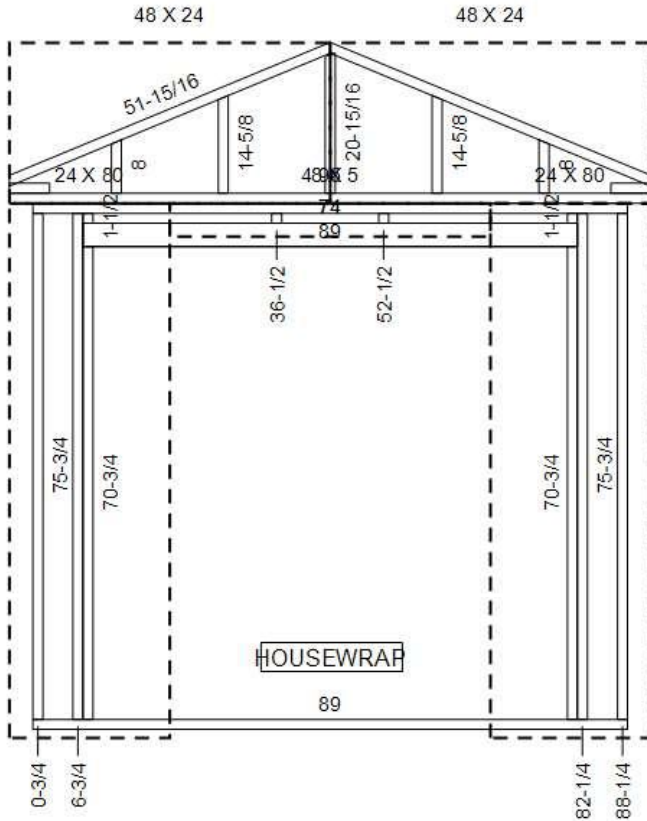


PROPERTY OF:
TUFF SHED[®]
 Storage Buildings & Garages
 COPYRIGHT © 2016 TUFF SHED, INC.
 PROPRIETARY, ALL RIGHTS RESERVED

Premier Pro Ranch
 8' X 12'
 Roof Pitch: 5/12
 Customer: Shanea Frederick

Drawn By: KBMax
 This document was auto generated on:
 Fri Jul 12 2024 16:07:35 GMT+0000
 (Coordinated Universal Time)

GABLE END BLOCK DETAILS
 HEAL CUT: 1"
 ANGLE: 22.5°



Siding Reveal: 1-1/4

WALL A
 DIMENSIONS IN INCHES

Bottom Plate Length: 89

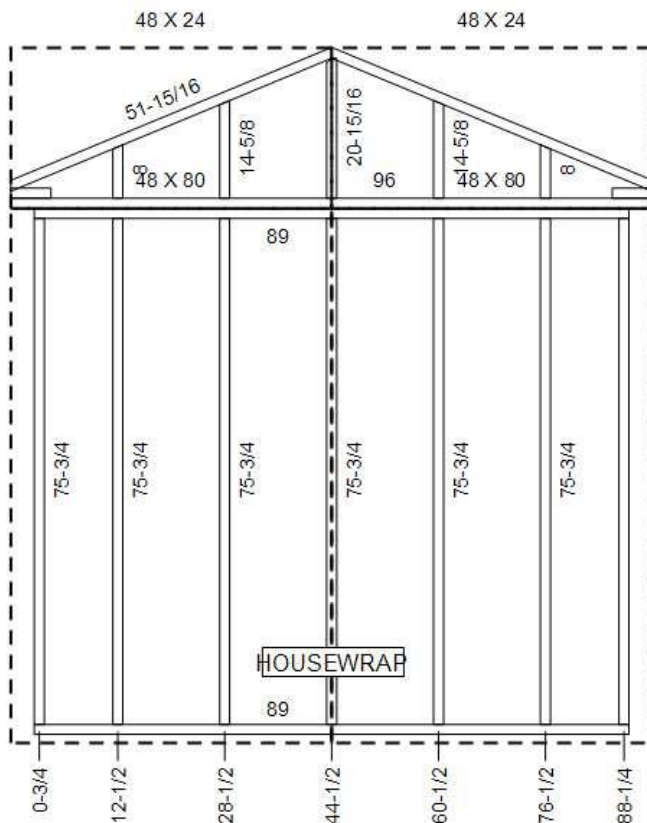
Lumber

| Stock | Cut |
|---------------|--------------------------|
| 2x4 x 8' | (2) 89 X 0° |
| 2x4 x 75 3/4" | (4) 75-3/4 X 0° |
| 2x4 x 75 3/4" | (2) 70-3/4 X 0° |
| 2x4 x 75 3/4" | (2) 74 X 0° |
| 2x4 x 8' | (1) 96 X 0° |
| 2x4 x 63 3/4" | (2) 51-15/16 X 22.5° //b |
| 2x4 x 63 3/4" | (4) 1-1/2 X 0° |
| 2x4 x 63 3/4" | (1) 20-15/16 X 22.5° ^ |
| 2x4 x 63 3/4" | (2) 14-5/8 X 22.5° /b |
| 2x4 x 63 3/4" | (2) 8 X 22.5° /b |
| 2x4 x 63 3/4" | (2) 6 X 0° |

Siding

| Stock | Cut |
|----------------------------|----------------|
| 4'X8'X5/16" HARDI-PANEL | (2) 80 X 24 |
| 4'X8'X5/16" HARDI-PANEL | (1) 5 X 48 |
| 4'X8'X5/16" HARDI-PANEL | (2) 24 X 48 |
| 7/16" OSB 4X8 | (2) 80 X 24 |
| 7/16" OSB 4X8 | (1) 5 X 48 |
| 7/16" OSB 4X8 | (2) 24 X 48 |
| 7/16" OSB 4X8 | (1) 72 X 3-1/4 |

GABLE END BLOCK DETAILS
 HEAL CUT: 1"
 ANGLE: 22.5°



Siding Reveal: 1-1/4

WALL C
 DIMENSIONS IN INCHES

Bottom Plate Length: 89

Lumber

| Stock | Cut |
|---------------|--------------------------|
| 2x4 x 8' | (2) 89 X 0° |
| 2x4 x 75 3/4" | (7) 75-3/4 X 0° |
| 2x4 x 8' | (1) 96 X 0° |
| 2x4 x 63 3/4" | (2) 51-15/16 X 22.5° //b |
| 2x4 x 63 3/4" | (1) 20-15/16 X 22.5° ^ |
| 2x4 x 63 3/4" | (2) 14-5/8 X 22.5° /b |
| 2x4 x 63 3/4" | (2) 8 X 22.5° /b |
| 2x4 x 63 3/4" | (2) 6 X 0° |

Siding

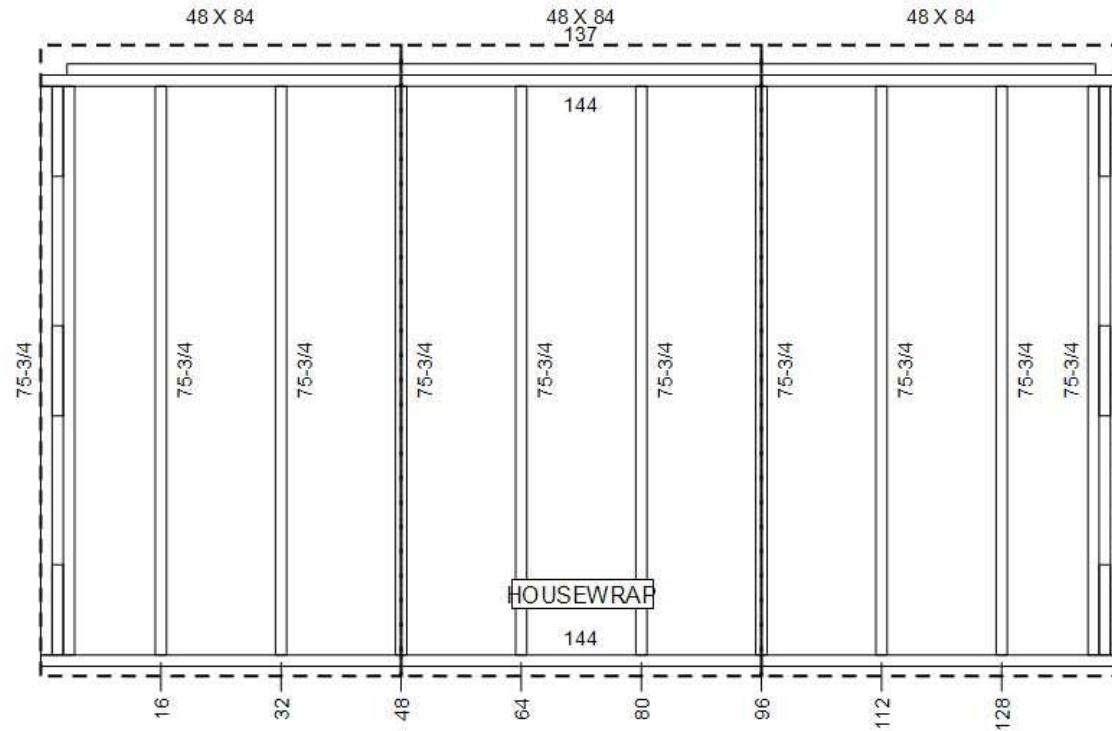
| Stock | Cut |
|----------------------------|-------------|
| 4'X8'X5/16" HARDI-PANEL | (2) 80 X 48 |
| 4'X8'X5/16" HARDI-PANEL | (2) 24 X 48 |
| 7/16" OSB 4X8 | (2) 80 X 48 |
| 7/16" OSB 4X8 | (2) 24 X 48 |



PROPERTY OF:
TUFF SHED®
 Storage Buildings & Garages
 COPYRIGHT © 2016 TUFF SHED, INC.
 PROPRIETARY, ALL RIGHTS RESERVED

Premier Pro Ranch
 8' X 12'
 Roof Pitch: 5/12
 Customer: Shanea Frederick

Drawn By: KBMax
 This document was auto generated on:
 Fri Jul 12 2024 16:07:36 GMT+0000
 (Coordinated Universal Time)



Siding Reveal: 1-1/4

WALL B
 DIMENSIONS IN INCHES

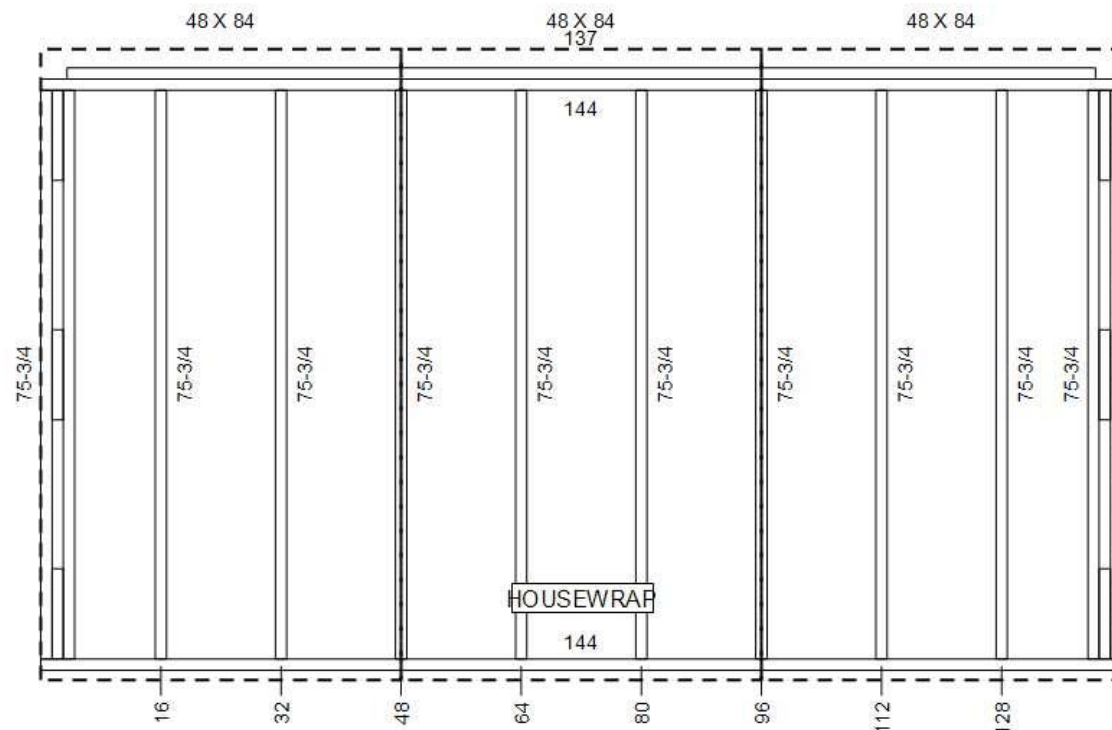
Bottom Plate Length: 144

Lumber

| Stock | Cut |
|---------------|------------------|
| 2x4 x 12' | (2) 144 X 0° |
| 2x4 x 12' | (1) 137 X 0° |
| 2x4 x 75 3/4" | (12) 75-3/4 X 0° |
| 2x4 x 8' | (6) 12 X 0° |

Siding

| Stock | Cut |
|-------------------------|-------------|
| 4'X8'X5/16" HARDI-PANEL | (3) 84 X 48 |
| 7/16" OSB 4X8 | (3) 84 X 48 |



Siding Reveal: 1-1/4

WALL D
 DIMENSIONS IN INCHES

Bottom Plate Length: 144

Lumber

| Stock | Cut |
|---------------|------------------|
| 2x4 x 12' | (2) 144 X 0° |
| 2x4 x 12' | (1) 137 X 0° |
| 2x4 x 75 3/4" | (12) 75-3/4 X 0° |
| 2x4 x 8' | (6) 12 X 0° |

Siding

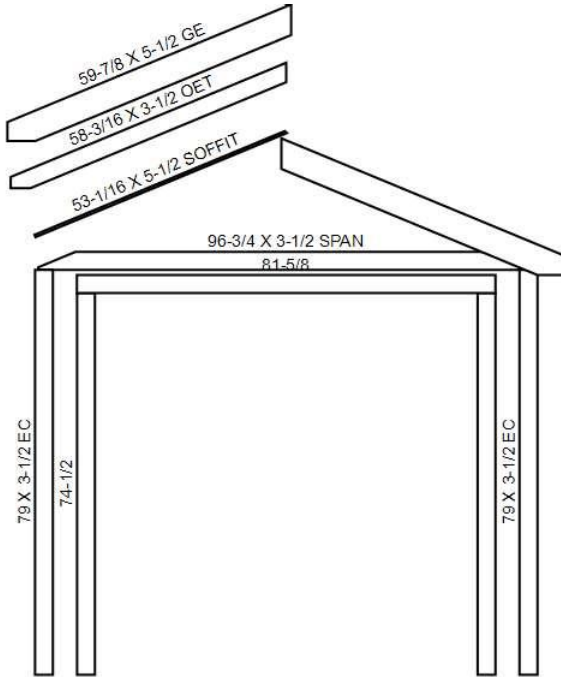
| Stock | Cut |
|-------------------------|-------------|
| 4'X8'X5/16" HARDI-PANEL | (3) 84 X 48 |
| 7/16" OSB 4X8 | (3) 84 X 48 |



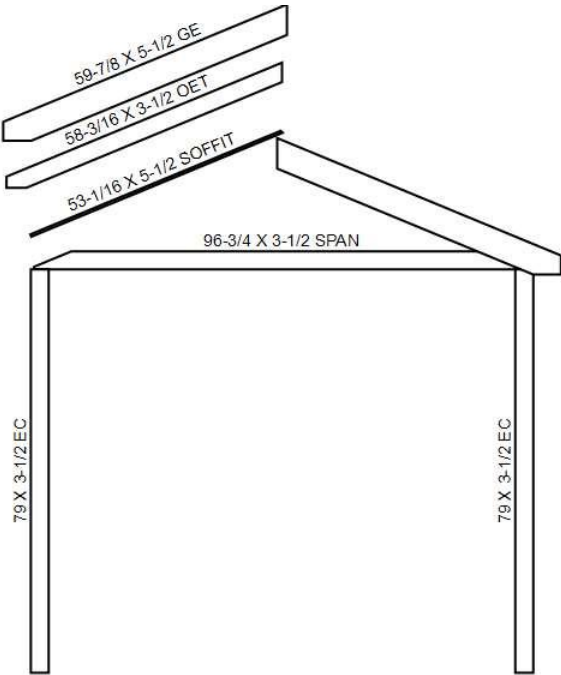
PROPERTY OF:
TUFF SHED®
 Storage Buildings & Garages
 COPYRIGHT © 2016 TUFF SHED, INC.
 PROPRIETARY, ALL RIGHTS RESERVED

Premier Pro Ranch
 8' X 12'
 Roof Pitch: 5/12
 Customer: Shanea Frederick

Drawn By: KBMax
 This document was auto generated on:
 Fri Jul 12 2024 16:07:40 GMT+0000
 (Coordinated Universal Time)



Wall A

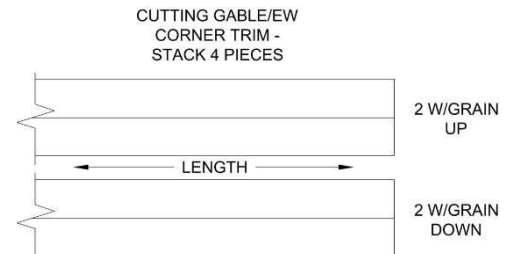
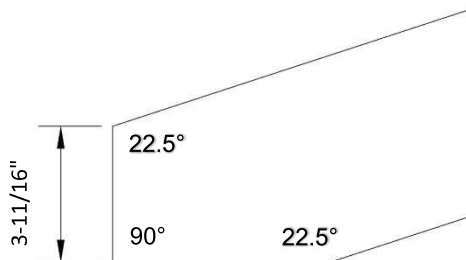
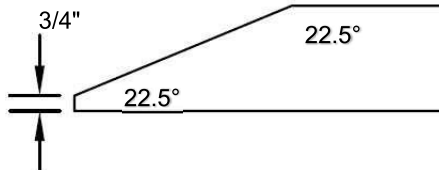


Wall C

WALLS A & C
 DIMENSIONS IN INCHES

Paint Color: Tundra Frost

| Stock | Lumber | Cut |
|---------------|------------------------|-----|
| 4" smart-trim | (4) 79 X 0° | |
| 4" smart-trim | (2) 96-3/4 X 67.5° | |
| 4" smart-trim | (2) 74-1/2 X 0° | |
| 4" smart-trim | (1) 81-5/8 X 0° | |
| 2x4 x 63 3/4" | (4) 58-3/16 X 22.5° /m | |
| 6" smart-trim | (4) 53-1/16 X 22.5° /b | |
| 6" smart-trim | (4) 59-7/8 X 22.5° /m | |





PROPERTY OF:
TUFF SHED®
 Storage Buildings & Garages
 COPYRIGHT © 2016 TUFF SHED, INC.
 PROPRIETARY, ALL RIGHTS RESERVED

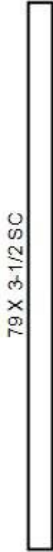
Premier Pro Ranch
 8' X 12'
 Roof Pitch: 5/12
 Customer: Shanea Frederick

Drawn By: KBMax
 This document was auto generated on:
 Fri Jul 12 2024 16:07:42 GMT+0000
 (Coordinated Universal Time)

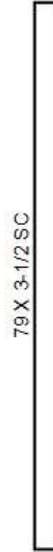
157 X 3-1/2 FASCIA



157 X 5-1/2 SOFFIT



79 X 3-1/2 SC



79 X 3-1/2 SC

Wall B

WALLS B & D
 DIMENSIONS IN INCHES

Paint Color:

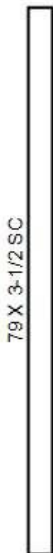
Lumber

| <u>Stock</u> | <u>Cut</u> |
|-----------------------------------|----------------------|
| 4" smart-trim | (4) 79 X 0° |
| 4" smart-trim | (2) 157 X 0° |
| No-groove smartside 4 x 74" | (2) 157 X 5-1/2 X 0° |

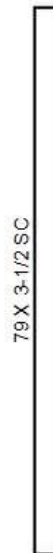
157 X 3-1/2 FASCIA



157 X 5-1/2 SOFFIT



79 X 3-1/2 SC



79 X 3-1/2 SC

Wall D



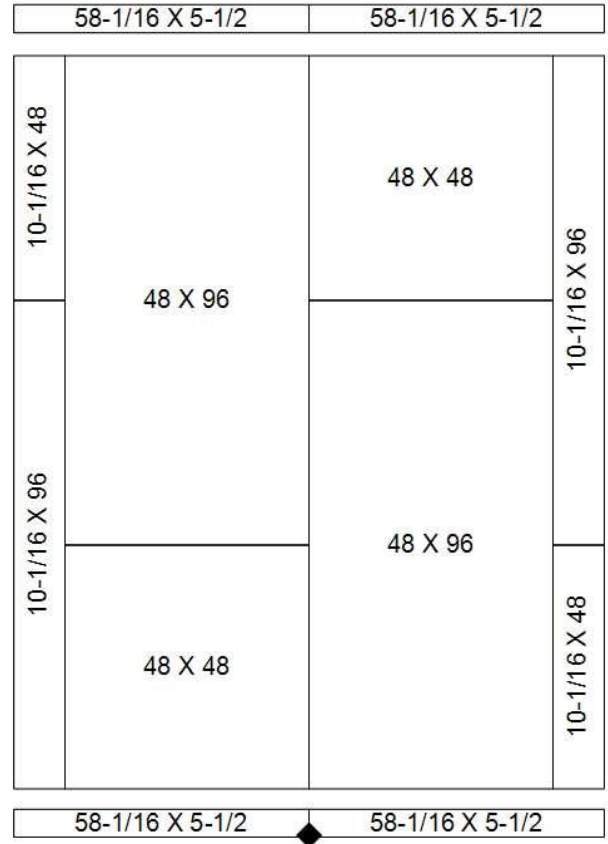
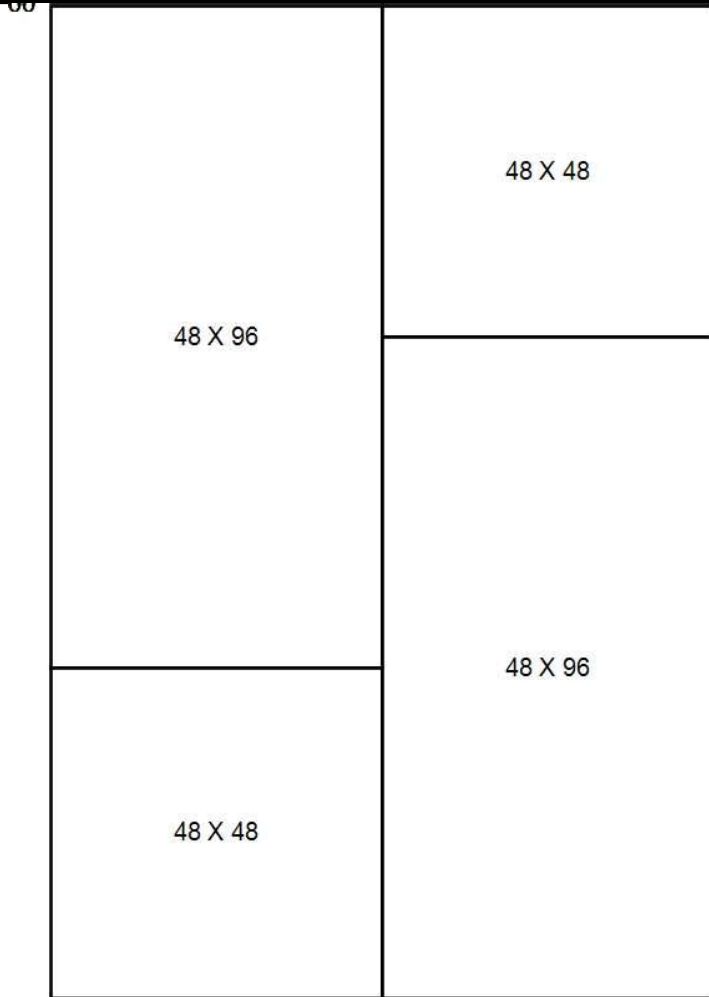
PROPERTY OF:
TUFF SHED®
 Storage Buildings & Garages
 COPYRIGHT © 2016 TUFF SHED, INC.
 PROPRIETARY, ALL RIGHTS RESERVED

Premier Pro Ranch
 8' X 12'
 Roof Pitch: 5/12
 Customer: Shanea Frederick

Drawn By: KBMax
 This document was
 auto generated on:
 Fri Jul 12 2024
 16:07:39 GMT+0000
 (Coordinated Universal
 Time)

Floor: Smartfloor 8 X 12
 Joist Matl: Steel
 Joist Spacing (in): 24

Roof: Silvercrest
 Area (sq ft): 125.8
 Truss Spacing (in): 24



OPTIONS

SHELVING = NONE

LOFT = N/A

WORKBENCH = NONE

PEG BOARD = NONE

Cut Size

Qty