

ADDENDUM NO. 1

TO: PLANS AND SPECIFICATIONS FOR STATE OF MISSOURI

**Sewer and Water Line Improvements
Weston Bend State Park
Weston, Missouri
Project No. X2322-03**

Bid Opening Date: 1:30 PM, Tuesday, October 15, 2024 (Not Changed)

Bidders are hereby informed that the construction Plans and/or Specifications are modified as follows:

SPECIFICATION CHANGES:

1. Section 330110.58 – Disinfection of Water Utility Piping Systems
 - a. REVISE Paragraphs 1.03-A and 1.03-B as follows:
 - A. AWWA B300 - Hypochlorites; 2024.
 - B. AWWA B301 - Liquid Chlorine; 2024.
2. Section 331416 – Site Water Utility Distribution Piping
 - a. ADD Paragraph 1.05-C as follows:
 - C. Provide five-year manufacturer warranty for materials.
 - b. REVISE Paragraph 2.02-B as follows:
 - B. Gate Valves Up To 4 Inches (100 mm):

DRAWING CHANGES:

1. Sheet C-104
 - a. Add designation for septic and pump tanks.
 - b. Change MicroFAST 3.0 to MicroFAST 9.0 or equal AND increase size of tank S2 to 9,000 gal.
 - c. Revise note for first tank (S1): "Replace existing septic tank w/ 4,000 gal. Septic Tank"
 - d. Remove Manhole A-2 and Host site connection. Replace with grinder pump and 1000 gal. pump tank. Add service line to Septic tank S-1
 - e. Add enlargement 2 – Blow up of Grinder Pump servicing camp host site.
 - f. Add pump curve for effluent pump A-1 (pump to lateral field)
 - g. Add 535 LF of 1.25" HDPE line from camp host site to septic tank S1 (First septic tank).
 - h. Add Lateral Field Detail to sheet.
 - i. Revise pump sizing calculation requirements. Add Pump Sizing calculations for Pump B-1.
 - j. Change profile effluent pipe size from 1" HDPE to 1.25" HDPE.
 - k. Add note for secondary power connection: "A secondary power connection with power transfer switch for emergency power outages shall be provide for the A-1 and S-2 systems. Secondary connection is anticipated small portable gas/diesel generator. Generator shall provide power for entire system: Pumps, blowers, alarms, and another apparatus. Anticipated generator size is 2.5KW."
 - l. See attached revised sheet for revisions.
2. Sheet C-105
 - a. ADD the following Note: "Install gate valves on main service line every 1,00 feet and at Tee connections."

3. Sheet C-106
 - a. Add Air Release Valve to sheet.
 - b. Change EOL to connect into existing 2" line servicing campground at STA. 24+27.72
 - c. See attached revised sheet for revisions.
4. Sheet C-107
 - a. Remove manhole and air release valve details.
 - b. Add Grinder Pump detail.
 - c. Add SaniTEE detail.
 - d. Add MicroFAST 9.0 detail.
 - e. Add 4,000 gal Septic Tank detail.
 - f. See attached revised sheet for revisions.

GENERAL COMMENTS:

1. The Pre-Bid Meeting was held on October 2, 2024, at 10:00 AM. The Pre-Bid Meeting sign-in sheet is attached.
2. Please contact Mandy Roberson, Contract Specialist, at 573-522-0074 or Mandy.Roberson@oa.mo.gov for questions about bidding procedures, MBE/WBE/SDVE Goals, and other submittal requirements.
3. The deadline for technical questions is October 7, 2024, at 12:00 PM.
4. Changes to, or clarification of, the bid documents are only made as issued in the addenda.
5. All correspondence with respect to this project must include the State of Missouri project number as indicated above.
6. Current Plan holders list available online at <https://www.oafmdcplanroom.com/projects/2612/plan-holders/x2322-03-sewer-water-line-improvements-weston-bend-state-park>
7. Prospective Bidders contact American Document Solutions, 1400 Forum Blvd Suite 1C, Columbia MO 65201, 573-446-7768 to order official plans and specifications.
8. **All bids shall be submitted on the bid form without additional terms and conditions, modifications, or stipulations. Each space on the bid form shall be properly filled. Failure to do so will result in rejection of the bid.**
9. **MBE/WBE/SDVE participation requirements can be found in DIVISION 00. The MBE/WBE/SDVE participation goals are 10%/10%/3%, respectively. Only certified firms as of the bid opening date can be used to satisfy the MBE/WBE/SDVE participation goals for this project. If a bidder is unable to meet a participation goal, a Good Faith Effort Determination Form must be completed. Failure to complete this process will result in rejection of the bid.**

ATTACHMENTS:

1. Pre-Bid Meeting Sign-In Sheet
2. Sheets C-104, C-106, C-107

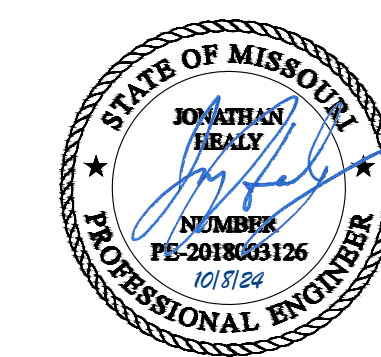
October 8, 2024

END OF ADDENDUM NO. 1

Sewer and Water Line Improvements
 Weston Bend State Park
 Weston, MO

Project No. X2322-03
 October 2, 2024

Name & Title	Company Name	Phone	E-Mail Address
Eric Hibdon	OA FMDC	573-522-0322	Eric.Hibdon@oa.mo.gov
Shanea Frederick	Weston Bend	cell 913-683-8992	shanea.frederick@dnr.mo.gov
Matt Carletti	Weston Bend/NPD	816-640-5443	matt.carletti@dnr.mo.gov
Philp BIRVEY	Brown Root	816.814.9320	Philp.Birvey@BrownRoot.com
Jacob Schwenter		573-999-6638	JSchwenter@GAAteam.com
Jim Kunce	Mo State Parks/DSP	816-308-1002	jim.kunce@dnr.mo.gov



Know what's below.
Call before you dig.
Missouri One Call System
1-800-344-7483 (DIG-RITE) or 811



9801 Renner Blvd., Ste. 300
Lenexa, KS 66219
913.492.0400
gbateam.com

PROJECT OWNER:
JIM KUNCE

OFFICE OF ADMINISTRATION
DIVISION OF FACILITIES
MANAGEMENT,
DESIGN AND CONSTRUCTION

Department of Natural
Resources Missouri
State Parks

Water and Sewer
System Improvements

Weston Bend State Park
16600 Hwy 45 North
Weston, MO 64098

PROJECT # X232203
SITE # 5118
FACILITY # 7815118029

REVISION: Add. 1
DATE: 10.8.24
REVISION:
DATE:
REVISION:
DATE:
ISSUE DATE: August 9, 2024

CAD DWG FILE:
DRAWN BY: DRV/JS
CHECKED BY:
DESIGNED BY: JRH

SHEET TITLE:
Sewer Plan and Profile

SHEET NUMBER:

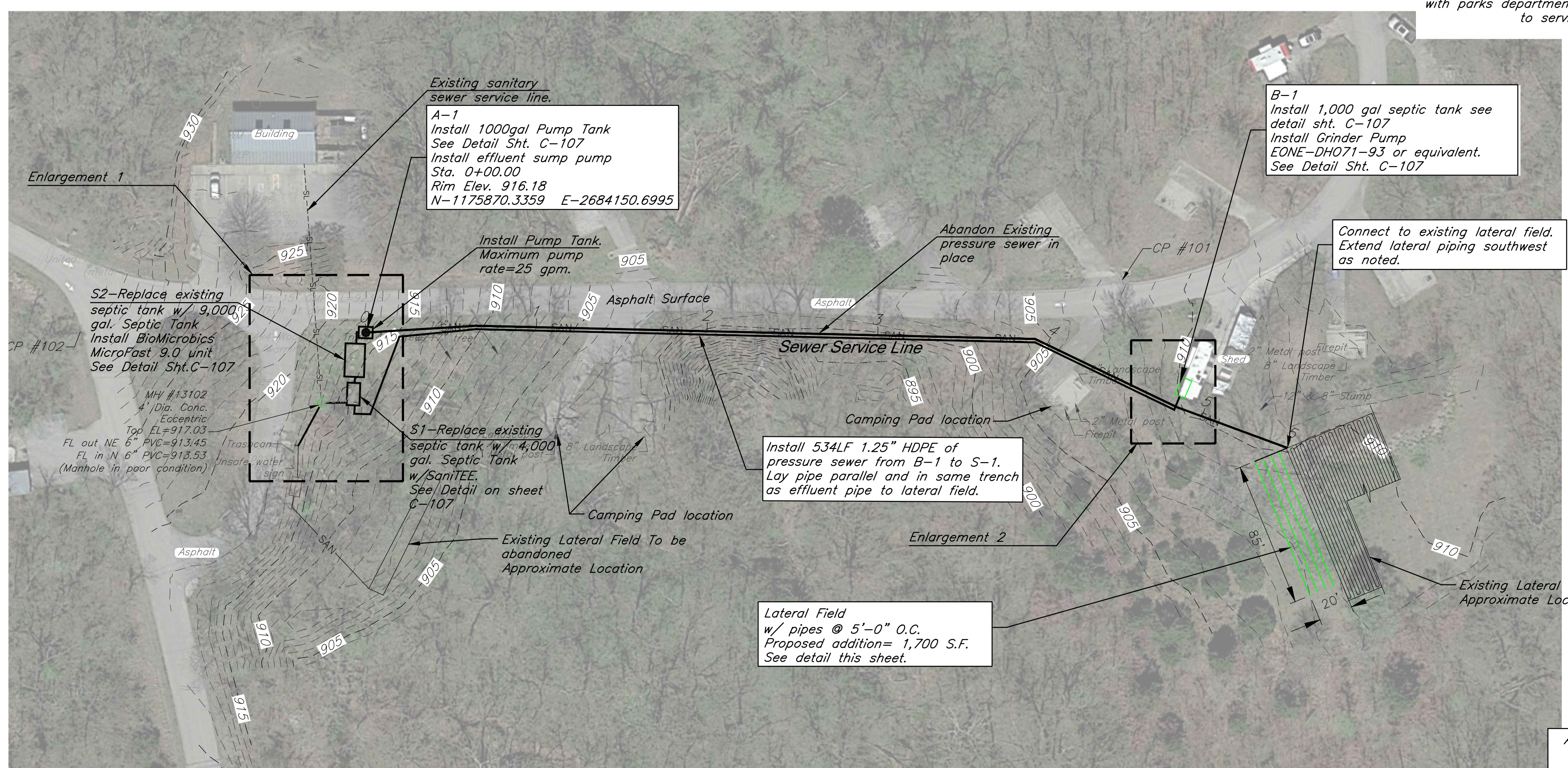
C-104

SHEET 4 OF 7
MAY 1, 2024

Sanitary Sewer Note
Contractor to minimize sanitary sewer service impacts and shall coordinate with parks department any disruptions to service.

Construction Note
Submit a closure plan to the MDNR Kansas City Regional Office prior to removing the existing treatment structures.

"CAUTION"
Many park utilities located on site. It is the contractors responsibility to locate utilities prior to construction.



- A-1 Pump Sizing**
- Static Head = -5 FT
 - Friction Loss = 553.3 FT of 1.25" HDPE at 25 gpm = 177.5 FT
Total = 178 FT
 - Total Dynamic Head = -5 + 178 = 173 FT
 - Pump Requirements: 25 gpm and 173 FT TDH

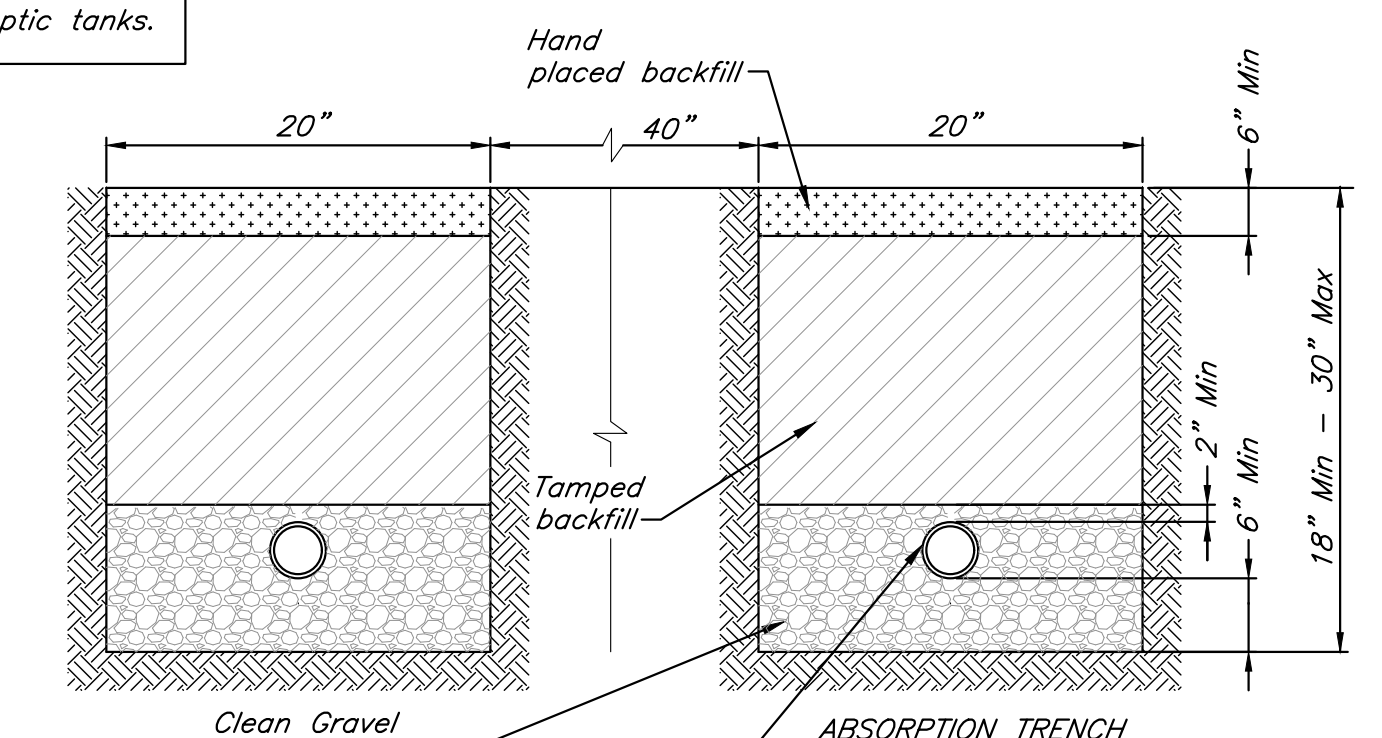
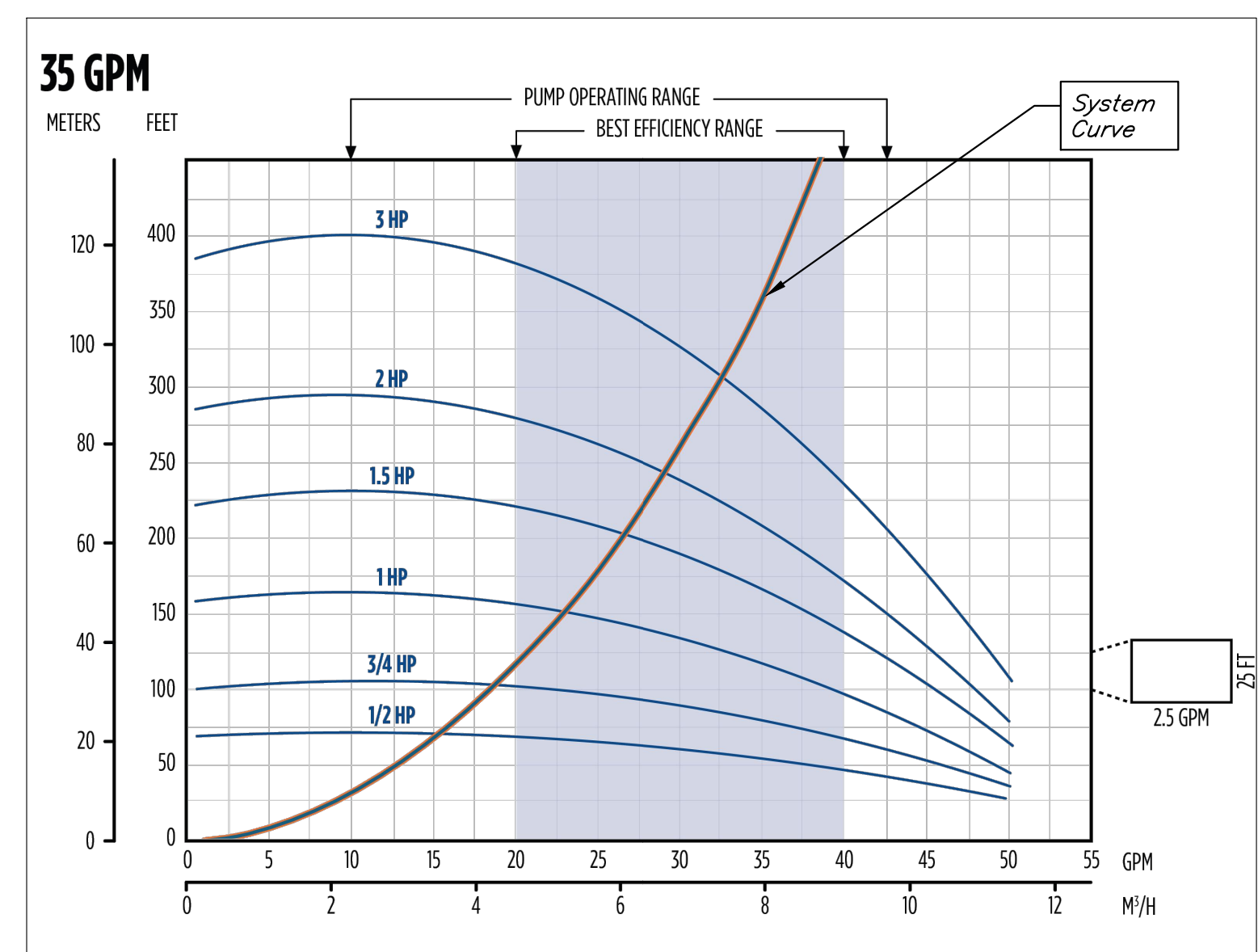
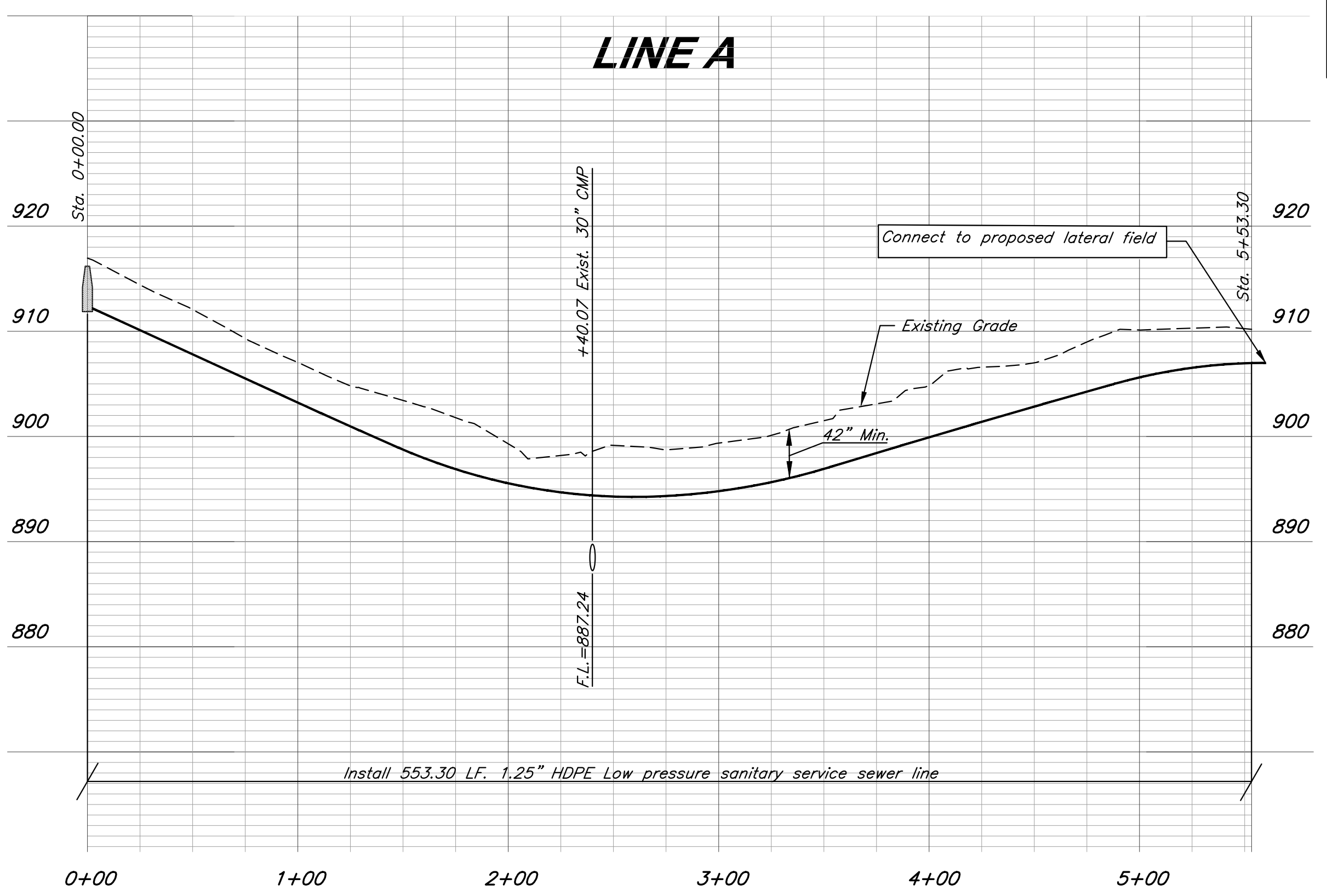
- B-1 Pump Sizing**
- Static Head = 5 FT
 - Friction Loss = 535 FT of 1.25" HDPE at 13 gpm = 47.6 FT
Total = 48 FT
 - Total Dynamic Head = 5 + 47 = 53 FT
 - Pump Requirements: 13 gpm and 53 FT TDH

A secondary power connection with power transfer switch for emergency power outages shall be provide for the A-1 and S-2 systems. Secondary connection is anticipated small portable gas/diesel generator. Generator shall provide power for entire system: Pumps, blowers, alarms, and another apparatus. Anticipated generator size is 2.5KW

- REQUIREMENTS**
- Minimum area of 1,700 ft².
 - 340 LF of dispersal tubing placed 5 ft. O.C.
 - 4 Lengths at 85'.
 - Dispersal tubing shall be installed at 24" below finished grade. See Detail this sheet.
 - Contractor to pump out and remove existing septic tanks.

Effluent Pumping:
A-1 Pump to utilize a 1/8" no vault filter/strainer integral with floats, submersible pump rated at (30) gpm. 1 Hp Thermoplastic pump 230V. Float controls will be to start the pump and stop the pump based on and off float tips. The High tide telemetry to record (Blower on, Pump run, and HWA.)

SEWER SERVICE LINE



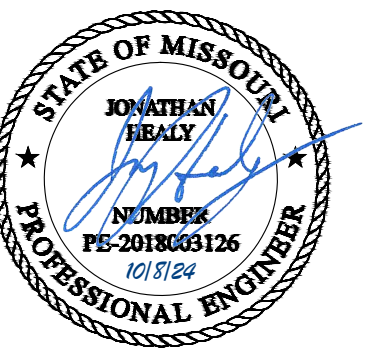
- Lateral Field Notes:**
- Granular fill shall be 1 1/2" - 3" clean rock, placed in 6" lifts and compacted by slicing with a shovel.
 - Tamped fill shall be finely divided, job excavated material free of debris, organic material, and stones, and compacted to 95% standard density.
 - Hand placed fill shall be finely divided material, free of debris and stones, and compacted to 95% standard density.
 - Each absorption trench system shall have a minimum of two (2) trenches with no one trench longer than one hundred feet (100') unless approved by the administrative authority on a case-by-case basis. The absorption trenches shall be located not less than three (3) times the trench width on centers with a minimum spacing of five feet (5') on centers.
 - Gravity-fed absorption field distribution lines shall be at least four inches (4") in diameter. Perforated distribution line shall have holes at least one-half inch (1/2") and no more than three-fourths inch (3/4") in diameter.
 - Longitudinal slope of the pipe system shall not exceed one quarter inch (1/4") in ten feet (10'), ends of line at equal elevations shall be connected, otherwise capped and plugged.
 - Contractor shall refer to MODNR 19 CSR 20-3.060 (5) for trench and field construction.



Know what's below.
Call before you dig.

Missouri One Call System
1-800-344-7483 (DIG-RITE) or 811

STATE OF MISSOURI
MICHAEL L. PARSON,
GOVERNOR



9801 Renner Blvd., Ste. 300
Lenexa, KS 66219
913.492.0400
gbateam.com

PROJECT OWNER:
JIM KUNCE

OFFICE OF ADMINISTRATION
DIVISION OF FACILITIES
MANAGEMENT,
DESIGN AND CONSTRUCTION

Department of Natural
Resources Missouri
State Parks

Water and Sewer
System Improvements

Weston Bend State Park
16600 Hwy 45 North
Weston, MO 64098

PROJECT # X232203
SITE # 5118
FACILITY # 7815118029

REVISION: Add. 1
DATE: 10.8.24
REVISION: _____
DATE: _____
REVISION: _____
DATE: _____
ISSUE DATE: August 9, 2024

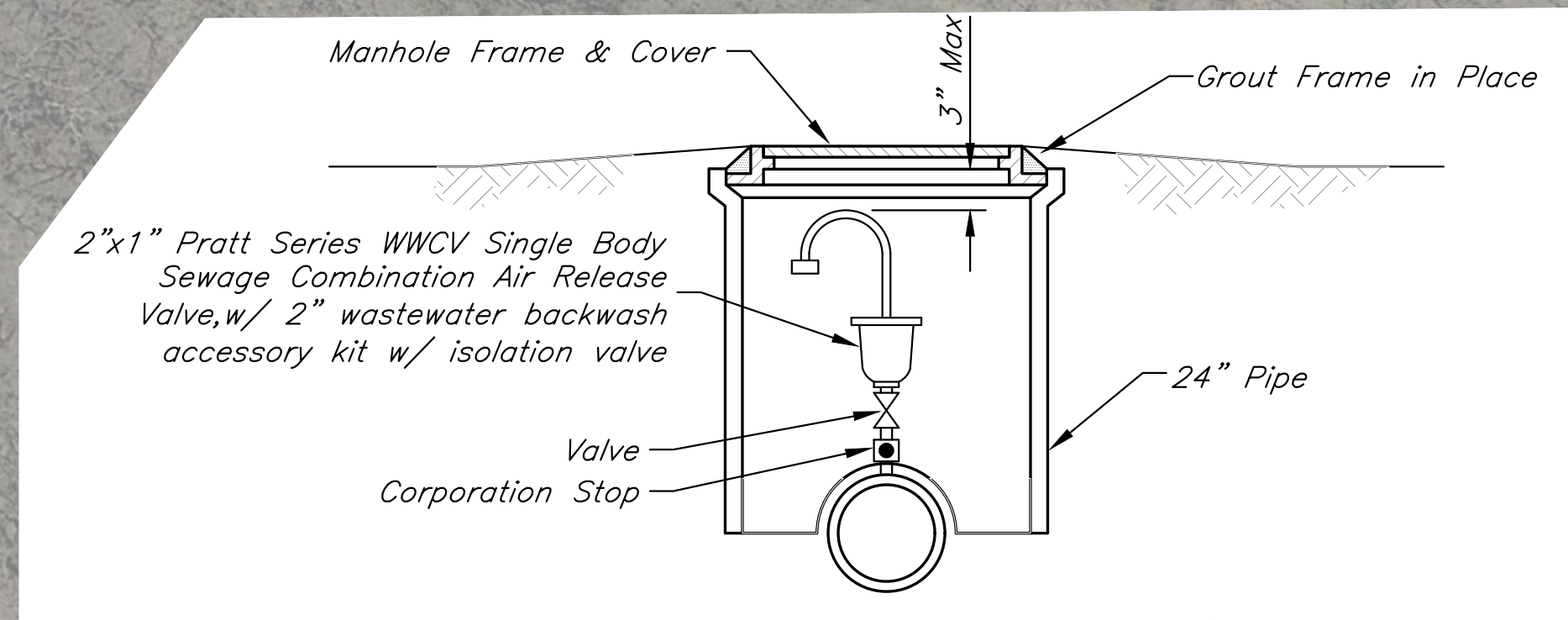
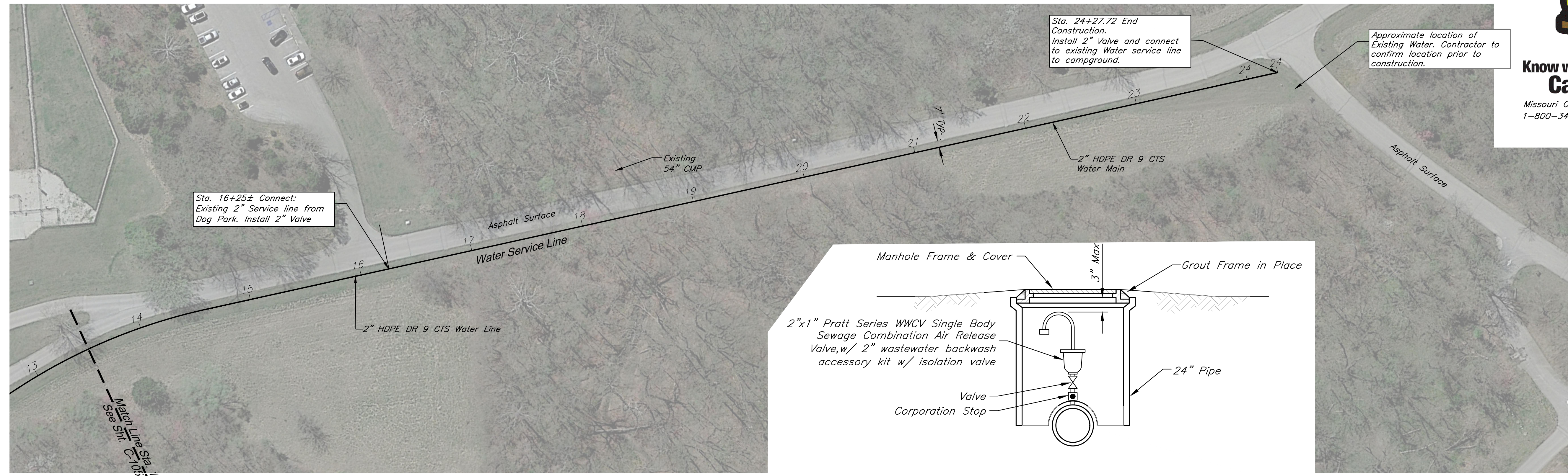
CAD DWG FILE: _____
DRAWN BY: DRV/JS
CHECKED BY: _____
DESIGNED BY: JRH

SHEET TITLE:
Water Service Plan and
Profile

SHEET NUMBER:

C-106

SHEET 6 OF 7
MAY 1, 2024



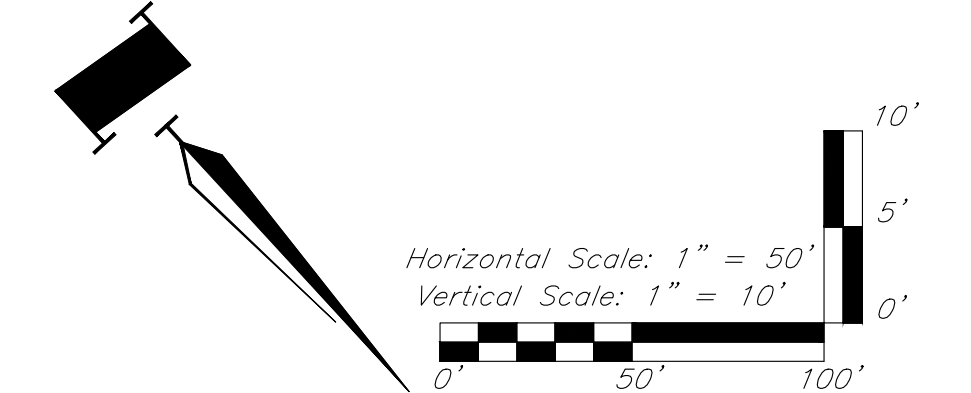
AIR RELEASE VALVE

No Scale

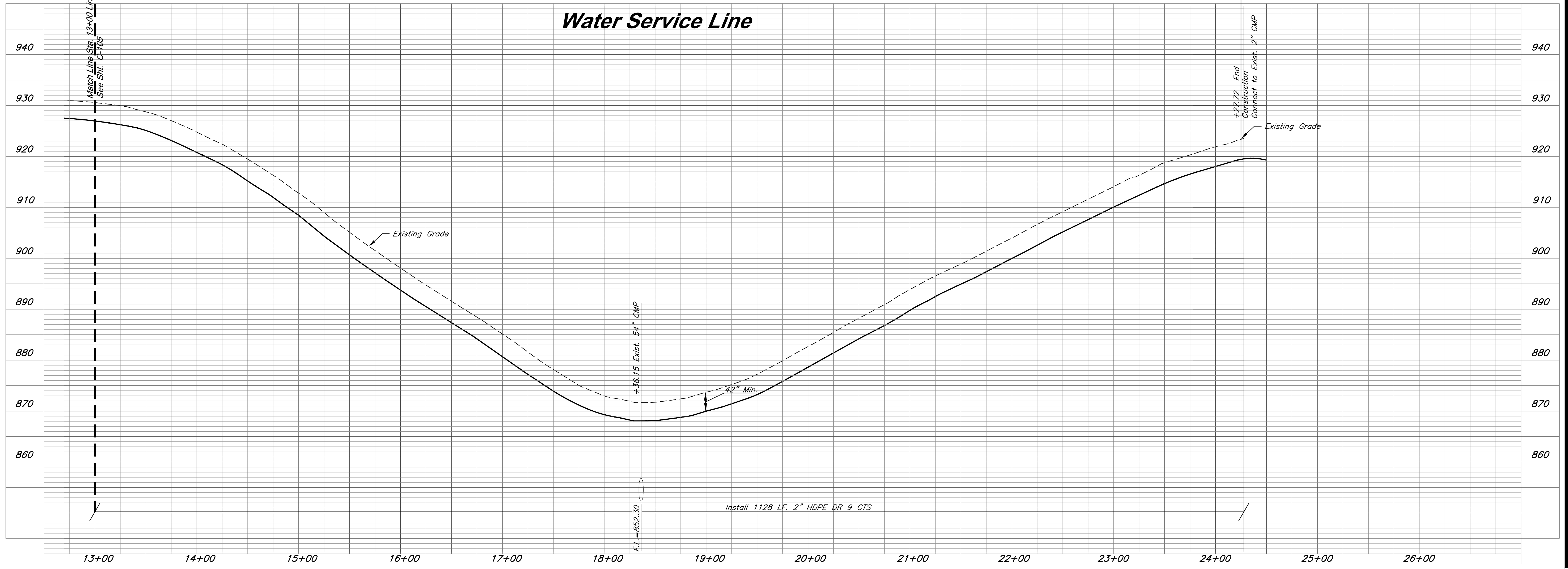
Notes:

- 1. All nipples and valves between pipe and air valve shall be nonferrous.
- 2. If noted on plans, a bolt down cover with gasket shall be installed.

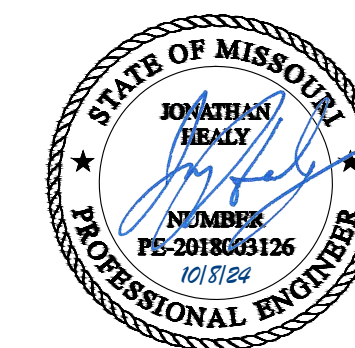
"Caution" Many Park Utilities on site contractor is responsible for locating utilities prior to construction



Water Service Line



Install 1128 LF. 2" HDPE DR 9 CTS



9801 Renner Blvd., Ste. 300
Lenexa, KS 66219
913.492.0400
gbatem.com

PROJECT OWNER:
JIM KUNCE

OFFICE OF ADMINISTRATION
DIVISION OF FACILITIES
MANAGEMENT,
DESIGN AND CONSTRUCTION

Department of Natural
Resources Missouri
State Parks

Water and Sewer
System Improvements

Weston Bend State Park
16600 Hwy 45 North
Weston, MO 64098

PROJECT # X232203
SITE # 5118
FACILITY # 7815118029

REVISION: Add. 1
DATE: 10.8.24
REVISION:
DATE:
REVISION:
DATE:
ISSUE DATE: August 9, 2024

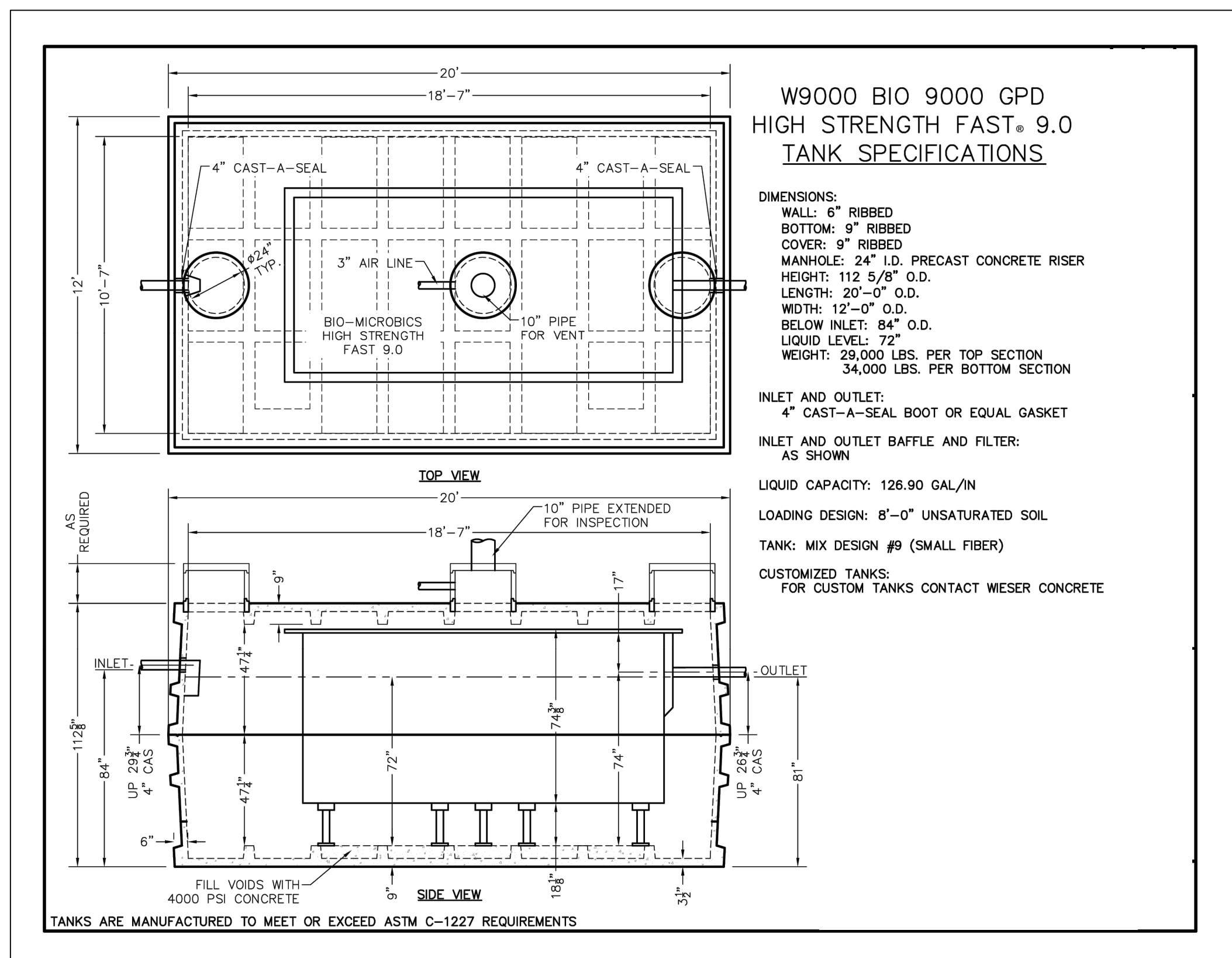
CAD DWG FILE:
DRAWN BY: DRV/JS
CHECKED BY:
DESIGNED BY: JRH

SHEET TITLE:
Detail Sheet

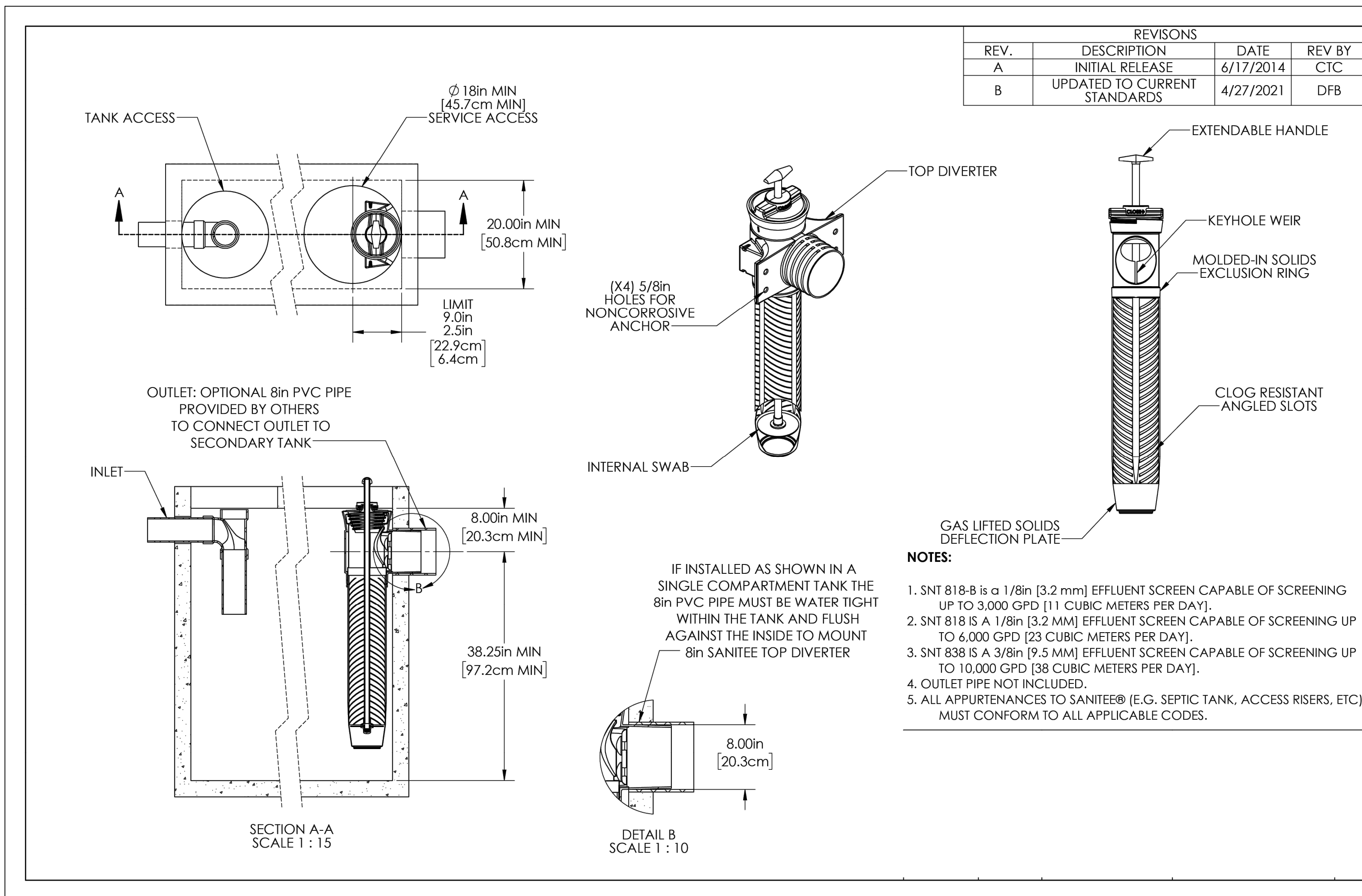
SHEET NUMBER:

C-107

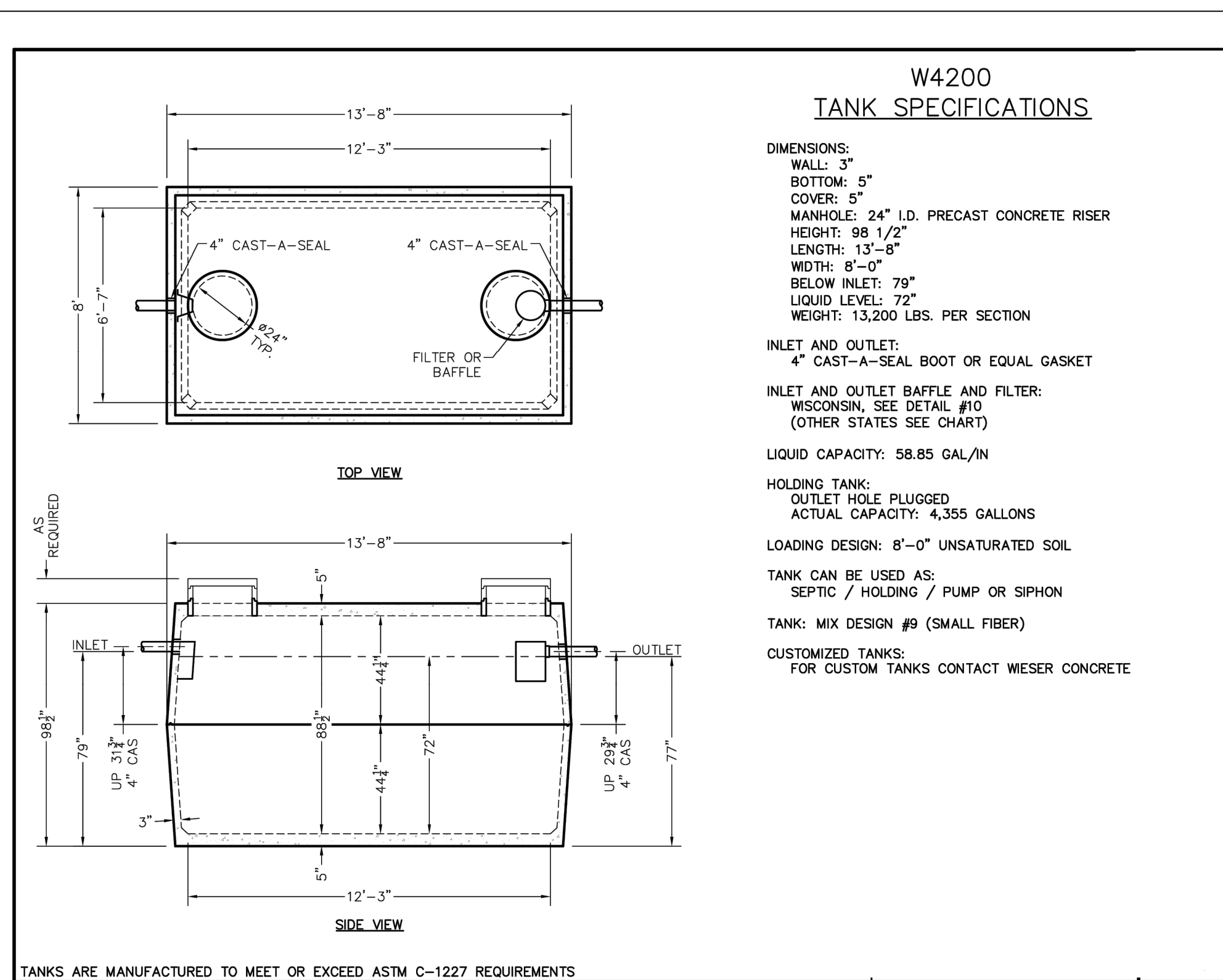
SHEET 7 OF 7
MAY 1, 2024



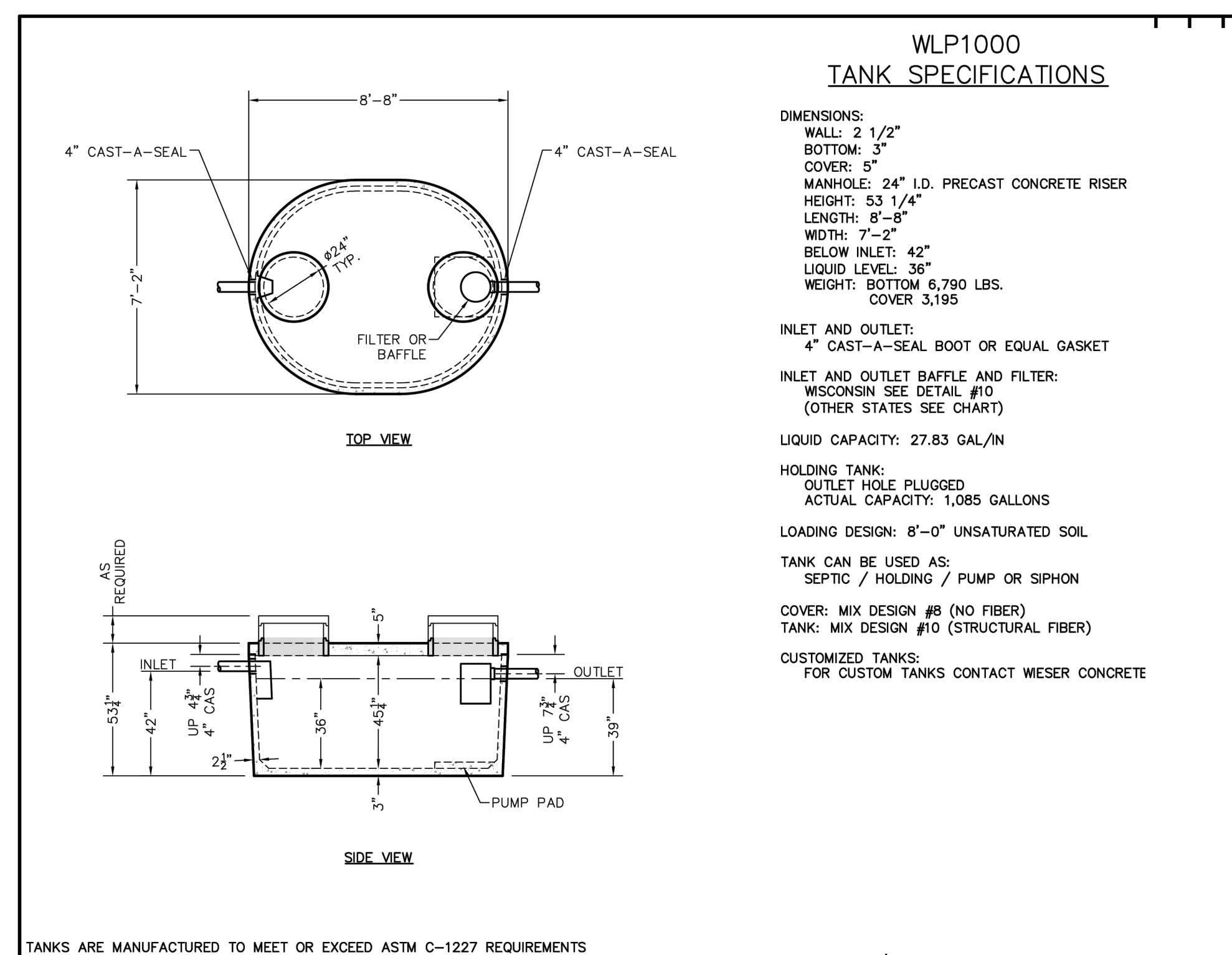
MICROFAST 9.0 TANK DETAIL
No Scale



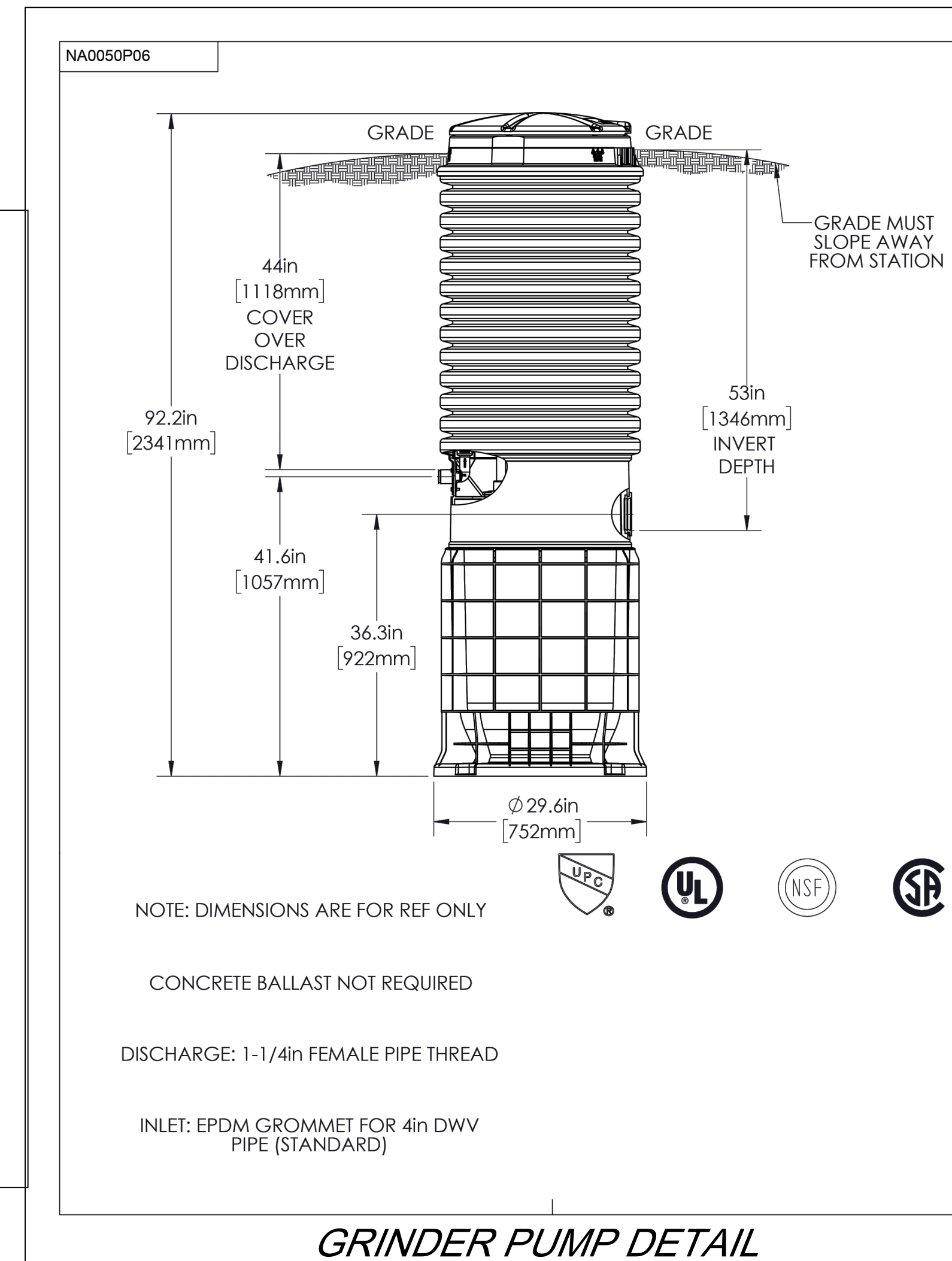
SANITEE DETAIL
No Scale



SEPTIC TANK DETAIL
No Scale



PUMP TANK DETAIL
No Scale



GRINDER PUMP DETAIL