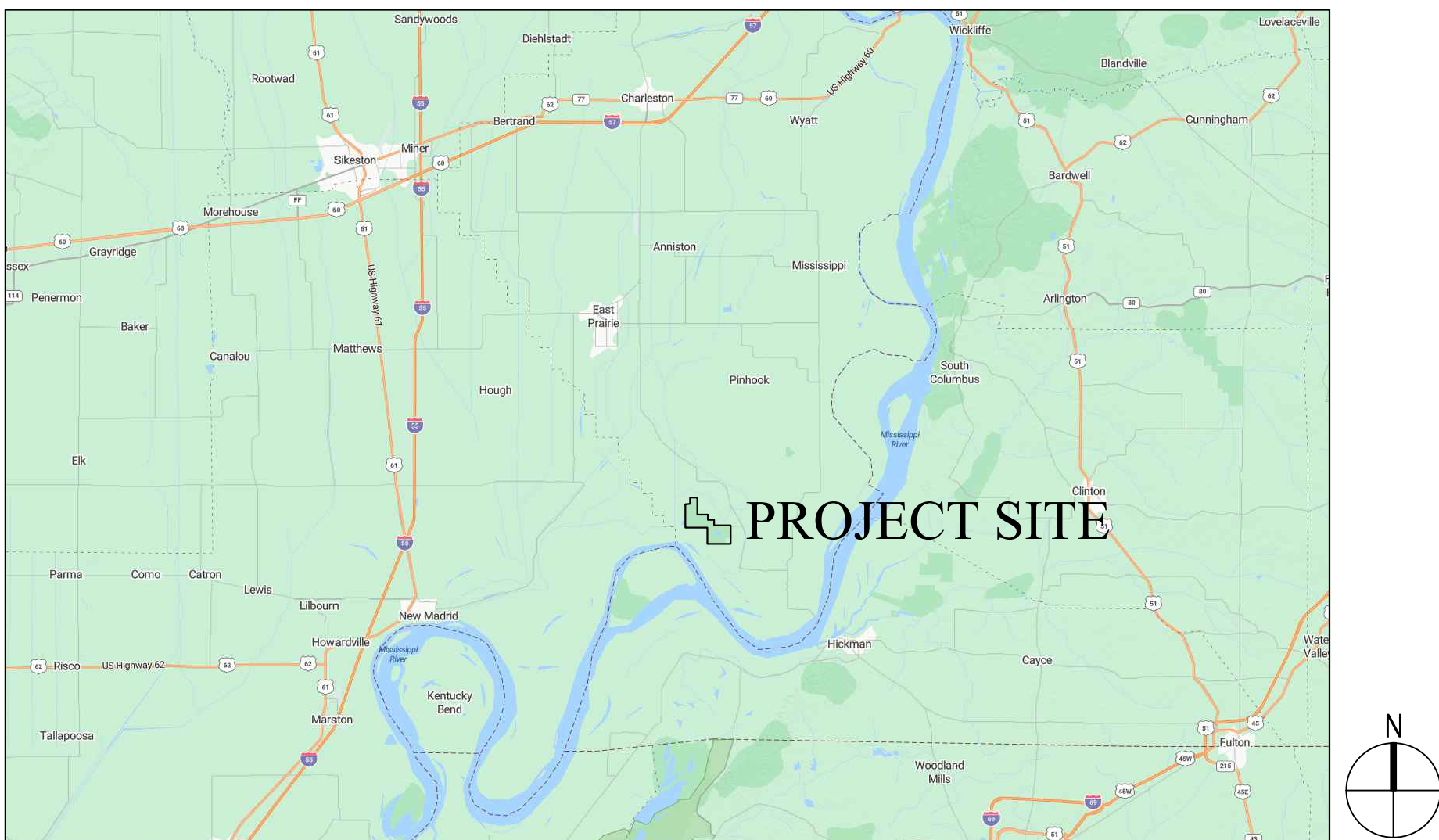


EXTEND METAL BOARDWALK BIG OAK TREE STATE PARK East Prairie, Missouri



LOCATION MAP

SHEET INDEX:

- G-001 - COVER
- G-101 - BOARDWALK OVERALL
- L-101 - BOARDWALK LAYOUT
- L-401 - BOARDWALK ENLARGEMENT
- L-402 - BOARDWALK ENLARGEMENT
- L-501 - BOARDWALK DETAILS
COMPONENTS
- L-502 - BOARDWALK DETAILS
- L-503 - BOARDWALK DETAILS
- ASSEMBLY PLAN
- L-504 - BOARDWALK DETAILS

OWNER:

STATE OF MISSOURI
MIKE KEHOE,
GOVERNOR

DEPARTMENT OF
NATURAL RESOURCES
DIVISION OF
MISSOURI STATE PARKS

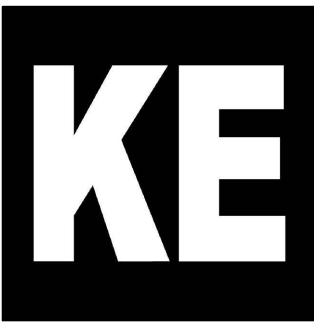
PROJECT MANAGEMENT:

OFFICE OF ADMINISTRATION
DIVISION OF FACILITIES
MANAGEMENT,
DESIGN AND CONSTRUCTION



LANDSCAPE ARCHITECT
PLANNING DESIGN STUDIO
2816 Sutton Boulevard, Suite 1
Saint Louis, Missouri 63143
314-241-3600

STRUCTURAL ENGINEERING
FORSYTH ENGINEERING
1102 South Eighteenth St.
Saint Louis, Missouri 63104



GEOTECHNICAL ENGINEERING
KOEHLER ENGINEERING
194 Coker Lane
Cape Girardeau, Missouri 63701
573-335-3026

DESIGNER:

PLANNING DESIGN STUDIO
JEFF NILGES, PLA
jeffnilges@planningdesignstudio.com

PROJECT NUMBER:

X2407-01

SITE NUMBER:

5203

FACILITY NUMBER:

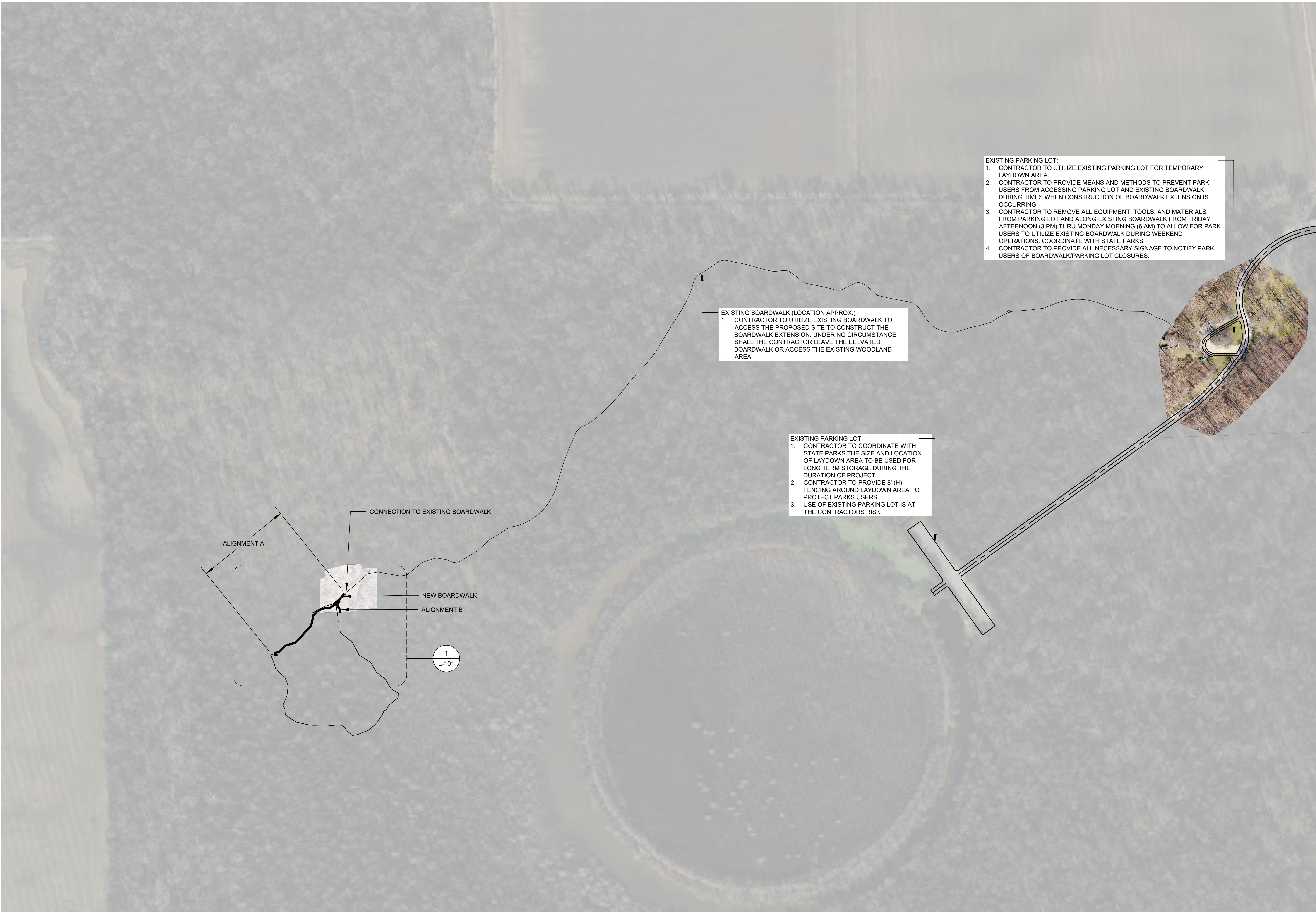
7815203011



SHEET NUMBER:

G-001

1 OF 9 SHEETS
11/26/2025



EXISTING PARKING LOT:
1. CONTRACTOR TO UTILIZE EXISTING PARKING LOT FOR TEMPORARY LAYDOWN AREA.
2. CONTRACTOR TO PROVIDE MEANS AND METHODS TO PREVENT PARK USERS FROM ACCESSING PARKING LOT AND EXISTING BOARDWALK DURING TIMES WHEN CONSTRUCTION OF BOARDWALK EXTENSION IS OCCURRING.
3. CONTRACTOR TO REMOVE ALL EQUIPMENT, TOOLS, AND MATERIALS FROM PARKING LOT AND ALONG EXISTING BOARDWALK FROM FRIDAY AFTERNOON (3 PM) THRU MONDAY MORNING (6 AM) TO ALLOW FOR PARK USERS TO UTILIZE EXISTING BOARDWALK DURING WEEKEND OPERATIONS. COORDINATE WITH STATE PARKS.
4. CONTRACTOR TO PROVIDE ALL NECESSARY SIGNAGE TO NOTIFY PARK USERS OF BOARDWALK/PARKING LOT CLOSURES.

EXISTING BOARDWALK (LOCATION APPROX.)
1. CONTRACTOR TO UTILIZE EXISTING BOARDWALK TO ACCESS THE PROPOSED SITE TO CONSTRUCT THE BOARDWALK EXTENSION. UNDER NO CIRCUMSTANCE SHALL THE CONTRACTOR LEAVE THE ELEVATED BOARDWALK OR ACCESS THE EXISTING WOODLAND AREA.

EXISTING PARKING LOT
1. CONTRACTOR TO COORDINATE WITH STATE PARKS THE SIZE AND LOCATION OF LAYDOWN AREA TO BE USED FOR LONG TERM STORAGE DURING THE DURATION OF PROJECT.
2. CONTRACTOR TO PROVIDE 8' (H) FENCING AROUND LAYDOWN AREA TO PROTECT PARKS USERS.
3. USE OF EXISTING PARKING LOT IS AT THE CONTRACTORS RISK.



NAME: JEFFREY E. NILGES
DISCIPLINE: LANDSCAPE ARCHITECT
LICENSE NO.: 2006005037
EXPIRATION DATE: DECEMBER 31, 2026



CERT. OF AUTHORITY: LAC-2006001845
EXPIRATION DATE: DECEMBER 31, 2026
2816 Sutton Boulevard, Suite 1
Saint Louis, Missouri 63143
314-241-3600

STRUCTURAL
FORSYTH ENGINEERING
LICENSE NO.: 001100
EXPIRATION DATE: DECEMBER 31, 2025
1102 South Eighteenth St.
Saint Louis, Missouri 63104

GEOTECHNICAL
KOEHLER ENGINEERING
License NO:
Expiration Date:
194 Coker Lane
Cape Girardeau, Missouri 63701
573-335-3026

OFFICE OF ADMINISTRATION
DIVISION OF FACILITIES
MANAGEMENT,
DESIGN AND CONSTRUCTION

DEPARTMENT OF
NATURAL RESOURCES
DIVISION OF STATE PARKS

EXTEND METAL BOARDWALK

BIG OAK TREE STATE PARK
13640 MO-102
EAST PRAIRIE, MO 63845

PROJECT # X2407-01
SITE # 5203
FACILITY # 7815203011

REVISION: _____
DATE: _____
REVISION: _____
DATE: _____
REVISION: _____
DATE: _____

ISSUE DATE: 11/26/2025

CAD DWG FILE: X2407-01-5203-7815203011.G-101.DWG
DRAWN BY: CLS
CHECKED BY: NTF/JEN
DESIGNED BY: JEN

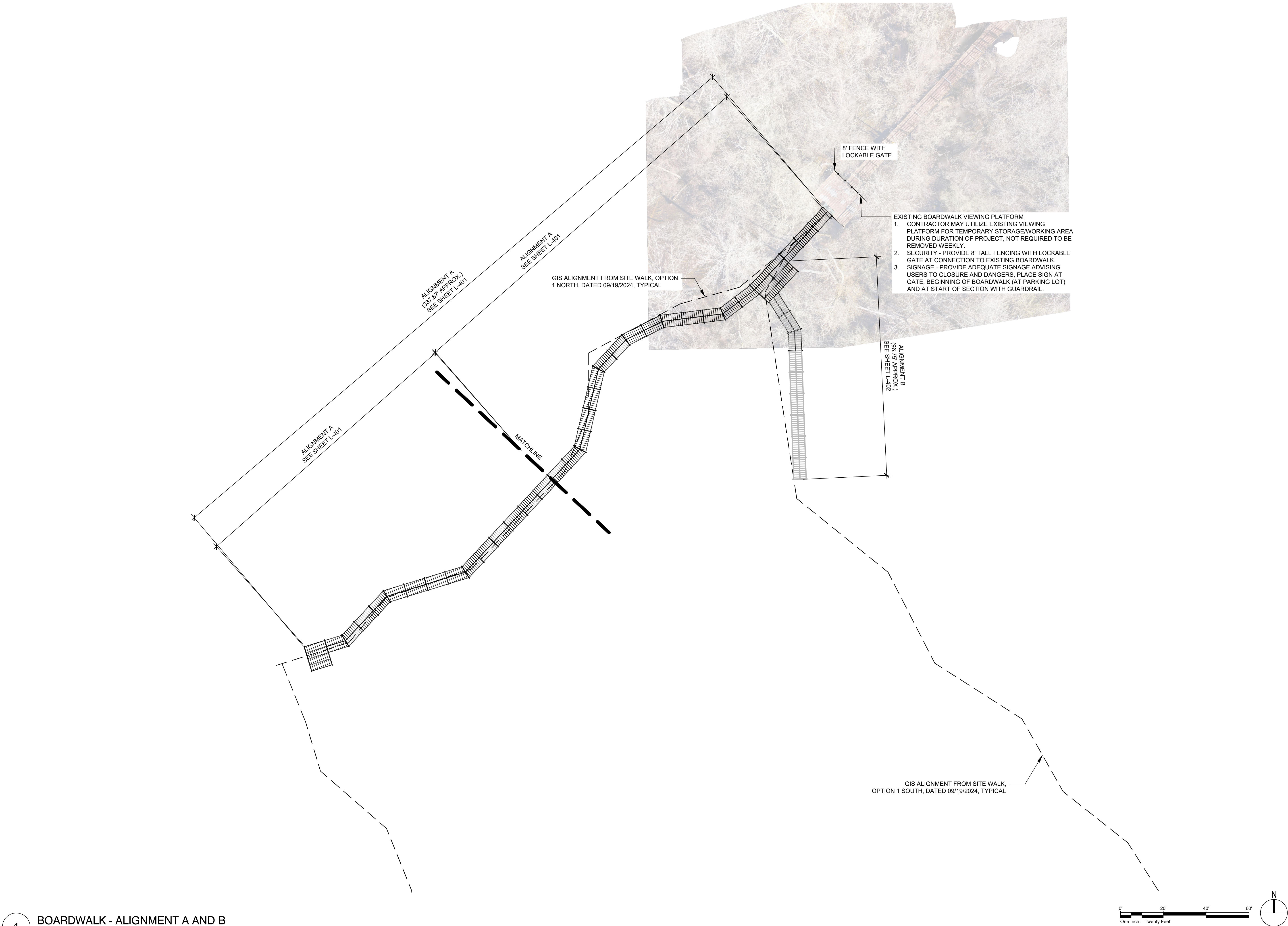
SHEET TITLE:

BOARDWALK
OVERALL

SHEET NUMBER:

G-101

2 OF 9 SHEETS
11/26/2025



STATE OF MISSOURI
MIKE L. KEHOE,
GOVERNOR

STATE OF MISSOURI
JEFFREY E. NILGES
LANDSCAPE ARCHITECT
LA-2006005037

NAME: JEFFREY E. NILGES
DISCIPLINE: LANDSCAPE ARCHITECT
LICENSE NO: 2006005037
EXPIRATION DATE: DECEMBER 31, 2026

LANDSCAPE ARCHITECT
PLANNING
DESIGN
STUDIO

CERT. OF AUTHORITY: LAC-2006001845
EXPIRATION DATE: DECEMBER 31, 2026
2816 Sutton Boulevard, Suite 1
Saint Louis, Missouri 63143
314-241-3600

STRUCTURAL
FORSYTH ENGINEERING
LICENSE NO: 001100
EXPIRATION DATE: DECEMBER 31, 2025
1102 South Eighteenth St.
Saint Louis, Missouri 63104

GEOTECHNICAL
KOEHLER ENGINEERING
License NO:
Expiration Date:
194 Coker Lane
Cape Girardeau, Missouri 63701
573-335-3026

OFFICE OF ADMINISTRATION
DIVISION OF FACILITIES
MANAGEMENT,
DESIGN AND CONSTRUCTION

DEPARTMENT OF
NATURAL RESOURCES
DIVISION OF STATE PARKS

EXTEND METAL BOARDWALK

BIG OAK TREE STATE PARK
13640 MO-102
EAST PRAIRIE, MO 63845

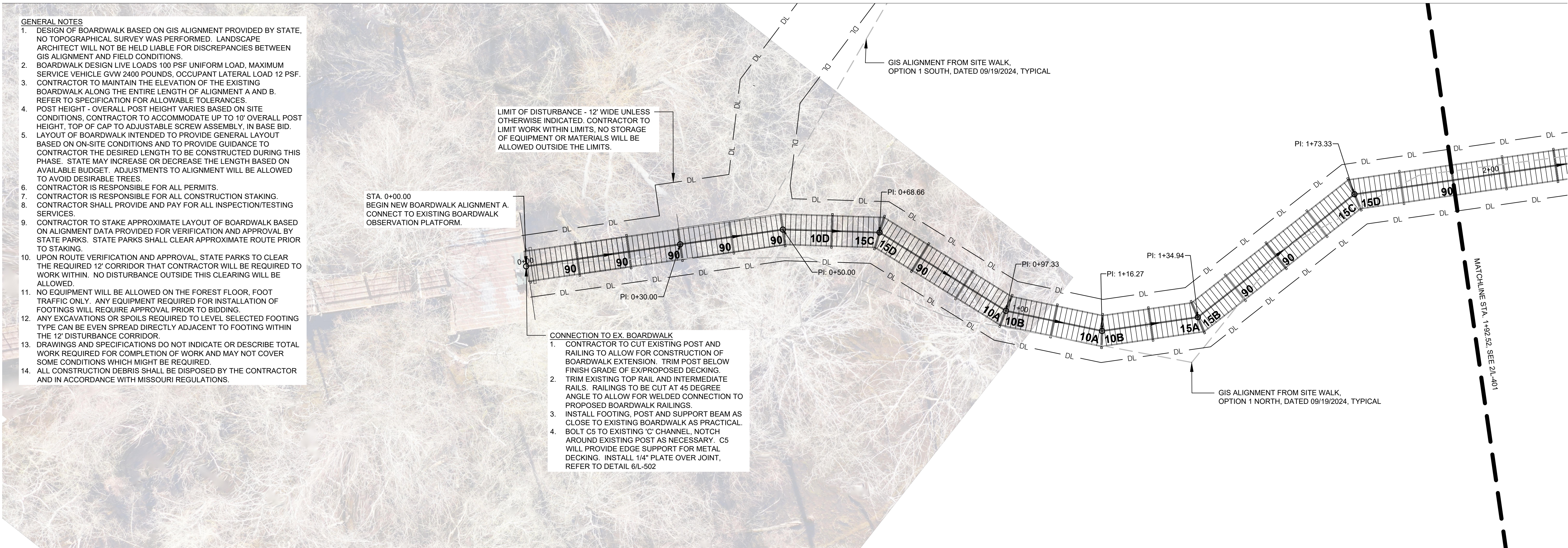
PROJECT # X2407-01
SITE # 5203
FACILITY # 7815203011

REVISION: _____
DATE: _____
REVISION: _____
DATE: _____
REVISION: _____
DATE: _____
ISSUE DATE: 11/26/2025

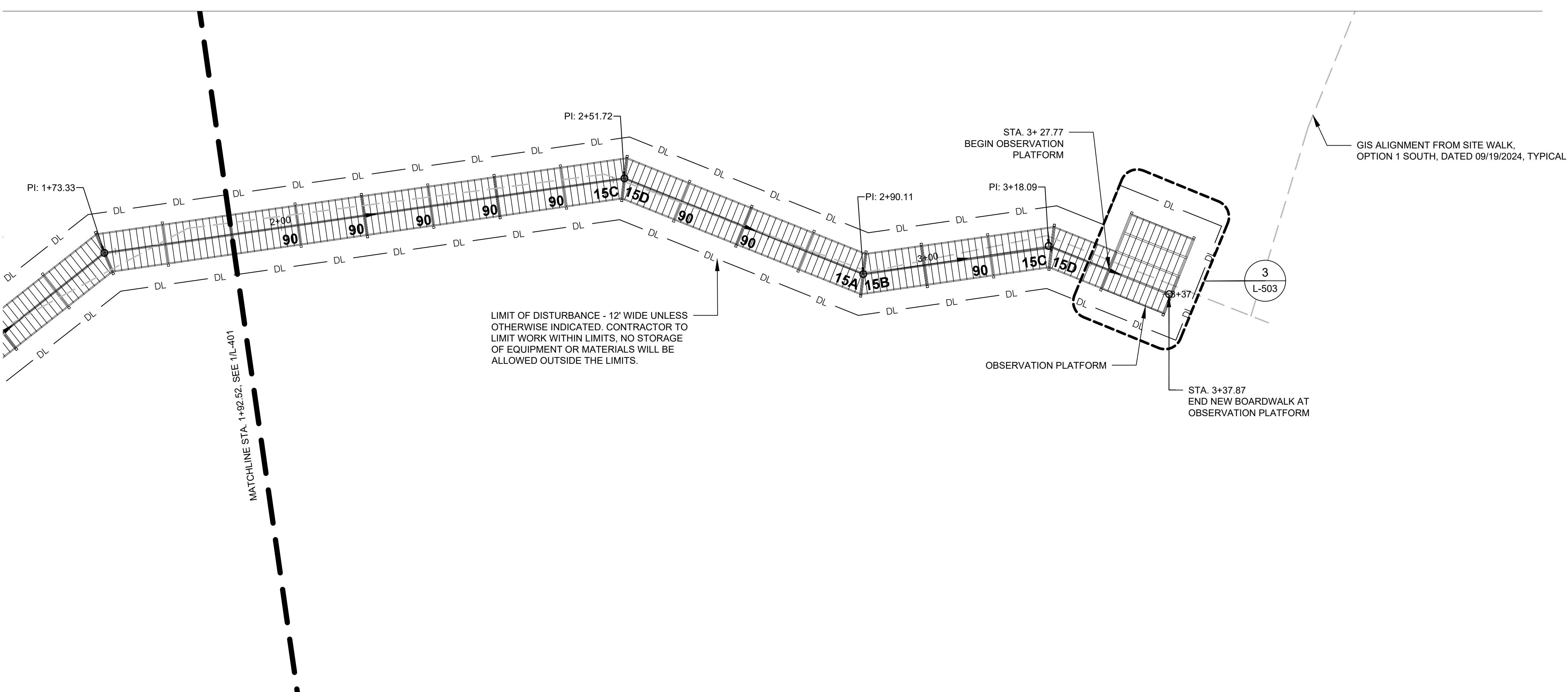
CAD DWG FILE: X2407-01-5203-7815203011.L-101.DWG
DRAWN BY: CLS
CHECKED BY: NTF/JEN
DESIGNED BY: JEN

SHEET TITLE:
BOARDWALK
LAYOUT

SHEET NUMBER:
L-101
3 OF 9 SHEETS
11/26/2025



1 BOARDWALK - ALIGNMENT A - STA. 0+00.00 TO STA. 1+92.52
1" = 10'



2 BOARDWALK - ALIGNMENT A - STA. 1+92.52 TO STA. 3+37.87
1" = 10'

STATE OF MISSOURI
MIKE L. KEHOE,
GOVERNOR



NAME: JEFFREY E. NILGES
DISCIPLINE: LANDSCAPE ARCHITECT
LICENSE NO.: 2006005037
EXPIRATION DATE: DECEMBER 31, 2026

LANDSCAPE ARCHITECT
**PLANNING
DESIGN
STUDIO**

CERT. OF AUTHORITY: LAC-2006001845
EXPIRATION DATE: DECEMBER 31, 2026
2816 Sutton Boulevard, Suite 1
Saint Louis, Missouri 63143
314-241-3600

STRUCTURAL
FORSYTH ENGINEERING
LICENSE NO.: 001100
EXPIRATION DATE: DECEMBER 31, 2025
1102 South Eighteenth St.
Saint Louis, Missouri 63104

GEOTECHNICAL

KOEHLER ENGINEERING
License NO.:
Expiration Date:
194 Coker Lane
Cape Girardeau, Missouri 63701
573-335-3026

OFFICE OF ADMINISTRATION
DIVISION OF FACILITIES
MANAGEMENT,
DESIGN AND CONSTRUCTION

DEPARTMENT OF
NATURAL RESOURCES
DIVISION OF STATE PARKS

EXTEND METAL BOARDWALK

BIG OAK TREE STATE PARK
13640 MO-102
EAST PRAIRIE, MO 63845

PROJECT # X2407-01
SITE # 5203
FACILITY # 7815203011

REVISION: _____
DATE: _____
REVISION: _____
DATE: _____
REVISION: _____
DATE: _____
ISSUE DATE: 11/26/2025

CAD DWG FILE: X2407-01.5203.7815203011.L-401.DWG
DRAWN BY: CLS
CHECKED BY: NTF/JEN
DESIGNED BY: JEN

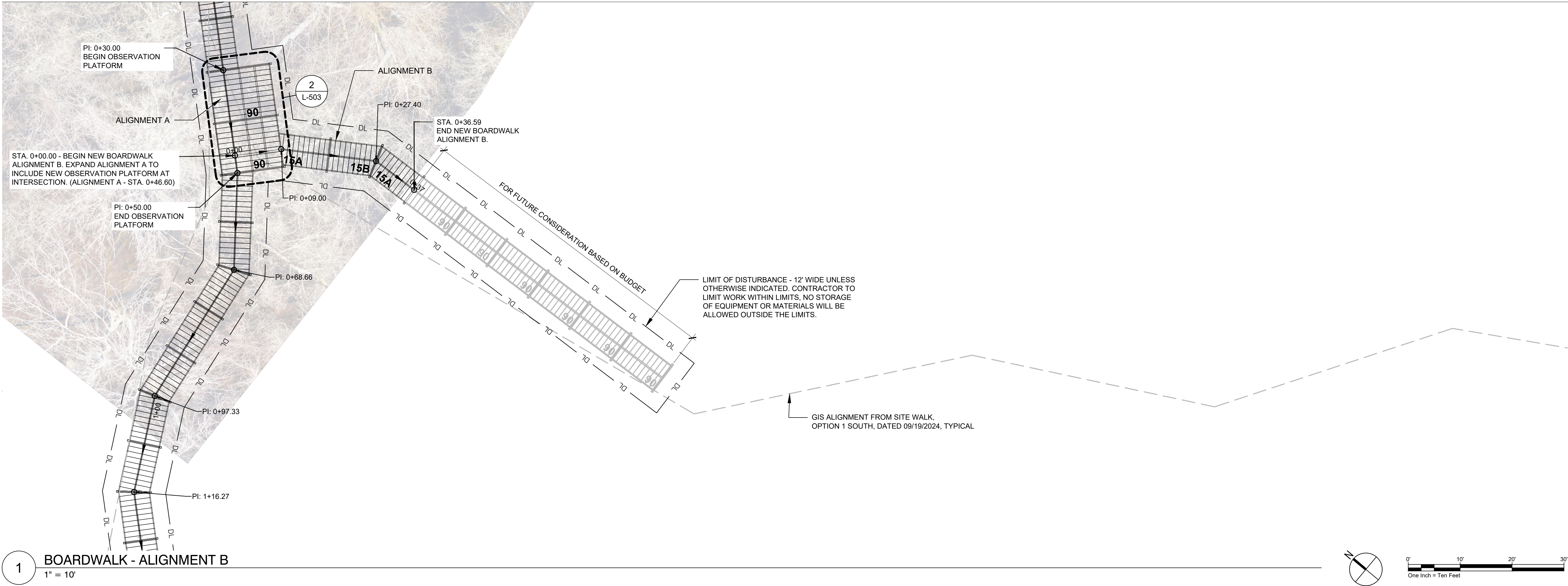
SHEET TITLE:

BOARDWALK
ENLARGEMENT

SHEET NUMBER:

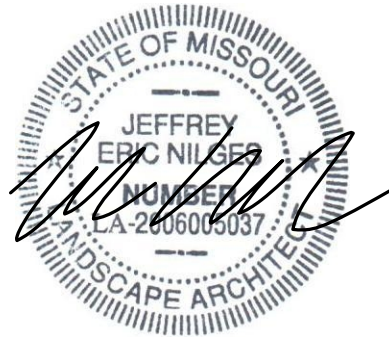
L-401

4 OF 9 SHEETS
11/26/2025



1 BOARDWALK - ALIGNMENT B
1" = 10'

STATE OF MISSOURI
MIKE L. KEHOE,
GOVERNOR



NAME: JEFFREY E. NILGES
DISCIPLINE: LANDSCAPE ARCHITECT
LICENSE NO: 2006005037
EXPIRATION DATE: DECEMBER 31, 2026

LANDSCAPE ARCHITECT
**PLANNING
DESIGN
STUDIO**

CERT. OF AUTHORITY: LAC-2006001845
EXPIRATION DATE: DECEMBER 31, 2026
2816 Sutton Boulevard, Suite 1
Saint Louis, Missouri 63143
314-241-3600

STRUCTURAL
FORSYTH ENGINEERING
LICENSE NO: 001100
EXPIRATION DATE: DECEMBER 31, 2025
1102 South Eighteenth St.
Saint Louis, Missouri 63104

GEOTECHNICAL

KOEHLER ENGINEERING
License NO:
Expiration Date:
194 Coker Lane
Cape Girardeau, Missouri 63701
573-335-3026

OFFICE OF ADMINISTRATION
DIVISION OF FACILITIES
MANAGEMENT,
DESIGN AND CONSTRUCTION

DEPARTMENT OF
NATURAL RESOURCES
DIVISION OF STATE PARKS

EXTEND METAL BOARDWALK

BIG OAK TREE STATE PARK
13640 MO-102
EAST PRAIRIE, MO 63845

PROJECT # X2407-01
SITE # 5203
FACILITY # 7815203011

REVISION: _____
DATE: _____
REVISION: _____
DATE: _____
REVISION: _____
DATE: _____

ISSUE DATE: 11/26/2025

CAD DWG FILE: X2407-01.5203.7815203011.L-402.DWG
DRAWN BY: CLS
CHECKED BY: NTF/JEN
DESIGNED BY: JEN

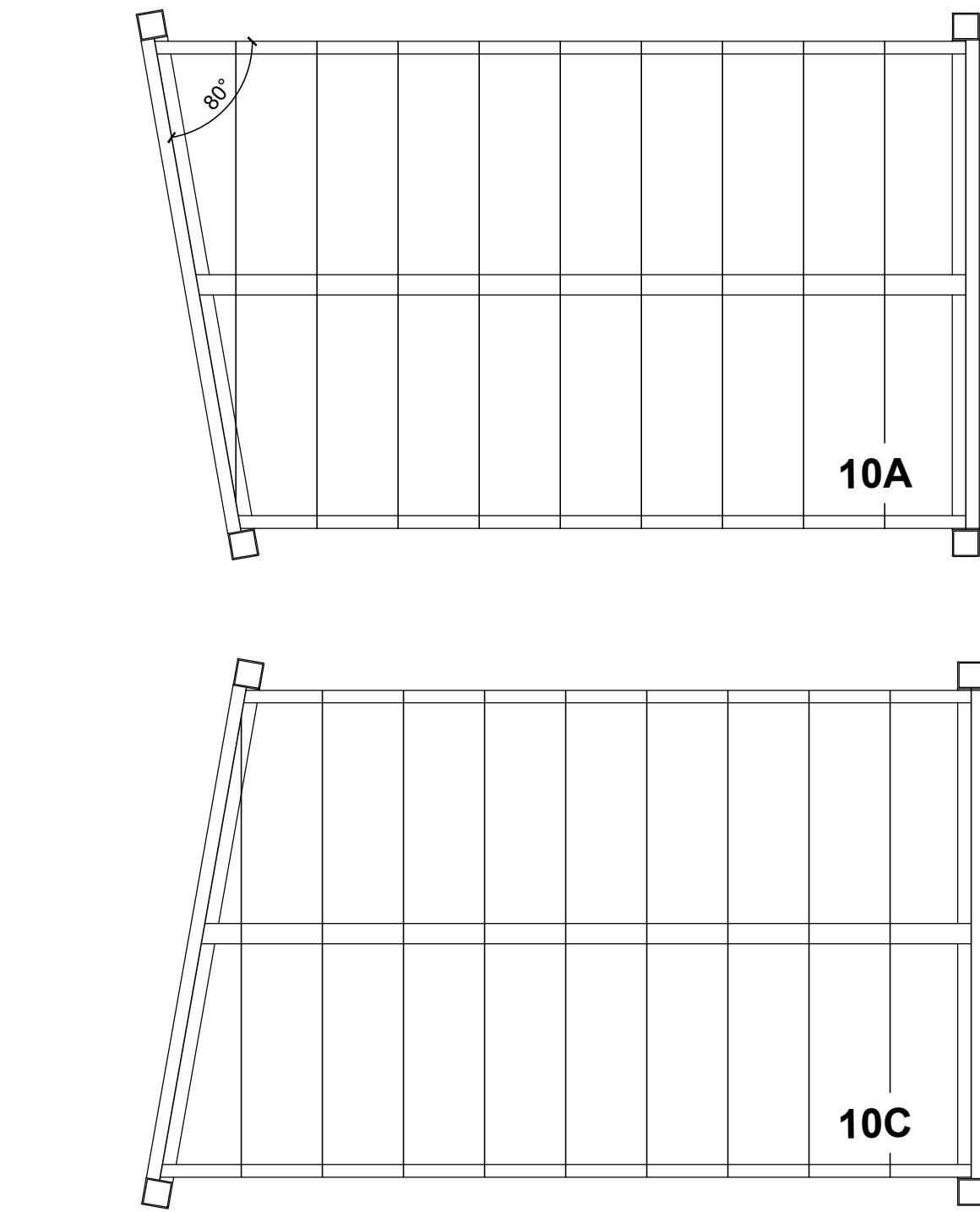
SHEET TITLE:

BOARDWALK
ENLARGEMENT

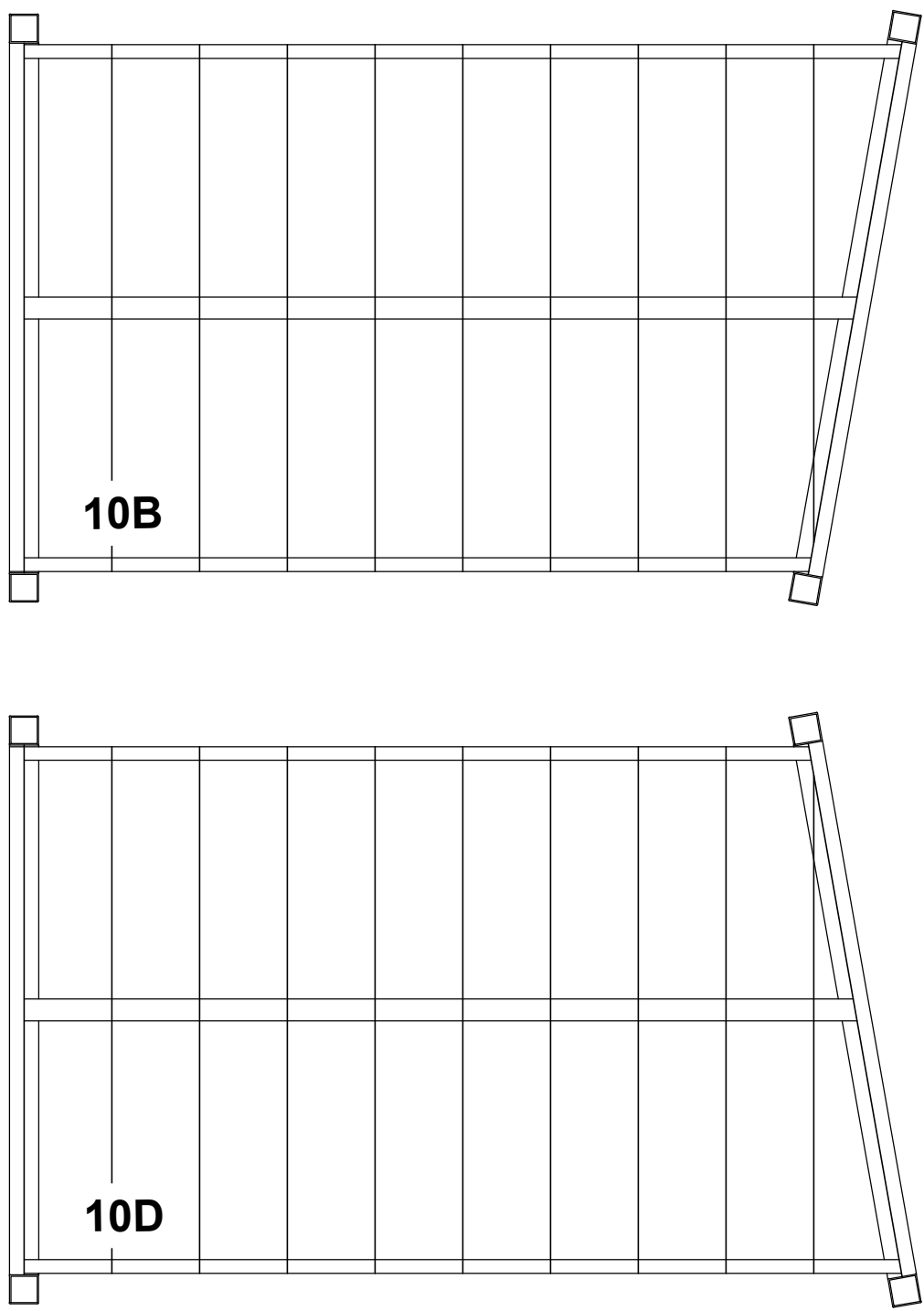
SHEET NUMBER:

L-402

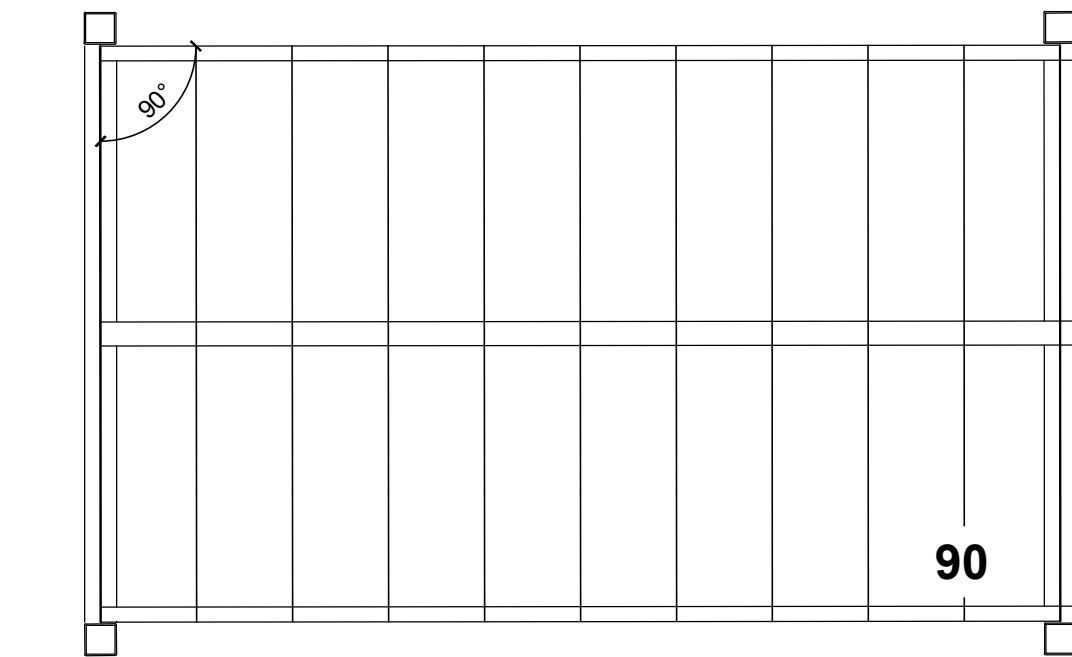
5 OF 9 SHEETS
11/26/2025



1 10 DEGREE ANGLED BOARDWALK
1" = 2'



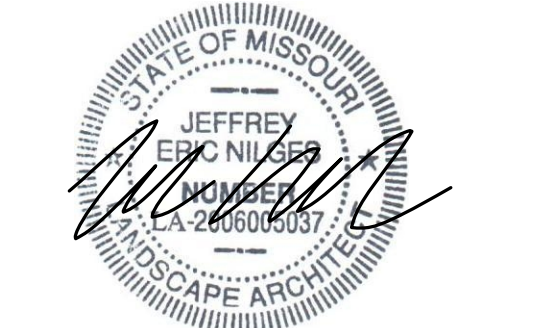
2 15 DEGREE ANGLED BOARDWALK
1" = 2'



3 STRAIGHT BOARDWALK
1" = 2'

COMPONENT QUANTITY			
TYPE	TOTAL	ALIGNMENT A	ALIGNMENT B
STRAIGHT (90)	19	18	1
STRAIGHT (MODIFIED)	2	1	1
10			
A	2	2	X
B	2	2	X
C	X	X	X
D	1	1	X
15			
A	4	2	2
B	3	2	1
C	4	4	X
D	4	4	X

STATE OF MISSOURI
MIKE L. KEHOE,
GOVERNOR



NAME: JEFFREY E. NILGES
DISCIPLINE: LANDSCAPE ARCHITECT
LICENSE NO: 2006005037
EXPIRATION DATE: DECEMBER 31, 2026

LANDSCAPE ARCHITECT
**PLANNING
DESIGN
STUDIO**
CERT. OF AUTHORITY: LAC-2006001845
EXPIRATION DATE: DECEMBER 31, 2026
2816 Sutton Boulevard, Suite 1
Saint Louis, Missouri 63143
314-241-3600

STRUCTURAL
FORSYTH ENGINEERING
LICENSE NO: 001100
EXPIRATION DATE: DECEMBER 31, 2025
1102 South Eighteenth St.
Saint Louis, Missouri 63104

GEOTECHNICAL
KOEHLER ENGINEERING
License NO:
Expiration Date:
194 Coker Lane
Cape Girardeau, Missouri 63701
573-335-3026

OFFICE OF ADMINISTRATION
DIVISION OF FACILITIES
MANAGEMENT,
DESIGN AND CONSTRUCTION

DEPARTMENT OF
NATURAL RESOURCES
DIVISION OF STATE PARKS

EXTEND METAL BOARDWALK

BIG OAK TREE STATE PARK
13640 MO-102
EAST PRAIRIE, MO 63845

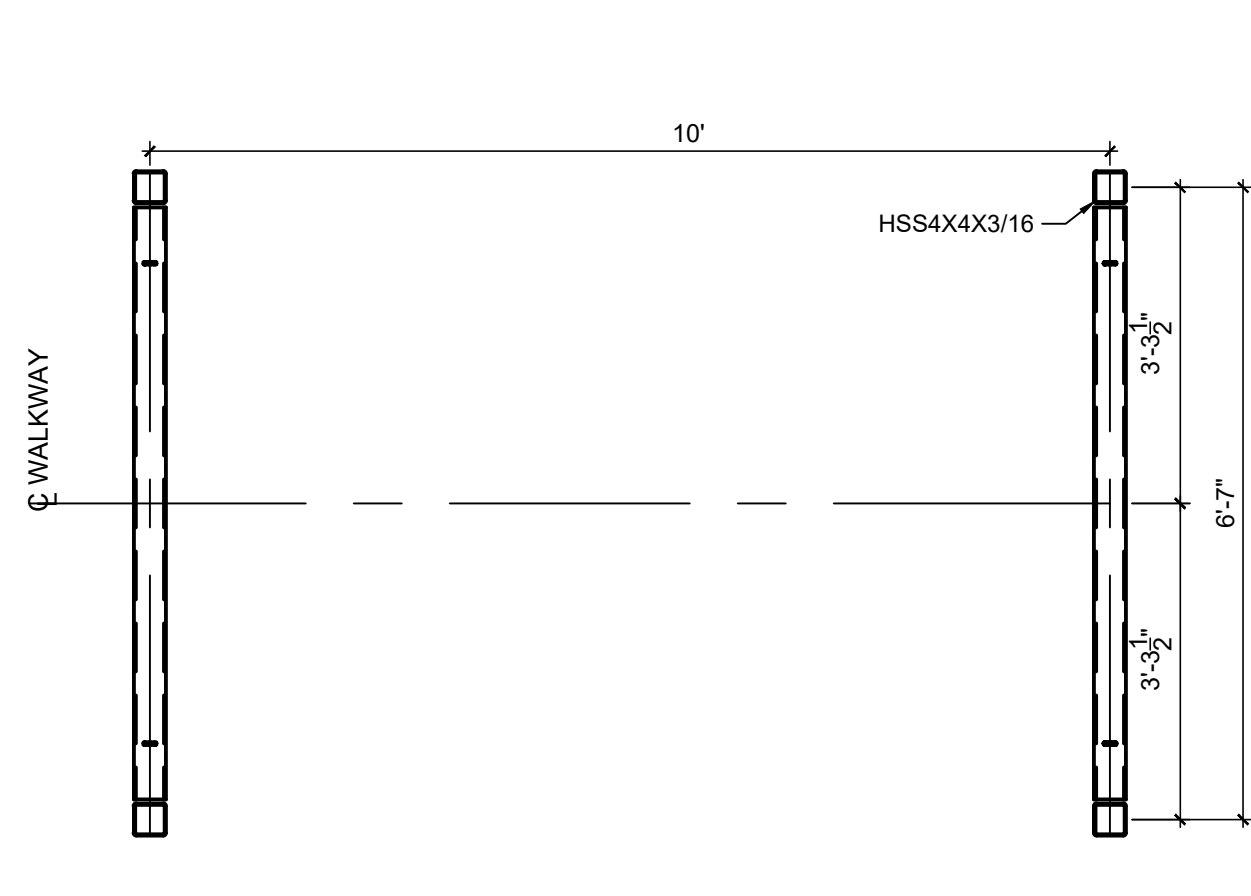
PROJECT # X2407-01
SITE # 5203
FACILITY # 7815203011

REVISION: _____
DATE: _____
REVISION: _____
DATE: _____
REVISION: _____
DATE: _____
ISSUE DATE: 11/26/2025

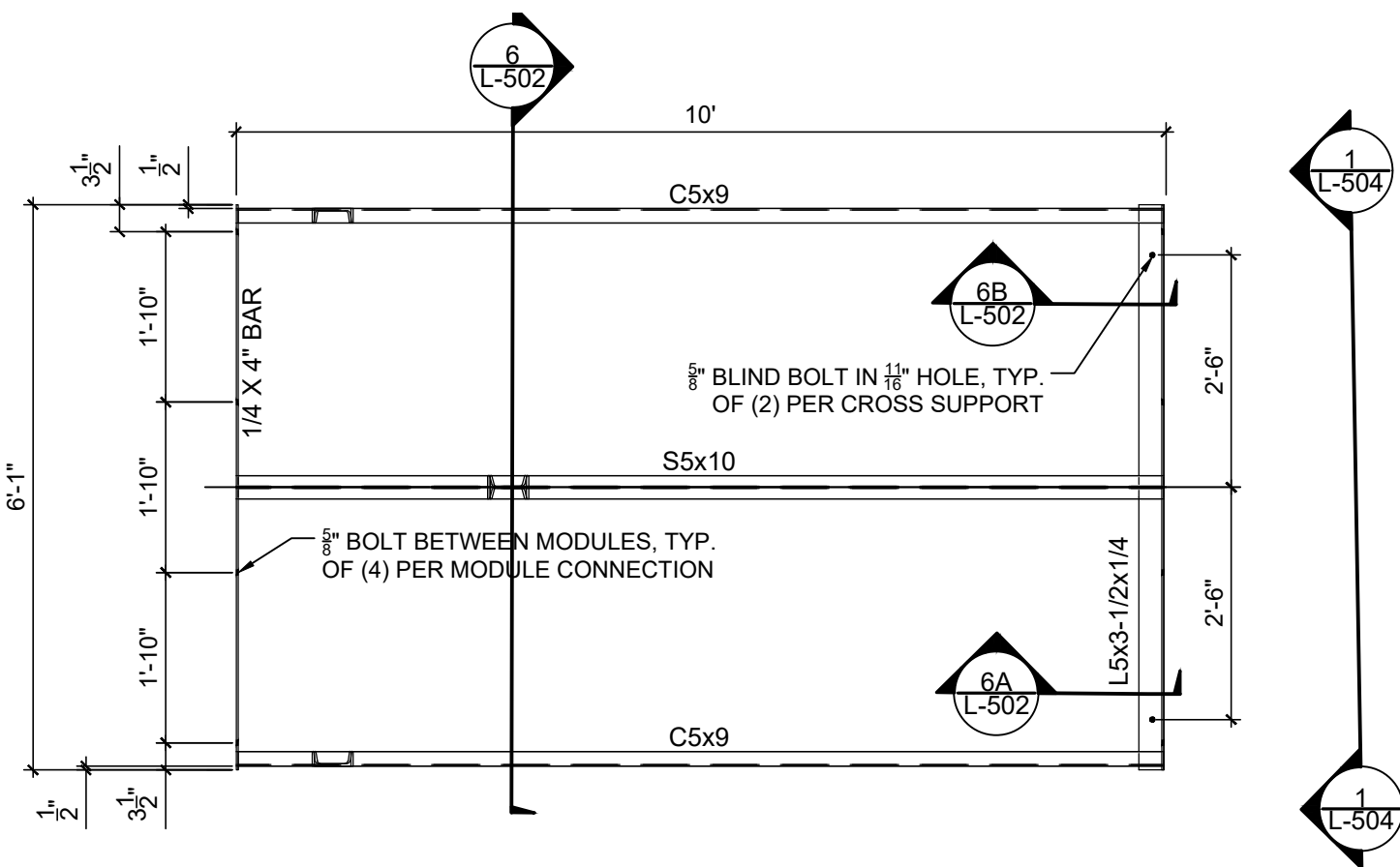
CAD DWG FILE: X2407-01.5203.7815203011.L-501.DWG
DRAWN BY: CLS
CHECKED BY: NTF/JEN
DESIGNED BY: JEN

SHEET TITLE:
**BOARDWALK
DETAILS
COMPONENTS**

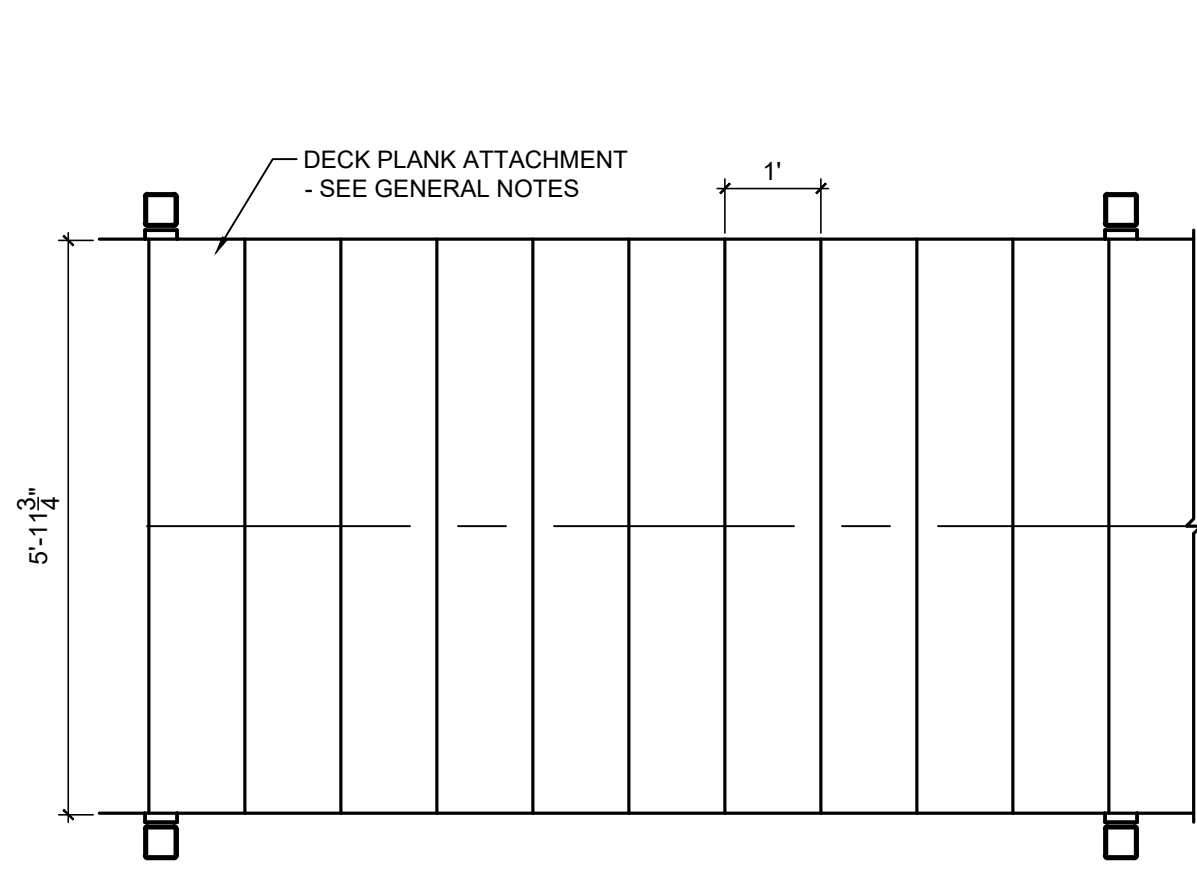
SHEET NUMBER:
L-501
6 OF 9 SHEETS
11/26/2025



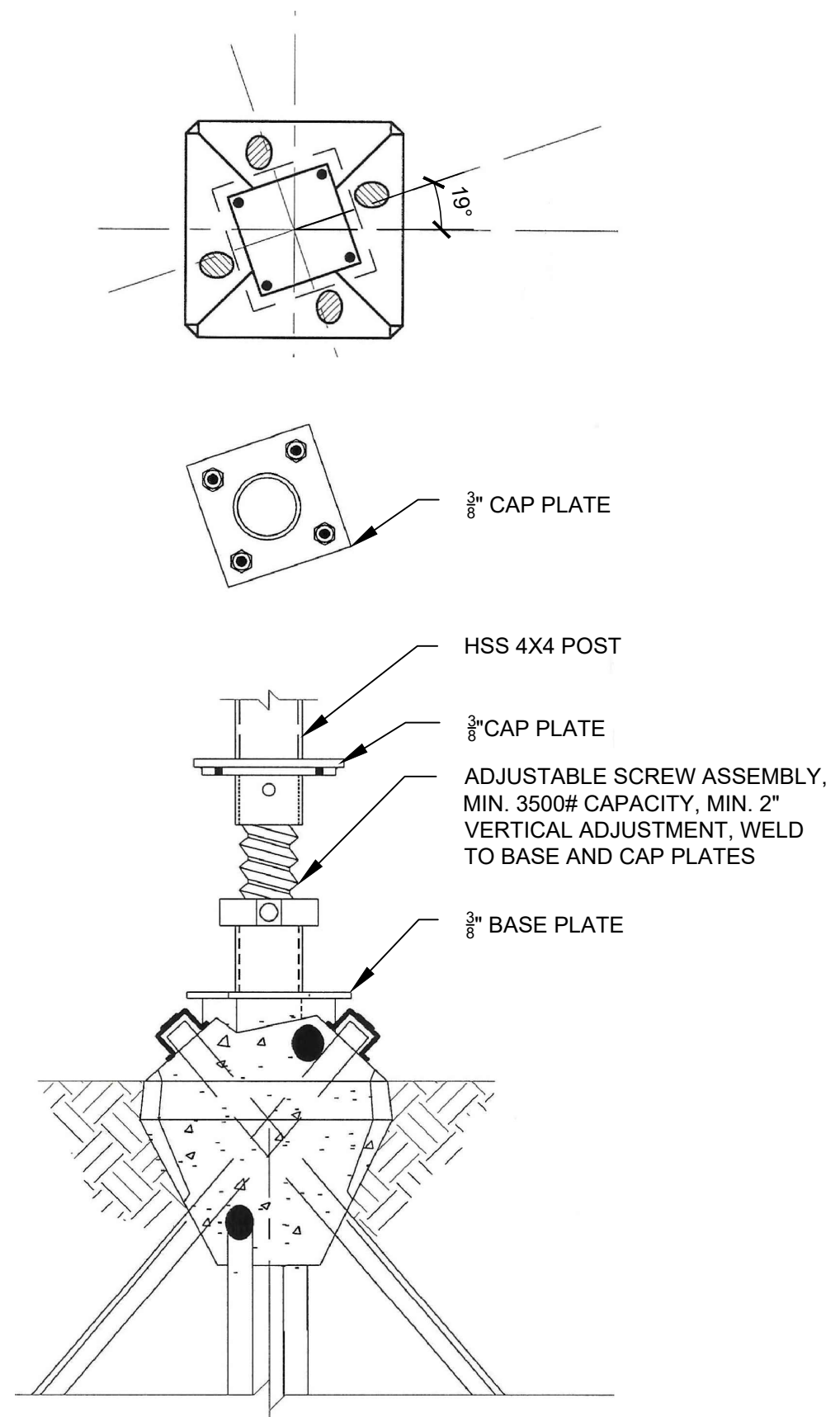
STRAIGHT MODULE



STRAIGHT MODULE

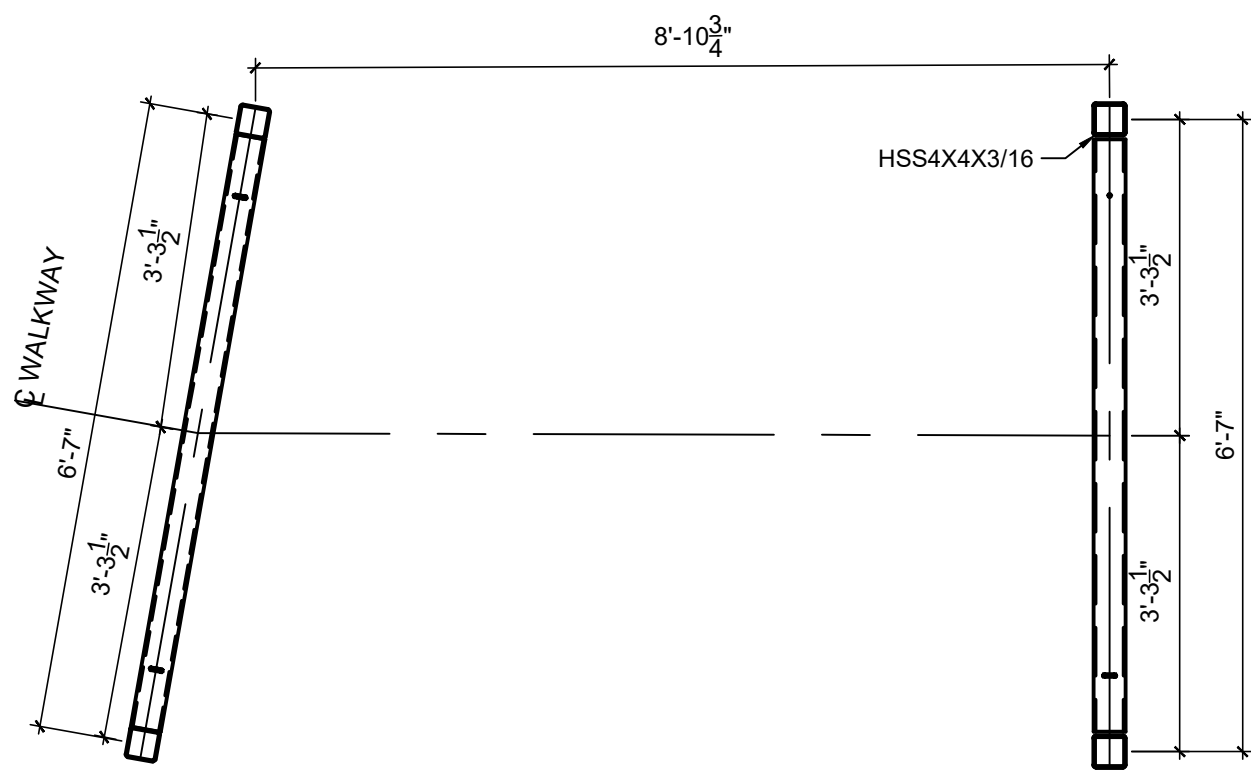


STRAIGHT MODULE

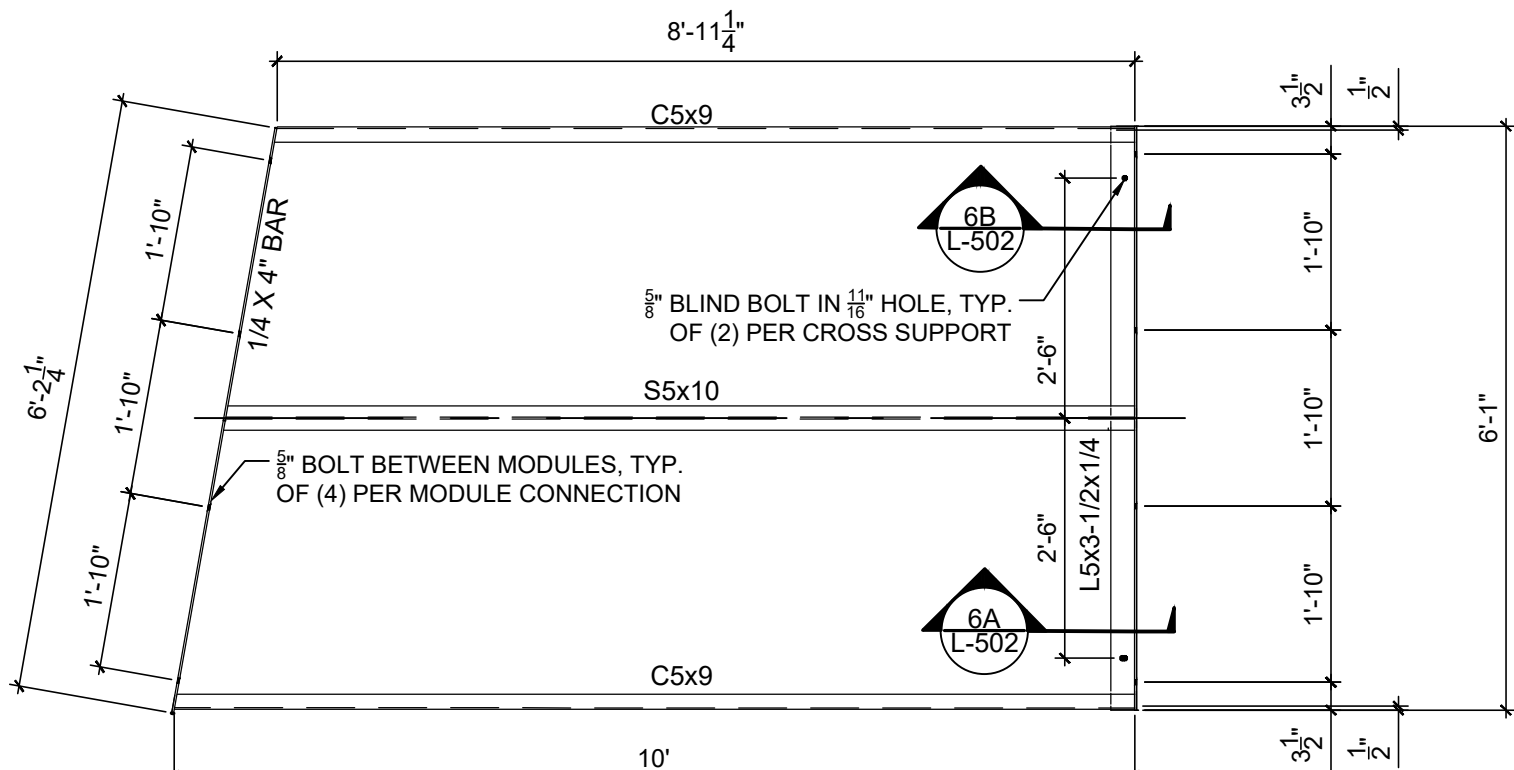


PIN PILE FOOTING

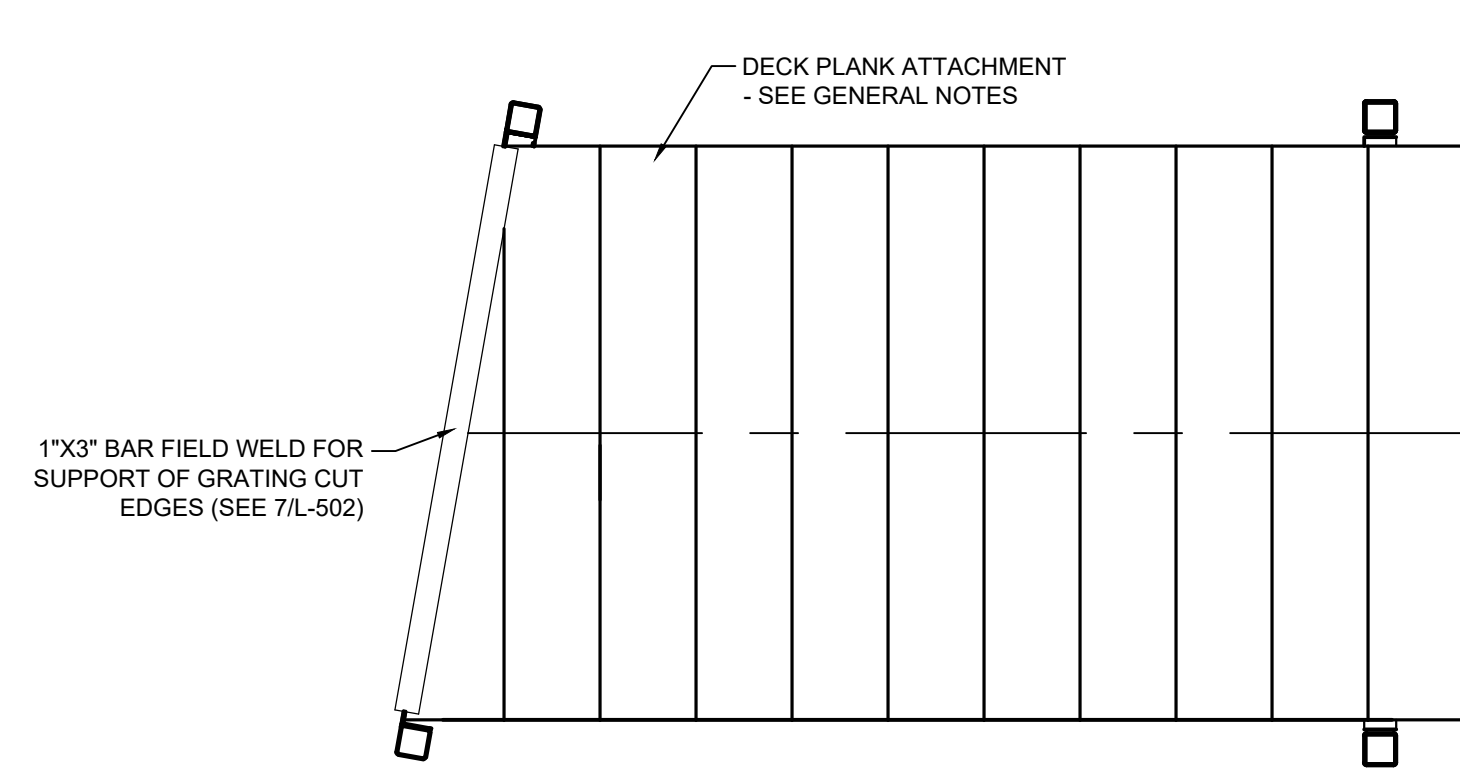
2" = 1"



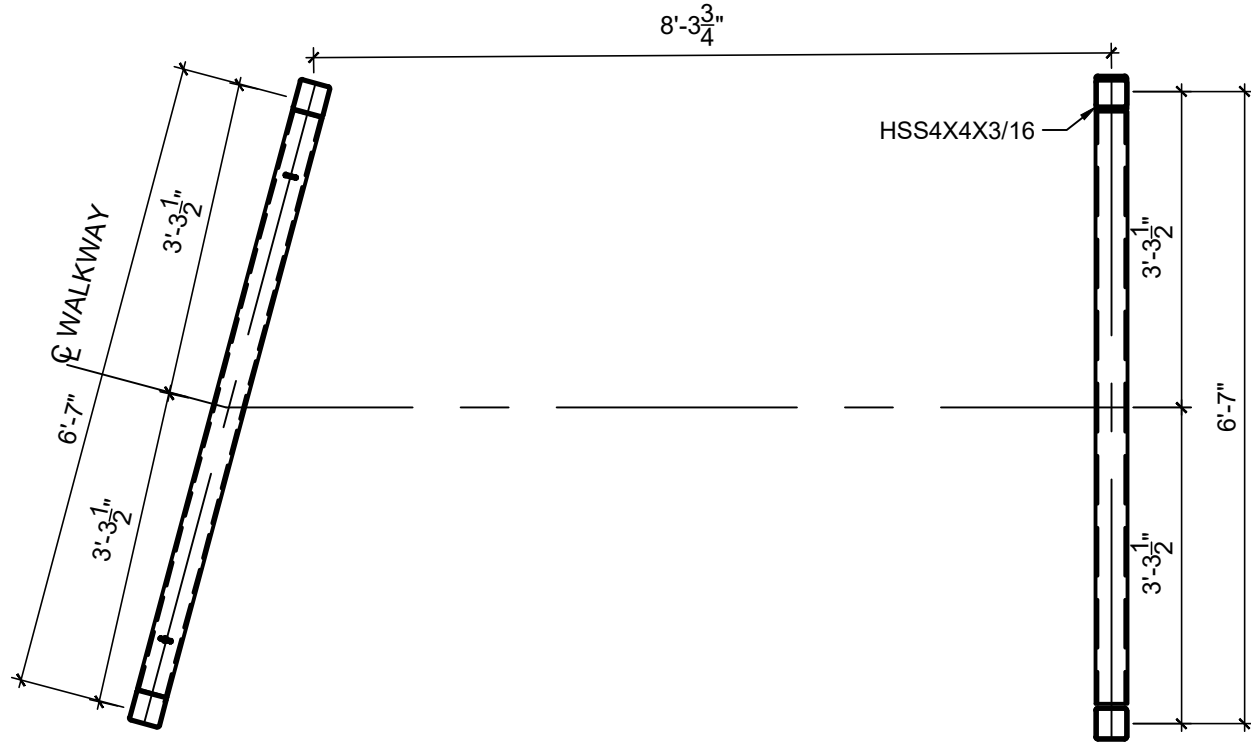
10 DEGREE MODULE



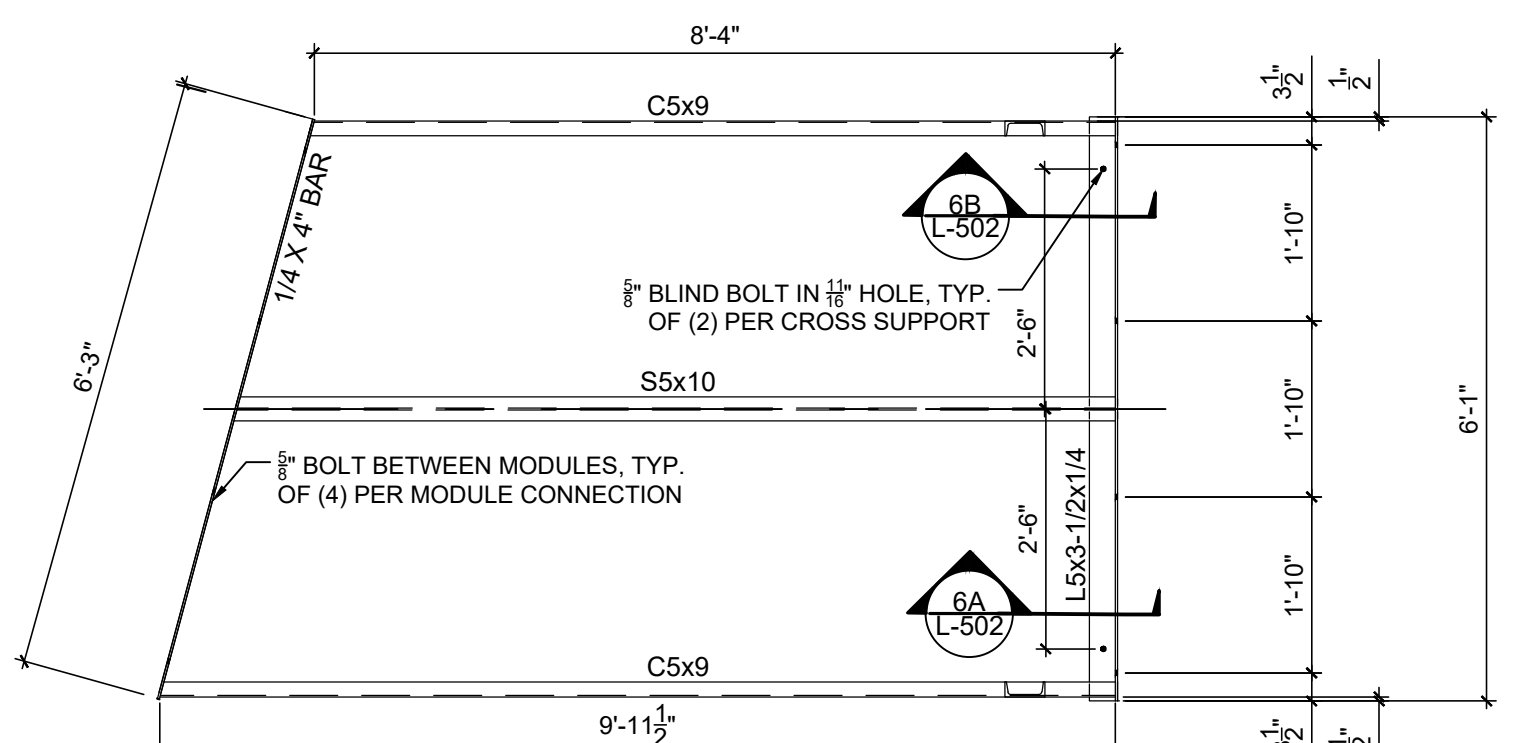
10 DEGREE MODULE



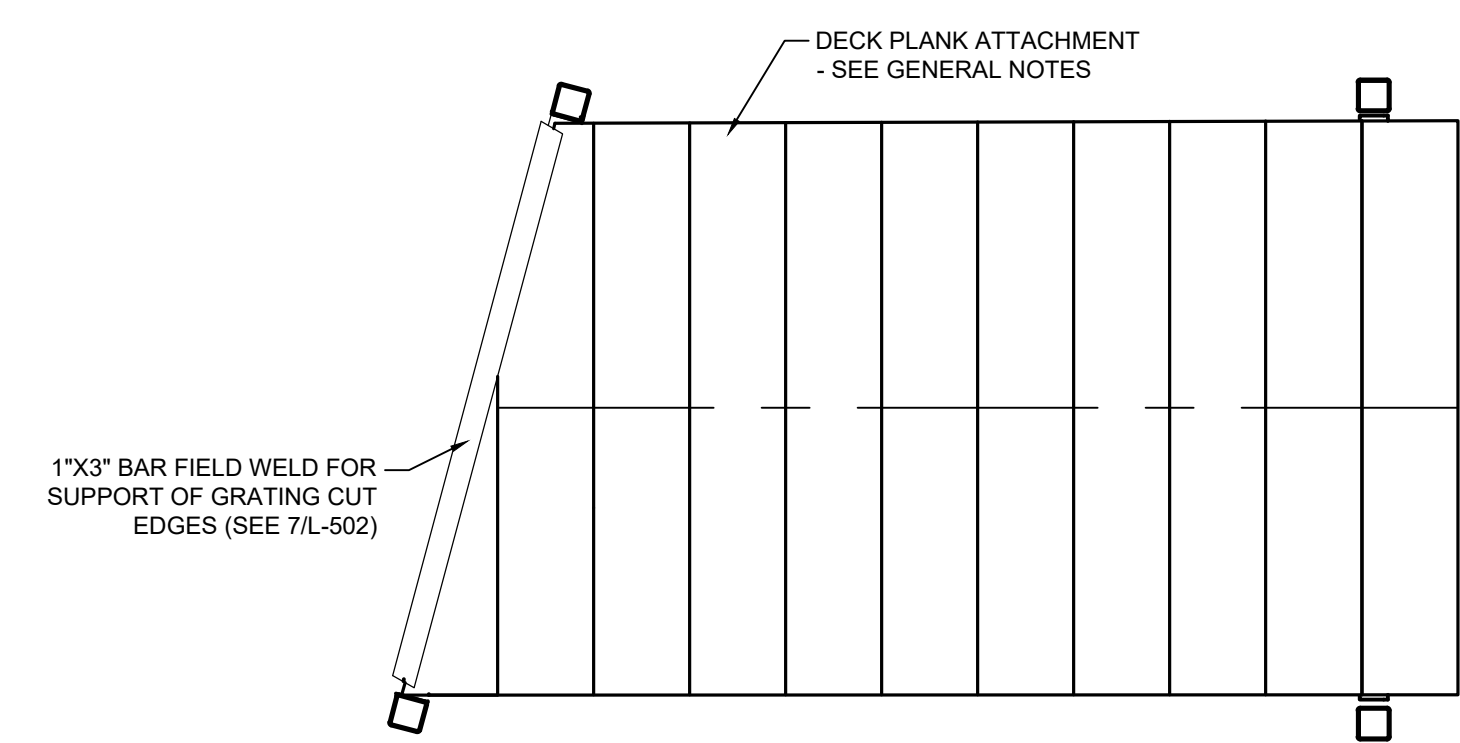
10 DEGREE MODULE



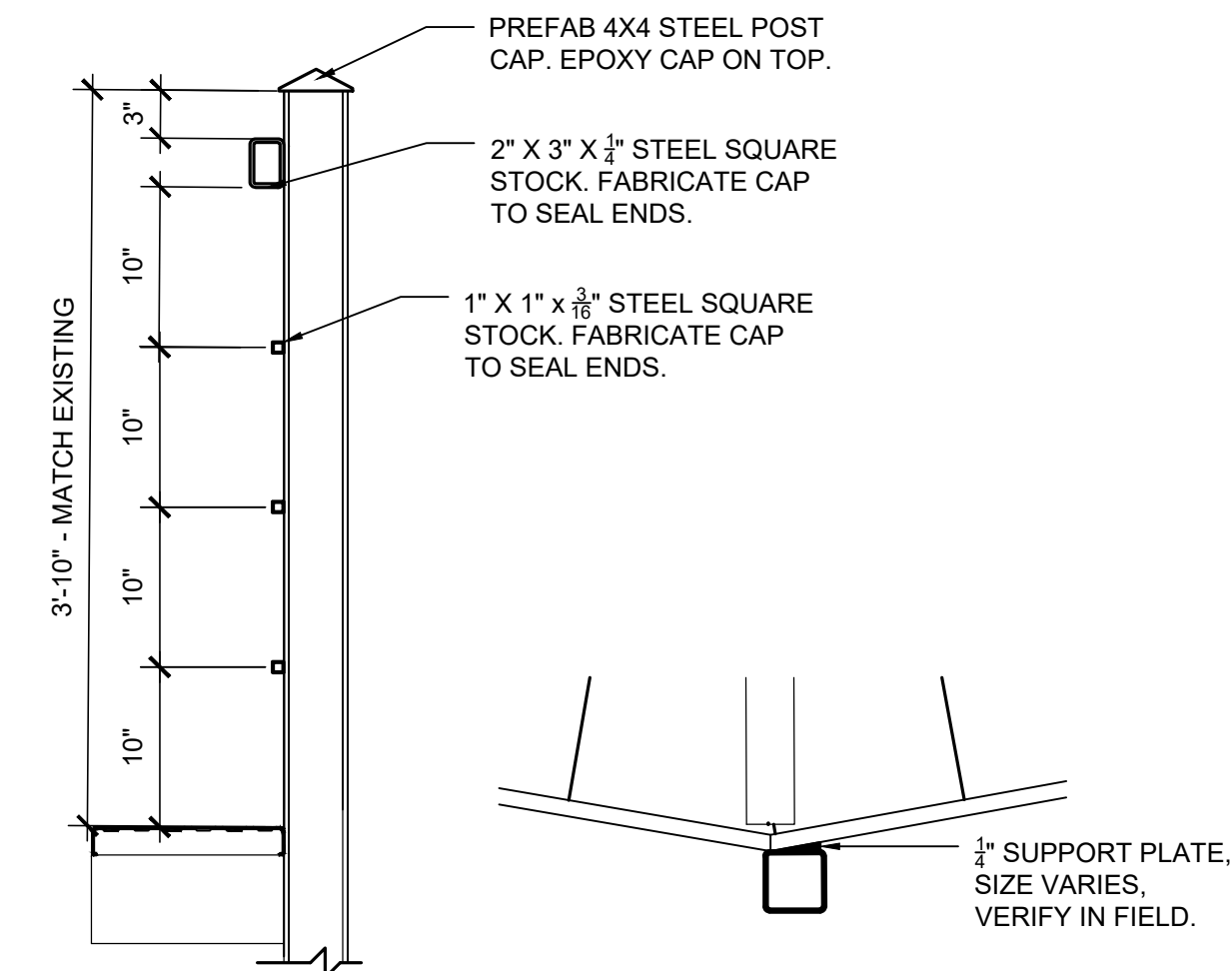
15 DEGREE MODULE



15 DEGREE MODULE



15 DEGREE MODULE



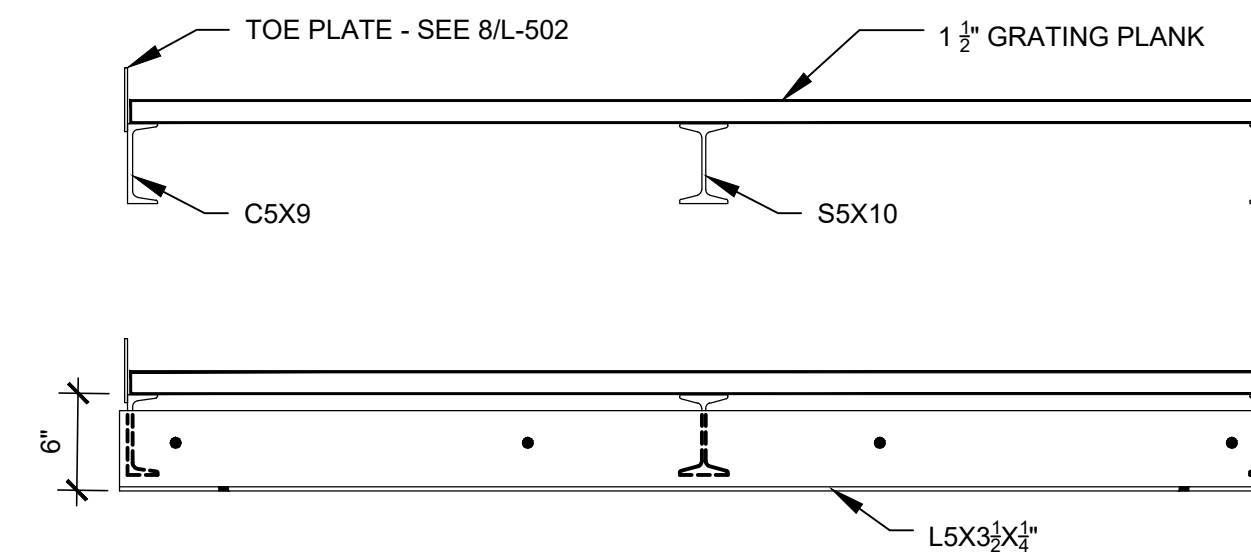
TYPICAL RAIL SUPPORT FOR ANGLED MODULES

1 FOUNDATION PLAN
1" = 2'

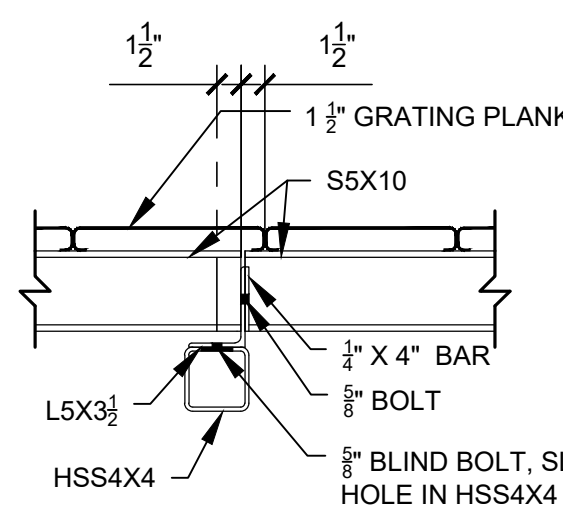
2 WALKWAY MODULAR FRAMING
1" = 2'

3 WALKWAY DECKING PLAN
1" = 2'

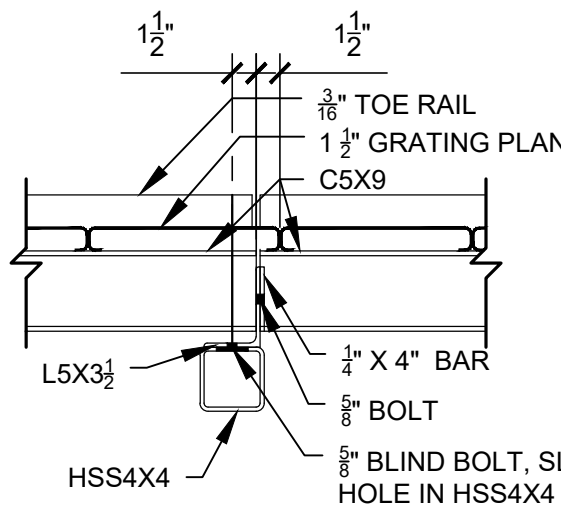
4 HANDRAIL SECTION
1" = 1'



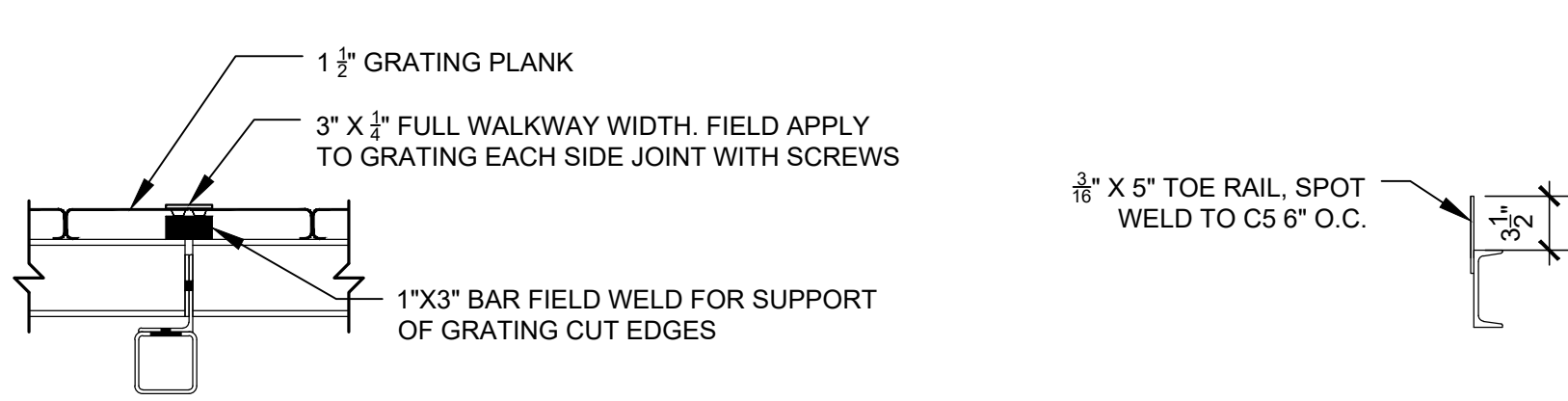
6 PLANK MODULE ASSEMBLY DETAIL
1" = 1'



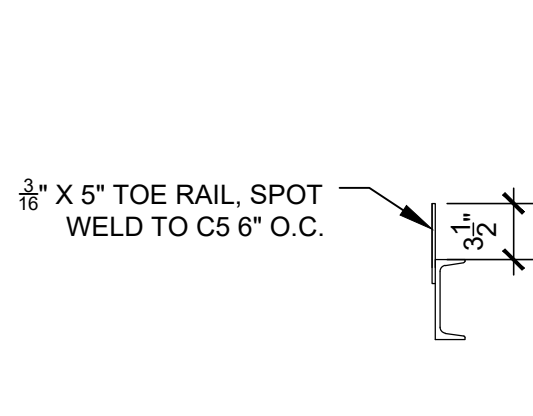
SECTION A



SECTION B



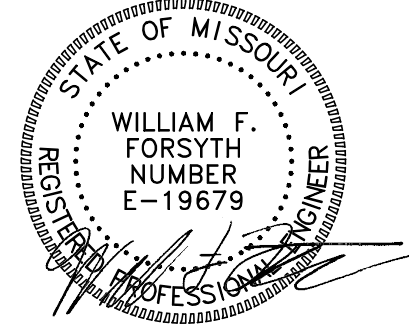
7 ANGLED GRATING PLANK SUPPORT
1" = 1'



8 TOE PLATE DETAIL
1" = 1'

- GENERAL NOTES
- CONTRACTOR TO MECHANICALLY FASTEN BOARDWALK PLANKS, MIN 3 LOCATIONS WITH 1-7/8" BOLT SEAT AND NO. 16 - 3/8" DIA. CARRIAGE BOLT OR SELF TAPPING SCREW, SIZED TO SECURE BOLT SEAT TO PERFORATED DECK PLANKS. ALL COMPONENTS TO BE GALVANIZED.
 - CONTRACTOR TO PROVIDE EDGE SUPPORT FOR ALL CUT ENDS ON OF PERFORATED DECK PLANKS. EDGE SUPPORT TO BE CARRIER PLATES, 13 GAUGE, SIZED PER PLANK DIMENSIONS. ALL COMPONENTS TO BE GALVANIZED.

STATE OF MISSOURI
MIKE L. KEHOE,
GOVERNOR



NAME: WILLIAM FORSYTH
DISCIPLINE: STRUCTURAL ENGINEER
LICENSE NO.: 19679
EXPIRATION DATE: DECEMBER 31, 2025

LANDSCAPE ARCHITECT
**PLANNING
DESIGN
STUDIO**

CERT. OF AUTHORITY: LAC-2006001845
EXPIRATION DATE: DECEMBER 31, 2026
2816 Sutton Boulevard, Suite 1
Saint Louis, Missouri 63143
314-241-3600

STRUCTURAL
FORSYTH ENGINEERING
LICENSE NO.: 001100
EXPIRATION DATE: DECEMBER 31, 2025
1102 South Eighteenth St.
Saint Louis, Missouri 63104

GEOTECHNICAL



KOEHLER ENGINEERING
License NO.:
Expiration Date:
194 Coker Lane
Cape Girardeau, Missouri 63701
573-335-3026

OFFICE OF ADMINISTRATION
DIVISION OF FACILITIES
MANAGEMENT,
DESIGN AND CONSTRUCTION

DEPARTMENT OF
NATURAL RESOURCES
DIVISION OF STATE PARKS

EXTEND METAL BOARDWALK

BIG OAK TREE STATE PARK
13640 MO-102
EAST PRAIRIE, MO 63845

PROJECT # X2407-01
SITE # 5203
FACILITY # 7815203011

REVISION:
DATE:
REVISION:
DATE:
REVISION:
DATE:
ISSUE DATE: 11/26/2025

CAD DWG FILE: X2407-01.5203.7815203011.L-502.DWG
DRAWN BY: CLS
CHECKED BY: NTF/JEN
DESIGNED BY: JEN

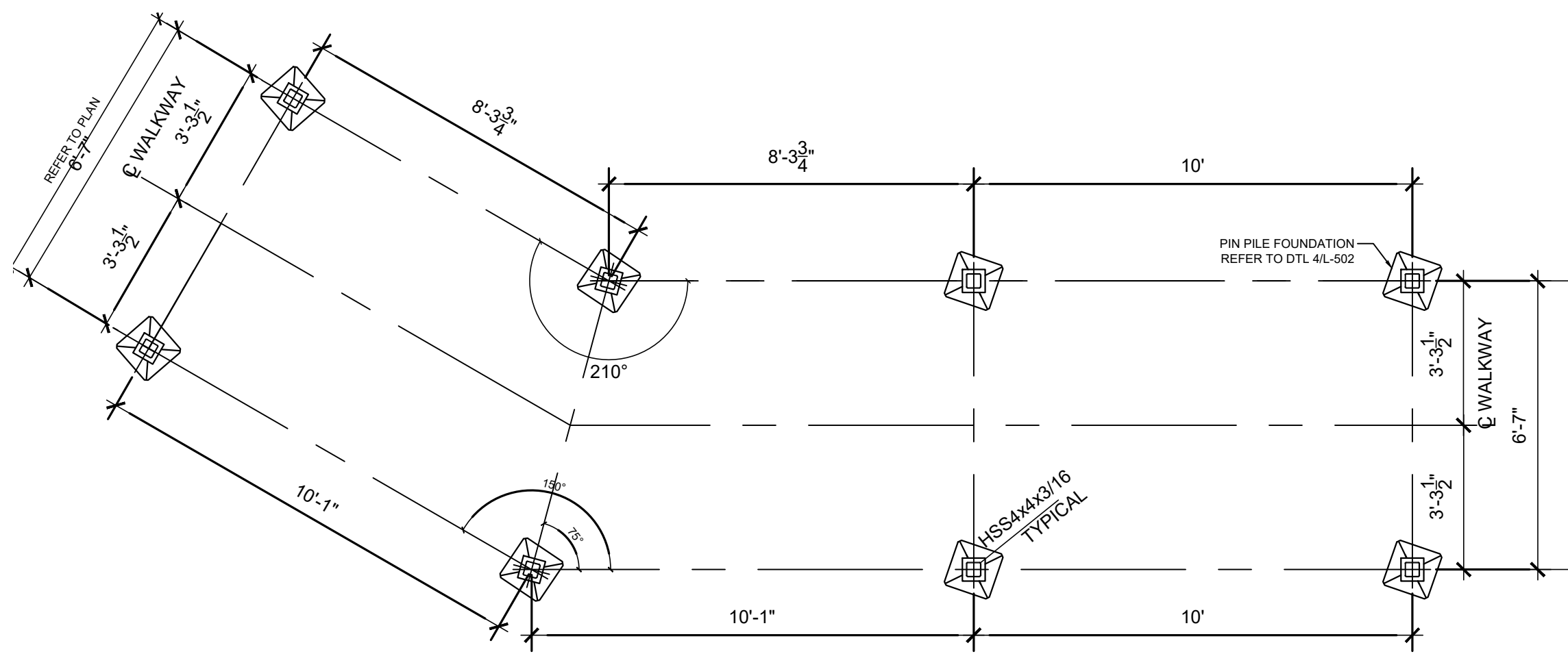
SHEET TITLE:

BOARDWALK
DETAILS

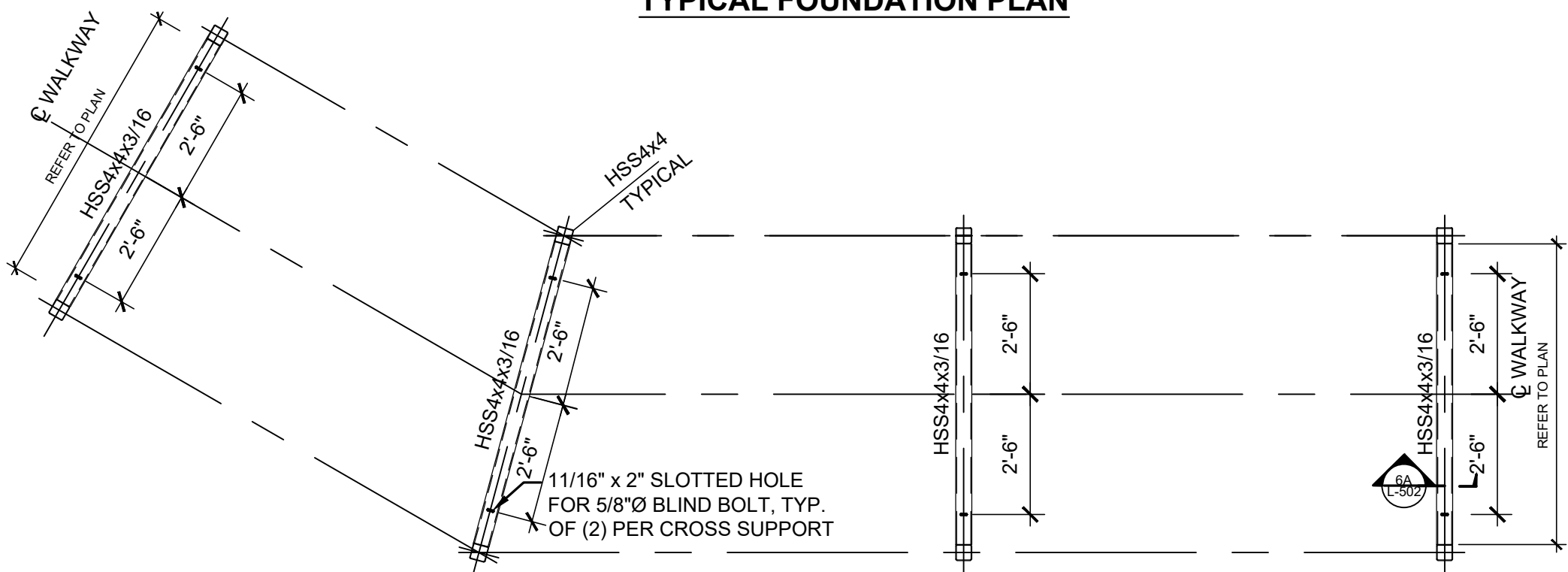
SHEET NUMBER:

L-502

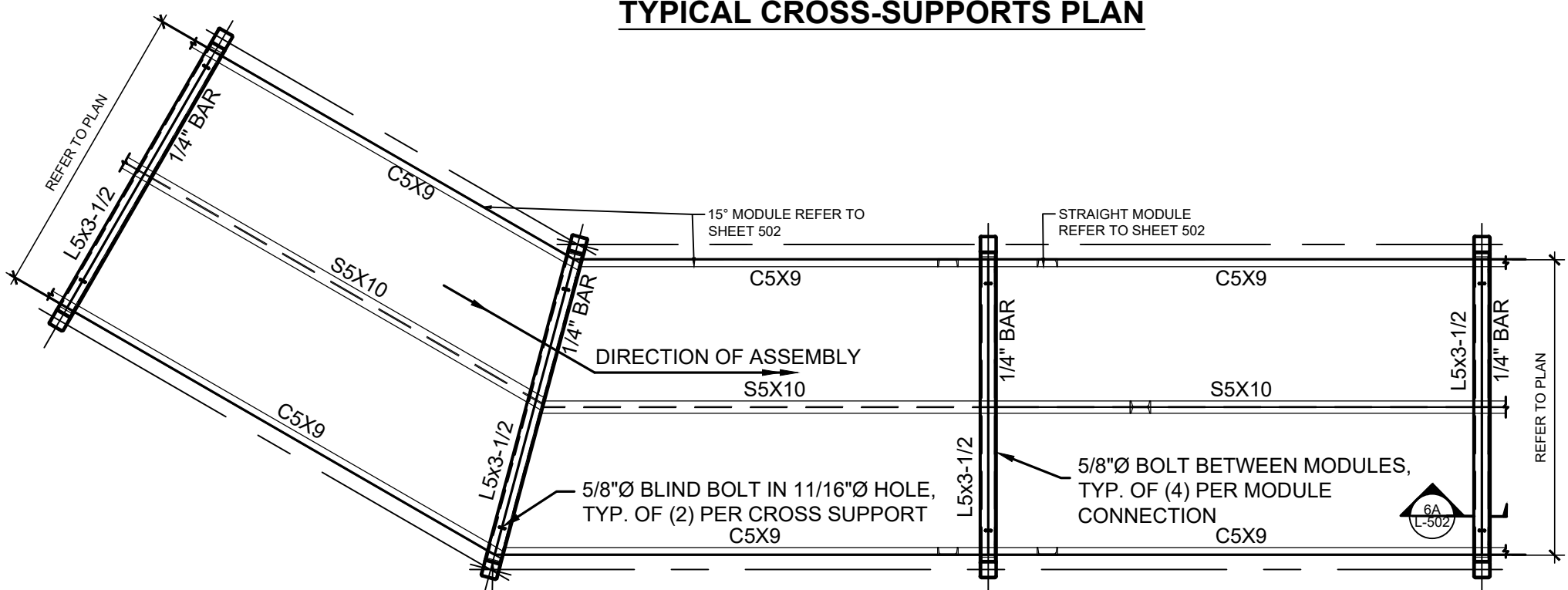
7 OF 9 SHEETS
11/26/2025



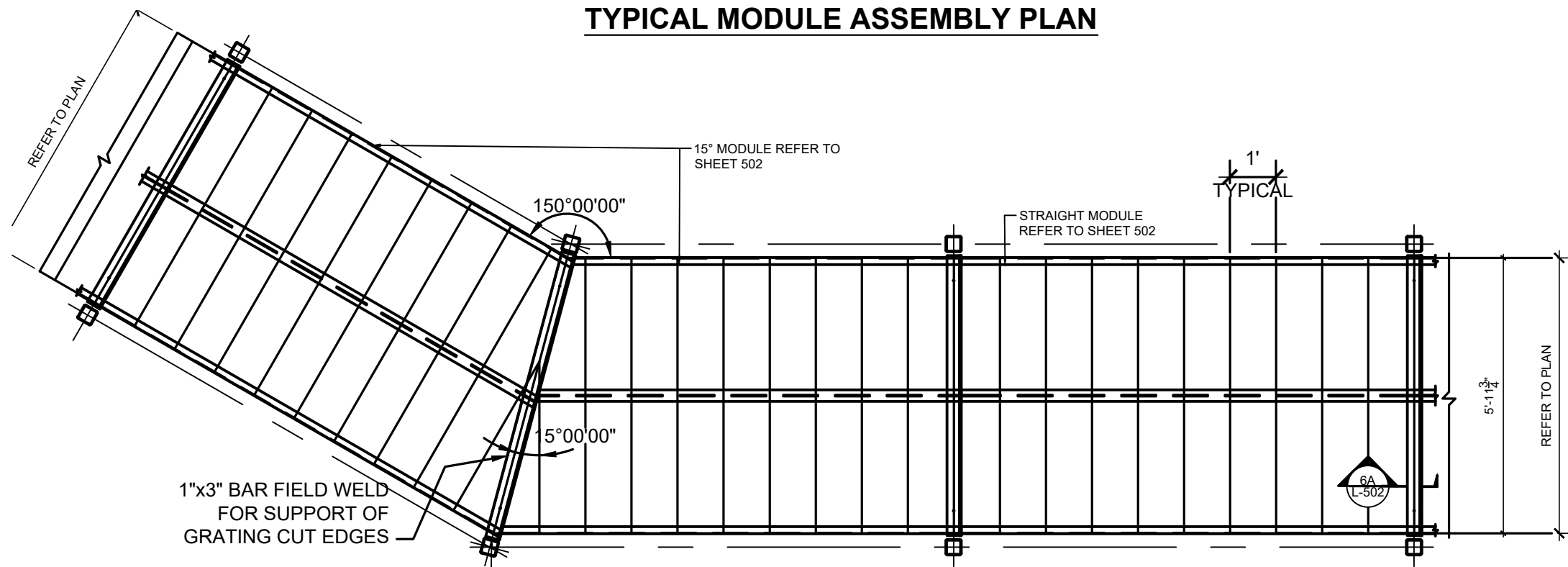
TYPICAL FOUNDATION PLAN



TYPICAL CROSS-SUPPORTS PLAN



TYPICAL MODULE ASSEMBLY PLAN

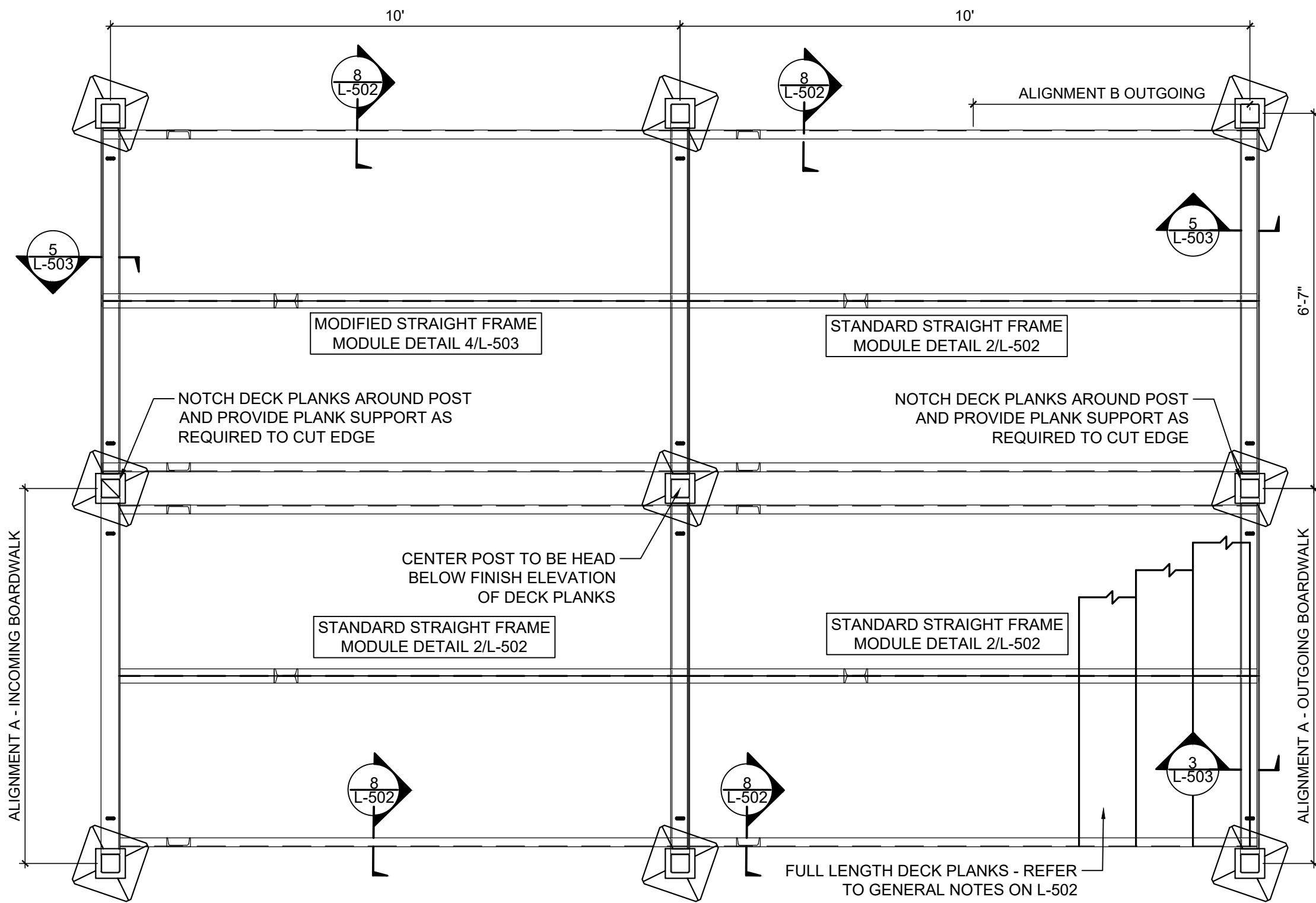


TYPICAL DECKING PLAN

NOTE: 90 DEGREE & 15 DEGREE BOARDWALK UNITS SHOWN, 10 DEGREE BOARDWALK UNITS SIMILAR. REFER TO L-401/402 FOR ACTUAL LAYOUT

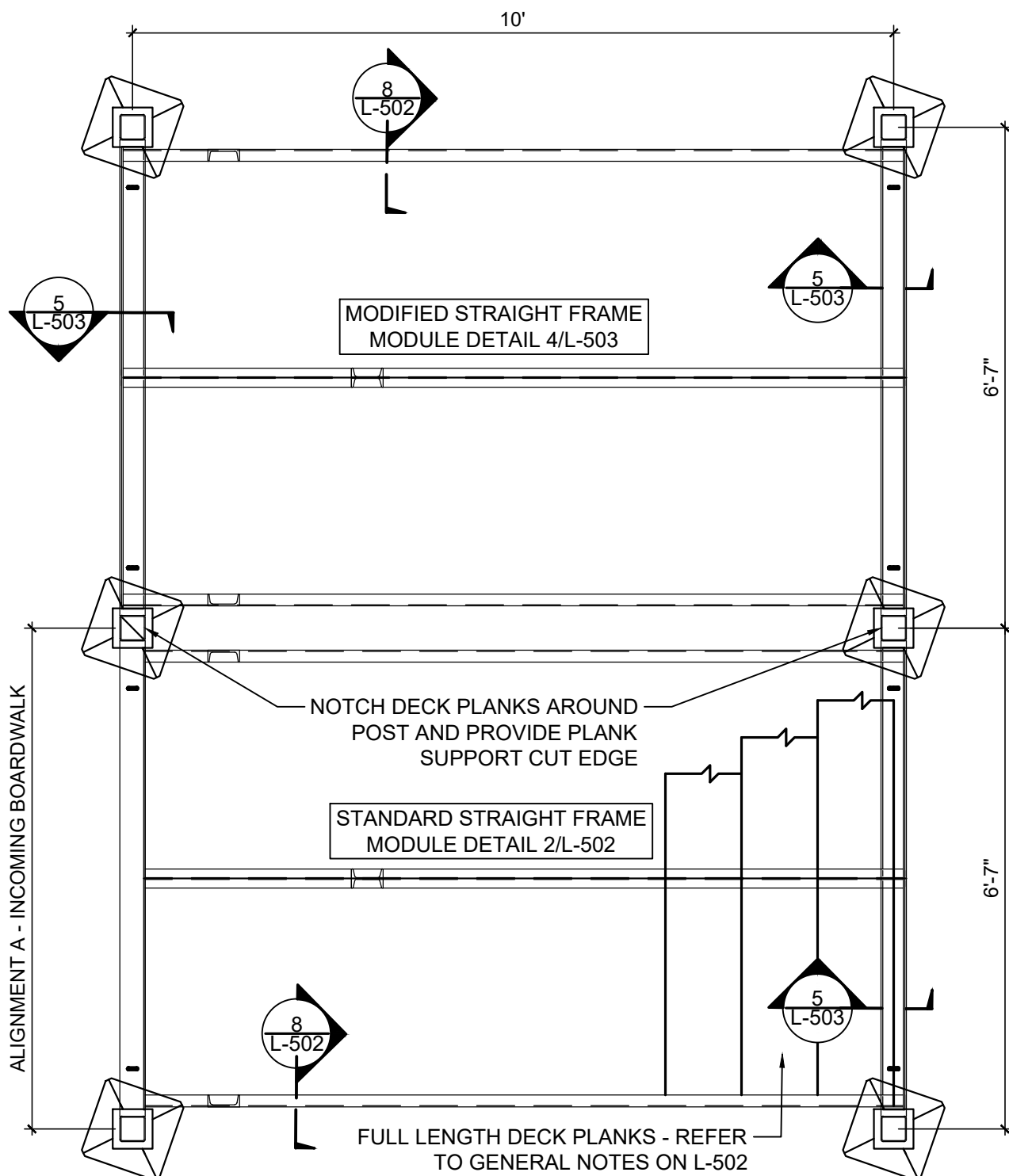
1 WALKWAY ASSEMBLY PLANS

1" = 3'



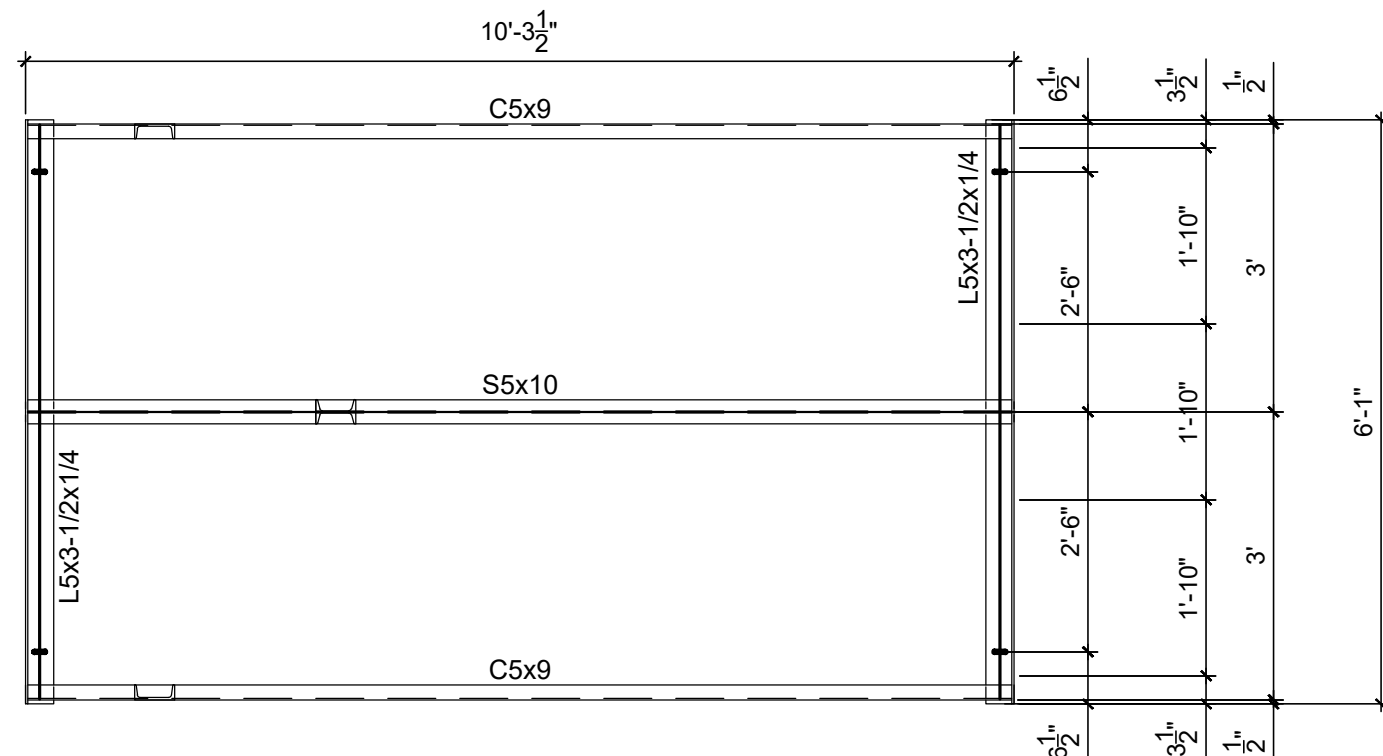
2 ALIGNMENT B OBSERVATION PLATFORM

1" = 2'



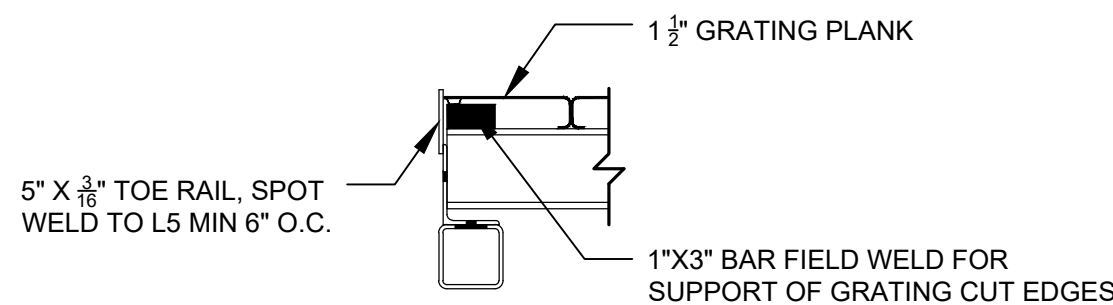
3 ALIGNMENT A OBSERVATION PLATFORM

1" = 2'



4 MODIFIED FRAME MODULE (STRAIGHT)

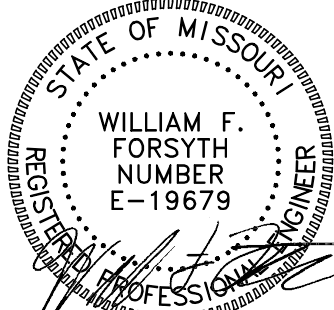
1" = 2'



5 END FRAME DETAIL

1" = 1'

STATE OF MISSOURI
MIKE L. KEHOE,
GOVERNOR



NAME: WILLIAM FORSYTH
DISCIPLINE: STRUCTURAL ENGINEER
LICENSE NO: 19679
EXPIRATION DATE: DECEMBER 31, 2025

LANDSCAPE ARCHITECT
**PLANNING
DESIGN
STUDIO**

CERT. OF AUTHORITY: LAC-2006001845
EXPIRATION DATE: DECEMBER 31, 2026
2816 Sutton Boulevard, Suite 1
Saint Louis, Missouri 63143
314-241-3600

STRUCTURAL
FORSYTH ENGINEERING
LICENSE NO: 001100
EXPIRATION DATE: DECEMBER 31, 2025
1102 South Eighteenth St.
Saint Louis, Missouri 63104

GEOTECHNICAL

KE KOEHLER ENGINEERING
License NO:
Expiration Date:
194 Coker Lane
Cape Girardeau, Missouri 63701
573-335-3026

OFFICE OF ADMINISTRATION
DIVISION OF FACILITIES
MANAGEMENT,
DESIGN AND CONSTRUCTION

DEPARTMENT OF
NATURAL RESOURCES
DIVISION OF STATE PARKS

EXTEND METAL BOARDWALK

BIG OAK TREE STATE PARK
13640 MO-102
EAST PRAIRIE, MO 63845

PROJECT # X2407-01
SITE # 5203
FACILITY # 7815203011

REVISION: _____
DATE: _____
REVISION: _____
DATE: _____
REVISION: _____
DATE: _____
ISSUE DATE: 11/26/2025

CAD DWG FILE: X2407-01.5203.7815203011.L-503.DWG
DRAWN BY: CLS
CHECKED BY: NTF/JEN
DESIGNED BY: JEN

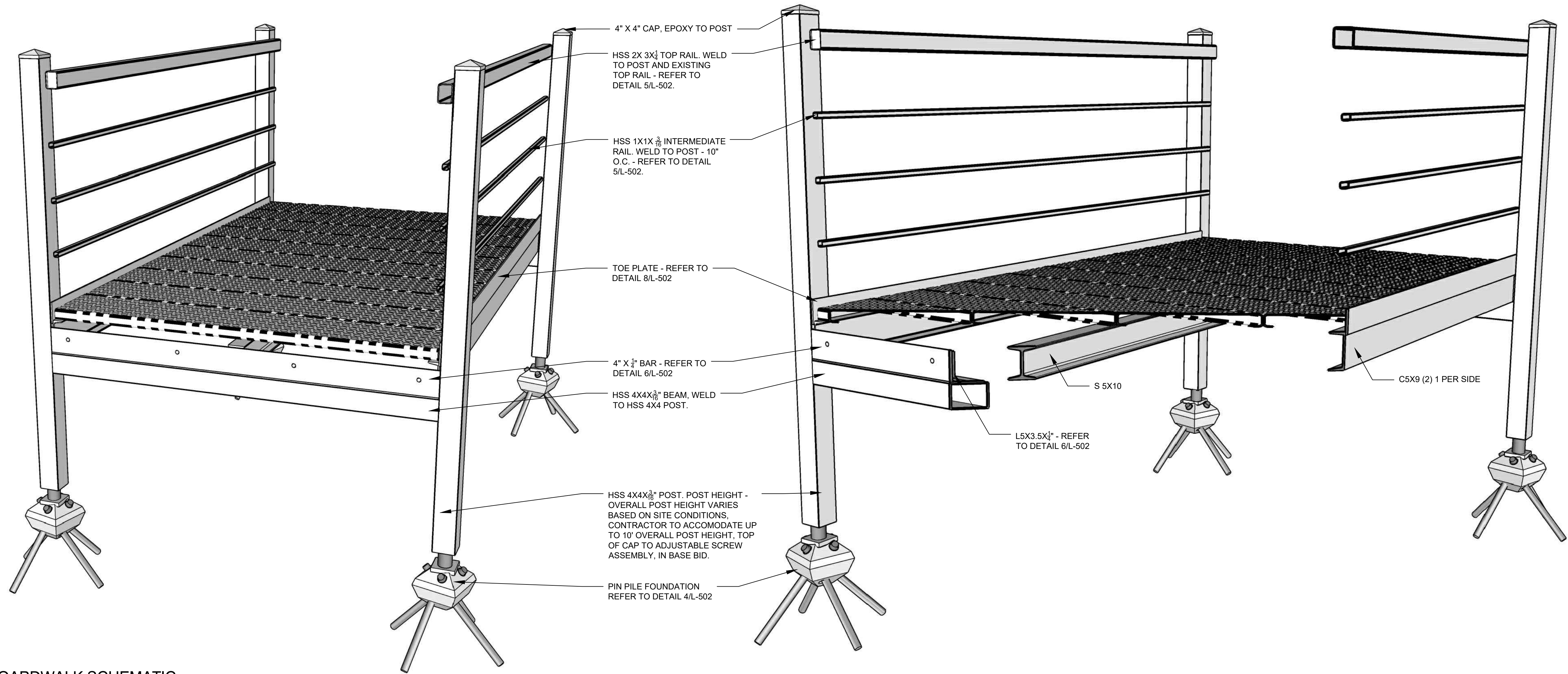
SHEET TITLE:

BOARDWALK
DETAILS -
ASSEMBLY PLAN

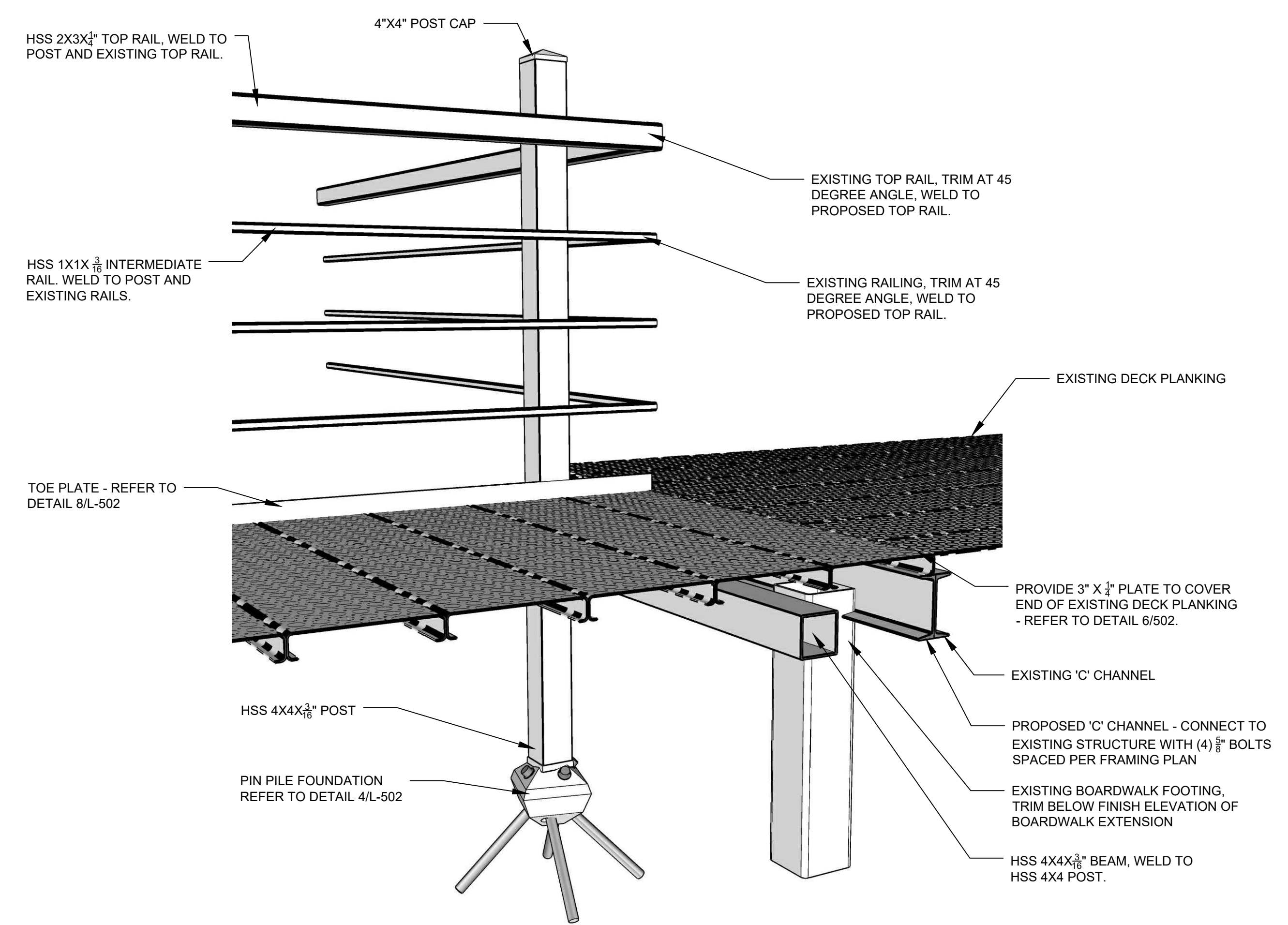
SHEET NUMBER:

L-503

8 OF 9 SHEETS
11/26/2025



1 BOARDWALK SCHEMATIC
NTS



2 EXISTING BOARDWALK CONNECTION SCHEMATIC
NTS