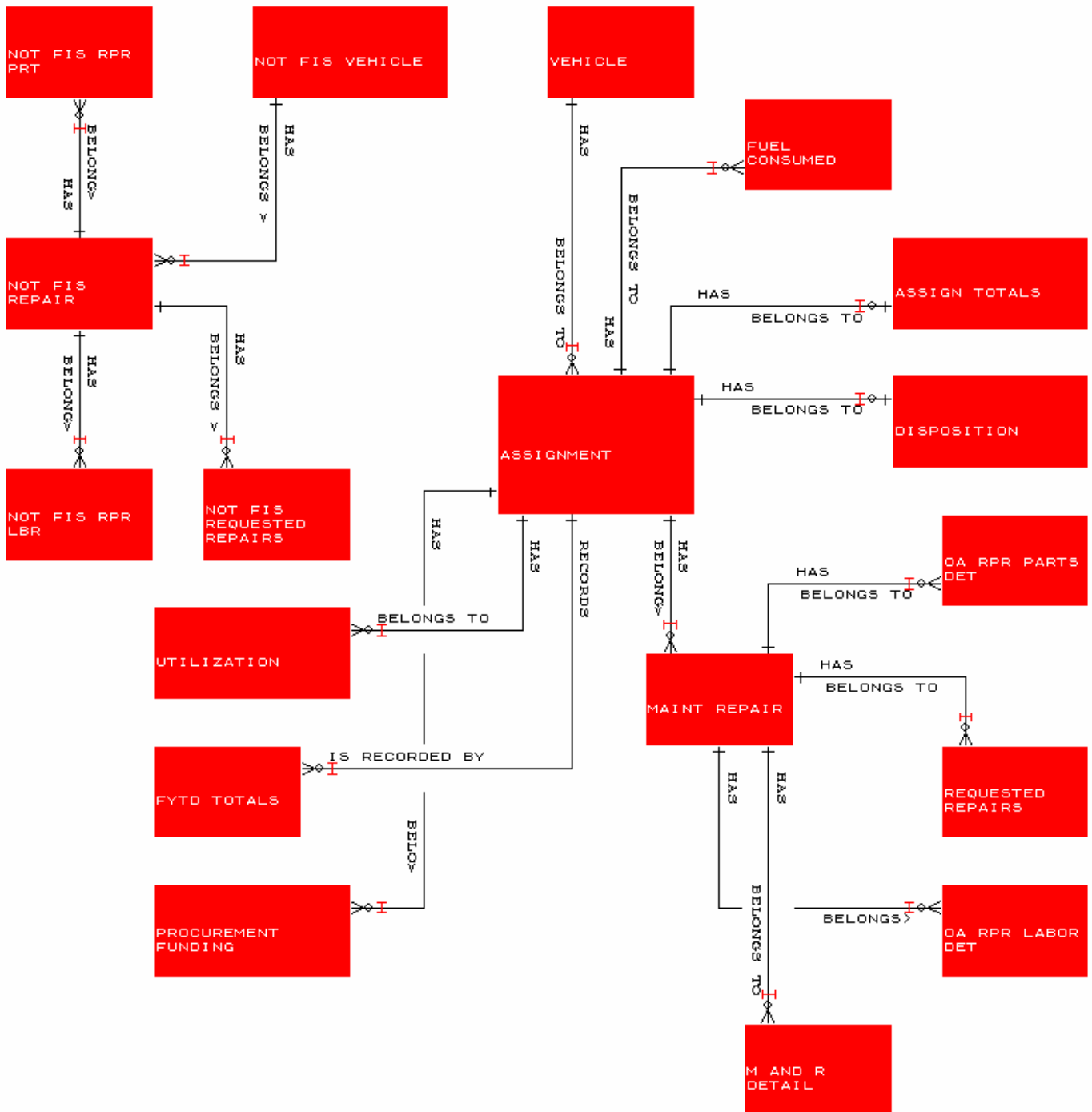
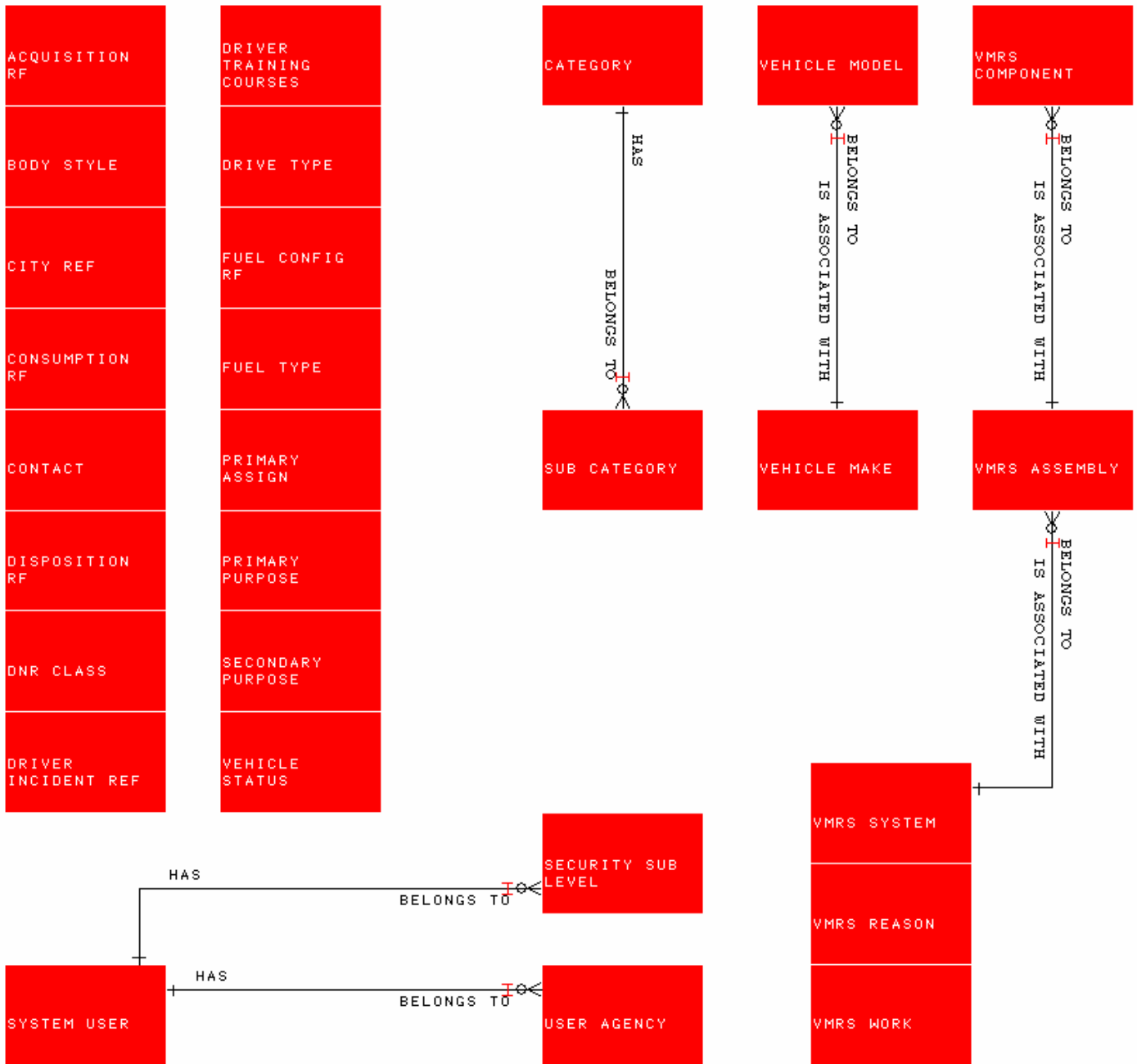


# FLEET INFORMATION SYSTEM DATA MODEL





Type	Name	Format	Length	Optionality	SEQ
Table	+OFS_ACQUISITION_RF				
Column	ACQUISITION_CODE	Char	2	Not Null	
Column	ACQUISITION_DESC	Char	50	Not Null	
Column	LAST_UPDATE_DATE	Date	8	Not Null	
Column	LAST_UPDATE_USER	Char	8	Not Null	
Index (U)	+OFSI011A (Primary)				
Column	ACQUISITION_CODE	Char	2	Not Null	Asc
	+				
	+				
Table	+OFS_ASSIGNMENT				
FK Column	FK_VEHICLE_VIN	Char	17	Not Null	
Column	ASSIGN_DATE	Date	8	Not Null	
Column	AGENCY_NO	Char	3	Not Null	
Column	ORGANIZATION_1	Char	4	Not Null	
Column	ORGANIZATION_2	Char	4	Not Null	
Column	ACQ_DATE	Date	8	Not Null	
Column	ACQ_METHOD	Char	2	Not Null	
Column	ACQ_SOURCE_NAME	Char	30	Not Null	
Column	ACQ_SOURCE_CITY	Char	24	Not Null	
Column	ACQ_COST	Decimal	9,2	Not Null	
Column	ACQ_METER_READING	Decimal	9,2	Not Null	
Column	ASSIGN_ZIP_CODE	Char	5	Not Null	
Column	ASSIGN_ZIP_CODE_EX	Char	4	Not Null	
Column	ASSIGN_CITY_NAME	Char	24	Not Null	
Column	ASSIGN_COUNTY_NAME	Char	20	Not Null	
Column	PRM_ASSIGN_CODE	Char	2	Not Null	
Column	ASSIGN_NAME	Char	30	Not Null	
Column	COMMUTE_IND	Char	1	Not Null	
Column	PRIMARY_PURP_CODE	Char	2	Not Null	
Column	SECONDRY_PURP_CODE	Char	2	Not Null	
Column	STATUS_CODE	Char	2	Not Null	
Column	STATUS_CHANGE_DATE	Date	8	Not Null	
Column	IN_SERVICE_DATE	Date	8	Not Null	
Column	OUT_OF_SERVICE_DAT	Date	8	Not Null	
Column	LICENSE_NO_1	Char	7	Not Null	
Column	LICENSE_NO_2	Char	7	Not Null	
Column	CONFIDENTIAL_PLATE	Char	1	Not Null	
Column	INVENTORY_NO	Char	16	Not Null	
Column	PROJ_FY_VEH_USAGE	Integer	6	Not Null	
Column	SAFETY_INSPECT_DT	Date	8	Not Null	
Column	NX_SAFE_INSPECT_DT	Date	8	Not Null	
Column	EMISSN_INSPECT_DT	Date	8	Not Null	
Column	NX_EMIS_INSPECT_DT	Date	8	Not Null	
Column	FUEL_CARD_NO	Char	25	Not Null	
Column	ASSIGN_NOTES	Char	254	Not Null	
Column	OIL_CHANGE_MONTHS	Char	2	Not Null	
Column	OIL_CHANGE_MILES	Char	6	Not Null	
Column	CUSTOMER_NUMBER	Char	11	Not Null	
Column	PRIMARY_CONTACT	Char	4	Not Null	
Column	SECONDARY_CONTACT	Char	4	Not Null	
Column	DRIVER_NUMBER	Integer	6	Not Null	
Column	PM_USAGE_IND	Char	1	Not Null	
Column	TITLE_NUMBER	Char	8	Not Null	
Column	LAST_UPDATE_DATE	Date	8	Not Null	
Column	LAST_UPDATE_USER	Char	8	Not Null	
RI Constraint	OFSVEHCL OFS_VEHICLE				
Index (U)	+OFSI002A (Primary)				
Column	FK_VEHICLE_VIN	Char	17	Not Null	Asc
Column	ASSIGN_DATE	Date	8	Not Null	Asc
Column	AGENCY_NO	Char	3	Not Null	Asc
Column	ORGANIZATION_1	Char	4	Not Null	Asc

	+								
	+ +								
Table	+OFS_ASSIGN_TOTALS								
FK Column	FK_ASSIGN_VIN	Char	17	Not Null					
FK Column	FK_ASSIGN_DATE	Date	8	Not Null					
FK Column	FK_ASSIGN_AGENCY	Char	3	Not Null					
FK Column	FK_ASSIGN_ORG	Char	4	Not Null					
Column	TOT_REPAIR_COST	Decimal	9,2	Not Null					
Column	TOT_FUEL_COST	Decimal	9,2	Not Null					
Column	TOT_COMMUTE_MILES	Decimal	9,2	Not Null					
Column	TOT_VEHICLE_USAGE	Decimal	9,2	Not Null					
Column	TOT_FUEL_UNITS	Decimal	9,2	Not Null					
Column	TOT_ALT_FUEL_UNITS	Decimal	9,2	Not Null					
Column	TOT_ALT_FUEL_COST	Decimal	9,2	Not Null					
Column	TOT_MAINT_COST	Decimal	9,2	Not Null					
Column	TOT_M_OR_R_COST	Decimal	9,2	Not Null					
Column	TOT_PD_BY_INSURANC	Decimal	9,2	Not Null					
Column	TOT_COST_PER_MILE	Decimal	9,2	Not Null					
Column	LAST_UPDATE_DATE	Date	8	Not Null					
Column	LAST_UPDATE_USER	Char	8	Not Null					
RI Constraint	OFSASGN1 OFS_ASSIGNMENT								
Index (U)	+OFSI003A (Primary)								
Column	FK_ASSIGN_VIN	Char	17	Not Null	Asc				
Column	FK_ASSIGN_DATE	Date	8	Not Null	Asc				
Column	FK_ASSIGN_AGENCY	Char	3	Not Null	Asc				
Column	FK_ASSIGN_ORG	Char	4	Not Null	Asc				
	+ +								
	+ +								
Table	+OFS_BODY_STYLE								
Column	BODY_STYLE_DESC	Char	30	Not Null					
Column	LAST_UPDATE_USER	Char	8	Not Null					
Column	LAST_UPDATE_DATE	Date	8	Not Null					
Index (U)	+OFSI033A (Primary)								
Column	BODY_STYLE_DESC	Char	30	Not Null	Asc				
	+ +								
	+ +								
Table	+OFS_CATEGORY								
Column	VEH_CAT_CODE	Char	2	Not Null					
Column	CAT_SHORT_DESC	Char	40	Not Null					
Column	CAT_LONG_DESC	Char	100	Not Null					
Column	DNR_CLASS_CODE	Char	2	Not Null					
Column	LAST_UPDATE_DATE	Date	8	Not Null					
Column	LAST_UPDATE_USER	Char	8	Not Null					
Index (U)	+OFSI012A (Primary)								
Column	VEH_CAT_CODE	Char	2	Not Null	Asc				
	+ +								
	+ +								
Table	+OFS_CITY_REF								
Column	CITY_NAME	Char	24	Not Null					
Column	PREFERRED_CITY_IND	Char	1	Not Null					
Column	ZIP_CODE	Char	5	Not Null					
Column	COUNTY_NAME	Char	20	Not Null					
Column	COUNTY_REPORT_CITY	Char	20	Not Null					
Column	LAST_UPDATE_DATE	Date	8	Not Null					
Column	LAST_UPDATE_USER	Char	8	Not Null					
Index (U)	+OFSI032A (Primary)								
Column	COUNTY_NAME	Char	20	Not Null	Asc				
Column	CITY_NAME	Char	24	Not Null	Asc				
Column	ZIP_CODE	Char	5	Not Null	Asc				
	+ +								
	+ +								

Table	+OFS_CONSUMPTION_RF				
Column	UOC_SHORT_DESC	Char	20	Not Null	
Column	UOC_LONG_DESC	Char	100	Not Null	
Column	LAST_UPDATE_DATE	Date	8	Not Null	
Column	LAST_UPDATE_USER	Char	8	Not Null	
Index (U)	+OFSI013A (Primary)				
Column	UOC_SHORT_DESC	Char	20	Not Null	Asc
	+				
	+				
Table	+OFS_CONTACT				
Column	CONTACT_CODE	Char	4	Not Null	
Column	LAST_NAME	Char	20	Not Null	
Column	FIRST_NAME	Char	20	Not Null	
Column	CONTACT_ADDRESS_1	Char	30	Not Null	
Column	CONTACT_ADDRESS_2	Char	30	Not Null	
Column	CONTACT_CITY	Char	24	Not Null	
Column	CONTACT_STATE	Char	2	Not Null	
Column	CONTACT_ZIP_CODE	Char	5	Not Null	
Column	CONTACT_ZIP_EXT	Char	4	Not Null	
Column	CONTACT_EMAIL	Char	40	Not Null	
Column	VERIFY_EMAIL	Char	40	Not Null	
Column	CONTACT_AREA_CODE	Char	3	Not Null	
Column	CONTACT_PHONE_NUM	Char	8	Not Null	
Column	CONTACT_FAX_NUM	Char	8	Not Null	
Column	AGENCY_NO	Char	3	Not Null	
Column	FLEET_MANAGER_IND	Char	1	Not Null	
Column	LAST_UPDATE_DATE	Date	8	Not Null	
Column	LAST_UPDATE_USER	Char	8	Not Null	
Index (U)	+OFSI029A (Primary)				
Column	CONTACT_CODE	Char	4	Not Null	Asc
	+				
	+				
Table	+OFS_DISPOSITION				
FK Column	FK_ASSIGN_VIN	Char	17	Not Null	
FK Column	FK_ASSIGN_DATE	Date	8	Not Null	
FK Column	FK_ASSIGN_AGENCY	Char	3	Not Null	
FK Column	FK_ASSIGN_ORG	Char	4	Not Null	
Column	DISPOSAL_CODE	Char	2	Not Null	
Column	DISPOSAL_DATE	Date	8	Not Null	
Column	SURPLUS_DATE	Date	8	Not Null	
Column	ODOMETER_READING	Decimal	9,2	Not Null	
Column	NET_DISP_PROCEEDS	Decimal	9,2	Not Null	
Column	VEHICLE_CREDIT	Decimal	8,2	Not Null	
Column	VHCLE_CREDIT_STATUS	Char	1	Not Null	
Column	CREDIT_STATUS_NOTE	Char	254	Not Null	
Column	LAST_UPDATE_DATE	Date	8	Not Null	
Column	LAST_UPDATE_USER	Char	8	Not Null	
RI Constraint	OFSASGN2 OFS_ASSIGNMENT				
Index (U)	+OFSI010A (Primary)				
Column	FK_ASSIGN_VIN	Char	17	Not Null	Asc
Column	FK_ASSIGN_DATE	Date	8	Not Null	Asc
Column	FK_ASSIGN_AGENCY	Char	3	Not Null	Asc
Column	FK_ASSIGN_ORG	Char	4	Not Null	Asc
	+				
	+				
Table	+OFS_DISPOSITION_RF				
Column	DISPOSITION_CODE	Char	2	Not Null	
Column	DISPOSITION_DESC	Char	50	Not Null	
Column	LAST_UPDATE_USER	Char	8	Not Null	
Column	LAST_UPDATE_DATE	Date	8	Not Null	
Index (U)	+OFSI014A (Primary)				
Column	DISPOSITION_CODE	Char	2	Not Null	Asc

	+							
	+ +							
Table	+OFS_DNR_CLASS							
Column	DNR_CLASS_CODE	Char	2	Not Null				
Column	DNR_SHORT_DESC	Char	10	Not Null				
Column	DNR_LONG_DESC	Char	80	Not Null				
Column	LAST_UPDATE_DATE	Date	8	Not Null				
Column	LAST_UPDATE_USER	Char	8	Not Null				
Index (U)	+OFSI015A (Primary)							
Column	DNR_CLASS_CODE	Char	2	Not Null	Asc			
	+							
	+ +							
Table	+OFS_DRIVE_TYPE							
Column	DRIVE_TYPE_DESC	Char	20	Not Null				
Column	LAST_UPDATE_DATE	Date	8	Not Null				
Column	LAST_UPDATE_USER	Char	8	Not Null				
Index (U)	+OFSI016A (Primary)							
Column	DRIVE_TYPE_DESC	Char	20	Not Null	Asc			
	+							
	+ +							
Table	+OFS_DRVR_INCID_REF							
Column	INCIDENT_TYPE_CODE	Char	2	Not Null				
Column	INCIDENT_DESCRIPTOR	Char	30	Not Null				
Column	LAST_UPDATE_DATE	Date	8	Not Null				
Column	LAST_UPDATE_USER	Char	8	Not Null				
Index (U)	+OFSI081A (Primary)							
Column	INCIDENT_TYPE_CODE	Char	2	Not Null	Asc			
	+							
	+ +							
Table	+OFS_FUEL_CONFIG_RF							
Column	FUEL_SHORT_DESC	Char	15	Not Null				
Column	FUEL_LONG_DESC	Char	254	Not Null				
Column	ALT_FUEL_IND	Char	1	Not Null				
Column	FT_SHORT_DESC	Char	10	Not Null				
Column	FT_CHANGE_IND	Char	1	Not Null				
Column	LAST_UPDATE_DATE	Date	8	Not Null				
Column	LAST_UPDATE_USER	Char	8	Not Null				
Index (U)	+OFSI020A (Primary)							
Column	FUEL_SHORT_DESC	Char	15	Not Null	Asc			
	+							
	+ +							
Table	+OFS_FUEL_CONSUMED							
FK Column	FK_ASSIGN_VIN	Char	17	Not Null				
FK Column	FK_ASSIGN_DATE	Date	8	Not Null				
FK Column	FK_ASSIGN_AGENCY	Char	3	Not Null				
FK Column	FK_ASSIGN_ORG	Char	4	Not Null				
Column	FISCAL_YEAR	Char	4	Not Null				
Column	SEQUENCE_NUM	Smallint	3	Not Null				
Column	PURCHASE_DATE	Date	8	Not Null				
Column	UNITS_PURCHASED	Decimal	6,2	Not Null				
Column	UOC_SHORT_DESC	Char	20	Not Null				
Column	FUEL_COST	Decimal	7,2	Not Null				
Column	FUEL_TYPE_DESC	Char	10	Not Null				
Column	LOADED_BY_INTERFAC	Char	1	Not Null				
Column	LAST_UPDATE_DATE	Date	8	Not Null				
Column	LAST_UPDATE_USER	Char	8	Not Null				
RI Constraint	OFSASGN3 OFS_ASSIGNMENT							
Index (U)	+OFSI004A (Primary)							
Column	FK_ASSIGN_VIN	Char	17	Not Null	Asc			
Column	FK_ASSIGN_DATE	Date	8	Not Null	Asc			
Column	FK_ASSIGN_AGENCY	Char	3	Not Null	Asc			
Column	FK_ASSIGN_ORG	Char	4	Not Null	Asc			

Column	FISCAL_YEAR	Char	4	Not Null	Asc
Column	SEQUENCE_NUM	Smallint	3	Not Null	Asc
	+				
	+				
Table	+OFS_FUEL_TYPE				
Column	FT_SHORT_DESC	Char	10	Not Null	
Column	FT_LONG_DESC	Char	100	Not Null	
Column	QUAL_AS_AF_IND	Char	1	Not Null	
Column	UOC_SHORT_DESC	Char	20	Not Null	
Column	LAST_UPDATE_DATE	Date	8	Not Null	
Column	LAST_UPDATE_USER	Char	8	Not Null	
Index (U)	+OFSI023A (Primary)				
Column	FT_SHORT_DESC	Char	10	Not Null	Asc
	+				
	+				
Table	+OFS_FYTD_TOTALS				
FK Column	FK_ASSIGN_VIN	Char	17	Not Null	
FK Column	FK_ASSIGN_DATE	Date	8	Not Null	
FK Column	FK_ASSIGN_AGENCY	Char	3	Not Null	
FK Column	FK_ASSIGN_ORG	Char	4	Not Null	
Column	FISCAL_YEAR	Char	4	Not Null	
Column	FYTD_FUEL_COST	Decimal	8,2	Not Null	
Column	FYTD_COMMUTE_MILES	Decimal	9,2	Not Null	
Column	FYTD_VEHICLE_USAGE	Decimal	9,2	Not Null	
Column	FYTD_FUEL_UNITS	Decimal	8,2	Not Null	
Column	FYTD_ALT_FUEL_UNIT	Decimal	8,2	Not Null	
Column	FYTD_ALT_FUEL_COST	Decimal	8,2	Not Null	
Column	FYTD_REPAIR_TOTAL	Decimal	8,2	Not Null	
Column	FYTD_MAINT_TOTAL	Decimal	8,2	Not Null	
Column	FYTD_M_AND_R_TOTAL	Decimal	8,2	Not Null	
Column	FYTD_PD_BY_INS_TOT	Decimal	8,2	Not Null	
Column	FYTD_COST_PER_MILE	Decimal	8,2	Not Null	
Column	LAST_UPDATE_DATE	Date	8	Not Null	
Column	LAST_UPDATE_USER	Char	8	Not Null	
RI Constraint	OFSASGN7 OFS_ASSIGNMENT				
Index (U)	+OFSI009A (Primary)				
Column	FK_ASSIGN_VIN	Char	17	Not Null	Asc
Column	FK_ASSIGN_DATE	Date	8	Not Null	Asc
Column	FK_ASSIGN_AGENCY	Char	3	Not Null	Asc
Column	FK_ASSIGN_ORG	Char	4	Not Null	Asc
Column	FISCAL_YEAR	Char	4	Not Null	Asc
	+				
	+				
Table	+OFS_MAINT_REPAIR				
FK Column	FK_ASSIGN_VIN	Char	17	Not Null	
FK Column	FK_ASSIGN_DATE	Date	8	Not Null	
FK Column	FK_ASSIGN_AGENCY	Char	3	Not Null	
FK Column	FK_ASSIGN_ORG	Char	4	Not Null	
Column	FISCAL_YEAR	Char	4	Not Null	
Column	SEQUENCE_NUM	Smallint	3	Not Null	
Column	M_OR_R_DATE	Date	8	Not Null	
Column	M_OR_R_CITY	Char	24	Not Null	
Column	ODOMETER_READING	Decimal	9,2	Not Null	
Column	M_OR_R_NOTES	Char	254	Not Null	
Column	VENDOR_NAME	Char	40	Not Null	
Column	INVOICE_NO	Char	12	Not Null	
Column	MAINT_TOTAL	Decimal	9,2	Not Null	
Column	REPAIR_TOTAL	Decimal	9,2	Not Null	
Column	M_OR_R_TOTAL	Decimal	9,2	Not Null	
Column	INSURANCE_TOTAL	Decimal	9,2	Not Null	
Column	OIL_CHG_IND	Char	1	Not Null	
Column	OA_REPAIR_NUMBER	Integer	7	Not Null	

Column	OA_GARAGE_COMMENTS	Char	254	Not Null	
Column	AGY_PRFRD_RPR_DATE	Date	8	Not Null	
Column	SCHEDULED_RPR_DATE	Date	8	Not Null	
Column	PRJCTED_FINSH_DATE	Date	8	Not Null	
Column	INSURNCE_CLAIM_IND	Char	1	Not Null	
Column	BILL_COMPLETE_IND	Char	1	Not Null	
Column	REPAIR_STATUS	Char	2	Not Null	
Column	STATUS_CHANGE_DATE	Date	8	Not Null	
Column	OUTSIDE_VENDOR_LOC	Char	11	Not Null	
Column	SUBMITTED_BY	Char	8	Not Null	
Column	DATE_SUBMITTED	Date	8	Not Null	
Column	TIME_SUBMITTED	Time	6	Not Null	
Column	TIME_SCHEDULED	Time	6	Not Null	
Column	TOTAL_REPAIR_LABOR	Decimal	7,2	Not Null	
Column	TOTAL_REPAIR_PARTS	Decimal	7,2	Not Null	
Column	TOT_RPR_MATERIALS	Decimal	7,2	Not Null	
Column	TOT_PAINT_MATRIALS	Decimal	7,2	Not Null	
Column	TOT_BODY_SHOP_HRS	Decimal	7,2	Not Null	
Column	TOT_OUTSIDE_LABOR	Decimal	7,2	Not Null	
Column	TOT_OUTSIDE_SURCHRG	Decimal	5,2	Not Null	
Column	POST_BILL_ADJUSTED	Decimal	9,2	Not Null	
Column	MAX_AMNT_WO_APROVL	Decimal	7,2	Not Null	
Column	SHOP_SITE	Char	1	Not Null	
Column	CARRY_OUT_IND	Char	1	Not Null	
Column	SAMII_RE_DOC_NUM	Char	11	Not Null	
Column	SAMII_RE_LINE_NUM	Char	3	Not Null	
Column	SAMII_CUSTOMER_NUM	Char	11	Not Null	
Column	LOADBY_INTRFAC_IND	Char	1	Not Null	
Column	PM1_IND	Char	1	Not Null	
Column	PM2_IND	Char	1	Not Null	
Column	PM3_IND	Char	1	Not Null	
Column	PM4_IND	Char	1	Not Null	
Column	TIRE_DISPOSAL_FEE	Decimal	5,2	Not Null	
Column	CUST_PO_NUMBER	Char	11	Not Null	
Column	LAST_UPDATE_DATE	Date	8	Not Null	
Column	LAST_UPDATE_USER	Char	8	Not Null	
RI Constraint	OFSASGN4 OFS_ASSIGNMENT				
Index (U)	+I0000016 (Primary)				
Column	FK_ASSIGN_VIN	Char	17	Not Null	Asc
Column	FK_ASSIGN_DATE	Date	8	Not Null	Asc
Column	FK_ASSIGN_AGENCY	Char	3	Not Null	Asc
Column	FK_ASSIGN_ORG	Char	4	Not Null	Asc
Column	SEQUENCE_NUM	Smallint	3	Not Null	Asc
Column	FISCAL_YEAR	Char	4	Not Null	Asc
	+				
Index	+OFS00100				
Column	OA_REPAIR_NUMBER	Integer	7	Not Null	Asc
	+				
	+				
Table	+OFS_M_AND_R_DETAIL				
FK Column	FK_ASSIGN_VIN	Char	17	Not Null	
FK Column	FK_ASSIGN_DATE	Date	8	Not Null	
FK Column	FK_ASSIGN_AGENCY	Char	3	Not Null	
FK Column	FK_ASSIGN_ORG	Char	4	Not Null	
FK Column	FK_MAINT_FY	Char	4	Not Null	
FK Column	FK_MAINT_SEQ_NUM	Smallint	3	Not Null	
Column	SEQUENCE_NUM	Smallint	3	Not Null	
Column	VMRS_WORK_CODE	Char	2	Not Null	
Column	VMRS_SYSTEM_CODE	Char	3	Not Null	
Column	VMRS_ASSEMBLY_CODE	Char	3	Not Null	
Column	VMRS_COMPNENT_CODE	Char	3	Not Null	
Column	VMRS_REASON_CODE	Char	2	Not Null	



Column	DETAIL_NOTES	Char	100	Not Null	
Column	LABOR_DETAIL_COST	Decimal	7,2	Not Null	
Column	PART_DETAIL_COST	Decimal	7,2	Not Null	
Column	TOTAL_DETAIL_COST	Decimal	8,2	Not Null	
Column	LAST_UPDATE_DATE	Date	8	Not Null	
Column	LAST_UPDATE_USER	Char	8	Not Null	
RI Constraint	OFSMAINT OFS_MAINT_REPAIR				
Index (U)	+I0000098 (Primary)				
Column	FK_ASSIGN_VIN	Char	17	Not Null	Asc
Column	FK_ASSIGN_DATE	Date	8	Not Null	Asc
Column	FK_ASSIGN_AGENCY	Char	3	Not Null	Asc
Column	FK_ASSIGN_ORG	Char	4	Not Null	Asc
Column	FK_MAINT_FY	Char	4	Not Null	Asc
Column	FK_MAINT_SEQ_NUM	Smallint	3	Not Null	Asc
Column	SEQUENCE_NUM	Smallint	3	Not Null	Asc
	+				
	+				
Table	+OFS_NOTFIS_RPR_LBR				
FK Column	FK_NOT_FIS_VEH_VIN	Char	17	Not Null	
FK Column	FK_NOT_FIS_RPR_NUM	Integer	7	Not Null	
Column	SEQUENCE_NUMBER	Smallint	3	Not Null	
Column	INVOICE_NUMBER	Char	10	Not Null	
Column	INVOICE_DATE	Date	8	Not Null	
Column	LABOR_CODE	Char	6	Not Null	
Column	LABOR_HOURS	Decimal	5,2	Not Null	
Column	LABOR_DETAIL_TOTAL	Decimal	7,2	Not Null	
Column	OUTSIDE_LABOR_TOT	Decimal	7,2	Not Null	
Column	OUTSIDE_LBR_SRCHRG	Decimal	5,2	Not Null	
Column	WORK_PERFORMED_BY	Char	30	Not Null	
Column	LAST_UPDATE_DATE	Date	8	Not Null	
Column	LAST_UPDATE_USER	Char	8	Not Null	
RI Constraint	<No Name> OFS_NOT_FIS_REPAIR				
Index (U)	+I0000245 (Primary)				
Column	FK_NOT_FIS_VEH_VIN	Char	17	Not Null	Asc
Column	FK_NOT_FIS_RPR_NUM	Integer	7	Not Null	Asc
Column	SEQUENCE_NUMBER	Smallint	3	Not Null	Asc
	+				
	+				
Table	+OFS_NOTFIS_RPR_PRT				
FK Column	FK_NOT_FIS_VEH_VIN	Char	17	Not Null	
FK Column	FK_NOT_FIS_RPR_NUM	Integer	7	Not Null	
Column	SEQUENCE_NUMBER	Smallint	3	Not Null	
Column	INVOICE_NUMBER	Char	10	Not Null	
Column	INVOICE_DATE	Date	8	Not Null	
Column	PART_NUMBER	Char	15	Not Null	
Column	PART_DESCRIPTION	Char	30	Not Null	
Column	PART_QUANTITY	Smallint	3	Not Null	
Column	PART_COST_PER_UNIT	Decimal	7,2	Not Null	
Column	PART_DETAIL_TOTAL	Decimal	7,2	Not Null	
Column	AGCY_COST_PER_UNIT	Decimal	7,2	Not Null	
Column	LAST_UPDATE_DATE	Date	8	Not Null	
Column	LAST_UPDATE_USER	Char	8	Not Null	
RI Constraint	<No Name> OFS_NOT_FIS_REPAIR				
Index (U)	+I0000196 (Primary)				
Column	FK_NOT_FIS_VEH_VIN	Char	17	Not Null	Asc
Column	FK_NOT_FIS_RPR_NUM	Integer	7	Not Null	Asc
Column	SEQUENCE_NUMBER	Smallint	3	Not Null	Asc
	+				
	+				
Table	+OFS_NOTFIS_RQSTRPR				
FK Column	FK_NOT_FIS_VEH_VIN	Char	17	Not Null	
FK Column	FK_NOT_FIS_RPR_NUM	Integer	7	Not Null	

Column	LABOR_CODE	Char	6	Not Null	
Column	LAST_UPDATE_DATE	Date	8	Not Null	
Column	LAST_UPDATE_USER	Char	8	Not Null	
RI Constraint	<No Name> OFS_NOT_FIS_REPAIR				
Index (U)	+I0000235 (Primary)				
Column	FK_NOT_FIS_VEH_VIN	Char	17	Not Null	Asc
Column	FK_NOT_FIS_RPR_NUM	Integer	7	Not Null	Asc
Column	LABOR_CODE	Char	6	Not Null	Asc
	+				
Table	+OFS_NOT_FIS_REPAIR				
FK Column	FK_NOT_FIS_VEH_VIN	Char	17	Not Null	
Column	REPAIR_NUMBER	Integer	7	Not Null	
Column	AGY_PRFRD_RPR_DATE	Date	8	Not Null	
Column	SCHEDULED_RPR_DATE	Date	8	Not Null	
Column	PRJCTED_FINSH_DATE	Date	8	Not Null	
Column	INSURNCE_CLAIM_IND	Char	1	Not Null	
Column	BILL_COMPLETE_IND	Char	1	Not Null	
Column	REPAIR_STATUS	Char	2	Not Null	
Column	STATUS_CHANGE_DATE	Date	8	Not Null	
Column	OUTSIDE_VENDOR_LOC	Char	11	Not Null	
Column	SUBMITTED_BY	Char	8	Not Null	
Column	M_OR_R_NOTES	Char	254	Not Null	
Column	OA_GARAGE_COMMENTS	Char	254	Not Null	
Column	TIME_SCHEDULED	Time	6	Not Null	
Column	DATE_SUBMITTED	Date	8	Not Null	
Column	TIME_SUBMITTED	Time	6	Not Null	
Column	TOTAL_REPAIR_LABOR	Decimal	7,2	Not Null	
Column	TOTAL_REPAIR_PARTS	Decimal	7,2	Not Null	
Column	TOT_RPR_MATERIALS	Decimal	7,2	Not Null	
Column	TOT_PAINT_MATRIALS	Decimal	7,2	Not Null	
Column	TOT_BODY_SHOP_HRS	Decimal	7,2	Not Null	
Column	TOT_OUTSIDE_LABOR	Decimal	7,2	Not Null	
Column	TOT_OUTSIDE_SURCHR	Decimal	5,2	Not Null	
Column	TOTAL_INSURANCE	Decimal	9,2	Not Null	
Column	M_OR_R_TOTAL	Decimal	9,2	Not Null	
Column	POST_BILL_ADJUSTED	Decimal	9,2	Not Null	
Column	MAX_AMNT_WO_APROVL	Decimal	7,2	Not Null	
Column	ODOMETER_READING	Decimal	9,2	Not Null	
Column	SHOP_SITE	Char	1	Not Null	
Column	CARRY_OUT_IND	Char	1	Not Null	
Column	NOT_IN_FIS_IND	Char	1	Not Null	
Column	SAMII_RE_DOC_NUM	Char	11	Not Null	
Column	SAMII_RE_LINE_NUM	Char	3	Not Null	
Column	SAMII_CUSTOMER_NUM	Char	11	Not Null	
Column	TIRE_DISPOSAL_FEE	Decimal	5,2	Not Null	
Column	CUST_PO_NUMBER	Char	11	Not Null	
Column	LAST_UPDATE_DATE	Date	8	Not Null	
Column	LAST_UPDATE_USER	Char	8	Not Null	
RI Constraint	<No Name> OFS_NOT_FIS_VEHICL				
Index (U)	+I0000244 (Primary)				
Column	FK_NOT_FIS_VEH_VIN	Char	17	Not Null	Asc
Column	REPAIR_NUMBER	Integer	7	Not Null	Asc
	+				
Table	+OFS_NOT_FIS_VEHICL				
Column	VIN_OR_ID	Char	17	Not Null	
Column	LICENSE_NUMBER	Char	7	Not Null	
Column	INVENTORY_NUMBER	Char	16	Not Null	
Column	MAKE_DESC	Char	30	Not Null	
Column	MODEL_DESC	Char	30	Not Null	
Column	VEHICLE_YEAR	Char	4	Not Null	

Column	AGENCY	Char	3	Not Null	
Column	ORGANIZATION	Char	4	Not Null	
Column	CUSTOMER_NUMBER	Char	11	Not Null	
Column	CONTACT_1	Char	40	Not Null	
Column	CONTACT_2	Char	40	Not Null	
Column	CONTACT_AREA_CODE	Char	3	Not Null	
Column	CONTACT_PHONE_NUM	Char	8	Not Null	
Column	CONTACT_FAX_NUM	Char	8	Not Null	
Column	CONTACT_EMAIL	Char	40	Not Null	
Column	COMMENTS	Char	254	Not Null	
Column	LAST_OIL_CHG_DATE	Date	8	Not Null	
Column	LAST_OIL_CHG_MILES	Decimal	9,2	Not Null	
Column	LAST_UPDATE_DATE	Date	8	Not Null	
Column	LAST_UPDATE_USER	Char	8	Not Null	
Index (U)	+I0010235 (Primary)				
Column	VIN_OR_ID	Char	17	Not Null	Asc
	+				
	+ +				
Table	+OFS_OA_RPR_LBR_DET				
FK Column	FK_ASSIGN_VIN	Char	17	Not Null	
FK Column	FK_ASSIGN_DATE	Date	8	Not Null	
FK Column	FK_ASSIGN_AGENCY	Char	3	Not Null	
FK Column	FK_ASSIGN_ORG	Char	4	Not Null	
FK Column	FK_MAINT_RPR_FY	Char	4	Not Null	
FK Column	FK_MAINT_RPR_SEQ_N	Smallint	3	Not Null	
Column	SEQUENCE_NUMBER	Smallint	3	Not Null	
Column	INVOICE_NUMBER	Char	10	Not Null	
Column	INVOICE_DATE	Date	8	Not Null	
Column	LABOR_CODE	Char	6	Not Null	
Column	LABOR_HOURS	Decimal	5,2	Not Null	
Column	LABOR_DETAIL_TOTAL	Decimal	7,2	Not Null	
Column	OUTSIDE_LABOR_TOT	Decimal	7,2	Not Null	
Column	OUTSIDE_LBR_SRCHRG	Decimal	5,2	Not Null	
Column	WORK_PERFORMED_BY	Char	30	Not Null	
Column	LAST_UPDATE_DATE	Date	8	Not Null	
Column	LAST_UPDATE_USER	Char	8	Not Null	
RI Constraint	<No Name> OFS_MAINT_REPAIR				
Index (U)	+I0000150 (Primary)				
Column	FK_ASSIGN_VIN	Char	17	Not Null	Asc
Column	FK_ASSIGN_DATE	Date	8	Not Null	Asc
Column	FK_ASSIGN_AGENCY	Char	3	Not Null	Asc
Column	FK_ASSIGN_ORG	Char	4	Not Null	Asc
Column	FK_MAINT_RPR_FY	Char	4	Not Null	Asc
Column	FK_MAINT_RPR_SEQ_N	Smallint	3	Not Null	Asc
Column	SEQUENCE_NUMBER	Smallint	3	Not Null	Asc
	+				
	+ +				
Table	+OFS_OA_RPR_PRT_DET				
FK Column	FK_ASSIGN_VIN	Char	17	Not Null	
FK Column	FK_ASSIGN_DATE	Date	8	Not Null	
FK Column	FK_ASSIGN_AGENCY	Char	3	Not Null	
FK Column	FK_ASSIGN_ORG	Char	4	Not Null	
FK Column	FK_MAINT_RPR_FY	Char	4	Not Null	
FK Column	FK_MAINT_RPR_SEQ_N	Smallint	3	Not Null	
Column	SEQUENCE_NUMBER	Smallint	3	Not Null	
Column	INVOICE_NUMBER	Char	10	Not Null	
Column	INVOICE_DATE	Date	8	Not Null	
Column	PART_NUMBER	Char	15	Not Null	
Column	PART_DESCRIPTION	Char	30	Not Null	
Column	PART_QUANTITY	Smallint	3	Not Null	
Column	PART_PRICE	Decimal	8,2	Not Null	
Column	PART_DETAIL_TOTAL	Decimal	8,2	Not Null	

Column	AGENCY_COST	Decimal	8,2	Not Null	
Column	LAST_UPDATE_DATE	Date	8	Not Null	
Column	LAST_UPDATE_USER	Char	8	Not Null	
RI Constraint	<No Name> OFS_MAINT_REPAIR				
Index (U)	+I0000152 (Primary)				
Column	FK_ASSIGN_VIN	Char	17	Not Null	Asc
Column	FK_ASSIGN_DATE	Date	8	Not Null	Asc
Column	FK_ASSIGN_AGENCY	Char	3	Not Null	Asc
Column	FK_ASSIGN_ORG	Char	4	Not Null	Asc
Column	FK_MAINT_RPR_FY	Char	4	Not Null	Asc
Column	FK_MAINT_RPR_SEQ_N	Smallint	3	Not Null	Asc
Column	SEQUENCE_NUMBER	Smallint	3	Not Null	Asc
	+				
	+				
Table	+OFS_PRIMARY_ASSIGN				
Column	PRIM_ASSIGN_CODE	Char	2	Not Null	
Column	PRIM_ASSIGN_DESC	Char	30	Not Null	
Column	LAST_UPDATE_USER	Char	8	Not Null	
Column	LAST_UPDATE_DATE	Date	8	Not Null	
Index (U)	+I0000076 (Primary)				
Column	PRIM_ASSIGN_CODE	Char	2	Not Null	Asc
	+				
	+				
Table	+OFS_PRIMARY_PURPOS				
Column	PRIM_PURPOSE_CODE	Char	2	Not Null	
Column	PRIM_SHORT_DESC	Char	30	Not Null	
Column	PRIM_LONG_DESC	Char	254	Not Null	
Column	LAST_UPDATE_USER	Char	8	Not Null	
Column	LAST_UPDATE_DATE	Date	8	Not Null	
Index (U)	+I0000051 (Primary)				
Column	PRIM_PURPOSE_CODE	Char	2	Not Null	Asc
	+				
	+				
Table	+OFS_PROC_FUNDING				
FK Column	FK_ASSIGN_VIN	Char	17	Not Null	
FK Column	FK_ASSIGN_DATE	Date	8	Not Null	
FK Column	FK_ASSIGN_AGENCY	Char	3	Not Null	
FK Column	FK_ASSIGN_ORG	Char	4	Not Null	
Column	PF_SOURCE	Char	4	Not Null	
Column	PF_AMOUNT	Decimal	9,2	Not Null	
Column	LAST_UPDATE_DATE	Date	8	Not Null	
Column	LAST_UPDATE_USER	Char	8	Not Null	
RI Constraint	OFSASGN5 OFS_ASSIGNMENT				
Index (U)	+I0000128 (Primary)				
Column	FK_ASSIGN_VIN	Char	17	Not Null	Asc
Column	FK_ASSIGN_DATE	Date	8	Not Null	Asc
Column	FK_ASSIGN_ORG	Char	4	Not Null	Asc
Column	FK_ASSIGN_AGENCY	Char	3	Not Null	Asc
Column	PF_SOURCE	Char	4	Not Null	Asc
	+				
	+				
Table	+OFS_REQSTED_REPAIR				
FK Column	FK_ASSIGN_VIN	Char	17	Not Null	
FK Column	FK_ASSIGN_DATE	Date	8	Not Null	
FK Column	FK_ASSIGN_AGENCY	Char	3	Not Null	
FK Column	FK_ASSIGN_ORG	Char	4	Not Null	
FK Column	FK_MAINT_RPR_FY	Char	4	Not Null	
FK Column	FK_MAINT_RPR_SEQ_N	Smallint	3	Not Null	
Column	LABOR_CODE	Char	6	Not Null	
Column	LAST_UPDATE_DATE	Date	8	Not Null	
Column	LAST_UPDATE_USER	Char	8	Not Null	
RI Constraint	<No Name> OFS_MAINT_REPAIR				

Index (U)	+I0000170	(Primary)				
Column	FK_ASSIGN_VIN		Char	17	Not Null	Asc
Column	FK_ASSIGN_DATE		Date	8	Not Null	Asc
Column	FK_ASSIGN_AGENCY		Char	3	Not Null	Asc
Column	FK_ASSIGN_ORG		Char	4	Not Null	Asc
Column	FK_MAINT_RPR_FY		Char	4	Not Null	Asc
Column	FK_MAINT_RPR_SEQ_N		Smallint	3	Not Null	Asc
Column	LABOR_CODE		Char	6	Not Null	Asc
	+					
Table	+OFS_SECOND_PURPOSE					
Column	SECOND_PURP_CODE		Char	2	Not Null	
Column	SECOND_SHORT_DESC		Char	45	Not Null	
Column	SECOND_LONG_DESC		Char	254	Not Null	
Column	PRIM_PURPOSE_CODE		Char	2	Not Null	
Column	LAST_UPDATE_USER		Char	8	Not Null	
Column	LAST_UPDATE_DATE		Date	8	Not Null	
Index (U)	+I0000049	(Primary)				
Column	SECOND_PURP_CODE		Char	2	Not Null	Asc
	+					
Table	+OFS_SECRTY_SUB_LVL					
FK Column	FK_SYS_USER_CODE		Char	8	Not Null	
Column	SECURITY_SUB_LEVEL		Char	1	Not Null	
Column	LAST_UPDATE_DATE		Date	8	Not Null	
Column	LAST_UPDATE_USER		Char	8	Not Null	
RI Constraint	<No Name>	OFS_SYSTEM_USER				
Index (U)	+I0000191	(Primary)				
Column	FK_SYS_USER_CODE		Char	8	Not Null	Asc
Column	SECURITY_SUB_LEVEL		Char	1	Not Null	Asc
	+					
Table	+OFS_SUB_CATEGORY					
FK Column	FK_VEH_CAT_CODE		Char	2	Not Null	
Column	SUB_CAT_CODE		Char	2	Not Null	
Column	SUB_CAT_SHORT_DESC		Char	50	Not Null	
Column	SUB_CAT_LONG_DESC		Char	200	Not Null	
Column	DNR_EXEMPT_IND		Char	1	Not Null	
Column	LAST_UPDATE_DATE		Date	8	Not Null	
Column	LAST_UPDATE_USER		Char	8	Not Null	
RI Constraint	OFSCAT	OFS_CATEGORY				
Index (U)	+I0000035	(Primary)				
Column	FK_VEH_CAT_CODE		Char	2	Not Null	Asc
Column	SUB_CAT_CODE		Char	2	Not Null	Asc
	+					
Table	+OFS_SYSTEM_USER					
Column	USER_CODE		Char	8	Not Null	
Column	FIRST_NAME		Char	20	Not Null	
Column	LAST_NAME		Char	20	Not Null	
Column	SECURITY_LEVEL		Char	2	Not Null	
Column	LAST_UPDATE_DATE		Date	8	Not Null	
Column	LAST_UPDATE_USER		Char	8	Not Null	
Index (U)	+I0000066	(Primary)				
Column	USER_CODE		Char	8	Not Null	Asc
	+					
Table	+OFS_TRAIN_COURSES					
Column	COURSE_CODE		Char	3	Not Null	
Column	COURSE_NAME		Char	40	Not Null	
Column	LAST_UPDATE_DATE		Date	8	Not Null	
Column	LAST_UPDATE_USER		Char	8	Not Null	

Index (U)	+I0000276 (Primary)				
Column	COURSE_CODE	Char	3	Not Null	Asc
	+				
Table	+OFS_USER_AGENCY				
Column	AGENCY	Char	3	Not Null	
Column	ORGANIZATION	Char	4	Not Null	
Column	REPORTING_ORG_IND	Char	1	Not Null	
Column	LAST_UPDATE_DATE	Date	8	Not Null	
Column	LAST_UPDATE_USER	Char	8	Not Null	
FK Column	FK_SYSTEM_USER_CD	Char	8	Not Null	
RI Constraint	OFSSYSTU OFS_SYSTEM_USER				
Index (U)	+I0000073 (Primary)				
Column	FK_SYSTEM_USER_CD	Char	8	Not Null	Asc
Column	ORGANIZATION	Char	4	Not Null	Asc
Column	AGENCY	Char	3	Not Null	Asc
	+				
Table	+OFS_UTILIZATION				
FK Column	FK_ASSIGN_VIN	Char	17	Not Null	
FK Column	FK_ASSIGN_DATE	Date	8	Not Null	
FK Column	FK_ASSIGN_AGENCY	Char	3	Not Null	
FK Column	FK_ASSIGN_ORG	Char	4	Not Null	
Column	FISCAL_YEAR	Char	4	Not Null	
Column	SEQUENCE_NUM	Smallint	3	Not Null	
Column	END_REPORT_DATE	Date	8	Not Null	
Column	END_REPORT_TIME	Timestamp	20	Not Null	
Column	BEG_METER_READING	Decimal	9,2	Not Null	
Column	END_METER_READING	Decimal	9,2	Not Null	
Column	RPT_VEHICLE_USAGE	Decimal	7,2	Not Null	
Column	RPT_COMMUTE_MILES	Decimal	6,2	Not Null	
Column	COMMUTING_PERCENT	Decimal	5,2	Not Null	
Column	USAGE_AGENCY	Char	3	Not Null	
Column	USAGE_ORGANIZATION	Char	4	Not Null	
Column	LAST_UPDATE_DATE	Date	8	Not Null	
Column	LAST_UPDATE_USER	Char	8	Not Null	
RI Constraint	OFSASGN6 OFS_ASSIGNMENT				
Index (U)	+I0000010 (Primary)				
Column	FK_ASSIGN_VIN	Char	17	Not Null	Asc
Column	FK_ASSIGN_DATE	Date	8	Not Null	Asc
Column	FK_ASSIGN_AGENCY	Char	3	Not Null	Asc
Column	FK_ASSIGN_ORG	Char	4	Not Null	Asc
Column	FISCAL_YEAR	Char	4	Not Null	Asc
Column	SEQUENCE_NUM	Smallint	3	Not Null	Asc
	+				
Table	+OFS_VEHICLE				
Column	VIN	Char	17	Not Null	
Column	TITLE_NUMBER	Char	8	Not Null	
Column	VEHICLE_YEAR	Char	4	Not Null	
Column	MAKE_DESC	Char	30	Not Null	
Column	MODEL_DESC	Char	30	Not Null	
Column	BODY_STYLE_DESC	Char	30	Not Null	
Column	VEHICLE_COLOR	Char	30	Not Null	
Column	VEH_CAT_CODE	Char	2	Not Null	
Column	SUB_CAT_CODE	Char	2	Not Null	
Column	PASSENGER_CAPACITY	Char	3	Not Null	
Column	METER_TYPE	Char	1	Not Null	
Column	GVWR	Integer	6	Not Null	
Column	ENGINE_SIZE	Char	15	Not Null	
Column	DRIVE_TYPE_DESC	Char	20	Not Null	
Column	LAST_METER_READING	Decimal	9,2	Not Null	

Column	CONTACT_CODE	Char	4	Not Null	
Column	WARRANTY_MILES	Integer	6	Not Null	
Column	WARRANTY_MONTHS	Smallint	3	Not Null	
Column	TIRE_SPECS	Char	20	Not Null	
Column	TRANSMISSION_TYPE	Char	1	Not Null	
Column	FUEL_CONFIG_DESC	Char	15	Not Null	
Column	ALT_FUEL_VHCLE_IND	Char	1	Not Null	
Column	DNR_CLASS_CODE	Char	2	Not Null	
Column	DNR_EXEMPT_IND	Char	1	Not Null	
Column	CAFE_RATING	Decimal	4,2	Not Null	
Column	AFV_CONVERSION_IND	Char	1	Not Null	
Column	AFV_DATE_CONVERTED	Date	8	Not Null	
Column	ORIG_RPLMNT_READNG	Decimal	9,2	Not Null	
Column	ODOMTR_RPLACE_DATE	Date	8	Not Null	
Column	LAST_RPLMNT_READNG	Decimal	9,2	Not Null	
Column	LAST_6_OF_VIN	Char	6	Not Null	
Column	PM1_METER_READING	Decimal	9,2	Not Null	
Column	PM2_METER_READING	Decimal	9,2	Not Null	
Column	PM3_METER_READING	Decimal	9,2	Not Null	
Column	PM4_METER_READING	Decimal	9,2	Not Null	
Column	PM1_DATE	Date	8	Not Null	
Column	PM_EMAIL_SENT_DATE	Date	8	Not Null	
Column	LAST_UPDATE_DATE	Date	8	Not Null	
Column	LAST_UPDATE_USER	Char	8	Not Null	
Index (U)	+I0000000 (Primary)				
Column	VIN	Char	17	Not Null	Asc
	+				
	+ +				
Table	+OFS_VEHICLE_MAKE				
Column	MAKE_DESC	Char	30	Not Null	
Column	LAST_UPDATE_DATE	Date	8	Not Null	
Column	LAST_UPDATE_USER	Char	8	Not Null	
Index (U)	+I0000001 (Primary)				
Column	MAKE_DESC	Char	30	Not Null	Asc
	+				
	+ +				
Table	+OFS_VEHICLE_MODEL				
Column	MODEL_DESC	Char	30	Not Null	
Column	LAST_UPDATE_DATE	Date	8	Not Null	
Column	LAST_UPDATE_USER	Char	8	Not Null	
FK Column	FK_VEH_MAKE_DESC	Char	30	Not Null	
RI Constraint	OFSVEHMK OFS_VEHICLE_MAKE				
Index (U)	+I0000002 (Primary)				
Column	FK_VEH_MAKE_DESC	Char	30	Not Null	Asc
Column	MODEL_DESC	Char	30	Not Null	Asc
	+				
	+ +				
Table	+OFS_VEHICLE_STATUS				
Column	STATUS_CODE	Char	2	Not Null	
Column	STATUS_SHORT_DESC	Char	20	Not Null	
Column	STATUS_LONG_DESC	Char	200	Not Null	
Column	LAST_UPDATE_DATE	Date	8	Not Null	
Column	LAST_UPDATE_USER	Char	8	Not Null	
Index (U)	+I0000065 (Primary)				
Column	STATUS_CODE	Char	2	Not Null	Asc
	+				
	+ +				
Table	+OFS_VMRS_ASSEMBLY				
FK Column	FK_VMRS_SYS_CODE	Char	3	Not Null	
Column	ASSEMBLY_CODE	Char	3	Not Null	
Column	ASSEMBLY_DESC	Char	90	Not Null	
Column	LAST_UPDATE_DATE	Date	8	Not Null	

Column	LAST_UPDATE_USER	Char	8	Not Null	
RI Constraint	OFSVMRSA OFS_VMRS_SYSTEM				
Index (U)	+I0000085 (Primary)				
Column	FK_VMRS_SYS_CODE	Char	3	Not Null	Asc
Column	ASSEMBLY_CODE	Char	3	Not Null	Asc
	+				
	+ +				
Table	+OFS_VMRS_COMPONENT				
FK Column	FK_VMRS_SYS_CODE	Char	3	Not Null	
FK Column	FK_VMRS_ASM_CODE	Char	3	Not Null	
Column	COMPONENT_CODE	Char	3	Not Null	
Column	COMPONENT_DESC	Char	90	Not Null	
Column	LAST_UPDATE_DATE	Date	8	Not Null	
Column	LAST_UPDATE_USER	Char	8	Not Null	
RI Constraint	OFSVMRSC OFS_VMRS_ASSEMBLY				
Index (U)	+I0000087 (Primary)				
Column	FK_VMRS_SYS_CODE	Char	3	Not Null	Asc
Column	FK_VMRS_ASM_CODE	Char	3	Not Null	Asc
Column	COMPONENT_CODE	Char	3	Not Null	Asc
	+				
	+ +				
Table	+OFS_VMRS_REASON				
Column	REASON_CODE	Char	2	Not Null	
Column	REASON_DESC	Char	50	Not Null	
Column	LAST_UPDATE_DATE	Date	8	Not Null	
Column	LAST_UPDATE_USER	Char	8	Not Null	
Index (U)	+I0000132 (Primary)				
Column	REASON_CODE	Char	2	Not Null	Asc
	+				
	+ +				
Table	+OFS_VMRS_SYSTEM				
Column	SYSTEM_CODE	Char	3	Not Null	
Column	SYSTEM_DESC	Char	70	Not Null	
Column	LAST_UPDATE_DATE	Date	8	Not Null	
Column	LAST_UPDATE_USER	Char	8	Not Null	
Index (U)	+I0000081 (Primary)				
Column	SYSTEM_CODE	Char	3	Not Null	Asc
	+				
	+ +				
Table	+OFS_VMRS_WORK				
Column	WORK_CODE	Char	2	Not Null	
Column	WORK_SHORT_DESC	Char	25	Not Null	
Column	WORK_LONG_DESC	Char	240	Not Null	
Column	LAST_UPDATE_DATE	Date	8	Not Null	
Column	LAST_UPDATE_USER	Char	8	Not Null	
Index (U)	+I0000080 (Primary)				
Column	WORK_CODE	Char	2	Not Null	Asc
	+				
	+ +				